

September 2018

Fire - Performance Measure Data *					
Response District	Total Calls in District	Greater than 20 min. Response Time	Calls Handled by other agency	Longest Response Time	Overall Station Benchmark %
New Church	6	0	0	0:16:14	100.0%
Greenbackville	1	0	0	0:12:20	100.0%
Chincoteague	3	0	0	0:09:06	100.0%
Atlantic	10	1	0	0:24:08	90.0%
Saxis	1	0	0	0:07:25	100.0%
Bloxom	5	0	0	0:14:31	100.0%
Parksley	11	0	0	0:14:49	100.0%
Tasley	10	0	0	0:13:10	100.0%
Onancock	13	0	1	0:15:17	100.0%
Melfa	11	0	4	0:16:05	100.0%
Wachapreague	2	0	0	0:09:43	100.0%
Painter	8	0	0	0:17:21	100.0%
Tangier	0	0	0	0	#DIV/0!
System Totals	81	1	5	0:24:08	98.8%

EMS - Performance Measure Data						
Response District	Total Calls in District	Greater than 20 min. Response Time	Longest Response Time	Calls Handled by other agency	Station Benchmark Compliance %	Overall Station Reliability %
Greenbackville	15	3	0:21:52	12	80.0%	20.0%
Chincoteague	81	1	0:33:33	7	98.8%	91.4%
Saxis	2	0	0:12:15	1	100.0%	50.0%
Bloxom	61	0	0:19:31	4	100.0%	93.4%
Parksley	69	0	0:14:38	1	100.0%	98.6%
Onancock	81	1	0:26:03	4	98.8%	95.1%
Melfa	39	0	0:17:55	6	100.0%	84.6%
Wachapreague (Painter)	34	2	0:25:01	2	94.1%	94.1%
Oak Hall	92	2	0:21:57	6	97.8%	93.5%
Tangier	13	1	0:40:29	0	92.3%	100.0%
Community (Exmore)	5	0	0:09:57	1	100.0%	80.0%
System Totals	492	10	0:40:29	44	98.0%	91.1%

	Station Giving Aid															
	Greenbackville	Chincoteague	Saxis	Bloxom	Parksley	Onancock	Melfa	Wachapreague/Painter	Oak Hall	Community (Exmore)	Northampton	Wallops	NORS	2nd Call	3rd Call	
Greenbackville		2							10					11	1	
Chincoteague				3					4					1	5	1
Saxis									1					1		
Bloxom					4									2	2	
Parksley				1										1		
Onancock				1			3							3	1	
Melfa						4		2						5	1	
Wachapreague (Painter)							1			1				1	1	
Oak Hall	1	2		3										2	4	
Community (Exmore)									1					1		
Northampton Co.																
Wallops																
Totals	1	4	0	8	4	4	4	3	15	1	0	0	28	15	1	

Hospital Destination by Unit	Station Receiving Aid		
	Riverside - Shore Memorial	PRMC	Other
Greenbackville	1	2	
Chincoteague	20	36	
Saxis		1	
Bloxom	31	2	
Parksley	48	1	
Onancock	50		
Melfa	30		
Wachapreague (Painter)	33		1
Oak Hall	50	23	
Wallops			
Totals	263	65	1

Benchmark = The Accomack County Board of Supervisors established a 20 minute standard for emergency response.

NORS = No Response by station or the call was handled by another station or agency.

2nd Call = 2nd ambulance call received while first ambulance was on another call.

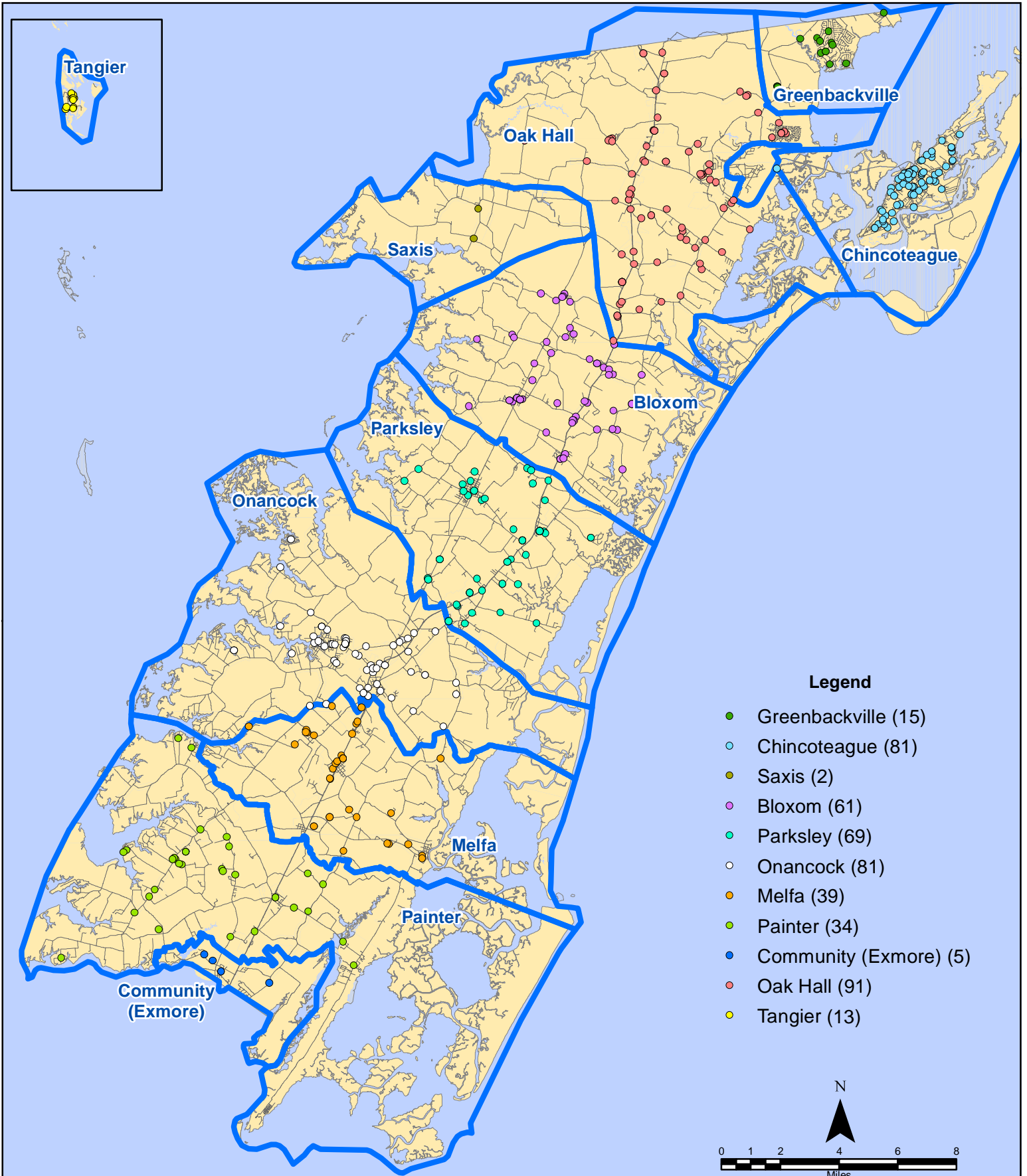
3rd Call = 3rd ambulance call received while first & second ambulances were on other calls.

* This data excludes F1 Med (Medical Assist) calls in the Fire Data.

This information was prepared using data supplied by the Eastern Shore of Virginia 911 Center. This information is original incident data only and may not be representative of all units and/or stations who responded to an incident.

Station Receiving Aid

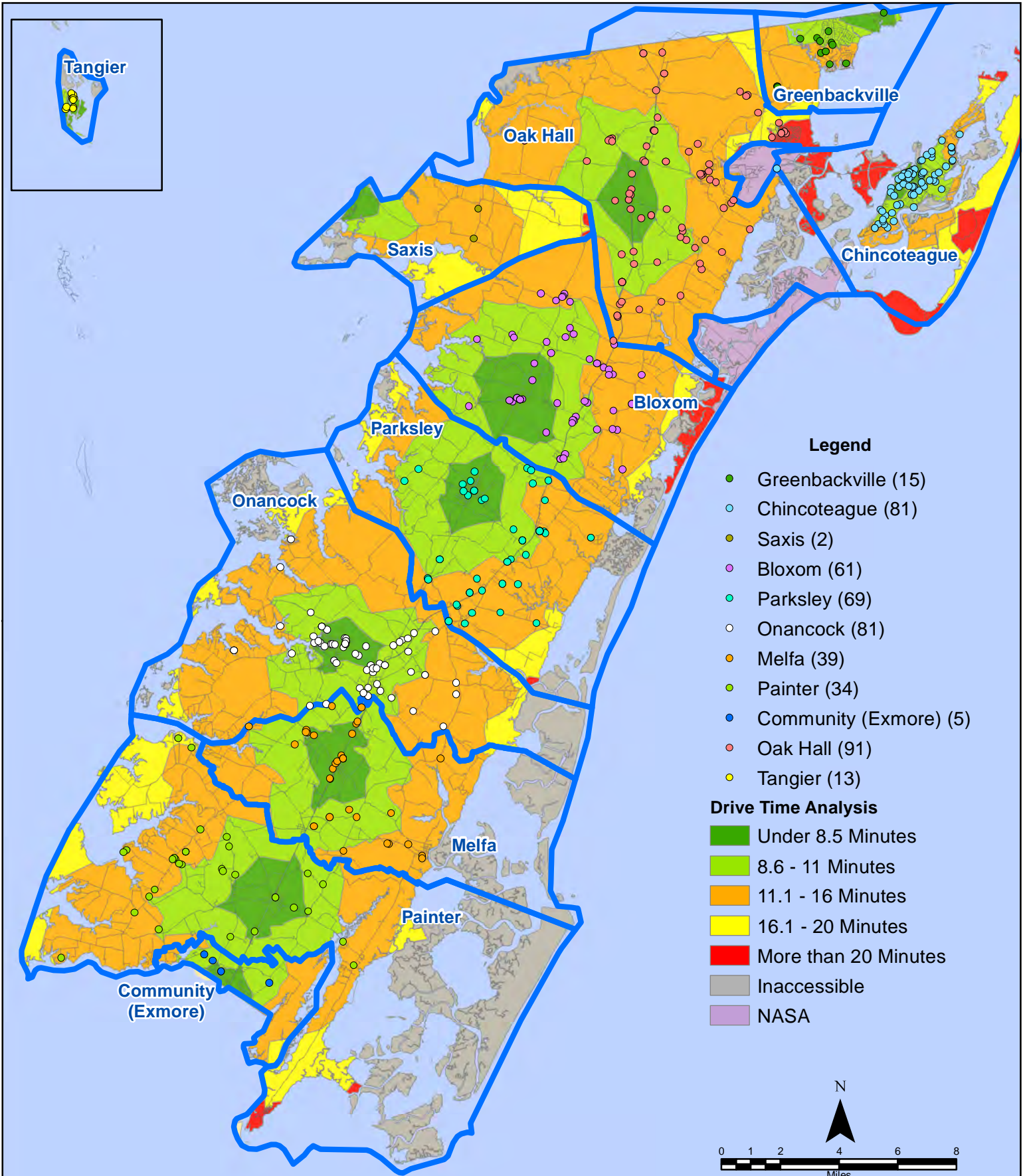
September 2018 EMS Calls By District



All points are plotted using X and Y coordinates provided by the ESVA 911 Center.
Points may be plotted over one another when they are in close proximity.

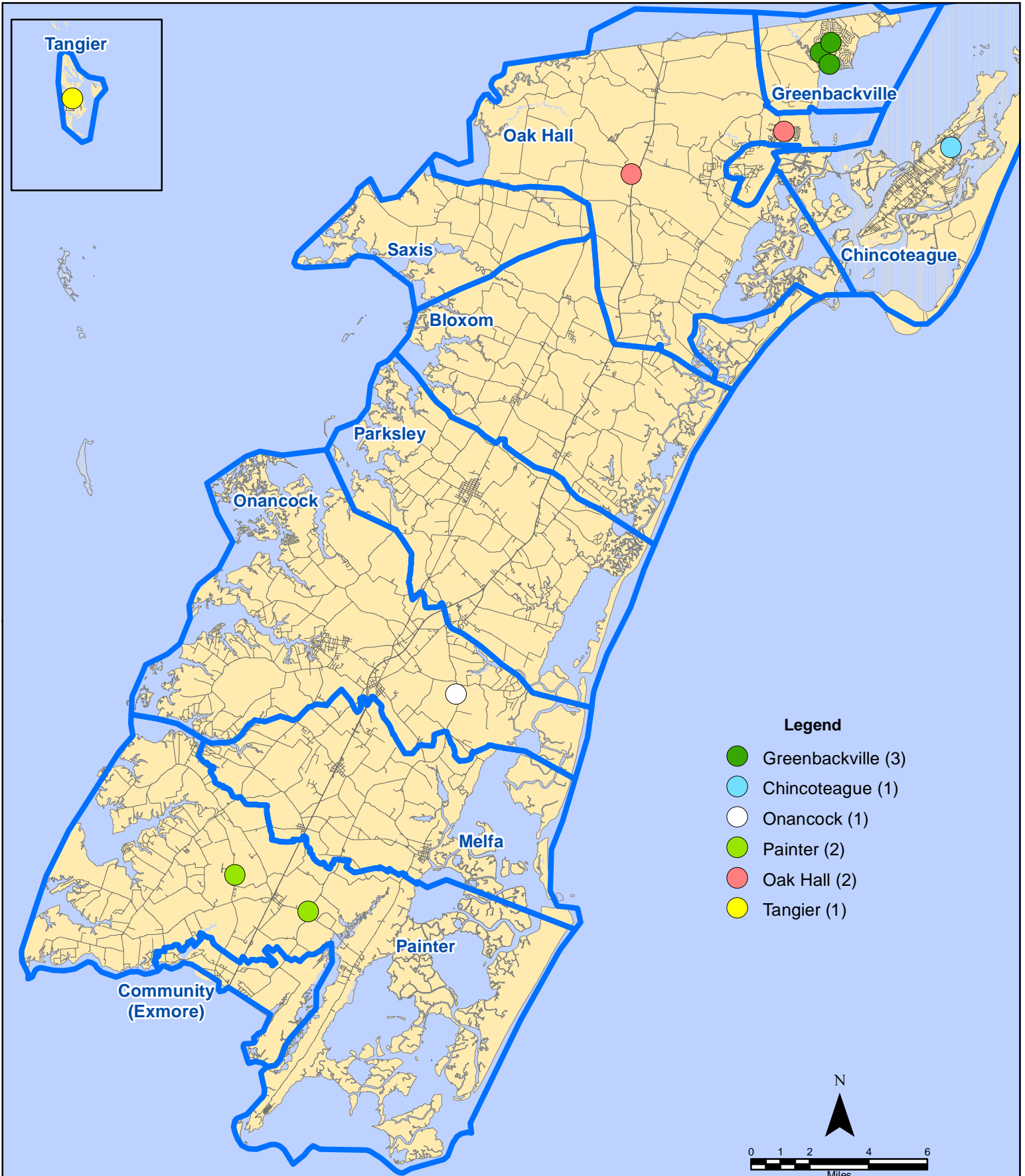
Map Prepared by the Accomack County Department of Building, Planning & Economic Development using data from the ESVA 911 Center.- October 10, 2018

September 2018 EMS Calls By District



All points are plotted using X and Y coordinates provided by the ESVA 911 Center. Points may be plotted over one another when they are in close proximity.

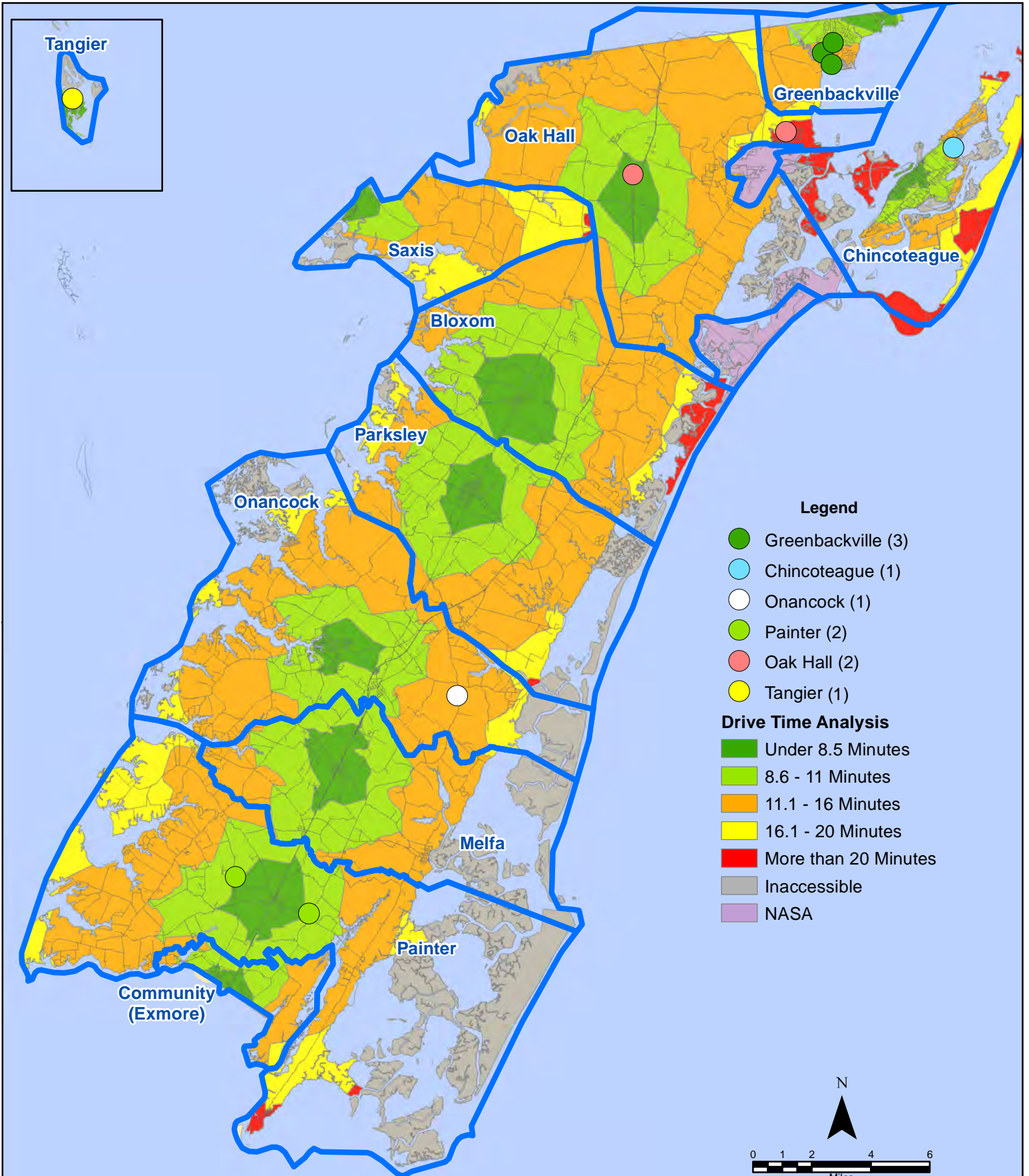
September 2018 EMS Calls With Response Time Greater Than 20 Mins.



All points are plotted using X and Y coordinates provided by the ESVA 911 Center. Points may be plotted over one another when they are in close proximity.

Map Prepared by the Accomack County Department of Building, Planning & Economic Development using data from the ESVA 911 Center.- October 10, 2018

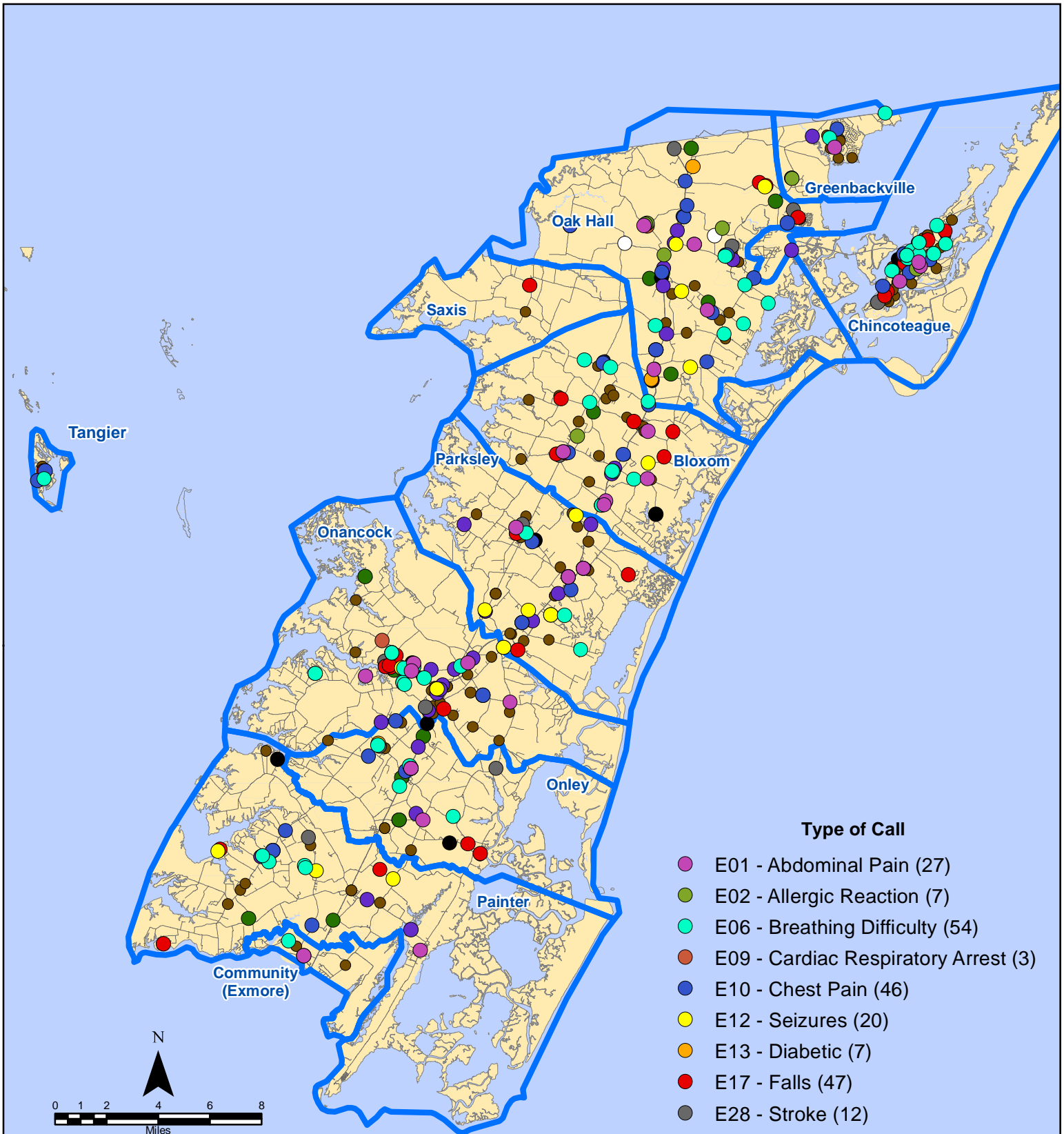
September 2018 EMS Calls With Response Time Greater Than 20 Mins.



All points are plotted using X and Y coordinates provided by the ESVA 911 Center. Points may be plotted over one another when they are in close proximity.

Map Prepared by the Accomack County Department of Building, Planning & Economic Development using data from the ESVA 911 Center.- October 10, 2018

September 2018 EMS Calls By Type



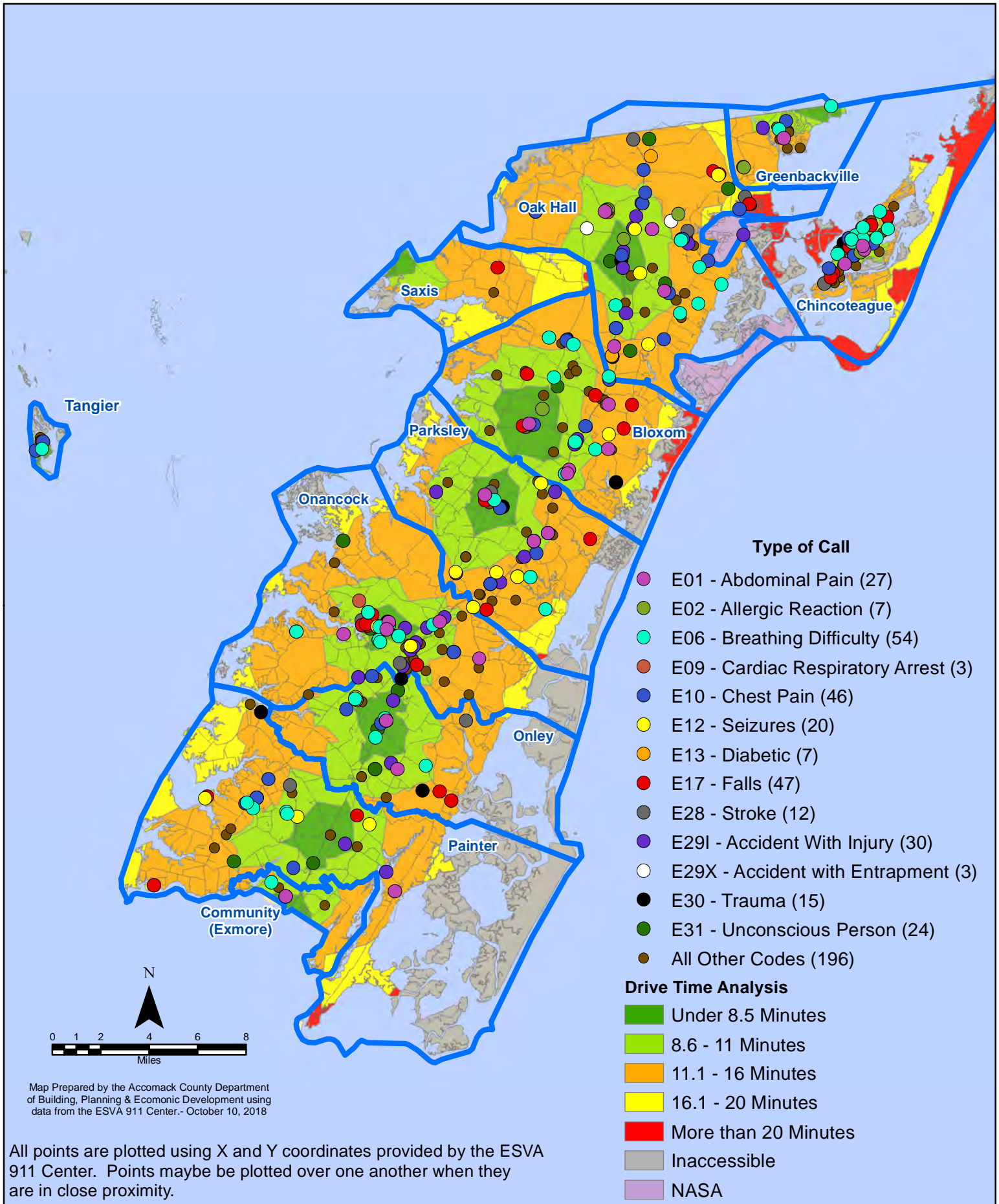
Type of Call

- E01 - Abdominal Pain (27)
- E02 - Allergic Reaction (7)
- E06 - Breathing Difficulty (54)
- E09 - Cardiac Respiratory Arrest (3)
- E10 - Chest Pain (46)
- E12 - Seizures (20)
- E13 - Diabetic (7)
- E17 - Falls (47)
- E28 - Stroke (12)
- E29I - Accident With Injury (30)
- E29X - Accident with Entrapment (3)
- E30 - Trauma (15)
- E31 - Unconscious Person (24)
- All Other Codes (196)

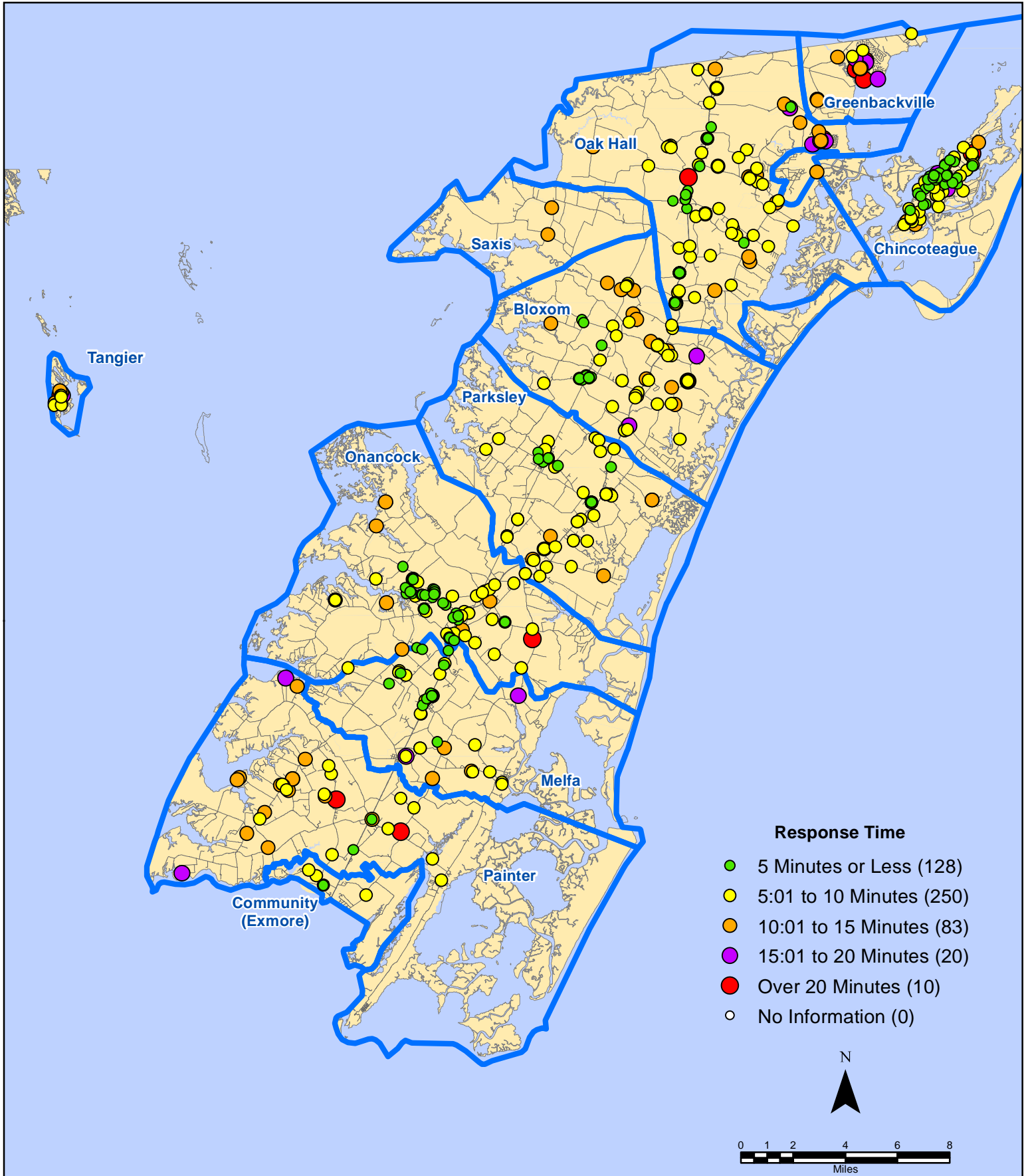
Map Prepared by the Accomack County Department of Building, Planning & Economic Development using data from the ESVA 911 Center. - October 10, 2018

All points are plotted using X and Y coordinates provided by the ESVA 911 Center. Points may be plotted over one another when they are in close proximity.

September 2018 EMS Calls By Type



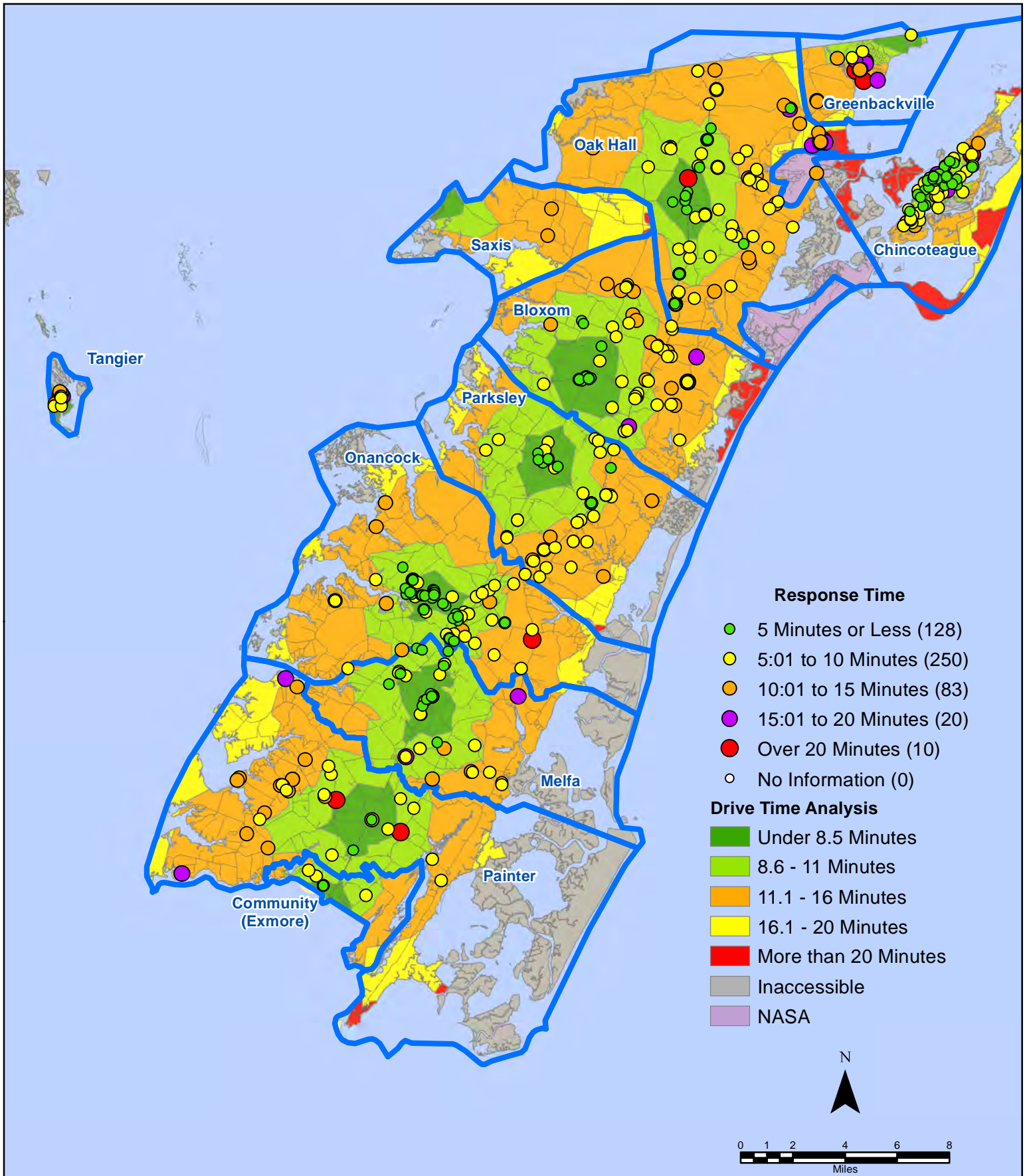
September 2018 EMS Calls By Response Time



All points are plotted using X and Y coordinates provided by the ESVA 911 Center.
Points may be plotted over one another when they are in close proximity.

Map Prepared by the Accomack County Department of Building, Planning & Economic Development using data from the ESVA 911 Center.- October 10, 2018

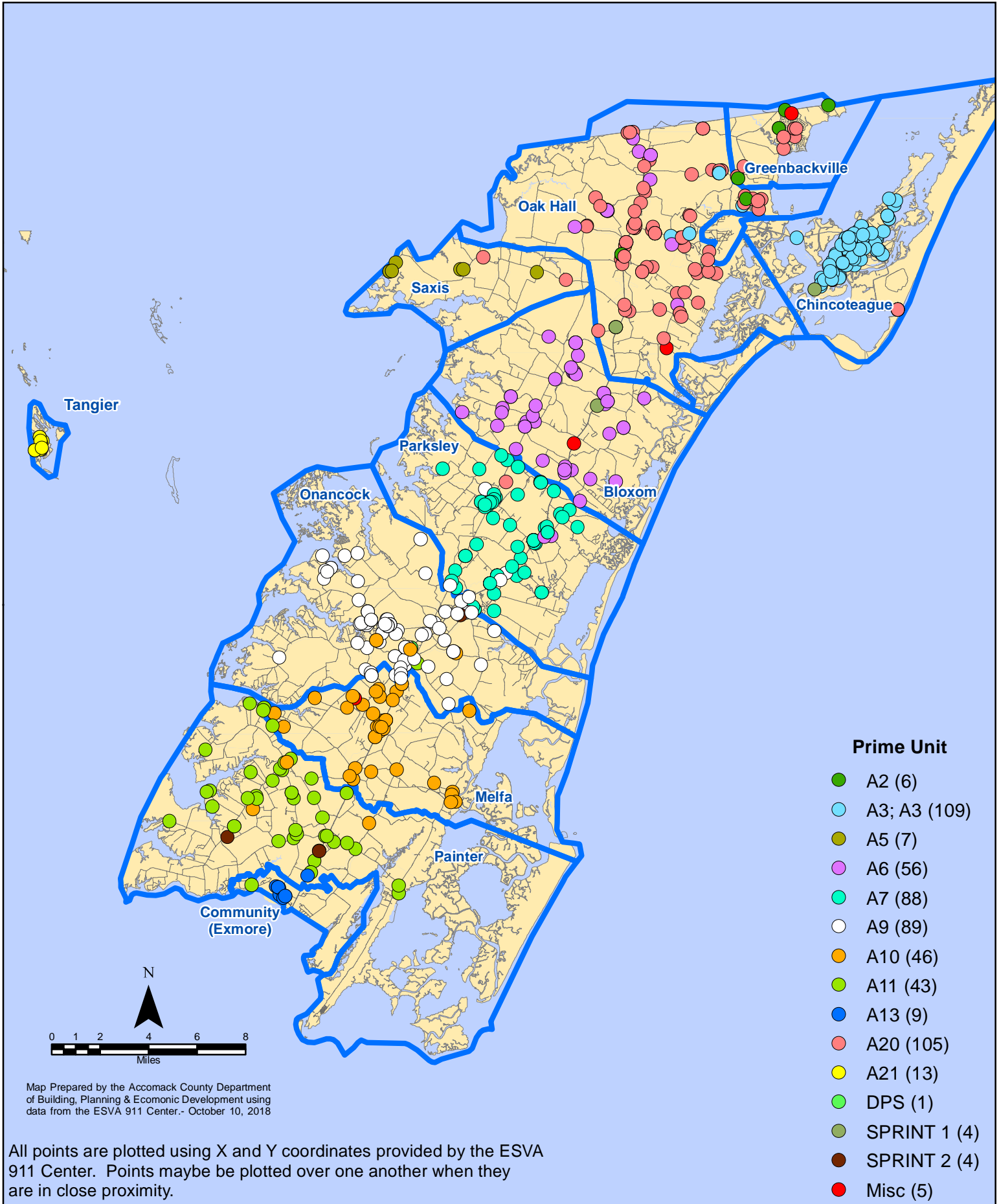
September 2018 EMS Calls By Response Time



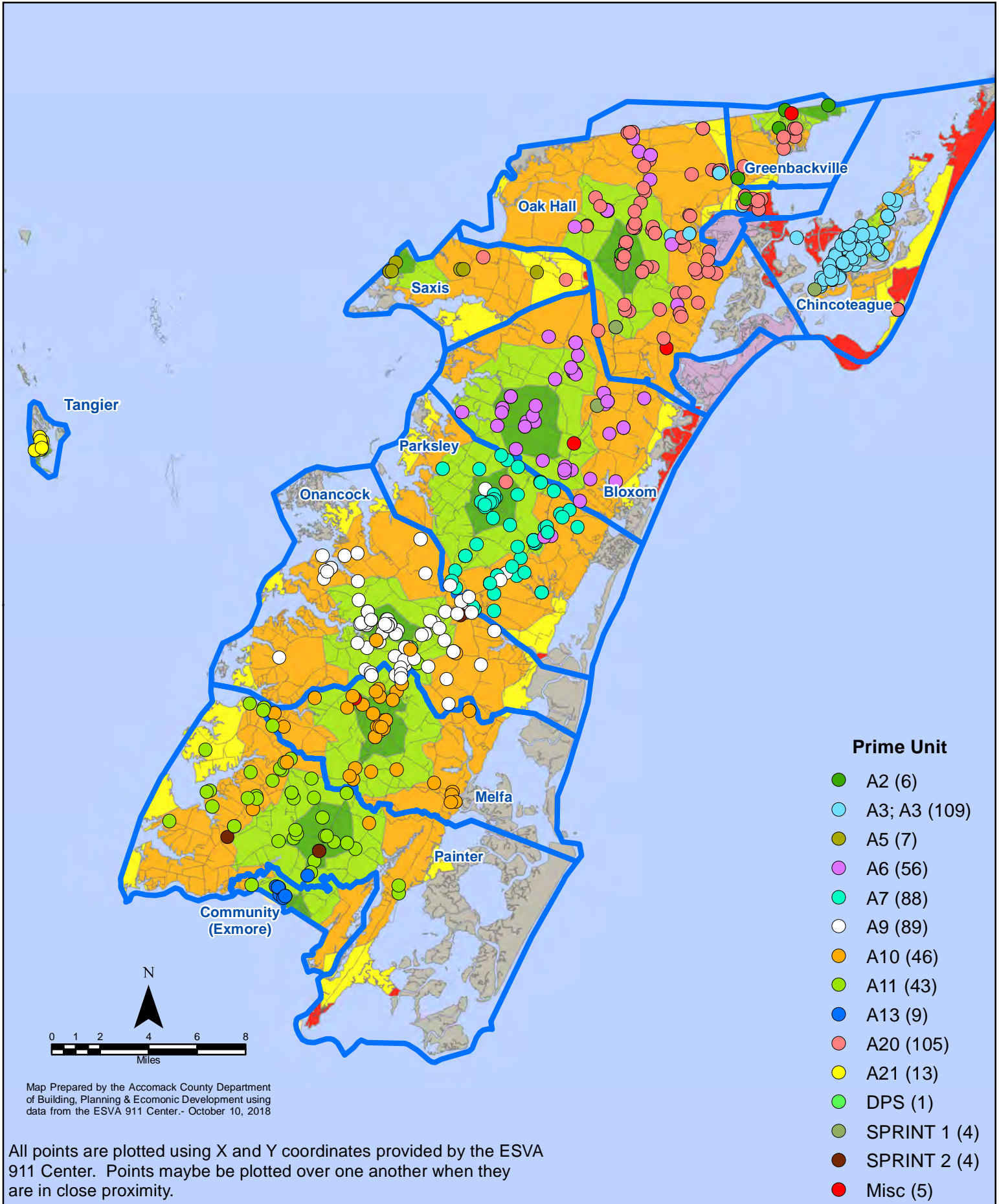
All points are plotted using X and Y coordinates provided by the ESVA 911 Center. Points may be plotted over one another when they are in close proximity.

Map Prepared by the Accomack County Department of Building, Planning & Economic Development using data from the ESVA 911 Center.- October 10, 2018

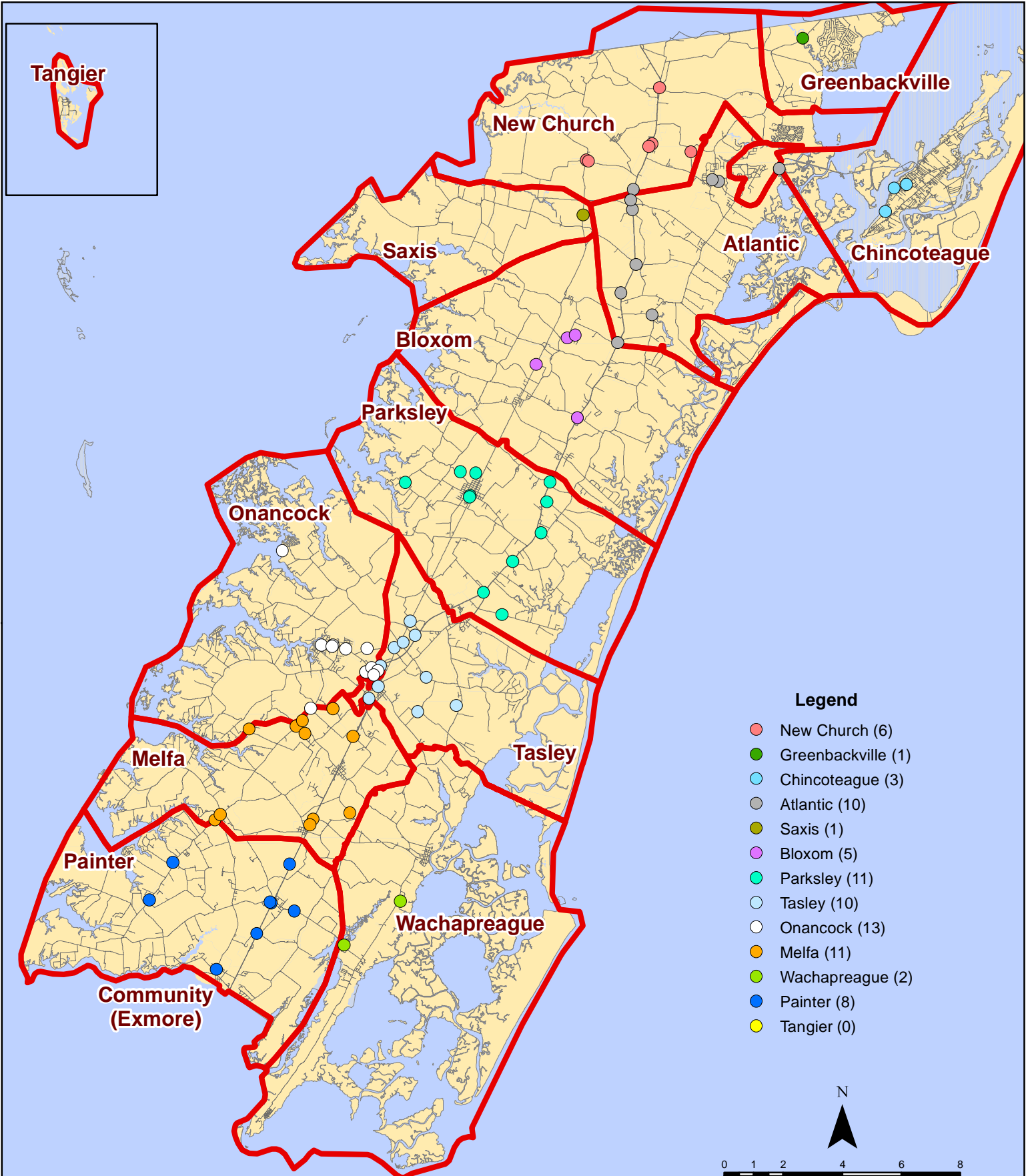
September 2018 EMS Calls By Prime Unit



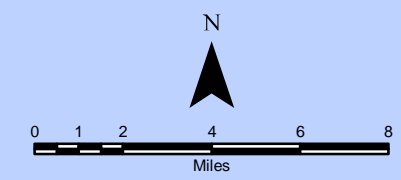
September 2018 EMS Calls By Prime Unit



September 2018 Fire Calls By District

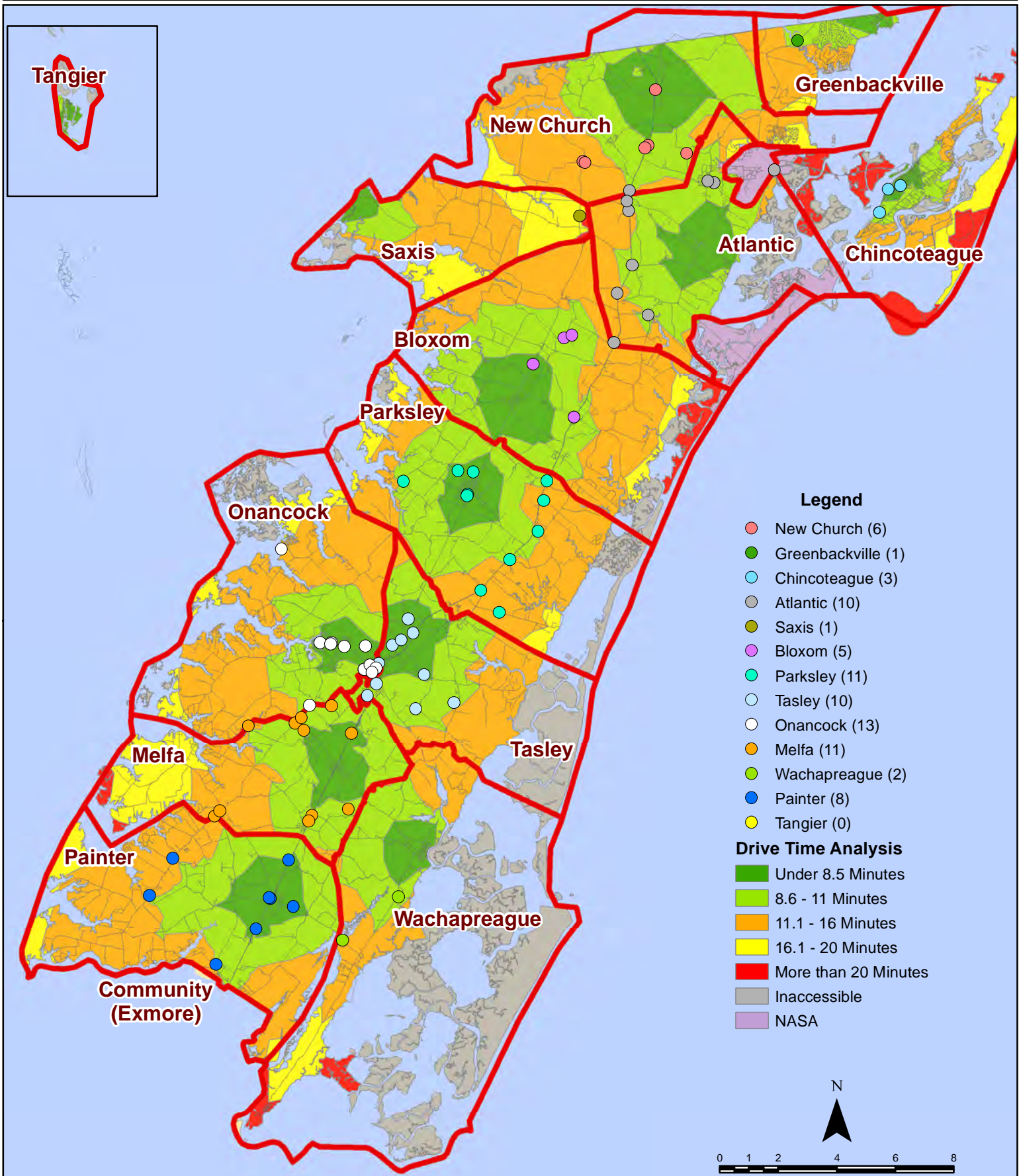


All points are plotted using X and Y coordinates provided by the ESVA 911 Center. Points may be plotted over one another when they are in close proximity.



Map Prepared by the Accomack County Department of Building, Planning & Economic Development using data from the ESVA 911 Center. - October 10, 2018

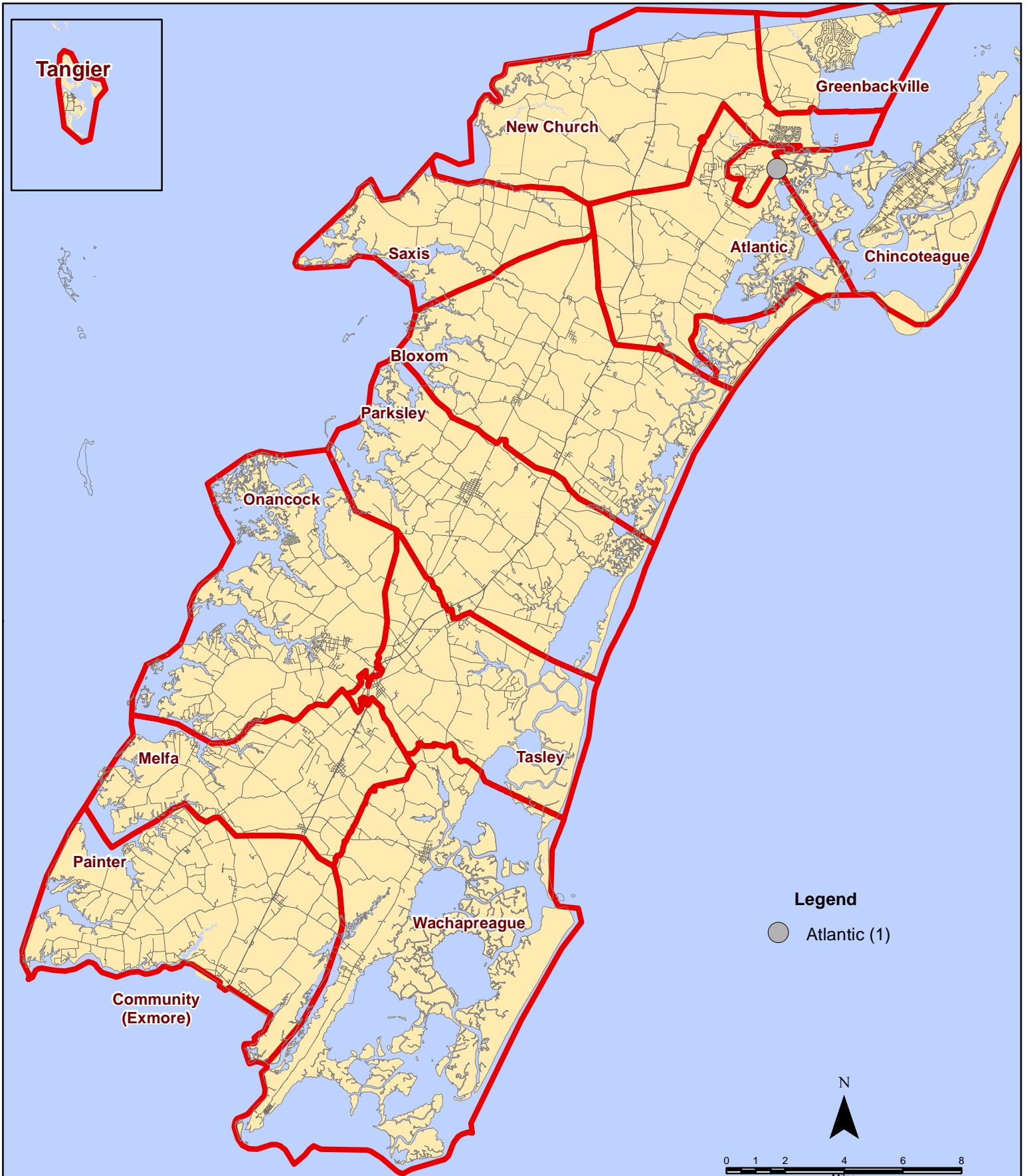
September 2018 Fire Calls By District



All points are plotted using X and Y coordinates provided by the ESVA 911 Center. Points may be plotted over one another when they are in close proximity.

Map Prepared by the Accomack County Department of Building, Planning & Economic Development using data from the ESVA 911 Center. - October 10, 2018

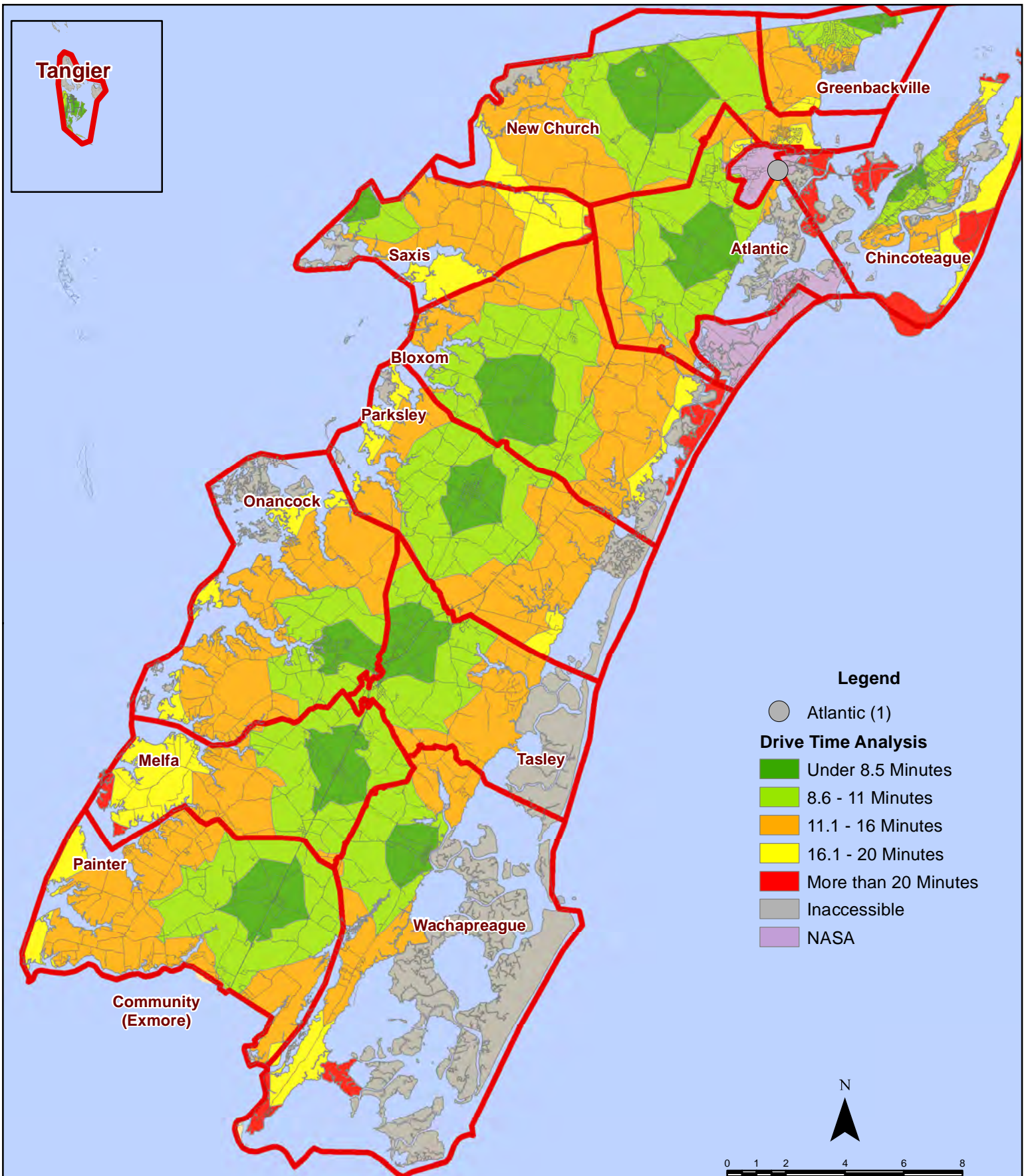
September 2018 Fire Calls With Response Time Greater Than 20 Mins.



All points are plotted using X and Y coordinates provided by the ESVA 911 Center. Points may be plotted over one another when they are in close proximity.

Map Prepared by the Accomack County Department of Building, Planning & Economic Development using data from the ESVA 911 Center. - October 10, 2018

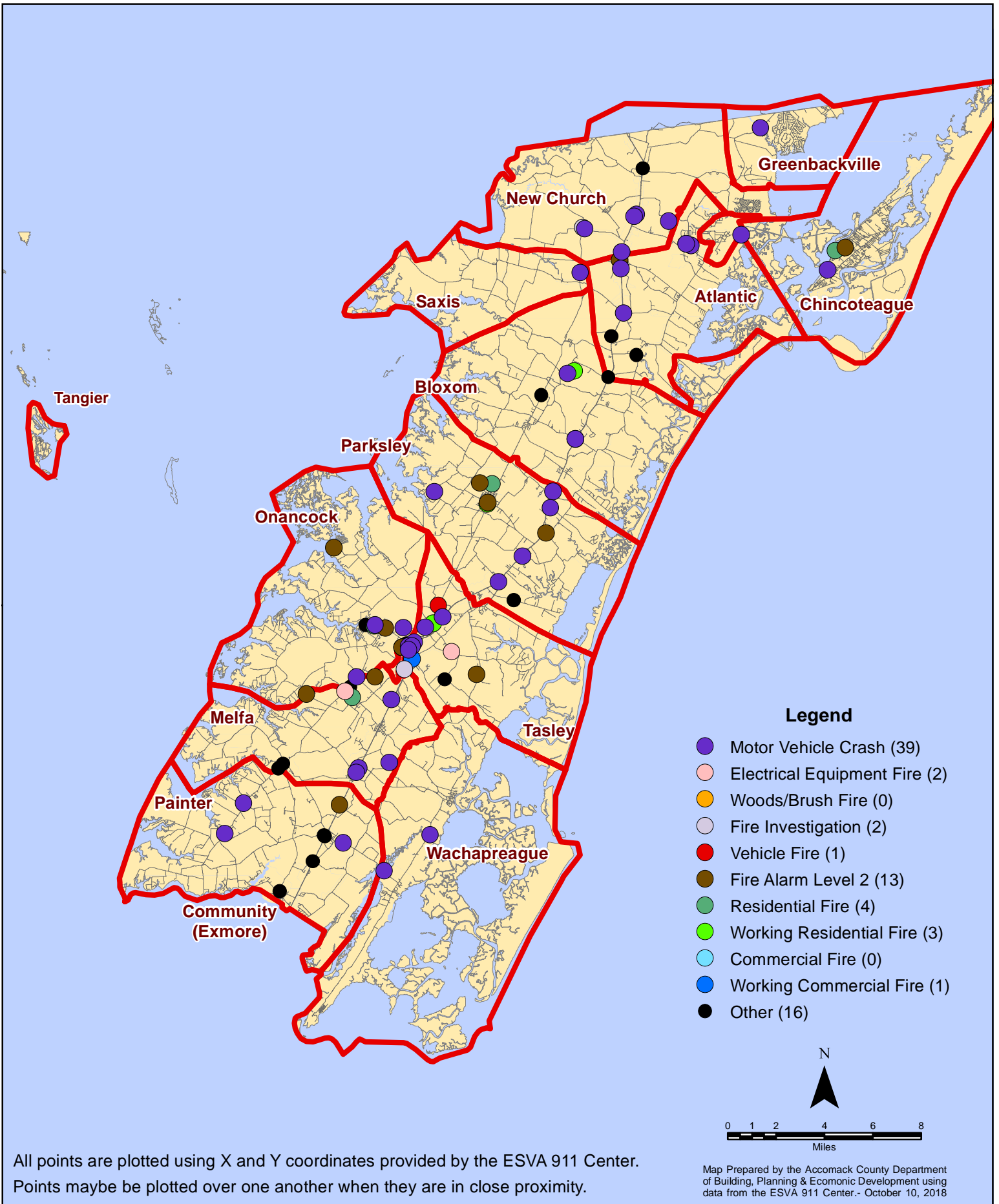
September 2018 Fire Calls With Response Time Greater Than 20 Mins.



All points are plotted using X and Y coordinates provided by the ESVA 911 Center. Points may be plotted over one another when they are in close proximity.

Map Prepared by the Accomack County Department of Building, Planning & Economic Development using data from the ESVA 911 Center.- October 10, 2018

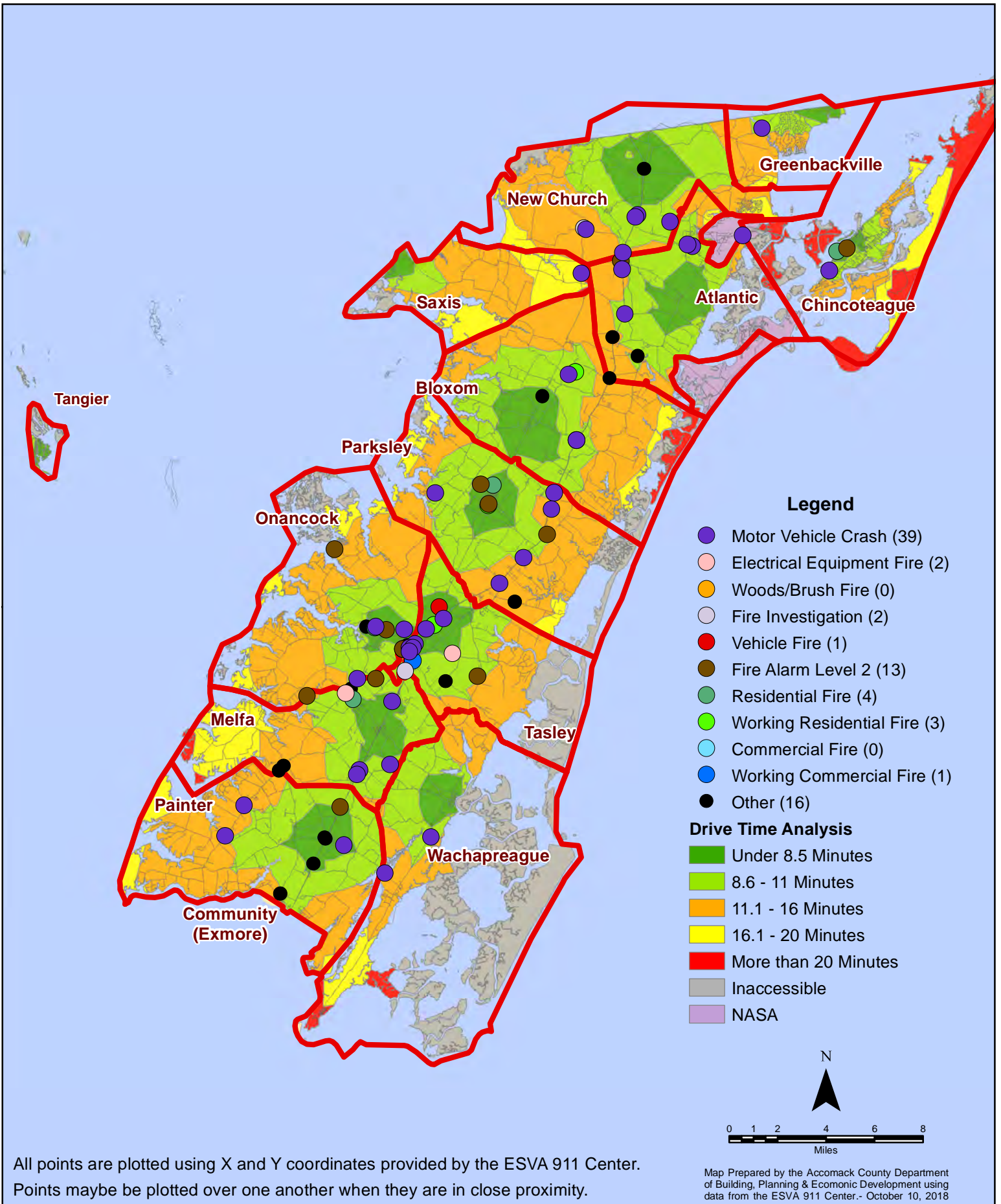
September 2018 Fire Calls By Type



All points are plotted using X and Y coordinates provided by the ESVA 911 Center. Points may be plotted over one another when they are in close proximity.

Map Prepared by the Accomack County Department of Building, Planning & Economic Development using data from the ESVA 911 Center. - October 10, 2018

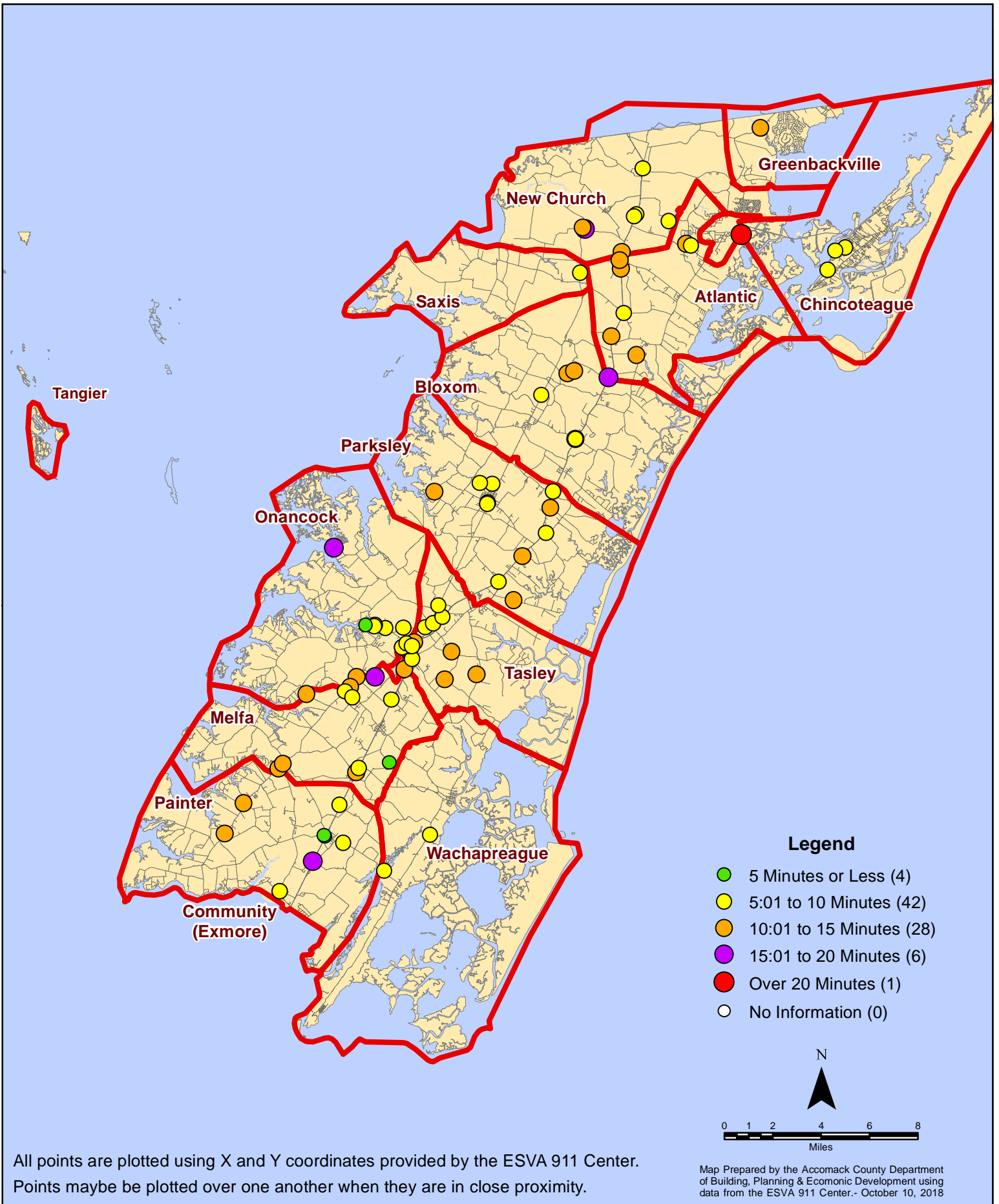
September 2018 Fire Calls By Type



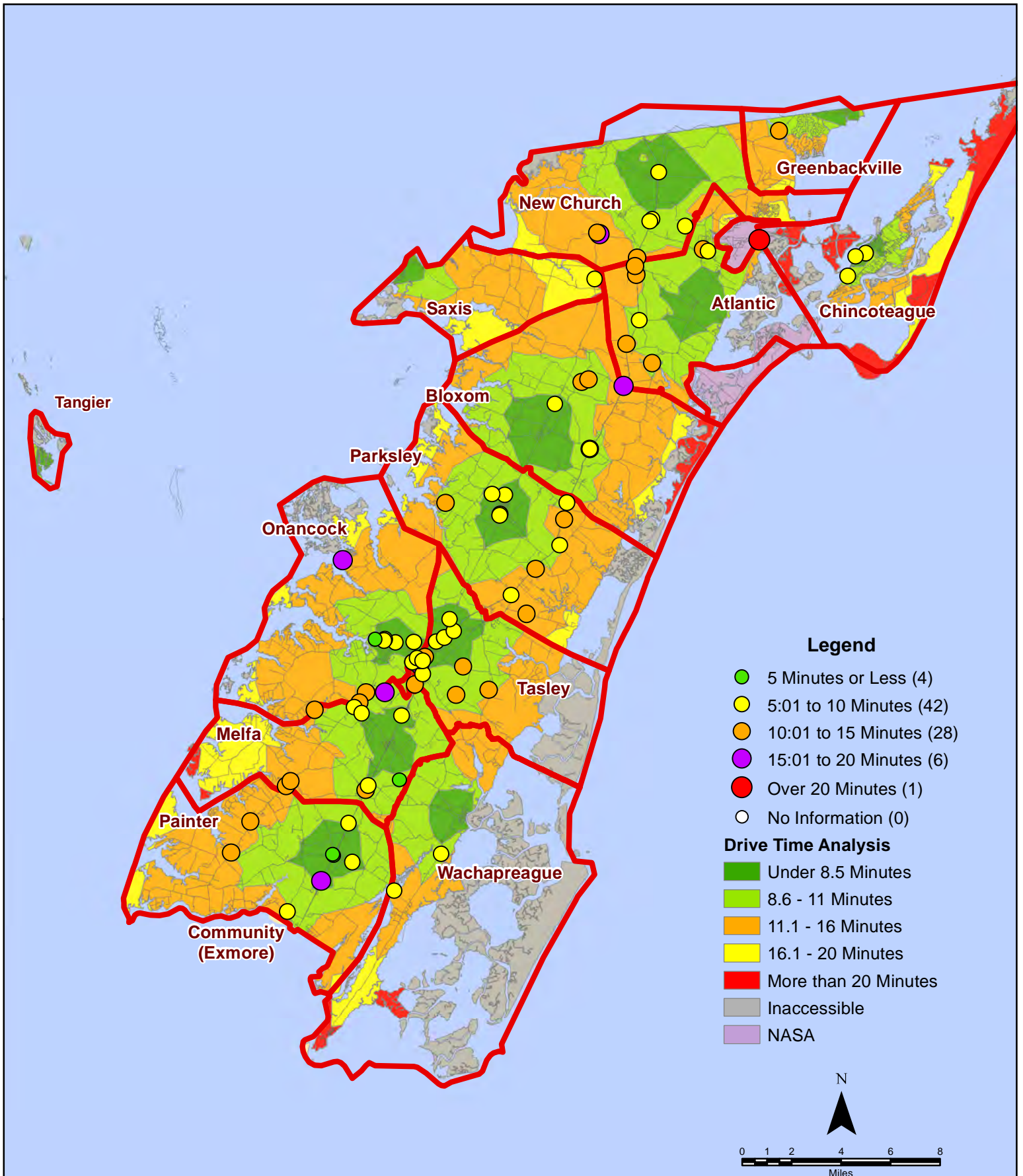
All points are plotted using X and Y coordinates provided by the ESVA 911 Center. Points may be plotted over one another when they are in close proximity.

Map Prepared by the Accomack County Department of Building, Planning & Economic Development using data from the ESVA 911 Center. - October 10, 2018

September 2018 Fire Calls By Response Time



September 2018 Fire Calls By Response Time



All points are plotted using X and Y coordinates provided by the ESVA 911 Center. Points may be plotted over one another when they are in close proximity.

Map Prepared by the Accomack County Department of Building, Planning & Economic Development using data from the ESVA 911 Center. - October 10, 2018