

January 2019

Fire - Performance Measure Data *					
Response District	Total Calls in District	Greater than 20 min. Response Time	Calls Handled by other agency	Longest Response Time	Overall Station Benchmark %
New Church	6	0	0	0:11:37	100.0%
Greenbackville	0	0	0	0	#DIV/0!
Chincoteague	3	0	1	0:12:20	100.0%
Atlantic	10	1	1	0:23:20	90.0%
Saxis	1	0	1	0:12:41	100.0%
Bloxom	7	0	0	0:17:54	100.0%
Parksley	14	0	0	0:15:59	100.0%
Tasley	9	0	1	0:14:15	100.0%
Onancock	5	0	0	0:14:14	100.0%
Melfa	8	0	2	0:18:52	100.0%
Wachapreague	2	0	0	0:07:28	100.0%
Painter	11	0	0	0:12:27	100.0%
Tangier	0	0	0	0	#DIV/0!
System Totals	76	1	6	0:23:20	98.7%

EMS - Performance Measure Data						
Response District	Total Calls in District	Greater than 20 min. Response Time	Longest Response Time	Calls Handled by other agency	Station Benchmark Compliance %	Overall Station Reliability %
Greenbackville	22	3	0:26:21	15	86.4%	31.8%
Chincoteague	44	0	0:13:34	0	100.0%	100.0%
Saxis	9	0	0:10:38	2	100.0%	77.8%
Bloxom	38	1	0:26:34	4	97.4%	89.5%
Parksley	89	1	0:20:05	17	98.9%	80.9%
Onancock	88	0	0:19:00	7	100.0%	92.0%
Melfa	45	0	0:12:58	1	100.0%	97.8%
Wachapreague (Painter)	44	0	0:17:45	2	100.0%	95.5%
Oak Hall	67	0	0:17:34	3	100.0%	95.5%
Tangier	20	0	0:14:32	0	100.0%	100.0%
Community (Exmore)	12	0	0:15:15	5	100.0%	58.3%
System Totals	478	5	0:26:34	56	99.0%	88.3%

EMS Mutual Aid Data		Station Giving Aid														
Station Receiving Aid		Greenbackville	Chincoteague	Saxis	Bloxom	Parksley	Onancock	Melfa	Wachapreague/Painter	Oak Hall	Community (Exmore)	Northampton	Wallops	NORS	2nd Call	3rd Call
		Greenbackville										15				14
Chincoteague																
Saxis				1						1				2		
Bloxom					2					2				1	3	
Parksley			1	10		5		1						6	7	4
Onancock					3		4							5	2	
Melfa								1			7			1		
Wachapreague (Painter)							1			1				1	1	
Oak Hall	1			2										1	2	
Community (Exmore)									5					5		
Northampton Co.																
Wallops																
Totals	1	0	1	13	5	5	5	7	18	1	7	0	36	16	4	

Transport Destination			
Hospital Destination by Unit	Riverside - Shore Memorial	PRMC	Other
Chincoteague	9	13	1
Saxis	5	3	
Bloxom	31		
Parksley	49	1	
Onancock	55		
Melfa	36		
Wachapreague (Painter)	33		
Oak Hall	42	16	
Wallops			
Totals	263	40	1

Benchmark = The Accomack County Board of Supervisors established a 20 minute standard for emergency response.

NORS = No Response by station or the call was handled by another station or agency.

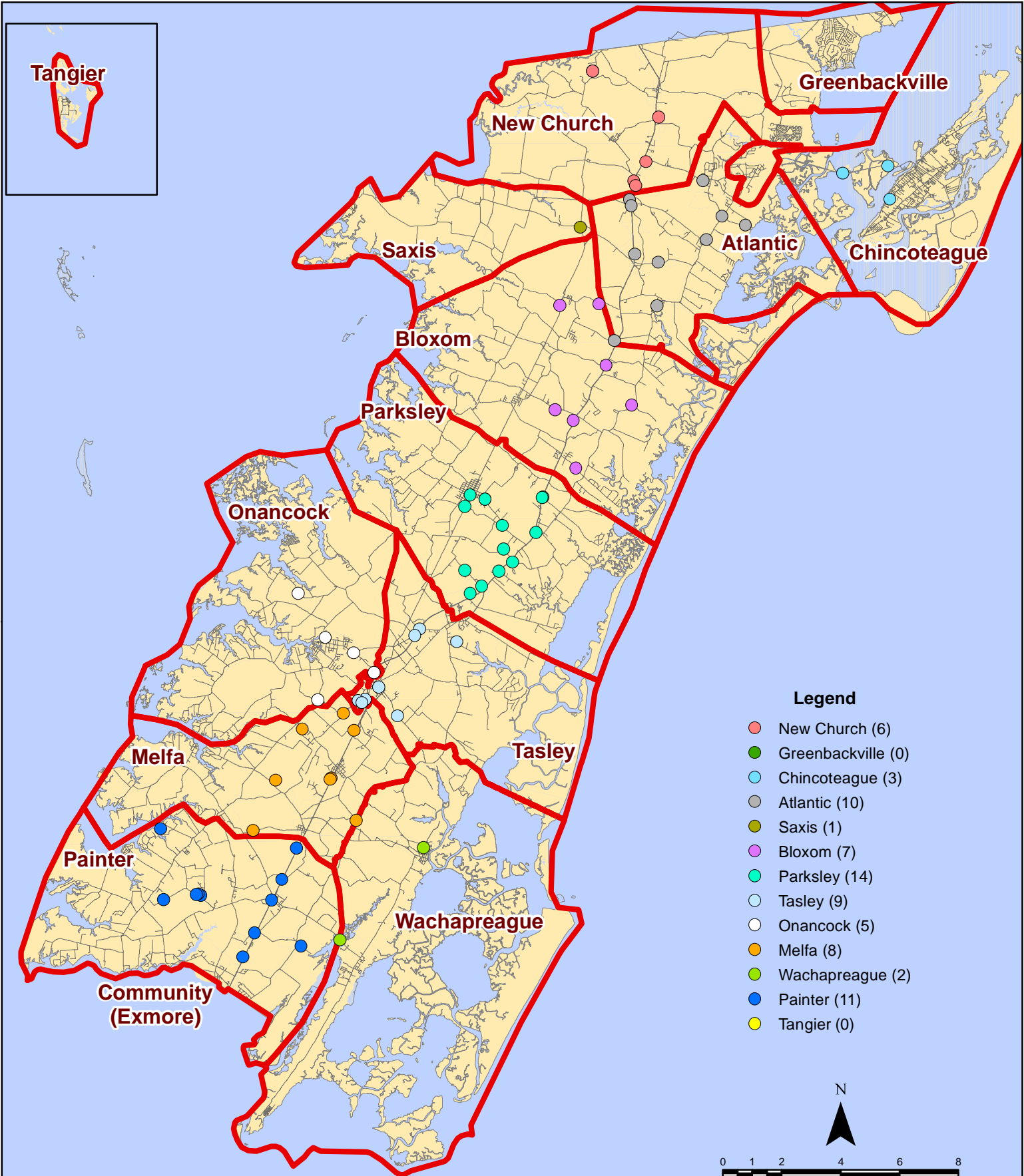
2nd Call = 2nd ambulance call received while first ambulance was on another call.

3rd Call = 3rd ambulance call received while first & second ambulances were on other calls.

* This data excludes F1 Med (Medical Assist) calls in the Fire Data.

This information was prepared using data supplied by the Eastern Shore of Virginia 911 Center. This information is original incident data only and may not be representative of all units and/or stations who responded to an incident.

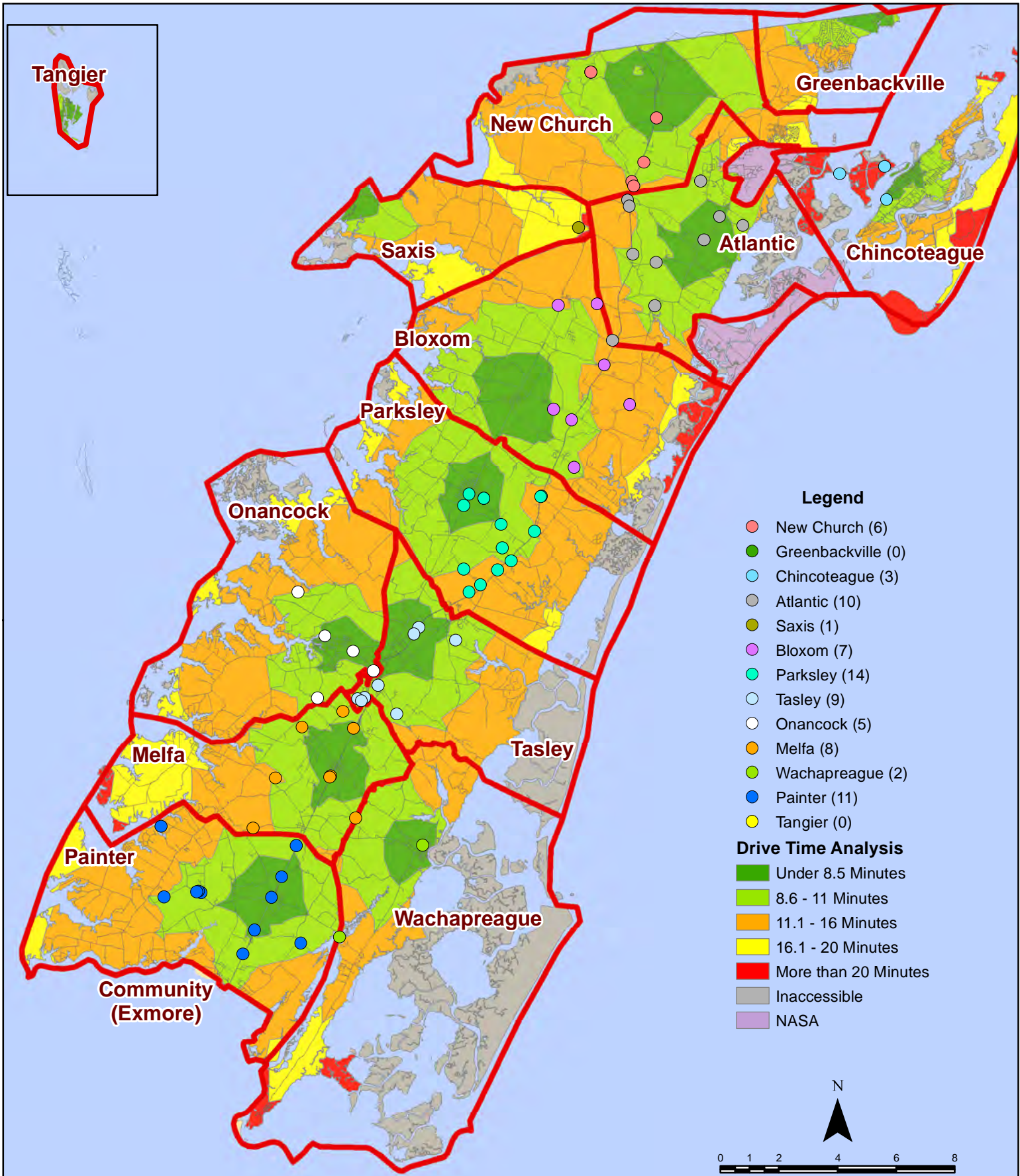
January 2019 Fire Calls By District



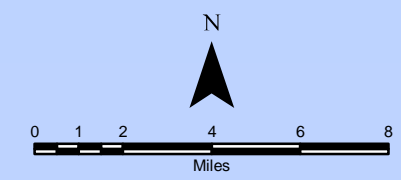
All points are plotted using X and Y coordinates provided by the ESVA 911 Center. Points may be plotted over one another when they are in close proximity.

Map Prepared by the Accomack County Department of Building, Planning & Economic Development using data from the ESVA 911 Center - February 8, 2019

January 2019 Fire Calls By District

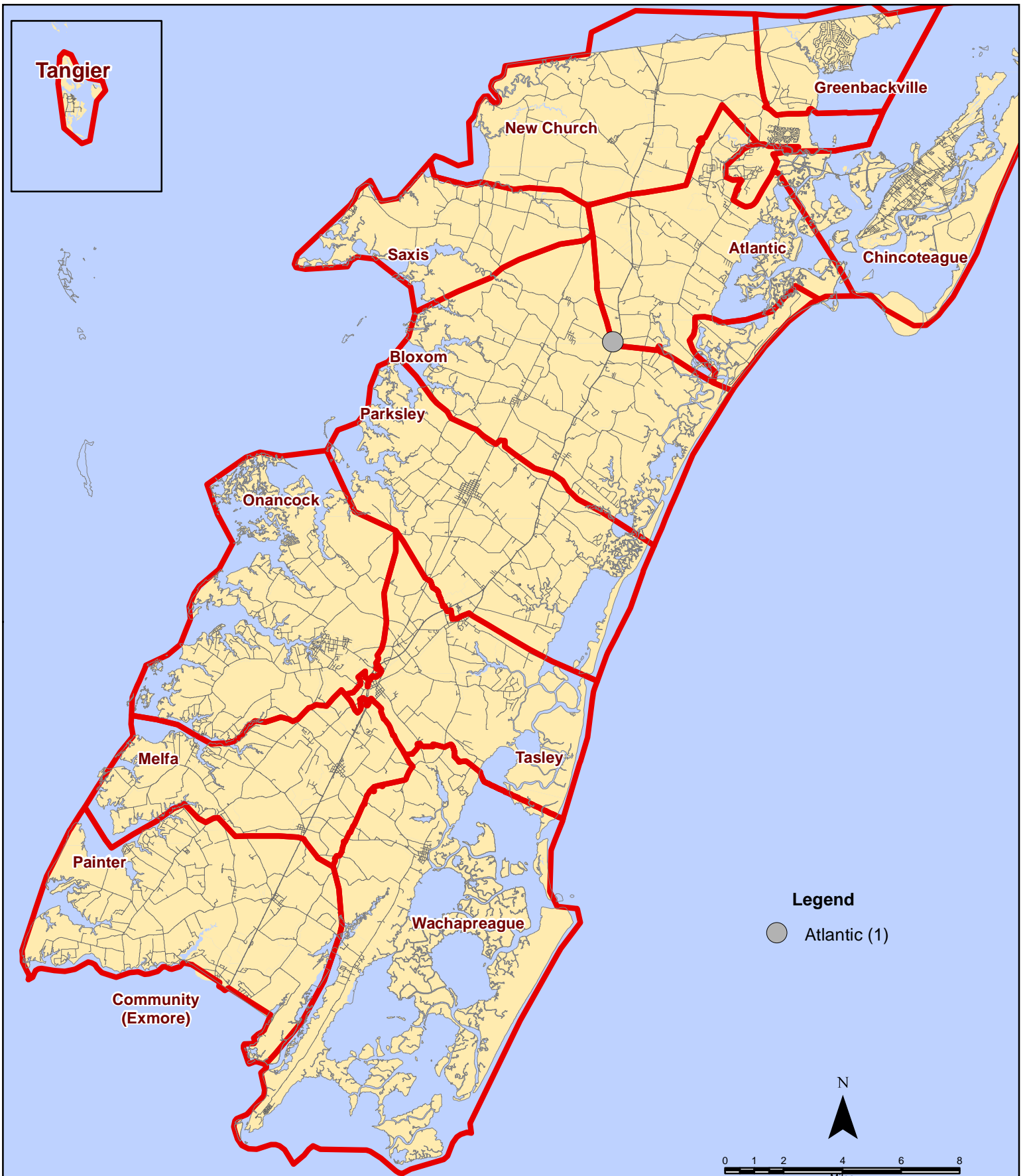


All points are plotted using X and Y coordinates provided by the ESVA 911 Center. Points may be plotted over one another when they are in close proximity.



Map Prepared by the Accomack County Department of Building, Planning & Economic Development using data from the ESVA 911 Center - February 8, 2019

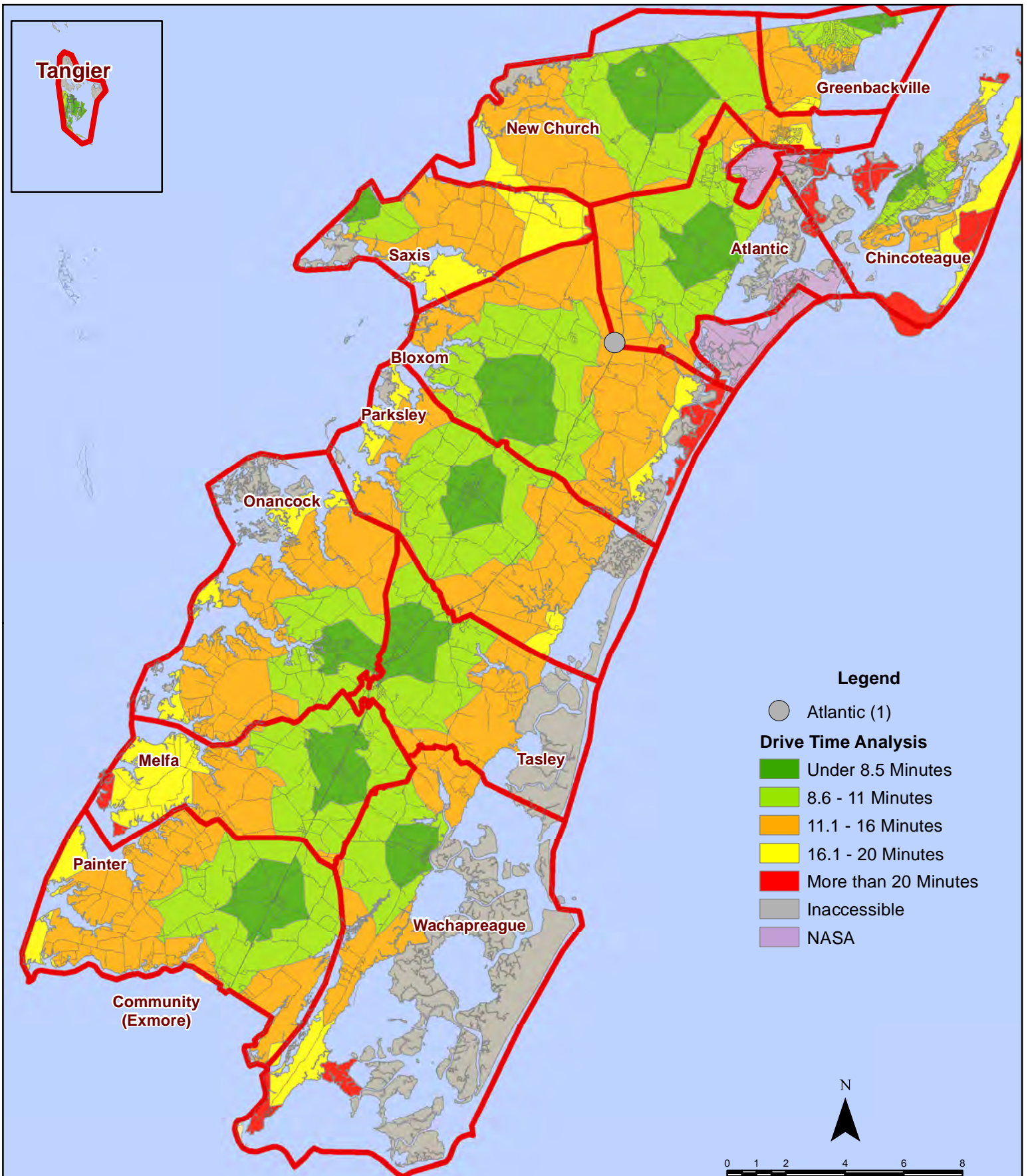
January 2019 Fire Calls With Response Time Greater Than 20 Mins.



All points are plotted using X and Y coordinates provided by the ESVA 911 Center.
Points maybe be plotted over one another when they are in close proximity.

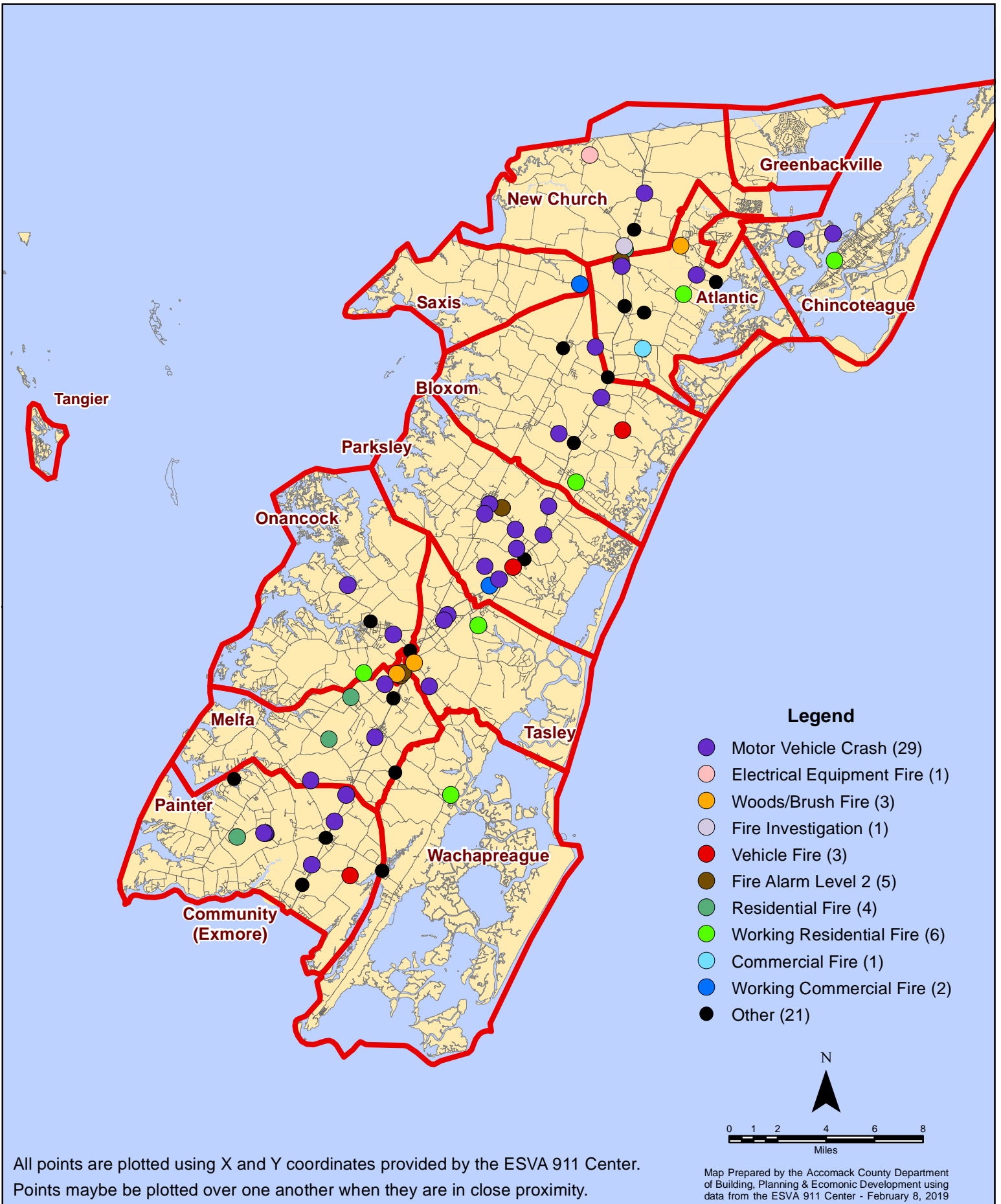
Map Prepared by the Accomack County Department of Building, Planning & Economic Development using data from the ESVA 911 Center - February 8, 2019

January 2019 Fire Calls With Response Time Greater Than 20 Mins.



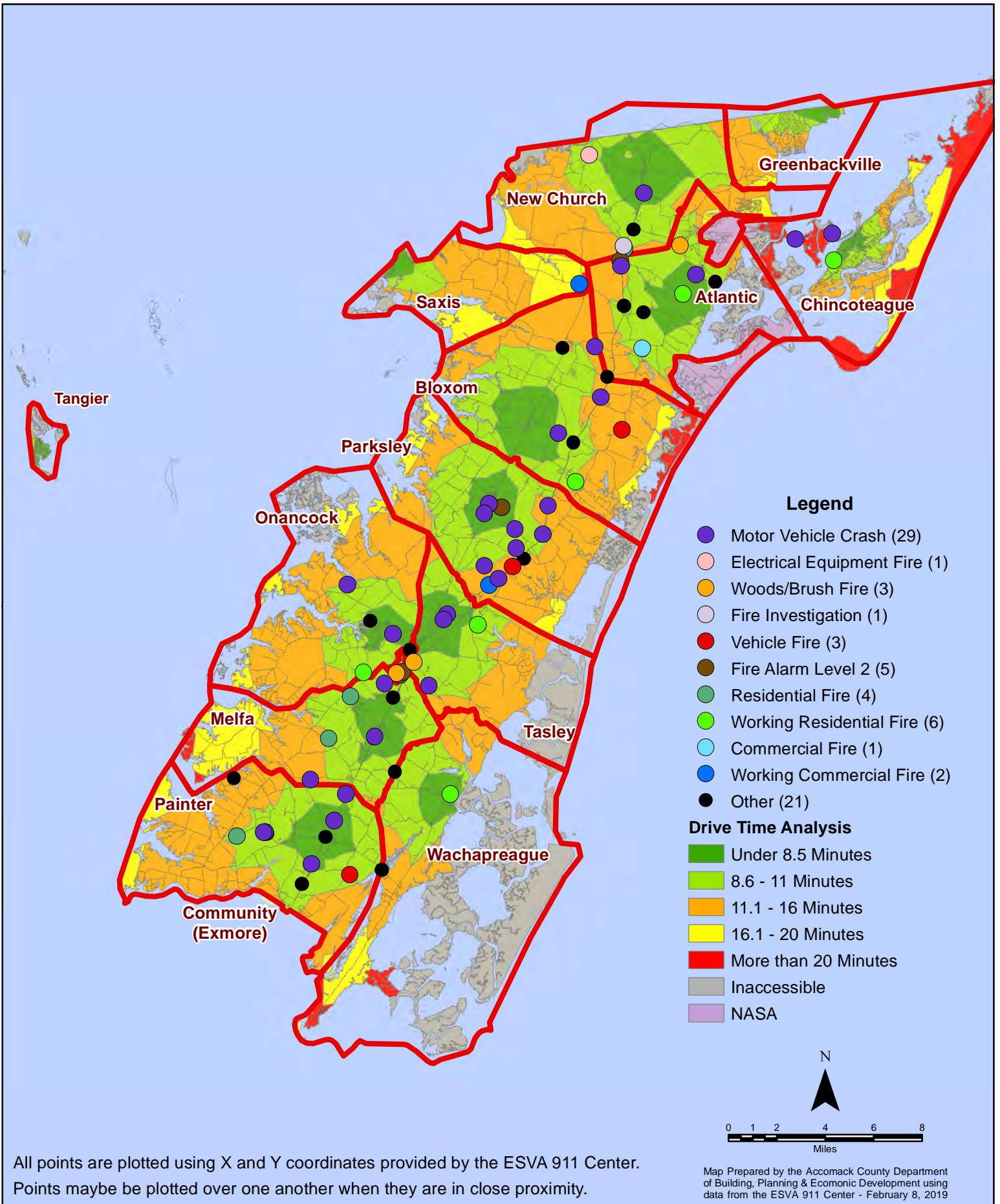
All points are plotted using X and Y coordinates provided by the ESVA 911 Center. Points maybe be plotted over one another when they are in close proximity.

January 2019 Fire Calls By Type



All points are plotted using X and Y coordinates provided by the ESVA 911 Center. Points may be plotted over one another when they are in close proximity.

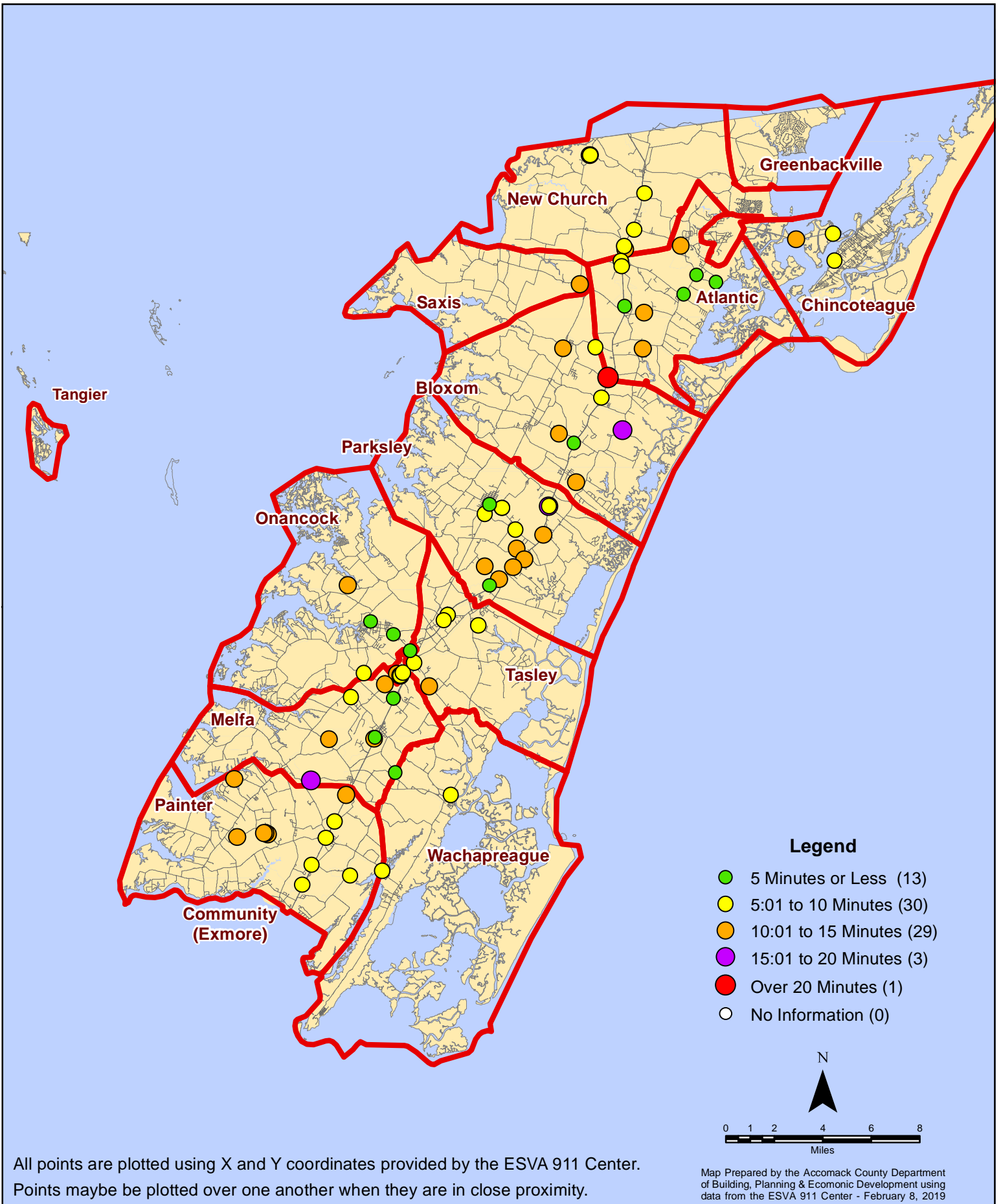
January 2019 Fire Calls By Type



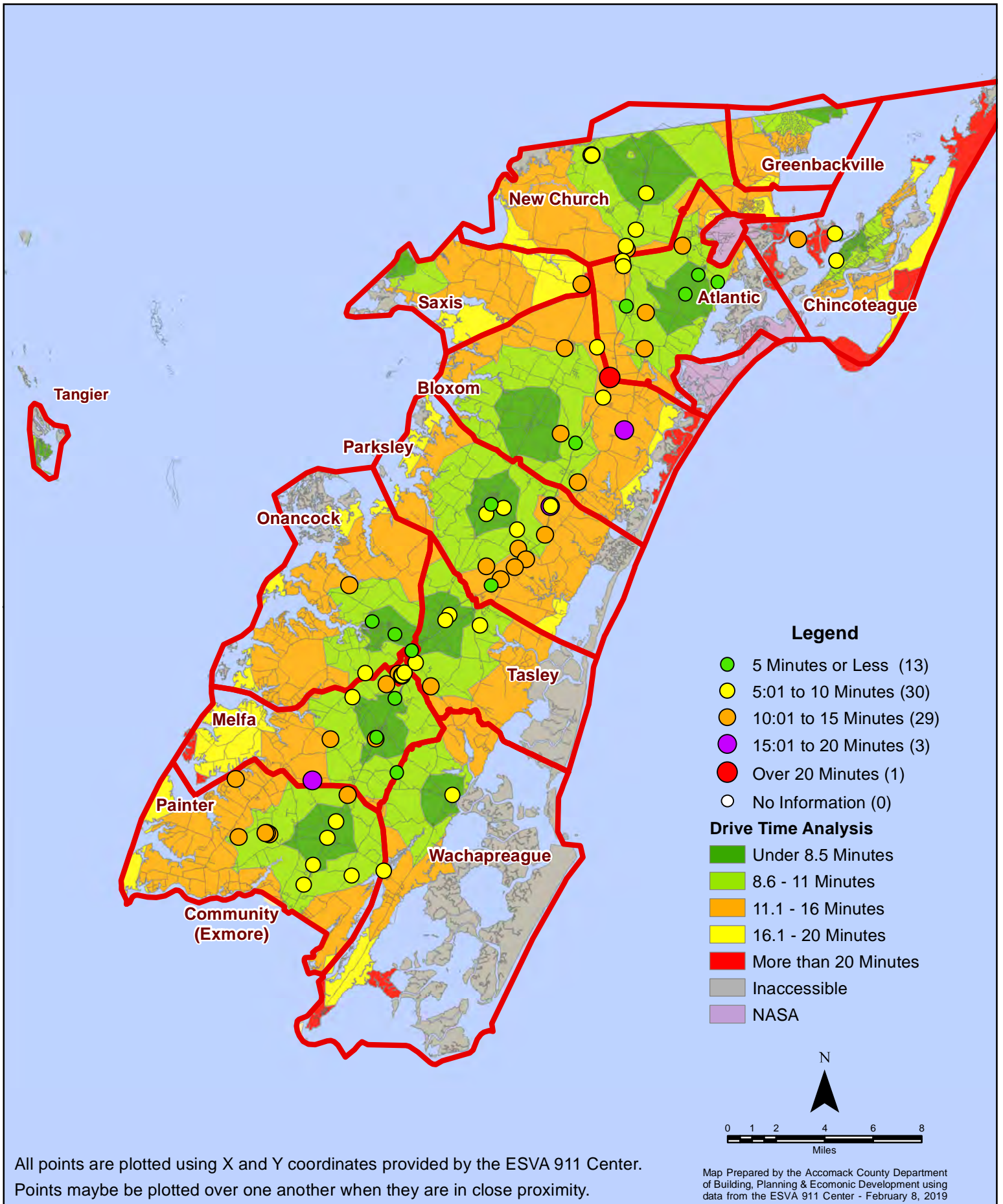
All points are plotted using X and Y coordinates provided by the ESVA 911 Center. Points may be plotted over one another when they are in close proximity.

Map Prepared by the Accomack County Department of Building, Planning & Economic Development using data from the ESVA 911 Center - February 8, 2019

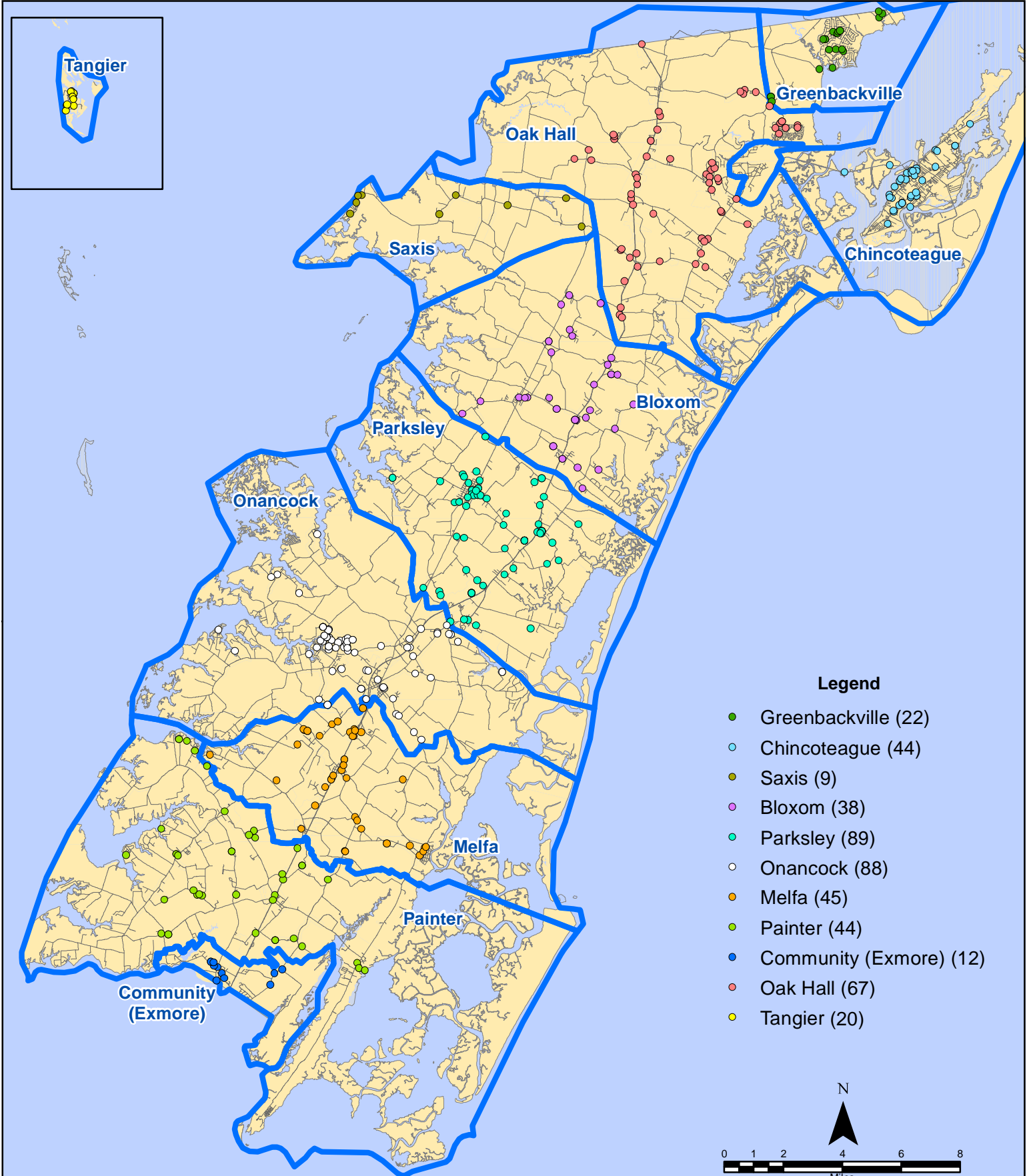
January 2019 Fire Calls By Response Time



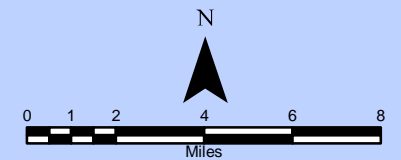
January 2019 Fire Calls By Response Time



January 2019 EMS Calls By District

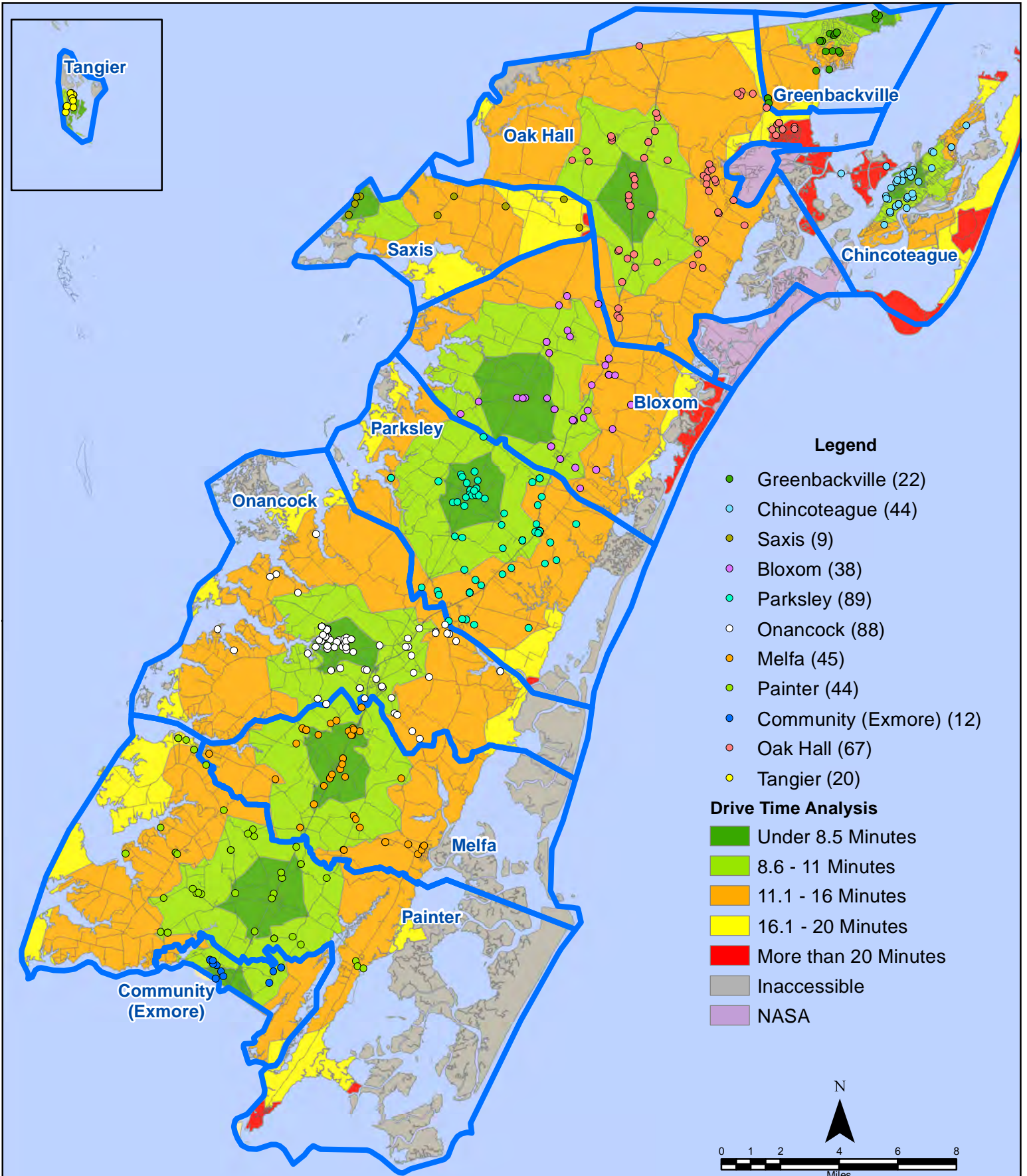


All points are plotted using X and Y coordinates provided by the ESVA 911 Center.
 Points may be plotted over one another when they are in close proximity.

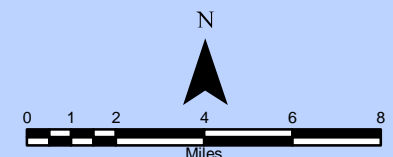


Map Prepared by the Accomack County Department of Building, Planning & Economic Development using data from the ESVA 911 Center - February 8, 2019

January 2019 EMS Calls By District

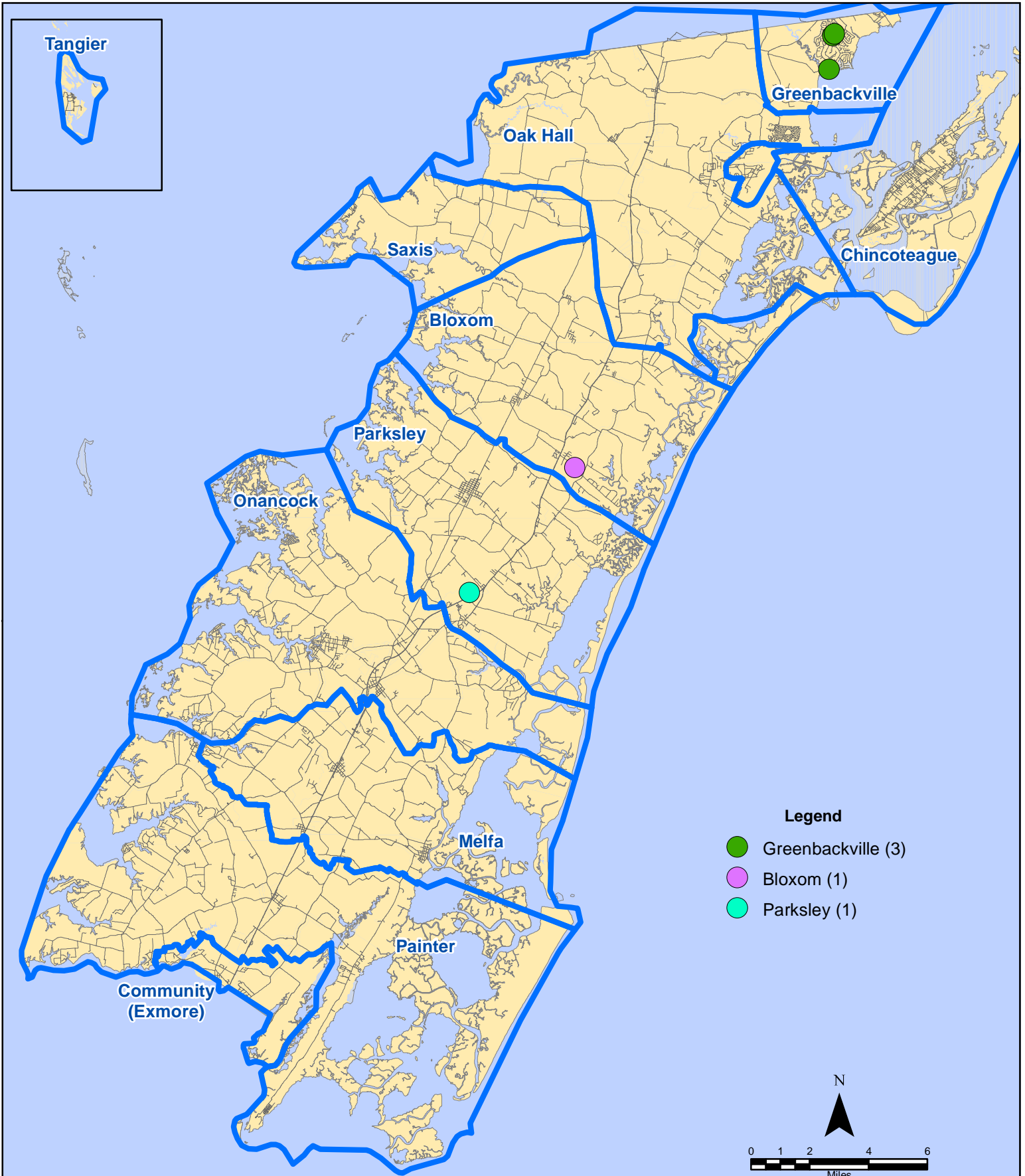


All points are plotted using X and Y coordinates provided by the ESVA 911 Center. Points may be plotted over one another when they are in close proximity.



Map Prepared by the Accomack County Department of Building, Planning & Economic Development using data from the ESVA 911 Center - February 8, 2019

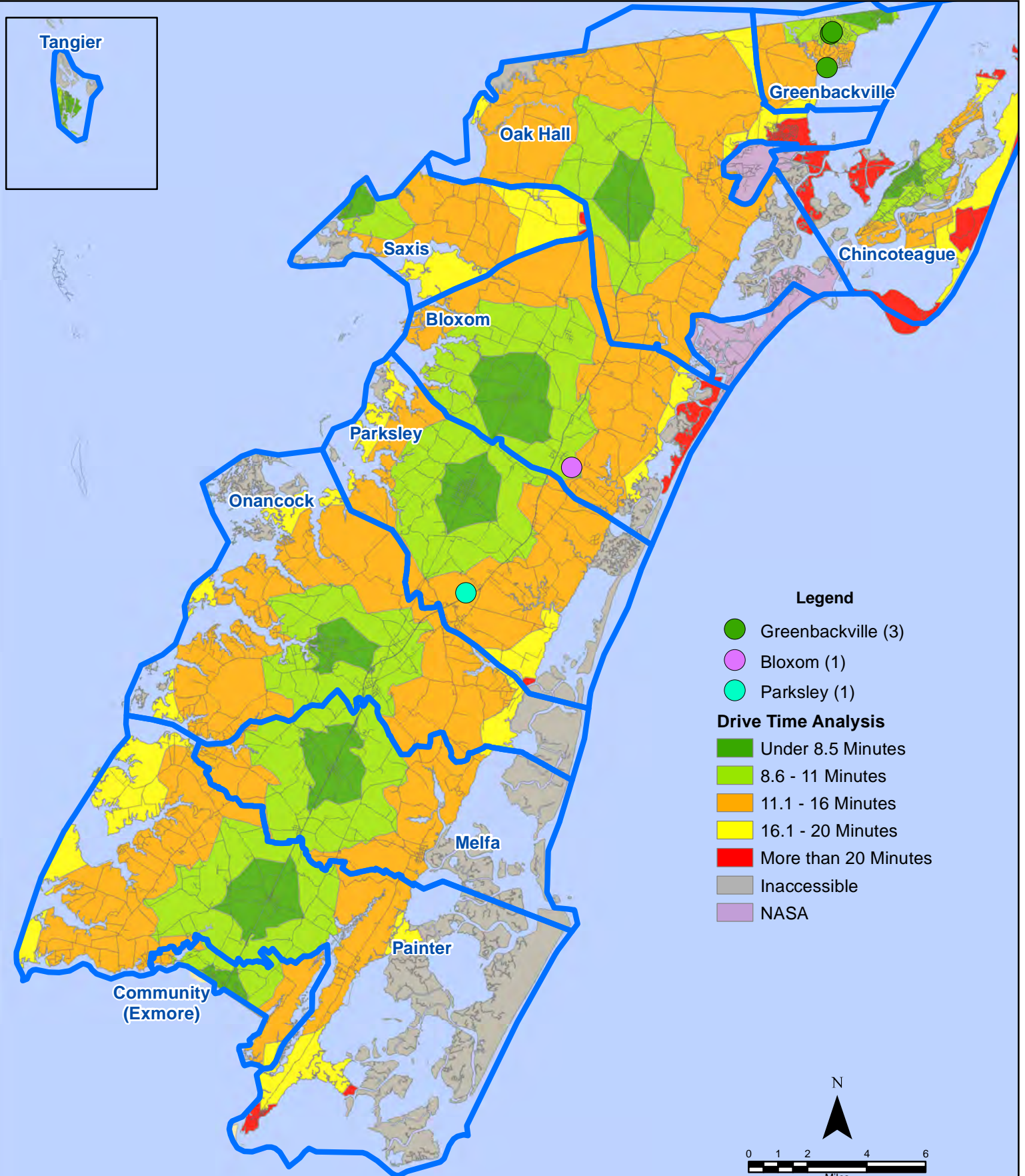
January 2019 EMS Calls With Response Time Greater Than 20 Mins.



All points are plotted using X and Y coordinates provided by the ESVA 911 Center.
Points may be plotted over one another when they are in close proximity.

Map Prepared by the Accomack County Department of Building, Planning & Economic Development using data from the ESVA 911 Center - February 8, 2019

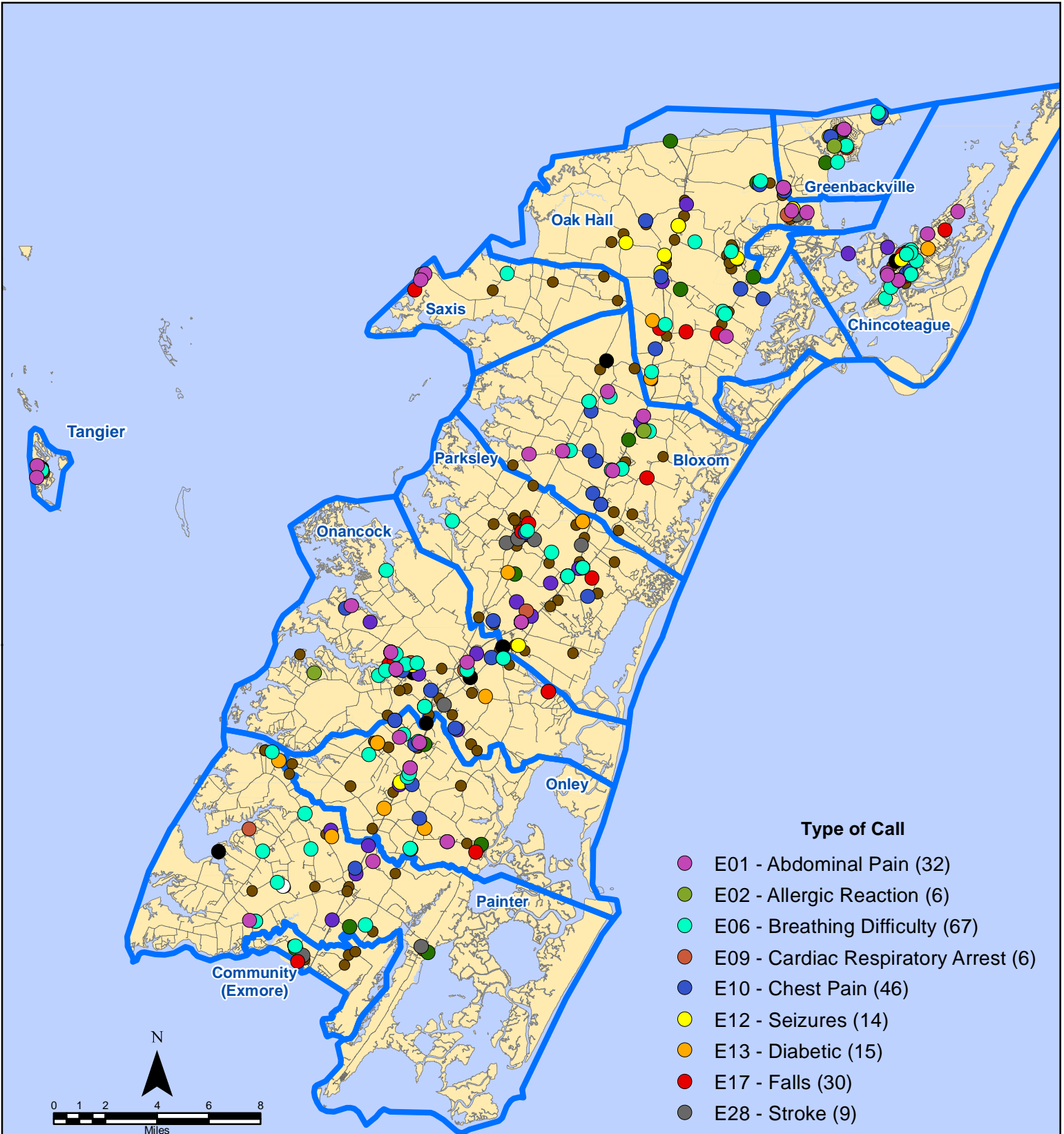
January 2019 EMS Calls With Response Time Greater Than 20 Mins.



All points are plotted using X and Y coordinates provided by the ESVA 911 Center. Points may be plotted over one another when they are in close proximity.

Map Prepared by the Accomack County Department of Building, Planning & Economic Development using data from the ESVA 911 Center - February 8, 2019

January 2019 EMS Calls By Type



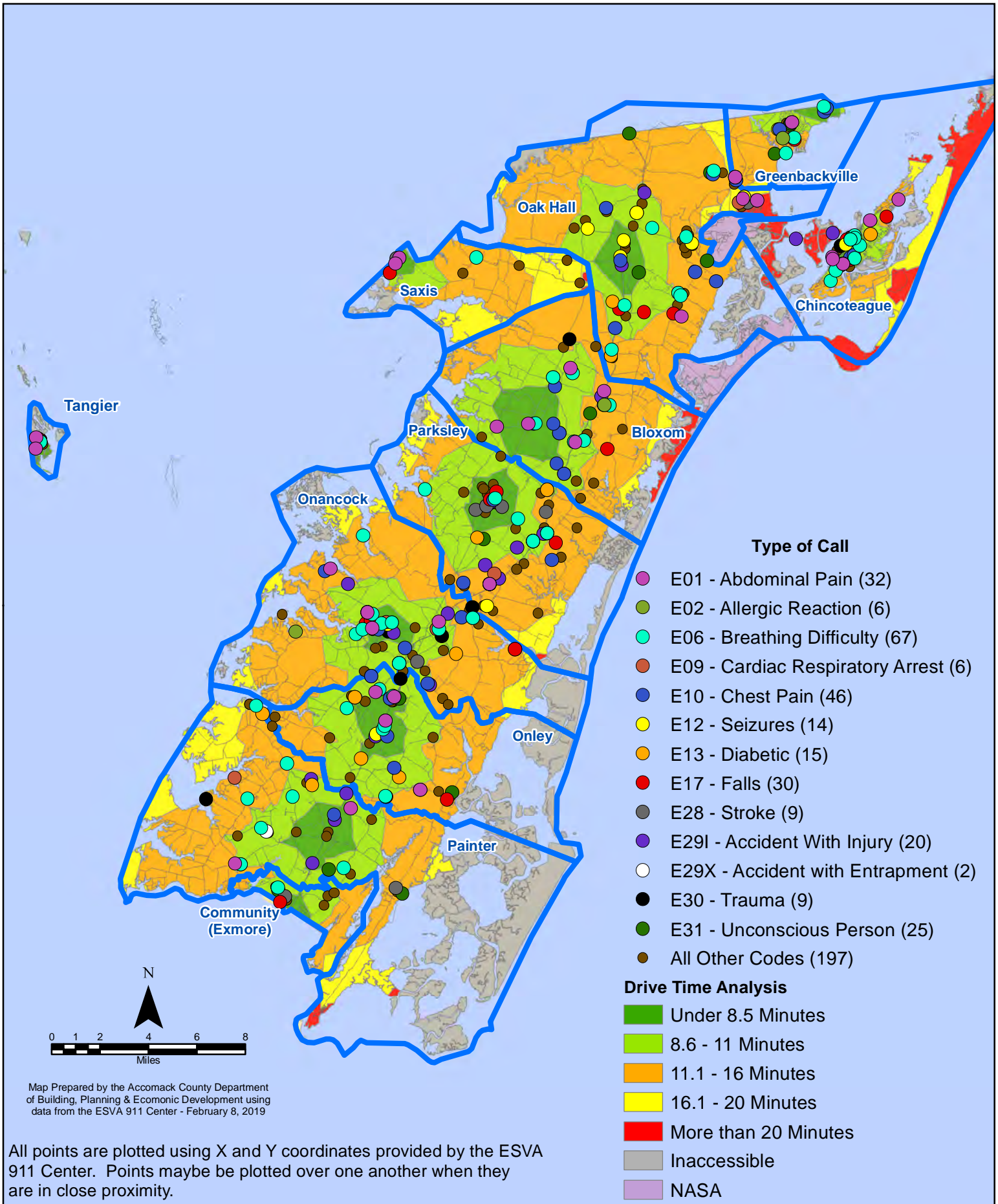
Type of Call

- E01 - Abdominal Pain (32)
- E02 - Allergic Reaction (6)
- E06 - Breathing Difficulty (67)
- E09 - Cardiac Respiratory Arrest (6)
- E10 - Chest Pain (46)
- E12 - Seizures (14)
- E13 - Diabetic (15)
- E17 - Falls (30)
- E28 - Stroke (9)
- E29I - Accident With Injury (20)
- E29X - Accident with Entrapment (2)
- E30 - Trauma (9)
- E31 - Unconscious Person (25)
- All Other Codes (197)

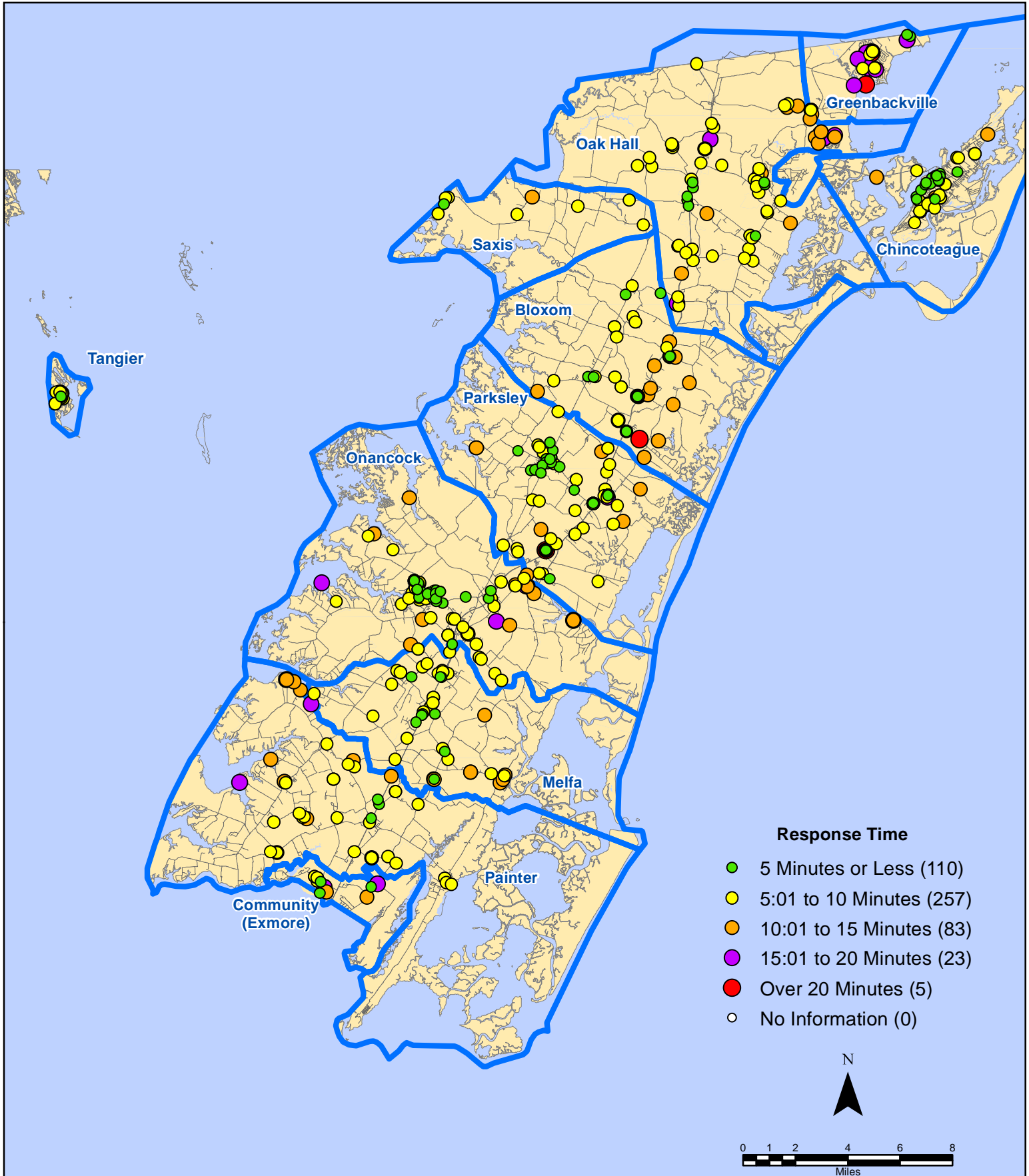
Map Prepared by the Accomack County Department of Building, Planning & Economic Development using data from the ESVA 911 Center - February 8, 2019

All points are plotted using X and Y coordinates provided by the ESVA 911 Center. Points may be plotted over one another when they are in close proximity.

January 2019 EMS Calls By Type



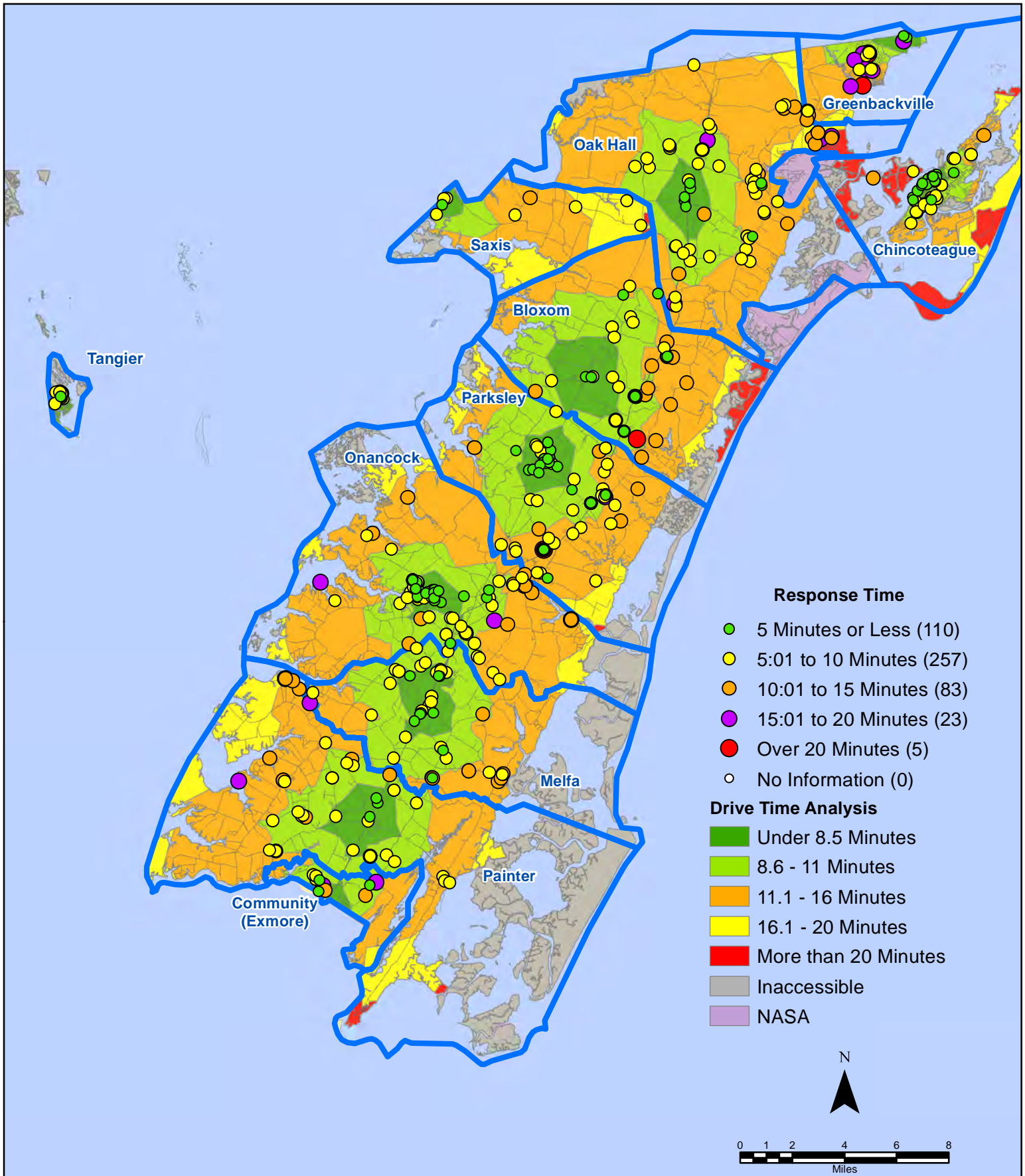
January 2019 EMS Calls By Response Time



All points are plotted using X and Y coordinates provided by the ESVA 911 Center. Points may be plotted over one another when they are in close proximity.

Map Prepared by the Accomack County Department of Building, Planning & Economic Development using data from the ESVA 911 Center - February 8, 2019

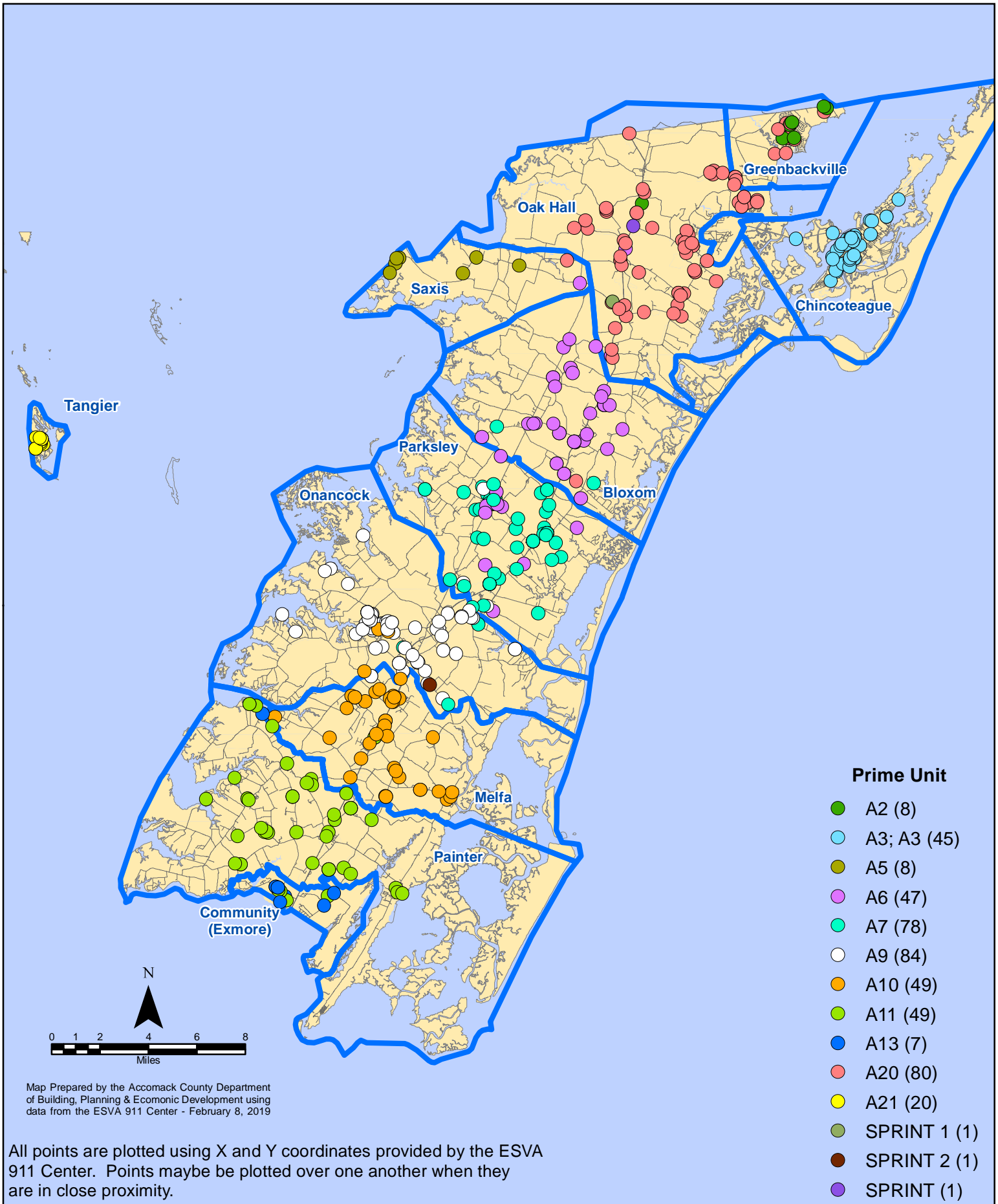
January 2019 EMS Calls By Response Time



All points are plotted using X and Y coordinates provided by the ESVA 911 Center. Points may be plotted over one another when they are in close proximity.

Map Prepared by the Accomack County Department of Building, Planning & Economic Development using data from the ESVA 911 Center - February 8, 2019

January 2019 EMS Calls By Prime Unit



January 2019 EMS Calls By Prime Unit

