

February 2019

Fire - Performance Measure Data *					
Response District	Total Calls in District	Greater than 20 min. Response Time	Calls Handled by other agency	Longest Response Time	Overall Station Benchmark %
New Church	3	0	0	0:12:19	100.0%
Greenbackville	4	0	0	0:13:38	100.0%
Chincoteague	3	0	0	0:09:45	100.0%
Atlantic	5	0	0	0:16:48	100.0%
Saxis	1	0	0	0:06:24	100.0%
Bloxom	9	2	0	0:21:13	77.8%
Parksley	7	1	1	0:23:51	85.7%
Tasley	4	0	0	0:13:07	100.0%
Onancock	6	0	0	0:11:31	100.0%
Melfa	12	1	1	0:23:34	91.7%
Wachapreague	2	0	0	0:09:34	100.0%
Painter	6	0	0	0:18:43	100.0%
Tangier	2	0	0	0:08:28	100.0%
System Totals	64	4	2	0:23:51	93.8%

EMS - Performance Measure Data						
Response District	Total Calls in District	Greater than 20 min. Response Time	Longest Response Time	Calls Handled by other agency	Station Benchmark Compliance %	Overall Station Reliability %
Greenbackville	18	1	0:24:16	11	94.4%	38.9%
Chincoteague	37	0	0:16:28	2	100.0%	94.6%
Saxis	7	0	0:10:05	1	100.0%	85.7%
Bloxom	41	0	0:16:19	2	100.0%	95.1%
Parksley	79	0	0:19:04	7	100.0%	91.1%
Onancock	74	1	0:25:30	6	98.6%	91.9%
Melfa	45	0	0:12:30	2	100.0%	95.6%
Wachapreague (Painter)	31	0	0:17:40	3	100.0%	90.3%
Oak Hall	70	0	0:19:21	2	100.0%	97.1%
Tangier	15	0	0:16:00	0	100.0%	100.0%
Community (Exmore)	9	0	0:14:42	2	100.0%	77.8%
System Totals	426	2	0:25:30	38	99.5%	91.1%

	Station Giving Aid														
	Greenbackville	Chincoteague	Saxis	Bloxom	Parksley	Onancock	Melfa	Wachapreague/Painter	Oak Hall	Community (Exmore)	Northampton	Wallops	NORS	2nd Call	3rd Call
Greenbackville		1							10					11	
Chincoteague									2					2	
Saxis									1				1		
Bloxom					2									2	
Parksley			1	6									4	3	
Onancock							6						1	5	
Melfa						2							1	1	
Wachapreague (Painter)							1			1	1		2	1	
Oak Hall	1	1												1	1
Community (Exmore)								1					2		
Northampton Co.															
Wallops															
Totals	1	2	1	6	2	2	7	1	13	1	2	0	22	15	1

Hospital Destination by Unit	Riverside - Shore Memorial		
	PRMC	Other	
Greenbackville	4	3	
Chincoteague	13	12	
Saxis	7		
Bloxom	30	3	
Parksley	58		
Onancock	50		
Melfa	39		
Wachapreague (Painter)	23		
Oak Hall	39		
Wallops			
Totals	263	18	0

Benchmark = The Accomack County Board of Supervisors established a 20 minute standard for emergency response.

NORS = No Response by station or the call was handled by another station or agency.

2nd Call = 2nd ambulance call received while first ambulance was on another call.

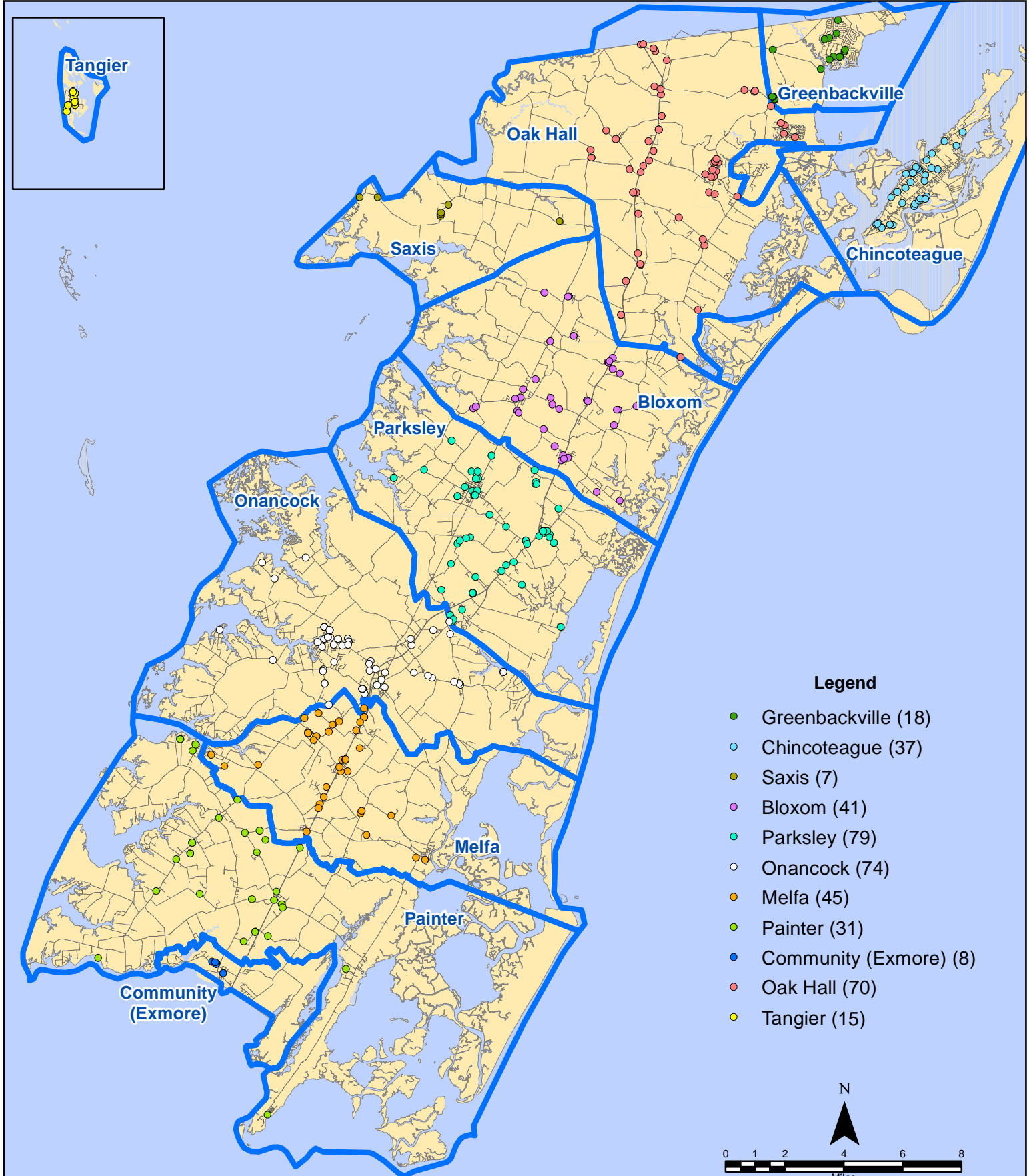
3rd Call = 3rd ambulance call received while first & second ambulances were on other calls.

* This data excludes F1 Med (Medical Assist) calls in the Fire Data.

This information was prepared using data supplied by the Eastern Shore of Virginia 911 Center. This information is original incident data only and may not be representative of all units and/or stations who responded to an incident.

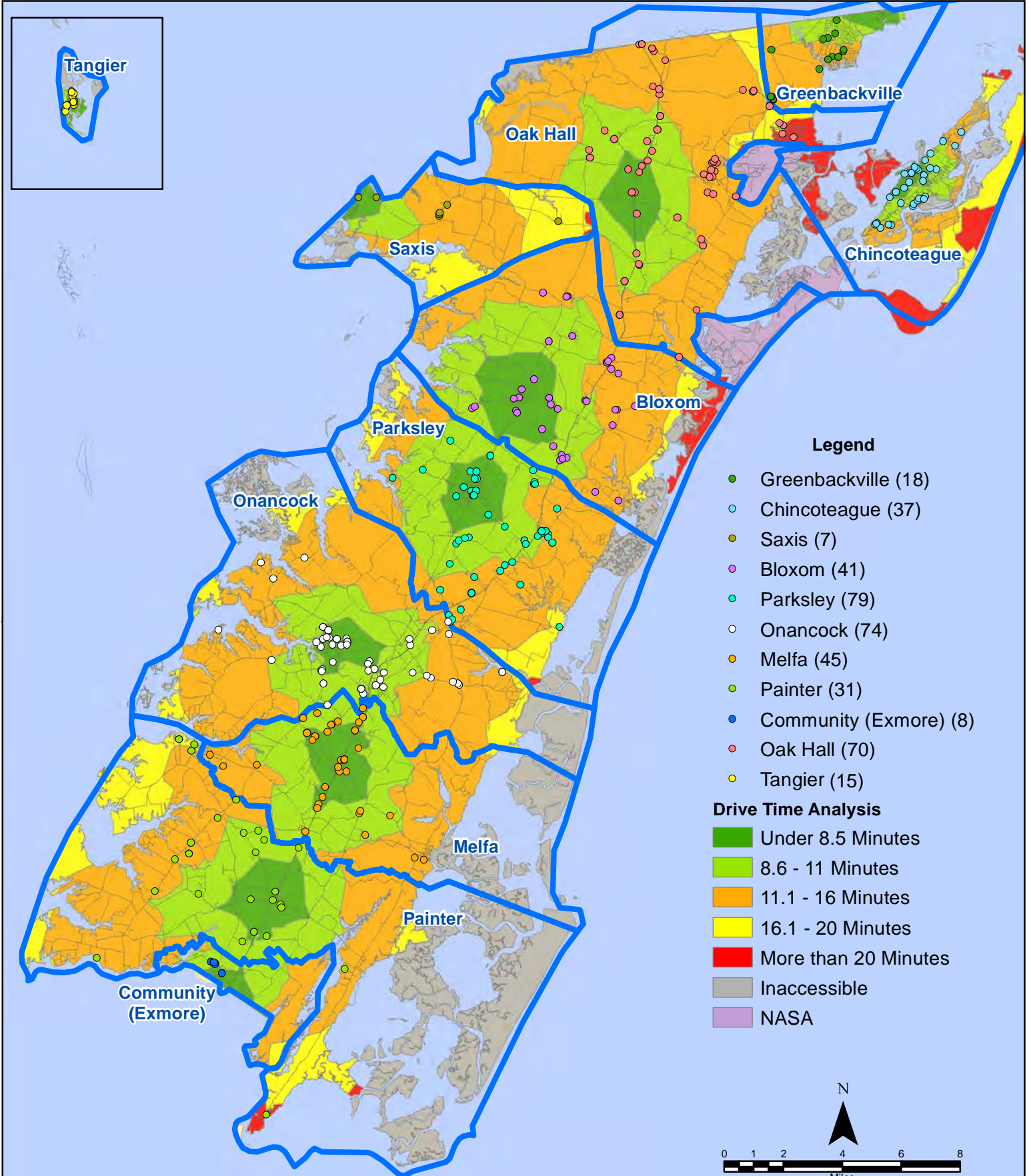
Station Receiving Aid

January 2019 EMS Calls By District

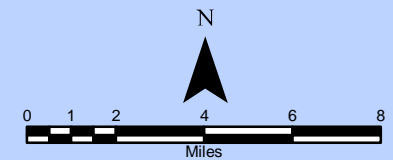


All points are plotted using X and Y coordinates provided by the ESVA 911 Center.
 Points may be plotted over one another when they are in close proximity.

January 2019 EMS Calls By District

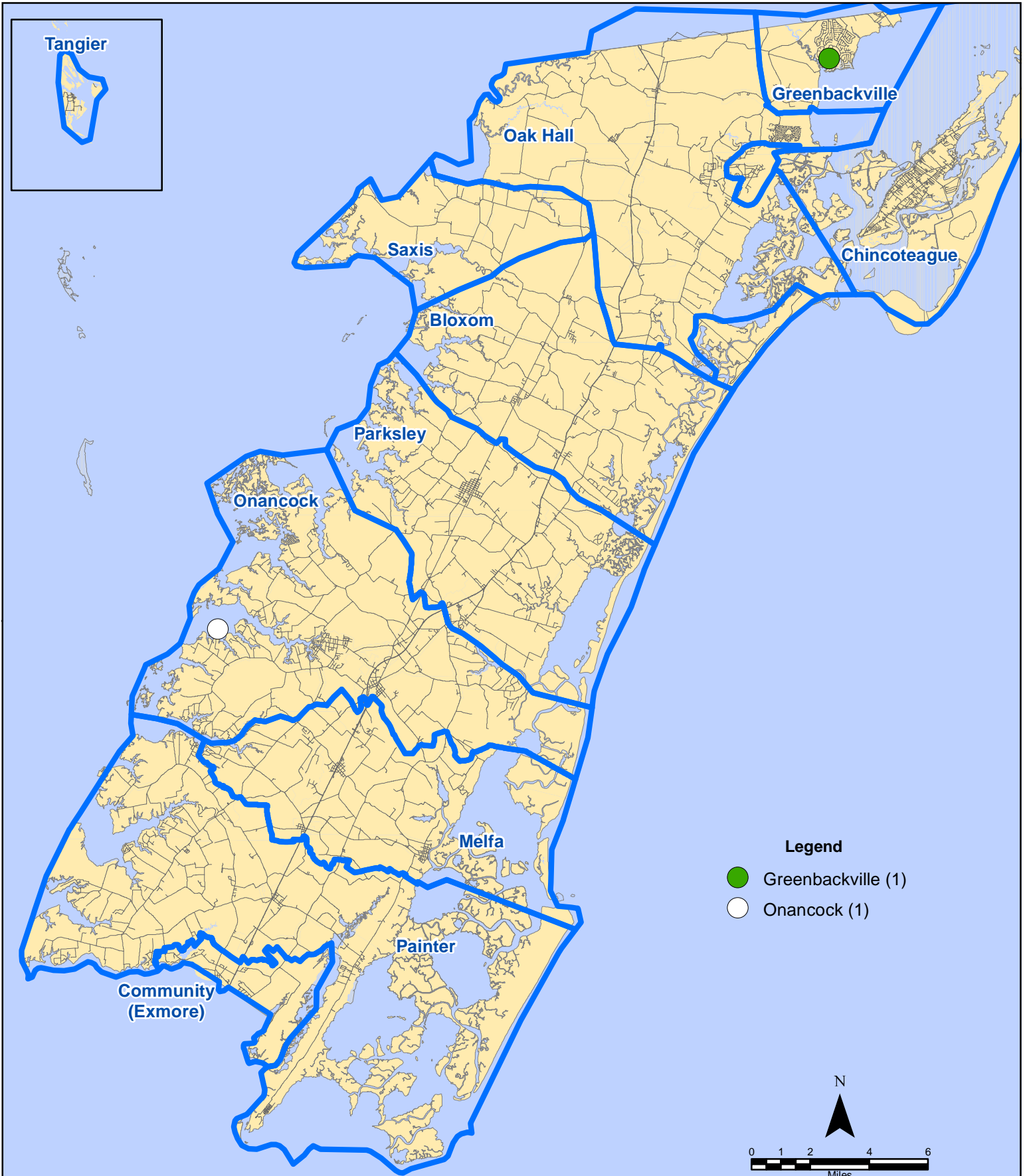


All points are plotted using X and Y coordinates provided by the ESVA 911 Center. Points may be plotted over one another when they are in close proximity.



Map Prepared by the Accomack County Department of Building, Planning & Economic Development using data from the ESVA 911 Center - March 7, 2019

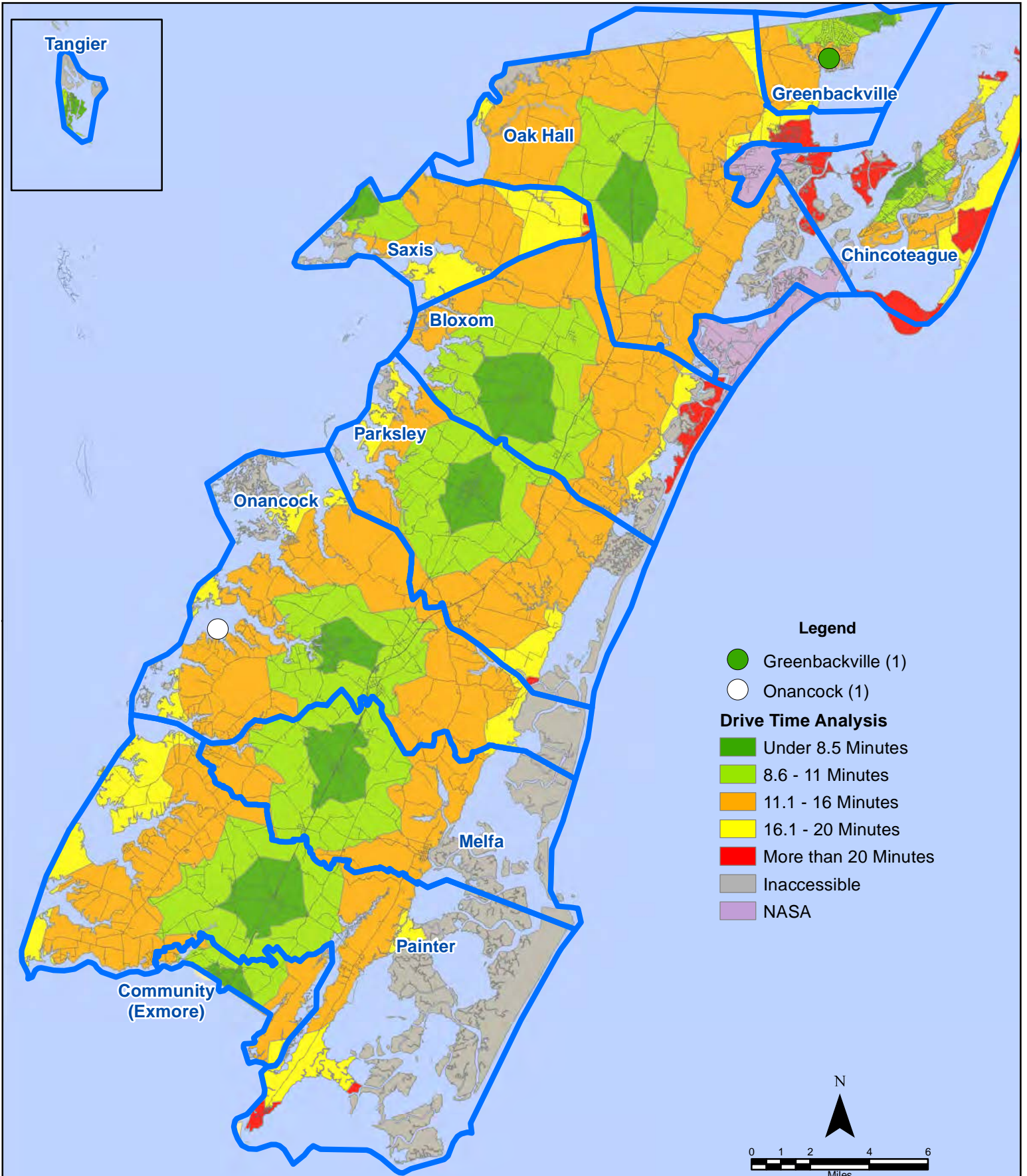
February 2019 EMS Calls With Response Time Greater Than 20 Mins.



All points are plotted using X and Y coordinates provided by the ESVA 911 Center. Points may be plotted over one another when they are in close proximity.

Map Prepared by the Accomack County Department of Building, Planning & Economic Development using data from the ESVA 911 Center - March 7, 2019

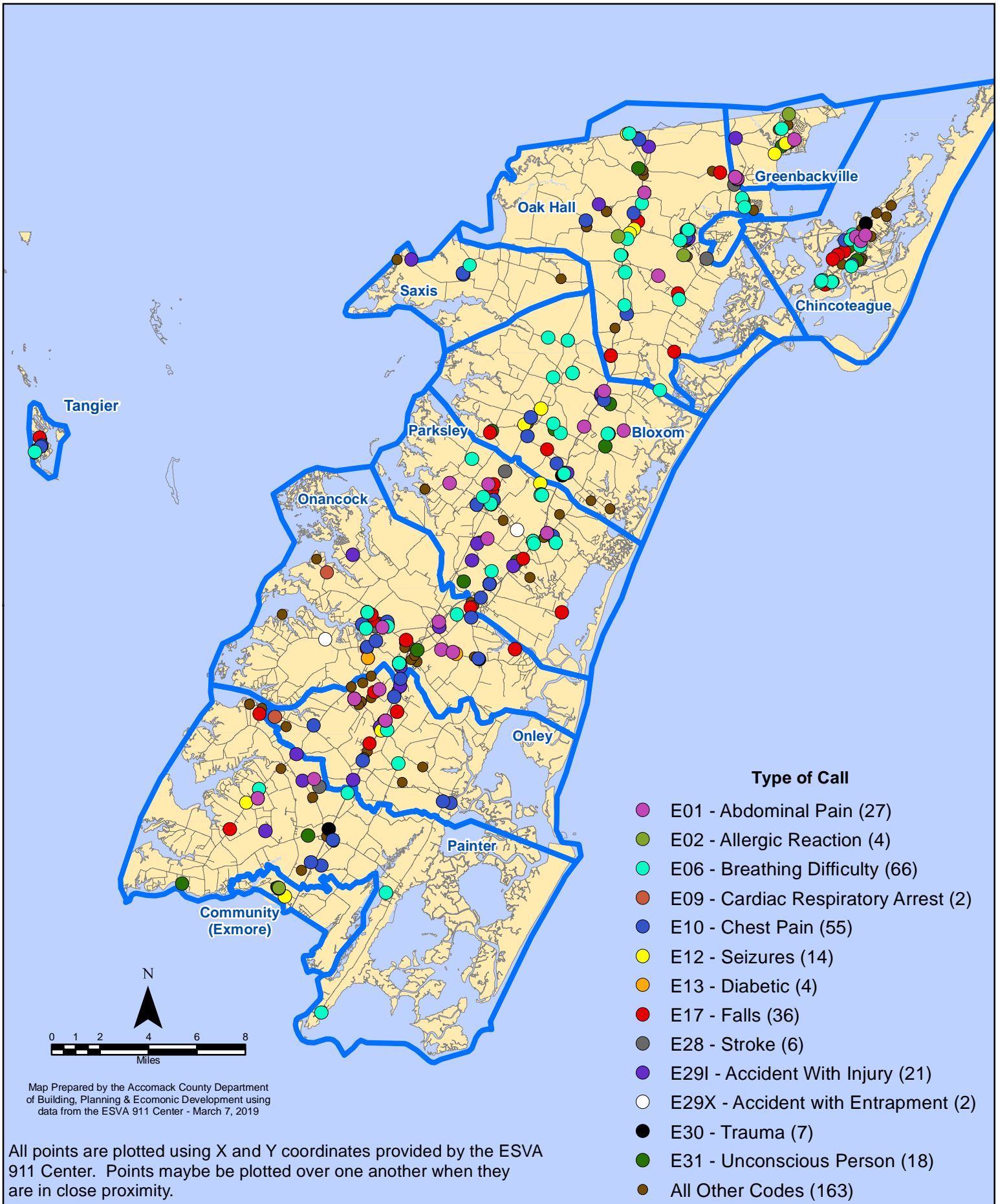
February 2019 EMS Calls With Response Time Greater Than 20 Mins.



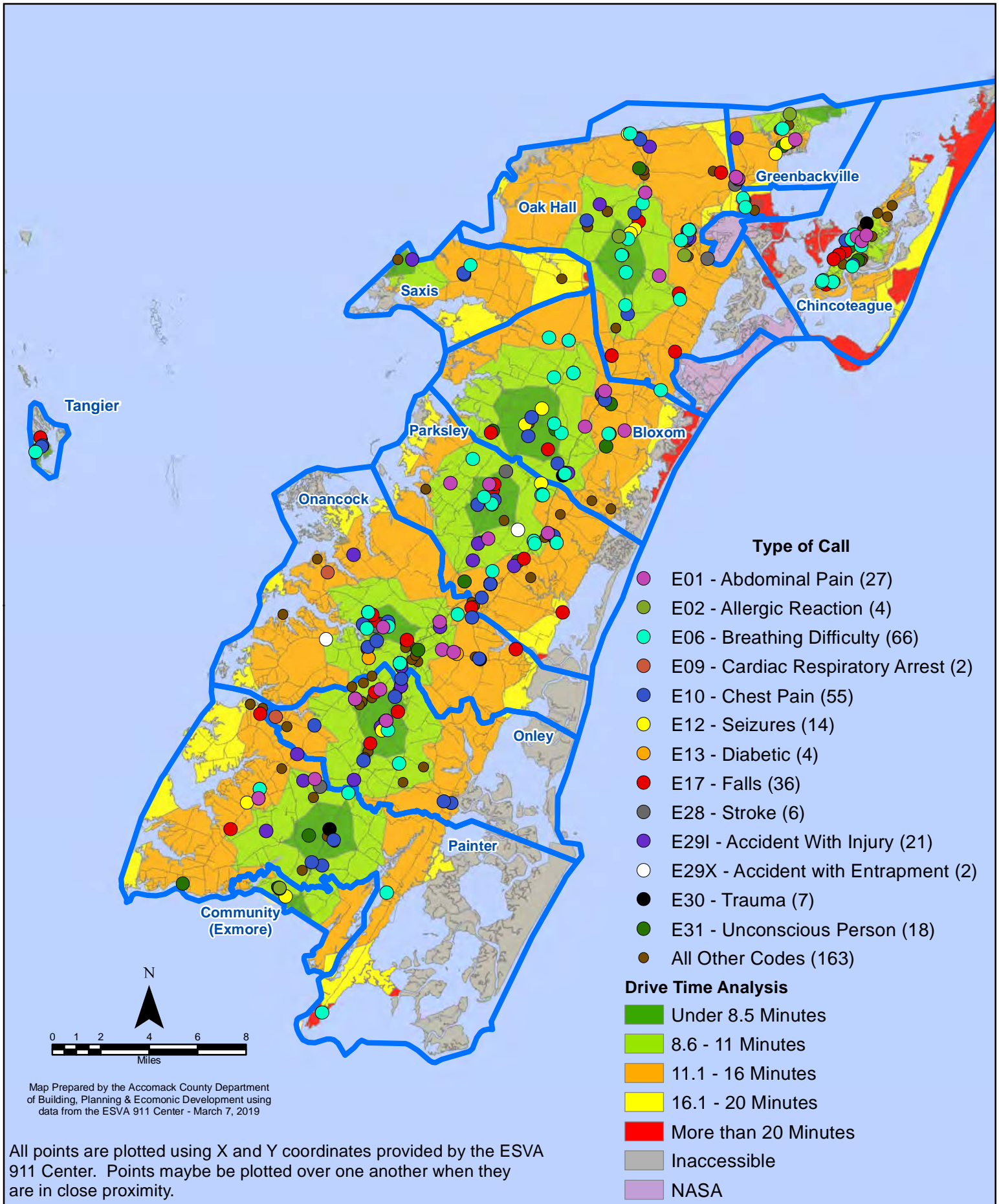
All points are plotted using X and Y coordinates provided by the ESVA 911 Center. Points may be plotted over one another when they are in close proximity.

Map Prepared by the Accomack County Department of Building, Planning & Economic Development using data from the ESVA 911 Center - March 7, 2019

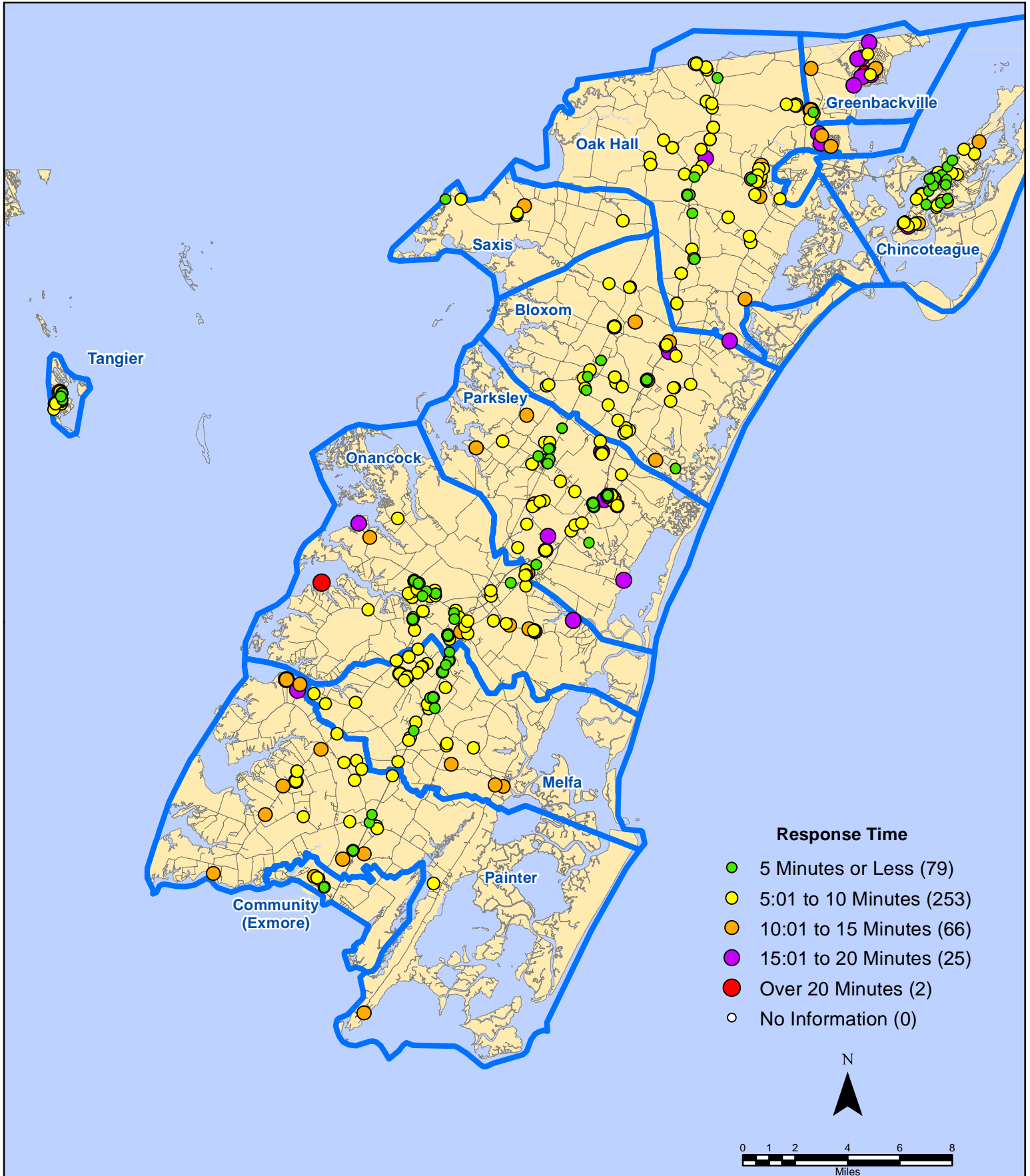
February 2019 EMS Calls By Type



February 2019 EMS Calls By Type



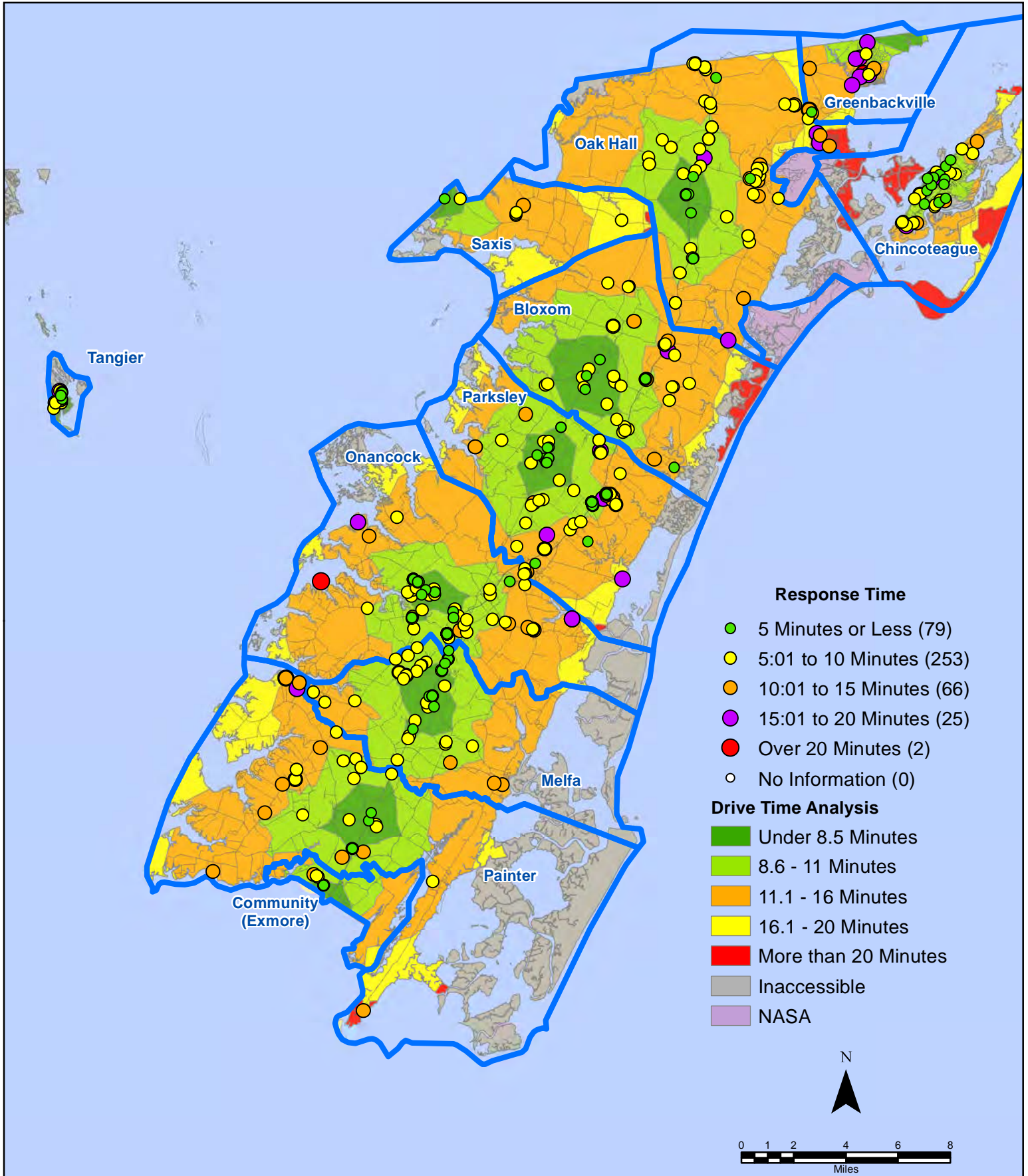
February 2019 EMS Calls By Response Time



All points are plotted using X and Y coordinates provided by the ESVA 911 Center.
Points may be plotted over one another when they are in close proximity.

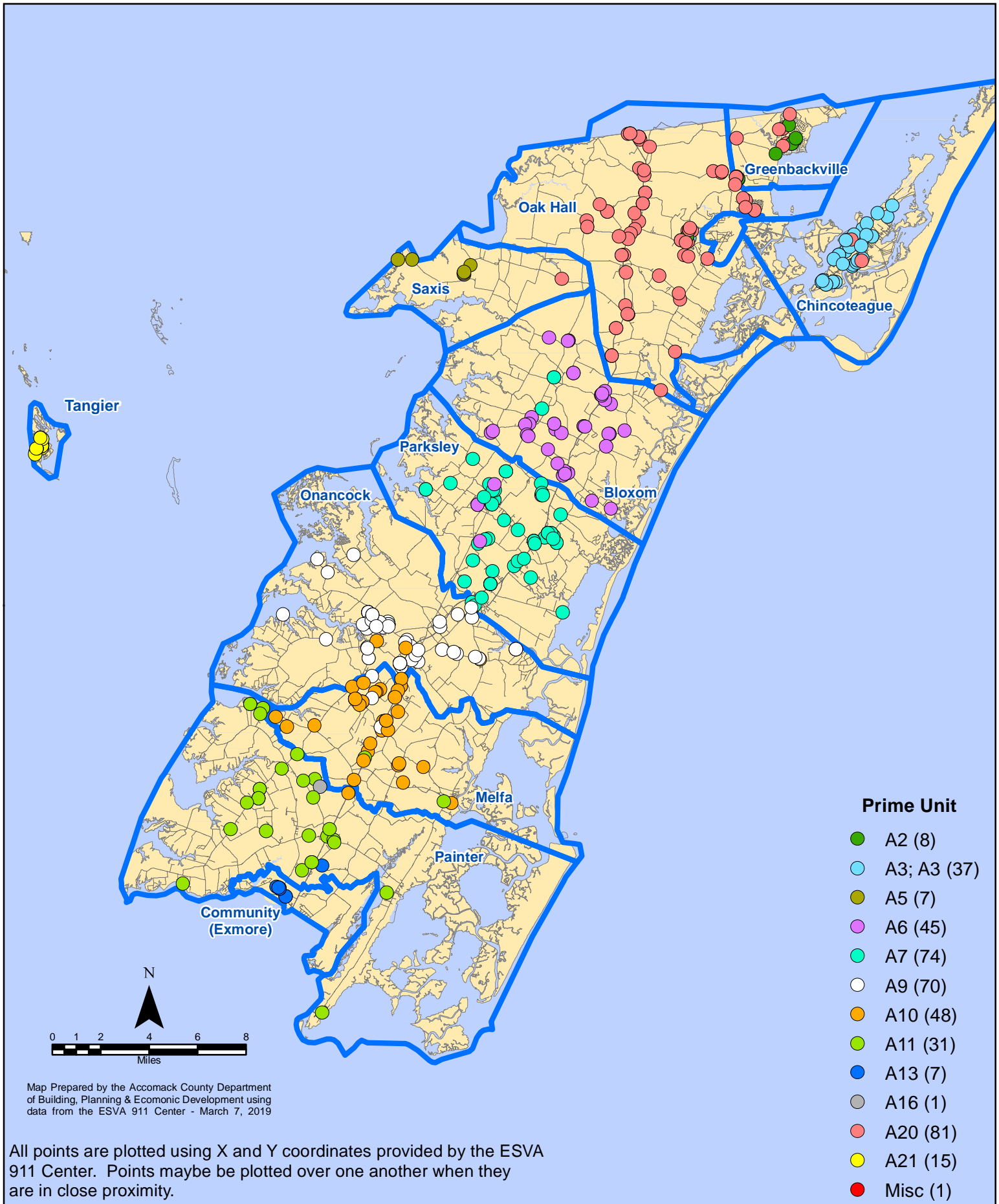
Map Prepared by the Accomack County Department of Building, Planning & Economic Development using data from the ESVA 911 Center - March 7, 2019

February 2019 EMS Calls By Response Time

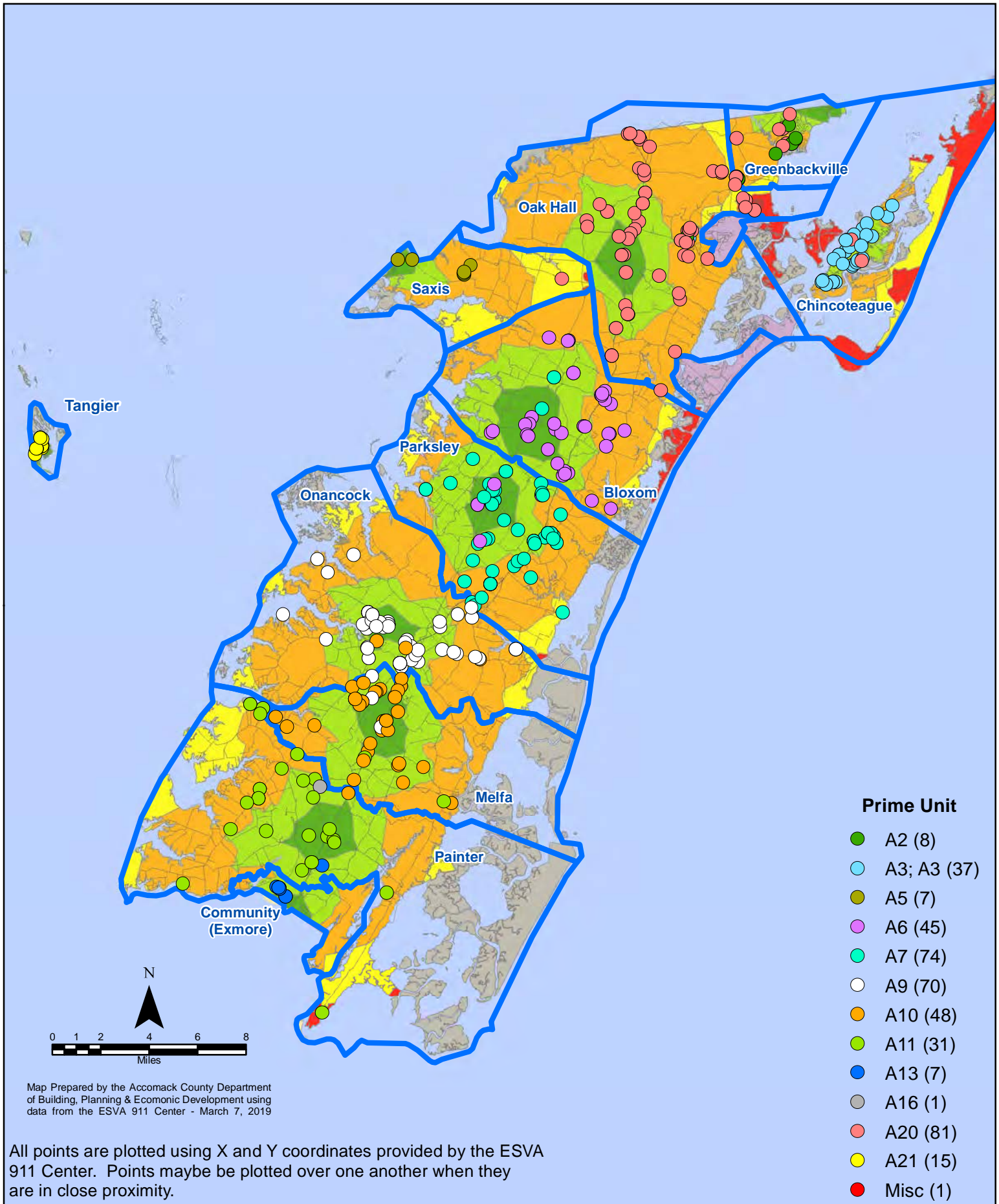


All points are plotted using X and Y coordinates provided by the ESVA 911 Center. Points may be plotted over one another when they are in close proximity.

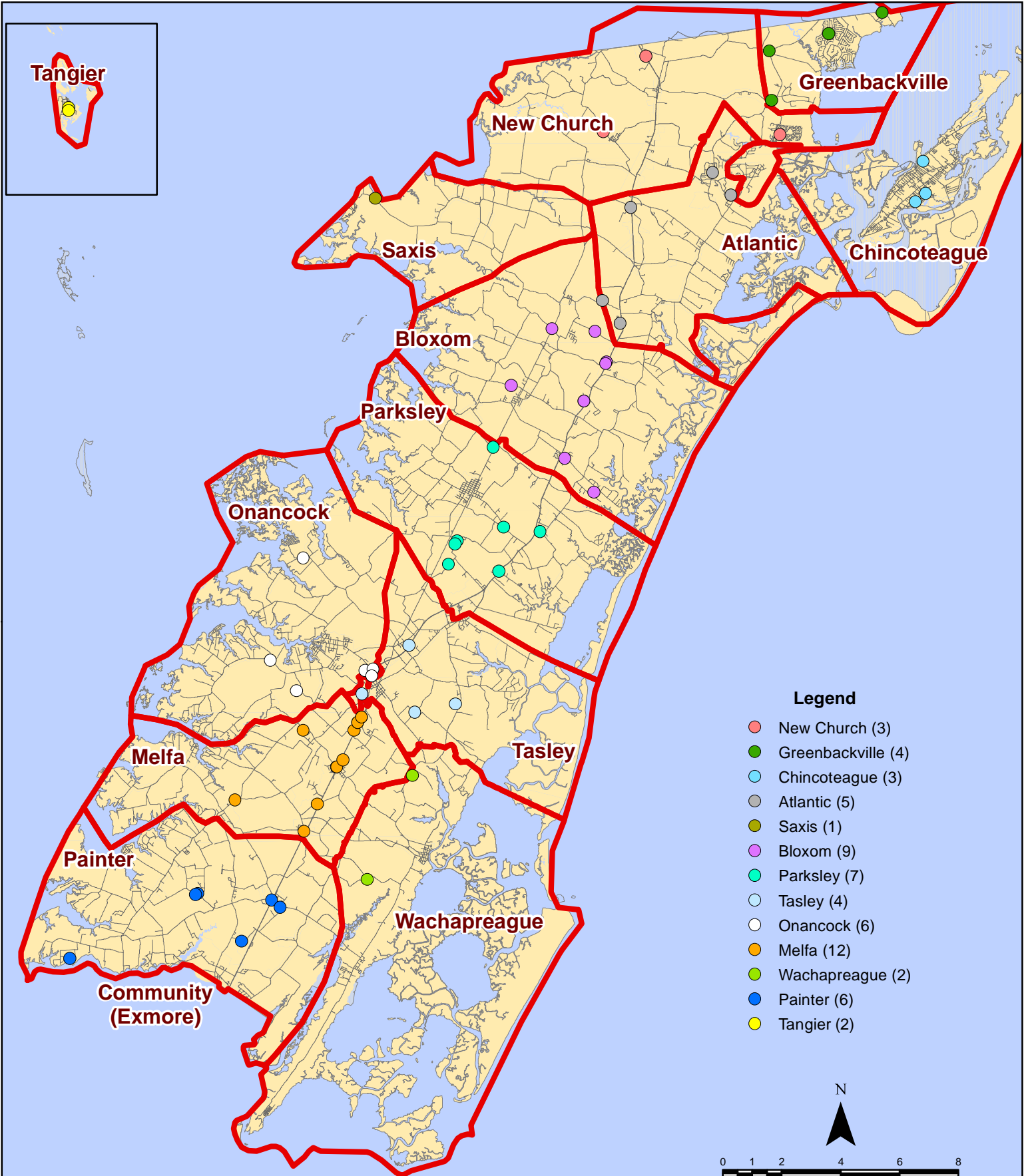
February 2019 EMS Calls By Prime Unit



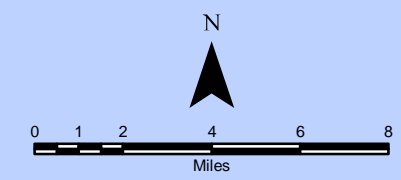
February 2019 EMS Calls By Prime Unit



February 2019 Fire Calls By District

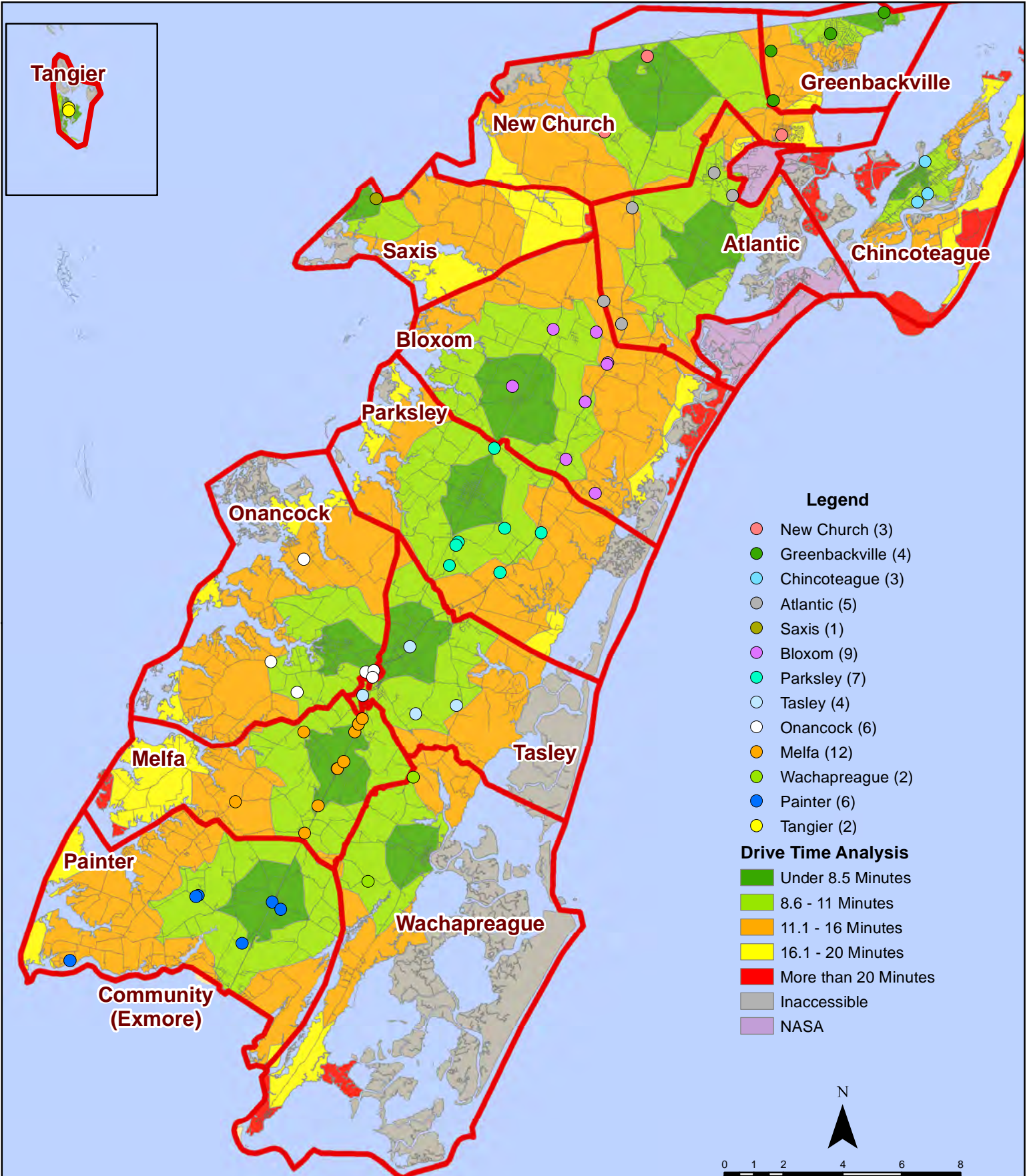


All points are plotted using X and Y coordinates provided by the ESVA 911 Center. Points may be plotted over one another when they are in close proximity.

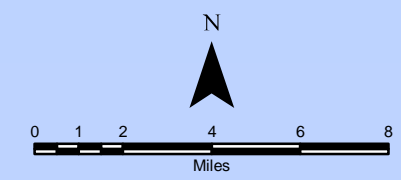


Map Prepared by the Accomack County Department of Building, Planning & Economic Development using data from the ESVA 911 Center - March 7, 2019

February 2019 Fire Calls By District

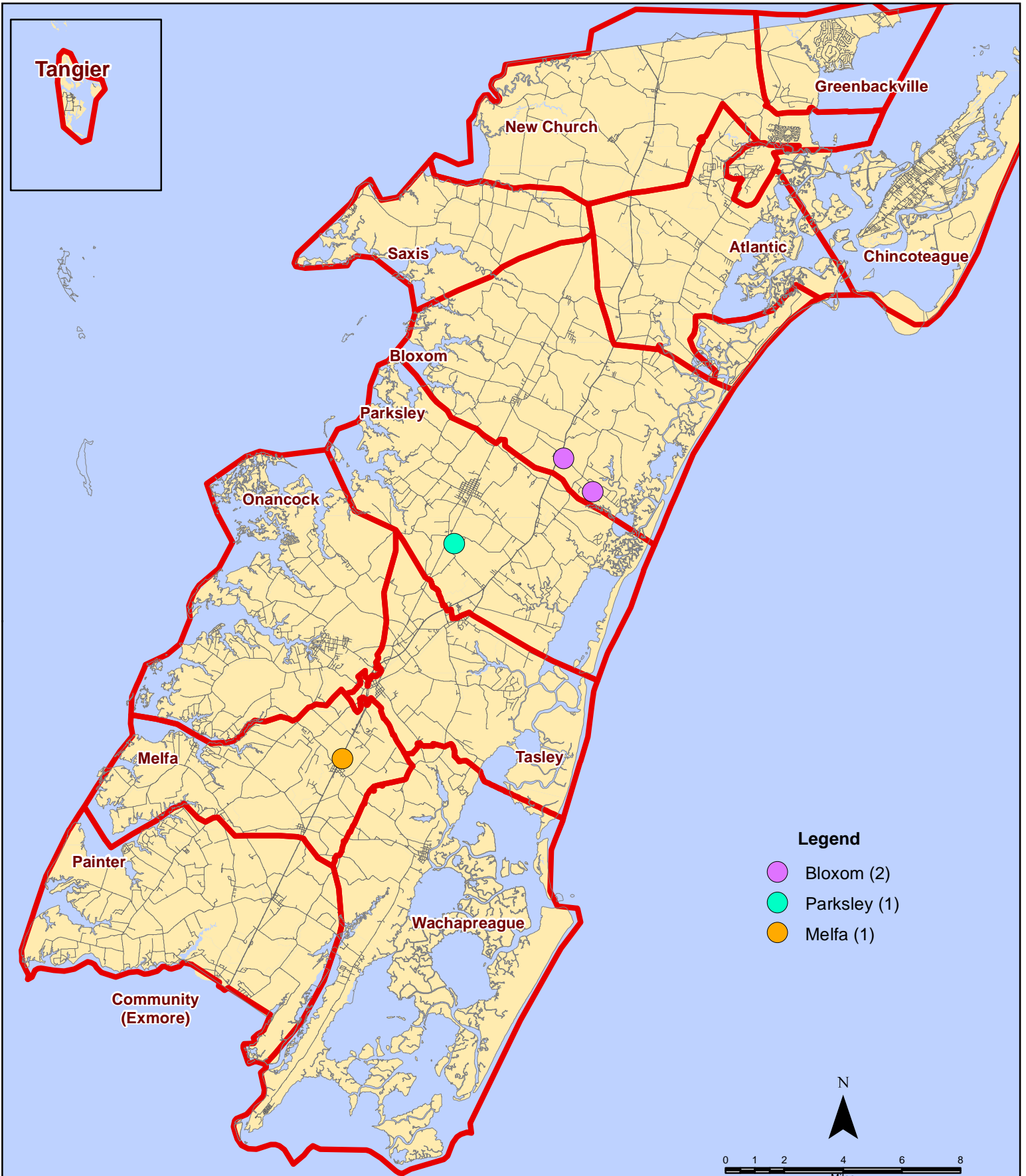


All points are plotted using X and Y coordinates provided by the ESVA 911 Center. Points may be plotted over one another when they are in close proximity.



Map Prepared by the Accomack County Department of Building, Planning & Economic Development using data from the ESVA 911 Center - March 7, 2019

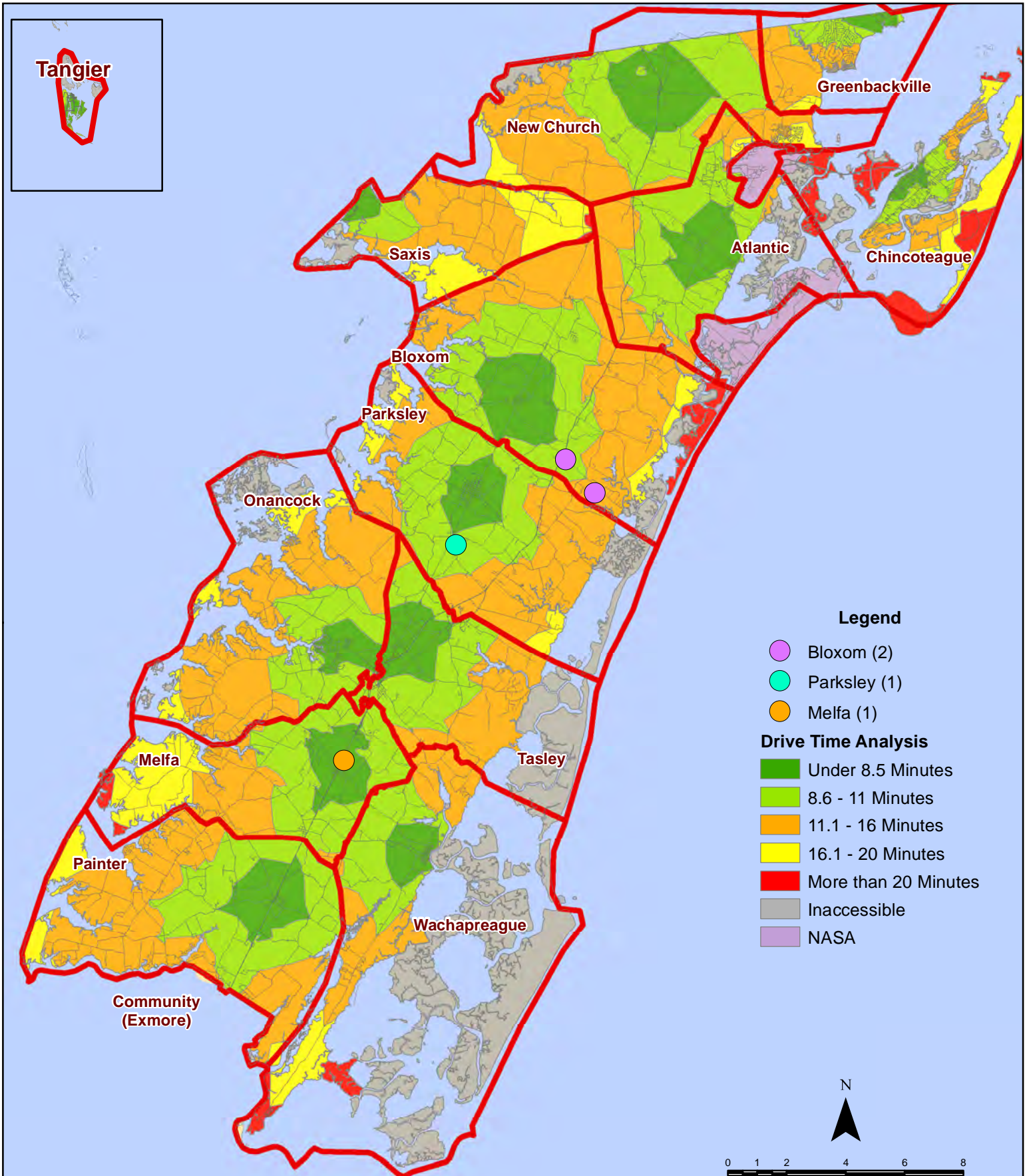
February 2019 Fire Calls With Response Time Greater Than 20 Mins.



All points are plotted using X and Y coordinates provided by the ESVA 911 Center.
Points maybe be plotted over one another when they are in close proximity.

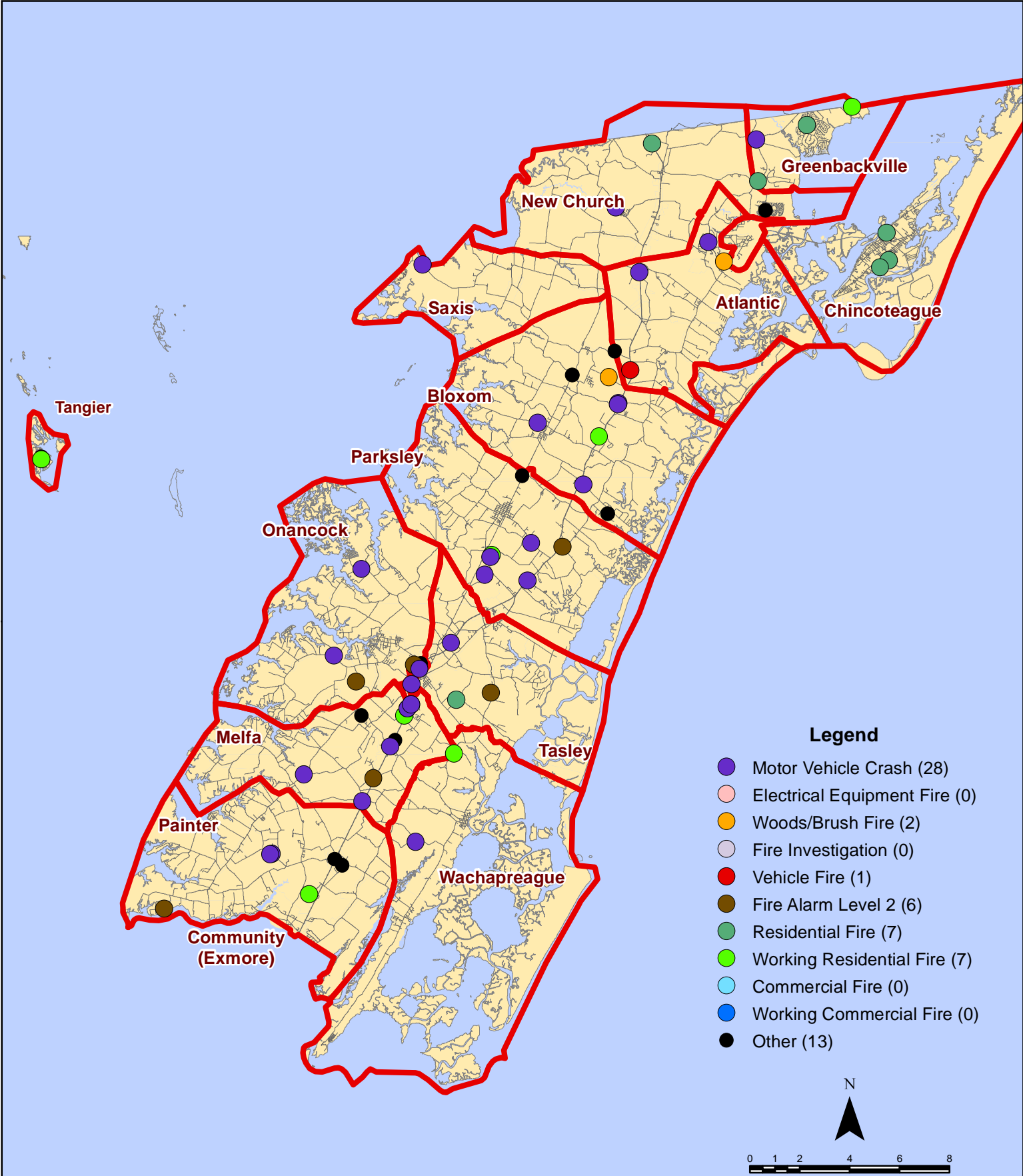
Map Prepared by the Accomack County Department of Building, Planning & Economic Development using data from the ESVA 911 Center - March 7, 2019

February 2019 Fire Calls With Response Time Greater Than 20 Mins.



All points are plotted using X and Y coordinates provided by the ESVA 911 Center. Points may be plotted over one another when they are in close proximity.

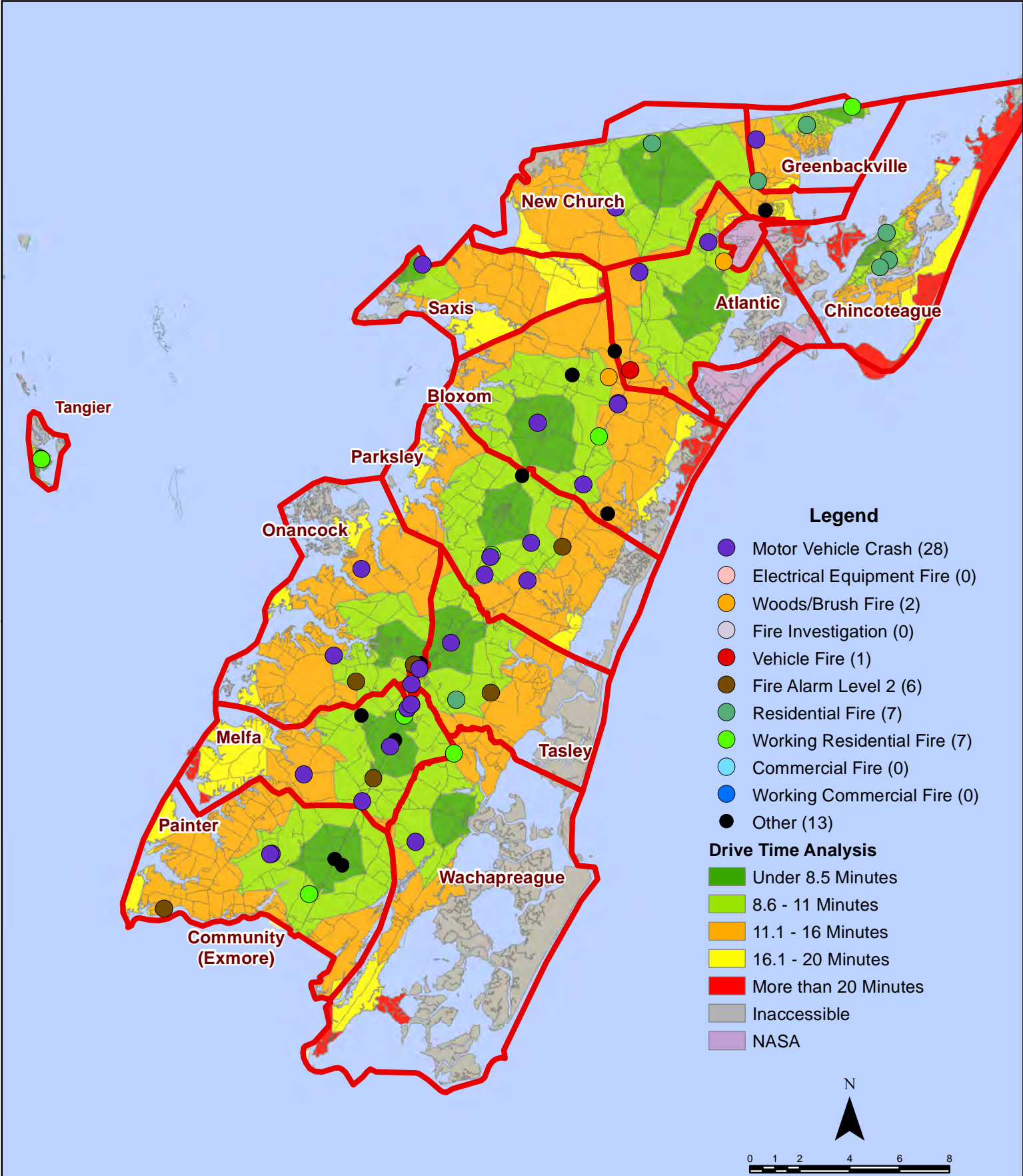
February 2019 Fire Calls By Type



All points are plotted using X and Y coordinates provided by the ESVA 911 Center. Points may be plotted over one another when they are in close proximity.

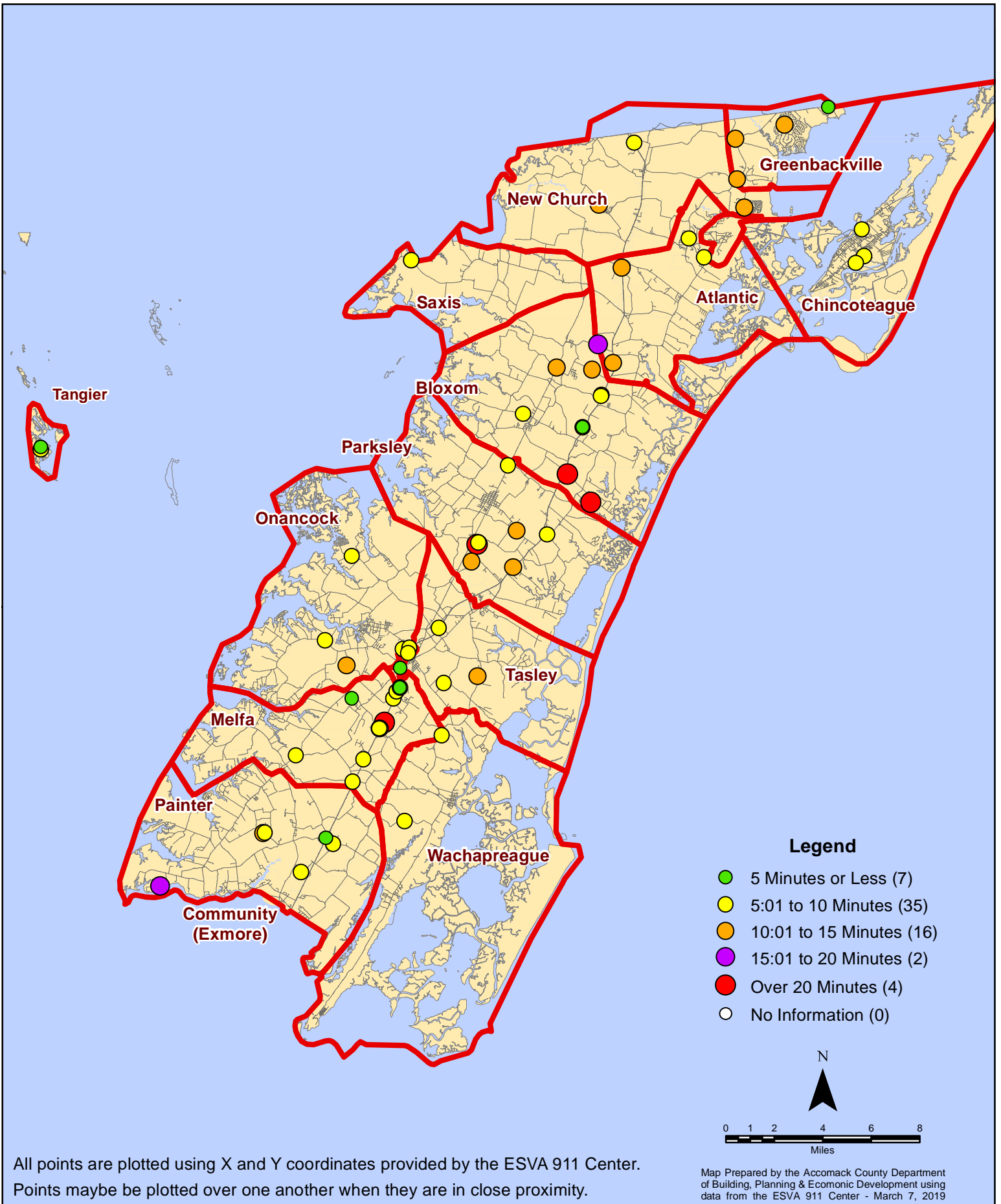
Map Prepared by the Accomack County Department of Building, Planning & Economic Development using data from the ESVA 911 Center - March 7, 2019

February 2019 Fire Calls By Type



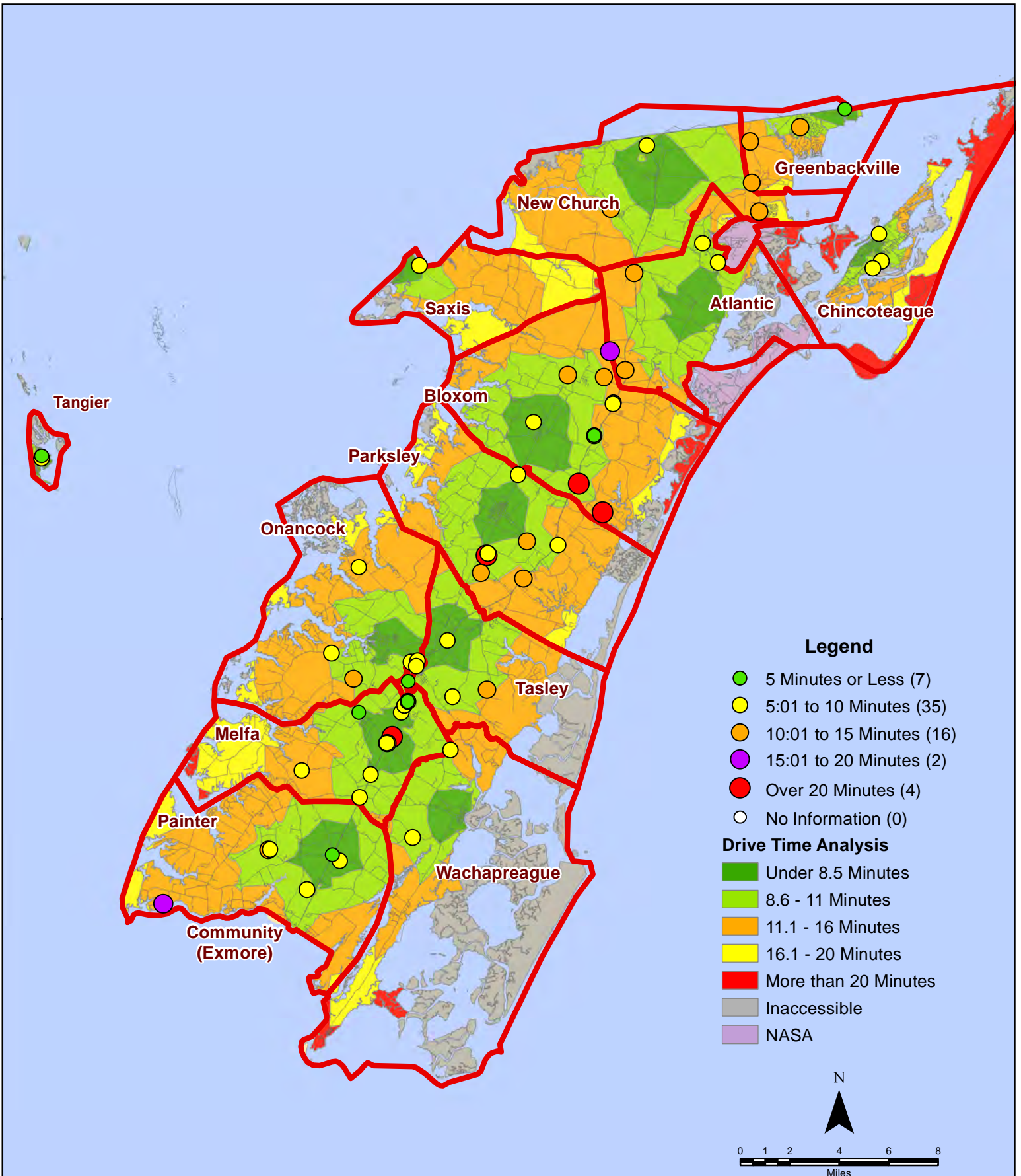
All points are plotted using X and Y coordinates provided by the ESVA 911 Center. Points may be plotted over one another when they are in close proximity.

February 2019 Fire Calls By Response Time



All points are plotted using X and Y coordinates provided by the ESVA 911 Center. Points may be plotted over one another when they are in close proximity.

February 2019 Fire Calls By Response Time



All points are plotted using X and Y coordinates provided by the ESVA 911 Center. Points may be plotted over one another when they are in close proximity.

Map Prepared by the Accomack County Department of Building, Planning & Economic Development using data from the ESVA 911 Center - March 7, 2019