

September 2019

Fire - Performance Measure Data *					
Response District	Total Calls in District	Greater than 20 min. Response Time	Calls Handled by other agency	Longest Response Time	Overall Station Benchmark %
New Church	10	0	0	0:13:28	100.0%
Greenbackville	3	1	0	0:26:58	66.7%
Chincoteague	11	0	0	0:15:25	100.0%
Atlantic	7	0	0	0:13:33	100.0%
Saxis	4	0	0	0:18:26	100.0%
Bloxom	5	0	0	0:14:36	100.0%
Parksley	10	0	1	0:13:38	100.0%
Tasley	7	0	0	0:12:27	100.0%
Onancock	8	0	0	0:15:20	100.0%
Melfa	11	0	2	0:11:39	100.0%
Wachapreague	1	0	0	0:05:35	100.0%
Painter	8	0	0	0:13:33	100.0%
Tangier	0	0	0	0	#DIV/0!
System Totals	85	1	3	0:26:58	98.8%

EMS - Performance Measure Data						
Response District	Total Calls in District	Greater than 20 min. Response Time	Longest Response Time	Calls Handled by other agency	Station Benchmark Compliance %	Overall Station Reliability %
Greenbackville	19	0	0:19:59	13	100.0%	31.6%
Chincoteague	60	0	0:18:47	1	100.0%	98.3%
Saxis	14	0	0:12:22	4	100.0%	71.4%
Bloxom	40	1	0:31:38	1	97.5%	97.5%
Parksley	75	0	0:17:29	2	100.0%	97.3%
Onancock	62	1	0:26:29	1	98.4%	98.4%
Melfa	52	0	0:14:22	2	100.0%	96.2%
Wachapreague (Painter)	37	1	0:21:35	3	97.3%	91.9%
Oak Hall	68	1	0:22:27	5	98.5%	92.6%
Tangier	11	3	0:51:07	0	72.7%	100.0%
Community (Exmore)	8	0	0:08:23	1	100.0%	87.5%
System Totals	446	7	0:51:07	33	98.4%	92.6%

	Station Giving Aid														
	Greenbackville	Chincoteague	Saxis	Bloxom	Parksley	Onancock	Melfa	Wachapreague/Painter	Oak Hall	Community (Exmore)	Northampton	Wallops	NORS	2nd Call	3rd Call
Greenbackville									13				13		
Chincoteague									1					1	
Saxis				1					3				4		
Bloxom					1									1	
Parksley				1		1								2	
Onancock							1							1	
Melfa						1							2		
Wachapreague (Painter)							2			1				3	
Oak Hall		2		3									1	3	1
Community (Exmore)								1					1		
Northampton Co.															
Wallops															
Totals	0	2	0	5	1	2	3	2	17	1	0	0	21	11	1

Hospital Destination by Unit	Riverside - Shore Memorial		
	PRMC	Other	
Greenbackville	2	4	
Chincoteague	21	19	
Saxis	7	3	
Bloxom	42	1	
Parksley	38		
Onancock	45		
Melfa	46		
Wachapreague (Painter)	22		
Oak Hall	42	12	
Wallops			
Totals	265	39	0

Benchmark = The Accomack County Board of Supervisors established a 20 minute standard for emergency response.

NORS = No Response by station or the call was handled by another station or agency.

2nd Call = 2nd ambulance call received while first ambulance was on another call.

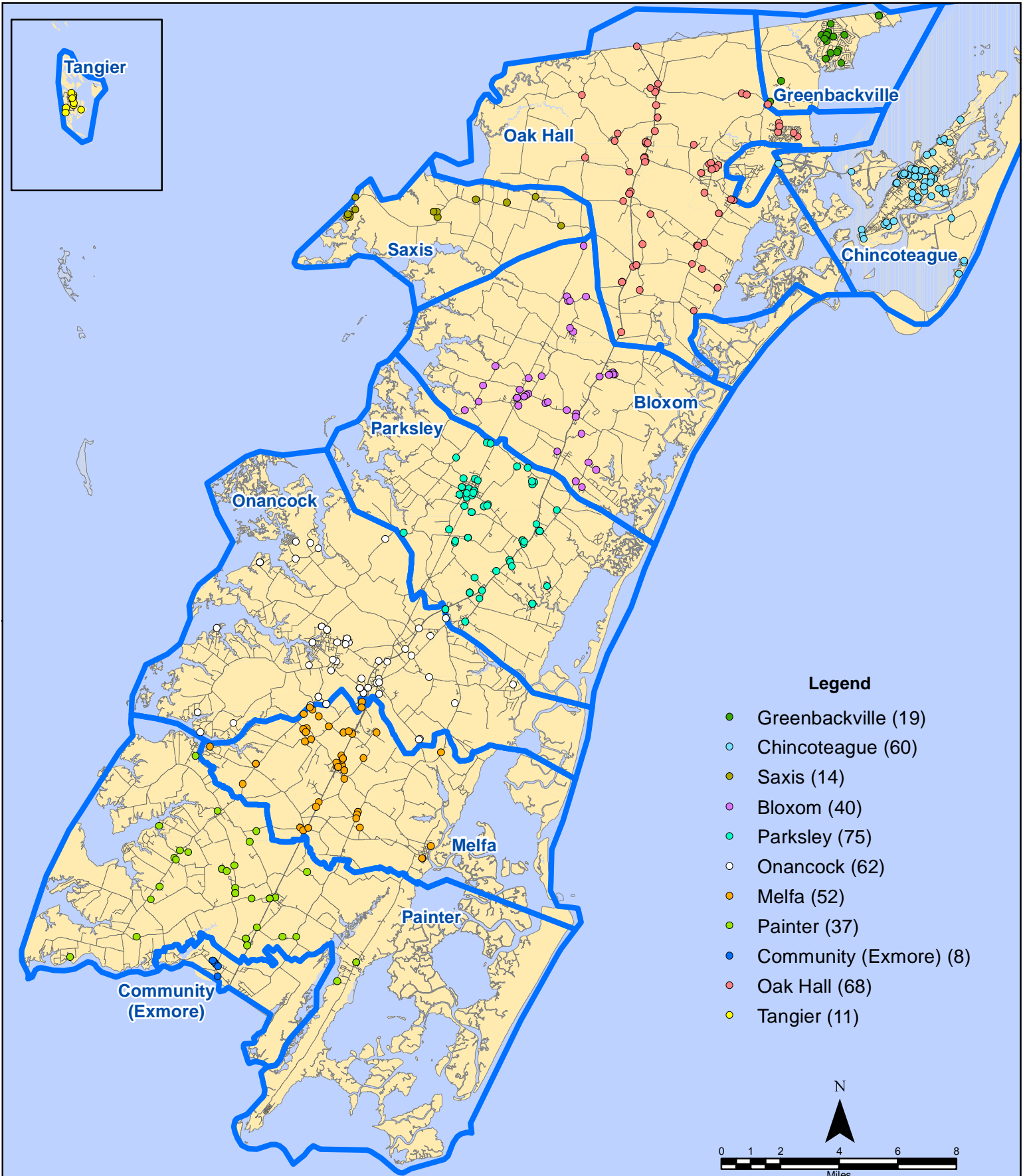
3rd Call = 3rd ambulance call received while first & second ambulances were on other calls.

* This data excludes F1 Med (Medical Assist) calls in the Fire Data.

This information was prepared using data supplied by the Eastern Shore of Virginia 911 Center. This information is original incident data only and may not be representative of all units and/or stations who responded to an incident.

Station Receiving Aid

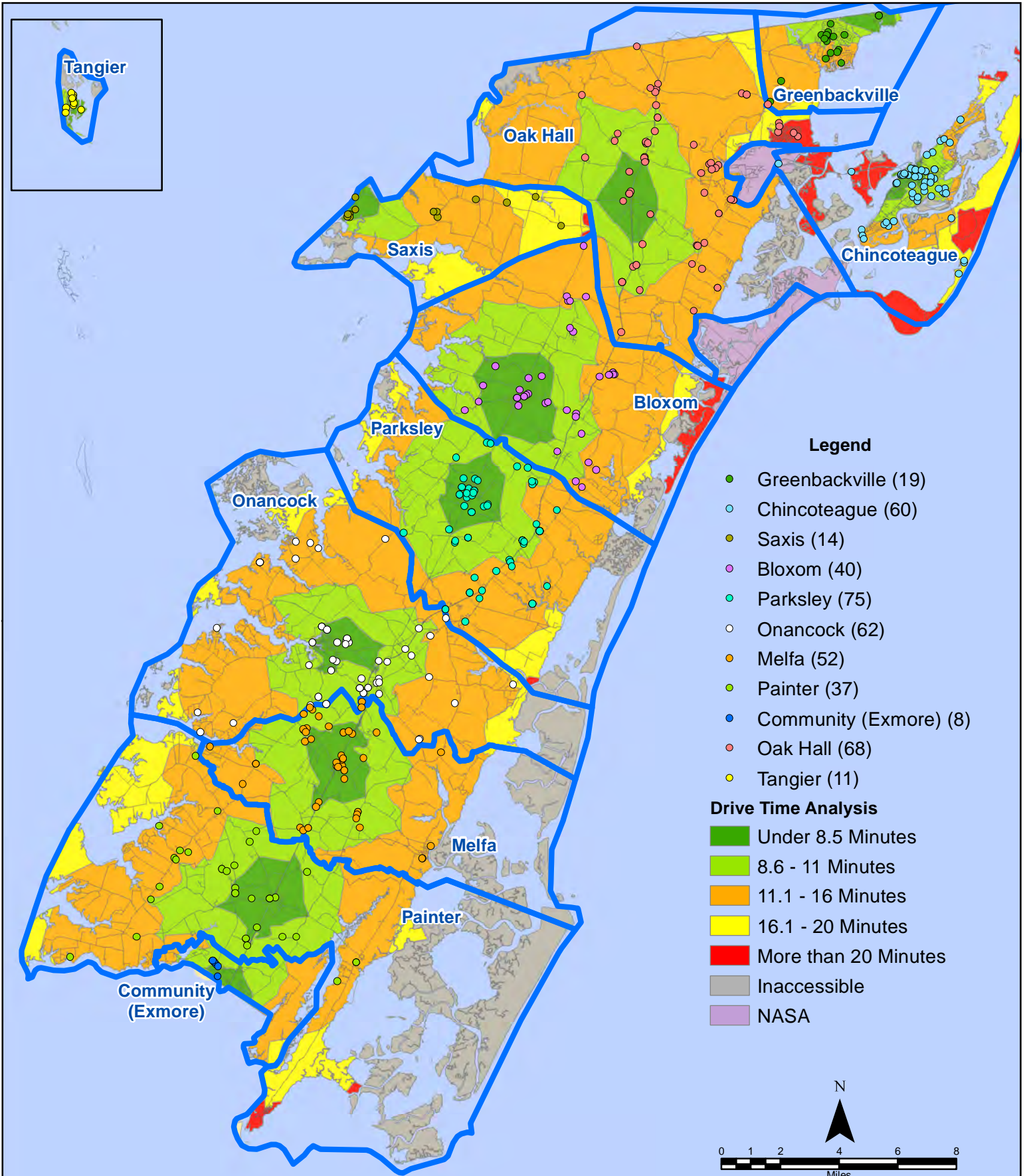
September 2019 EMS Calls By District



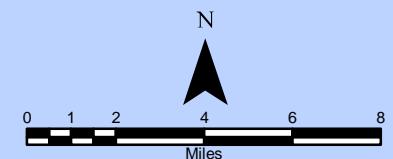
All points are plotted using X and Y coordinates provided by the ESVA 911 Center.
Points may be plotted over one another when they are in close proximity.

Map Prepared by the Accomack County Department of Building, Planning & Economic Development using data from the ESVA 911 Center - October 8, 2019

September 2019 EMS Calls By District

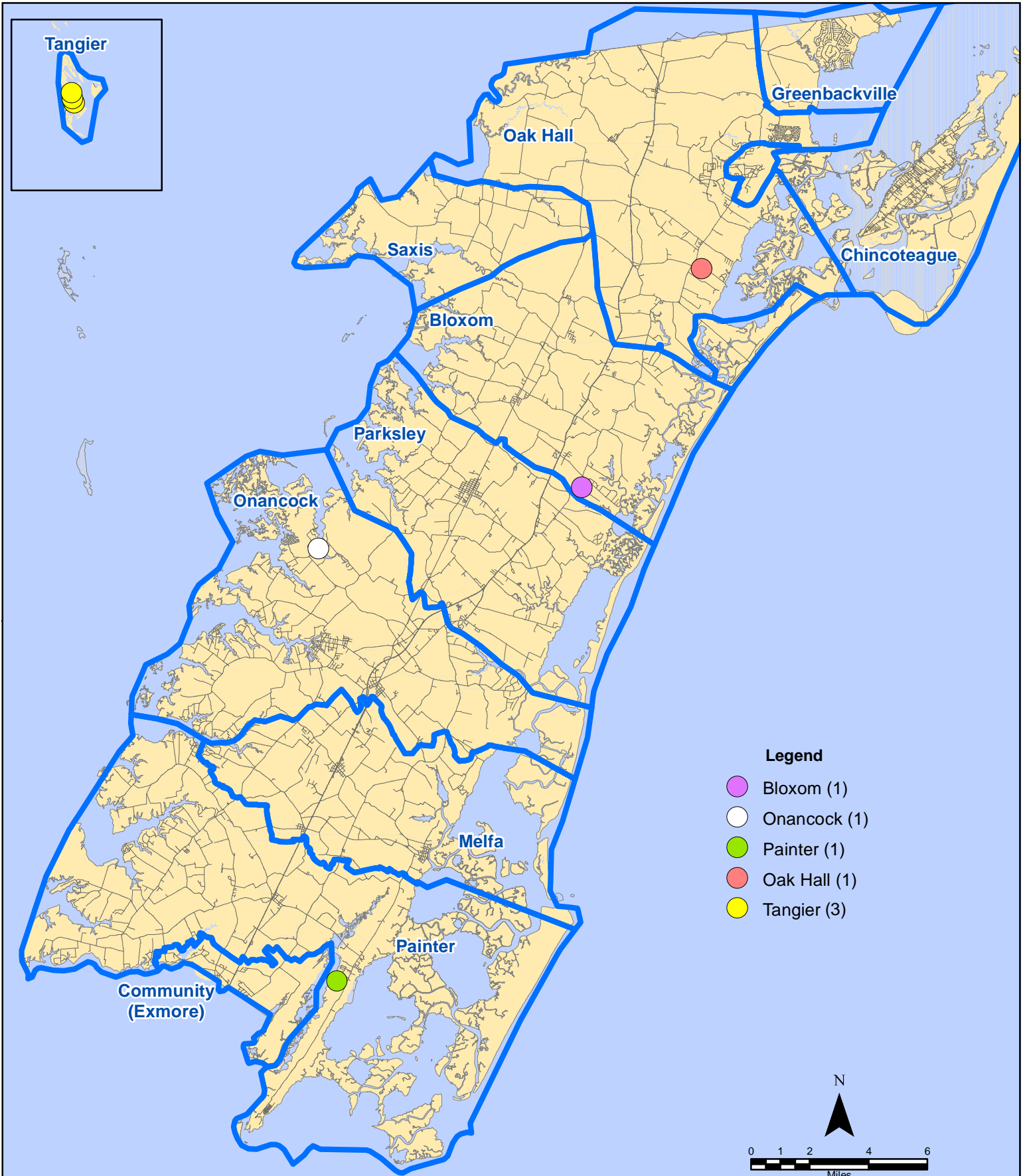


All points are plotted using X and Y coordinates provided by the ESVA 911 Center. Points may be plotted over one another when they are in close proximity.



Map Prepared by the Accomack County Department of Building, Planning & Economic Development using data from the ESVA 911 Center - October 8, 2019

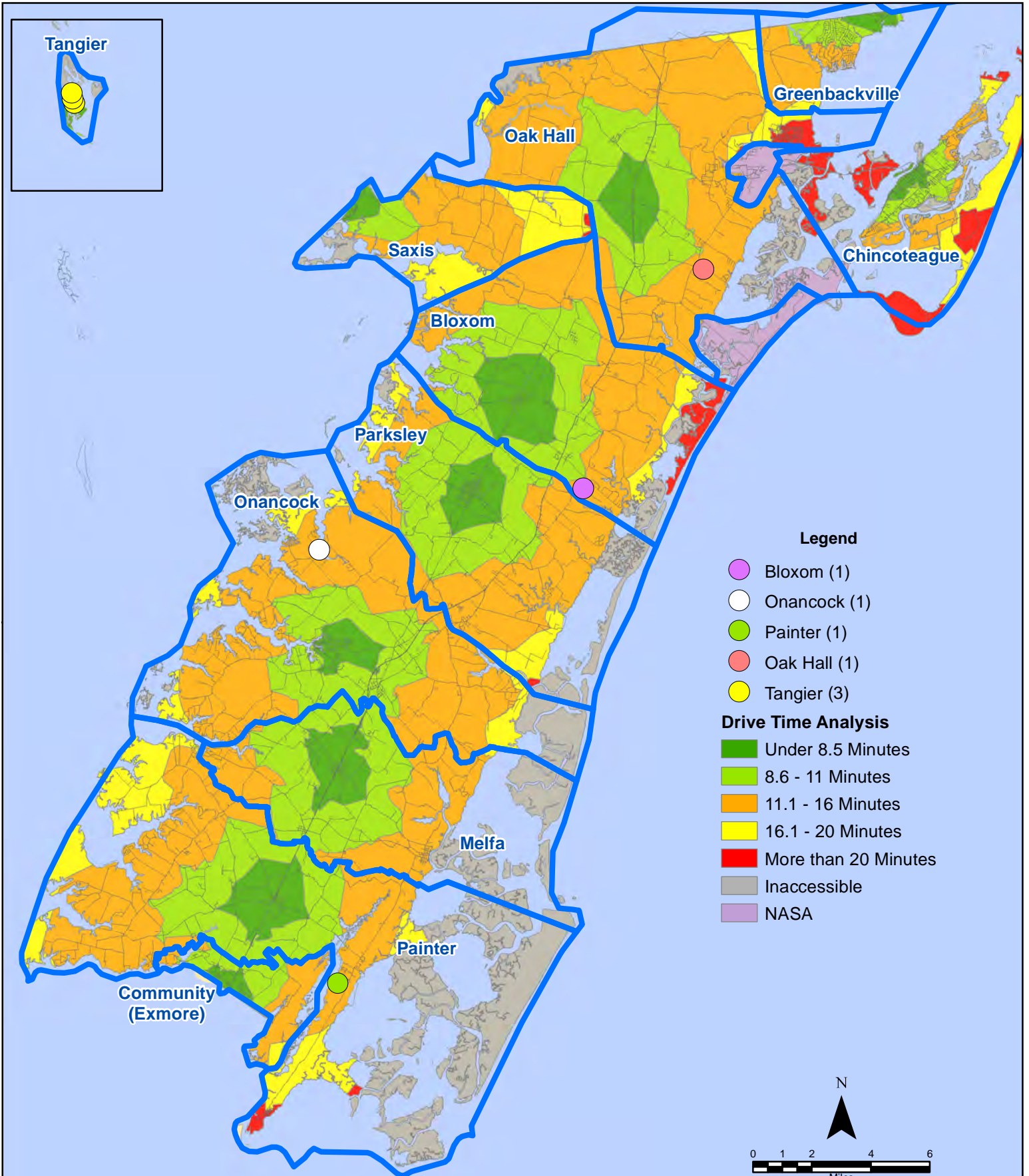
September 2019 EMS Calls With Response Time Greater Than 20 Mins.



All points are plotted using X and Y coordinates provided by the ESVA 911 Center.
Points may be plotted over one another when they are in close proximity.

Map Prepared by the Accomack County Department of Building, Planning & Economic Development using data from the ESVA 911 Center - October 8, 2019

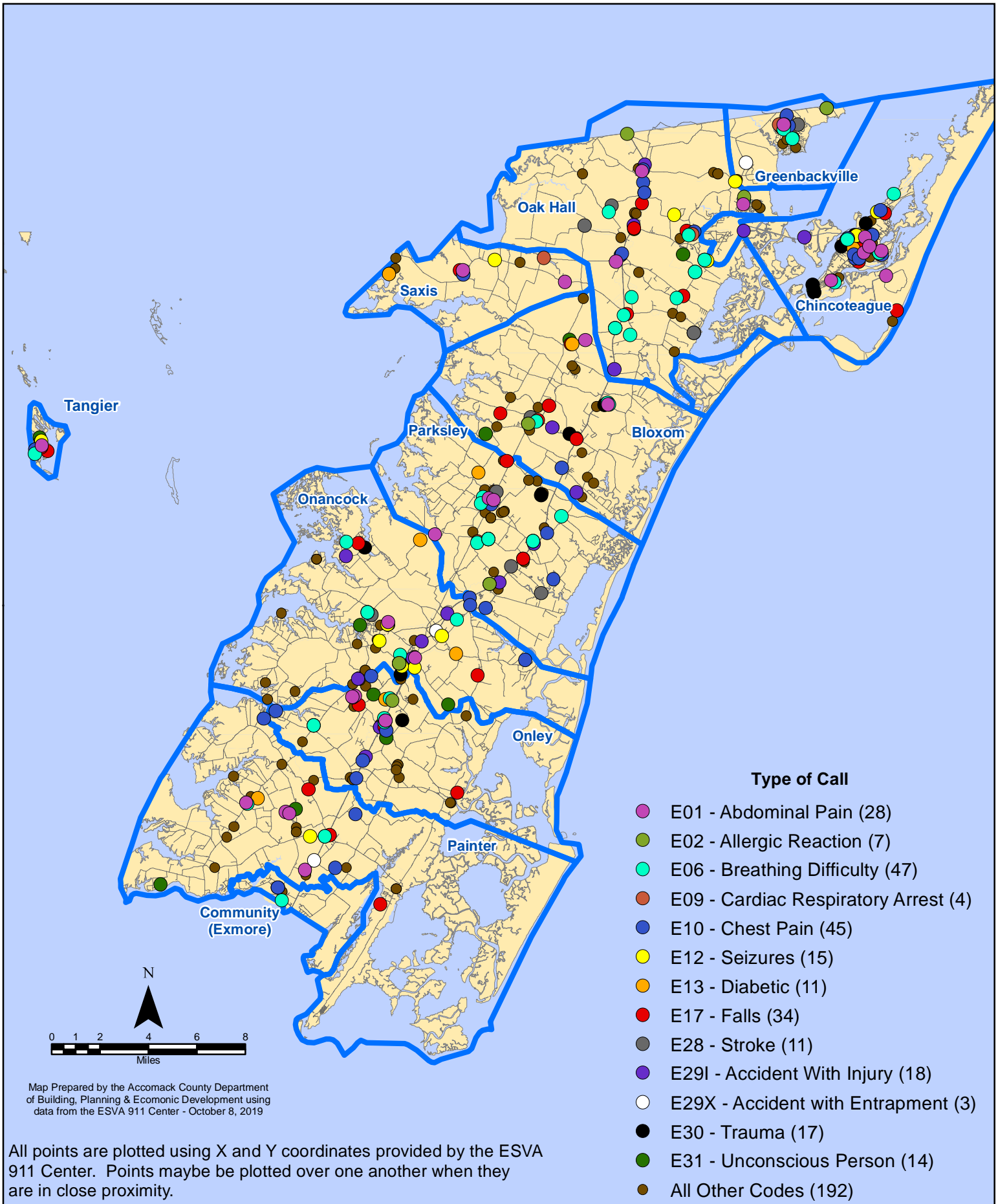
September 2019 EMS Calls With Response Time Greater Than 20 Mins.



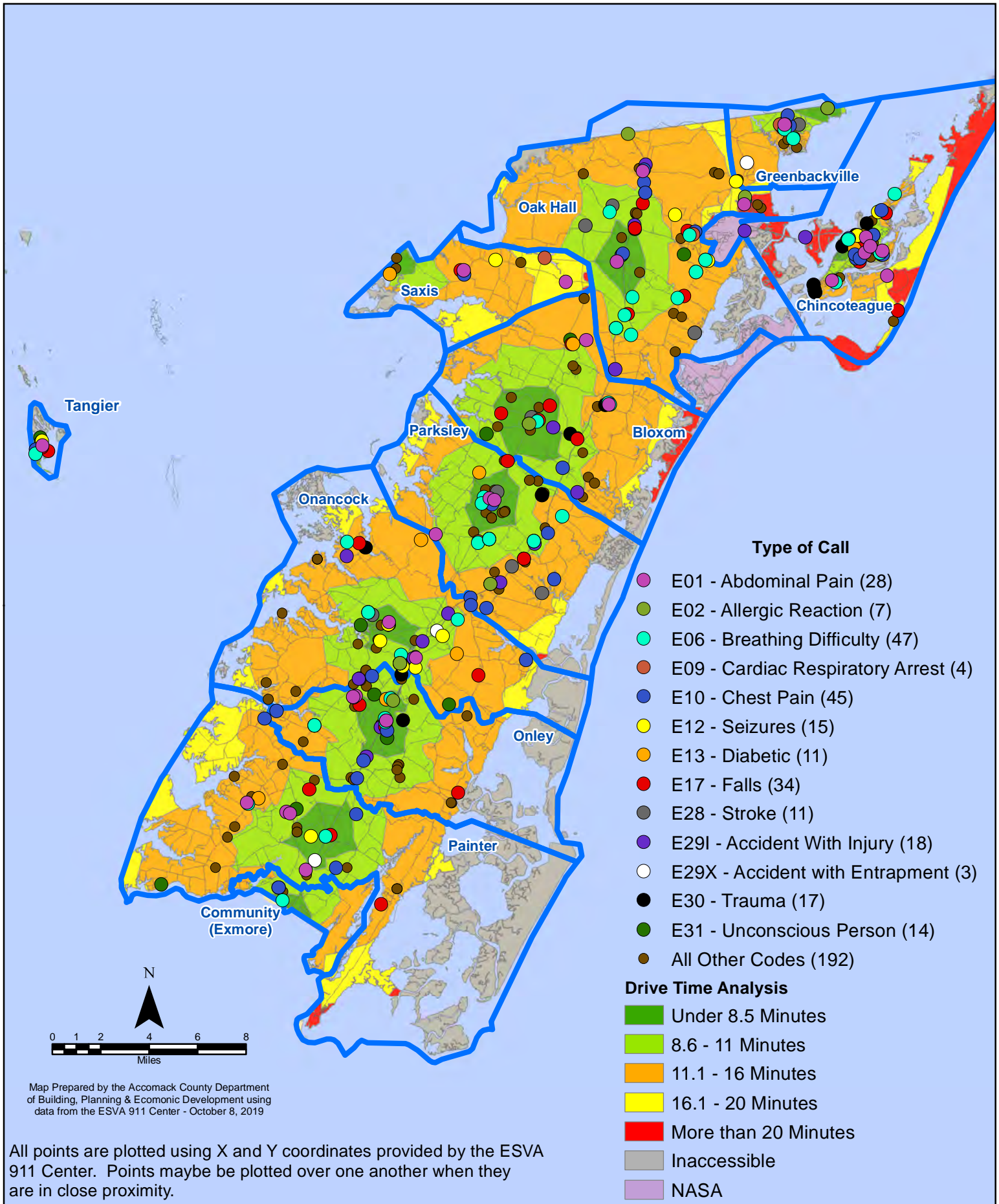
All points are plotted using X and Y coordinates provided by the ESVA 911 Center. Points may be plotted over one another when they are in close proximity.

Map Prepared by the Accomack County Department of Building, Planning & Economic Development using data from the ESVA 911 Center - October 8, 2019

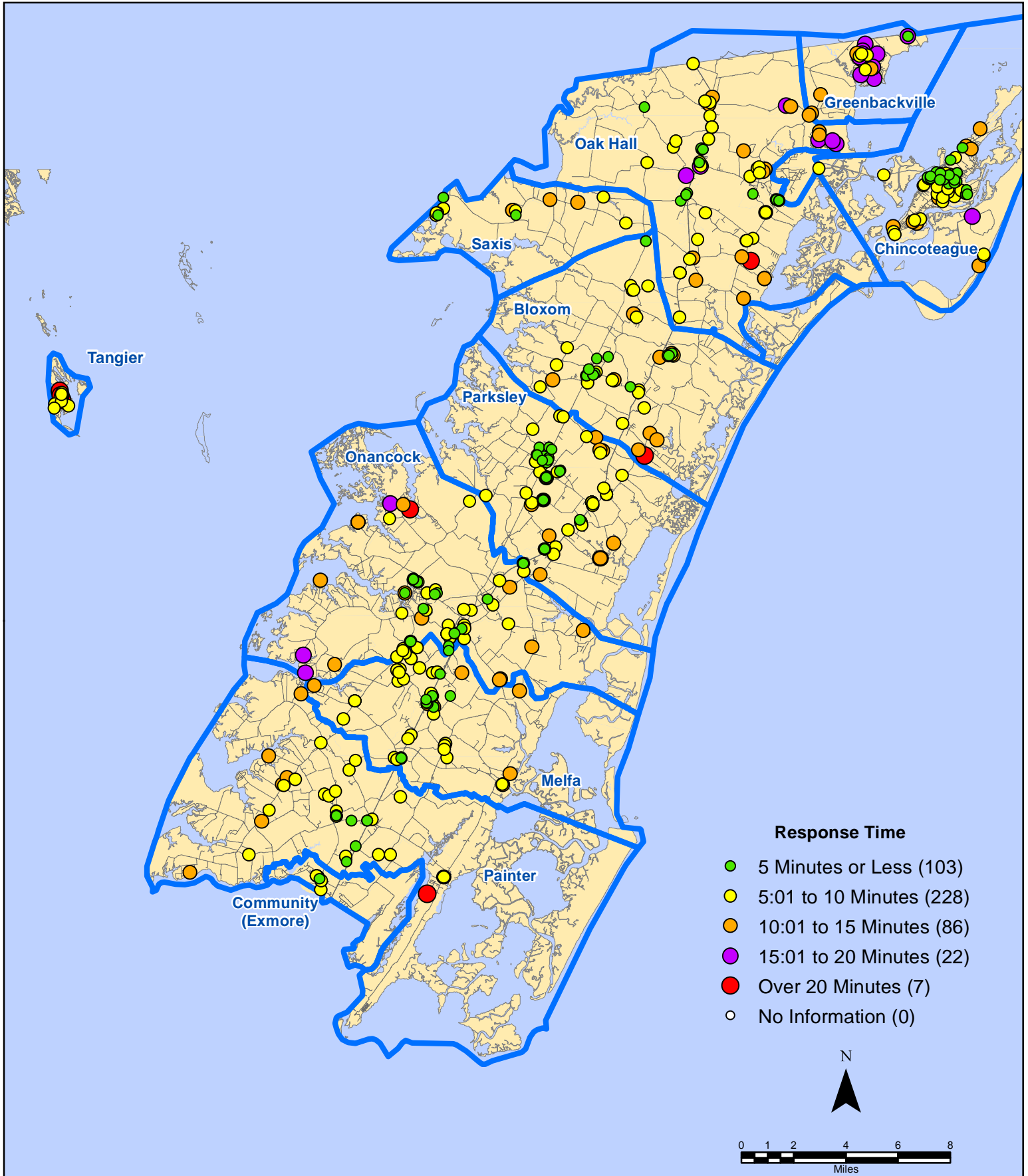
September 2019 EMS Calls By Type



September 2019 EMS Calls By Type



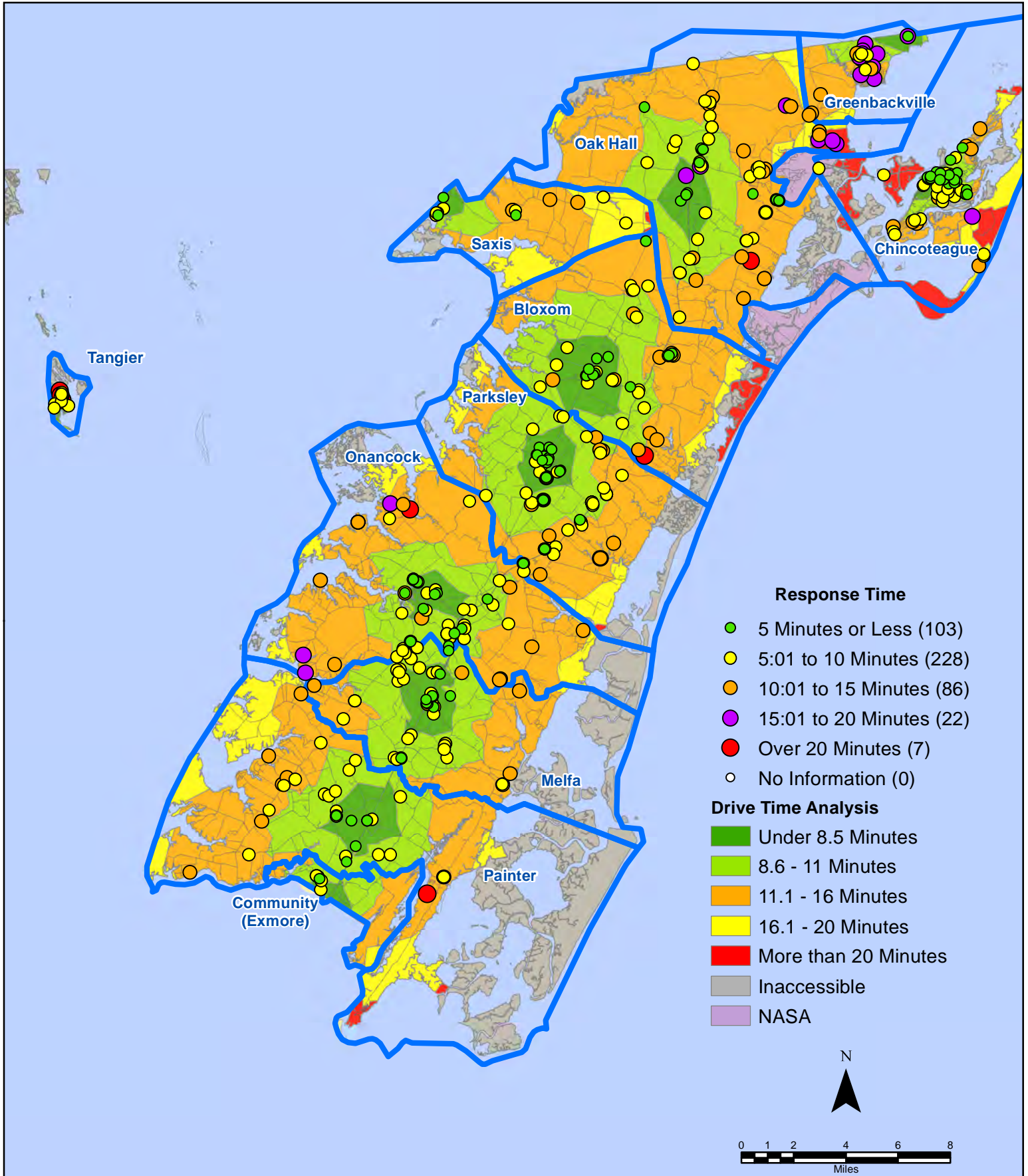
September 2019 EMS Calls By Response Time



All points are plotted using X and Y coordinates provided by the ESVA 911 Center.
Points may be plotted over one another when they are in close proximity.

Map Prepared by the Accomack County Department of Building, Planning & Economic Development using data from the ESVA 911 Center - October 8, 2019

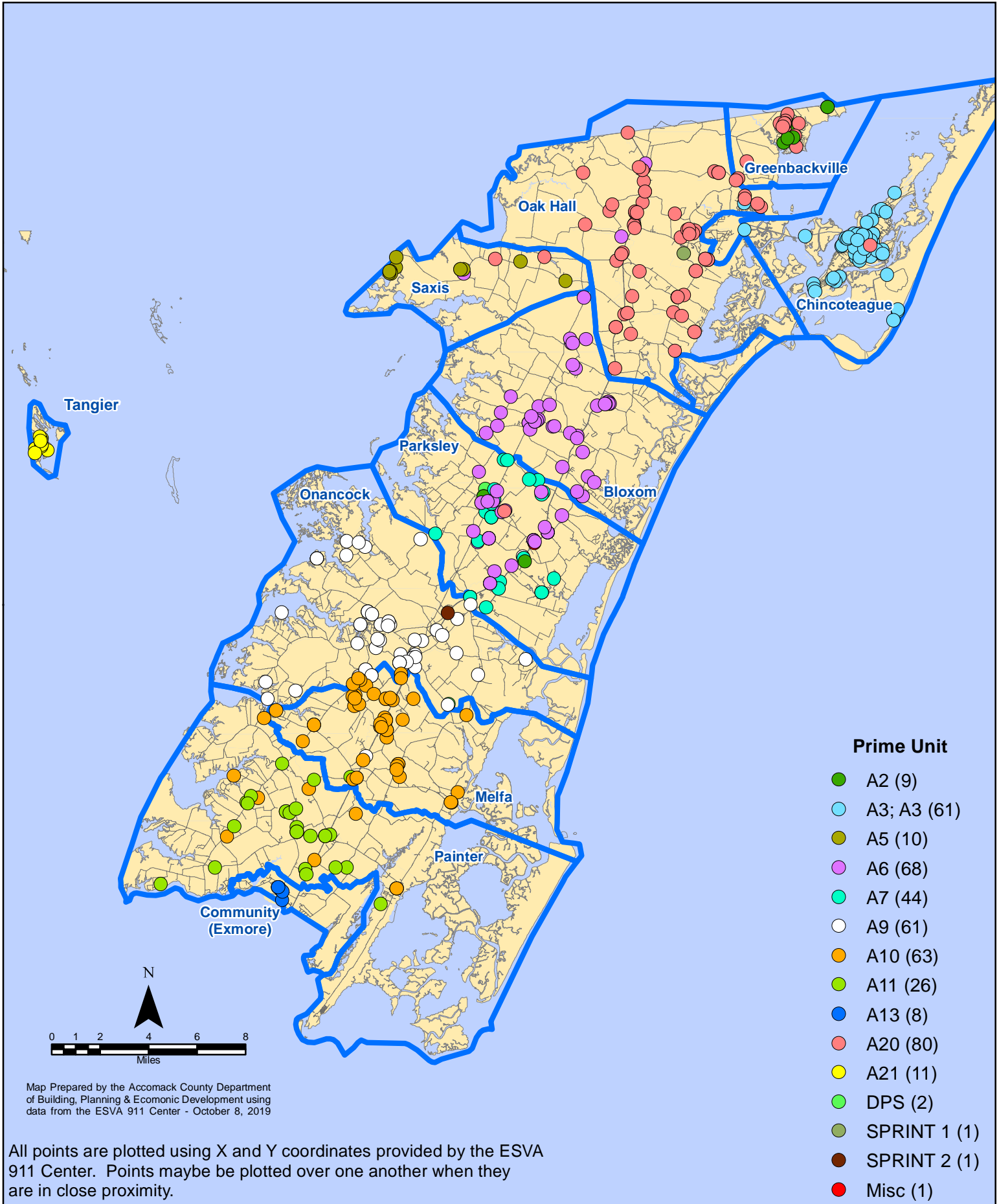
September 2019 EMS Calls By Response Time



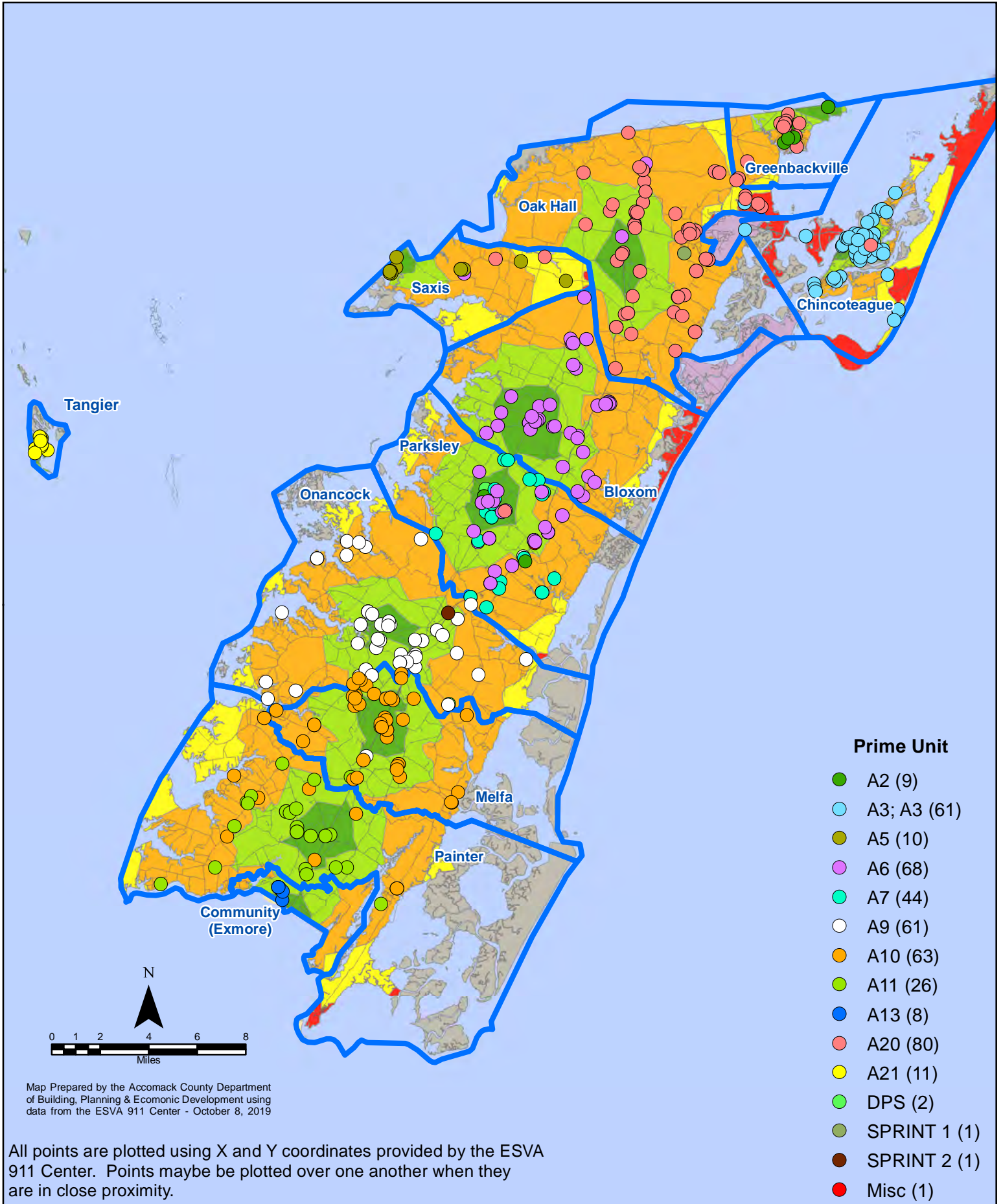
All points are plotted using X and Y coordinates provided by the ESVA 911 Center. Points may be plotted over one another when they are in close proximity.

Map Prepared by the Accomack County Department of Building, Planning & Economic Development using data from the ESVA 911 Center - October 8, 2019

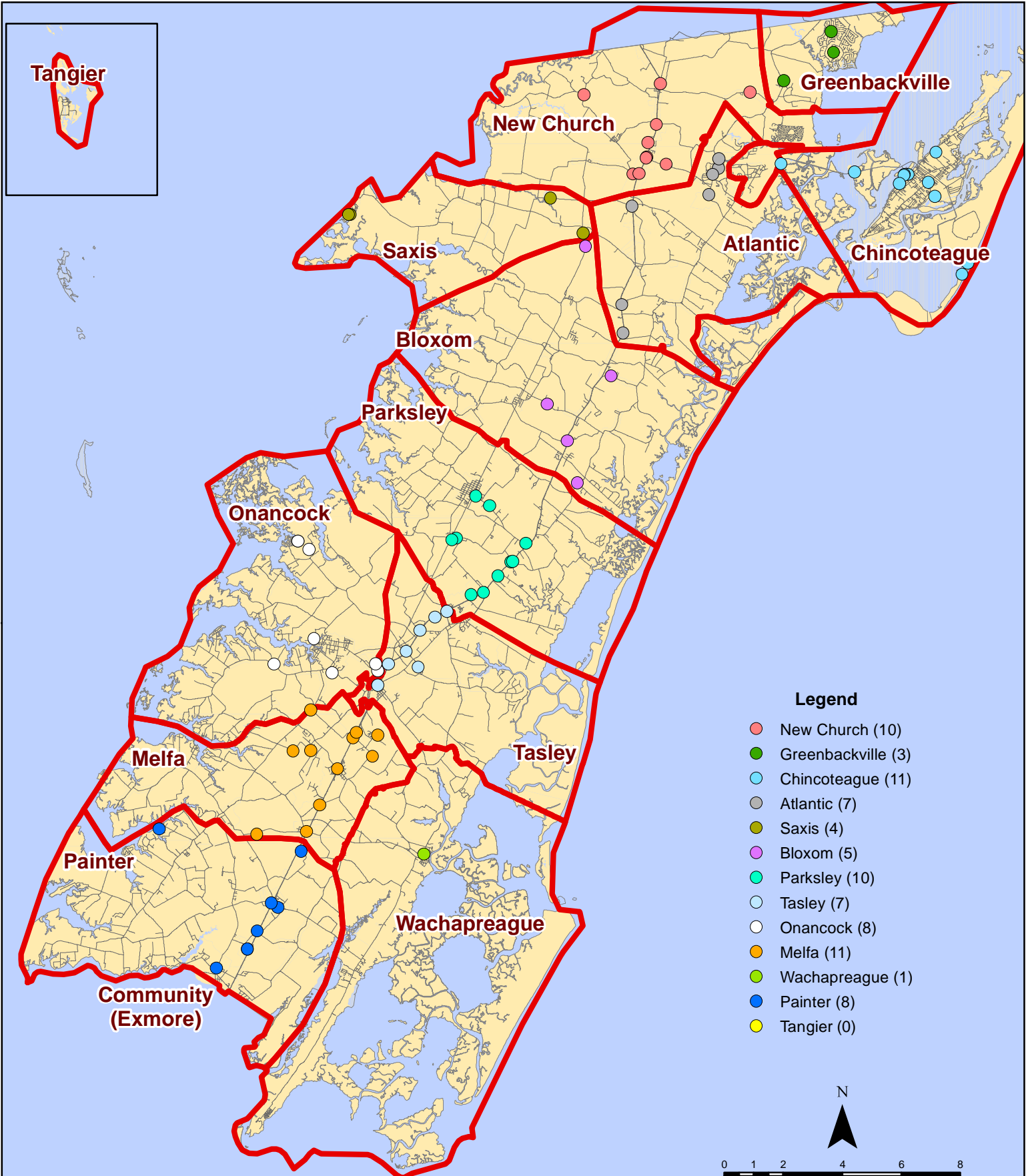
September 2019 EMS Calls By Prime Unit



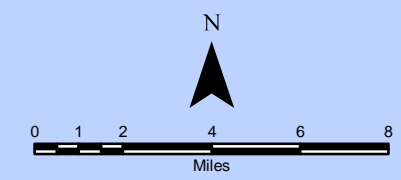
September 2019 EMS Calls By Prime Unit



September 2019 Fire Calls By District

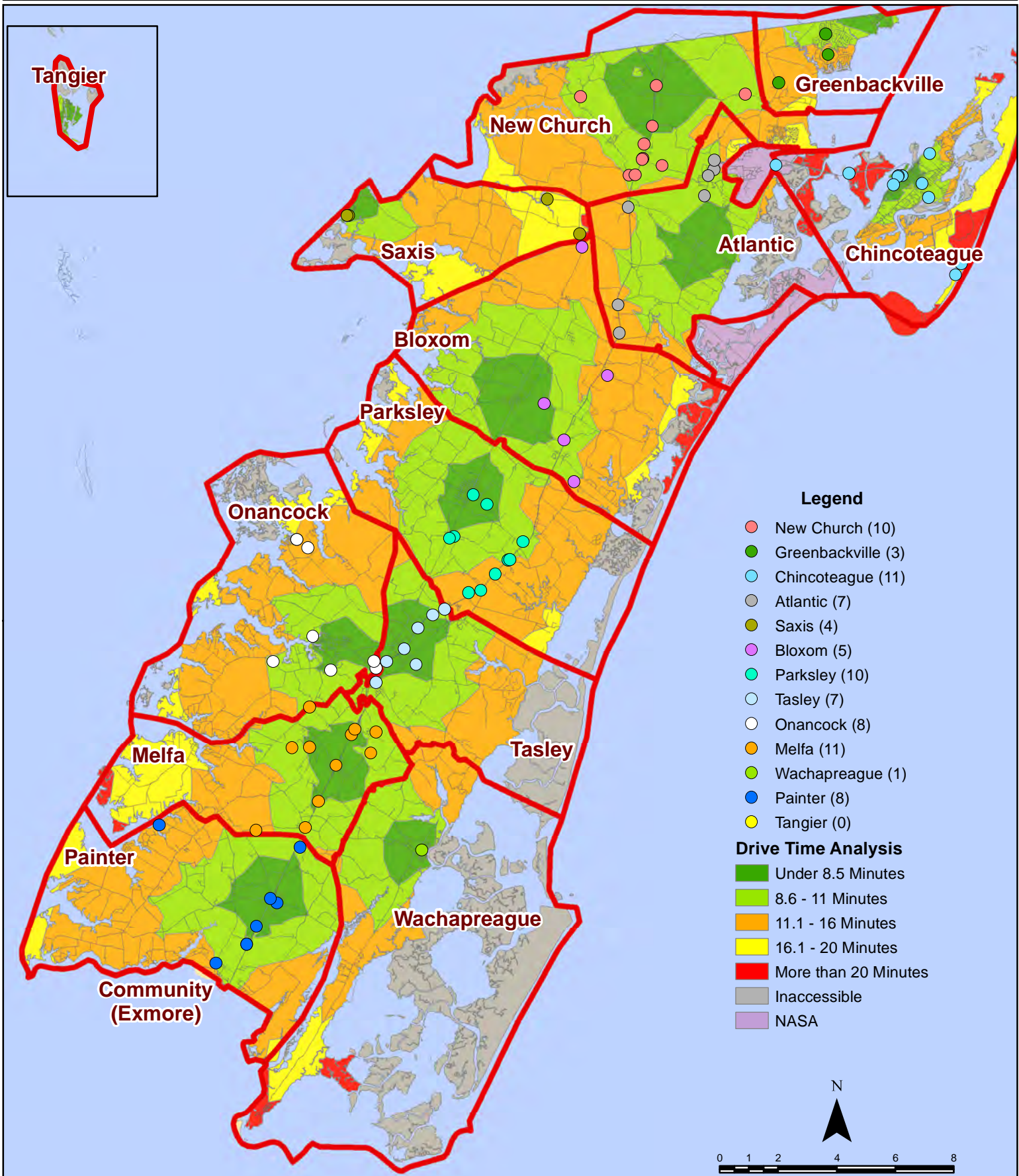


All points are plotted using X and Y coordinates provided by the ESVA 911 Center. Points may be plotted over one another when they are in close proximity.



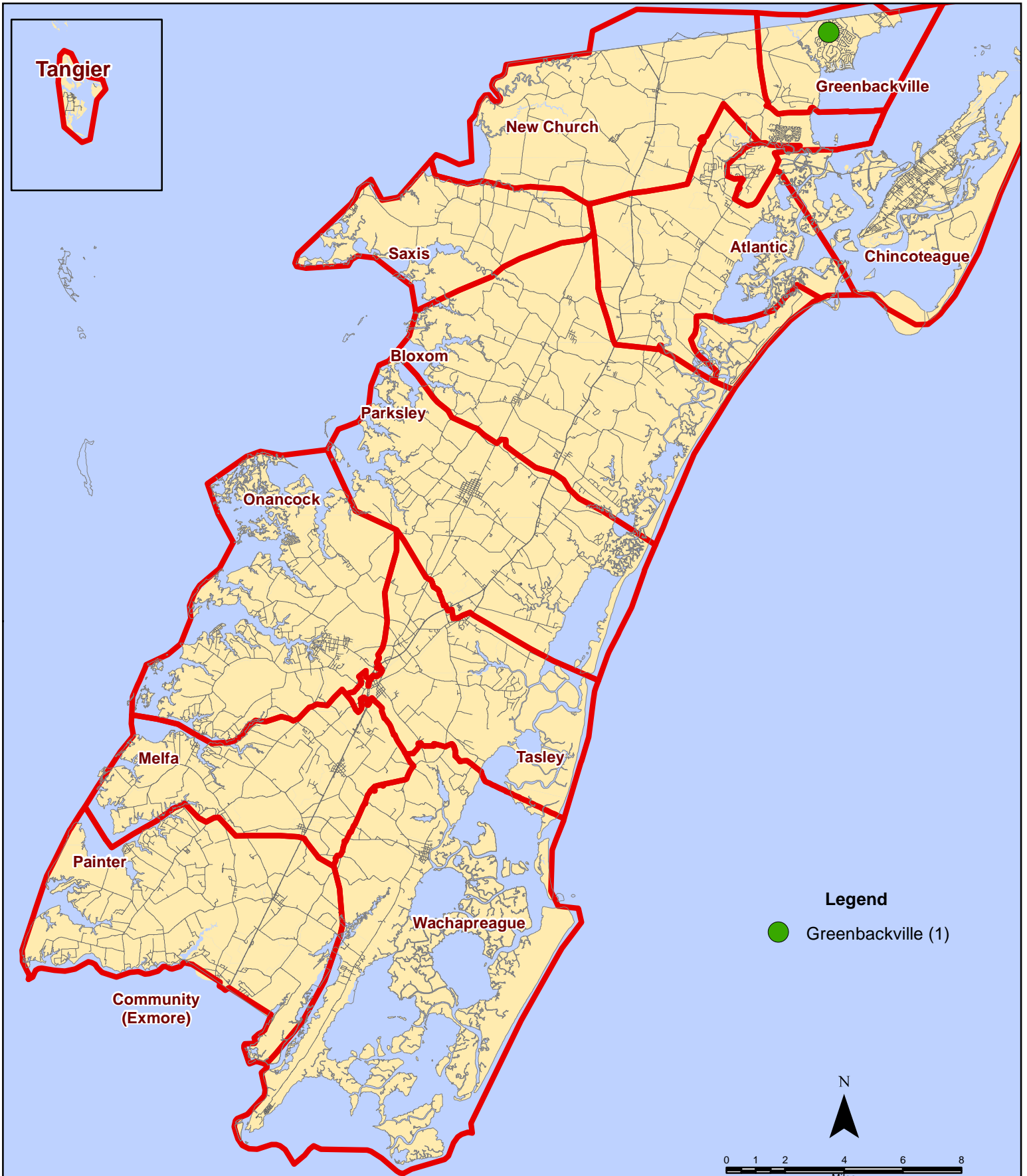
Map Prepared by the Accomack County Department of Building, Planning & Economic Development using data from the ESVA 911 Center - October 8, 2019

September 2019 Fire Calls By District



All points are plotted using X and Y coordinates provided by the ESVA 911 Center. Points maybe be plotted over one another when they are in close proximity.

September 2019 Fire Calls With Response Time Greater Than 20 Mins.

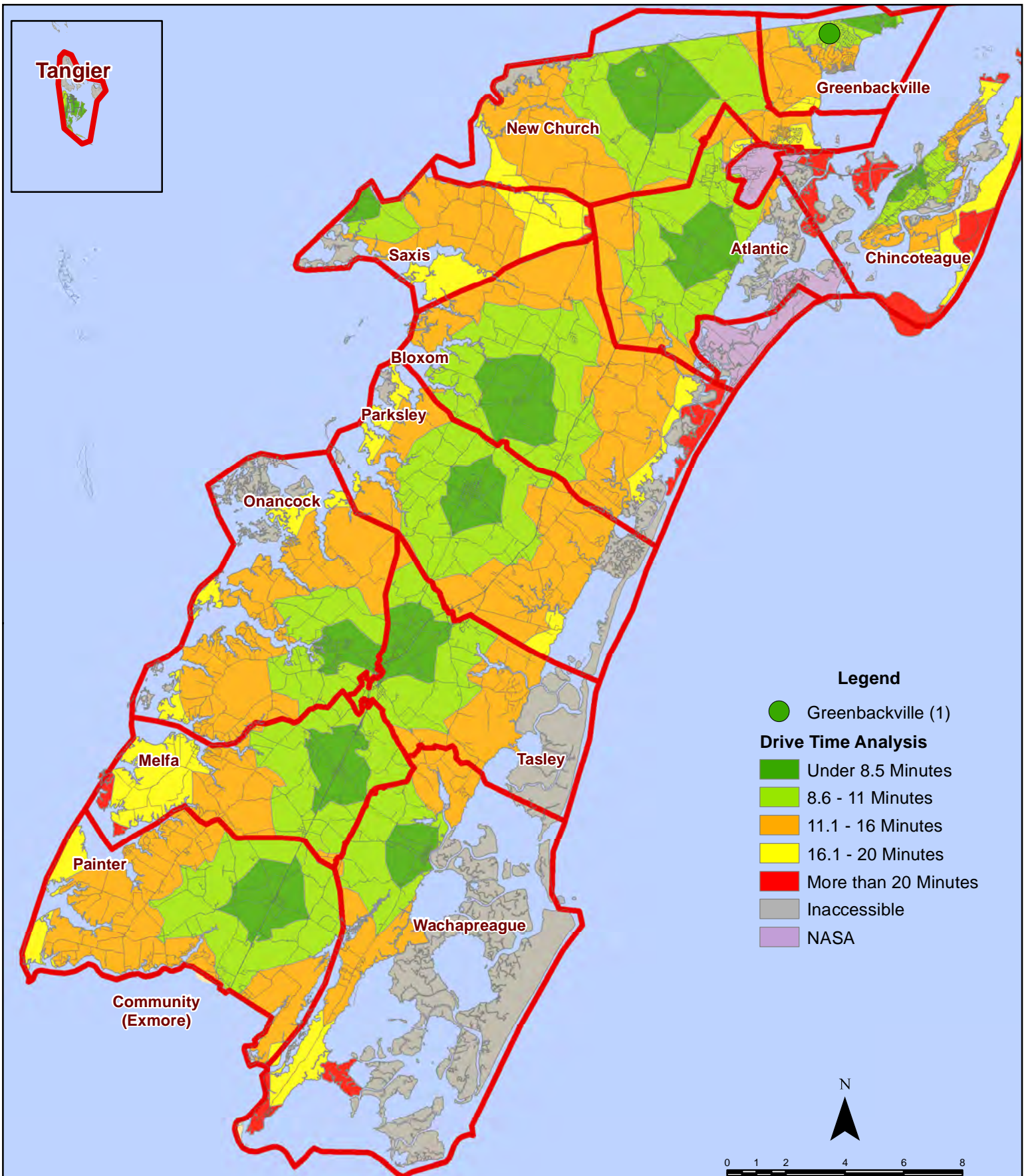


All points are plotted using X and Y coordinates provided by the ESVA 911 Center. Points may be plotted over one another when they are in close proximity.



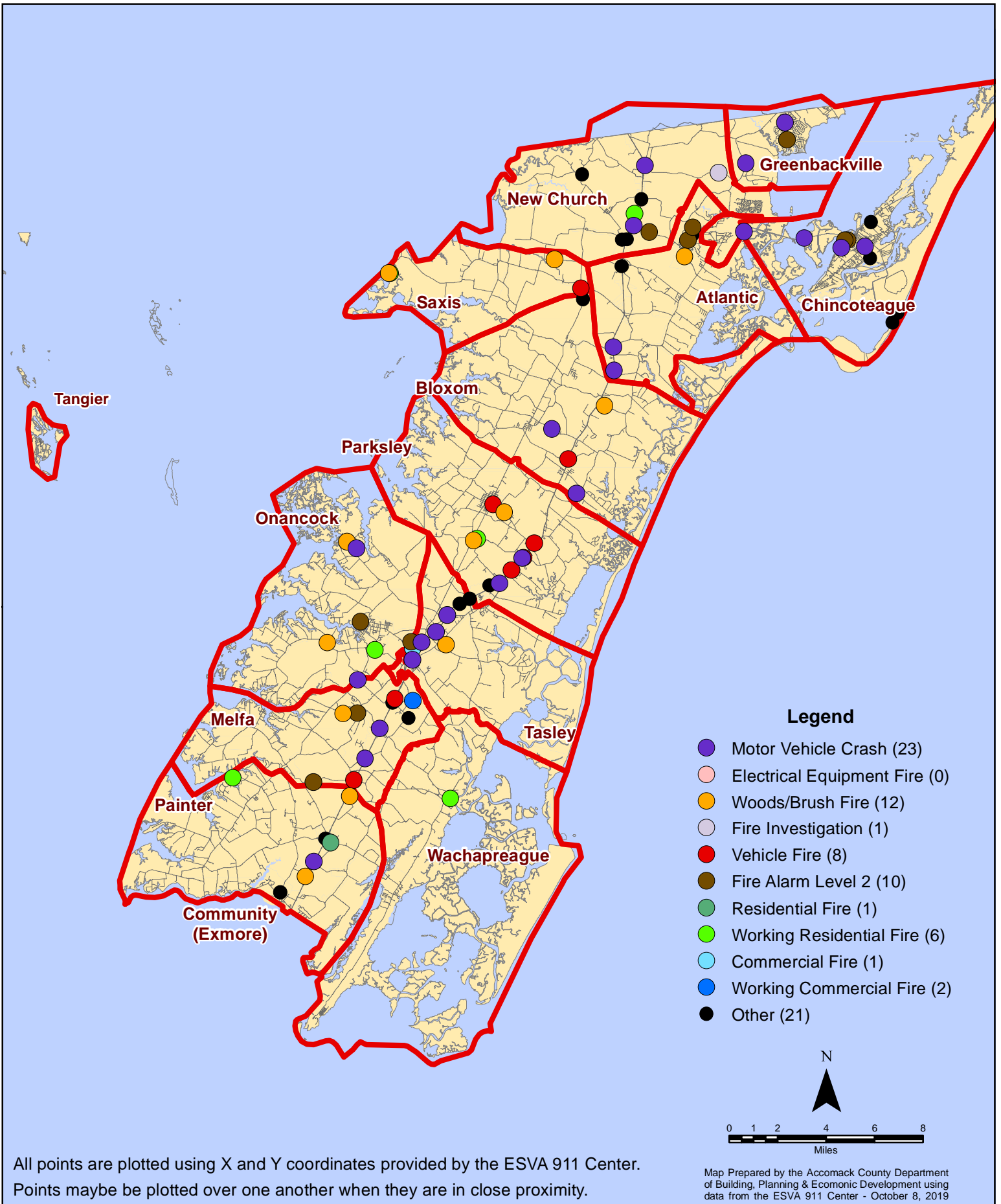
Map Prepared by the Accomack County Department of Building, Planning & Economic Development using data from the ESVA 911 Center - October 8, 2019

September 2019 Fire Calls With Response Time Greater Than 20 Mins.



All points are plotted using X and Y coordinates provided by the ESVA 911 Center. Points may be plotted over one another when they are in close proximity.

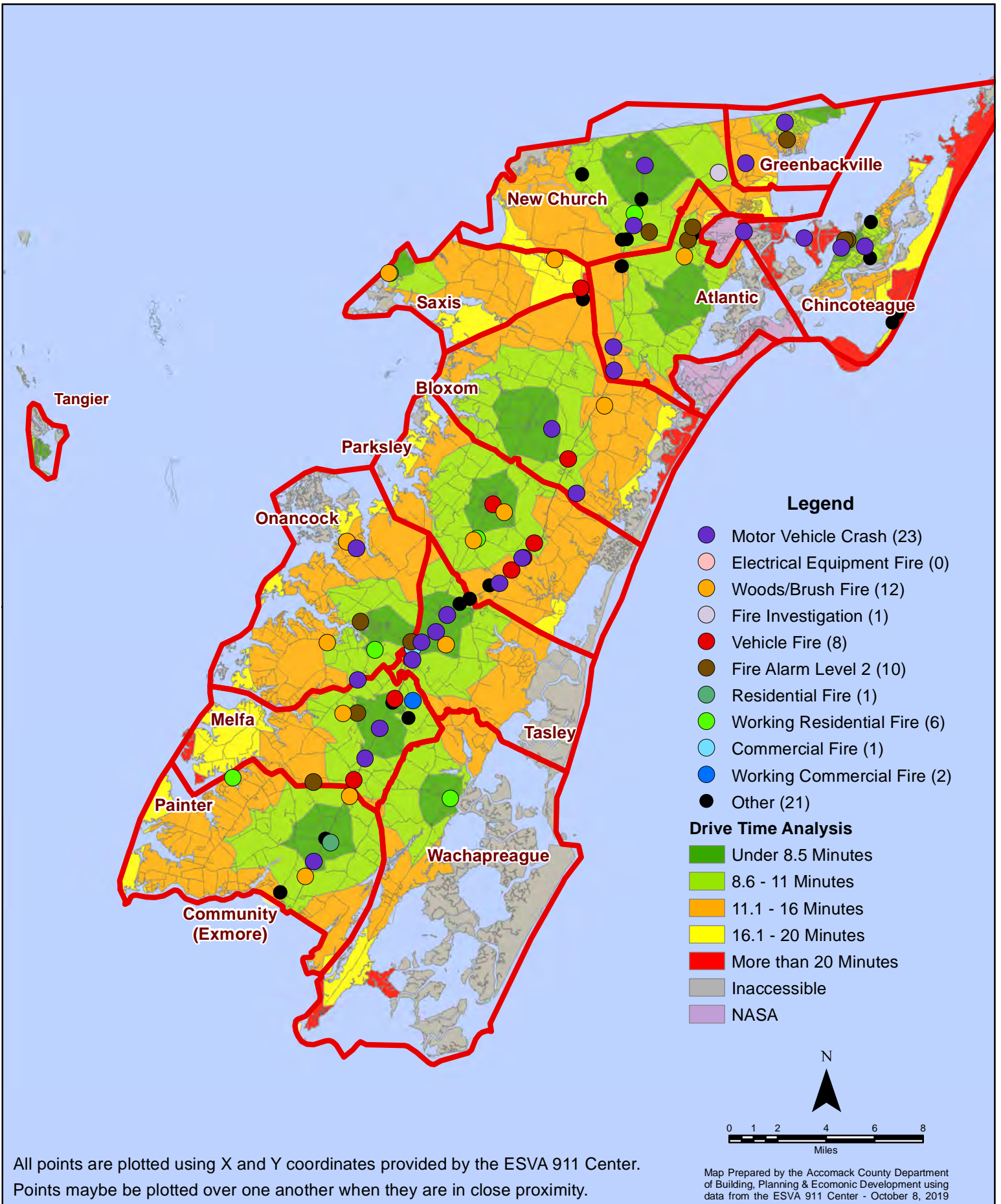
September 2019 Fire Calls By Type



All points are plotted using X and Y coordinates provided by the ESVA 911 Center. Points may be plotted over one another when they are in close proximity.

Map Prepared by the Accomack County Department of Building, Planning & Economic Development using data from the ESVA 911 Center - October 8, 2019

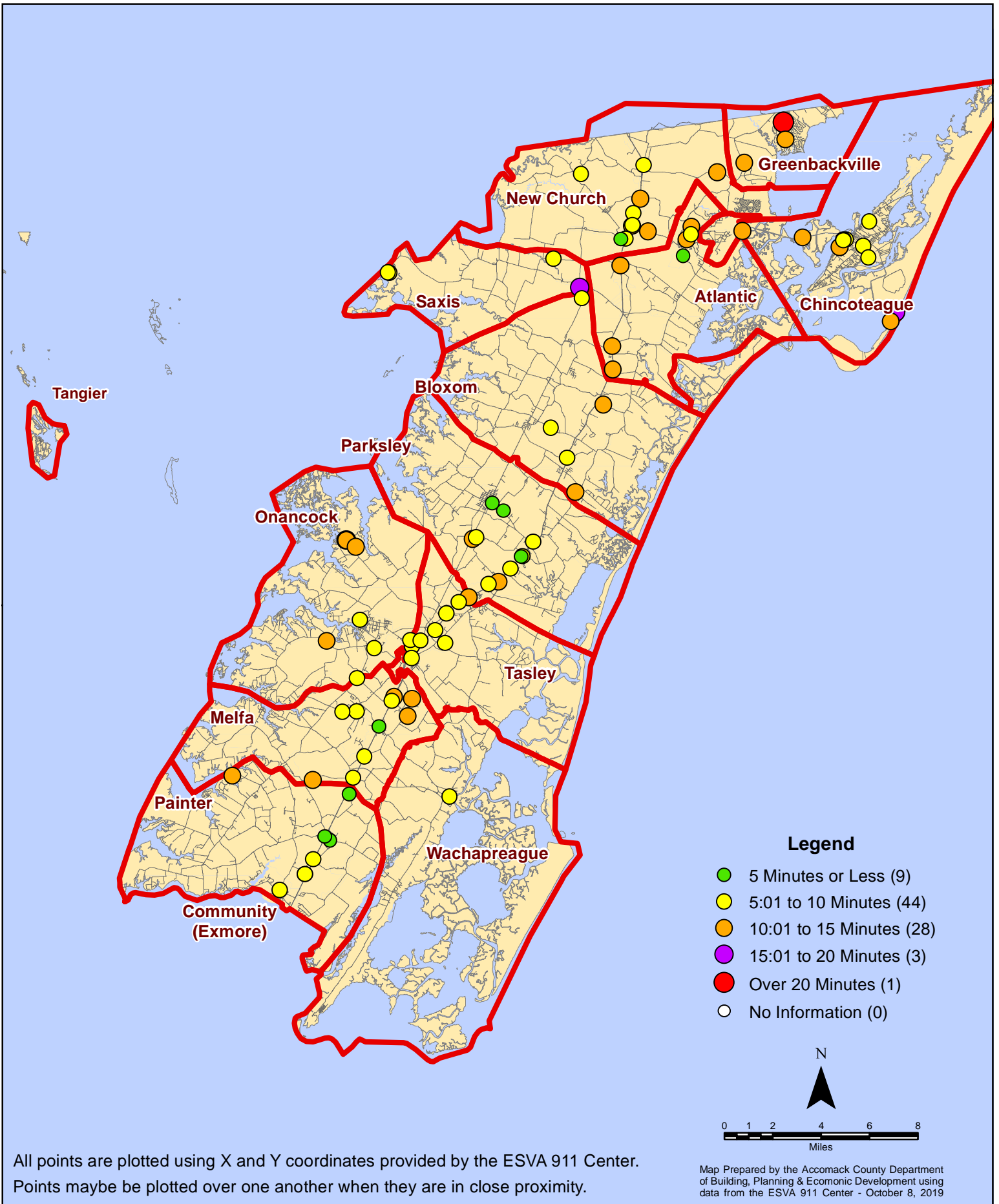
September 2019 Fire Calls By Type



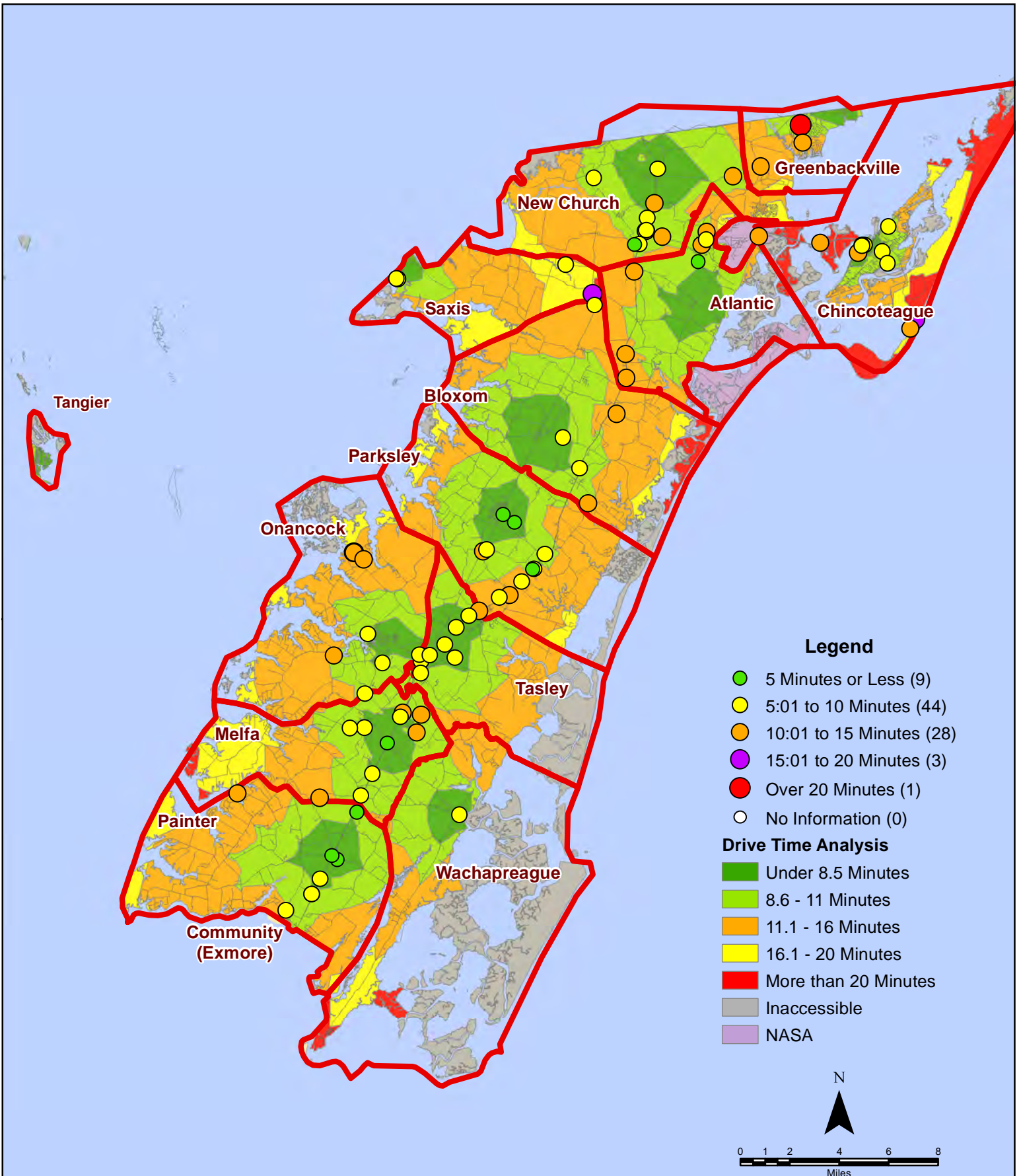
All points are plotted using X and Y coordinates provided by the ESVA 911 Center. Points may be plotted over one another when they are in close proximity.

Map Prepared by the Accomack County Department of Building, Planning & Economic Development using data from the ESVA 911 Center - October 8, 2019

September 2019 Fire Calls By Response Time



September 2019 Fire Calls By Response Time



All points are plotted using X and Y coordinates provided by the ESVA 911 Center. Points may be plotted over one another when they are in close proximity.

Map Prepared by the Accomack County Department of Building, Planning & Economic Development using data from the ESVA 911 Center - October 8, 2019