

# October 2019

Fire - Performance Measure Data *					
Response District	Total Calls in District	Greater than 20 min. Response Time	Calls Handled by other agency	Longest Response Time	Overall Station Benchmark %
New Church	7	0	0	0:15:28	100.0%
Greenbackville	2	0	0	0:13:01	100.0%
Chincoteague	8	0	0	0:10:51	100.0%
Atlantic	8	0	0	0:15:43	100.0%
Saxis	5	1	0	0:22:08	80.0%
Bloxom	5	0	0	0:15:23	100.0%
Parksley	13	0	0	0:14:21	100.0%
Tasley	11	0	2	0:15:52	100.0%
Onancock	7	0	0	0:14:48	100.0%
Melfa	8	0	3	0:16:12	100.0%
Wachapreague	3	0	0	0:19:30	100.0%
Painter	10	0	0	0:12:23	100.0%
Tangier	1	0	0	0:11:23	100.0%
<b>System Totals</b>	<b>88</b>	<b>1</b>	<b>5</b>	<b>0:22:08</b>	<b>98.9%</b>

EMS - Performance Measure Data						
Response District	Total Calls in District	Greater than 20 min. Response Time	Longest Response Time	Calls Handled by other agency	Station Benchmark Compliance %	Overall Station Reliability %
Greenbackville	14	0	0:19:33	10	100.0%	28.6%
Chincoteague	63	0	0:19:58	1	100.0%	98.4%
Saxis	10	0	0:14:37	2	100.0%	80.0%
Bloxom	45	0	0:17:24	3	100.0%	93.3%
Parksley	79	2	0:46:44	6	97.5%	92.4%
Onancock	75	0	0:16:29	4	100.0%	94.7%
Melfa	43	0	0:14:54	0	100.0%	100.0%
Wachapreague (Painter)	39	0	0:16:34	1	100.0%	97.4%
Oak Hall	71	2	0:38:29	3	97.2%	95.8%
Tangier	14	0	0:13:29	0	100.0%	100.0%
Community (Exmore)	9	0	0:18:19	2	100.0%	77.8%
<b>System Totals</b>	<b>462</b>	<b>4</b>	<b>0:46:44</b>	<b>32</b>	<b>99.1%</b>	<b>93.1%</b>

	Station Giving Aid														
	Greenbackville	Chincoteague	Saxis	Bloxom	Parksley	Onancock	Melfa	Wachapreague/Painter	Oak Hall	Community (Exmore)	Northampton	Wallops	NORS	2nd Call	3rd Call
Greenbackville									10					10	
Chincoteague									1					1	
Saxis									2				2		
Bloxom					2				1				1	2	
Parksley				5		1							1	5	
Onancock							4						1	3	
Melfa															
Wachapreague (Painter)							1						1		
Oak Hall													2		1
Community (Exmore)		2		1				2					2		
Northampton Co.															
Wallops															
<b>Totals</b>	<b>0</b>	<b>2</b>	<b>0</b>	<b>6</b>	<b>2</b>	<b>1</b>	<b>5</b>	<b>2</b>	<b>14</b>	<b>0</b>	<b>0</b>	<b>0</b>	<b>20</b>	<b>11</b>	<b>1</b>

Hospital Destination by Unit	Station Receiving Aid		
	Riverside - Shore Memorial	PRMC	Other
Greenbackville	5	3	
Chincoteague	20	21	1
Saxis	3	3	
Bloxom	31		
Parksley	51	1	
Onancock	50		
Melfa	31		
Wachapreague (Painter)	25		
Oak Hall	35	12	
Wallops			
<b>Totals</b>	<b>251</b>	<b>40</b>	<b>1</b>

**Benchmark** = The Accomack County Board of Supervisors established a 20 minute standard for emergency response.

**NORS** = No Response by station or the call was handled by another station or agency.

**2nd Call** = 2nd ambulance call received while first ambulance was on another call.

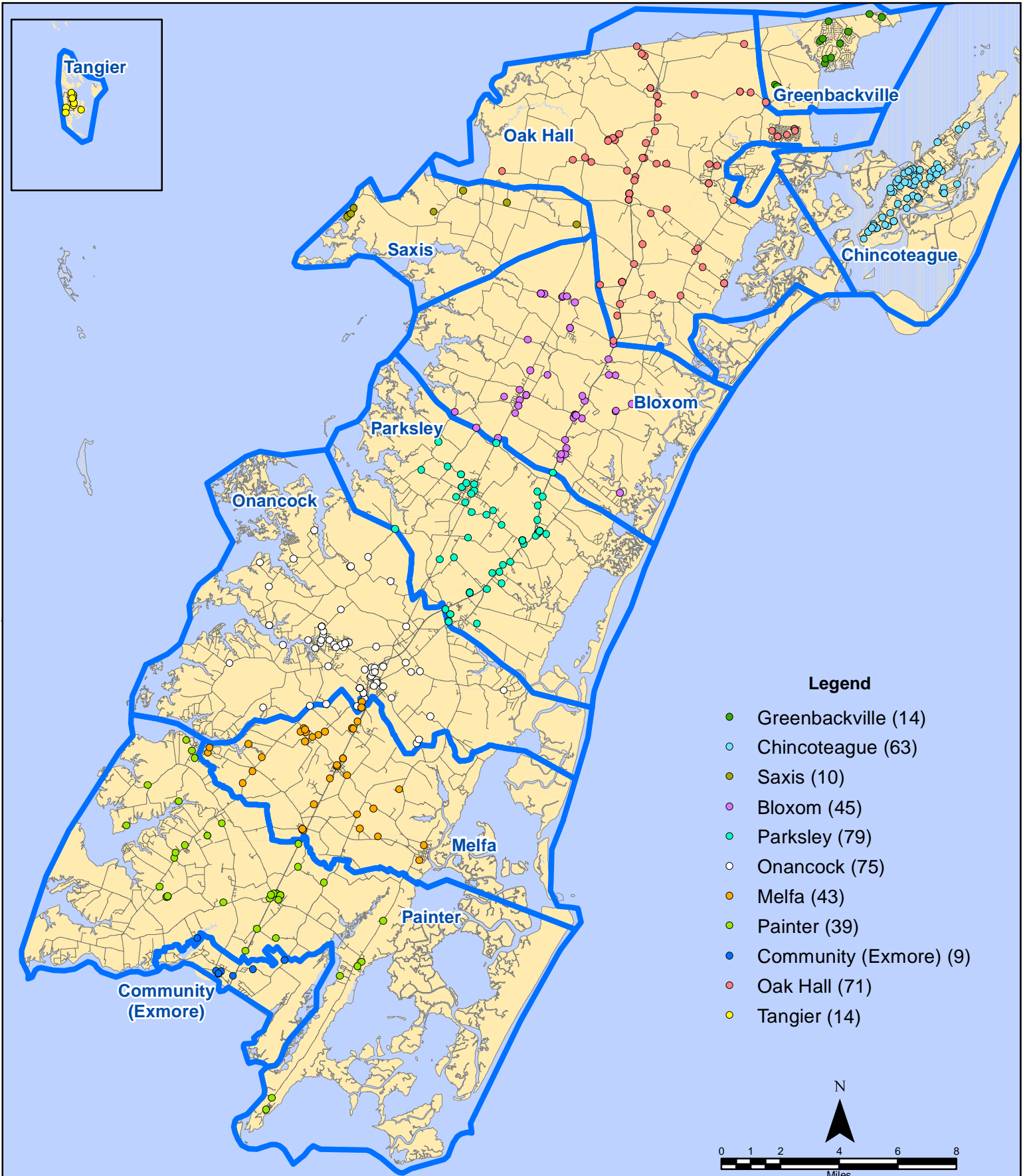
**3rd Call** = 3rd ambulance call received while first & second ambulances were on other calls.

\* This data excludes F1 Med (Medical Assist) calls in the Fire Data.

This information was prepared using data supplied by the Eastern Shore of Virginia 911 Center. This information is original incident data only and may not be representative of all units and/or stations who responded to an incident.

Station Receiving Aid

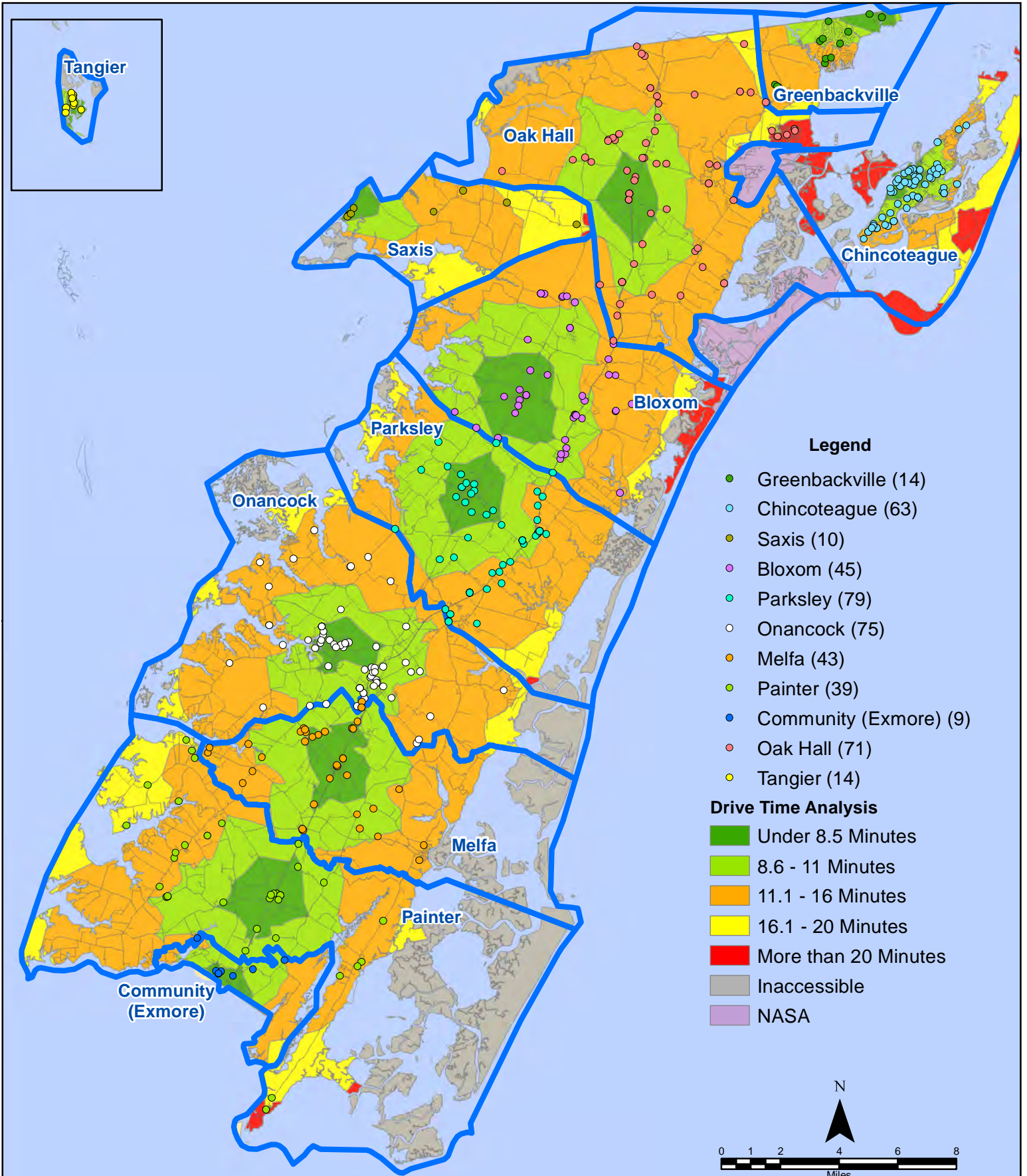
# October 2019 EMS Calls By District



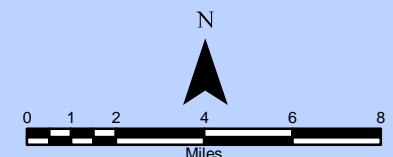
All points are plotted using X and Y coordinates provided by the ESVA 911 Center.  
Points may be plotted over one another when they are in close proximity.

Map Prepared by the Accomack County Department of Building, Planning & Economic Development using data from the ESVA 911 Center - November 21, 2019

# October 2019 EMS Calls By District



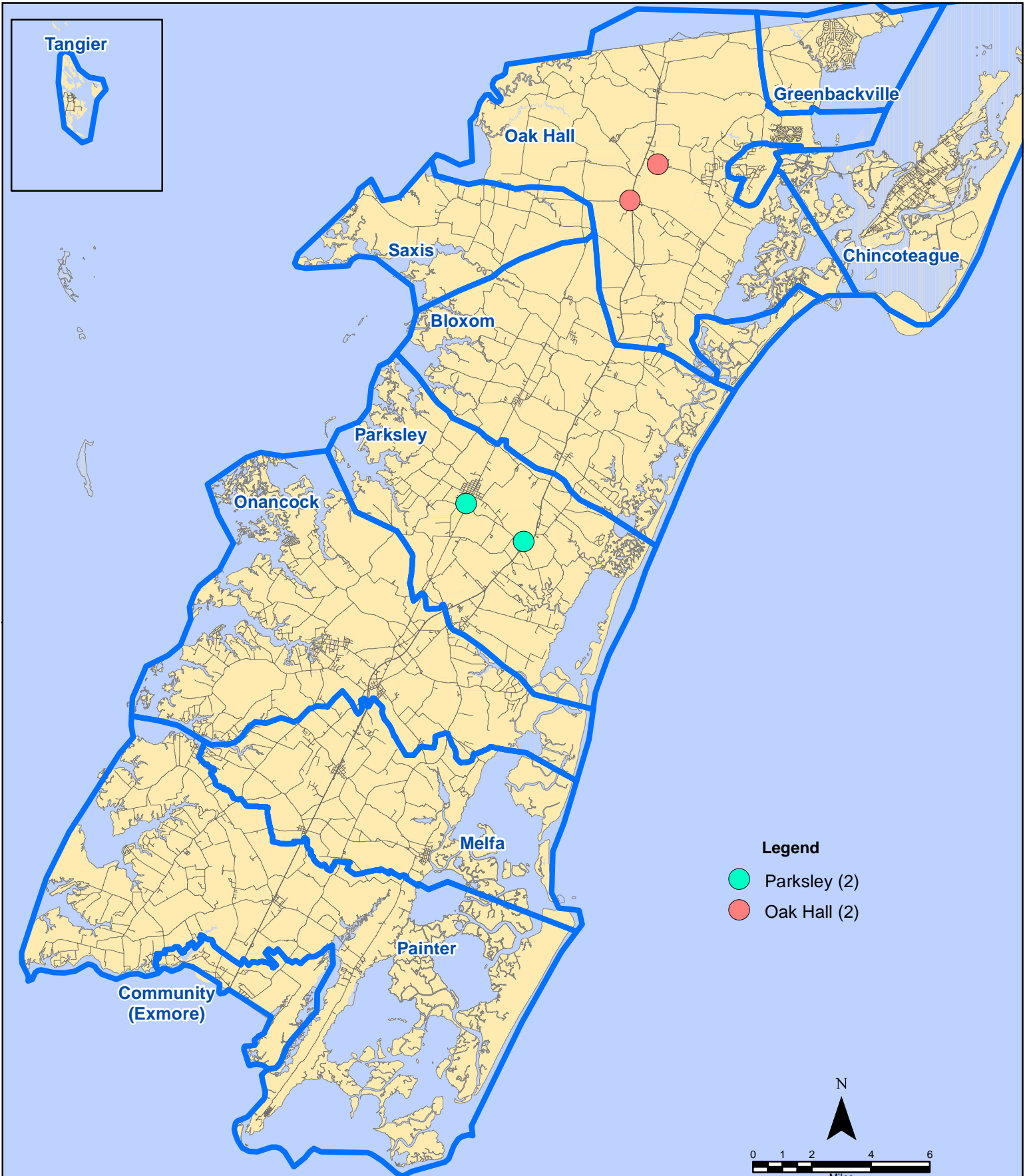
All points are plotted using X and Y coordinates provided by the ESVA 911 Center. Points may be plotted over one another when they are in close proximity.



Map Prepared by the Accomack County Department of Building, Planning & Economic Development using data from the ESVA 911 Center - November 21, 2019



# October 2019 EMS Calls With Response Time Greater Than 20 Mins.

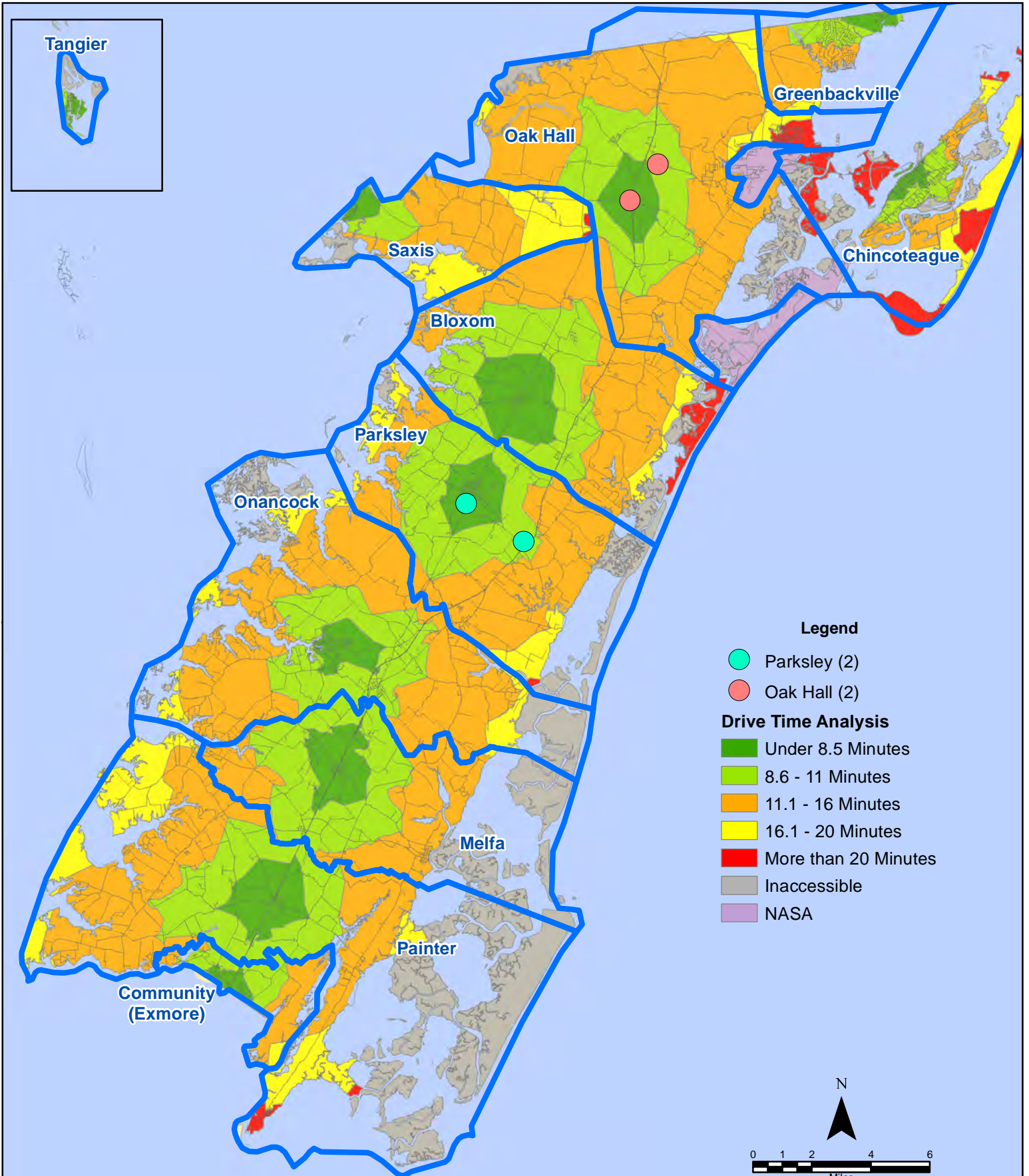


All points are plotted using X and Y coordinates provided by the ESVA 911 Center.  
Points may be plotted over one another when they are in close proximity.

Map Prepared by the Accomack County Department of Building, Planning & Economic Development using data from the ESVA 911 Center - November 21, 2019



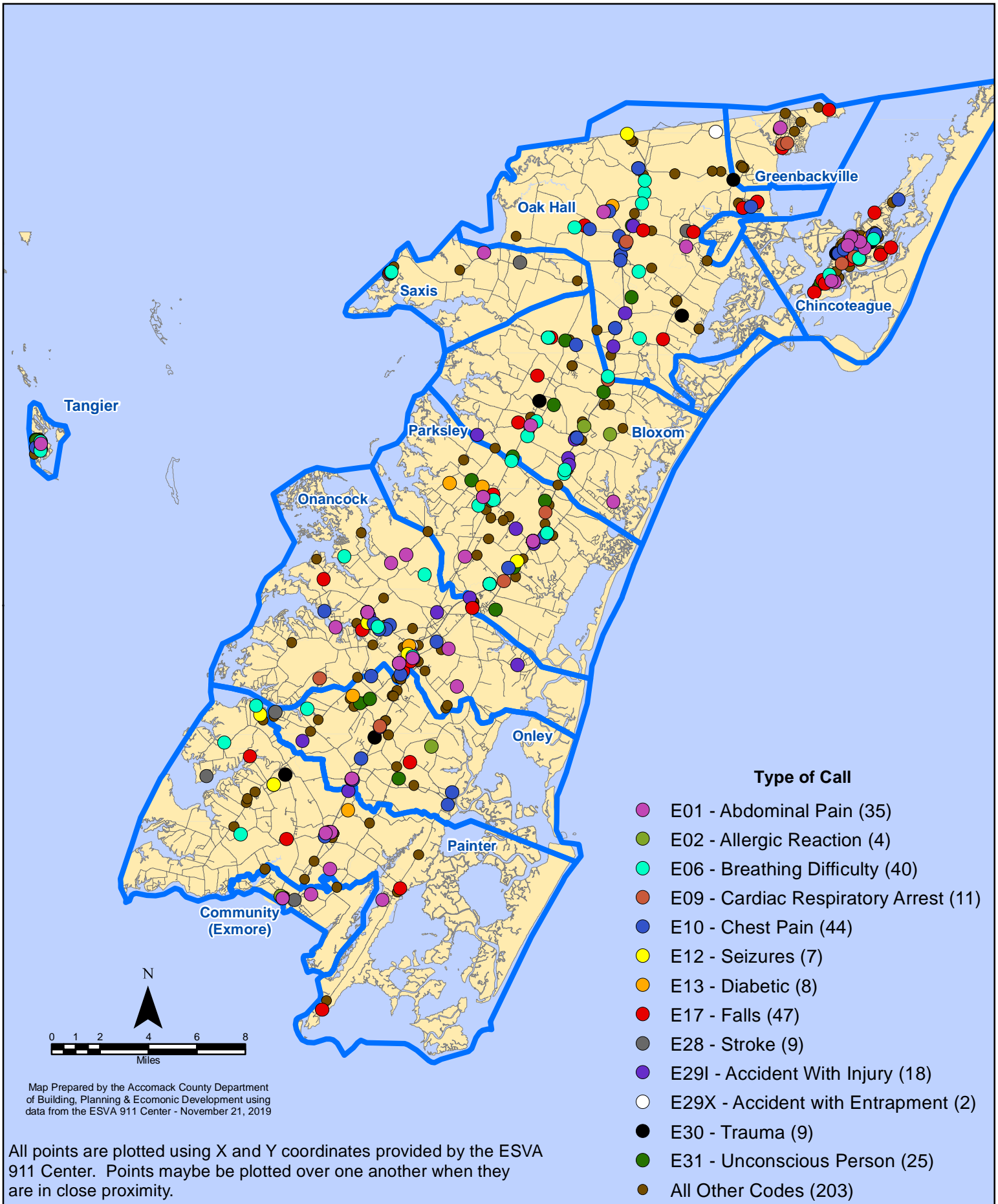
# October 2019 EMS Calls With Response Time Greater Than 20 Mins.



All points are plotted using X and Y coordinates provided by the ESVA 911 Center. Points may be plotted over one another when they are in close proximity.

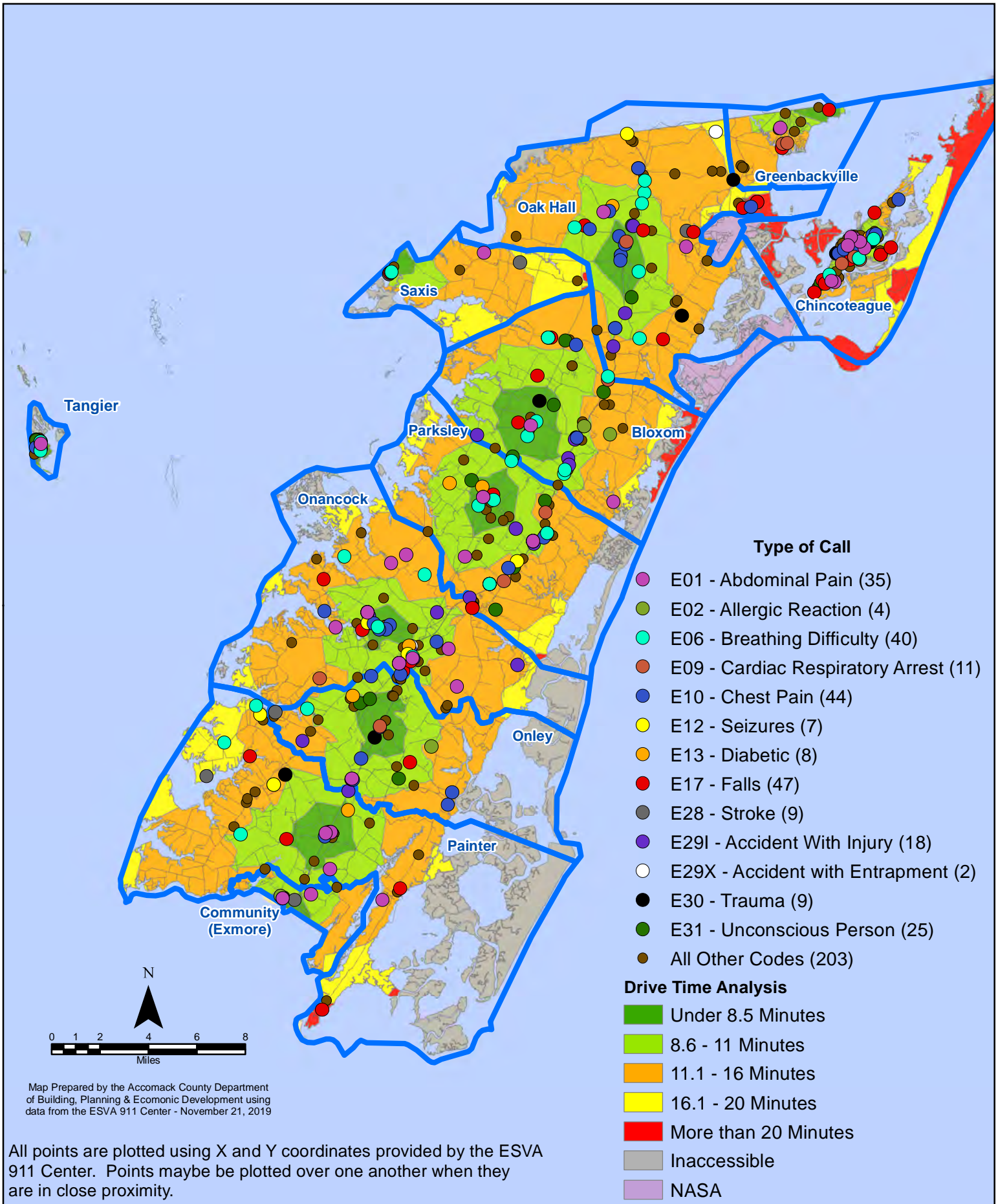
Map Prepared by the Accomack County Department of Building, Planning & Economic Development using data from the ESVA 911 Center - November 21, 2019

# October 2019 EMS Calls By Type



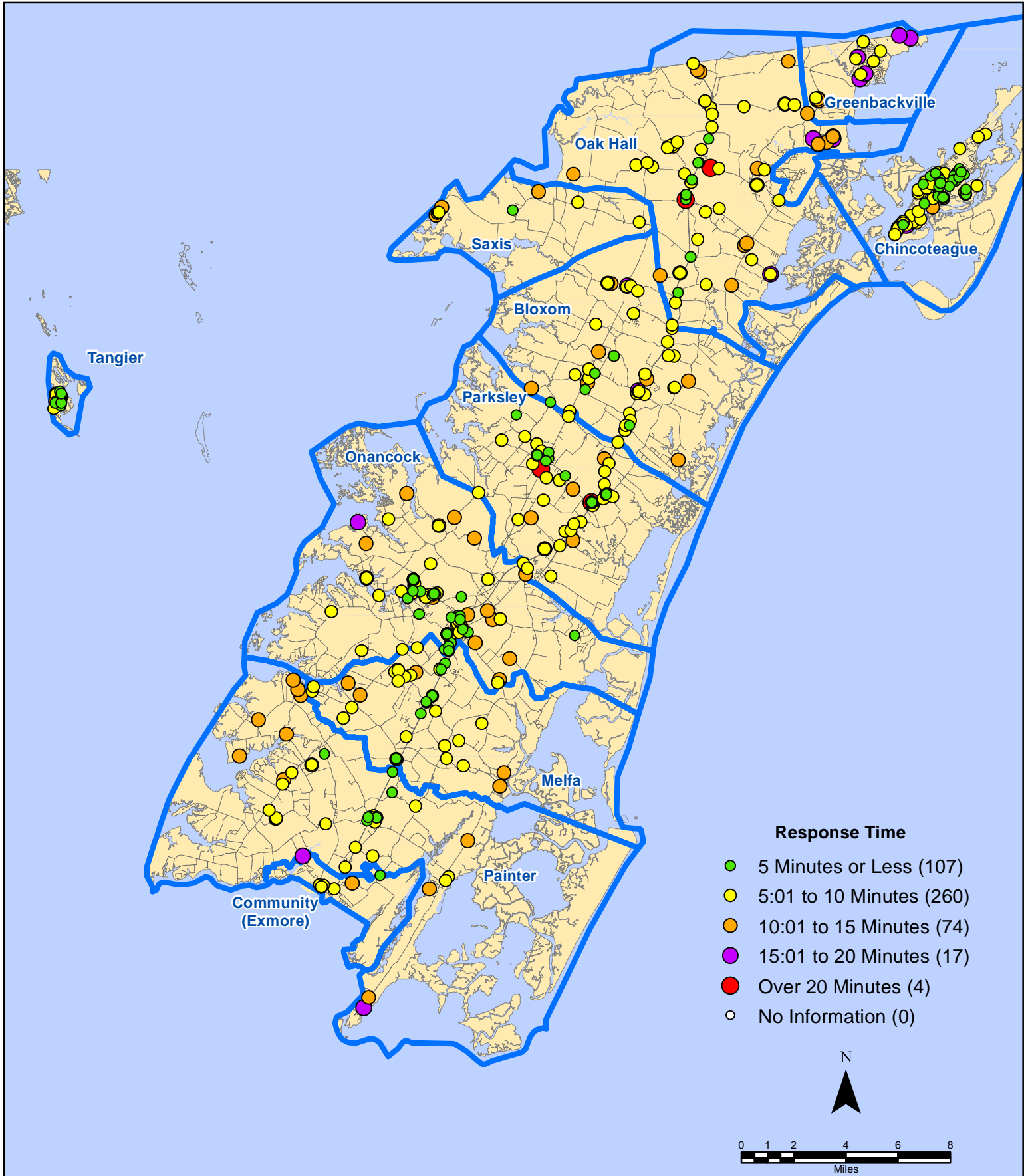


# October 2019 EMS Calls By Type





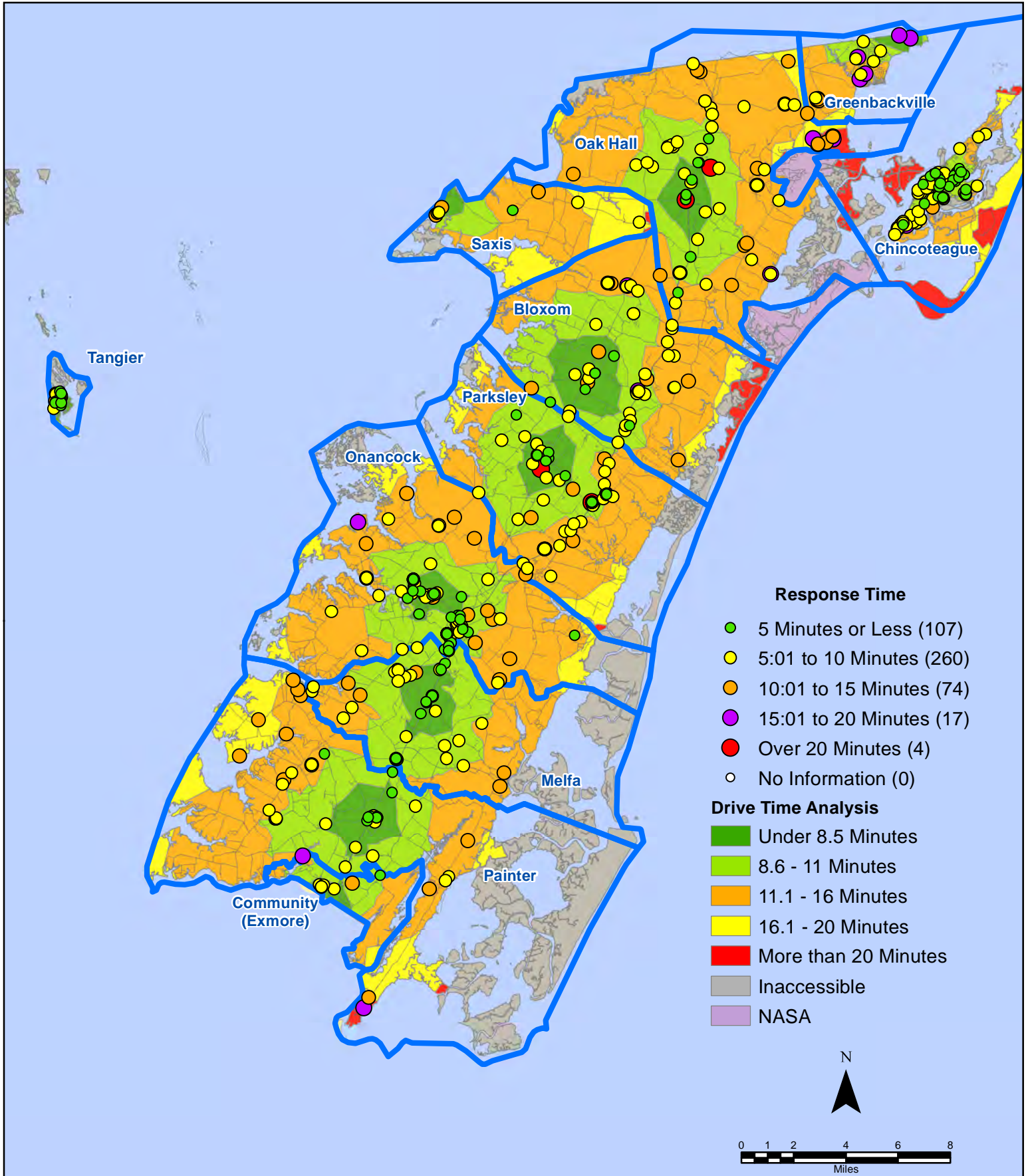
# September 2019 EMS Calls By Response Time



All points are plotted using X and Y coordinates provided by the ESVA 911 Center.  
Points may be plotted over one another when they are in close proximity.

Map Prepared by the Accomack County Department of Building, Planning & Economic Development using data from the ESVA 911 Center - November 21, 2019

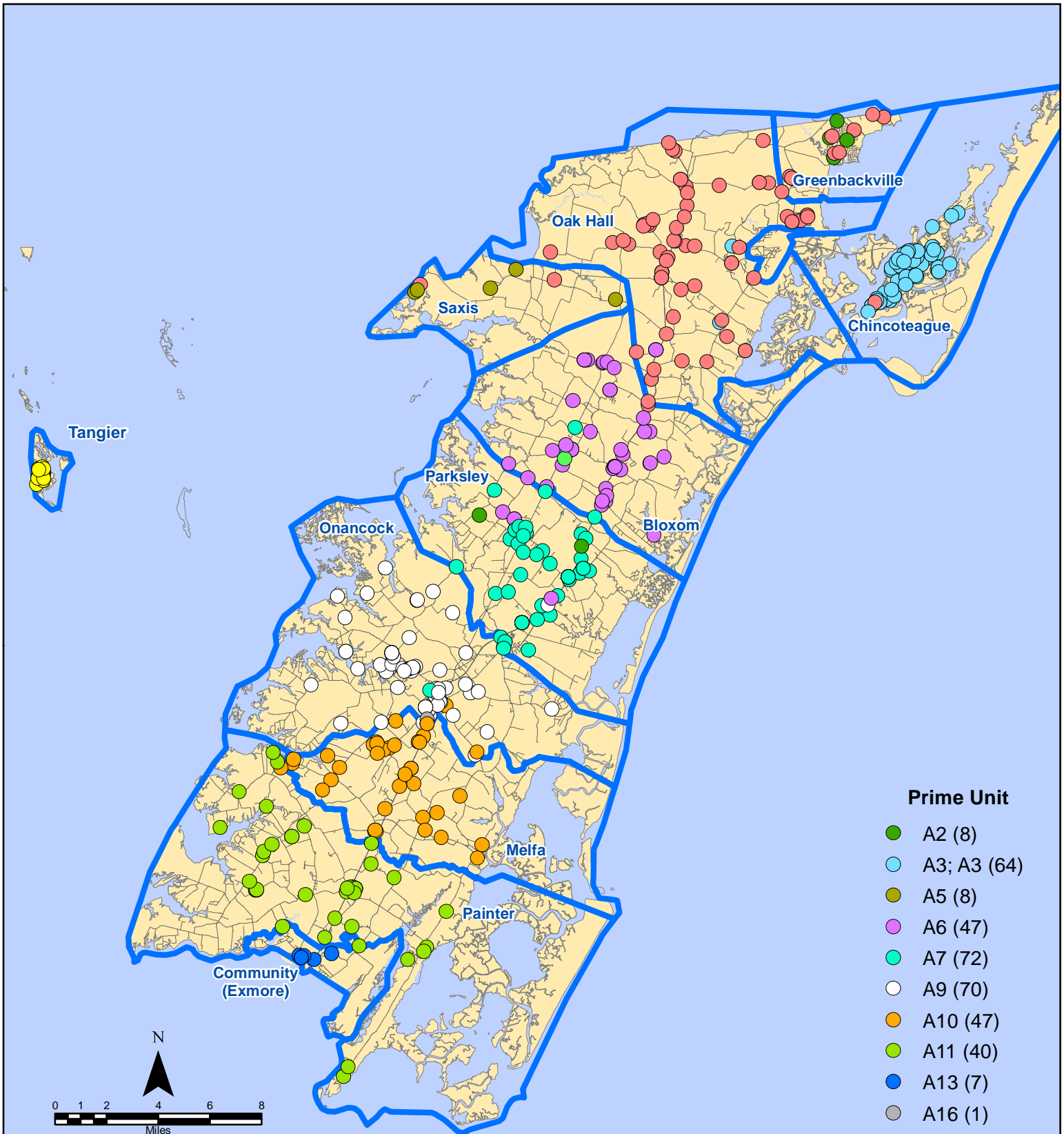
# September 2019 EMS Calls By Response Time



All points are plotted using X and Y coordinates provided by the ESVA 911 Center.  
Points may be plotted over one another when they are in close proximity.

Map Prepared by the Accomack County Department of Building, Planning & Economic Development using data from the ESVA 911 Center - November 21, 2019

# October 2019 EMS Calls By Prime Unit

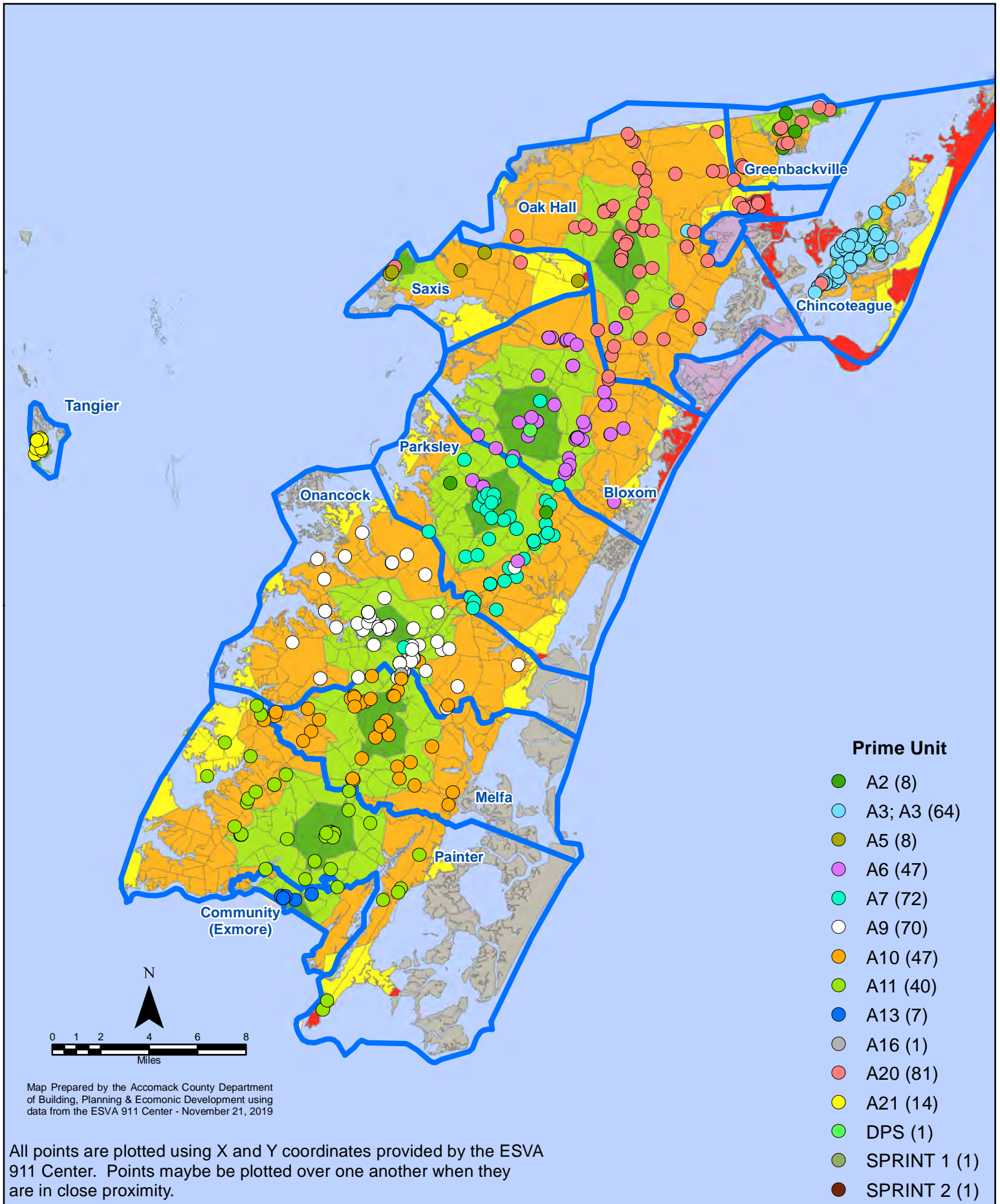


Map Prepared by the Accomack County Department of Building, Planning & Economic Development using data from the ESVA 911 Center - November 21, 2019

All points are plotted using X and Y coordinates provided by the ESVA 911 Center. Points may be plotted over one another when they are in close proximity.



# October 2019 EMS Calls By Prime Unit



# October 2019 Fire Calls By District

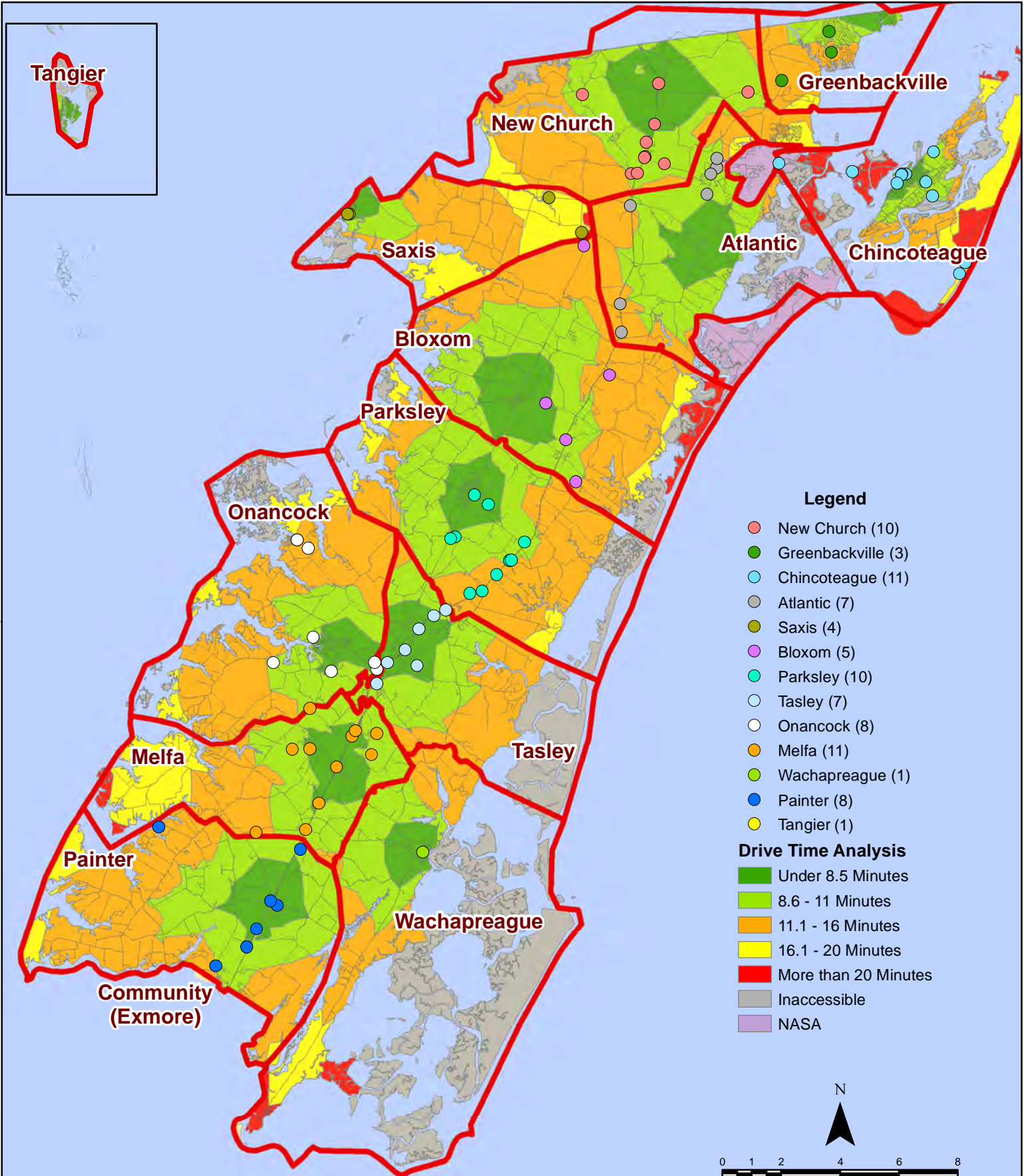


All points are plotted using X and Y coordinates provided by the ESVA 911 Center. Points may be plotted over one another when they are in close proximity.

Map Prepared by the Accomack County Department of Building, Planning & Economic Development using data from the ESVA 911 Center - November 21, 2019



# October 2019 Fire Calls By District

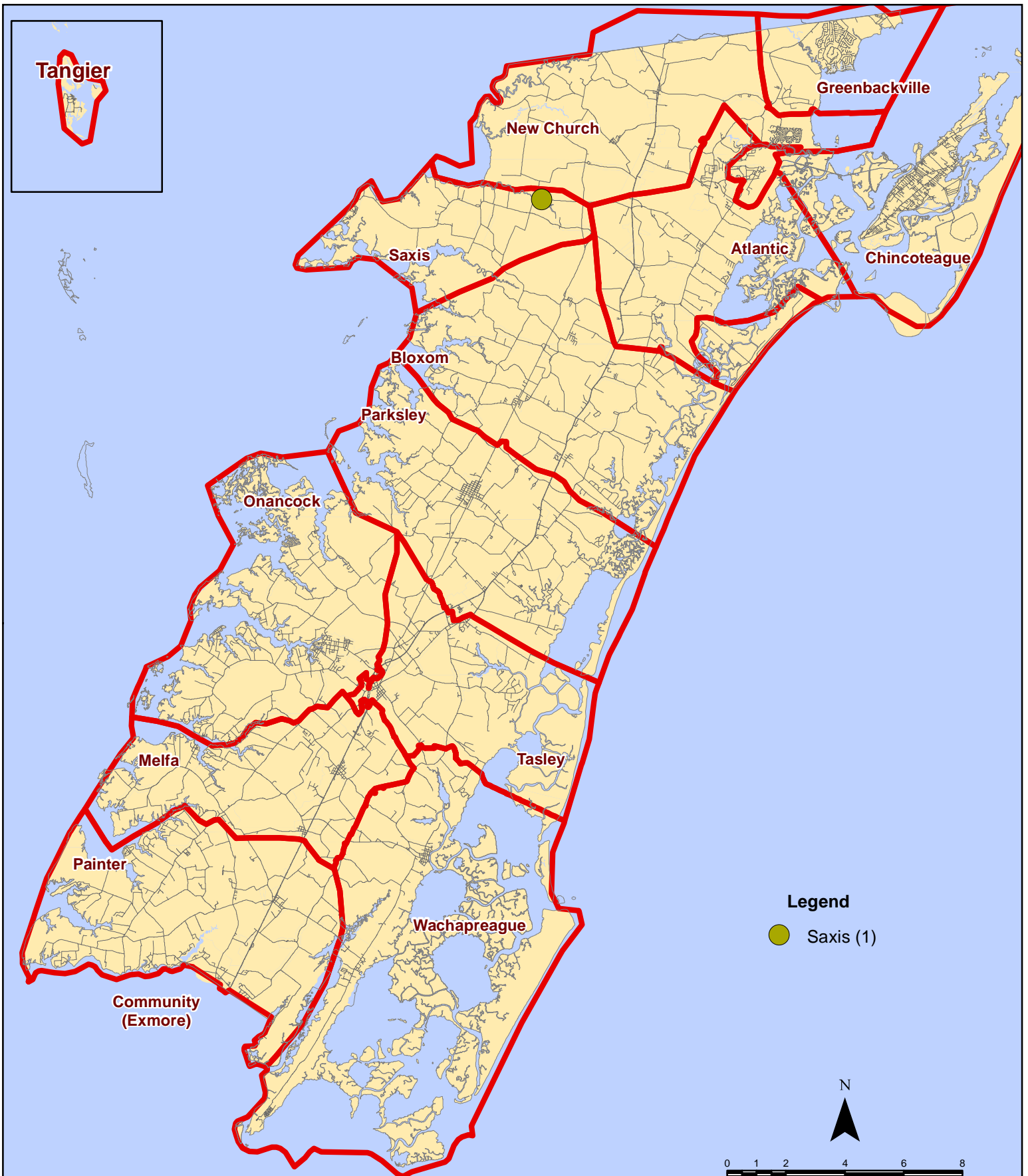


All points are plotted using X and Y coordinates provided by the ESVA 911 Center. Points may be plotted over one another when they are in close proximity.

Map Prepared by the Accomack County Department of Building, Planning & Economic Development using data from the ESVA 911 Center - November 21, 2019

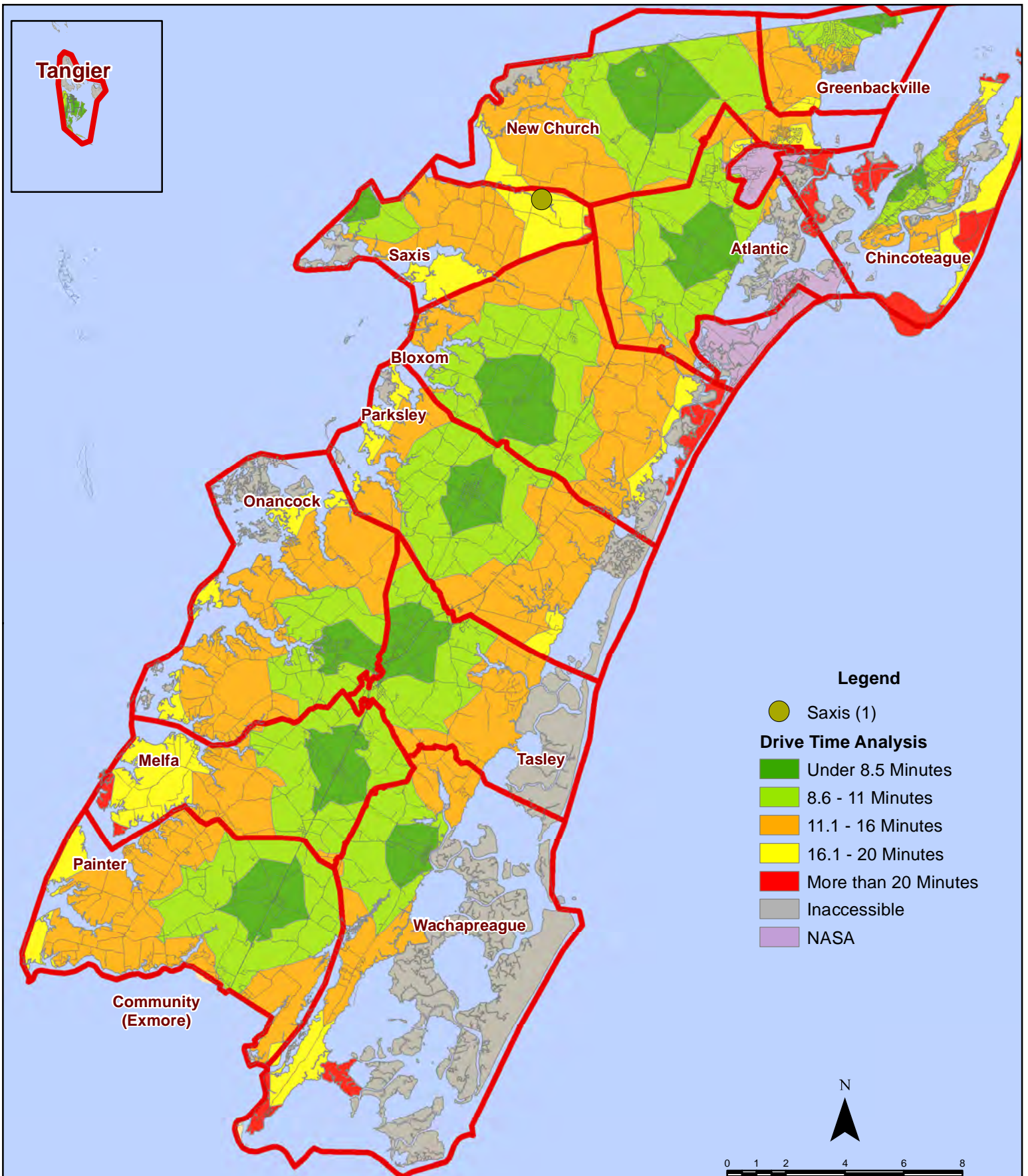


# October 2019 Fire Calls With Response Time Greater Than 20 Mins.



All points are plotted using X and Y coordinates provided by the ESVA 911 Center. Points may be plotted over one another when they are in close proximity.

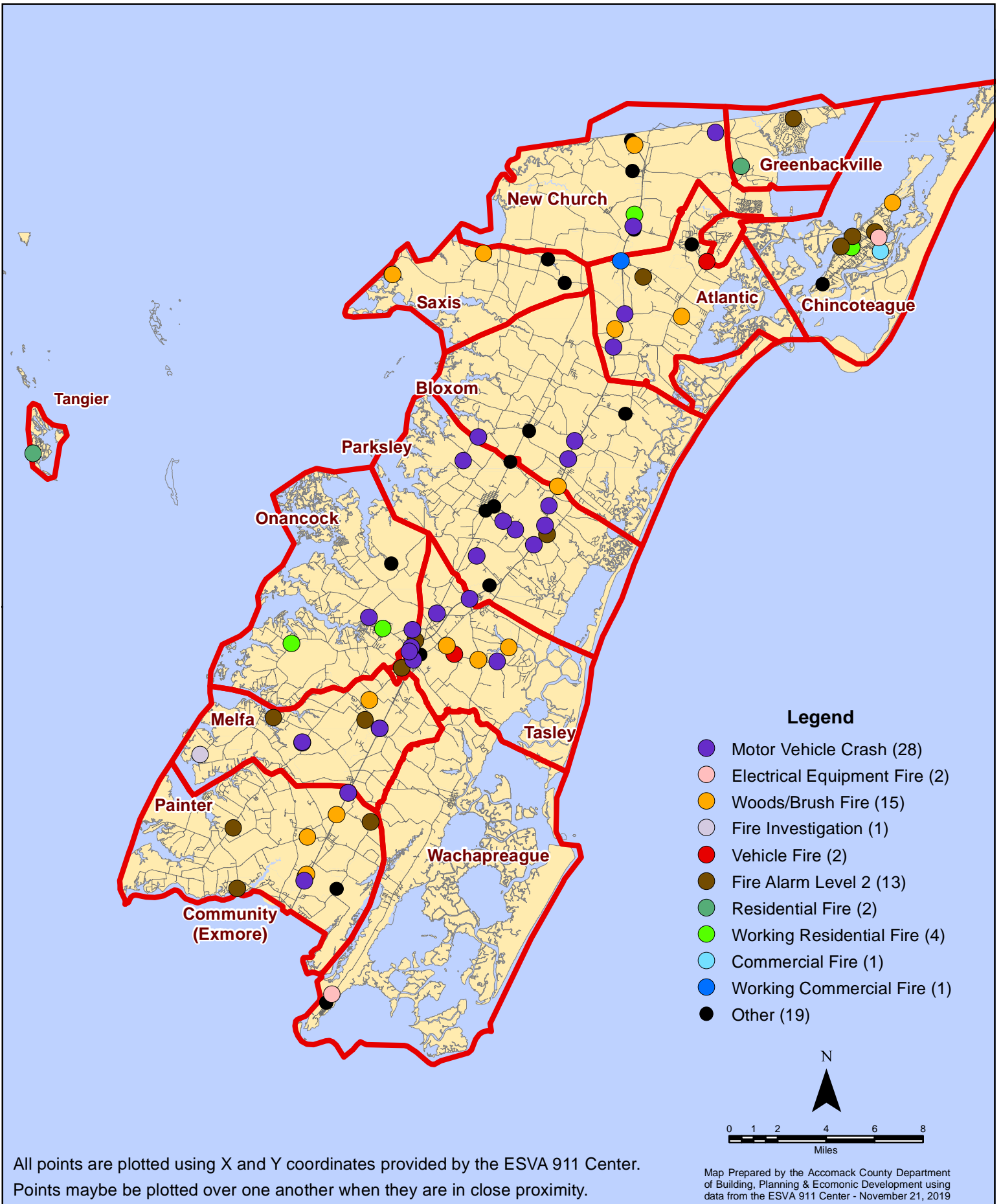
# October 2019 Fire Calls With Response Time Greater Than 20 Mins.



All points are plotted using X and Y coordinates provided by the ESVA 911 Center. Points may be plotted over one another when they are in close proximity.

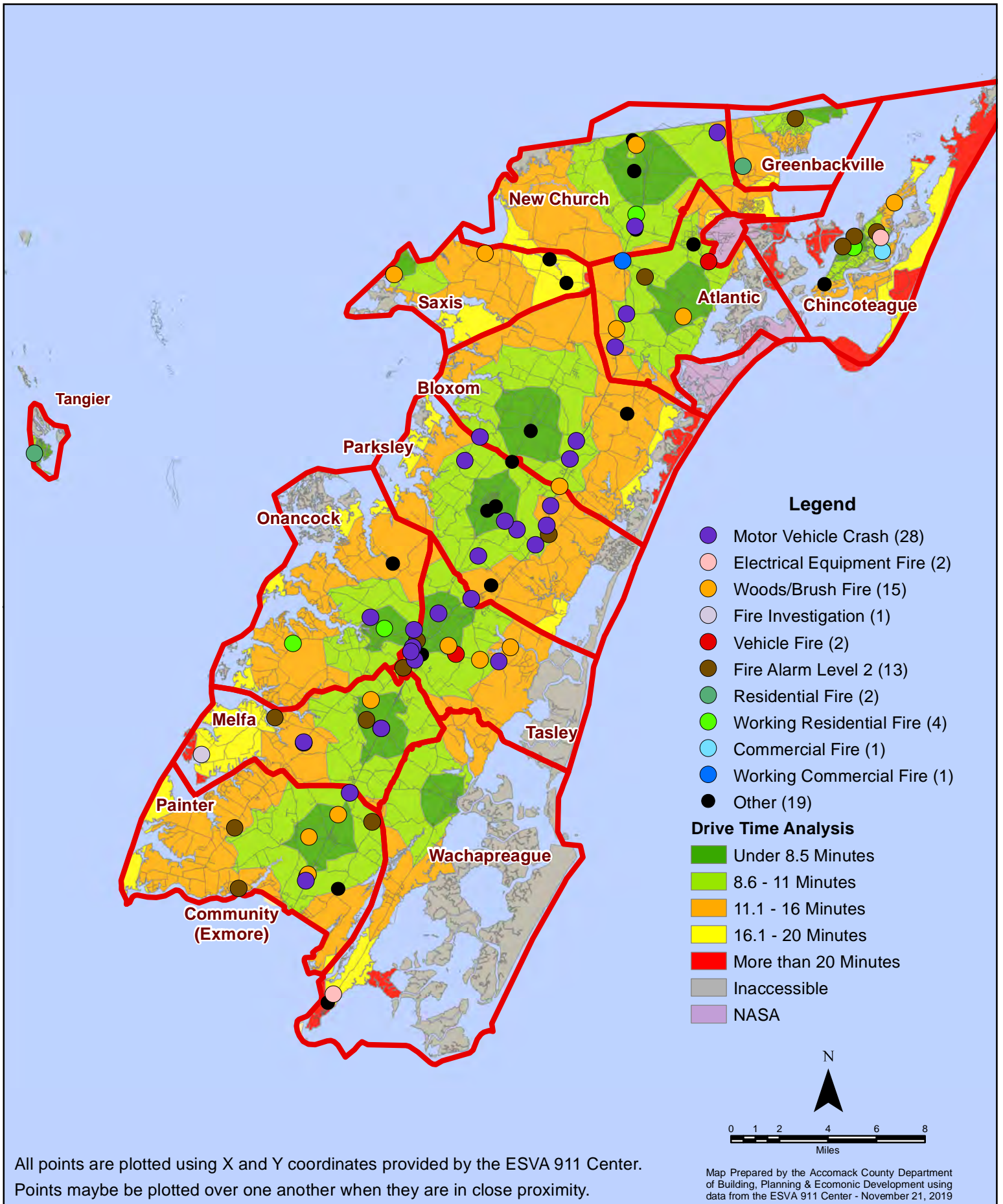


# October 2019 Fire Calls By Type



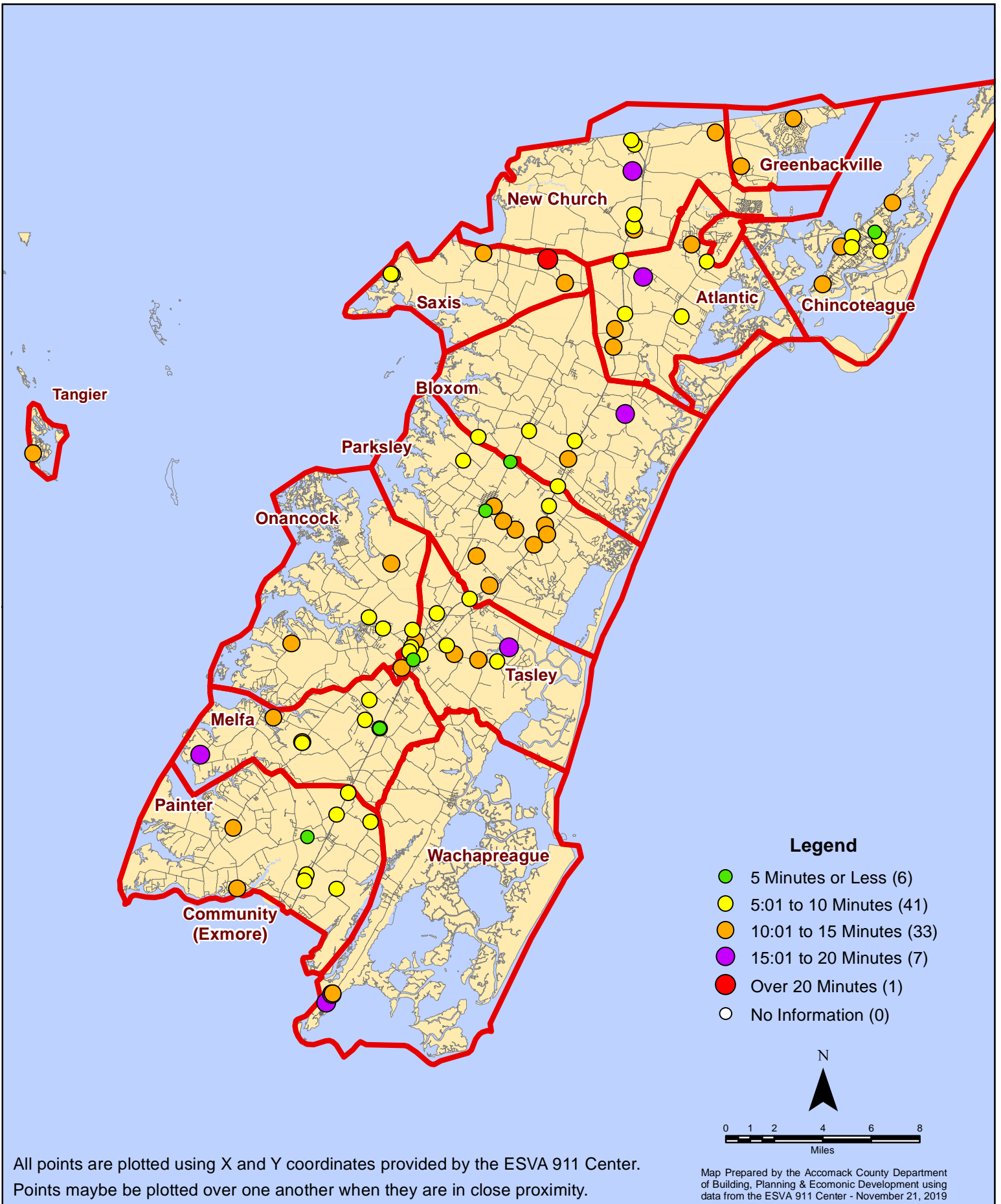


# October 2019 Fire Calls By Type



All points are plotted using X and Y coordinates provided by the ESVA 911 Center. Points may be plotted over one another when they are in close proximity.

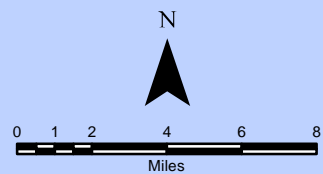
# October 2019 Fire Calls By Response Time



All points are plotted using X and Y coordinates provided by the ESVA 911 Center. Points may be plotted over one another when they are in close proximity.

**Legend**

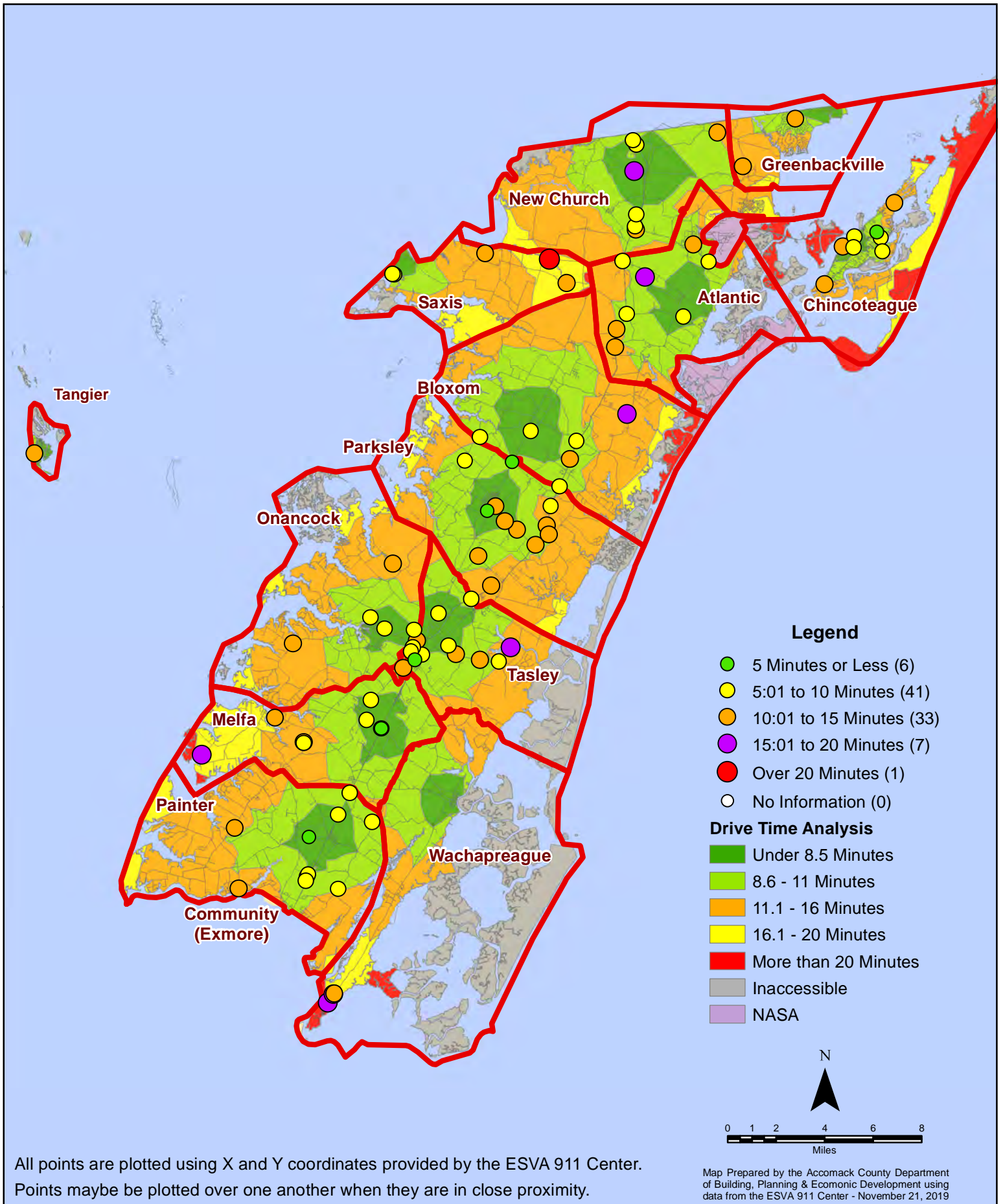
- 5 Minutes or Less (6)
- 5:01 to 10 Minutes (41)
- 10:01 to 15 Minutes (33)
- 15:01 to 20 Minutes (7)
- Over 20 Minutes (1)
- No Information (0)



Map Prepared by the Accomack County Department of Building, Planning & Economic Development using data from the ESVA 911 Center - November 21, 2019



# October 2019 Fire Calls By Response Time



All points are plotted using X and Y coordinates provided by the ESVA 911 Center. Points may be plotted over one another when they are in close proximity.

Map Prepared by the Accomack County Department of Building, Planning & Economic Development using data from the ESVA 911 Center - November 21, 2019