

July 2020

Fire - Performance Measure Data *					
Response District	Total Calls in District	Greater than 20 min. Response Time	Longest Response Time	Calls Handled by other agency	Overall Station Benchmark %
New Church	12	1	0:20:24	3	91.7%
Greenbackville	6	0	0:17:49	0	100.0%
Chincoteague	17	1	0:21:11	0	94.1%
Atlantic	13	0	0:13:24	1	100.0%
Saxis	6	1	0:21:00	0	83.3%
Bloxom	13	0	0:12:42	0	100.0%
Parksley	20	0	0:19:02	1	100.0%
Tasley	7	0	0:10:36	1	100.0%
Onancock	10	2	0:21:05	1	80.0%
Melfa	12	0	0:17:20	3	100.0%
Wachapreague	6	0	0:08:55	1	100.0%
Painter	4	0	0:09:11	0	100.0%
Tangier	2	0	0:13:36	0	100.0%
System Totals	128	5	0:21:05	11	96.1%

EMS - Performance Measure Data						
Response District	Total Calls in District	Greater than 20 min. Response Time	Longest Response Time	Calls Handled by other agency	Station Benchmark Compliance %	Overall Station Reliability %
Greenbackville	17	2	0:28:15	13	88.2%	23.5%
Chincoteague	95	4	0:23:16	9	95.8%	90.5%
Saxis	14	1	0:21:08	3	92.9%	78.6%
Bloxom	28	0	0:16:22	4	100.0%	85.7%
Parksley	64	0	0:14:31	2	100.0%	96.9%
Onancock	76	0	0:18:17	3	100.0%	96.1%
Melfa	48	0	0:19:05	5	100.0%	89.6%
Wachapreague (Painter)	43	0	0:16:59	3	100.0%	93.0%
Oak Hall	102	3	0:31:02	12	97.1%	88.2%
Tangier	14	1	0:22:52	0	92.9%	100.0%
Community (Exmore)	6	0	0:10:55	3	100.0%	50.0%
System Totals	507	11	0:31:02	57	97.8%	88.8%

Station Receiving Aid	EMS Mutual Aid Data														
	Station Giving Aid												NORS	2nd Call	3rd Call
Greenbackville	Chincoteague	Saxis	Bloxom	Parksley	Onancock	Melfa	Wachapreague/Painter	Oak Hall	Community (Exmore)	Northampton	Wallops				
Greenbackville		1						12					13		
Chincoteague								8			1			9	
Saxis								3					3		
Bloxom				3	1								2	2	
Parksley						1		1					1	1	
Onancock				1		1	1						3		
Melfa							4		1				3	2	
Wachapreague (Painter)						2			1				2	1	
Oak Hall	2	3		6							1		1	6	5
Community (Exmore)							3						3		
Northampton Co.															
Wallops															
Totals	2	4	0	6	4	1	4	8	24	2	0	2	28	24	5

Hospital Destination by Unit	Transport Destination		
	Riverside - Shore Memorial	PRMC	Other
Greenbackville	1	2	
Chincoteague	25	36	1
Saxis	6	3	
Bloxom	40	1	6
Parksley	38		
Onancock	48		
Melfa	26		1
Wachapreague (Painter)	42		
Oak Hall	43	29	
Wallops		1	1
Totals	269	72	9

Benchmark = The Accomack County Board of Supervisors established a 20 minute standard for emergency response.

NORS = No Response by station or the call was handled by another station or agency.

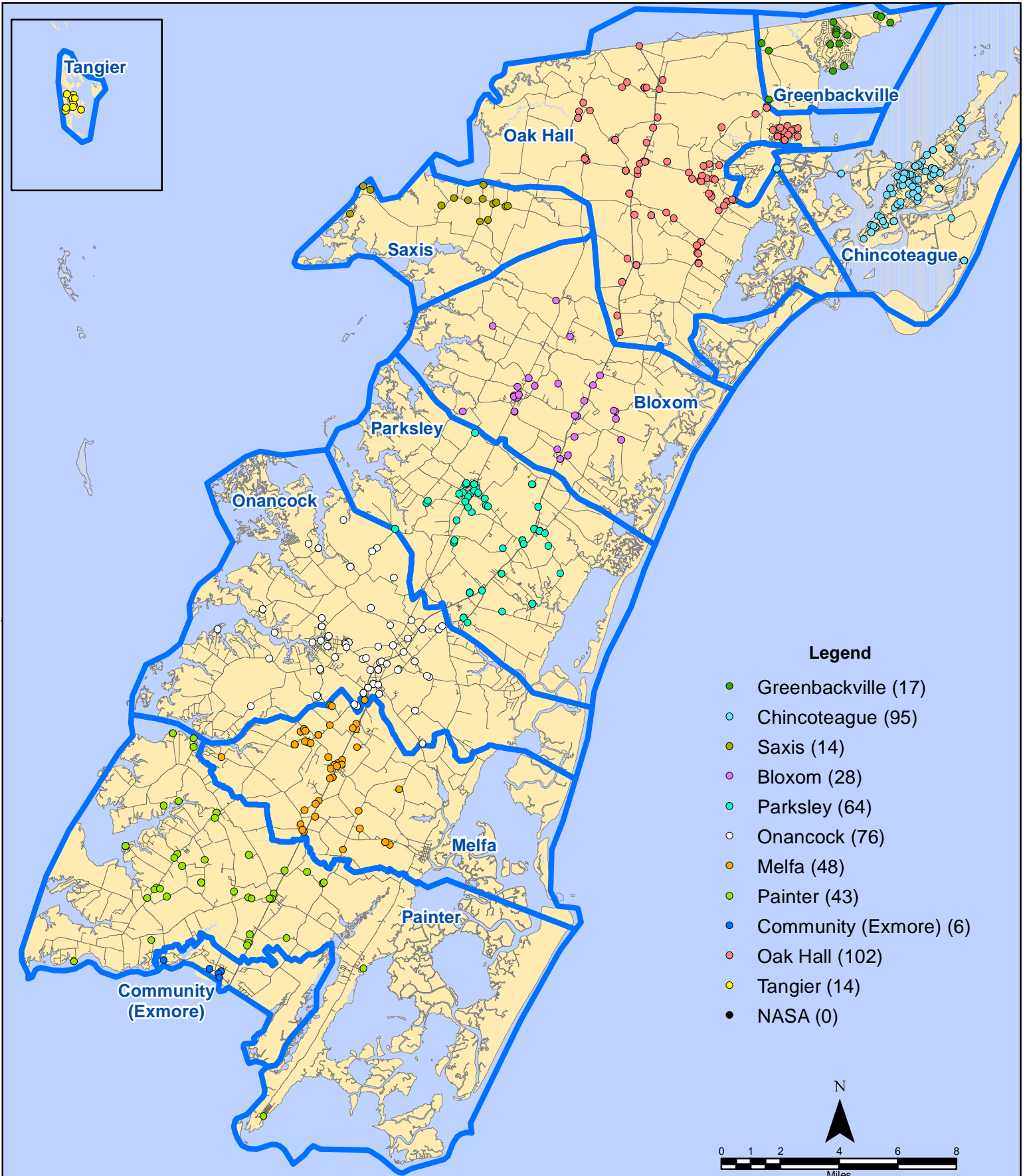
2nd Call = 2nd ambulance call received while first ambulance was on another call.

3rd Call = 3rd ambulance call received while first & second ambulances were on other calls.

* This data excludes F1 Med (Medical Assist) calls in the Fire Data.

This information was prepared using data supplied by the Eastern Shore of Virginia 911 Center. This information is original incident data only and may not be representative of all units and/or stations who responded to an incident.

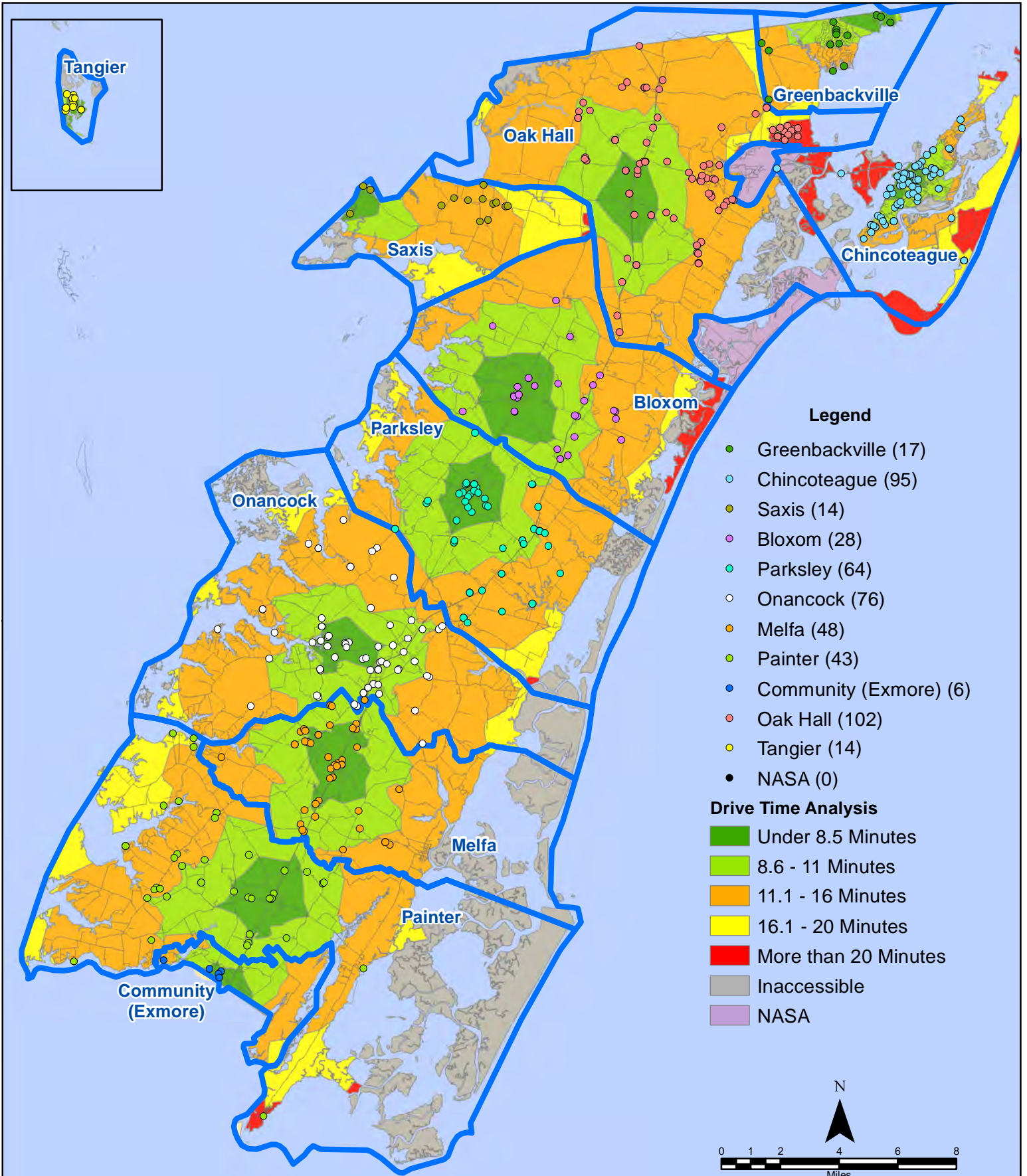
July 2020 EMS Calls By District



All points are plotted using X and Y coordinates provided by the ESVA 911 Center.
Points may be plotted over one another when they are in close proximity.

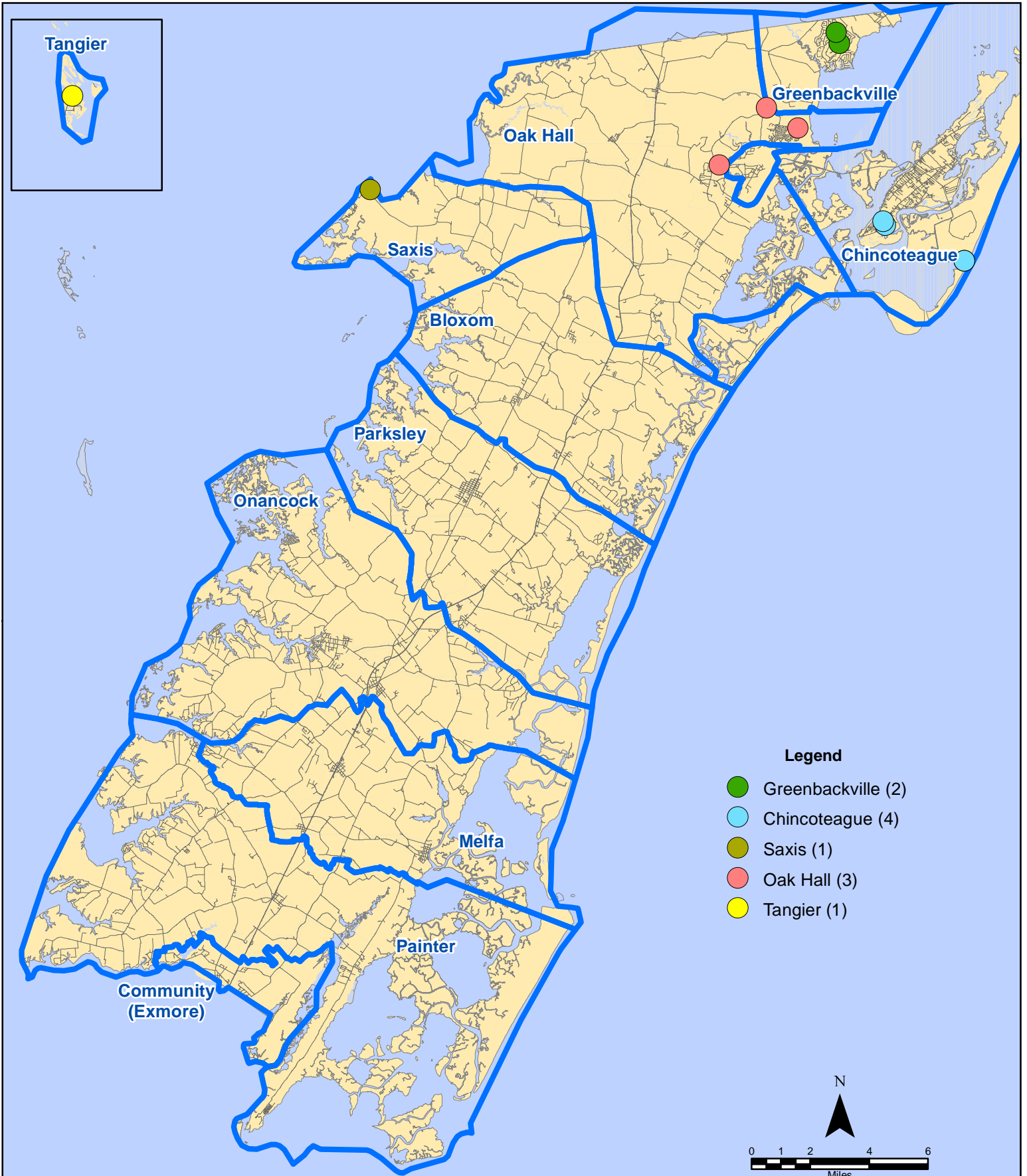
Map Prepared by the Accomack County Department of Building, Planning & Economic Development using data from the ESVA 911 Center - October 15, 2020

July 2020 EMS Calls By District



All points are plotted using X and Y coordinates provided by the ESVA 911 Center. Points may be plotted over one another when they are in close proximity.

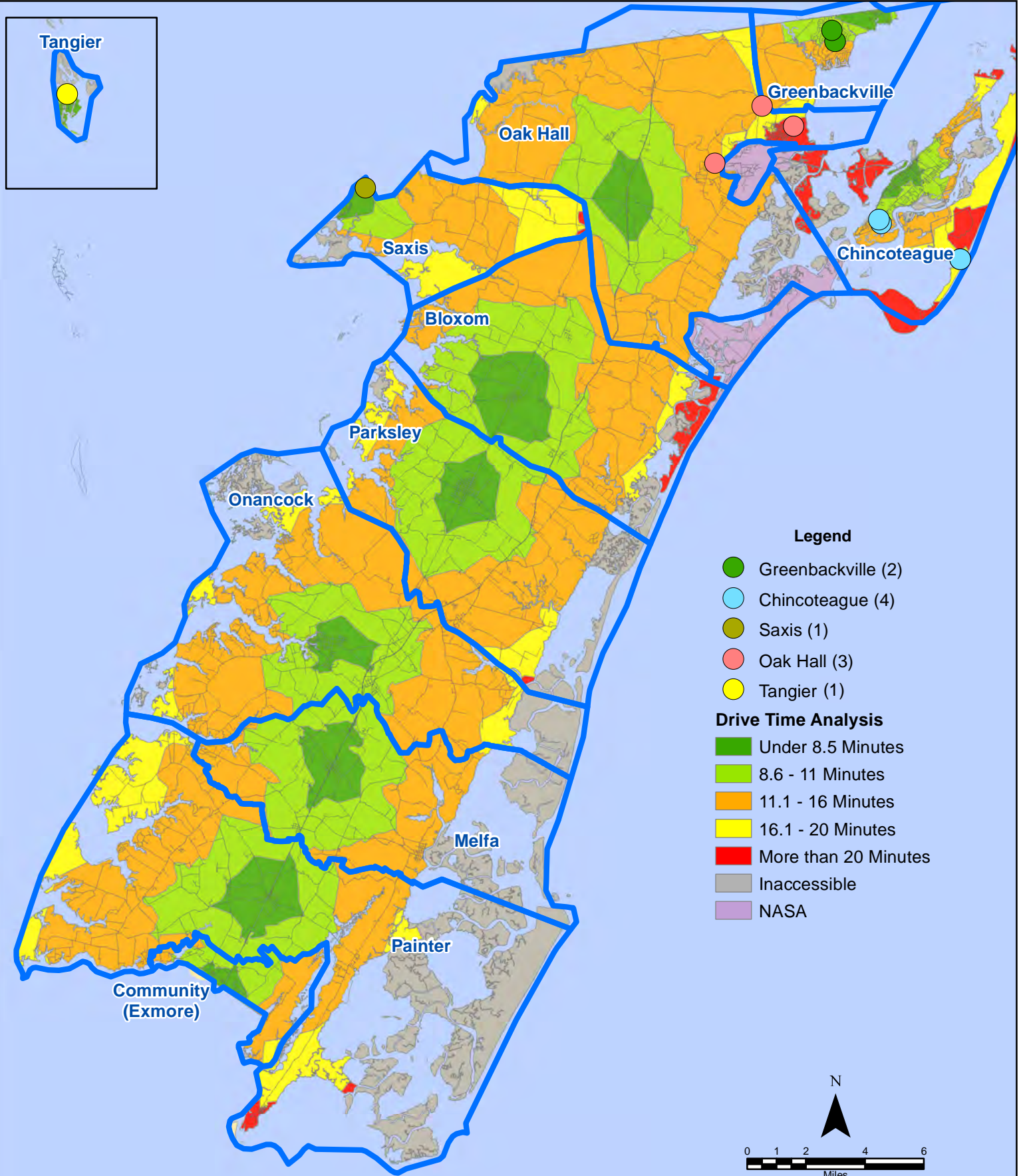
July 2020 EMS Calls With Response Time Greater Than 20 Mins.



All points are plotted using X and Y coordinates provided by the ESVA 911 Center. Points may be plotted over one another when they are in close proximity.

Map Prepared by the Accomack County Department of Building, Planning & Economic Development using data from the ESVA 911 Center - October 15, 2020

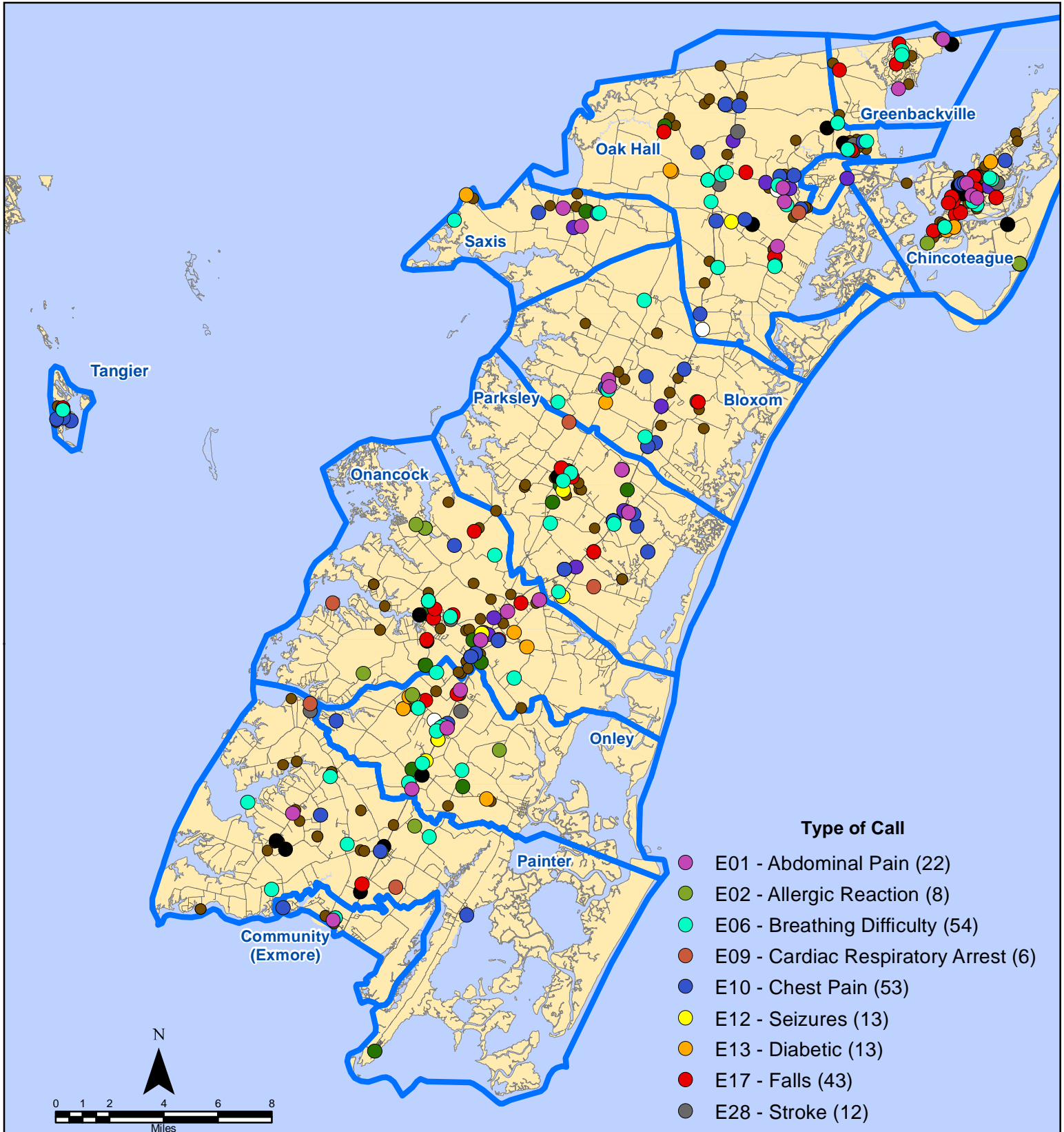
July 2020 EMS Calls With Response Time Greater Than 20 Mins.



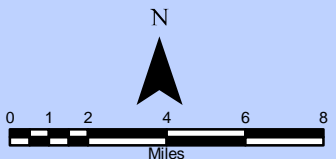
All points are plotted using X and Y coordinates provided by the ESVA 911 Center. Points may be plotted over one another when they are in close proximity.

Map Prepared by the Accomack County Department of Building, Planning & Economic Development using data from the ESVA 911 Center - October 15, 2020

July 2020 EMS Calls By Type



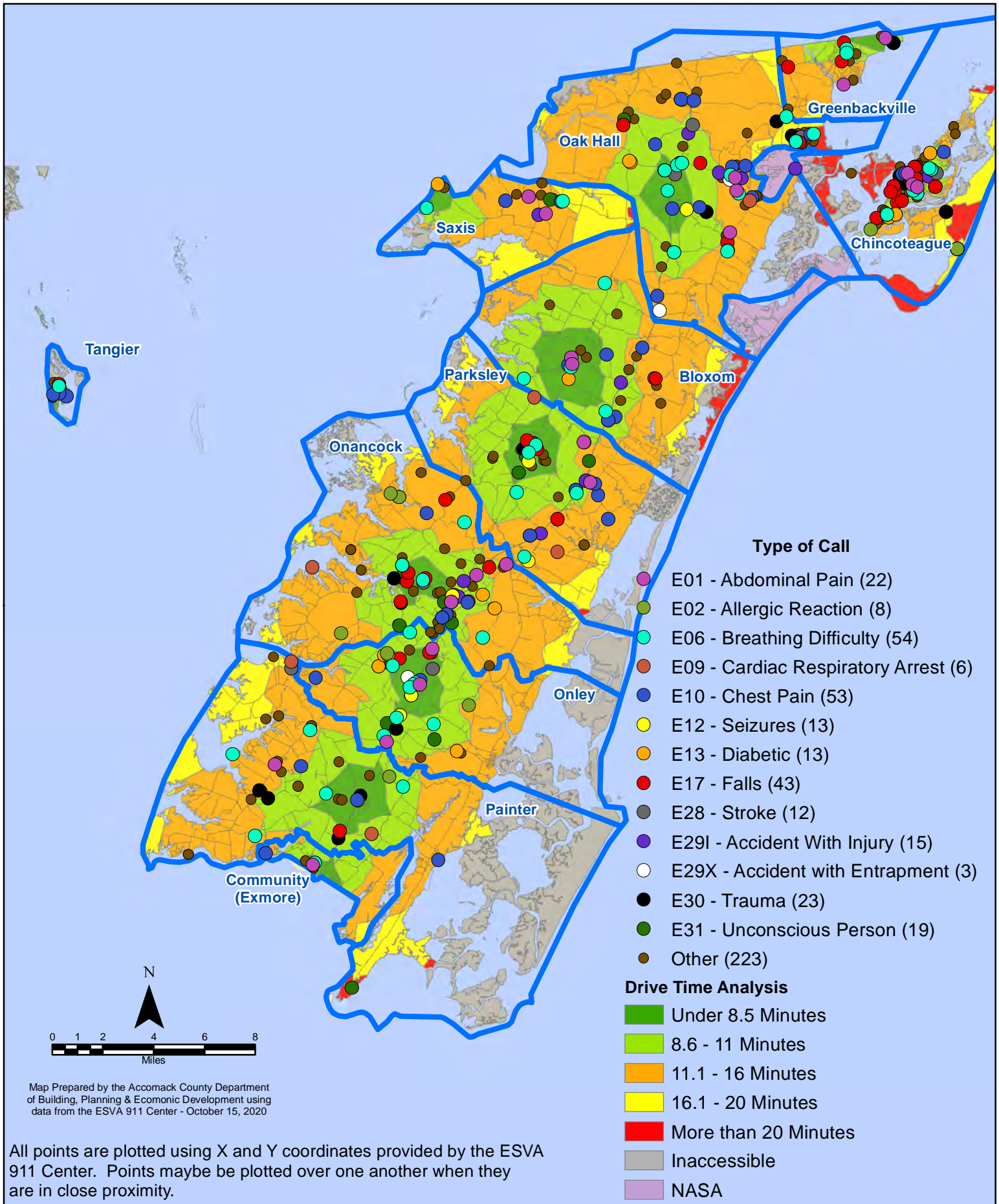
- Type of Call**
- E01 - Abdominal Pain (22)
 - E02 - Allergic Reaction (8)
 - E06 - Breathing Difficulty (54)
 - E09 - Cardiac Respiratory Arrest (6)
 - E10 - Chest Pain (53)
 - E12 - Seizures (13)
 - E13 - Diabetic (13)
 - E17 - Falls (43)
 - E28 - Stroke (12)
 - E29I - Accident With Injury (15)
 - E29X - Accident with Entrapment (3)
 - E30 - Trauma (23)
 - E31 - Unconscious Person (19)
 - Other (223)



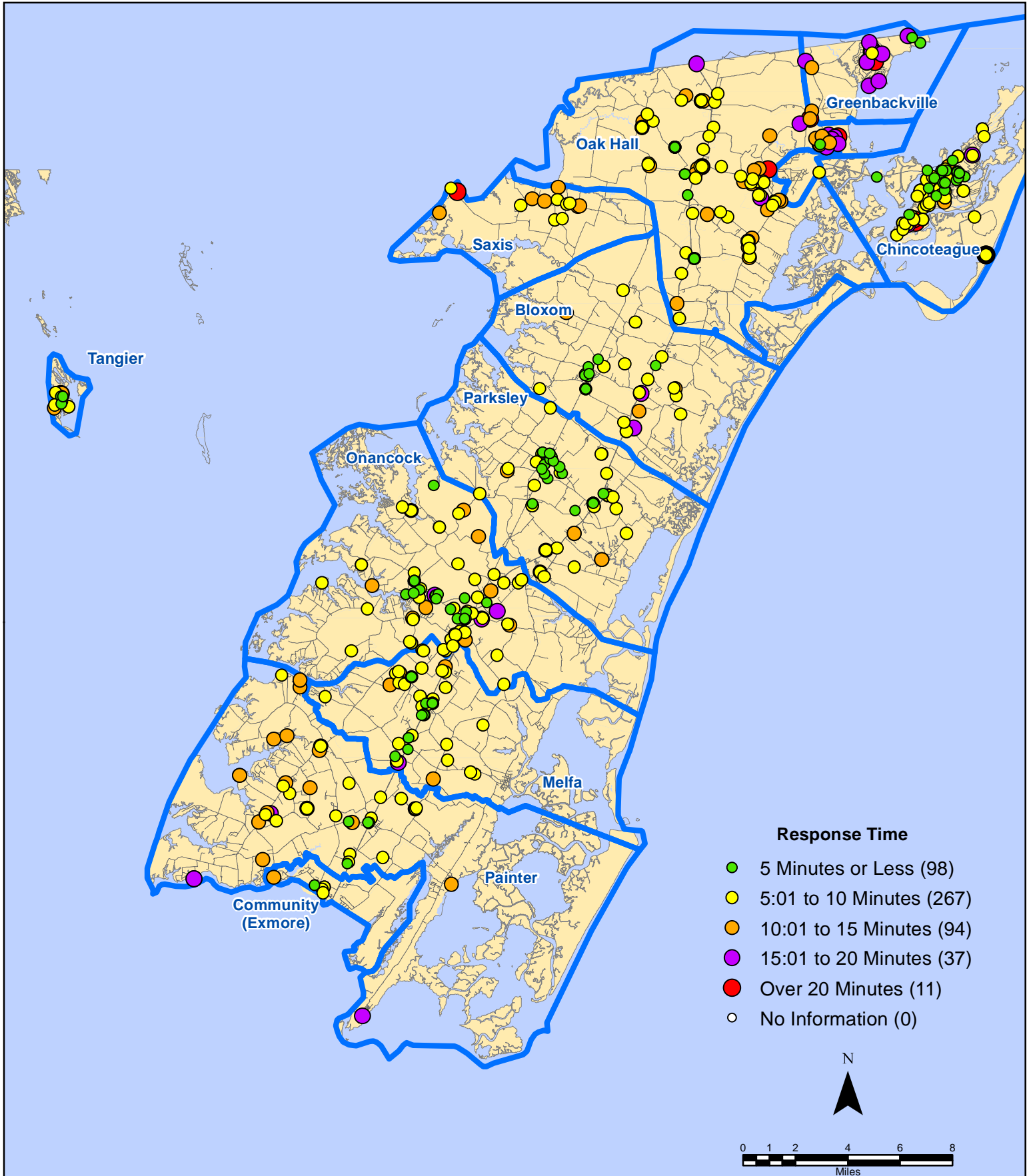
Map Prepared by the Accomack County Department of Building, Planning & Economic Development using data from the ESVA 911 Center - October 15, 2020

All points are plotted using X and Y coordinates provided by the ESVA 911 Center. Points may be plotted over one another when they are in close proximity.

July 2020 EMS Calls By Type



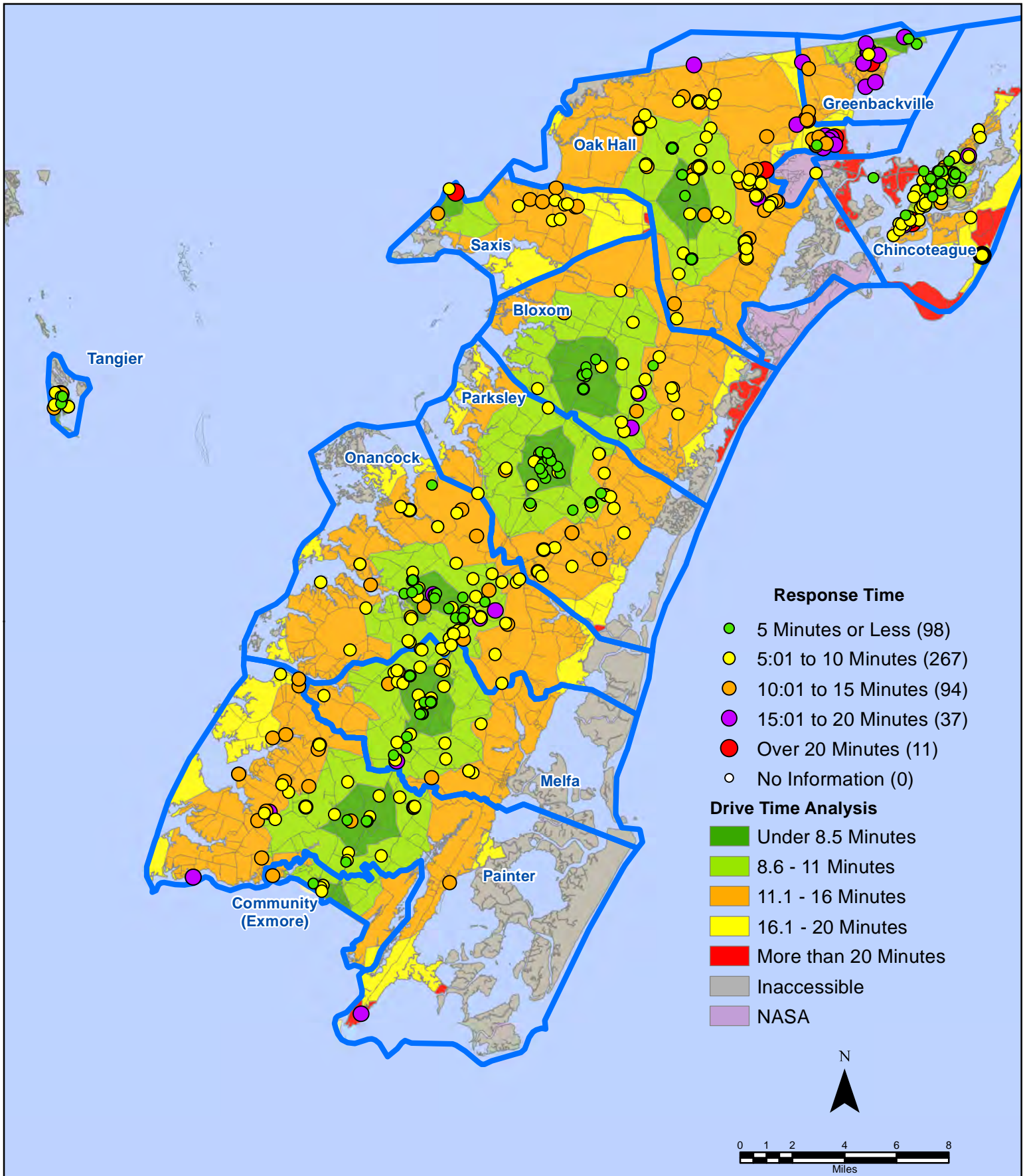
July 2020 EMS Calls By Response Time



All points are plotted using X and Y coordinates provided by the ESVA 911 Center.
Points may be plotted over one another when they are in close proximity.

Map Prepared by the Accomack County Department of Building, Planning & Economic Development using data from the ESVA 911 Center - October 15, 2020

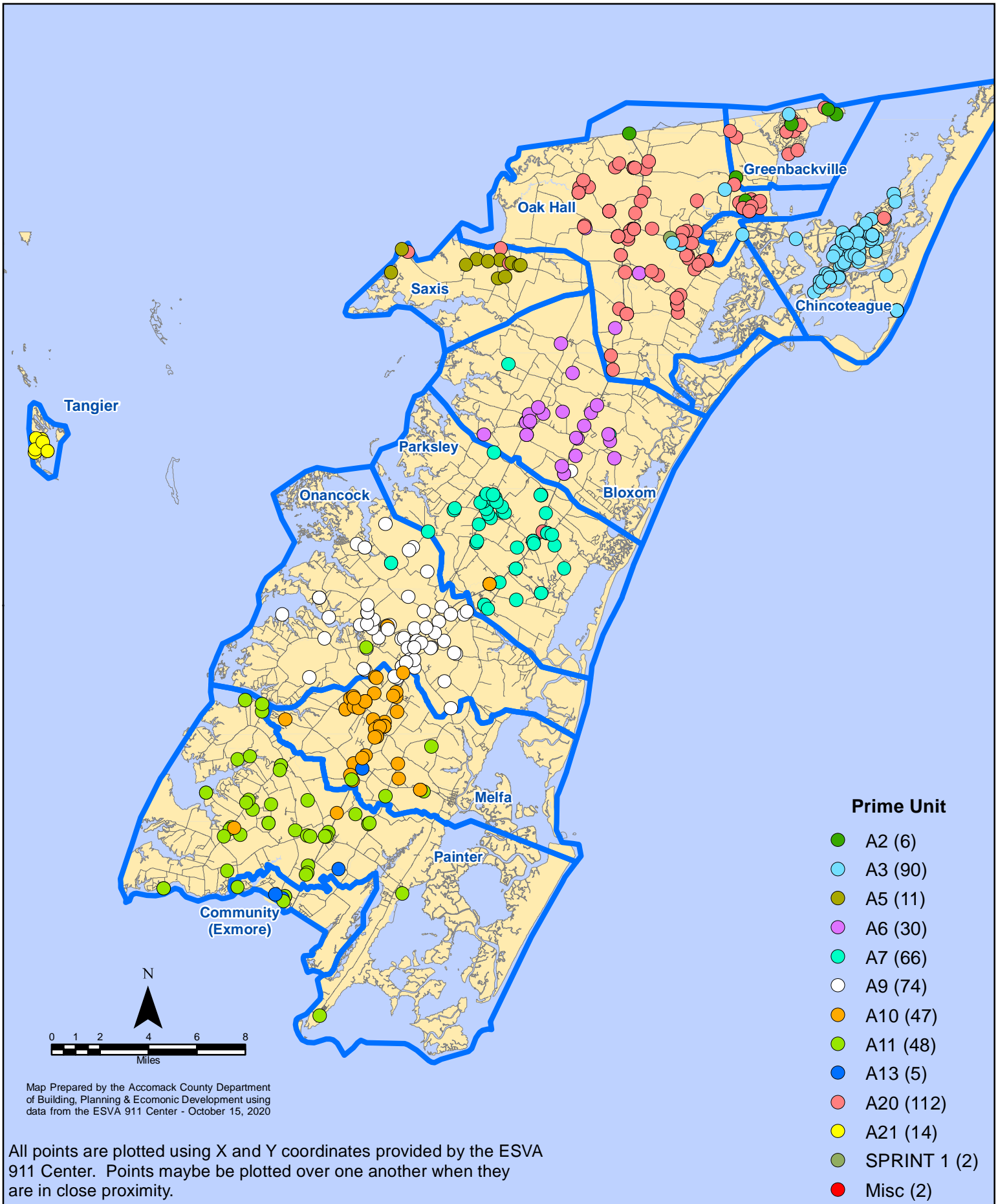
July 2020 EMS Calls By Response Time



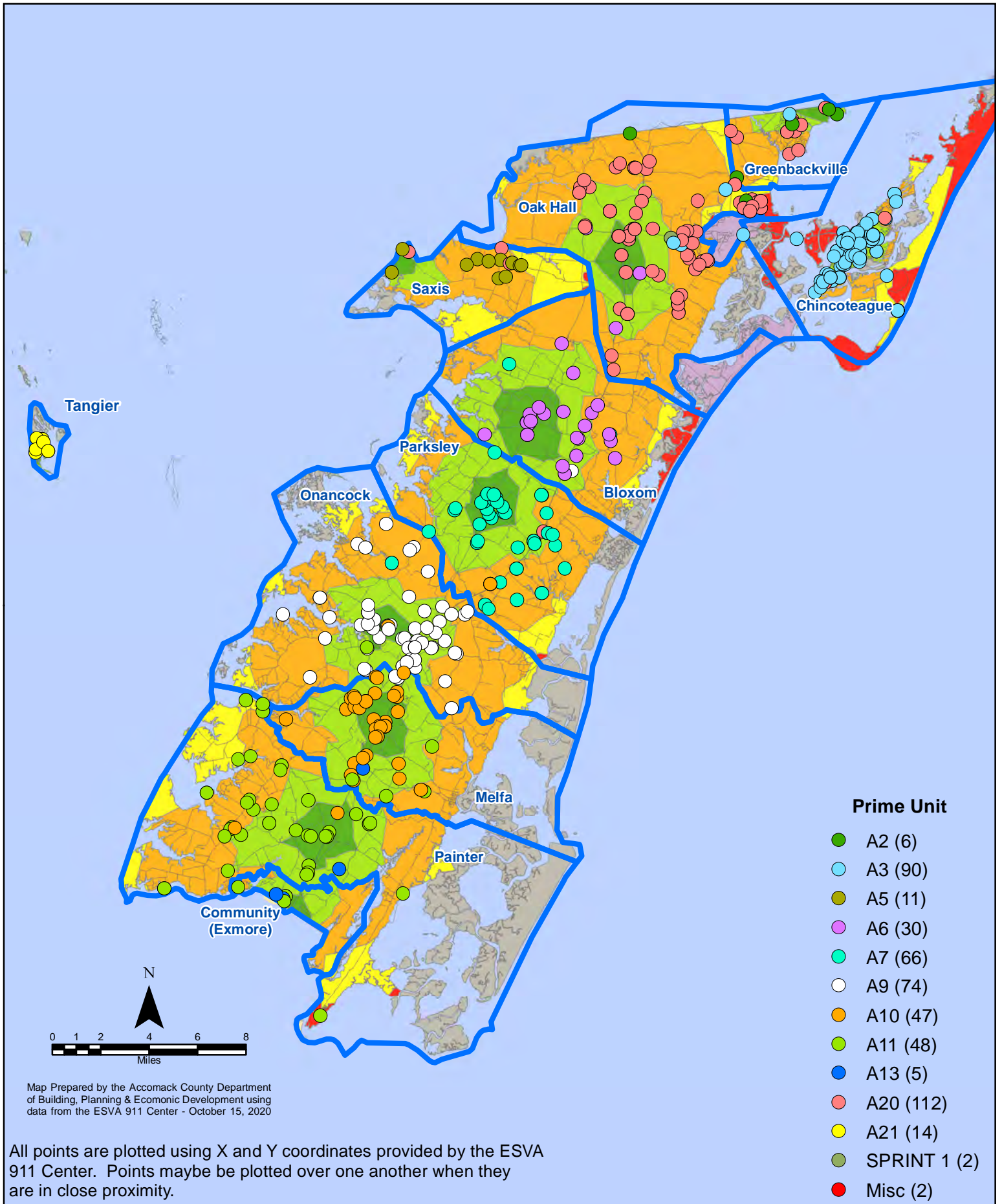
All points are plotted using X and Y coordinates provided by the ESVA 911 Center. Points may be plotted over one another when they are in close proximity.

Map Prepared by the Accomack County Department of Building, Planning & Economic Development using data from the ESVA 911 Center - October 15, 2020

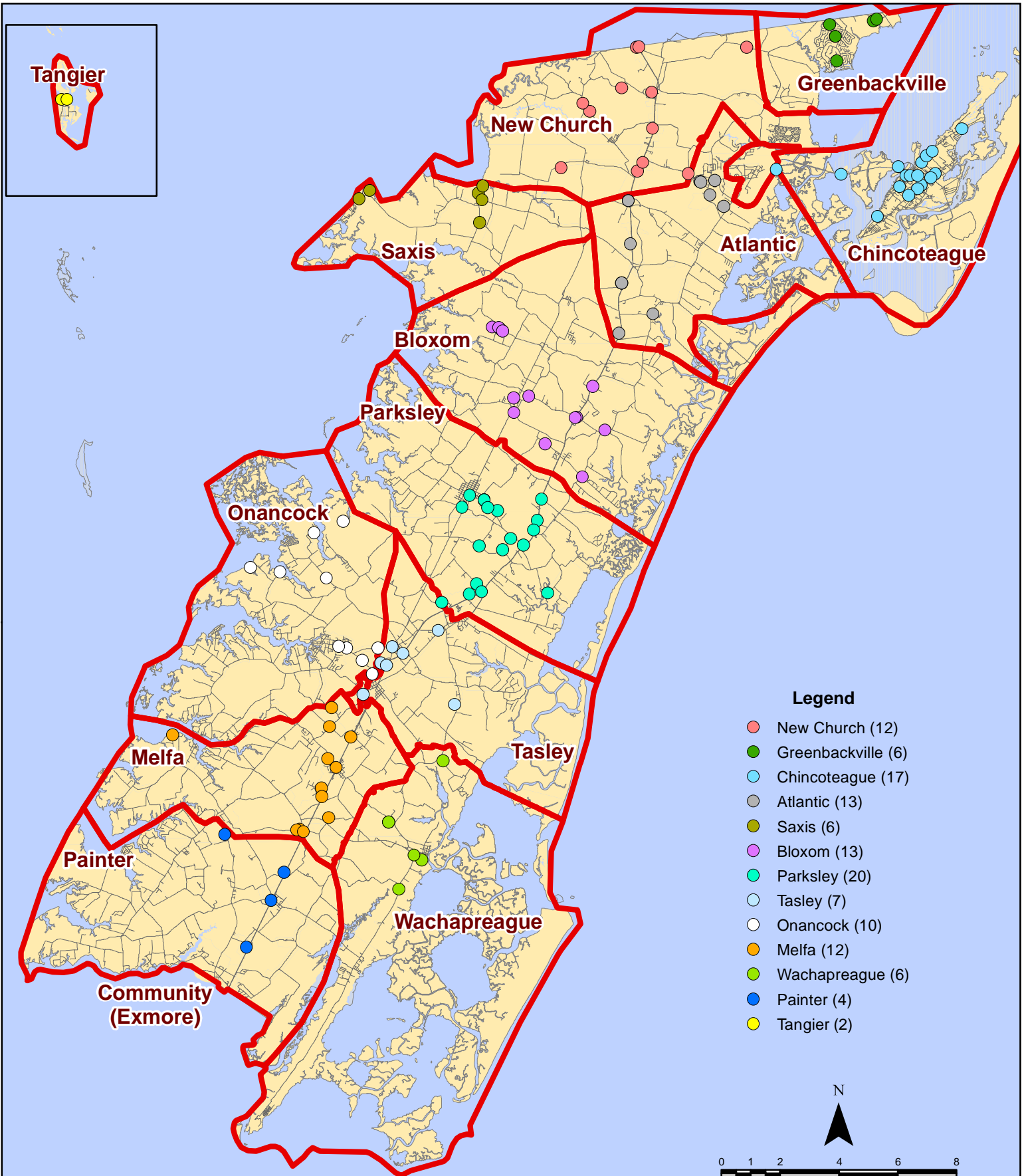
July 2020 EMS Calls By Prime Unit



July 2020 EMS Calls By Prime Unit



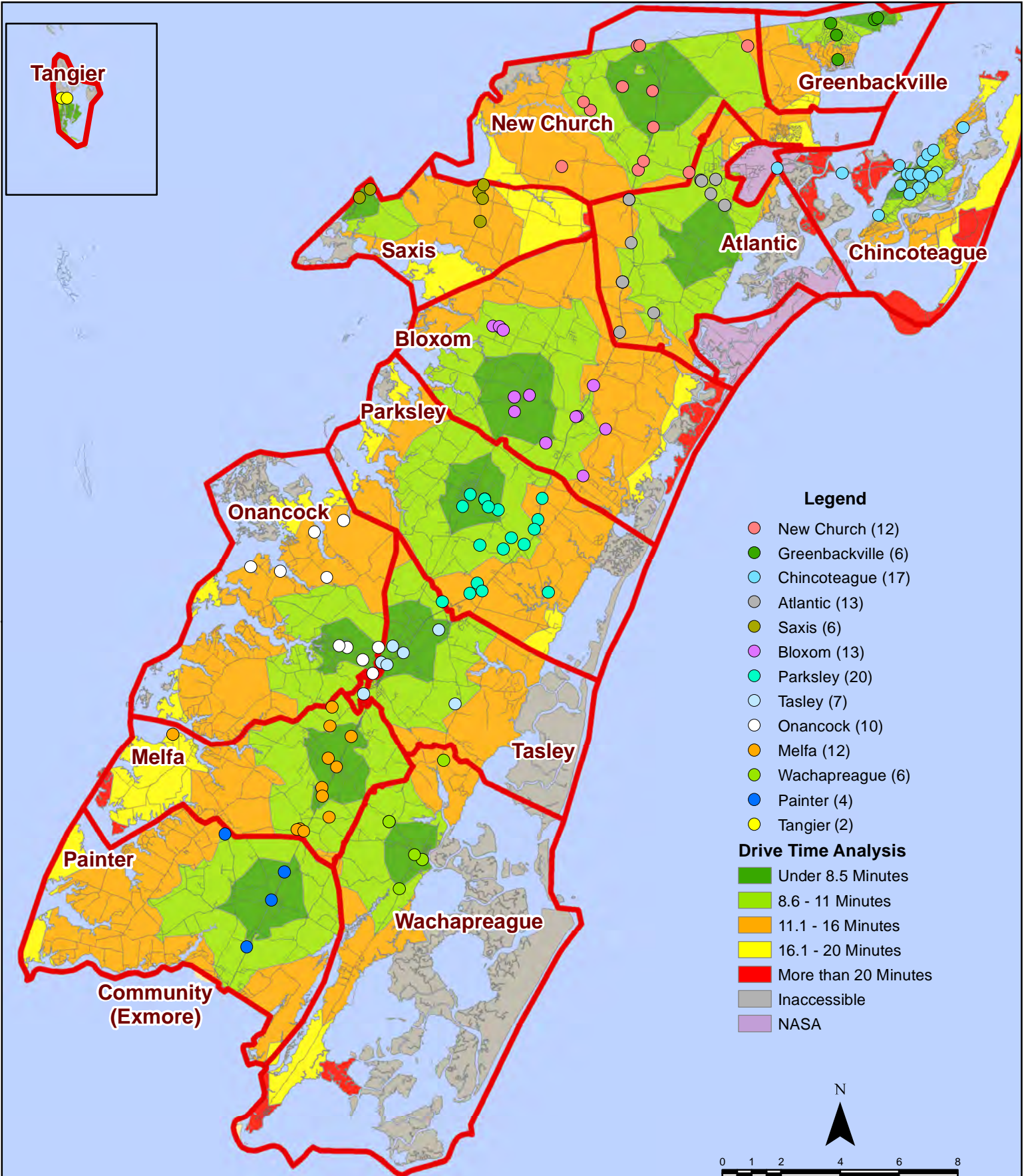
July 2020 Fire Calls By District



All points are plotted using X and Y coordinates provided by the ESVA 911 Center. Points may be plotted over one another when they are in close proximity.

Map Prepared by the Accomack County Department of Building, Planning & Economic Development using data from the ESVA 911 Center - October 13, 2020

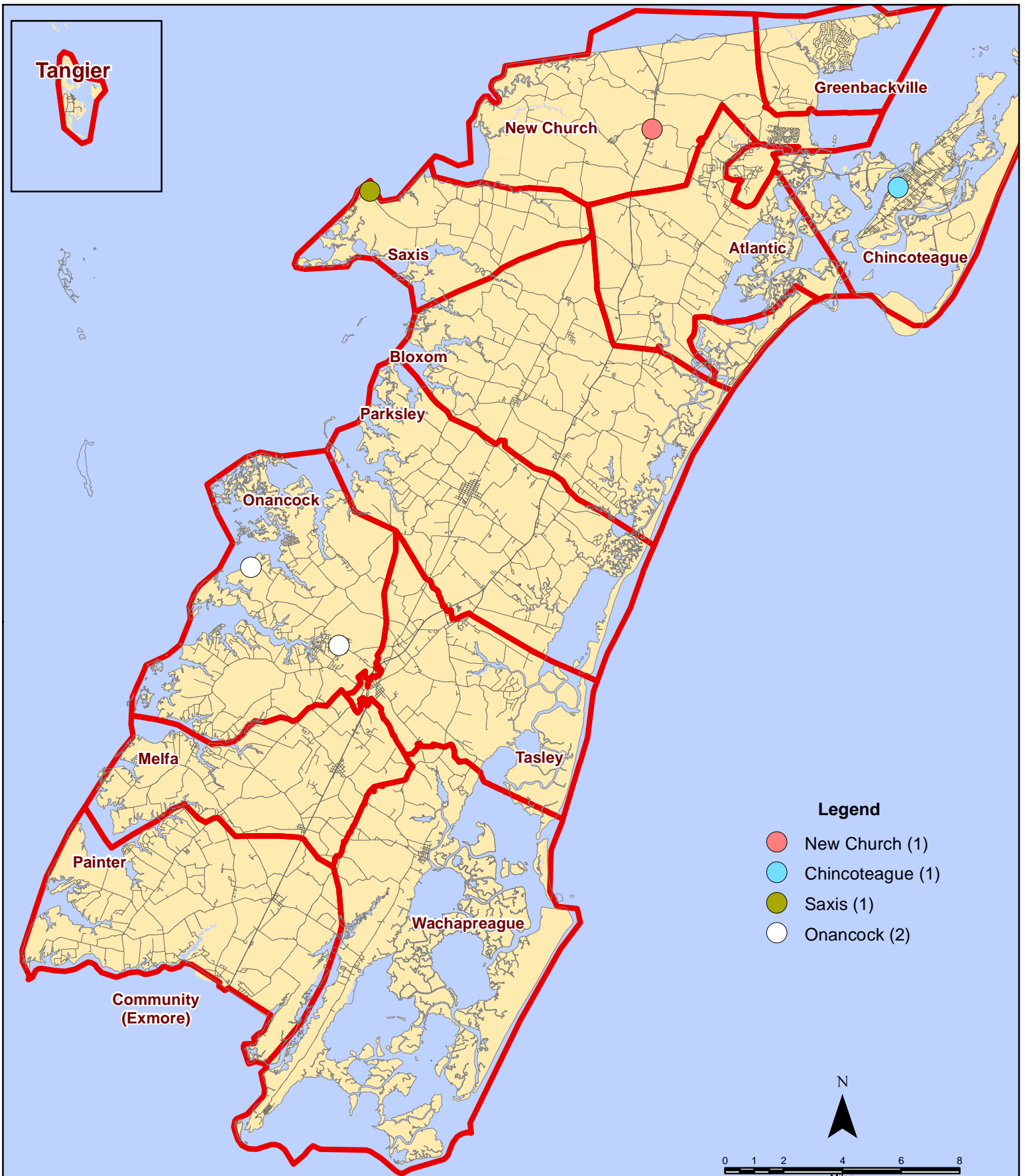
July 2020 Fire Calls By District



All points are plotted using X and Y coordinates provided by the ESVA 911 Center. Points may be plotted over one another when they are in close proximity.

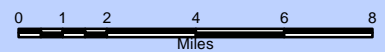
Map Prepared by the Accomack County Department of Building, Planning & Economic Development using data from the ESVA 911 Center - October 13, 2020

July 2020 Fire Calls With Response Time Greater Than 20 Mins.



Legend

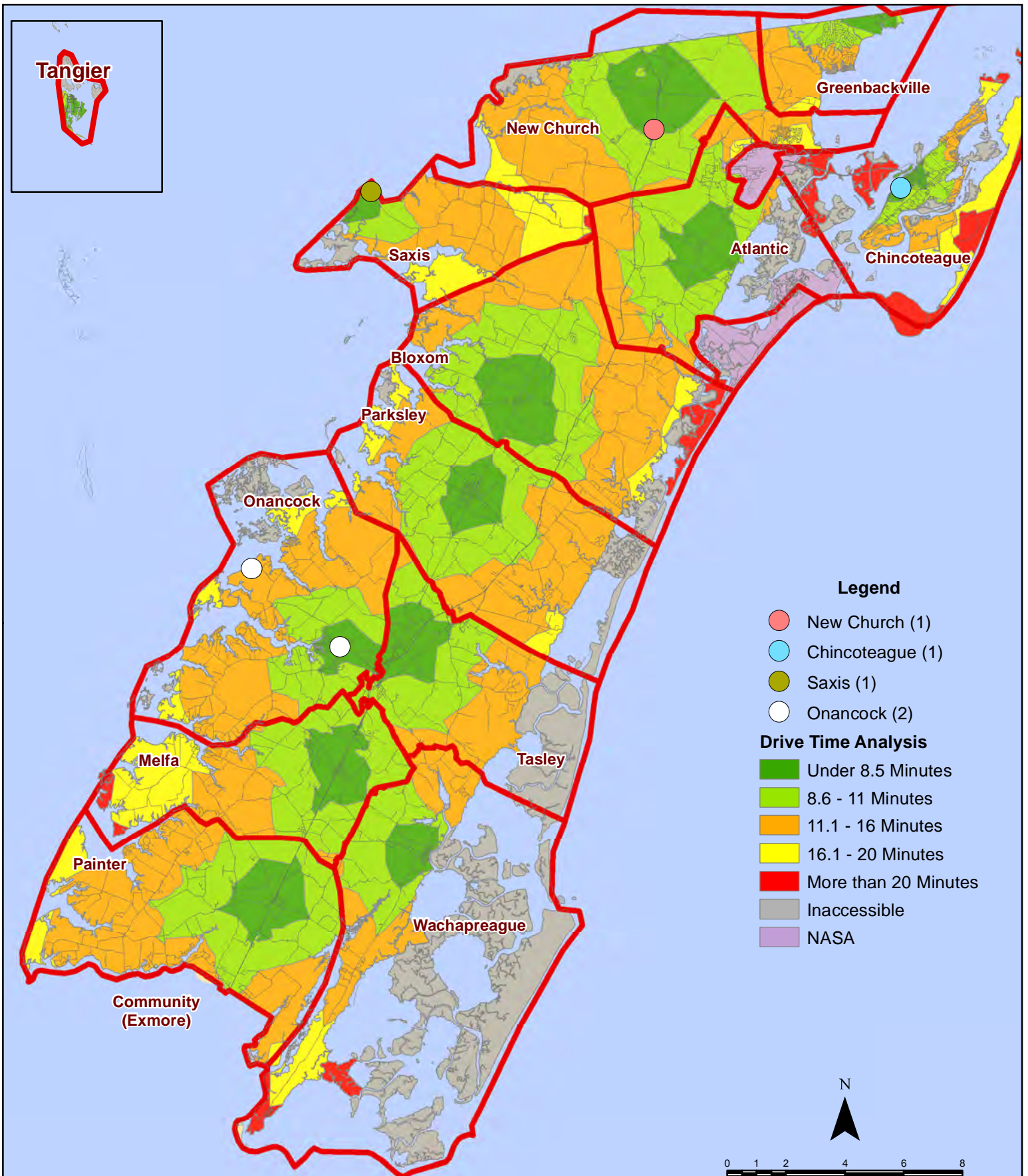
- New Church (1)
- Chincoteague (1)
- Saxis (1)
- Onancock (2)



All points are plotted using X and Y coordinates provided by the ESVA 911 Center. Points may be plotted over one another when they are in close proximity.

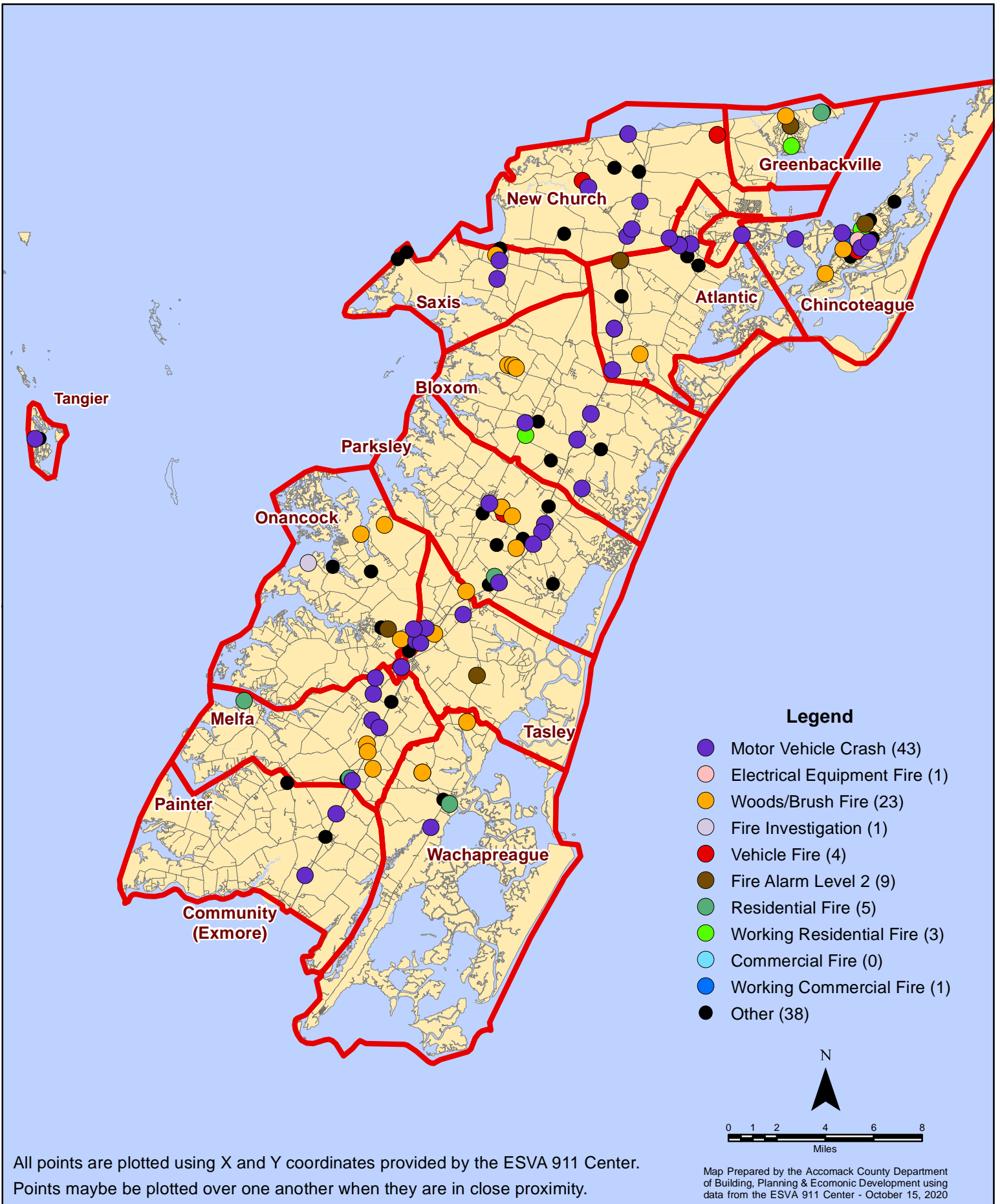
Map Prepared by the Accomack County Department of Building, Planning & Economic Development using data from the ESVA 911 Center - October 13, 2020

July 2020 Fire Calls With Response Time Greater Than 20 Mins.

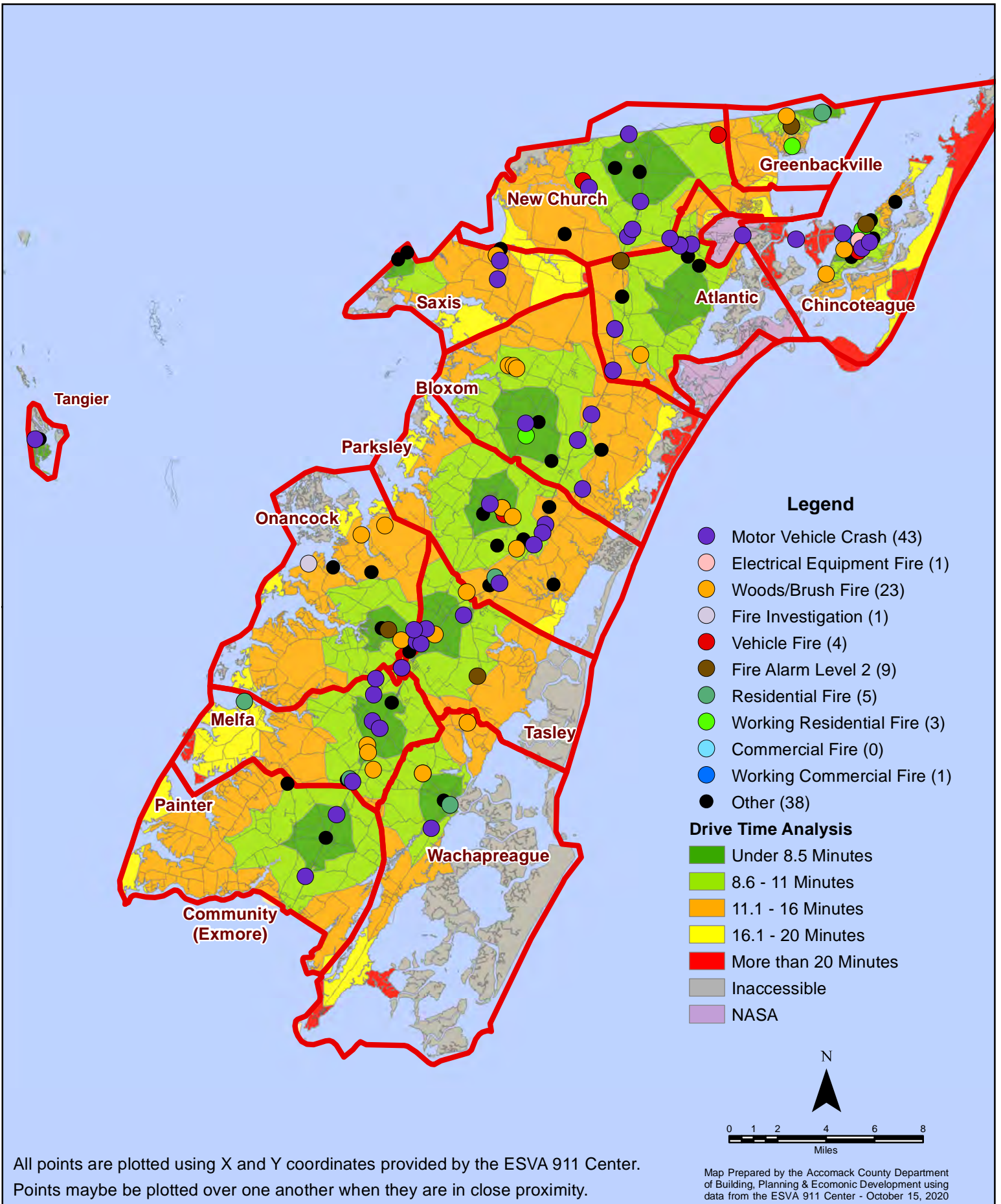


All points are plotted using X and Y coordinates provided by the ESVA 911 Center. Points maybe be plotted over one another when they are in close proximity.

July 2020 Fire Calls By Type



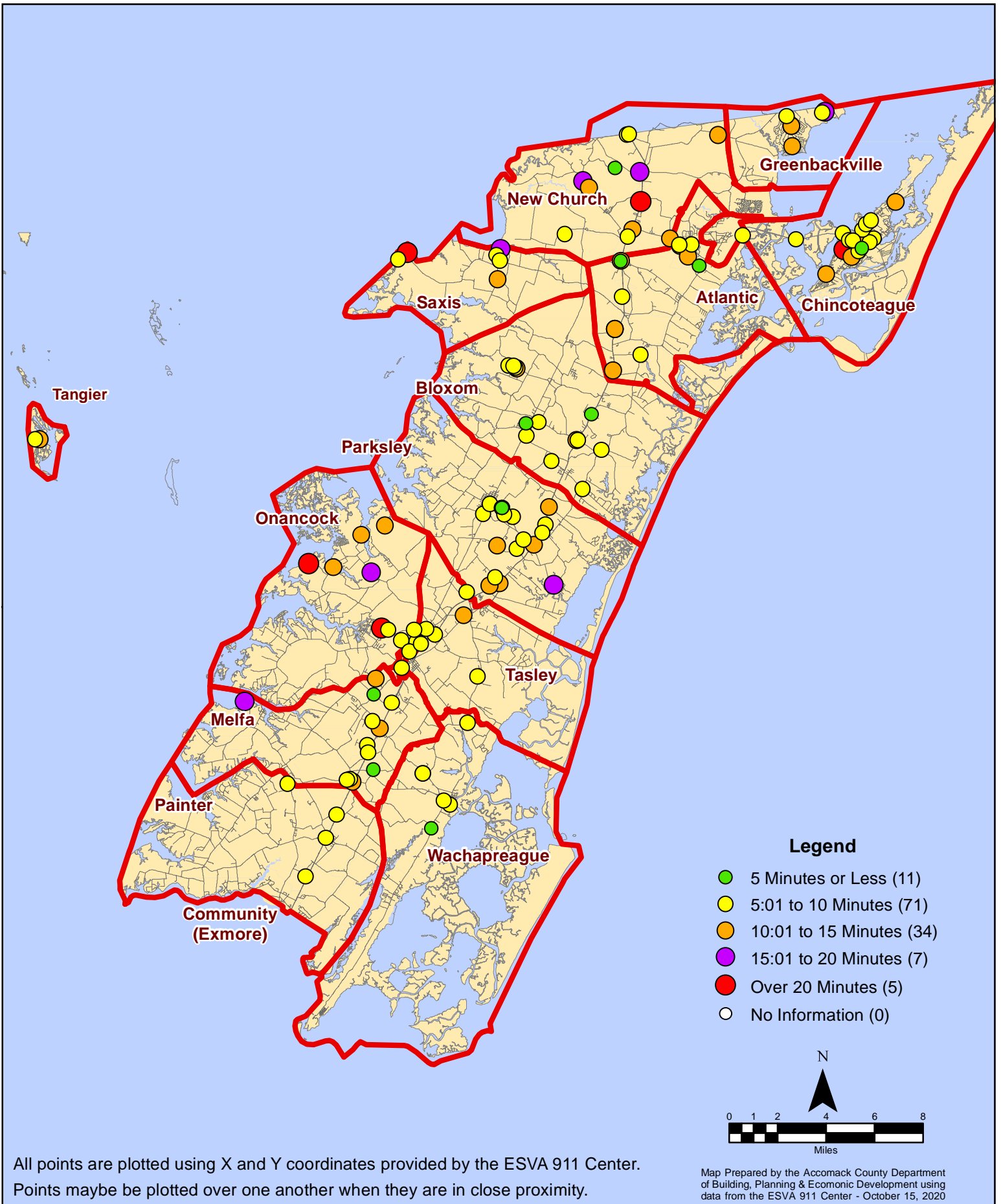
July 2020 Fire Calls By Type



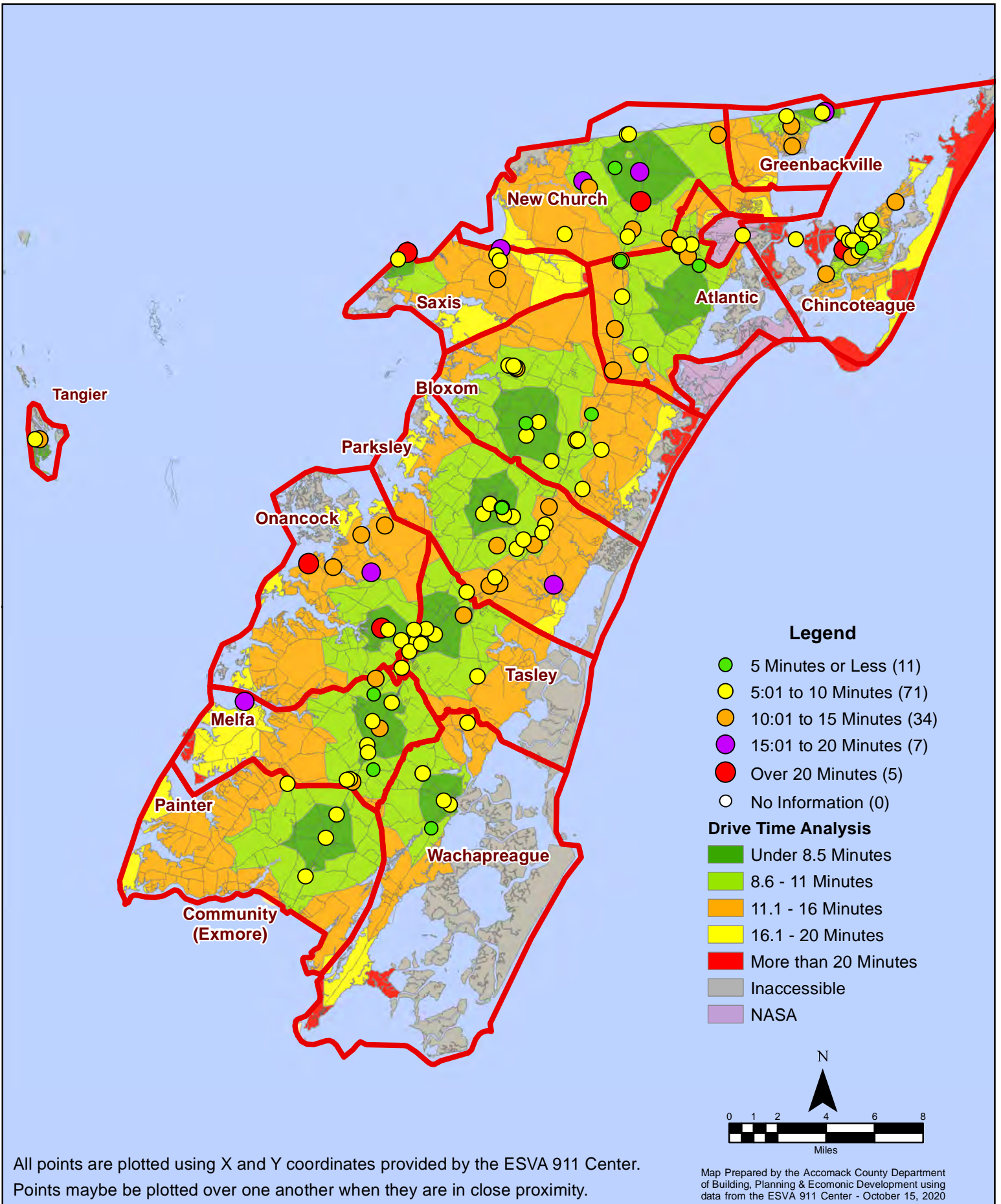
All points are plotted using X and Y coordinates provided by the ESVA 911 Center. Points may be plotted over one another when they are in close proximity.

Map Prepared by the Accomack County Department of Building, Planning & Economic Development using data from the ESVA 911 Center - October 15, 2020

July 2020 Fire Calls By Response Time



July 2020 Fire Calls By Response Time



All points are plotted using X and Y coordinates provided by the ESVA 911 Center. Points may be plotted over one another when they are in close proximity.

Map Prepared by the Accomack County Department of Building, Planning & Economic Development using data from the ESVA 911 Center - October 15, 2020