

August 2020

Fire - Performance Measure Data *					
Response District	Total Calls in District	Greater than 20 min. Response Time	Longest Response Time	Calls Handled by other agency	Overall Station Benchmark %
New Church	23	0	0:17:02	1	100.0%
Greenbackville	11	0	0:12:16	1	100.0%
Chincoteague	11	0	0:15:40	0	100.0%
Atlantic	16	1	0:21:12	2	93.8%
Saxis	2	0	0:17:43	0	100.0%
Bloxom	15	0	0:13:57	1	100.0%
Parksley	32	0	0:19:52	1	100.0%
Tasley	14	0	0:14:46	1	100.0%
Onancock	11	1	0:36:44	0	90.9%
Melfa	12	0	0:12:55	2	100.0%
Wachapreague	2	0	0:04:51	0	100.0%
Painter	14	1	0:22:04	1	92.9%
Tangier					#DIV/0!
System Totals	163	3	0:36:44	10	98.2%

EMS - Performance Measure Data						
Response District	Total Calls in District	Greater than 20 min. Response Time	Longest Response Time	Calls Handled by other agency	Station Benchmark Compliance %	Overall Station Reliability %
Greenbackville	22	7	0:23:10	15	68.2%	31.8%
Chincoteague	88	2	0:26:36	9	97.7%	89.8%
Saxis	10	0	0:19:35	4	100.0%	60.0%
Bloxom	47	0	0:14:21	3	100.0%	93.6%
Parksley	93	2	0:20:05	3	97.8%	96.8%
Onancock	80	0	0:15:43	1	100.0%	98.8%
Melfa	54	1	0:22:23	10	98.1%	81.5%
Wachapreague (Painter)	41	2	0:36:26	6	95.1%	85.4%
Oak Hall	89	1	0:20:39	12	98.9%	86.5%
Tangier	12	1	0:36:01	0	91.7%	100.0%
Community (Exmore)	9	0	0:18:14	3	100.0%	66.7%
System Totals	545	16	0:36:26	66	97.1%	87.9%

EMS Mutual Aid Data															
	Station Giving Aid														
	Greenbackville	Chincoteague	Saxis	Bloxom	Parksley	Onancock	Melfa	Wachapreague/Painter	Oak Hall	Community (Exmore)	Northampton	Wallops	NORS	2nd Call	3rd Call
Greenbackville		2	1	1					11				15		
Chincoteague				1	1				6			1		8	1
Saxis					1				3				4		
Bloxom					3								2	1	
Parksley				2		1							1	2	
Onancock							1							1	
Melfa						4		6					9	1	
Wachapreague (Painter)							5		1				4	2	
Oak Hall		3	3	6										12	
Community (Exmore)								3					2	1	
Northampton Co.															
Wallops														1	
Totals	0	5	4	10	5	5	6	9	20	1	0	1	37	28	1

Transport Destination			
Hospital Destination by Unit	Riverside - Shore Memorial	PRMC	Other
Chincoteague	19	30	
Saxis	6	5	
Bloxom	30	2	
Parksley	60		
Onancock	52		
Melfa	27		
Wachapreague (Painter)	26		
Oak Hall	42	20	2
Wallops			1
Totals	262	58	3

Benchmark = The Accomack County Board of Supervisors established a 20 minute standard for emergency response.

NORS = No Response by station or the call was handled by another station or agency.

2nd Call = 2nd ambulance call received while first ambulance was on another call.

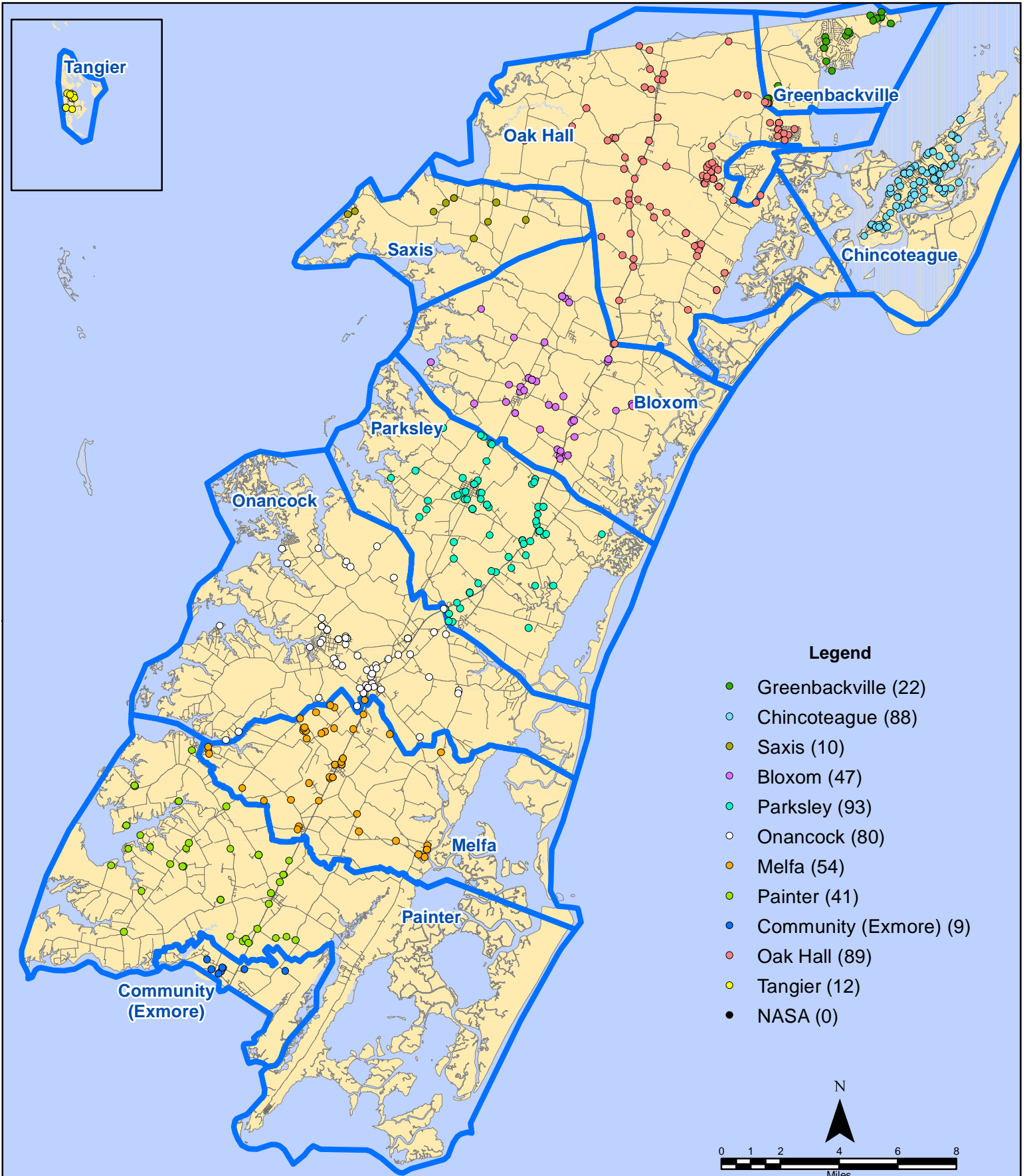
3rd Call = 3rd ambulance call received while first & second ambulances were on other calls.

* This data excludes F1 Med (Medical Assist) calls in the Fire Data.

This information was prepared using data supplied by the Eastern Shore of Virginia 911 Center. This information is original incident data only and may not be representative of all units and/or stations who responded to an incident.

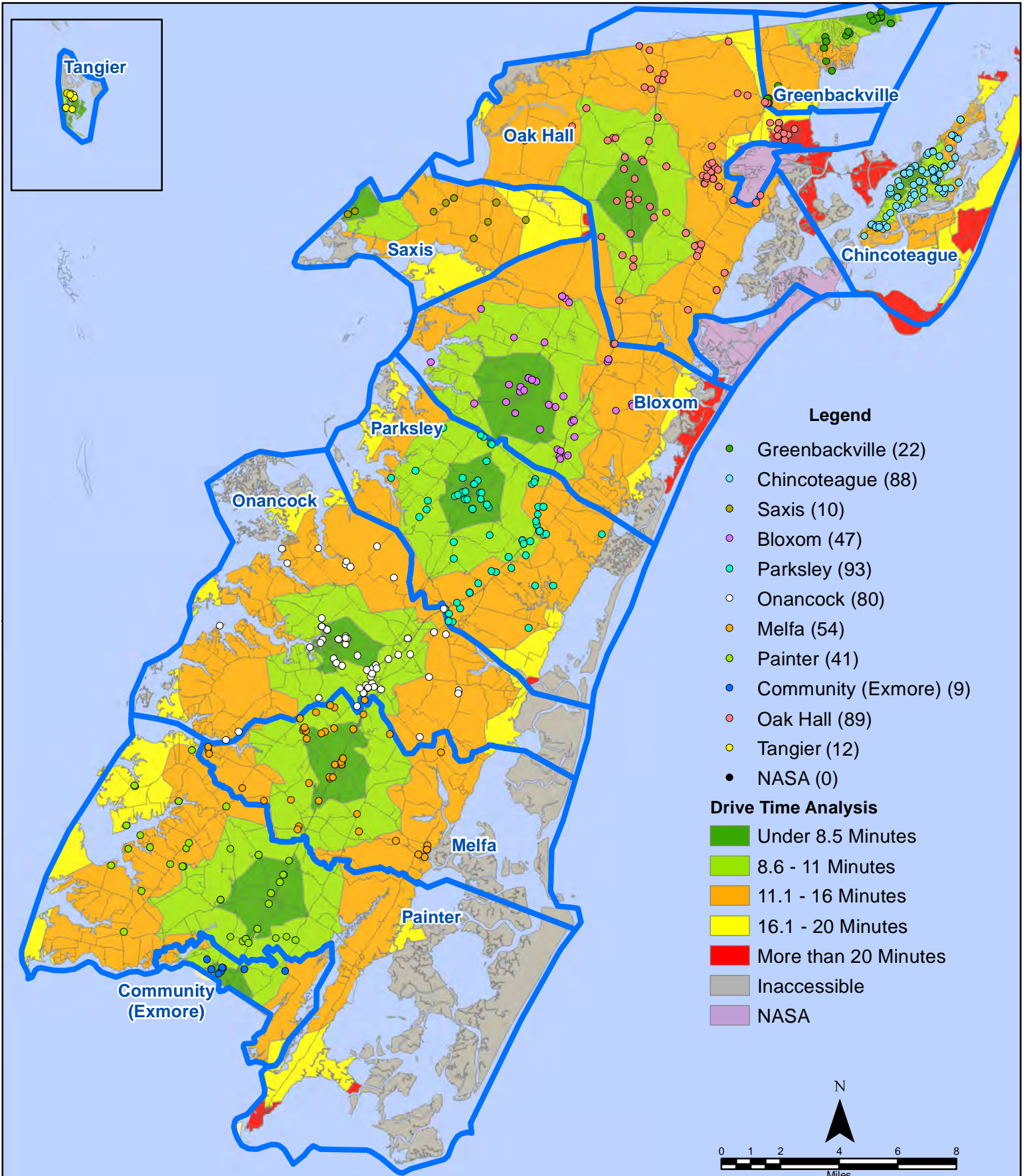
Station Receiving Aid

August 2020 EMS Calls By District

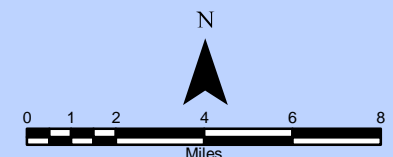


All points are plotted using X and Y coordinates provided by the ESVA 911 Center.
Points may be plotted over one another when they are in close proximity.

August 2020 EMS Calls By District

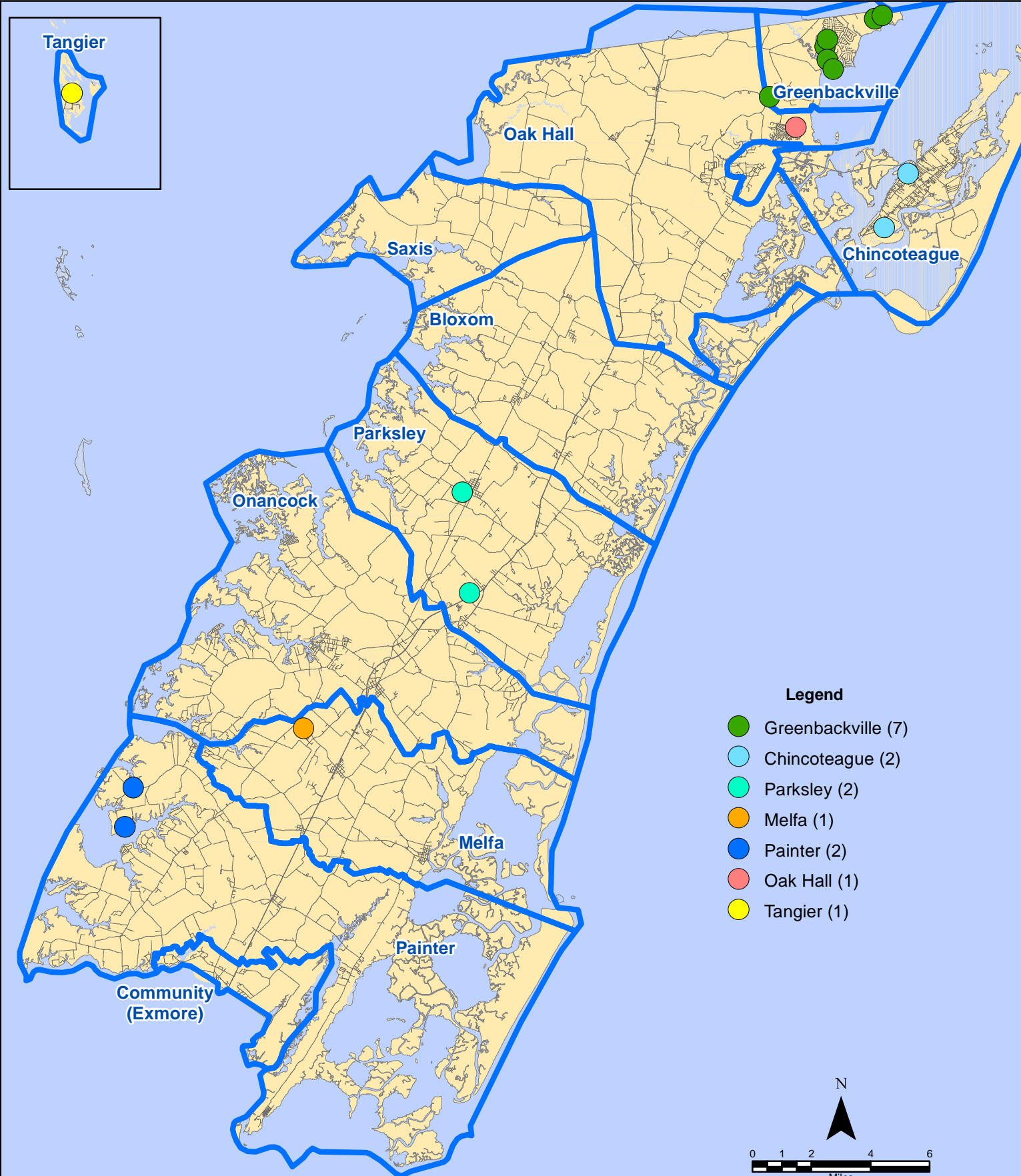


All points are plotted using X and Y coordinates provided by the ESVA 911 Center. Points may be plotted over one another when they are in close proximity.



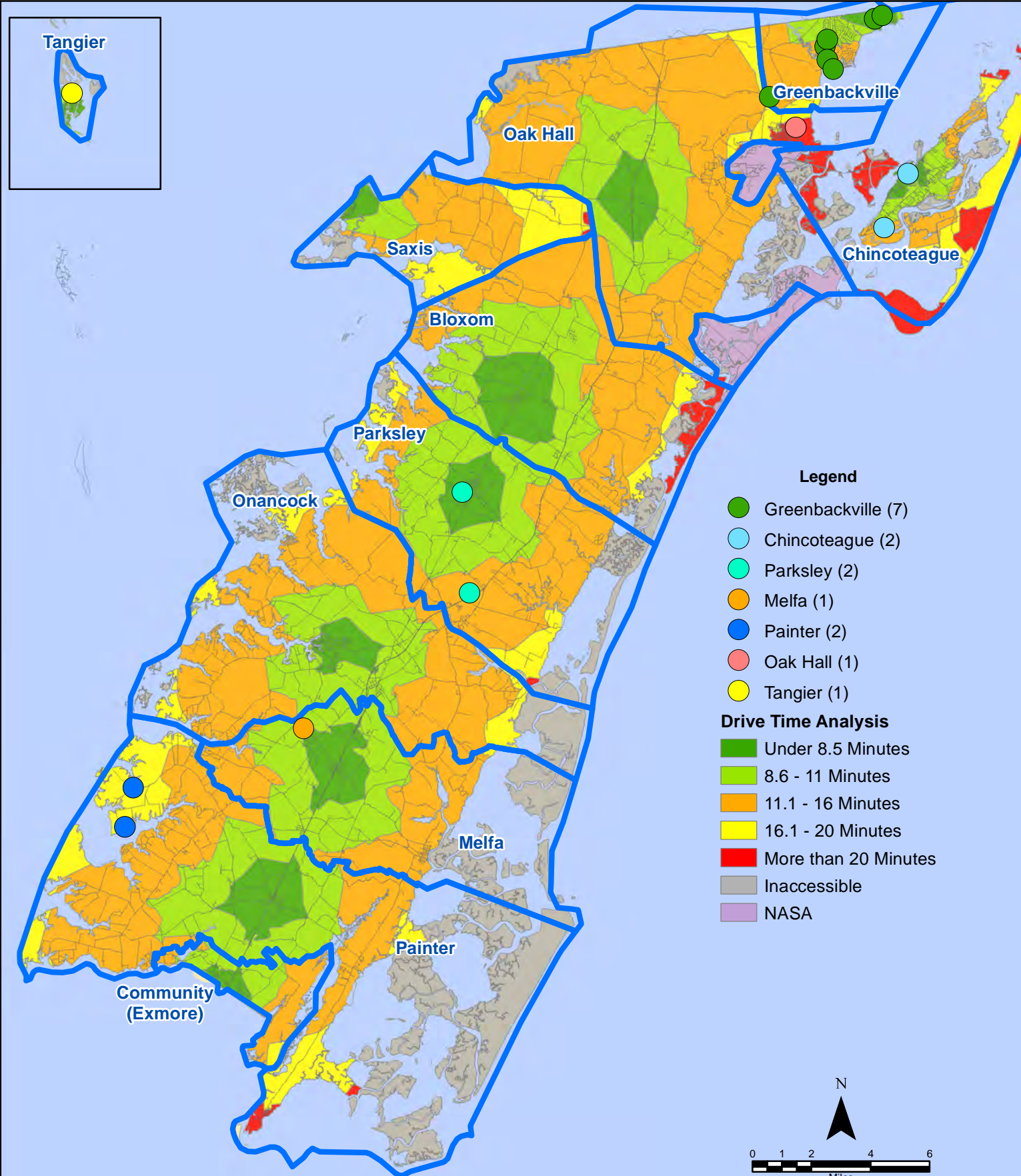
Map Prepared by the Accomack County Department of Building, Planning & Economic Development using data from the ESVA 911 Center - November 9, 2020

August 2020 EMS Calls With Response Time Greater Than 20 Mins.



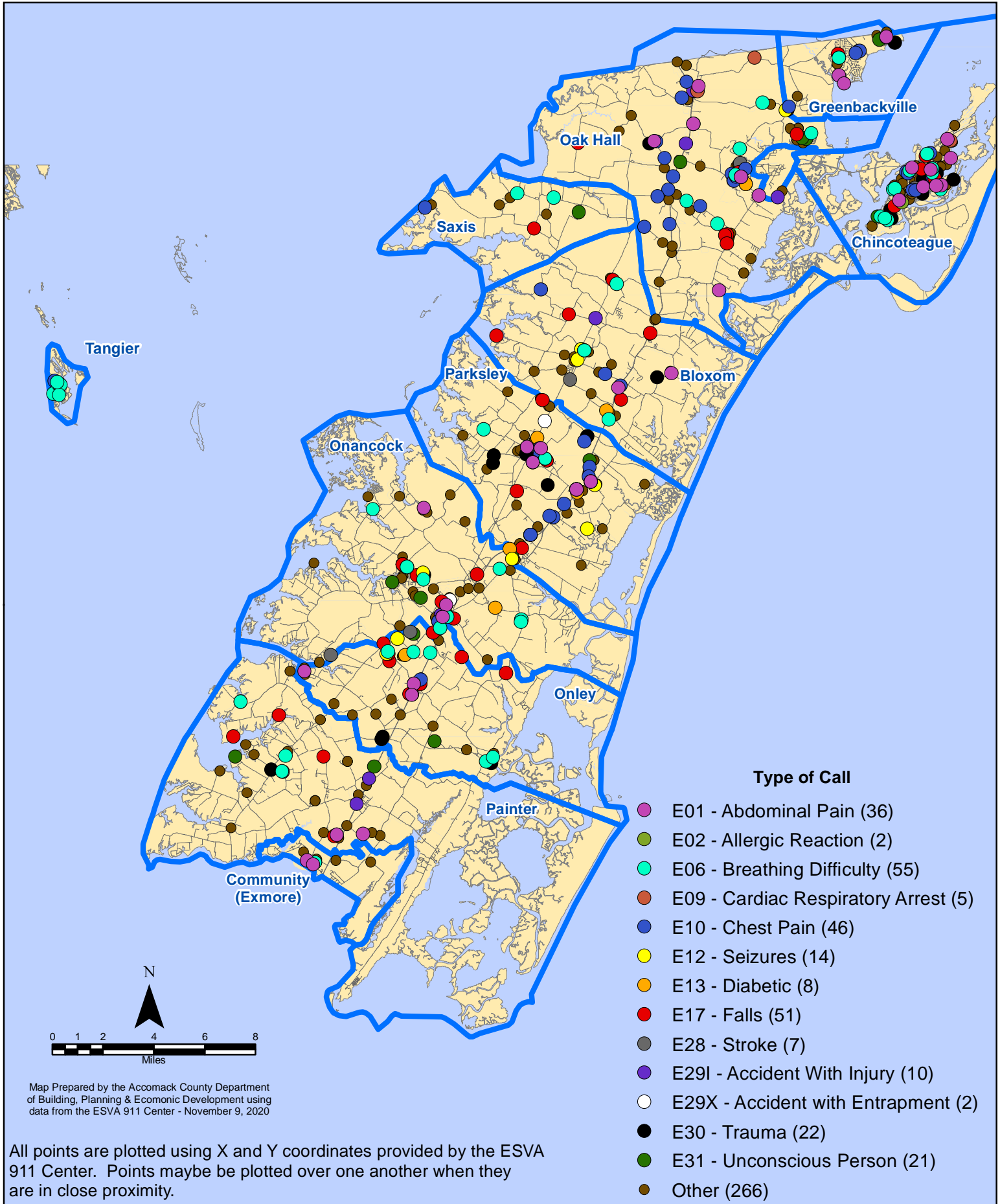
All points are plotted using X and Y coordinates provided by the ESVA 911 Center. Points may be plotted over one another when they are in close proximity.

August 2020 EMS Calls With Response Time Greater Than 20 Mins.

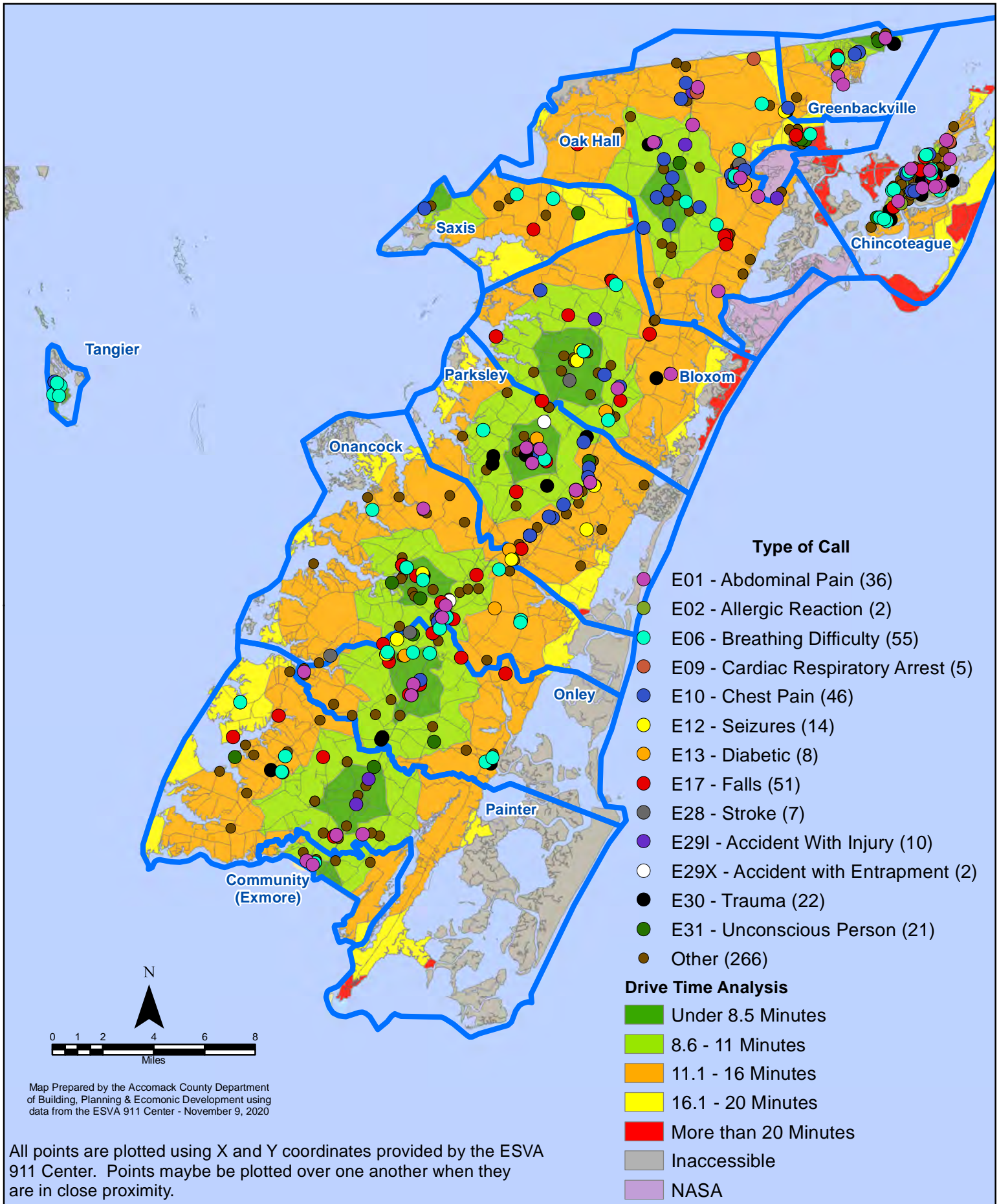


All points are plotted using X and Y coordinates provided by the ESVA 911 Center. Points may be plotted over one another when they are in close proximity.

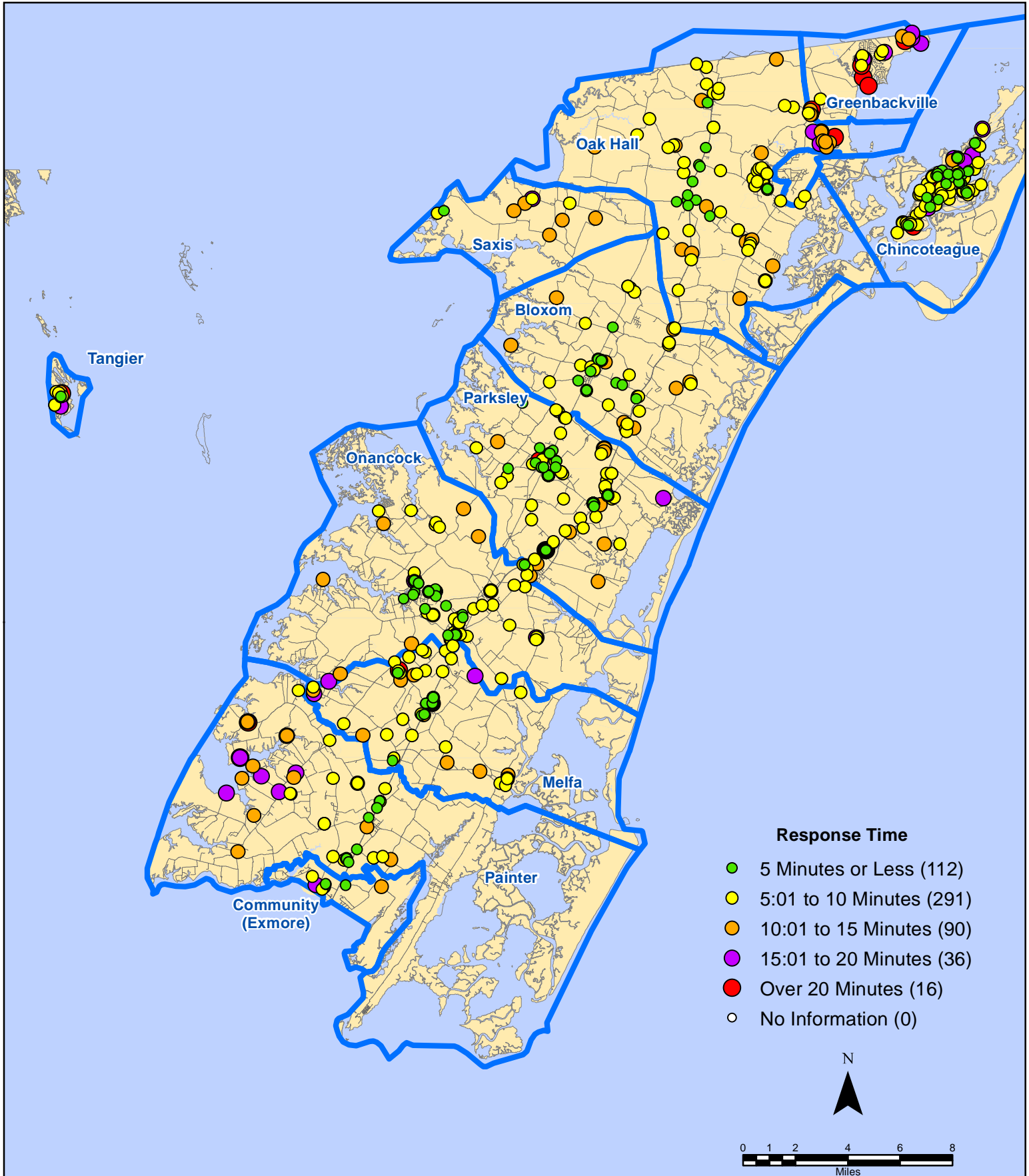
August 2020 EMS Calls By Type



August 2020 EMS Calls By Type



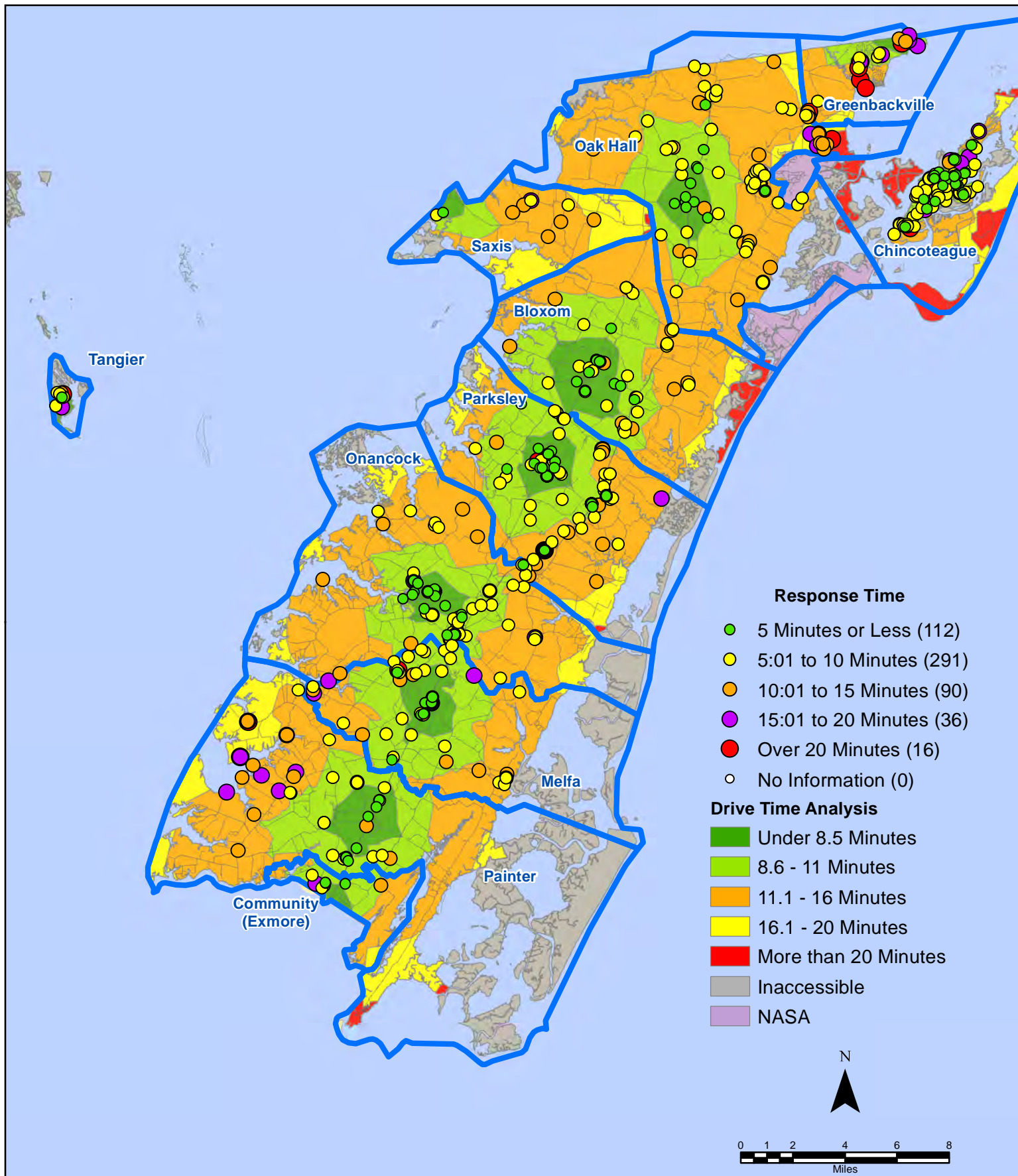
August 2020 EMS Calls By Response Time



All points are plotted using X and Y coordinates provided by the ESVA 911 Center.
Points may be plotted over one another when they are in close proximity.

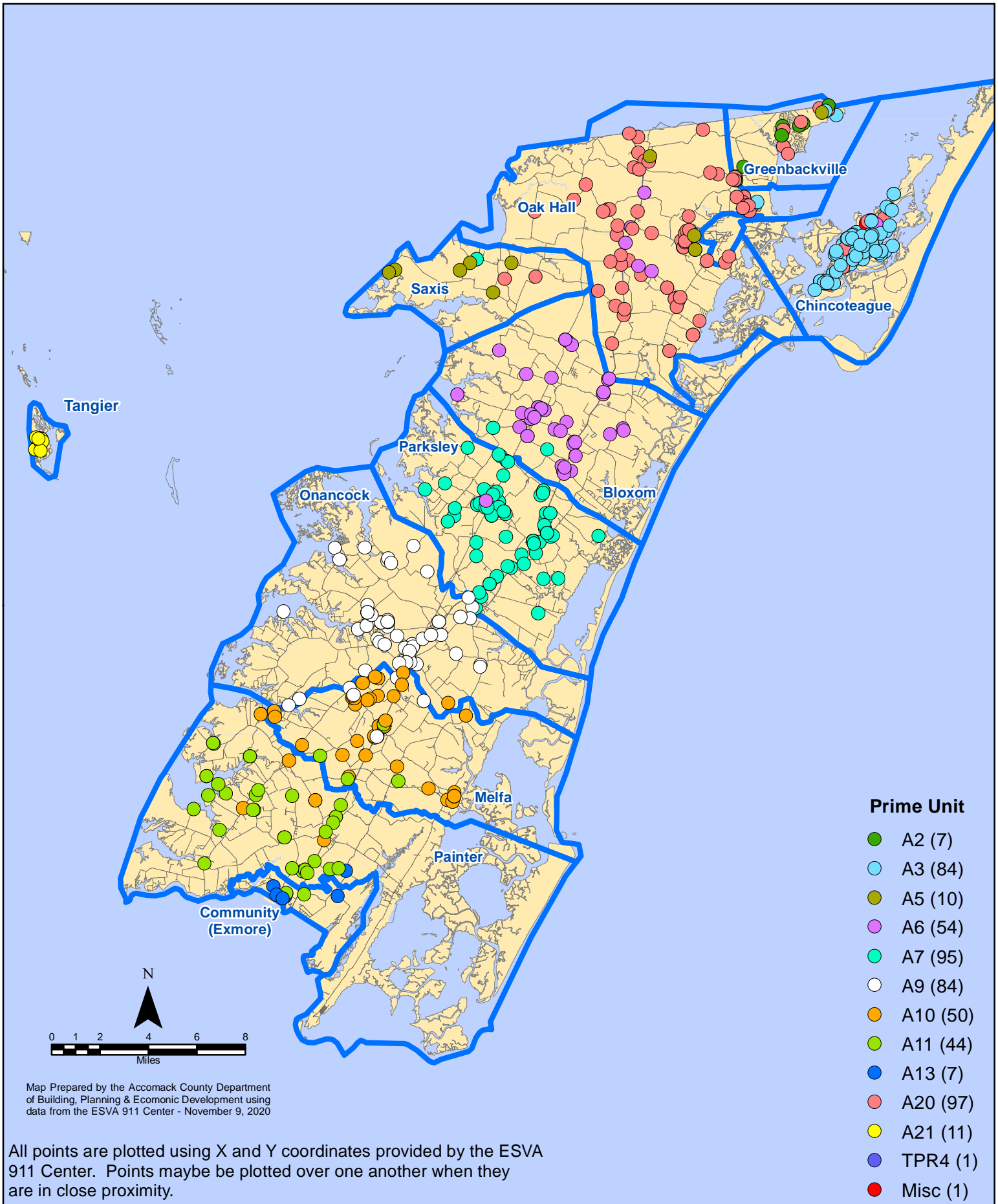
Map Prepared by the Accomack County Department of Building, Planning & Economic Development using data from the ESVA 911 Center - November 9, 2020

August 2020 EMS Calls By Response Time

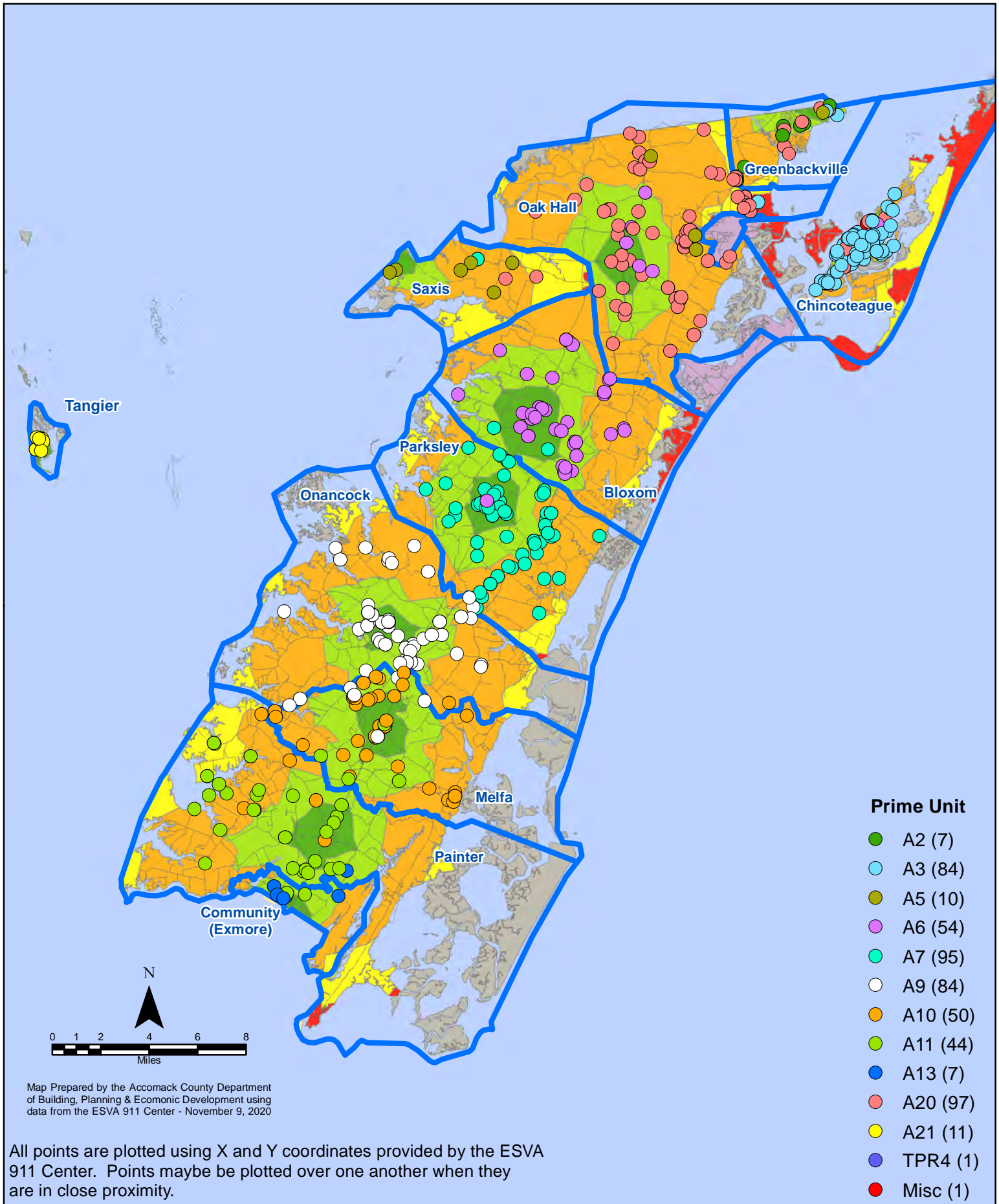


All points are plotted using X and Y coordinates provided by the ESVA 911 Center. Points may be plotted over one another when they are in close proximity.

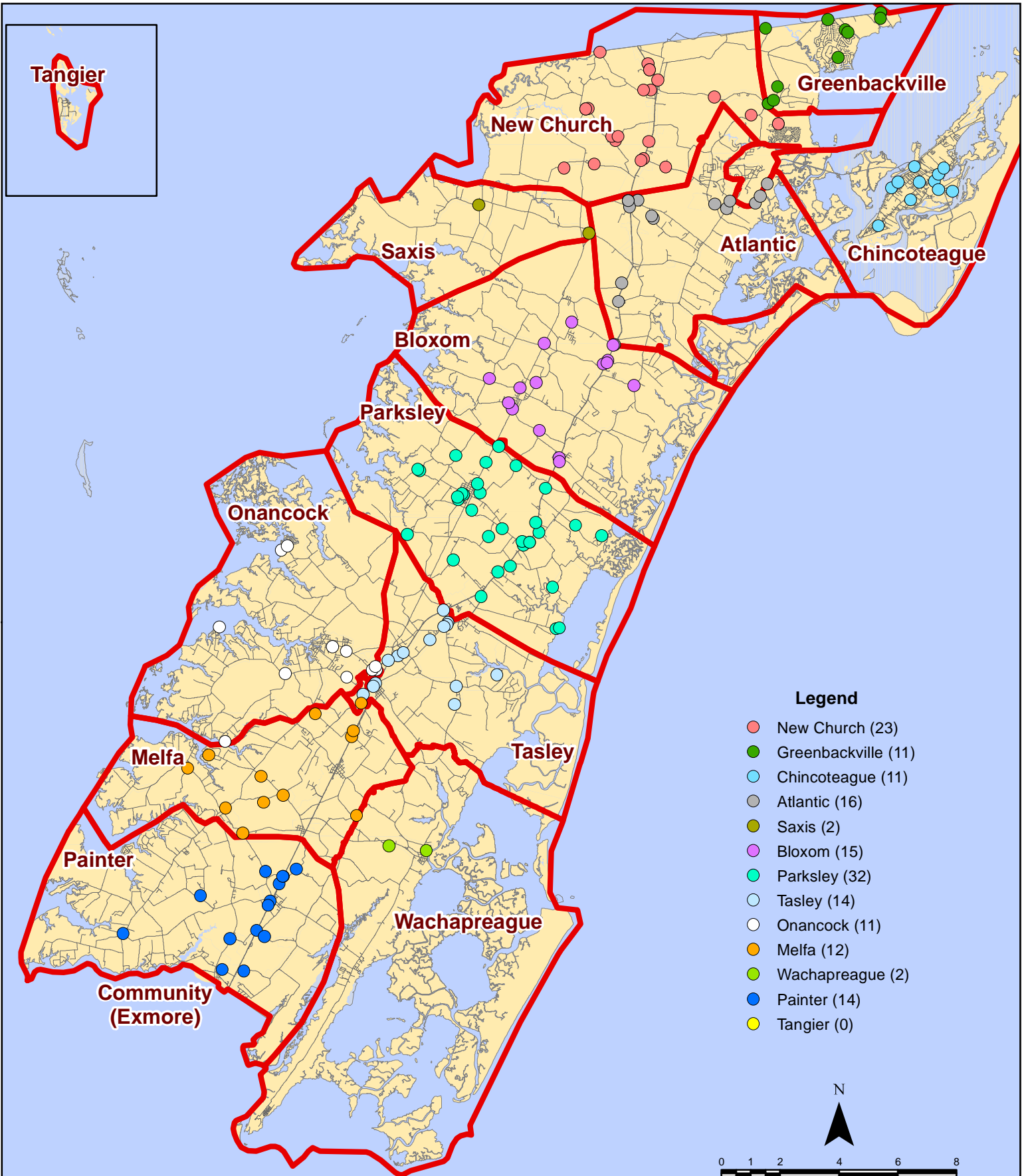
August 2020 EMS Calls By Prime Unit



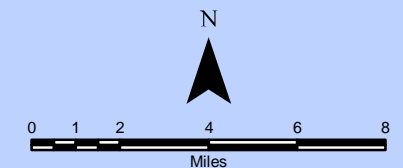
August 2020 EMS Calls By Prime Unit



August 2020 Fire Calls By District

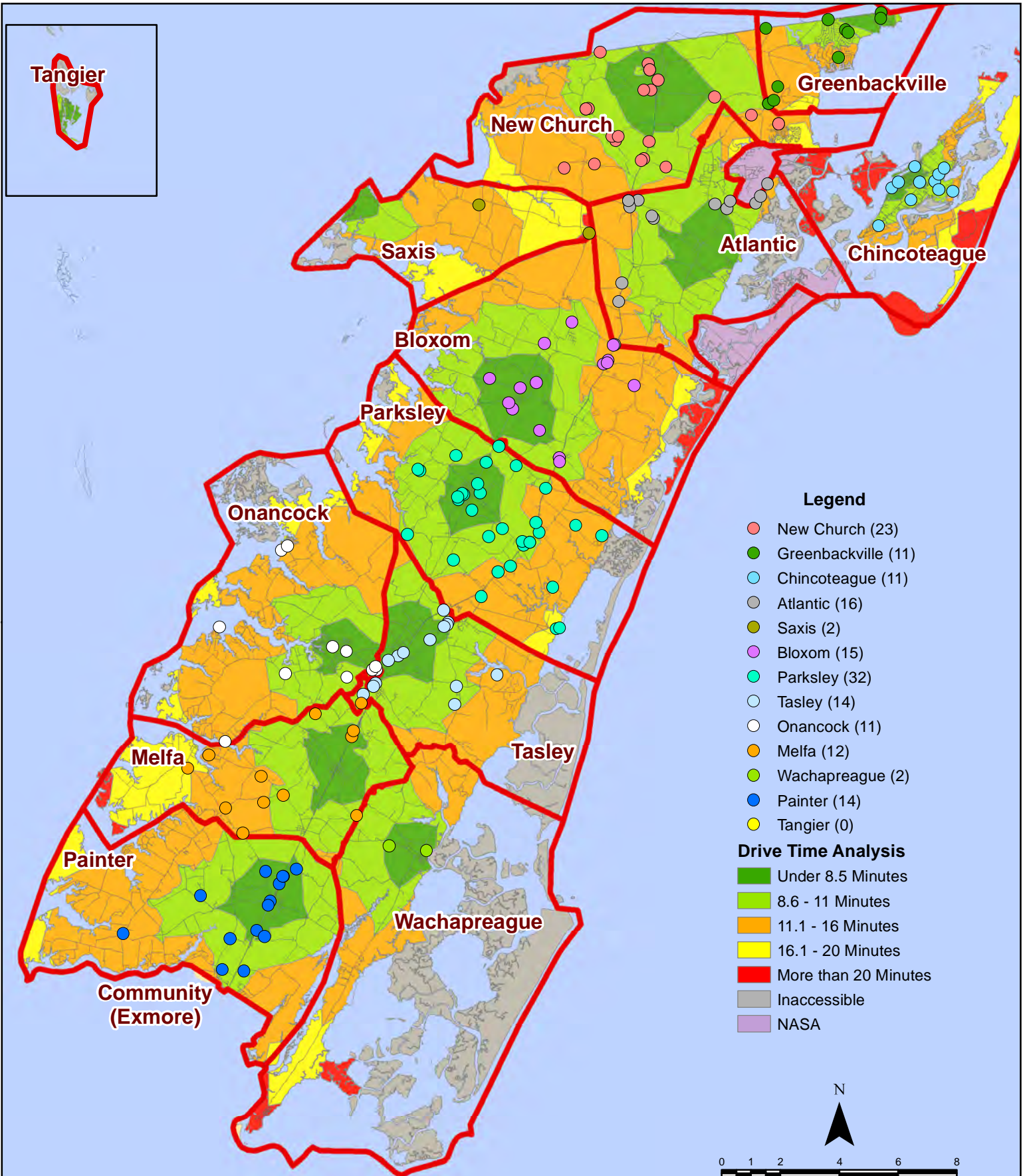


All points are plotted using X and Y coordinates provided by the ESVA 911 Center. Points may be plotted over one another when they are in close proximity.

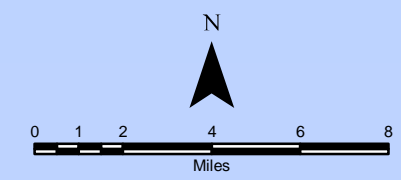


Map Prepared by the Accomack County Department of Building, Planning & Economic Development using data from the ESVA 911 Center - November 9, 2020

August 2020 Fire Calls By District

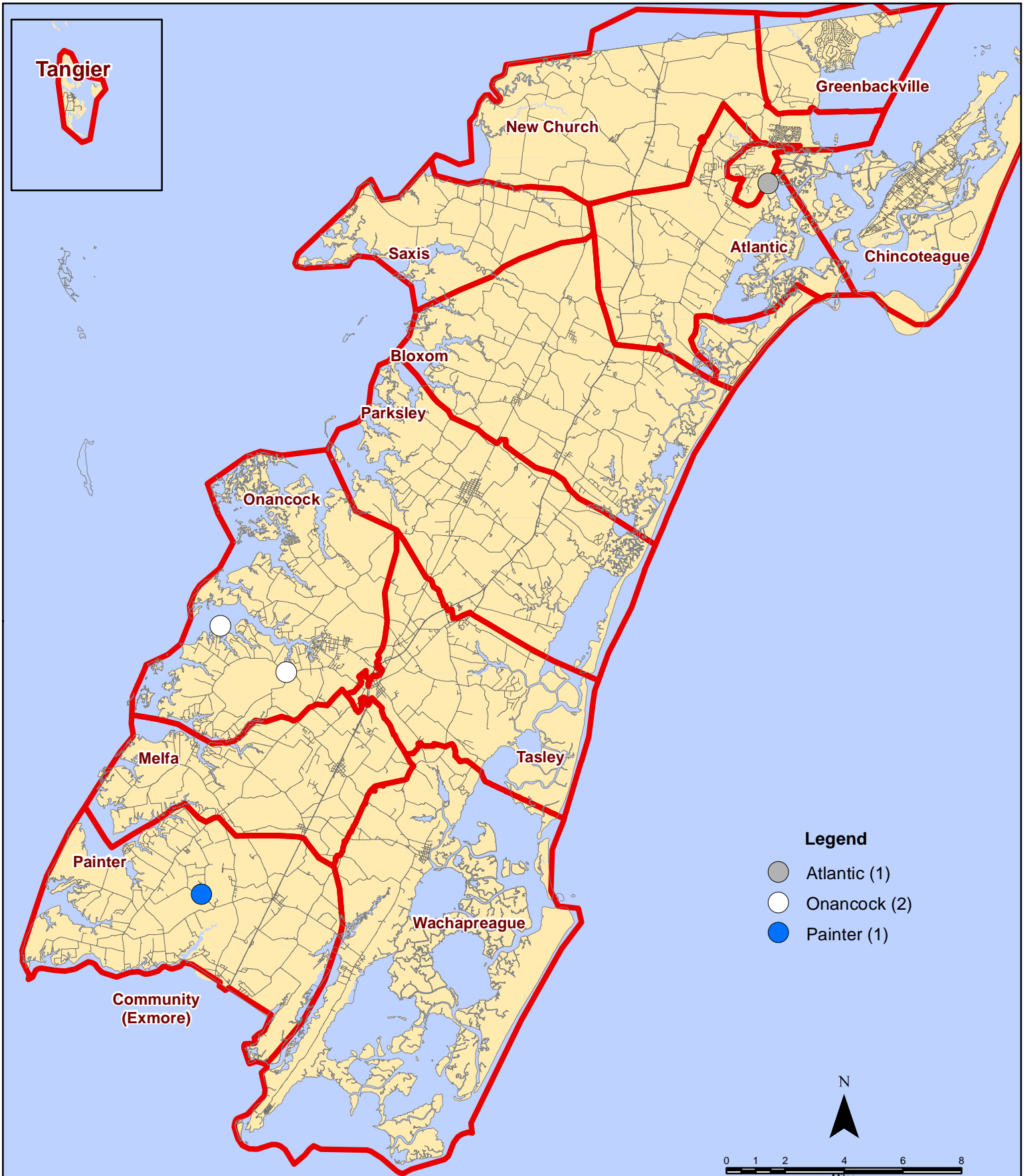


All points are plotted using X and Y coordinates provided by the ESVA 911 Center. Points may be plotted over one another when they are in close proximity.



Map Prepared by the Accomack County Department of Building, Planning & Economic Development using data from the ESVA 911 Center - November 9, 2020

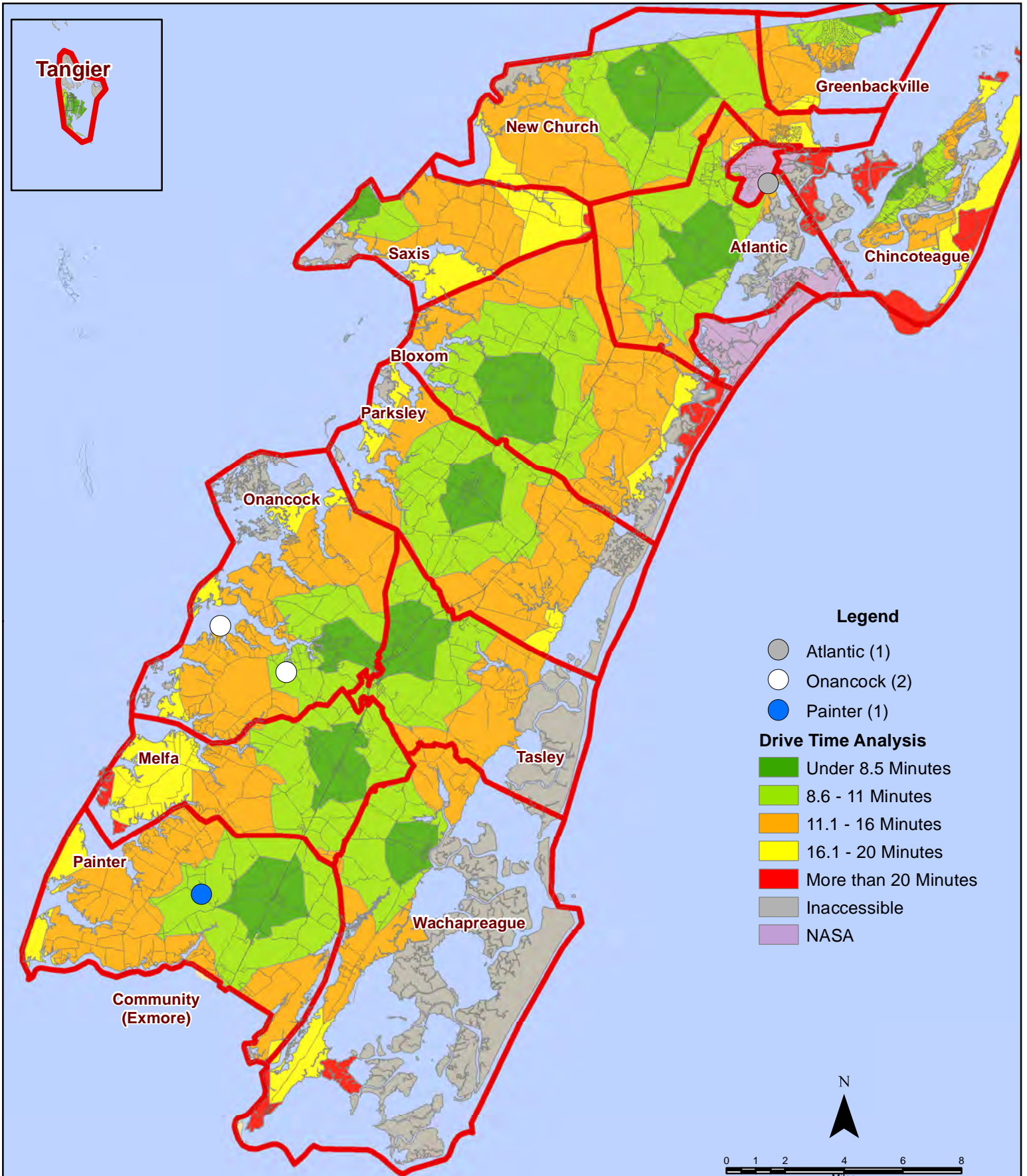
August 2020 Fire Calls With Response Time Greater Than 20 Mins.



All points are plotted using X and Y coordinates provided by the ESVA 911 Center. Points may be plotted over one another when they are in close proximity.

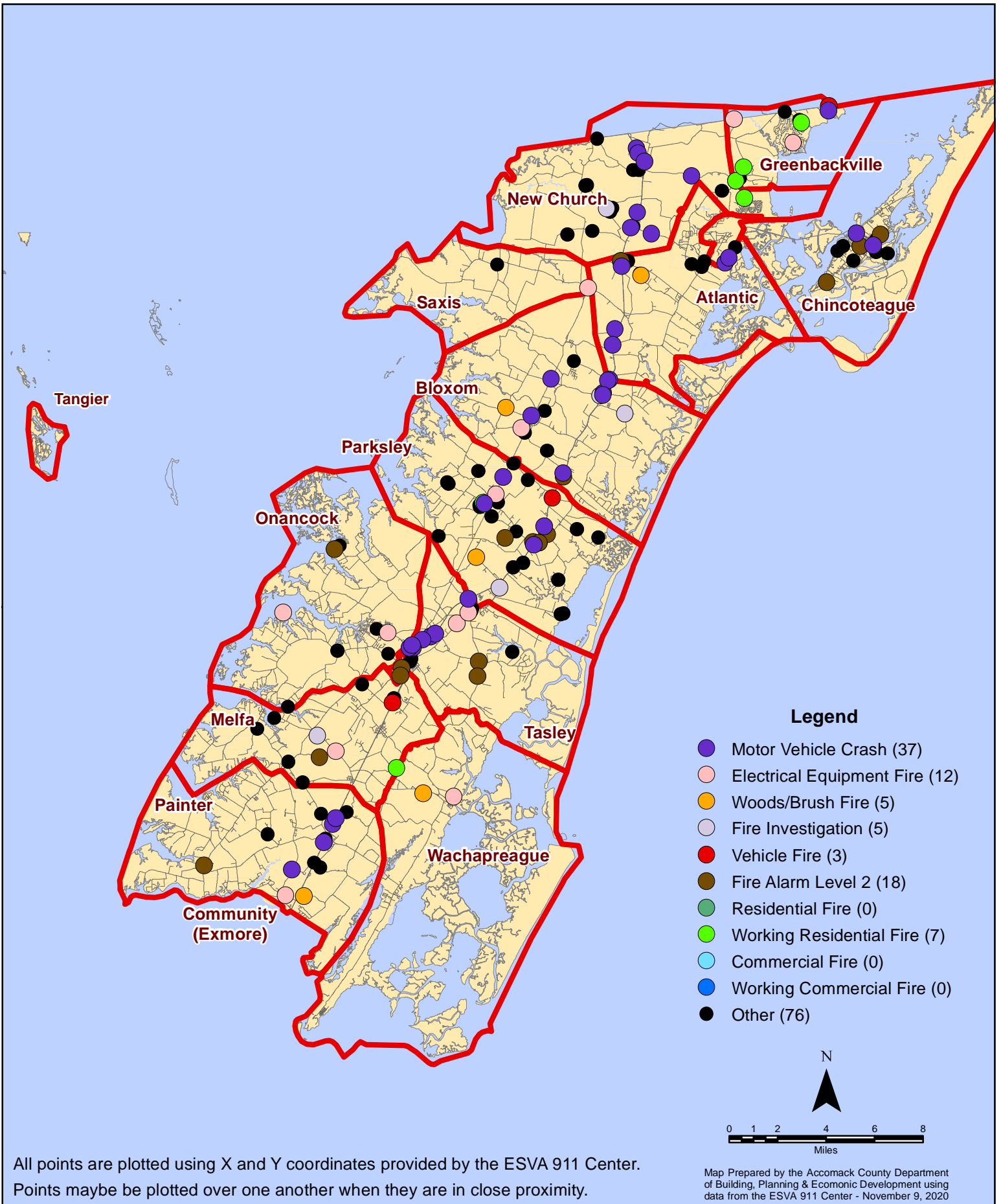
Map Prepared by the Accomack County Department of Building, Planning & Economic Development using data from the ESVA 911 Center - November 9, 2020

August 2020 Fire Calls With Response Time Greater Than 20 Mins.



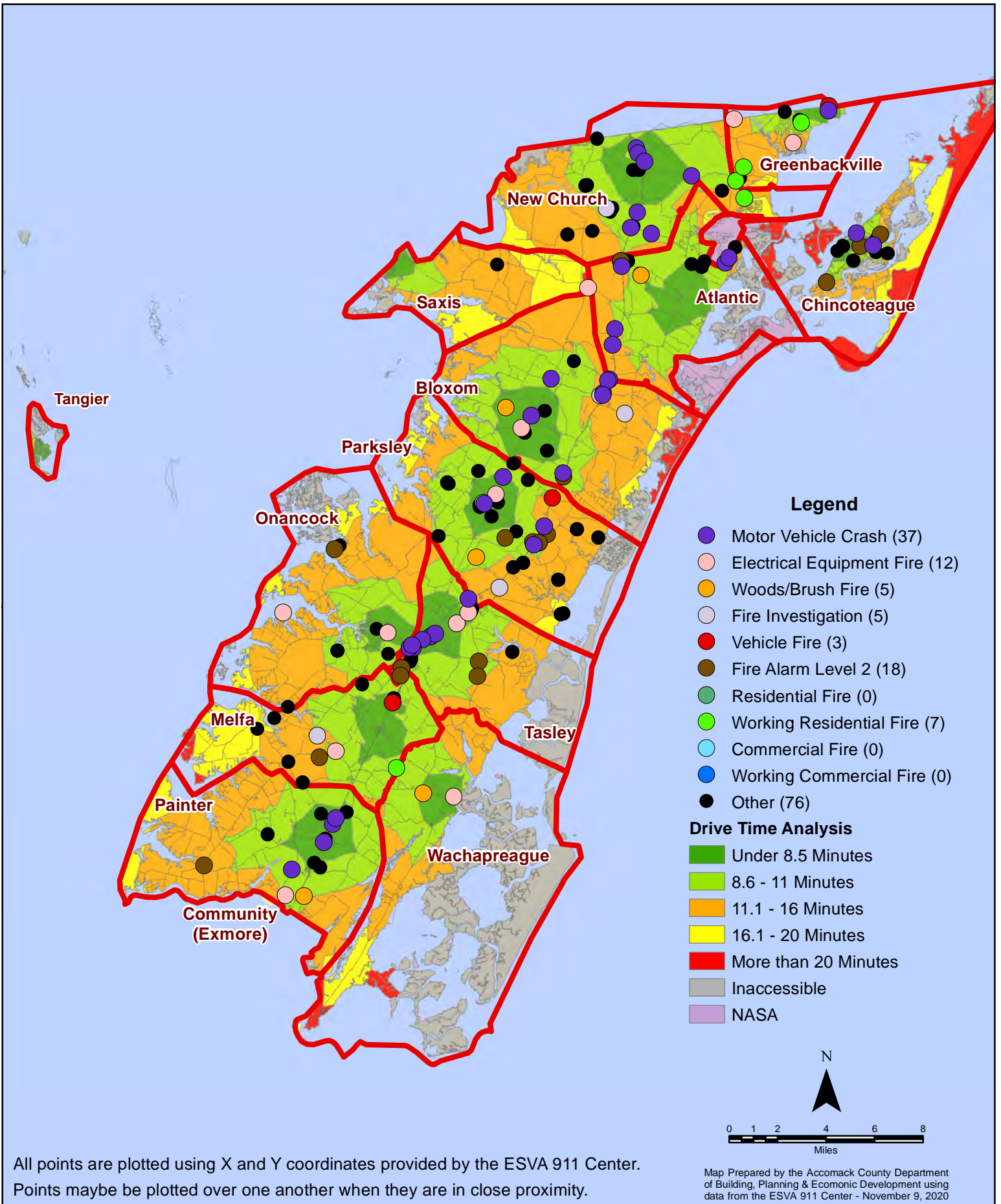
All points are plotted using X and Y coordinates provided by the ESVA 911 Center. Points maybe be plotted over one another when they are in close proximity.

August 2020 Fire Calls By Type



All points are plotted using X and Y coordinates provided by the ESVA 911 Center. Points may be plotted over one another when they are in close proximity.

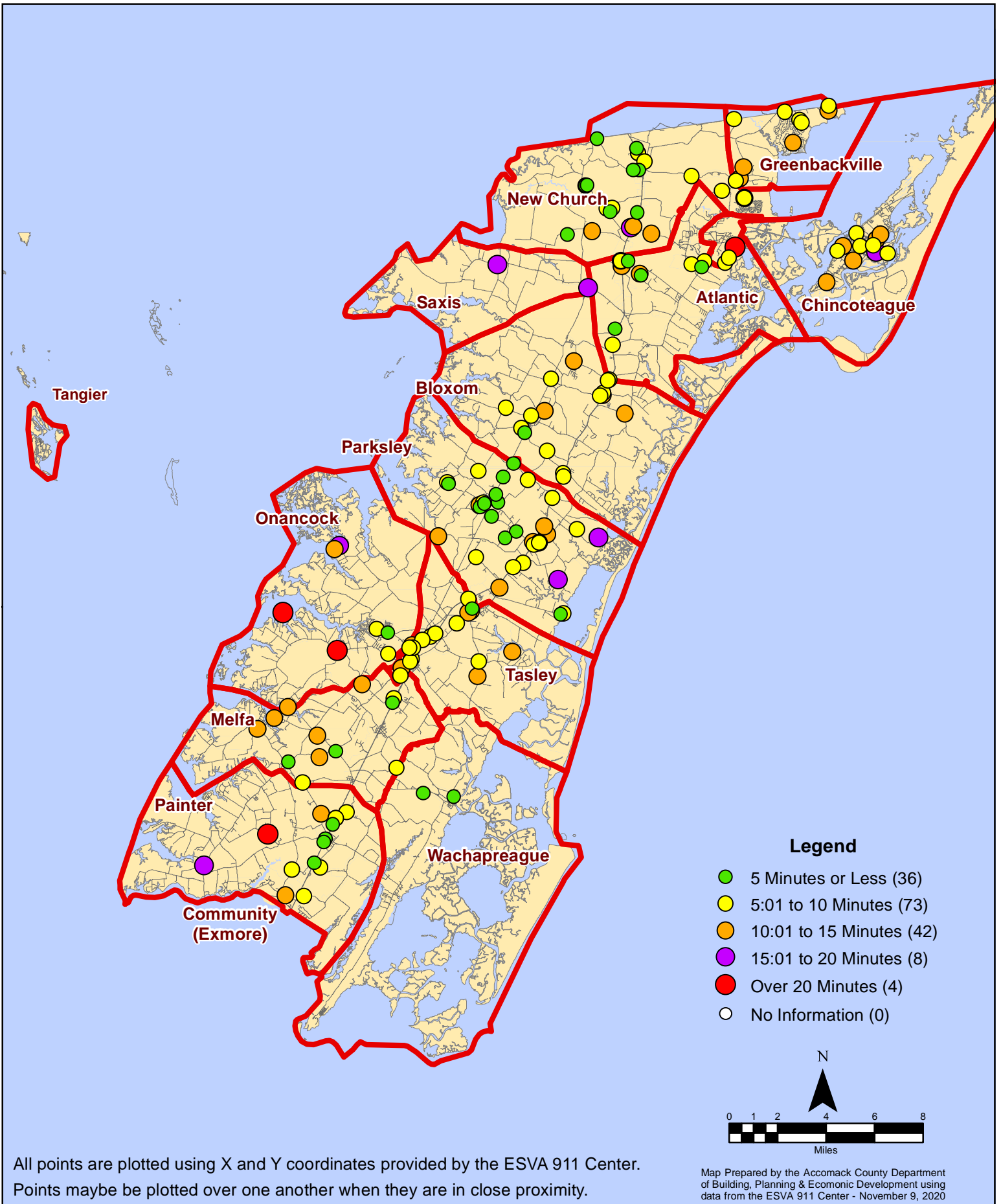
August 2020 Fire Calls By Type



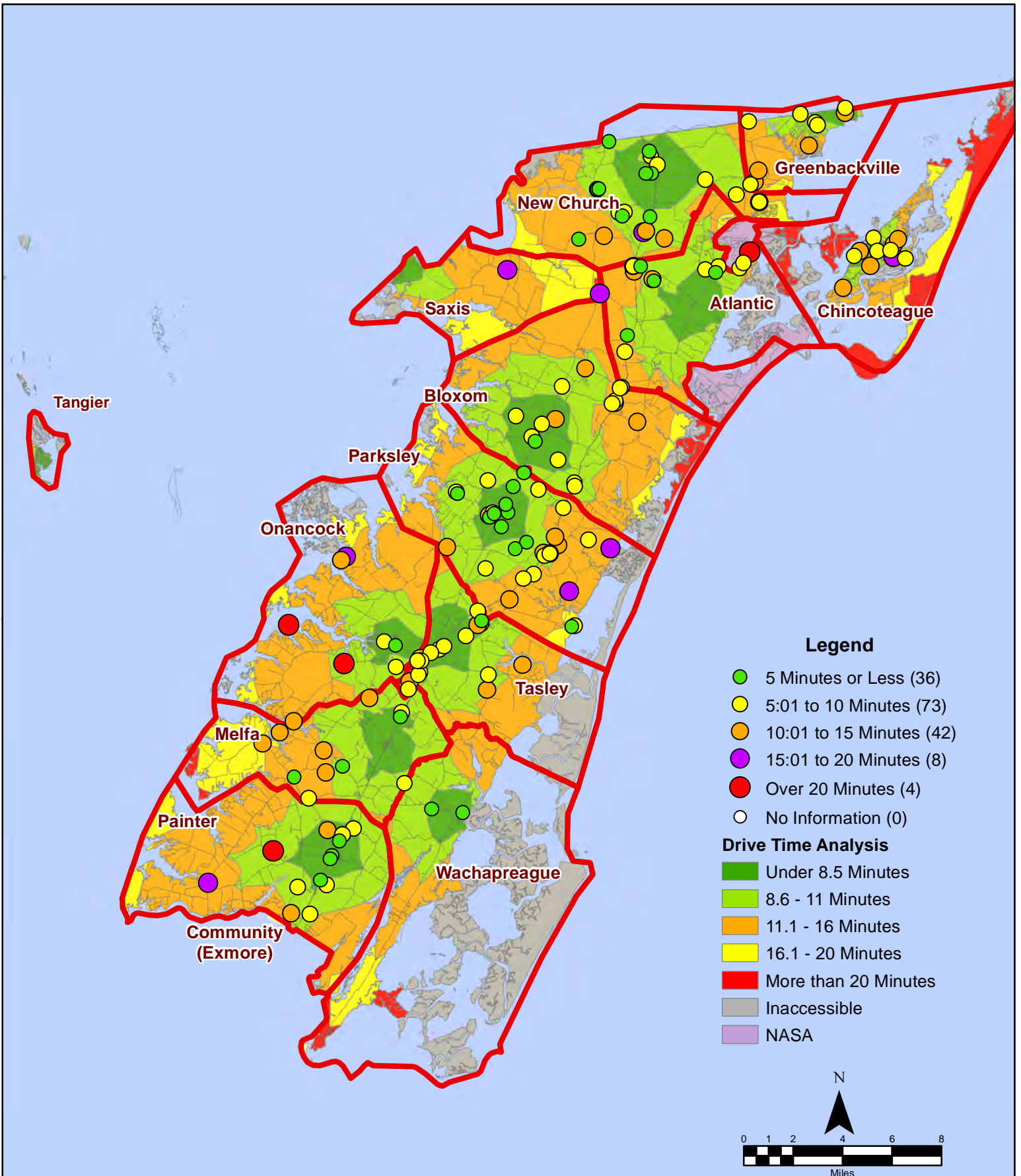
All points are plotted using X and Y coordinates provided by the ESVA 911 Center. Points may be plotted over one another when they are in close proximity.

Map Prepared by the Accomack County Department of Building, Planning & Economic Development using data from the ESVA 911 Center - November 9, 2020

August 2020 Fire Calls By Response Time



August 2020 Fire Calls By Response Time



All points are plotted using X and Y coordinates provided by the ESVA 911 Center. Points may be plotted over one another when they are in close proximity.

Map Prepared by the Accomack County Department of Building, Planning & Economic Development using data from the ESVA 911 Center - November 9, 2020