

# November 2020

Fire - Performance Measure Data *					
Response District	Total Calls in District	Greater than 20 min. Response Time	Longest Response Time	Calls Handled by other agency	Overall Station Benchmark %
New Church	13	0	0:14:38	1	100.0%
Greenbackville	3	0	0:07:09	0	100.0%
Chincoteague	4	1	0:23:21	0	75.0%
Atlantic	4	0	0:15:19	0	100.0%
Saxis	2	0	0:07:44	0	100.0%
Bloxom	9	0	0:09:48	2	100.0%
Parksley	11	0	0:12:27	0	100.0%
Tasley	5	0	0:14:31	0	100.0%
Onancock	11	0	0:17:01	0	100.0%
Melfa	5	1	0:20:31	2	80.0%
Wachapreague	0	0	0	0	#DIV/0!
Painter	7	0	0:13:44	0	100.0%
Tangier	2	0	0:12:07	0	100.0%
<b>System Totals</b>	<b>76</b>	<b>2</b>	<b>0:23:21</b>	<b>5</b>	<b>97.4%</b>

EMS - Performance Measure Data						
Response District	Total Calls in District	Greater than 20 min. Response Time	Longest Response Time	Calls Handled by other agency	Station Benchmark Compliance %	Overall Station Reliability %
Greenbackville	19	3	0:21:47	10	84.2%	47.4%
Chincoteague	56	2	0:21:05	2	96.4%	96.4%
Saxis	12	0	0:14:01	2	100.0%	83.3%
Bloxom	33	0	0:17:39	1	100.0%	97.0%
Parksley	82	0	0:18:04	3	100.0%	96.3%
Onancock	70	1	0:20:55	6	98.6%	91.4%
Melfa	29	0	0:17:05	2	100.0%	93.1%
Wachapreague (Painter)	36	2	0:20:14	2	94.4%	94.4%
Oak Hall	70	1	0:23:32	8	98.6%	88.6%
Tangier	8	1	0:26:48	0	87.5%	100.0%
Community (Exmore)	7	0	0:09:10	1	100.0%	85.7%
<b>System Totals</b>	<b>422</b>	<b>10</b>	<b>0:26:48</b>	<b>37</b>	<b>97.6%</b>	<b>91.2%</b>

	Station Giving Aid														
	Greenbackville	Chincoteague	Saxis	Bloxom	Parksley	Onancock	Melfa	Wachapreague/Painter	Oak Hall	Community (Exmore)	Northampton	Wallops	NORS	2nd Call	3rd Call
Greenbackville									8				10		
Chincoteague		1							1					2	
Saxis			2						2				1	1	
Bloxom				1										1	
Parksley				3										2	1
Onancock					2		4						1	5	
Melfa						2							1	1	
Wachapreague (Painter)							2						1	1	
Oak Hall	1	1	4	2									2	4	2
Community (Exmore)								1					1		
Northampton Co.															
Wallops															
<b>Totals</b>	<b>1</b>	<b>1</b>	<b>7</b>	<b>5</b>	<b>3</b>	<b>2</b>	<b>6</b>	<b>1</b>	<b>11</b>	<b>0</b>	<b>0</b>	<b>0</b>	<b>17</b>	<b>17</b>	<b>3</b>

Hospital Destination by Unit	Station Receiving Aid		
	Riverside - Shore Memorial	PRMC / Tidal Health	Other
Greenbackville	1	5	2
Chincoteague	12	24	1
Saxis	10	7	
Bloxom	21	1	
Parksley	51		
Onancock	38		
Melfa	25		
Wachapreague (Painter)	24		
Oak Hall	35	21	1
Wallops			
<b>Totals</b>	<b>217</b>	<b>58</b>	<b>4</b>

**Benchmark** = The Accomack County Board of Supervisors established a 20 minute standard for emergency response.

**NORS** = No Response by station or the call was handled by another station or agency.

**2nd Call** = 2nd ambulance call received while first ambulance was on another call.

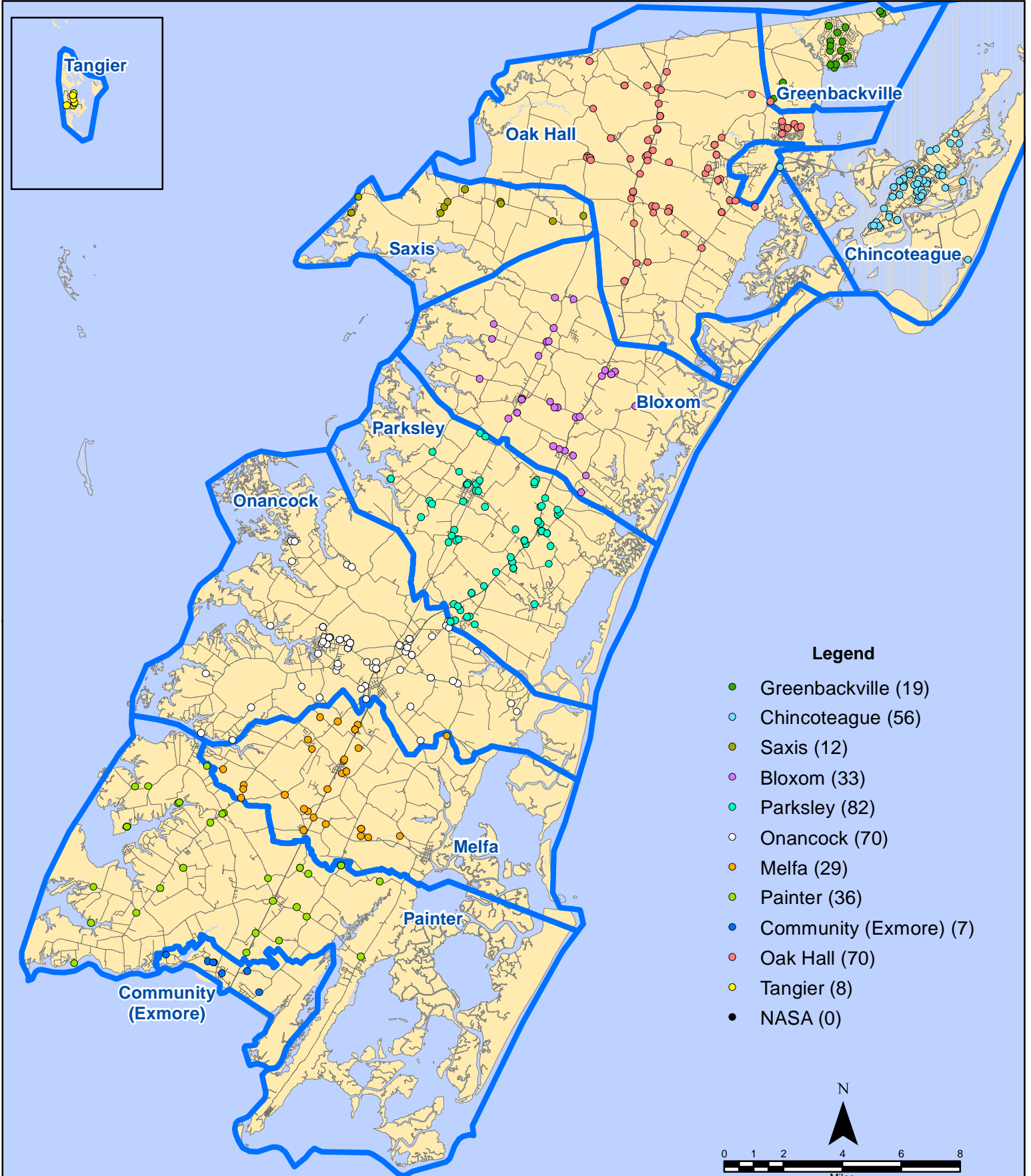
**3rd Call** = 3rd ambulance call received while first & second ambulances were on other calls.

\* This data excludes F1 Med (Medical Assist) calls in the Fire Data.

This information was prepared using data supplied by the Eastern Shore of Virginia 911 Center. This information is original incident data only and may not be representative of all units and/or stations who responded to an incident.

Station Receiving Aid

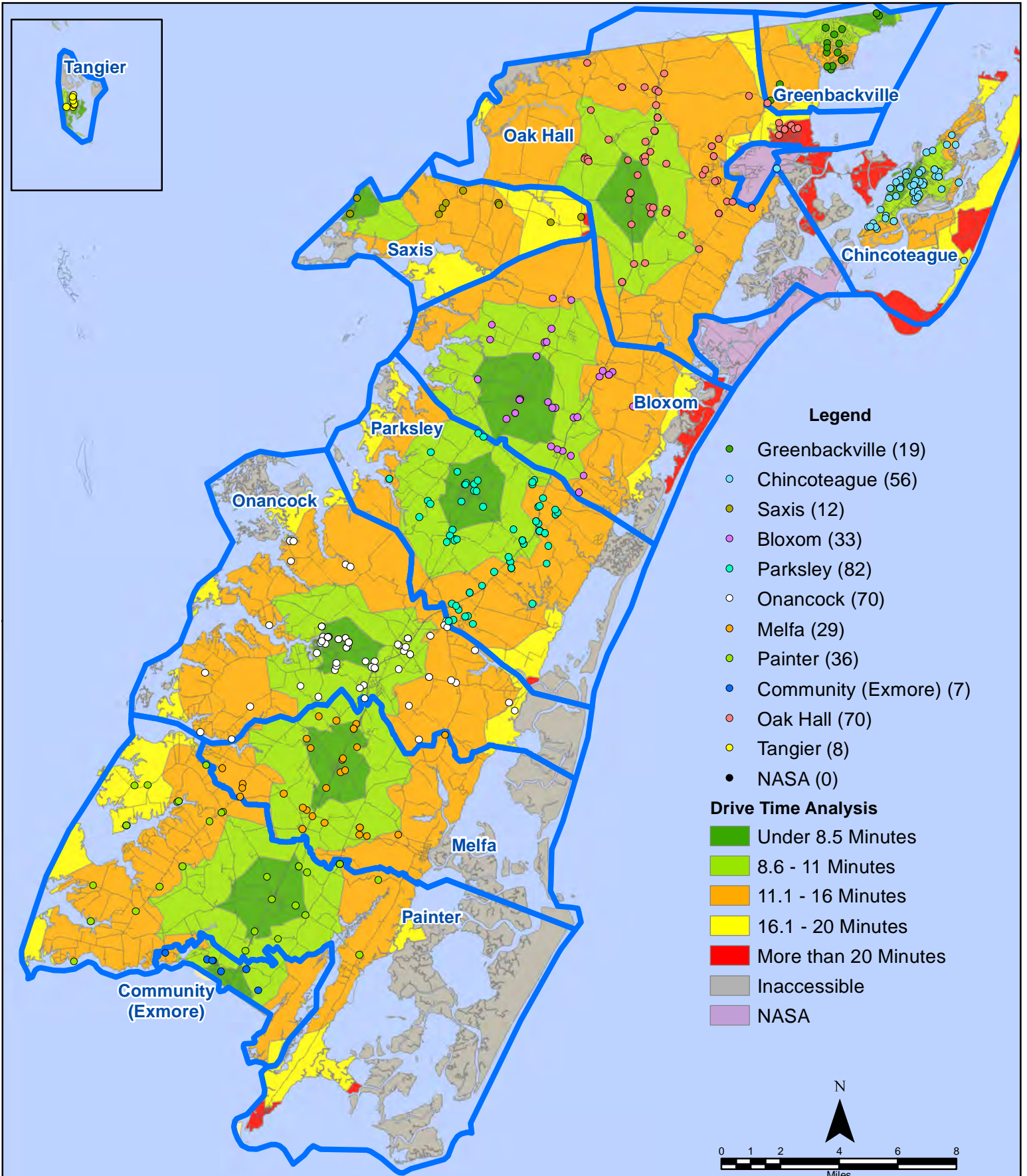
# November 2020 EMS Calls By District



All points are plotted using X and Y coordinates provided by the ESVA 911 Center.  
Points may be plotted over one another when they are in close proximity.

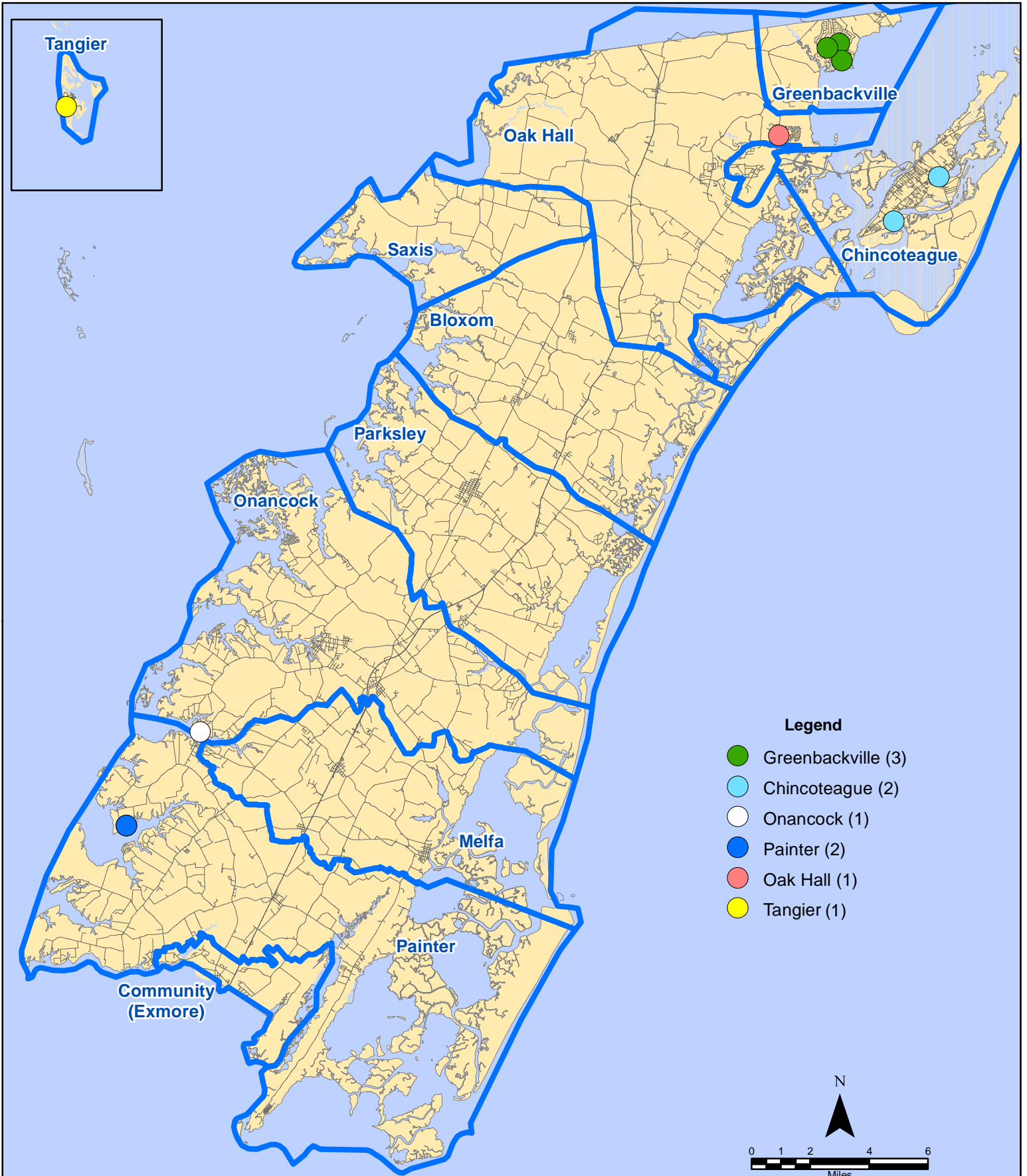
Map Prepared by the Accomack County Department of Building, Planning & Economic Development using data from the ESVA 911 Center - January 7, 2021

# November 2020 EMS Calls By District



All points are plotted using X and Y coordinates provided by the ESVA 911 Center. Points may be plotted over one another when they are in close proximity.

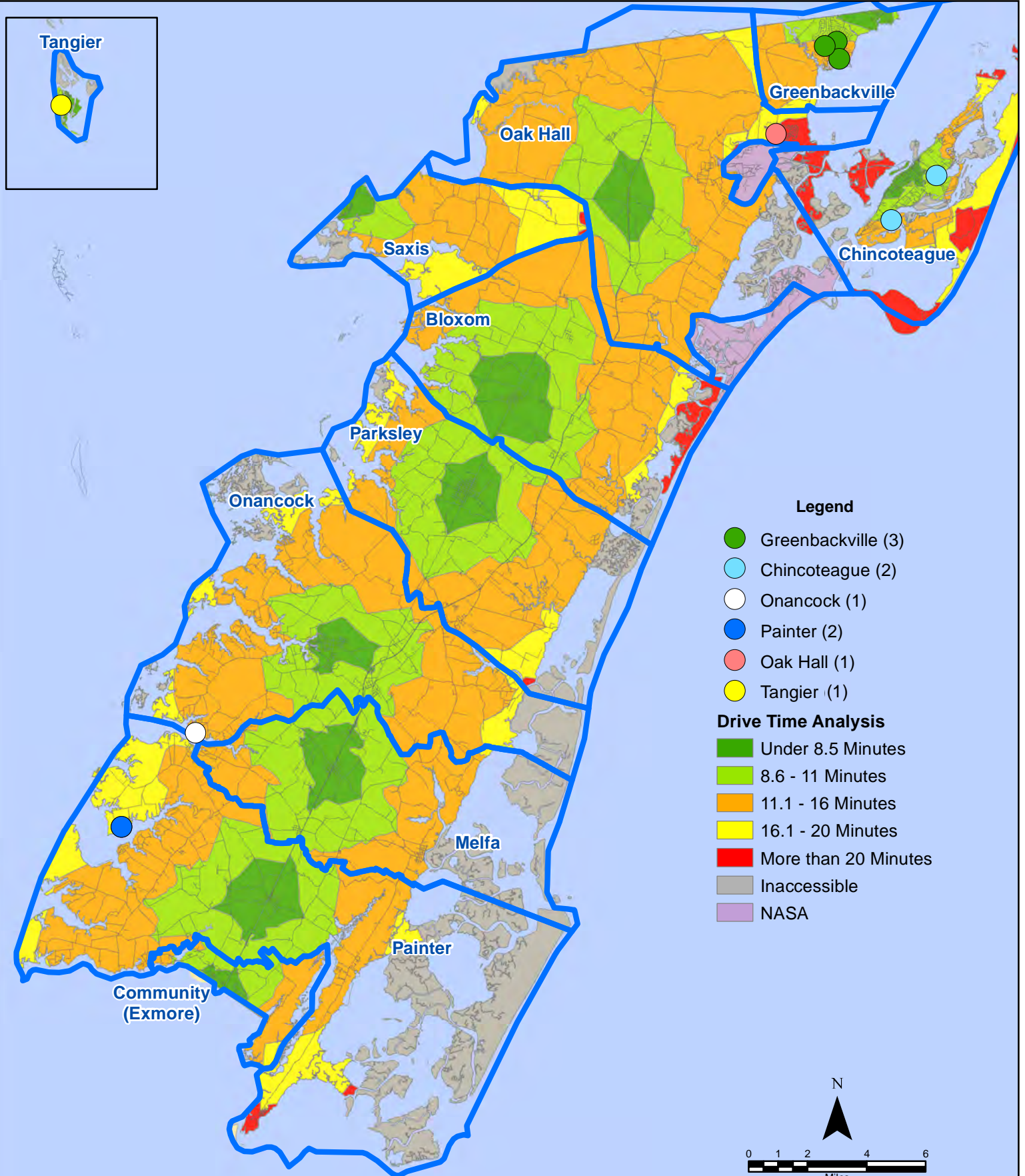
# November 2020 EMS Calls With Response Time Greater Than 20 Mins.



All points are plotted using X and Y coordinates provided by the ESVA 911 Center. Points may be plotted over one another when they are in close proximity.

Map Prepared by the Accomack County Department of Building, Planning & Economic Development using data from the ESVA 911 Center - January 7, 2021

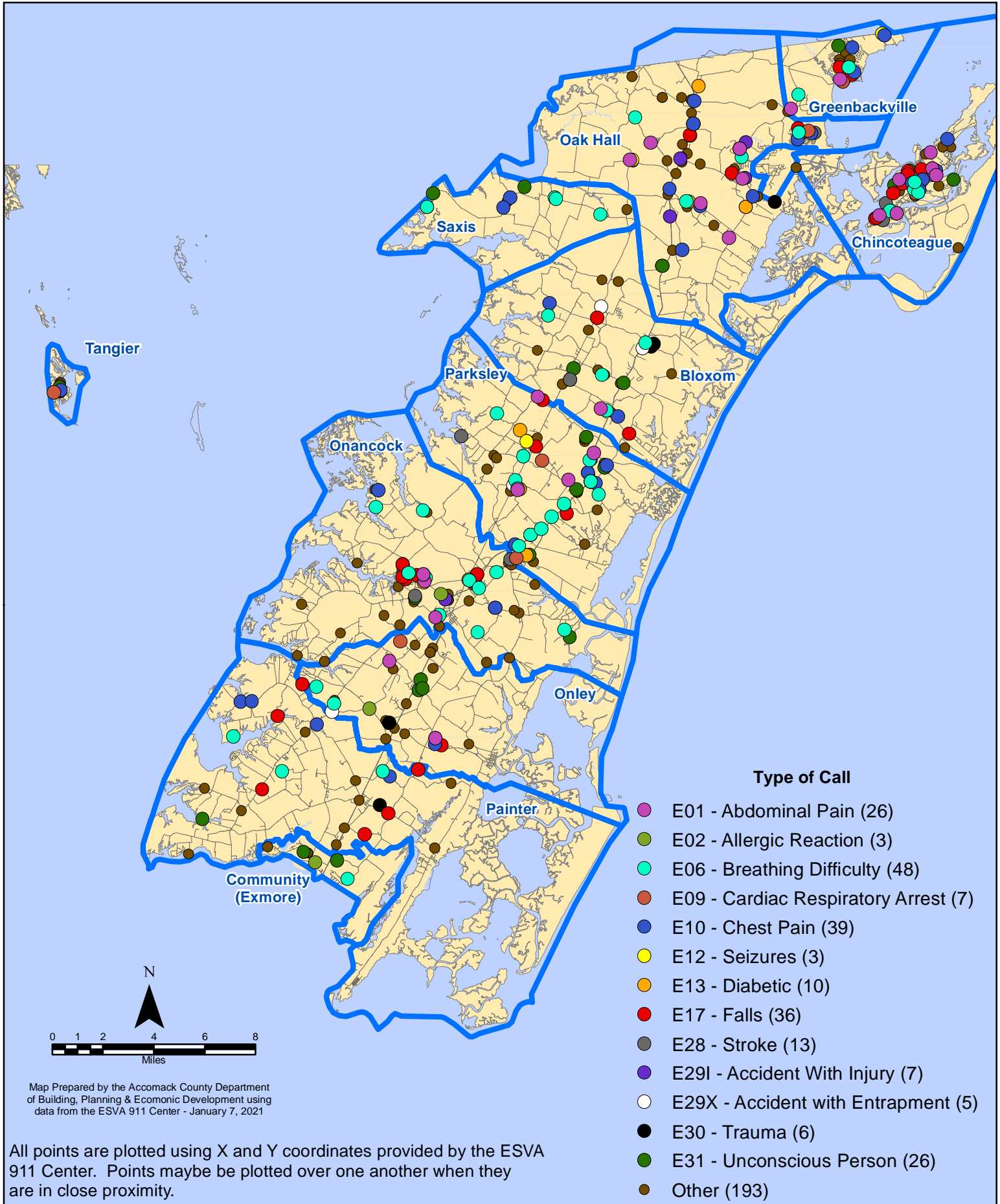
# November 2020 EMS Calls With Response Time Greater Than 20 Mins.



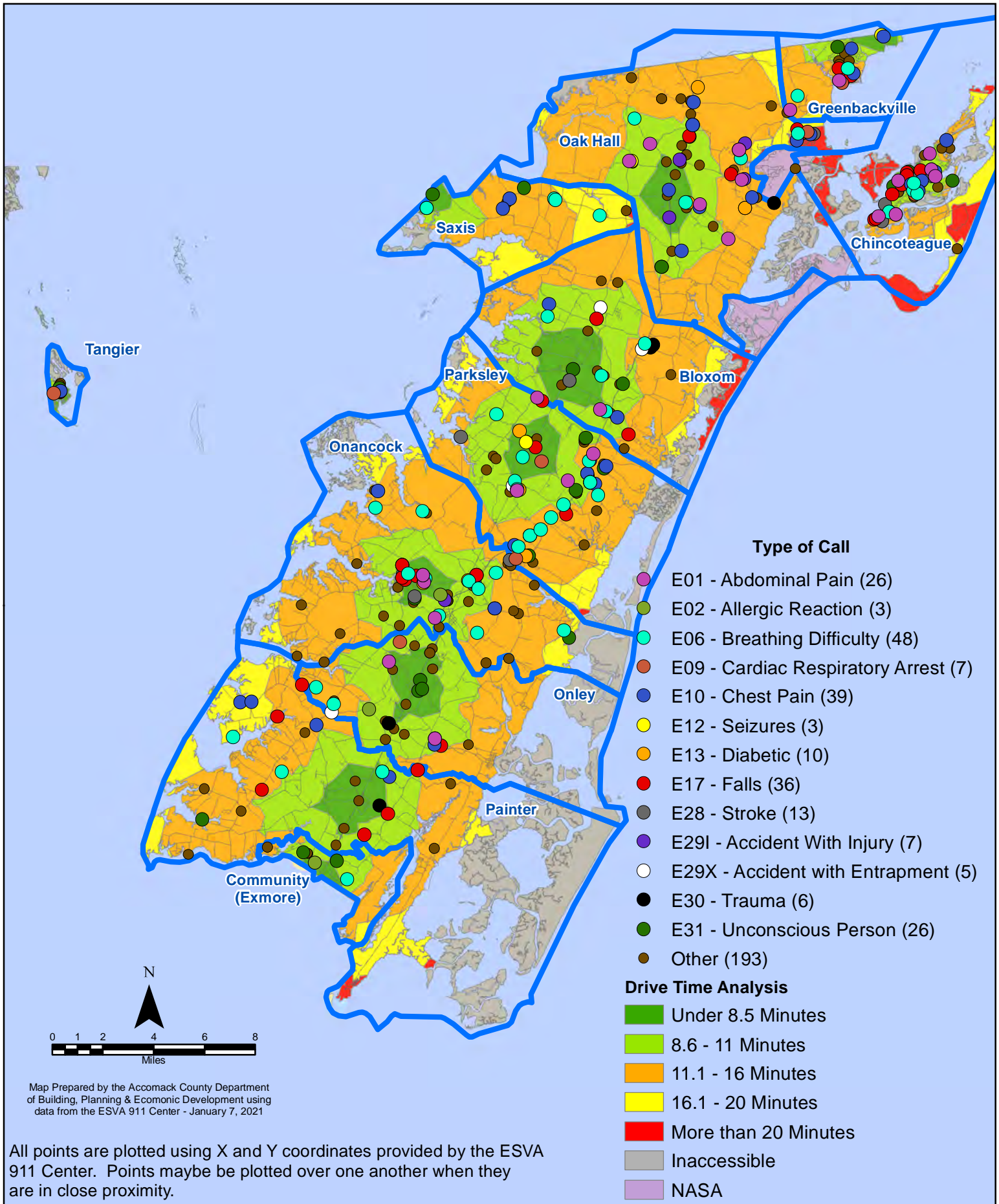
All points are plotted using X and Y coordinates provided by the ESVA 911 Center. Points may be plotted over one another when they are in close proximity.

Map Prepared by the Accomack County Department of Building, Planning & Economic Development using data from the ESVA 911 Center - January 7, 2021

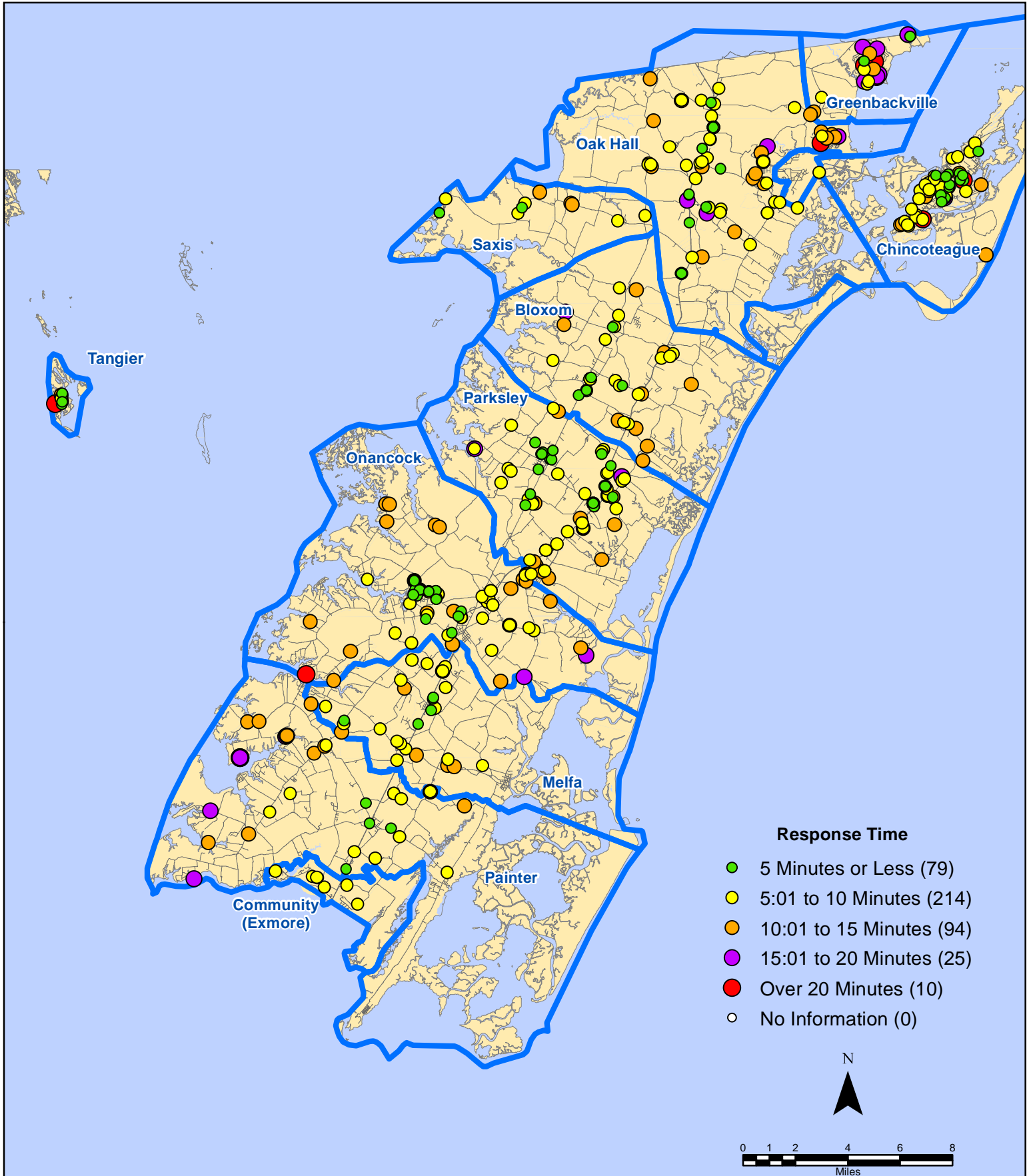
# November 2020 EMS Calls By Type



# November 2020 EMS Calls By Type



# November 2020 EMS Calls By Response Time

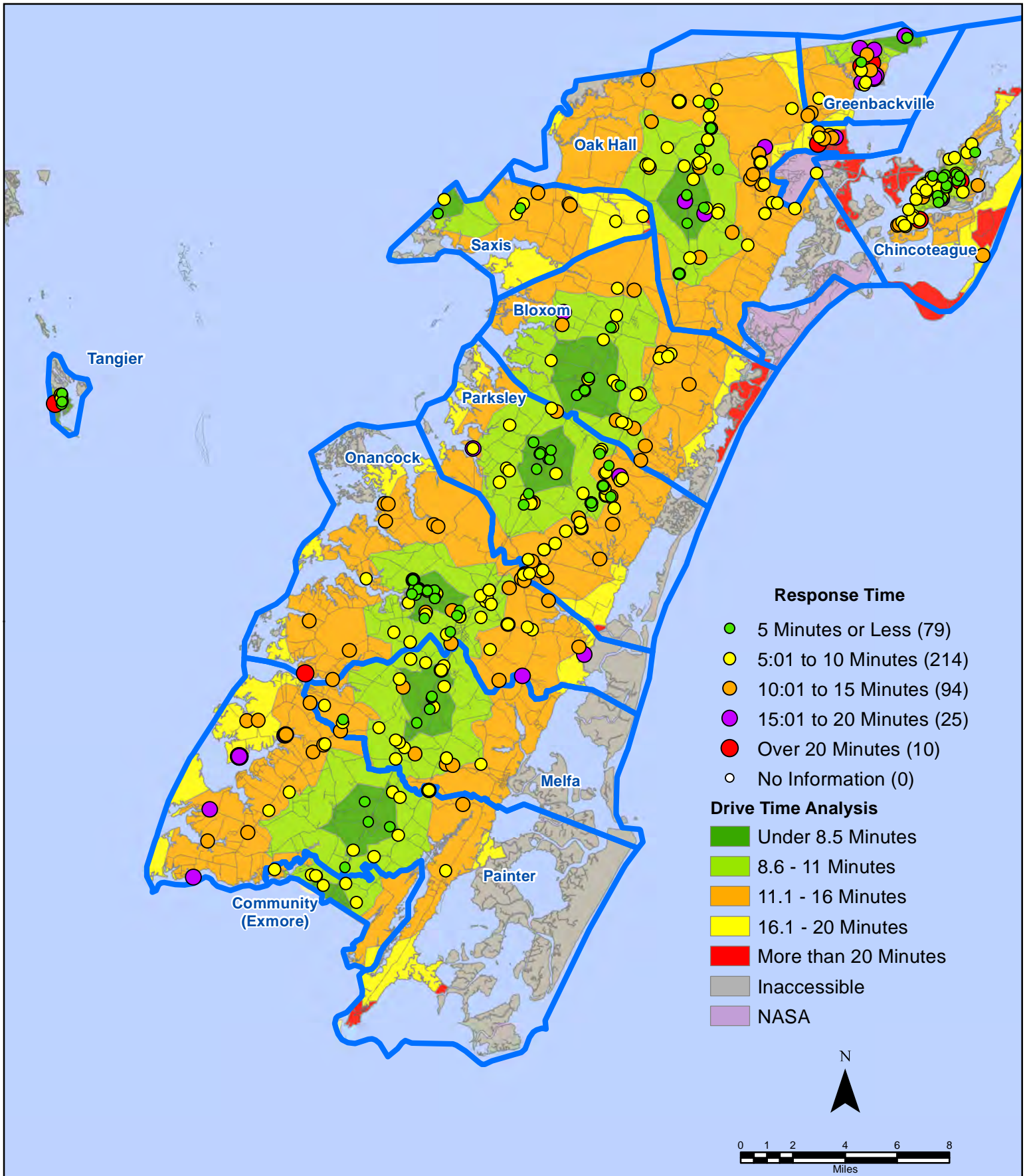


All points are plotted using X and Y coordinates provided by the ESVA 911 Center.  
Points may be plotted over one another when they are in close proximity.

Map Prepared by the Accomack County Department of Building, Planning & Economic Development using data from the ESVA 911 Center - January 7, 2021

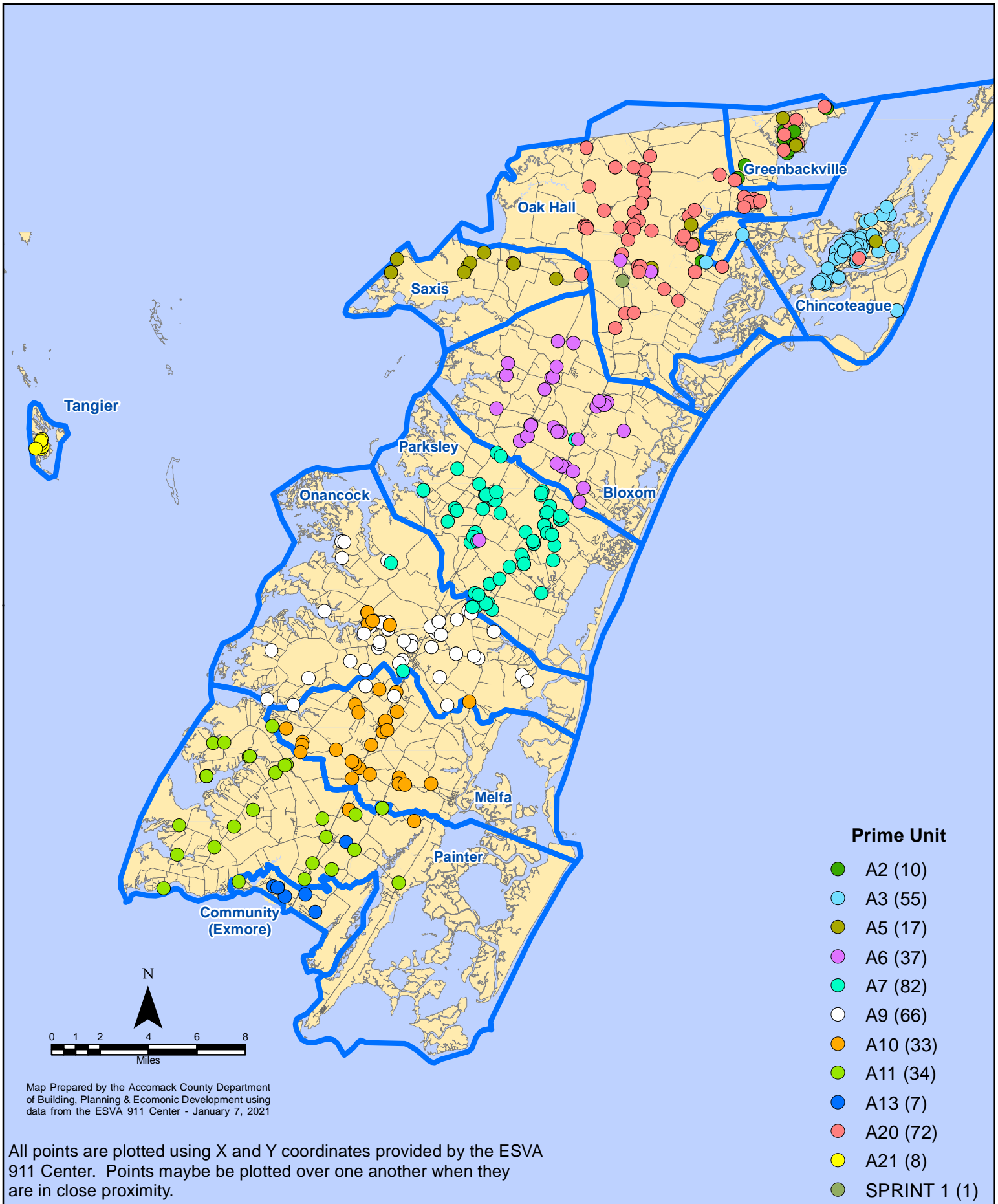


# November 2020 EMS Calls By Response Time

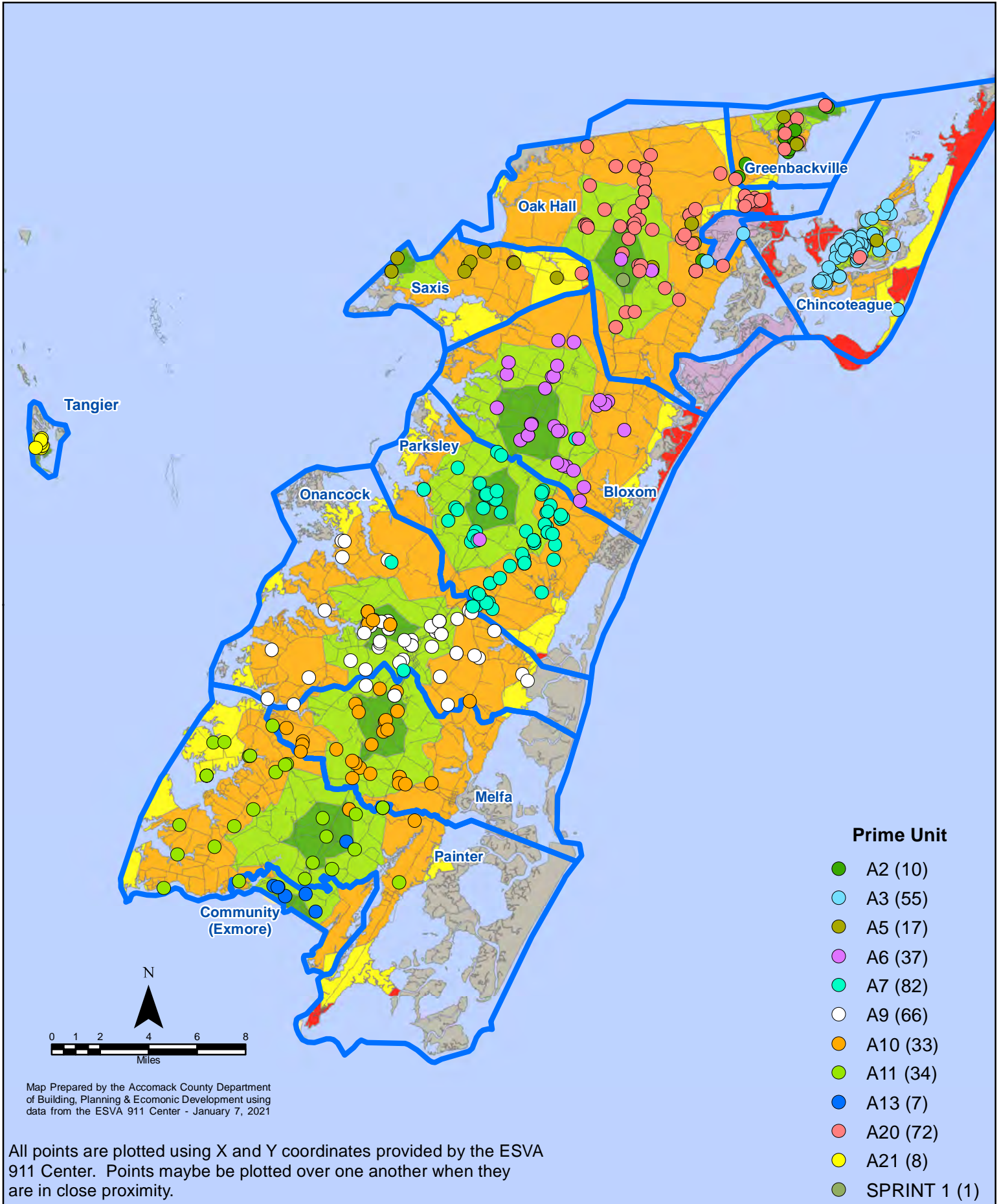


All points are plotted using X and Y coordinates provided by the ESVA 911 Center. Points may be plotted over one another when they are in close proximity.

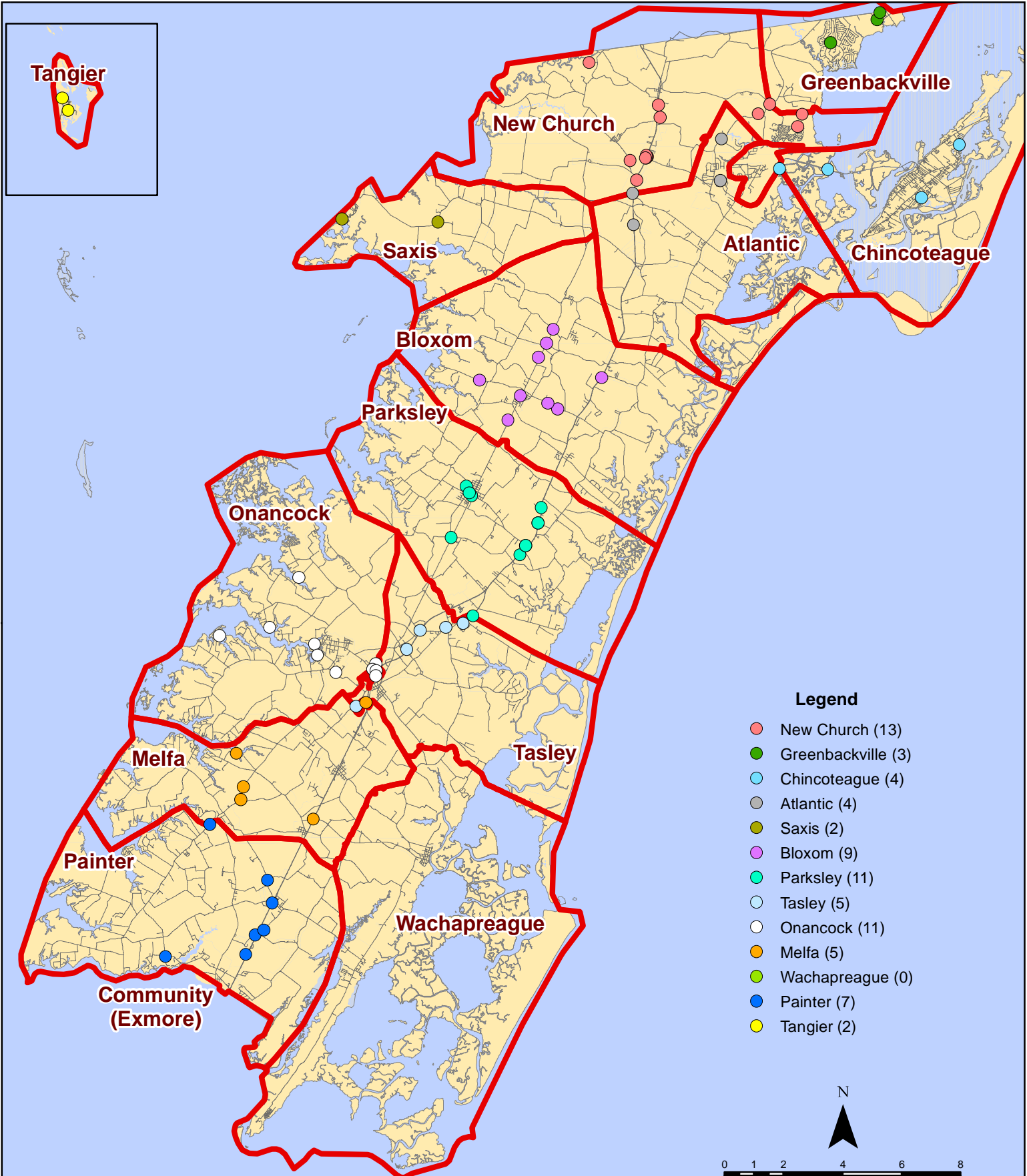
# November 2020 EMS Calls By Prime Unit



# November 2020 EMS Calls By Prime Unit



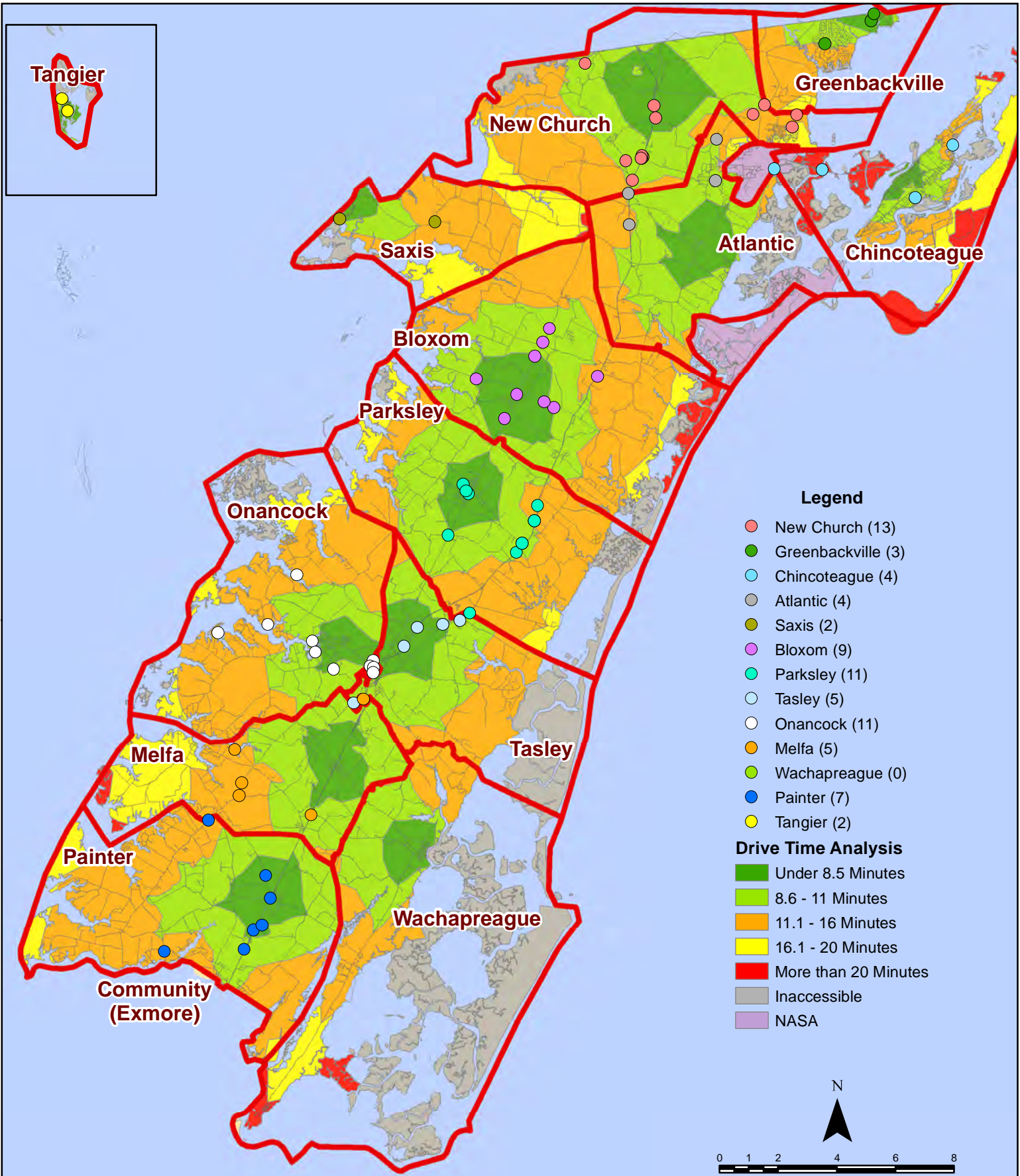
# November 2020 Fire Calls By District



All points are plotted using X and Y coordinates provided by the ESVA 911 Center. Points may be plotted over one another when they are in close proximity.

Map Prepared by the Accomack County Department of Building, Planning & Economic Development using data from the ESVA 911 Center - January 7, 2021

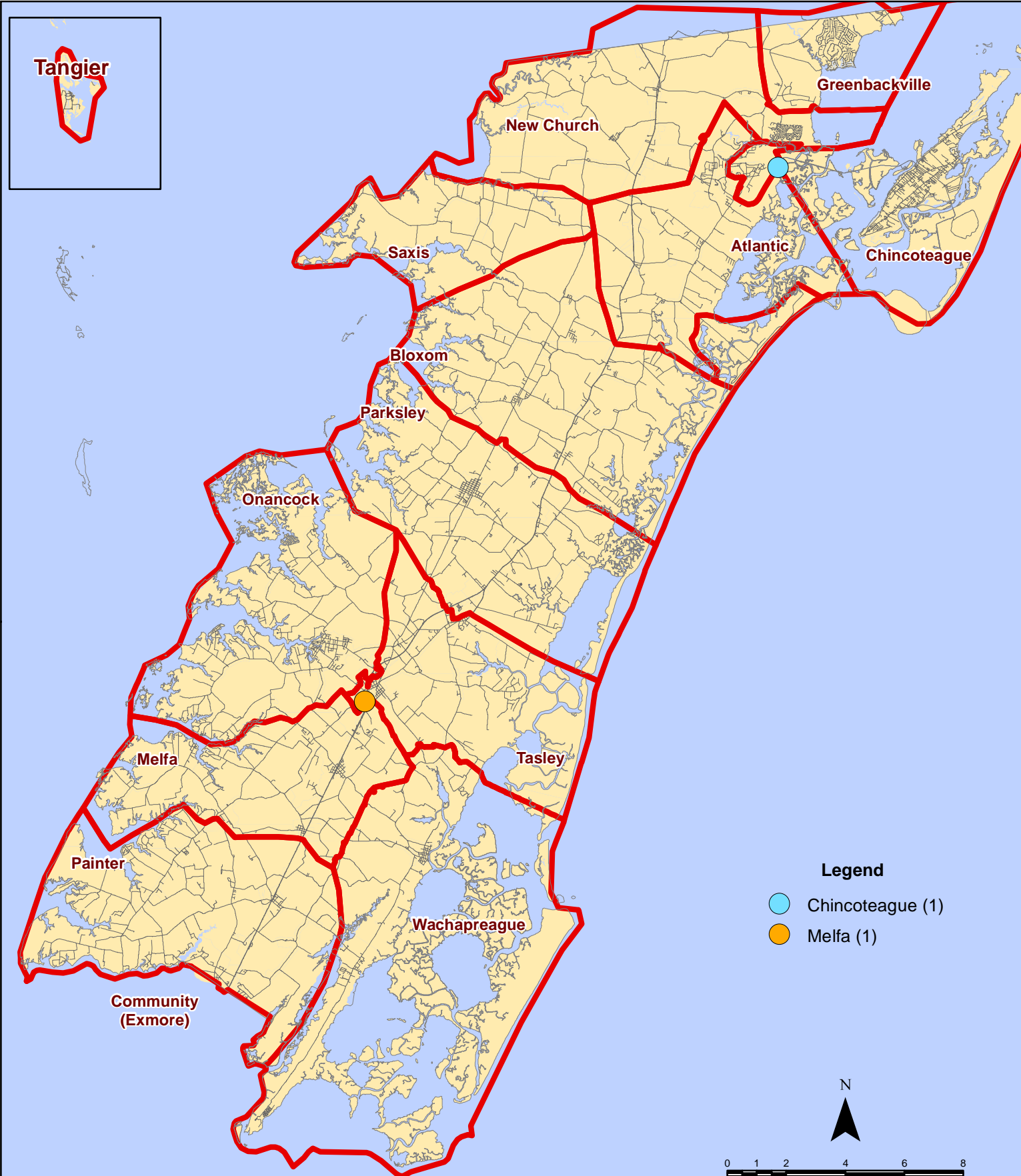
# November 2020 Fire Calls By District



All points are plotted using X and Y coordinates provided by the ESVA 911 Center. Points may be plotted over one another when they are in close proximity.

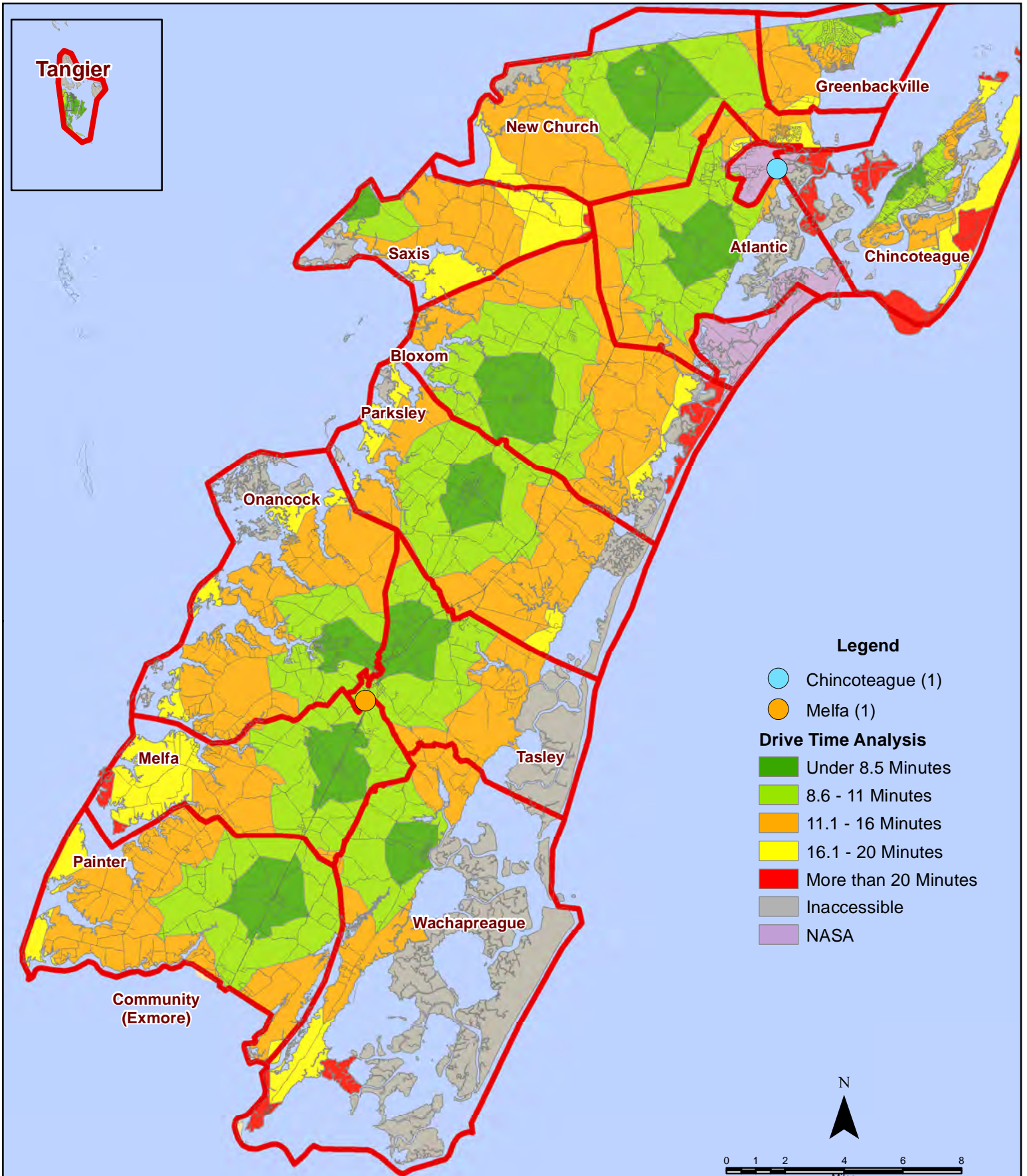
Map Prepared by the Accomack County Department of Building, Planning & Economic Development using data from the ESVA 911 Center - January 7, 2021

# November 2020 Fire Calls With Response Time Greater Than 20 Mins.



All points are plotted using X and Y coordinates provided by the ESVA 911 Center. Points may be plotted over one another when they are in close proximity.

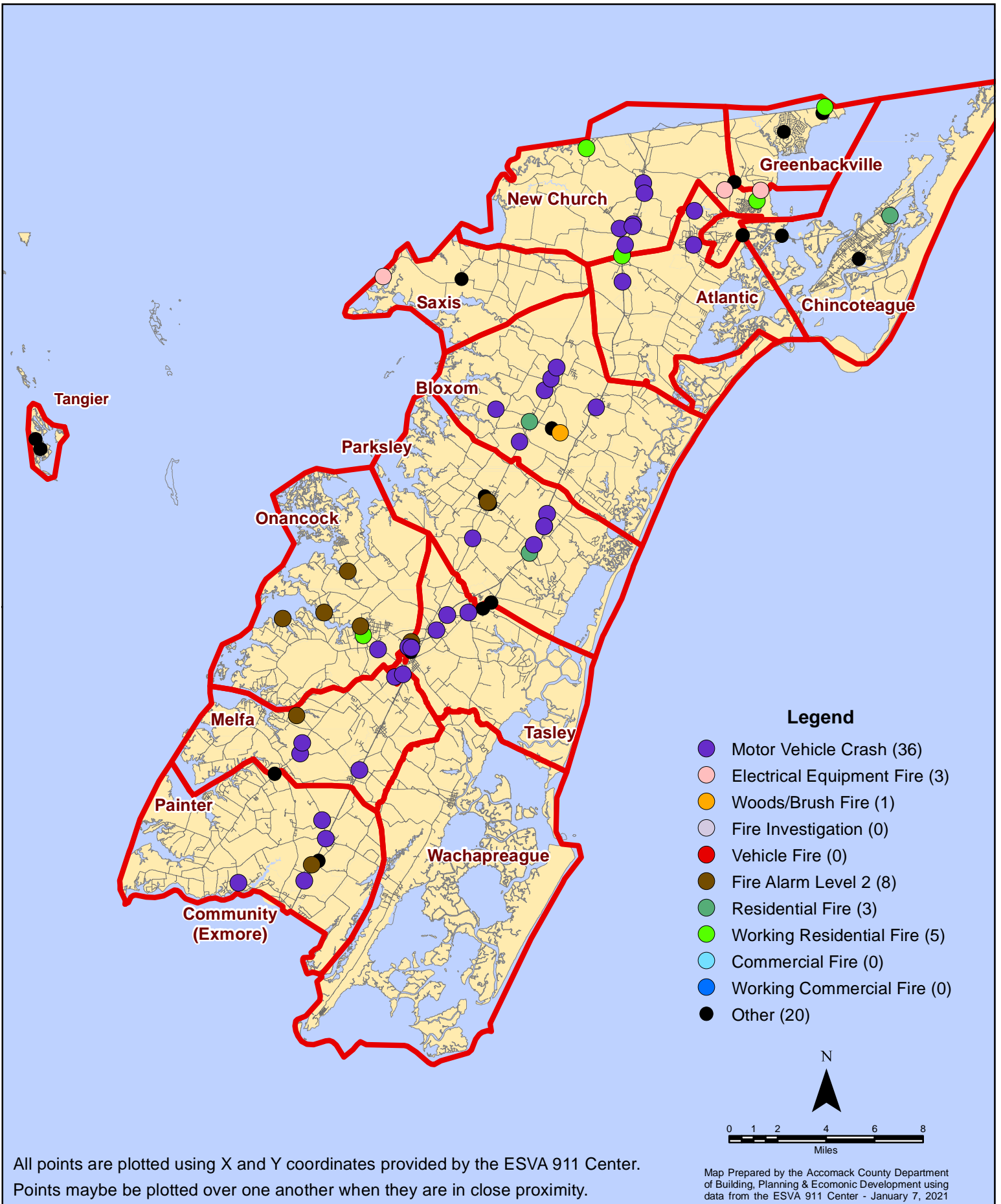
# November 2020 Fire Calls With Response Time Greater Than 20 Mins.



All points are plotted using X and Y coordinates provided by the ESVA 911 Center. Points may be plotted over one another when they are in close proximity.

Map Prepared by the Accomack County Department of Building, Planning & Economic Development using data from the ESVA 911 Center - January 7, 2021

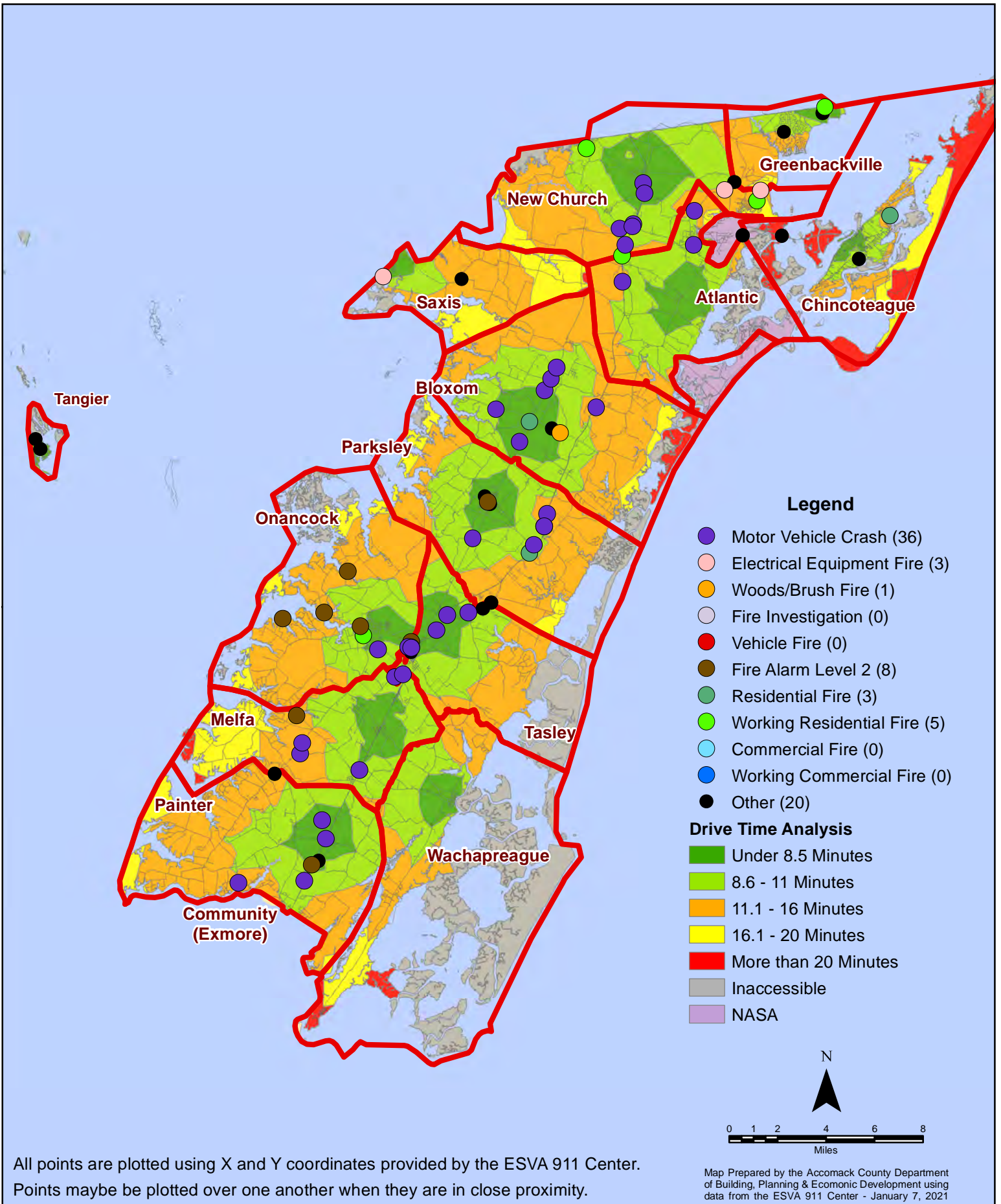
# November 2020 Fire Calls By Type



All points are plotted using X and Y coordinates provided by the ESVA 911 Center. Points may be plotted over one another when they are in close proximity.



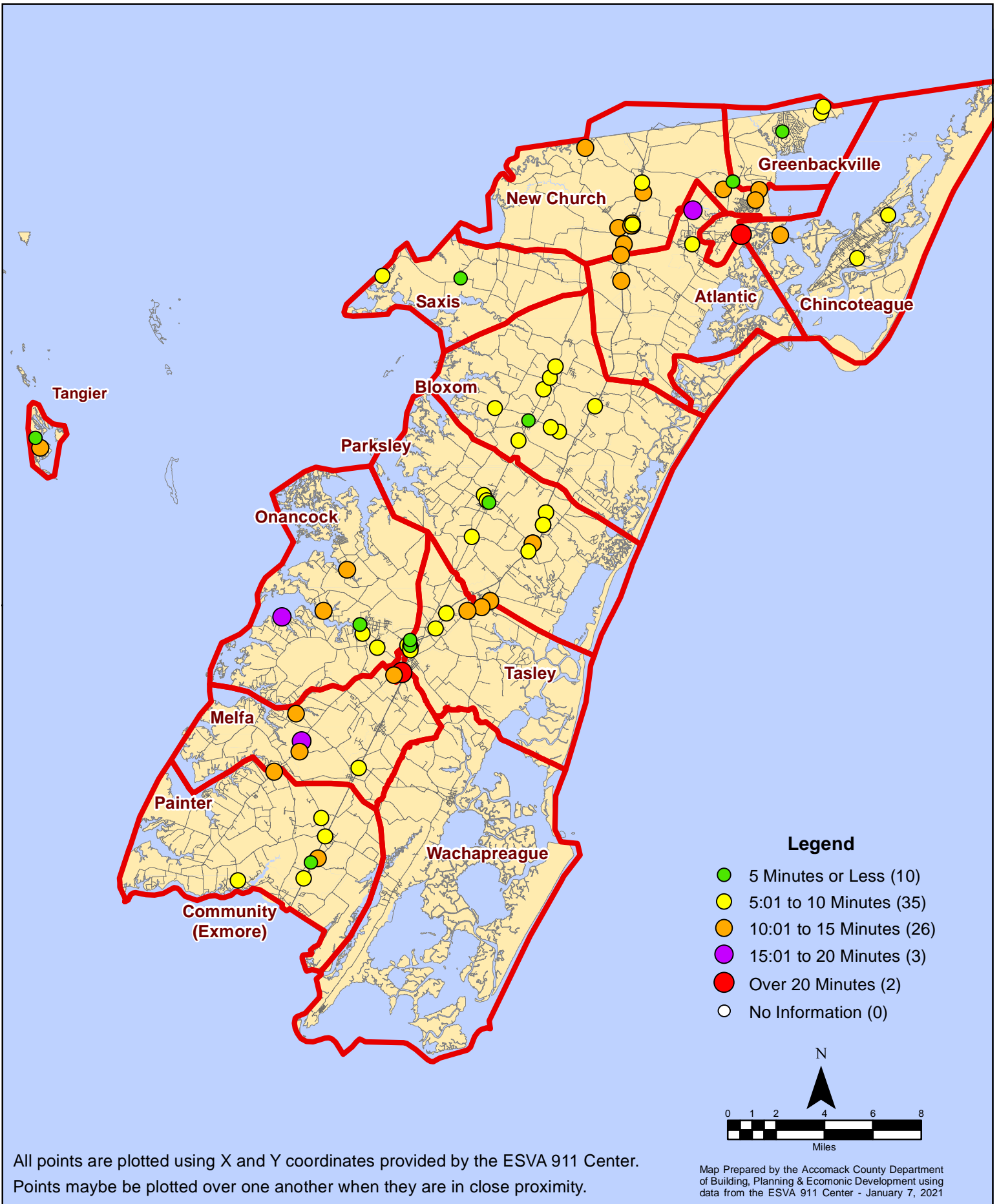
# November 2020 Fire Calls By Type



All points are plotted using X and Y coordinates provided by the ESVA 911 Center. Points may be plotted over one another when they are in close proximity.

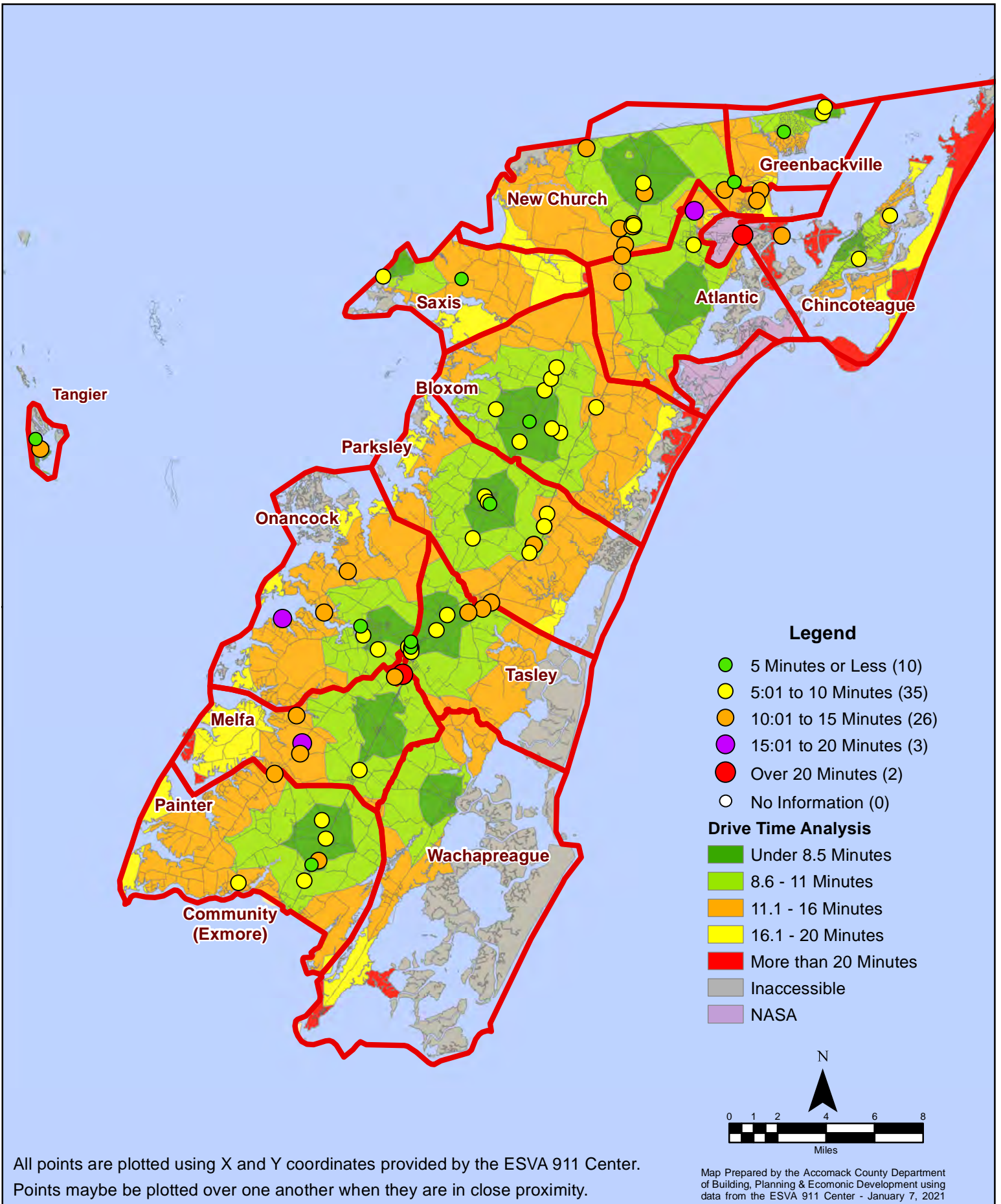
Map Prepared by the Accomack County Department of Building, Planning & Economic Development using data from the ESVA 911 Center - January 7, 2021

# November 2020 Fire Calls By Response Time



All points are plotted using X and Y coordinates provided by the ESVA 911 Center. Points may be plotted over one another when they are in close proximity.

# November 2020 Fire Calls By Response Time



All points are plotted using X and Y coordinates provided by the ESVA 911 Center. Points may be plotted over one another when they are in close proximity.