

**Fire - Performance Measure Data**

District	Total Calls	Greater than 20 min. Response	%	Max. Response Time	NORS
New Church	10	0	100%	18:20	0
Greenbackville	2	0	100%	12:09	0
Chincoteague	N/A	N/A	N/A	N/A	N/A
Atlantic	32	1	97%	20:49	0
Saxis	2	0	100%	N/A	0
Bloxom	14	0	100%	18:37	0
Parksley	11	0	100%	13:11	0
Tasley	2	0	100%	10:14	0
Onancock	5	0	100%	15:12	0
Melfa	15	1	93%	27:38	0
Wachapreague	0	0	N/A	N/A	0
Painter	10	0	100%	13:20	0
Onley	1	0	100%	18:38	0
Tangier	0	0	N/A	N/A	0
Totals:	104	2	98%		0

Chincoteague Data Not Available

**EMS - Performance Measure Data**

District	Total Calls	Career	Combination	Greater than 20 min. Response	%	Max. Response Time	NORS
Greenbackville	12	4	6	2	83%	41:45	3
Chincoteague	N/A	N/A	N/A	N/A	N/A	N/A	N/A
Saxis	6	2	0	1	83%	23:47	1
Bloxom	57	24	20	7	88%	26:54	8
Parksley	96	32	60	3	97%	24:31	0
Onancock	47	21	31	1	98%	26:49	0
Melfa	75	14	1	5	93%	31:17	0
Wachapreague	15	3	3	1	93%	22:45	2
Onley	54	28	42	0	100%	18:37	0
Oak Hall	88	31	52	9	90%	32:25	0
Tangier	7	0	5	1	86%	28:02	0
Community (Exmore)	12	N/A	N/A	1	92%	24:25	2
Totals	469	159	220	31	93%		16

Chincoteague Data Not Available

**EMS Mutual Aid Data**

Station Receiving Aid

Station : Giving Aid	Greenbackville	Chincoteague	Saxis	Bloxom	Parksley	Onancock	Melfa	Wachapreague	Onley	Oak Hall	Community (Exmore)	NORS	2nd Call	3rd Call
Greenbackville									2			3	0	0
Chincoteague									3			n/a	n/a	n/a
Saxis									1			1	0	0
Bloxom				2								8	4	0
Parksley			7						1			0	6	0
Onancock							2					0	3	0
Melfa					2				1			0	2	0
Wachapreague				1								2	0	0
Onley			1	2	1	1	1					0	2	0
Oak Hall	3	1	5									0	7	0
Community (Exmore)						1	1					2	0	0
Northampton County										1				
Total	3	n/a	1	13	5	3	2	2	7	2		16	24	0

**September 2012**

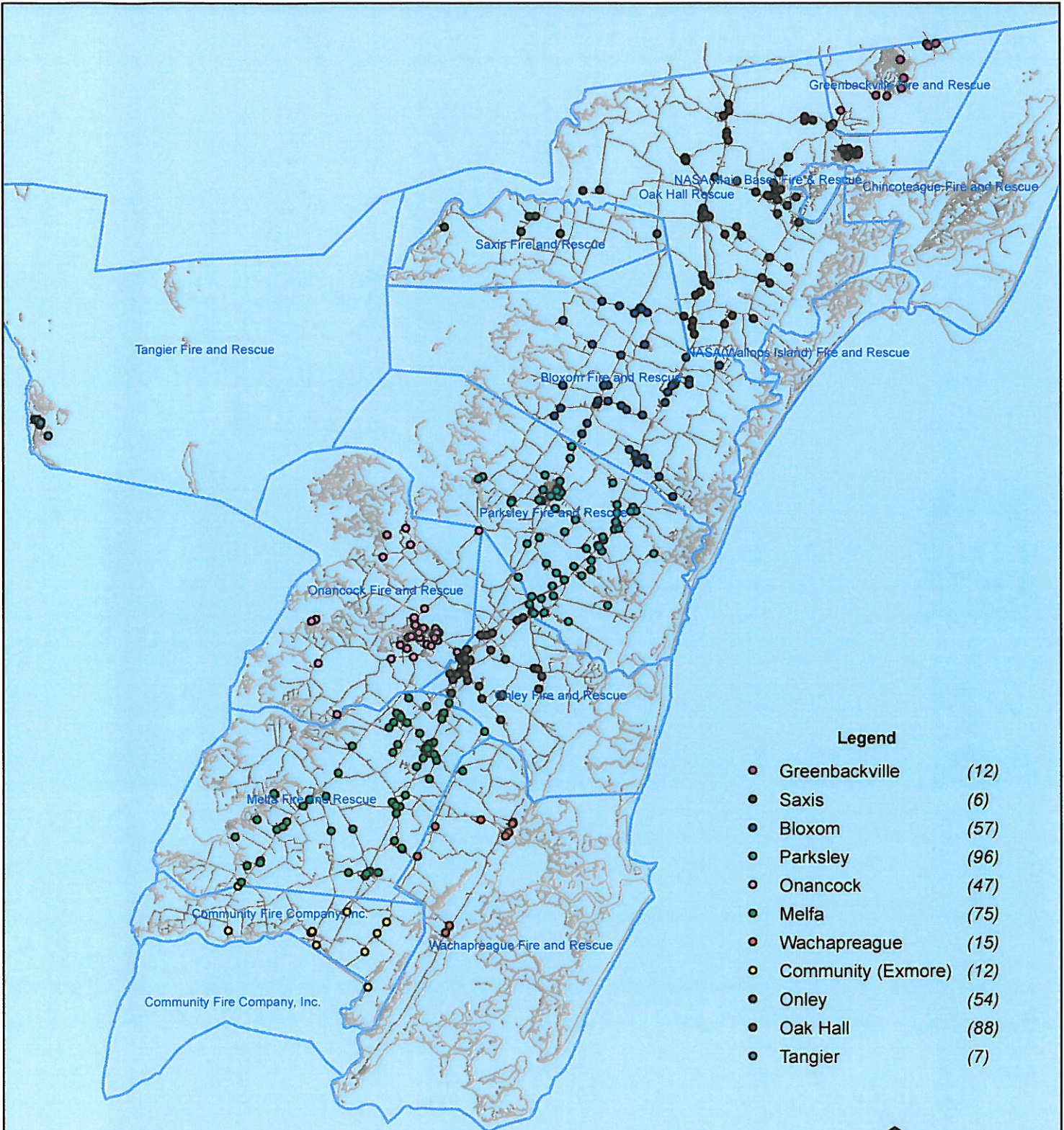
NORS = No Response. Call was handled by another station/agency.

2nd Call = 2nd Ambulance call received while First Ambulance was busy on another call.

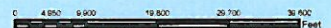
3rd Call = 3rd ambulance call received while First and Second Ambulances were on other call.

This information was prepared using data supplied by the Eastern Shore of Virginia 911 Center  
 This information is original incident data only and may not be representative of all units or stations who responded to an incident.

# September 2012 EMS Calls By District



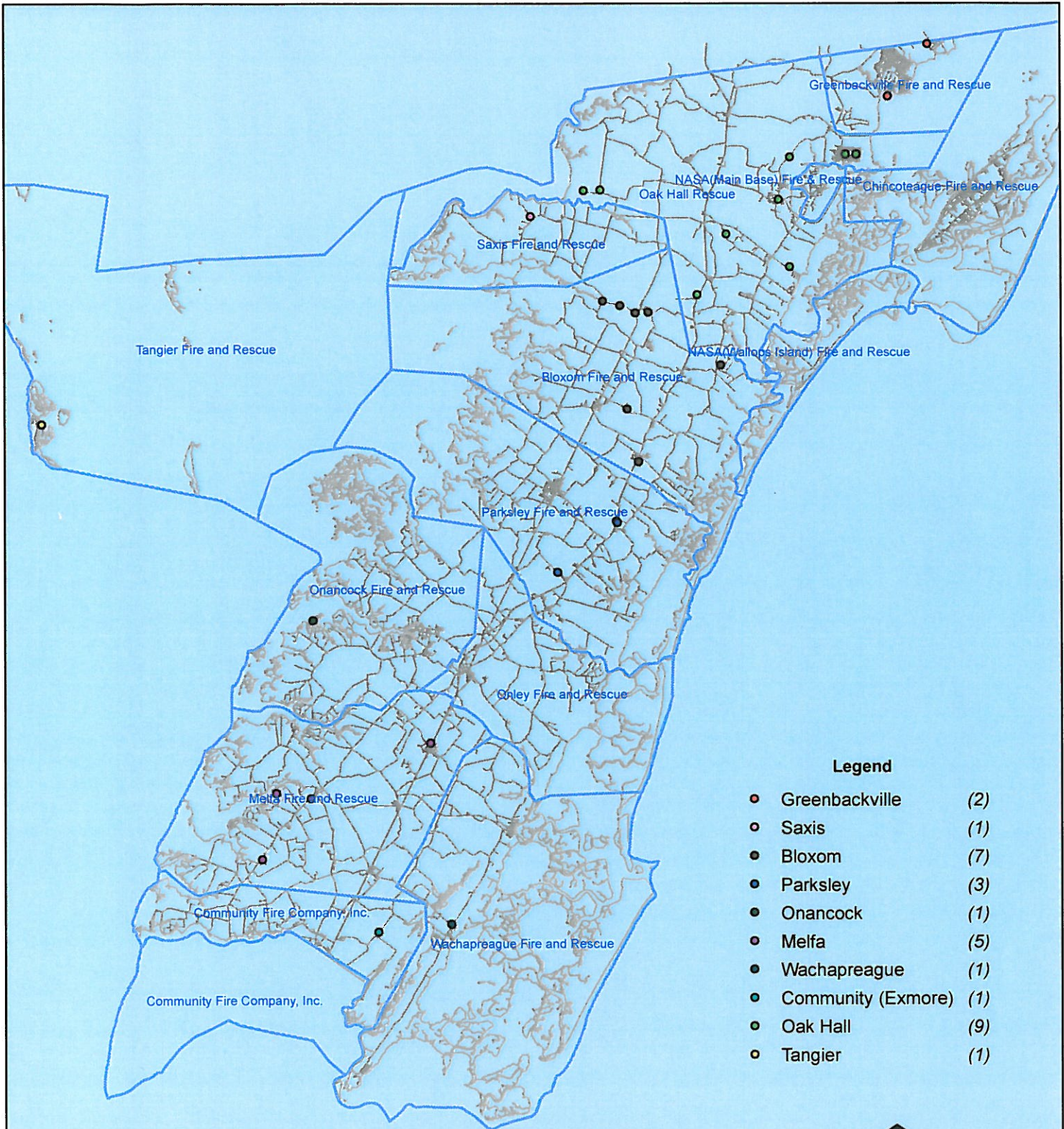
No Data Available For Chincoteague



All points are plotted using X and Y coordinates provided by the ESVA 911 Center. Points may be plotted over one another when they are in close proximity.

Map Prepared using Data from the ESVA 911 Center

# September 2012 EMS Calls With Response Time Greater Than 20 Mins.



No Data Available For Chincoteague

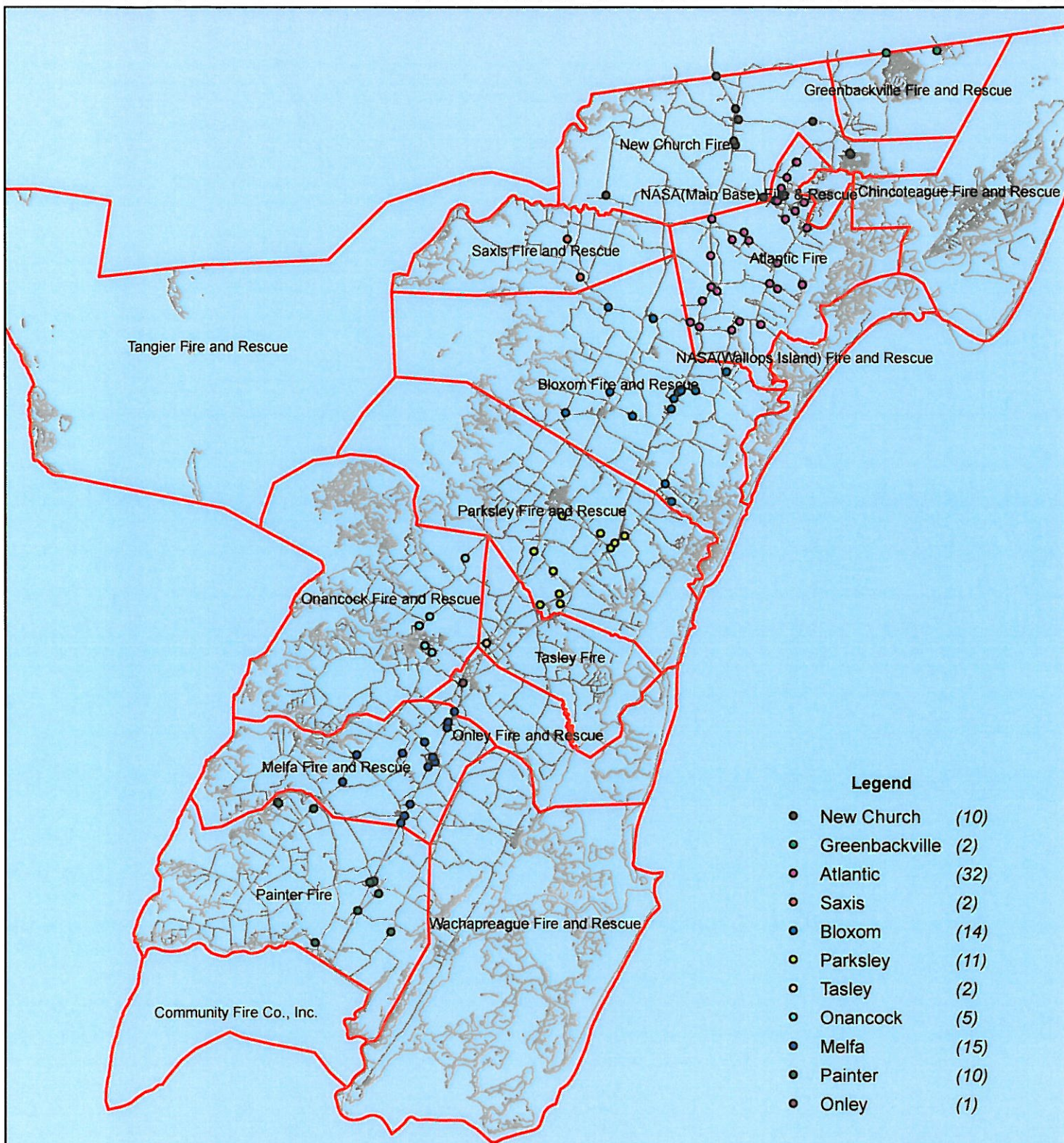


0 5,000 10,000 20,000 30,000 40,000 Feet

All points are plotted using X and Y coordinates provided by the ESVA 911 Center. Points may be plotted over one another when they are in close proximity.

Map Prepared using Data from the ESVA 911 Center

# September 2012 Fire Calls By District



No Data Available For Chincoteague

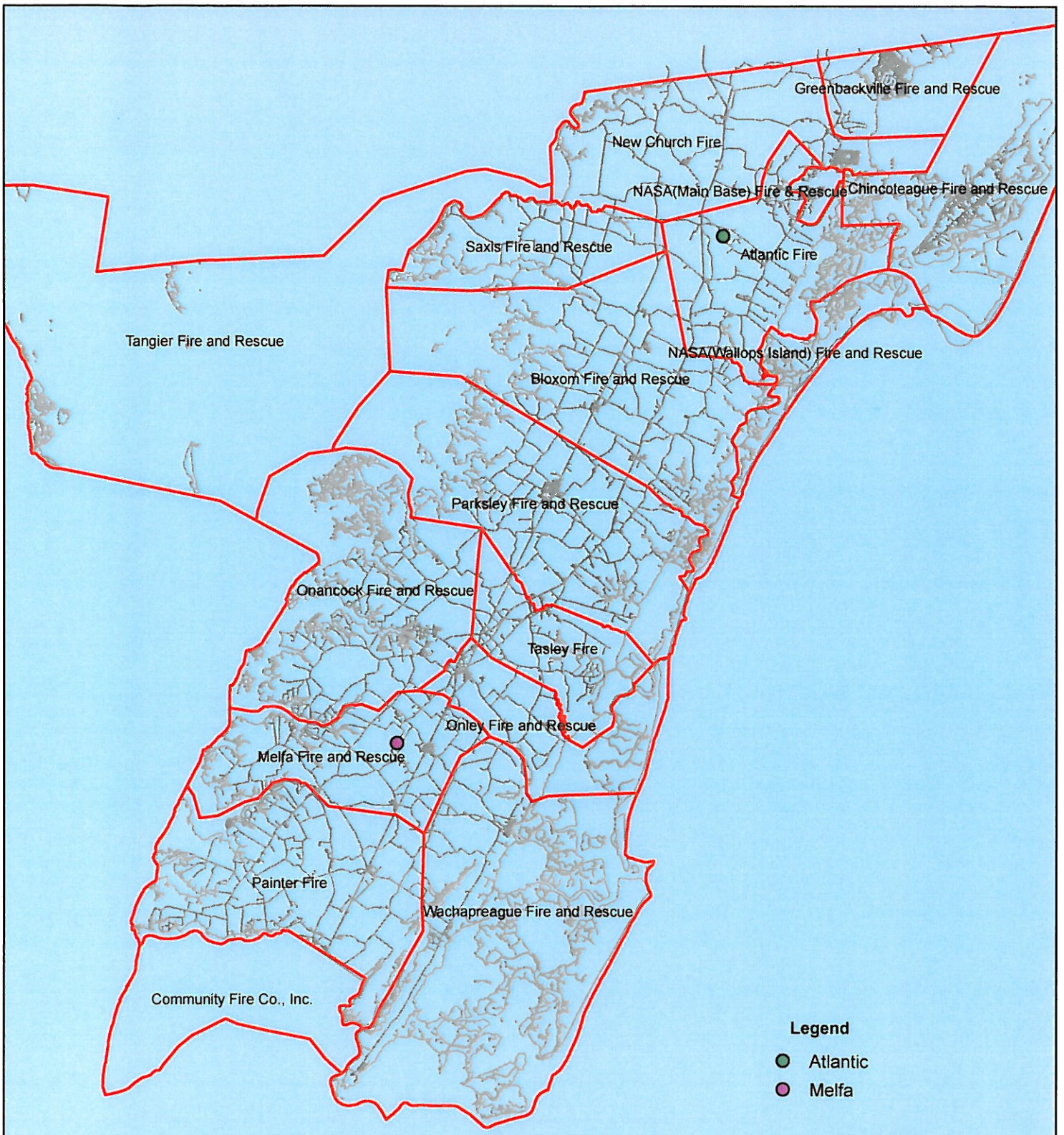


All points are plotted using X and Y coordinates provided by the ESVA 911 Center. Points may be plotted over one another when they are in close proximity.

0 4,950 9,900 19,800 29,700 39,600 Feet

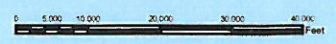
Map Prepared using Data from the ESVA 911 Center

# September 2012 Fire Calls With Response Time Greater Than 20 Mins.



No Data Available For Chincoteague

- Legend**
- Atlantic
  - Melfa



All points are plotted using X and Y coordinates provided by the ESVA 911 Center. Points maybe be plotted over one another when they are in close proximity.

Map Prepared using Data from the ESVA 911 Center