

**Fire - Performance Measure Data**

District	Total Calls	Greater than 20 min. Response	%	Max. Response Time	NORS
New Church	11	1	91%	23:35	0
Greenbackville	3	0	100%	2:55	0
Chincoteague	N/A	N/A	N/A	N/A	N/A
Atlantic	31	0	100%	16:33	0
Saxis	6	0	100%	16:47	0
Bloxom	8	1	88%	21:28	0
Parksley	19	0	100%	15:44	0
Tasley	8	0	100%	11:34	0
Onancock	5	0	100%	10:41	0
Melfa	9	0	100%	17:34	0
Wachapreague	2	0	N/A	8:03	0
Painter	8	0	100%	15:31	0
Onley	6	0	100%	11:16	0
Tangier	1	0	N/A	6:34	0
Totals:	117	2	98%		0

Chincoteague Data Not Available

**EMS - Performance Measure Data**

District	Total Calls	Career	Combination	Greater than 20 min. Response	%	Max. Response Time	NORS
Greenbackville	12	3	9	3	75%	26:14	3
Chincoteague	N/A	N/A	N/A	N/A	N/A	N/A	N/A
Saxis	5	0	1	1	80%	22:35	2
Bloxom	52	30	3	7	87%	27:43	11
Parksley	85	20	87	1	99%	24:41	0
Onancock	50	22	36	0	100%	18:04	0
Melfa	81	27	0	0	100%	20:00	0
Wachapreague	17	5	8	0	100%	18:11	0
Onley	36	10	41	0	100%	10:59	0
Oak Hall	70	32	54	11	84%	44:43	0
Tangier	11	0	0	0	100%	11:25	0
Community (Exmore)	11	N/A	N/A	1	91%	20:02	4
Totals	430	149	239	24	94%		20

Chincoteague Data Not Available

**EMS Mutual Aid Data**

Station Receiving Aid

Station : Giving Aid	Greenbackville	Chincoteague	Saxis	Bloxom	Parksley	Onancock	Melfa	Wachapreague	Onley	Oak Hall	Community (Exmore)	NORS	2nd Call	3rd Call
Greenbackville									1			3	0	0
Chincoteague									2			n/a	n/a	n/a
Saxis												2	0	0
Bloxom	1								3			11	5	0
Parksley				10								0	2	2
Onancock					1			1				0	1	0
Melfa						1						0	2	0
Wachapreague												0	0	0
Onley						1						0	1	0
Oak Hall	3	1	6									0	6	0
Community (Exmore)							2					4	0	0
Northampton Co.										4				
Total	3	n/a	2	16	4	1	2	0	1	6	4	20	17	2

June 2012

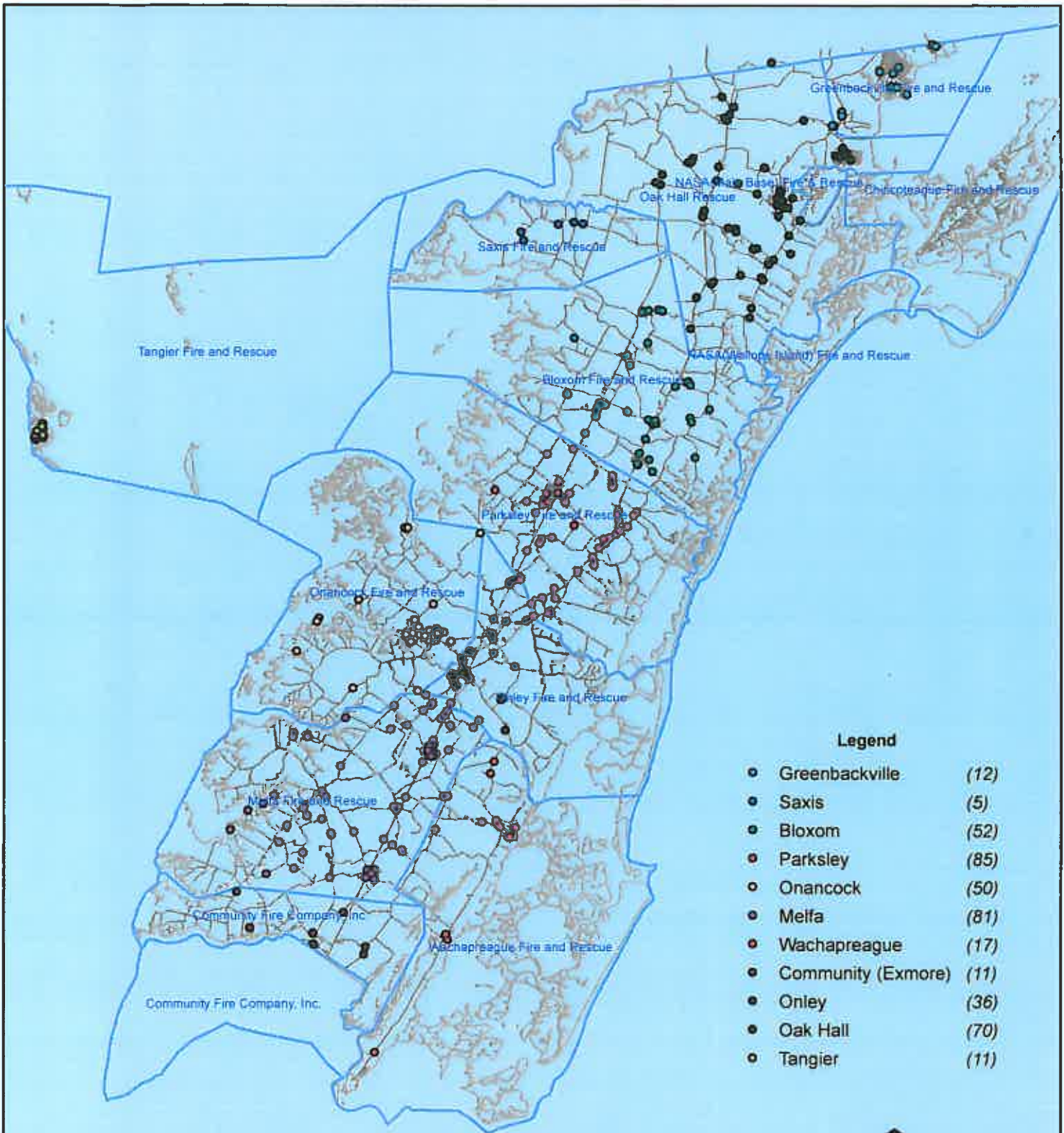
NORS = No Response. Call was handled by another station/agency.

2nd Call = 2nd Ambulance call received while First Ambulance was busy on another call.

3rd Call = 3rd ambulance call received while First and Second Ambulances were on other call.

This information was prepared using data supplied by the Eastern Shore of Virginia 911 Center  
 This information is original incident data only and may not be representative of all units or stations who responded to an incident.

# June 2012 EMS Calls By District



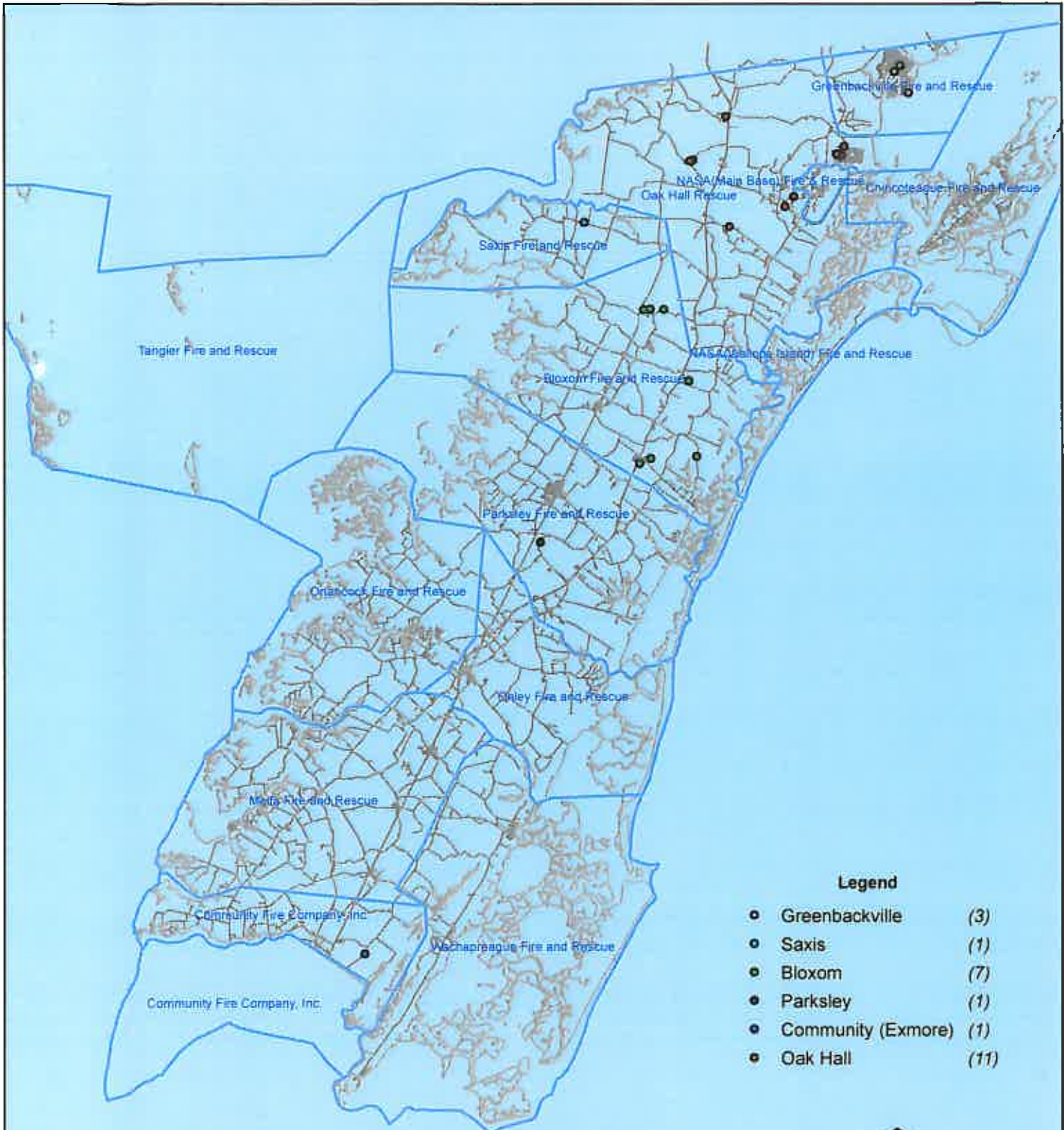
No Data Available For Chincoteague



All points are plotted using X and Y coordinates provided by the ESVA 911 Center. Points may be plotted over one another when they are in close proximity.

Map Prepared using Data from the ESVA 911 Center

# June 2012 EMS Calls With Response Time Greater Than 20 Mins.



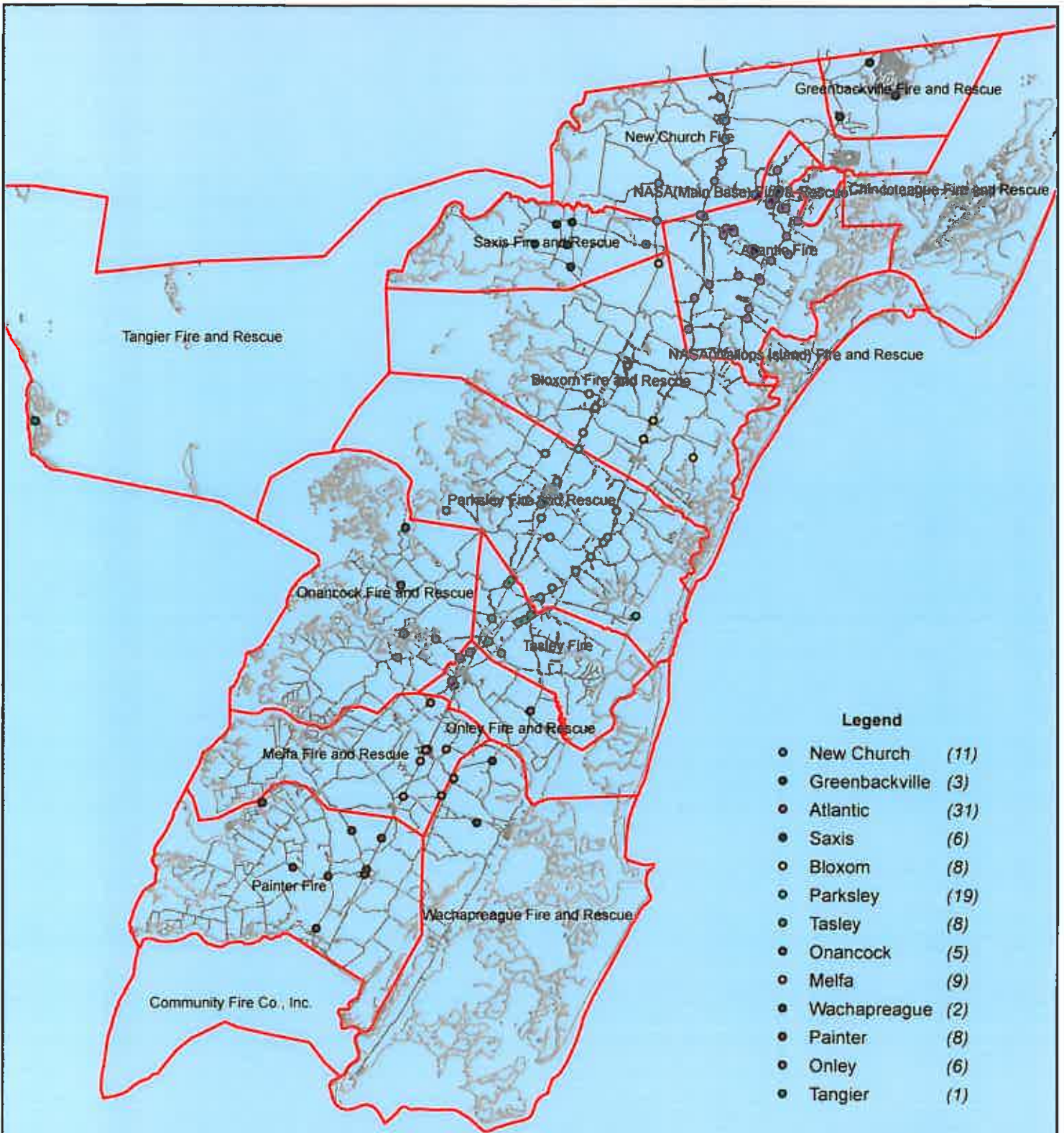
No Data Available For Chincoteague



All points are plotted using X and Y coordinates provided by the ESVA 911 Center. Points may be plotted over one another when they are in close proximity.

Map Prepared using Data from the ESVA 911 Center

# June 2012 Fire Calls By District



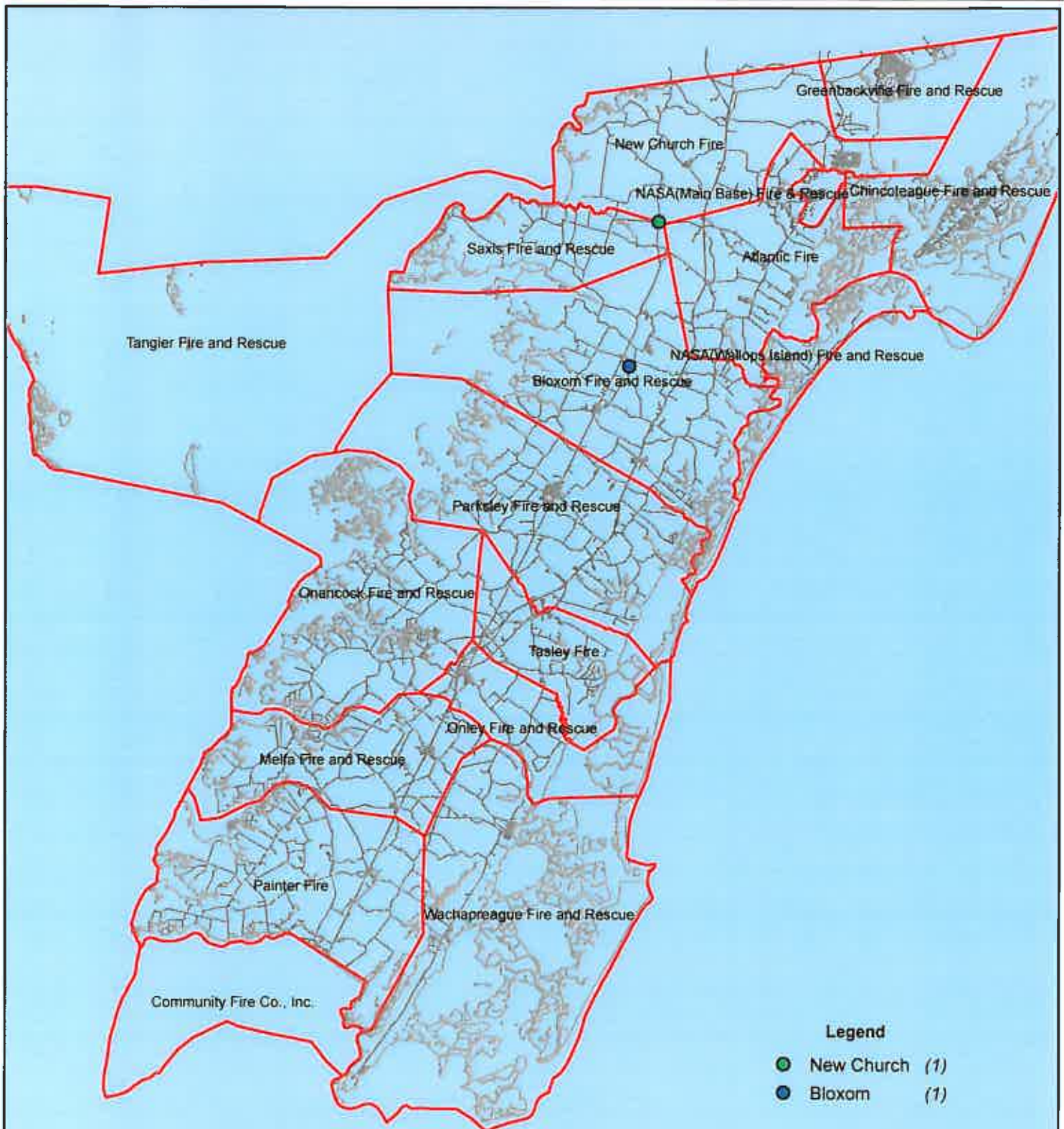
No Data Available For Chincoteague



All points are plotted using X and Y coordinates provided by the ESVA 911 Center. Points may be plotted over one another when they are in close proximity.

Map Prepared using Data from the ESVA 911 Center

# June 2012 Fire Calls With Response Time Greater Than 20 Mins.



No Data Available For Chincoteague



All points are plotted using X and Y coordinates provided by the ESVA 911 Center. Points may be plotted over one another when they are in close proximity.

Map Prepared using Data from the ESVA 911 Center