

Fire - Performance Measure Data

District	Total Calls	Greater than 20 min. Response	%	Max. Response Time	NORS
New Church	11	0	100%	17:43	0
Greenbackville	1	0	100%	12:42	0
Chincoteague	N/A	N/A	N/A	N/A	N/A
Atlantic	24	0	100%	15:20	0
Saxis	2	0	100%	9:22	0
Bloxom	12	0	100%	16:48	0
Parksley	13	0	100%	11:36	0
Tasley	4	0	100%	13:22	0
Onancock	7	0	100%	11:39	0
Melfa	12	0	100%	16:56	0
Wachapreague	1	0	100%	8:14	0
Painter	14	0	100%	14:21	0
Onley	7	0	100%	13:03	0
Tangier	0	0	N/A	N/A	0
Totals:	108	0	100%		0

Chincoteague Data Not Available

EMS - Performance Measure Data

District	Total Calls	Career	Combination	Greater than 20 min. Response	%	Max. Response Time	NORS
Greenbackville	10	4	6	5	50%	41:41	3
Chincoteague	N/A	N/A	N/A	N/A	N/A	N/A	N/A
Saxis	16	4	5	3	81%	35:14	3
Bloxom	82	37	28	11	87%	31:02	13
Parksley	103	42	59	5	95%	54:36	2
Onancock	54	25	30	0	100%	19:35	0
Melfa	74	17	0	4	95%	25:02	1
Wachapreague	11	4	2	1	91%	20:06	3
Onley	45	16	36	0	100%	19:09	0
Oak Hall	99	35	63	9	91%	38:58	0
Tangier	10	0	0	0	100%	10:07	0
Community (Exmore)	16	4	0	0	100%	17:54	1
Totals	520	188	229	38	93%		26

Chincoteague Data Not Available

EMS Mutual Aid Data

Station Receiving Aid

Station : Giving Aid	Greenbackville	Chincoteague	Saxis	Bloxom	Parksley	Onancock	Melfa	Wachapreague	Onley	Oak Hall	Community (Exmore)	NORS	2nd Call	3rd Call
Greenbackville								2				3	0	
Chincoteague								1				n/a	n/a	n/a
Saxis				2								3	0	
Bloxom			2		5			8				13	7	1
Parksley			18									2	5	0
Onancock						1		5				0	8	0
Melfa					2		3	1				1	2	0
Wachapreague									1			3	0	0
Onley						6						0	7	0
Oak Hall	3		1	3								0	11	0
Community (Exmore)												1	0	0
Northampton County						1						1		
Total	3	n/a	3	21	7	8	1	3	7	11	1	26	40	1

January 2013

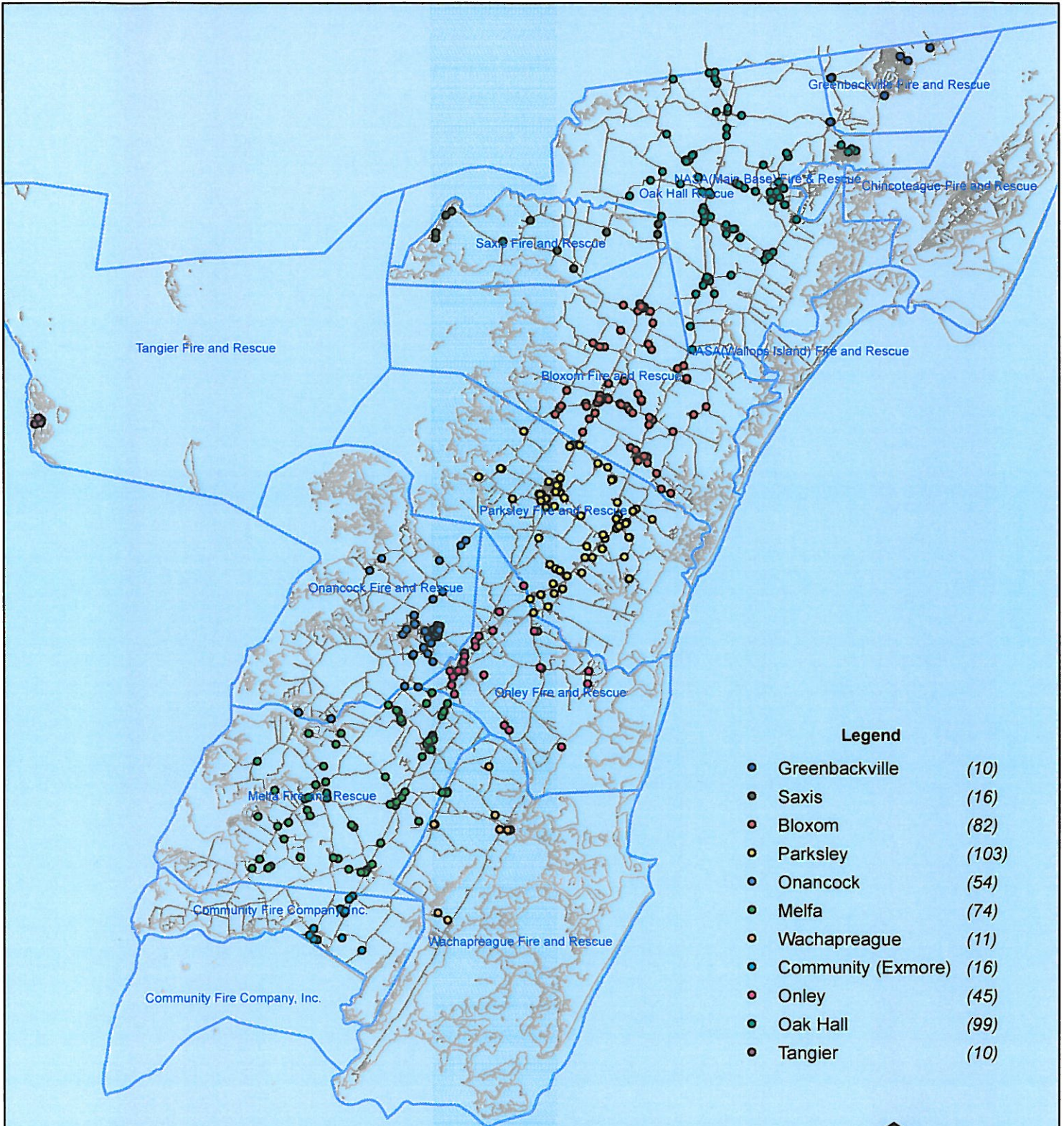
NORS = No Response. Call was handled by another station/agency.

2nd Call = 2nd Ambulance call received while First Ambulance was busy on another call.

3rd Call = 3rd ambulance call received while First and Second Ambulances were on other call.

This information was prepared using data supplied by the Eastern Shore of Virginia 911 Center
 This information is original incident data only and may not be representative of all units or stations who responded to an incident.

January 2013 EMS Calls By District



No Data Available For Chincoteague

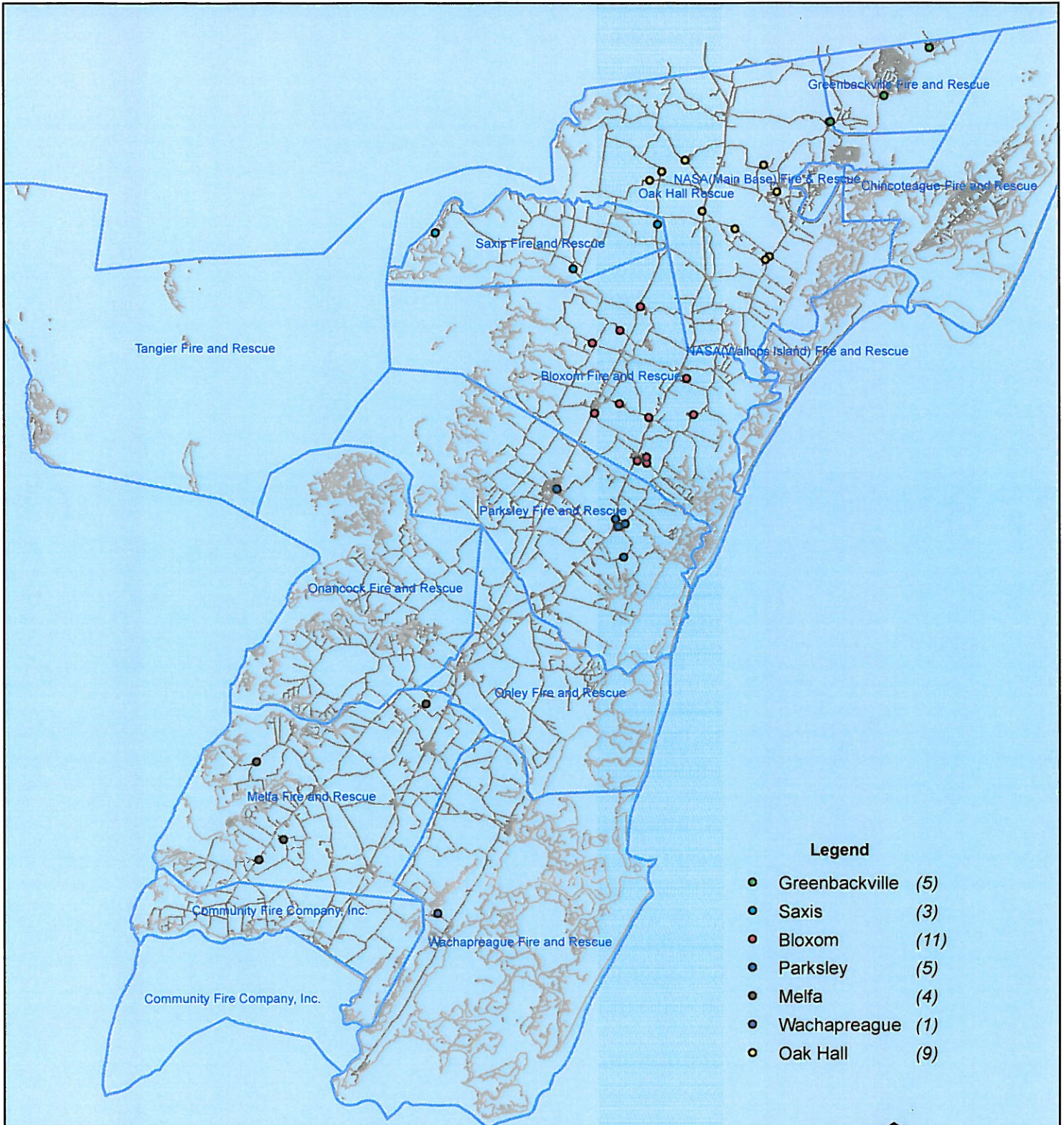


0 4,915 9,830 19,660 29,490 39,300 Feet

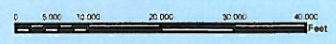
All points are plotted using X and Y coordinates provided by the ESVA 911 Center. Points maybe be plotted over one another when they are in close proximity.

Map Prepared using Data from the ESVA 911 Center

January 2013 EMS Calls With Response Time Greater Than 20 Mins.



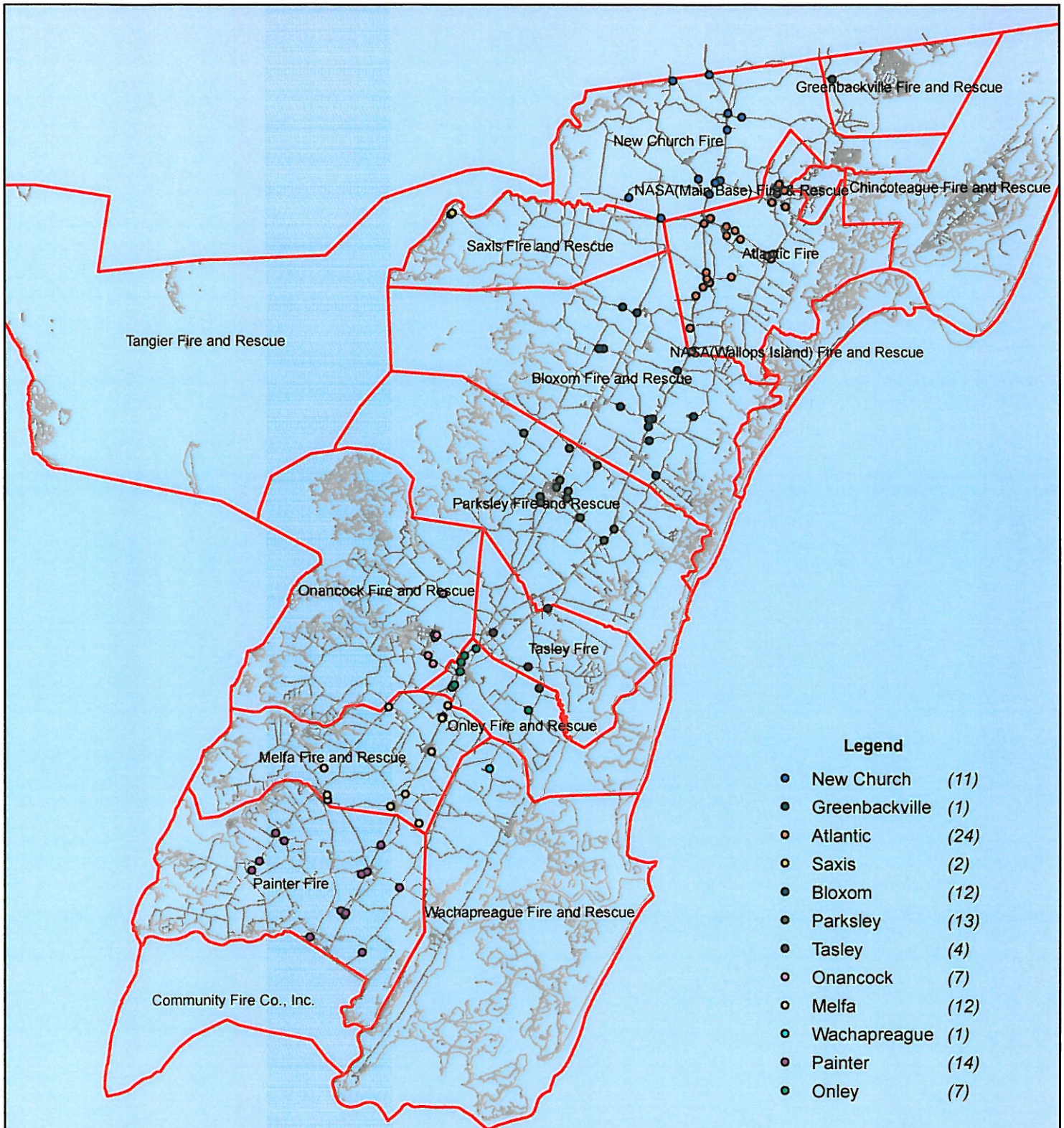
No Data Available For Chincoteague



All points are plotted using X and Y coordinates provided by the ESVA 911 Center. Points maybe be plotted over one another when they are in close proximity.

Map Prepared using Data from the ESVA 911 Center

January 2013 Fire Calls By District



No Data Available For Chincoteague



All points are plotted using X and Y coordinates provided by the ESVA 911 Center. Points maybe be plotted over one another when they are in close proximity.

