

# February 2021

Fire - Performance Measure Data *					
Response District	Total Calls in District	Greater than 20 min. Response Time	Longest Response Time	Calls Handled by other agency	Overall Station Benchmark %
New Church	9	0	0:17:44	1	100.0%
Greenbackville	1	0	0:16:53	0	100.0%
Chincoteague	6	0	0:11:44	1	100.0%
Atlantic	1	0	0:08:33	0	100.0%
Saxis	0	0	0	0	#DIV/0!
Bloxom	5	0	0:19:49	1	100.0%
Parksley	11	0	0:12:22	0	100.0%
Tasley	5	0	0:11:14	1	100.0%
Onancock	5	0	0:16:12	0	100.0%
Melfa	6	0	0:11:34	0	100.0%
Wachapreague	3	0	0:15:51	0	100.0%
Painter	5	0	0:10:51	0	100.0%
Tangier	0	0	0	0	#DIV/0!
<b>System Totals</b>	<b>57</b>	<b>0</b>	<b>0:19:49</b>	<b>4</b>	<b>100.0%</b>

EMS - Performance Measure Data						
Response District	Total Calls in District	Greater than 20 min. Response Time	Longest Response Time	Calls Handled by other agency	Station Benchmark Compliance %	Overall Station Reliability %
Greenbackville	12	3	0:28:47	8	75.0%	33.3%
Chincoteague	32	0	0:18:44	2	100.0%	93.8%
Saxis	13	0	0:13:09	0	100.0%	100.0%
Bloxom	27	0	0:14:00	1	100.0%	96.3%
Parksley	105	0	0:13:23	7	100.0%	93.3%
Onancock	75	0	0:18:57	2	100.0%	97.3%
Melfa	43	1	0:23:15	4	97.7%	90.7%
Wachapreague (Painter)	41	3	0:21:20	6	92.7%	85.4%
Oak Hall	70	1	0:36:48	8	98.6%	88.6%
Tangier	9	0	0:08:31	0	100.0%	100.0%
Community (Exmore)	13	0	0:10:24	1	100.0%	92.3%
<b>System Totals</b>	<b>440</b>	<b>8</b>	<b>0:36:48</b>	<b>39</b>	<b>98.2%</b>	<b>91.1%</b>

EMS Mutual Aid Data																
	Station Giving Aid												NORS	2nd Call	3rd Call	
	Greenbackville	Chincoteague	Saxis	Bloxom	Parksley	Onancock	Melfa	Wachapreague/Painter	Oak Hall	Community (Exmore)	Northampton	Wallops				
Greenbackville			1	1				6						8		
Chincoteague	1							1							2	
Saxis								1						1		
Bloxom																
Parksley				4		3								1	6	
Onancock					1	1									2	
Melfa						2	2							3	1	
Wachapreague (Painter)							4		2					2	4	
Oak Hall		2	4	1								1		4	2	2
Community (Exmore)								1							1	
Northampton Co.																
Wallops																
<b>Totals</b>	<b>1</b>	<b>2</b>	<b>5</b>	<b>6</b>	<b>1</b>	<b>5</b>	<b>5</b>	<b>3</b>	<b>8</b>	<b>2</b>	<b>0</b>	<b>1</b>	<b>19</b>	<b>18</b>	<b>2</b>	

Transport Destination			
Hospital Destination by Unit	Riverside - Shore Memorial	PRMC / Tidal Health	Other
Chincoteague	8	10	
Saxis	9	5	
Bloxom	19	1	
Parksley	71	1	
Onancock	58		
Melfa	31		
Wachapreague (Painter)	40		
Oak Hall	28	23	
Wallops		1	
<b>Totals</b>	<b>265</b>	<b>42</b>	<b>0</b>

**Benchmark** = The Accomack County Board of Supervisors established a 20 minute standard for emergency response.

**NORS** = No Response by station or the call was handled by another station or agency.

**2nd Call** = 2nd ambulance call received while first ambulance was on another call.

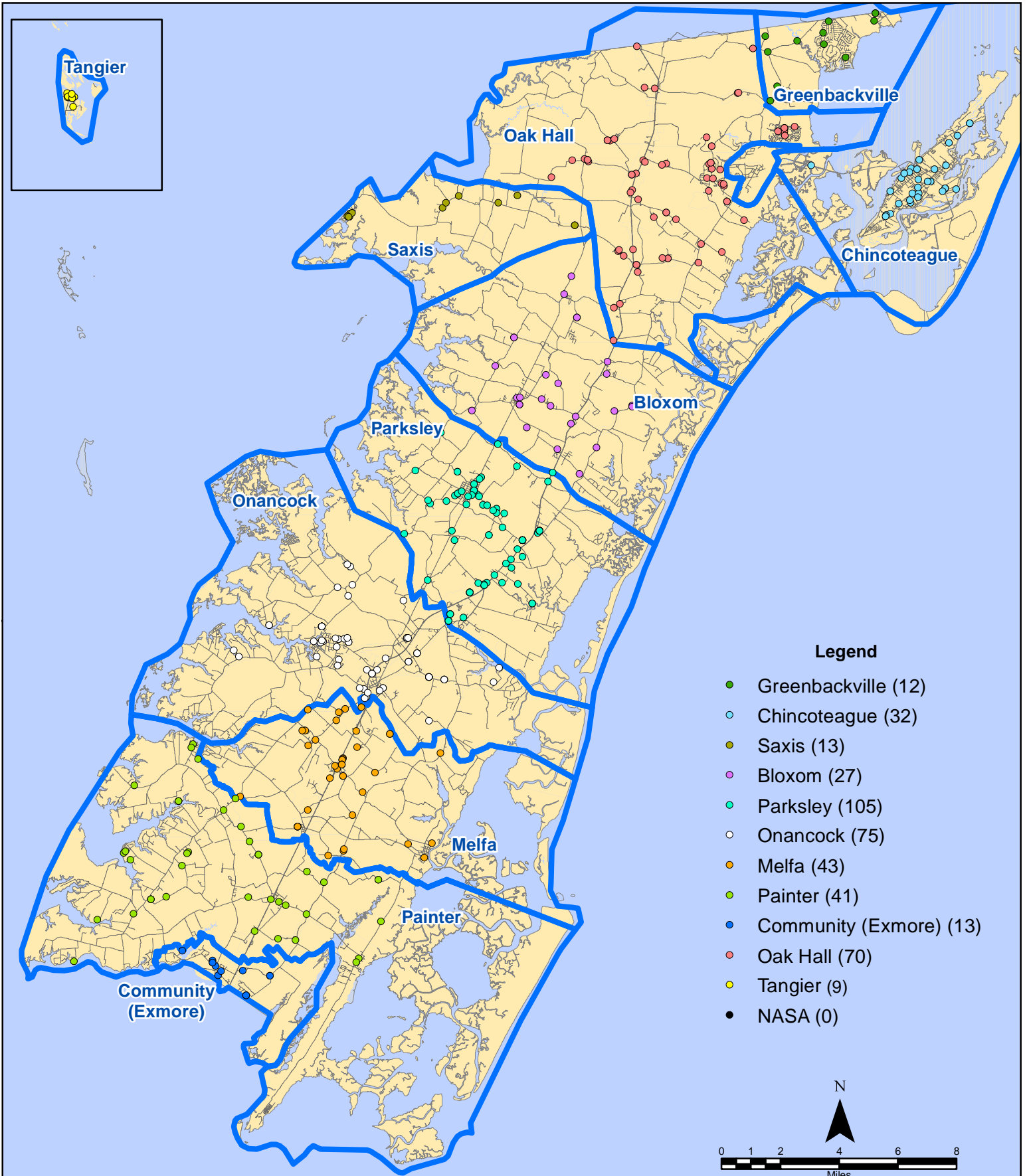
**3rd Call** = 3rd ambulance call received while first & second ambulances were on other calls.

\* This data excludes F1 Med (Medical Assist) calls in the Fire Data.

*This information was prepared using data supplied by the Eastern Shore of Virginia 911 Center. This information is original incident data only and may not be representative of all units and/or stations who responded to an incident.*

Station Receiving Aid

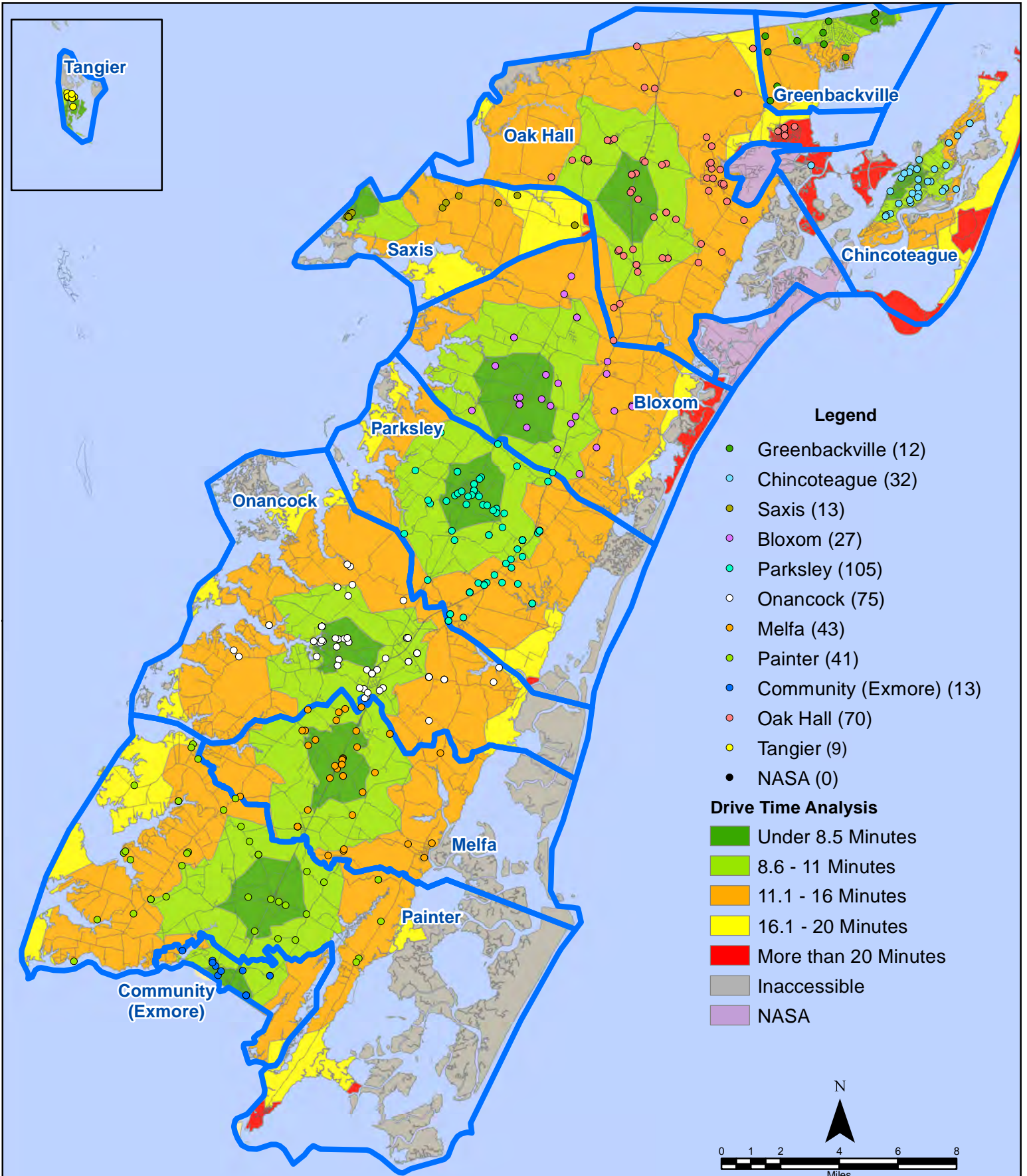
# February 2021 EMS Calls By District



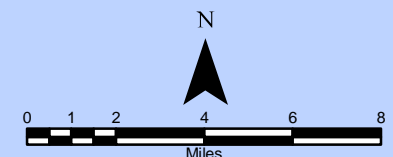
All points are plotted using X and Y coordinates provided by the ESVA 911 Center.  
Points may be plotted over one another when they are in close proximity.

Map Prepared by the Accomack County Department of Building, Planning & Economic Development using data from the ESVA 911 Center - March 4, 2021

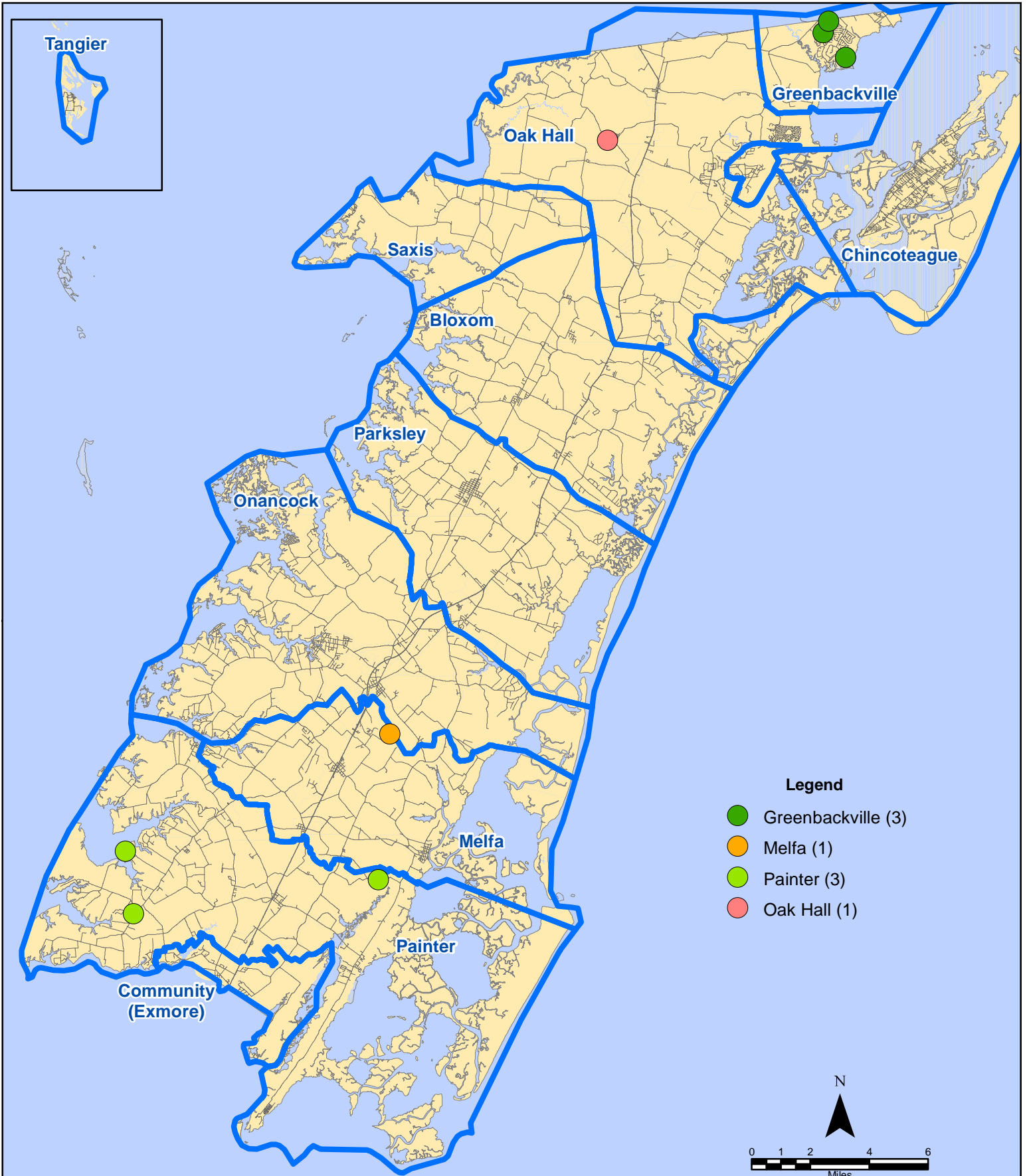
# February 2021 EMS Calls By District



All points are plotted using X and Y coordinates provided by the ESVA 911 Center. Points may be plotted over one another when they are in close proximity.



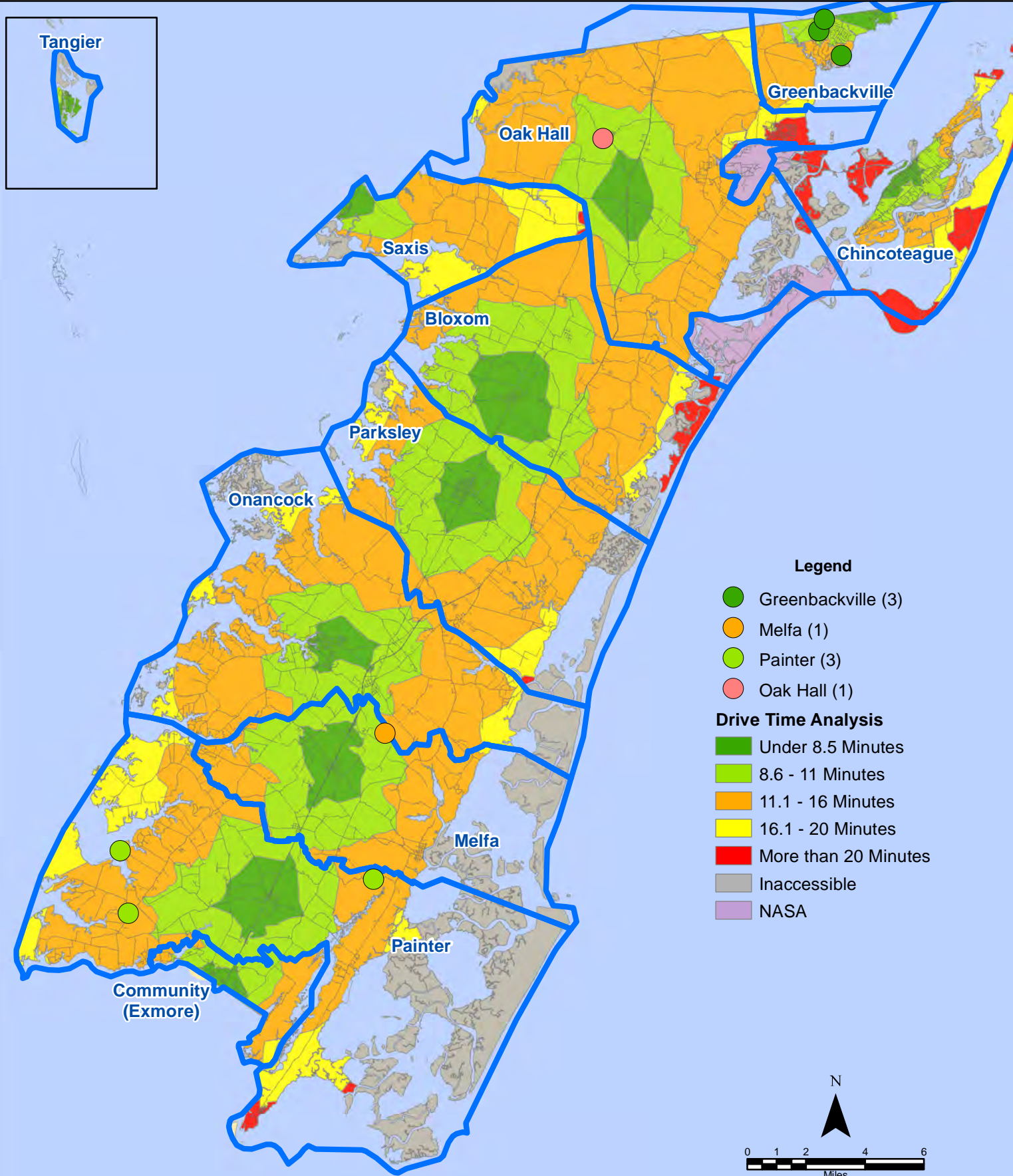
# February 2021 EMS Calls With Response Time Greater Than 20 Mins.



All points are plotted using X and Y coordinates provided by the ESVA 911 Center. Points may be plotted over one another when they are in close proximity.

Map Prepared by the Accomack County Department of Building, Planning & Economic Development using data from the ESVA 911 Center - March 4, 2021

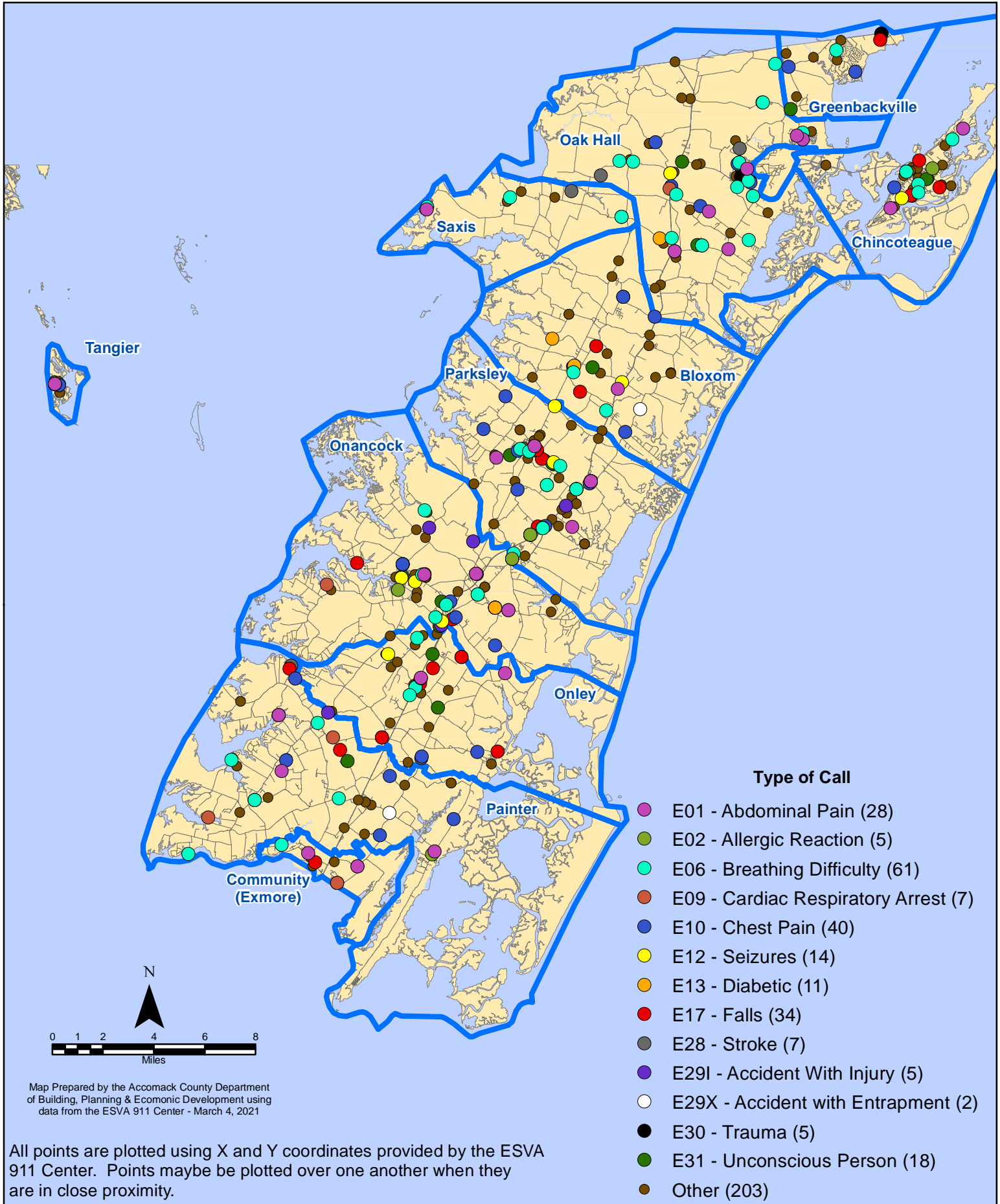
# February 2021 EMS Calls With Response Time Greater Than 20 Mins.



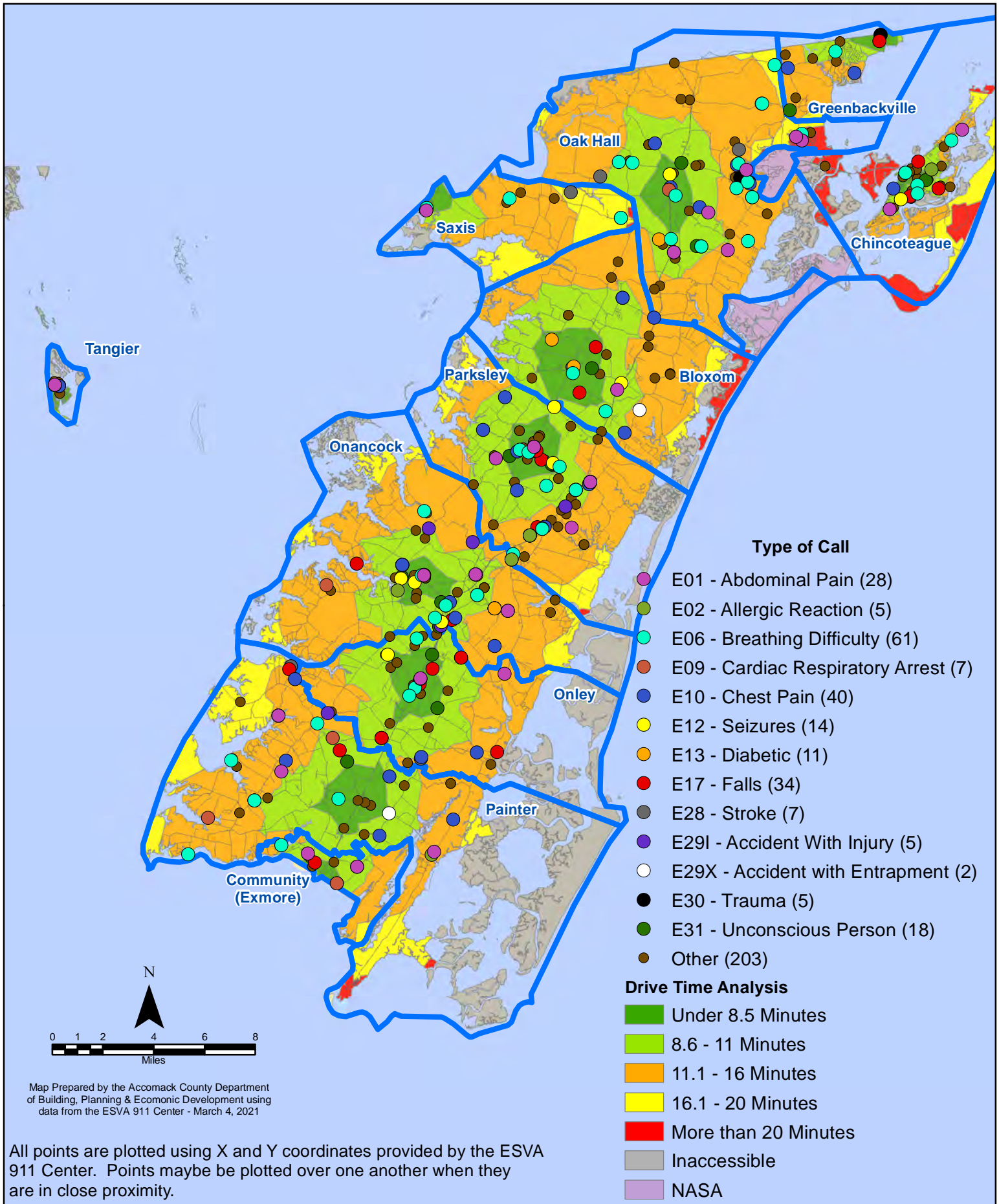
All points are plotted using X and Y coordinates provided by the ESVA 911 Center. Points may be plotted over one another when they are in close proximity.

Map Prepared by the Accomack County Department of Building, Planning & Economic Development using data from the ESVA 911 Center - March 4, 2021

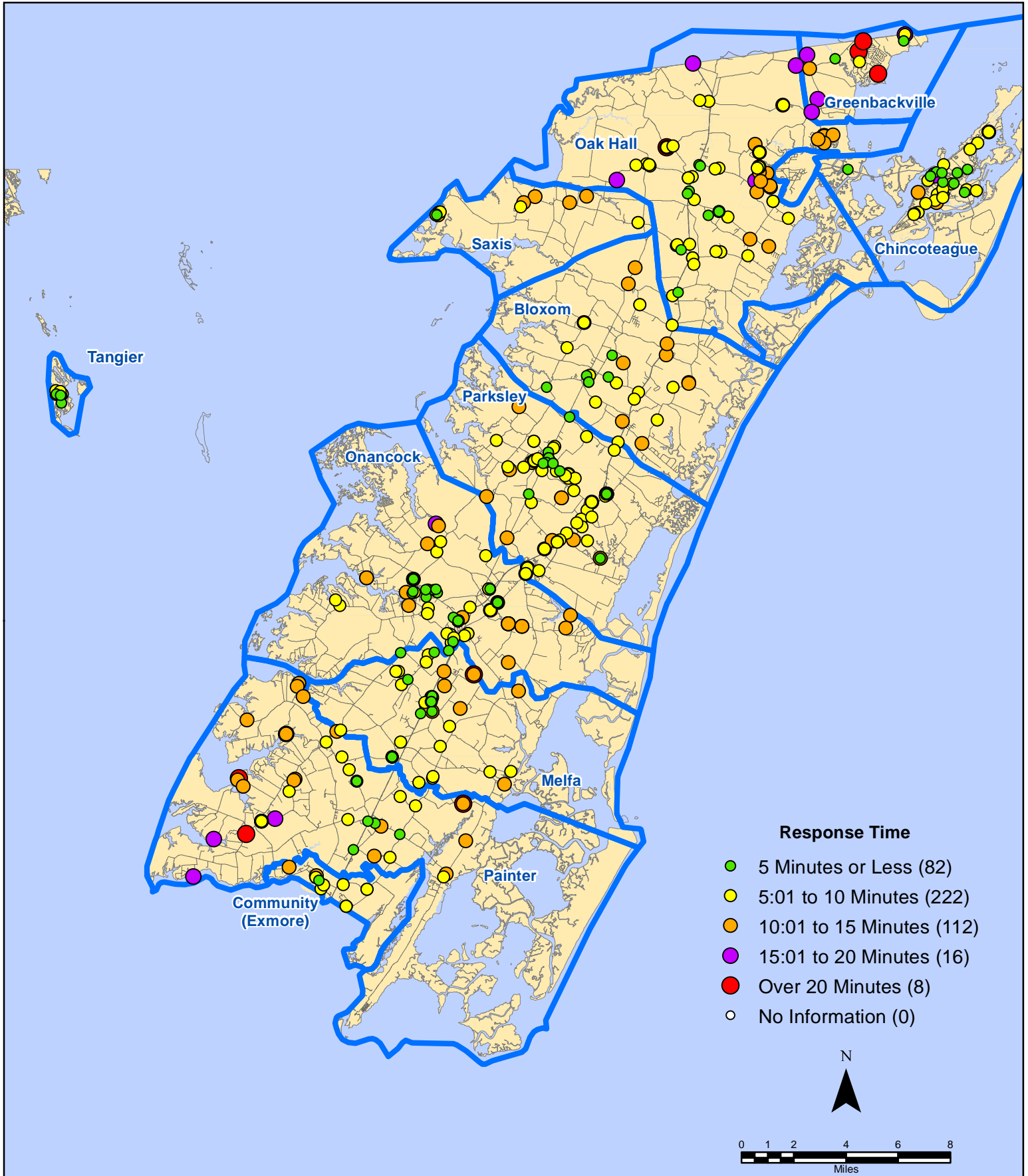
# February 2021 EMS Calls By Type



# February 2021 EMS Calls By Type



# February 2021 EMS Calls By Response Time

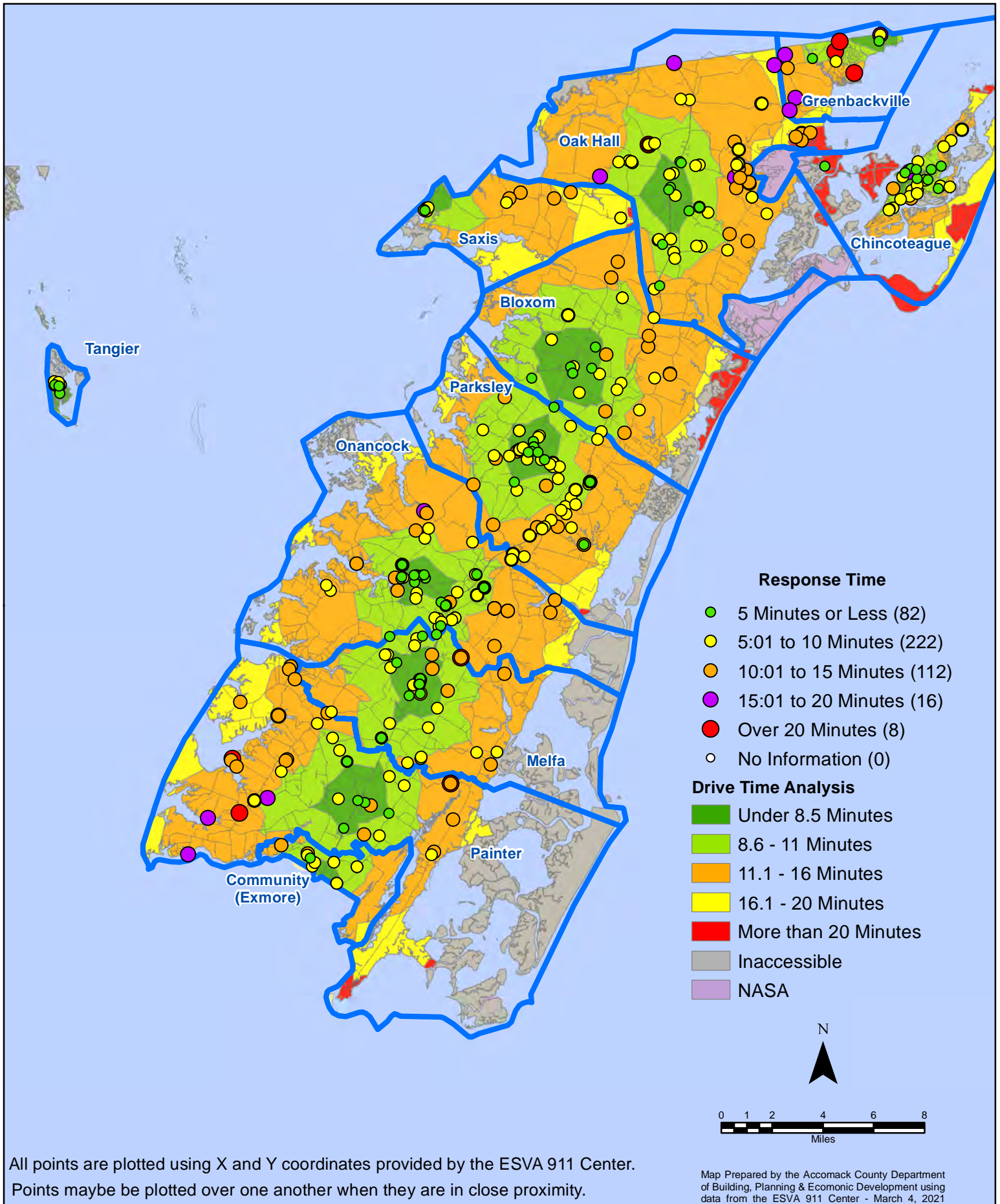


All points are plotted using X and Y coordinates provided by the ESVA 911 Center.  
Points may be plotted over one another when they are in close proximity.

Map Prepared by the Accomack County Department of Building, Planning & Economic Development using data from the ESVA 911 Center - March 4, 2021

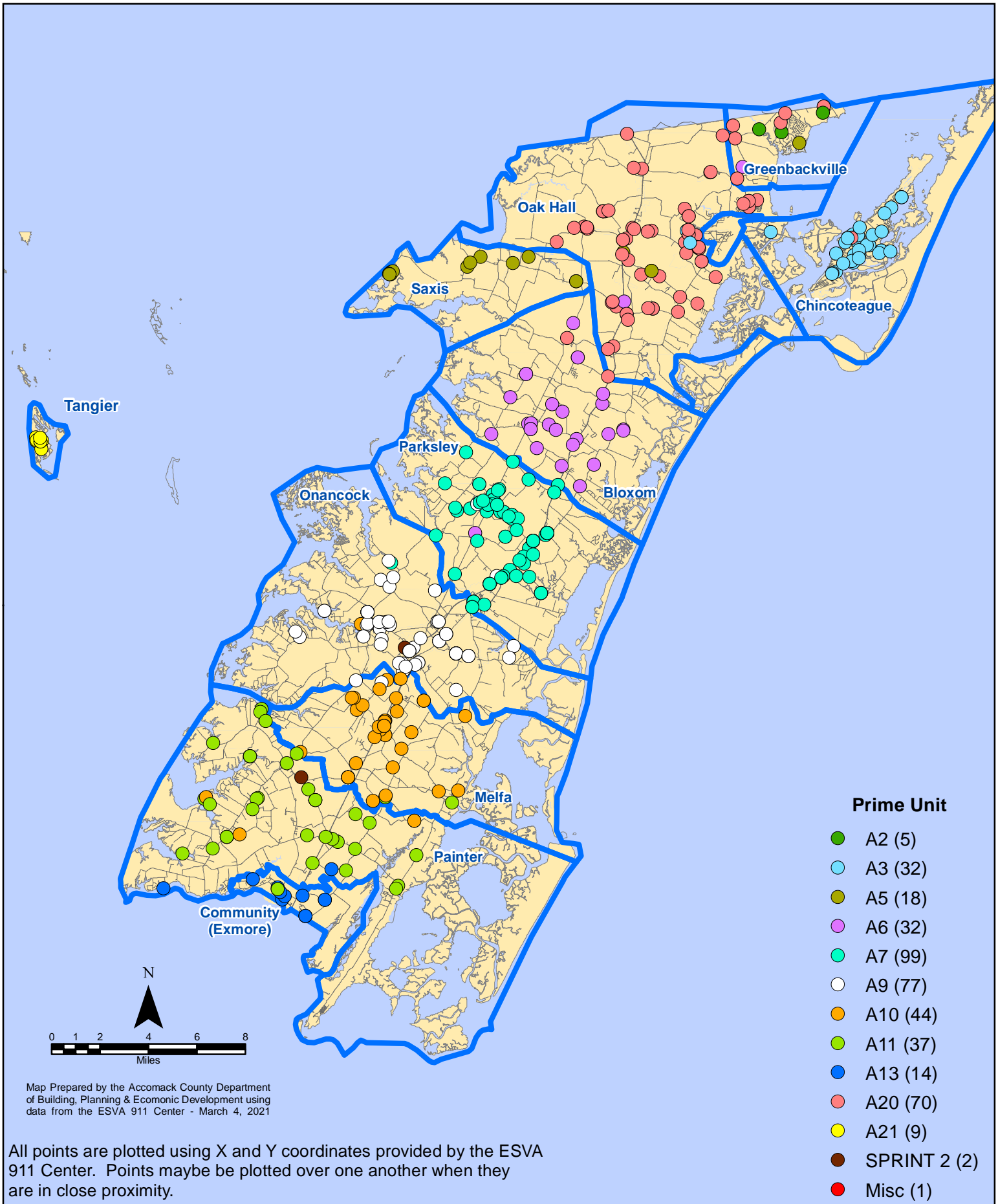


# February 2021 EMS Calls By Response Time

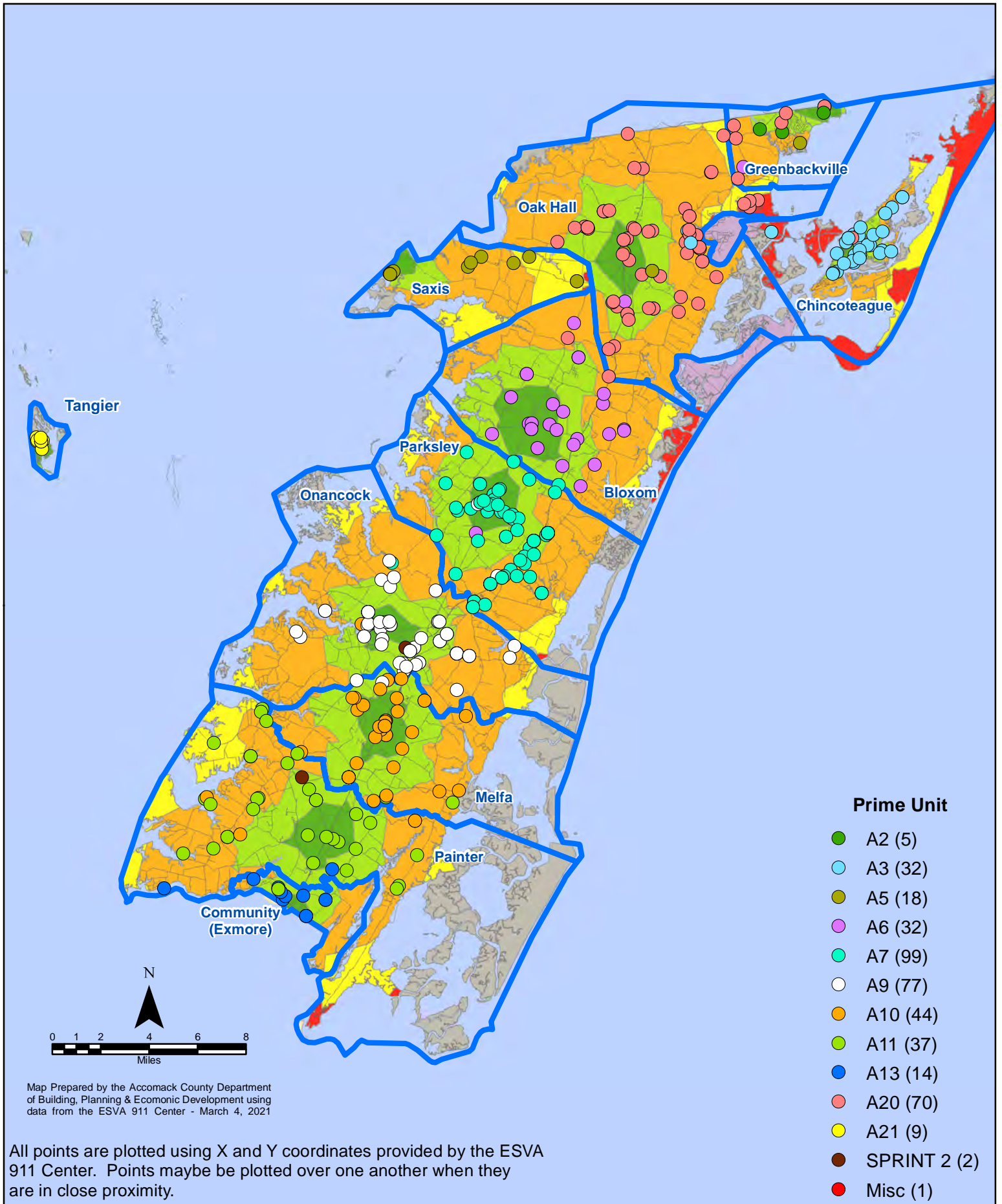


All points are plotted using X and Y coordinates provided by the ESVA 911 Center. Points may be plotted over one another when they are in close proximity.

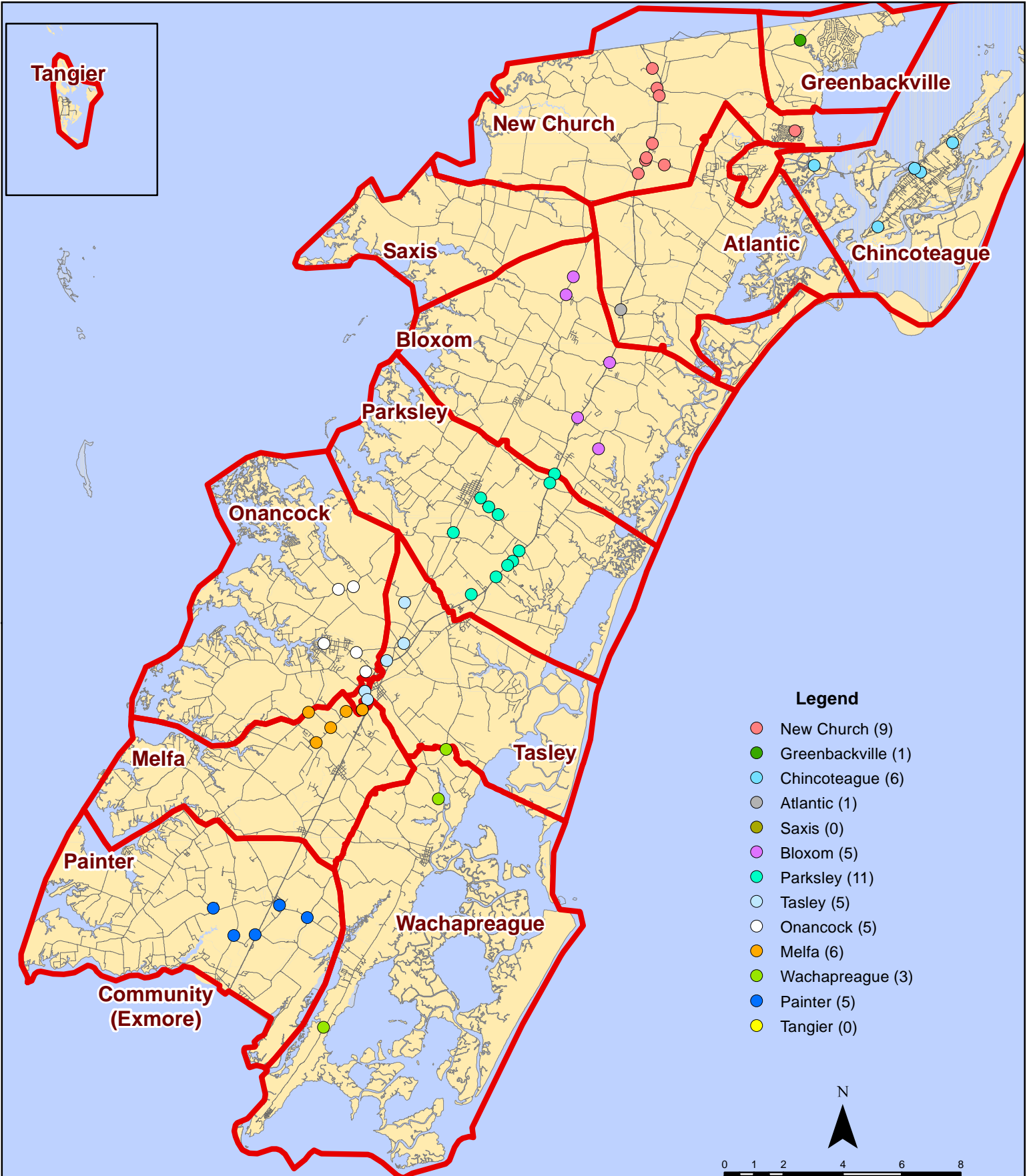
# February 2021 EMS Calls By Prime Unit



# February 2021 EMS Calls By Prime Unit



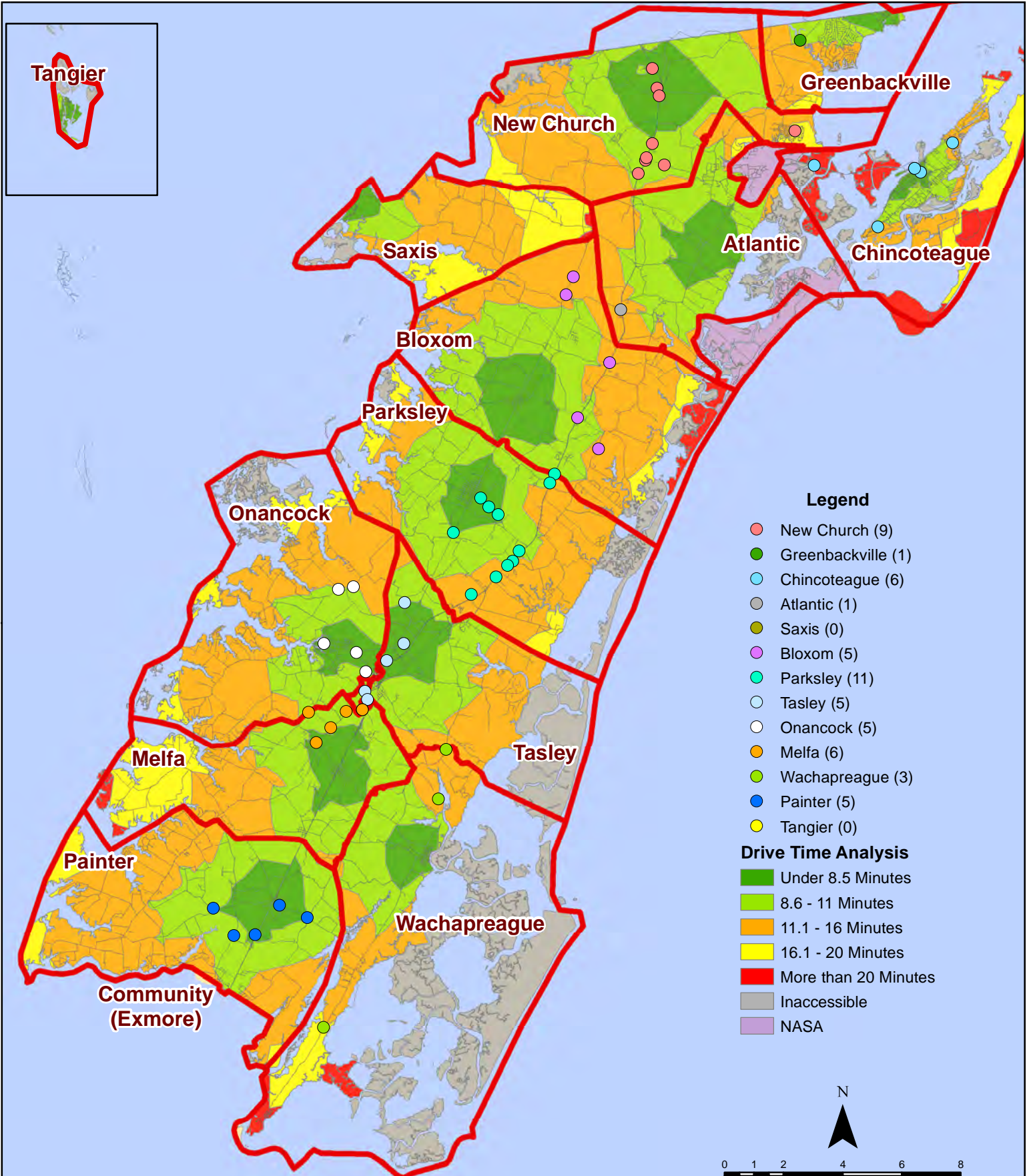
# February 2021 Fire Calls By District



All points are plotted using X and Y coordinates provided by the ESVA 911 Center. Points may be plotted over one another when they are in close proximity.

Map Prepared by the Accomack County Department of Building, Planning & Economic Development using data from the ESVA 911 Center - March 4, 2021

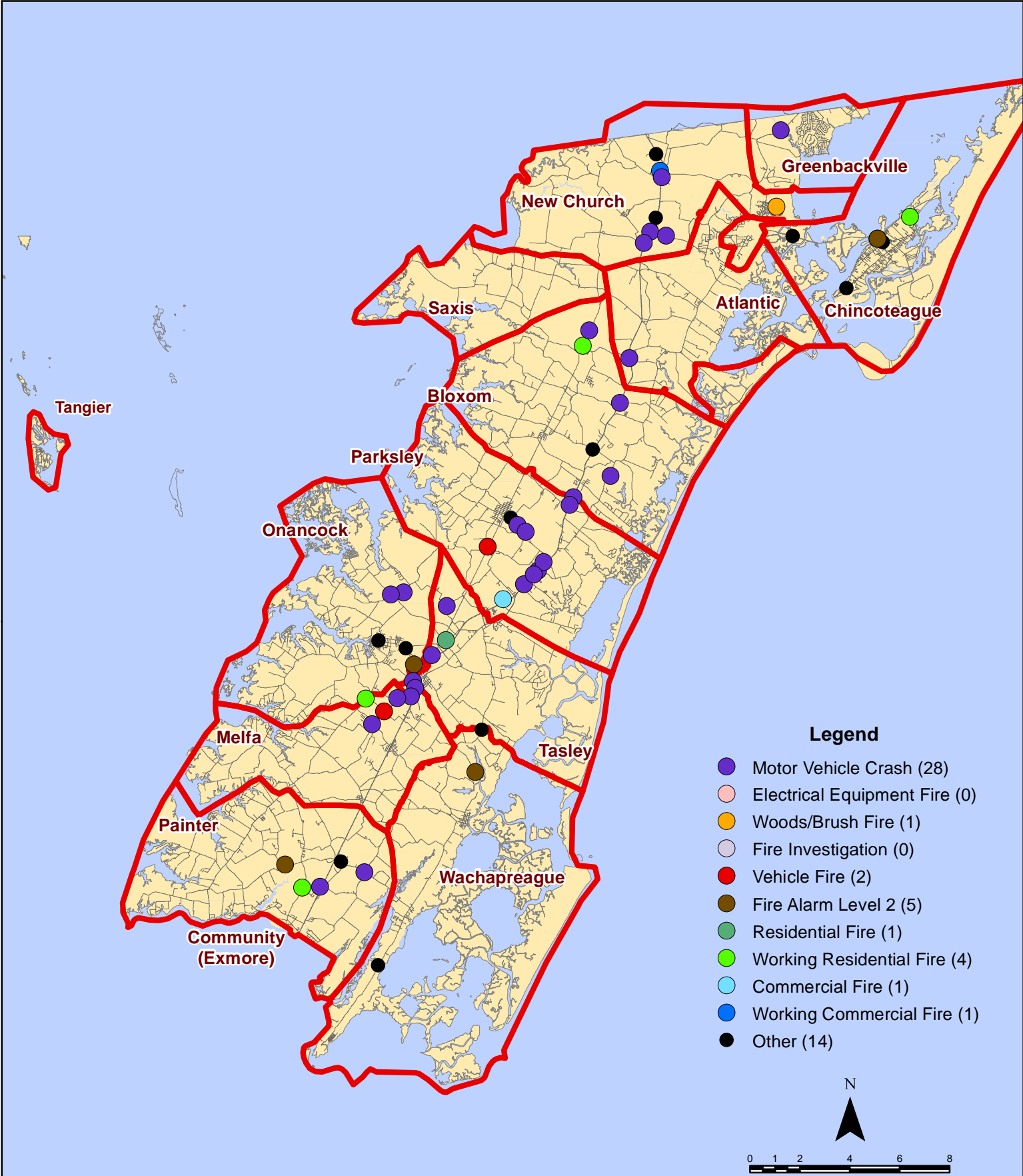
# February 2021 Fire Calls By District



All points are plotted using X and Y coordinates provided by the ESVA 911 Center. Points may be plotted over one another when they are in close proximity.

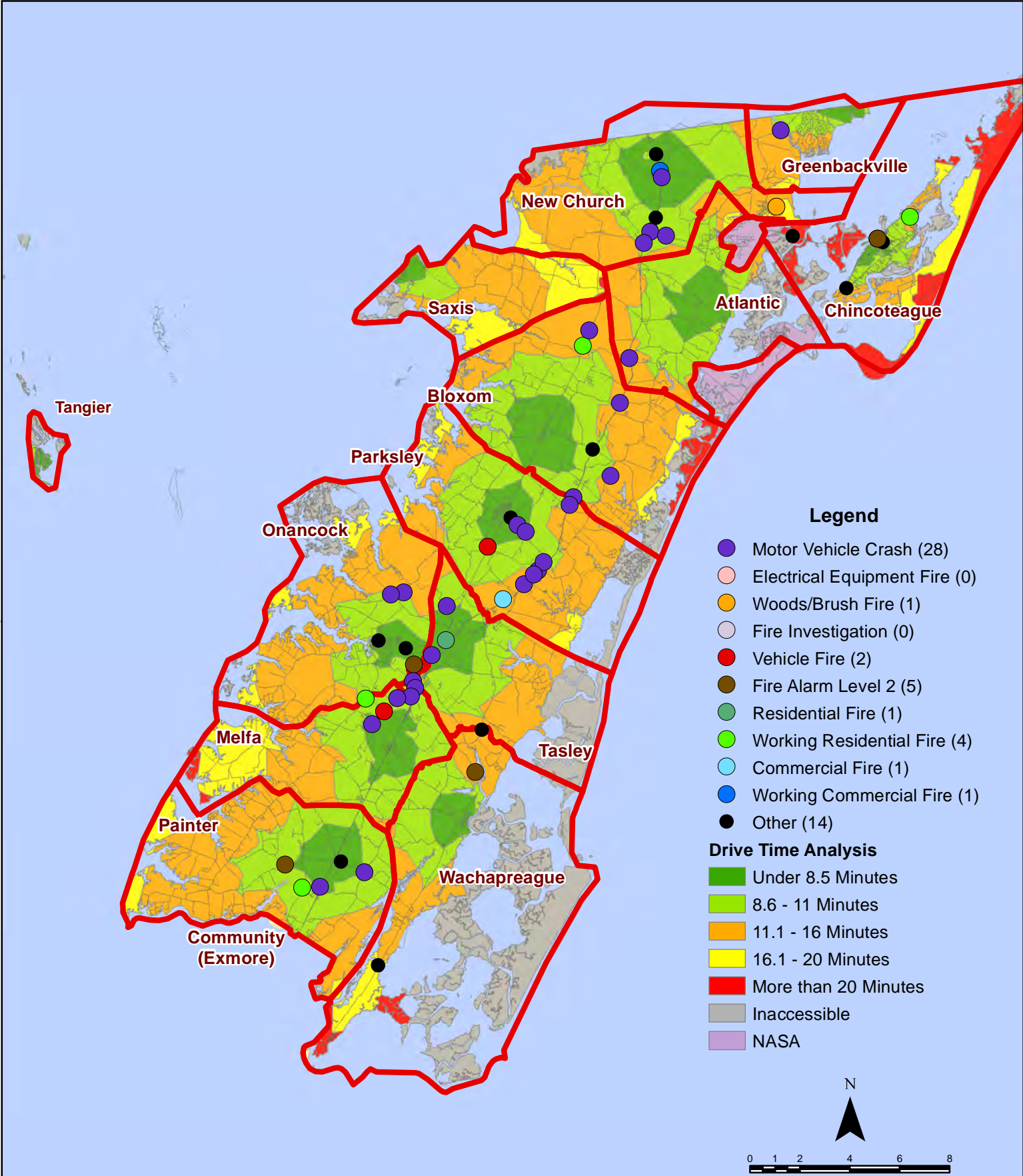
Map Prepared by the Accomack County Department of Building, Planning & Economic Development using data from the ESVA 911 Center - March 4, 2021

# February 2021 Fire Calls By Type



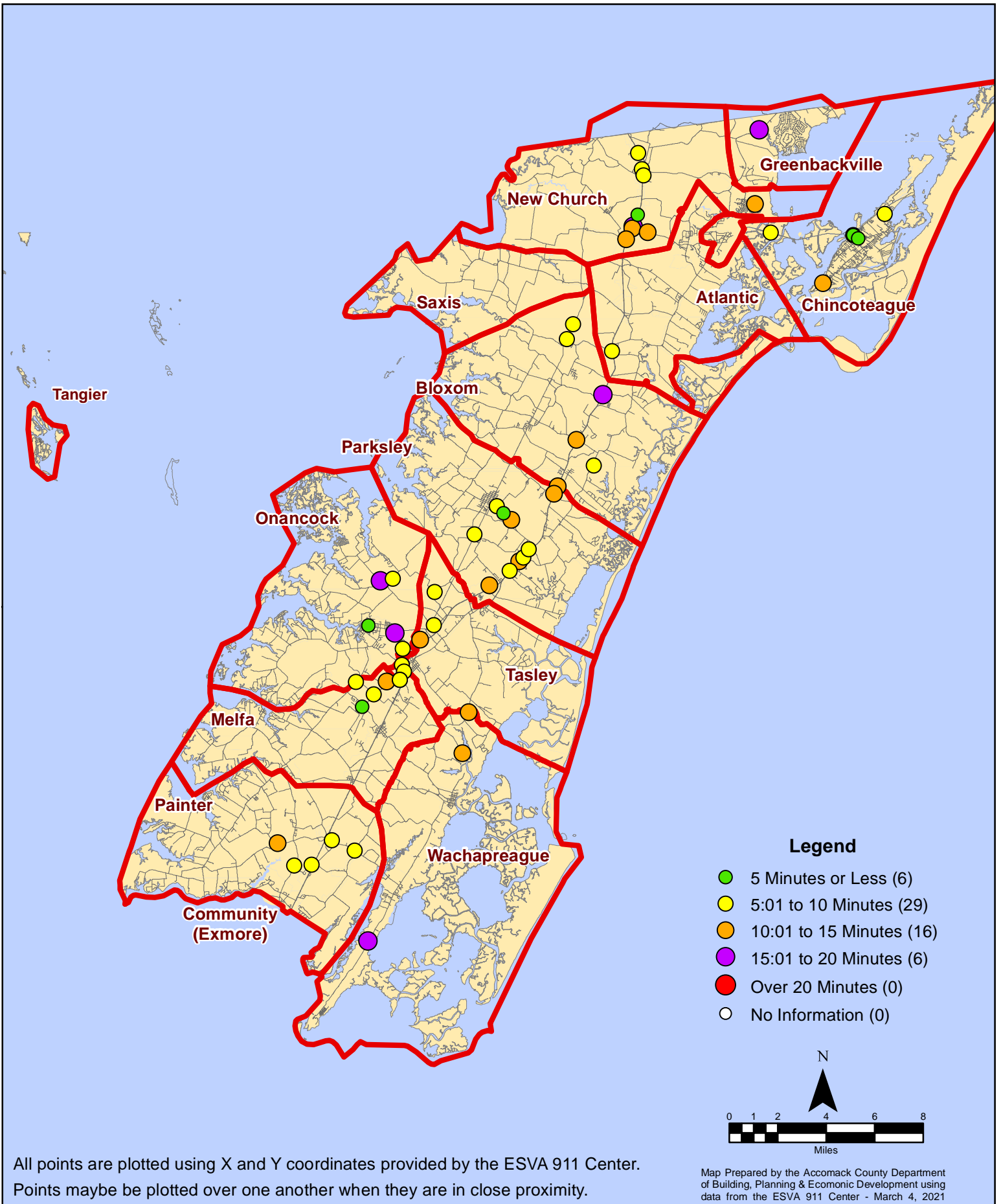
All points are plotted using X and Y coordinates provided by the ESVA 911 Center. Points may be plotted over one another when they are in close proximity.

# February 2021 Fire Calls By Type



All points are plotted using X and Y coordinates provided by the ESVA 911 Center. Points may be plotted over one another when they are in close proximity.

# February 2021 Fire Calls By Response Time

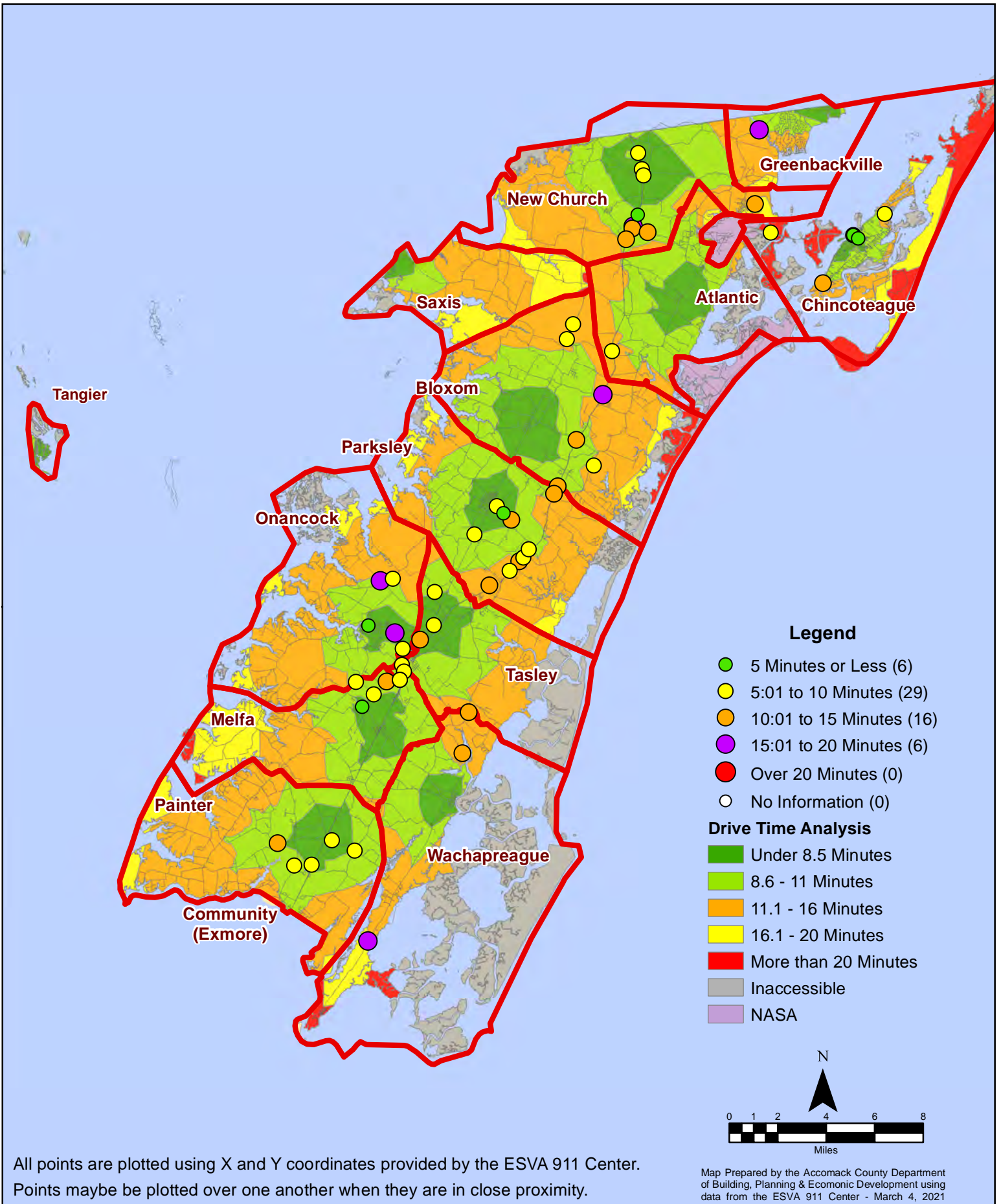


All points are plotted using X and Y coordinates provided by the ESVA 911 Center. Points may be plotted over one another when they are in close proximity.

Map Prepared by the Accomack County Department of Building, Planning & Economic Development using data from the ESVA 911 Center - March 4, 2021



# February 2021 Fire Calls By Response Time



All points are plotted using X and Y coordinates provided by the ESVA 911 Center. Points may be plotted over one another when they are in close proximity.

Map Prepared by the Accomack County Department of Building, Planning & Economic Development using data from the ESVA 911 Center - March 4, 2021