

**Fire - Performance Measure Data**

Station	Total Calls by District	Greater than 20 min. Response	%	Max. Response Time	NORS
New Church	12	0	100%	15:37	0
Greenbackville	2	0	100%	12:24	0
Chincoteague	N/A	N/A	N/A	N/A	0
Atlantic	34	0	100%	17:33	0
Saxis	5	0	100%	13:55	0
Bloxom	14	0	100%	17:06	0
Parksley	19	0	100%	15:40	0
Tasley	22	0	100%	16:28	0
Onancock	9	0	100%	14:29	0
Melfa	10	0	100%	9:44	0
Wachapreague	6	0	100%	11:26	0
Painter	9	0	100%	14:33	0
Onley	9	0	100%	14:34	0
Tangier	3	0	100%	8:27	0
Totals:	154	0	100%		0

Chincoteague Data Not Available

**EMS - Performance Measure Data**

Station	Total Calls by District	Career	Combination	Greater than 20 min. Response	%	Max. Response Time	NORS
Greenbackville	11	2	8	4	64%	38:18	2
Chincoteague	N/A	N/A	N/A	N/A	N/A	N/A	N/A
Saxis	19	5	4	4	79%	26:28	2
Bloxom	59	31	4	9	85%	32:03	11
Parksley	105	26	79	5	95%	24:57	0
Onancock	50	28	26	0	100%	17:09	0
Melfa	63	30	1	2	97%	25:55	2
Wachapreague	17	1	4	2	88%	26:46	6
Onley	62	26	44	2	97%	21:10	0
Oak Hall	76	19	53	11	86%	44:14	0
Tangier	12	n/a	n/a	0	100%	10:03	0
Community (Exmore)	17	n/a		1	94%	27:41	0
Totals	491	168	223	40	92%		23

Chincoteague Data Not Available

**EMS Mutual Aid Data**

**Station Receiving Aid**

Station : Giving Aid	Greenbackville	Chincoteague	Saxis	Bloxom	Parksley	Onancock	Melfa	Wachapreague	Onley	Oak Hall	Community (Exmore)	NORS	2nd Call	3rd Call
Greenbackville								4				2	0	0
Chincoteague								2				n/a	n/a	n/a
Saxis												2	0	0
Bloxom				4				6				11	5	1
Parksley			12						1			0	7	0
Onancock				1				3				0	3	0
Melfa					1		3	2	1			2	1	0
Wachapreague												6	0	0
Onley				1	1	2	2	1				0	4	1
Oak Hall	2	2	4	1								0	10	2
Community (Exmore)						1	2					0	3	0
Other									1					
Total	2	n/a	2	17	7	3	3	6	5	12	3	23	33	4

**October 2011**

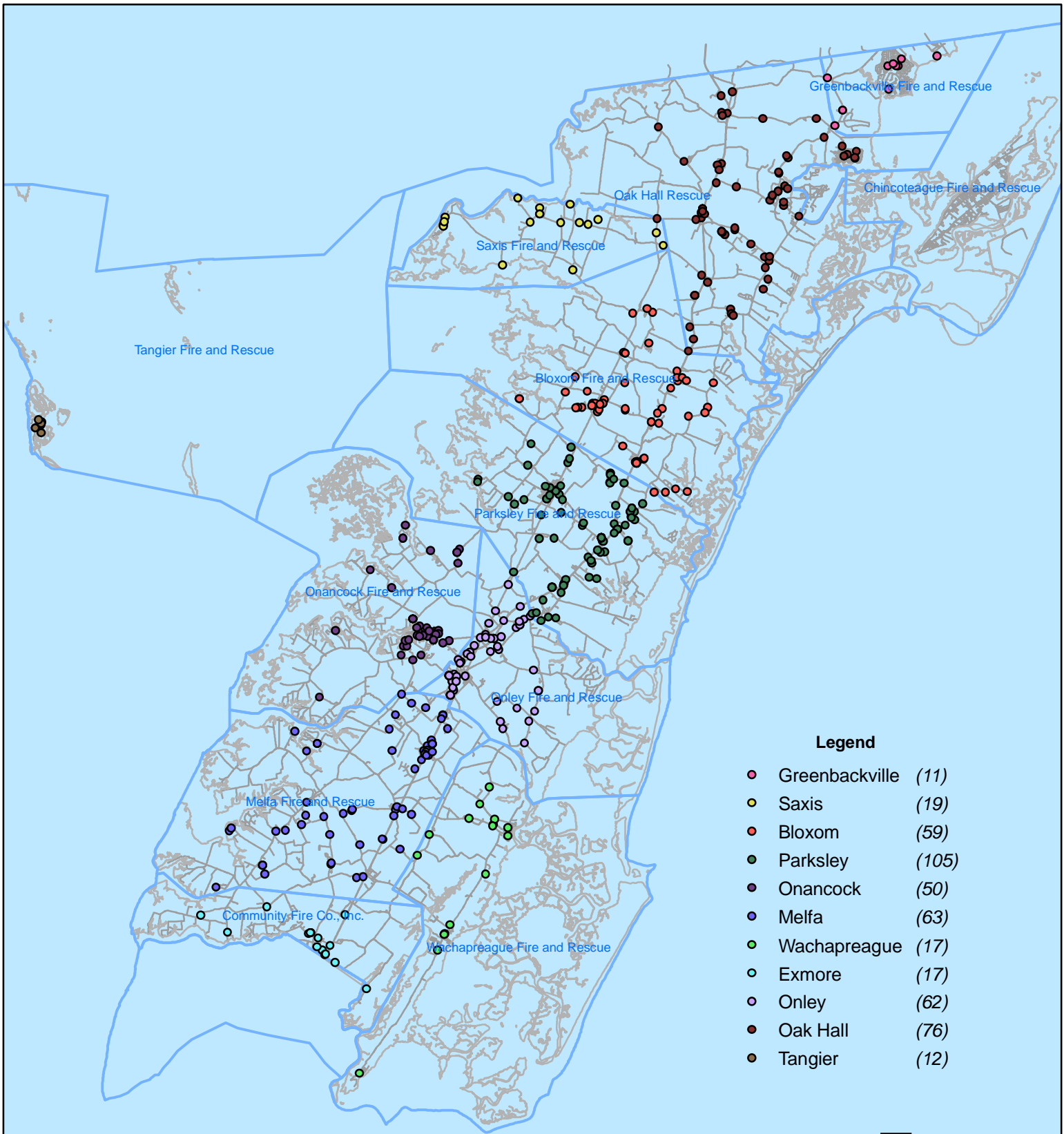
NORS = No Response. Call was handled by another station/agency.

2nd Call = 2nd Ambulance call received while First Ambulance was busy on another call.

3rd Call = 3rd ambulance call received while First and Second Ambulances were on other call.

This information was prepared using data supplied by the Eastern Shore of Virginia 911 Center  
 This information is original incident data only and may not be representative of all units or stations who responded to an incident.

# October 2011 EMS Calls By District



No Data Available For Chincoteague

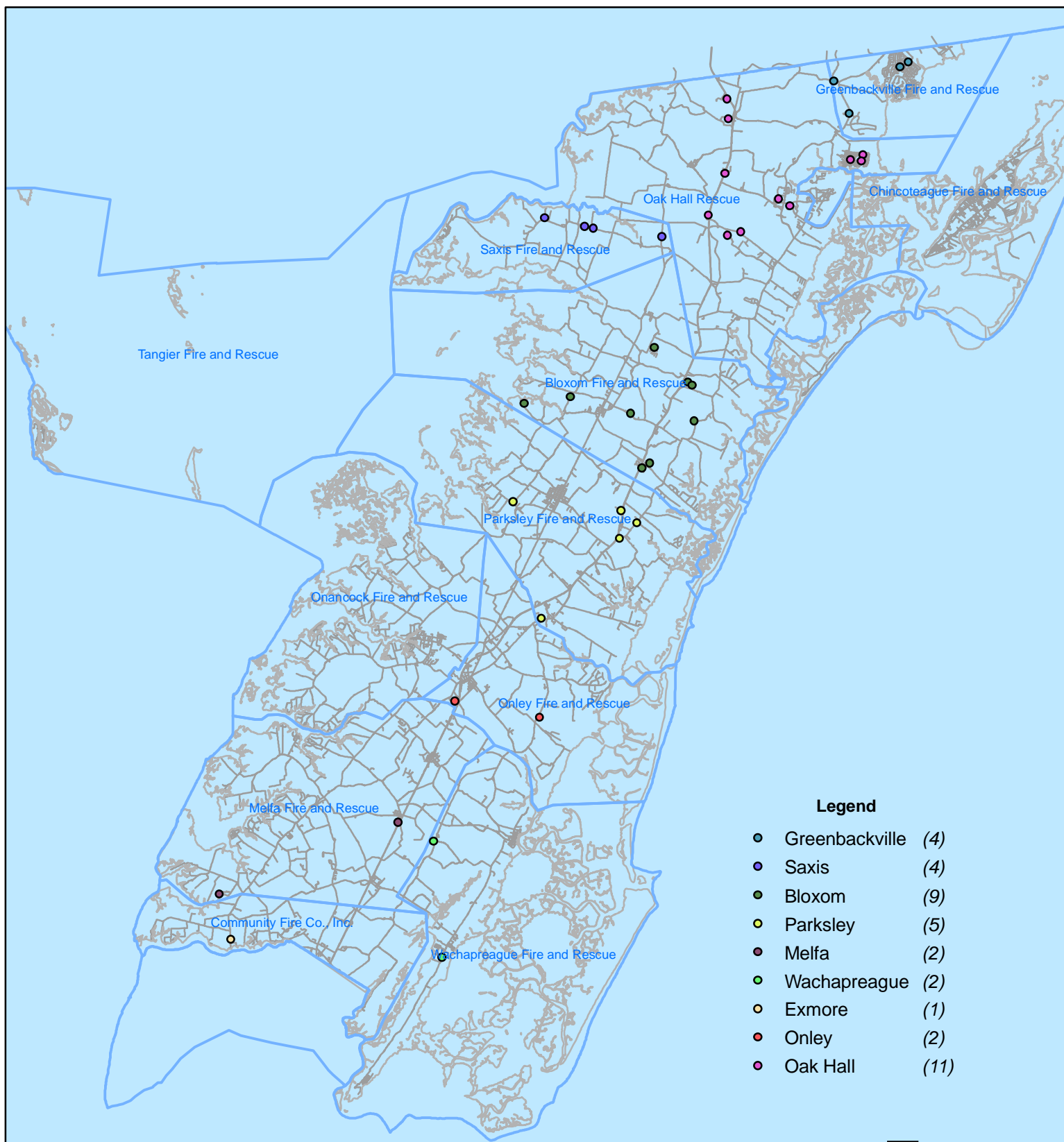
F



All points are plotted using X and Y coordinates provided by the ESVA 911 Center.  
Points may be plotted over one another when they are in close proximity.

Map Prepared using Data from the ESVA 911 Center

# October 2011 EMS Calls With Response Time Greater Than 20 Mins.



No Data Available For Chincoteague

### Legend

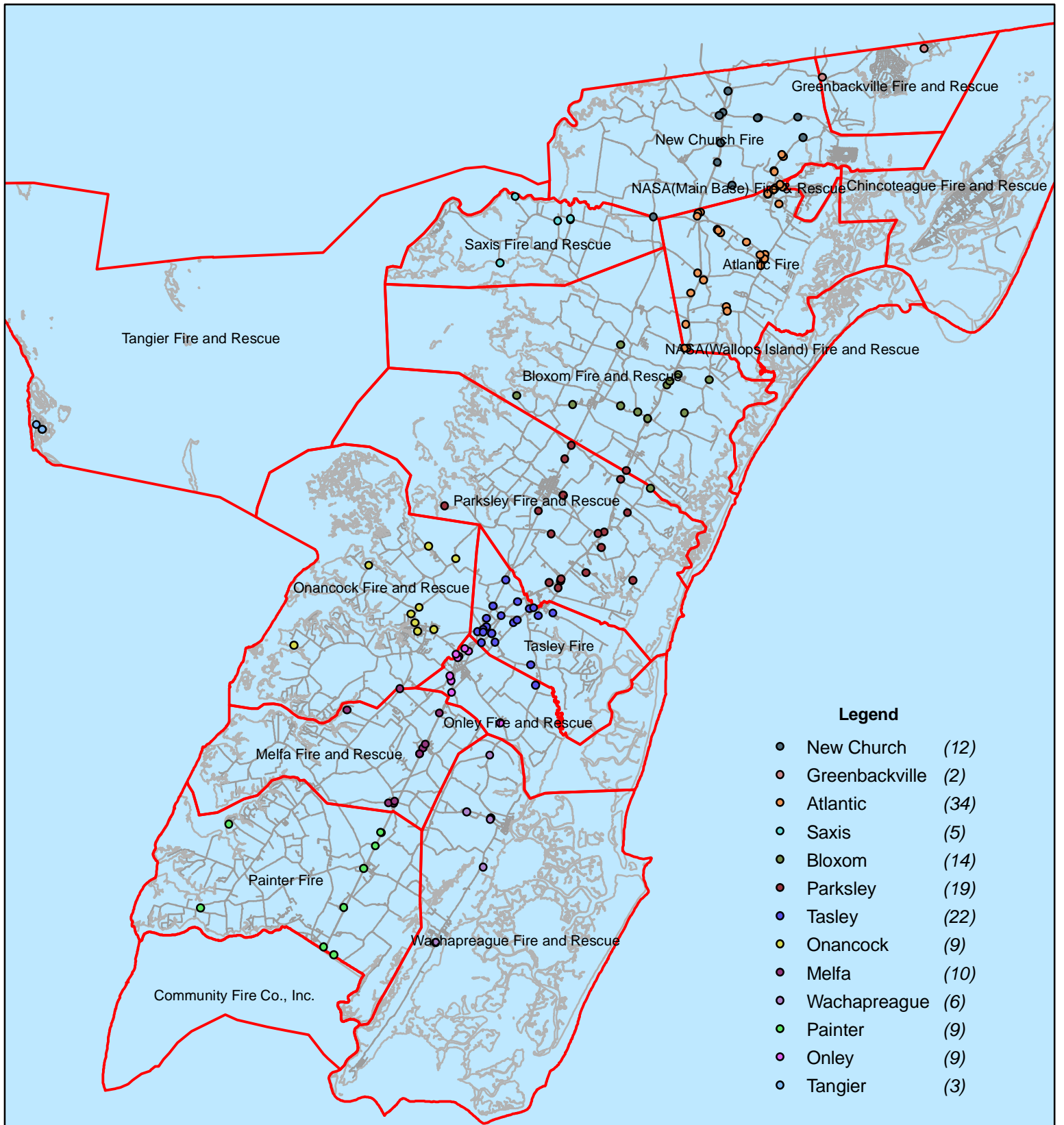
- Greenbackville (4)
- Saxis (4)
- Bloxom (9)
- Parksley (5)
- Melfa (2)
- Wachapreague (2)
- Exmore (1)
- Onley (2)
- Oak Hall (11)

# F



All points are plotted using X and Y coordinates provided by the ESVA 911 Center. Points may be plotted over one another when they are in close proximity.

# October 2011 Fire Calls By District



No Data Available For Chincoteague

All points are plotted using X and Y coordinates provided by the ESVA 911 Center. Points may be plotted over one another when they are in close proximity.

- Legend**
- New Church (12)
  - Greenbackville (2)
  - Atlantic (34)
  - Saxis (5)
  - Bloxom (14)
  - Parksley (19)
  - Tasley (22)
  - Onancock (9)
  - Melfa (10)
  - Wachapreague (6)
  - Painter (9)
  - Onley (9)
  - Tangier (3)

