

**Fire - Performance Measure Data**

Station	Total Calls	Greater than 20 min. Response	%	Max. Response Time	NORS
New Church	12	0	100%	12:34	0
Greenbackville	4	0	100%	16:23	0
Chincoteague	N/A	N/A	N/A	N/A	N/A
Atlantic	7	0	100%	10:48	0
Saxis	5	0	100%	19:04	0
Bloxom	17	0	100%	15:37	0
Parksley	20	0	100%	11:08	0
Tasley	5	0	100%	11:10	0
Onancock	10	0	100%	13:01	0
Melfa	5	0	100%	10:06	0
Wachapreague	3	0	100%	6:01	0
Painter	13	0	100%	14:36	0
Onley	7	0	100%	12:19	0
Tangier	1	0	n/a	9:39	0
Totals:	109	0			0

Chincoteague Data Not Available

**EMS - Performance Measure Data**

Station	Total Calls	Career	Combination	Greater than 20 min. Response	%	Max. Response Time	NORS
Greenbackville	11	0	3	3	73%	48:19	3
Chincoteague	N/A	N/A	N/A	N/A	N/A	N/A	N/A
Saxis	8	2	0	0	100%	11:16	3
Bloxom	72	31	5	6	92%	29:05	12
Parksley	84	24	60	2	98%	29:32	0
Onancock	52	20	26	0	100%	16:03	0
Melfa	66	35	2	5	92%	37:51	1
Wachapreague	12	1	1	1	92%	22:37	3
Onley	40	19	36	0	100%	17:08	0
Oak Hall	63	25	34	9	86%	39:21	0
Tangier	6	0	0	0	100%	10:13	0
Community (Exmore)	14	0	0	0	100%	51:54	2
Totals	428	157	167	26	94%		24

Chincoteague Data Not Available

**EMS Mutual Aid Data**

**Station Receiving Aid**

**June 2011**

Station : Giving Aid	Greenbackville	Chincoteague	Saxis	Bloxom	Parksley	Onancock	Melfa	Wachapreague	Onley	Oak Hall	Community (Exmore)	NORS	2nd Call	3rd Call
Greenbackville									2			3	0	0
Chincoteague	1								1			n/a	n/a	n/a
Saxis												3	0	0
Bloxom									3			12	5	1
Parksley			16									0	2	0
Onancock			1						1			0	2	0
Melfa							3	1				1	1	0
Wachapreague												3	0	0
Onley			1	2	2	2						0	2	0
Oak Hall	2	3										0	4	2
Community (Exmore)												2	3	0
Total	3	n/a	3	18	2	2	2	3	2	6	5	24	19	3

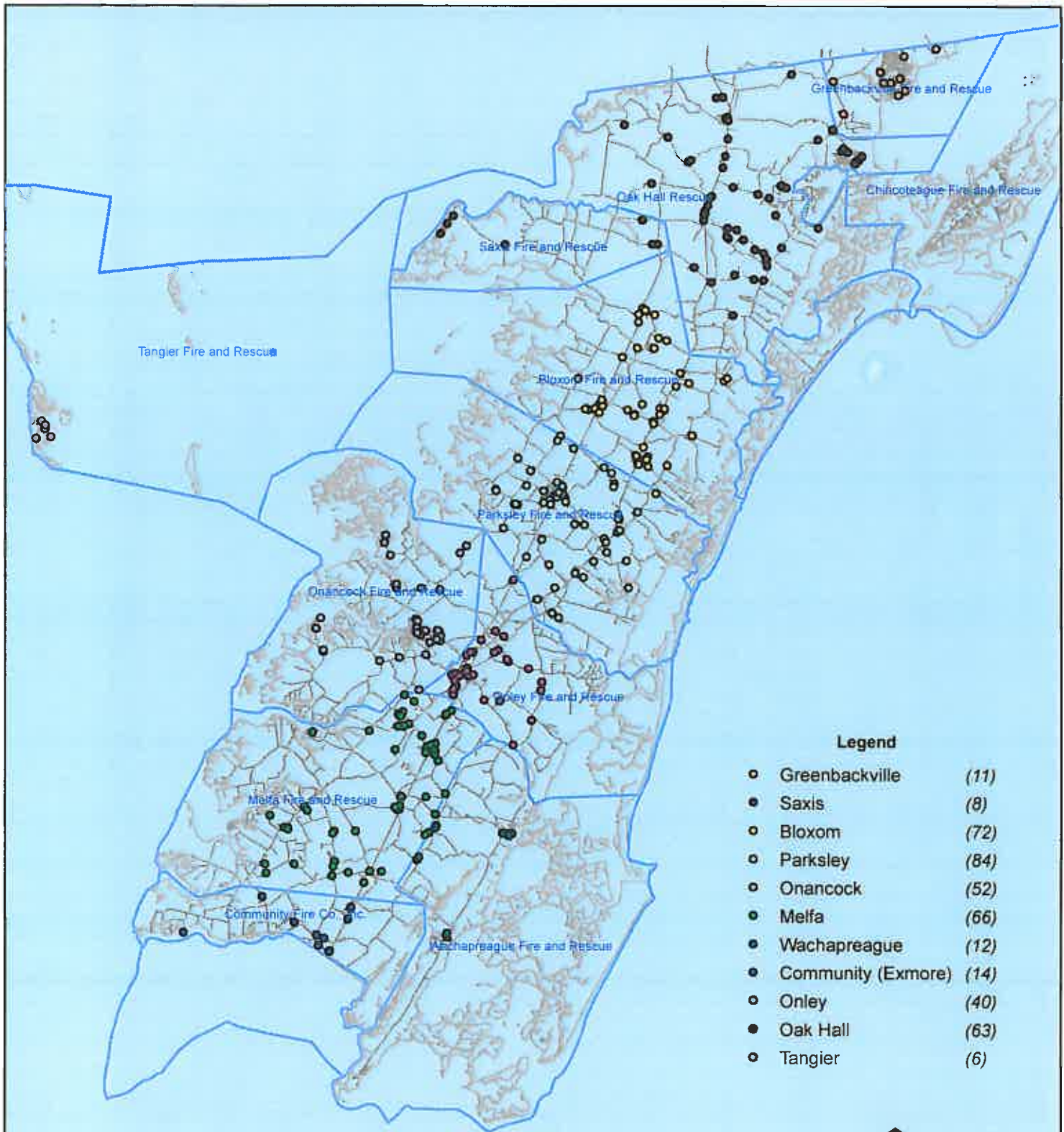
NORS = No Response. Call was handled by another station/agency.

2nd Call = 2nd Ambulance call received while First Ambulance was busy on another call.

3rd Call = 3rd ambulance call received while First and Second Ambulances were on other call.

This information was prepared using data supplied by the Eastern Shore of Virginia 911 Center  
 This information is original incident data only and may not be representative of all units or stations who responded to an incident.

# June 2011 EMS Calls By District



No Data Available For Chincoteague



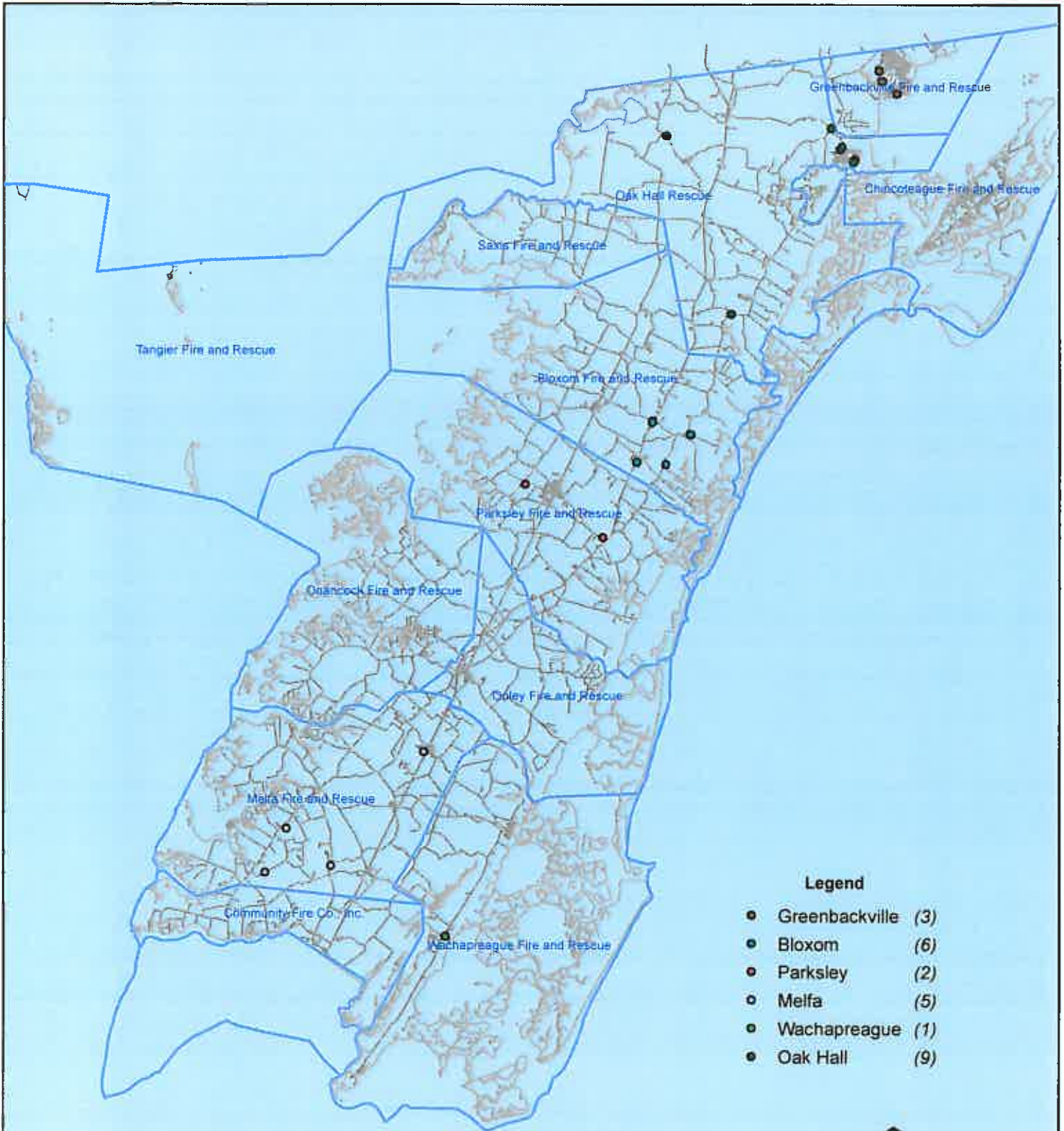
0 4.75 9.5 14.25 19 23.75 30

All points are plotted using X and Y coordinates provided by the ESVA 911 Center. Points maybe be plotted over one another when they are in close proximity.

Map Prepared using Data from the ESVA 911 Center



# June 2011 EMS Calls With Response Time Greater Than 20 Mins.



No Data Available For Chincoteague

### Legend

- Greenbackville (3)
- Bloxom (6)
- Parksley (2)
- Meffa (5)
- Wachapreague (1)
- Oak Hall (9)

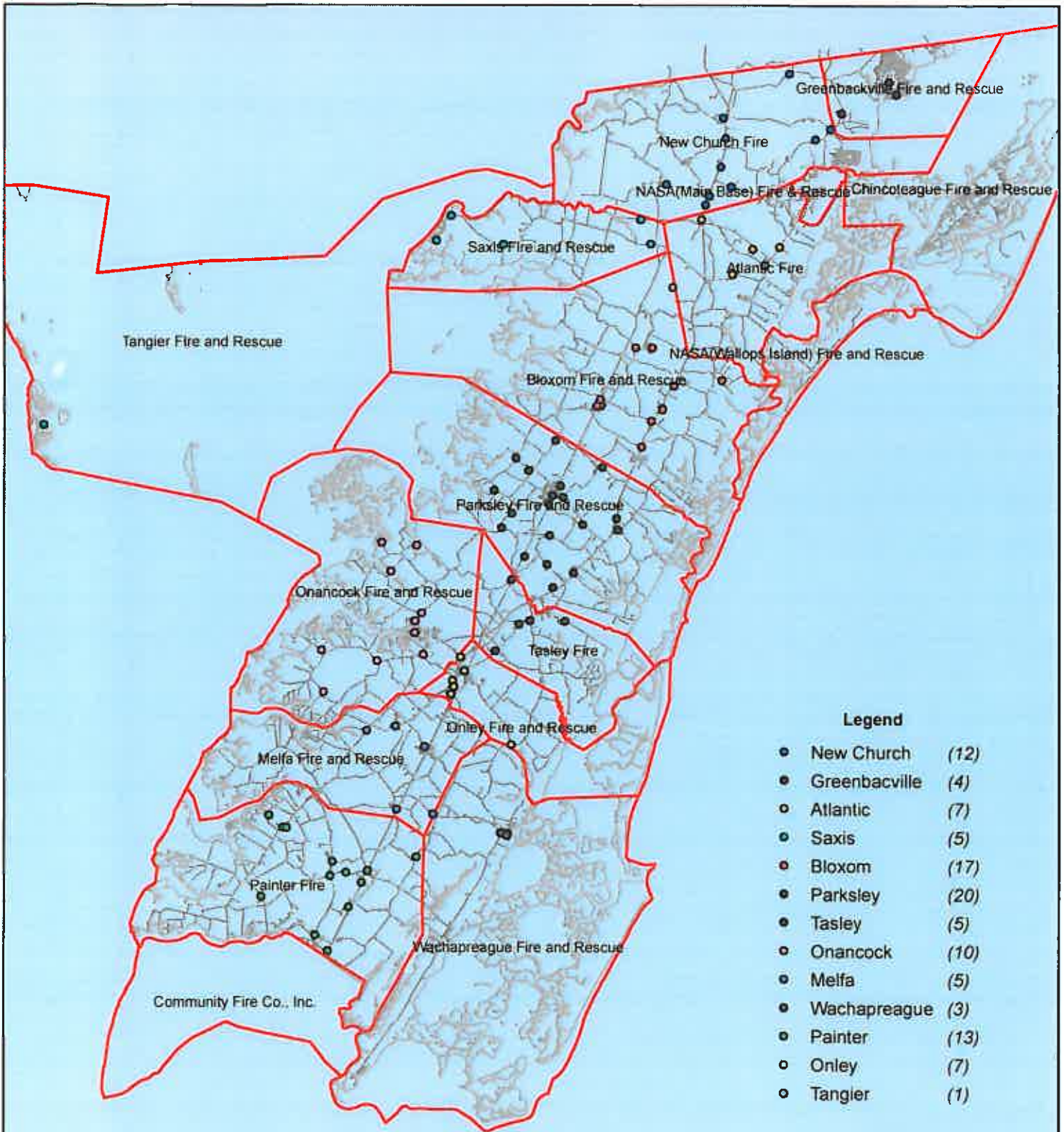


All points are plotted using X and Y coordinates provided by the ESVA 911 Center. Points maybe be plotted over one another when they are in close proximity.

Map Prepared using Data from the ESVA 911 Center



# June 2011 Fire Calls By District



No Data Available For Chincoteague



0 1000 2000 3000 4000 Feet

Map Prepared using Data from the ESVA 911 Center

All points are plotted using X and Y coordinates provided by the ESVA 911 Center. Points maybe be plotted over one another when they are in close proximity.