

Fire - Performance Measure Data

District	Total Calls	Greater than 20 min. Response	%	Max. Response Time	NORS
New Church	15	0	100%	15:39	0
Greenbackville	3	0	100%	17:44	0
Chincoteague	N/A	N/A	N/A	N/A	N/A
Atlantic	29	0	100%	12:51	0
Saxis	2	1	50%	37:56	0
Bloxom	10	1	90%	23:49	0
Parksley	16	0	100%	11:59	0
Tasley	14	0	100%	19:50	0
Onancock	4	0	100%	9:44	0
Melfa	9	0	100%	13:42	0
Wachapreague	2	1	50%	21:40	0
Painter	4	1	75%	24:14	0
Onley	14	0	100%	17:39	0
Tangier	4	0	100%	19:15	0
Totals:	126	4			0

Chincoteague Data Not Available

EMS - Performance Measure Data

District	Total Calls	Career	Combination	Greater than 20 min. Response	%	Max. Response Time	NORS
Greenbackville	21	1	4	9	57%	47:50	4
Chincoteague	N/A	N/A	N/A	N/A	N/A	N/A	N/A
Saxis	9	1	1	2	78%	20:34	0
Bloxom	63	24	8	5	92%	25:42	11
Parksley	121	34	86	2	98%	30:33	0
Onancock	49	19	30	0	100%	15:49	0
Melfa	75	30	1	4	95%	30:12	2
Wachapreague	19	1	2	1	95%	48:28	8
Onley	37	14	23	0	100%	16:37	1
Oak Hall	80	37	43	6	93%	36:51	0
Tangier	12	n/a	n/a	0	100%	9:49	0
Community (Exmore)	11	n/a	n/a	0	100%	16:52	0
Totals	497	161	198	29	94%		26

Chincoteague Data Not Available

EMS Mutual Aid Data

Station Receiving Aid

Station : Giving Aid	Greenbackville	Chincoteague	Saxis	Bloxom	Parksley	Onancock	Melfa	Wachapreague	Onley	Oak Hall	Community (Exmore)	NORS	2nd Call	3rd Call
Greenbackville									2			4	0	0
Chincoteague									2			n/a	n/a	n/a
Saxis												0	0	0
Bloxom				2					3			11	3	0
Parksley			11	2								0	2	0
Onancock					4	2						0	3	0
Melfa							8	1				2	6	0
Wachapreague												8	0	0
Onley					1	2						1	2	0
Oak Hall	4		3									0	7	0
Community (Exmore)						2						0	0	0
Total	4	n/a	0	14	2	3	8	8	3	7	0	26	23	0

July 2011

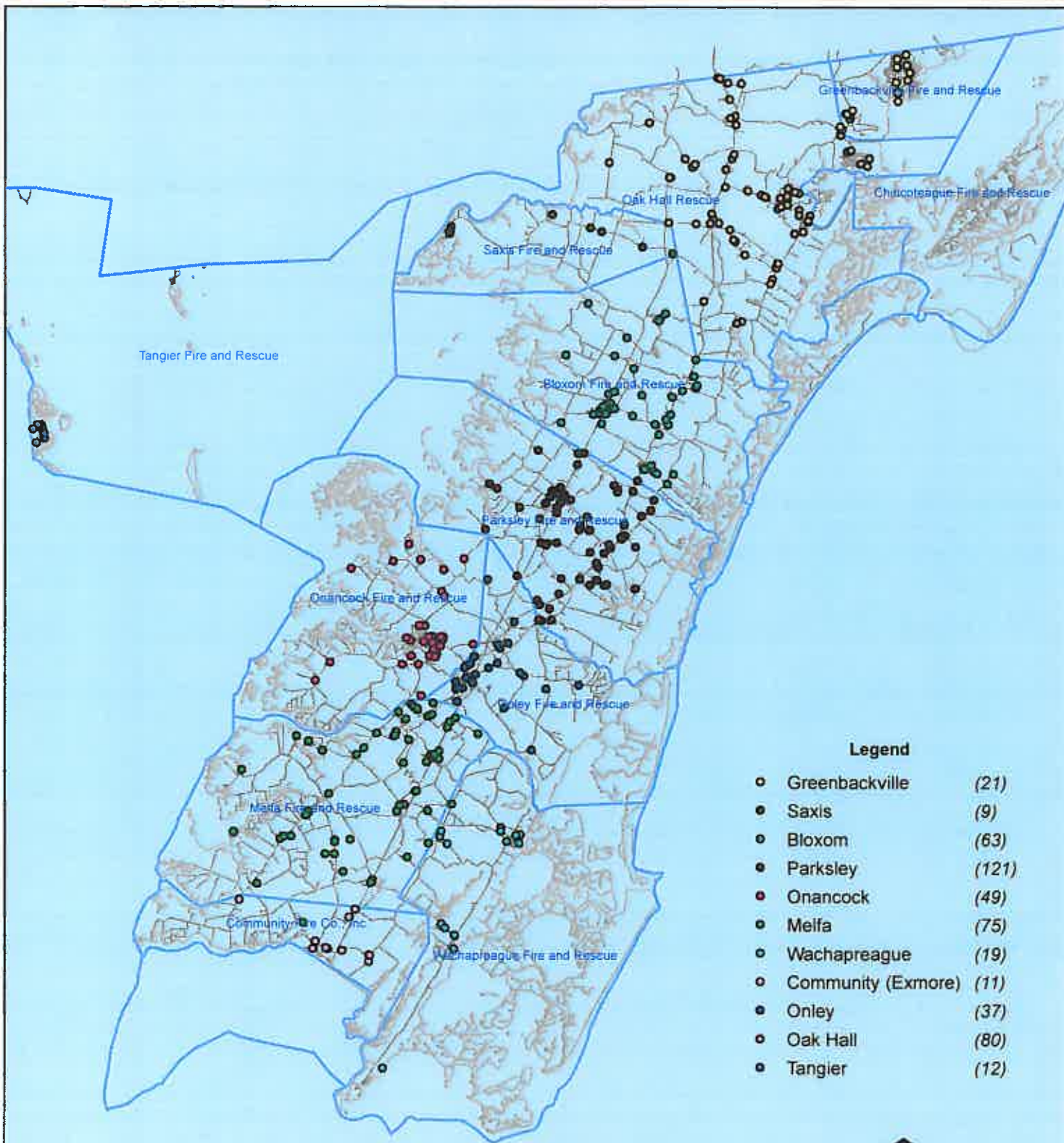
NORS = No Response. Call was handled by another station/agency.

2nd Call = 2nd Ambulance call received while First Ambulance was busy on another call.

3rd Call = 3rd ambulance call received while First and Second Ambulances were on other call.

This information was prepared using data supplied by the Eastern Shore of Virginia 911 Center
 This information is original incident data only and may not be representative of all units or stations who responded to an incident.

July 2011 EMS Calls By District



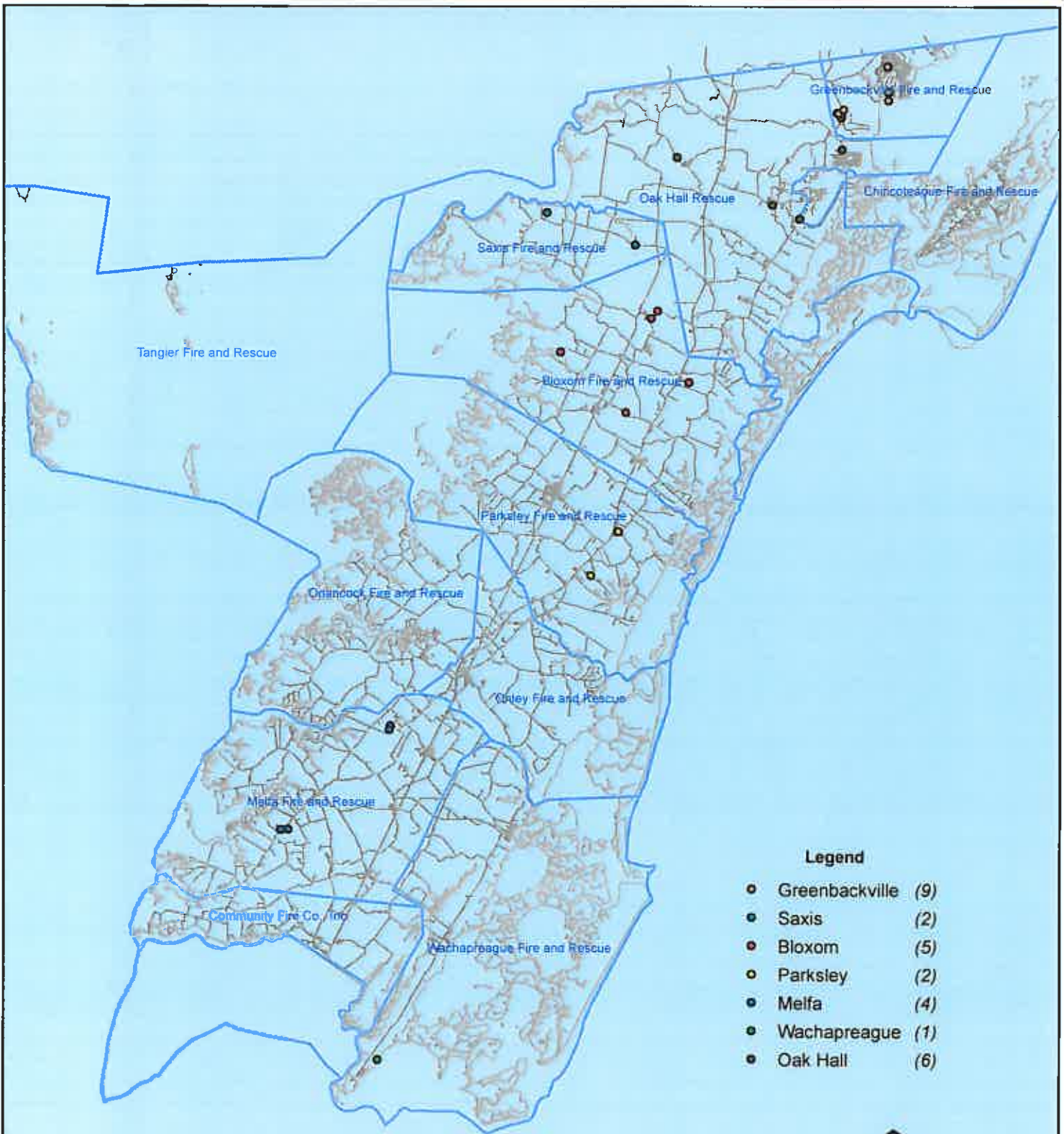
No Data Available For Chincoteague



All points are plotted using X and Y coordinates provided by the ESVA 911 Center. Points may be plotted over one another when they are in close proximity.

Map Prepared using Data from the ESVA 911 Center

July 2011 EMS Calls With Response Time Greater Than 20 Mins.



No Data Available For Chincoteague

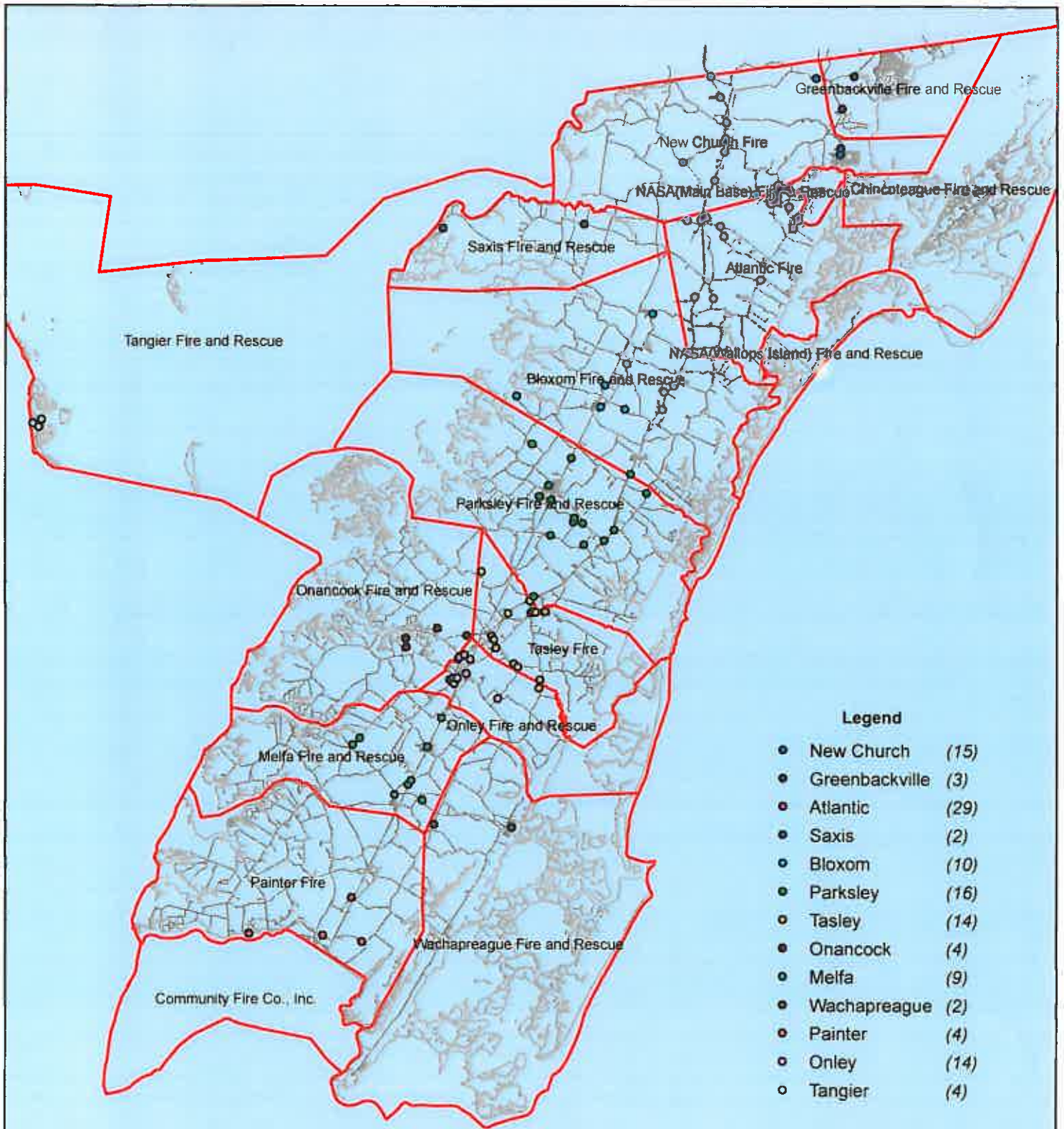
- Legend**
- Greenbackville (9)
 - Saxis (2)
 - Bloxom (5)
 - Parksley (2)
 - Melfa (4)
 - Wachapreague (1)
 - Oak Hall (6)



All points are plotted using X and Y coordinates provided by the ESVA 911 Center. Points maybe be plotted over one another when they are in close proximity.

Map Prepared using Data from the ESVA 911 Center

July 2011 Fire Calls By District



No Data Available For Chincoteage

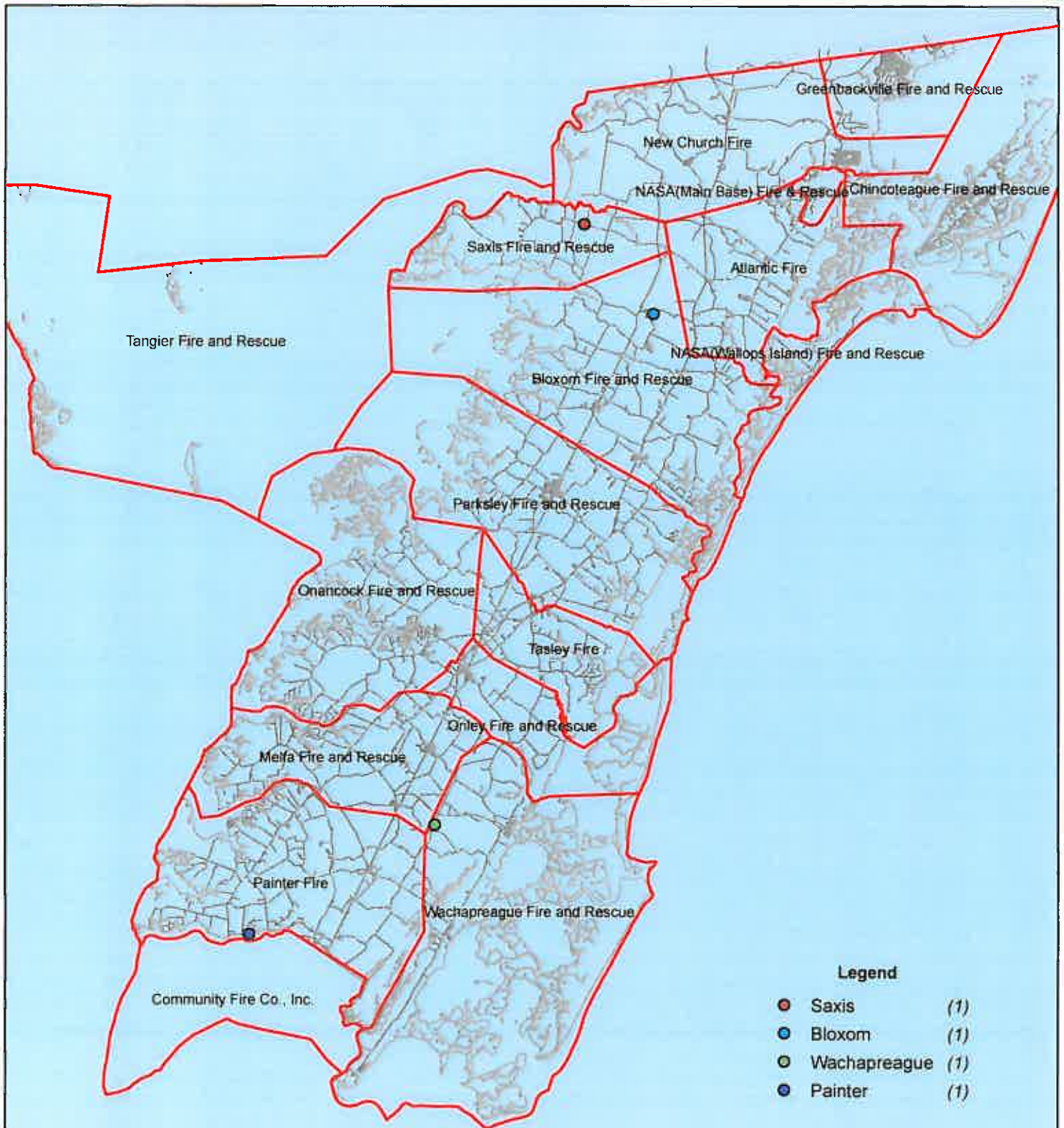


All points are plotted using X and Y coordinates provided by the ESVA 911 Center. Points may be plotted over one another when they are in close proximity.

0 5,000 10,000 20,000 30,000 40,000 Feet

Map Prepared using Data from the ESVA 911 Center

July 2011 Fire Calls With Response Time Greater Than 20 Mins.



No Data Available For Chincoteague



All points are plotted using X and Y coordinates provided by the ESVA 911 Center. Points may be plotted over one another when they are in close proximity.



Map Prepared using Data from the ESVA 911 Center