

**Fire - Performance Measure Data**

Station	Total Calls	Greater than 20 min. Response	%	Max. Response Time	NORS
New Church	9	1	89%	21:17	0
Greenbackville	4	0	100%	14:16	0
Chincoteague	N/A	N/A	N/A	N/A	N/A
Atlantic	12	0	100%	13:46	0
Saxis	3	1	67%	40:45	0
Bloxom	8	0	100%	14:15	0
Parksley	18	0	100%	13:39	0
Tasley	3	0	100%	09:36	0
Onancock	9	0	100%	12:36	0
Melfa	8	0	100%	18:48	0
Wachapreague	0	0	N/A	N/A	N/A
Painter	5	0	100%	10:26	0
Onley	4	0	100%	6:26	0
Tangier	1	0	N/A	0:42	0
Totals:	84	2			0

Chincoteague Data Not Available

**EMS - Performance Measure Data**

Station	Total Calls	Career Combination	Greater than 20 min. Response	%	Max. Response Time	NORS
Greenbackville	12		5	58%	47:21	5
Chincoteague	N/A		N/A	N/A	N/A	N/A
Saxis	13		3	77%	22:13	2
Bloxom	67		3	96%	24:51	11
Parksley	114		3	97%	38:11	0
Onancock	51		1	98%	29:30	0
Melfa	65		6	91%	29:01	0
Wachapreague	20		1	95%	21:12	4
Onley	31		1	97%	20:06	0
Oak Hall	74		2	97%	26:59	0
Tangier	11		0	100%	18:23	0
Community (Exmore)	14		2	86%	22:35	0
Totals	472		27	94%		22

Chincoteague Data Not Available

**EMS Mutual Aid Data**

Station Receiving Aid

Station : Giving Aid	Greenbackville	Chincoteague	Saxis	Bloxom	Parksley	Onancock	Melfa	Wachapreague	Onley	Oak Hall	Community (Exmore)	NORS	2nd Call	3rd Call
Greenbackville												5	0	0
Chincoteague	1							1				n/a	n/a	n/a
Saxis												2	0	0
Bloxom		1				1		2				11	4	0
Parksley			15									0	2	0
Onancock				2		1		1				0	1	0
Melfa							4					0	4	0
Wachapreague										1		4	0	0
Onley					1	1						0	1	0
Oak Hall	4	1										0	2	1
Community (Exmore)						1						0	2	1
Total	5	n/a	2	15	2	1	4	4	1	3	2	22	16	2

**February 2011**

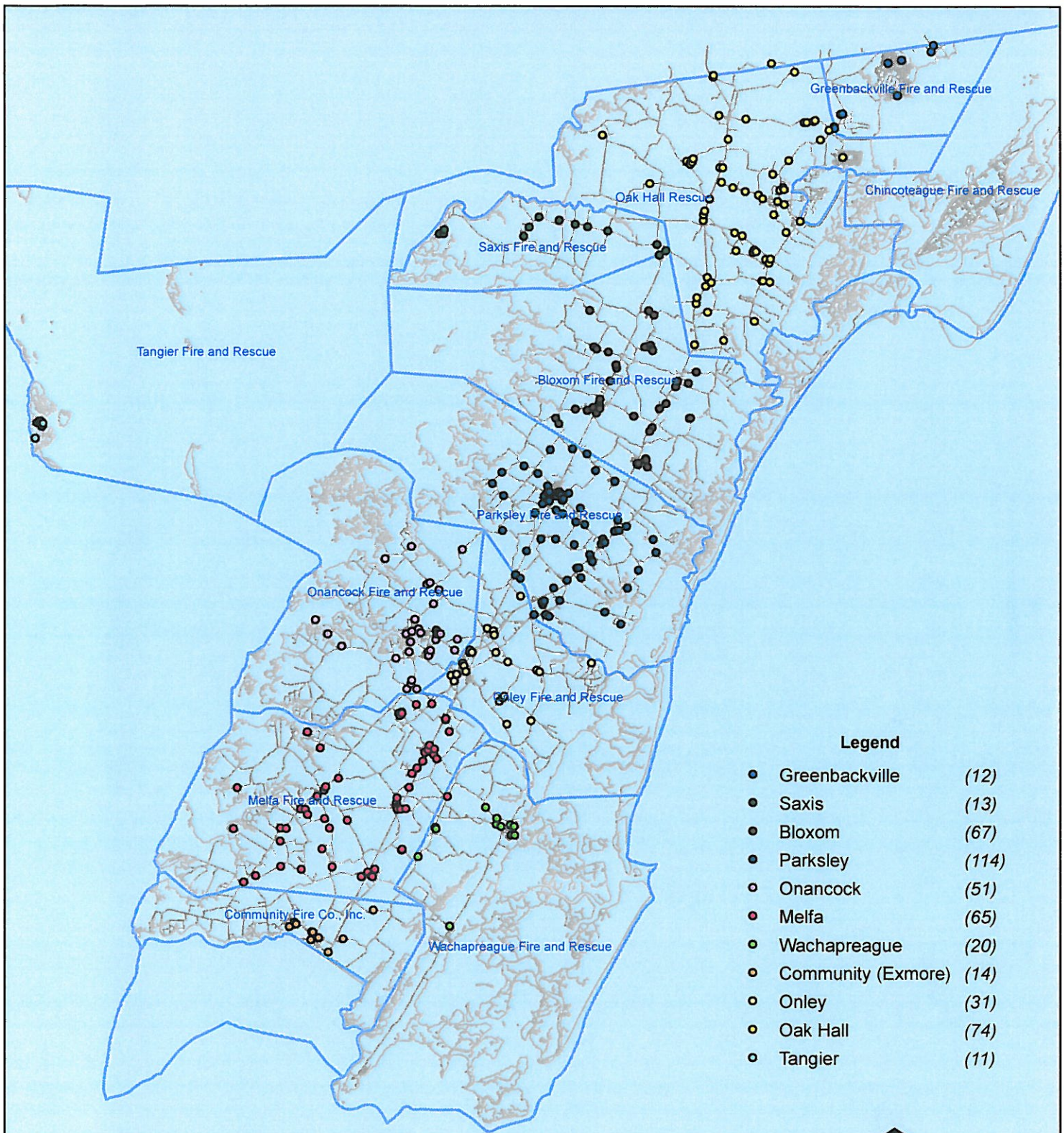
NORS = No Response. Call was handled by another station/agency.

2nd Call = 2nd Ambulance call received while First Ambulance was busy on another call.

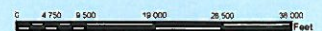
3rd Call = 3rd ambulance call received while First and Second Ambulances were on other call.

This information was prepared using data supplied by the Eastern Shore of Virginia 911 Center  
 This information is original incident data only and may not be representative of all units or stations who responded to an incident.

# February 2011 EMS Calls By District



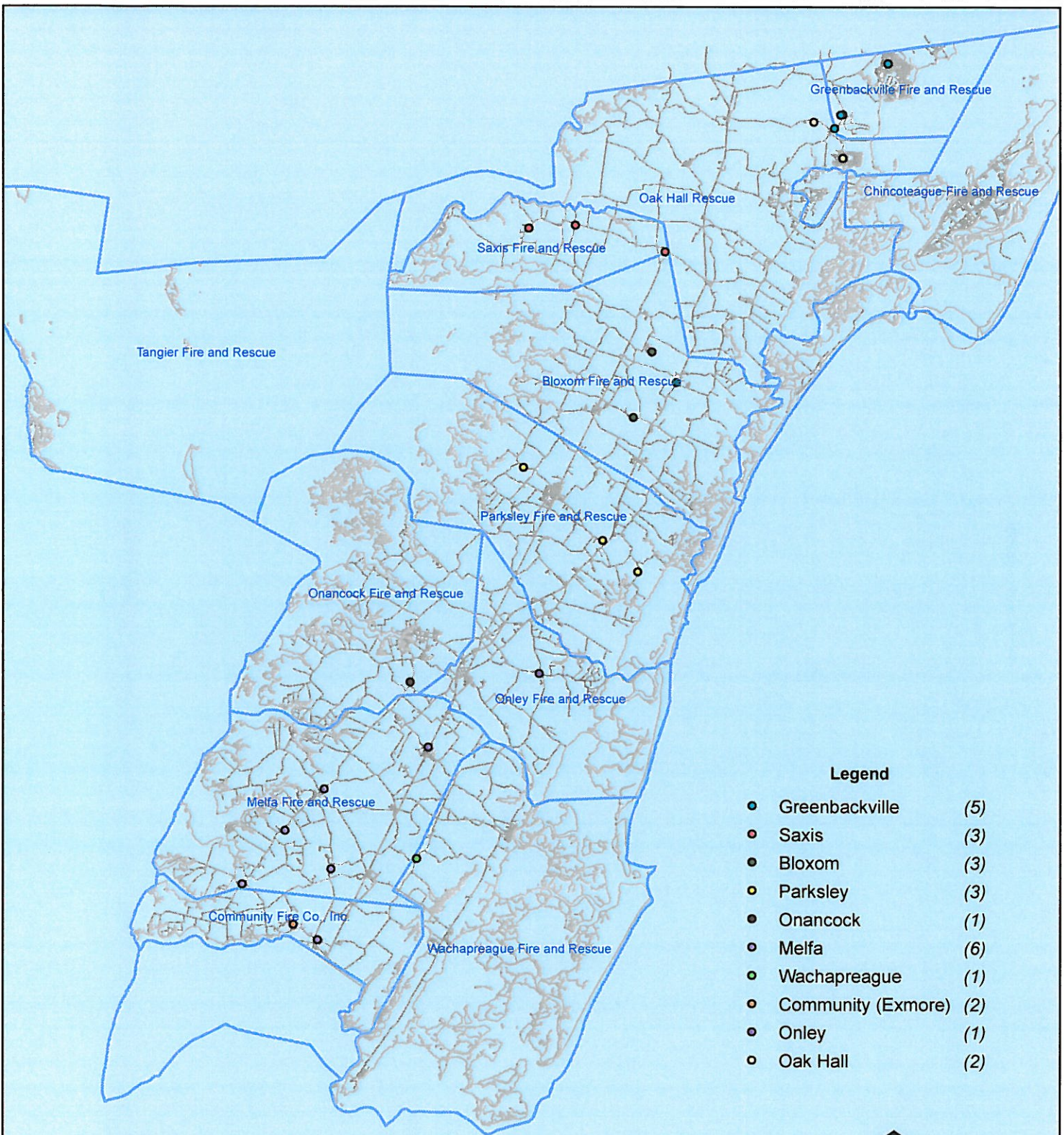
No Data Available For Chincoteague



All points are plotted using X and Y coordinates provided by the ESVA 911 Center. Points may be plotted over one another when they are in close proximity.

Map Prepared using Data from the ESVA 911 Center

# February 2011 EMS Calls With Response Time Greater Than 20 Mins.



No Data Available For Chincoteague

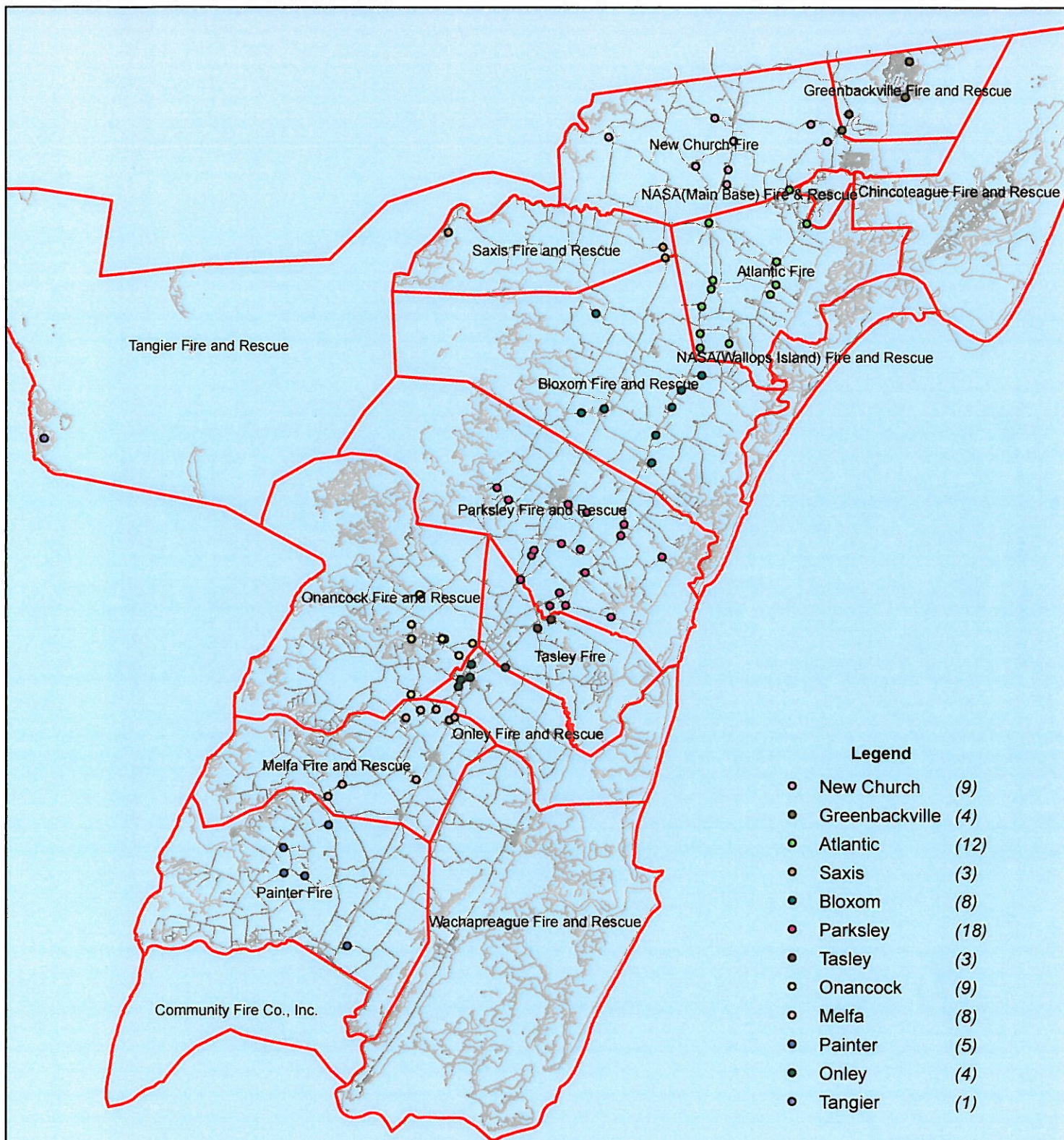


0 4,850 9,700 19,400 29,100 38,800 Feet

All points are plotted using X and Y coordinates provided by the ESVA 911 Center. Points may be plotted over one another when they are in close proximity.

Map Prepared using Data from the ESVA 911 Center

# February 2011 Fire Calls By District



No Data Available For Chincoteague



All points are plotted using X and Y coordinates provided by the ESVA 911 Center. Points may be plotted over one another when they are in close proximity.

0 5,000 10,000 20,000 30,000 40,000 Feet

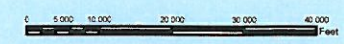
Map Prepared using Data from the ESVA 911 Center

# February 2011 Fire Calls With Response Time Greater Than 20 Mins.



No Data Available For Chincoteague

- Legend**
- New Church (1)
  - Saxis (1)



All points are plotted using X and Y coordinates provided by the ESVA 911 Center. Points may be plotted over one another when they are in close proximity.

Map Prepared using Data from the ESVA 911 Center