

Fire - Performance Measure Data					
District	Total Calls	Greater than 20 min. Response	%	Max. Response Time	NORS
New Church	9	0	100%	19:59	0
Greenbackville	8	0	100%	18:47	0
Chincoteague	N/A	N/A	N/A	N/A	N/A
Atlantic	34	0	100%	11:14	0
Saxis	8	2	75%	30:40	0
Bloxom	19	4	79%	35:52	0
Parksley	35	0	100%	14:20	0
Tasley	26	1	96%	22:33	0
Onancock	12	0	100%	13:09	0
Melfa	15	0	100%	13:53	0
Wachapreague	2	1	50%	26:19	0
Painter	21	0	100%	16:15	0
Onley	13	0	100%	10:43	0
Tangier	0	0	n/a	n/a	0
Totals:	202	8			0

Chincoteague Data Not Available

EMS - Performance Measure Data							
District	Total Calls	Career	Combination	Greater than 20 min. Response	%	Max. Response Time	NORS
Greenbackville	18	2	9	2	89%	28:08	2
Chincoteague	N/A	N/A	N/A	N/A	N/A	N/A	N/A
Saxis	15	0	4	0	100%	14:50	2
Bloxom	67	44	4	4	94%	46:07	6
Parksley	108	43	60	3	97%	27:55	0
Onancock	57	22	33	2	96%	22:48	0
Melfa	69	29	4	5	93%	28:44	2
Wachapreague	16	6	1	0	100%	19:05	4
Onley	52	18	34	1	98%	22:55	0
Oak Hall	93	35	55	10	89%	34:53	0
Tangier	7	0	0	0	100%	8:09	0
Community (Exmore)	11	n/a	n/a	1	91%	29:02	3
Totals	513	199	204	28	95%		19

Chincoteague Data Not Available

**EMS Mutual Aid Data**

**Station Receiving Aid**

**August 2011**

Station : Giving Aid	Greenbackville	Chincoteague	Saxis	Bloxom	Parksley	Onancock	Melfa	Wachapreague	Onley	Oak Hall	Community (Exmore)	NORS	2nd Call	3rd Call
Greenbackville									1			2	0	0
Chincoteague									2			n/a	n/a	n/a
Saxis												2	1	0
Bloxom				4					3			6	4	0
Parksley			10						1			0	4	0
Onancock					1				2			0	3	0
Melfa					1		3		3			2	1	0
Wachapreague												4	0	0
Onley					2							0	3	0
Oak Hall	2	3										0	6	0
Community (Exmore)						2	1					3	0	0
Total	2	n/a	3	10	4	3	3	4	3	6	3	19	22	0

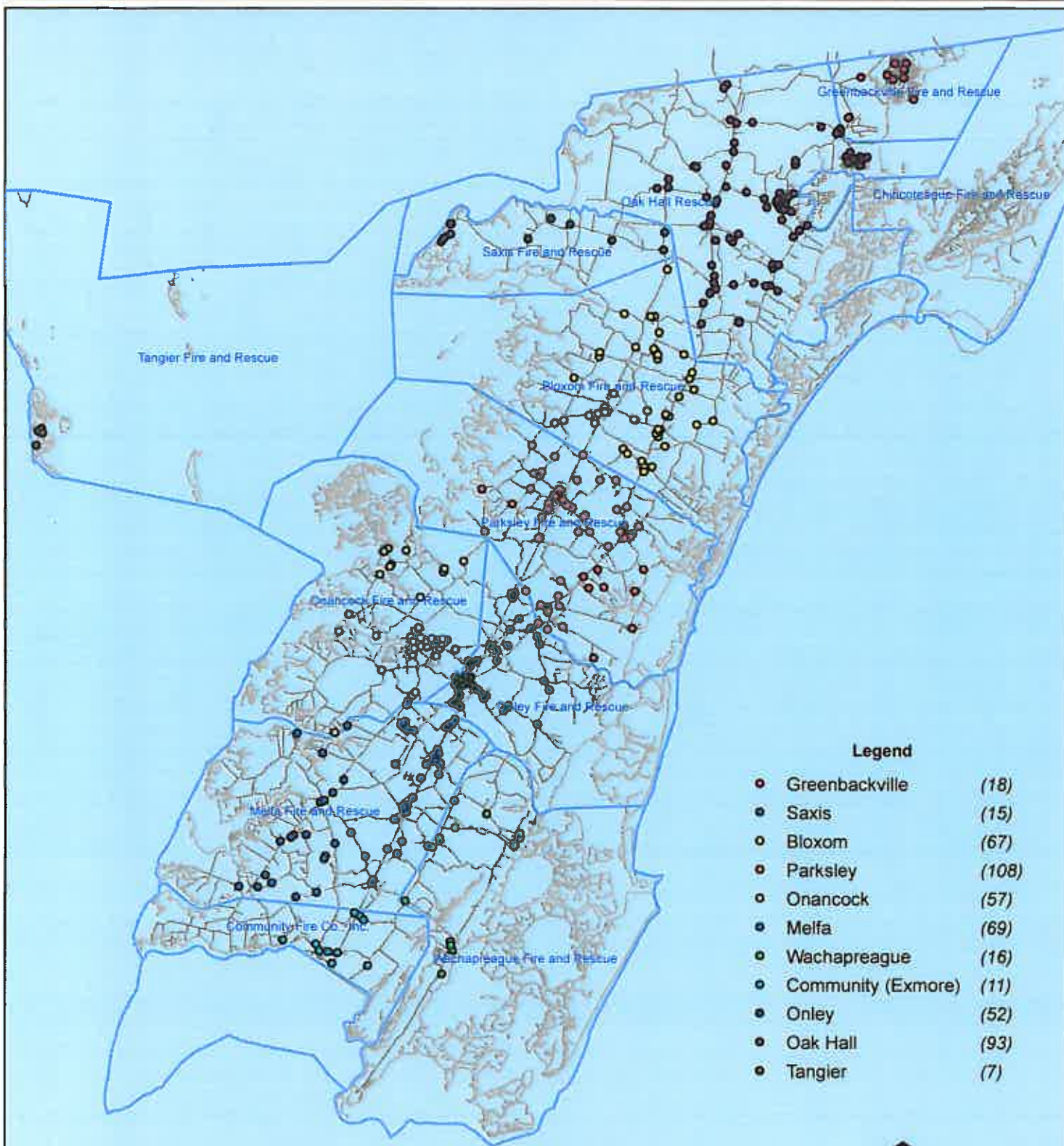
NORS = No Response. Call was handled by another station/agency.

2nd Call = 2nd Ambulance call received while First Ambulance was busy on another call.

3rd Call = 3rd ambulance call received while First and Second Ambulances were on other call.

This information was prepared using data supplied by the Eastern Shore of Virginia 911 Center  
 This information is original incident data only and may not be representative of all units or stations who responded to an incident.

# August 2011 EMS Calls By District



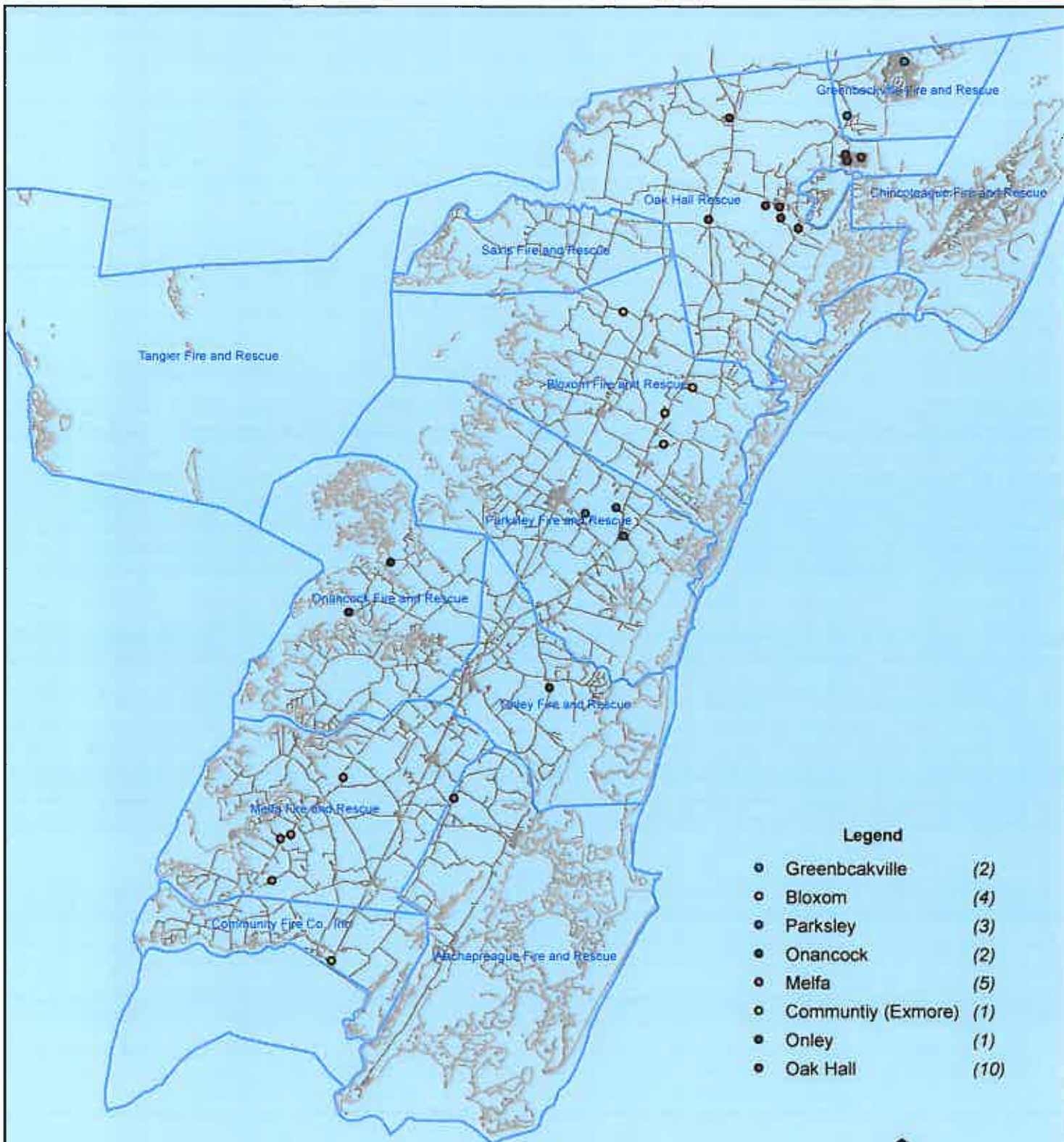
No Data Available For Chincoteague



All points are plotted using X and Y coordinates provided by the ESVA 911 Center. Points may be plotted over one another when they are in close proximity.

Map Prepared using Data from the ESVA 911 Center

# August 2011 EMS Calls With Response Time Greater Than 20 Mins.



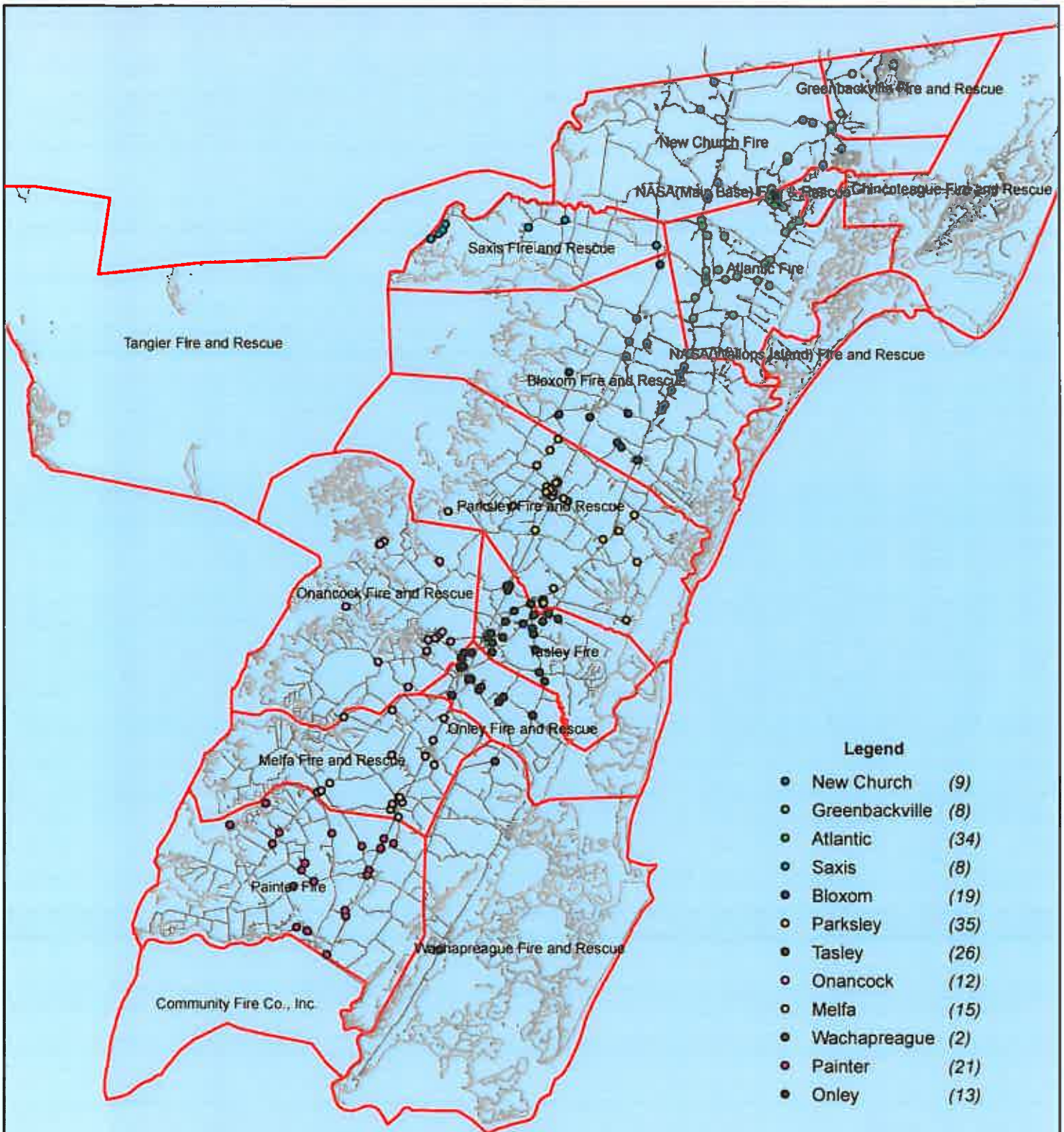
No Data Available For Chincoteague



All points are plotted using X and Y coordinates provided by the ESVA 911 Center. Points maybe be plotted over one another when they are in close proximity.

Map Prepared using Data from the ESVA 911 Center

# August 2011 Fire Calls By District



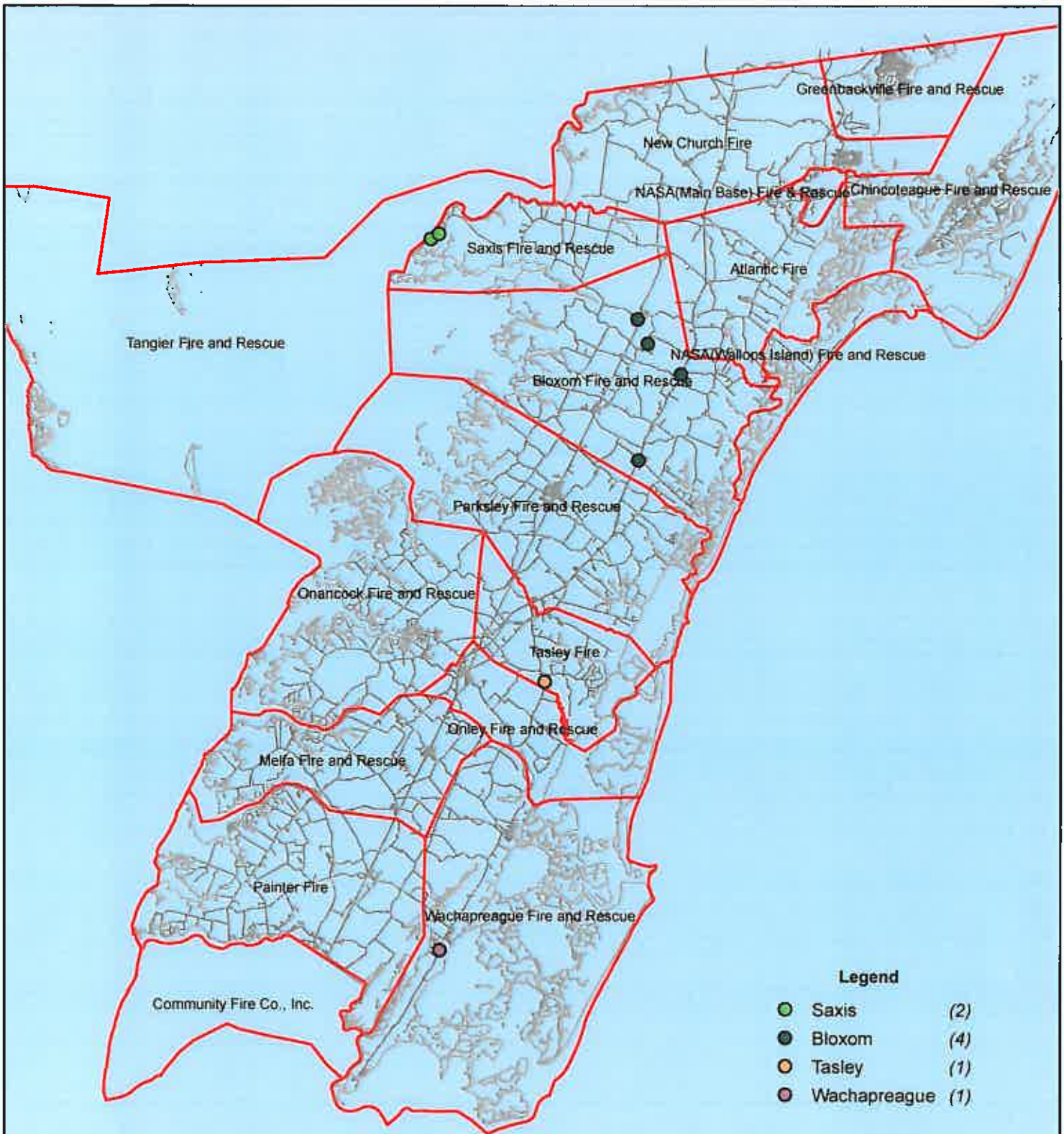
No Data Available For Chincoteague



All points are plotted using X and Y coordinates provided by the ESVA 911 Center. Points may be plotted over one another when they are in close proximity.

Map Prepared using Data from the ESVA 911 Center

# August 2011 Fire Calls With Response Time Greater Than 20 Mins.



No Data Available For Chincoteague

### Legend

- Saxis (2)
- Bloxom (4)
- Tasley (1)
- Wachapreague (1)



0 5,000 10,000 15,000 20,000 40,000 Feet

Map Prepared using Data from the ESVA 911 Center

All points are plotted using X and Y coordinates provided by the ESVA 911 Center. Points may be plotted over one another when they are in close proximity.