

Fire - Performance Measure Data					
Station	Total Calls	Greater than 20 min. Response	%	Max. Response Time	NORS
New Church	15	0	100%	17:56	0
Greenbackville	2	0	100%	3:24	0
Chincoteague	N/A	N/A	N/A	N/A	N/A
Atlantic	8	0	100%	17:12	0
Saxis	3	0	100%	15:00	0
Bloxom	20	1	95%	22:43	1
Parksley	12	0	100%	9:50	0
Tasley	8	0	100%	11:47	0
Onancock	4	0	100%	10:43	0
Melfa	13	0	100%	18:58	0
Wachapreague	3	0	100%	15:02	0
Painter	9	0	100%	14:50	0
Onley	8	0	100%	7:02	0
Tangier	1	0	100%	2:12	0
Totals:	106	1	99%		1

Chincoteague Data Not Available

EMS - Performance Measure Data							
Station	Total Calls	Career	Combination	Greater than 20 min. Response	%	Max. Response Time	NORS
Greenbackville	12	3	2	3	75%	37:51	2
Chincoteague	N/A	N/A	N/A	N/A	N/A	N/A	N/A
Saxis	13	2	3	3	77%	30:02	1
Bloxom	47	19	7	3	94%	29:35	5
Parksley	98	26	55	2	98%	31:12	0
Onancock	48	20	33	1	98%	20:50	0
Melfa	58	28	1	3	95%	27:05	0
Wachapreague	15	5	2	1	93%	24:23	7
Onley	39	12	24	0	100%	19:08	0
Oak Hall	76	27	48	11	86%	26:18	0
Tangier	14	0	0	1	93%	21:40	0
Community (Exmore)	6	0	0	0	100%	16:39	0
Totals	426	142	175	28	93%	31:12	15

Chincoteague Data Not Available

EMS Mutual Aid Data

Station Receiving Aid

Station : Giving Aid	Greenbackville	Chincoteague	Saxis	Bloxom	Parksley	Onancock	Melfa	Wachapreague	Onley	Oak Hall	Community (Exmore)	NORS	2nd Call	3rd Call
Greenbackville								5				2		
Chincoteague								2				n/a	n/a	n/a
Saxis								2				1	1	
Bloxom				3				2				5	2	0
Parksley			7		1							0	3	1
Onancock				1				1				0	0	1
Melfa							6		2			0	0	0
Wachapreague												7	0	0
Onley						1						0	1	0
Oak Hall	2	2										0	10	1
Community (Exmore)												0	2	0
Total	2	n/a	2	7	4	1	0	7	1	11	2	15	19	3

April 2011

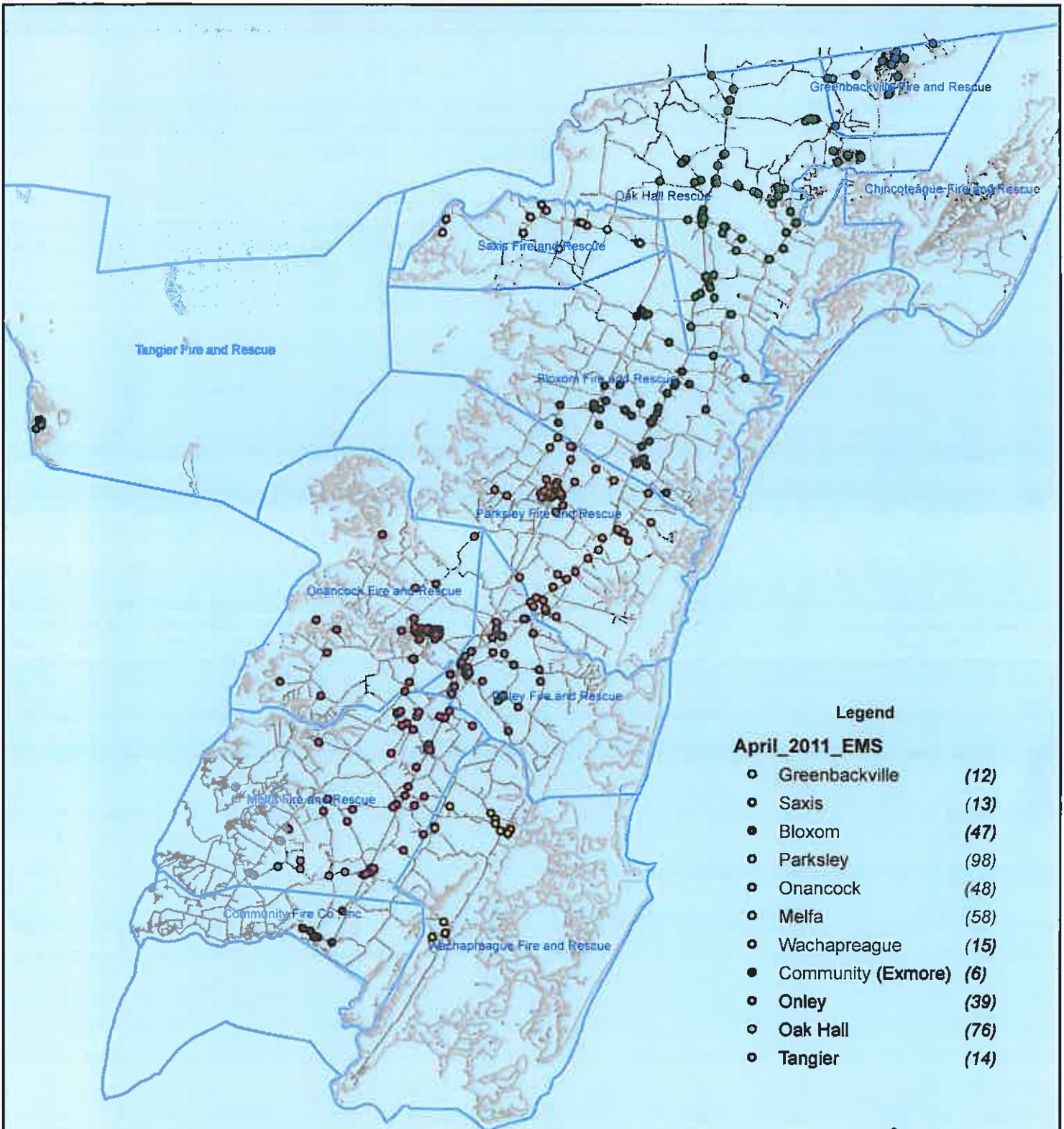
NORS = No Response. Call was handled by another station/agency.

2nd Call = 2nd Ambulance call received while First Ambulance was busy on another call.

3rd Call = 3rd ambulance call received while First and Second Ambulances were on other call.

This information was prepared using data supplied by the Eastern Shore of Virginia 911 Center

April 2011 EMS Calls By District



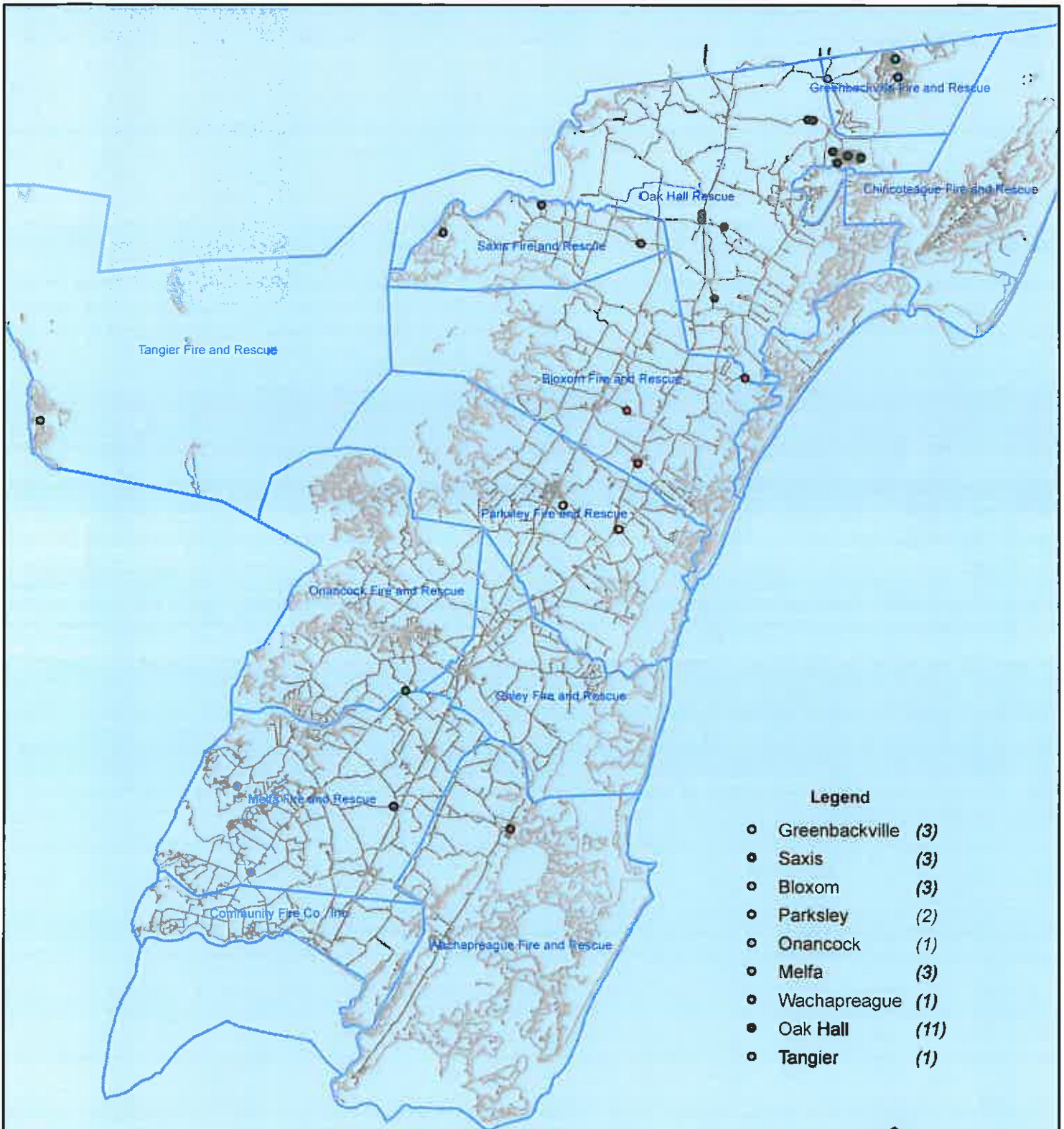
No Data Available For Chincoteague



All points are plotted using X and Y coordinates provided by the ESVA 911 Center. Points may be plotted over one another when they are in close proximity.

Map Prepared using Data from the ESVA 911 Center

April 2011 EMS Calls With Response Time Greater Than 20 Mins.



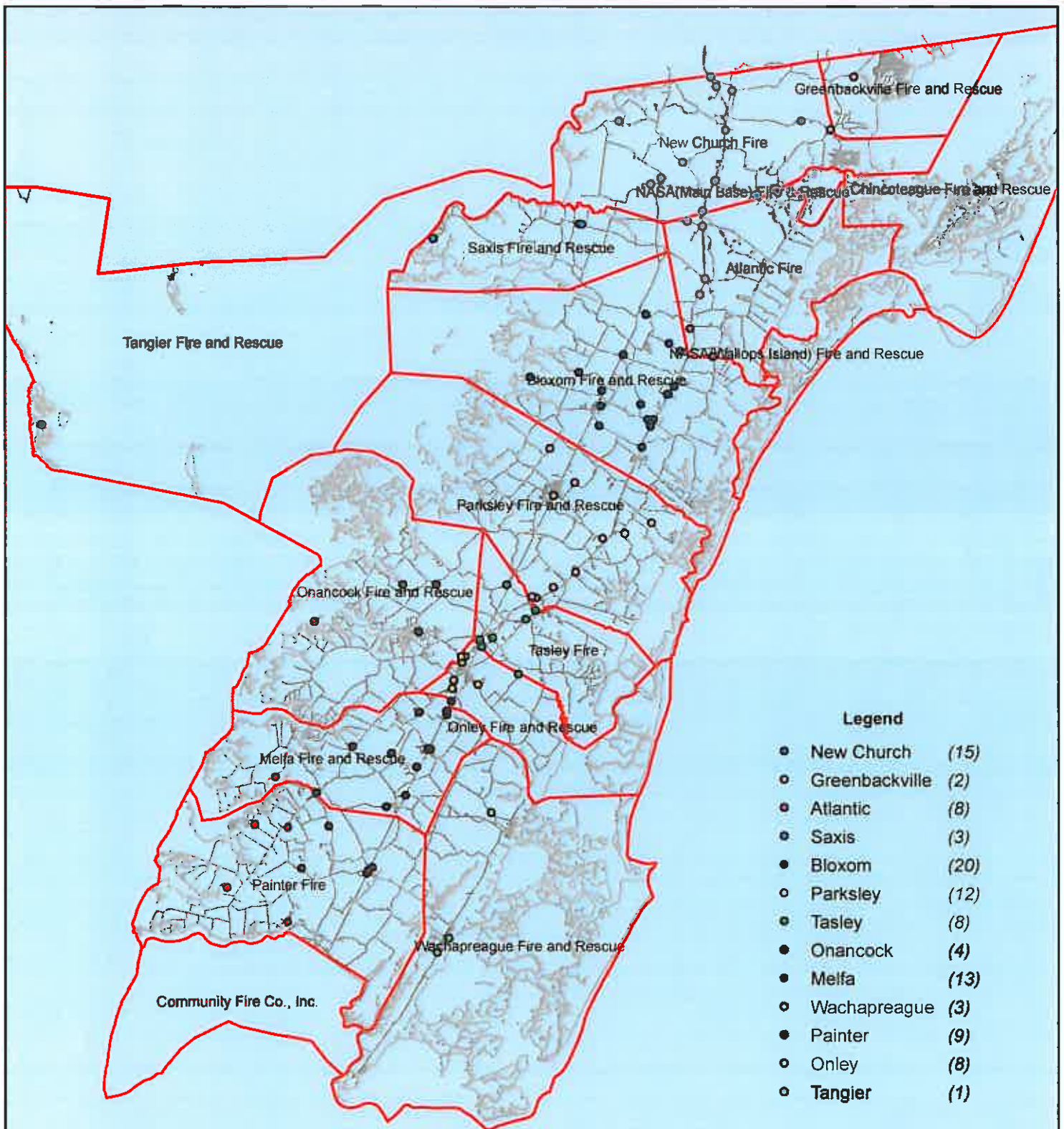
No Data Available For Chincoteague



All points are plotted using X and Y coordinates provided by the ESVA 911 Center. Points may be plotted over one another when they are in close proximity.

Map Prepared using Data from the ESVA 911 Center

April 2011 Fire Calls By District



Legend

- New Church (15)
- Greenbackville (2)
- Atlantic (8)
- Saxis (3)
- Bloxom (20)
- Parksley (12)
- Tasley (8)
- Onancock (4)
- Melfa (13)
- Wachapreague (3)
- Painter (9)
- Onley (8)
- Tangier (1)

No Data Available For Chincoteague



All points are plotted using X and Y coordinates provided by the ESVA 911 Center. Points may be plotted over one another when they are in close proximity.



Map Prepared using Data from the ESVA 911 Center

April 2011 Fire Calls With Response Time Greater Than 20 Mins.



No Data Available For Chincoteague

Legend

● Bloxom (1)



0 1000 2000 3000 4000 5000 Feet

Map Prepared using Data from the ESVA 911 Center

All points are plotted using X and Y coordinates provided by the ESVA 911 Center. Points maybe be plotted over one another when they are in close proximity.