

May 2021

Fire - Performance Measure Data *					
Response District	Total Calls in District	Greater than 20 min. Response Time	Longest Response Time	Calls Handled by other agency	Overall Station Benchmark %
New Church	13	0	0:18:13	0	100.0%
Greenbackville	1	0	0:10:24	0	100.0%
Chincoteague	8	0	0:11:55	0	100.0%
Atlantic	14	0	0:13:19	1	100.0%
Saxis	0	0	0	0	#DIV/0!
Bloxom	12	0	0:14:09	4	100.0%
Parksley	20	0	0:17:25	1	100.0%
Tasley	8	1	0:28:06	3	87.5%
Onancock	4	0	0:15:54	0	100.0%
Melfa	6	0	0:13:43	3	100.0%
Wachapreague	8	0	0:18:33	1	100.0%
Painter	6	0	0:14:50	0	100.0%
Tangier	2	0	0:11:00	0	100.0%
System Totals	102	1	0:28:06	13	99.0%

EMS - Performance Measure Data						
Response District	Total Calls in District	Greater than 20 min. Response Time	Longest Response Time	Calls Handled by other agency	Station Benchmark Compliance %	Overall Station Reliability %
Greenbackville	15	2	0:22:33	12	86.7%	20.0%
Chincoteague	81	3	0:32:50	6	96.3%	92.6%
Saxis	11	0	0:16:27	1	100.0%	90.9%
Bloxom	46	0	0:18:02	7	100.0%	84.8%
Parksley	79	1	0:20:21	5	98.7%	93.7%
Onancock	86	0	0:19:38	1	100.0%	98.8%
Melfa	37	0	0:17:42	5	100.0%	86.5%
Wachapreague (Painter)	41	0	0:14:58	0	100.0%	100.0%
Oak Hall	81	1	0:20:49	11	98.8%	86.4%
Tangier	12	0	0:09:48	0	100.0%	100.0%
Community (Exmore)	5	0	0:11:50	0	100.0%	100.0%
System Totals	494	7	0:32:50	48	98.6%	90.3%

EMS Mutual Aid Data															
	Station Giving Aid														
	Greenbackville	Chincoteague	Saxis	Bloxom	Parksley	Onancock	Melfa	Wachapreague/Painter	Oak Hall	Community (Exmore)	Northampton	Wallops	NORS	2nd Call	3rd Call
Greenbackville								12					12		
Chincoteague					1			5						5	1
Saxis								1					1		
Bloxom					6			1					2	5	
Parksley				2		3							2	3	
Onancock							1						1		
Melfa				1	1		2		1				2	3	
Wachapreague (Painter)															
Oak Hall	3	4	1	3									3	7	1
Community (Exmore)															
Northampton Co.															
Wallops															
Totals	3	4	1	6	7	4	1	2	19	1	0	0	23	23	2

Station Receiving Aid

Transport Destination			
Hospital Destination by Unit	Riverside - Shore Memorial	PRMC / Tidal Health	Other
Chincoteague	13	31	3
Saxis	7	3	
Bloxom	24	3	
Parksley	51		2
Onancock	62		
Melfa	22		
Wachapreague (Painter)	30		1
Oak Hall	29	31	3
Wallops			
Totals	241	71	9

Benchmark = The Accomack County Board of Supervisors established a 20 minute standard for emergency response.

NORS = No Response by station or the call was handled by another station or agency.

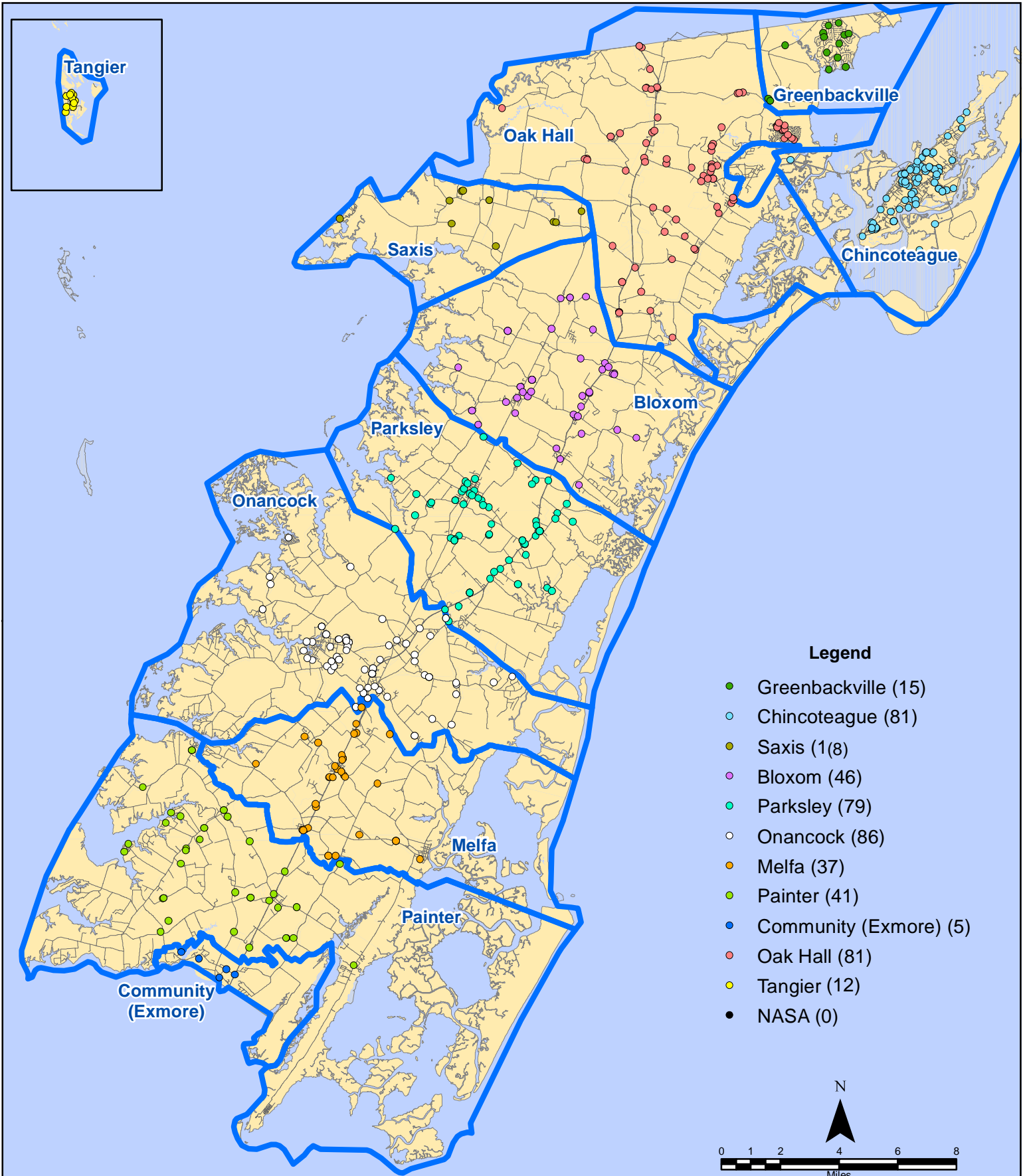
2nd Call = 2nd ambulance call received while first ambulance was on another call.

3rd Call = 3rd ambulance call received while first & second ambulances were on other calls.

* This data excludes F1 Med (Medical Assist) calls in the Fire Data.

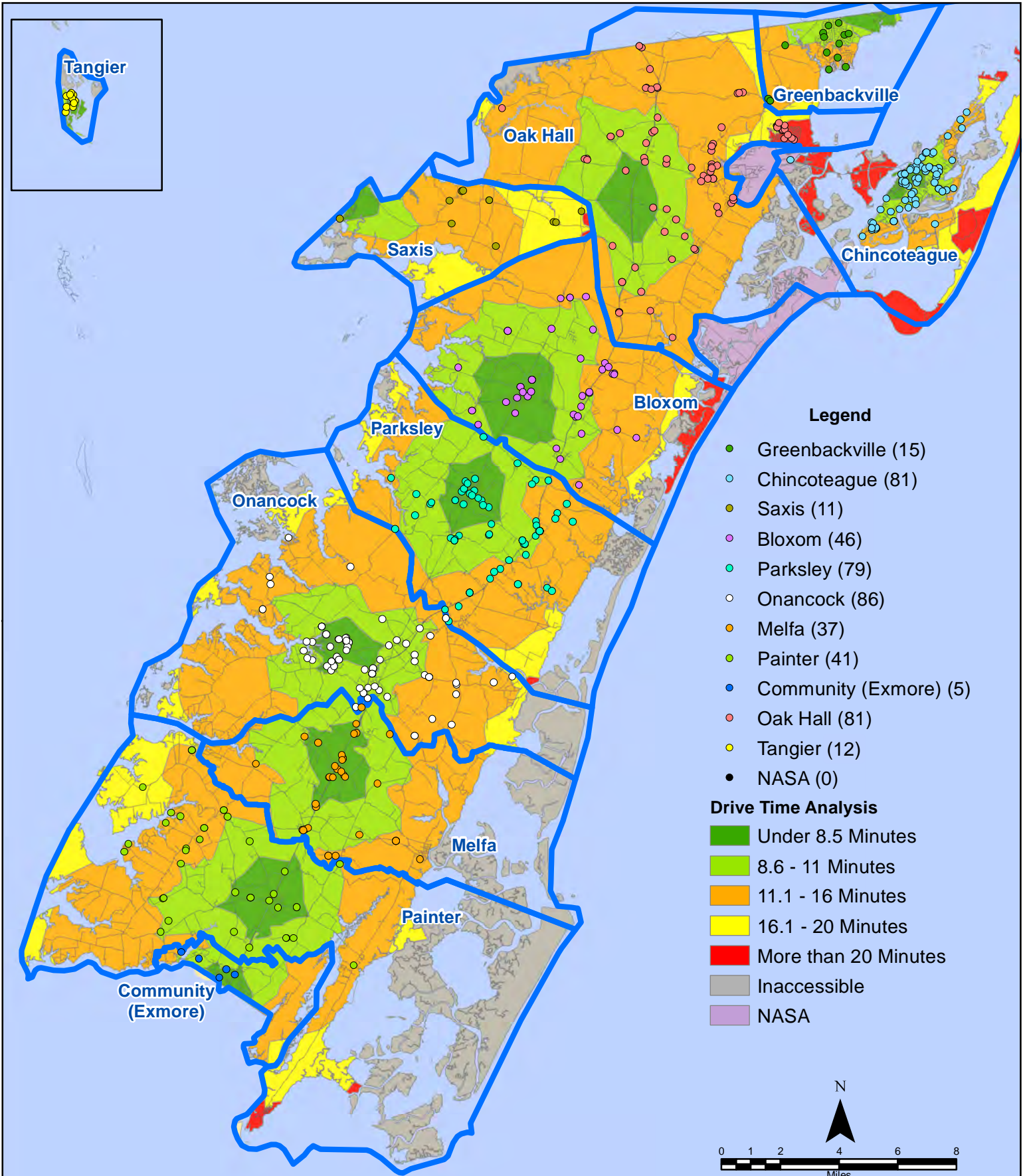
This information was prepared using data supplied by the Eastern Shore of Virginia 911 Center. This information is original incident data only and may not be representative of all units and/or stations who responded to an incident.

May 2021 EMS Calls By District

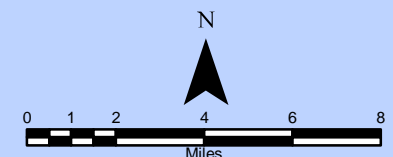


All points are plotted using X and Y coordinates provided by the ESVA 911 Center.
Points may be plotted over one another when they are in close proximity.

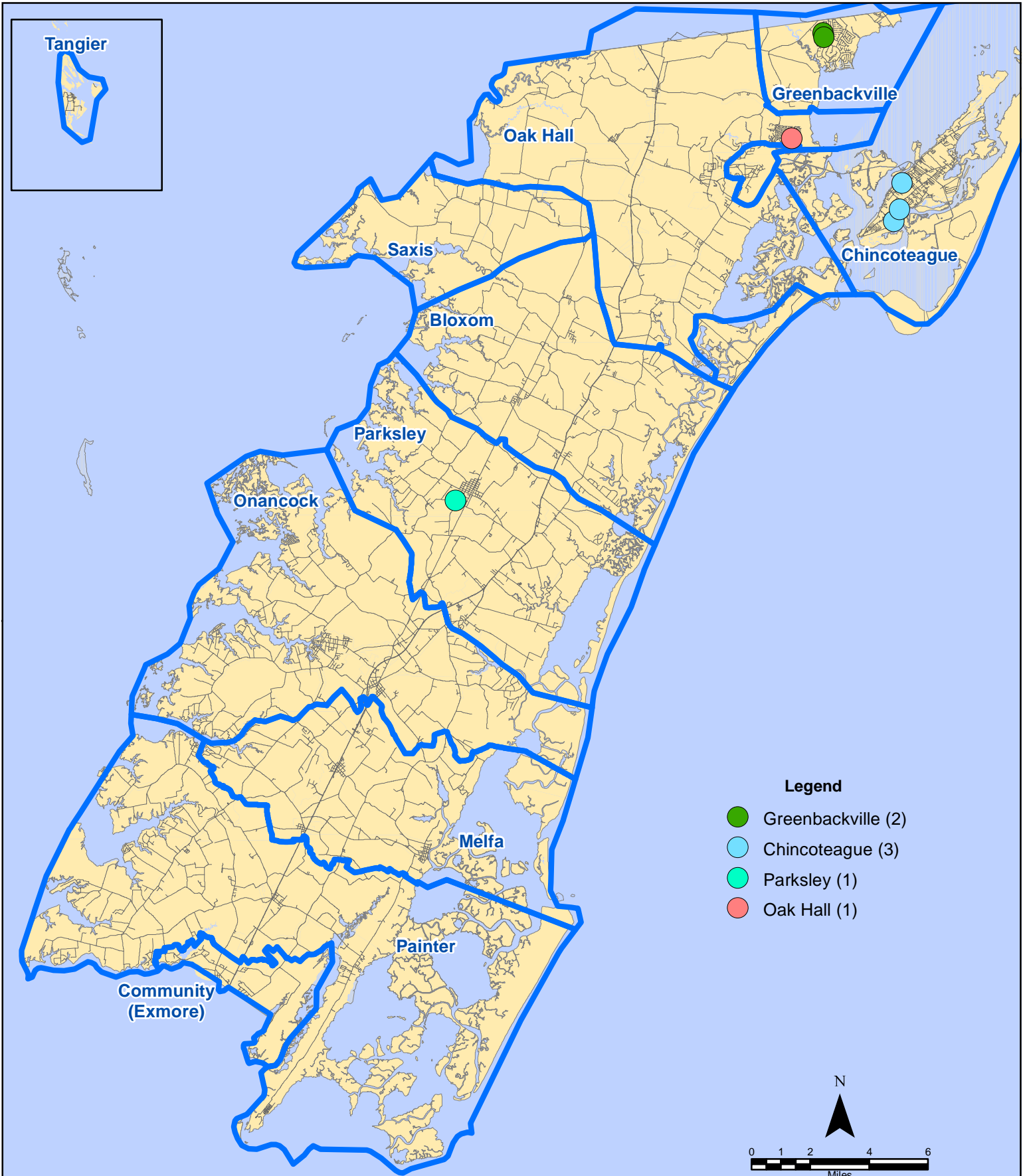
May 2021 EMS Calls By District



All points are plotted using X and Y coordinates provided by the ESVA 911 Center. Points may be plotted over one another when they are in close proximity.



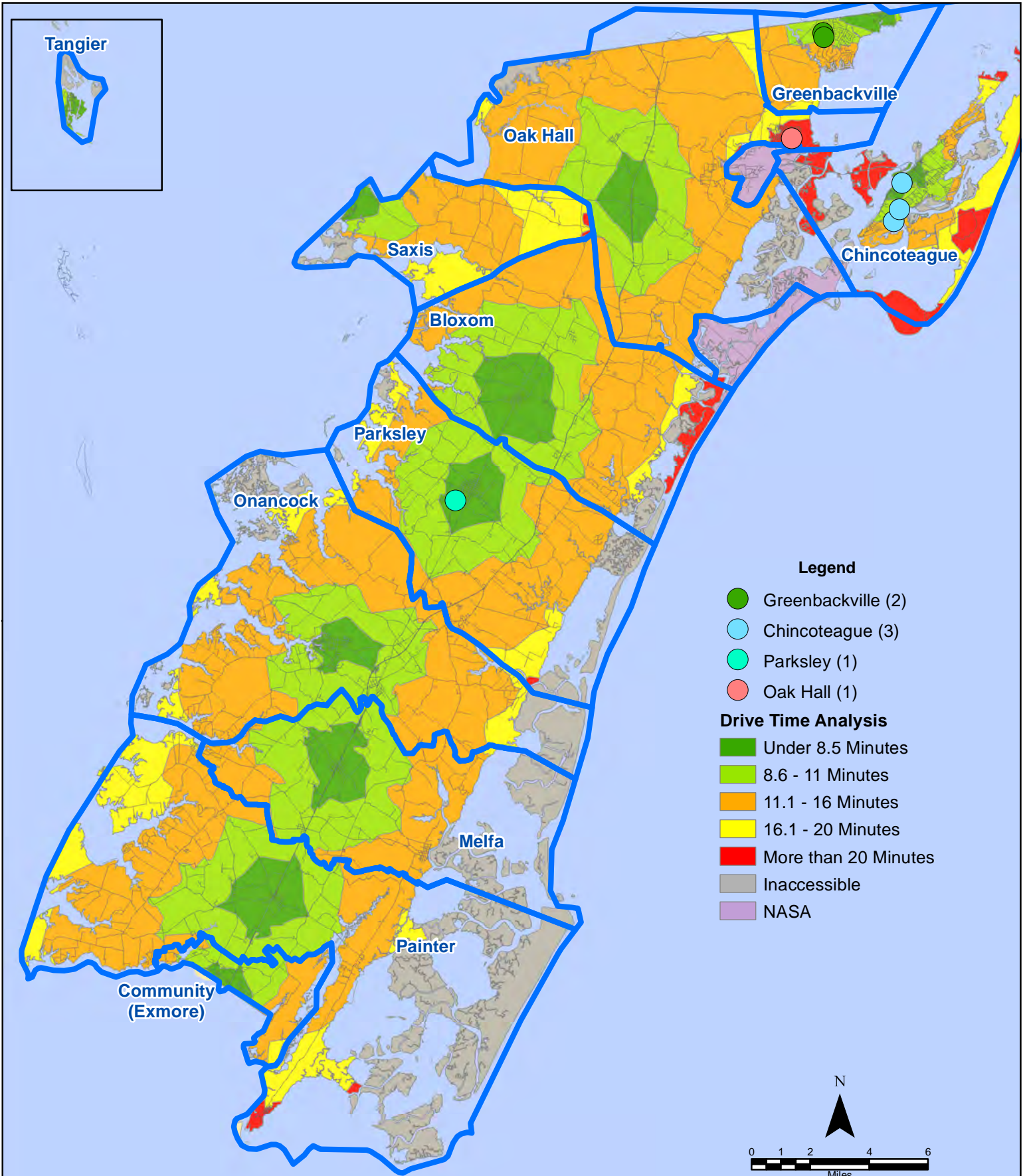
May 2021 EMS Calls With Response Time Greater Than 20 Mins.



All points are plotted using X and Y coordinates provided by the ESVA 911 Center. Points may be plotted over one another when they are in close proximity.

Map Prepared by the Accomack County Department of Building, Planning & Economic Development using data from the ESVA 911 Center - June 7, 2021

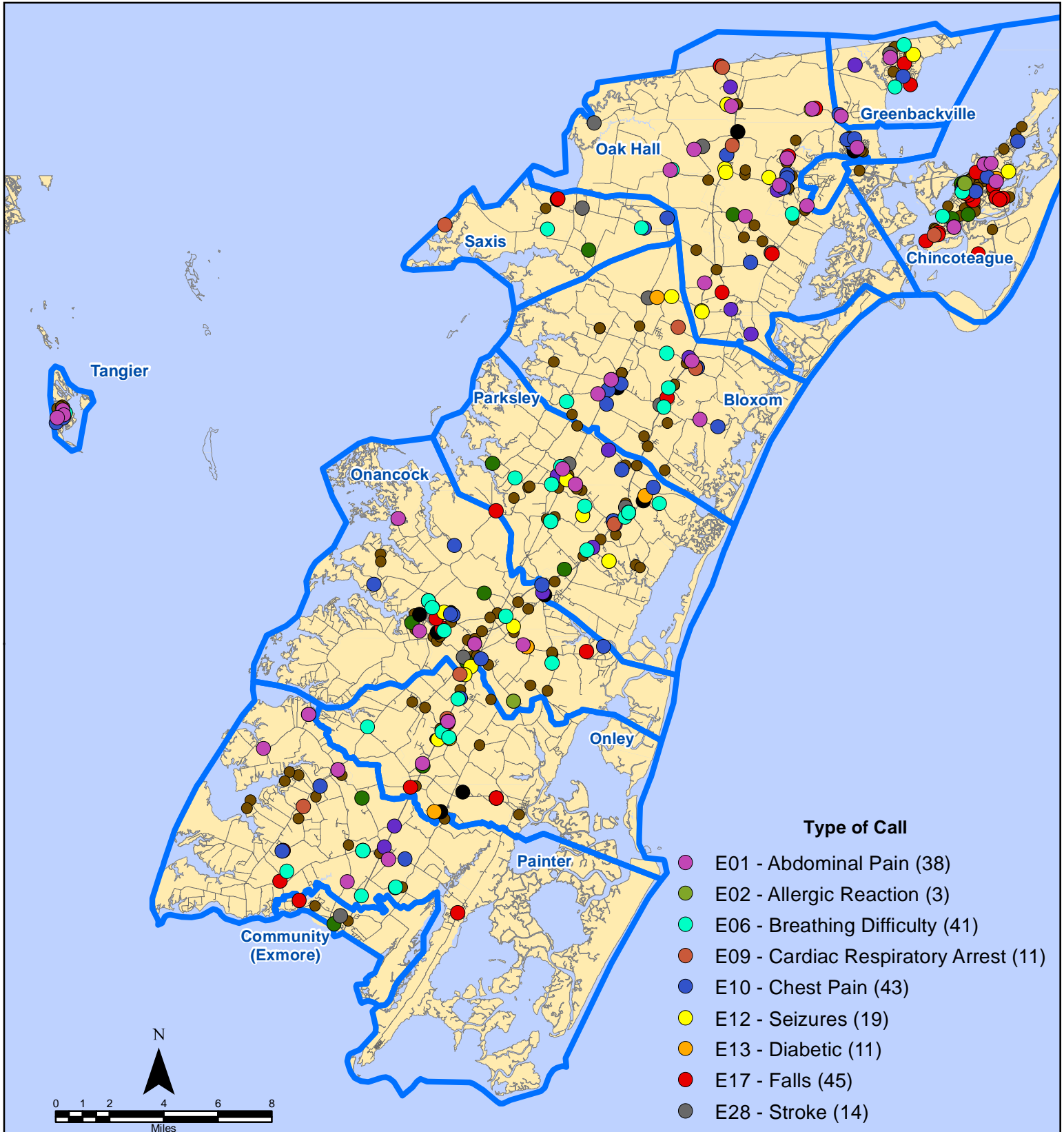
May 2021 EMS Calls With Response Time Greater Than 20 Mins.



All points are plotted using X and Y coordinates provided by the ESVA 911 Center. Points may be plotted over one another when they are in close proximity.

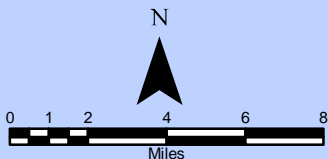
Map Prepared by the Accomack County Department of Building, Planning & Economic Development using data from the ESVA 911 Center - June 7, 2021

May 2021 EMS Calls By Type



Type of Call

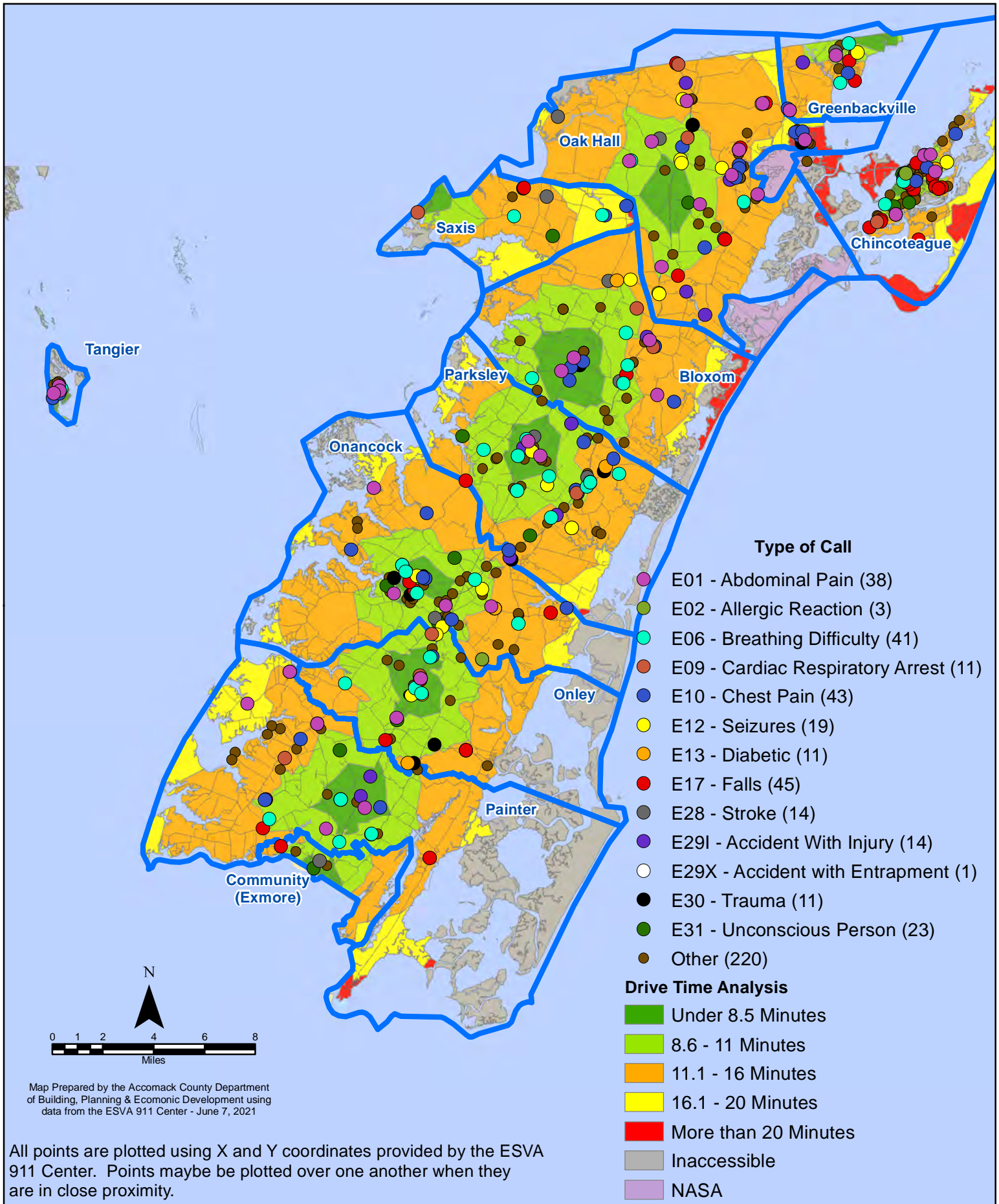
- E01 - Abdominal Pain (38)
- E02 - Allergic Reaction (3)
- E06 - Breathing Difficulty (41)
- E09 - Cardiac Respiratory Arrest (11)
- E10 - Chest Pain (43)
- E12 - Seizures (19)
- E13 - Diabetic (11)
- E17 - Falls (45)
- E28 - Stroke (14)
- E29I - Accident With Injury (14)
- E29X - Accident with Entrapment (1)
- E30 - Trauma (11)
- E31 - Unconscious Person (23)
- Other (220)



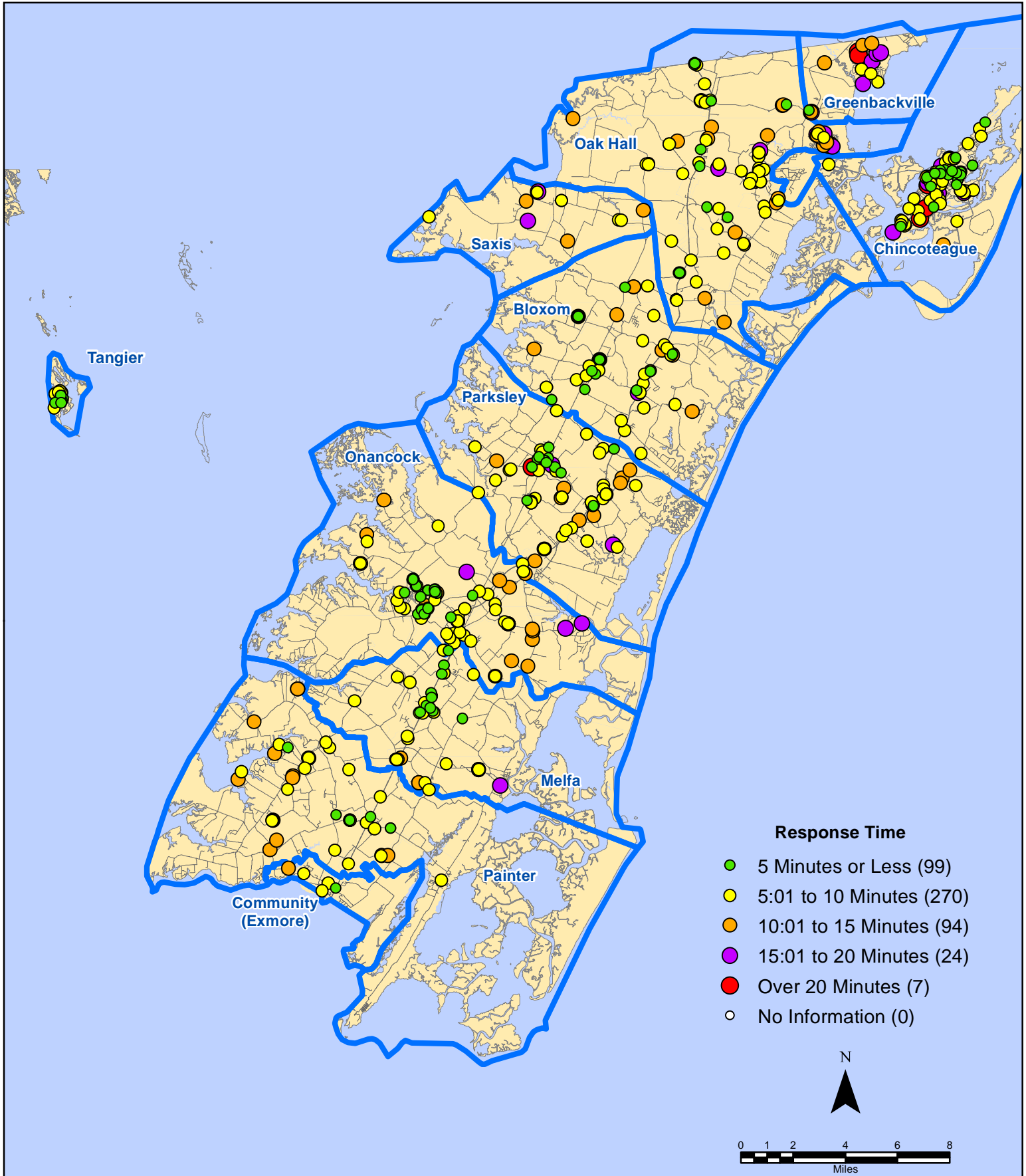
Map Prepared by the Accomack County Department of Building, Planning & Economic Development using data from the ESVA 911 Center - June 7, 2021

All points are plotted using X and Y coordinates provided by the ESVA 911 Center. Points may be plotted over one another when they are in close proximity.

May 2021 EMS Calls By Type



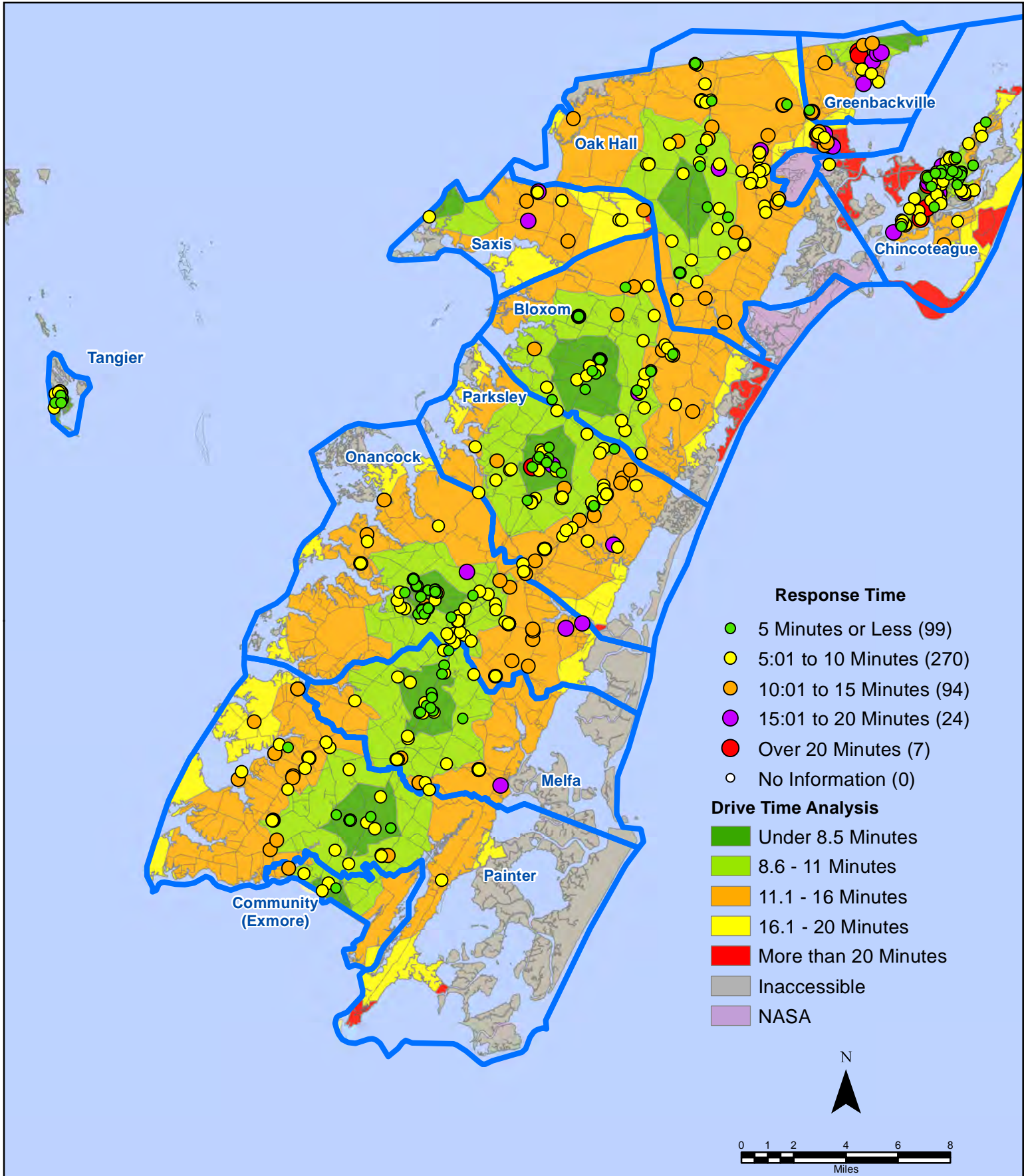
May 2021 EMS Calls By Response Time



All points are plotted using X and Y coordinates provided by the ESVA 911 Center.
Points may be plotted over one another when they are in close proximity.

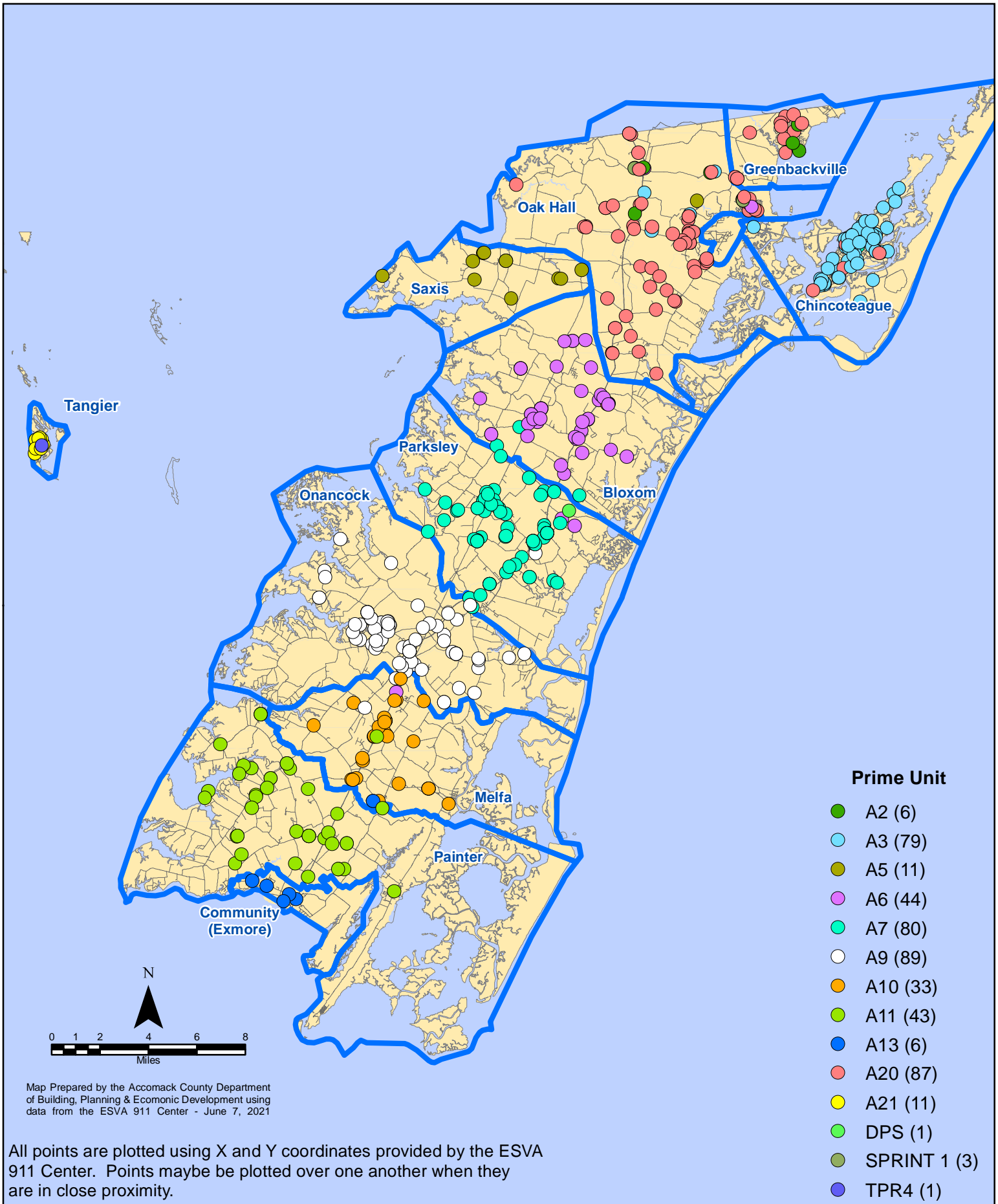
Map Prepared by the Accomack County Department of Building, Planning & Economic Development using data from the ESVA 911 Center - June 7, 2021

May 2021 EMS Calls By Response Time

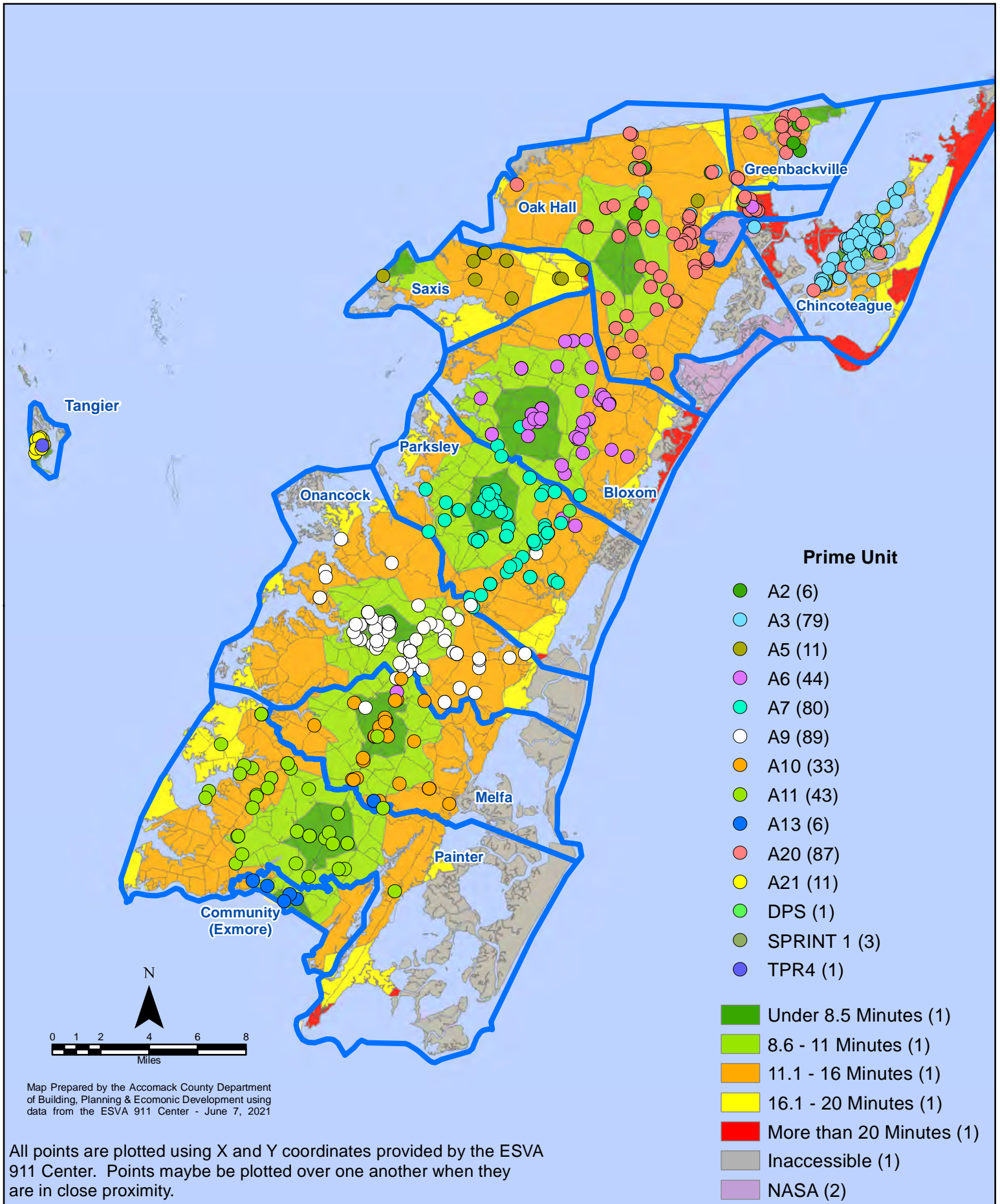


All points are plotted using X and Y coordinates provided by the ESVA 911 Center. Points may be plotted over one another when they are in close proximity.

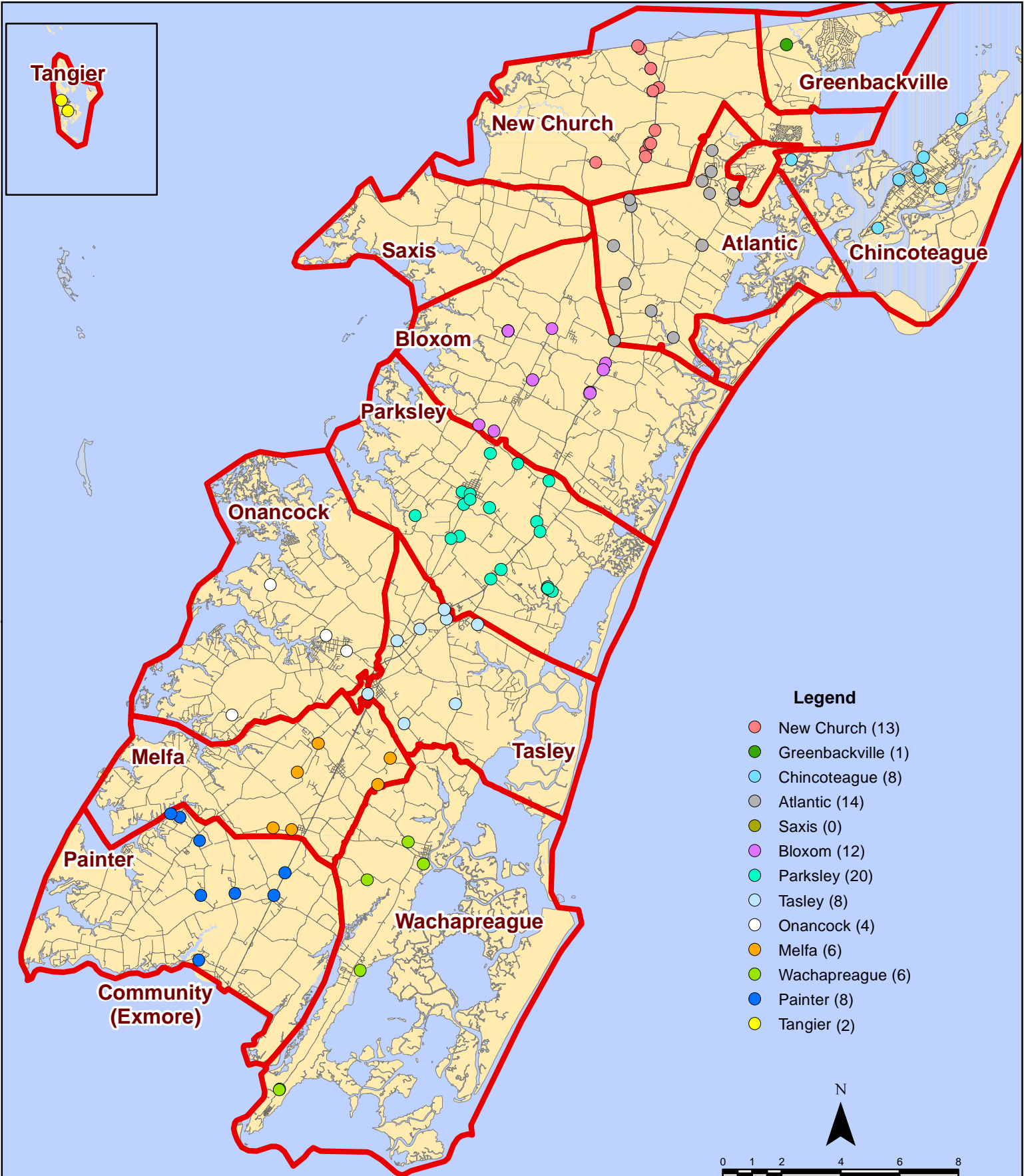
May 2021 EMS Calls By Prime Unit



May 2021 EMS Calls By Prime Unit



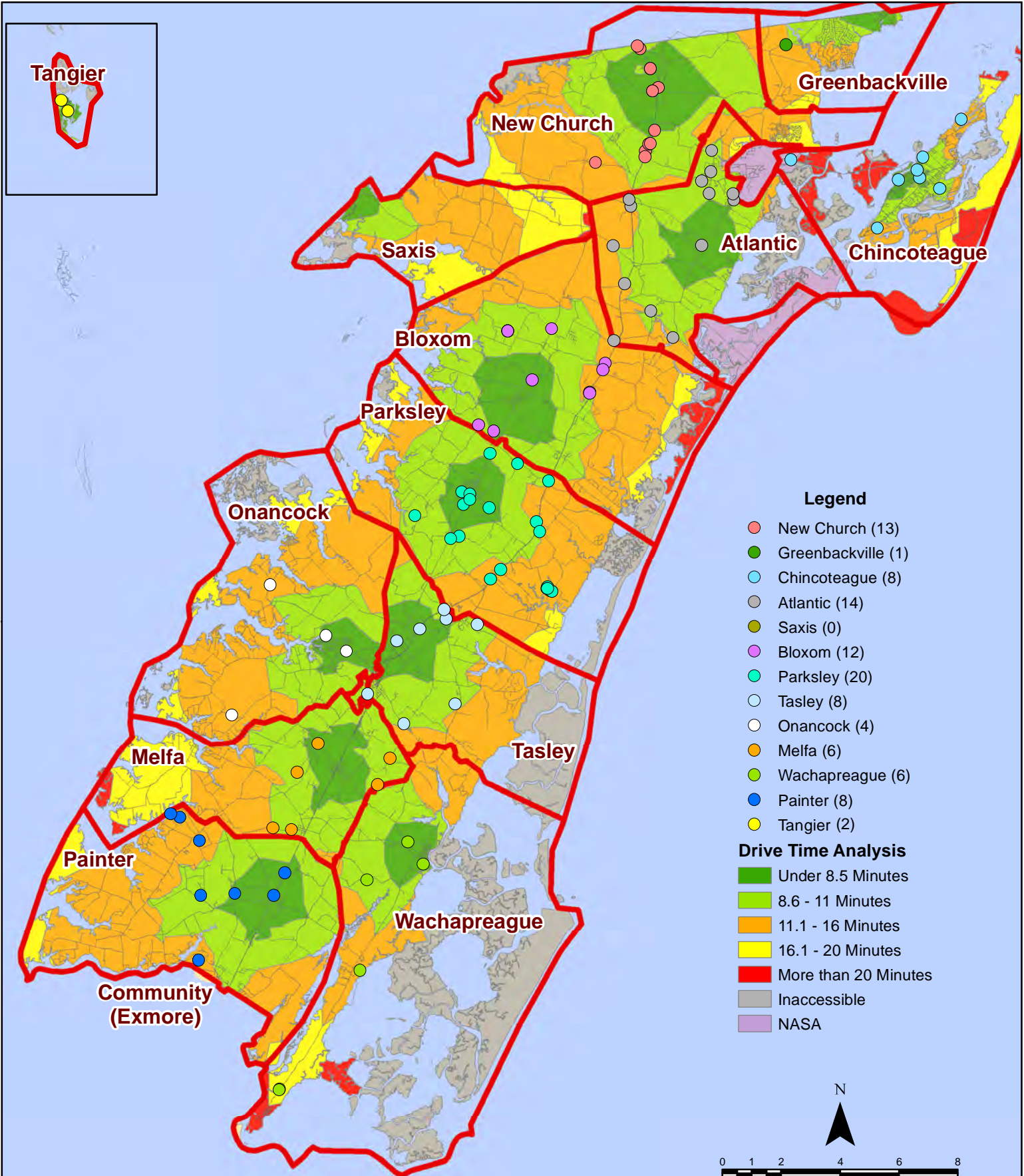
May 2021 Fire Calls By District



All points are plotted using X and Y coordinates provided by the ESVA 911 Center. Points may be plotted over one another when they are in close proximity.

Map Prepared by the Accomack County Department of Building, Planning & Economic Development using data from the ESVA 911 Center - June 7, 2021

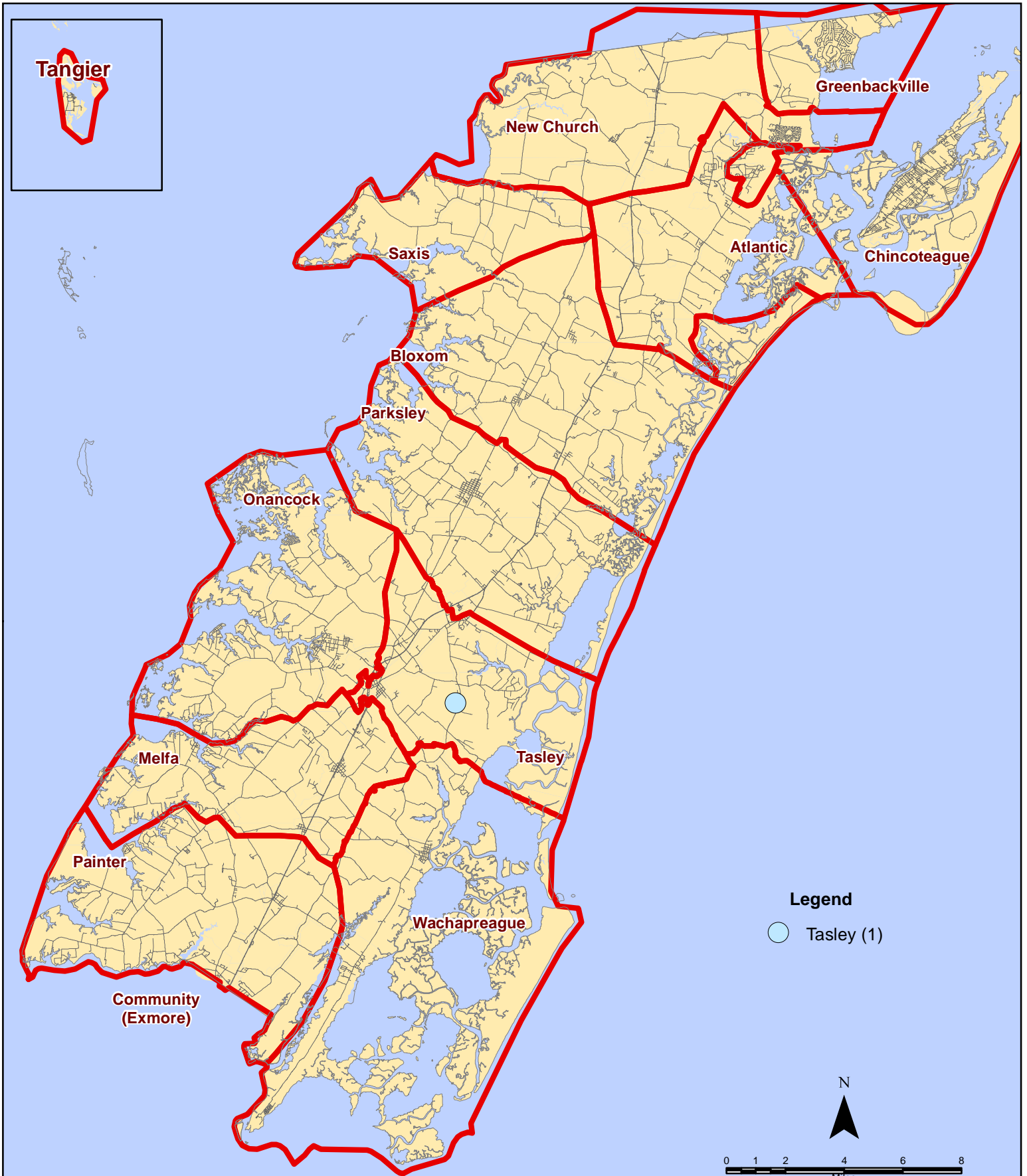
May 2021 Fire Calls By District



All points are plotted using X and Y coordinates provided by the ESVA 911 Center. Points may be plotted over one another when they are in close proximity.

Map Prepared by the Accomack County Department of Building, Planning & Economic Development using data from the ESVA 911 Center - June 7, 2021

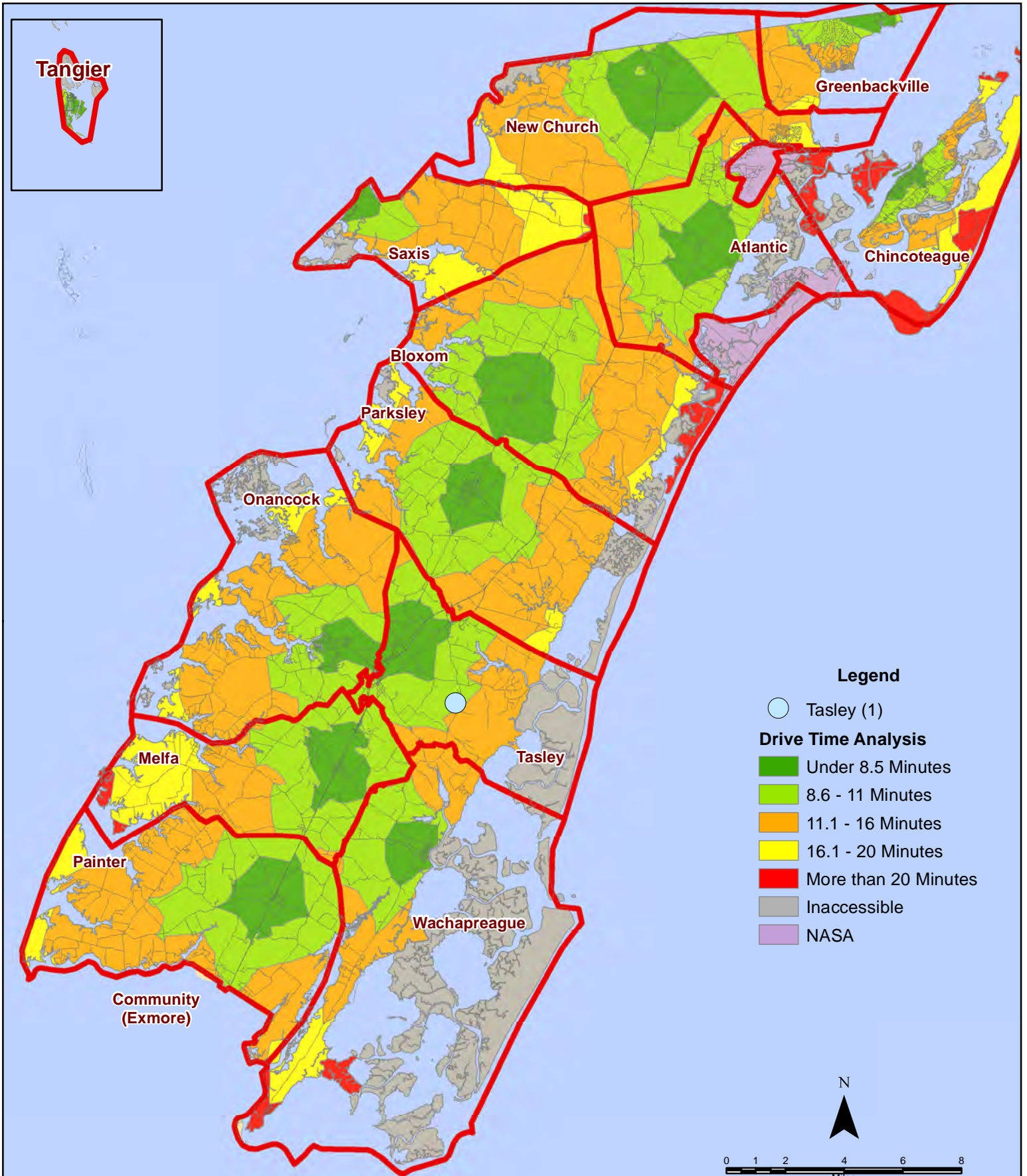
May 2021 Fire Calls With Response Time Greater Than 20 Mins.



All points are plotted using X and Y coordinates provided by the ESVA 911 Center. Points may be plotted over one another when they are in close proximity.

Map Prepared by the Accomack County Department of Building, Planning & Economic Development using data from the ESVA 911 Center - June 7, 2021

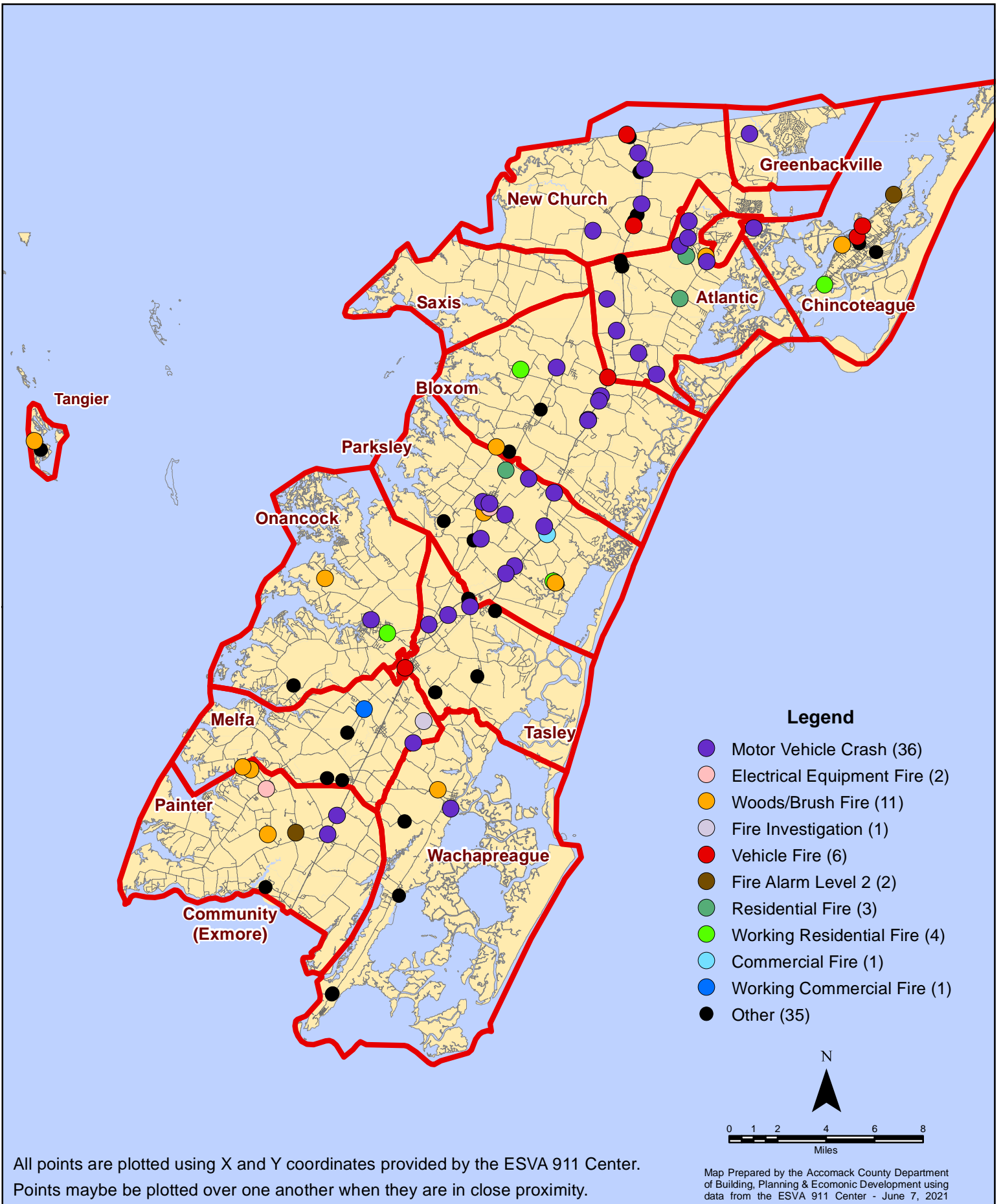
May 2021 Fire Calls With Response Time Greater Than 20 Mins.



All points are plotted using X and Y coordinates provided by the ESVA 911 Center. Points may be plotted over one another when they are in close proximity.

Map Prepared by the Accomack County Department of Building, Planning & Economic Development using data from the ESVA 911 Center - June 7, 2021

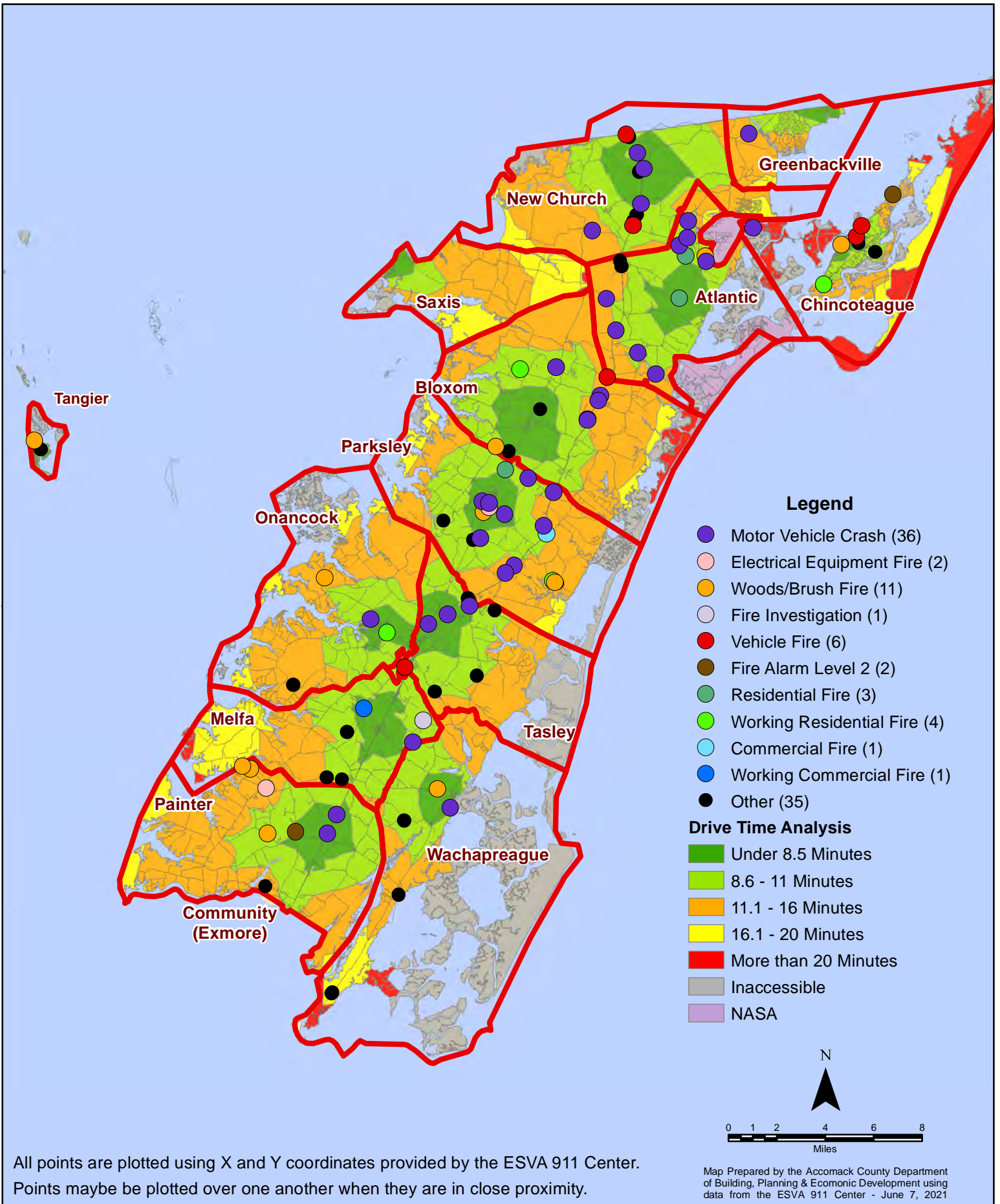
May 2021 Fire Calls By Type



All points are plotted using X and Y coordinates provided by the ESVA 911 Center. Points may be plotted over one another when they are in close proximity.

Map Prepared by the Accomack County Department of Building, Planning & Economic Development using data from the ESVA 911 Center - June 7, 2021

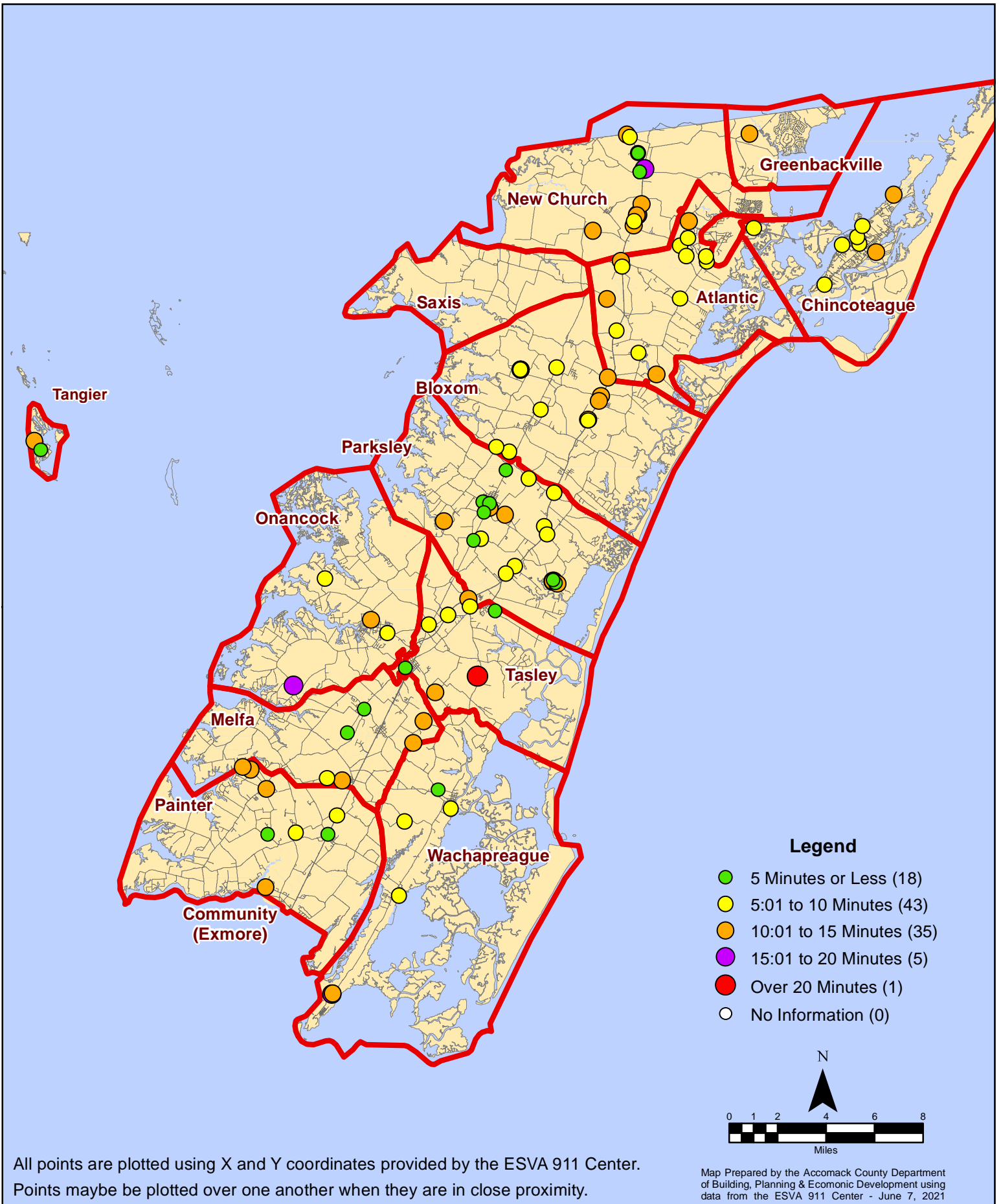
May 2021 Fire Calls By Type



All points are plotted using X and Y coordinates provided by the ESVA 911 Center. Points may be plotted over one another when they are in close proximity.

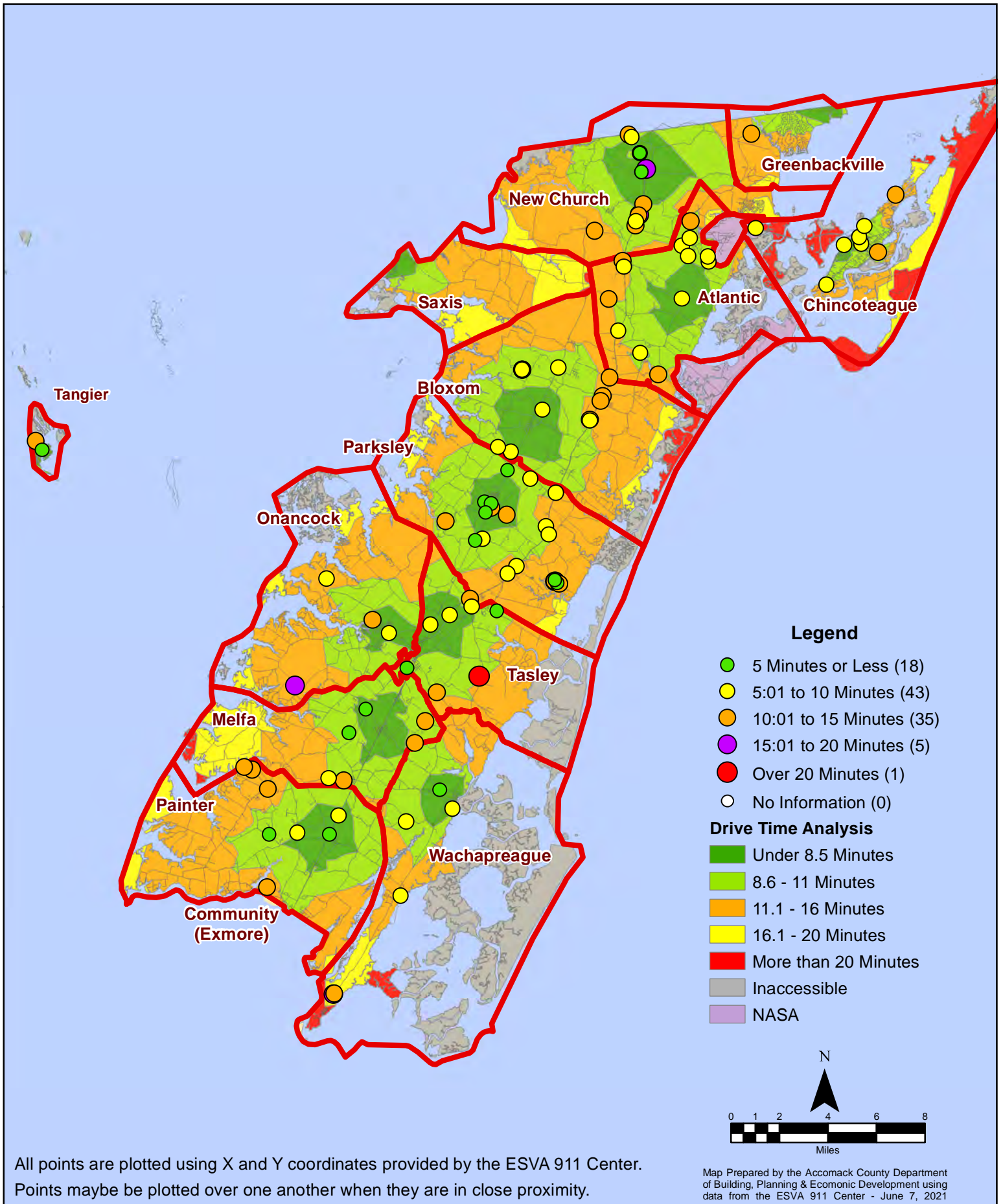
Map Prepared by the Accomack County Department of Building, Planning & Economic Development using data from the ESVA 911 Center - June 7, 2021

May 2021 Fire Calls By Response Time



All points are plotted using X and Y coordinates provided by the ESVA 911 Center. Points may be plotted over one another when they are in close proximity.

May 2021 Fire Calls By Response Time



All points are plotted using X and Y coordinates provided by the ESVA 911 Center. Points may be plotted over one another when they are in close proximity.

Map Prepared by the Accomack County Department of Building, Planning & Economic Development using data from the ESVA 911 Center - June 7, 2021