

# August 2021

Fire - Performance Measure Data *					
Response District	Total Calls in District	Greater than 20 min. Response Time	Longest Response Time	Calls Handled by other agency	Overall Station Benchmark %
New Church	13	0	0:15:02	1	100.0%
Greenbackville	2	0	0:15:42	0	100.0%
Chincoteague	6	0	0:13:25	0	100.0%
Atlantic	10	0	0:13:57	1	100.0%
Saxis	0	0	0	0	#DIV/0!
Bloxom	6	0	0:15:33	1	100.0%
Parksley	16	0	0:17:34	2	100.0%
Tasley	12	0	0:18:18	1	100.0%
Onancock	9	1	0:21:21	0	88.9%
Melfa	8	0	0:12:32	1	100.0%
Wachapreague	0	0	0	0	#DIV/0!
Painter	3	0	0:13:43	0	100.0%
Tangier	0	0	0	0	#DIV/0!
<b>System Totals</b>	<b>85</b>	<b>1</b>	<b>0:21:21</b>	<b>7</b>	<b>98.8%</b>

EMS - Performance Measure Data						
Response District	Total Calls in District	Greater than 20 min. Response Time	Longest Response Time	Calls Handled by other agency	Station Benchmark Compliance %	Overall Station Reliability %
Greenbackville	23	2	0:24:08	14	91.3%	39.1%
Chincoteague	107	2	0:27:16	8	98.1%	92.5%
Saxis	6	0	0:11:39	0	100.0%	100.0%
Bloxom	54	0	0:17:03	2	100.0%	96.3%
Parksley	68	3	0:22:38	5	95.6%	92.6%
Onancock	81	1	0:22:37	5	98.8%	93.8%
Melfa	53	0	0:12:00	6	100.0%	88.7%
Wachapreague (Painter)	42	0	0:13:55	2	100.0%	95.2%
Oak Hall	96	3	0:21:46	15	96.9%	84.4%
Tangier	14	0	0:08:38	0	100.0%	100.0%
Community (Exmore)	12	1	0:20:24	3	91.7%	75.0%
<b>System Totals</b>	<b>556</b>	<b>12</b>	<b>0:27:16</b>	<b>60</b>	<b>97.8%</b>	<b>89.2%</b>

EMS Mutual Aid Data		Station Giving Aid														
Station Receiving Aid		Greenbackville	Chincoteague	Saxis	Bloxom	Parksley	Onancock	Melfa	Wachapreague/Painter	Oak Hall	Community (Exmore)	Northampton	Wallops	NORS	2nd Call	3rd Call
		Greenbackville									14					13
Chincoteague	3								5					1	3	4
Saxis																
Bloxom					1				1					1	1	
Parksley				3		1	1							4	1	
Onancock					2		3							1	4	
Melfa						4		2						3	3	
Wachapreague (Painter)							2							2		
Oak Hall		7		7	1									2	10	3
Community (Exmore)								3						3		
Northampton Co.																
Wallops																
<b>Totals</b>	<b>3</b>	<b>7</b>	<b>0</b>	<b>10</b>	<b>4</b>	<b>5</b>	<b>6</b>	<b>5</b>	<b>20</b>	<b>0</b>	<b>0</b>	<b>0</b>	<b>26</b>	<b>26</b>	<b>8</b>	

Transport Destination			
Hospital Destination by Unit	Riverside - Shore Memorial	PRMC / Tidal Health	Other
	Greenbackville	2	7
Chincoteague	33	38	1
Saxis	4	1	
Bloxom	35	5	
Parksley	74	2	
Onancock	57		
Melfa	33	1	
Wachapreague (Painter)	40		
Oak Hall	41	26	1
Wallops			
<b>Totals</b>	<b>319</b>	<b>80</b>	<b>3</b>

**Benchmark** = The Accomack County Board of Supervisors established a 20 minute standard for emergency response.

**NORS** = No Response by station or the call was handled by another station or agency.

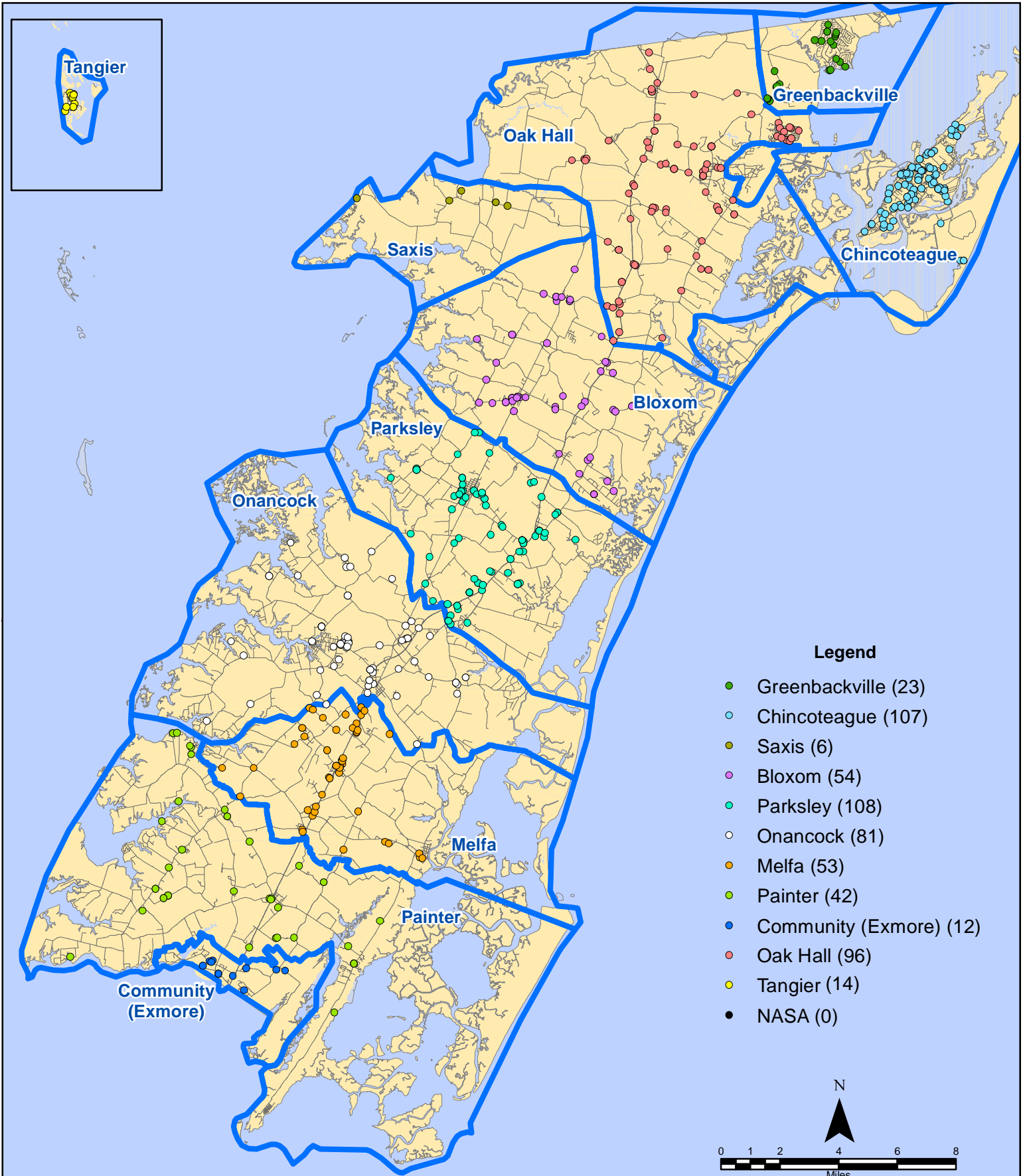
**2nd Call** = 2nd ambulance call received while first ambulance was on another call.

**3rd Call** = 3rd ambulance call received while first & second ambulances were on other calls.

\* This data excludes F1 Med (Medical Assist) calls in the Fire Data.

This information was prepared using data supplied by the Eastern Shore of Virginia 911 Center. This information is original incident data only and may not be representative of all units and/or stations who responded to an incident.

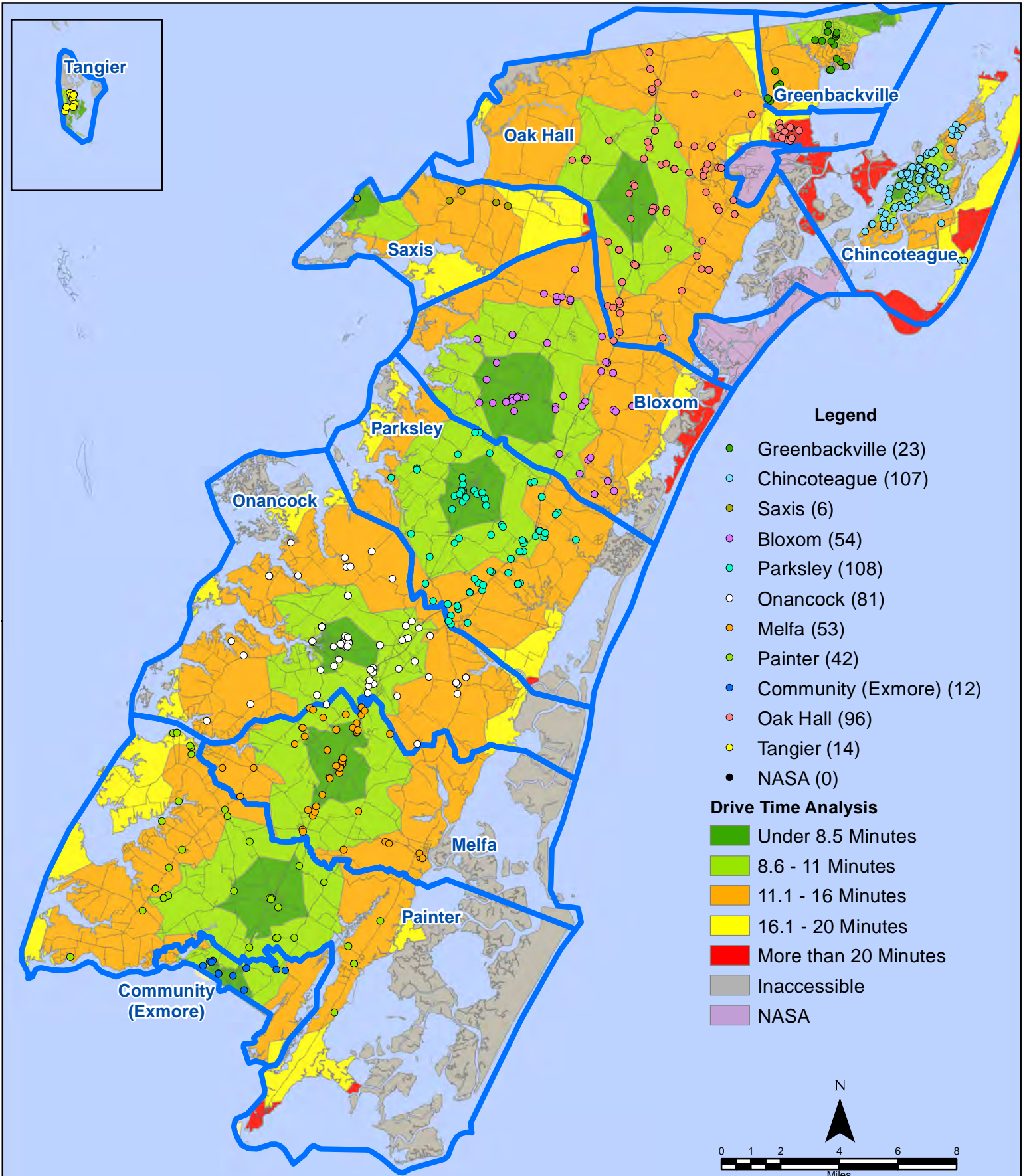
# August 2021 EMS Calls By District



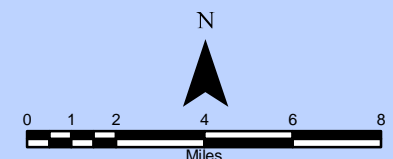
All points are plotted using X and Y coordinates provided by the ESVA 911 Center.  
Points may be plotted over one another when they are in close proximity.

Map Prepared by the Accomack County Department of Building, Planning & Economic Development using data from the ESVA 911 Center - September 13, 2021

# August 2021 EMS Calls By District

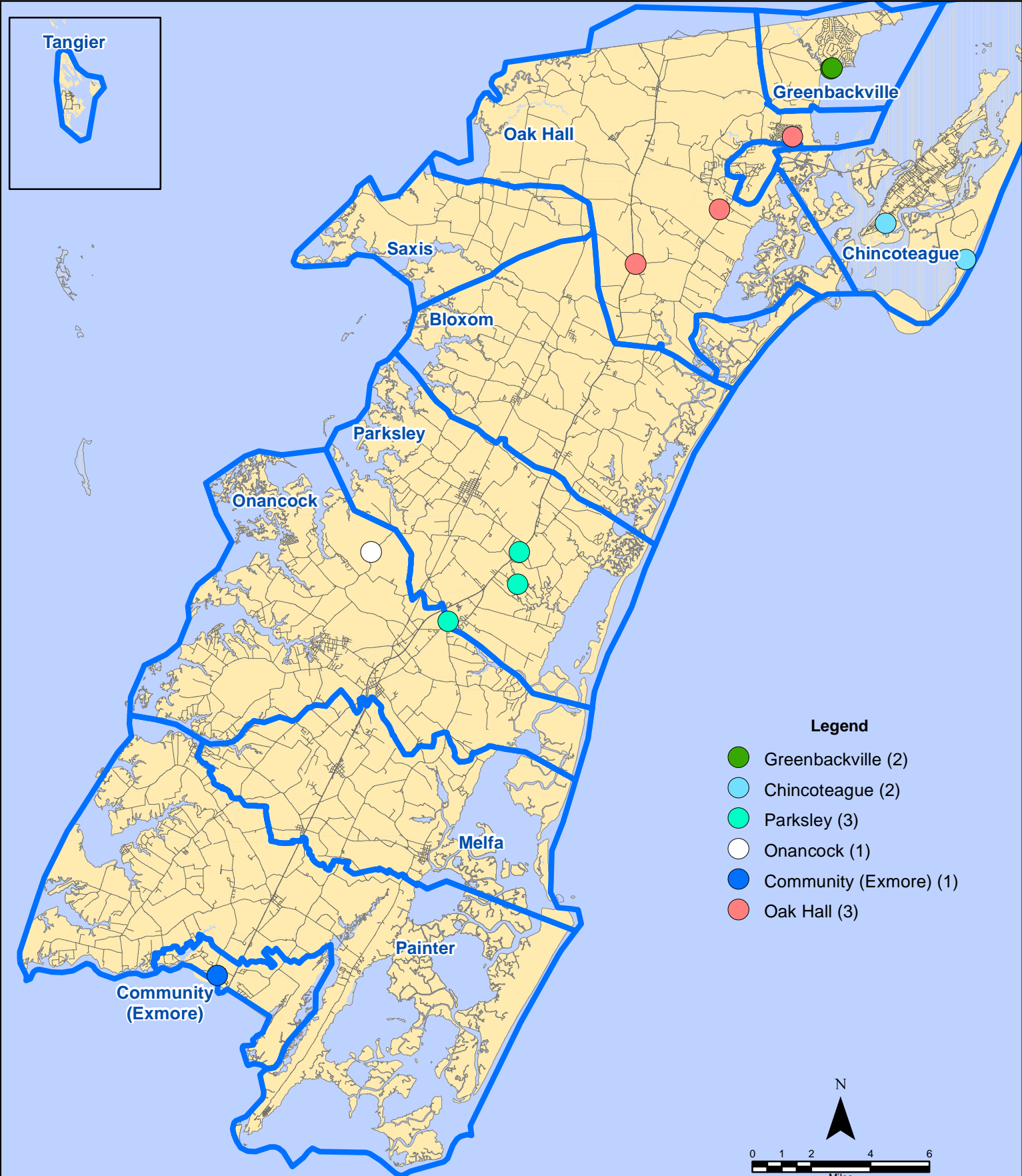


All points are plotted using X and Y coordinates provided by the ESVA 911 Center. Points may be plotted over one another when they are in close proximity.





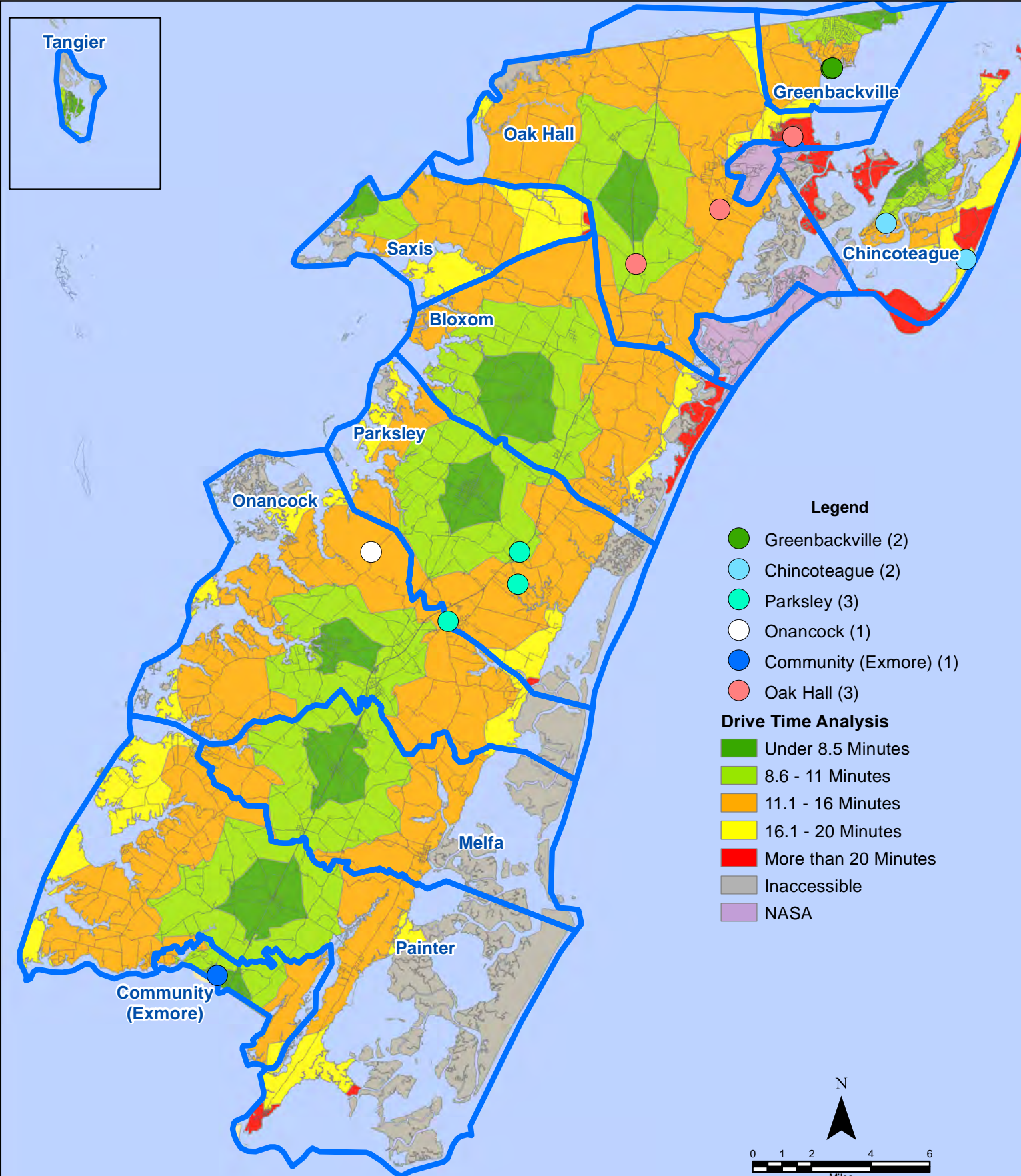
# August 2021 EMS Calls With Response Time Greater Than 20 Mins.



All points are plotted using X and Y coordinates provided by the ESVA 911 Center. Points may be plotted over one another when they are in close proximity.

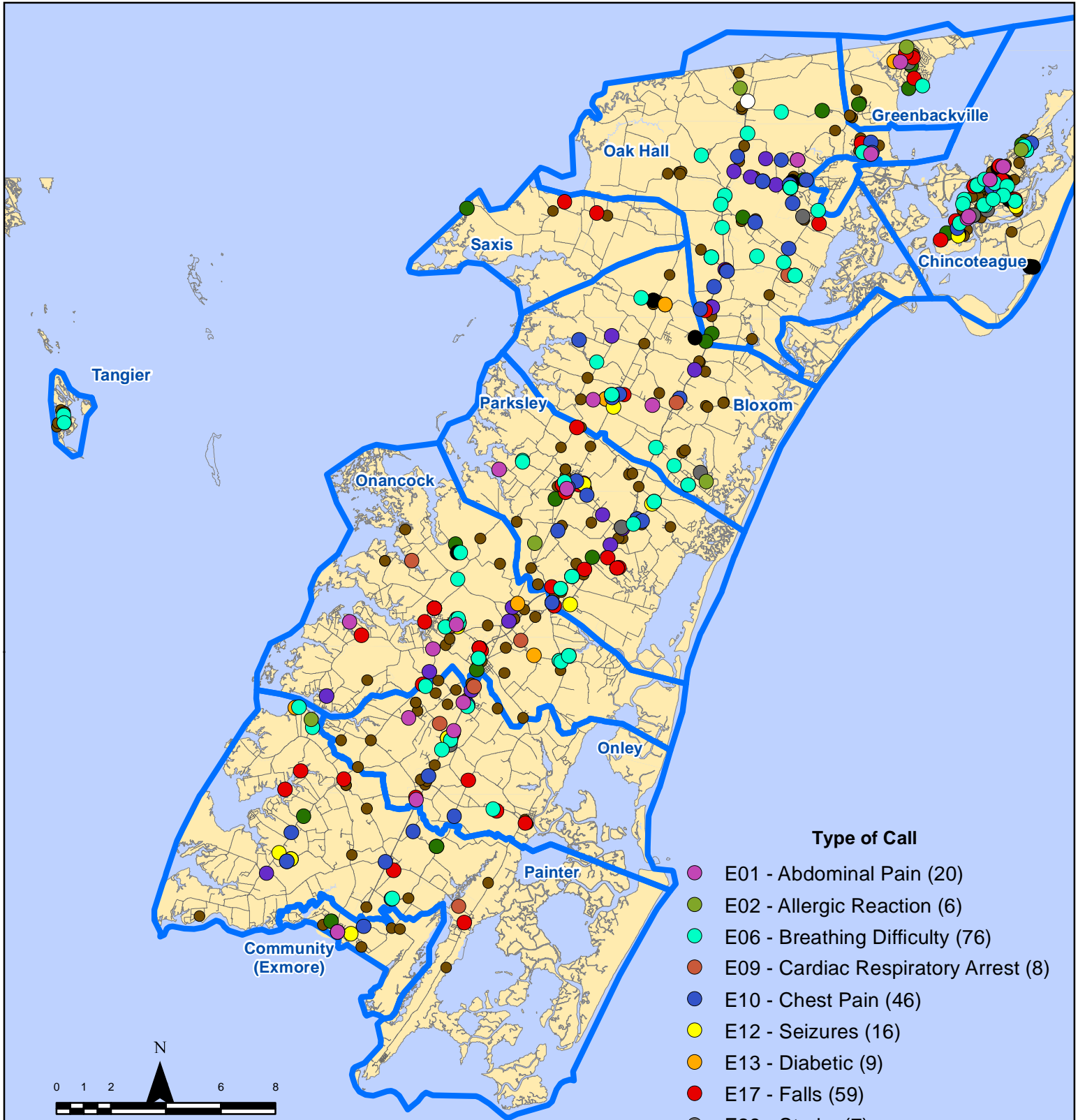


# August 2021 EMS Calls With Response Time Greater Than 20 Mins.



All points are plotted using X and Y coordinates provided by the ESVA 911 Center. Points may be plotted over one another when they are in close proximity.

# August 2021 EMS Calls By Type

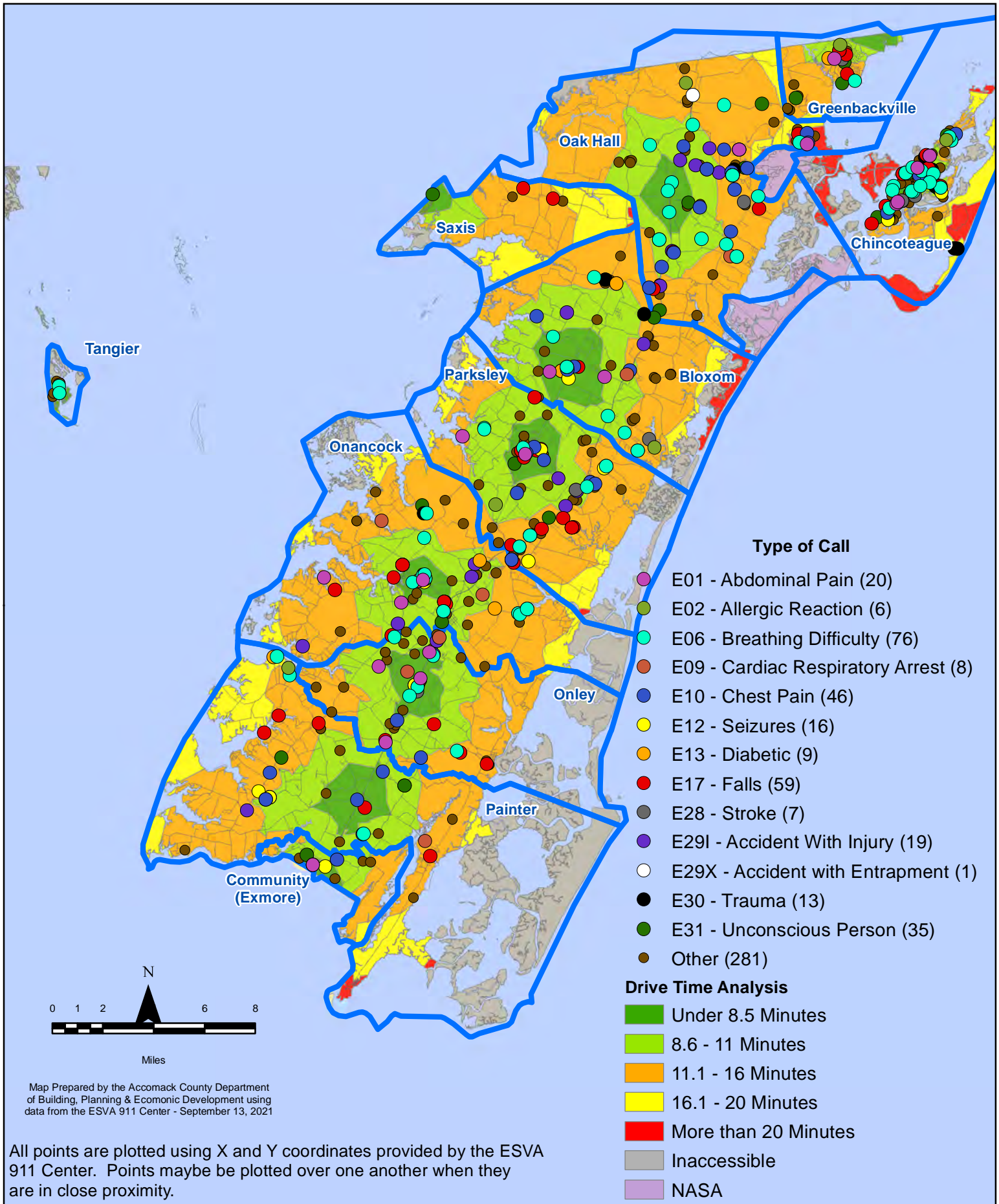


Map Prepared by the Accomack County Department of Building, Planning & Economic Development using data from the ESVA 911 Center - September 13, 2021

All points are plotted using X and Y coordinates provided by the ESVA 911 Center. Points may be plotted over one another when they are in close proximity.

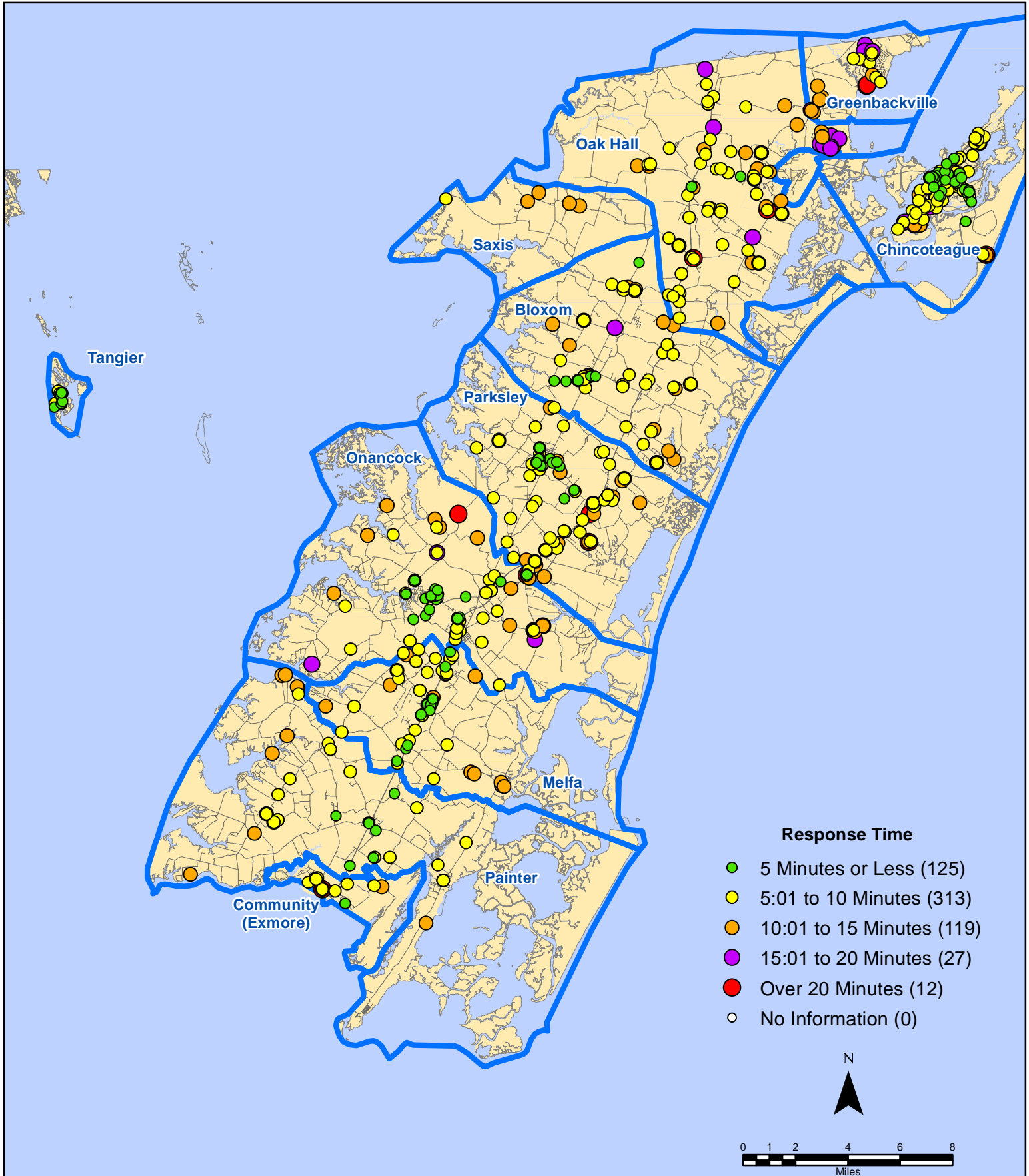


# August 2021 EMS Calls By Type





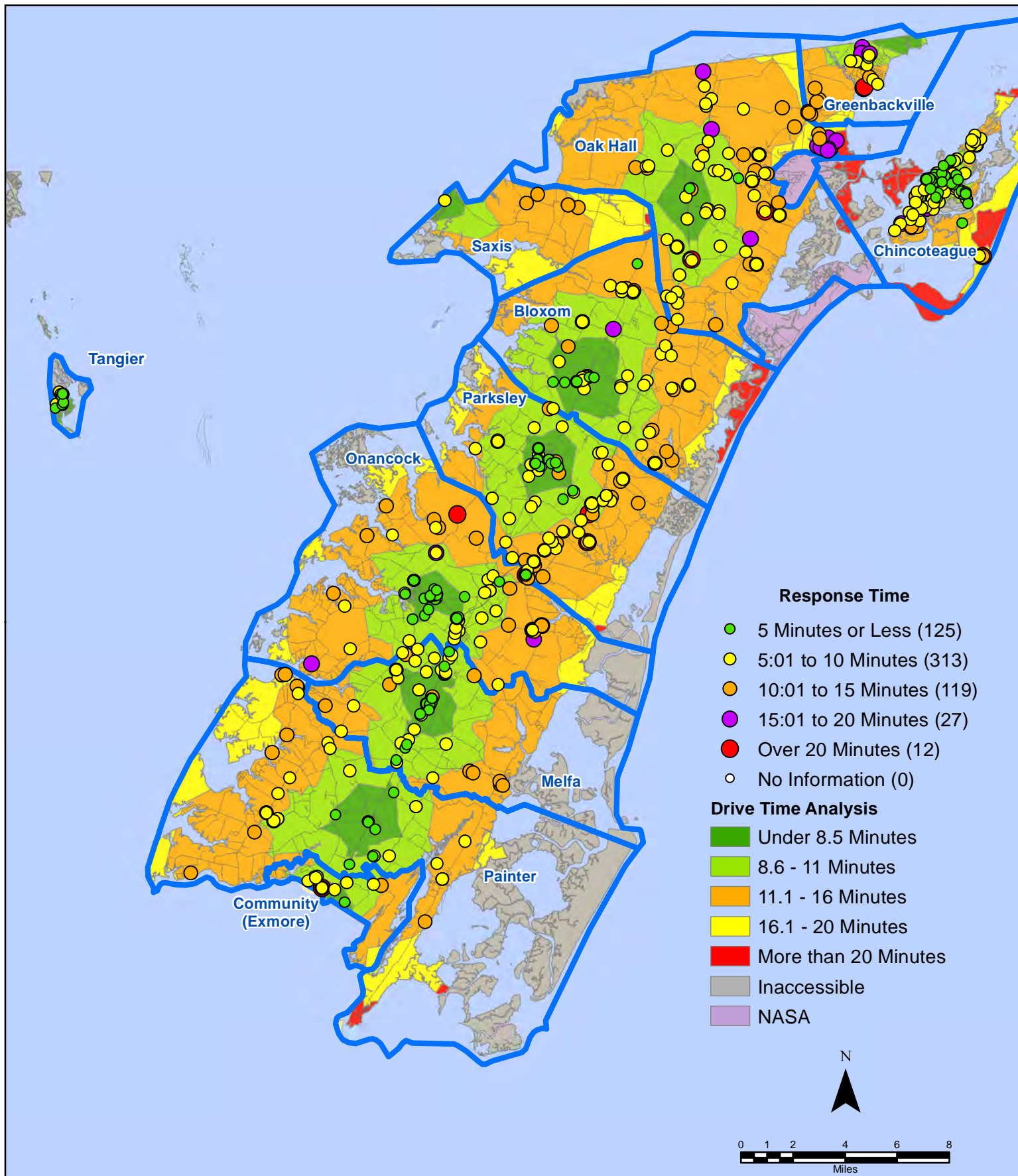
# August 2021 EMS Calls By Response Time



All points are plotted using X and Y coordinates provided by the ESVA 911 Center.  
Points may be plotted over one another when they are in close proximity.

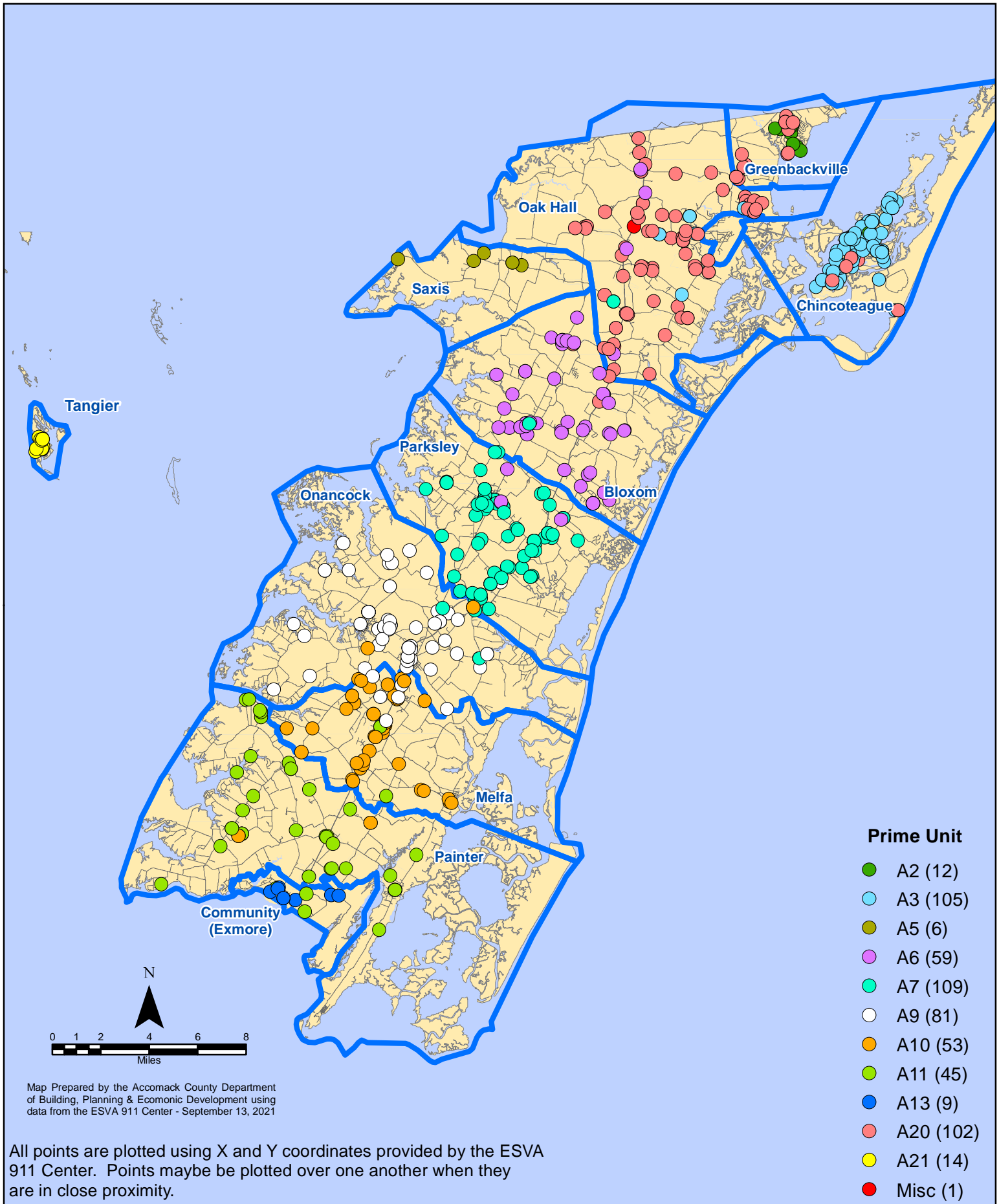
Map Prepared by the Accomack County Department of Building, Planning & Economic Development using data from the ESVA 911 Center - September 13, 2021

# August 2021 EMS Calls By Response Time



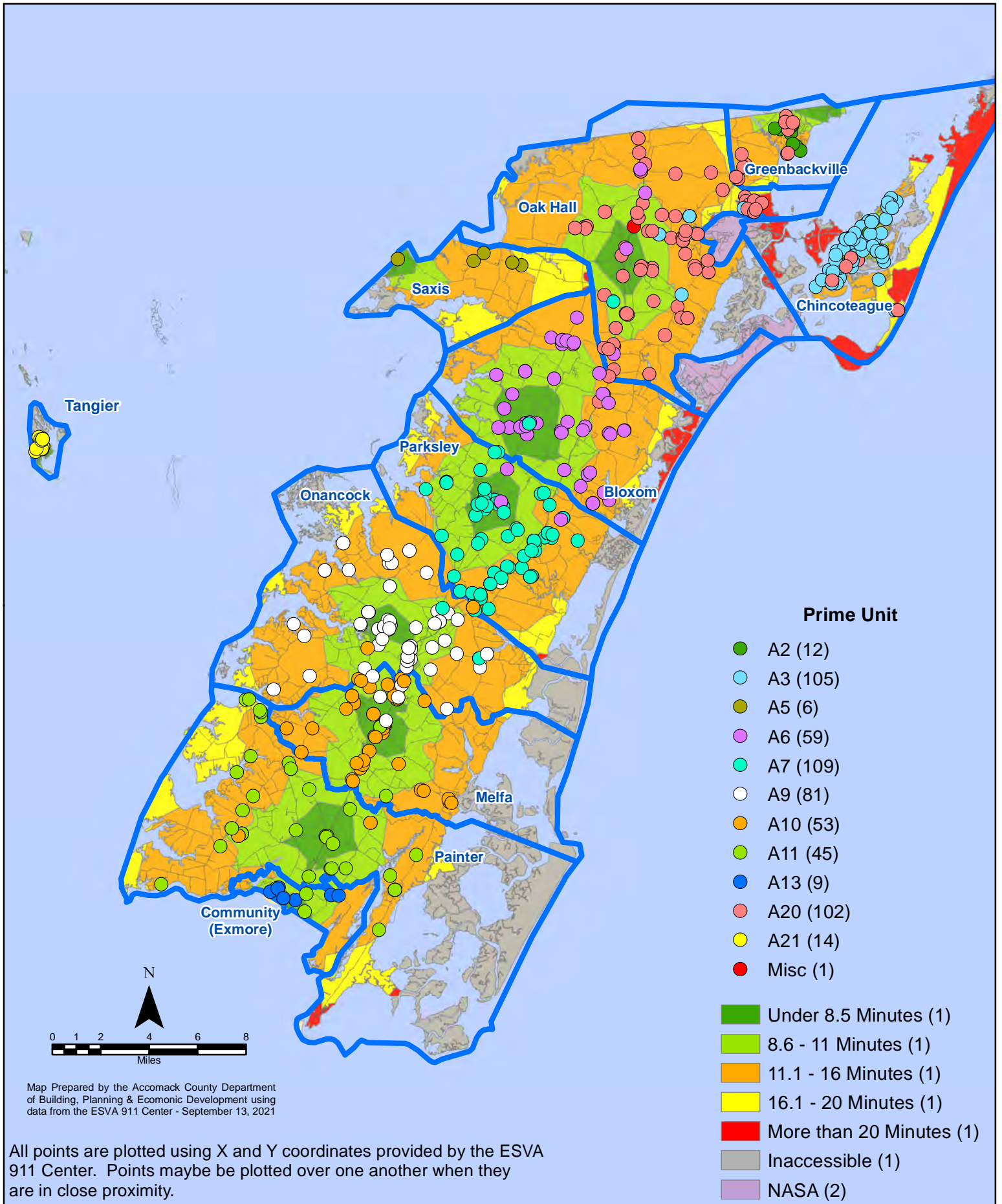
All points are plotted using X and Y coordinates provided by the ESVA 911 Center.  
Points may be plotted over one another when they are in close proximity.

# August 2021 EMS Calls By Prime Unit

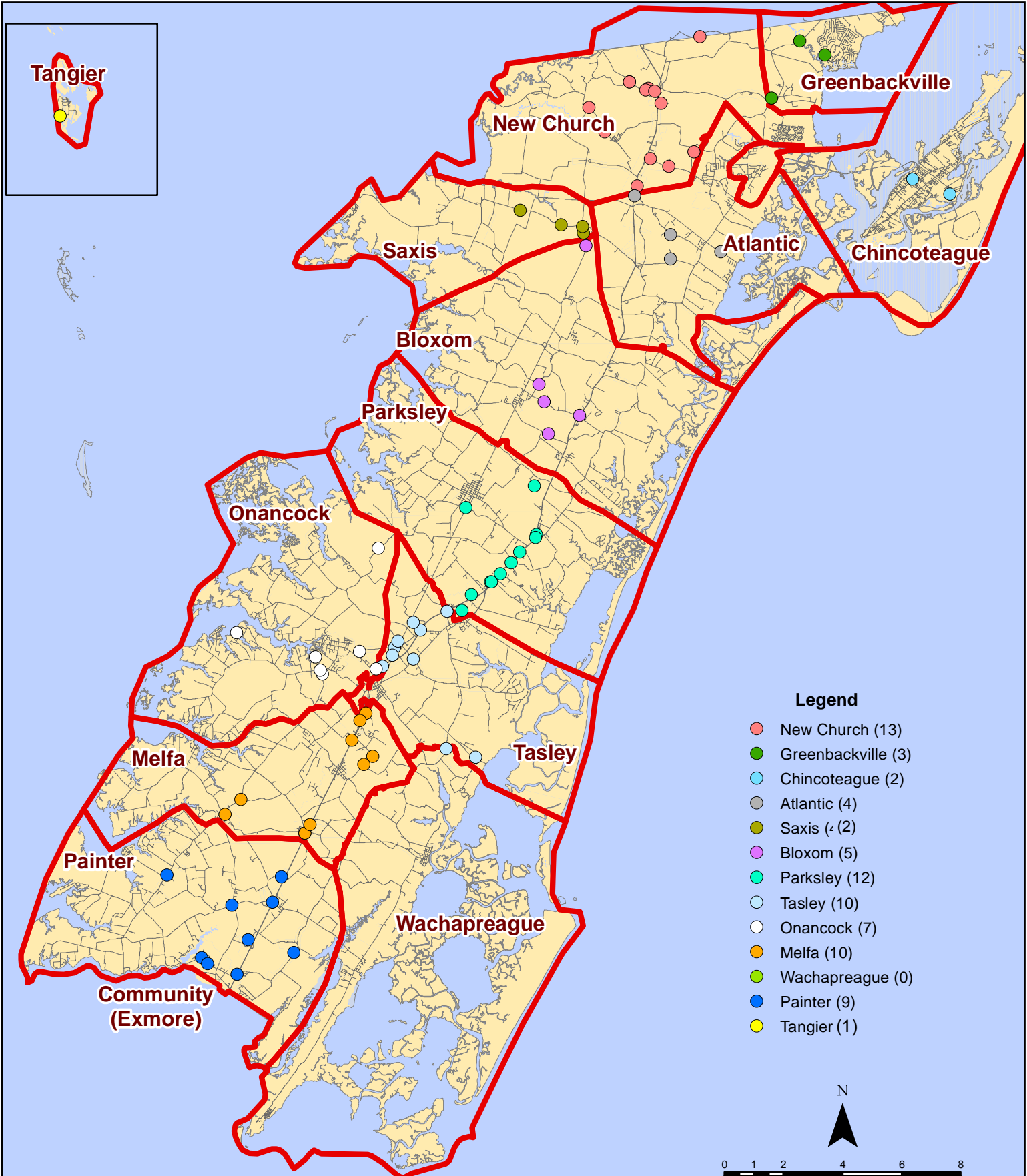




# August 2021 EMS Calls By Prime Unit



# August 2021 Fire Calls By District

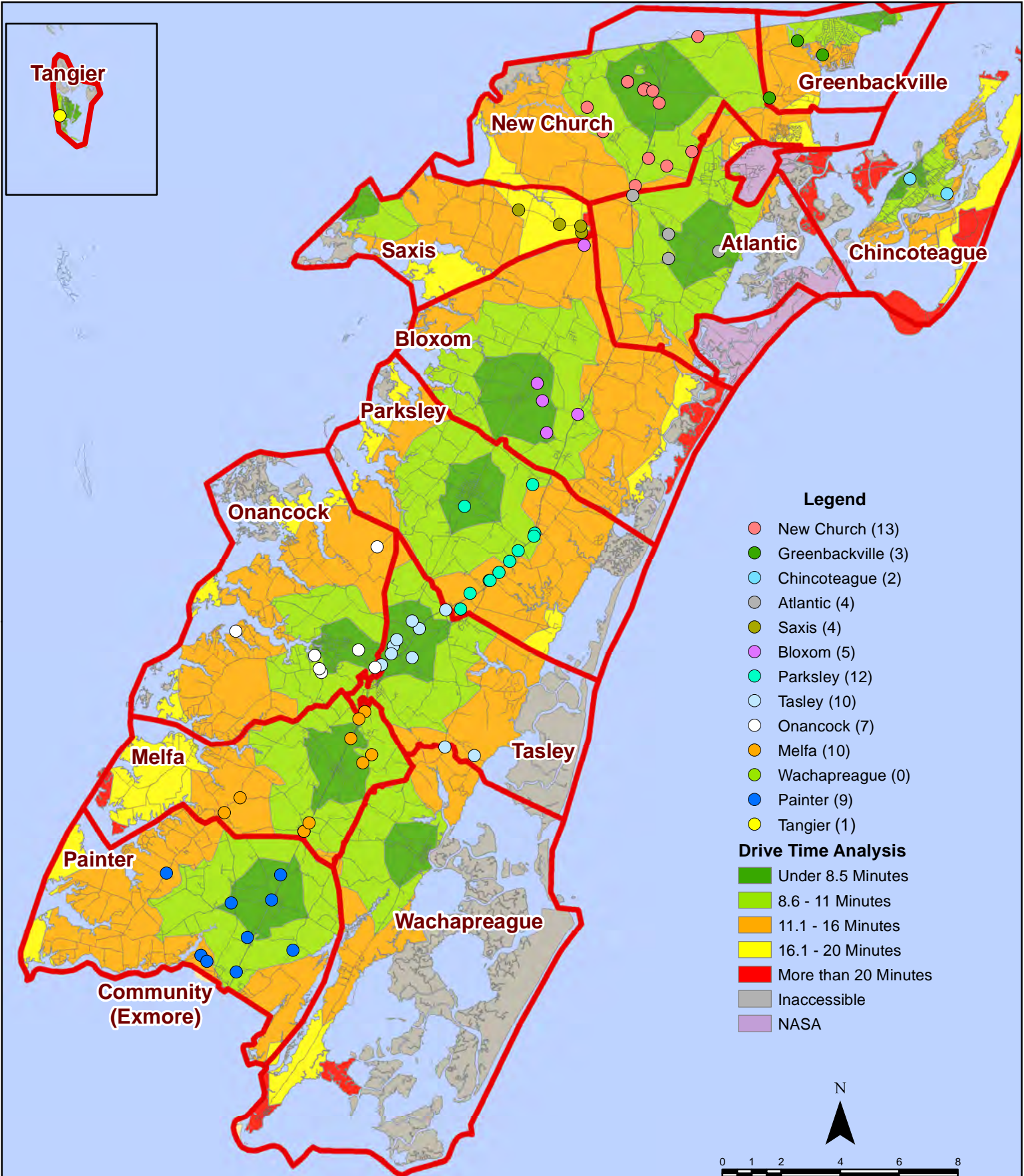


All points are plotted using X and Y coordinates provided by the ESVA 911 Center. Points may be plotted over one another when they are in close proximity.

Map Prepared by the Accomack County Department of Building, Planning & Economic Development using data from the ESVA 911 Center - September 13, 2021



# August 2021 Fire Calls By District

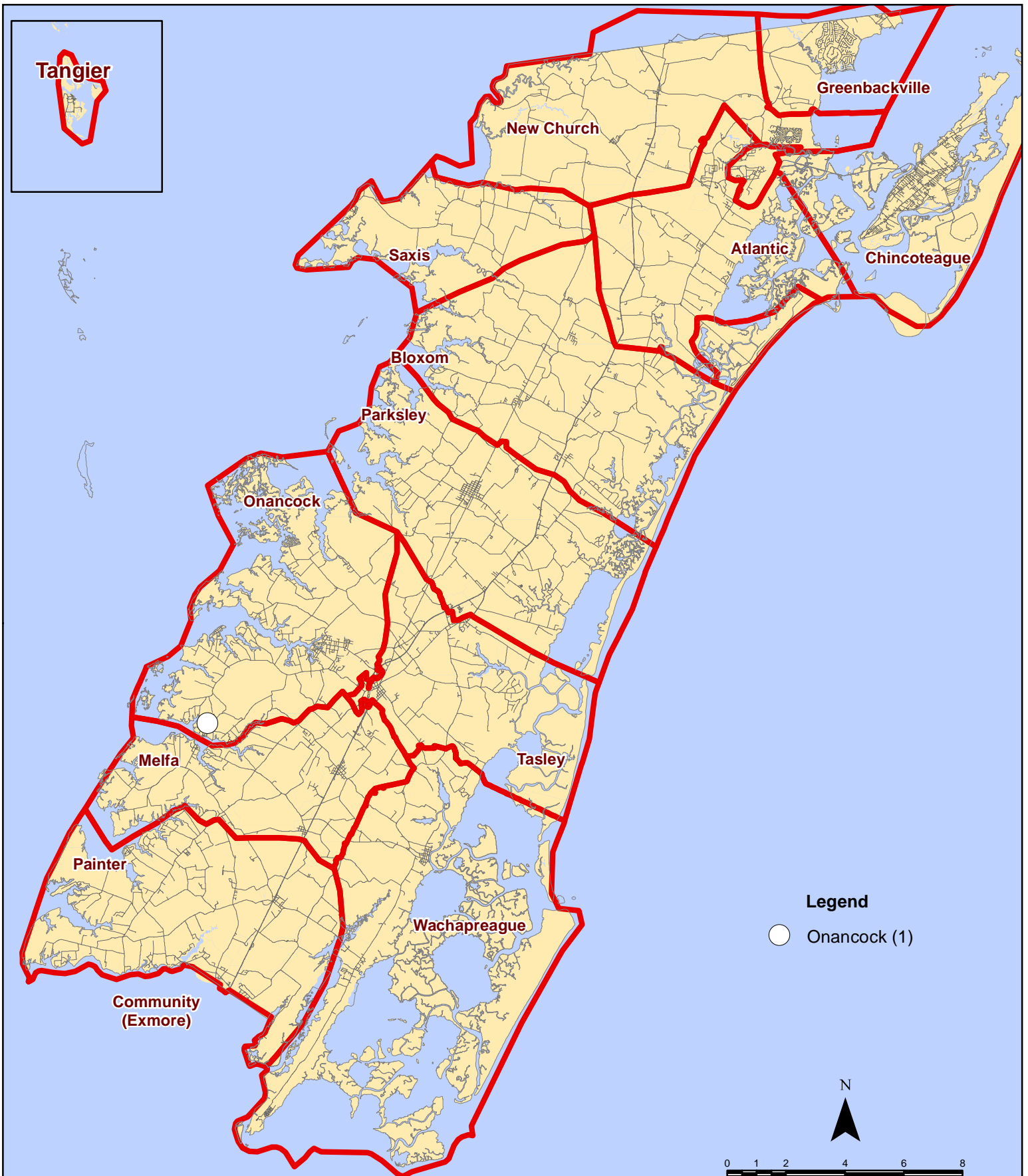


All points are plotted using X and Y coordinates provided by the ESVA 911 Center. Points may be plotted over one another when they are in close proximity.

Map Prepared by the Accomack County Department of Building, Planning & Economic Development using data from the ESVA 911 Center - September 13, 2021



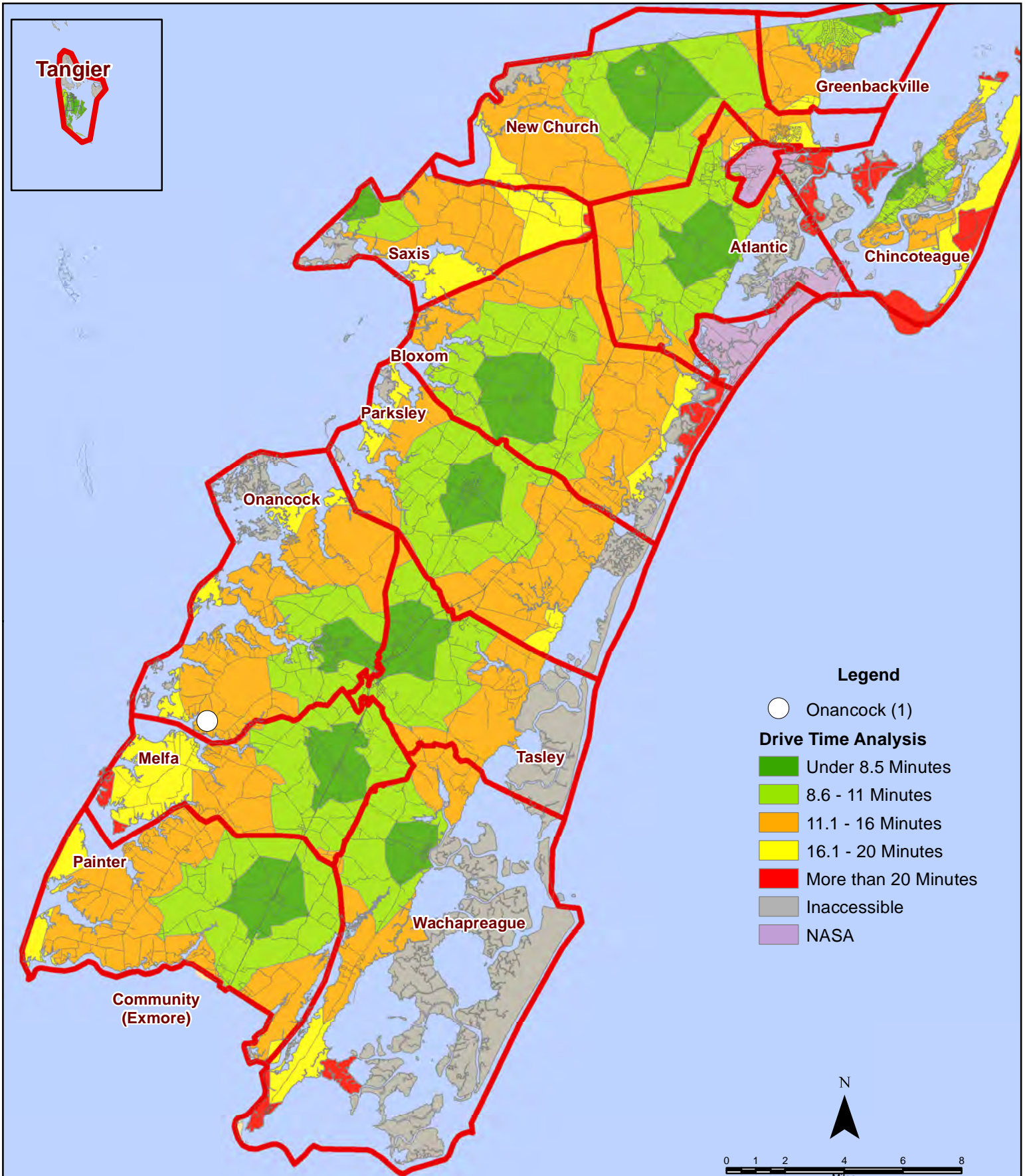
# August 2021 Fire Calls With Response Time Greater Than 20 Mins.



All points are plotted using X and Y coordinates provided by the ESVA 911 Center. Points may be plotted over one another when they are in close proximity.

Map Prepared by the Accomack County Department of Building, Planning & Economic Development using data from the ESVA 911 Center - September 13, 2021

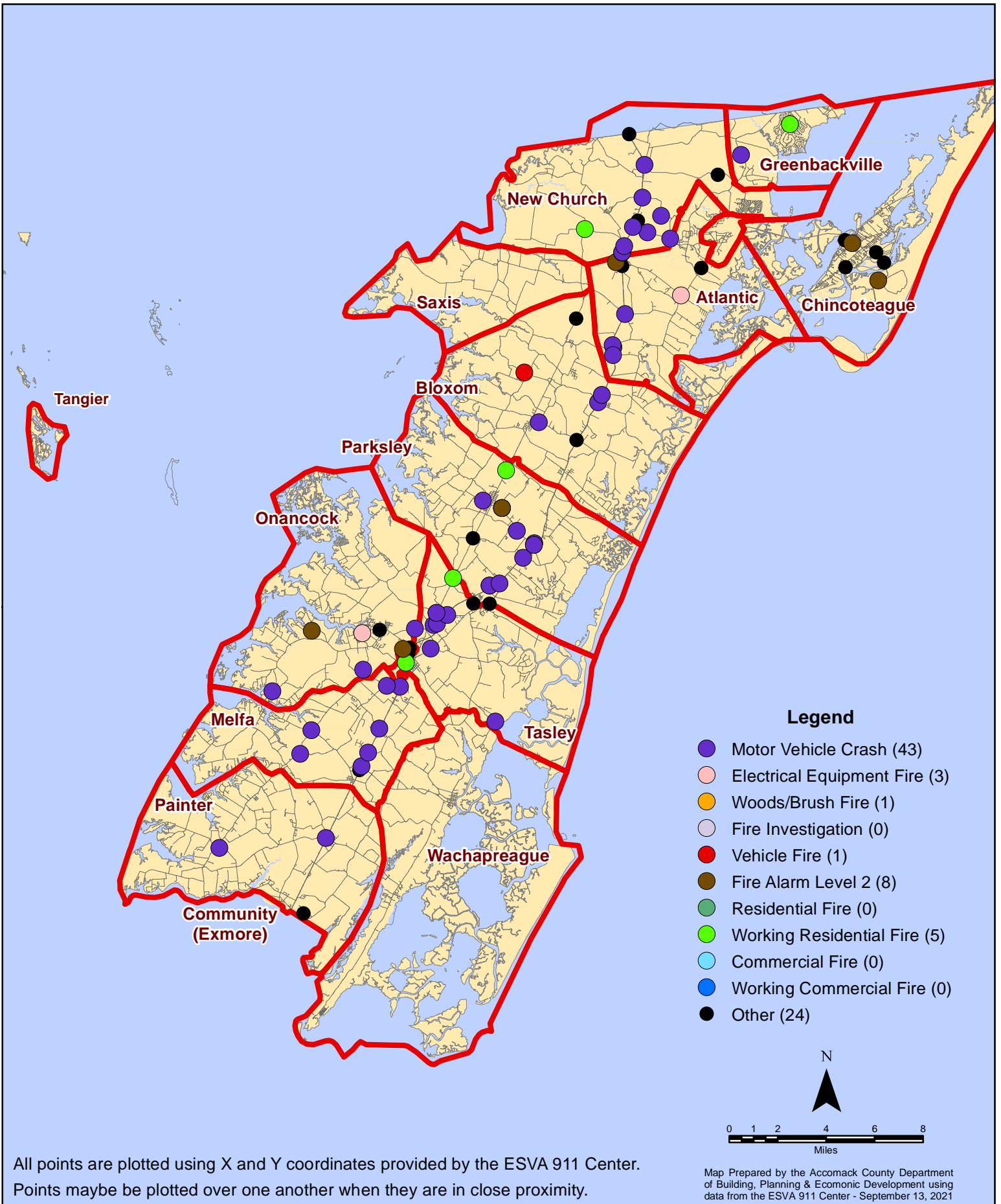
# August 2021 Fire Calls With Response Time Greater Than 20 Mins.



All points are plotted using X and Y coordinates provided by the ESVA 911 Center. Points maybe be plotted over one another when they are in close proximity.

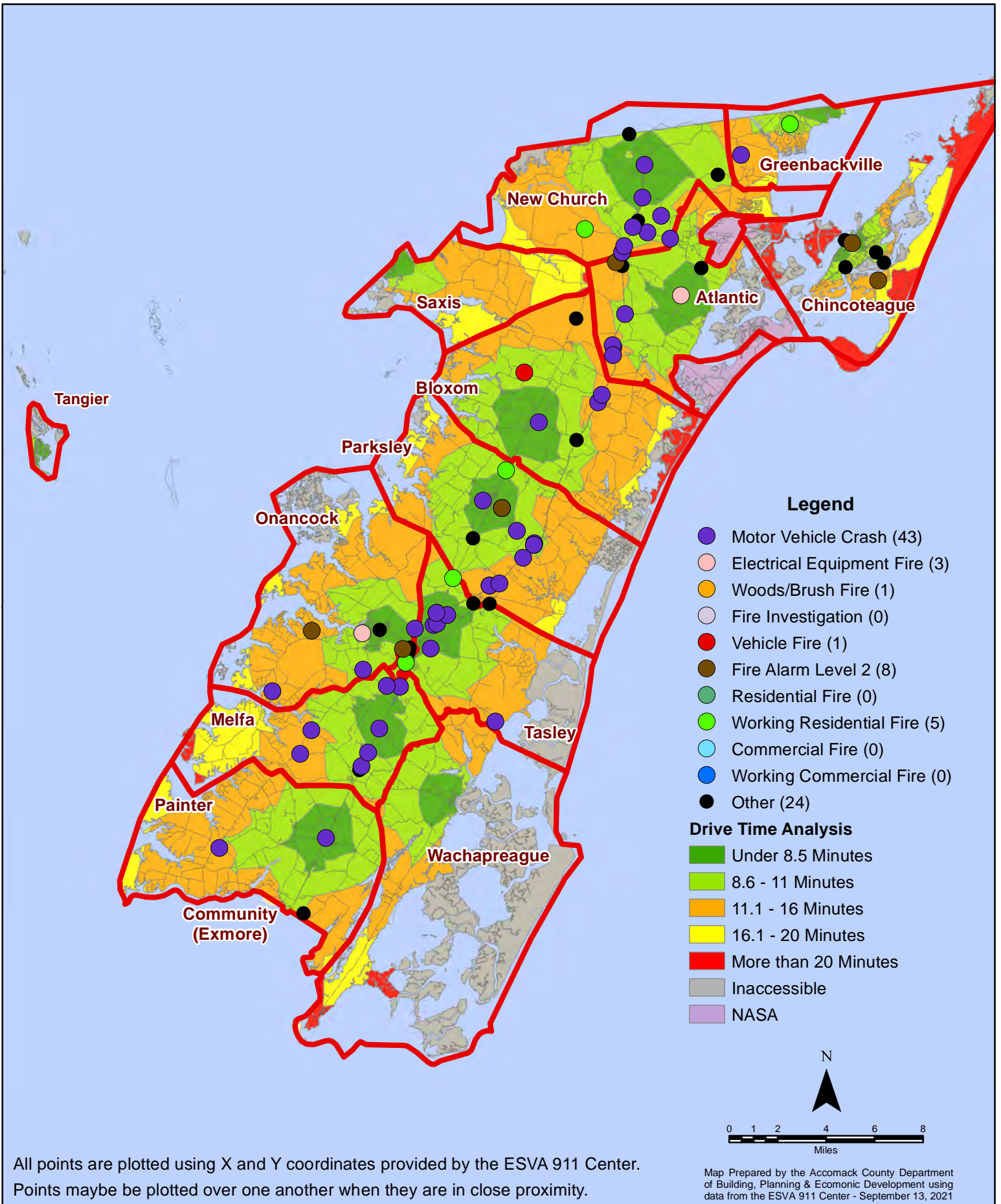


# August 2021 Fire Calls By Type





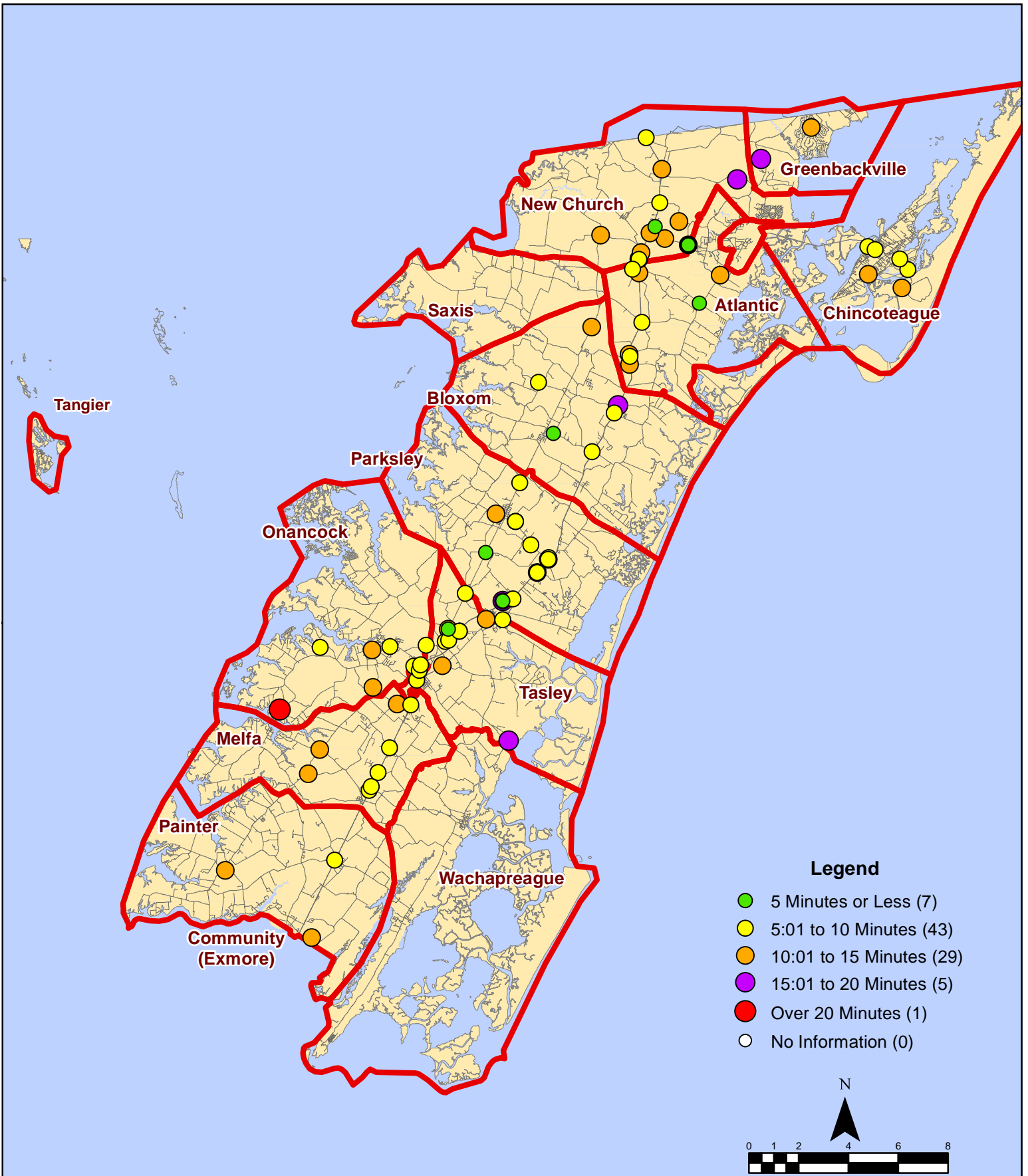
# August 2021 Fire Calls By Type



All points are plotted using X and Y coordinates provided by the ESVA 911 Center. Points may be plotted over one another when they are in close proximity.

Map Prepared by the Accomack County Department of Building, Planning & Economic Development using data from the ESVA 911 Center - September 13, 2021

# August 2021 Fire Calls By Response Time

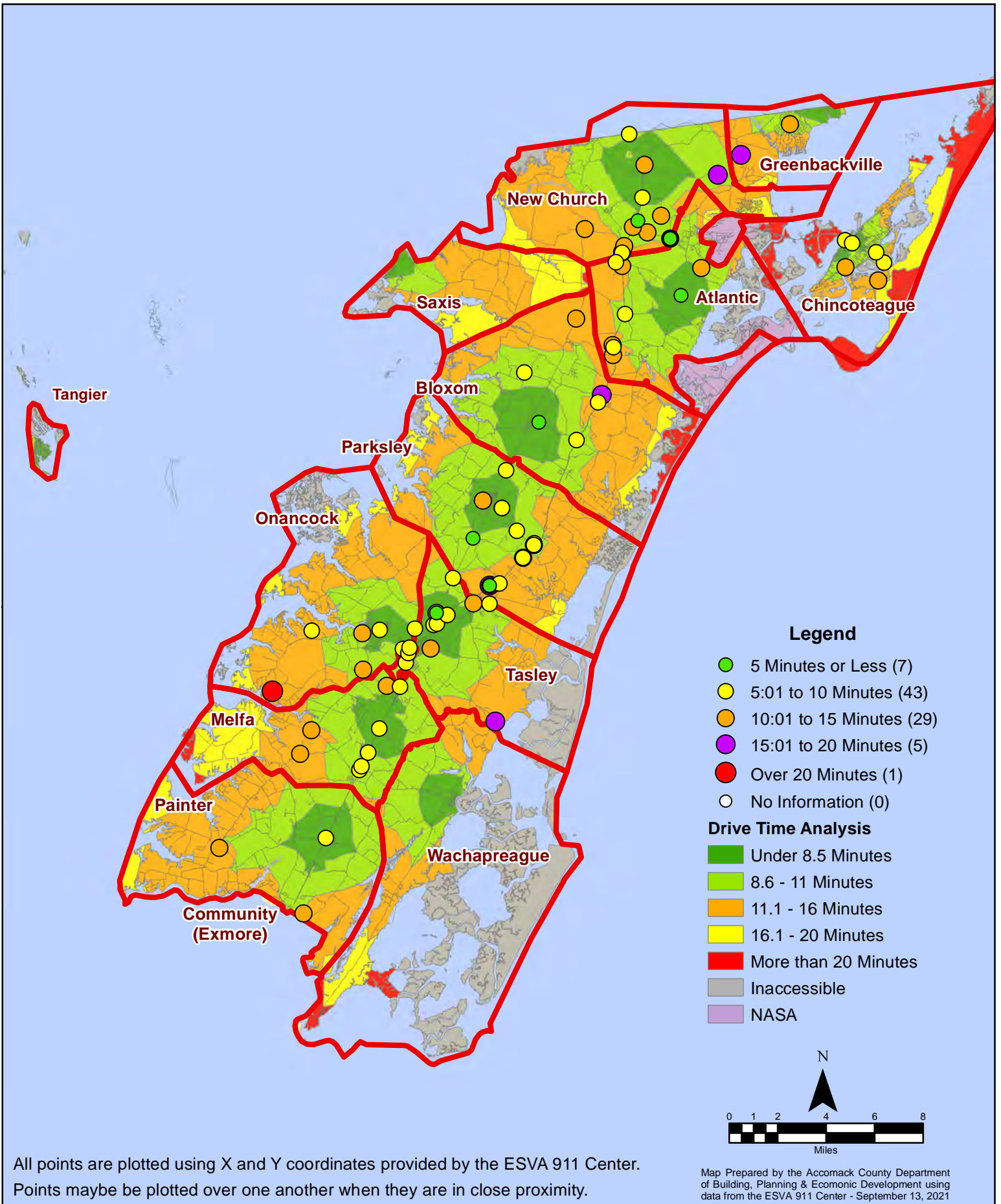


All points are plotted using X and Y coordinates provided by the ESVA 911 Center. Points may be plotted over one another when they are in close proximity.

Map Prepared by the Accomack County Department of Building, Planning & Economic Development using data from the ESVA 911 Center - September 13, 2021



# August 2021 Fire Calls By Response Time



All points are plotted using X and Y coordinates provided by the ESVA 911 Center. Points may be plotted over one another when they are in close proximity.

Map Prepared by the Accomack County Department of Building, Planning & Economic Development using data from the ESVA 911 Center - September 13, 2021