

# November 2021 (revised 12/8/21)

<b>Fire - Performance Measure Data *</b>					
Response District	Total Calls in District	Greater than 20 min. Response Time	Longest Response Time	Calls Handled by other agency	Overall Station Benchmark %
New Church	10	1	0:23:22	0	90.0%
Greenbackville	0	0	0	0	#DIV/0!
Chincoteague	4	0	0:11:29	0	100.0%
Atlantic	12	0	0:14:59	1	100.0%
Saxis	4	0	0:14:54	1	100.0%
Bloxom	13	0	0:16:38	0	100.0%
Parksley	19	0	0:13:02	2	100.0%
Tasley	12	0	0:12:41	2	100.0%
Onancock	10	0	0:18:45	1	100.0%
Melfa	6	0	0:12:10	0	100.0%
Wachapreague	2	0	0:10:49	0	100.0%
Painter	7	0	0:12:43	0	100.0%
Tangier	1	0	0:04:24	0	100.0%
<b>System Totals</b>	<b>100</b>	<b>1</b>	<b>0:18:45</b>	<b>7</b>	<b>99.0%</b>

<b>EMS - Performance Measure Data</b>						
Response District	Total Calls in District	Greater than 20 min. Response Time	Longest Response Time	Calls Handled by other agency	Station Benchmark Compliance %	Overall Station Reliability %
Greenbackville	24	3	0:21:32	15	87.5%	37.5%
Chincoteague	77	0	0:14:52	1	100.0%	98.7%
Saxis	16	0	0:19:15	7	100.0%	56.3%
Bloxom	55	1	0:20:20	2	98.2%	96.4%
Parksley	104	0	0:17:30	2	100.0%	98.1%
Onancock	71	0	0:14:04	1	100.0%	98.6%
Melfa	47	0	0:20:00	9	100.0%	80.9%
Wachapreague (Painter)	39	1	0:22:03	1	97.4%	97.4%
Oak Hall	73	1	0:23:00	7	98.6%	90.4%
Tangier	16	0	0:16:39	0	100.0%	100.0%
Community (Exmore)	5	0	0:14:48	2	100.0%	60.0%
<b>System Totals</b>	<b>527</b>	<b>6</b>	<b>0:23:00</b>	<b>47</b>	<b>98.9%</b>	<b>91.1%</b>

<b>EMS Mutual Aid Data</b>												
	Station Giving Aid											
	Greenbackville	Chincoteague	Saxis	Bloxom	Parksley	Onancock	Melfa	Wachapreague/Painter	Oak Hall	Community (Exmore)	Northampton	Wallops
Greenbackville	15											
Chincoteague		1										
Saxis			6									
Bloxom				1								
Parksley				2								
Onancock					1							
Melfa						5						
Wachapreague (Painter)							4					
Oak Hall								1				
Community (Exmore)									2			
Northampton Co.										1		
Wallops											1	
<b>Totals</b>	<b>1</b>	<b>3</b>	<b>0</b>	<b>5</b>	<b>2</b>	<b>6</b>	<b>2</b>	<b>6</b>	<b>22</b>	<b>0</b>	<b>0</b>	<b>0</b>

<b>Transport Destination</b>			
Hospital Destination by Unit	Riverside - Shore Memorial	PRMC / Tidal Health	Other
	Greenbackville	1	5
Chincoteague	20	14	2
Saxis	3	4	
Bloxom	30	4	2
Parksley	69		
Onancock	49		
Melfa	30		
Wachapreague (Painter)	36		
Oak Hall	42	26	3
Wallops			
<b>Totals</b>	<b>280</b>	<b>53</b>	<b>7</b>

**Benchmark** = The Accomack County Board of Supervisors established a 20 minute standard for emergency response.

**NORS** = No Response by station or the call was handled by another station or agency.

**2nd Call** = 2nd ambulance call received while first ambulance was on another call.

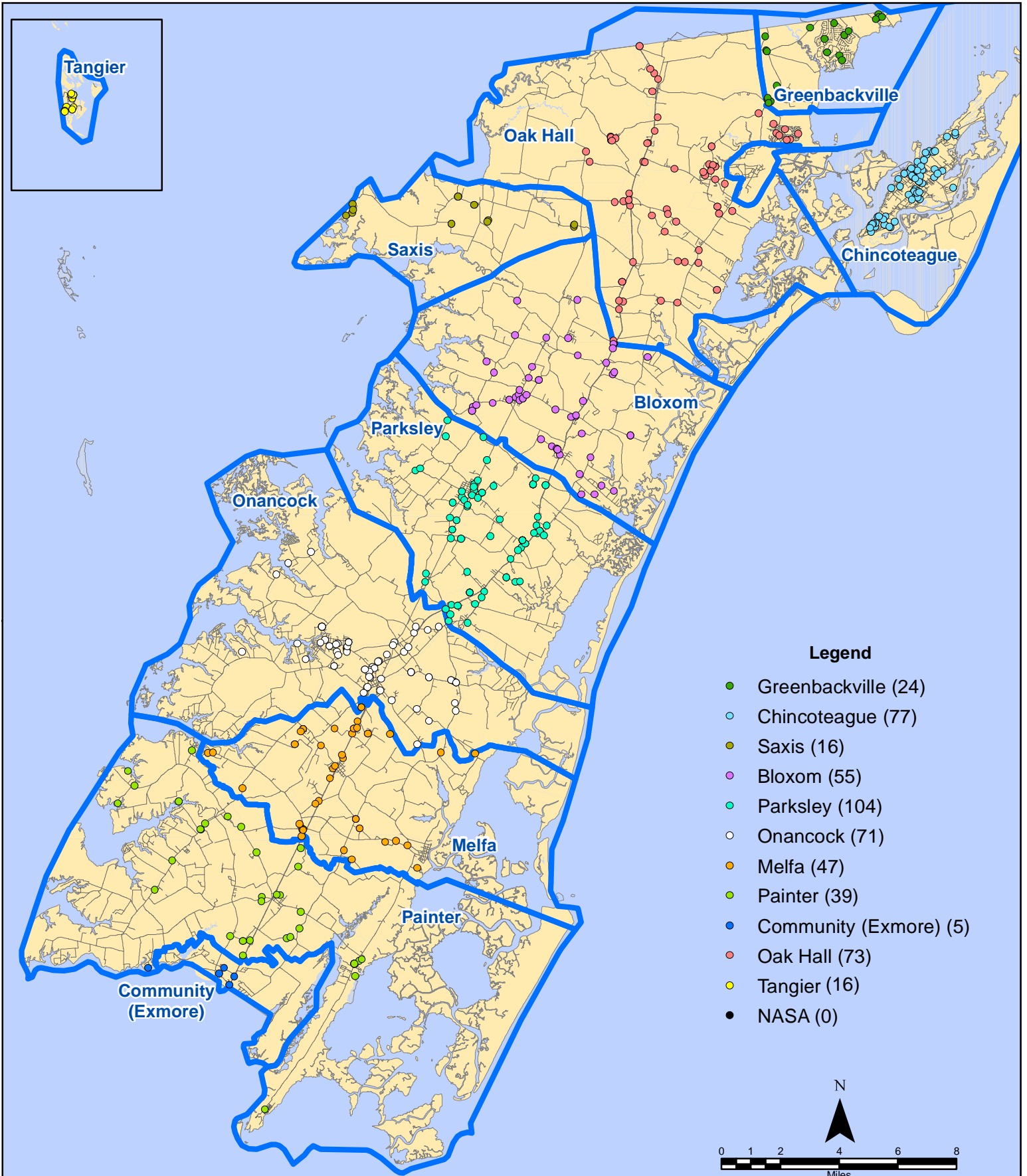
**3rd Call** = 3rd ambulance call received while first & second ambulances were on other calls.

\* This data excludes F1 Med (Medical Assist) calls in the Fire Data.

This information was prepared using data supplied by the Eastern Shore of Virginia 911 Center. This information is original incident data only and may not be representative of all units and/or stations who responded to an incident.

Station Receiving Aid

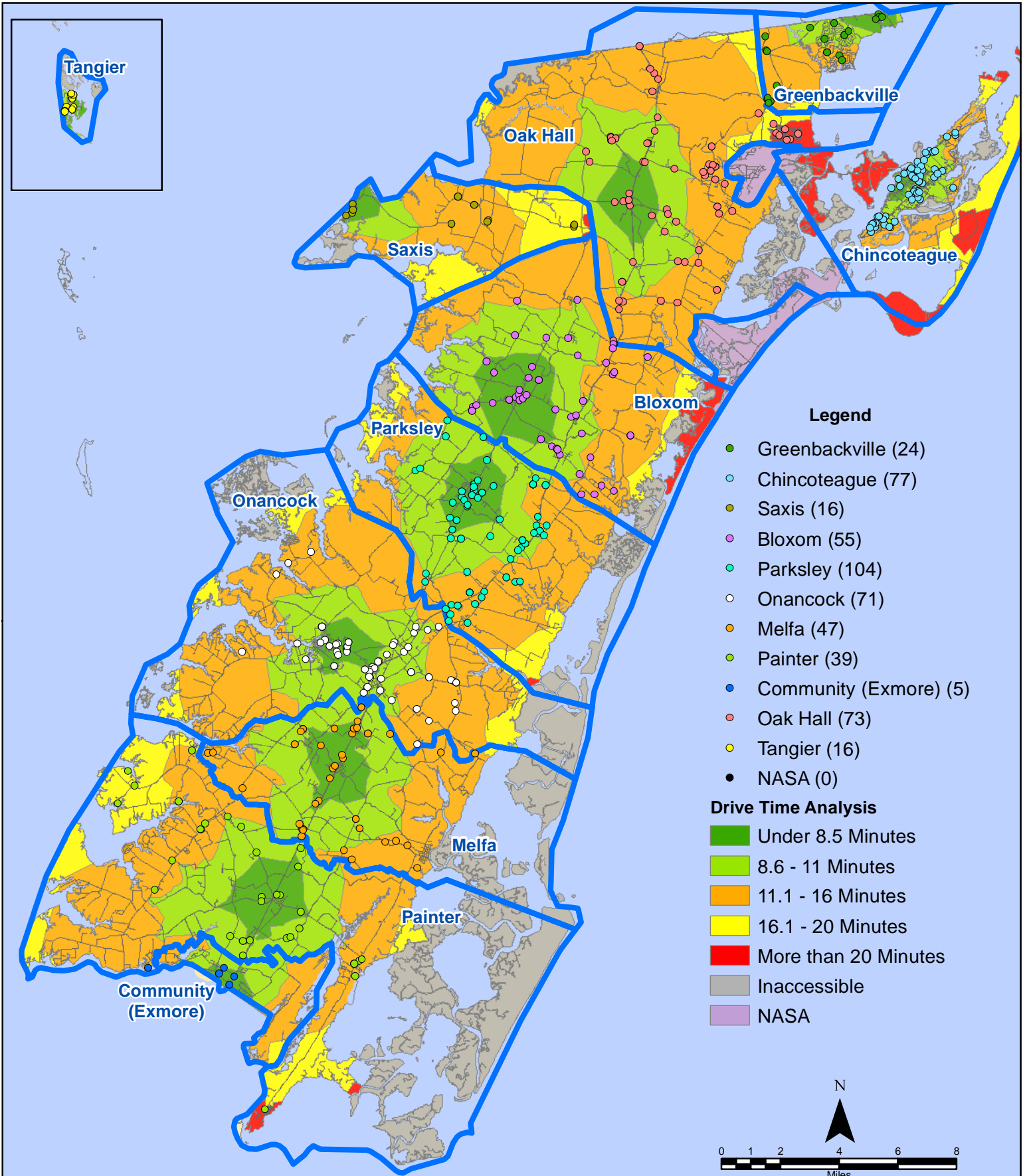
# November 2021 EMS Calls By District



All points are plotted using X and Y coordinates provided by the ESVA 911 Center.  
Points may be plotted over one another when they are in close proximity.

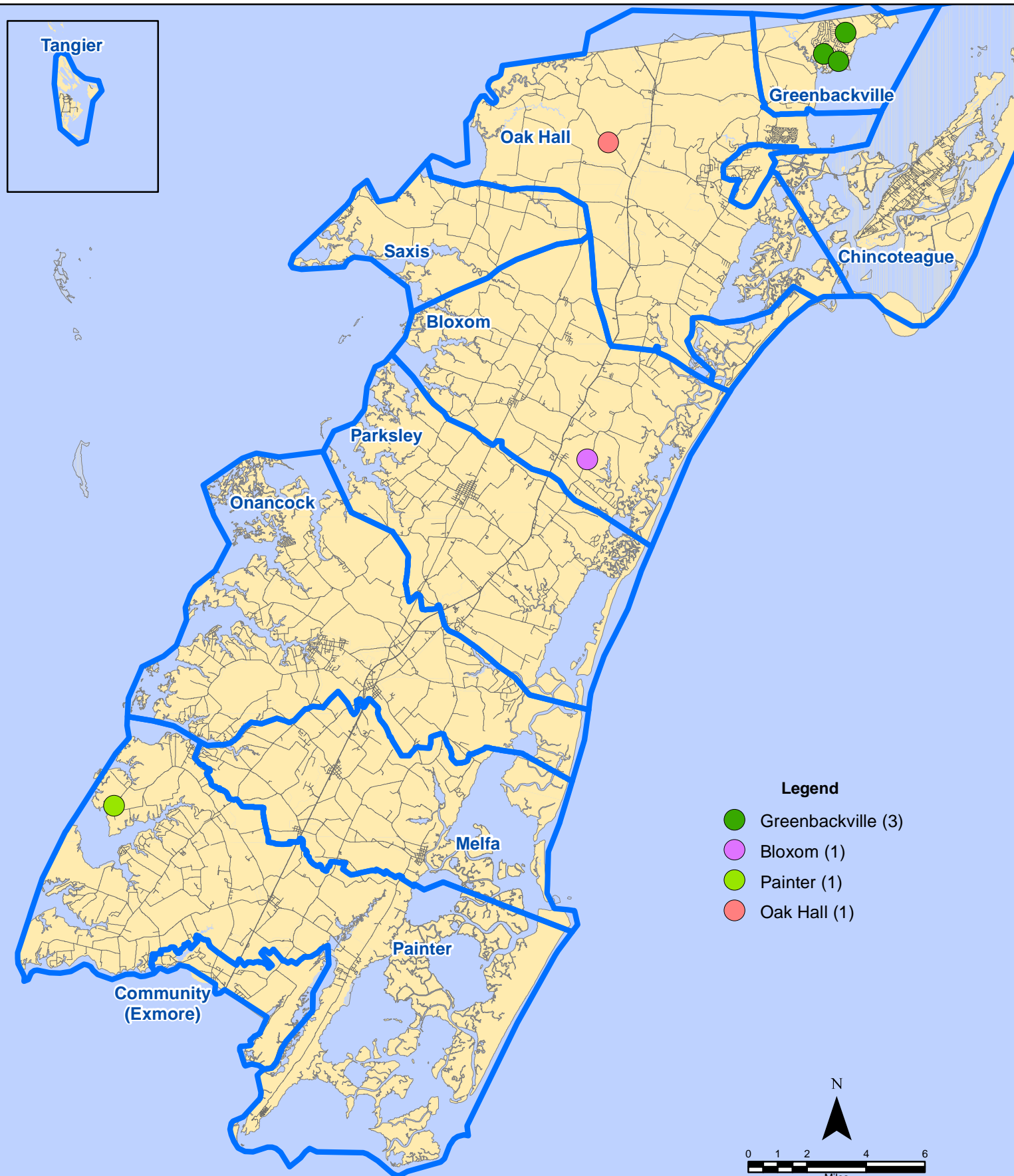
Map Prepared by the Accomack County Department of Building, Planning & Economic Development using data from the ESVA 911 Center - December 8, 2021

# November 2021 EMS Calls By District



All points are plotted using X and Y coordinates provided by the ESVA 911 Center. Points may be plotted over one another when they are in close proximity.

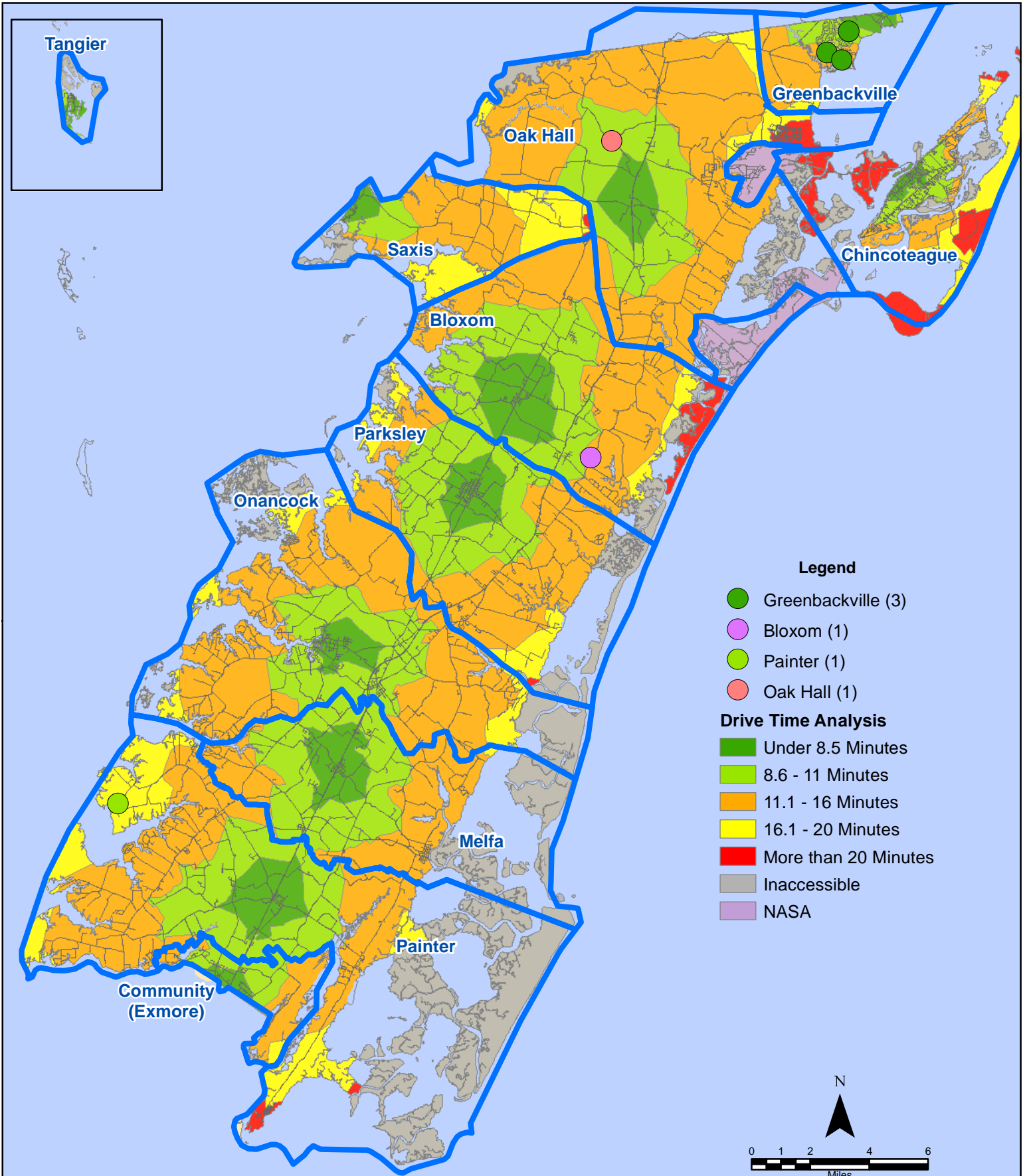
# November 2021 EMS Calls With Response Time Greater Than 20 Mins.



All points are plotted using X and Y coordinates provided by the ESVA 911 Center. Points may be plotted over one another when they are in close proximity.

Map Prepared by the Accomack County Department of Building, Planning & Economic Development using data from the ESVA 911 Center - December 8, 2021

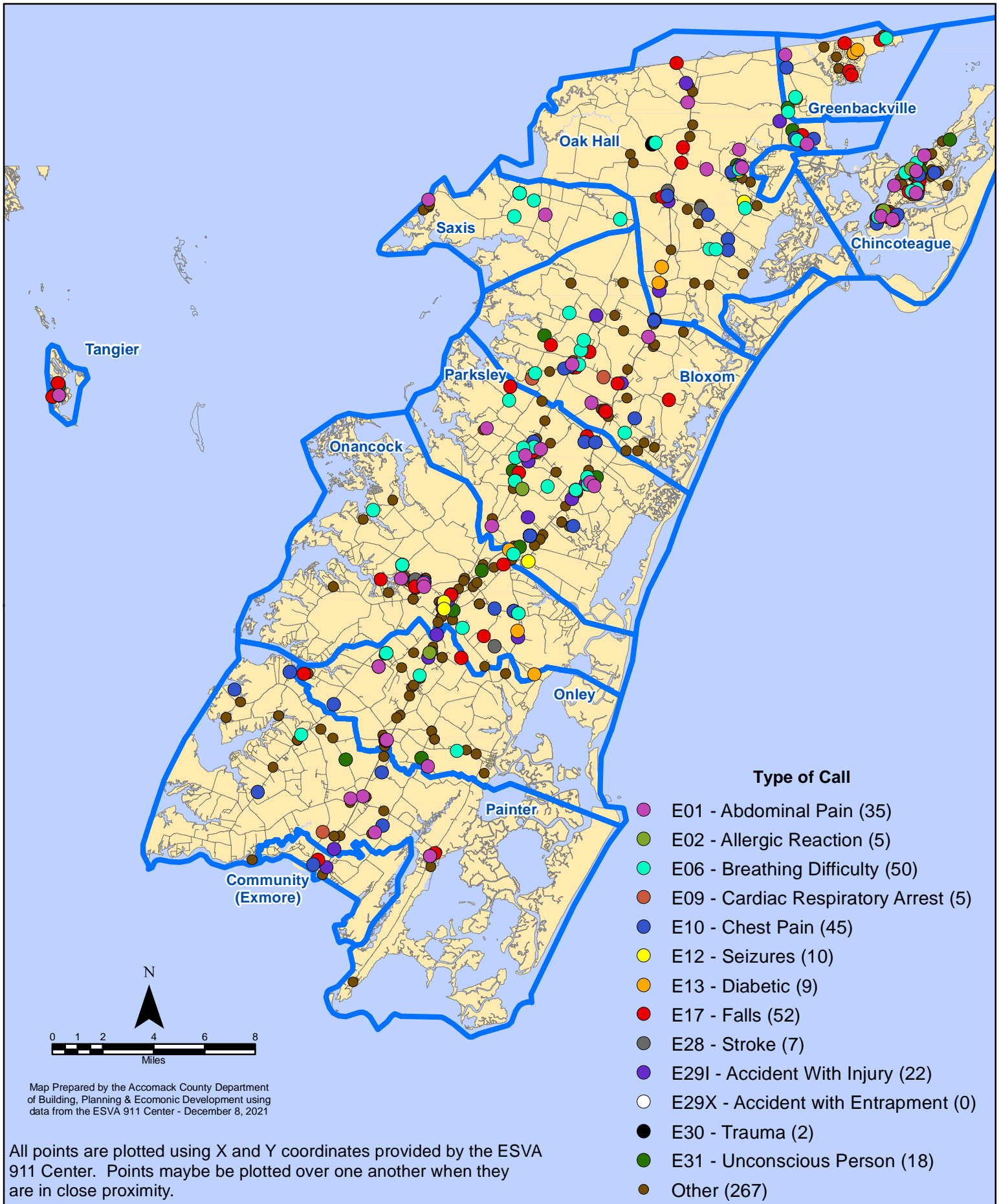
# November 2021 EMS Calls With Response Time Greater Than 20 Mins.



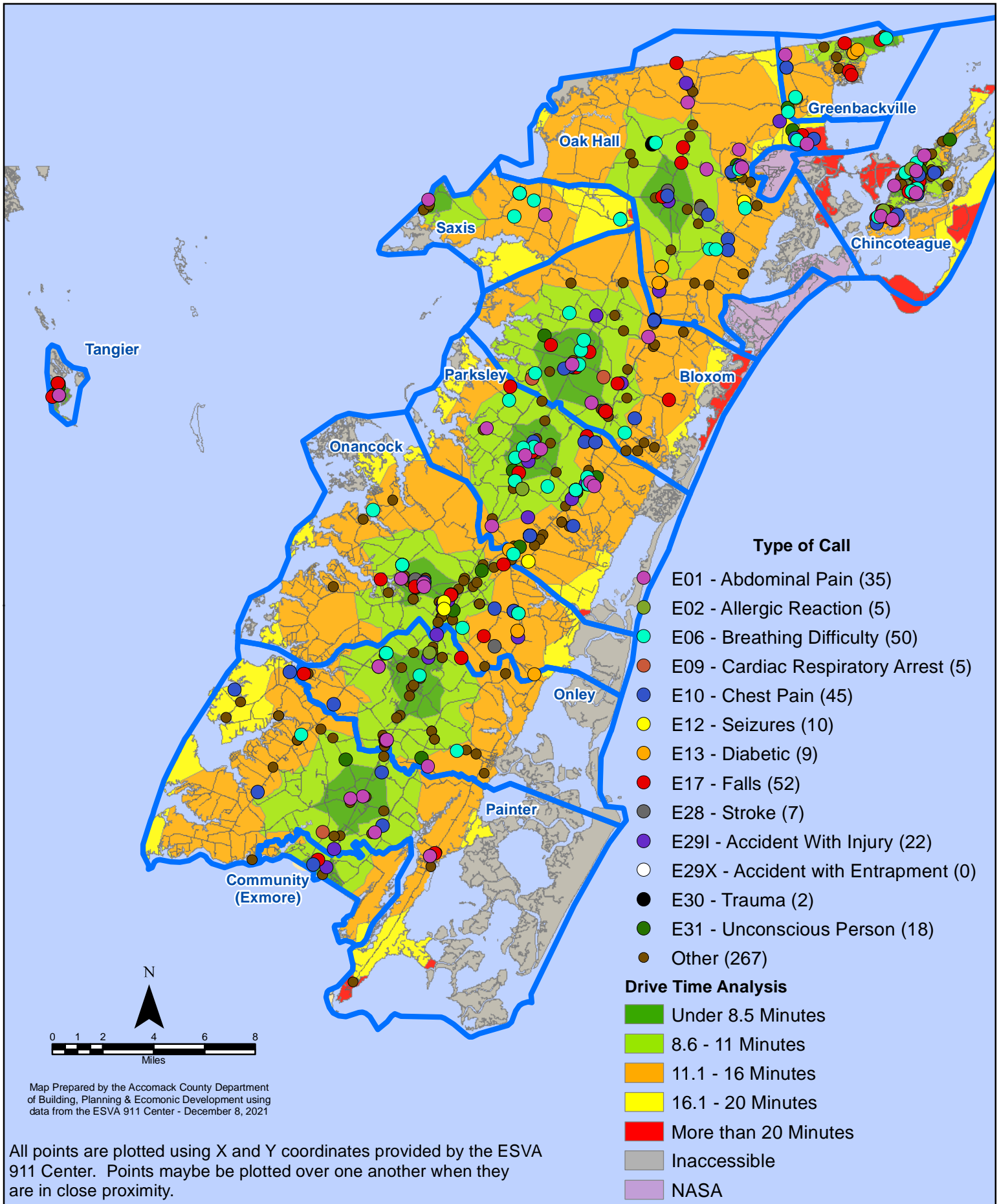
All points are plotted using X and Y coordinates provided by the ESVA 911 Center. Points may be plotted over one another when they are in close proximity.

Map Prepared by the Accomack County Department of Building, Planning & Economic Development using data from the ESVA 911 Center - December 8, 2021

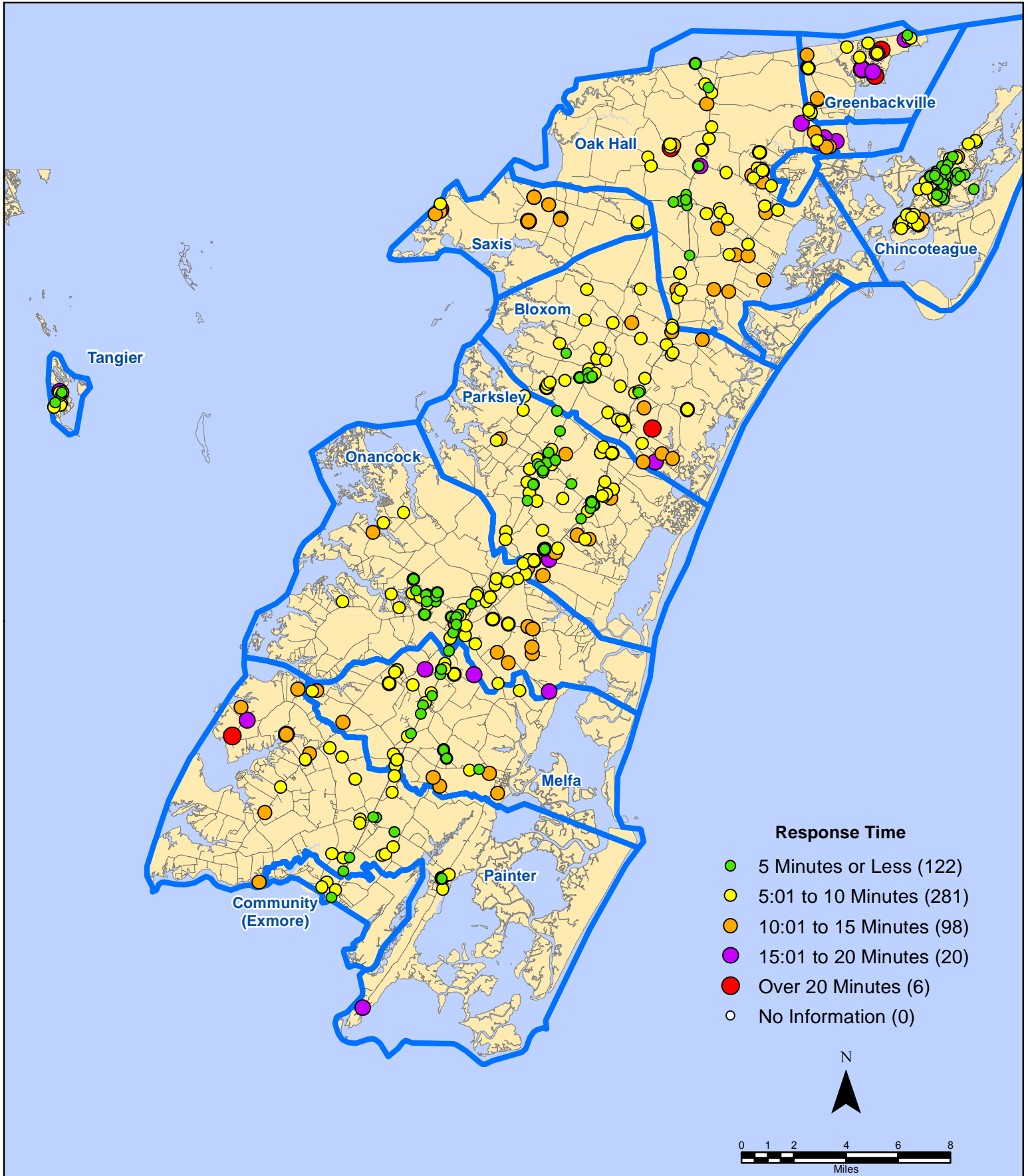
# November 2021 EMS Calls By Type



# November 2021 EMS Calls By Type



# November 2021 EMS Calls By Response Time

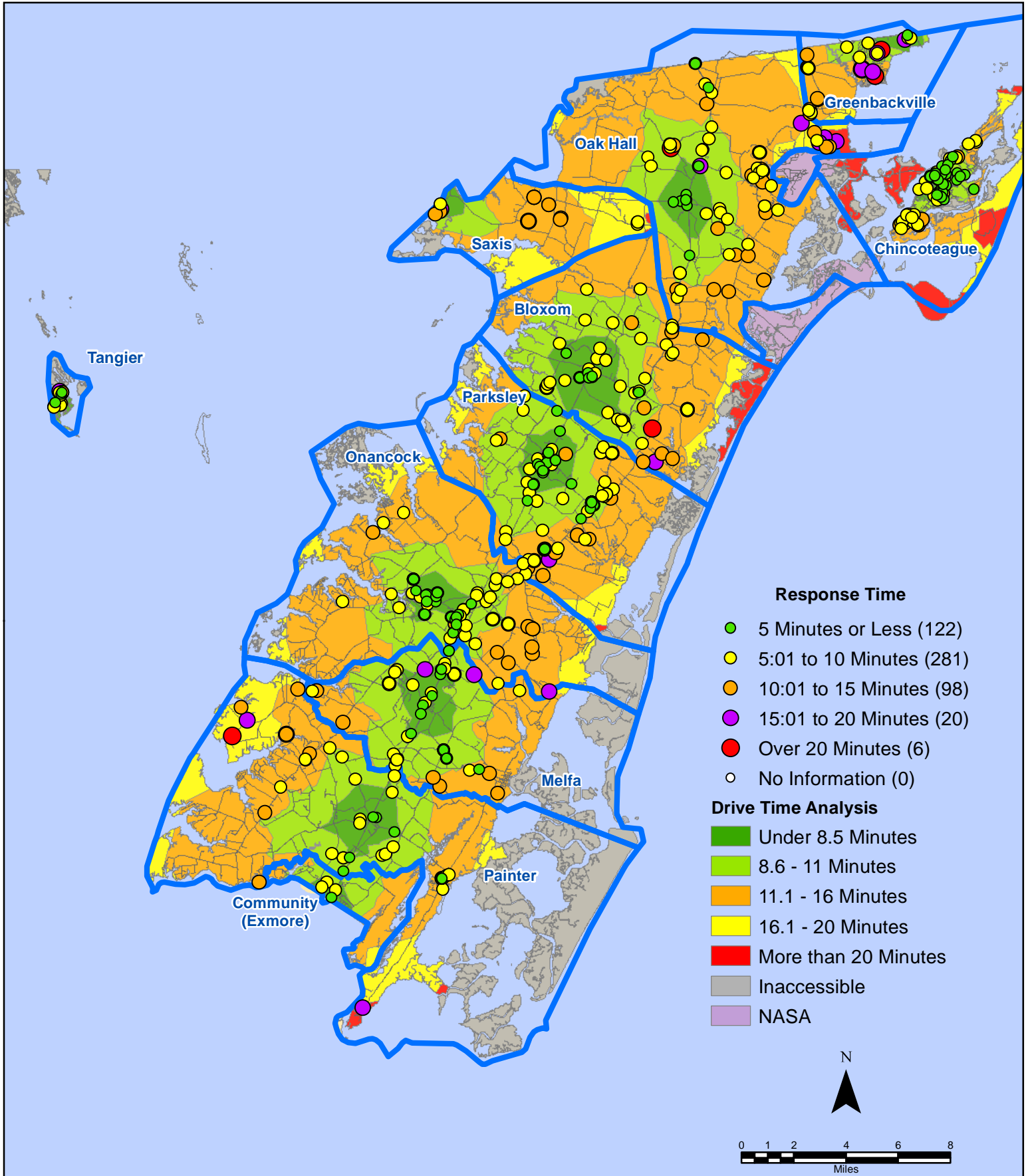


All points are plotted using X and Y coordinates provided by the ESVA 911 Center.  
Points may be plotted over one another when they are in close proximity.

Map Prepared by the Accomack County Department of Building, Planning & Economic Development using data from the ESVA 911 Center - December 13, 2021



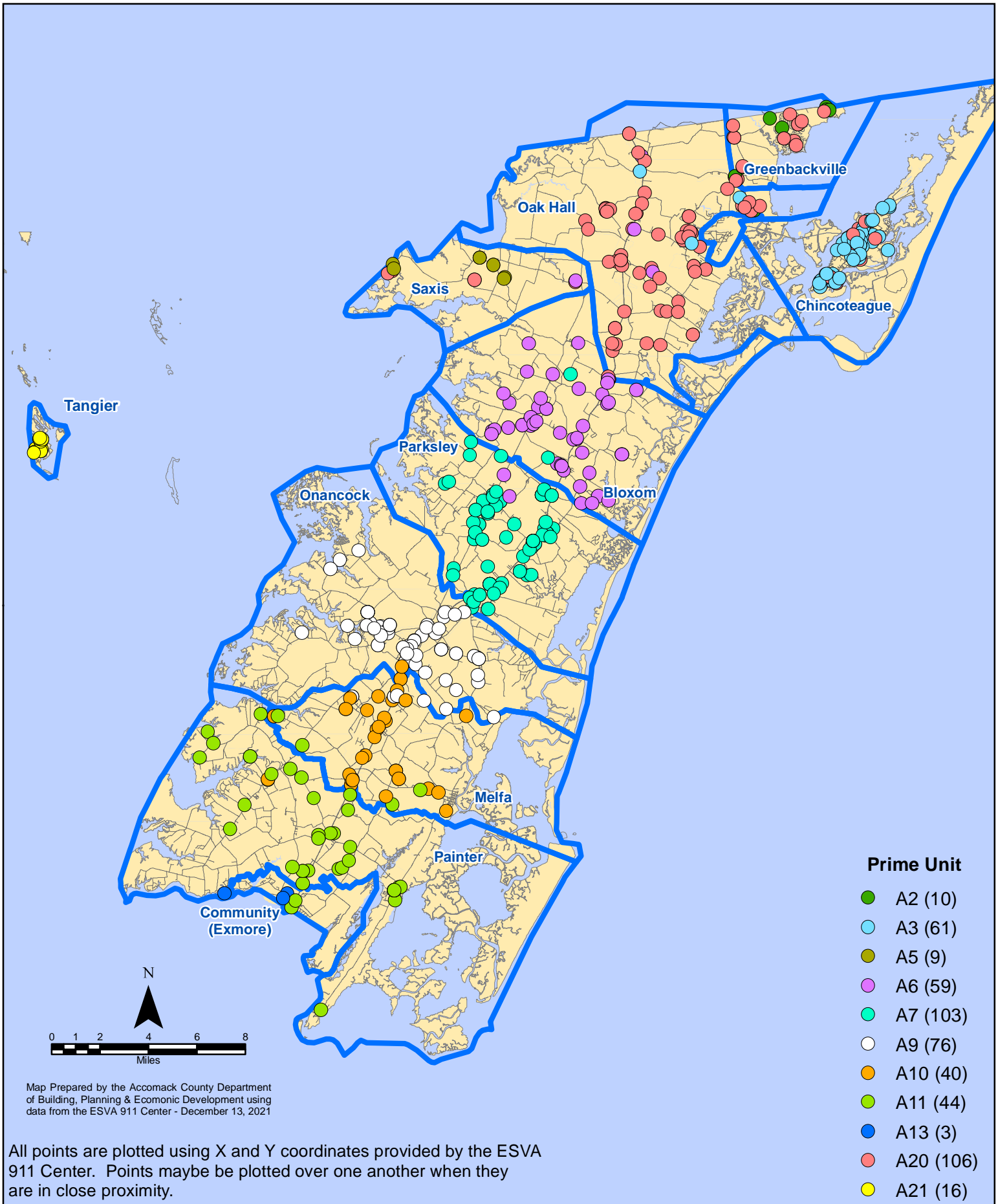
# November 2021 EMS Calls By Response Time



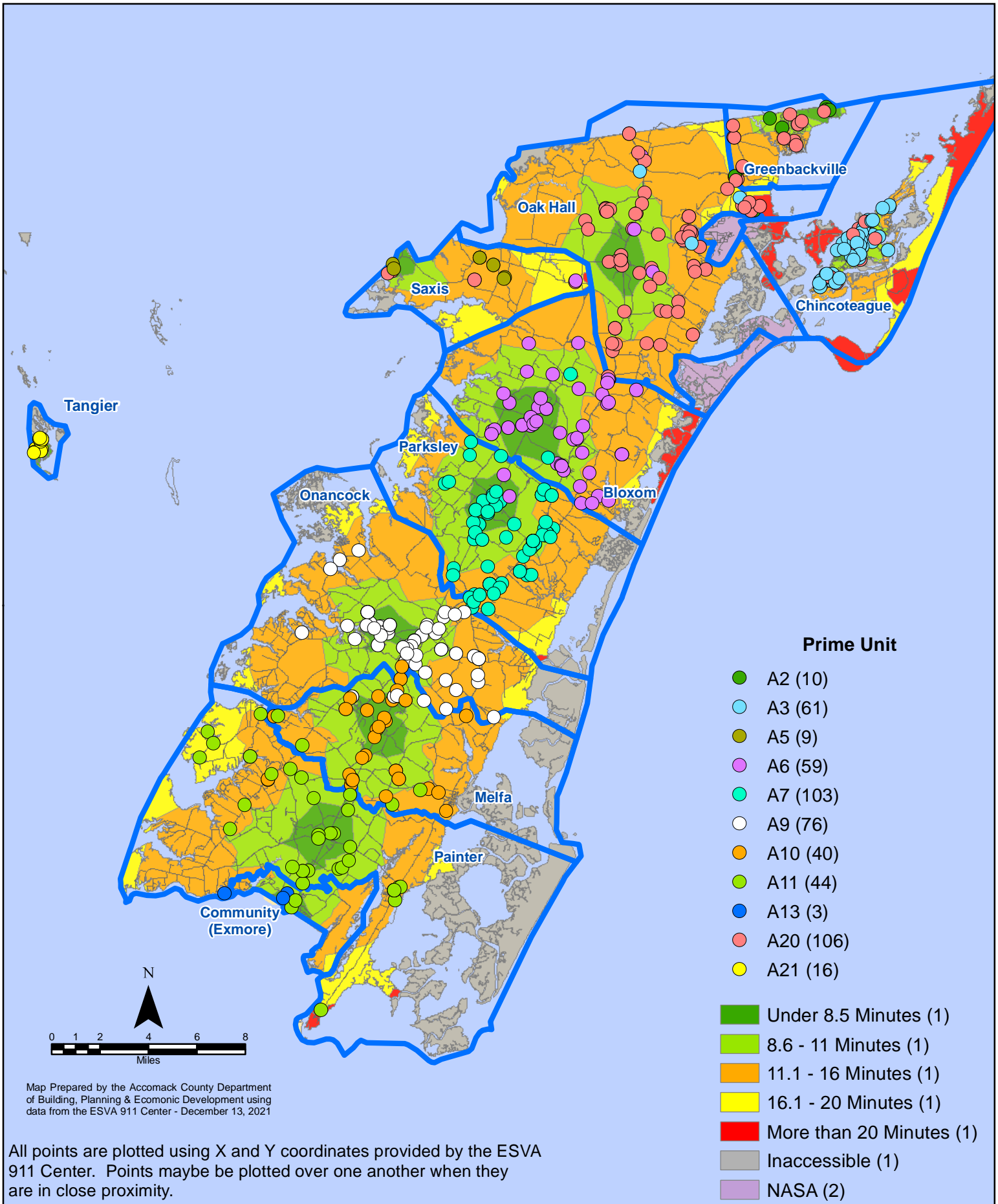
All points are plotted using X and Y coordinates provided by the ESVA 911 Center. Points may be plotted over one another when they are in close proximity.

Map Prepared by the Accomack County Department of Building, Planning & Economic Development using data from the ESVA 911 Center - December 13, 2021

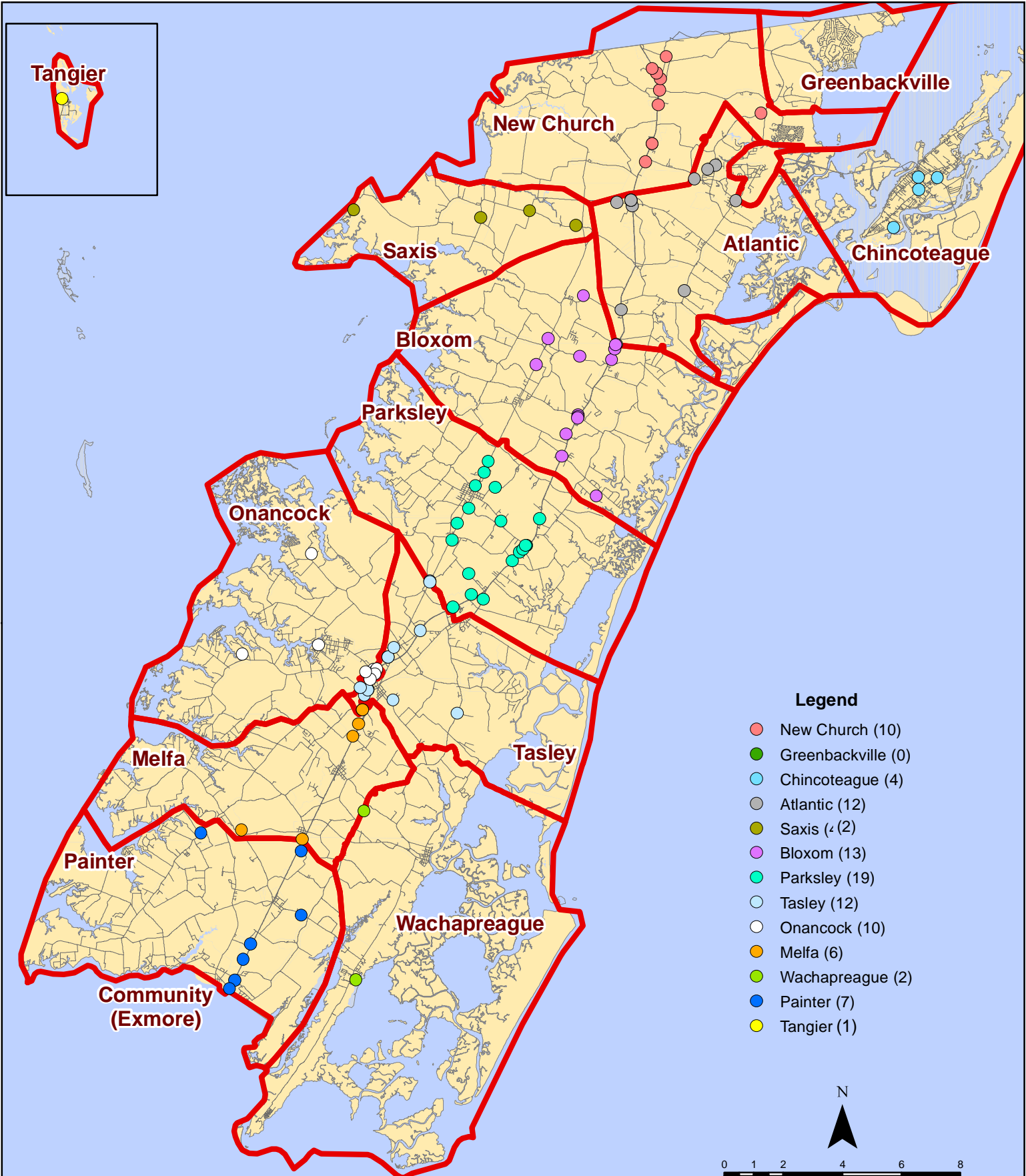
# November 2021 EMS Calls By Prime Unit



# November 2021 EMS Calls By Prime Unit



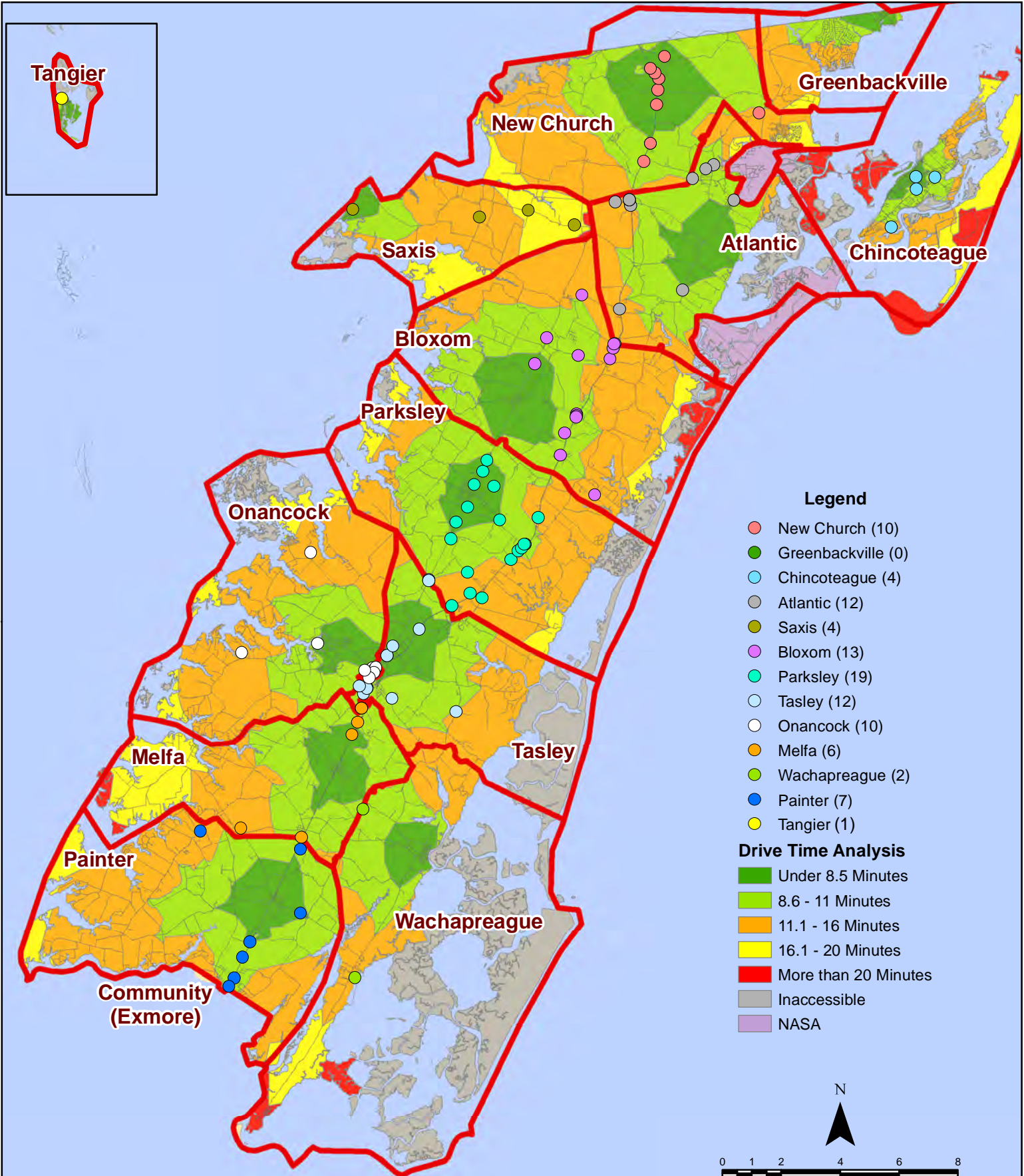
# November 2021 Fire Calls By District



All points are plotted using X and Y coordinates provided by the ESVA 911 Center. Points may be plotted over one another when they are in close proximity.

Map Prepared by the Accomack County Department of Building, Planning & Economic Development using data from the ESVA 911 Center - December 7, 2021

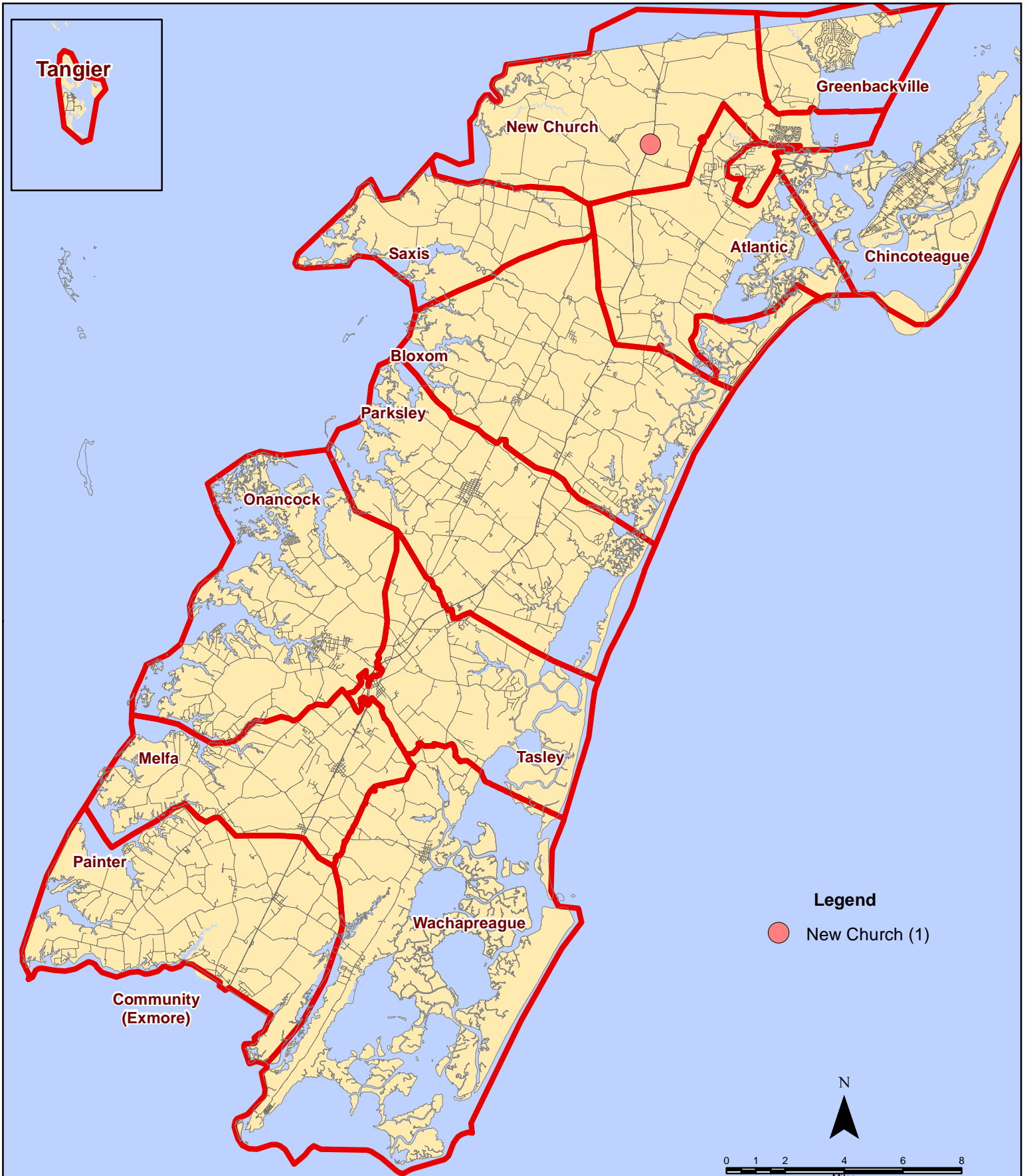
# November 2021 Fire Calls By District



All points are plotted using X and Y coordinates provided by the ESVA 911 Center. Points may be plotted over one another when they are in close proximity.

Map Prepared by the Accomack County Department of Building, Planning & Economic Development using data from the ESVA 911 Center - December 7, 2021

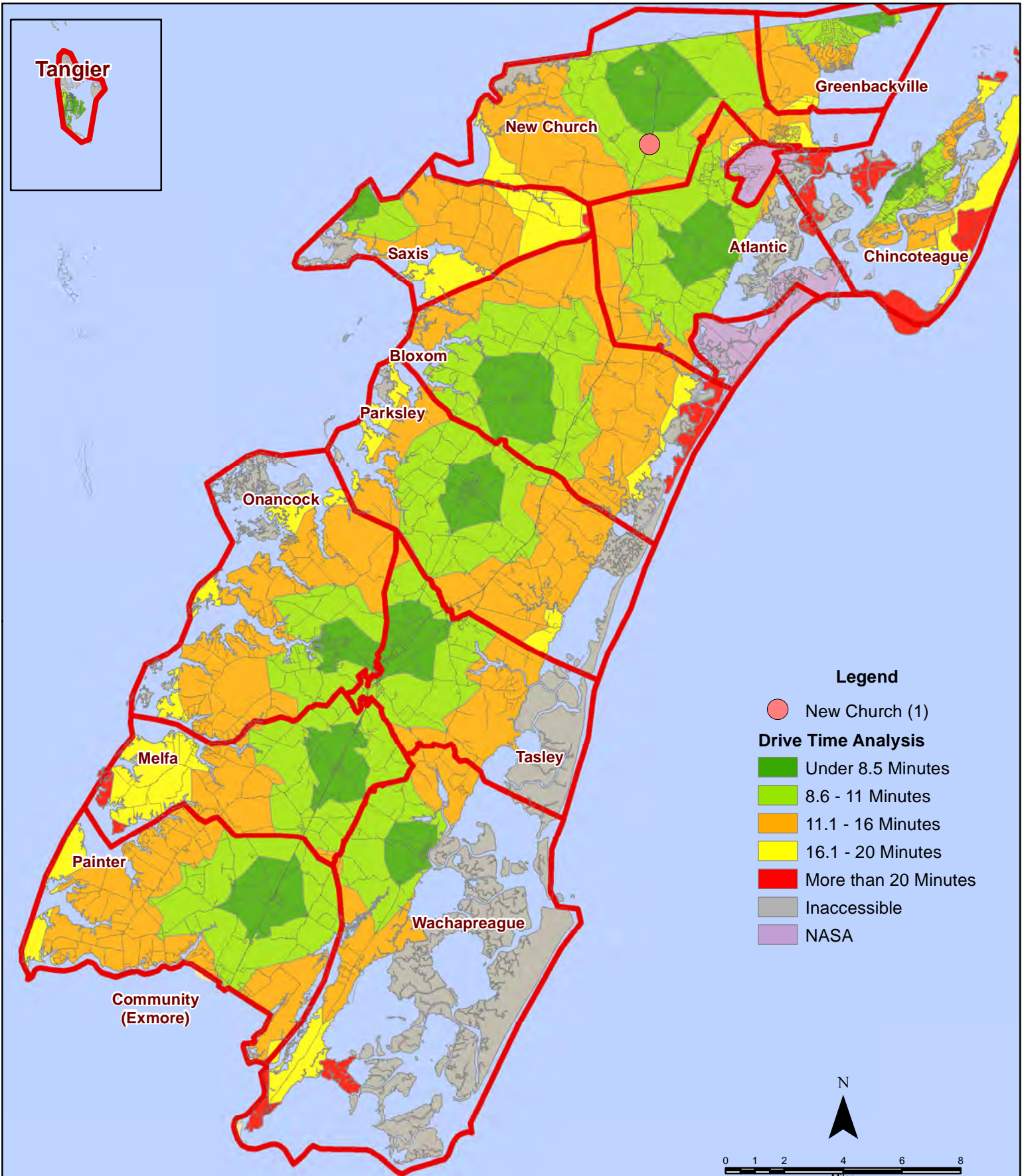
# November 2021 Fire Calls With Response Time Greater Than 20 Mins.



All points are plotted using X and Y coordinates provided by the ESVA 911 Center. Points may be plotted over one another when they are in close proximity.

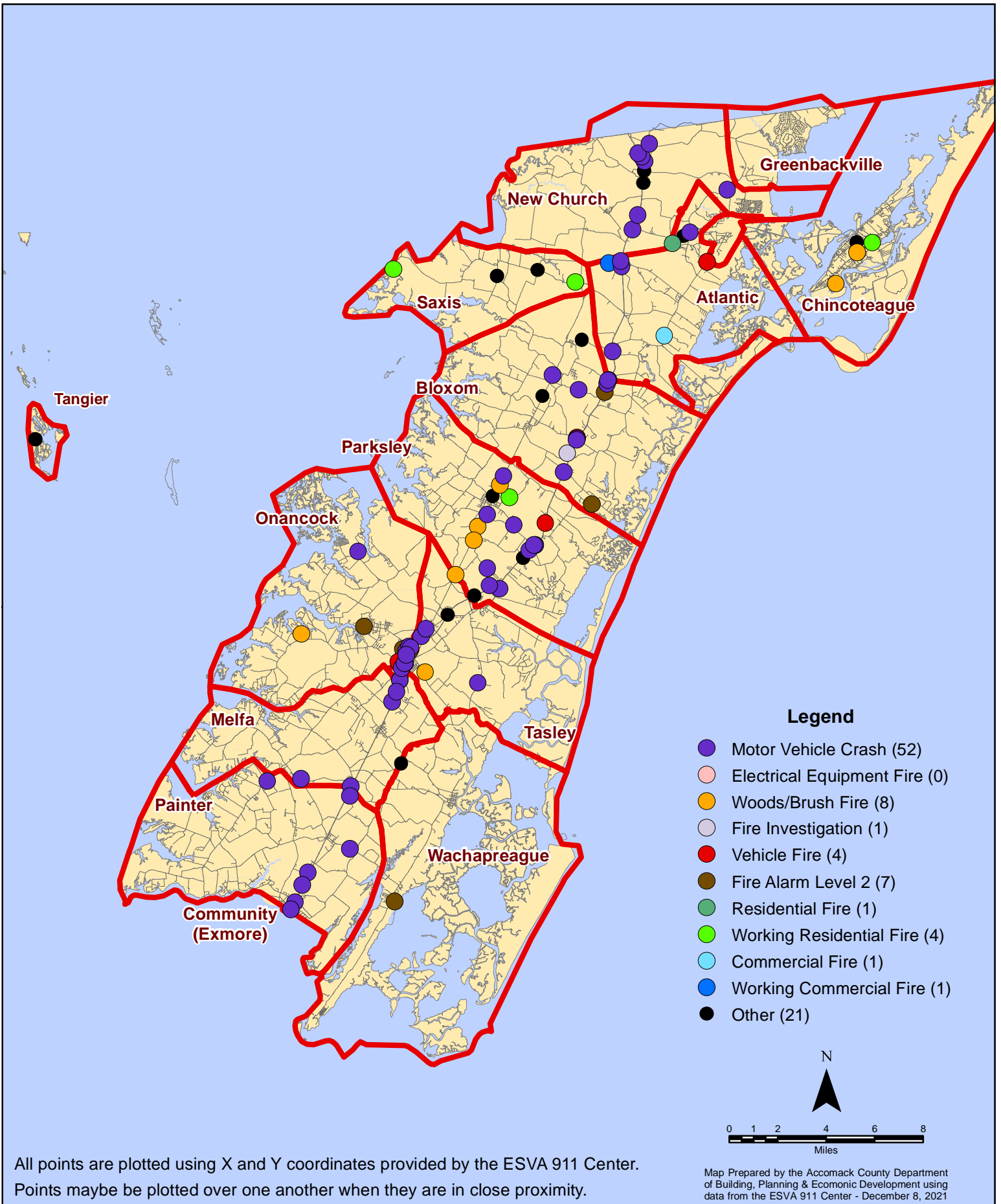
Map Prepared by the Accomack County Department of Building, Planning & Economic Development using data from the ESVA 911 Center - December 7, 2021

# November 2021 Fire Calls With Response Time Greater Than 20 Mins.



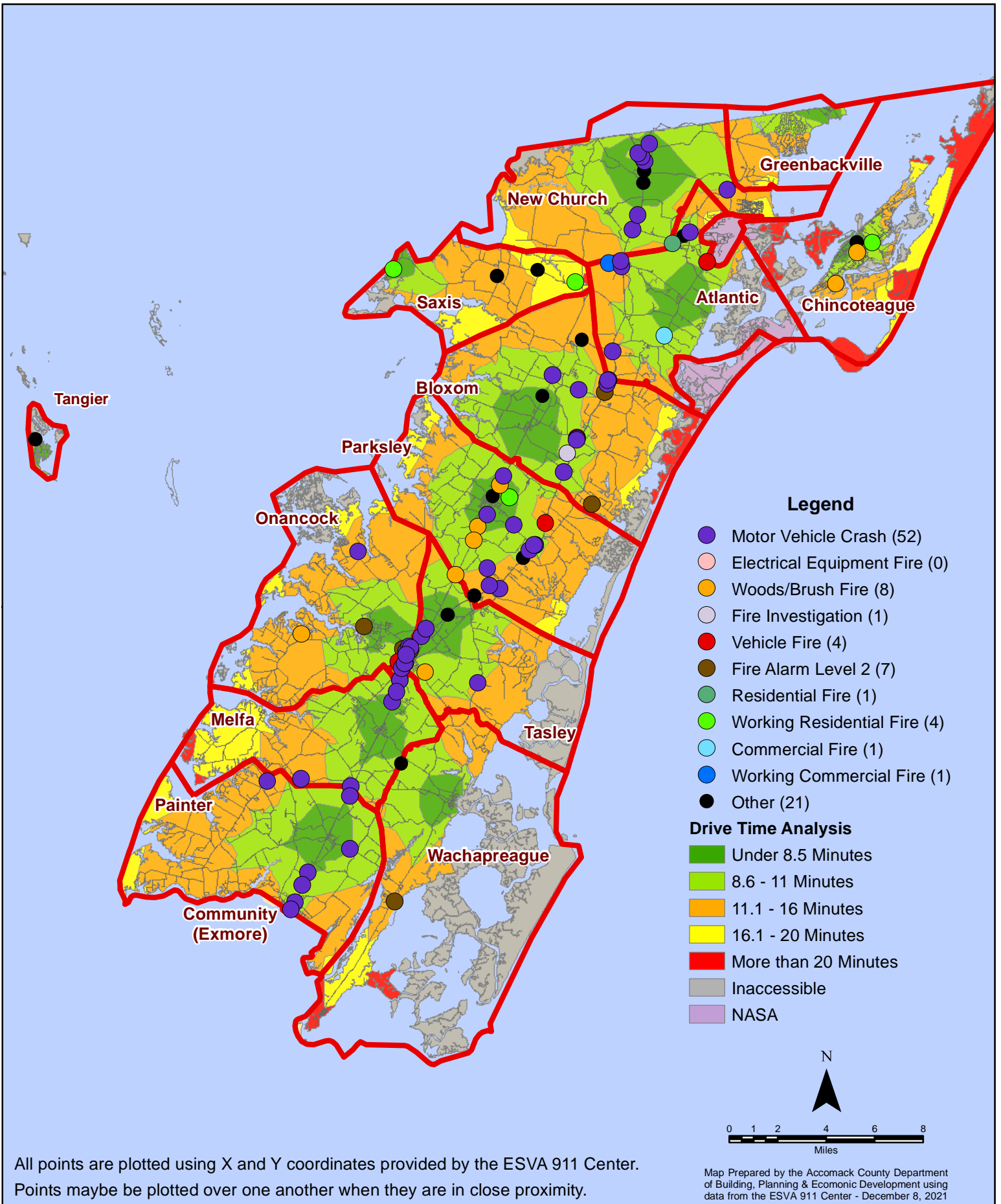
All points are plotted using X and Y coordinates provided by the ESVA 911 Center. Points maybe be plotted over one another when they are in close proximity.

# November 2021 Fire Calls By Type





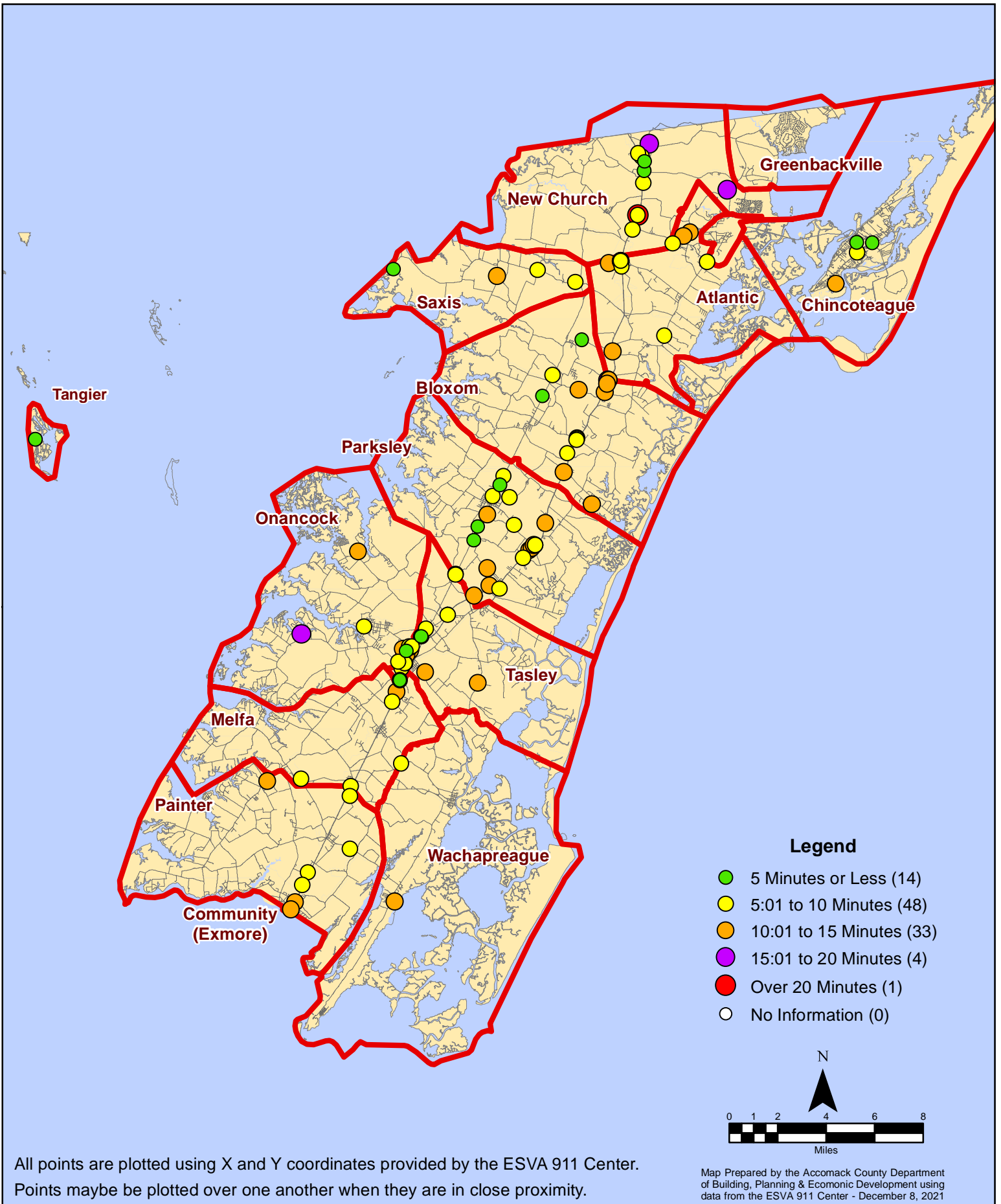
# November 2021 Fire Calls By Type



All points are plotted using X and Y coordinates provided by the ESVA 911 Center. Points may be plotted over one another when they are in close proximity.

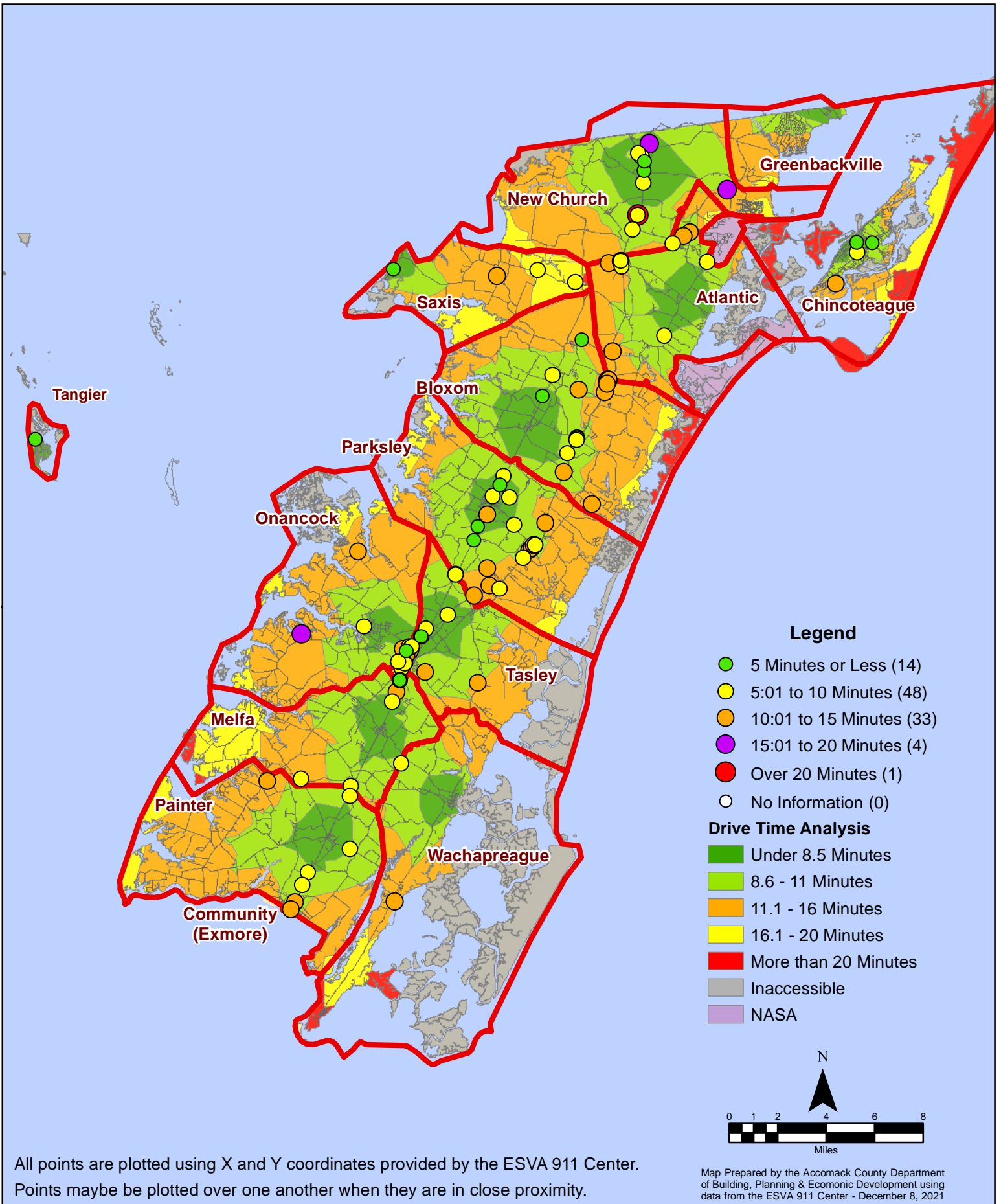
Map Prepared by the Accomack County Department of Building, Planning & Economic Development using data from the ESVA 911 Center - December 8, 2021

# November 2021 Fire Calls By Response Time



All points are plotted using X and Y coordinates provided by the ESVA 911 Center. Points may be plotted over one another when they are in close proximity.

# November 2021 Fire Calls By Response Time



All points are plotted using X and Y coordinates provided by the ESVA 911 Center. Points may be plotted over one another when they are in close proximity.