

June 2022

Fire - Performance Measure Data *					
Response District	Total Calls in District	Greater than 20 min. Response Time	Longest Response Time	Calls Handled by other agency	Overall Station Benchmark %
New Church	8	0	0:18:41	2	100.0%
Greenbackville	4	0	0:10:58	1	100.0%
Chincoteague	8	0	0:13:09	1	100.0%
Atlantic	13	0	0:17:19	2	100.0%
Saxis	3	0	0:15:02	0	100.0%
Bloxom	17	0	0:19:11	1	100.0%
Parksley	13	0	0:12:00	0	100.0%
Tasley	10	0	0:12:18	1	100.0%
Onancock	14	1	0:31:12	1	92.9%
Melfa	9	0	0:18:29	4	100.0%
Wachapreague	1	0	0:16:22	0	100.0%
Painter	1	0	0:04:55	0	100.0%
Tangier					#DIV/0!
System Totals	101	1	0:31:12	13	99.0%

EMS - Performance Measure Data						
Response District	Total Calls in District	Greater than 20 min. Response Time	Longest Response Time	Calls Handled by other agency	Station Benchmark Compliance %	Overall Station Reliability %
Greenbackville	18	5	0:45:48	15	72.2%	16.7%
Chincoteague	97	1	0:25:13	2	99.0%	97.9%
Saxis	11	0	0:14:06	0	100.0%	100.0%
Bloxom	45	0	0:18:43	3	100.0%	93.3%
Parksley	83	0	0:18:13	3	100.0%	96.4%
Onancock	96	0	0:15:07	4	100.0%	95.8%
Melfa	59	0	0:12:47	29	100.0%	50.8%
Wachapreague (Painter)	29	0	0:17:55	4	100.0%	86.2%
Oak Hall	93	2	0:22:37	12	97.8%	87.1%
Tangier	5	0	0:13:33	0	100.0%	100.0%
Community (Exmore)	10	0	0:14:17	2	100.0%	80.0%
System Totals	546	8	0:45:48	74	98.5%	86.4%

EMS Mutual Aid Data		Station Giving Aid															
Station Receiving Aid		Greenbackville	Chincoteague	Saxis	Bloxom	Parksley	Onancock	Melfa	Wachapreague/Painter	Oak Hall	Community (Exmore)	Northampton	Wallops	NORS	2nd Call	3rd Call	
		Greenbackville		1							14					14	1
Chincoteague									2						2		
Saxis																	
Bloxom					2	1								1	2		
Parksley				2		1									3		
Onancock				1	2		1								4		
Melfa					1	14		14							24	5	
Wachapreague (Painter)							1								3	1	
Oak Hall		1	6		5					3					1	9	2
Community (Exmore)									2						1	1	
Northampton Co.																	
Wallops																	
Totals		1	7	0	8	5	16	2	16	16	3	0	0	44	28	2	

Transport Destination			
Hospital Destination by Unit	Riverside - Shore Memorial	PRMC / Tidal Health	Other
	Greenbackville	2	1
Chincoteague	33	30	1
Saxis	6	3	
Bloxom	31	3	
Parksley	54		1
Onancock	77		
Melfa	22		
Wachapreague (Painter)	41	1	
Oak Hall	43	23	
Wallops			
Totals	309	61	3

Benchmark = The Accomack County Board of Supervisors established a 20 minute standard for emergency response.

NORS = No Response by station or the call was handled by another station or agency.

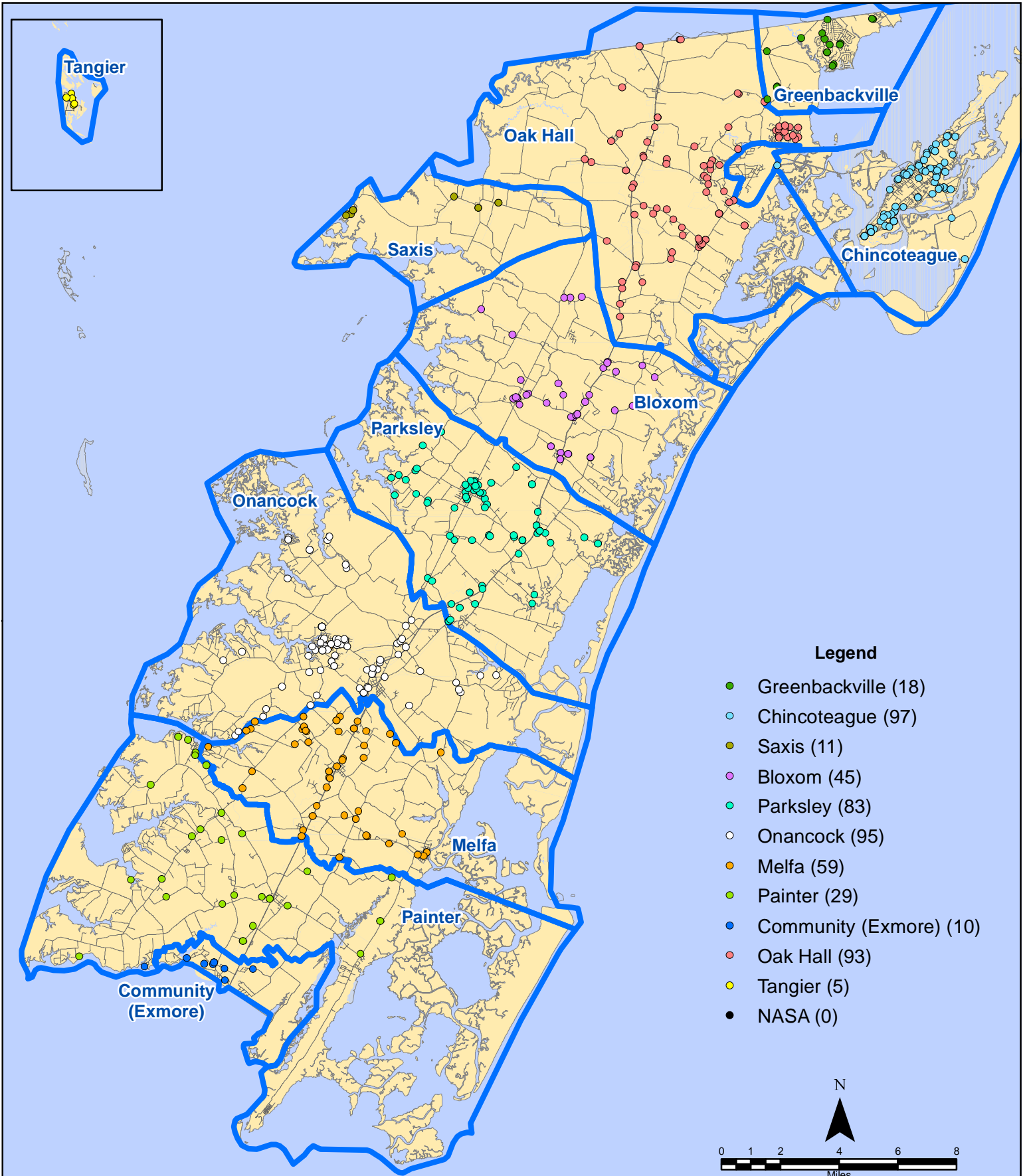
2nd Call = 2nd ambulance call received while first ambulance was on another call.

3rd Call = 3rd ambulance call received while first & second ambulances were on other calls.

* This data excludes F1 Med (Medical Assist) calls in the Fire Data.

This information was prepared using data supplied by the Eastern Shore of Virginia 911 Center. This information is original incident data only and may not be representative of all units and/or stations who responded to an incident.

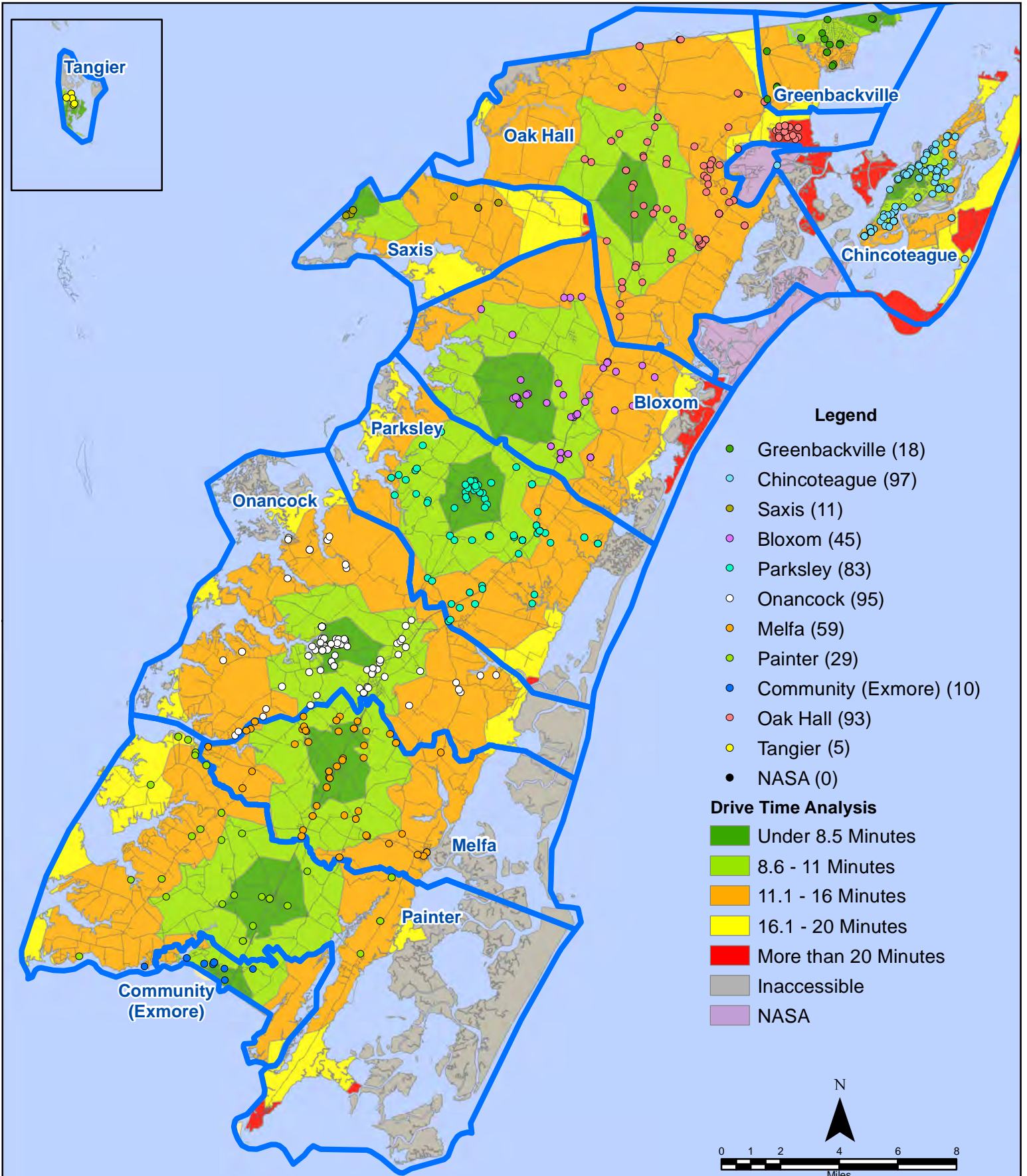
June 2022 EMS Calls By District



All points are plotted using X and Y coordinates provided by the ESVA 911 Center.
Points may be plotted over one another when they are in close proximity.

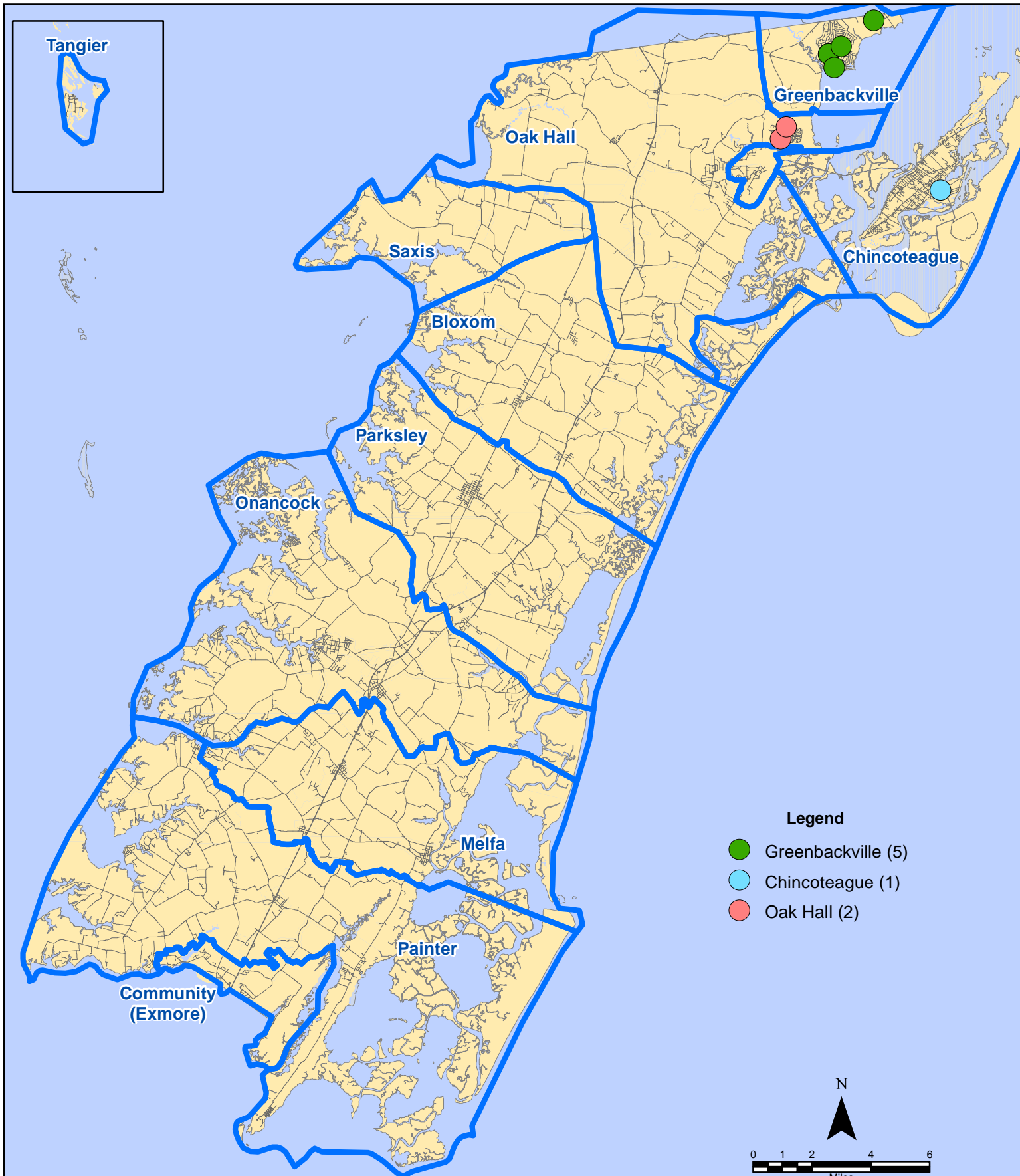
Map Prepared by the Accomack County Department of Building, Planning & Economic Development using data from the ESVA 911 Center - July 12, 2022

June 2022 EMS Calls By District



All points are plotted using X and Y coordinates provided by the ESVA 911 Center. Points may be plotted over one another when they are in close proximity.

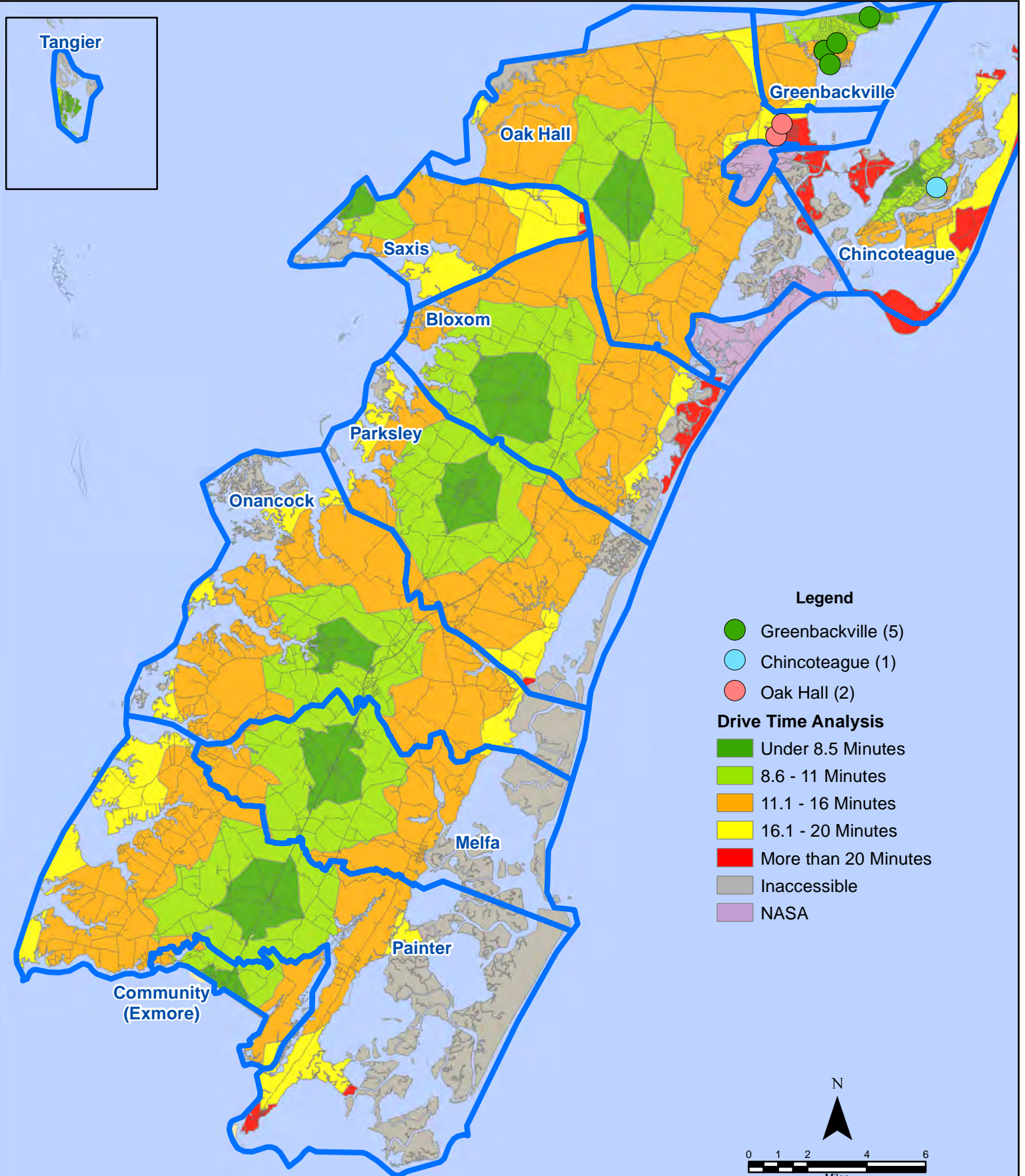
June 2022 EMS Calls With Response Time Greater Than 20 Mins.



All points are plotted using X and Y coordinates provided by the ESVA 911 Center. Points may be plotted over one another when they are in close proximity.

Map Prepared by the Accomack County Department of Building, Planning & Economic Development using data from the ESVA 911 Center - July 12, 2022

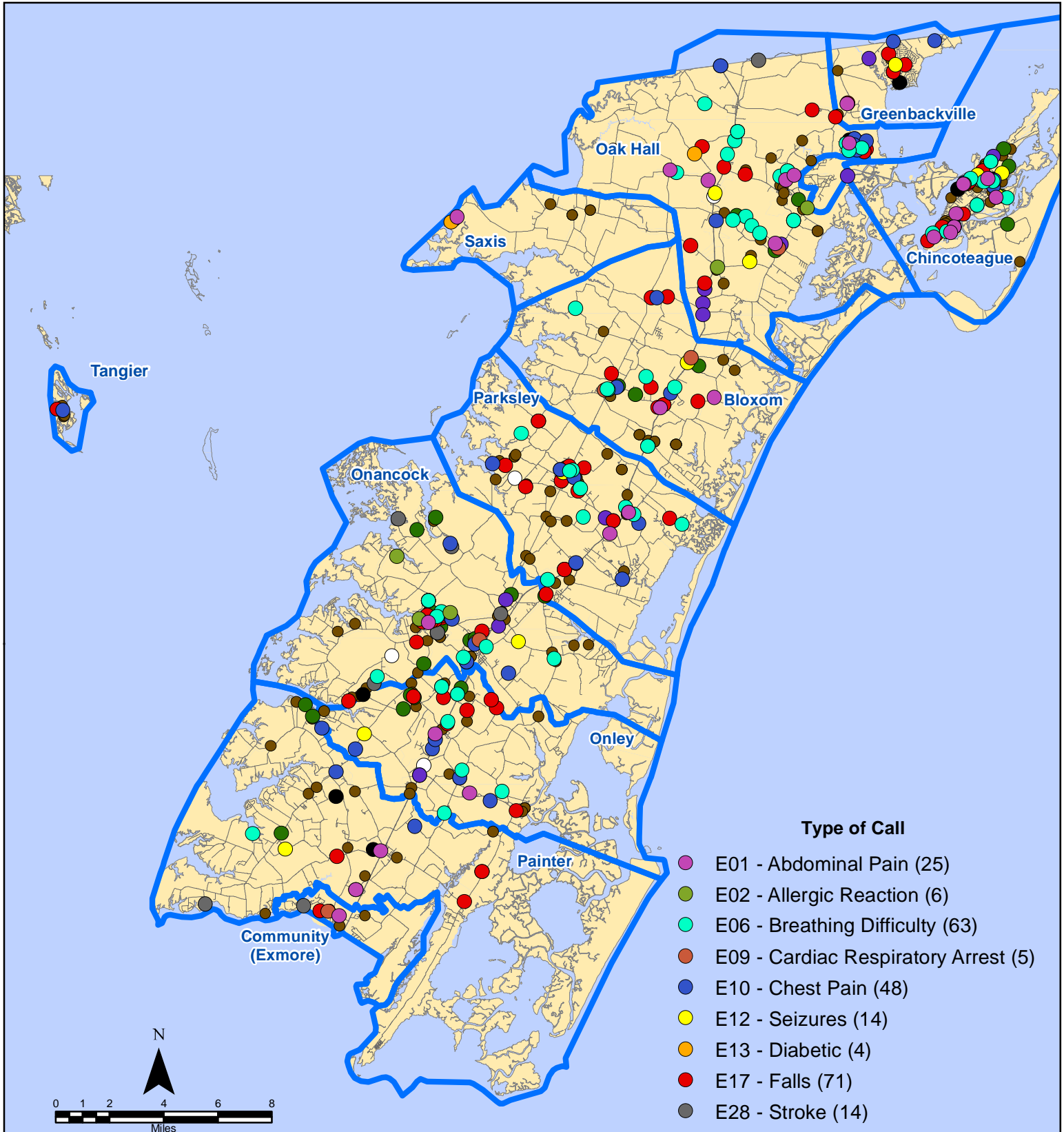
June 2022 EMS Calls With Response Time Greater Than 20 Mins.



All points are plotted using X and Y coordinates provided by the ESVA 911 Center. Points may be plotted over one another when they are in close proximity.

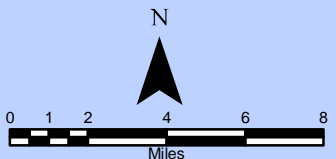
Map Prepared by the Accomack County Department of Building, Planning & Economic Development using data from the ESVA 911 Center - July 12, 2022

June 2022 EMS Calls By Type



Type of Call

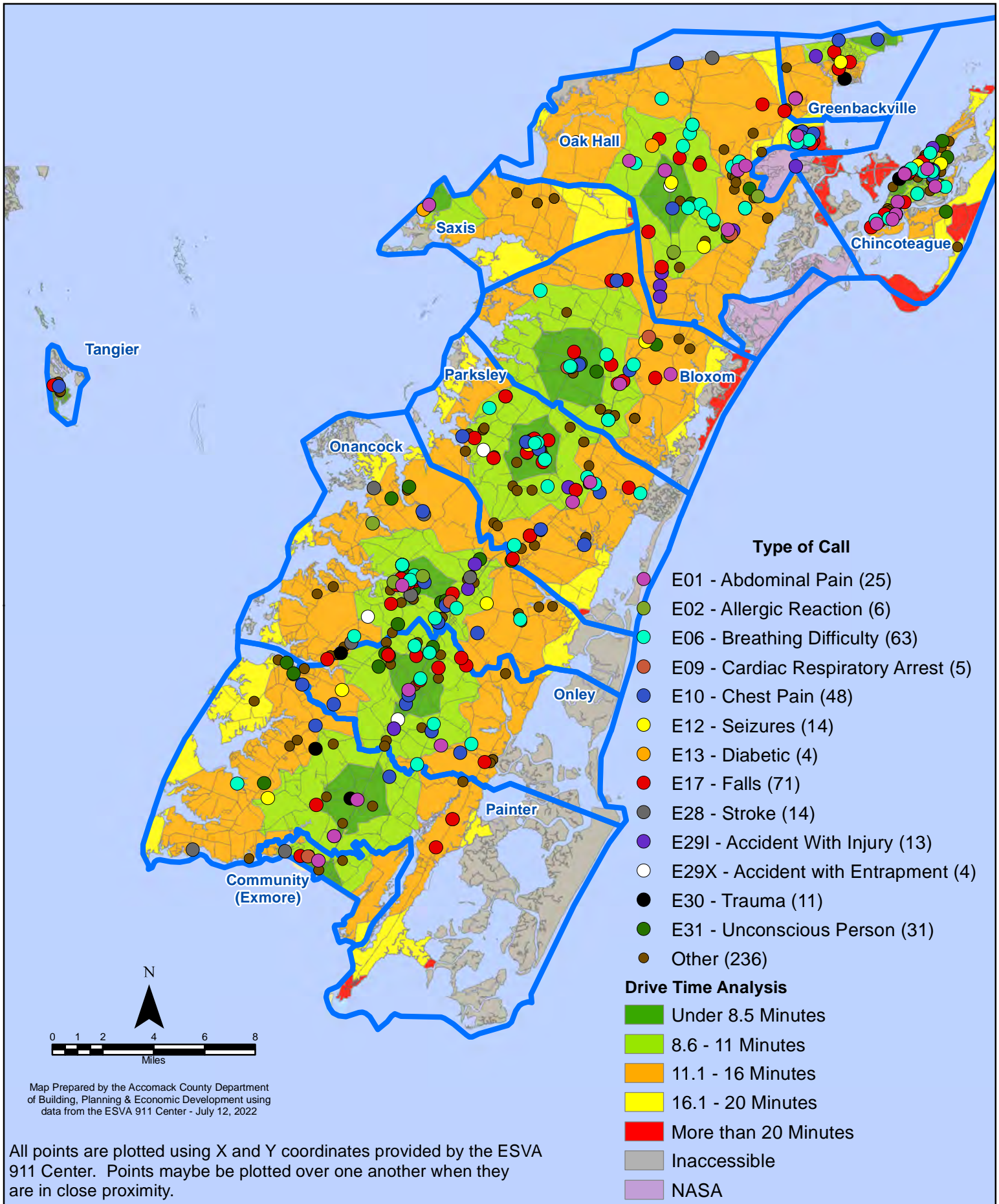
- E01 - Abdominal Pain (25)
- E02 - Allergic Reaction (6)
- E06 - Breathing Difficulty (63)
- E09 - Cardiac Respiratory Arrest (5)
- E10 - Chest Pain (48)
- E12 - Seizures (14)
- E13 - Diabetic (4)
- E17 - Falls (71)
- E28 - Stroke (14)
- E29I - Accident With Injury (13)
- E29X - Accident with Entrapment (4)
- E30 - Trauma (11)
- E31 - Unconscious Person (31)
- Other (236)



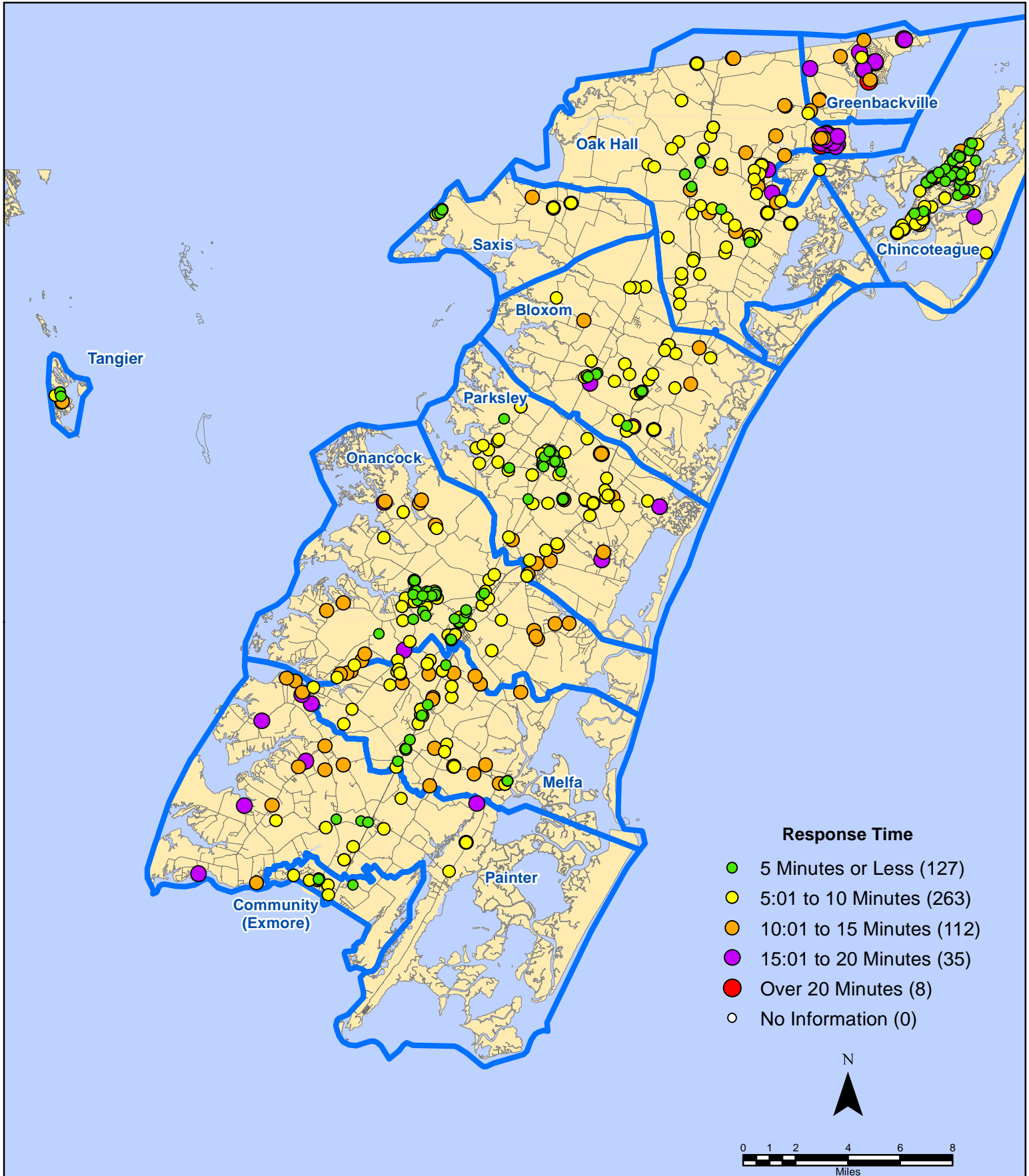
Map Prepared by the Accomack County Department of Building, Planning & Economic Development using data from the ESVA 911 Center - July 12, 2022

All points are plotted using X and Y coordinates provided by the ESVA 911 Center. Points may be plotted over one another when they are in close proximity.

June 2022 EMS Calls By Type



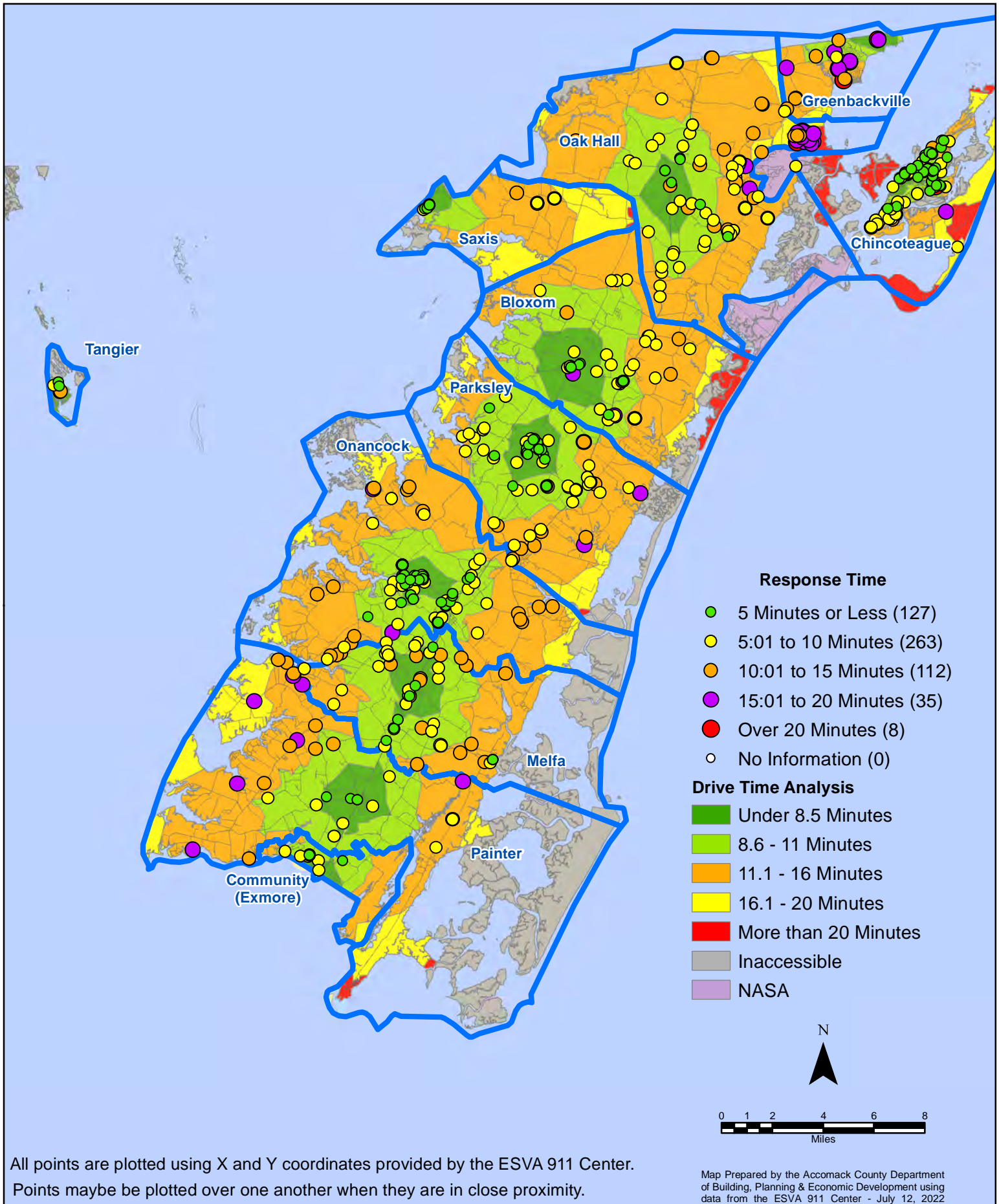
June 2022 EMS Calls By Response Time



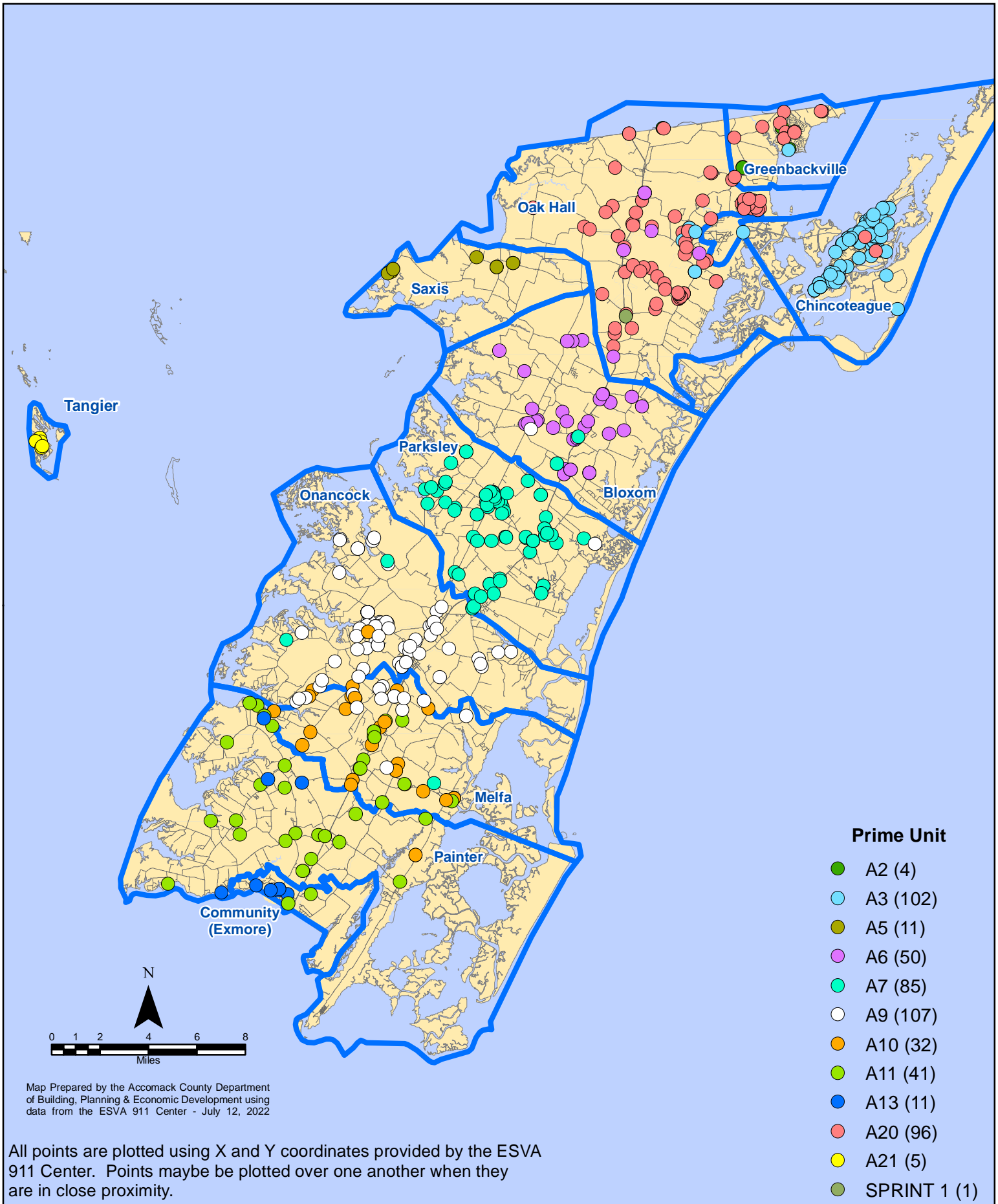
All points are plotted using X and Y coordinates provided by the ESVA 911 Center.
Points may be plotted over one another when they are in close proximity.

Map Prepared by the Accomack County Department of Building, Planning & Economic Development using data from the ESVA 911 Center - July 12, 2022

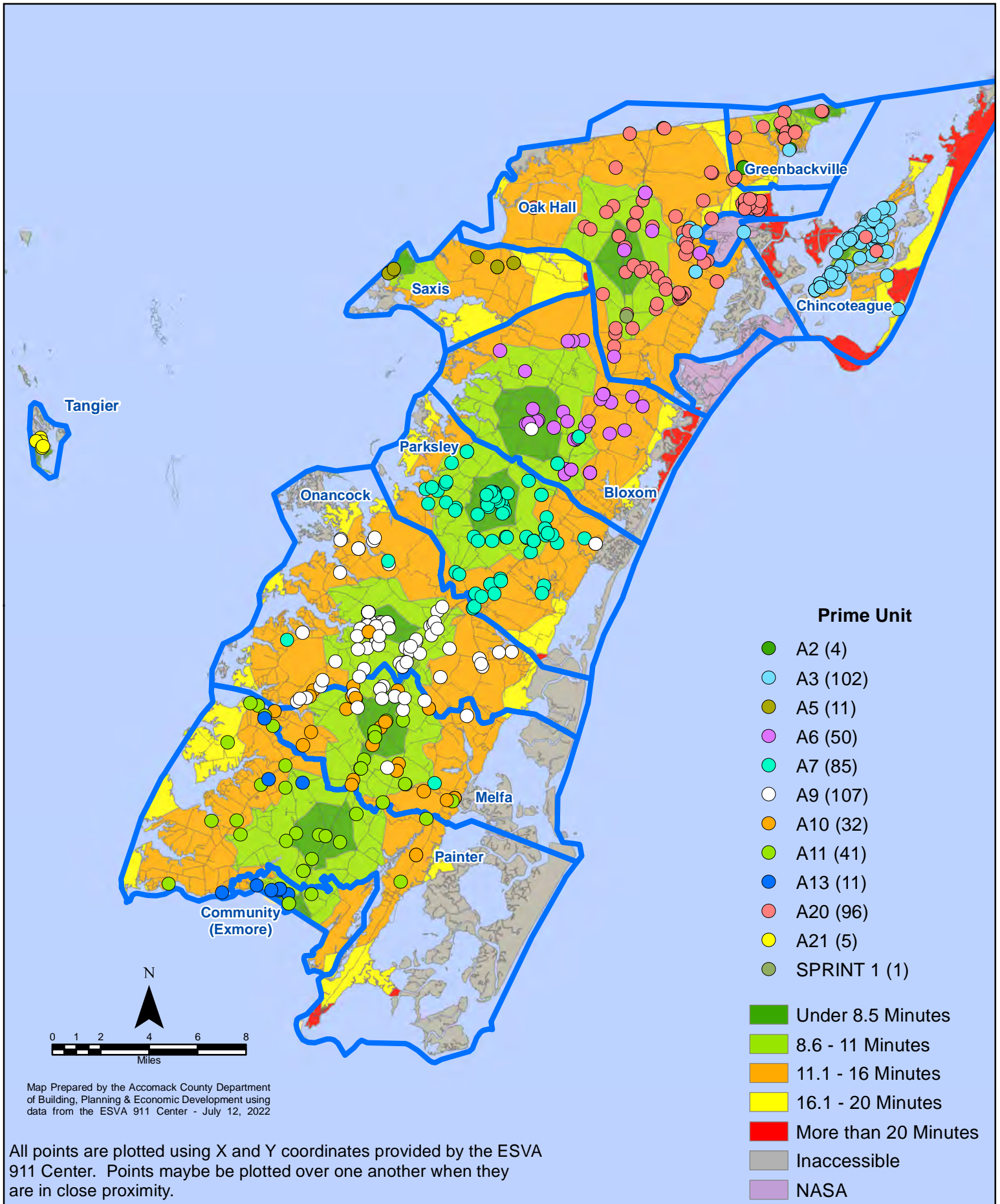
June 2022 EMS Calls By Response Time



June 2022 EMS Calls By Prime Unit

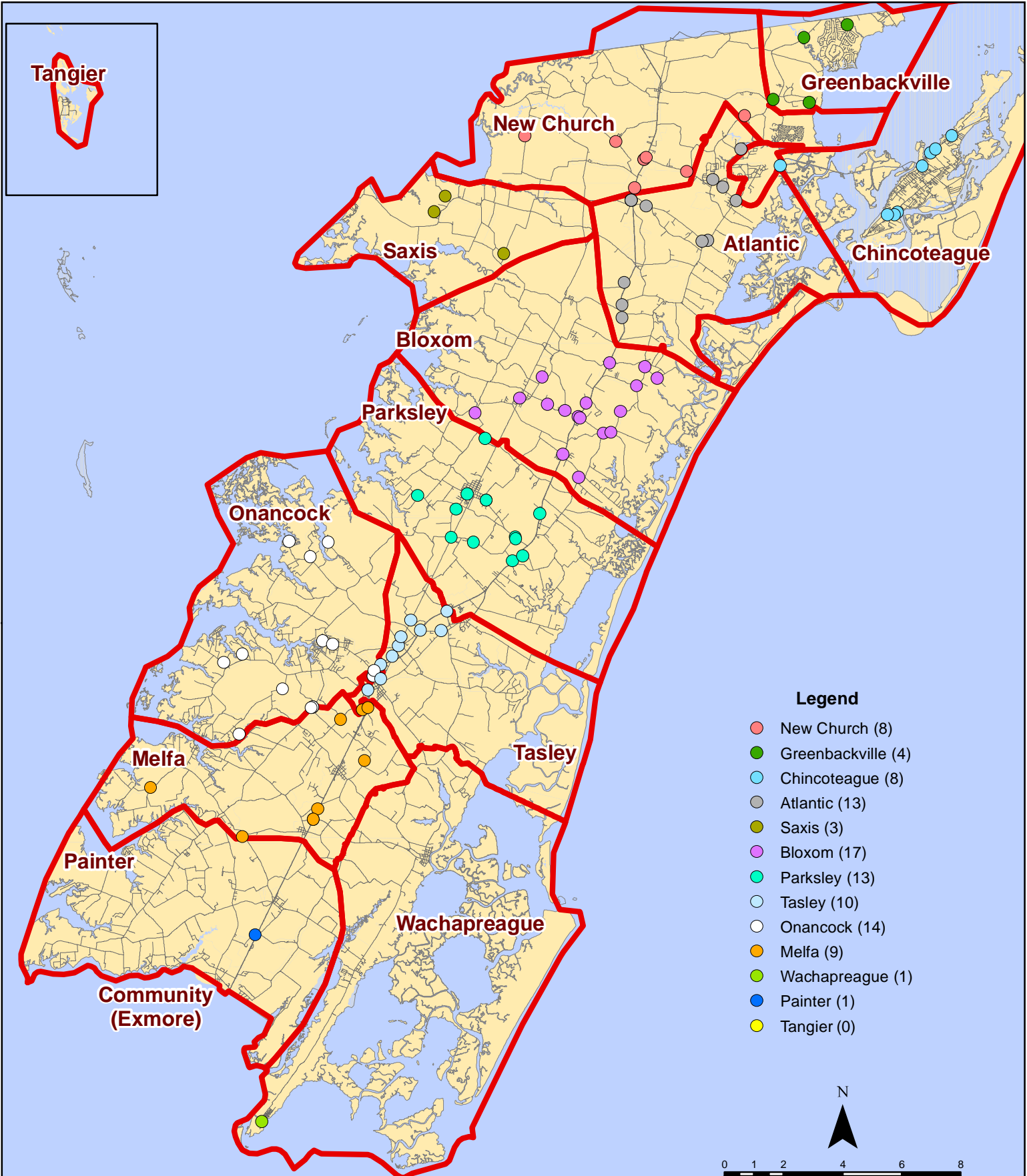


June 2022 EMS Calls By Prime Unit



All points are plotted using X and Y coordinates provided by the ESVA 911 Center. Points may be plotted over one another when they are in close proximity.

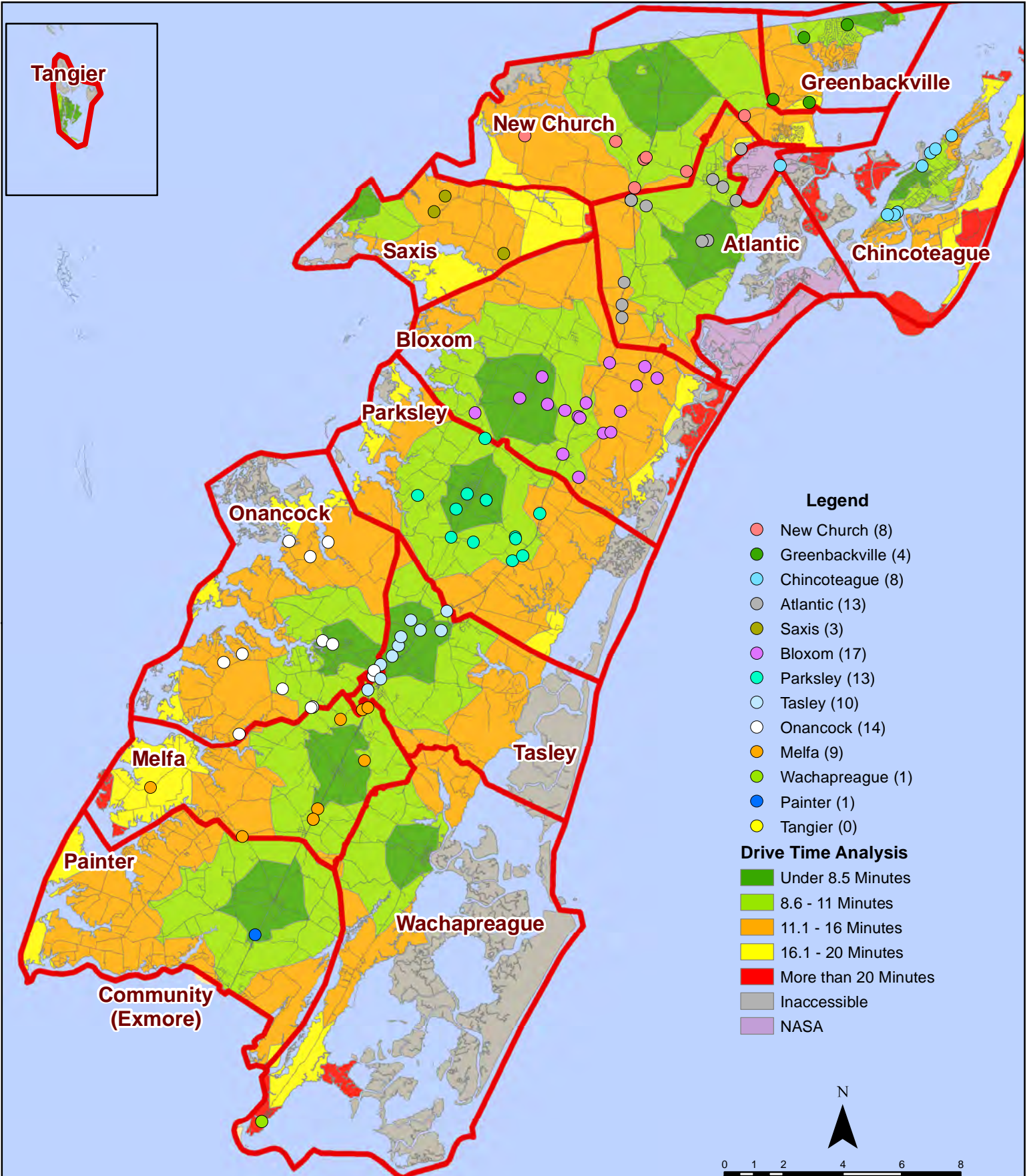
June 2022 Fire Calls By District



All points are plotted using X and Y coordinates provided by the ESVA 911 Center. Points may be plotted over one another when they are in close proximity.

Map Prepared by the Accomack County Department of Building, Planning & Economic Development using data from the ESVA 911 Center - July 11, 2022

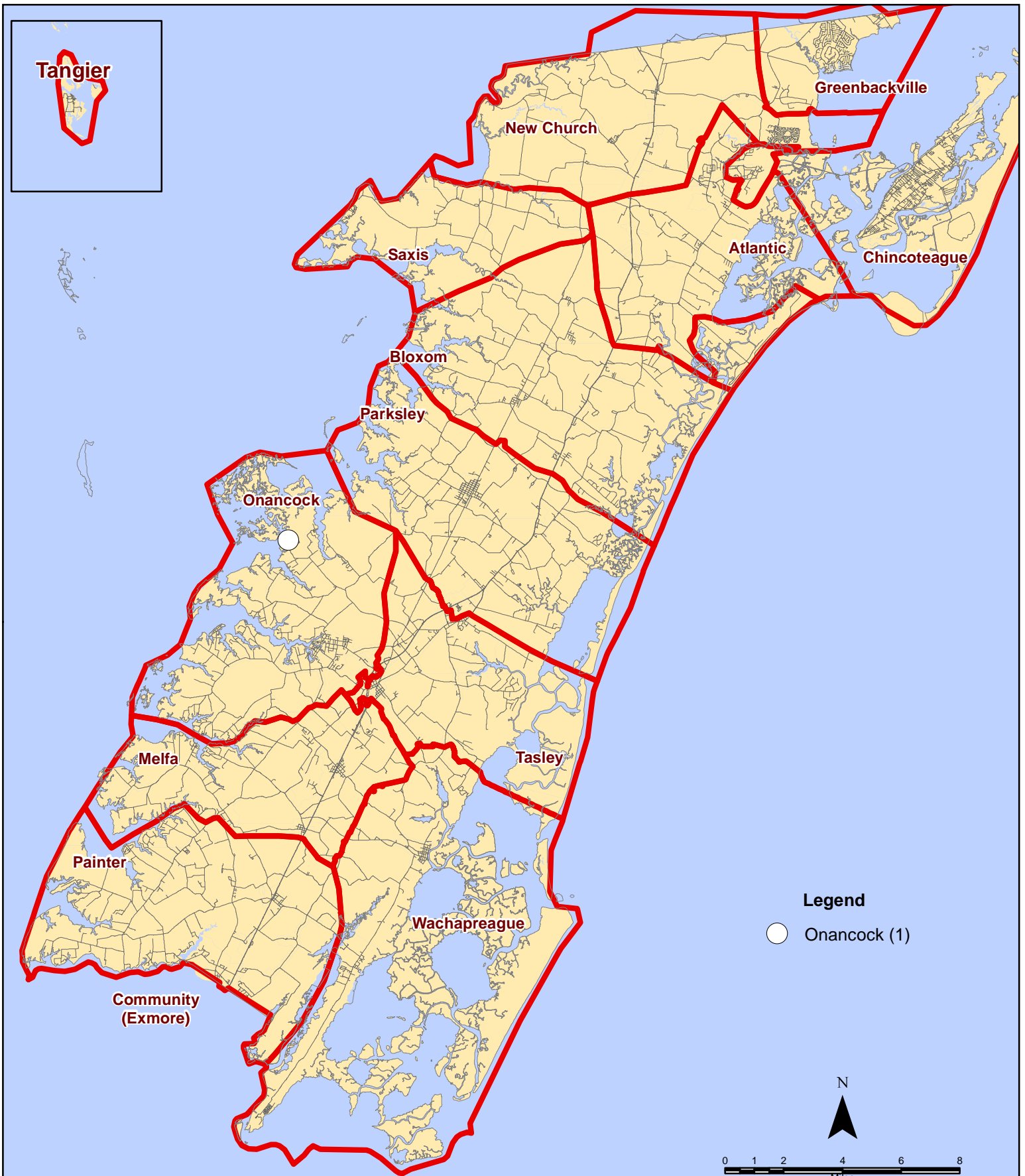
June 2022 Fire Calls By District



All points are plotted using X and Y coordinates provided by the ESVA 911 Center. Points may be plotted over one another when they are in close proximity.

Map Prepared by the Accomack County Department of Building, Planning & Economic Development using data from the ESVA 911 Center - July 11, 2022

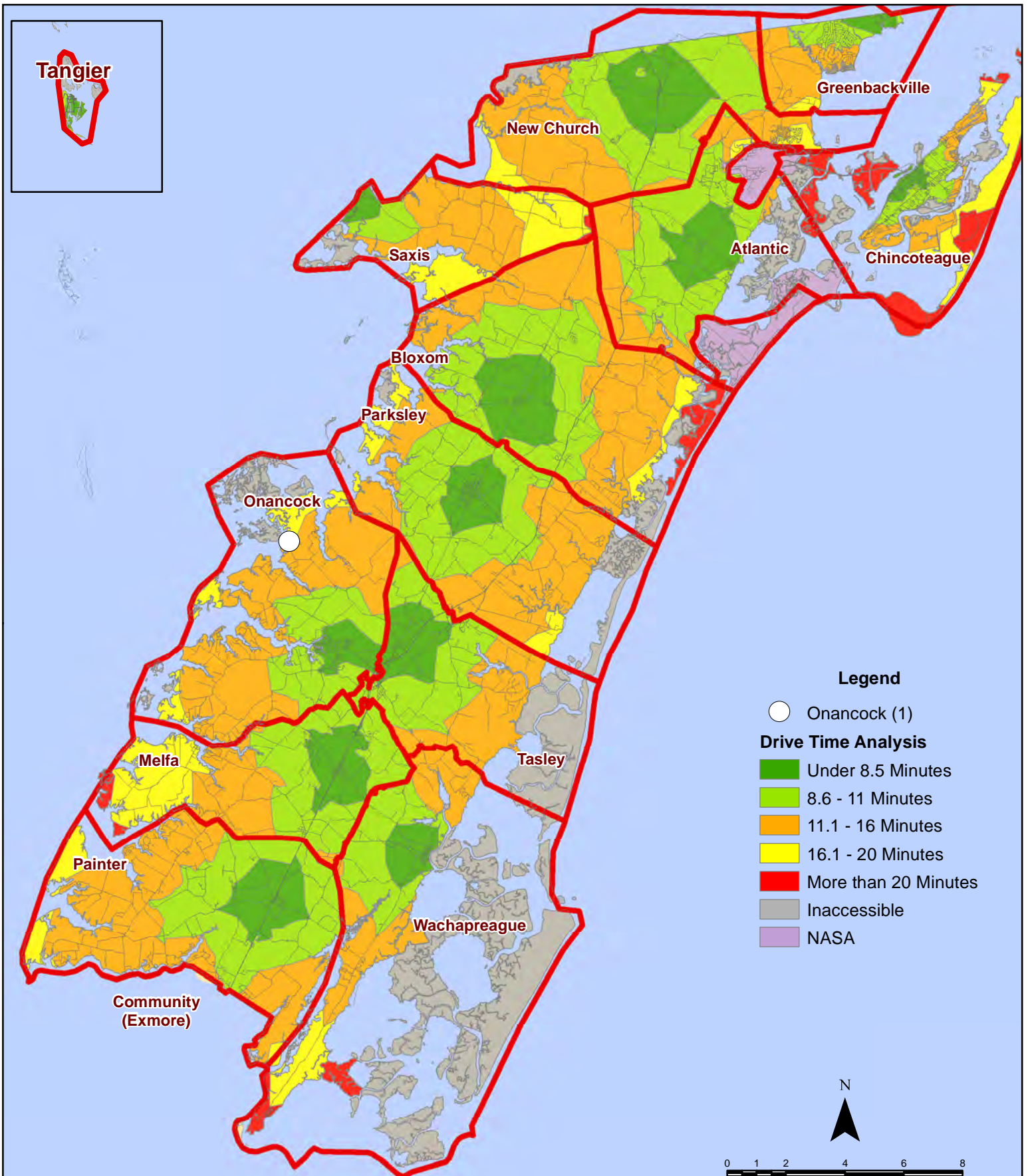
June 2022 Fire Calls With Response Time Greater Than 20 Mins.



All points are plotted using X and Y coordinates provided by the ESVA 911 Center. Points may be plotted over one another when they are in close proximity.

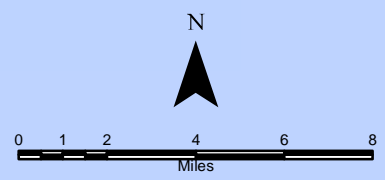
Map Prepared by the Accomack County Department of Building, Planning & Economic Development using data from the ESVA 911 Center - July 12, 2022

June 2022 Fire Calls With Response Time Greater Than 20 Mins.



Legend

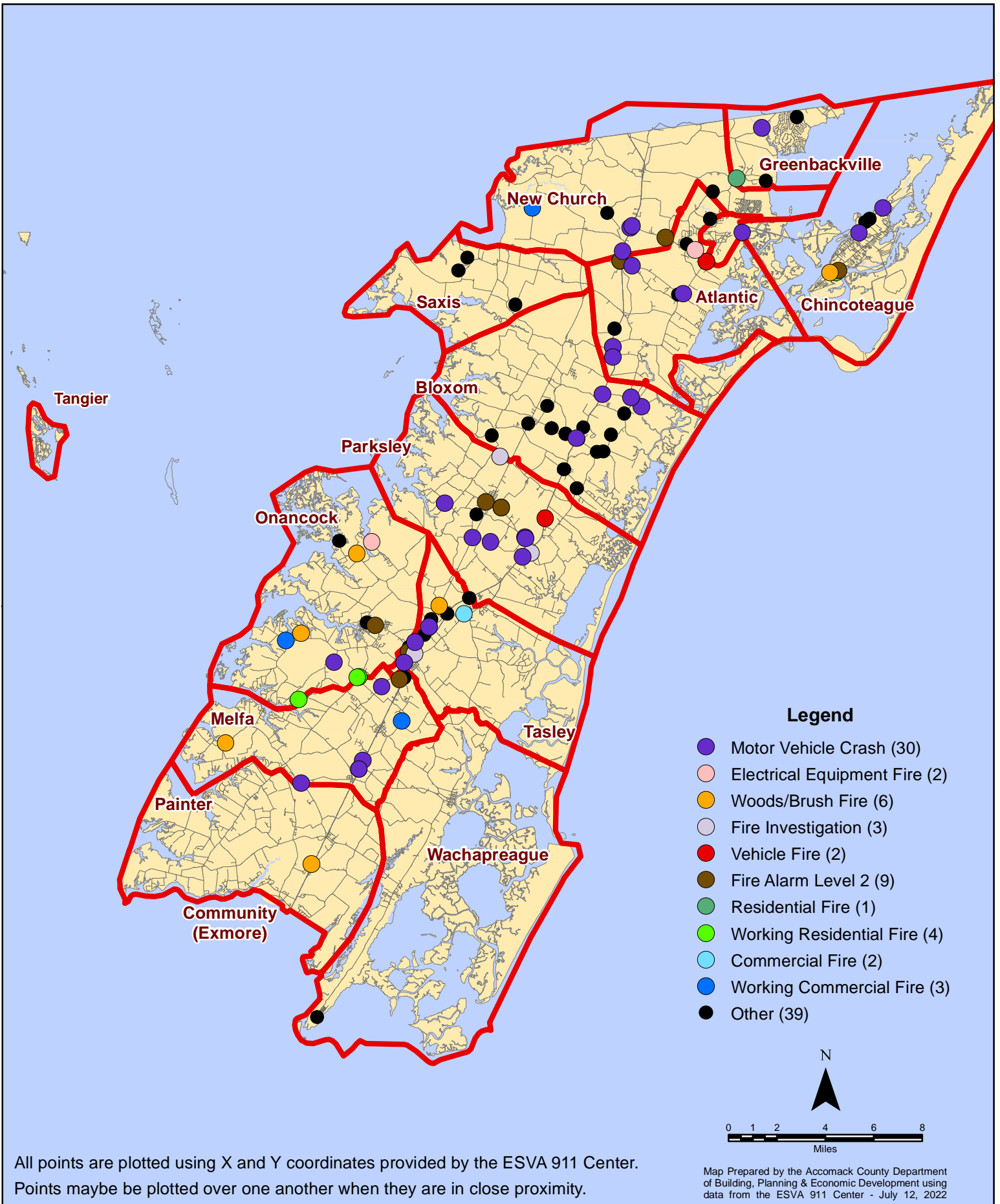
- Onancock (1)
- Drive Time Analysis**
- Under 8.5 Minutes
- 8.6 - 11 Minutes
- 11.1 - 16 Minutes
- 16.1 - 20 Minutes
- More than 20 Minutes
- Inaccessible
- NASA



All points are plotted using X and Y coordinates provided by the ESVA 911 Center. Points maybe be plotted over one another when they are in close proximity.

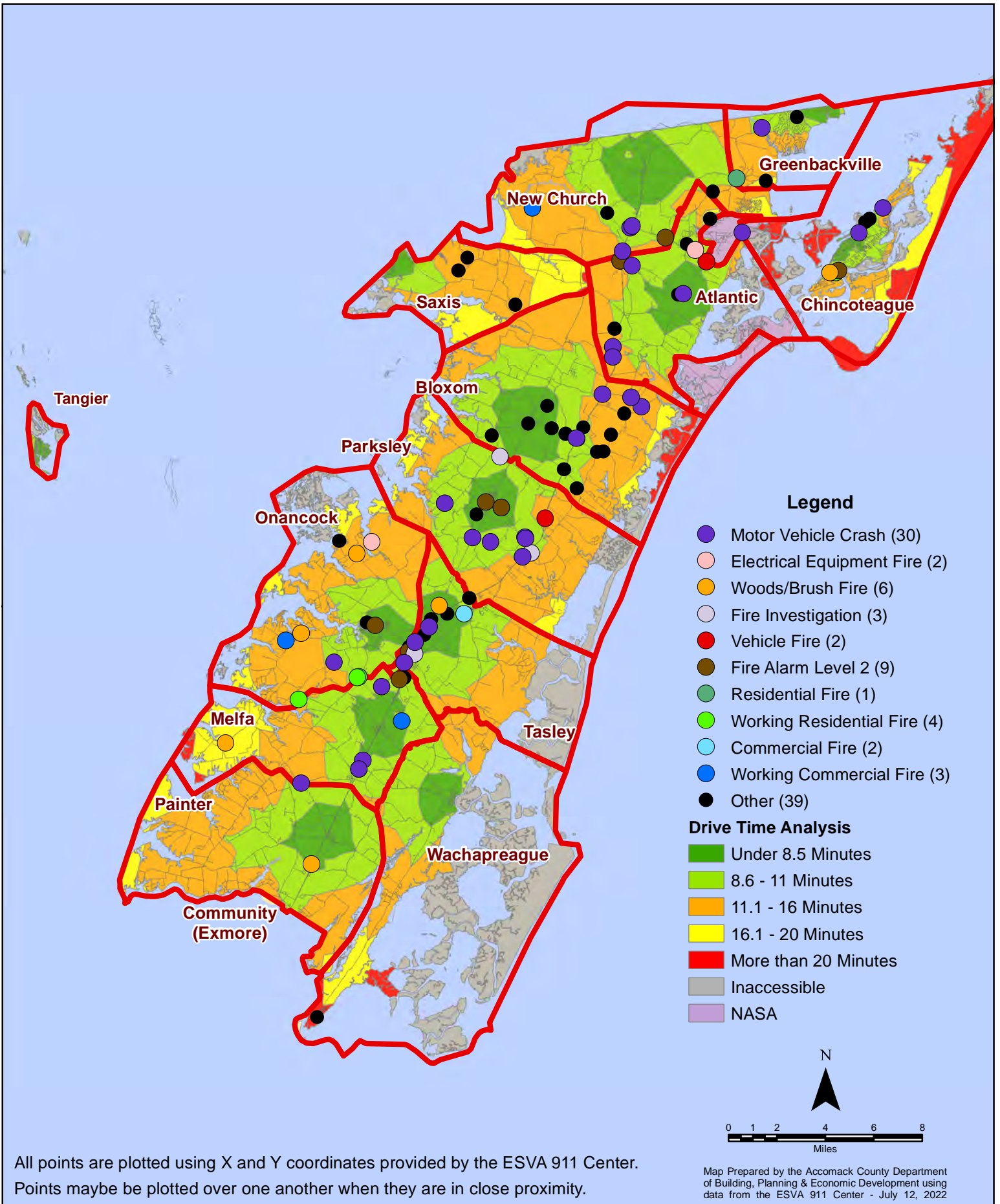
Map Prepared by the Accomack County Department of Building, Planning & Economic Development using data from the ESVA 911 Center - July 12, 2022

June 2022 Fire Calls By Type



All points are plotted using X and Y coordinates provided by the ESVA 911 Center. Points may be plotted over one another when they are in close proximity.

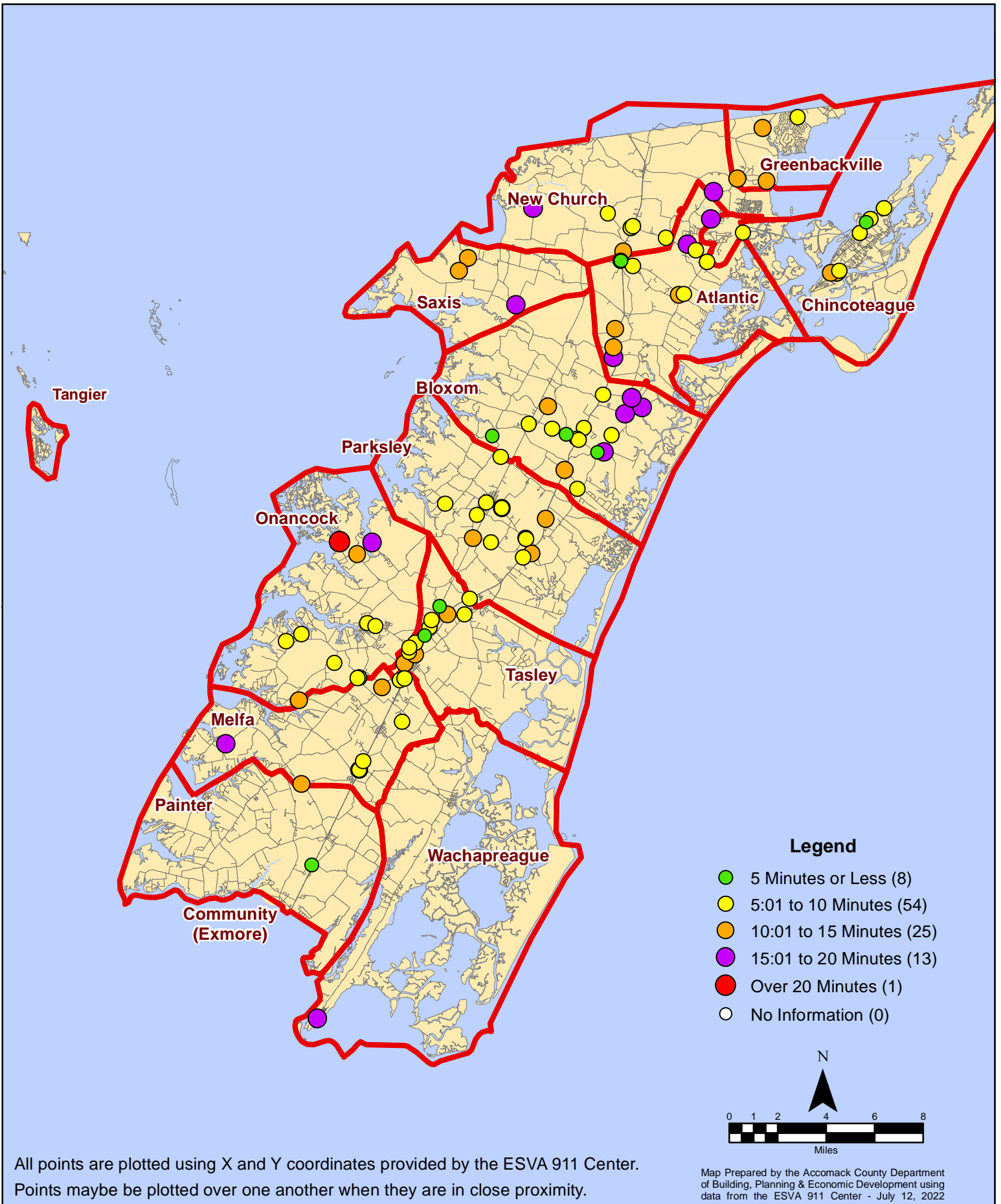
June 2022 Fire Calls By Type



All points are plotted using X and Y coordinates provided by the ESVA 911 Center. Points may be plotted over one another when they are in close proximity.

Map Prepared by the Accomack County Department of Building, Planning & Economic Development using data from the ESVA 911 Center - July 12, 2022

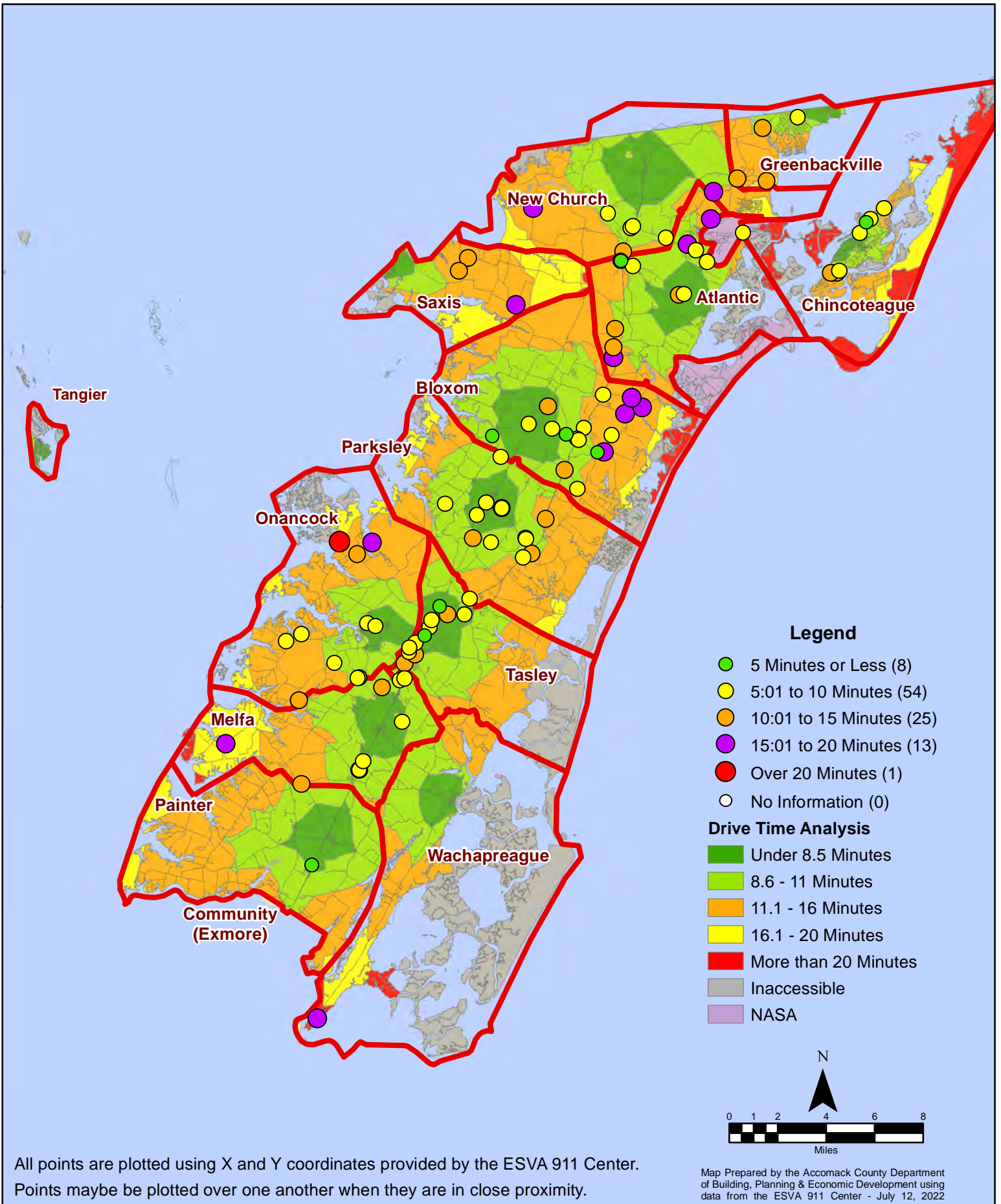
June 2022 Fire Calls By Response Time



All points are plotted using X and Y coordinates provided by the ESVA 911 Center. Points may be plotted over one another when they are in close proximity.

Map Prepared by the Accomack County Department of Building, Planning & Economic Development using data from the ESVA 911 Center - July 12, 2022

June 2022 Fire Calls By Response Time



All points are plotted using X and Y coordinates provided by the ESVA 911 Center. Points may be plotted over one another when they are in close proximity.

Map Prepared by the Accomack County Department of Building, Planning & Economic Development using data from the ESVA 911 Center - July 12, 2022