

October 2022

Fire - Performance Measure Data *					
Response District	Total Calls in District	Greater than 20 min. Response Time	Longest Response Time	Calls Handled by other agency	Overall Station Benchmark %
New Church	12	0	0:12:10	0	100.0%
Greenbackville	1	0	0:11:59	0	100.0%
Chincoteague	4	0	0:10:57	0	100.0%
Atlantic	9	0	0:13:47	0	100.0%
Saxis	0	0	0	0	#DIV/0!
Bloxom	5	0	0:18:59	2	100.0%
Parksley	22	0	0:15:07	0	100.0%
Tasley	10	0	0:12:35	3	100.0%
Onancock	7	0	0:17:44	2	100.0%
Melfa	8	0	0:17:52	6	100.0%
Wachapreague	0	0	0	0	#DIV/0!
Painter	9	0	0:11:26	1	100.0%
Tangier	0	0	0	0	#DIV/0!
System Totals	87	0	0:18:59	14	100.0%

EMS - Performance Measure Data						
Response District	Total Calls in District	Greater than 20 min. Response Time	Longest Response Time	Calls Handled by other agency	Station Benchmark Compliance %	Overall Station Reliability %
Greenbackville	22	8	0:24:06	17	63.6%	22.7%
Chincoteague	77	0	0:18:49	5	100.0%	93.5%
Saxis	10	0	0:12:05	3	100.0%	70.0%
Bloxom	43	2	0:25:23	32	95.3%	25.6%
Parksley	118	1	0:21:39	1	99.2%	99.2%
Onancock	81	0	0:16:54	5	100.0%	93.8%
Melfa	46	0	0:14:30	33	100.0%	28.3%
Wachapreague (Painter)	40	1	0:21:17	4	97.5%	90.0%
Oak Hall	100	2	0:31:51	5	98.0%	95.0%
Tangier	13	1	0:20:58	0	92.3%	100.0%
Community (Exmore)	13	1	0:21:23	4	92.3%	69.2%
System Totals	563	16	0:31:51	109	97.2%	80.6%

	Station Giving Aid															
	Greenbackville	Chincoteague	Saxis	Bloxom	Parksley	Onancock	Melfa	Wachapreague/Painter	Oak Hall	Community (Exmore)	Northampton	Wallops	NORS	2nd Call	3rd Call	
Greenbackville													17			
Chincoteague													5			
Saxis													3			
Bloxom						24							8			
Parksley							1								1	
Onancock					4		1						1	3	1	
Melfa							15	18					31	2		
Wachapreague (Painter)							1	1		2			3	1		
Oak Hall		2	1	1	1								0	3	2	
Community (Exmore)							1	3					3	1		
Northampton Co.																
Wallops																
Totals	0	2	1	1	29	18	2	21	33	2	0	0	91	12	6	

Station Receiving Aid

Hospital Destination by Unit	Riverside - Shore Memorial				PRMC / Tidal Health		Other
	1	2	3	4	PRMC	Tidal Health	
Greenbackville	1	2					1
Chincoteague	27	24					
Saxis	5	2					
Bloxom	6	1					
Parksley	108	1					
Onancock	74						
Melfa	6						
Wachapreague (Painter)	43						2
Oak Hall	50	30					2
Wallops							1
Totals	320	60	6	6			

Benchmark = The Accomack County Board of Supervisors established a 20 minute standard for emergency response.

NORS = No Response by station or the call was handled by another station or agency.

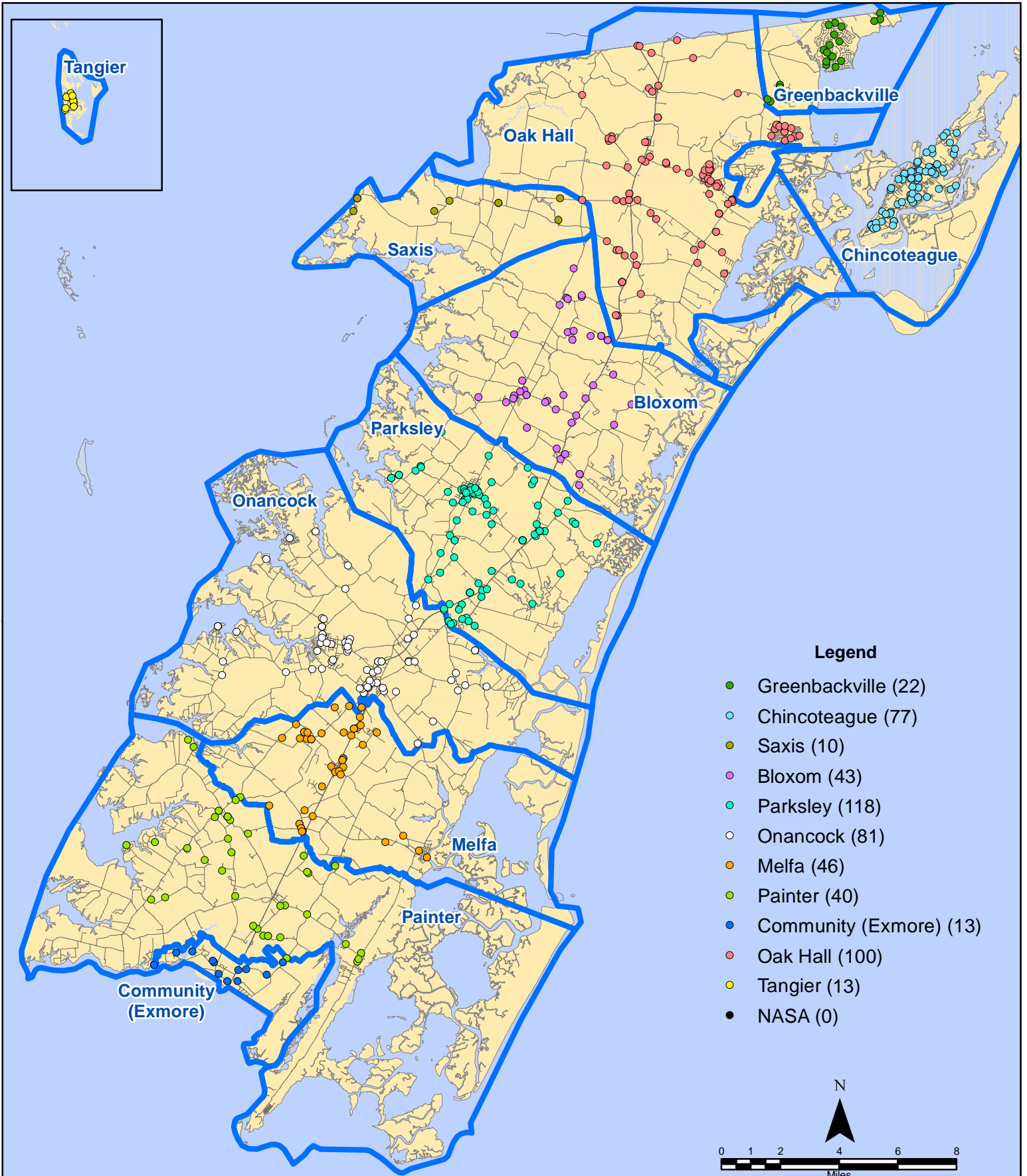
2nd Call = 2nd ambulance call received while first ambulance was on another call.

3rd Call = 3rd ambulance call received while first & second ambulances were on other calls.

* This data excludes F1 Med (Medical Assist) calls in the Fire Data.

This information was prepared using data supplied by the Eastern Shore of Virginia 911 Center. This information is original incident data only and may not be representative of all units and/or stations who responded to an incident.

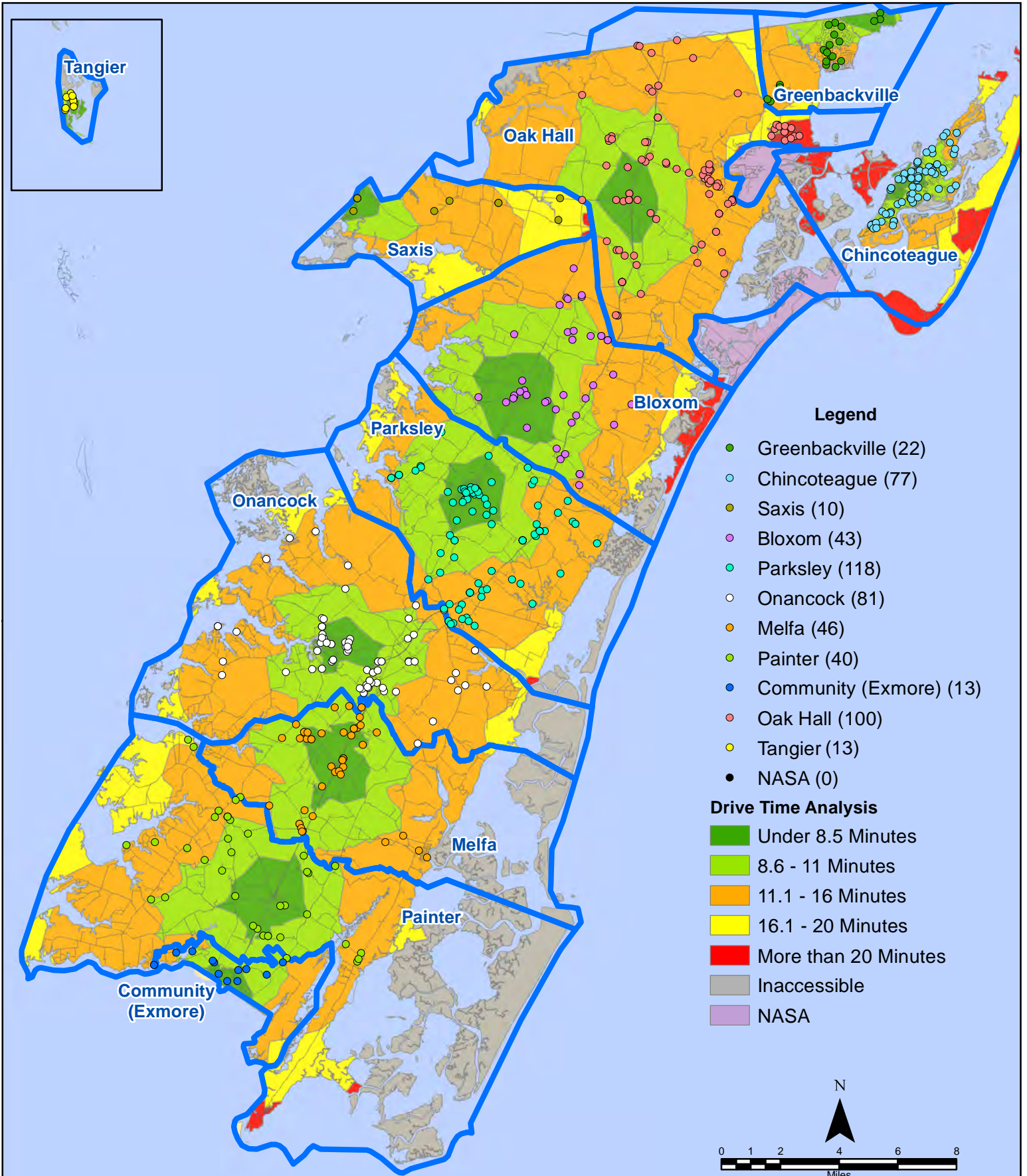
October 2022 EMS Calls By District



All points are plotted using X and Y coordinates provided by the ESVA 911 Center.
Points may be plotted over one another when they are in close proximity.

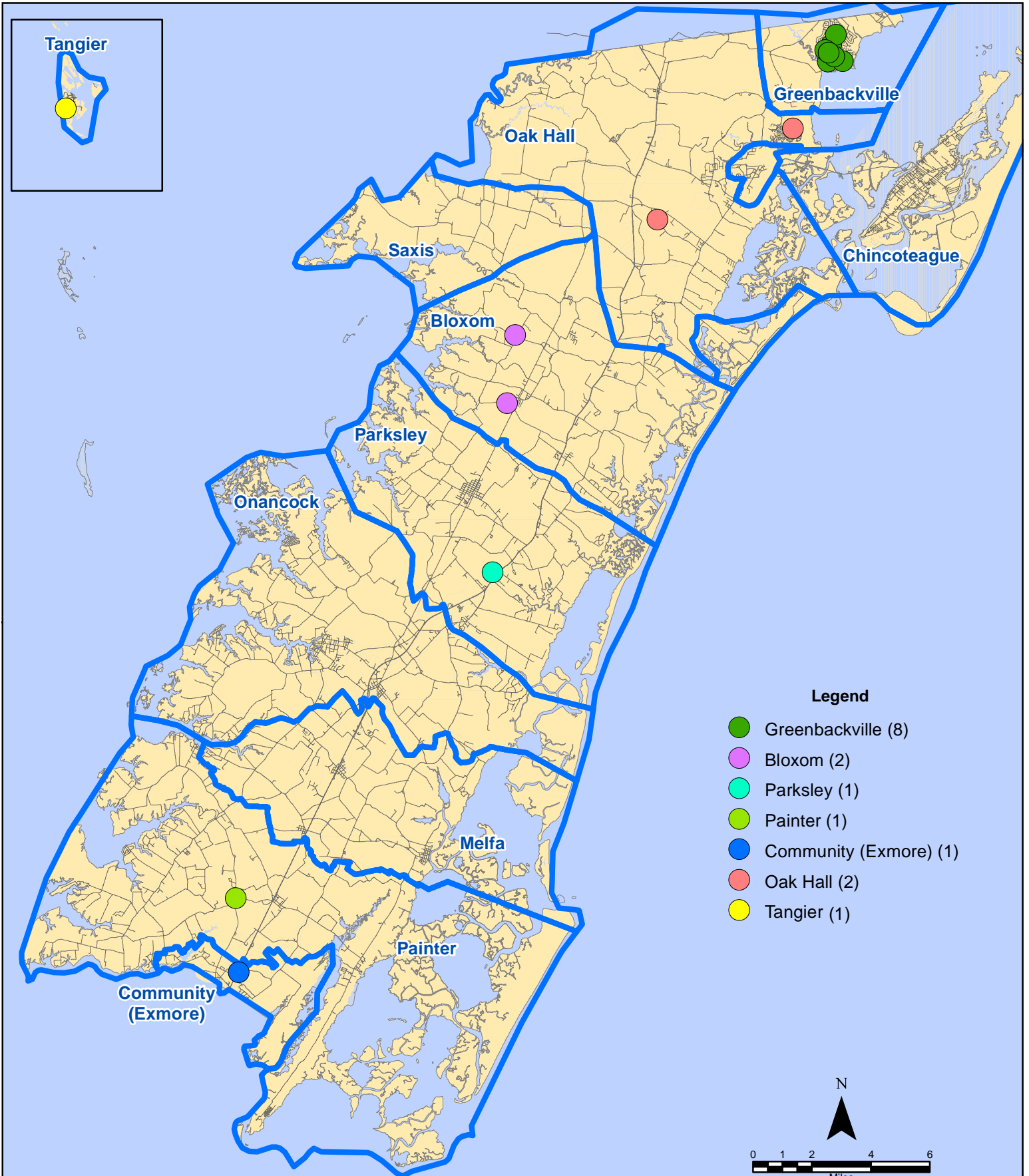
Map Prepared by the Accomack County Department of Building, Planning & Economic Development using data from the ESVA 911 Center - November 14, 2022

October 2022 EMS Calls By District



All points are plotted using X and Y coordinates provided by the ESVA 911 Center. Points may be plotted over one another when they are in close proximity.

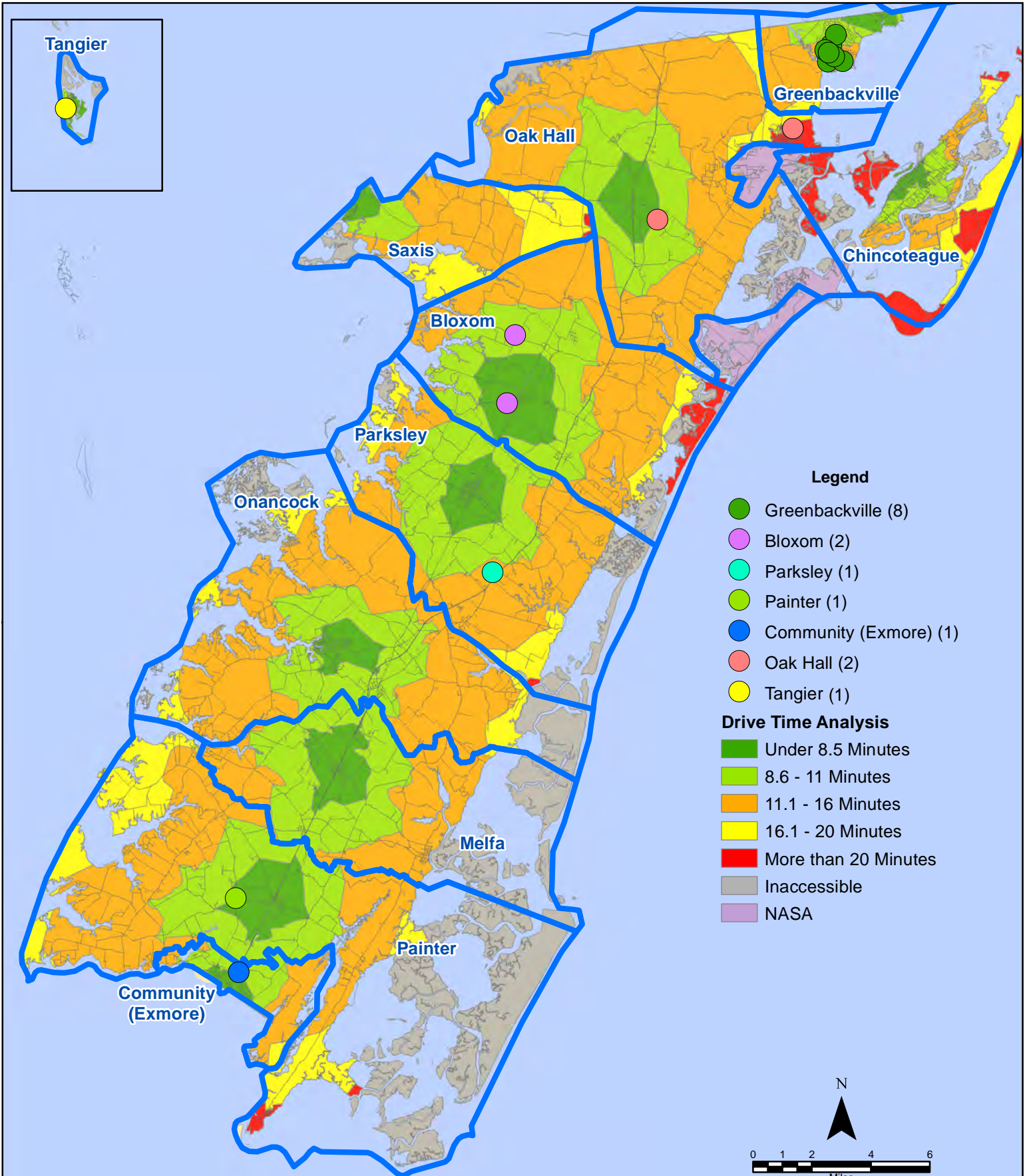
October 2022 EMS Calls With Response Time Greater Than 20 Mins.



All points are plotted using X and Y coordinates provided by the ESVA 911 Center. Points may be plotted over one another when they are in close proximity.

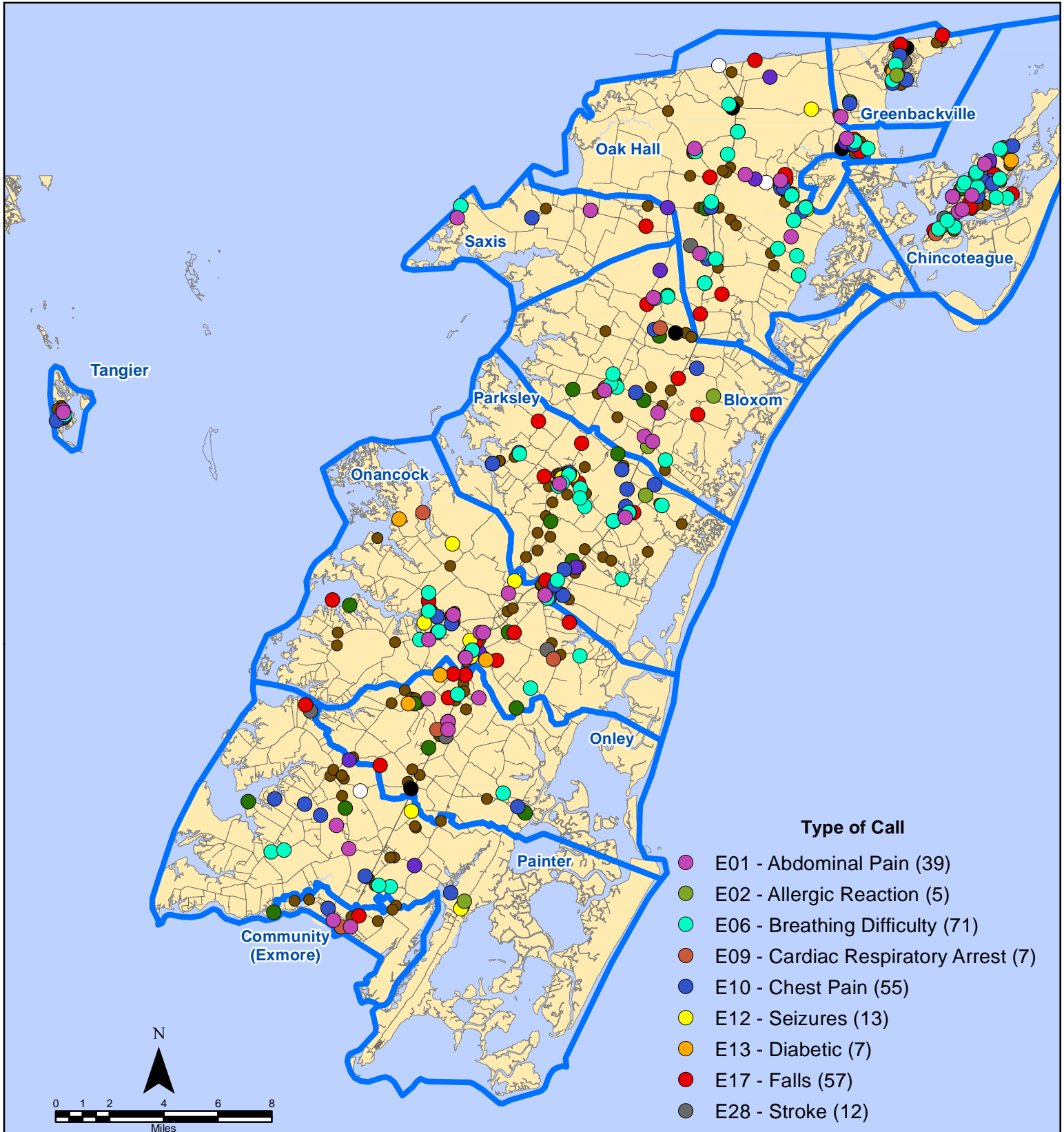
Map Prepared by the Accomack County Department of Building, Planning & Economic Development using data from the ESVA 911 Center - November 14, 2022

October 2022 EMS Calls With Response Time Greater Than 20 Mins.



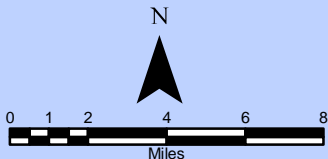
All points are plotted using X and Y coordinates provided by the ESVA 911 Center. Points may be plotted over one another when they are in close proximity.

October 2022 EMS Calls By Type



Type of Call

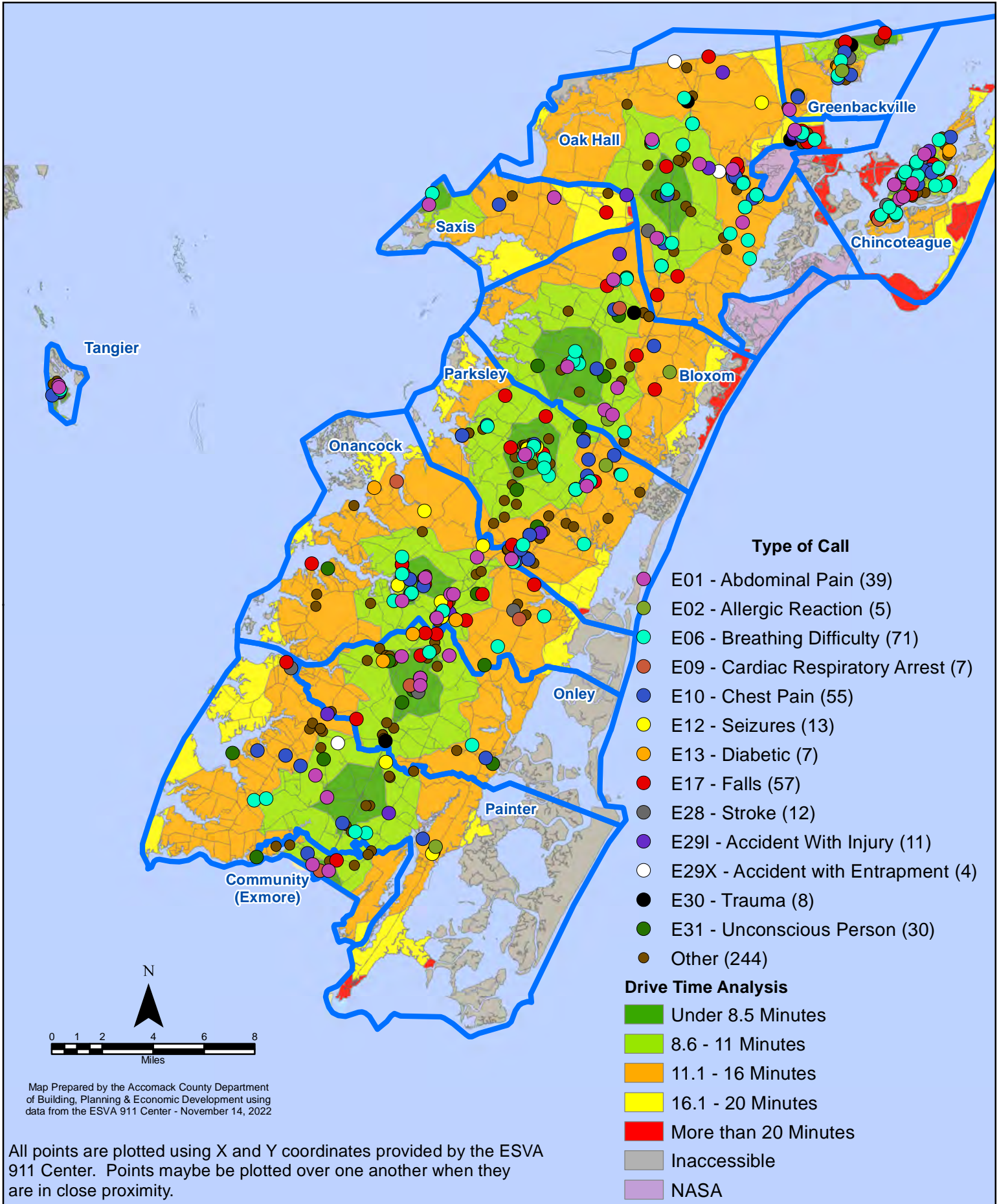
- E01 - Abdominal Pain (39)
- E02 - Allergic Reaction (5)
- E06 - Breathing Difficulty (71)
- E09 - Cardiac Respiratory Arrest (7)
- E10 - Chest Pain (55)
- E12 - Seizures (13)
- E13 - Diabetic (7)
- E17 - Falls (57)
- E28 - Stroke (12)
- E29I - Accident With Injury (11)
- E29X - Accident with Entrapment (4)
- E30 - Trauma (8)
- E31 - Unconscious Person (30)
- Other (244)



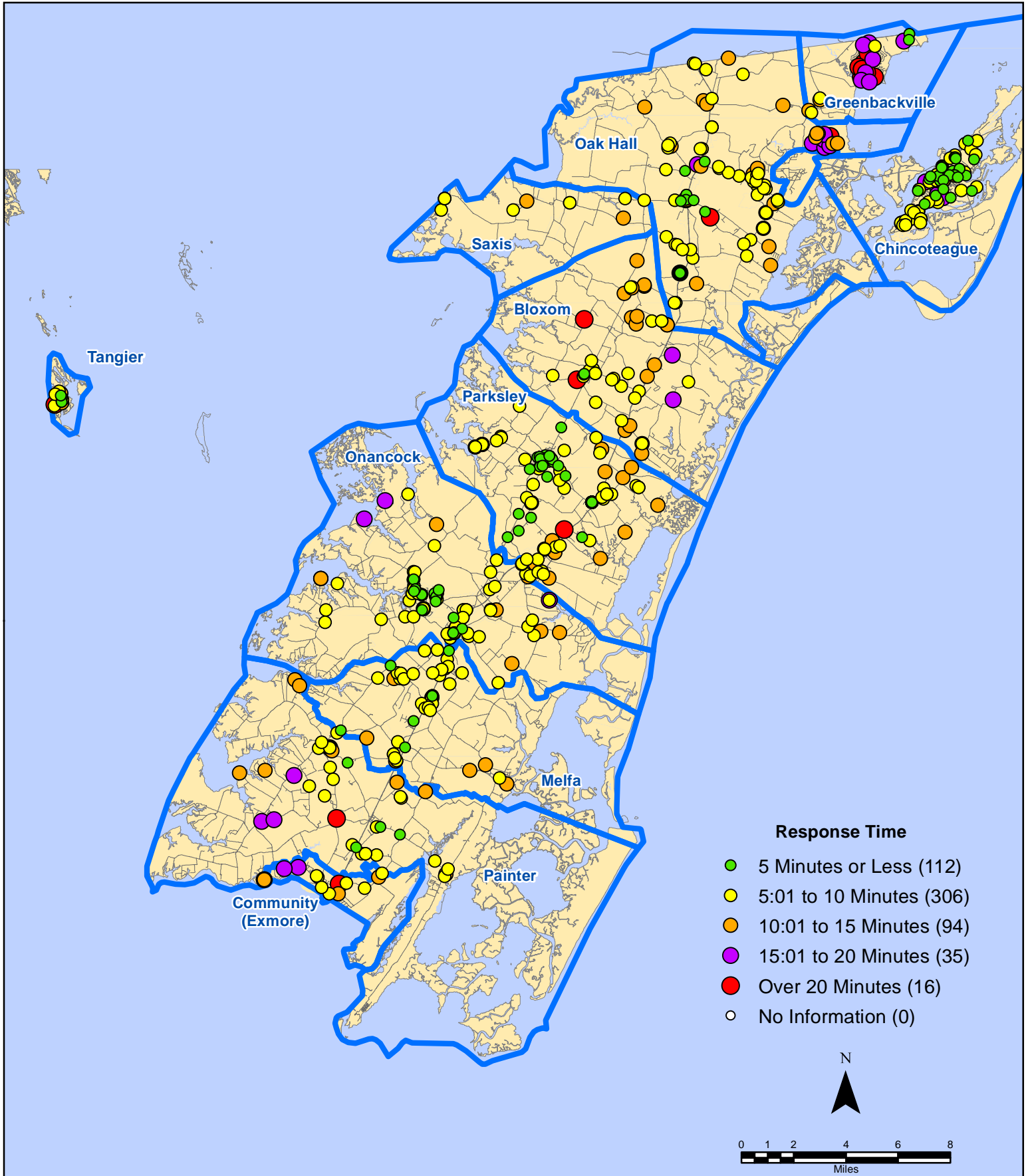
Map Prepared by the Accomack County Department of Building, Planning & Economic Development using data from the ESVA 911 Center - November 14, 2022

All points are plotted using X and Y coordinates provided by the ESVA 911 Center. Points may be plotted over one another when they are in close proximity.

October 2022 EMS Calls By Type



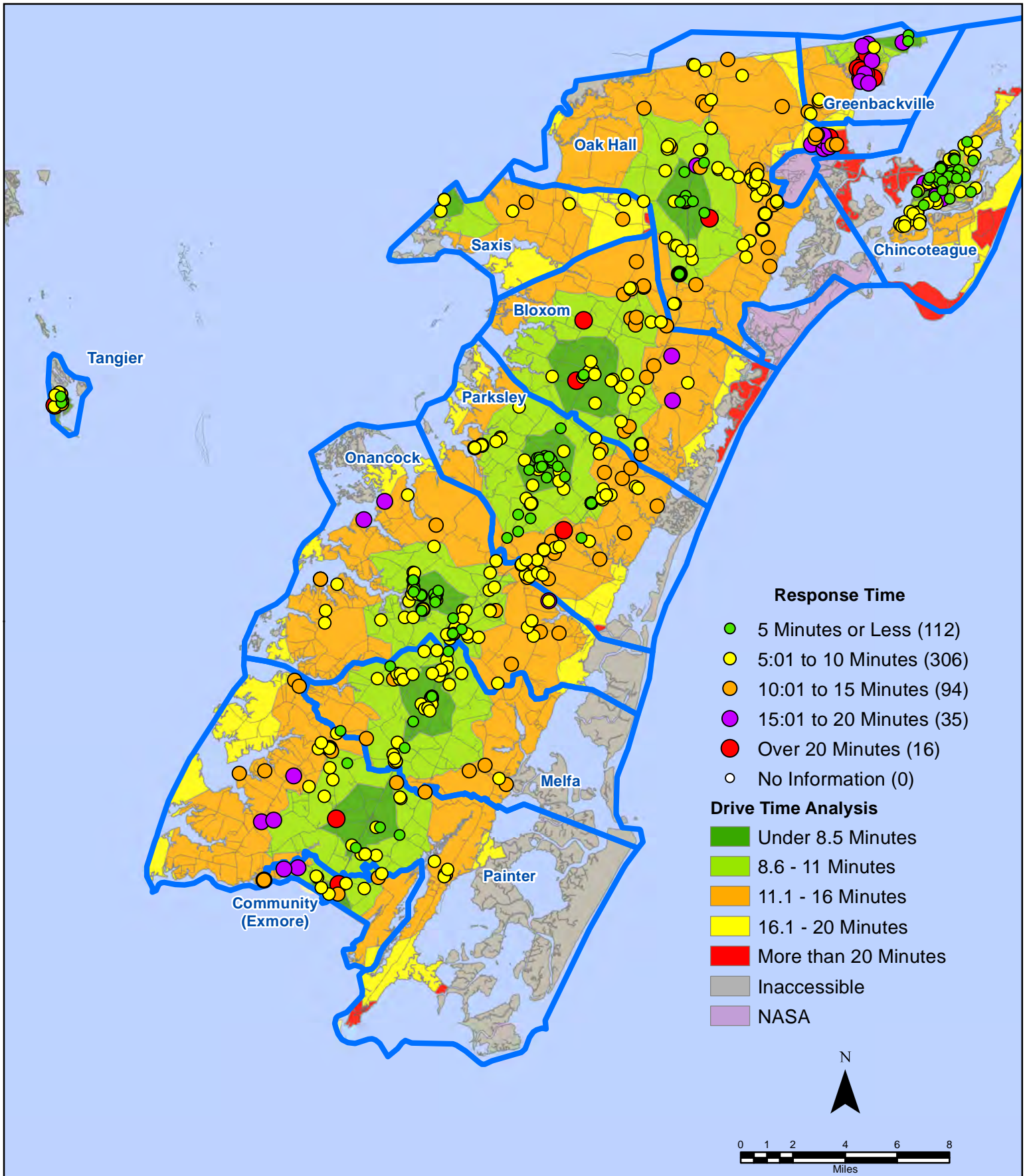
October 2022 EMS Calls By Response Time



All points are plotted using X and Y coordinates provided by the ESVA 911 Center. Points may be plotted over one another when they are in close proximity.

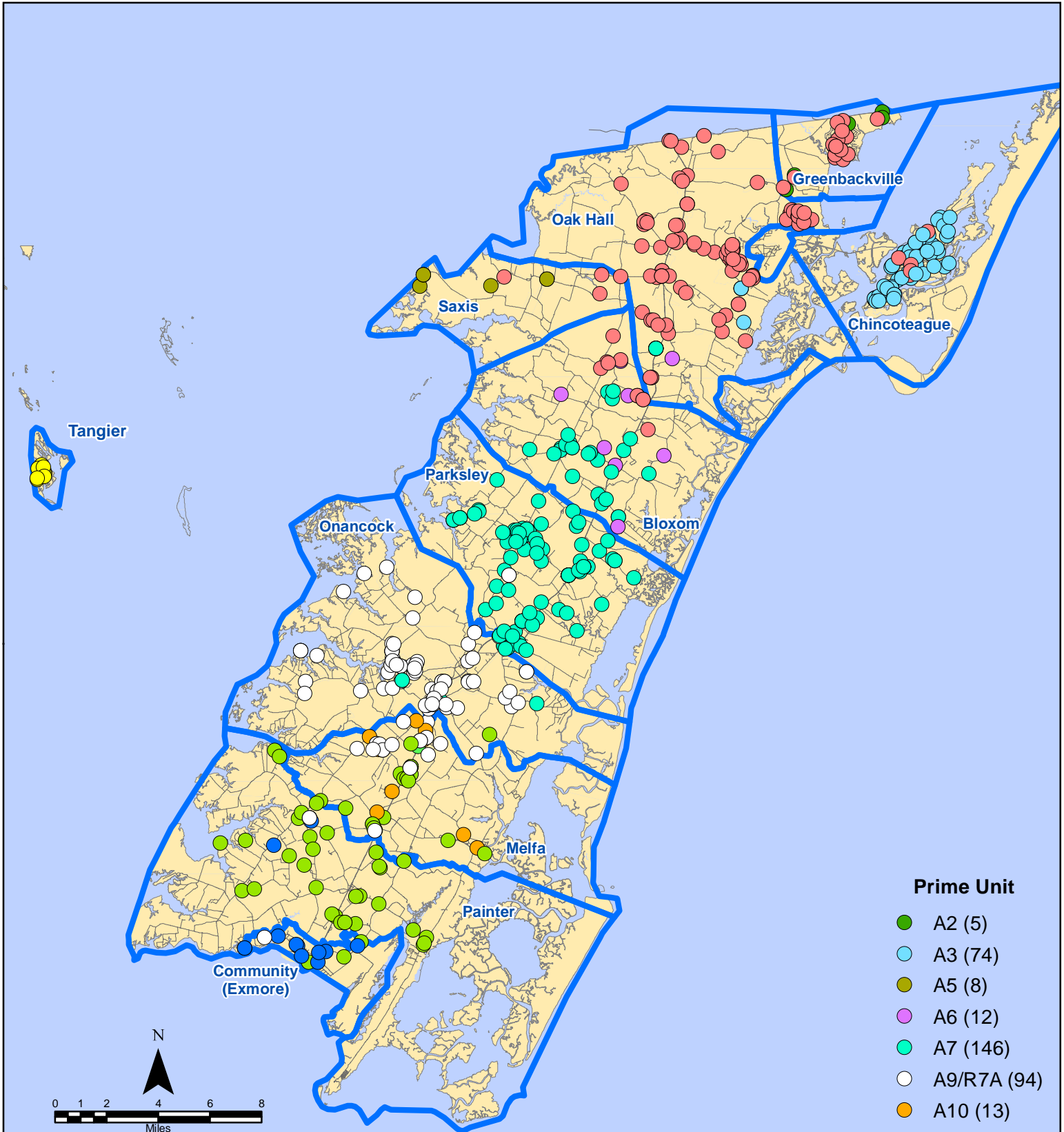
Map Prepared by the Accomack County Department of Building, Planning & Economic Development using data from the ESVA 911 Center - November 14, 2022

October 2022 EMS Calls By Response Time



All points are plotted using X and Y coordinates provided by the ESVA 911 Center. Points may be plotted over one another when they are in close proximity.

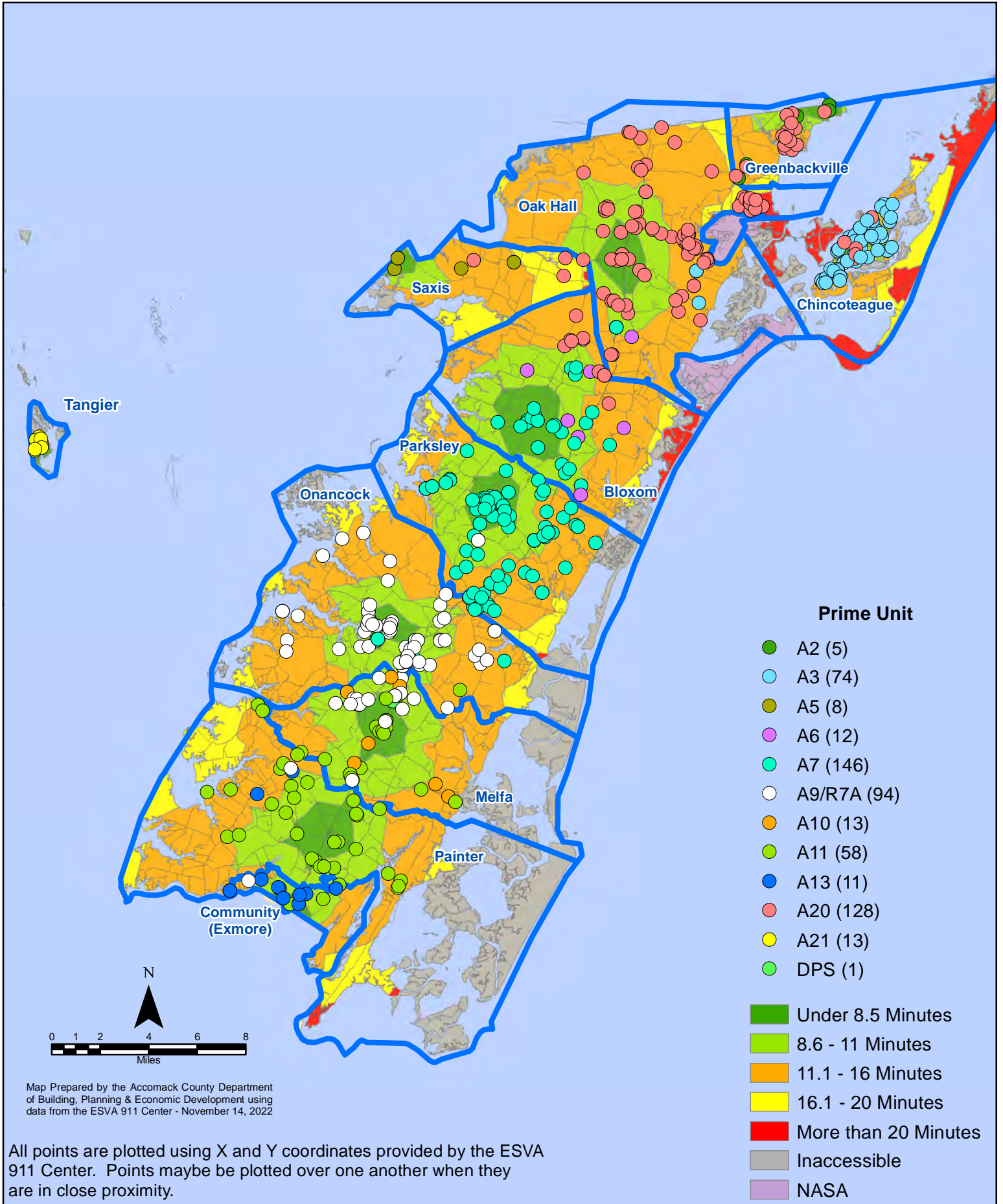
October 2022 EMS Calls By Prime Unit



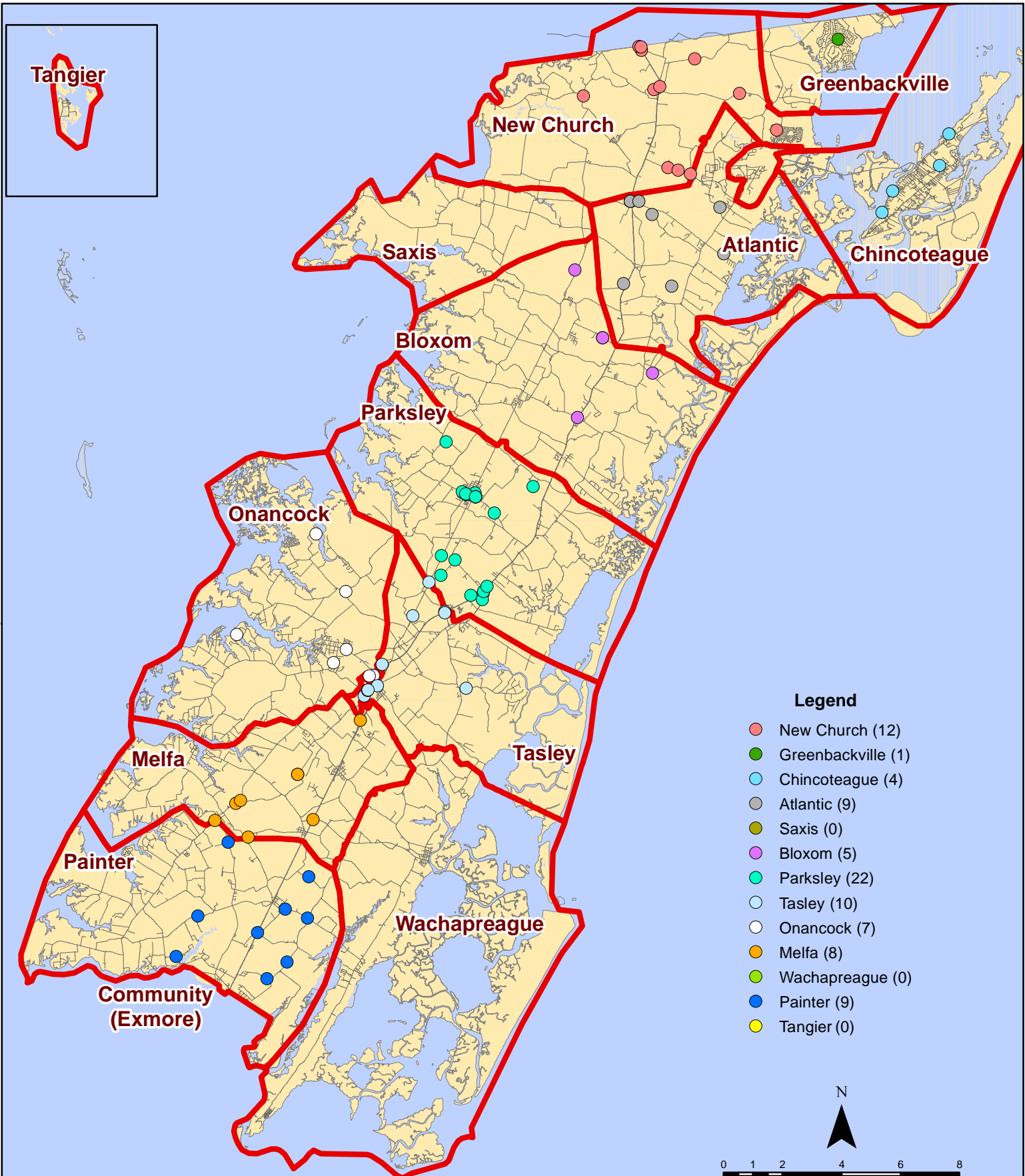
Map Prepared by the Accomack County Department of Building, Planning & Economic Development using data from the ESVA 911 Center - November 14, 2022

All points are plotted using X and Y coordinates provided by the ESVA 911 Center. Points may be plotted over one another when they are in close proximity.

October 2022 EMS Calls By Prime Unit



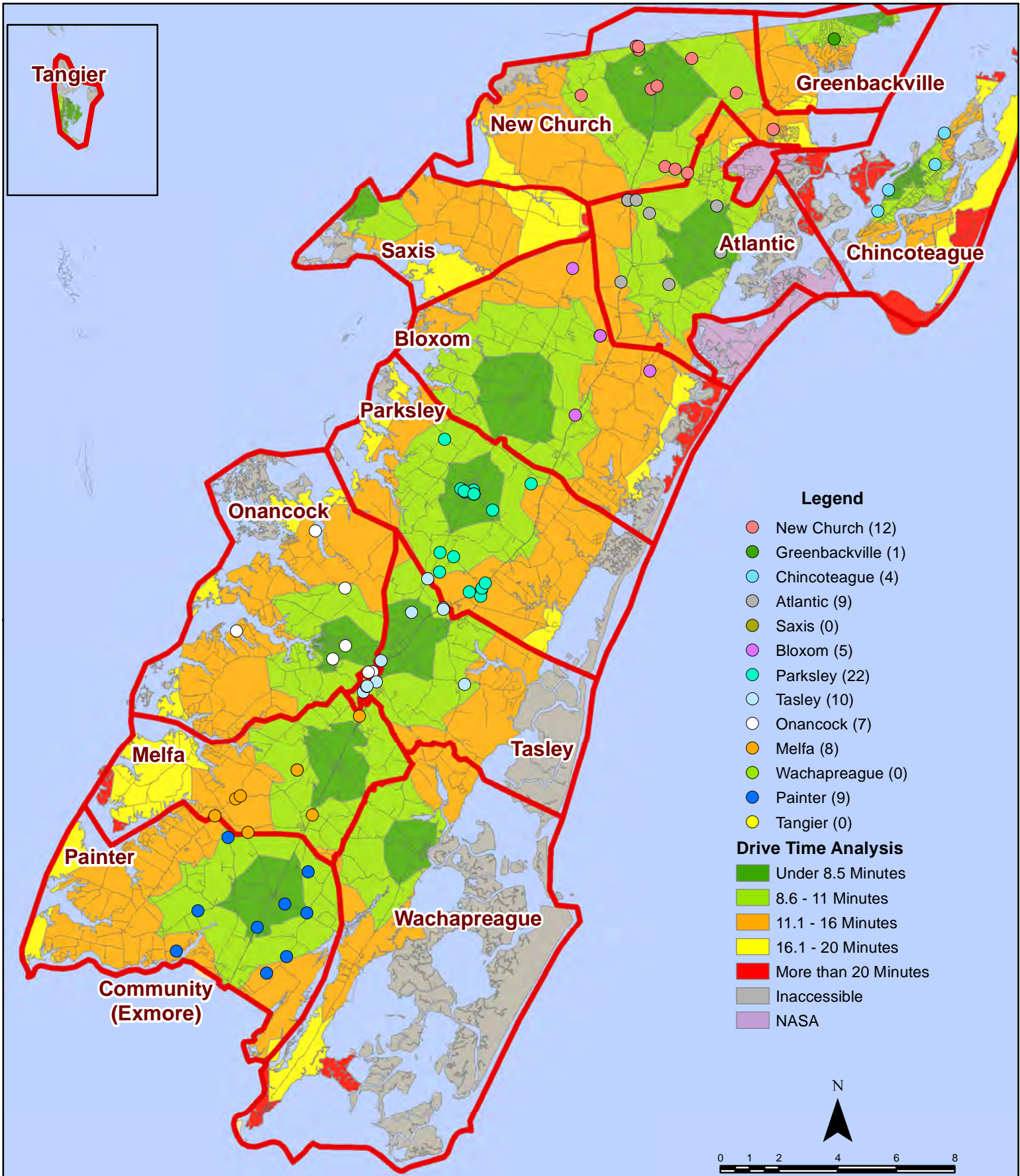
October 2022 Fire Calls By District



All points are plotted using X and Y coordinates provided by the ESVA 911 Center. Points may be plotted over one another when they are in close proximity.

Map Prepared by the Accomack County Department of Building, Planning & Economic Development using data from the ESVA 911 Center - November 10, 2022

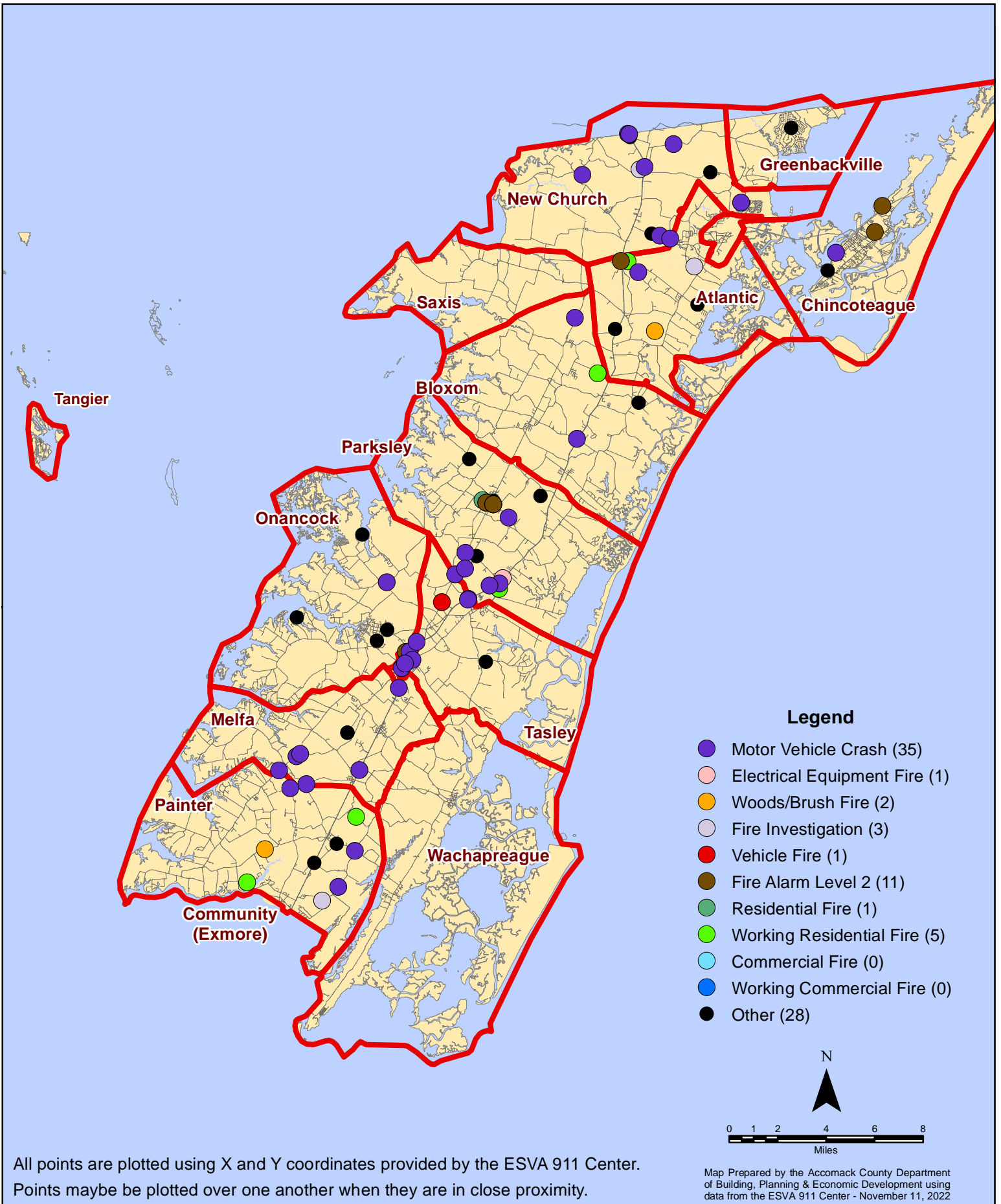
October 2022 Fire Calls By District



All points are plotted using X and Y coordinates provided by the ESVA 911 Center. Points may be plotted over one another when they are in close proximity.

Map Prepared by the Accomack County Department of Building, Planning & Economic Development using data from the ESVA 911 Center - November 10, 2022

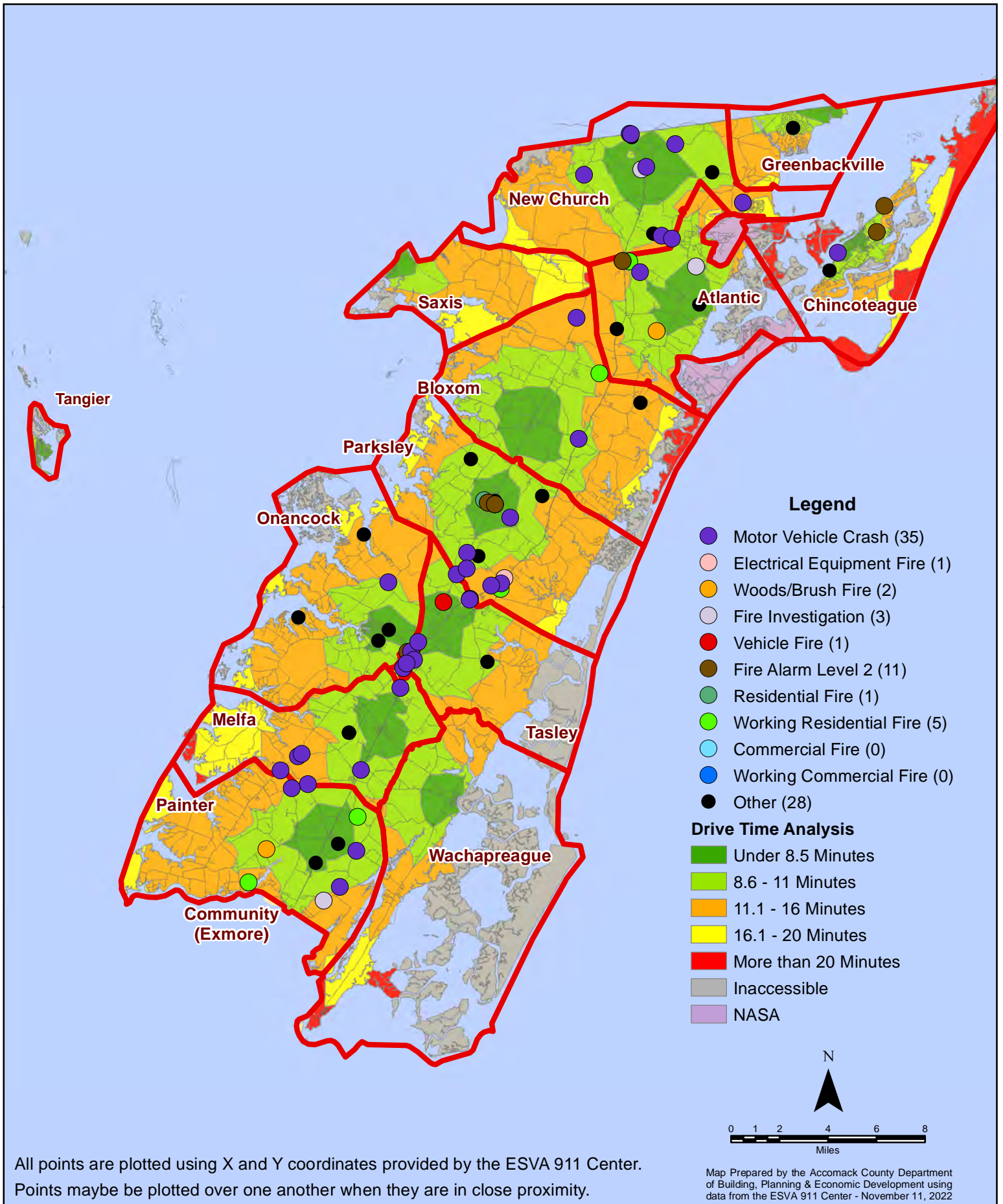
October 2022 Fire Calls By Type



All points are plotted using X and Y coordinates provided by the ESVA 911 Center. Points may be plotted over one another when they are in close proximity.

Map Prepared by the Accomack County Department of Building, Planning & Economic Development using data from the ESVA 911 Center - November 11, 2022

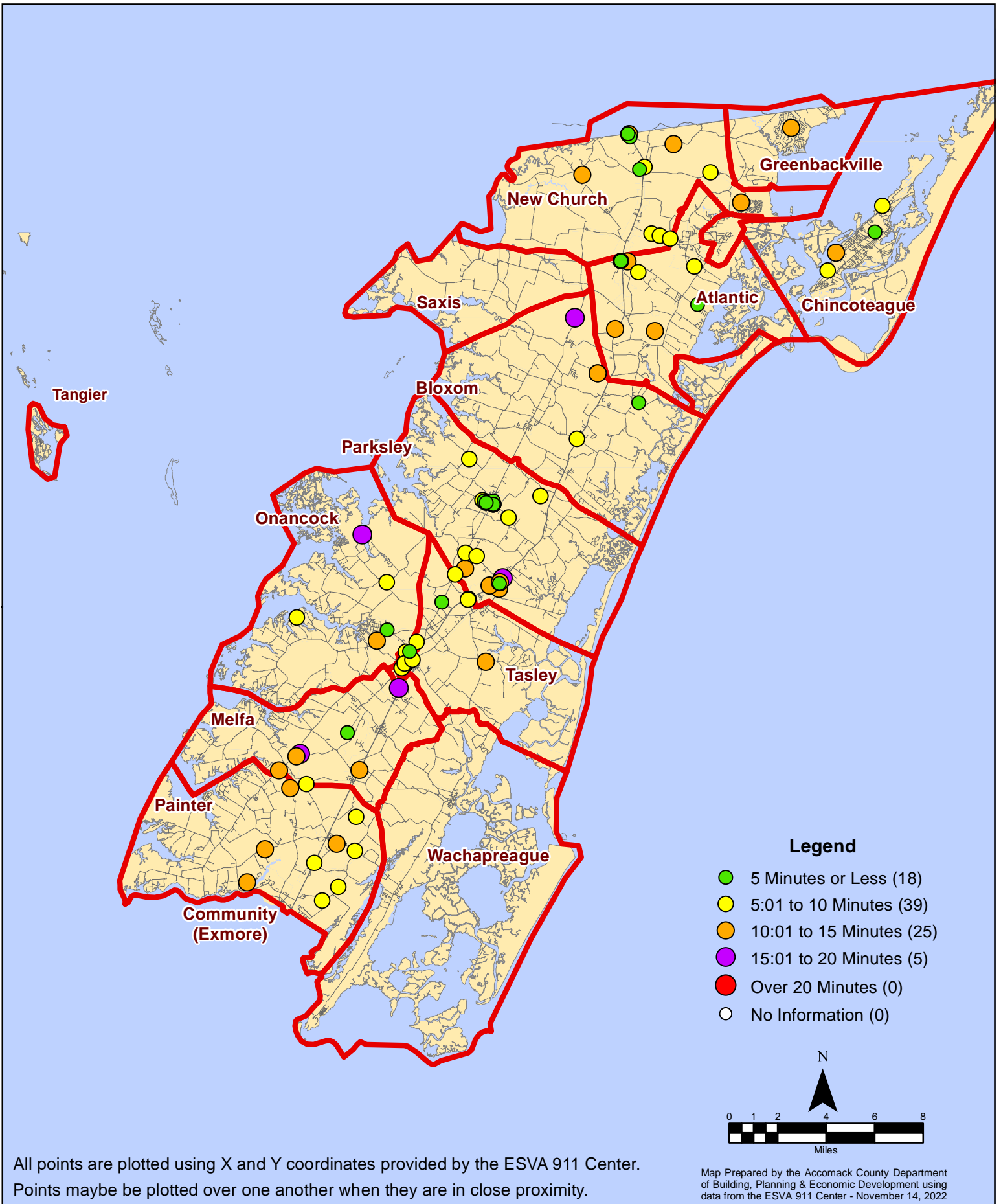
October 2022 Fire Calls By Type



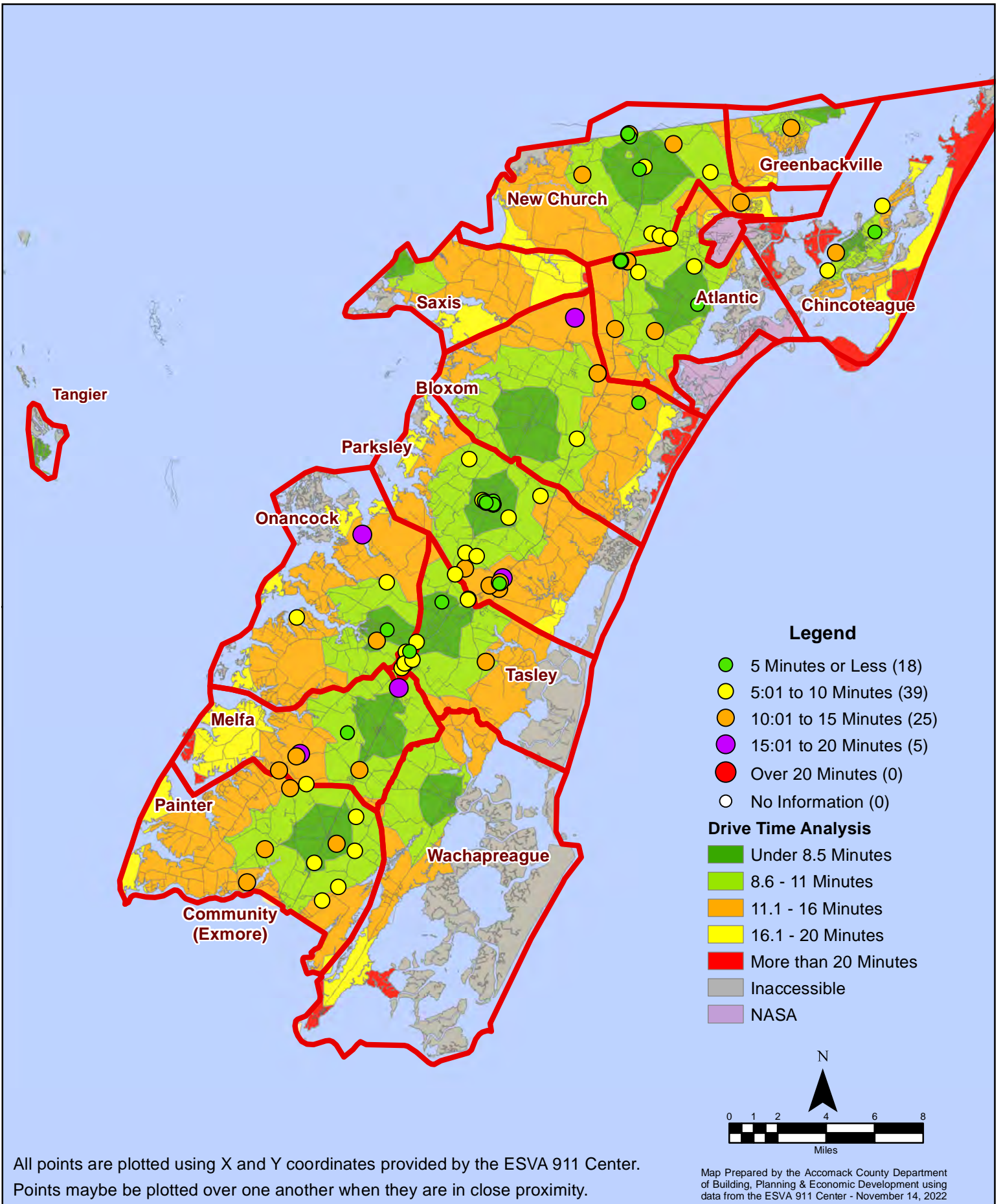
All points are plotted using X and Y coordinates provided by the ESVA 911 Center. Points may be plotted over one another when they are in close proximity.

Map Prepared by the Accomack County Department of Building, Planning & Economic Development using data from the ESVA 911 Center - November 11, 2022

October 2022 Fire Calls By Response Time



October 2022 Fire Calls By Response Time



All points are plotted using X and Y coordinates provided by the ESVA 911 Center. Points may be plotted over one another when they are in close proximity.

Map Prepared by the Accomack County Department of Building, Planning & Economic Development using data from the ESVA 911 Center - November 14, 2022