

# November 2022

Fire - Performance Measure Data *					
Response District	Total Calls in District	Greater than 20 min. Response Time	Longest Response Time	Calls Handled by other agency	Overall Station Benchmark %
New Church	8	0	0:12:22	0	100.0%
Greenbackville	1	0	0:15:11	0	100.0%
Chincoteague	4	0	0:12:33	0	100.0%
Atlantic	7	0	0:11:13	1	100.0%
Saxis	6	0	0:16:00	0	100.0%
Bloxom	7	0	0:16:43	2	100.0%
Parksley	18	0	0:17:23	2	100.0%
Tasley	5	0	0:12:55	2	100.0%
Onancock	16	1	0:20:38	1	93.8%
Melfa	11	3	0:21:55	11	72.7%
Wachapreague	1	0	0:12:39	0	100.0%
Painter	12	0	0:19:05	2	100.0%
Tangier					#DIV/0!
<b>System Totals</b>	<b>96</b>	<b>4</b>	<b>0:21:55</b>	<b>21</b>	<b>95.8%</b>

EMS - Performance Measure Data						
Response District	Total Calls in District	Greater than 20 min. Response Time	Longest Response Time	Calls Handled by other agency	Station Benchmark Compliance %	Overall Station Reliability %
Greenbackville	37	7	0:24:26	27	81.1%	27.0%
Chincoteague	67	2	0:47:22	1	97.0%	98.5%
Saxis	9	0	0:13:36	0	100.0%	100.0%
Bloxom	39	0	0:18:11	28	100.0%	28.2%
Parksley	125	1	0:30:38	1	99.2%	99.2%
Onancock	90	2	0:23:57	6	97.8%	93.3%
Melfa	61	0	0:17:34	40	100.0%	34.4%
Wachapreague (Painter)	42	0	0:17:52	1	100.0%	97.6%
Oak Hall	66	0	0:19:47	3	100.0%	95.5%
Tangier	4	1	0:25:17	0	75.0%	100.0%
Community (Exmore)	12	0	0:11:04	3	100.0%	75.0%
<b>System Totals</b>	<b>552</b>	<b>13</b>	<b>0:47:22</b>	<b>110</b>	<b>97.6%</b>	<b>80.1%</b>

EMS Mutual Aid Data															
	Station Giving Aid														
	Greenbackville	Chincoteague	Saxis	Bloxom	Parksley	Onancock	Melfa	Wachapreague/Painter	Oak Hall	Community (Exmore)	Northampton	Wallops			
Greenbackville									27			27			
Chincoteague			1											1	
Saxis															
Bloxom				25					3				26	2	
Parksley			1										1		
Onancock				3			3						3	3	
Melfa				1	16		23						35	5	
Wachapreague (Painter)							1							1	
Oak Hall		1		1	1								1		2
Community (Exmore)								3					3		
Northampton Co.															
Wallops															
<b>Totals</b>	<b>0</b>	<b>1</b>	<b>0</b>	<b>3</b>	<b>30</b>	<b>16</b>	<b>4</b>	<b>26</b>	<b>30</b>	<b>0</b>	<b>0</b>	<b>0</b>	<b>96</b>	<b>12</b>	<b>2</b>

Transport Destination			
Hospital Destination by Unit	Riverside - Shore Memorial	PRMC / Tidal Health	Other
Chincoteague	17	21	1
Saxis	3	2	
Bloxom	7	1	1
Parksley	105	2	
Onancock	68		
Melfa	17		
Wachapreague (Painter)	47		
Oak Hall	48	9	4
Wallops			
<b>Totals</b>	<b>313</b>	<b>36</b>	<b>7</b>

**Benchmark** = The Accomack County Board of Supervisors established a 20 minute standard for emergency response.

**NORS** = No Response by station or the call was handled by another station or agency.

**2nd Call** = 2nd ambulance call received while first ambulance was on another call.

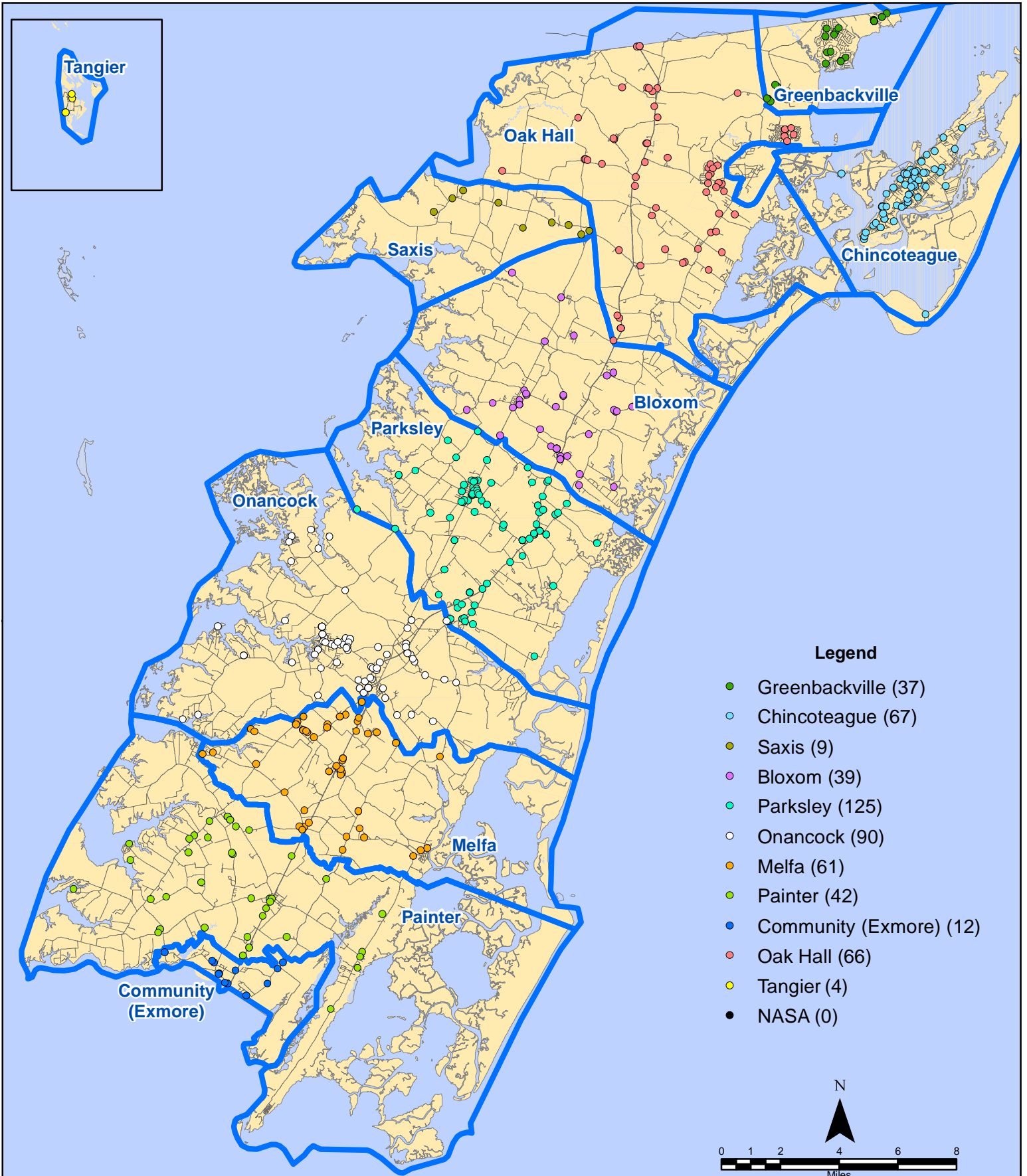
**3rd Call** = 3rd ambulance call received while first & second ambulances were on other calls.

\* This data excludes F1 Med (Medical Assist) calls in the Fire Data.

*This information was prepared using data supplied by the Eastern Shore of Virginia 911 Center. This information is original incident data only and may not be representative of all units and/or stations who responded to an incident.*

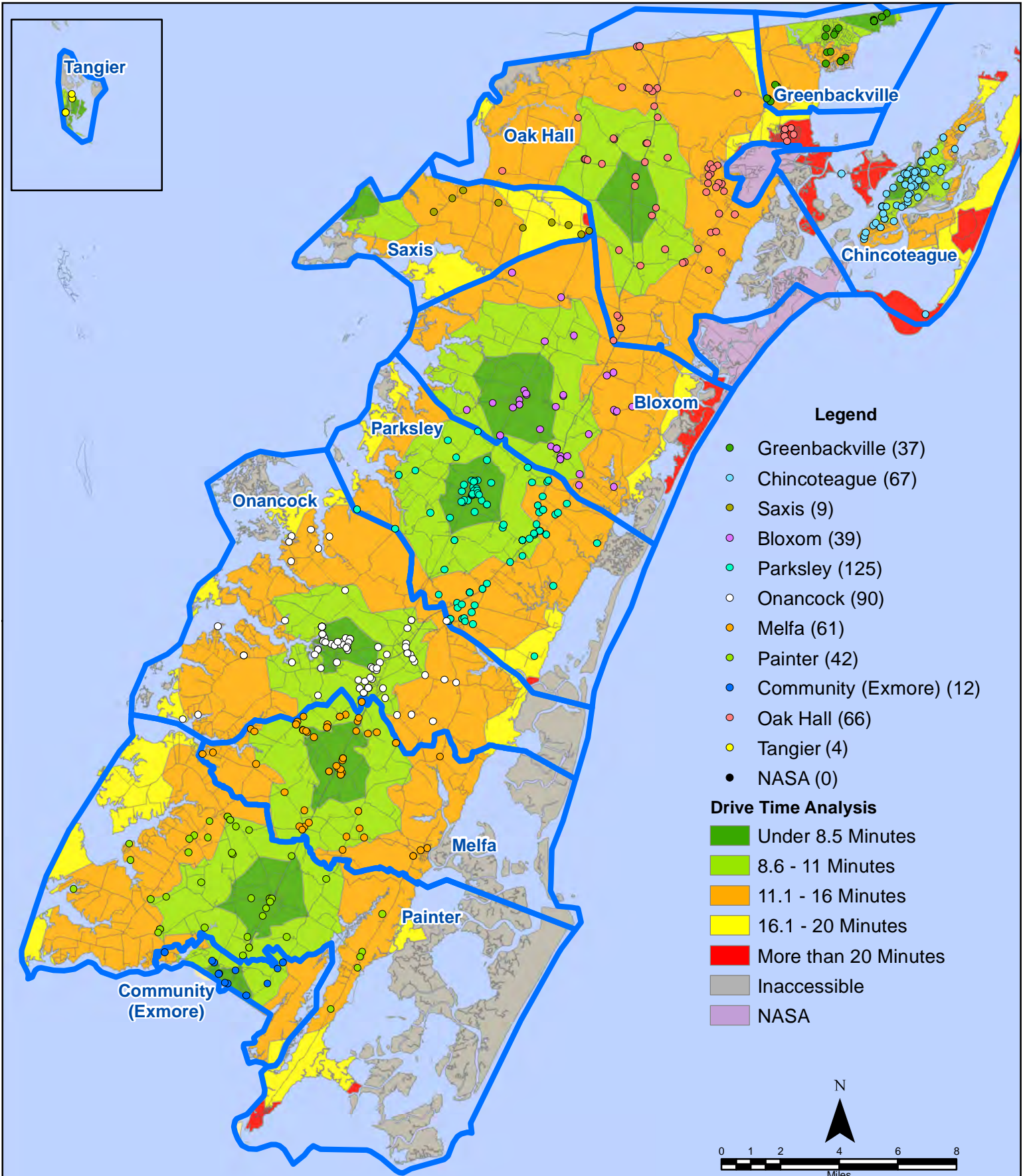
Station Receiving Aid

# November 2022 EMS Calls By District



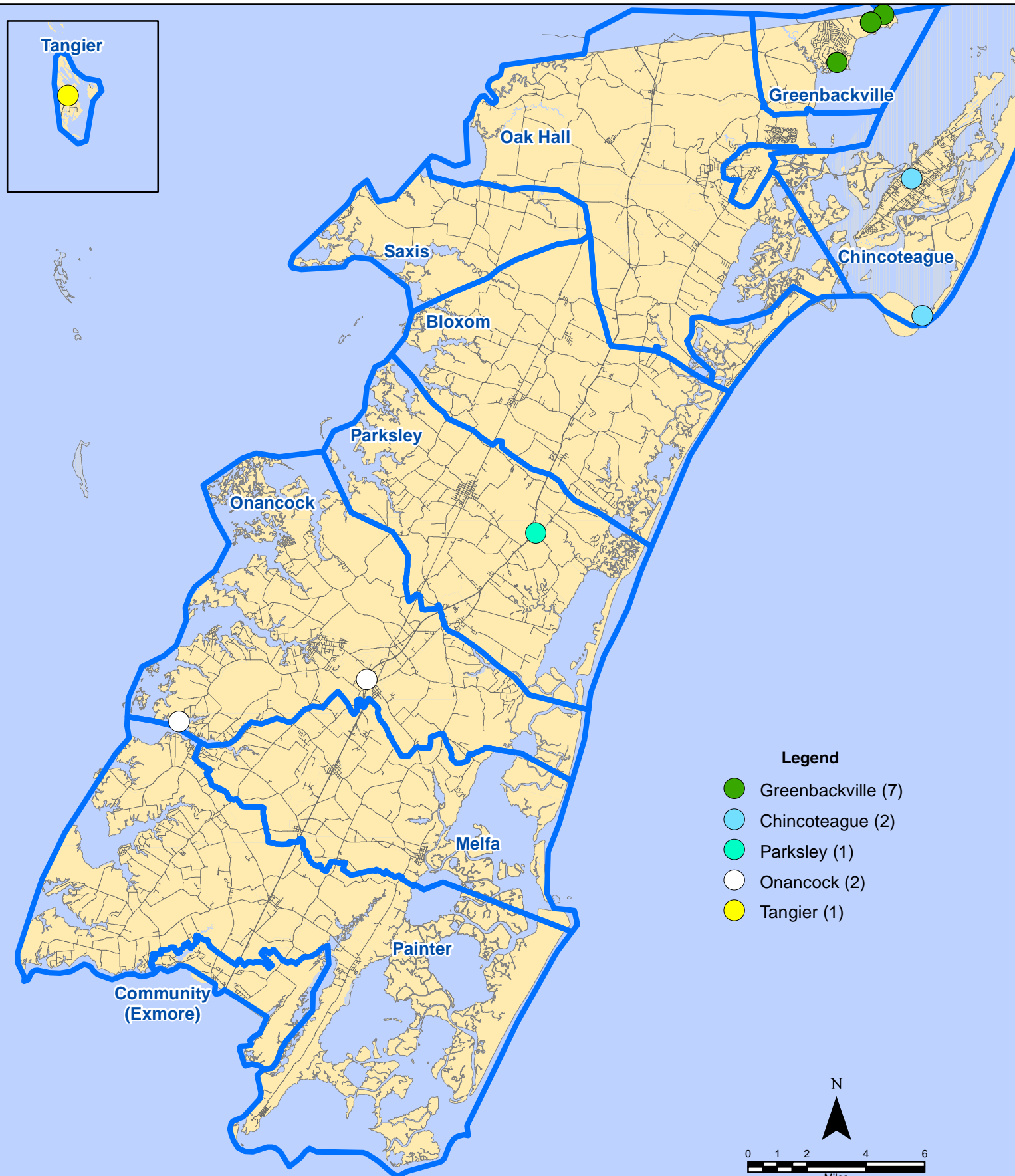
All points are plotted using X and Y coordinates provided by the ESVA 911 Center. Points may be plotted over one another when they are in close proximity.

# November 2022 EMS Calls By District



All points are plotted using X and Y coordinates provided by the ESVA 911 Center. Points may be plotted over one another when they are in close proximity.

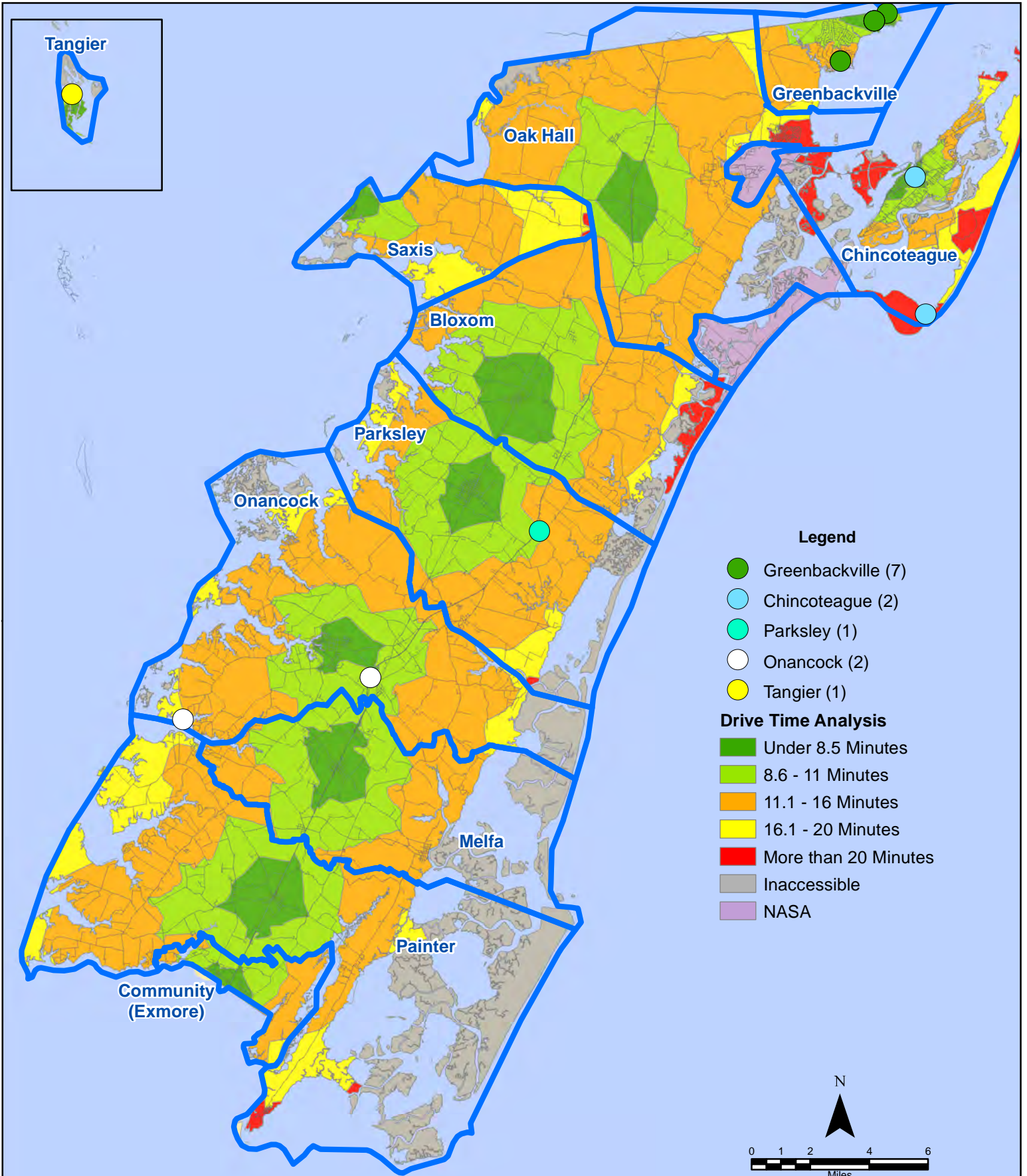
# November 2022 EMS Calls With Response Time Greater Than 20 Mins.



All points are plotted using X and Y coordinates provided by the ESVA 911 Center. Points may be plotted over one another when they are in close proximity.

Map Prepared by the Accomack County Department of Building, Planning & Economic Development using data from the ESVA 911 Center - December 14, 2022

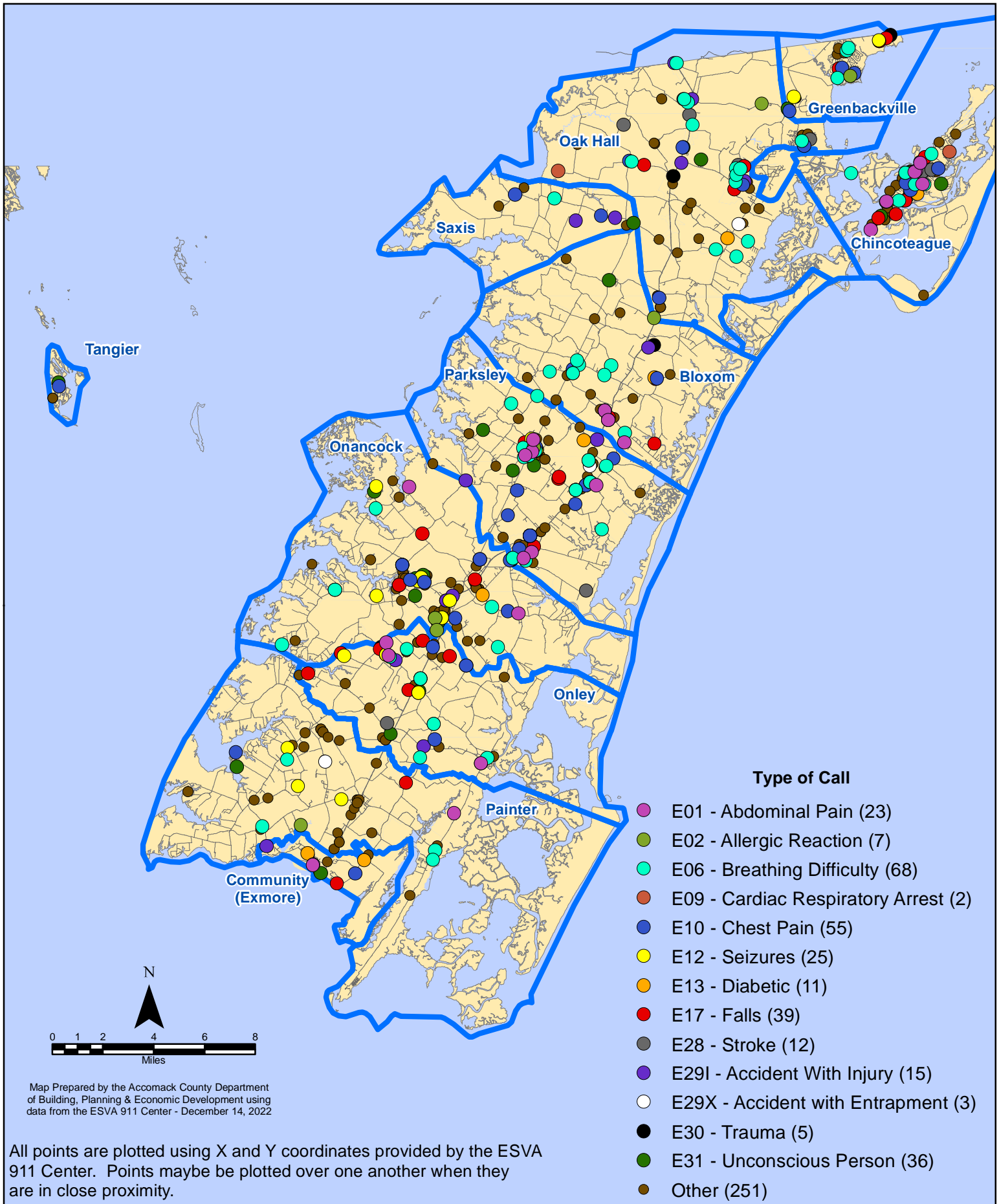
# November 2022 EMS Calls With Response Time Greater Than 20 Mins.



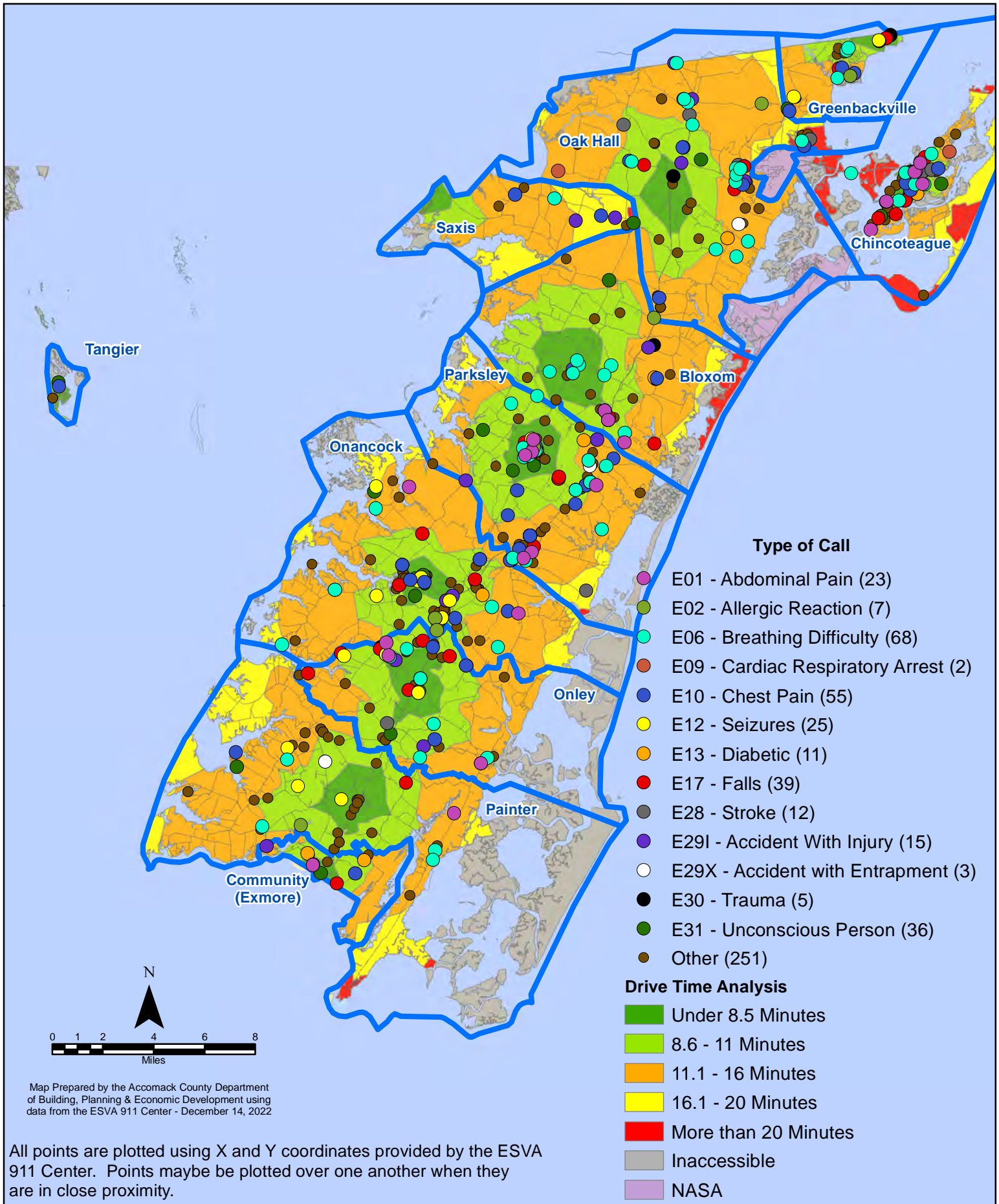
All points are plotted using X and Y coordinates provided by the ESVA 911 Center. Points may be plotted over one another when they are in close proximity.

Map Prepared by the Accomack County Department of Building, Planning & Economic Development using data from the ESVA 911 Center - December 14, 2022

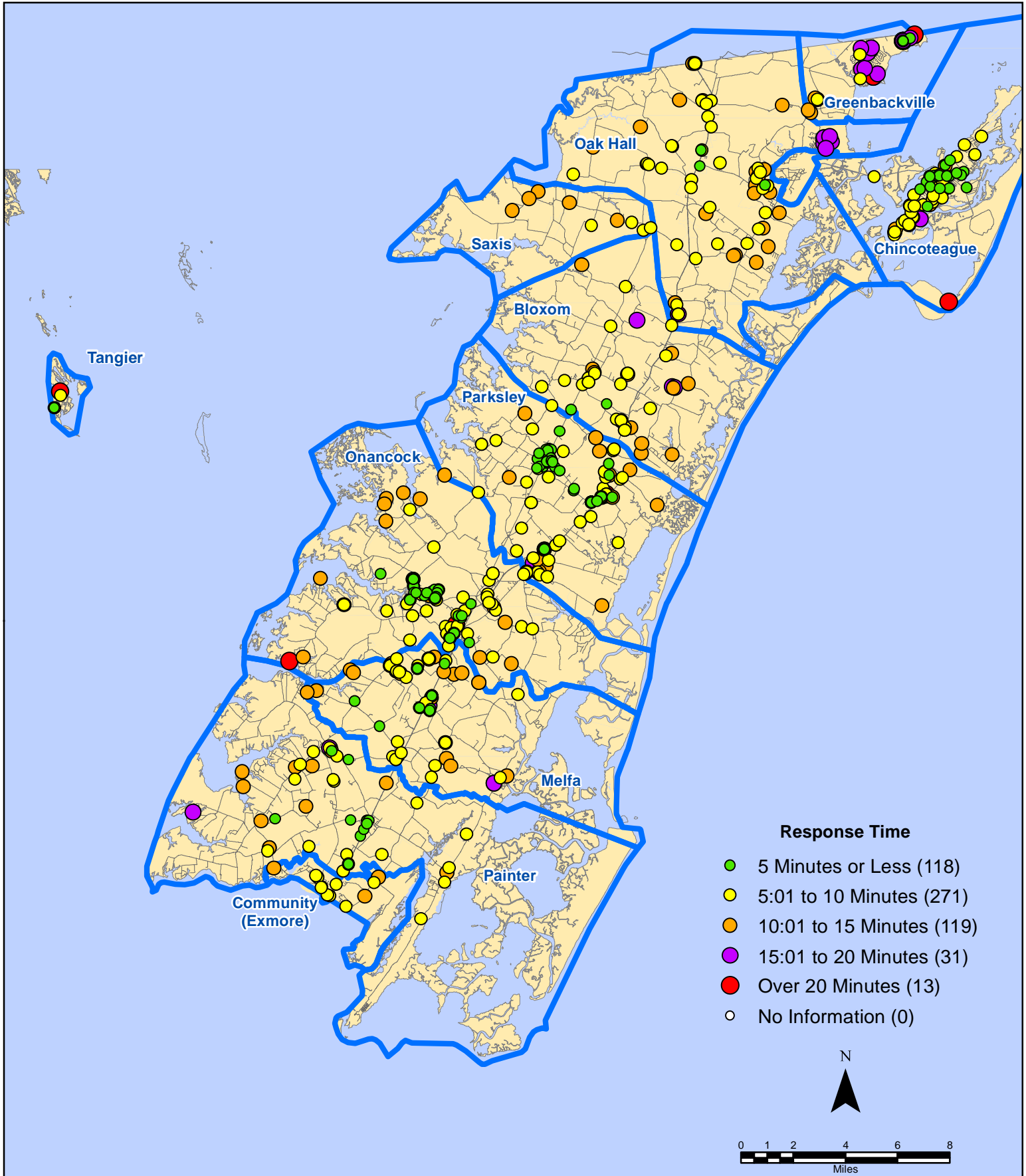
# November 2022 EMS Calls By Type



# November 2022 EMS Calls By Type



# November 2022 EMS Calls By Response Time

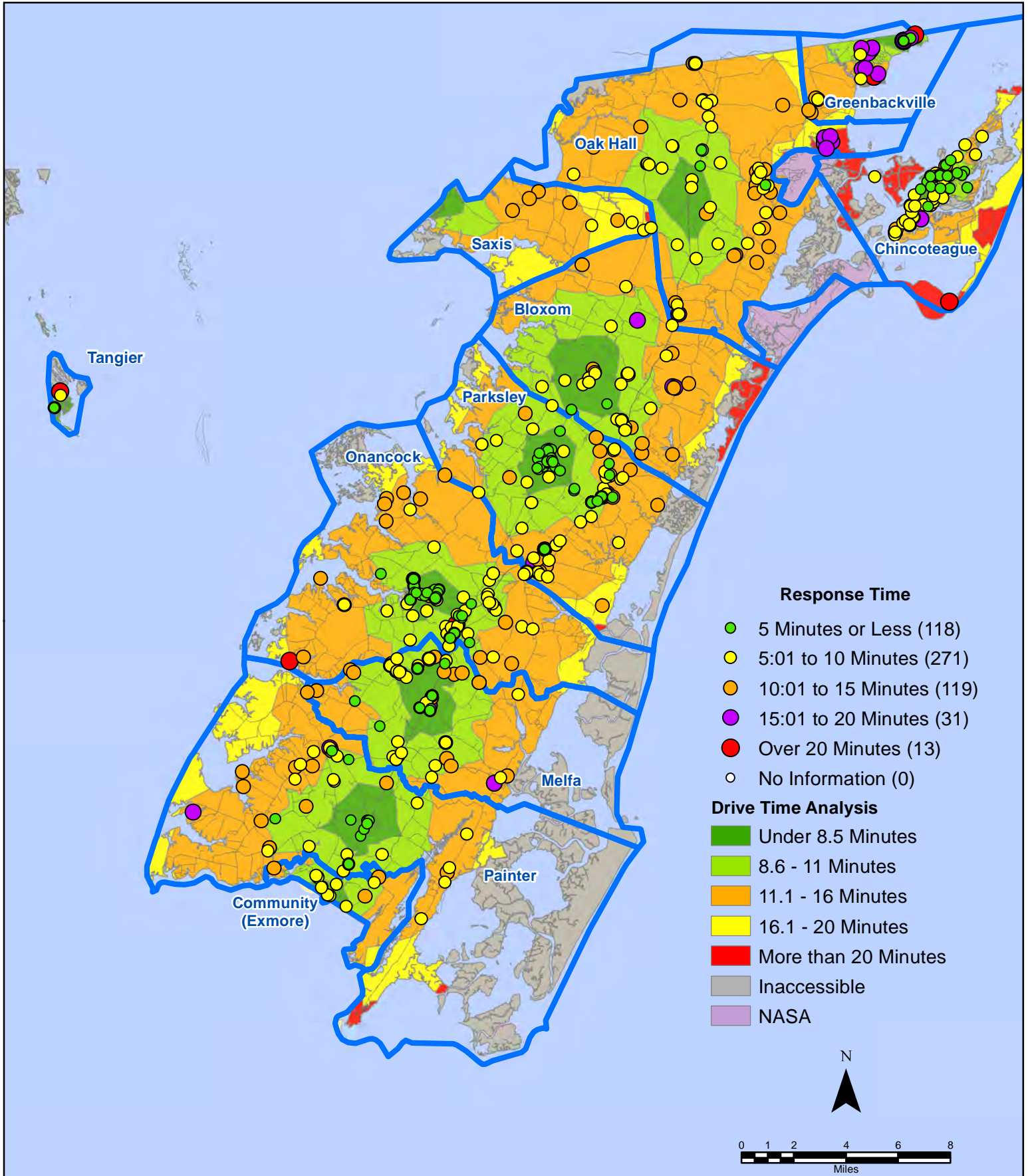


All points are plotted using X and Y coordinates provided by the ESVA 911 Center.  
Points may be plotted over one another when they are in close proximity.

Map Prepared by the Accomack County Department of Building, Planning & Economic Development using data from the ESVA 911 Center - December 14, 2022



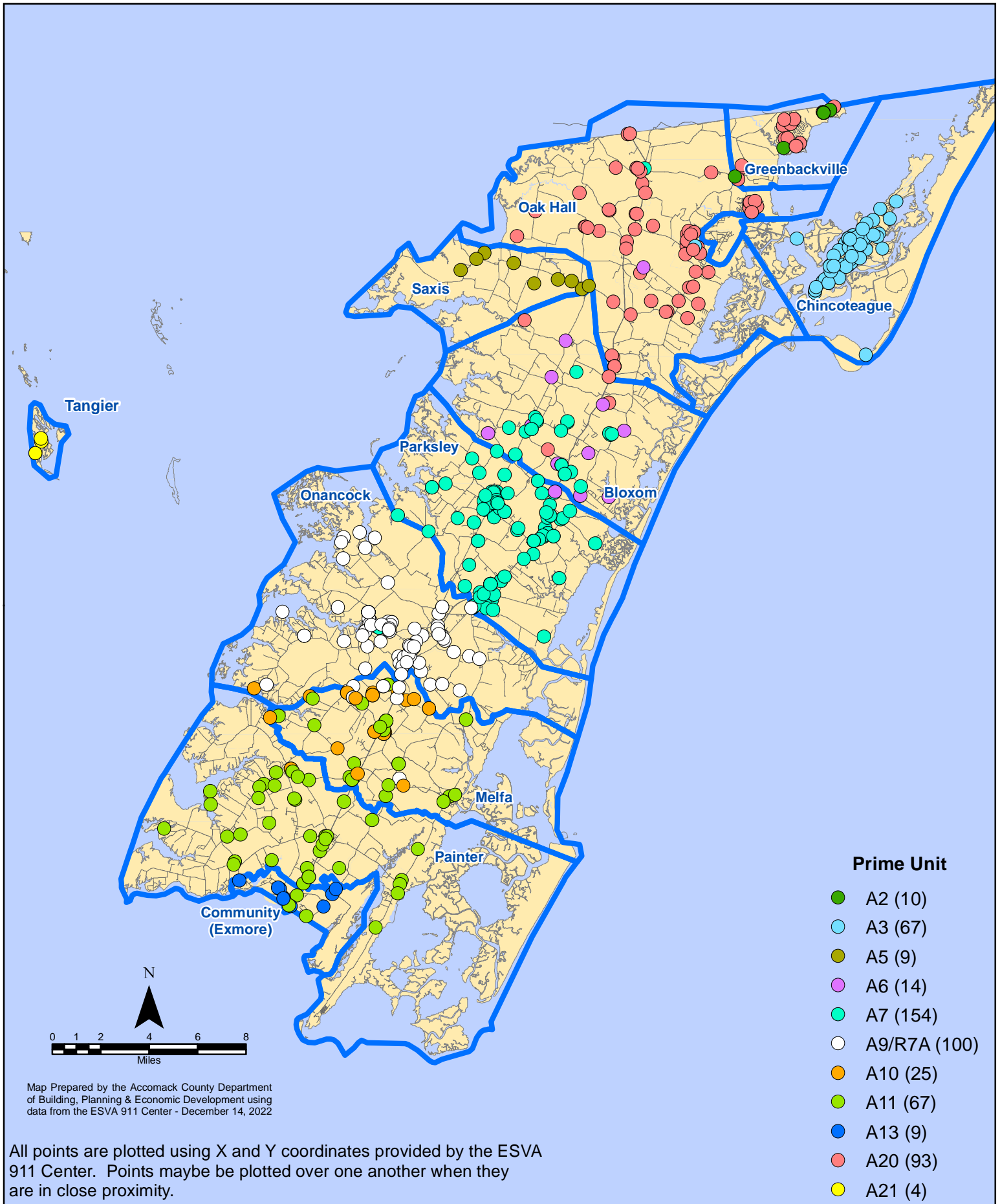
# November 2022 EMS Calls By Response Time



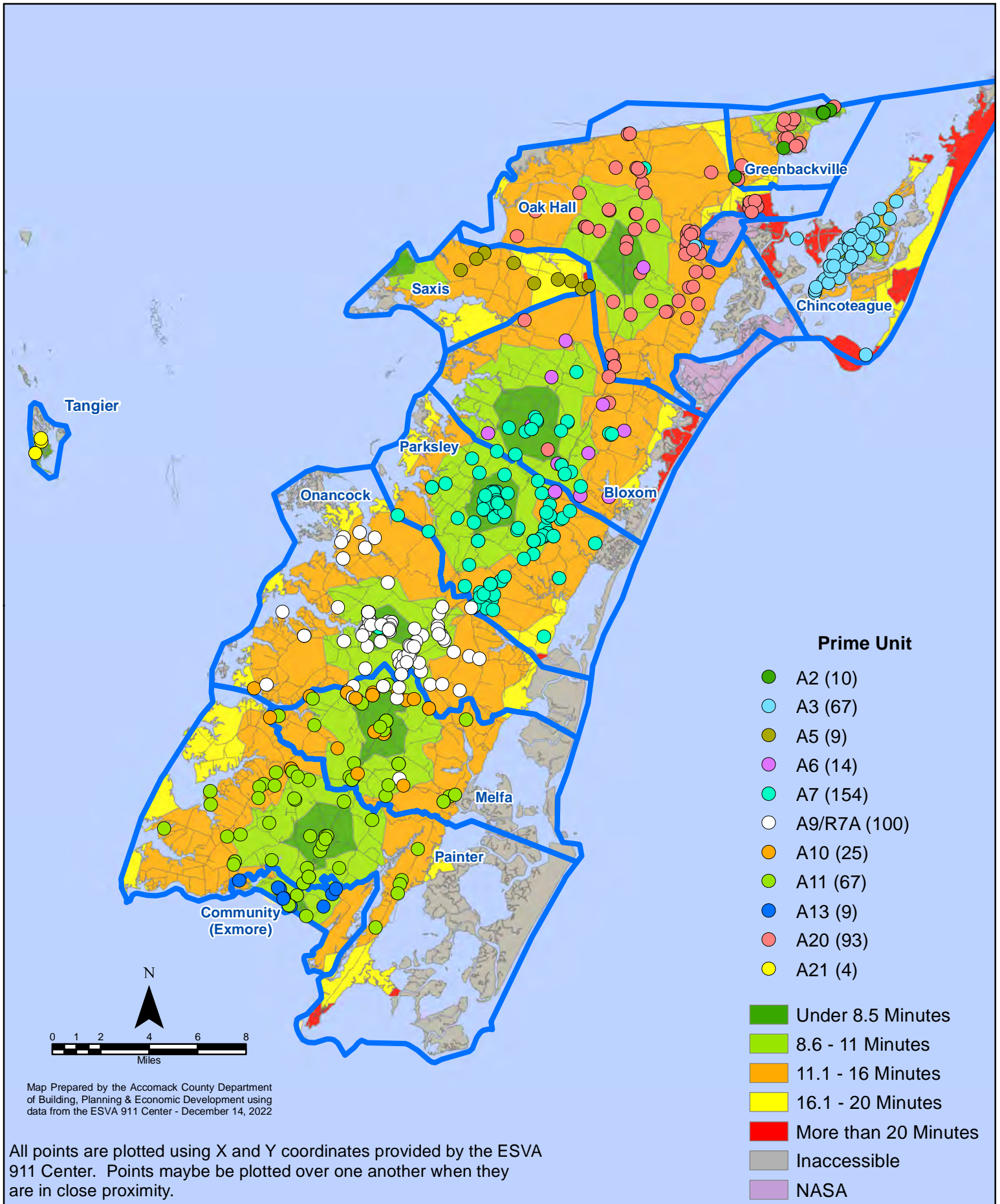
All points are plotted using X and Y coordinates provided by the ESVA 911 Center. Points may be plotted over one another when they are in close proximity.

Map Prepared by the Accomack County Department of Building, Planning & Economic Development using data from the ESVA 911 Center - December 14, 2022

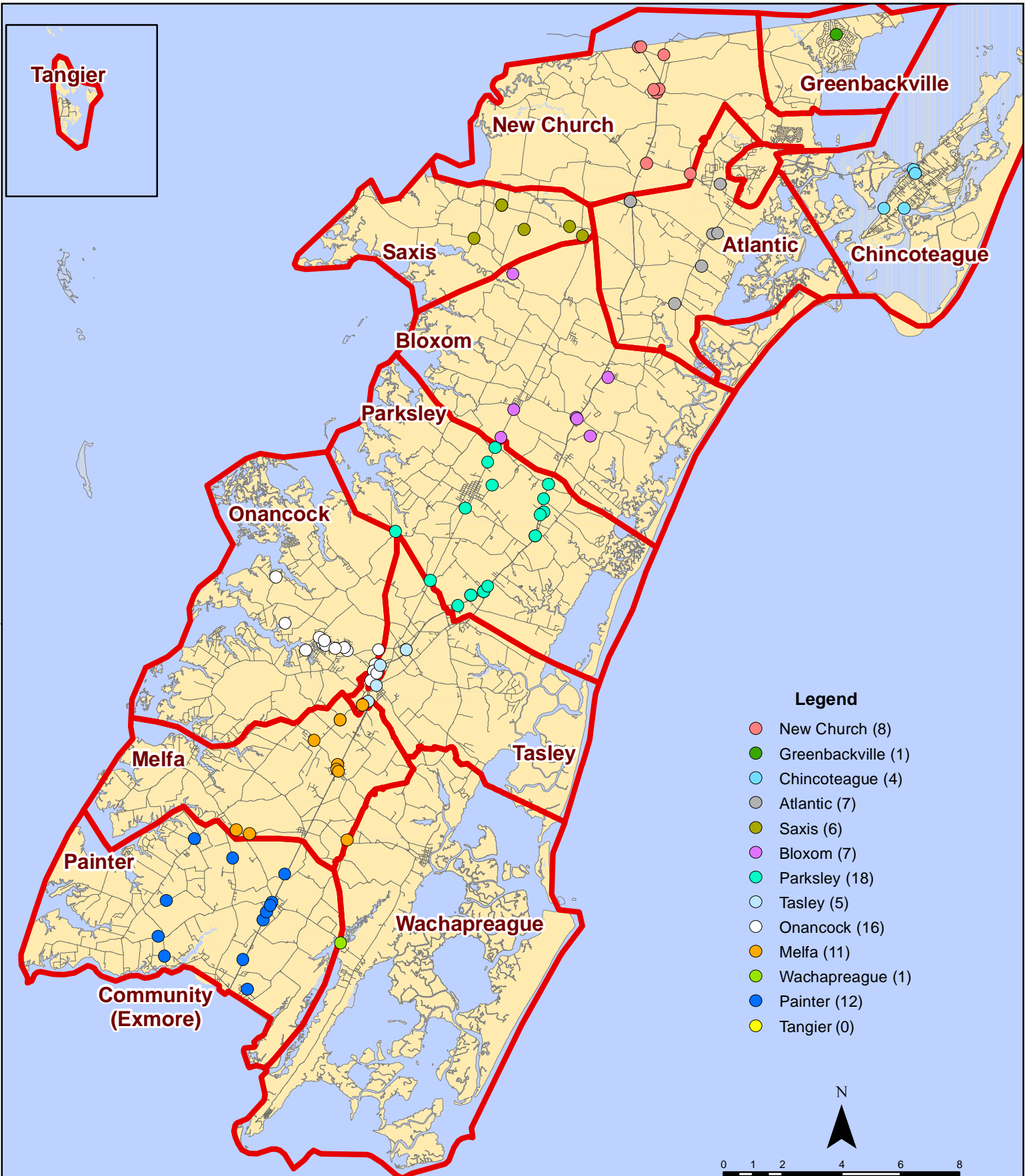
# November 2022 EMS Calls By Prime Unit



# November 2022 EMS Calls By Prime Unit



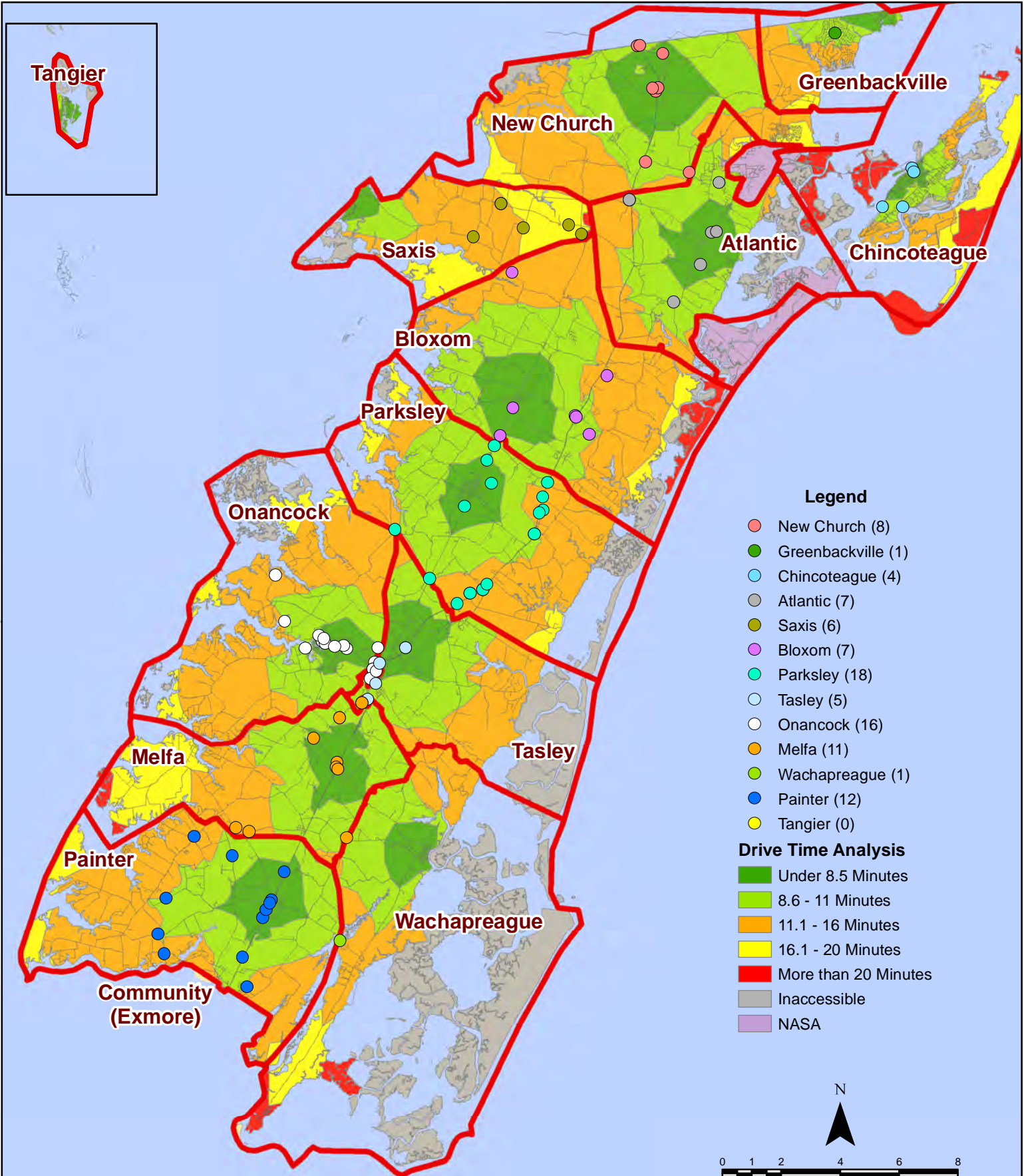
# November 2022 Fire Calls By District



All points are plotted using X and Y coordinates provided by the ESVA 911 Center. Points may be plotted over one another when they are in close proximity.

Map Prepared by the Accomack County Department of Building, Planning & Economic Development using data from the ESVA 911 Center - December 12, 2022

# November 2022 Fire Calls By District



All points are plotted using X and Y coordinates provided by the ESVA 911 Center. Points may be plotted over one another when they are in close proximity.

Map Prepared by the Accomack County Department of Building, Planning & Economic Development using data from the ESVA 911 Center - December 12, 2022

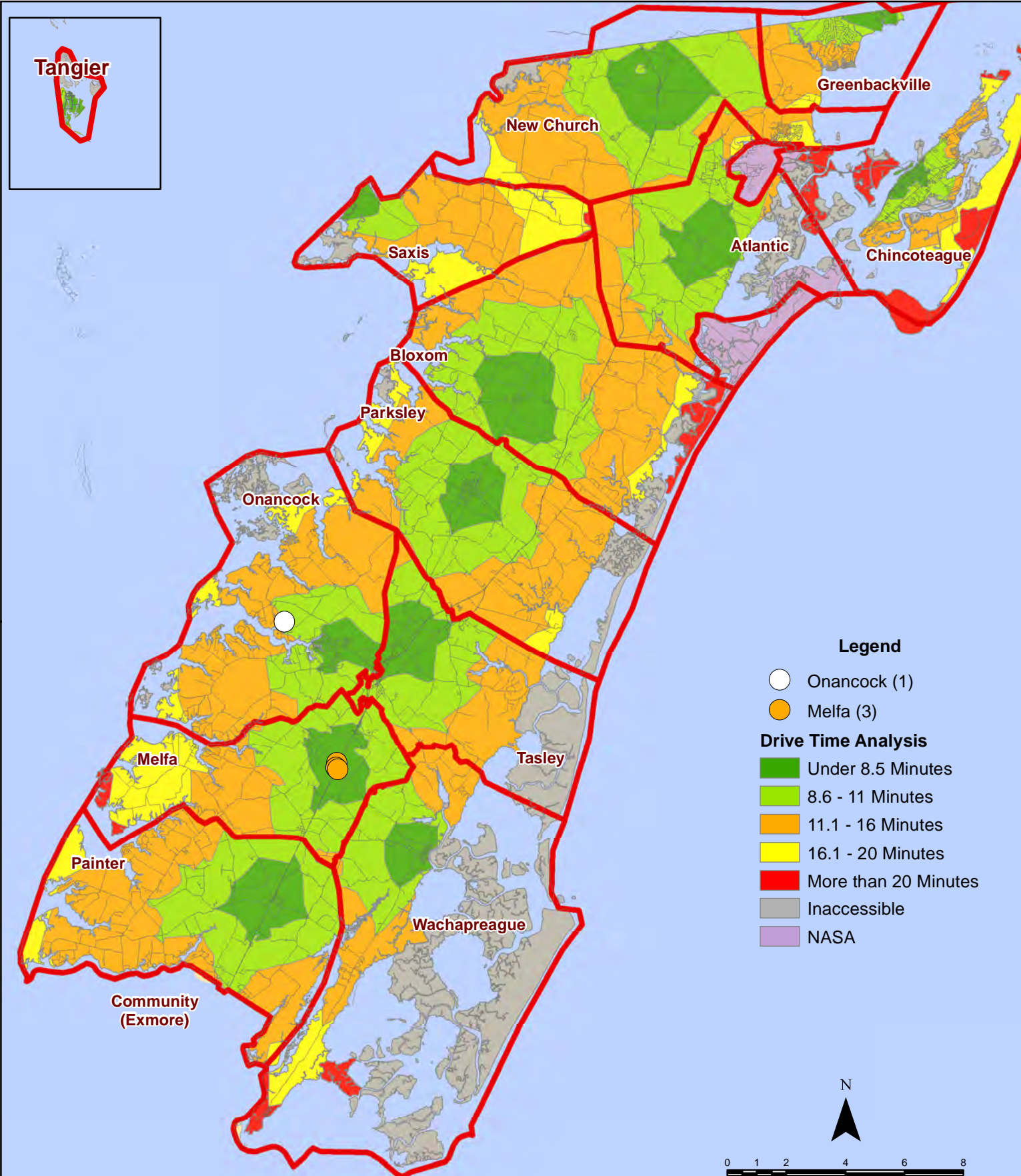
# November 2022 Fire Calls With Response Time Greater Than 20 Mins.



All points are plotted using X and Y coordinates provided by the ESVA 911 Center. Points maybe be plotted over one another when they are in close proximity.

Map Prepared by the Accomack County Department of Building, Planning & Economic Development using data from the ESVA 911 Center - December 12, 2022

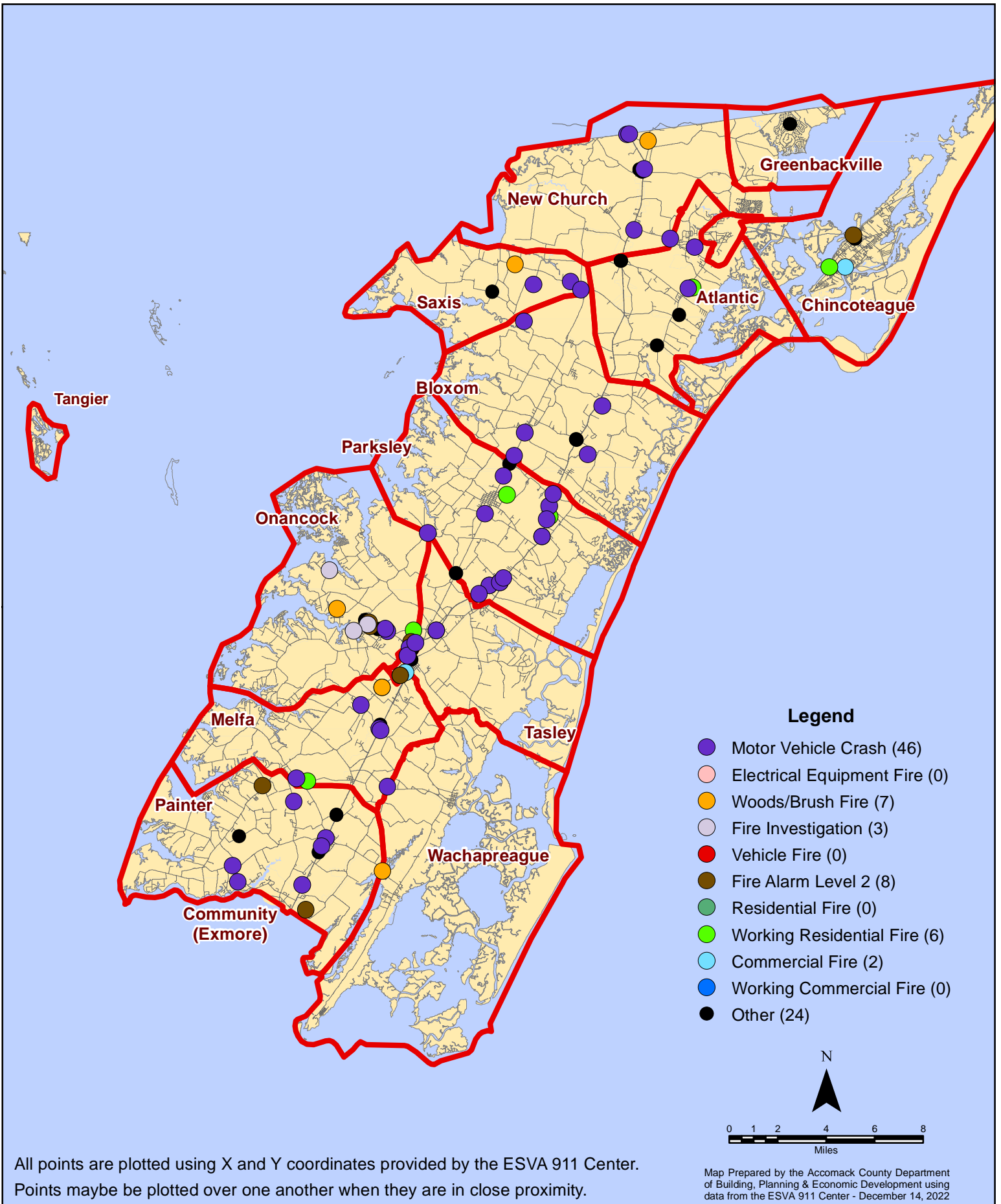
# November 2022 Fire Calls With Response Time Greater Than 20 Mins.



All points are plotted using X and Y coordinates provided by the ESVA 911 Center. Points maybe be plotted over one another when they are in close proximity.

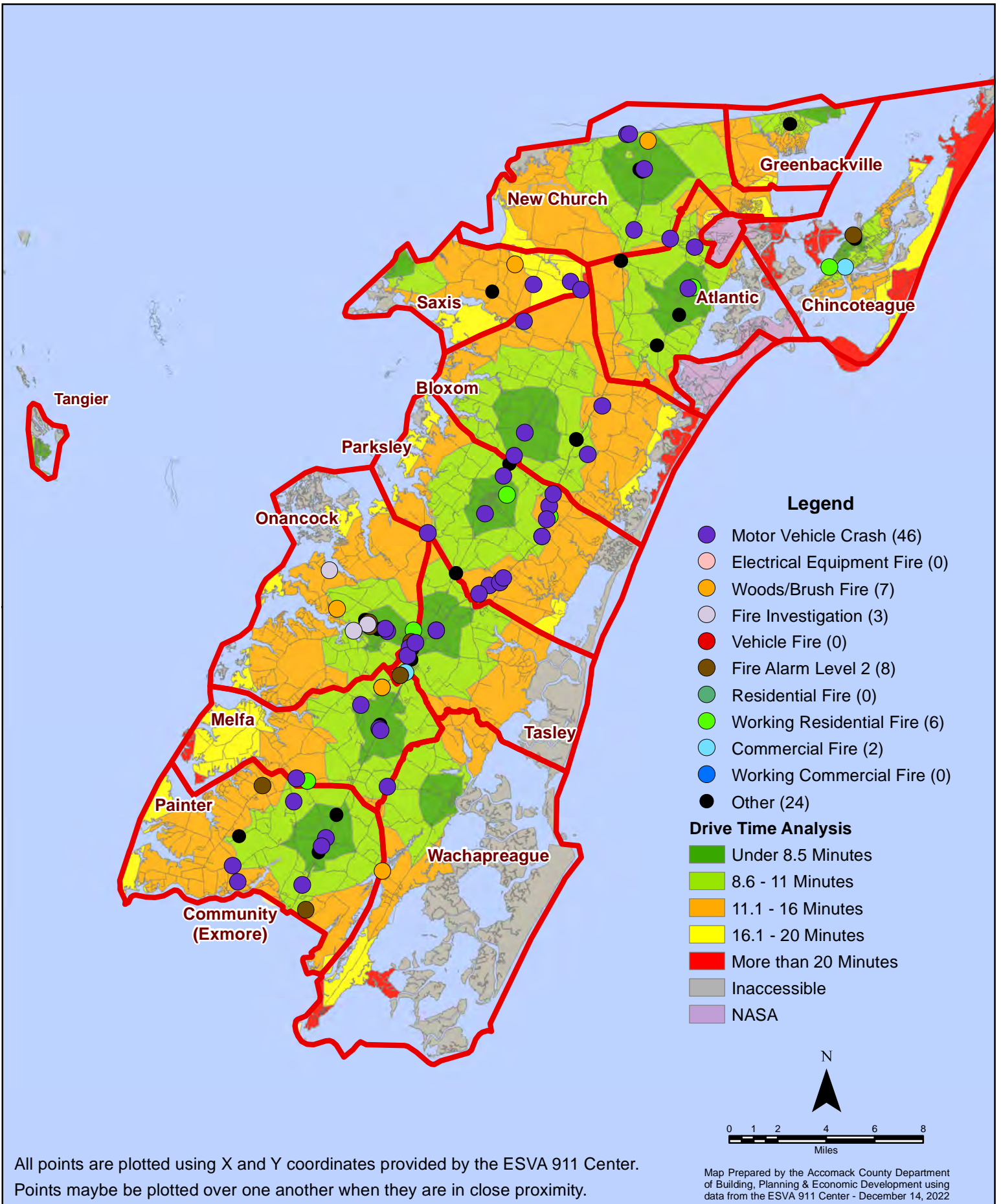
Map Prepared by the Accomack County Department of Building, Planning & Economic Development using data from the ESVA 911 Center - December 12, 2022

# November 2022 Fire Calls By Type





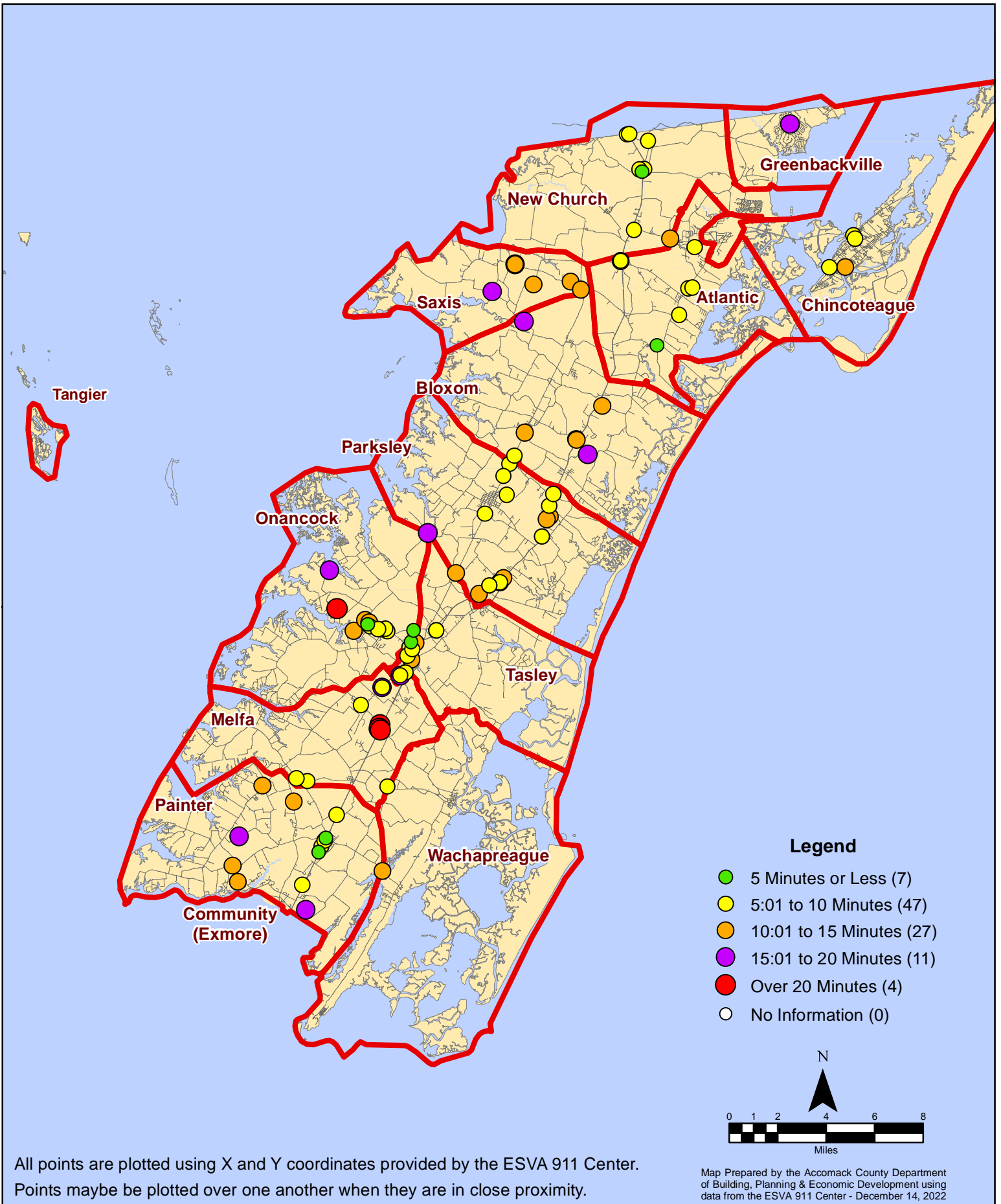
# November 2022 Fire Calls By Type



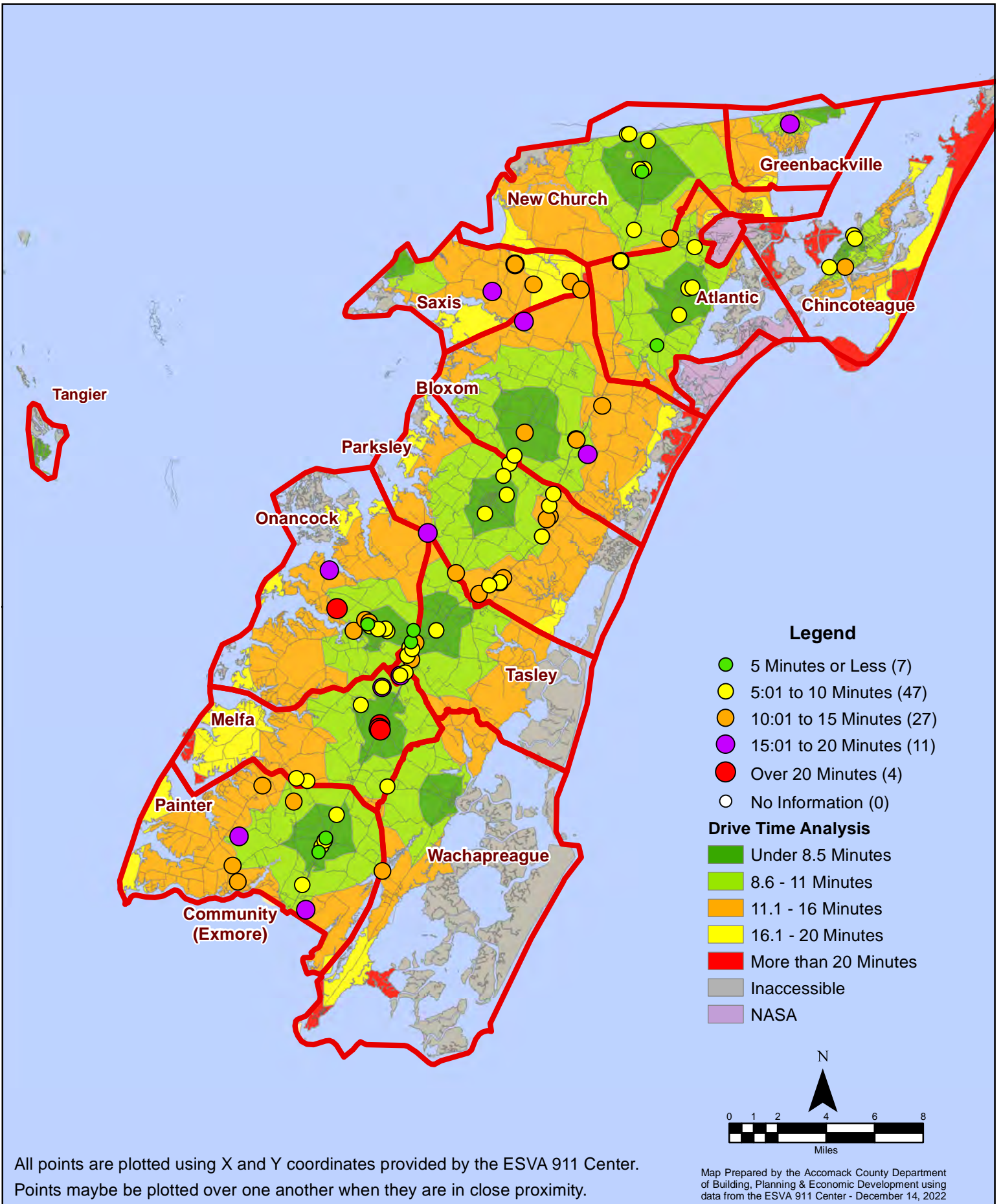
All points are plotted using X and Y coordinates provided by the ESVA 911 Center. Points may be plotted over one another when they are in close proximity.

Map Prepared by the Accomack County Department of Building, Planning & Economic Development using data from the ESVA 911 Center - December 14, 2022

# November 2022 Fire Calls By Response Time



# November 2022 Fire Calls By Response Time



All points are plotted using X and Y coordinates provided by the ESVA 911 Center. Points may be plotted over one another when they are in close proximity.

Map Prepared by the Accomack County Department of Building, Planning & Economic Development using data from the ESVA 911 Center - December 14, 2022