

December 2022

Fire - Performance Measure Data *					
Response District	Total Calls in District	Greater than 20 min. Response Time	Longest Response Time	Calls Handled by other agency	Overall Station Benchmark %
New Church	14	0	0:15:47	0	100.0%
Greenbackville	3	0	0:12:07	0	100.0%
Chincoteague	6	0	0:12:38	0	100.0%
Atlantic	10	0	0:13:27	0	100.0%
Saxis	3	0	0:11:54	0	100.0%
Bloxom	5	0	0:16:43	0	100.0%
Parksley	21	0	0:19:27	0	100.0%
Tasley	7	0	0:15:18	0	100.0%
Onancock	8	0	0:12:02	0	100.0%
Melfa	4	0	0:13:32	2	100.0%
Wachapreague	0	0	0	0	#DIV/0!
Painter	8	0	0:12:29	0	100.0%
Tangier	1	0	0:08:25	0	100.0%
System Totals	90	0	0:19:27	2	100.0%

EMS - Performance Measure Data						
Response District	Total Calls in District	Greater than 20 min. Response Time	Longest Response Time	Calls Handled by other agency	Station Benchmark Compliance %	Overall Station Reliability %
Greenbackville	22	7	0:22:43	14	68.2%	36.4%
Chincoteague	73	2	0:30:55	2	97.3%	97.3%
Saxis	21	0	0:11:01	4	100.0%	81.0%
Bloxom	40	0	0:15:16	24	100.0%	40.0%
Parksley	117	1	0:22:24	0	99.1%	100.0%
Onancock	97	2	0:22:48	6	97.9%	93.8%
Melfa	41	1	0:21:20	18	97.6%	56.1%
Wachapreague (Painter)	45	0	0:14:20	2	100.0%	95.6%
Oak Hall	92	0	0:19:36	7	100.0%	92.4%
Tangier	10	1	0:22:08	0	90.0%	100.0%
Community (Exmore)	6	0	0:18:23	3	100.0%	50.0%
System Totals	564	14	0:30:55	80	97.5%	85.8%

EMS Mutual Aid Data															
	Station Giving Aid														
	Greenbackville	Chincoteague	Saxis	Bloxom	Parksley	Onancock	Melfa	Wachapreague/Painter	Oak Hall	Community (Exmore)	Northampton	Wallops	NORS	2nd Call	3rd Call
Greenbackville		1							13				13	1	
Chincoteague								2						2	
Saxis								4					4		
Bloxom					16			8					24		
Parksley															
Onancock					4		2						2	4	
Melfa						7	11						17	1	
Wachapreague (Painter)							1		1				2		
Oak Hall	1	4		2									2	3	2
Community (Exmore)								3					3		
Northampton Co.															
Wallops															
Totals	1	5	0	0	22	7	3	14	27	1	0	0	67	11	2

Transport Destination			
Hospital Destination by Unit	Riverside - Shore Memorial	PRMC / Tidal Health	Other
Chincoteague	20	24	1
Saxis	10	2	
Bloxom	9		
Parksley	89	1	
Onancock	63		
Melfa	16		
Wachapreague (Painter)	54		1
Oak Hall	47	31	2
Wallops	1		
Totals	309	61	5

Benchmark = The Accomack County Board of Supervisors established a 20 minute standard for emergency response.

NORS = No Response by station or the call was handled by another station or agency.

2nd Call = 2nd ambulance call received while first ambulance was on another call.

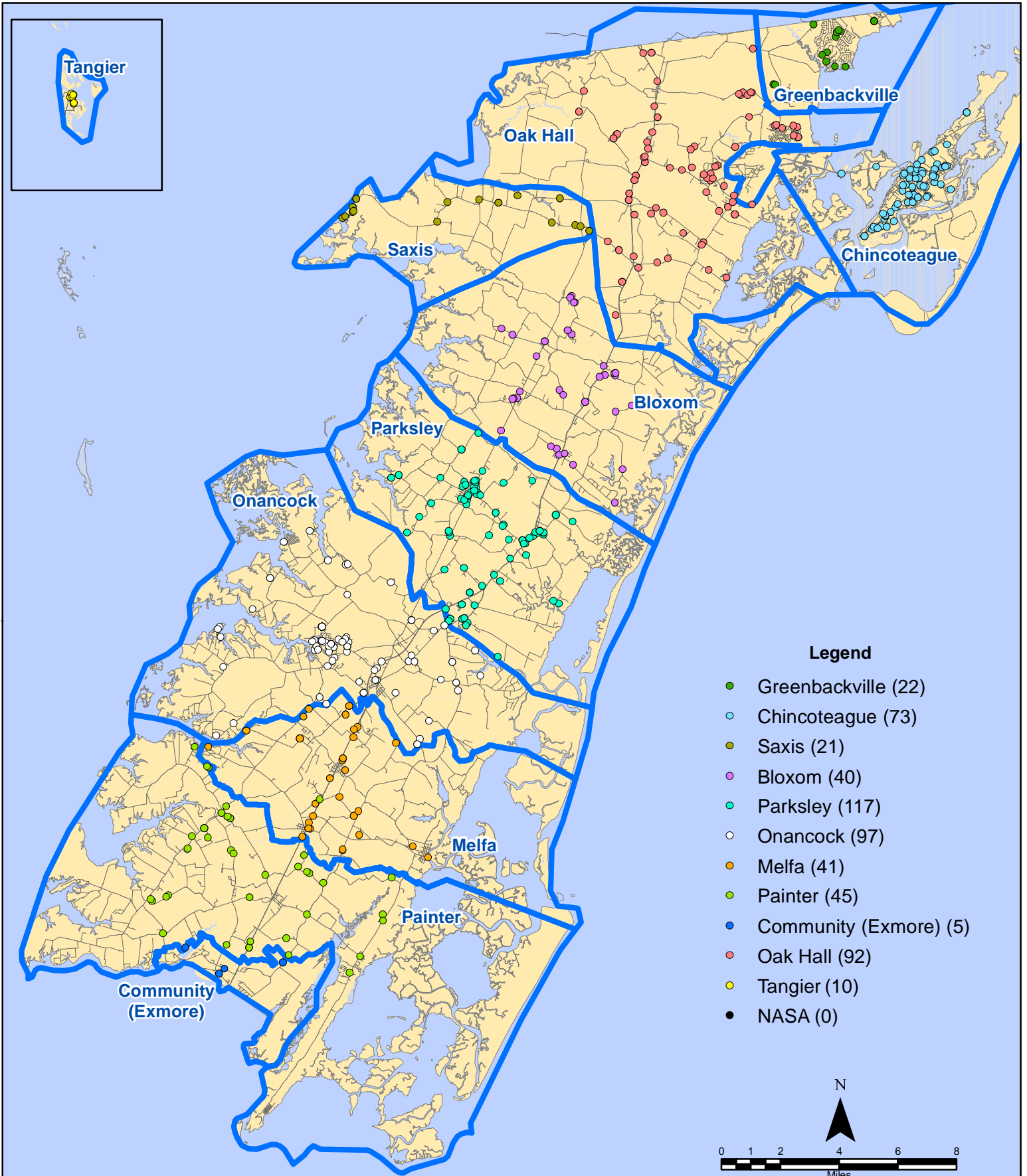
3rd Call = 3rd ambulance call received while first & second ambulances were on other calls.

* This data excludes F1 Med (Medical Assist) calls in the Fire Data.

This information was prepared using data supplied by the Eastern Shore of Virginia 911 Center. This information is original incident data only and may not be representative of all units and/or stations who responded to an incident.

Station Receiving Aid

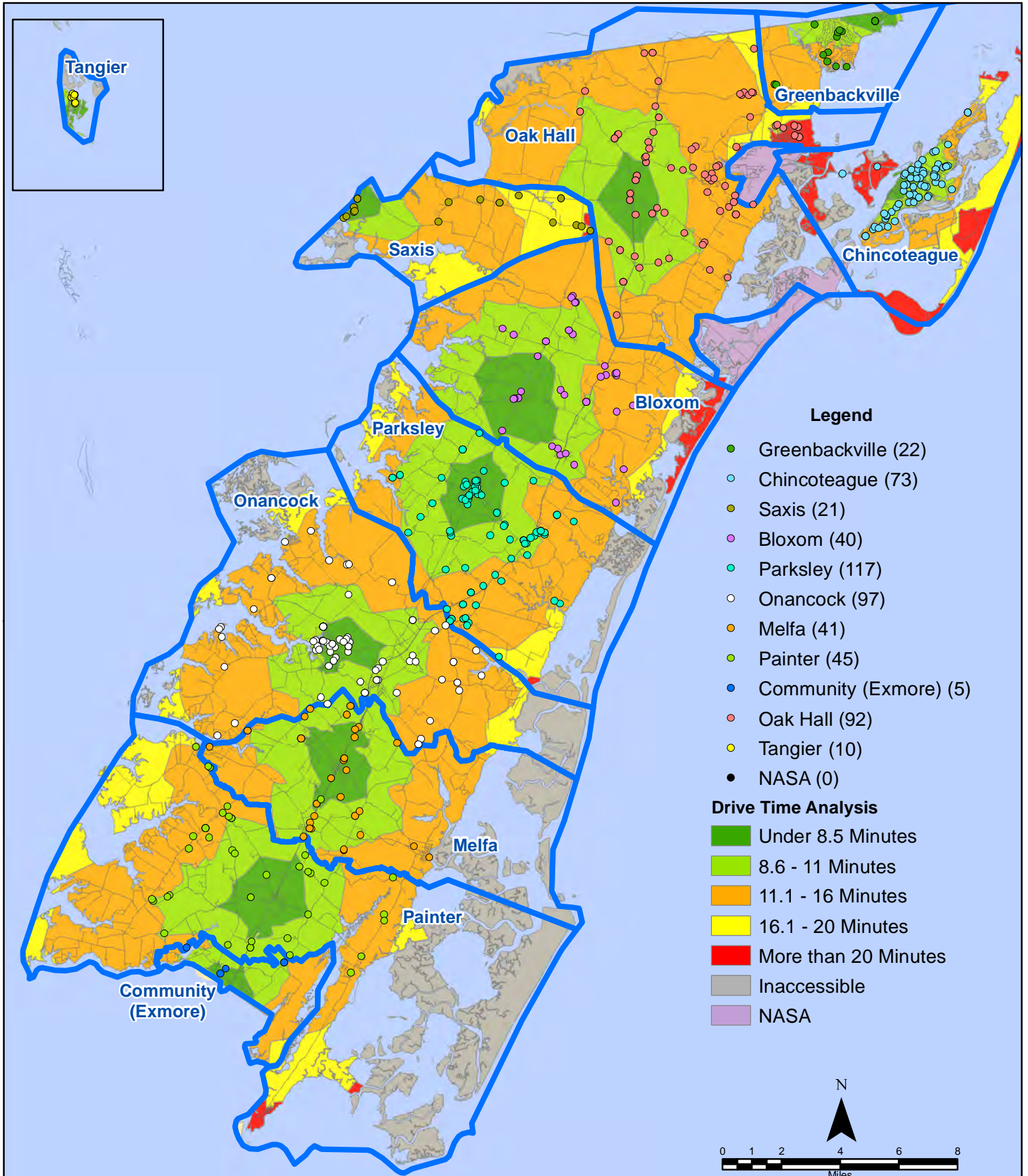
December 2022 EMS Calls By District



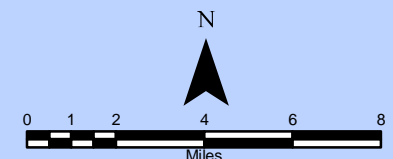
All points are plotted using X and Y coordinates provided by the ESVA 911 Center.
Points may be plotted over one another when they are in close proximity.

Map Prepared by the Accomack County Department of Building, Planning & Economic Development using data from the ESVA 911 Center - January 23, 2023

December 2022 EMS Calls By District

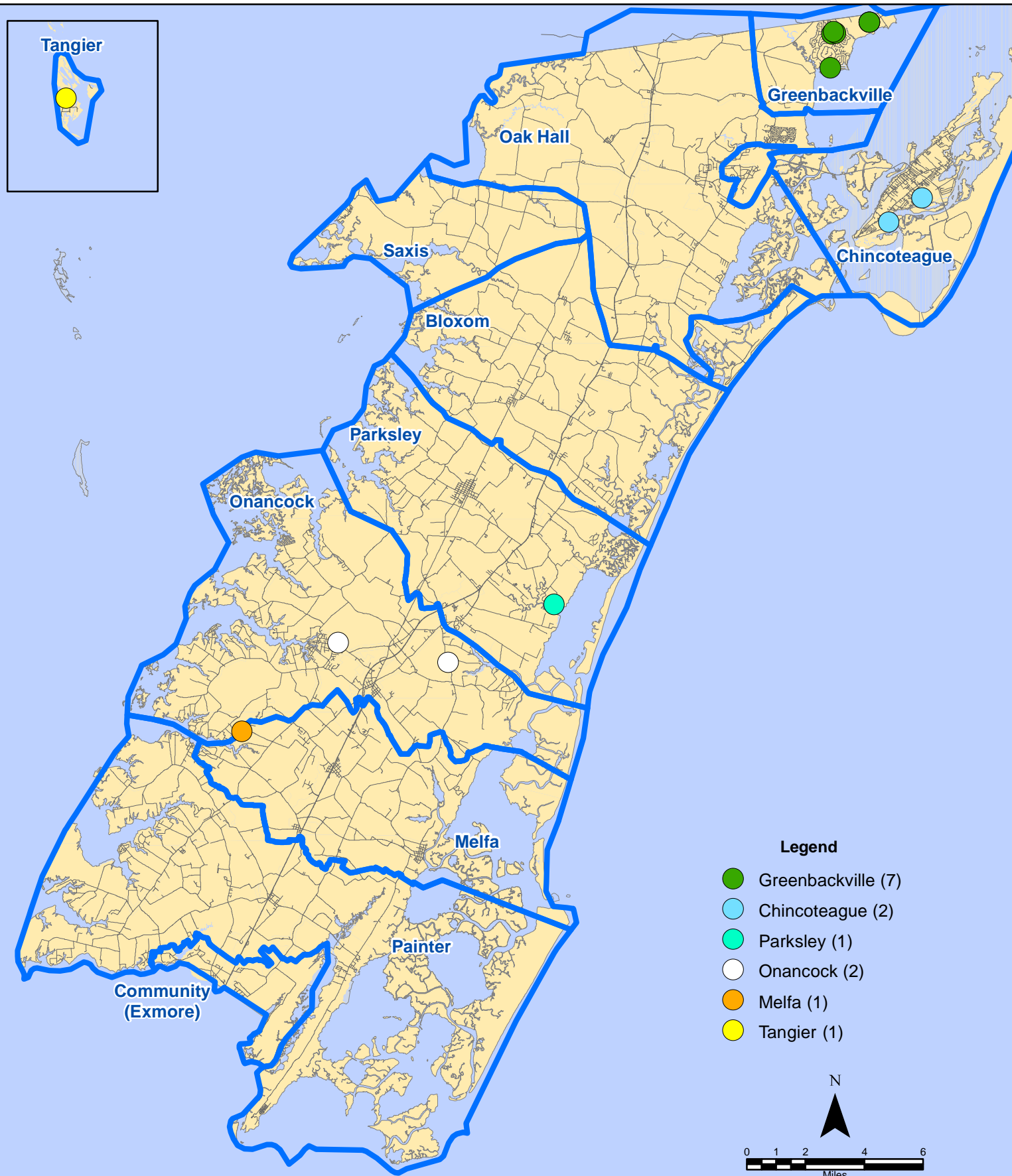


All points are plotted using X and Y coordinates provided by the ESVA 911 Center. Points may be plotted over one another when they are in close proximity.



Map Prepared by the Accomack County Department of Building, Planning & Economic Development using data from the ESVA 911 Center - January 23, 2023

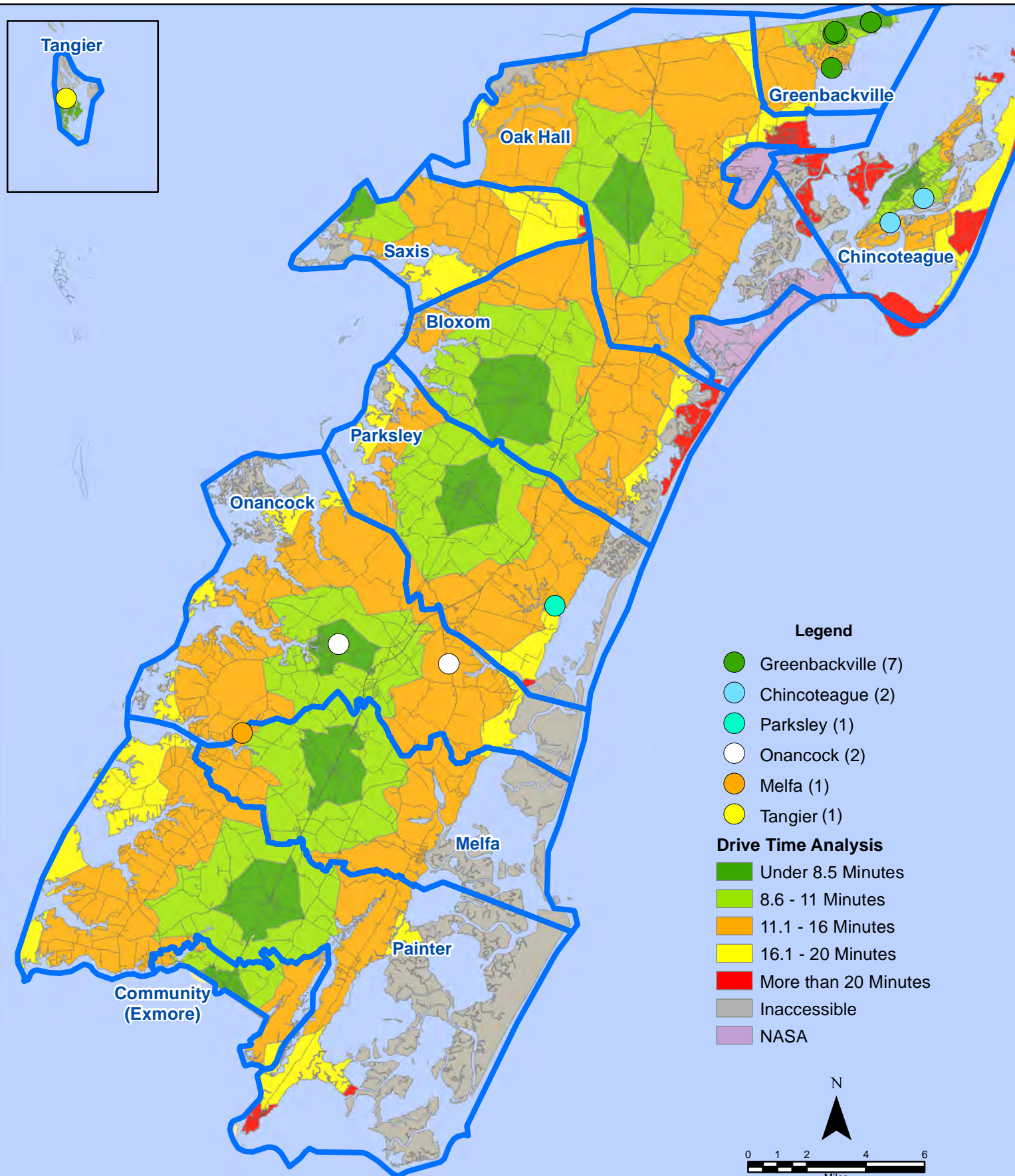
December 2022 EMS Calls With Response Time Greater Than 20 Mins.



All points are plotted using X and Y coordinates provided by the ESVA 911 Center. Points may be plotted over one another when they are in close proximity.

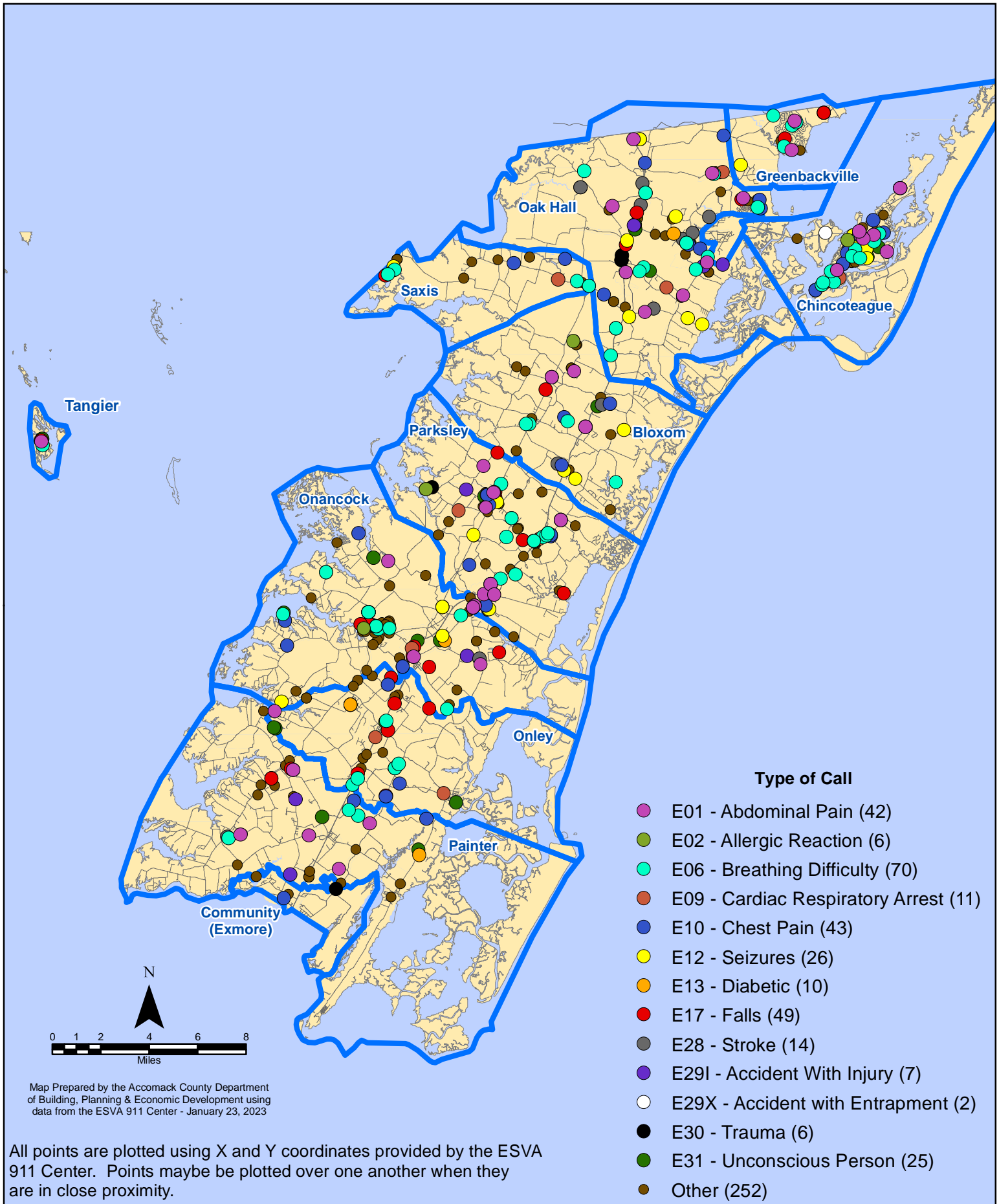
Map Prepared by the Accomack County Department of Building, Planning & Economic Development using data from the ESVA 911 Center - January 20, 2023

December 2022 EMS Calls With Response Time Greater Than 20 Mins.

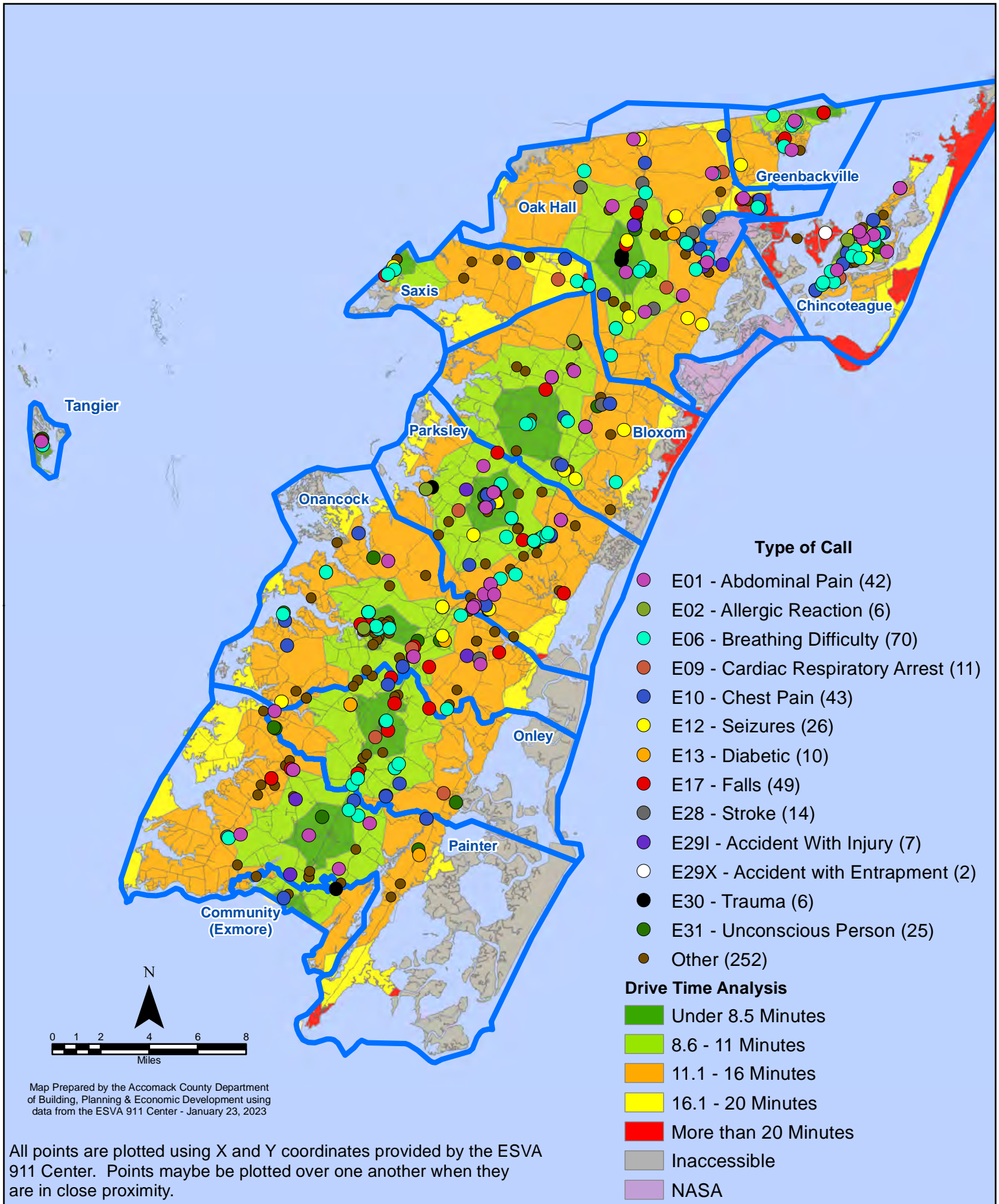


All points are plotted using X and Y coordinates provided by the ESVA 911 Center. Points may be plotted over one another when they are in close proximity.

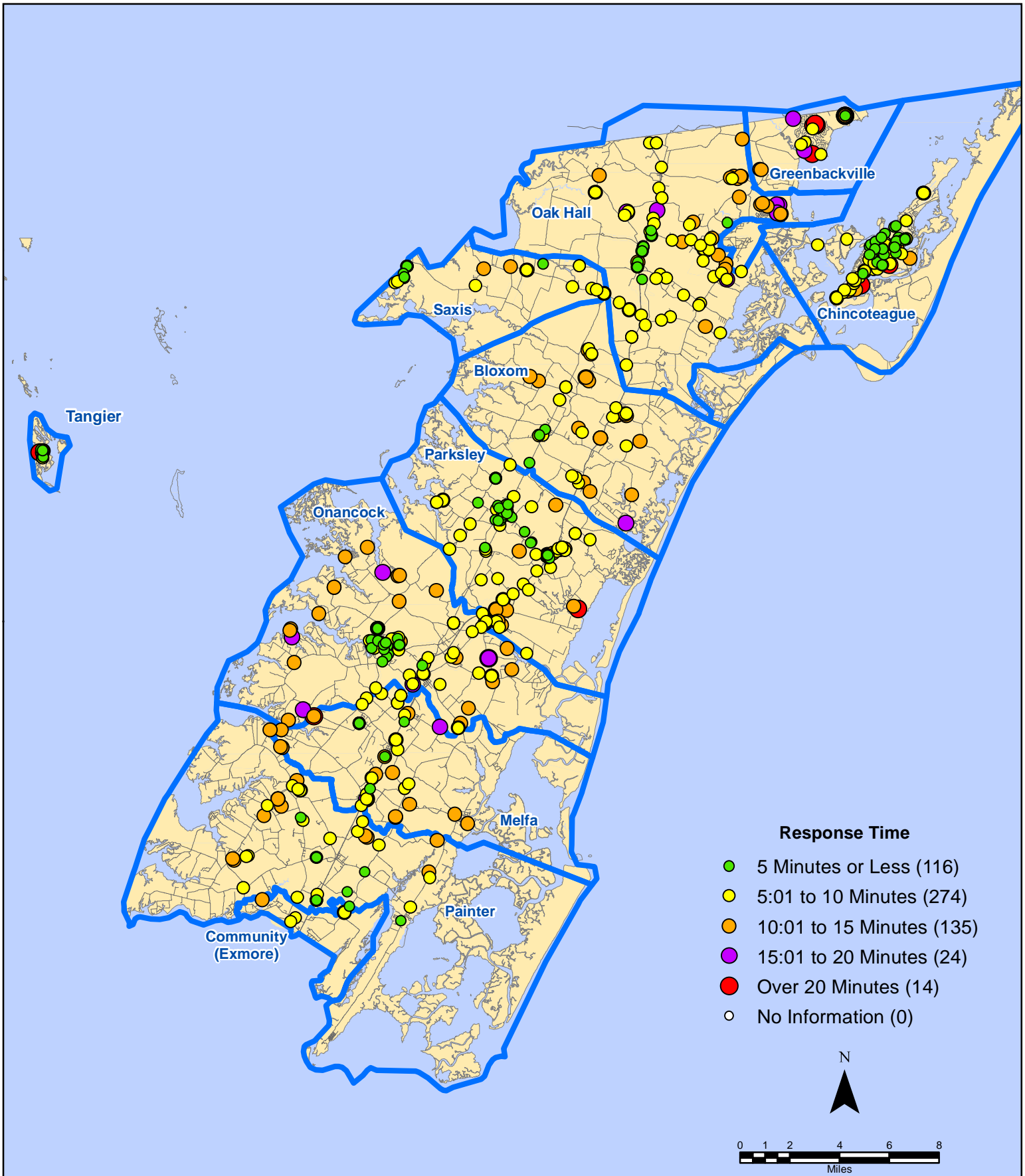
December 2022 EMS Calls By Type



December 2022 EMS Calls By Type



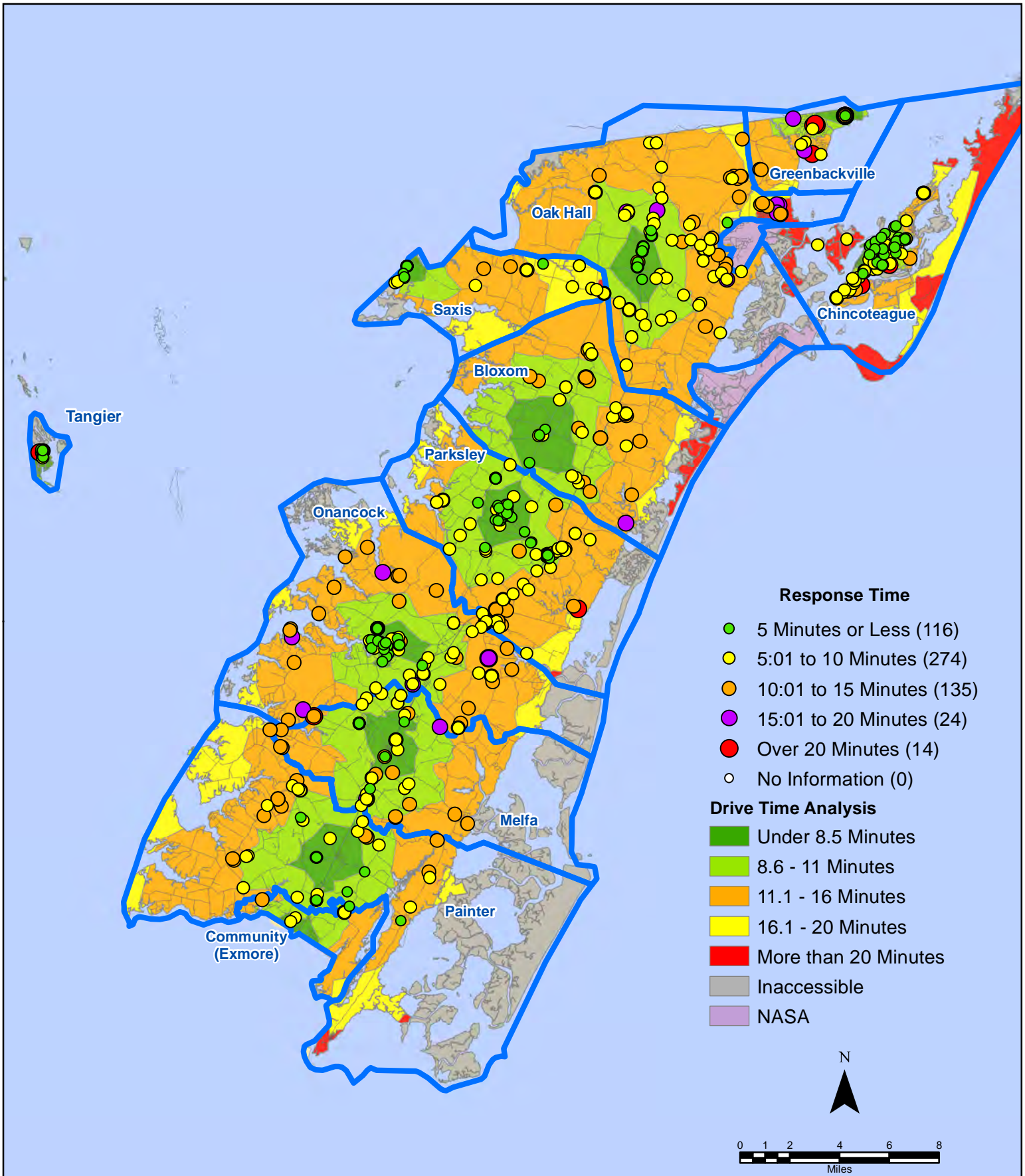
December 2022 EMS Calls By Response Time



All points are plotted using X and Y coordinates provided by the ESVA 911 Center. Points may be plotted over one another when they are in close proximity.

Map Prepared by the Accomack County Department of Building, Planning & Economic Development using data from the ESVA 911 Center - January 23, 2023

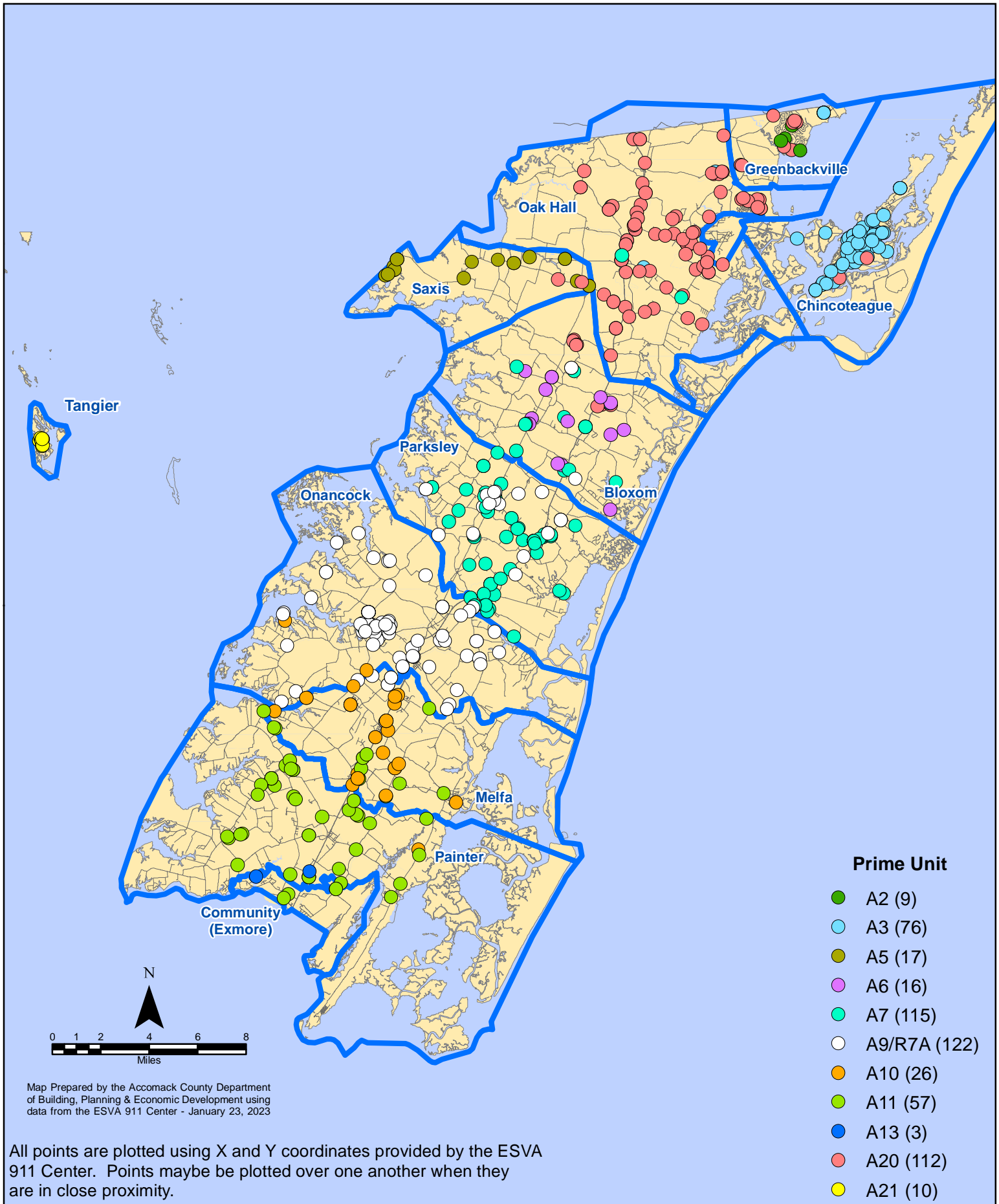
December 2022 EMS Calls By Response Time



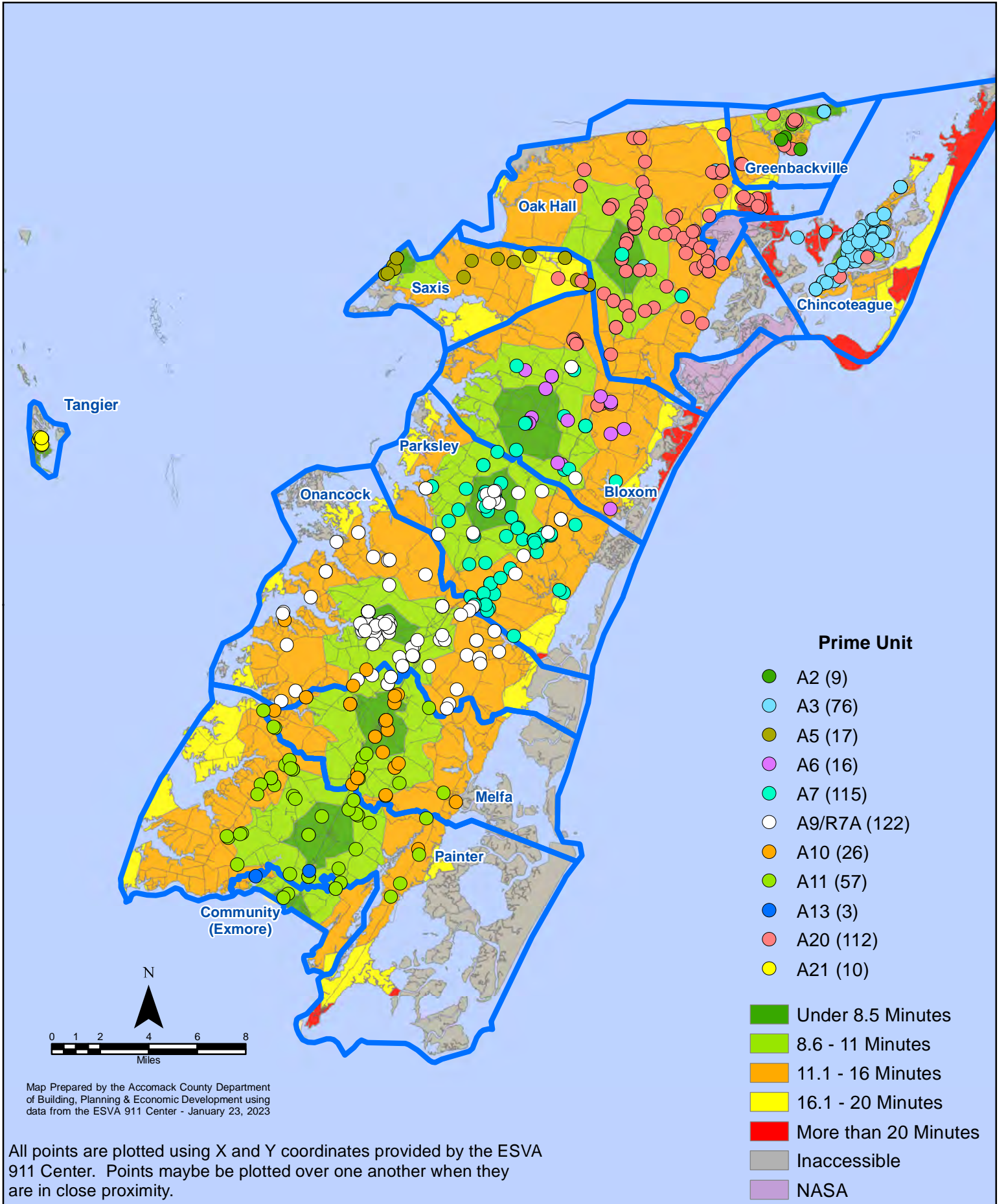
All points are plotted using X and Y coordinates provided by the ESVA 911 Center. Points may be plotted over one another when they are in close proximity.

Map Prepared by the Accomack County Department of Building, Planning & Economic Development using data from the ESVA 911 Center - January 23, 2023

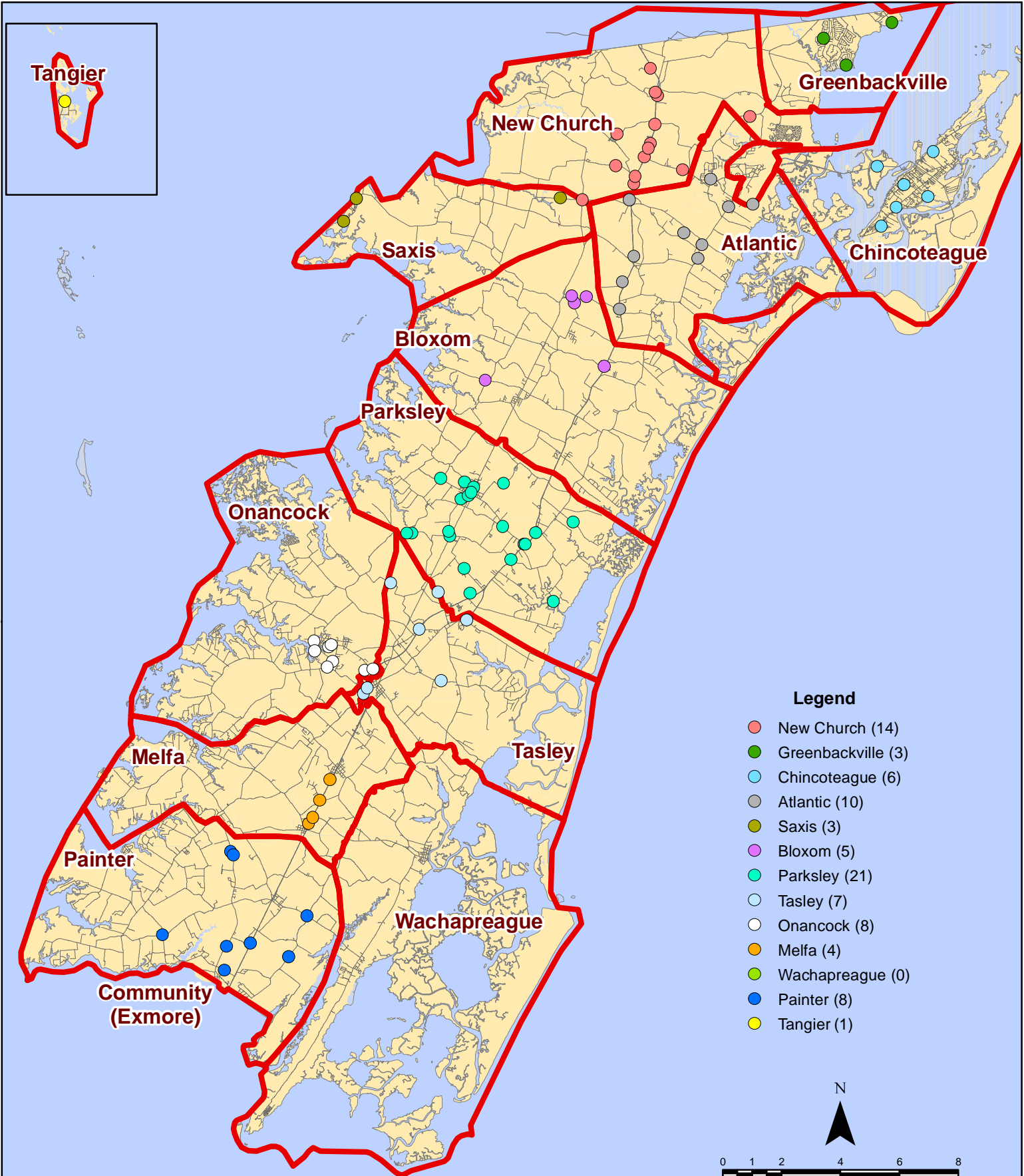
December 2022 EMS Calls By Prime Unit



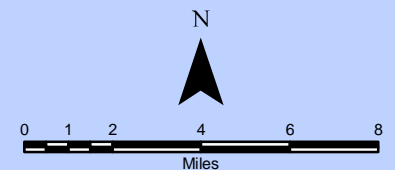
December 2022 EMS Calls By Prime Unit



December 2022 Fire Calls By District

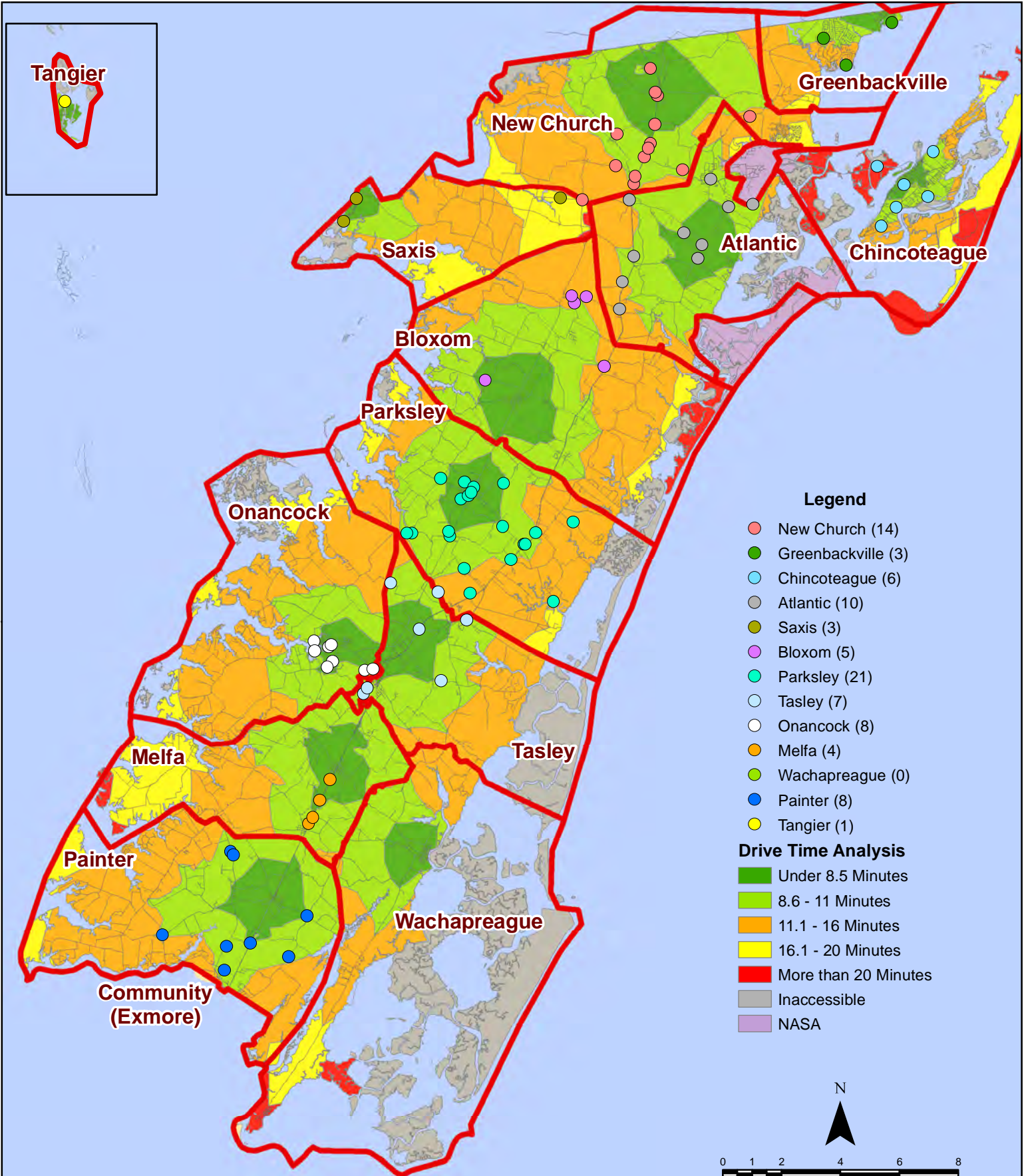


All points are plotted using X and Y coordinates provided by the ESVA 911 Center. Points may be plotted over one another when they are in close proximity.

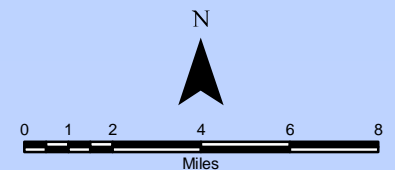


Map Prepared by the Accomack County Department of Building, Planning & Economic Development using data from the ESVA 911 Center - January 20, 2023

December 2022 Fire Calls By District

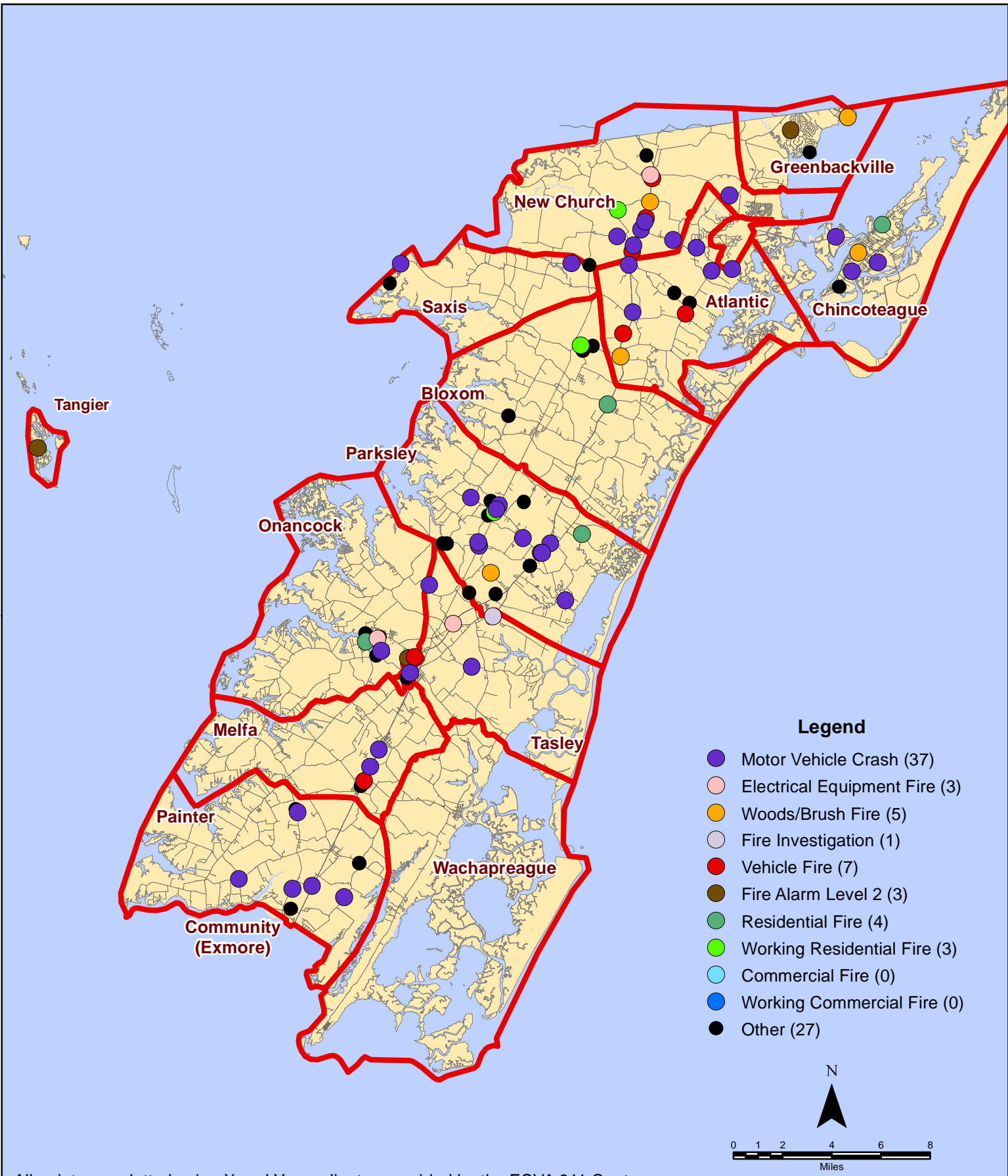


All points are plotted using X and Y coordinates provided by the ESVA 911 Center. Points may be plotted over one another when they are in close proximity.



Map Prepared by the Accomack County Department of Building, Planning & Economic Development using data from the ESVA 911 Center - January 20, 2023

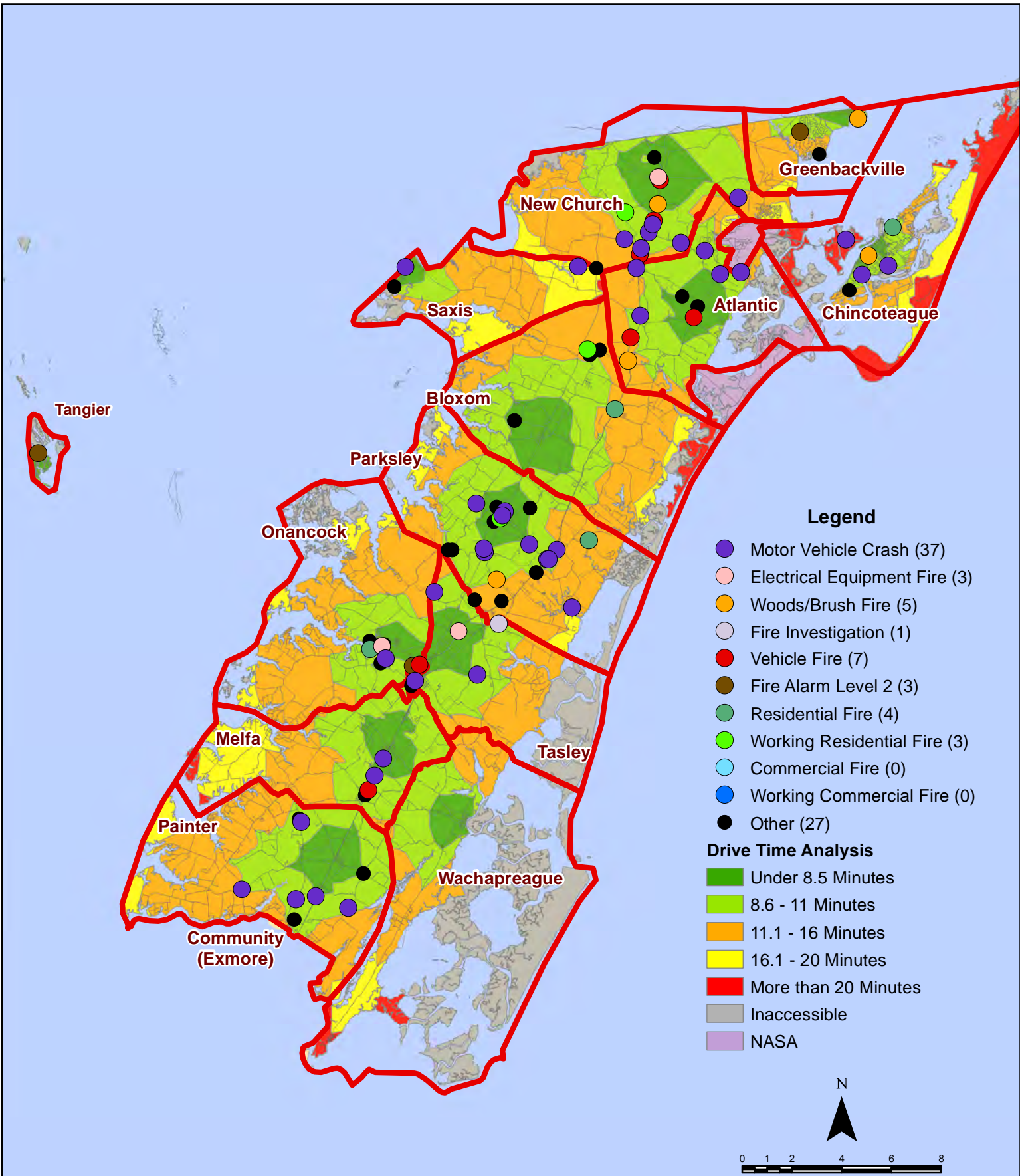
December 2022 Fire Calls By Type



All points are plotted using X and Y coordinates provided by the ESVA 911 Center. Points may be plotted over one another when they are in close proximity.

Map Prepared by the Accomack County Department of Building, Planning & Economic Development using data from the ESVA 911 Center - January 23, 2023

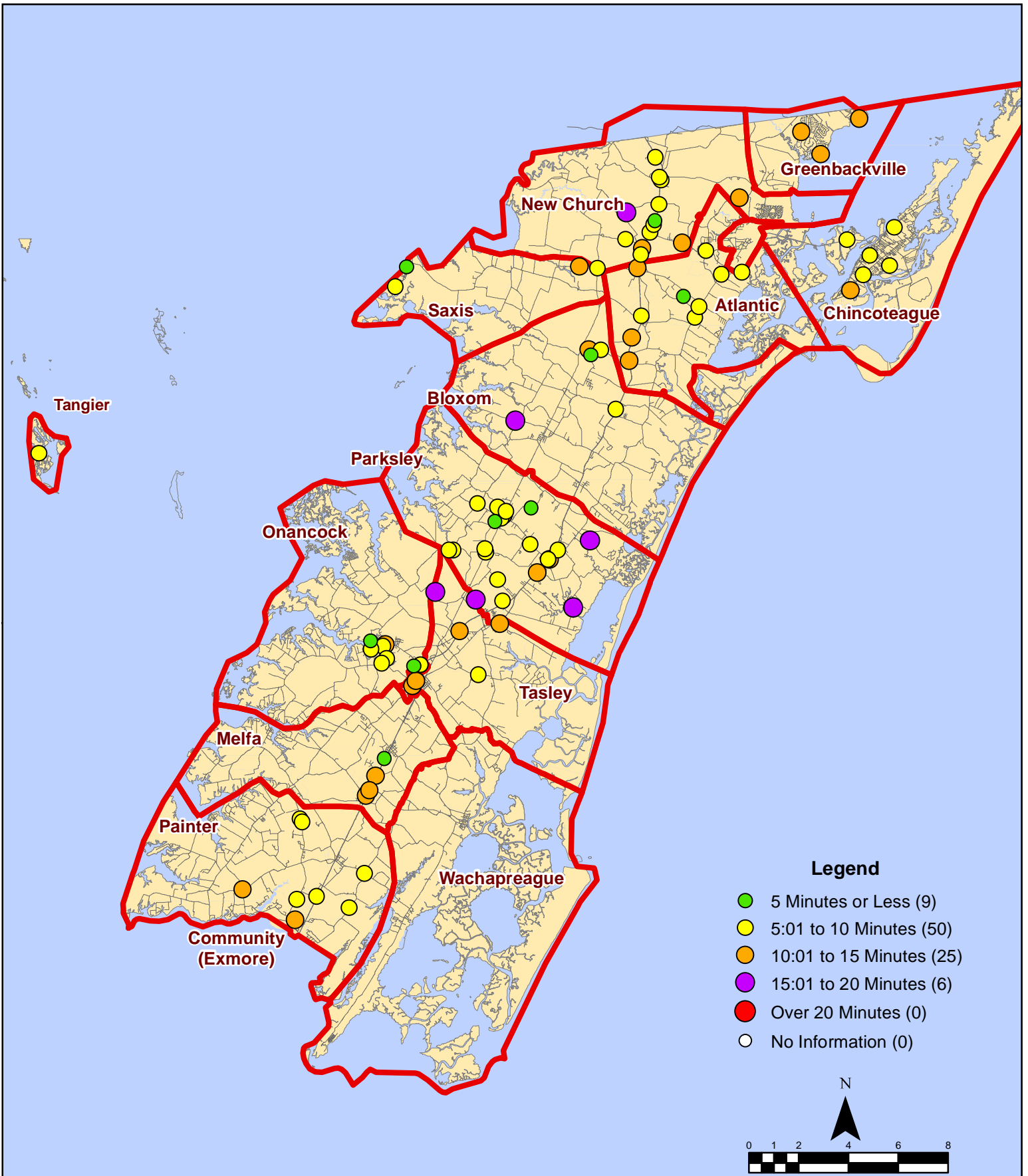
December 2022 Fire Calls By Type



All points are plotted using X and Y coordinates provided by the ESVA 911 Center. Points may be plotted over one another when they are in close proximity.

Map Prepared by the Accomack County Department of Building, Planning & Economic Development using data from the ESVA 911 Center - January 23, 2023

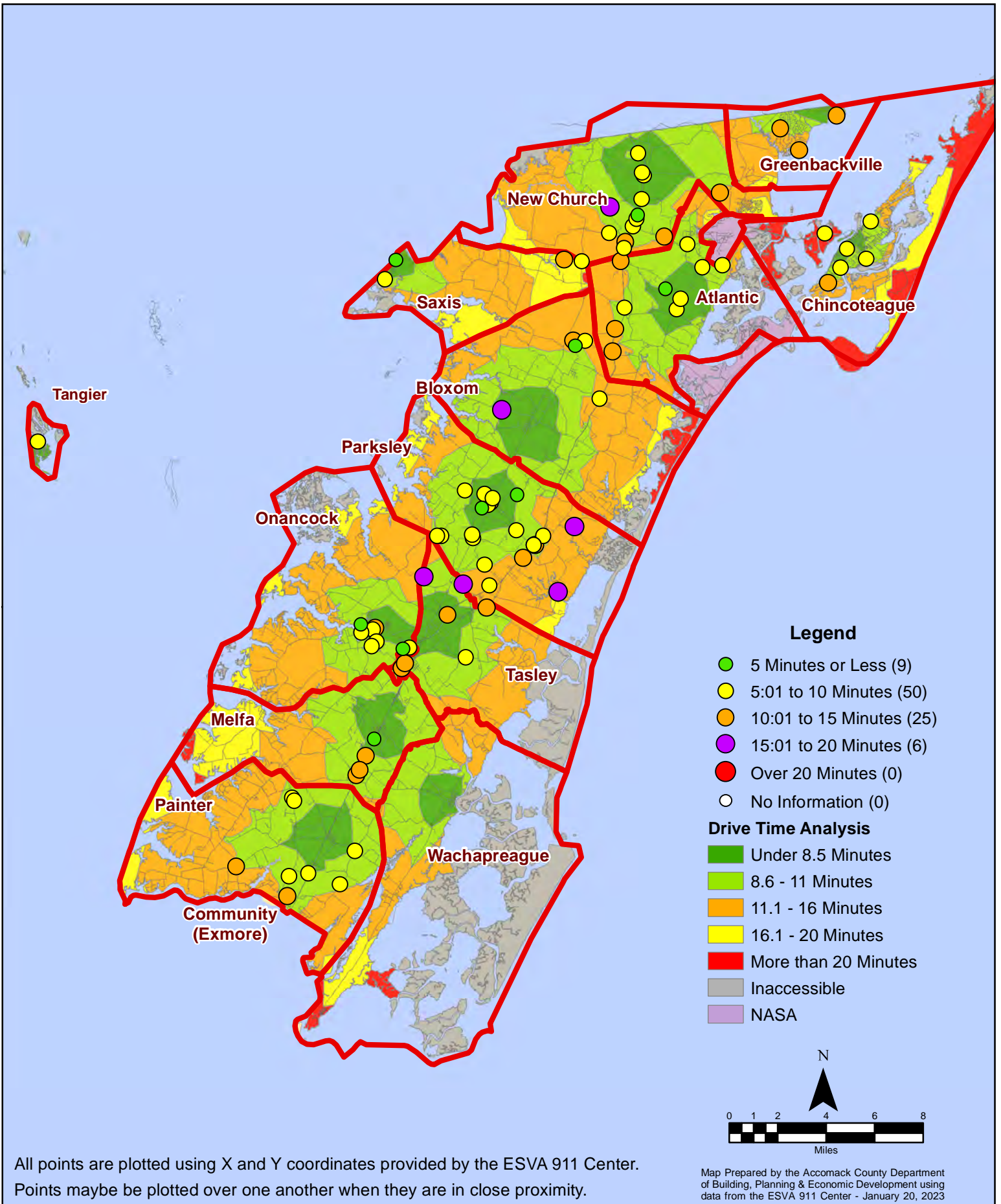
December 2022 Fire Calls By Response Time



All points are plotted using X and Y coordinates provided by the ESVA 911 Center. Points may be plotted over one another when they are in close proximity.

Map Prepared by the Accomack County Department of Building, Planning & Economic Development using data from the ESVA 911 Center - January 20, 2023

December 2022 Fire Calls By Response Time



All points are plotted using X and Y coordinates provided by the ESVA 911 Center. Points may be plotted over one another when they are in close proximity.