



COUNTY OF ACCOMACK

FINANCE DEPARTMENT

23296 Courthouse Ave – Suite 204|P.O. Box 620|Accomac, Virginia 23301
Telephone:(757) 787-5709 | Fax: (757) 787-2468

Margaret A. Lindsey
Director of Finance

TO: Potential Bidders for IFB #751 – Administration Building Entry

FROM: Lucy Huffman, Procurement Specialist

DATE: February 15, 2023

SUBJECT: **Addendum #1 – Additional Info and Questions from the Pre-Bid on 2/3/2023**
(2 pages)

General Notes/ Discussion from the Pre-bid Meeting:

- No path lighting required on this contract. (To be done by others.)
- All landscaping (from corner to corner on front) to be removed and replaced
- Contractor is responsible for underground public utility locating. The County will only be responsible for locating County owned utilities.
- County will remove power to light pole on west side if in the way of construction/ demo
- Contractor will work to limit front entrance building closure to “30 days”
- Brick pavers on front entryway to remain from columns to entry doors.
- No tax exemptions provided by County for contractor’s materials
- No Davis Bacon requirements for the project
- No lawn irrigation to consider
- Weekend and holiday work is permitted and encouraged.

Questions & Answers:

Q1- Can the footing for the steps remain?

A1- See existing stair detail on sheet A100

Q2- Are the columns sitting on the foundation?

A2- See existing stair detail on sheet A100

Q3- Will the County require a silt fence? Are there any other environmental requirements from the County?

A3-The disturbed area is slightly less than 2,500 sq ft. If the grass area between the sidewalks/street remains intact, no silt fence will be required. In the event of dirt washes onto paved areas, place hay bales in the path of runoff as a preventive measure.

Q4- Are fencing controls required for both sides of the project? Or at all?

A4- Fencing is not required

Q5-Will there be any requirement or restrictions from VDOT on the project?

A5- Any such requirement will be handled by the County.

Q6-Is an “expansion joint” to be used between the old brick and the new construction?

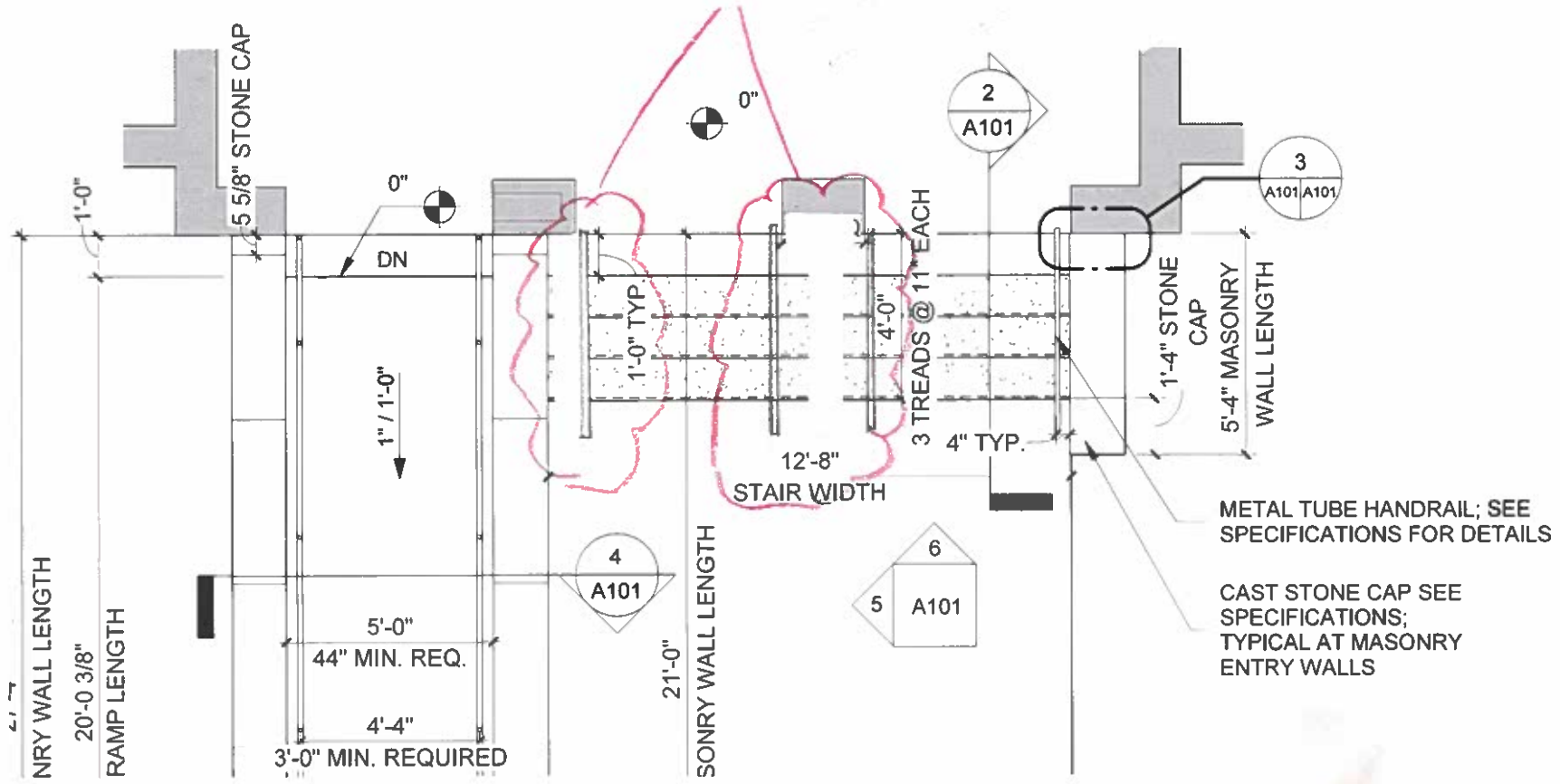
A6- See detail #2 on sheet A101

Additional Information:

See “Handrail Detail,” attached.

ALL *OTHER* SPECIFICATIONS AND TERMS & CONDITIONS REMAIN AS ISSUED IN THE ORIGINAL INVITATION FOR BIDS.

Install/align handrails in same fashion as shown in details 2/A101 and 3/A101



1/2" COI
JOIN
EX
BRICK P,