

August 2023

Fire - Performance Measure Data *					
Response District	Total Calls in District	Greater than 20 min. Response Time	Longest Response Time	Calls Handled by other agency	Overall Station Benchmark %
New Church	4	0	0:14:37	1	100.0%
Greenbackville	1	0	0:11:05	0	100.0%
Chincoteague	8	2	0:24:56	2	75.0%
Atlantic	8	0	0:14:42	0	100.0%
Saxis	3	0	0:18:33	1	100.0%
Bloxom	10	0	0:19:37	4	100.0%
Parksley	21	1	0:22:38	4	95.2%
Tasley	6	0	0:13:51	2	100.0%
Onancock	7	0	0:13:02	0	100.0%
Melfa	9	0	0:12:20	7	100.0%
Wachapreague	4	0	0:11:56	0	100.0%
Painter	5	0	0:12:59	0	100.0%
Tangier	2	0	0:15:54	0	100.0%
System Totals	88	3	0:24:56	21	96.6%

EMS - Performance Measure Data						
Response District	Total Calls in District	Greater than 20 min. Response Time	Longest Response Time	Calls Handled by other agency	Station Benchmark Compliance %	Overall Station Reliability %
Greenbackville	17	2	0:24:00	8	88.2%	52.9%
Chincoteague	109	1	0:24:51	12	99.1%	89.0%
Saxis	16	0	0:18:41	5	100.0%	68.8%
Bloxom	52	1	0:26:04	46	98.1%	11.5%
Parksley	106	0	0:14:37	1	100.0%	99.1%
Onancock	72	1	0:25:52	2	98.6%	97.2%
Melfa	36	1	0:22:28	14	97.2%	61.1%
Wachapreague (Painter)	49	1	0:20:36	0	98.0%	100.0%
Oak Hall	101	2	0:24:17	2	98.0%	98.0%
Tangier	11	0	0:09:13	0	100.0%	100.0%
Community (Exmore)	7	0	0:11:41	2	100.0%	71.4%
System Totals	576	9	0:26:04	92	98.4%	84.0%

EMS Mutual Aid Data															
	Station Giving Aid											NORS	2nd Call	3rd Call	
	Greenbackville	Chincoteague	Saxis	Bloxom	Parksley	Onancock	Melfa	Wachapreague/Painter	Oak Hall	Community (Exmore)	Northampton				Wallops
Greenbackville								8					8		
Chincoteague	8							4					1	9	2
Saxis								5					5		
Bloxom					38			8					46		
Parksley				1											1
Onancock					2									2	
Melfa						9		4	1				14		
Wachapreague (Painter)															
Oak Hall				1		1							1		1
Community (Exmore)							1	1					2		
Northampton Co.															
Wallops															
Totals	8	0	0	2	40	10	1	5	25	1	0	0	77	11	4

Transport Destination			
Hospital Destination by Unit	Riverside - Shore Memorial	PRMC / Tidal Health	Other
Chincoteague	16	30	
Saxis	5	4	
Bloxom	2	1	
Parksley	107	3	
Onancock	58		
Melfa	15		
Wachapreague (Painter)	45		
Oak Hall	61	27	2
Wallops			
Totals	312	69	3

Benchmark = The Accomack County Board of Supervisors established a 20 minute standard for emergency response.

NORS = No Response by station or the call was handled by another station or agency.

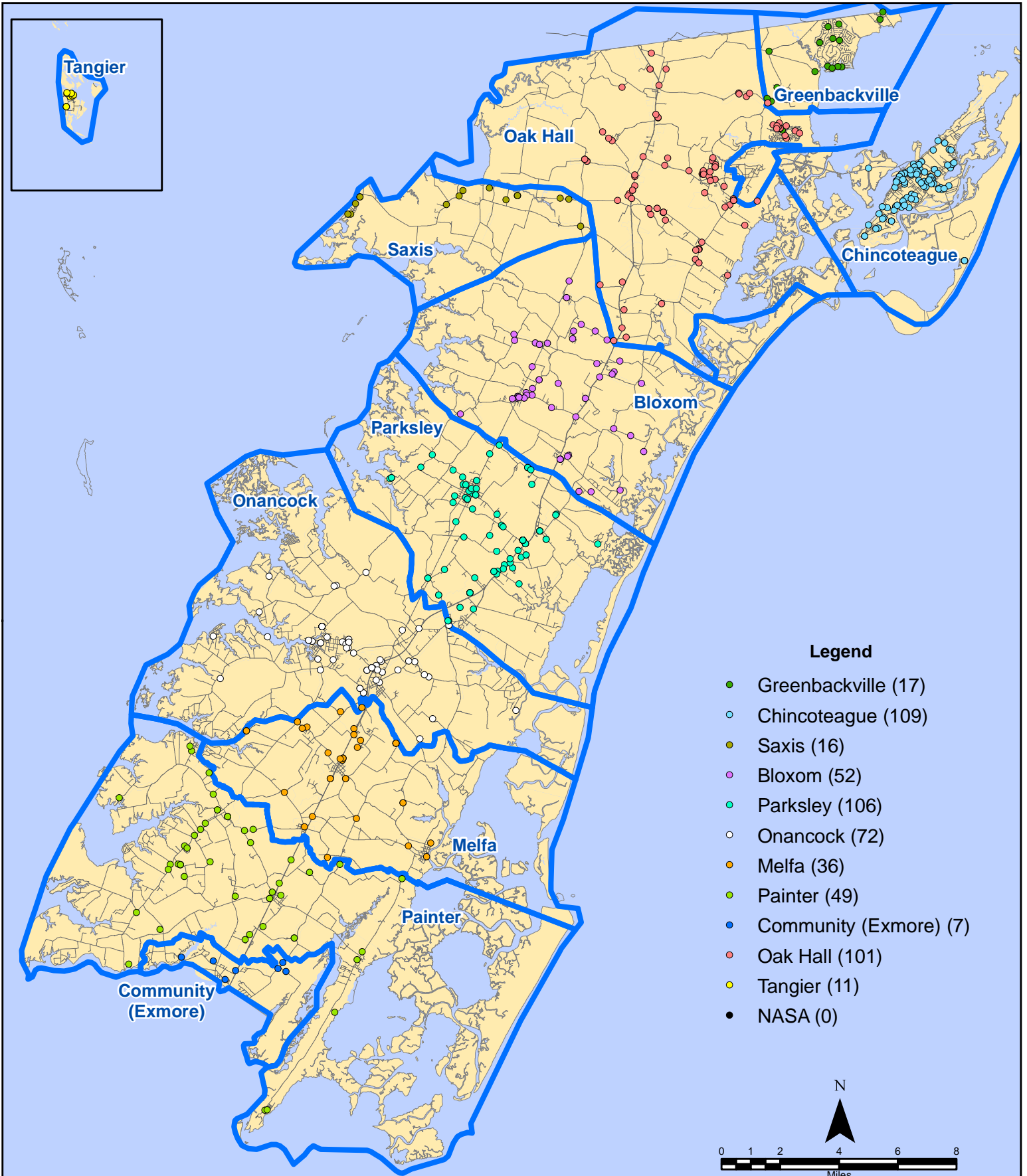
2nd Call = 2nd ambulance call received while first ambulance was on another call.

3rd Call = 3rd ambulance call received while first & second ambulances were on other calls.

* This data excludes F1 Med (Medical Assist) calls in the Fire Data.

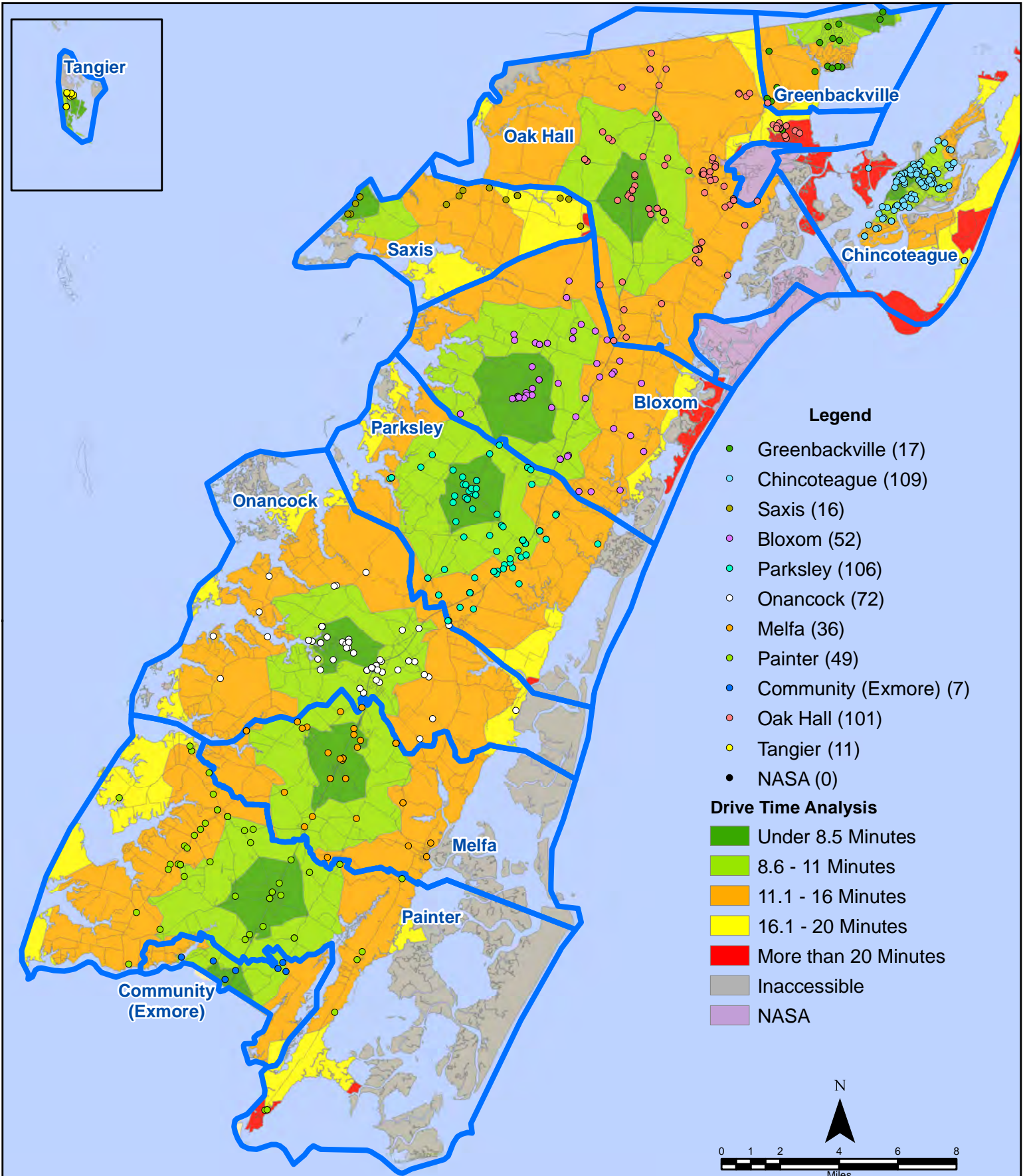
This information was prepared using data supplied by the Eastern Shore of Virginia 911 Center. This information is original incident data only and may not be representative of all units and/or stations who responded to an incident.

August 2023 EMS Calls By District



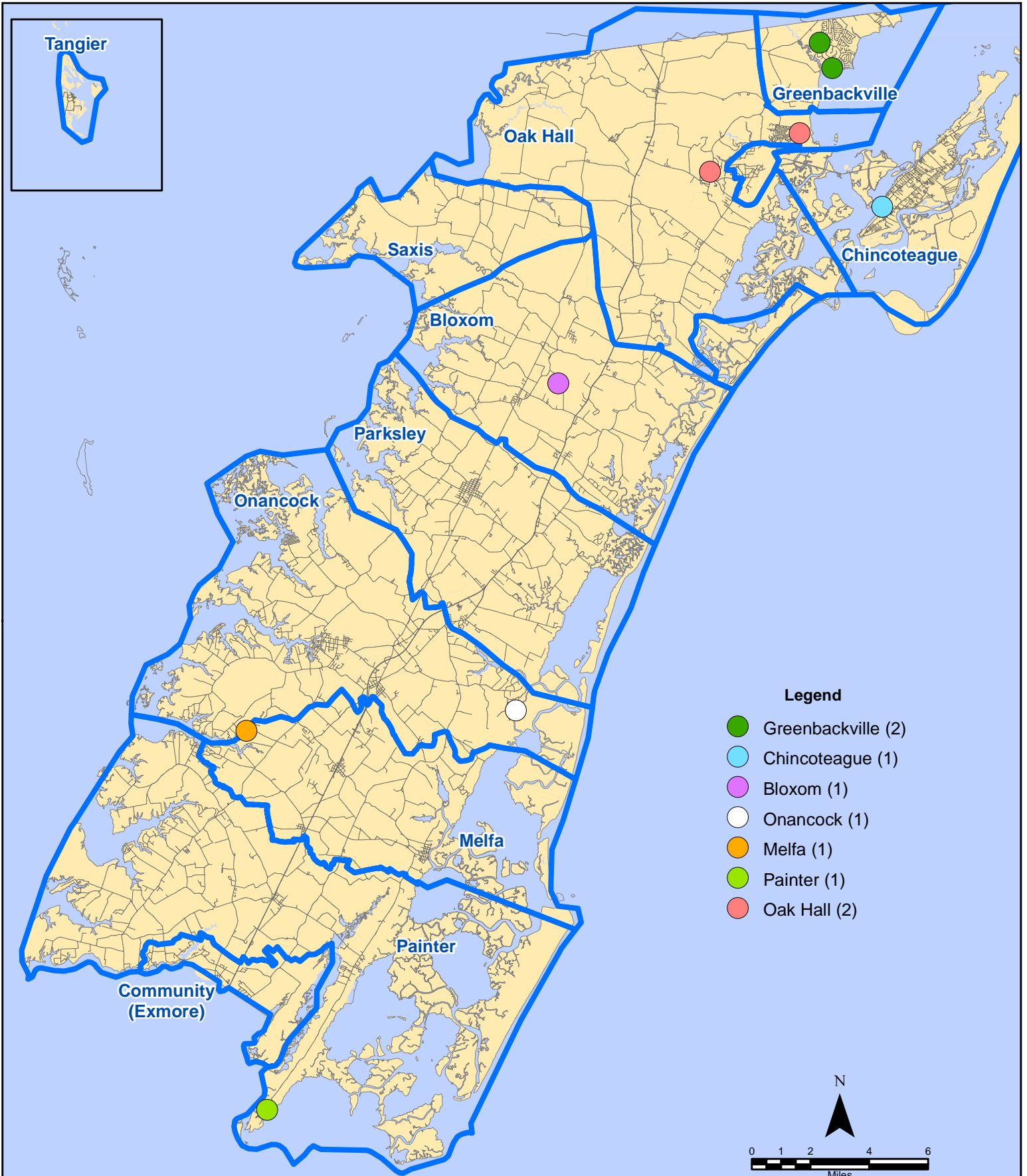
All points are plotted using X and Y coordinates provided by the ESVA 911 Center.
Points may be plotted over one another when they are in close proximity.

August 2023 EMS Calls By District



All points are plotted using X and Y coordinates provided by the ESVA 911 Center. Points may be plotted over one another when they are in close proximity.

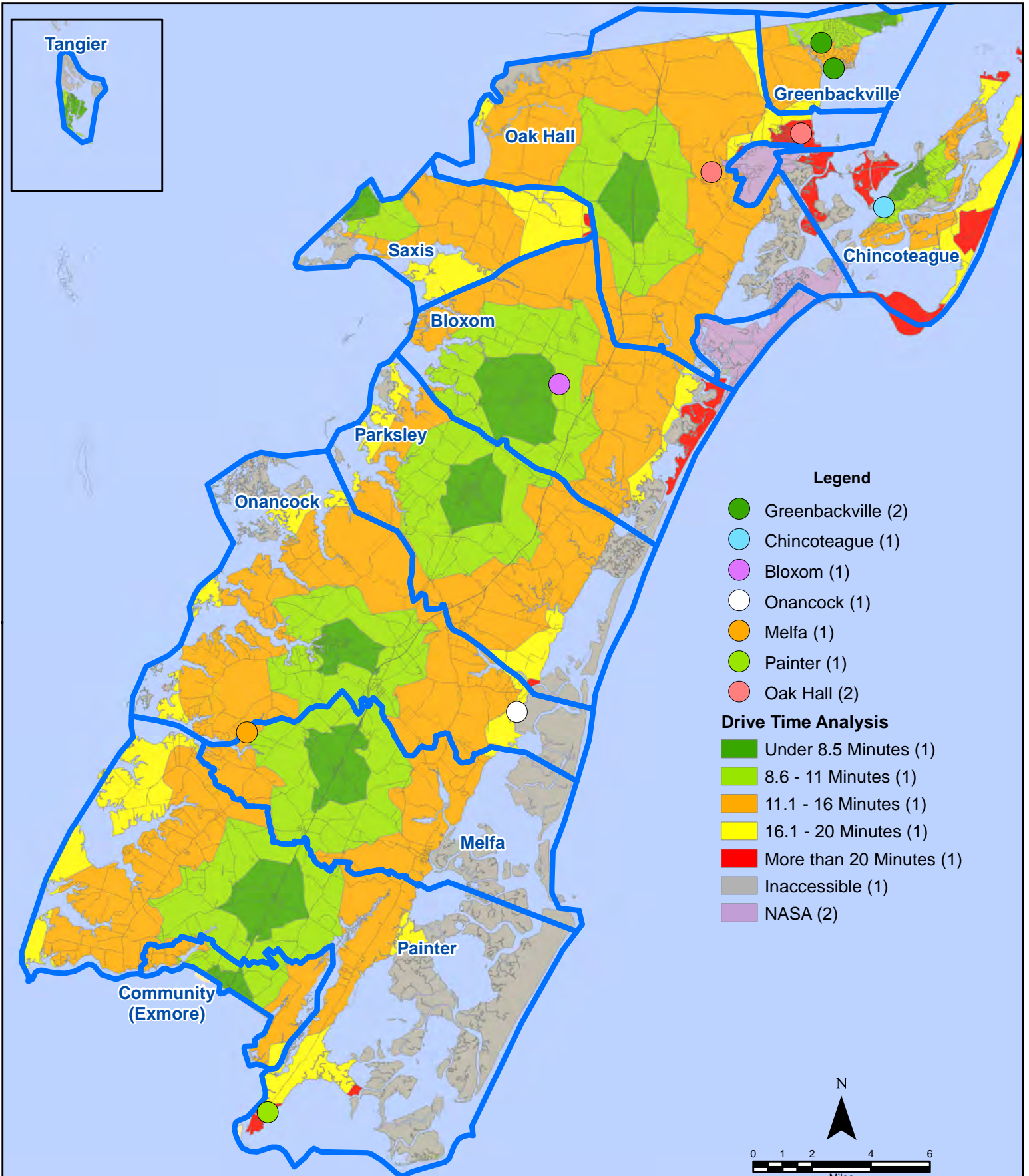
August 2023 EMS Calls With Response Time Greater Than 20 Mins.



All points are plotted using X and Y coordinates provided by the ESVA 911 Center. Points may be plotted over one another when they are in close proximity.

Map Prepared by the Accomack County Department of Building, Planning & Economic Development using data from the ESVA 911 Center - October 3, 2023

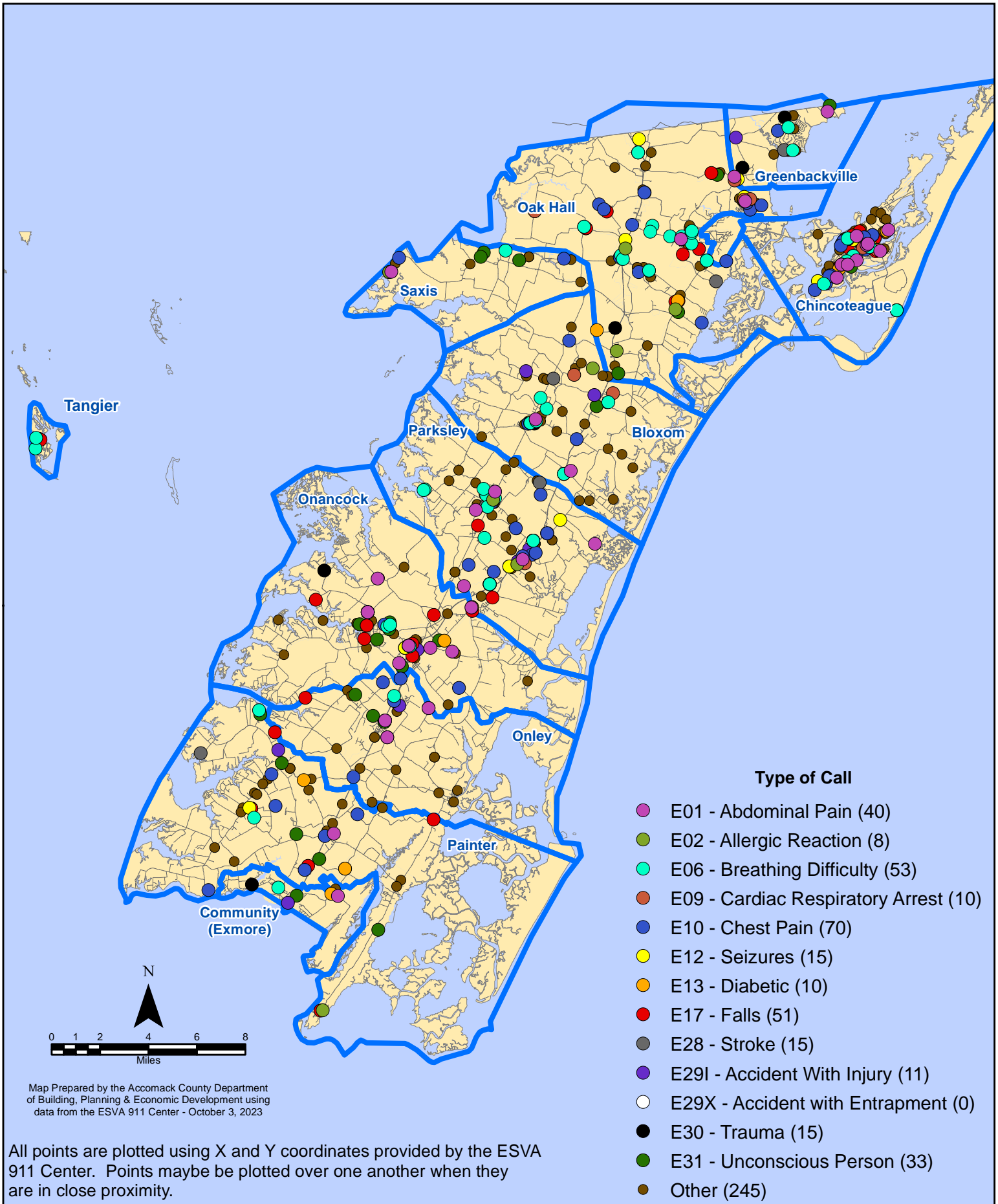
August 2023 EMS Calls With Response Time Greater Than 20 Mins.



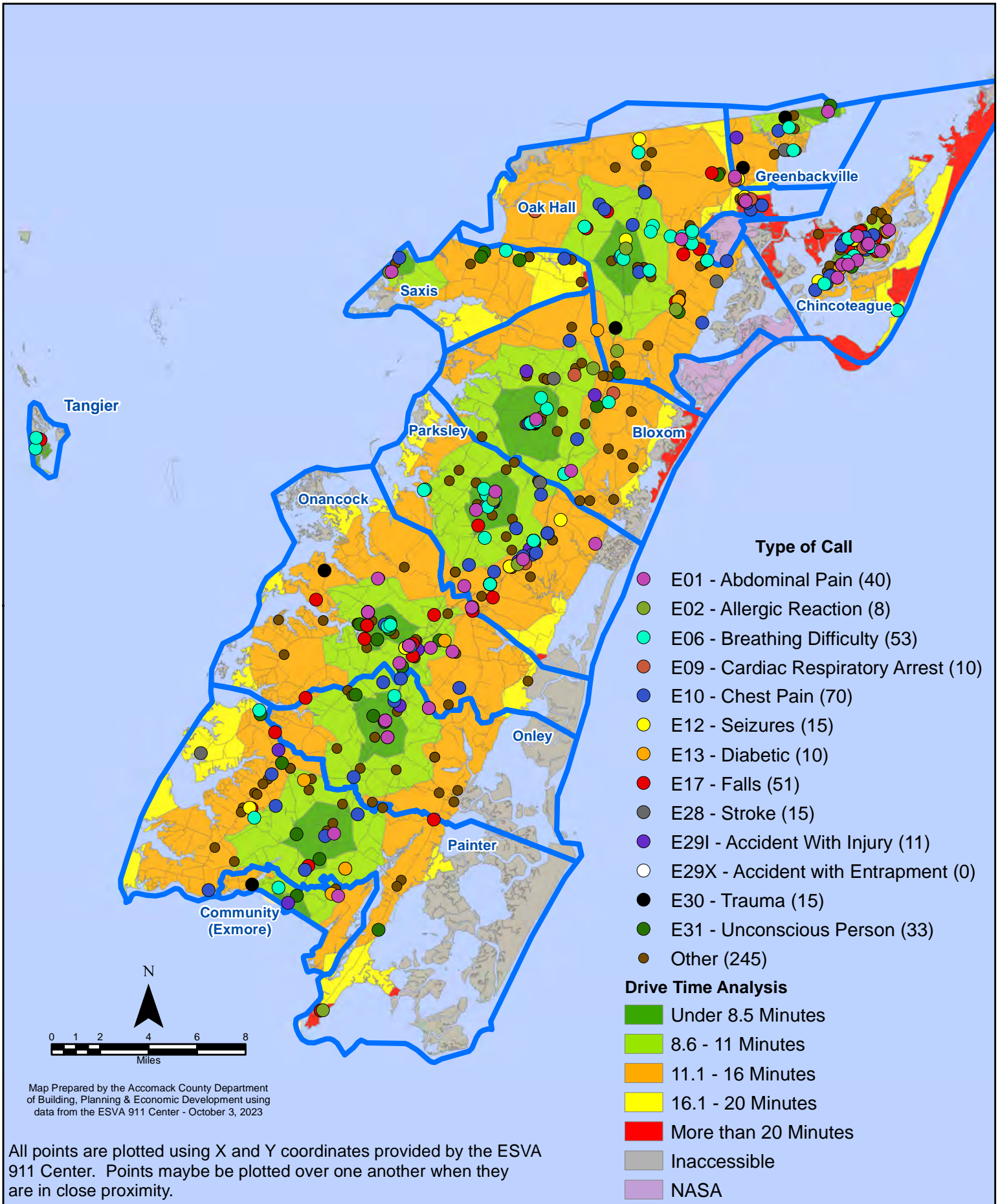
All points are plotted using X and Y coordinates provided by the ESVA 911 Center. Points may be plotted over one another when they are in close proximity.

Map Prepared by the Accomack County Department of Building, Planning & Economic Development using data from the ESVA 911 Center - October 3, 2023

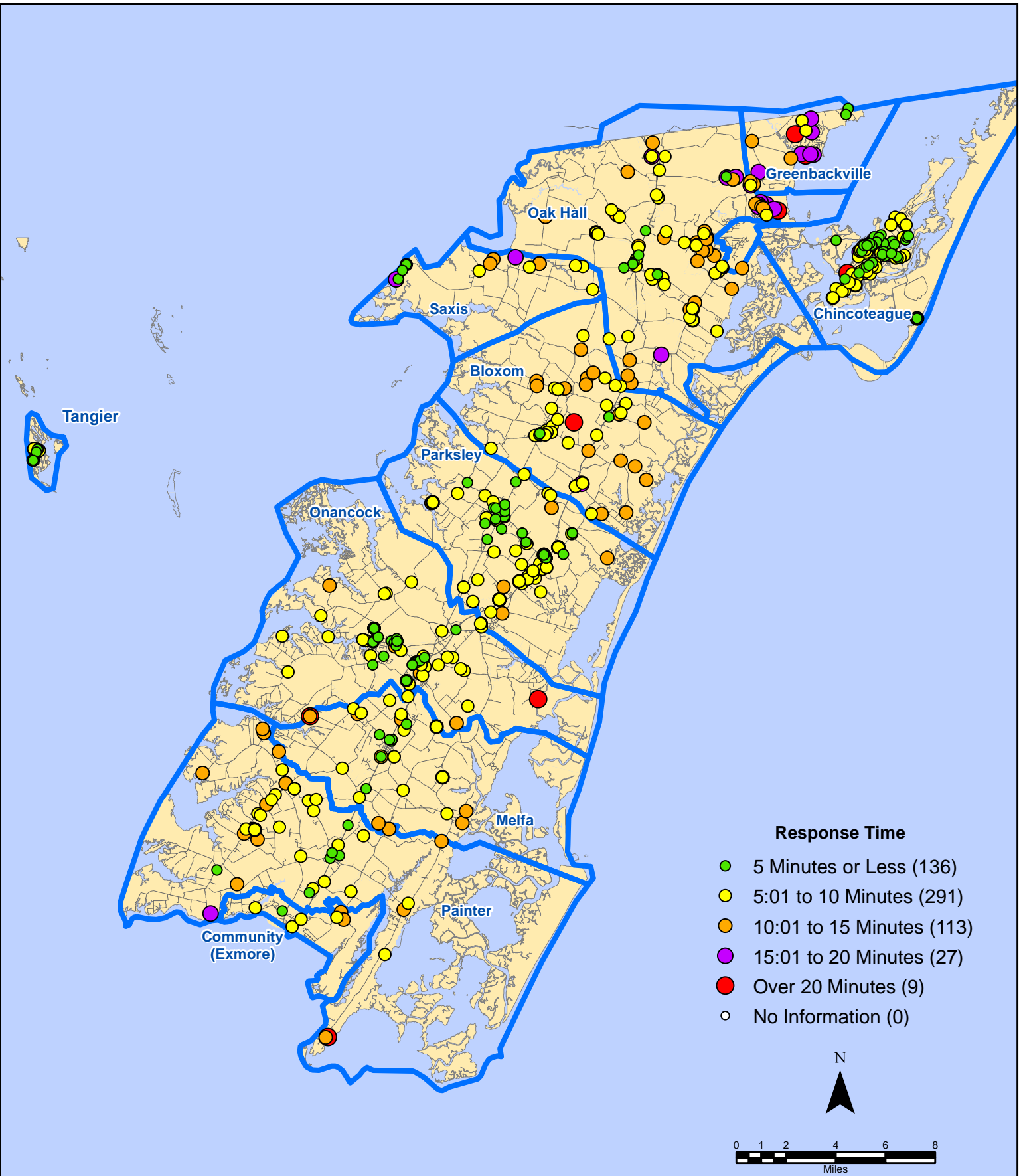
August 2023 EMS Calls By Type



August 2023 EMS Calls By Type



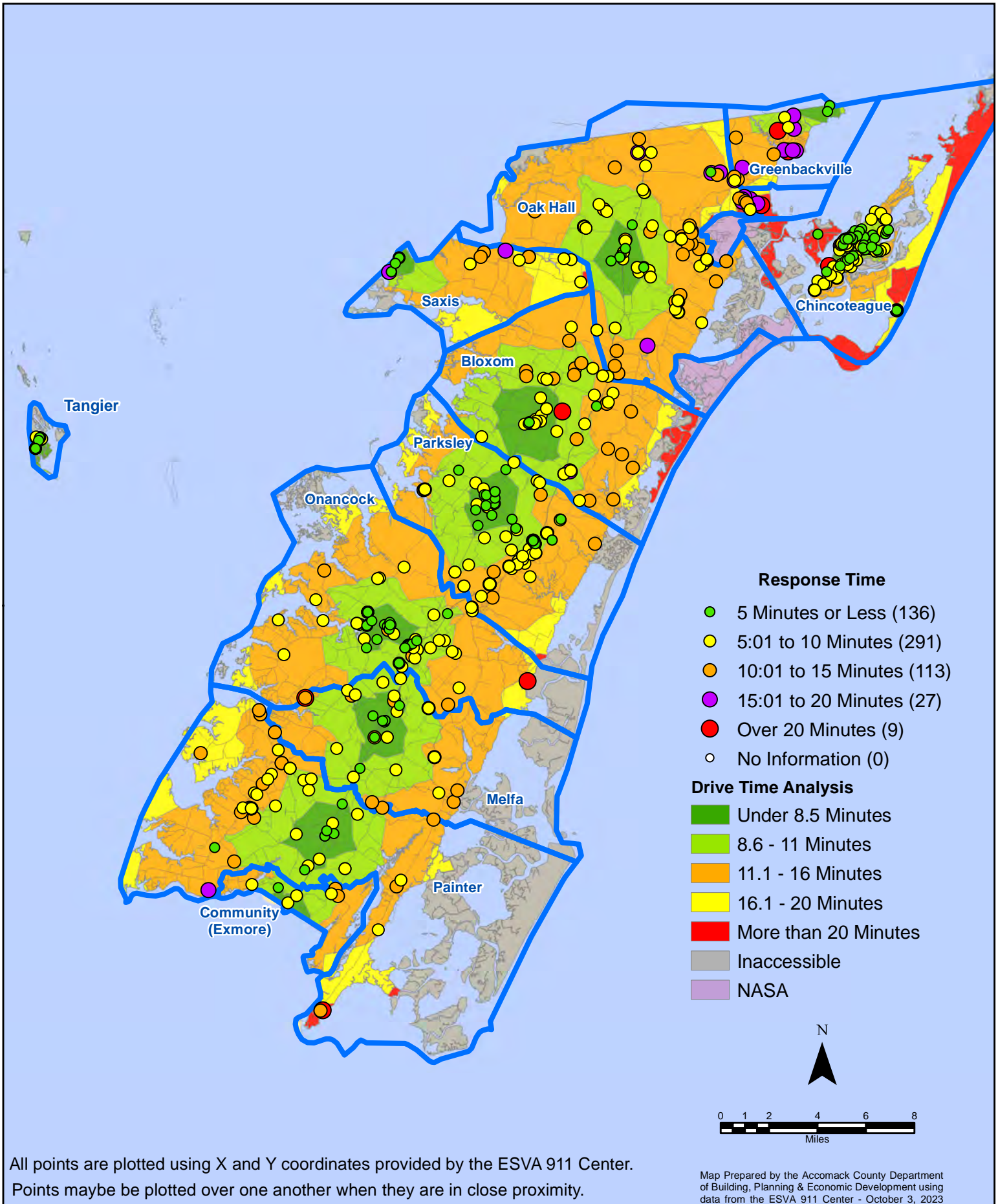
August 2023 EMS Calls By Response Time



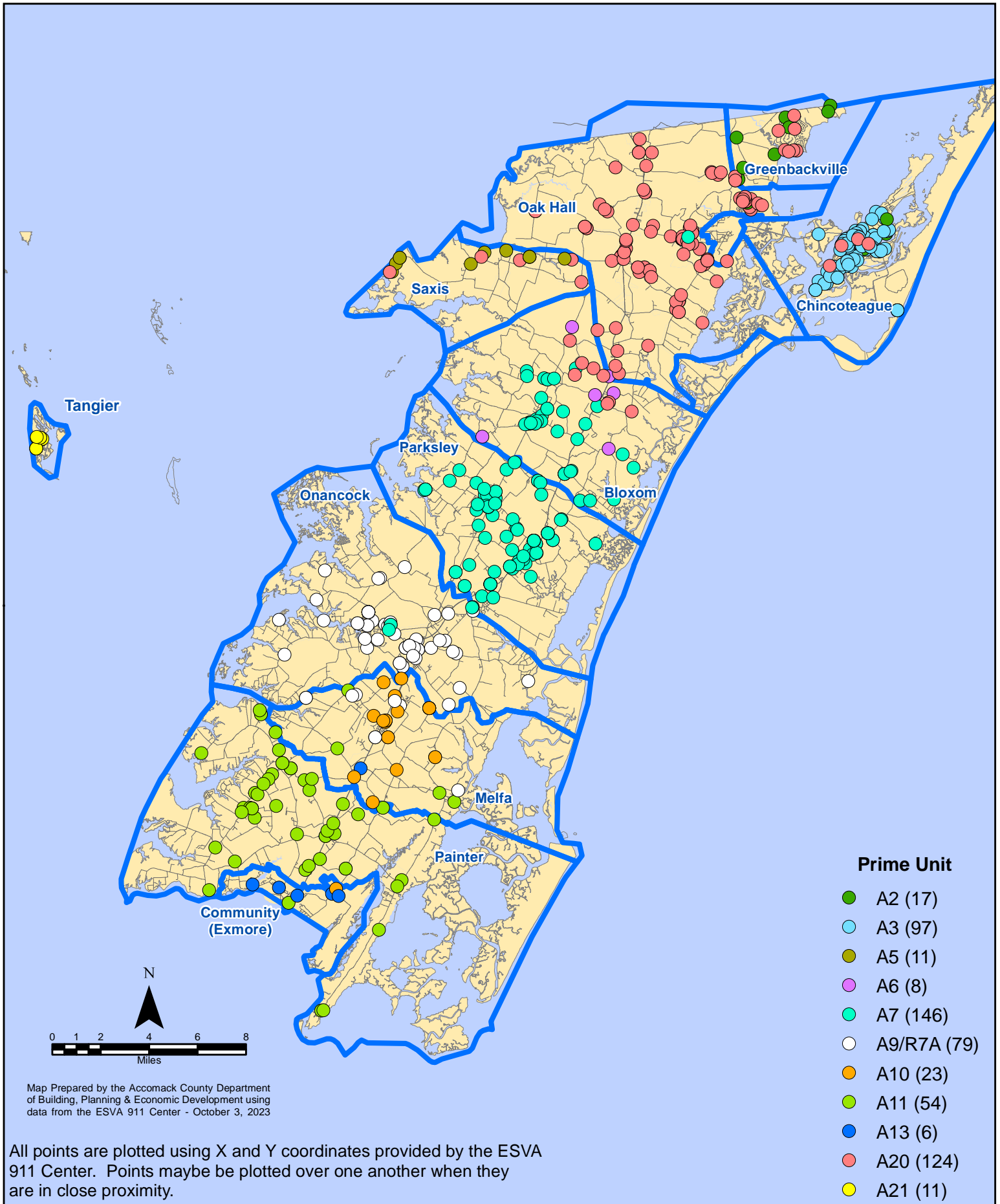
All points are plotted using X and Y coordinates provided by the ESVA 911 Center.
Points may be plotted over one another when they are in close proximity.

Map Prepared by the Accomack County Department of Building, Planning & Economic Development using data from the ESVA 911 Center - October 3, 2023

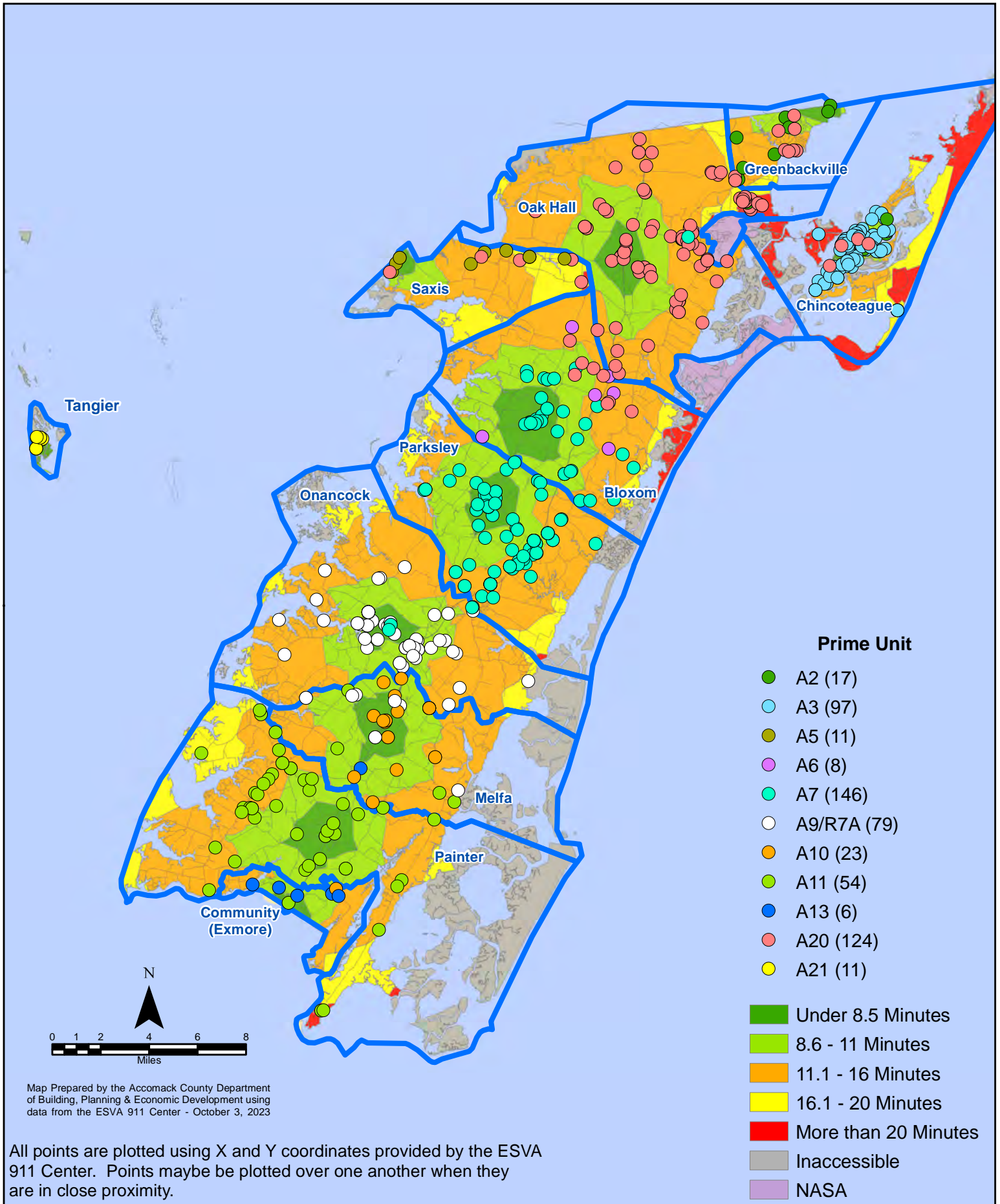
August 2023 EMS Calls By Response Time



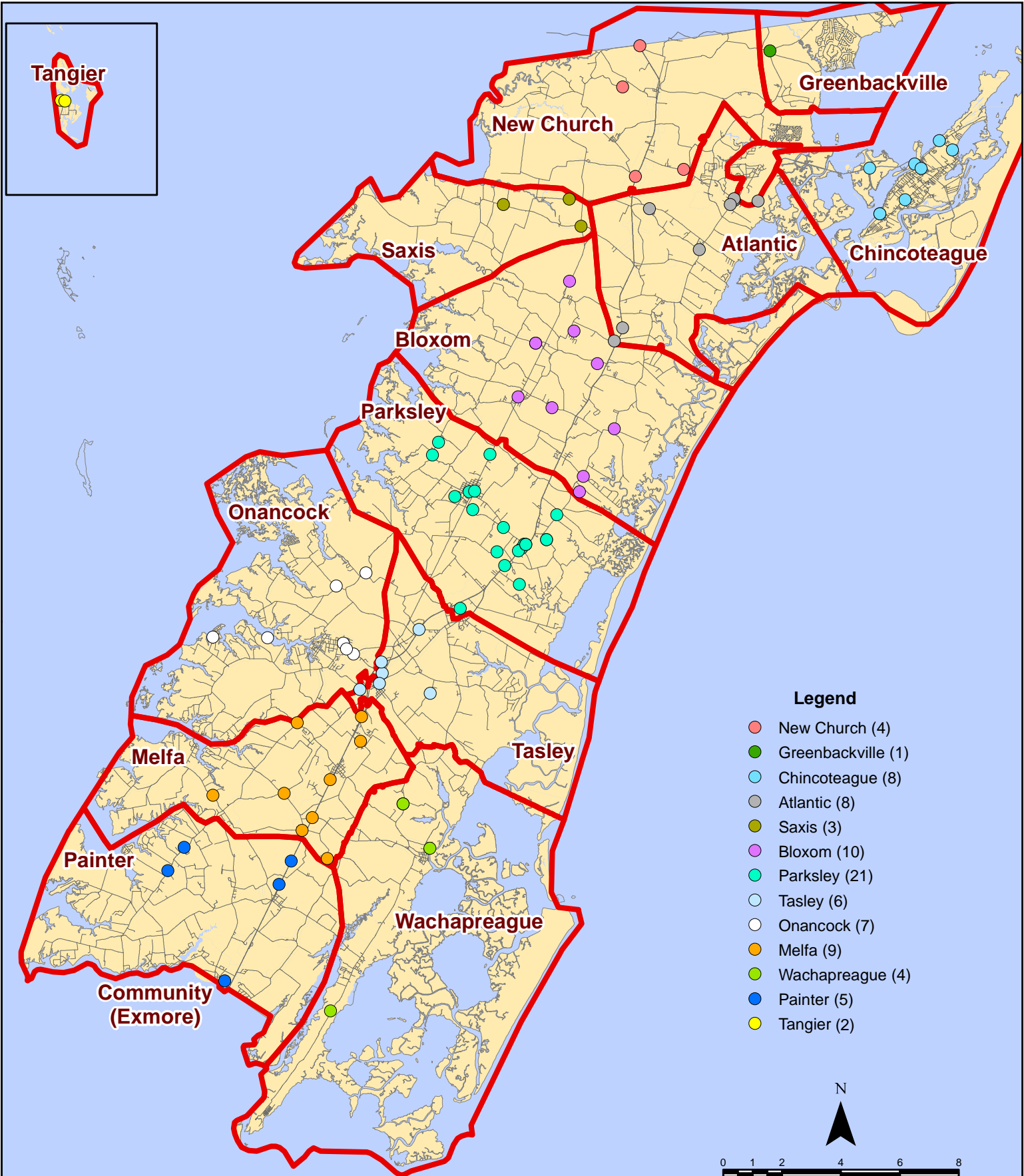
August 2023 EMS Calls By Prime Unit



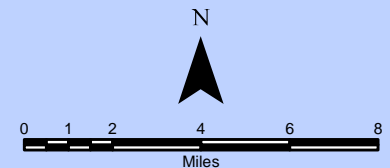
August 2023 EMS Calls By Prime Unit



August 2023 Fire Calls By District

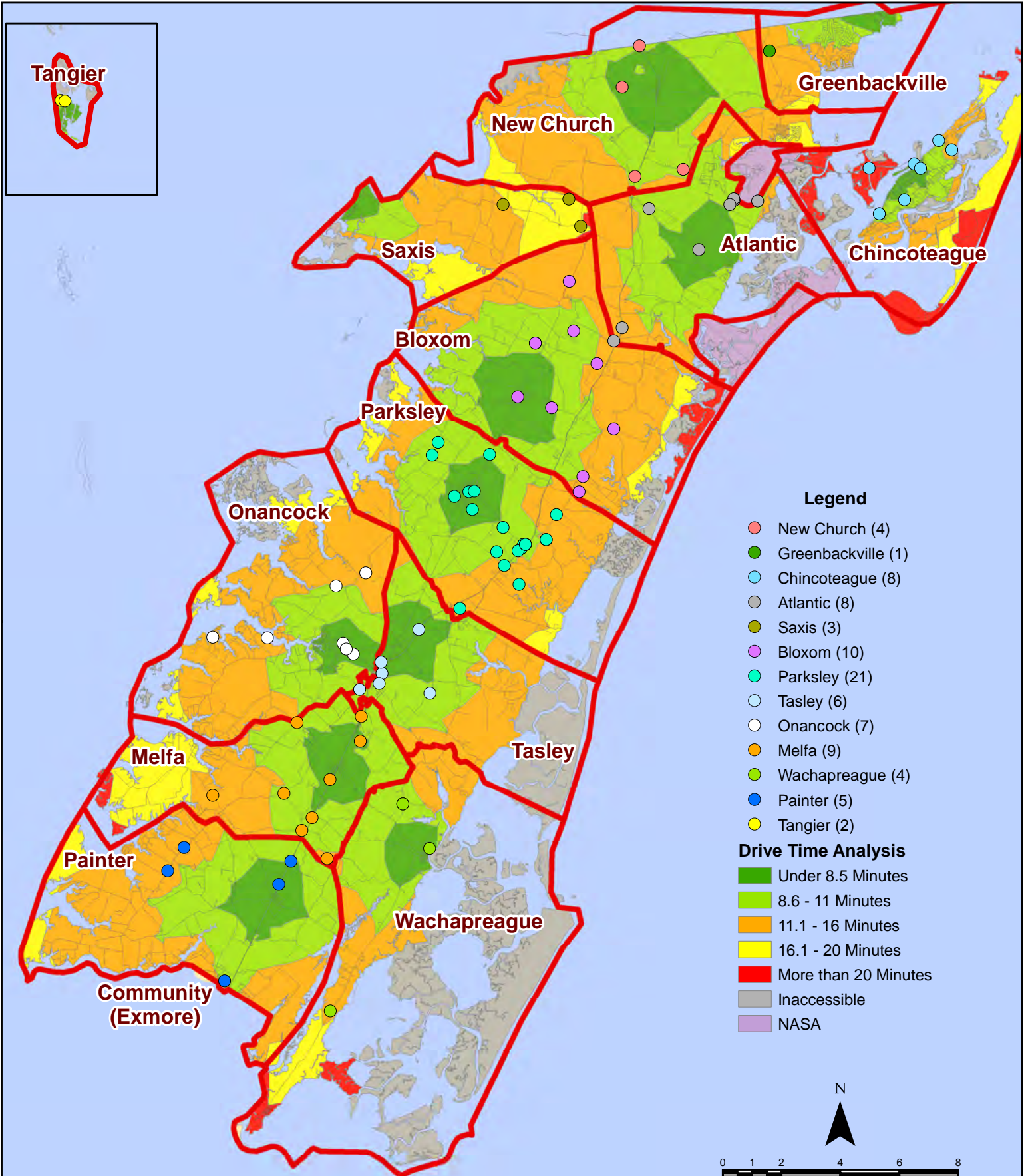


All points are plotted using X and Y coordinates provided by the ESVA 911 Center. Points may be plotted over one another when they are in close proximity.

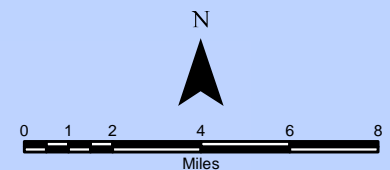


Map Prepared by the Accomack County Department of Building, Planning & Economic Development using data from the ESVA 911 Center - October 3, 2023

August 2023 Fire Calls By District

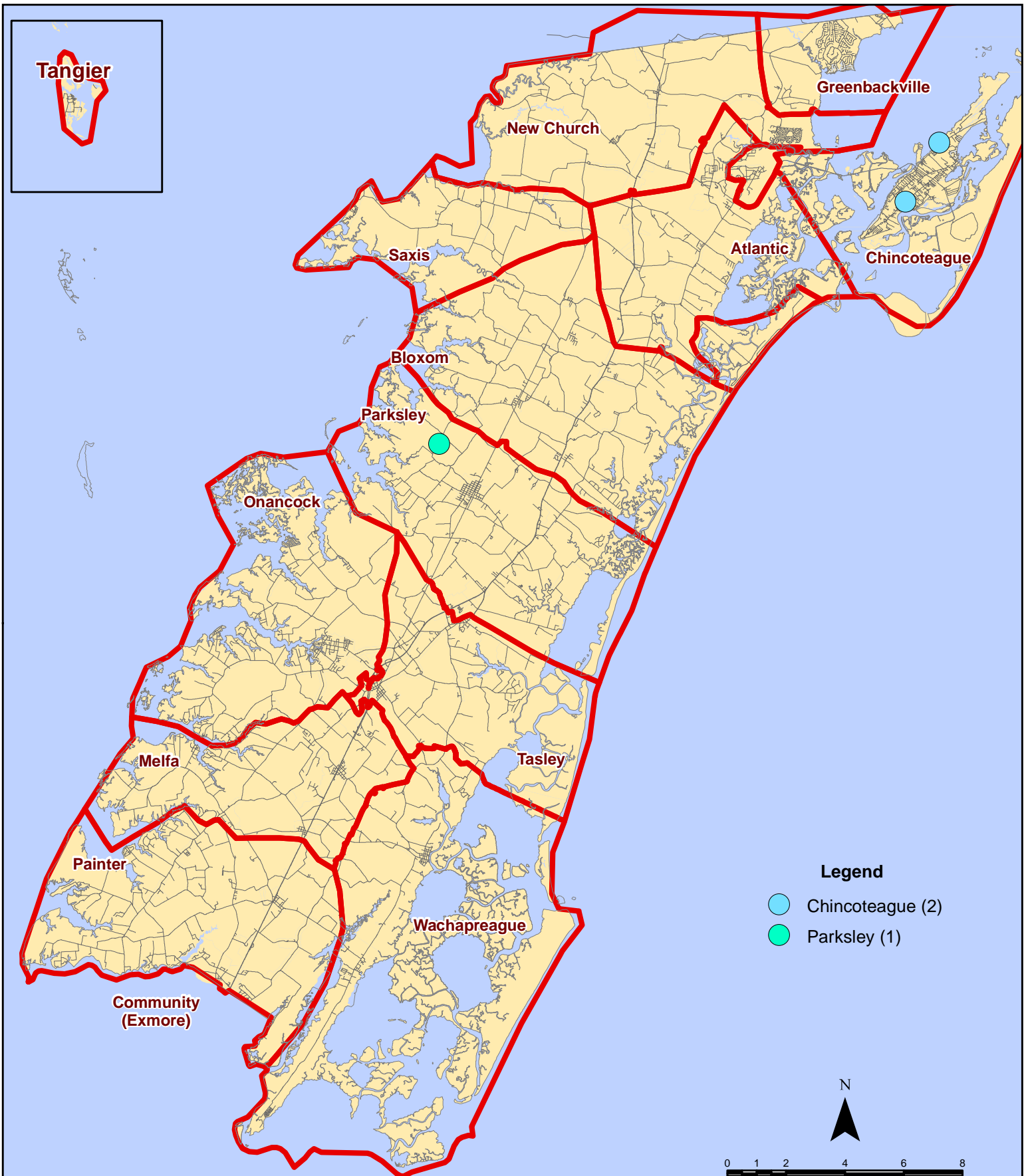


All points are plotted using X and Y coordinates provided by the ESVA 911 Center. Points may be plotted over one another when they are in close proximity.



Map Prepared by the Accomack County Department of Building, Planning & Economic Development using data from the ESVA 911 Center - October 3, 2023

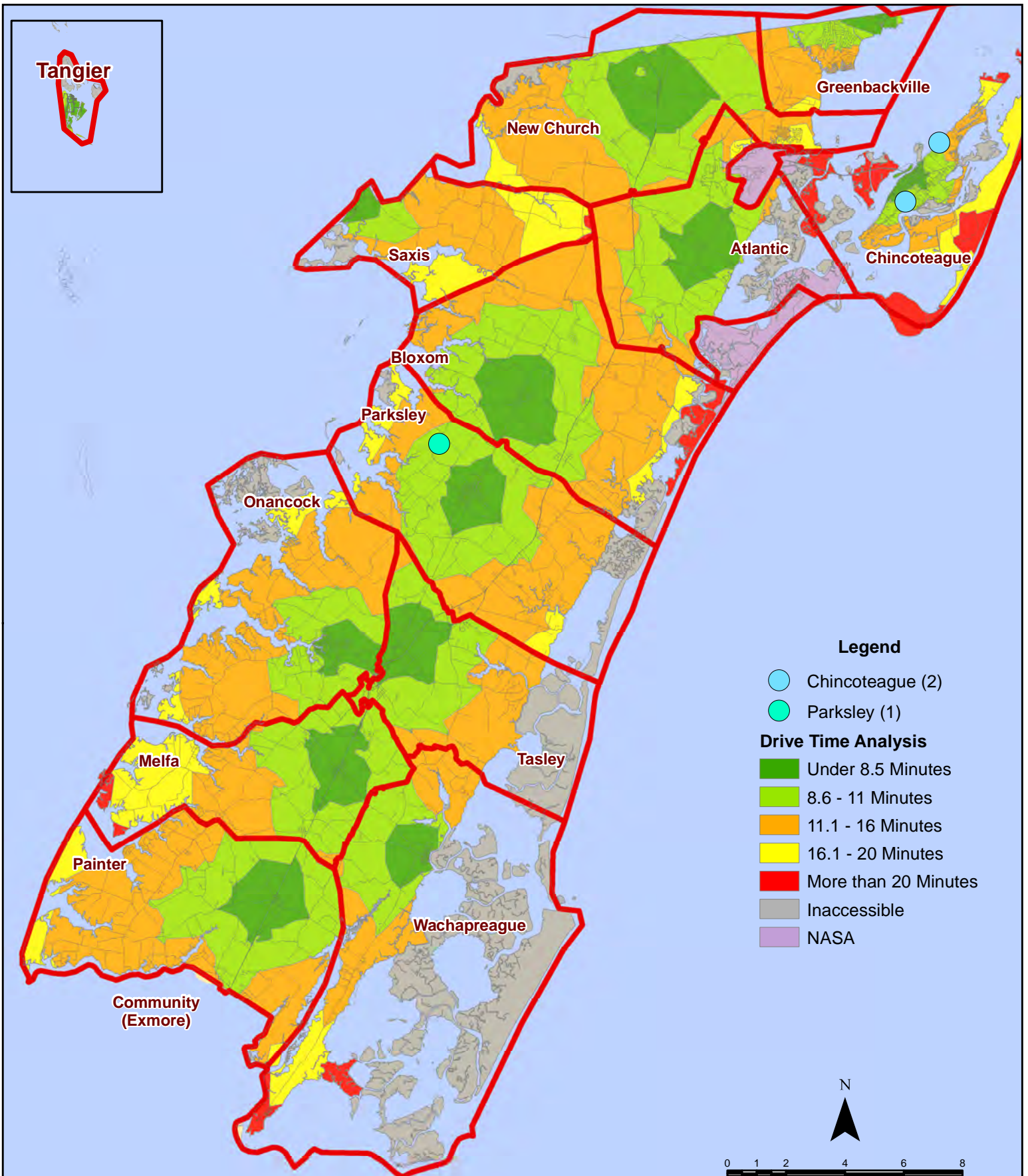
August 2023 Fire Calls With Response Time Greater Than 20 Mins.



All points are plotted using X and Y coordinates provided by the ESVA 911 Center. Points may be plotted over one another when they are in close proximity.

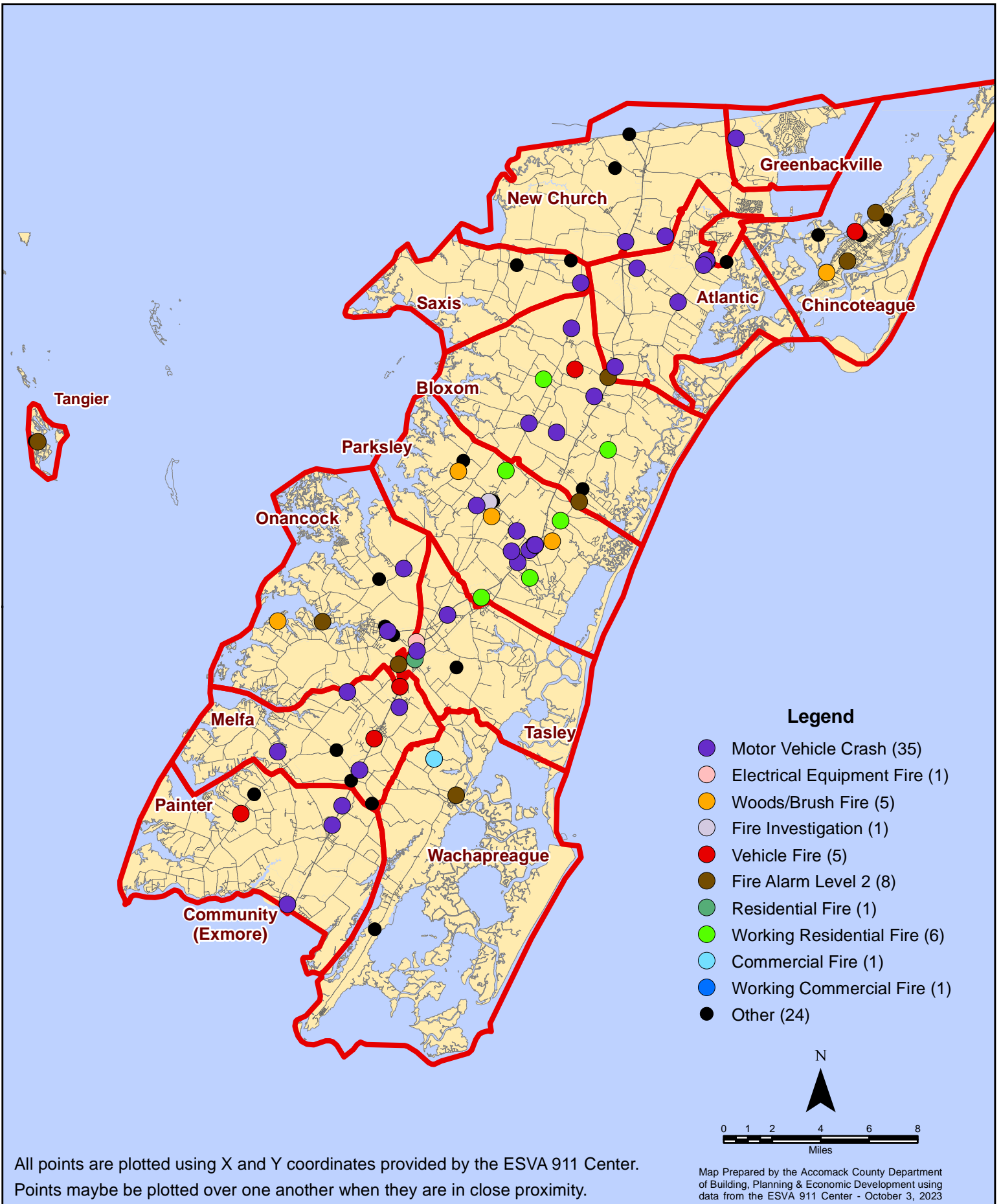
Map Prepared by the Accomack County Department of Building, Planning & Economic Development using data from the ESVA 911 Center - October 3, 2023

August 2023 Fire Calls With Response Time Greater Than 20 Mins.

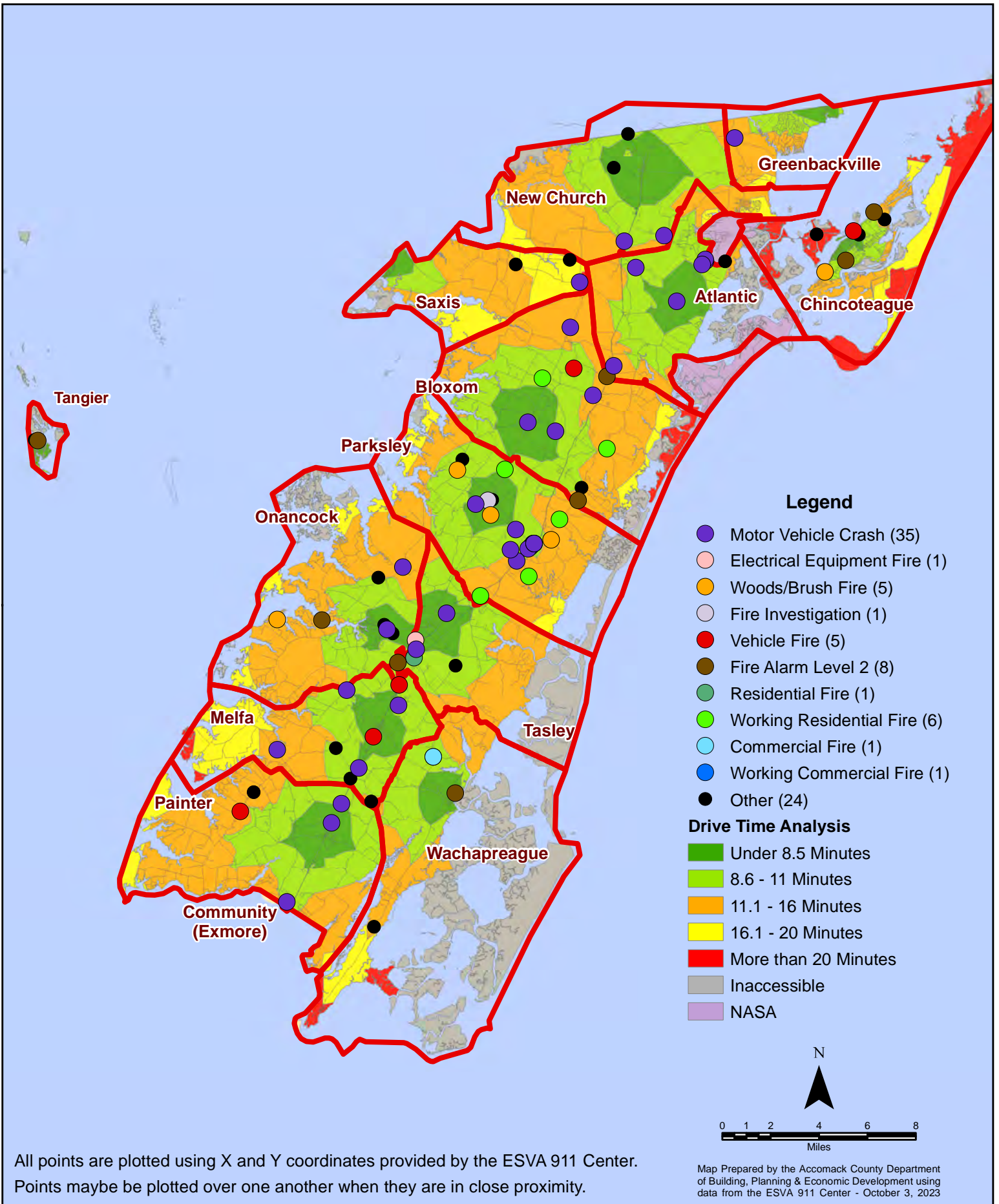


All points are plotted using X and Y coordinates provided by the ESVA 911 Center. Points may be plotted over one another when they are in close proximity.

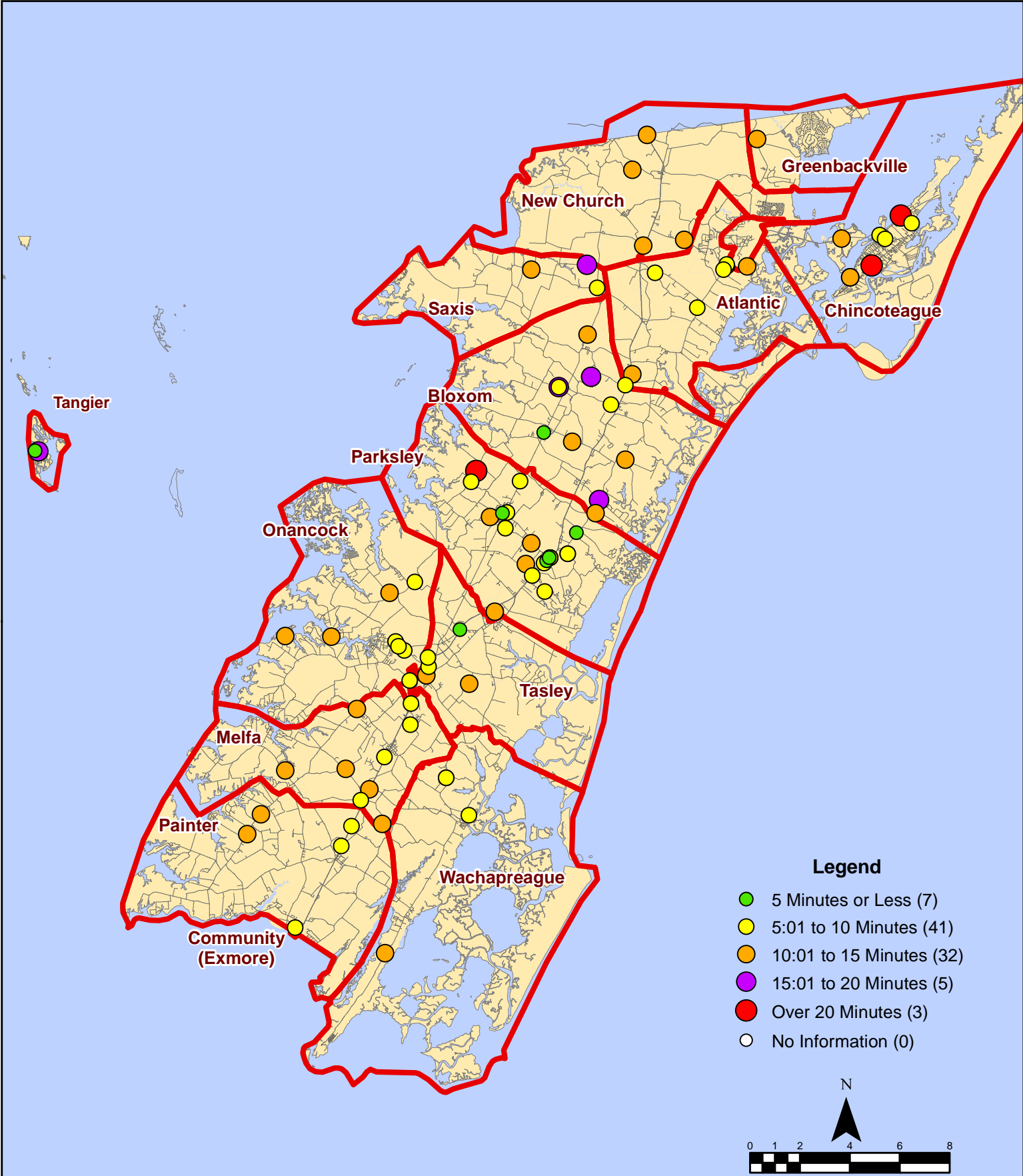
August 2023 Fire Calls By Type



August 2023 Fire Calls By Type



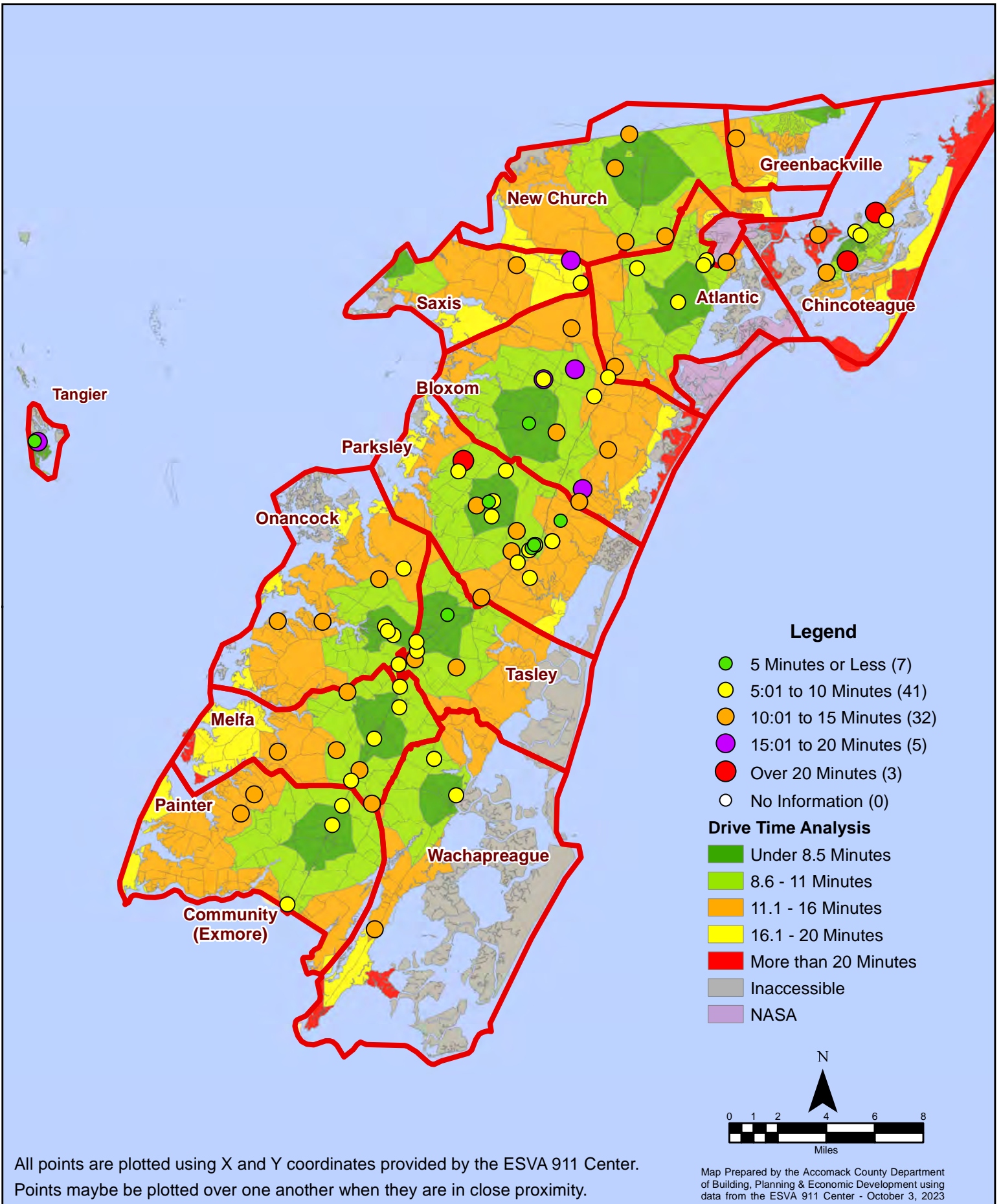
August 2023 Fire Calls By Response Time



All points are plotted using X and Y coordinates provided by the ESVA 911 Center. Points may be plotted over one another when they are in close proximity.

Map Prepared by the Accomack County Department of Building, Planning & Economic Development using data from the ESVA 911 Center - October 3, 2023

August 2023 Fire Calls By Response Time



All points are plotted using X and Y coordinates provided by the ESVA 911 Center. Points may be plotted over one another when they are in close proximity.

Map Prepared by the Accomack County Department of Building, Planning & Economic Development using data from the ESVA 911 Center - October 3, 2023