

Fire - Performance Measure Data					
Response District	Total Calls in District	Greater than 20 min. Response	Calls Handled by other agency	Longest Response Time	Station Benchmark Compliance
New Church	13	0	0	16:02	100.0%
Greenbackville	2	0	0	15:00	100.0%
Chincoteague	7	0	0	13:07	100.0%
Atlantic	13	0	0	14:32	100.0%
Saxis	4	0	0	16:25	100.0%
Bloxom	11	1	0	21:27	90.9%
Parksley	11	0	0	11:50	100.0%
Tasley	12	0	0	18:47	100.0%
Onancock	12	0	1	19:54	100.0%
Melfa	15	1	0	23:00	93.3%
Wachapreague	1	0	0	4:43	100.0%
Painter	7	0	0	12:31	100.0%
Onley	10	0	0	16:09	100.0%
Tangier	1	0	0	3:51	100.0%
System Totals	119	2	1	23:00	98.3%

EMS - Performance Measure Data						
Response District	Total Calls in District	Greater than 20 min. Response Time	Longest Response Time	Calls Handled by other agency	Station Benchmark Compliance %	Overall Station Reliability %
Greenbackville	13	1	0:07	8	92.3%	38.5%
Chincoteague	87	3	23:18	0	96.6%	100.0%
Saxis	10	1	23:57	7	90.0%	30.0%
Bloxom	50	1	21:49	7	98.0%	86.0%
Parksley	107	0	0:00	9	100.0%	91.6%
Onancock	64	0	17:59	6	100.0%	90.6%
Melfa	83	1	22:06	4	98.8%	95.2%
Wachapreague	24	0	19:42	15	100.0%	37.5%
Onley	43	0	16:44	6	100.0%	86.0%
Oak Hall	92	2	21:15	13	97.8%	85.9%
Tangier	8	0	7:03	0	100.0%	N/A
Community (Exmore)	13	0	11:51	1	100.0%	92.3%
System Totals	594	9	23:57	70	98.5%	88.2%

June 2015

EMS Mutual Aid Data

Station : Giving Aid	Station Receiving Aid													
	Greenbackville	Chincoteague	Saxis	Bloxom	Parksley	Onancock	Melfa	Wachapreague	Onley	Oak Hall	Community (Exmore)	NORS	2nd Call	3rd Call
Greenbackville												8	8	8
Chincoteague										4		0	0	0
Saxis												7	0	0
Bloxom			3		6							0	7	0
Parksley				5		1			1			0	9	1
Onancock										4		0	7	0
Melfa						3		15	3		1	0	3	0
Wachapreague												15	0	0
Onley					4	3	2					6	1	0
Oak Hall	8		4	2								0	15	0
Community (Exmore)							1					0	1	0
Wallops														1
Total	8	0	7	7	10	7	3	15	8	15	1	36	51	9

Over 20 minute response Detail

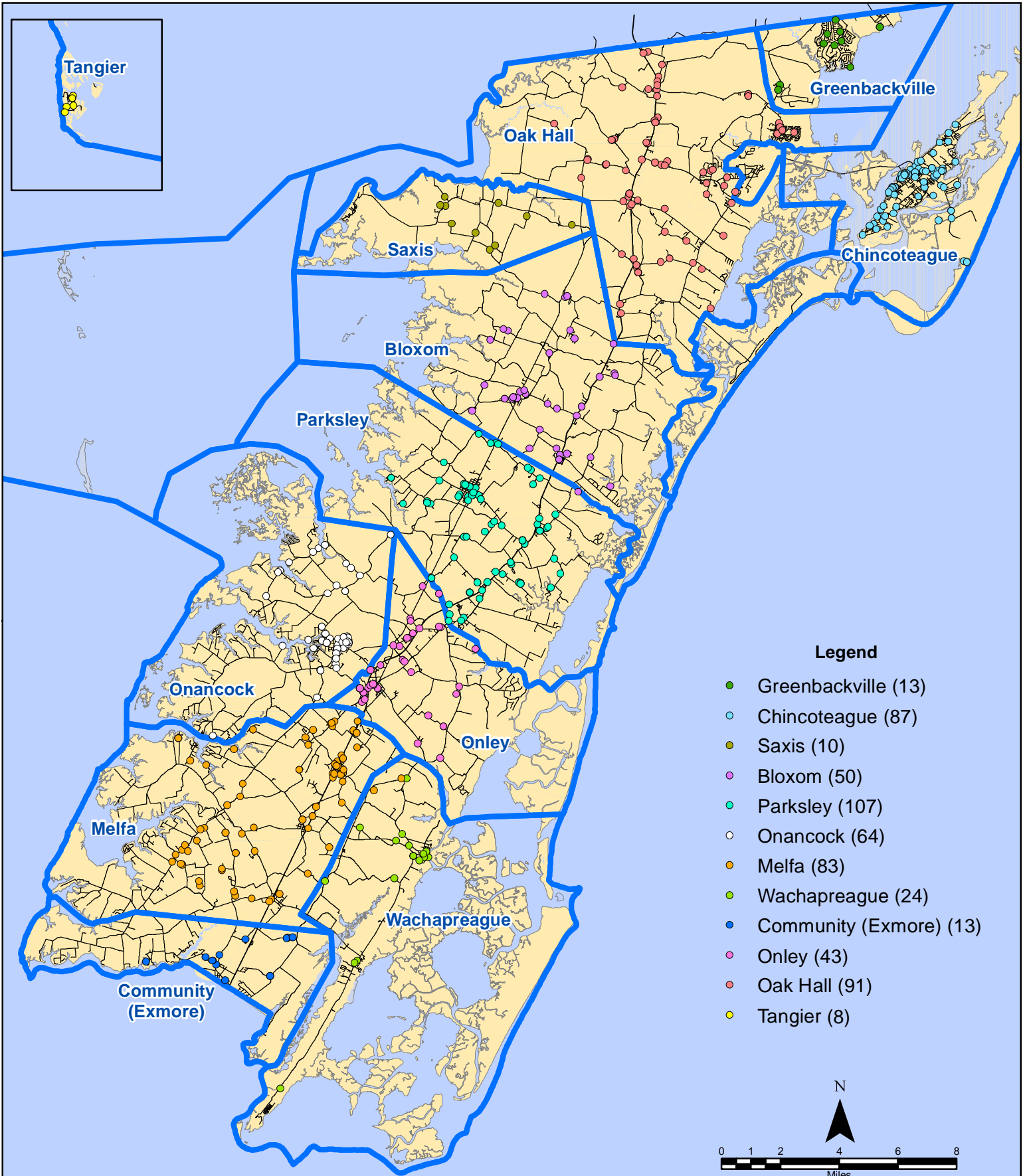
Date and Alarm Time	Dist.	Response Time	Explanation
6/11/2015 21:36	ST03	0:20:33	2nd Call \ Turnout Time
6/28/2015 7:03	ST20	0:20:34	2nd Call \ Drive time
6/14/2015 17:54	ST20	0:21:15	2nd Call \ Drive Time
6/26/2015 16:45	ST06	0:21:49	Staged for Law Enforcement
6/2/2015 3:04	ST10	0:22:06	5 min Turnout \ Drive Time
6/8/2015 15:51	ST03	0:23:15	2nd Call \ Returning from Hosp.
6/14/2015 11:28	ST03	0:23:18	2nd Call
6/21/2015 14:09	ST05	0:23:57	2nd Due to Fire \ Drive Time
6/22/2015 13:07	ST02	0:24:07	Drive Time

Benchmark = The Accomack County Board of Supervisors established 20 minute standard for emergency response.

NORS = No Response by station. The call was handled by another station or agency.
 2nd Call = 2nd Ambulance call received while first ambulance was on another call.
 3rd Call = 3rd Ambulance call received while First & Second Ambulances were on other calls.

This information was prepared using data supplied by the Eastern Shore of Virginia 911 Center.
 This information is original incident data only and may not be representative of all units or stations who responded to an incident.

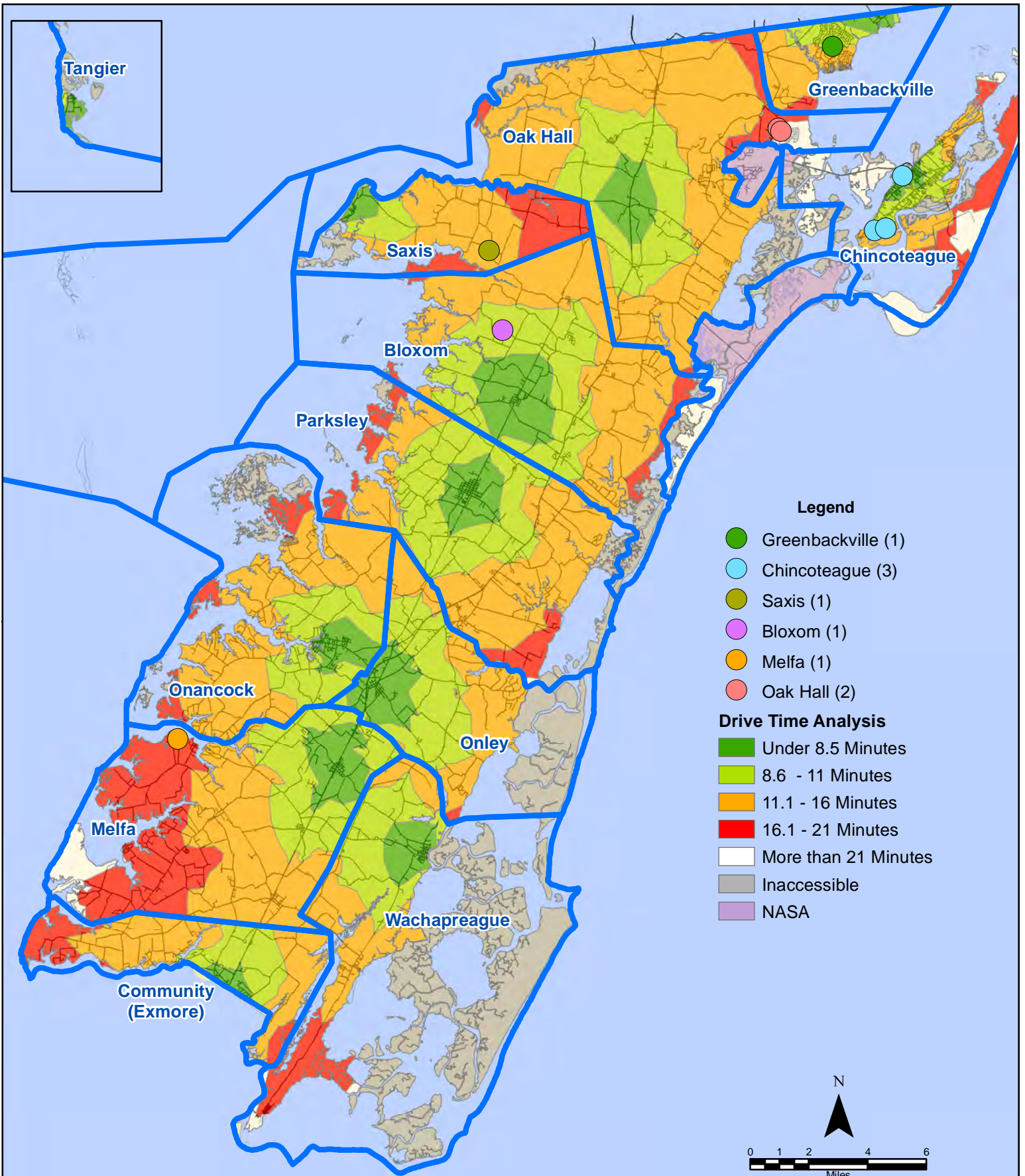
June 2015 EMS Calls By District



All points are plotted using X and Y coordinates provided by the ESVA 911 Center.
 Points may be plotted over one another when they are in close proximity.

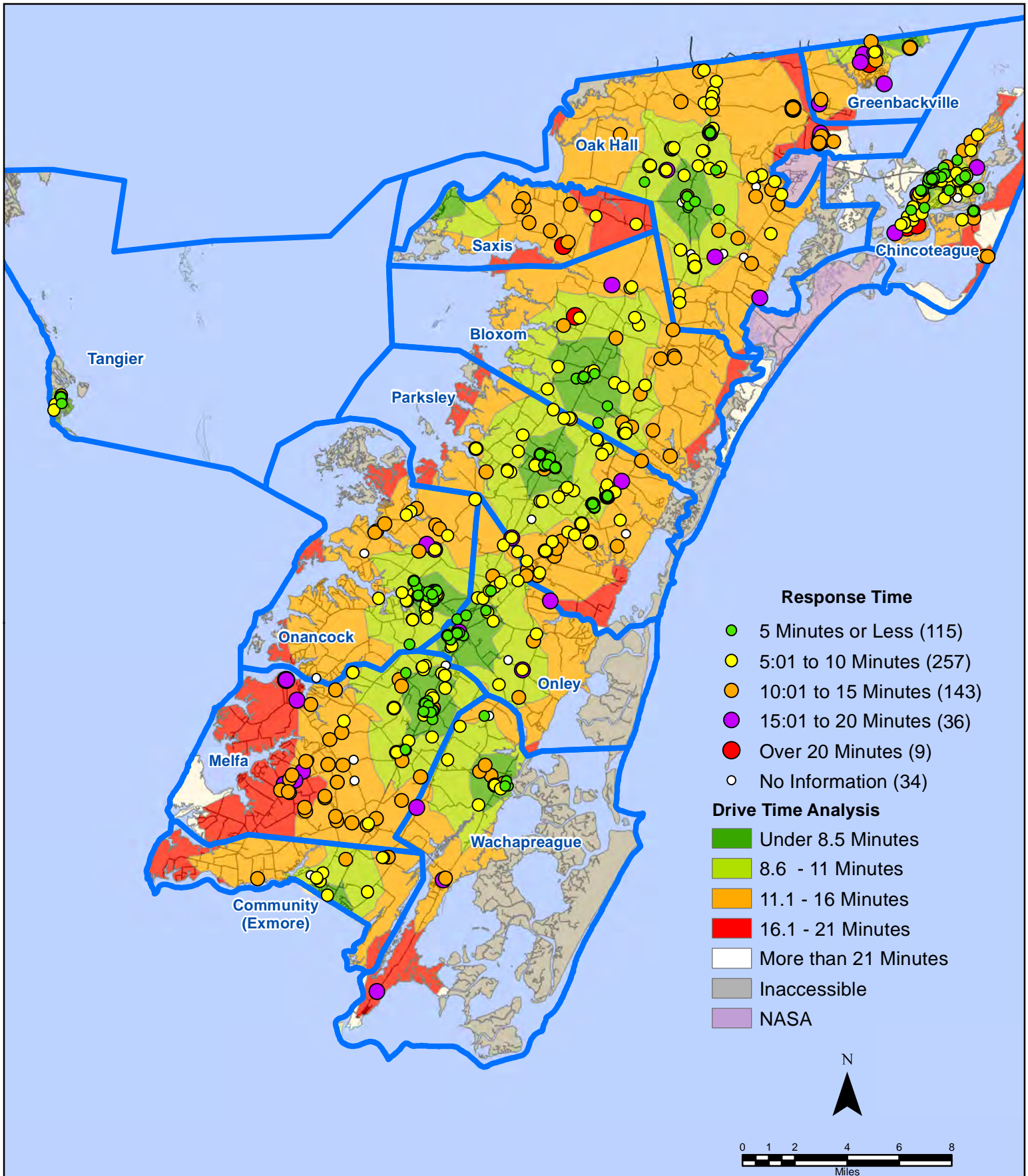
Map Prepared by the Accomack County Department
 of Planning & Community Development using data
 from the ESVA 911 Center. - July 7, 2015

June 2015 EMS Calls With Response Time Greater Than 20 Mins.



All points are plotted using X and Y coordinates provided by the ESVA 911 Center. Points may be plotted over one another when they are in close proximity.

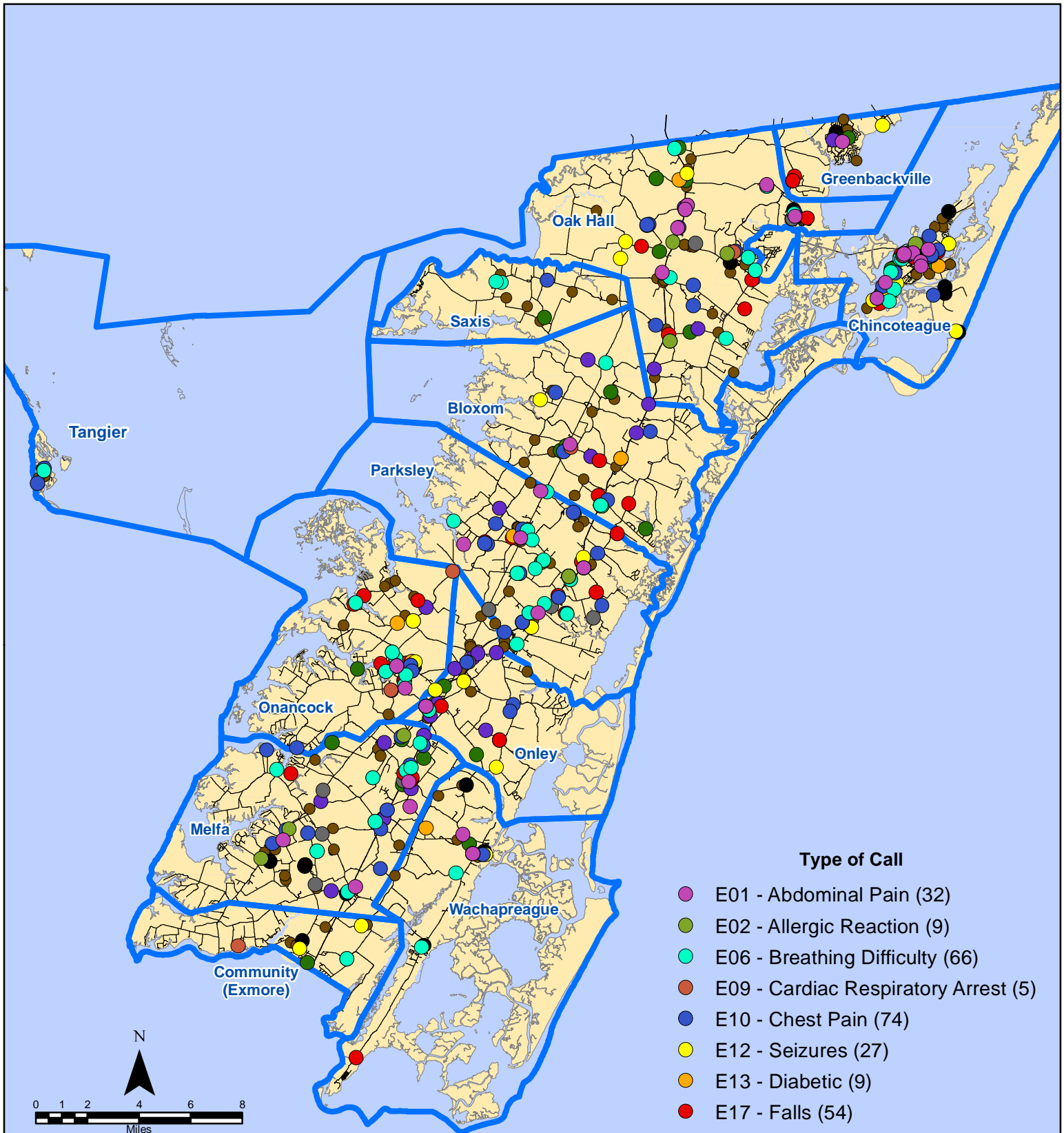
June 2015 EMS Calls By Response Time



All points are plotted using X and Y coordinates provided by the ESVA 911 Center. Points may be plotted over one another when they are in close proximity.

Map Prepared by the Accomack County Department of Planning & Community Development using data from the ESVA 911 Center. - July 7, 2015

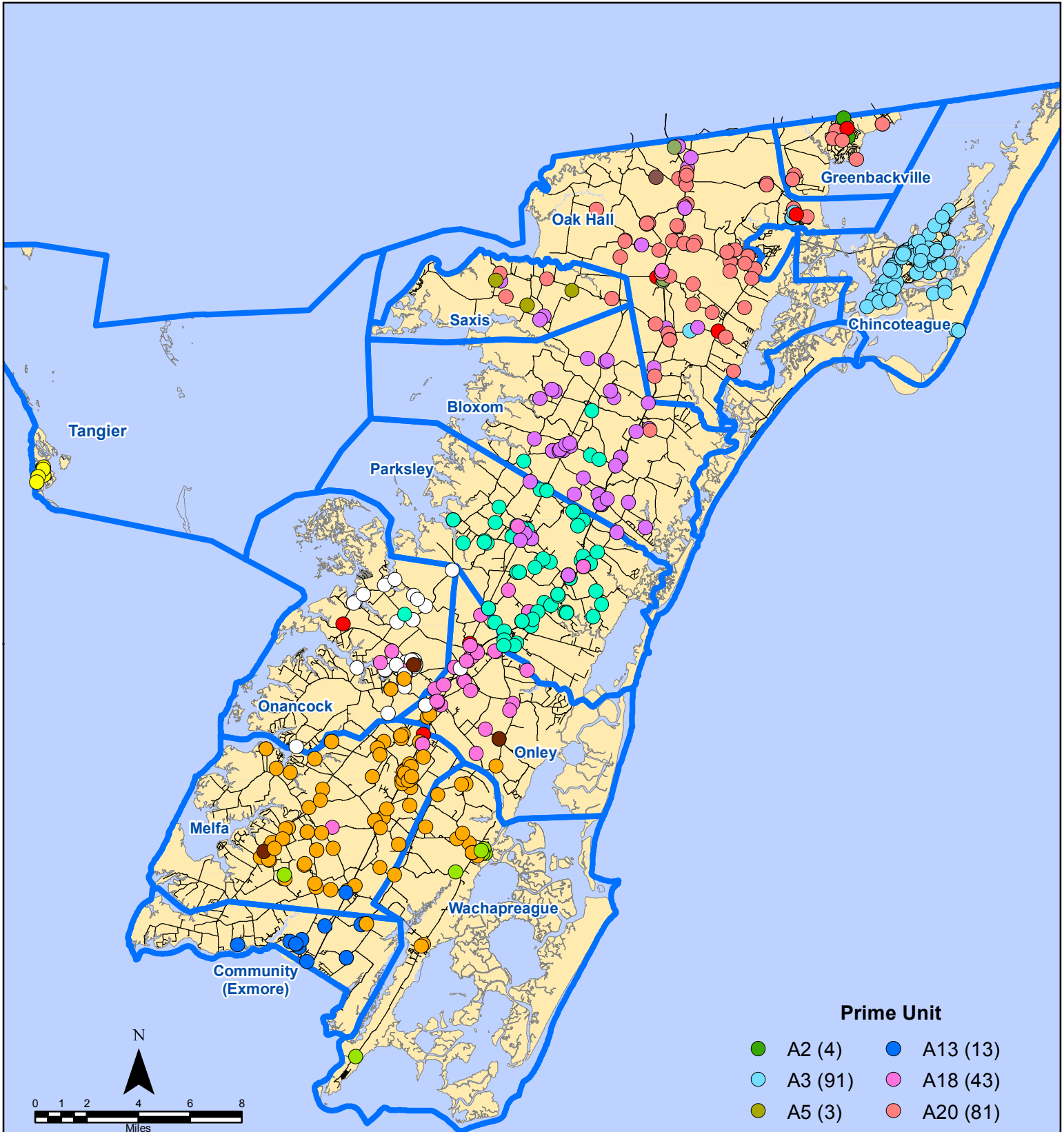
June 2015 EMS Calls By Type



Map Prepared by the Accomack County Department of Planning & Community Development using data from the ESVA 911 Center. - July 7, 2015

All points are plotted using X and Y coordinates provided by the ESVA 911 Center. Points may be plotted over one another when they are in close proximity.

June 2015 EMS Calls By Prime Unit



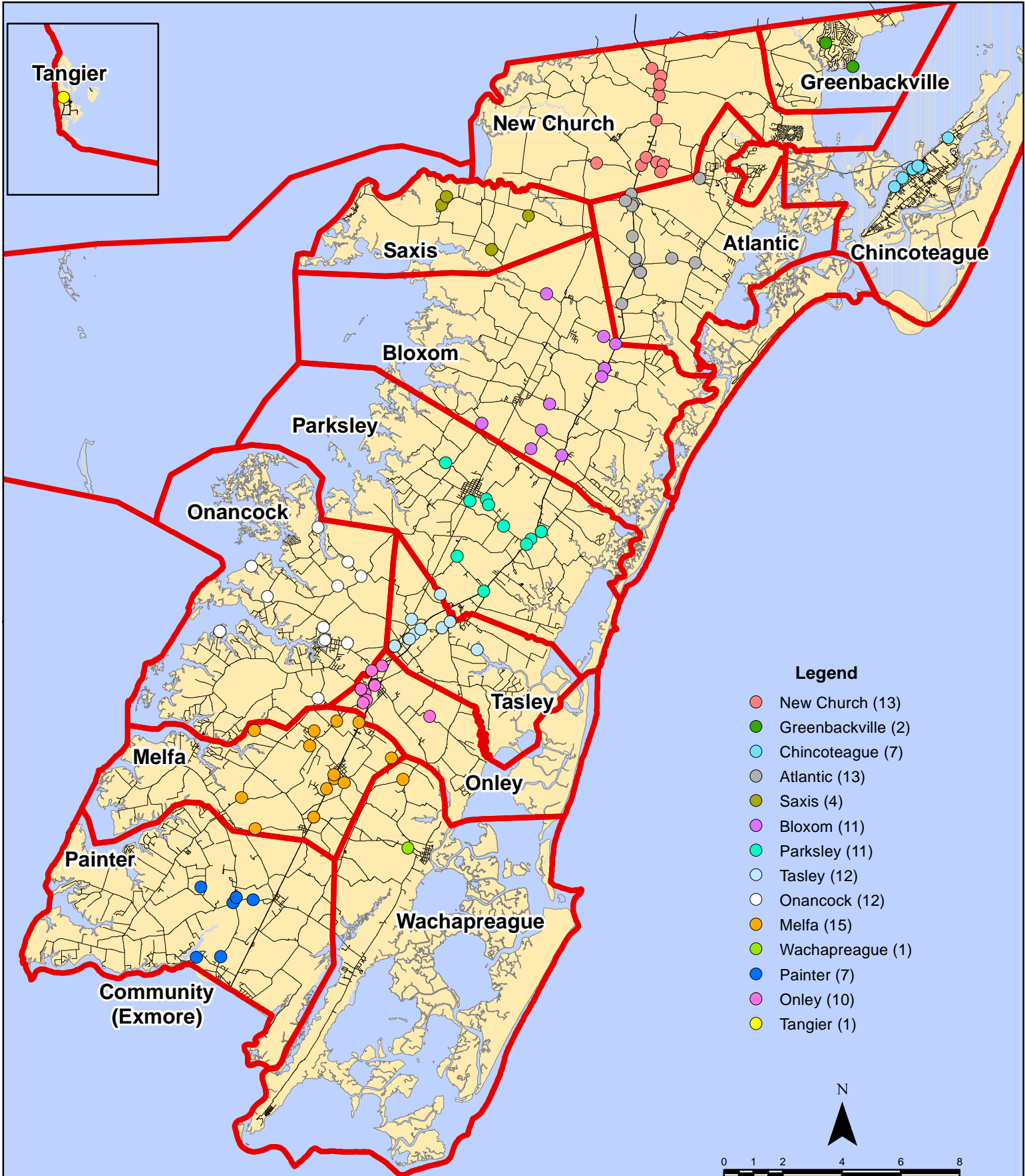
Prime Unit

● A2 (4)	● A13 (13)
● A3 (91)	● A18 (43)
● A5 (3)	● A20 (81)
● A6 (64)	● A21 (8)
● A7 (103)	● A25 (1)
● A9 (58)	● SPRINT 1 (3)
● A10 (94)	● SPRINT 2 (5)
● A11 (13)	● None (9)

Map Prepared by the Accomack County Department of Planning & Community Development using data from the ESVA 911 Center. - July 7, 2015

All points are plotted using X and Y coordinates provided by the ESVA 911 Center. Points may be plotted over one another when they are in close proximity.

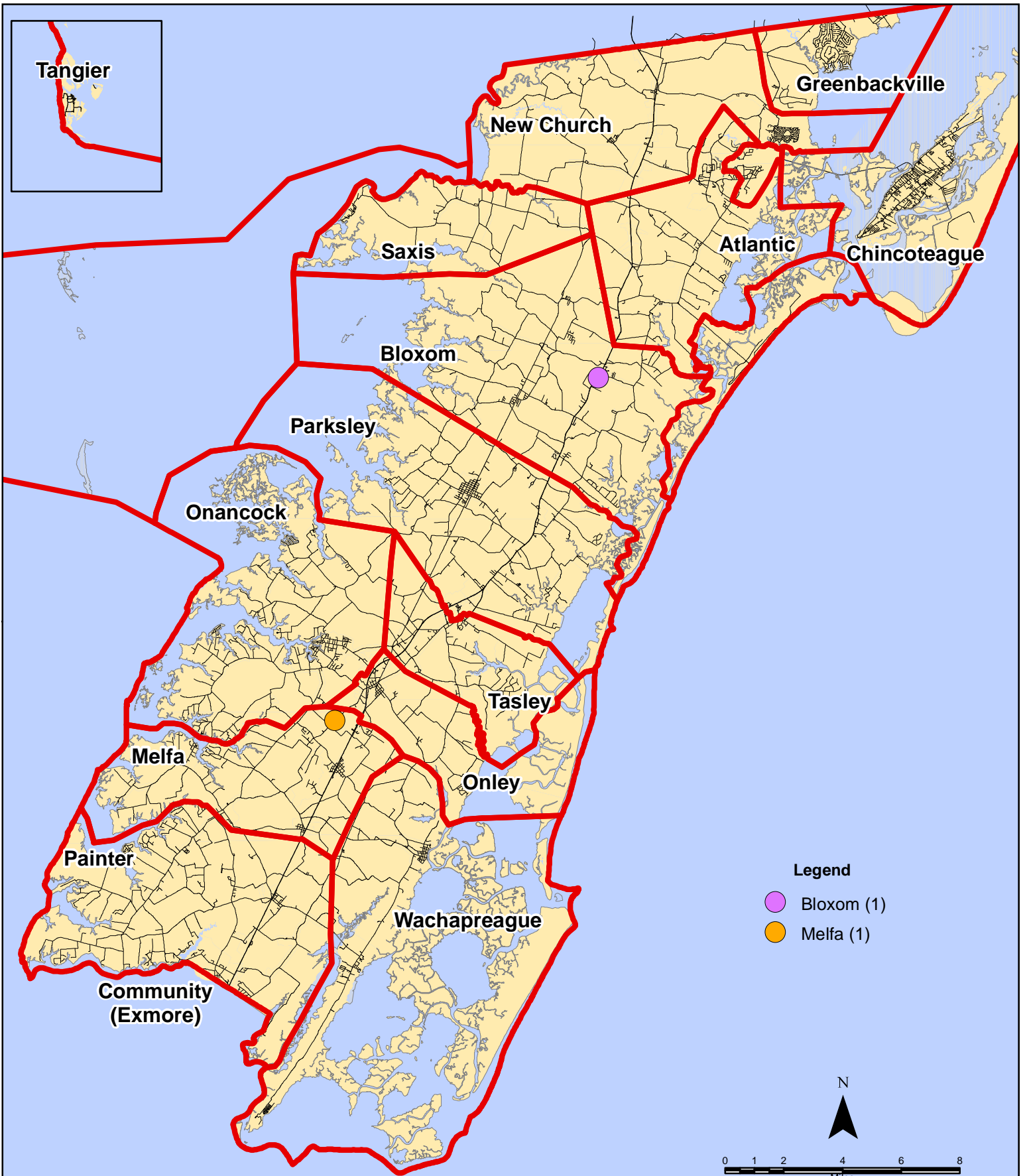
June 2015 Fire Calls By District



All points are plotted using X and Y coordinates provided by the ESVA 911 Center. Points may be plotted over one another when they are in close proximity.

Map Prepared by the Accomack County Department of Planning & Community Development using data from the ESVA 911 Center. - July 7, 2015

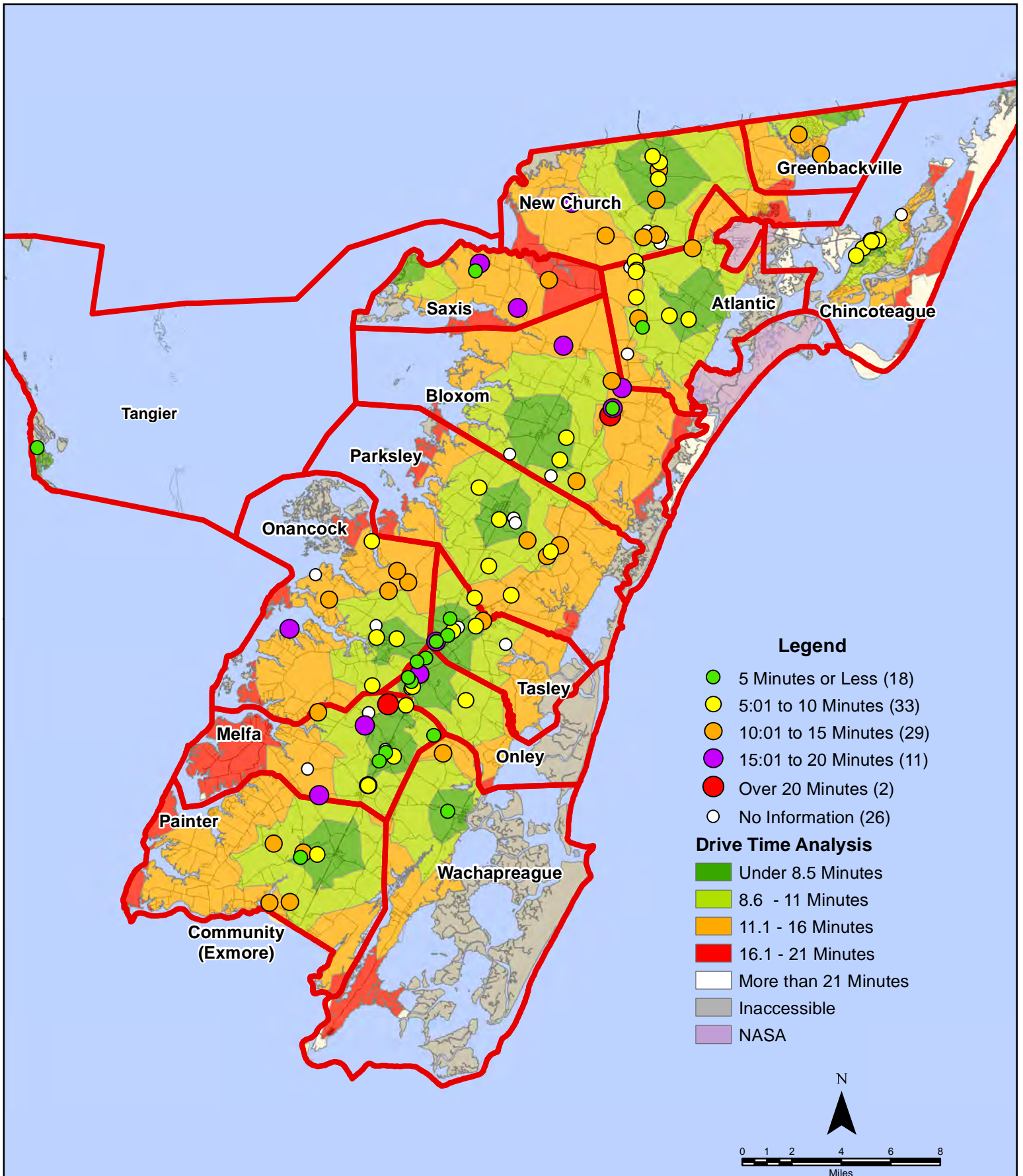
June 2015 Fire Calls With Response Time Greater Than 20 Mins.



All points are plotted using X and Y coordinates provided by the ESVA 911 Center. Points may be plotted over one another when they are in close proximity.

Map Prepared by the Accomack County Department of Planning & Community Development using data from the ESVA 911 Center. - July 7, 2015

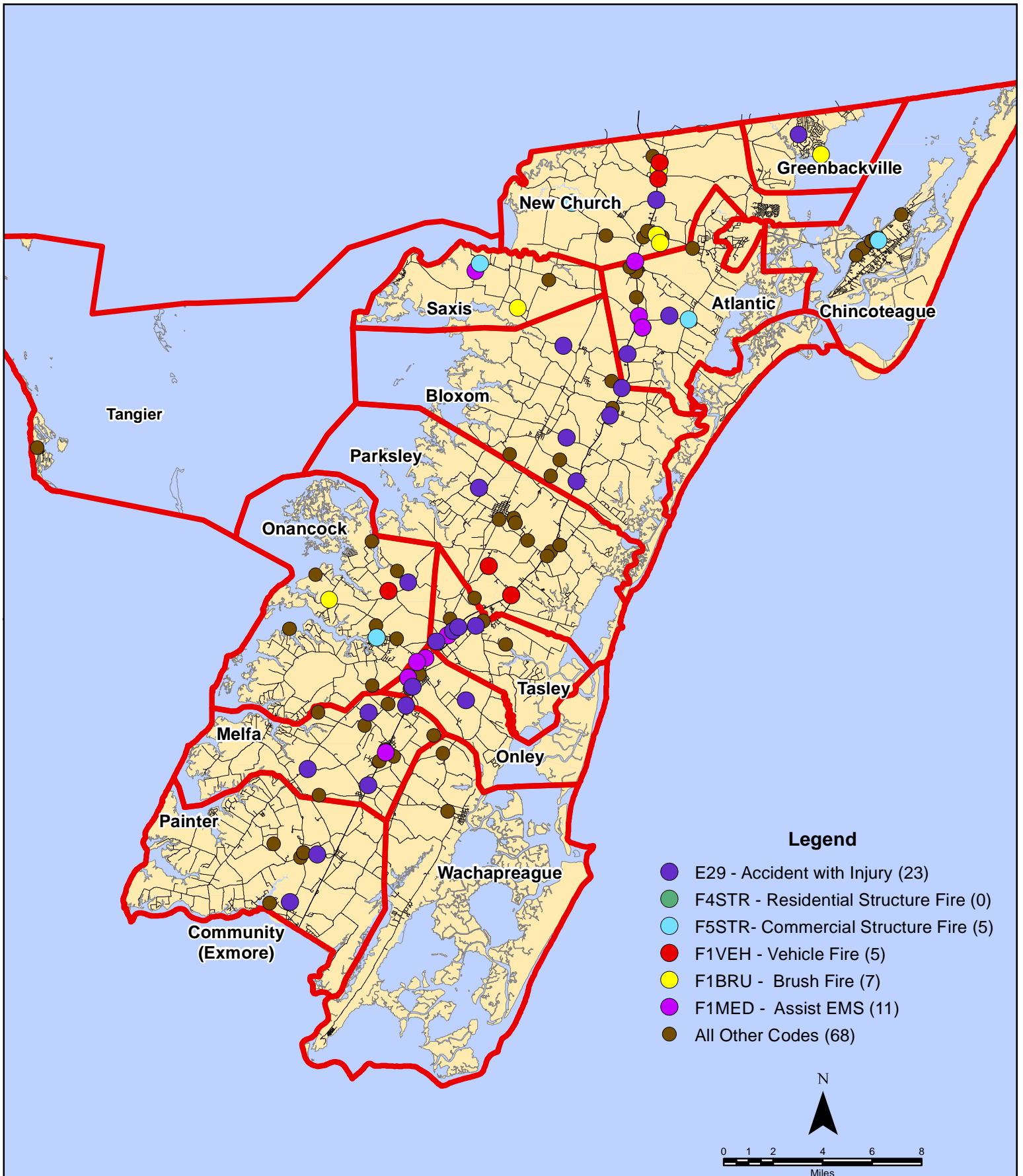
June 2015 Fire Calls By Response Time



All points are plotted using X and Y coordinates provided by the ESVA 911 Center. Points may be plotted over one another when they are in close proximity.

Map Prepared by the Accomack County Department of Planning & Community Development using data from the ESVA 911 Center. - July 7, 2015

June 2015 Fire Calls By Type



All points are plotted using X and Y coordinates provided by the ESVA 911 Center. Points may be plotted over one another when they are in close proximity.

Map Prepared by the Accomack County Department of Planning & Community Development using data from the ESVA 911 Center. - July 7, 2015