

Fire - Performance Measure Data					
Response District	Total Calls in District	Greater than 20 min. Response	Calls Handled by other agency	Longest Response Time	Overall Station Benchmark %
New Church	8	0	1	15:58	100.0%
Greenbackville	2	0	0	14:43	100.0%
Chincoteague	13	0	0	19:01	100.0%
Atlantic	7	0	0	12:26	100.0%
Saxis	0	0	0	N/A	N/A
Bloxom	15	1	1	21:15	93.3%
Parksley	11	0	0	10:58	100.0%
Tasley	4	0	0	11:19	100.0%
Onancock	14	0	0	16:38	100.0%
Melfa	12	1	0	21:07	91.7%
Wachapreague	1	0	0	3:48	100.0%
Painter	6	0	0	11:10	100.0%
Onley	12	0	0	8:36	100.0%
Tangier	0	0	0	N/A	N/A
<b>System Totals</b>	<b>105</b>	<b>2</b>	<b>2</b>	<b>19:07</b>	<b>98.1%</b>

EMS - Performance Measure Data						
Response District	Total Calls in District	Greater than 20 min. Response Time	Longest Response Time	Calls Handled by other agency	Station Benchmark Compliance %	Overall Station Reliability %
Greenbackville	11	1	22:18	10	90.91%	9.1%
Chincoteague	96	2	23:53	5	97.92%	94.8%
Saxis	6	1	21:00	3	83.33%	50.0%
Bloxom	57	0	18:42	5	100.00%	91.2%
Parksley	101	0	15:05	10	100.00%	90.1%
Onancock	45	0	18:50	2	100.00%	95.6%
Melfa	70	2	20:22	5	97.14%	92.9%
Wachapreague	11	0	18:49	7	100.00%	36.4%
Onley	48	1	23:53	5	97.92%	89.6%
Oak Hall	96	4	23:02	14	95.83%	85.4%
Tangier	9	0	8:30	0	100.00%	100.0%
Community (Exmore)	16	0	17:18	3	100.00%	81.3%
<b>System Totals</b>	<b>566</b>	<b>11</b>	<b>23:53</b>	<b>69</b>	<b>98.06%</b>	<b>87.8%</b>

## July 2015

### EMS Mutual Aid Data

Station : Giving Aid	Station Receiving Aid													
	Greenbackville	Chincoteague	Saxis	Bloxom	Parksley	Onancock	Melfa	Wachapreague	Onley	Oak Hall	Community (Exmore)	NORS	2nd Call	3rd Call
Greenbackville												10	0	0
Chincoteague											5	0	5	0
Saxis												3	0	0
Bloxom				6	1						9	0	4	1
Parksley			4									0	7	3
Onancock						1					5	0	2	0
Melfa							6				3	0	5	0
Wachapreague												7	0	0
Onley				1	4	1	1					0	5	0
Oak Hall	10	5	3											
Community (Exmore)						3	1					0	3	0
North. Co.														
<b>Total</b>	<b>10</b>	<b>5</b>	<b>3</b>	<b>5</b>	<b>10</b>	<b>2</b>	<b>5</b>	<b>7</b>	<b>5</b>	<b>14</b>	<b>3</b>	<b>20</b>	<b>31</b>	<b>4</b>

### Over 20 minute response Detail

Date and Alarm Time	Dist.	Response Time	Explanation
7/2/2015 1:07	ST20	0:22:22	Unable to locate - Wrong Address Given
7/3/2015 23:47	ST20	0:23:02	Staged waiting for LE
7/4/2015 9:01	ST02	0:22:18	Drive Time
7/5/2015 0:39	ST03	0:23:53	2nd Call - Call handed by 2nd due
7/8/2015 21:08	ST20	0:20:51	2nd Call - Long Turnout time
7/10/2015 21:24	ST03	0:22:40	2nd Call - Long Turnout time
7/13/2015 11:50	ST18	0:23:53	Unable to locate - Wrong Address Given
7/17/2015 0:54	ST05	0:21:00	Long Turn Out Time - Sta. 20 2nd Call
7/19/2015 15:58	ST10	0:20:22	Unknown - Possibly long Drive Time
7/23/2015 17:04	ST20	0:27:48	2nd Call - Call handed by 2nd due
7/28/2015 23:47	ST10	0:21:14	2nd Call - Long Turnout time

Benchmark = The Accomack County Board of Supervisors established 20 minute standard for emergency response.

NORS = No Response by station. The call was handled by another station or agency.

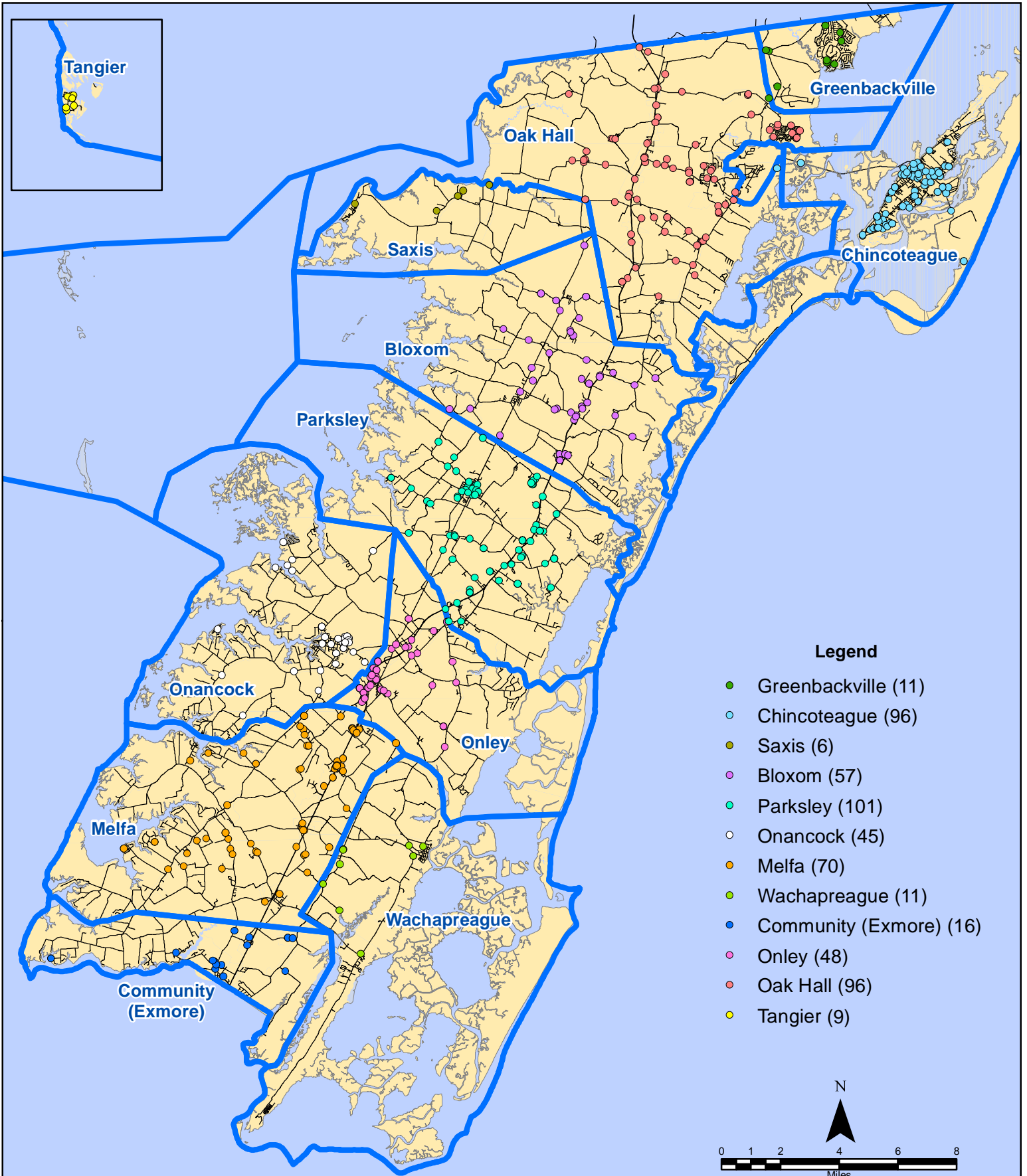
2nd Call = 2nd Ambulance call received while first ambulance was on another call.

3rd Call = 3rd Ambulance call received while First & Second Ambulances were on other calls.

This information was prepared using data supplied by the Eastern Shore of Virginia 911 Center.

This information is original incident data only and may not be representative of all units or stations who responded to an incident.

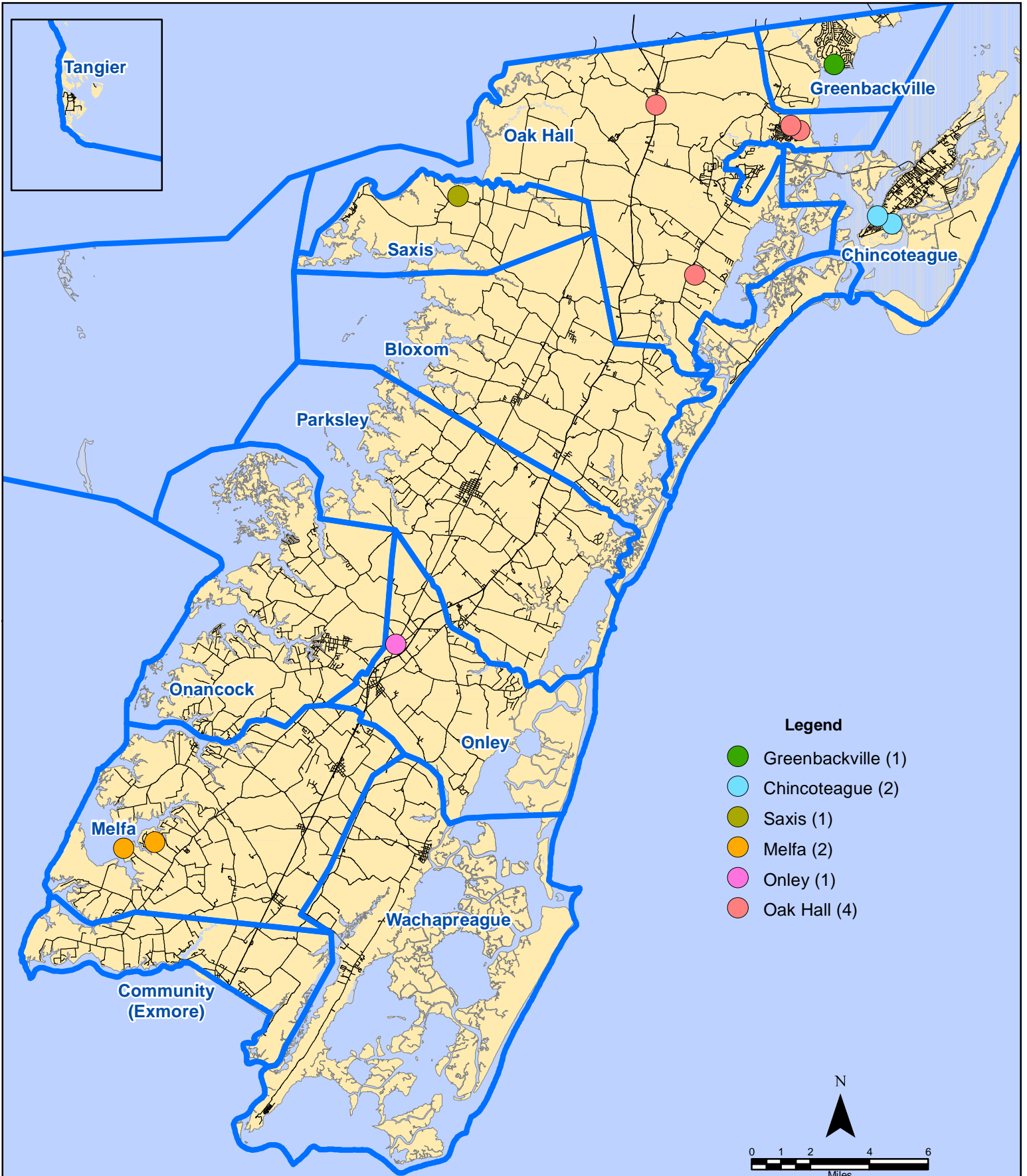
# July 2015 EMS Calls By District



All points are plotted using X and Y coordinates provided by the ESVA 911 Center.  
Points may be plotted over one another when they are in close proximity.

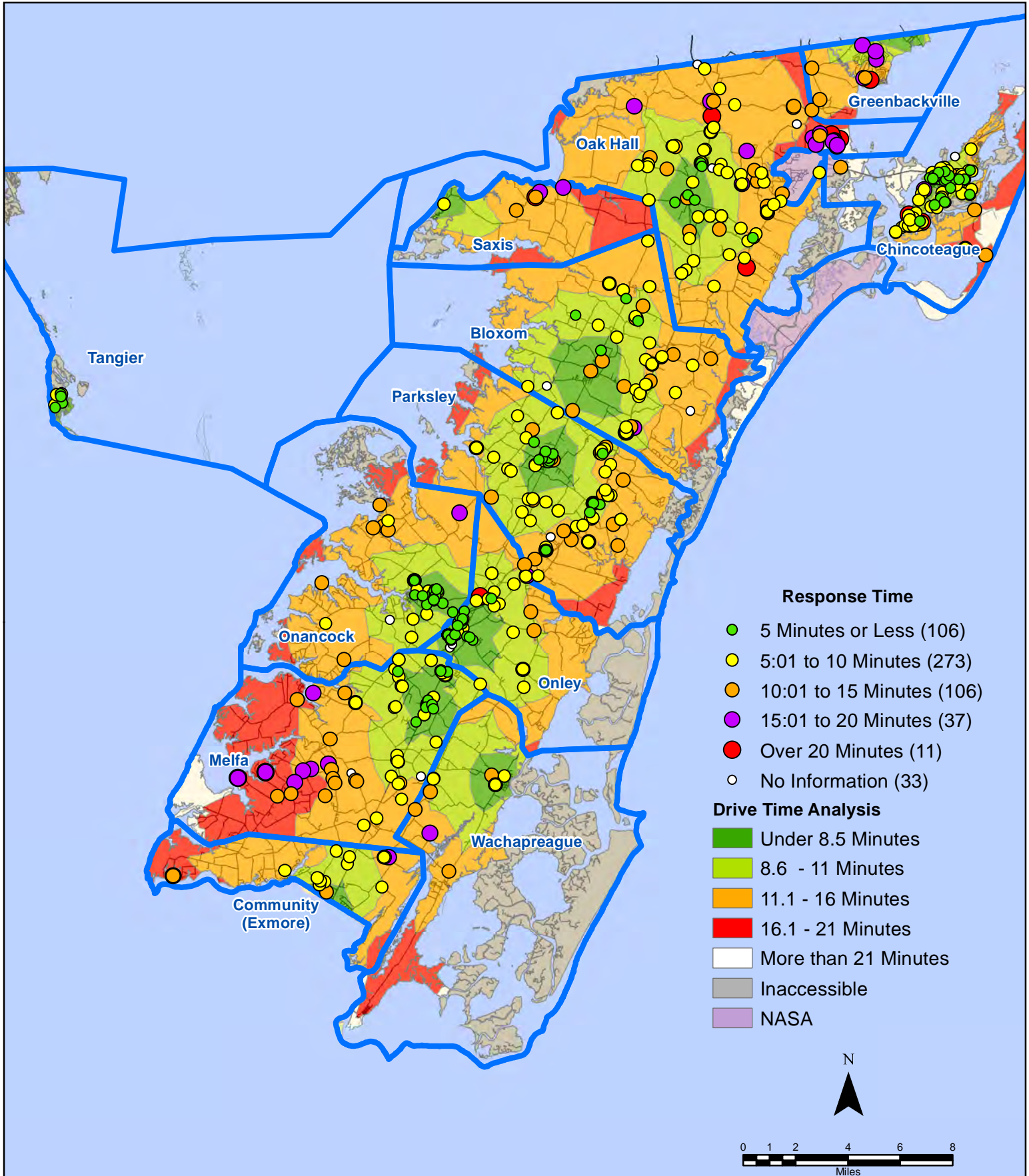
Map Prepared by the Accomack County Department  
of Planning & Community Development using data  
from the ESVA 911 Center. - August 14, 2015

# July 2015 EMS Calls With Response Time Greater Than 20 Mins.



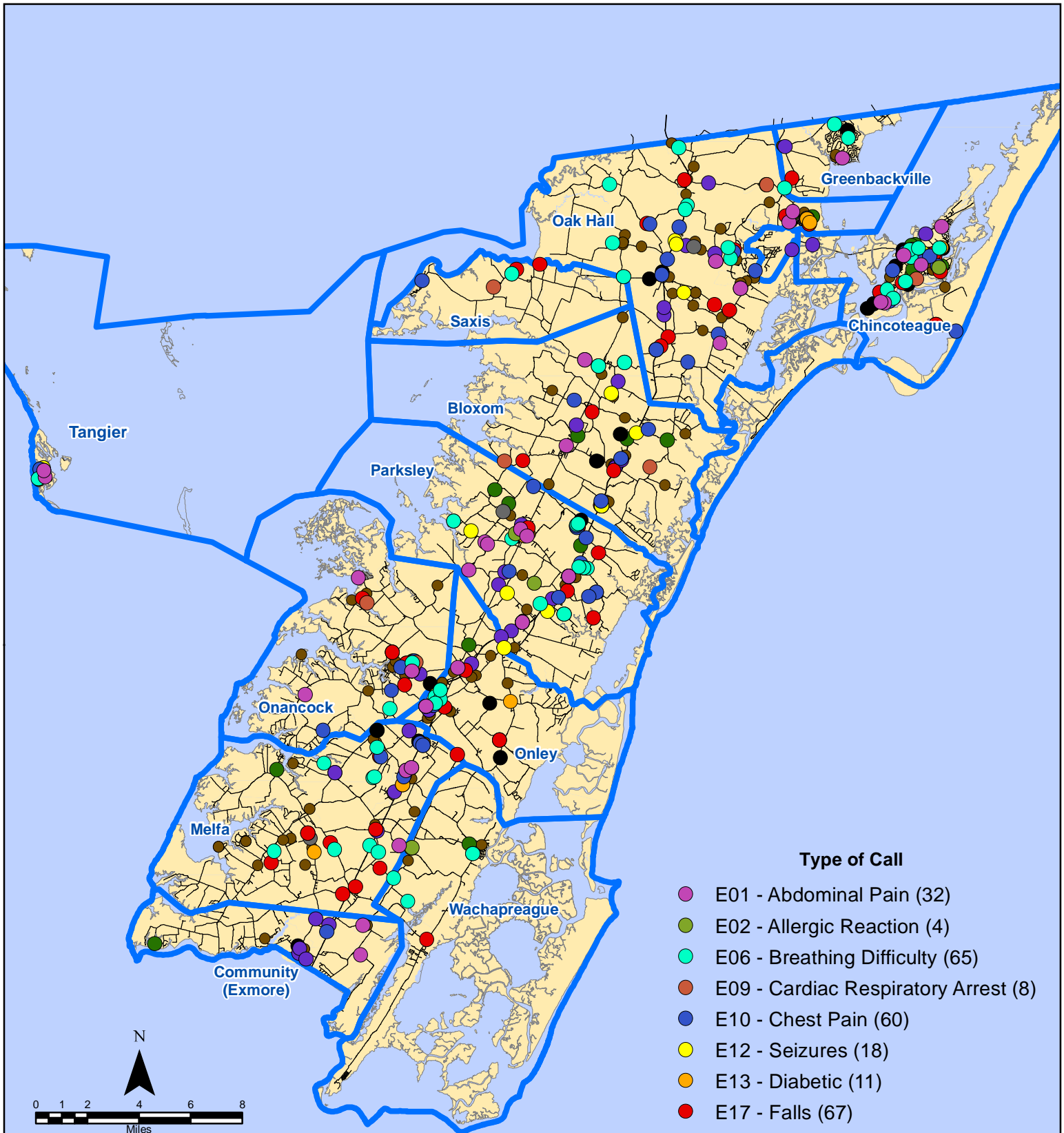
All points are plotted using X and Y coordinates provided by the ESVA 911 Center. Points may be plotted over one another when they are in close proximity.

# July 2015 EMS Calls By Response Time



All points are plotted using X and Y coordinates provided by the ESVA 911 Center. Points may be plotted over one another when they are in close proximity.

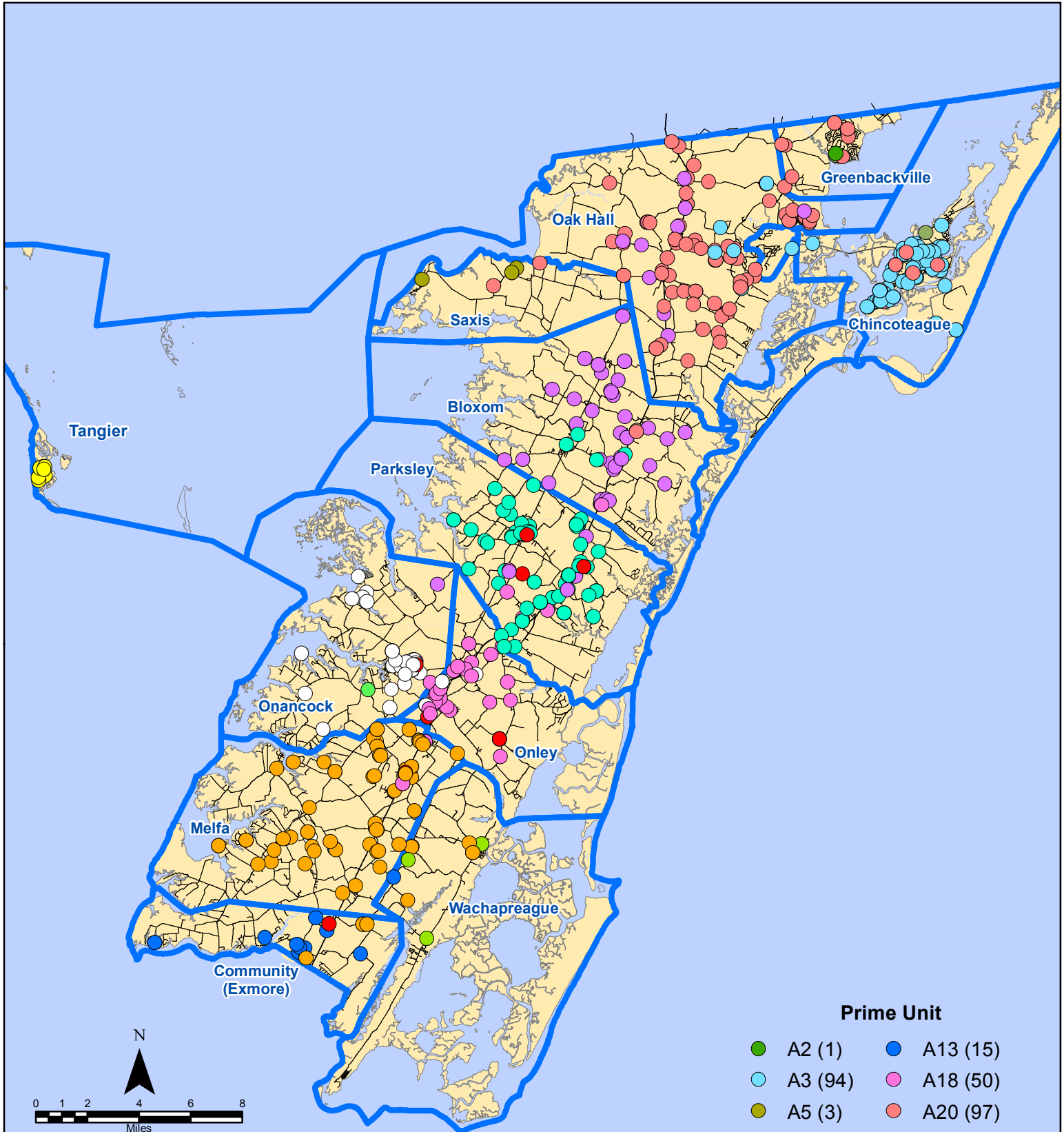
# July 2015 EMS Calls By Type



Map Prepared by the Accomack County Department of Planning & Community Development using data from the ESVA 911 Center. - August 14, 2015

All points are plotted using X and Y coordinates provided by the ESVA 911 Center. Points may be plotted over one another when they are in close proximity.

# July 2015 EMS Calls By Prime Unit



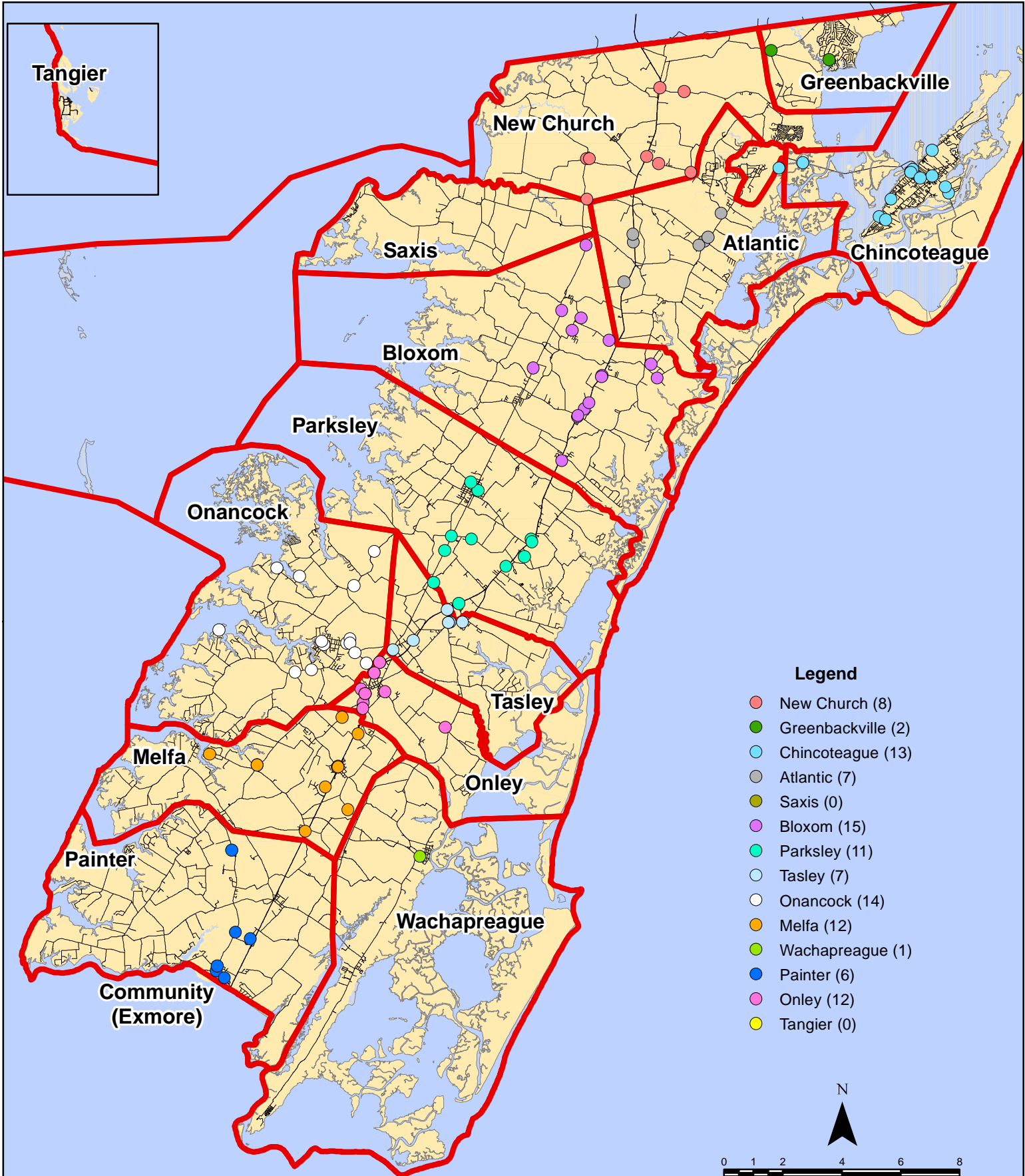
## Prime Unit

● A2 (1)	● A13 (15)
● A3 (94)	● A18 (50)
● A5 (3)	● A20 (97)
● A6 (68)	● A21 (9)
● A7 (91)	● DPS3 (1)
● A9 (47)	● SPRINT 1 (3)
● A10 (73)	● SPRINT 2 (1)
● A11 (4)	● None (9)

Map Prepared by the Accomack County Department of Planning & Community Development using data from the ESVA 911 Center. - August 17, 2015

All points are plotted using X and Y coordinates provided by the ESVA 911 Center. Points may be plotted over one another when they are in close proximity.

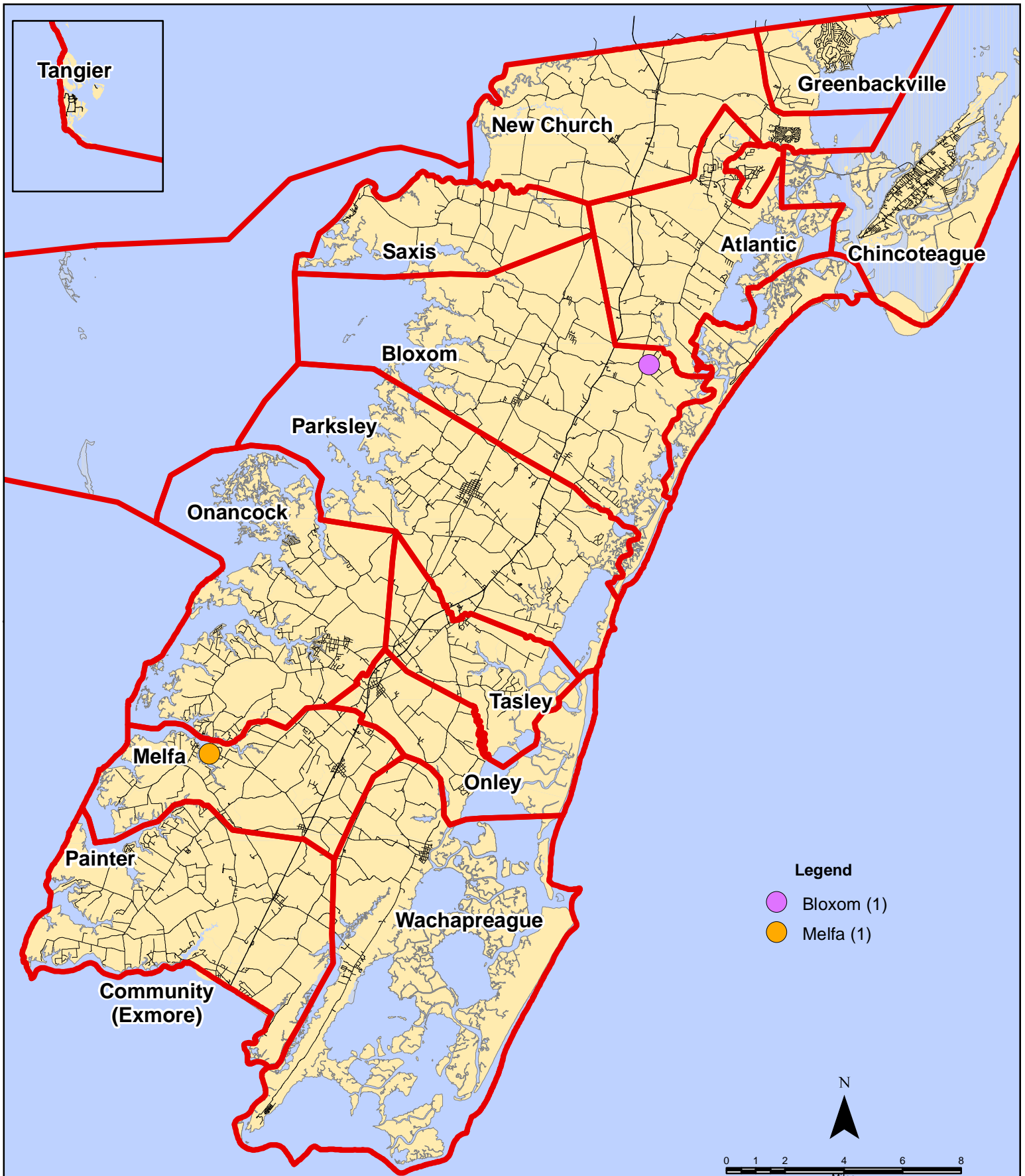
# July 2015 Fire Calls By District



All points are plotted using X and Y coordinates provided by the ESVA 911 Center. Points may be plotted over one another when they are in close proximity.

Map Prepared by the Accomack County Department of Planning & Community Development using data from the ESVA 911 Center. - August 14, 2015

# July 2015 Fire Calls With Response Time Greater Than 20 Mins.

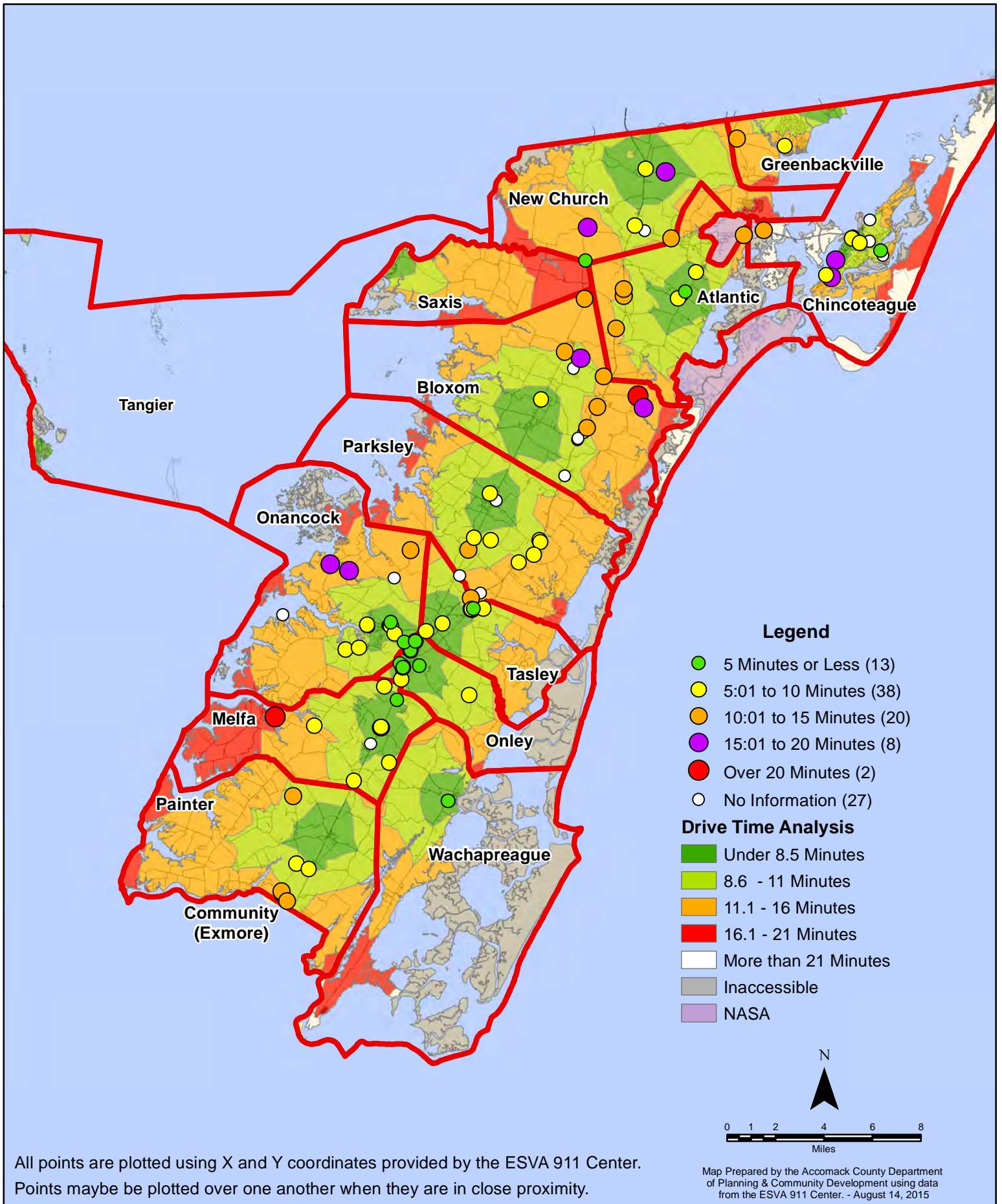


All points are plotted using X and Y coordinates provided by the ESVA 911 Center. Points may be plotted over one another when they are in close proximity.

Map Prepared by the Accomack County Department of Planning & Community Development using data from the ESVA 911 Center. - August 14, 2015



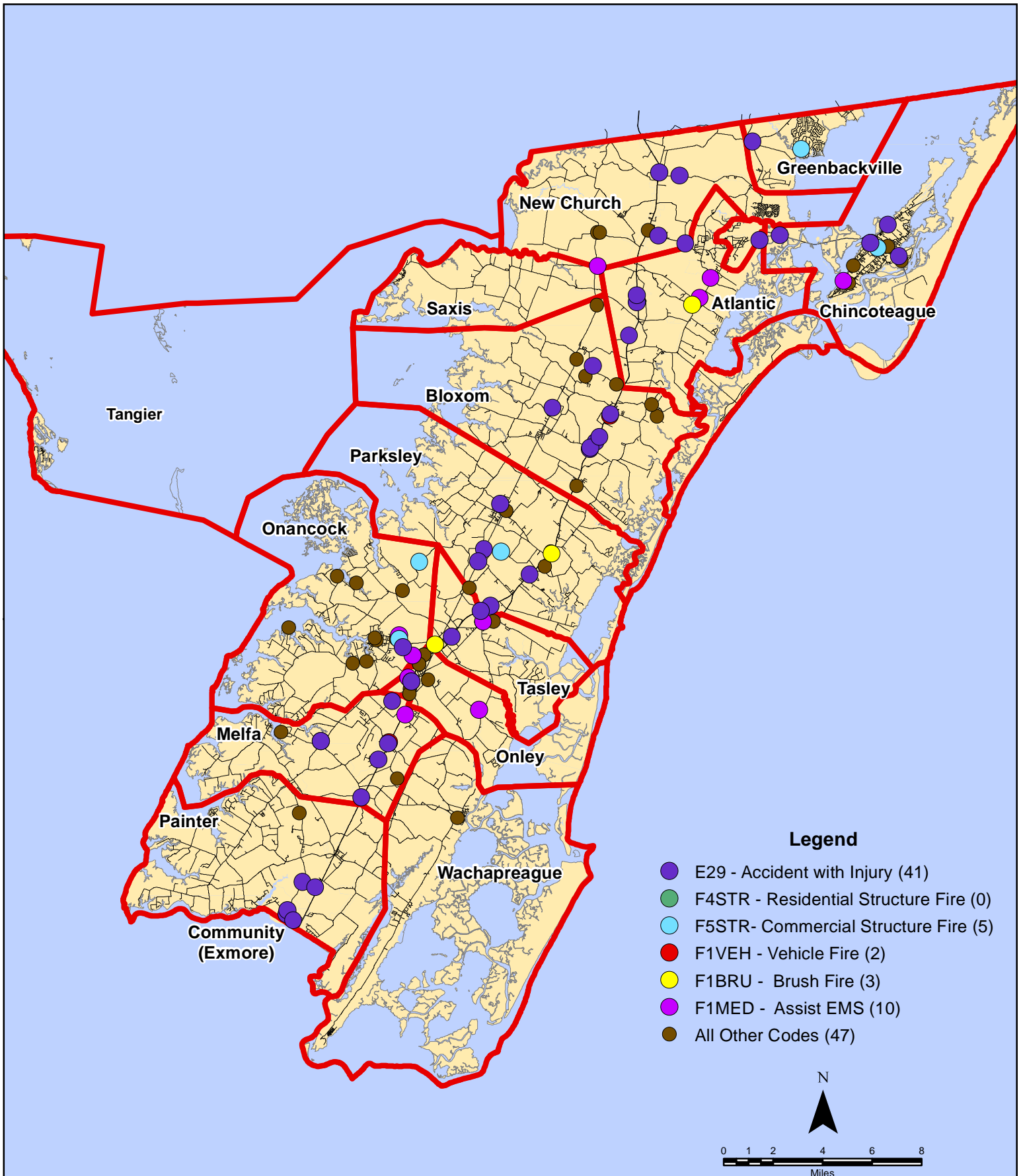
# July 2015 Fire Calls By Response Time



All points are plotted using X and Y coordinates provided by the ESVA 911 Center. Points may be plotted over one another when they are in close proximity.

Map Prepared by the Accomack County Department of Planning & Community Development using data from the ESVA 911 Center. - August 14, 2015

# July 2015 Fire Calls By Type



All points are plotted using X and Y coordinates provided by the ESVA 911 Center. Points may be plotted over one another when they are in close proximity.

Map Prepared by the Accomack County Department of Planning & Community Development using data from the ESVA 911 Center. - August 14, 2015