

January 2017

Fire - Performance Measure Data *					
Response District	Total Calls in District	Greater than 20 min. Response Time	Calls Handled by other agency	Longest Response Time	Overall Station Benchmark %
New Church	6	0	0	0:16:38	100.0%
Greenbackville	0	0	0	0	#DIV/0!
Chincoteague	2	0	0	0:11:27	100.0%
Atlantic	6	0	0	0:17:02	100.0%
Saxis	0	0	0	0	#DIV/0!
Bloxom	5	0	0	0:14:24	100.0%
Parksley	11	0	0	0:12:20	100.0%
Tasley	3	0	0	0:10:44	100.0%
Onancock	9	0	0	0:12:38	100.0%
Melfa	5	1	1	0:22:30	80.0%
Wachapreague	1	0	0	0:06:01	100.0%
Painter	10	1	0	0:24:52	90.0%
Onley	6	0	3	0:12:31	100.0%
Tangier	0	0	0	0	#DIV/0!
System Totals	64	2	4	0:24:52	96.9%

EMS - Performance Measure Data						
Response District	Total Calls in District	Greater than 20 min. Response Time	Longest Response Time	Calls Handled by other agency	Station Benchmark Compliance %	Overall Station Reliability %
Greenbackville	6	1	0:20:06	5	83.33%	16.7%
Chincoteague	48	0	0:15:12	2	100.00%	95.8%
Saxis	6	0	0:14:46	1	100.00%	83.3%
Bloxom	51	0	0:18:31	2	100.00%	96.1%
Parksley	75	0	0:19:32	3	100.00%	96.0%
Onancock	46	0	0:18:48	2	100.00%	95.7%
Melfa	49	5	0:29:45	2	89.80%	95.9%
Wachapreague (Painter)	44	3	0:46:59	3	93.18%	93.2%
Onley	32	1	0:20:21	17	96.88%	46.9%
Oak Hall	77	3	0:30:47	7	96.10%	90.9%
Tangier	4	0	0:14:47	0	100.00%	100.0%
Community (Exmore)	8	0	0:16:36	0	100.00%	100.0%
System Totals	446	13	0:39:28	44	97.09%	90.1%

	Station Giving Aid												
	Greenbackville	Chincoteague	Saxis	Bloxom	Parksley	Onancock	Melfa	Wachapreague/Painter	Onley	Oak Hall	Community (Exmore)	Northampton	NORS
Greenbackville										5			5
Chincoteague										2			2
Saxis										1			1
Bloxom					2								2
Parksley				2		1							3
Onancock								1	1				1
Melfa								1	1				2
Wachapreague (Painter)						1	1				1		2
Onley					2	13	2						14
Oak Hall		1		6									7
Community (Exmore)													
Northampton Co.													
Wallops													
Total	0	1	0	8	4	15	3	2	2	8	1	0	25

Benchmark = The Accomack County Board of Supervisors established a 20 minute standard for emergency response.

NORS = No Response by station or the call was handled by another station or agency.

2nd Call = 2nd ambulance call received while first ambulance was on another call.

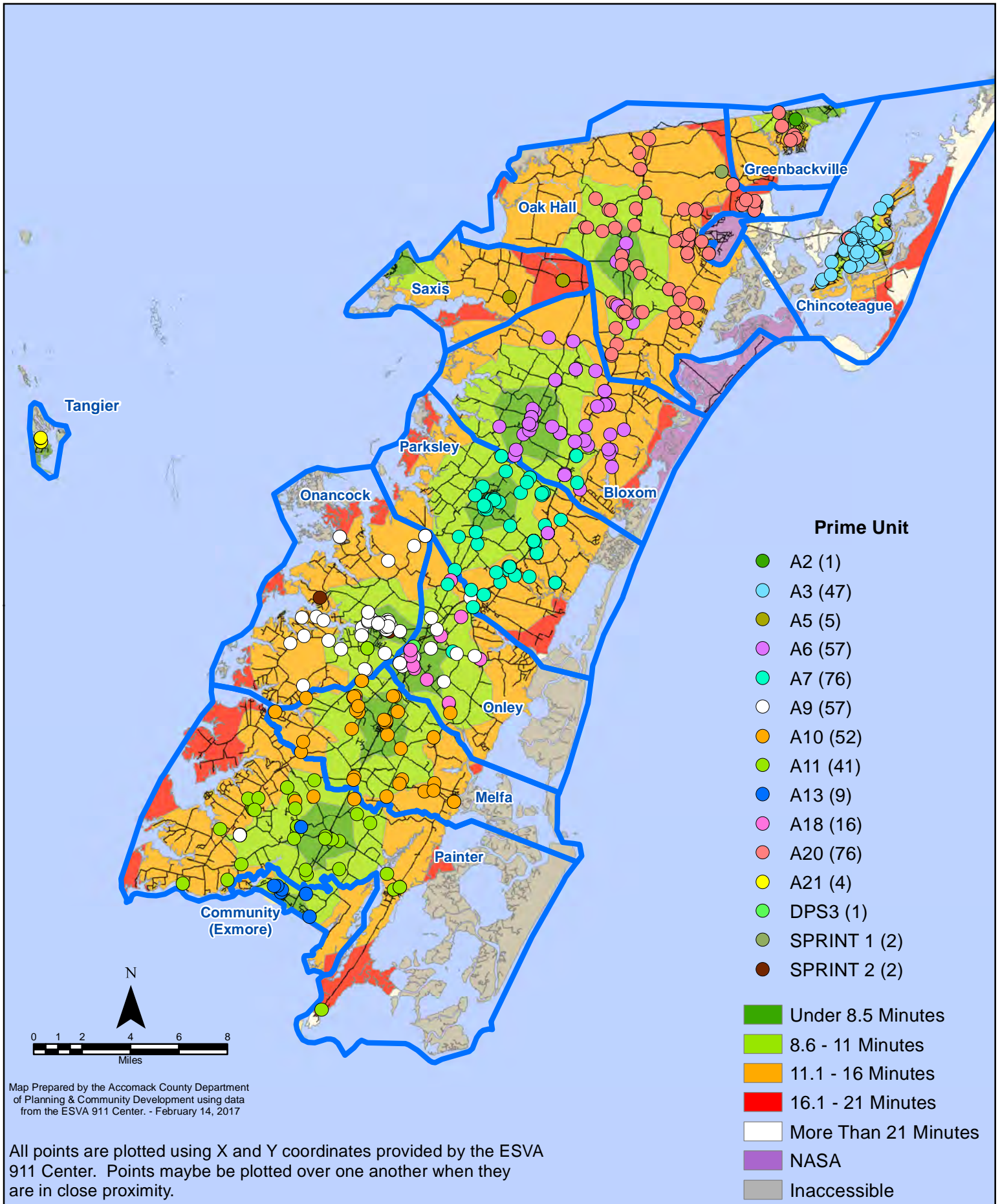
3rd Call = 3rd ambulance call received while first & second ambulances were on other calls.

* This data excludes F1 Med (Medical Assist) calls in the Fire Data.

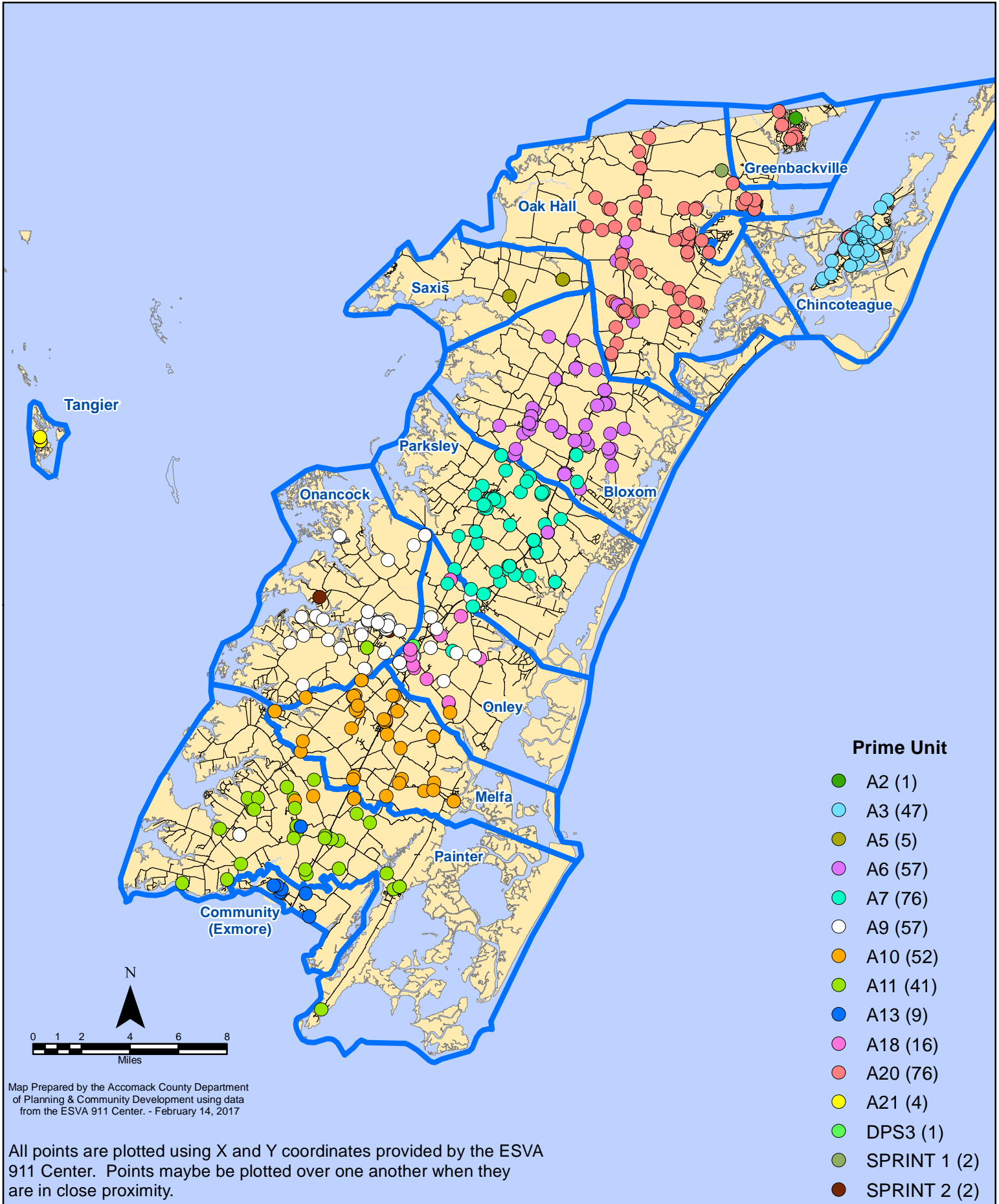
This information was prepared using data supplied by the Eastern Shore of Virginia 911 Center. This information is original incident data only and may not be representative of all units and/or stations who responded to an incident.

Station Receiving Aid

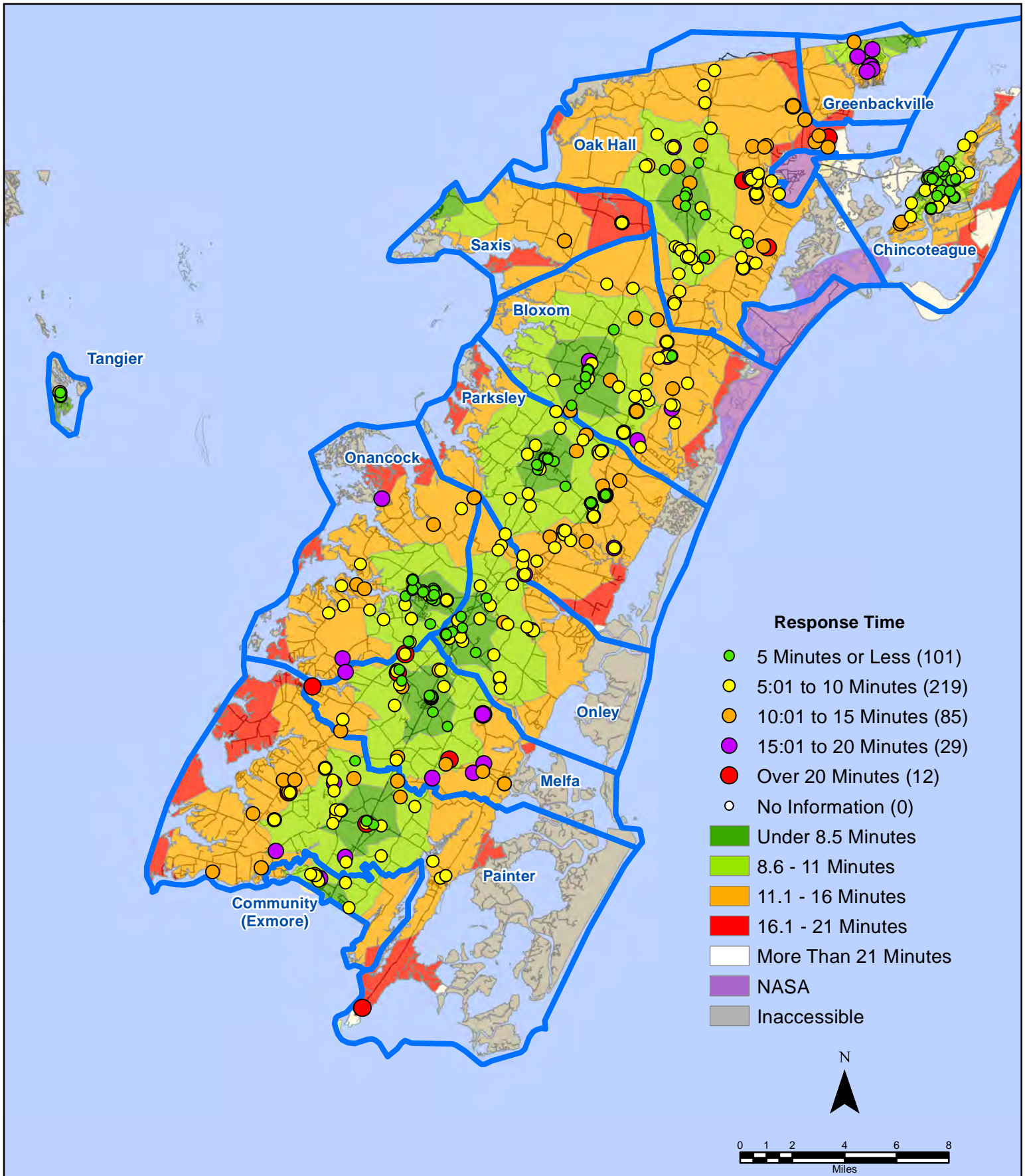
January 2017 EMS Calls By Prime Unit



January 2017 EMS Calls By Prime Unit



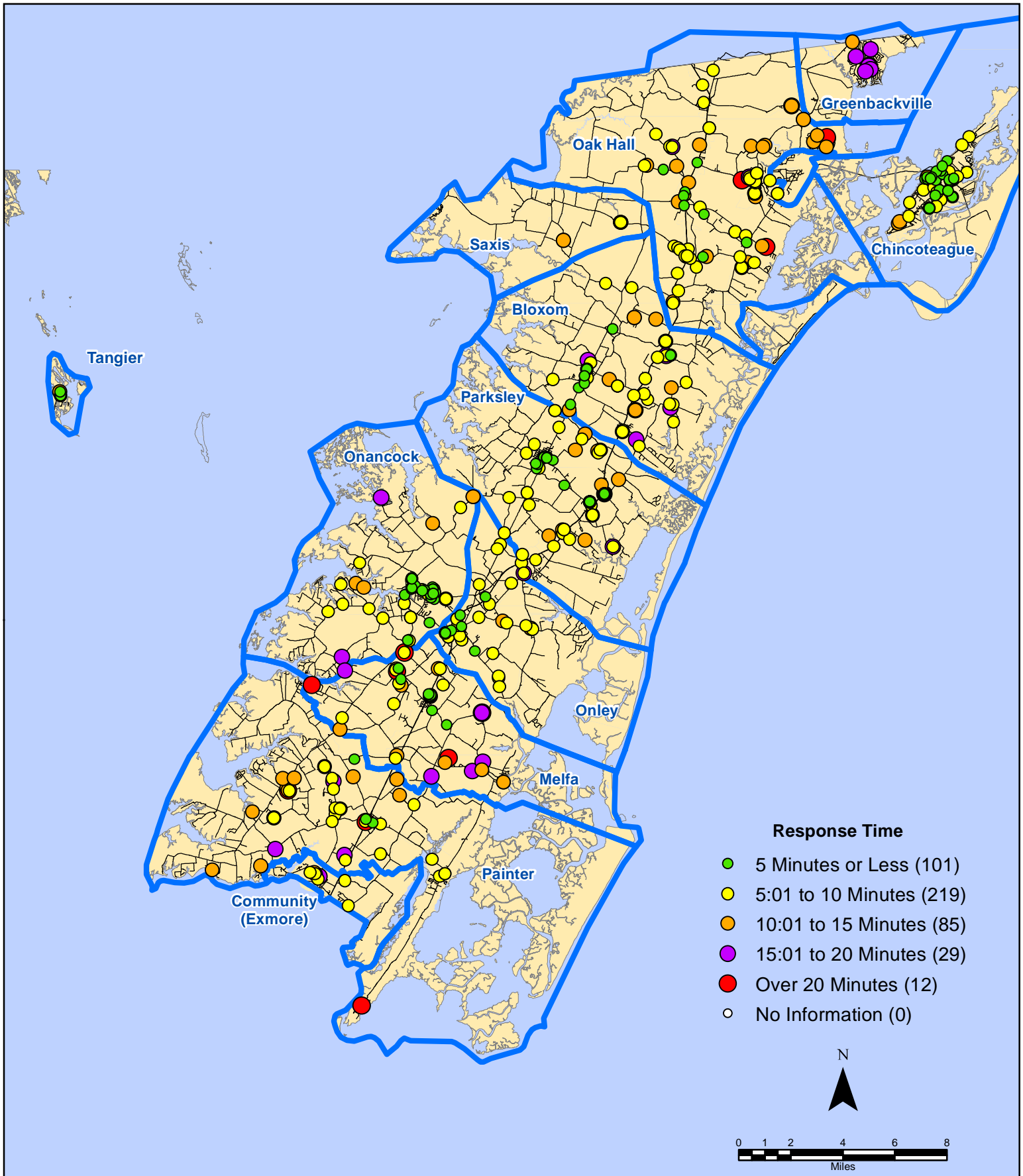
January 2017 EMS Calls By Response Time



All points are plotted using X and Y coordinates provided by the ESVA 911 Center. Points may be plotted over one another when they are in close proximity.

Map Prepared by the Accomack County Department of Planning & Community Development using data from the ESVA 911 Center. - February 14, 2017

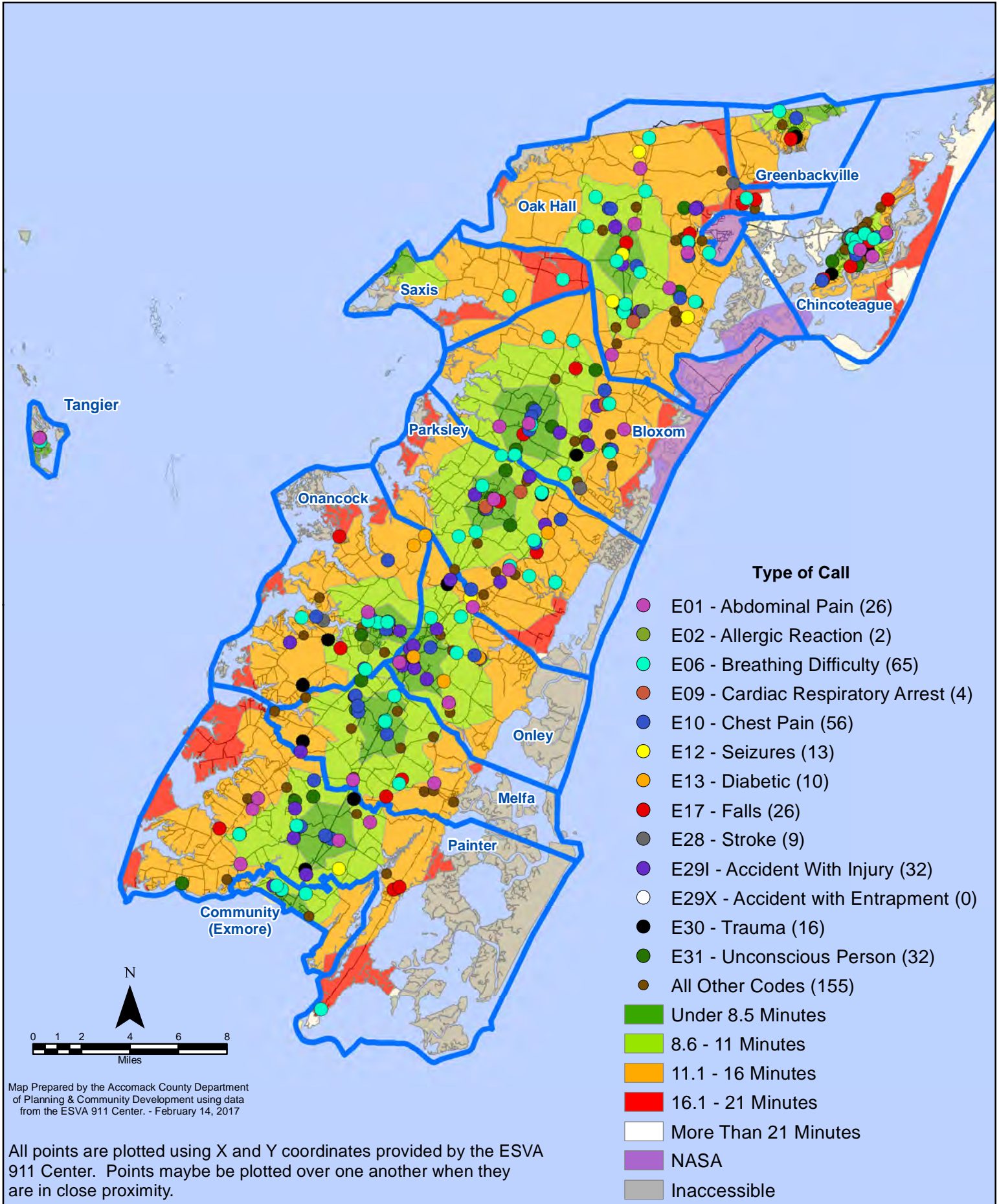
January 2017 EMS Calls By Response Time



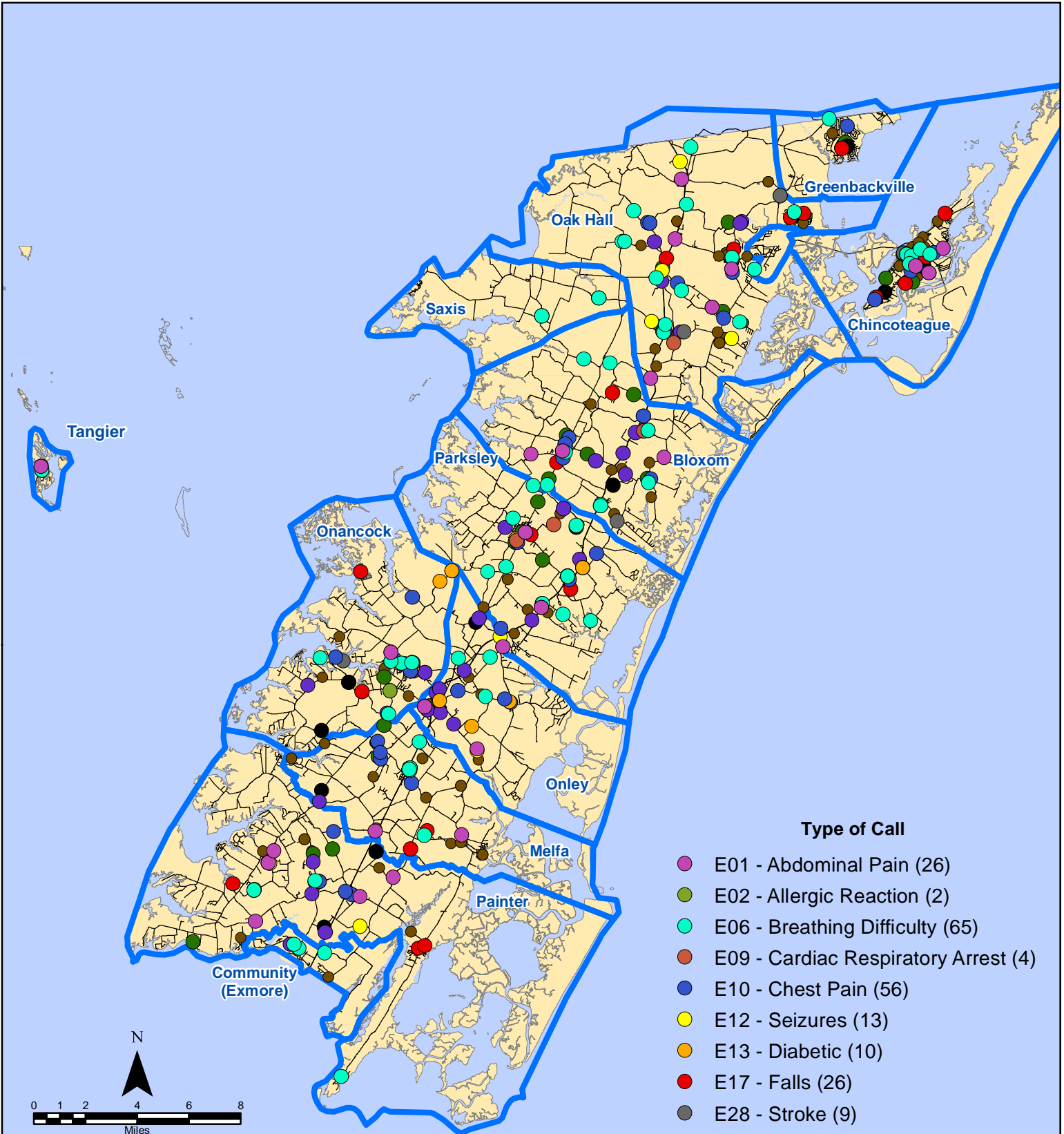
All points are plotted using X and Y coordinates provided by the ESVA 911 Center. Points may be plotted over one another when they are in close proximity.

Map Prepared by the Accomack County Department of Planning & Community Development using data from the ESVA 911 Center. - February 14, 2017

January 2017 EMS Calls By Type

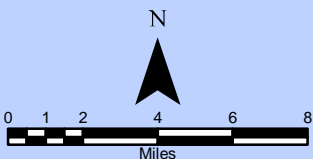


January 2017 EMS Calls By Type



Type of Call

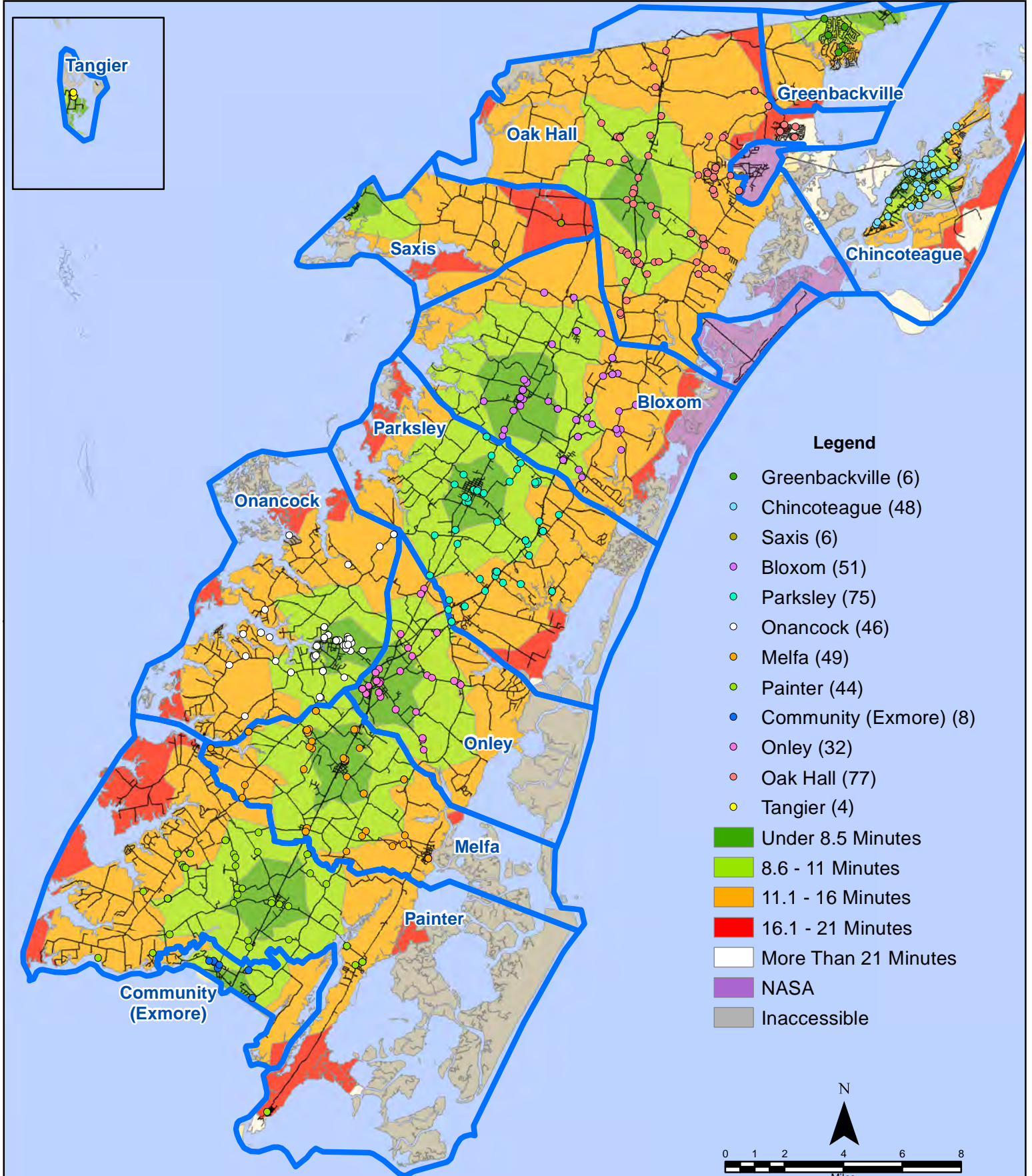
- E01 - Abdominal Pain (26)
- E02 - Allergic Reaction (2)
- E06 - Breathing Difficulty (65)
- E09 - Cardiac Respiratory Arrest (4)
- E10 - Chest Pain (56)
- E12 - Seizures (13)
- E13 - Diabetic (10)
- E17 - Falls (26)
- E28 - Stroke (9)
- E29I - Accident With Injury (32)
- E29X - Accident with Entrapment (0)
- E30 - Trauma (16)
- E31 - Unconscious Person (32)
- All Other Codes (155)



Map Prepared by the Accomack County Department of Planning & Community Development using data from the ESVA 911 Center. - February 14, 2017

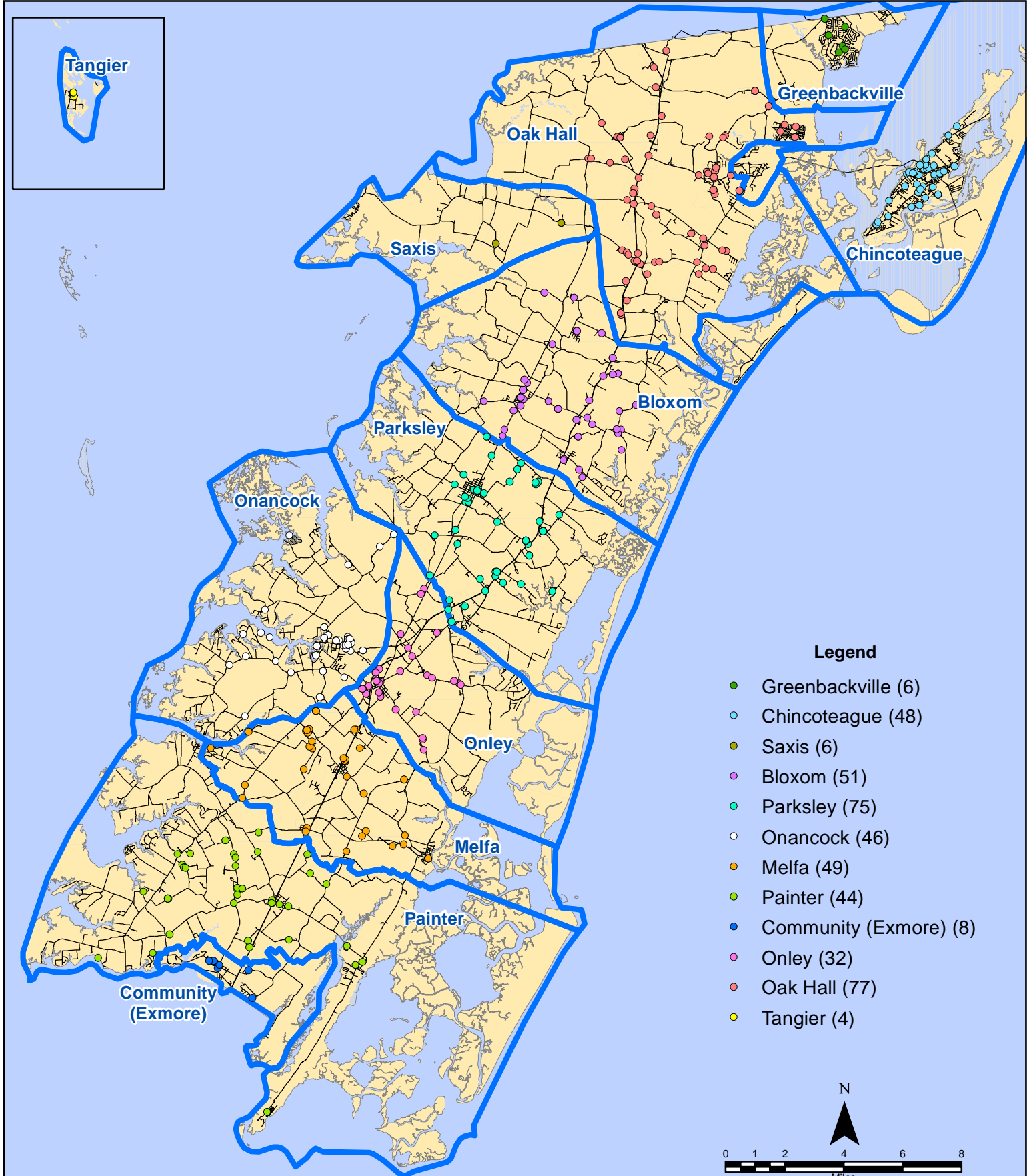
All points are plotted using X and Y coordinates provided by the ESVA 911 Center. Points may be plotted over one another when they are in close proximity.

January 2017 EMS Calls By District



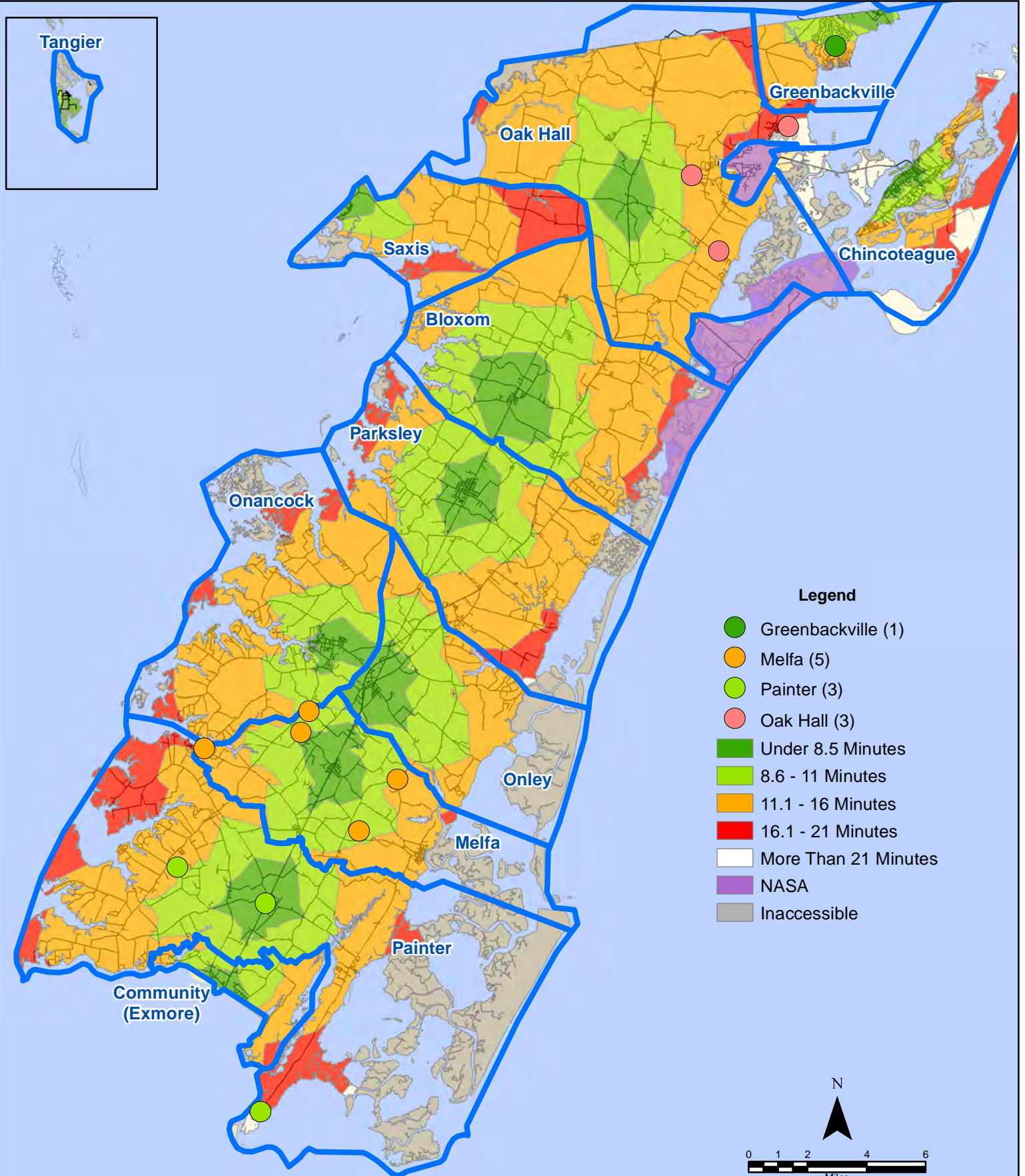
All points are plotted using X and Y coordinates provided by the ESVA 911 Center. Points may be plotted over one another when they are in close proximity.

January 2017 EMS Calls By District



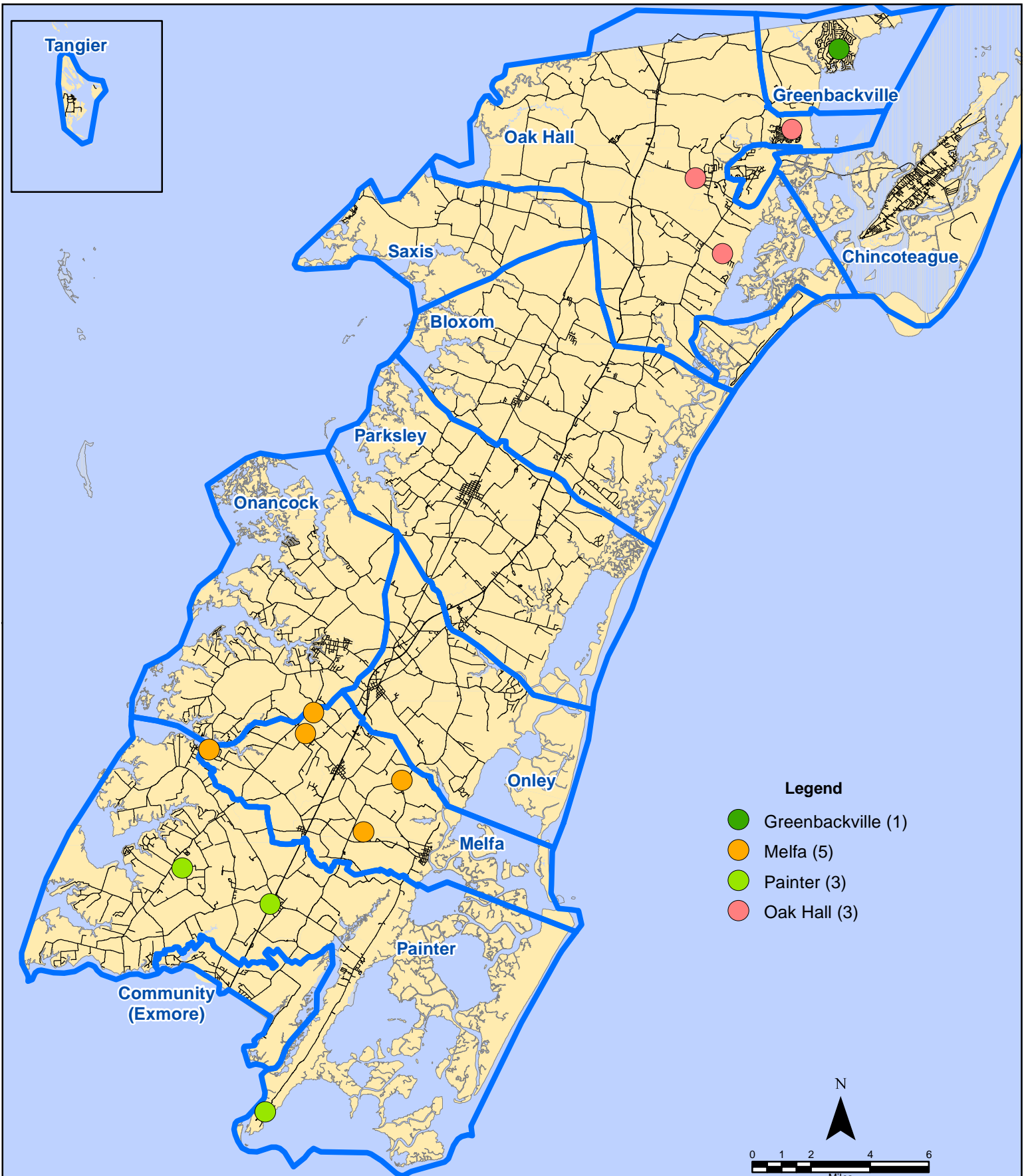
All points are plotted using X and Y coordinates provided by the ESVA 911 Center.
 Points may be plotted over one another when they are in close proximity.

January 2017 EMS Calls With Response Time Greater Than 20 Mins.



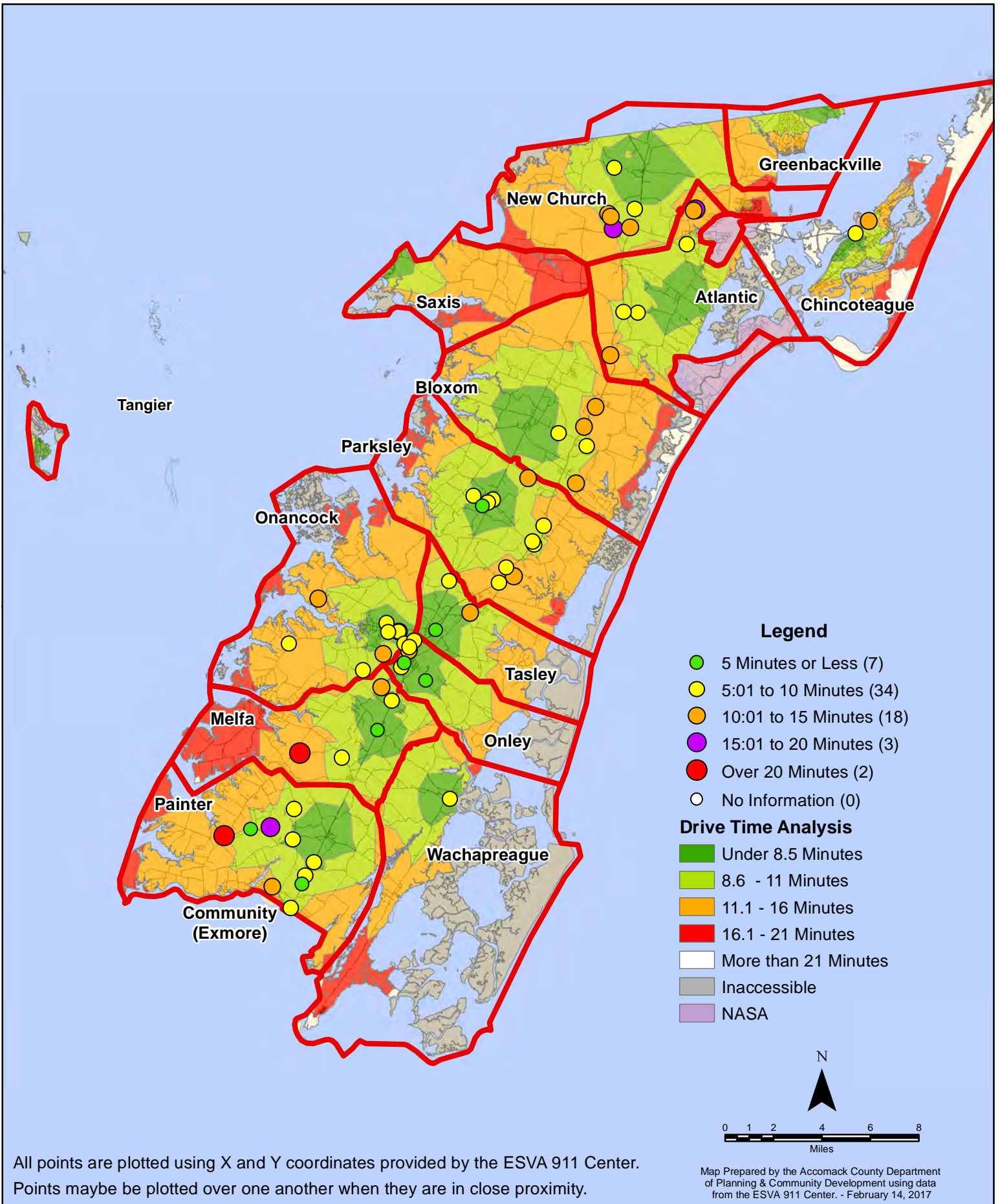
All points are plotted using X and Y coordinates provided by the ESVA 911 Center. Points may be plotted over one another when they are in close proximity.

January 2017 EMS Calls With Response Time Greater Than 20 Mins.



All points are plotted using X and Y coordinates provided by the ESVA 911 Center. Points may be plotted over one another when they are in close proximity.

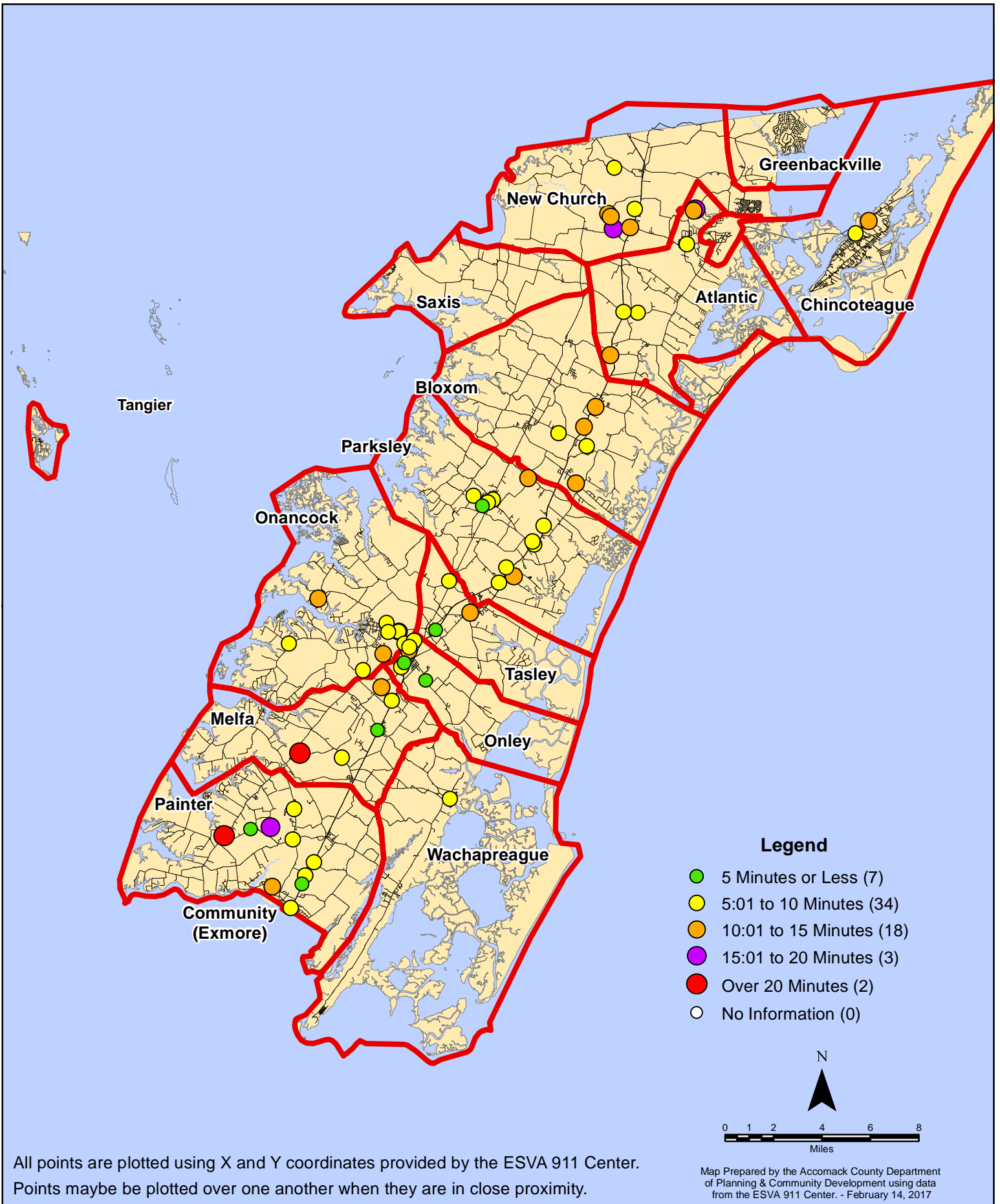
January 2017 Fire Calls By Response Time



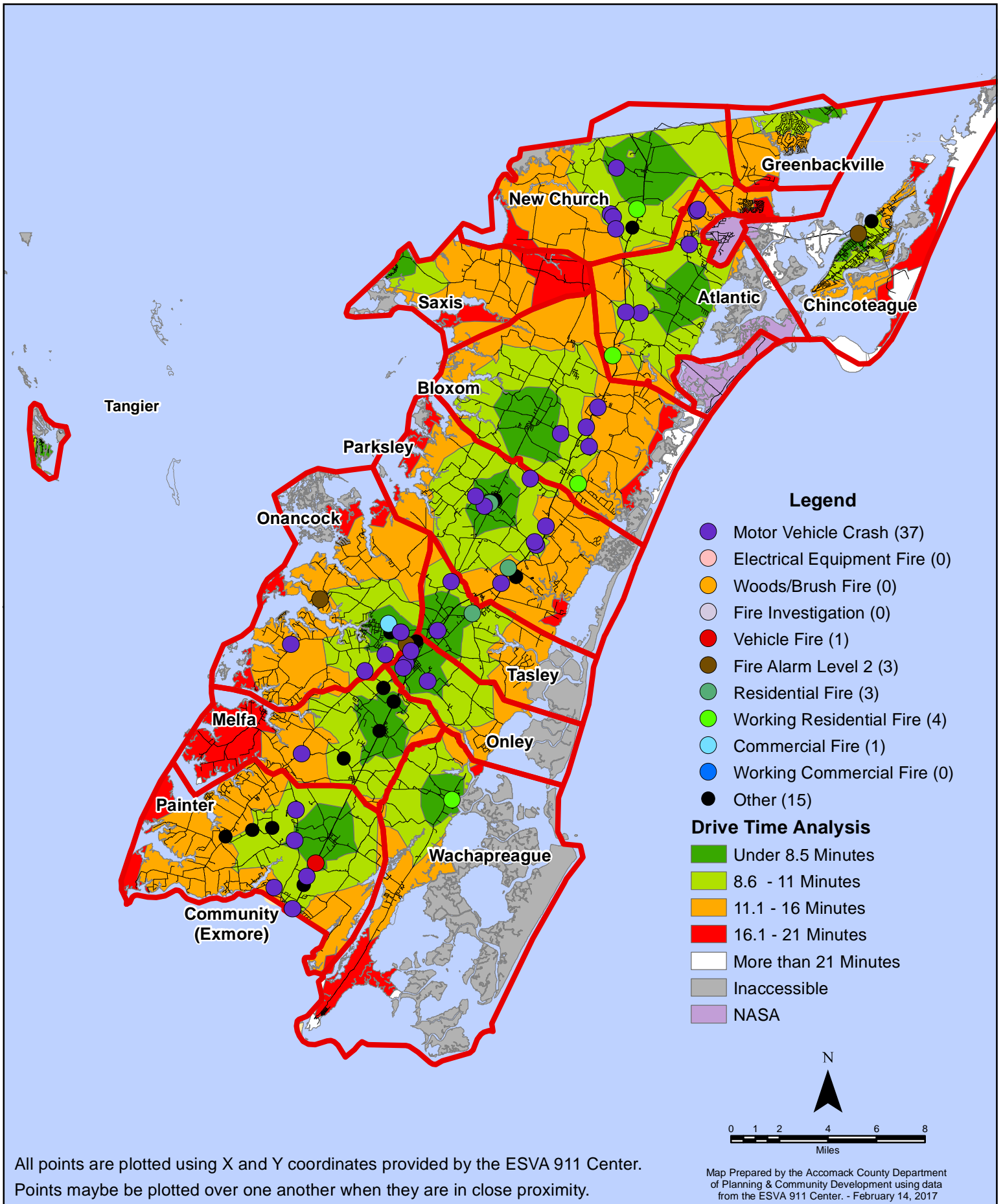
All points are plotted using X and Y coordinates provided by the ESVA 911 Center. Points may be plotted over one another when they are in close proximity.

Map Prepared by the Accomack County Department of Planning & Community Development using data from the ESVA 911 Center. - February 14, 2017

January 2017 Fire Calls By Response Time



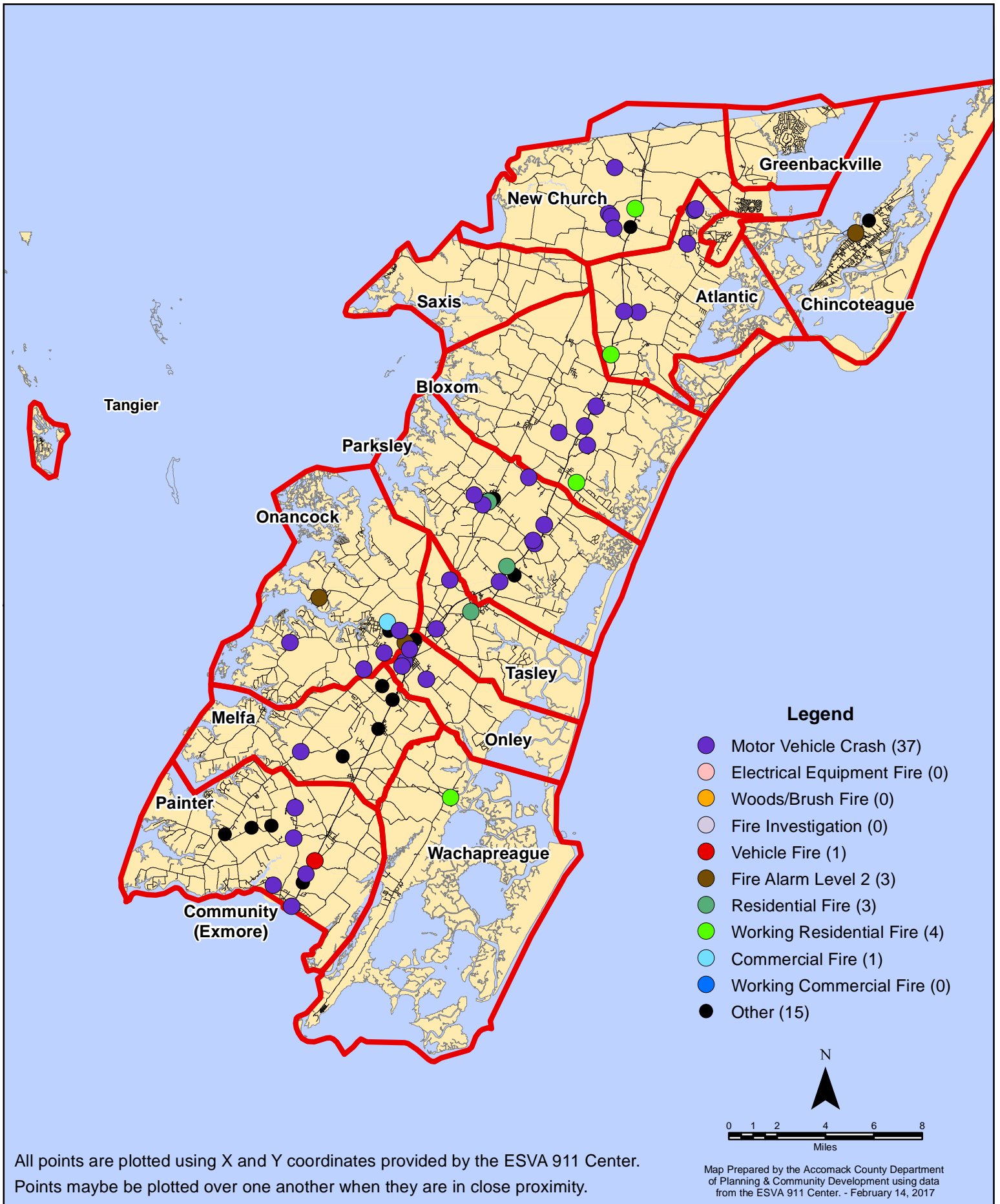
January 2017 Fire Calls By Type



All points are plotted using X and Y coordinates provided by the ESVA 911 Center. Points may be plotted over one another when they are in close proximity.

Map Prepared by the Accomack County Department of Planning & Community Development using data from the ESVA 911 Center. - February 14, 2017

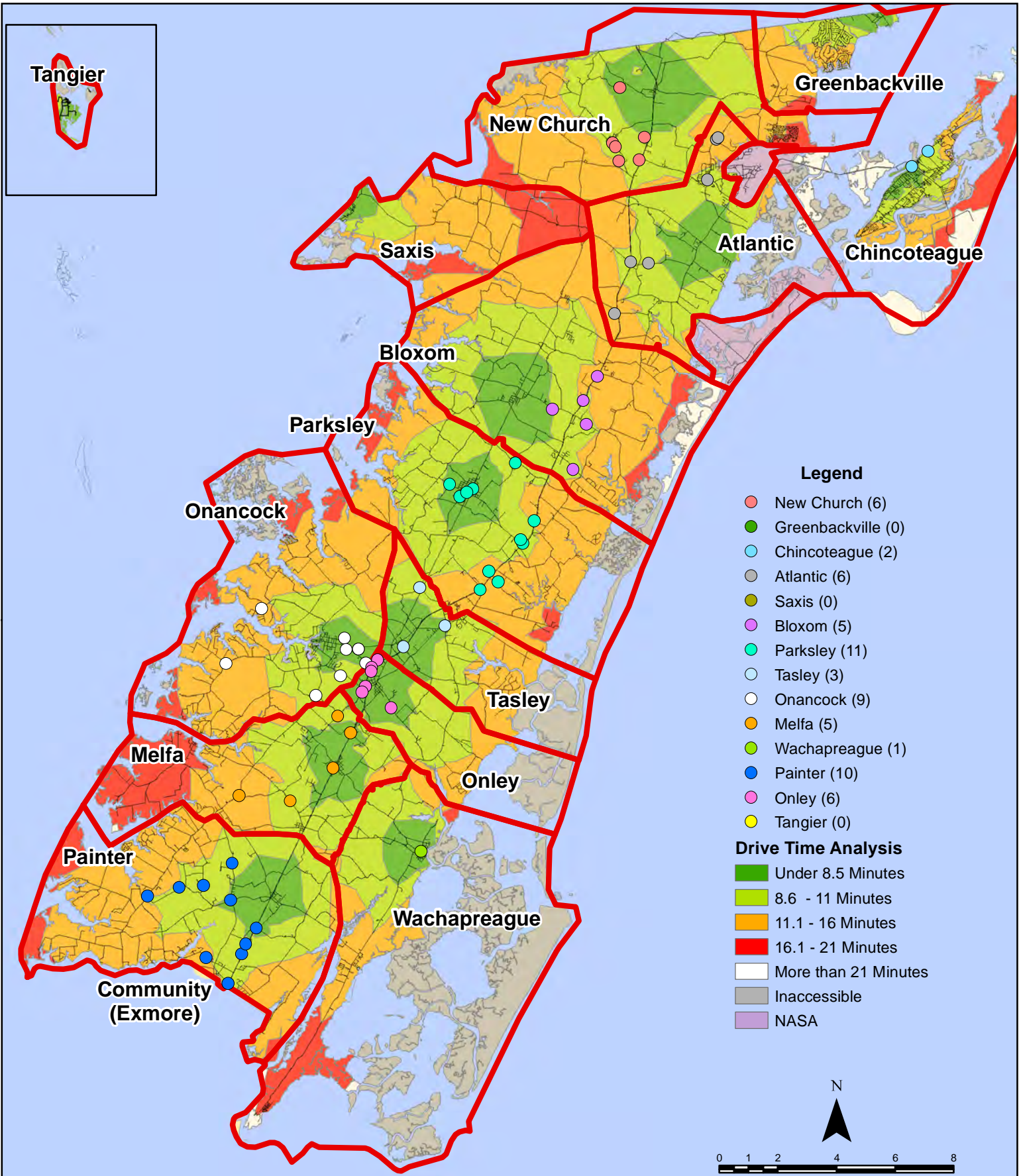
January 2017 Fire Calls By Type



All points are plotted using X and Y coordinates provided by the ESVA 911 Center. Points may be plotted over one another when they are in close proximity.

Map Prepared by the Accomack County Department of Planning & Community Development using data from the ESVA 911 Center. - February 14, 2017

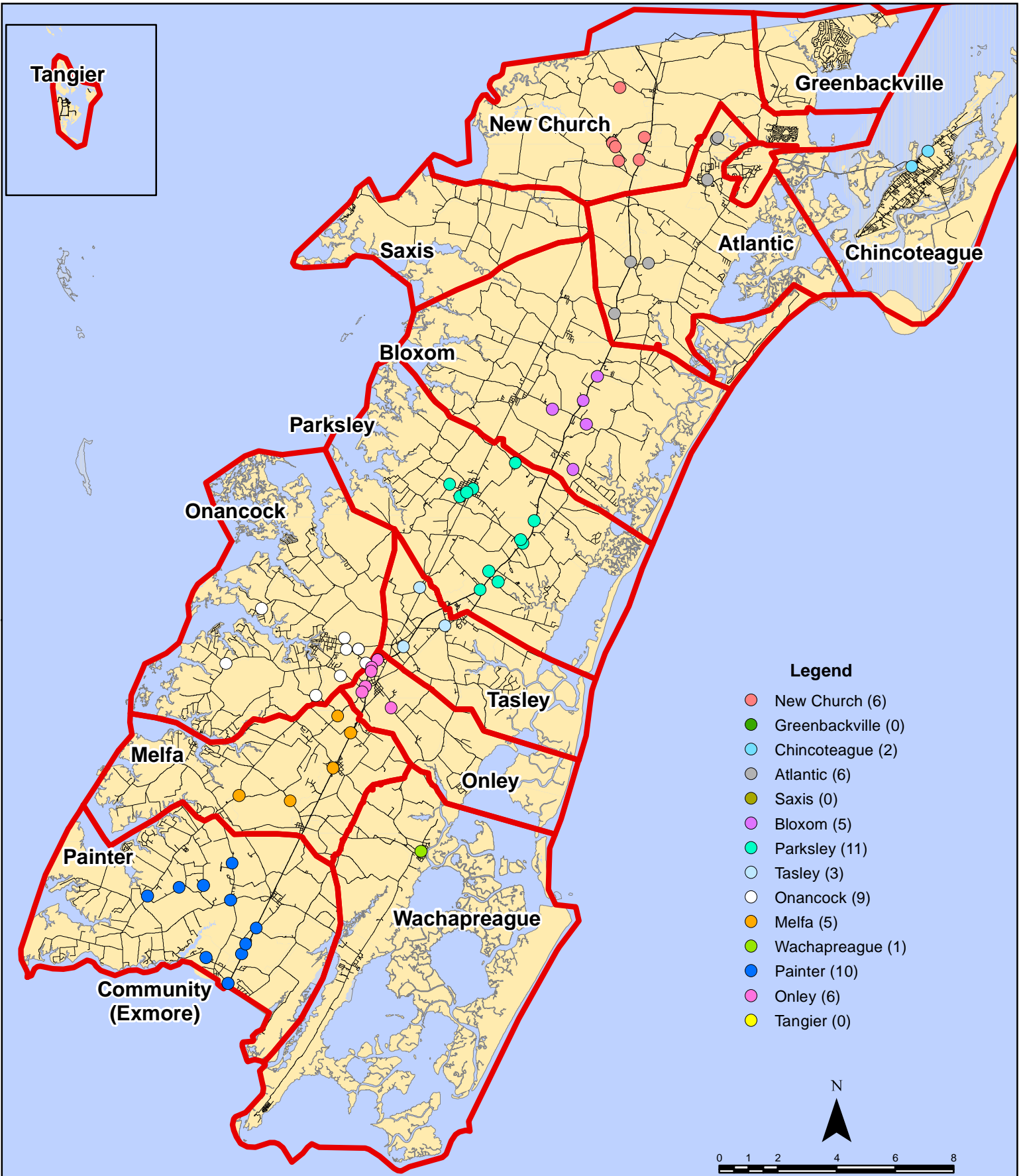
January 2017 Fire Calls By District



All points are plotted using X and Y coordinates provided by the ESVA 911 Center. Points may be plotted over one another when they are in close proximity.

Map Prepared by the Accomack County Department of Planning & Community Development using data from the ESVA 911 Center. - February 14, 2017

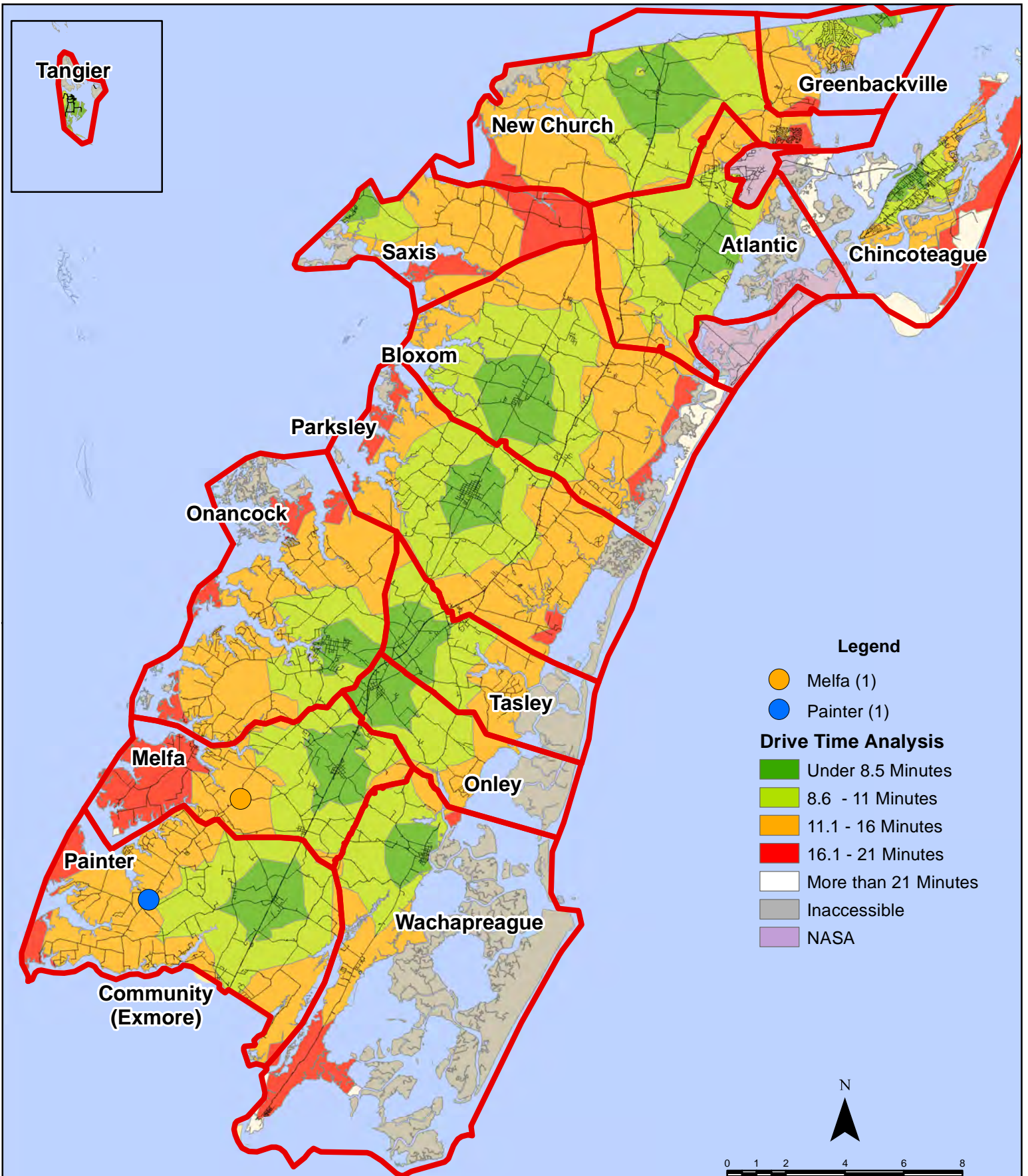
January 2017 Fire Calls By District



All points are plotted using X and Y coordinates provided by the ESVA 911 Center. Points may be plotted over one another when they are in close proximity.

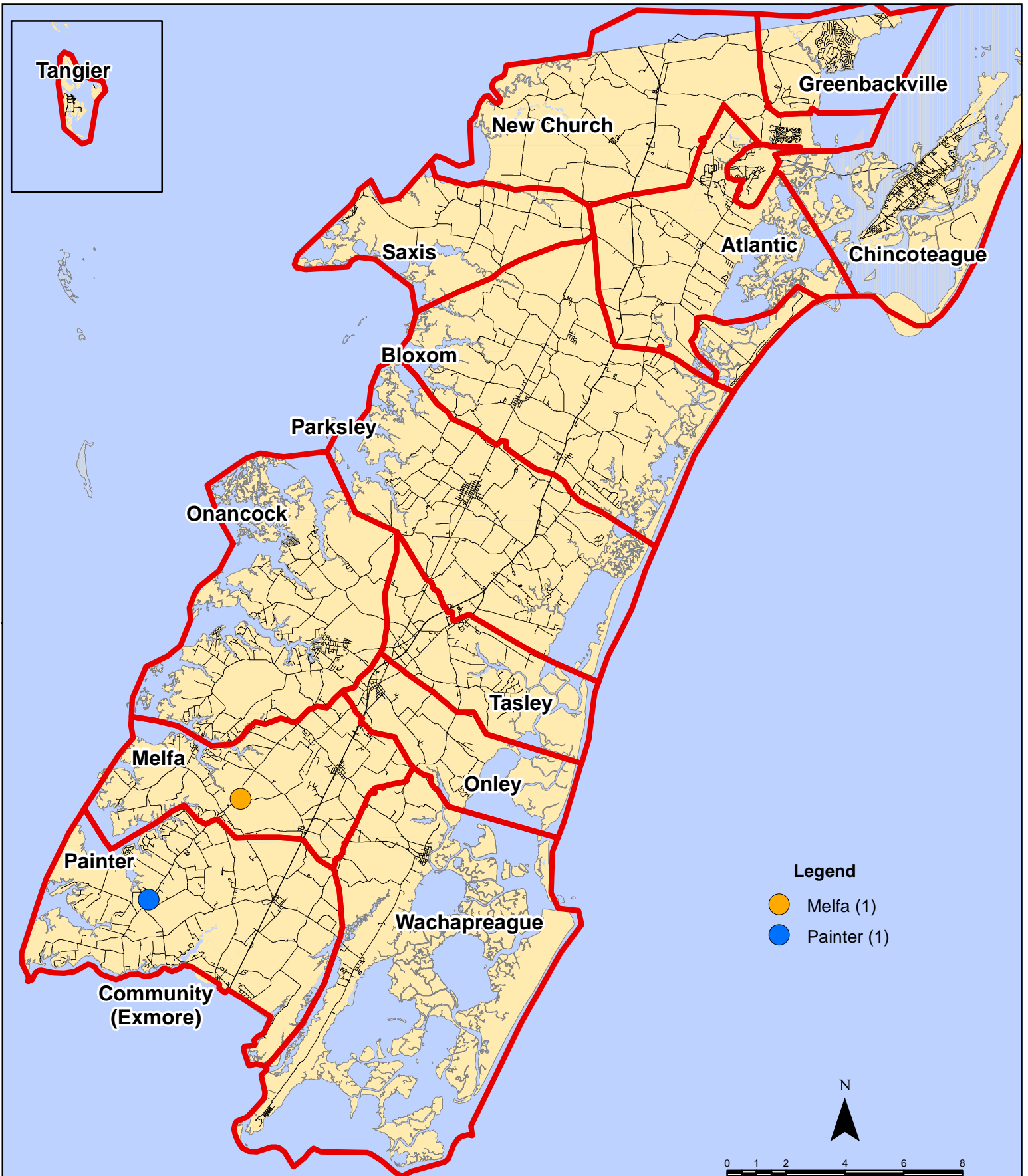
Map Prepared by the Accomack County Department of Planning & Community Development using data from the ESVA 911 Center. - February 14, 2017

January 2017 Fire Calls With Response Time Greater Than 20 Mins.

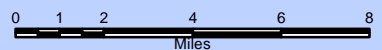


All points are plotted using X and Y coordinates provided by the ESVA 911 Center. Points maybe be plotted over one another when they are in close proximity.

January 2017 Fire Calls With Response Time Greater Than 20 Mins.



All points are plotted using X and Y coordinates provided by the ESVA 911 Center. Points maybe be plotted over one another when they are in close proximity.



Map Prepared by the Accomack County Department of Planning & Community Development using data from the ESVA 911 Center. - February 14, 2017