

May 2017

Fire - Performance Measure Data *					
Response District	Total Calls in District	Greater than 20 min. Response Time	Calls Handled by other agency	Longest Response Time	Overall Station Benchmark %
New Church	7	0	0	0:16:41	100.0%
Greenbackville	1	0	0	0:03:51	100.0%
Chincoteague	9	1	0	0:20:54	88.9%
Atlantic	9	0	0	0:15:06	100.0%
Saxis	2	0	0	0:14:39	100.0%
Bloxom	11	0	0	0:11:58	100.0%
Parksley	11	0	0	0:13:25	100.0%
Tasley	5	0	0	0:12:09	100.0%
Onancock	0	0	0	0	#DIV/0!
Melfa	9	0	1	0:15:56	100.0%
Wachapreague	2	0	0	0:12:44	100.0%
Painter	12	0	0	0:18:31	100.0%
Onley	7	0	0	0:10:58	100.0%
Tangier	0	0	0	0	#DIV/0!
System Totals	85	1	1	0:20:54	98.8%

EMS - Performance Measure Data						
Response District	Total Calls in District	Greater than 20 min. Response Time	Longest Response Time	Calls Handled by other agency	Station Benchmark Compliance %	Overall Station Reliability %
Greenbackville	16	2	0:23:38	13	87.50%	18.8%
Chincoteague	77	1	0:21:28	3	98.70%	96.1%
Saxis	16	0	0:15:28	3	100.00%	81.3%
Bloxom	62	1	0:21:06	5	98.39%	91.9%
Parksley	88	1	0:20:48	2	98.86%	97.7%
Onancock	38	1	0:20:23	2	97.37%	94.7%
Melfa	31	1	0:25:43	2	96.77%	93.5%
Wachapreague (Painter)	38	0	0:17:36	1	100.00%	97.4%
Onley	34	0	0:16:57	34	100.00%	0.0%
Oak Hall	91	2	0:33:37	5	97.80%	94.5%
Tangier	7	0	0:12:19	0	100.00%	100.0%
Community (Exmore)	19	1	0:23:19	4	94.74%	78.9%
System Totals	517	10	0:33:37	74	98.07%	85.7%

Station Receiving Aid	EMS Mutual Aid Data														
	Station Giving Aid														
	Greenbackville	Chincoteague	Saxis	Bloxom	Parksley	Onancock	Melfa	Wachapreague/Painter	Onley	Oak Hall	Community (Exmore)	Northampton	NORS	2nd Call	3rd Call
Greenbackville		1											12		
Chincoteague													3		1
Saxis													3		
Bloxom					3								2		
Parksley				2										2	
Onancock							2						1		1
Melfa						1	1						1	1	
Wachapreague (Painter)							1						1		
Onley					1	25	8						34		
Oak Hall		4		1									1	4	
Community (Exmore)								4					2	2	
Northampton Co.															
Wallops															
Totals	0	5	0	3	4	26	11	5	0	20	0	0	56	16	2

Transport Destination			
Hospital Destination by Unit	Riverside - Shore Memorial	PRMC	Other
Chincoteague	14	23	
Saxis	5	4	
Bloxom	34	3	
Parksley	52		
Onancock	39		
Melfa	22		
Wach. (Painter)	32		
Onley			
Oak Hall	25	25	1
Totals	235	61	1

Benchmark = The Accomack County Board of Supervisors established a 20 minute standard for emergency response.

NORS = No Response by station or the call was handled by another station or agency.

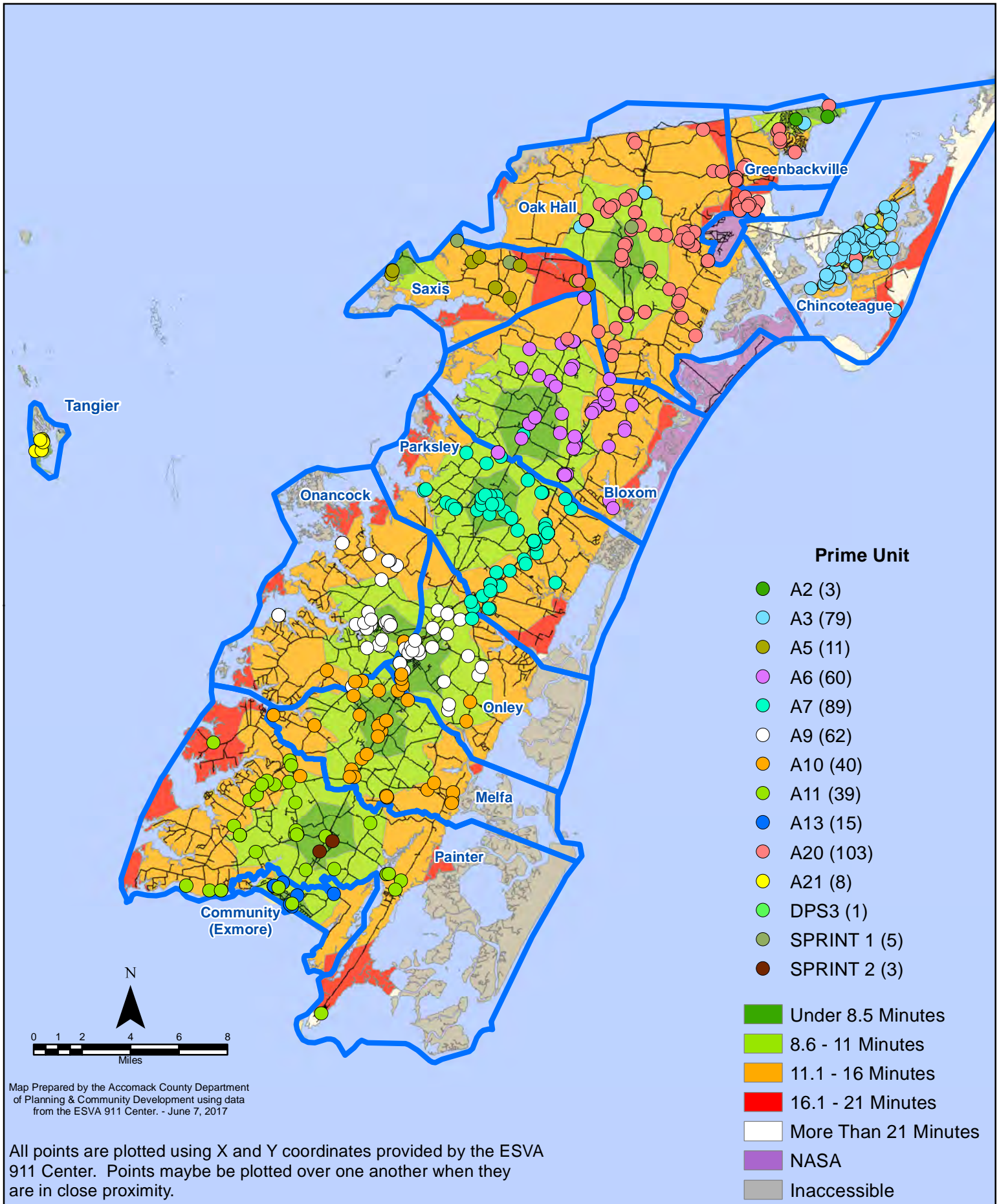
2nd Call = 2nd ambulance call received while first ambulance was on another call.

3rd Call = 3rd ambulance call received while first & second ambulances were on other calls.

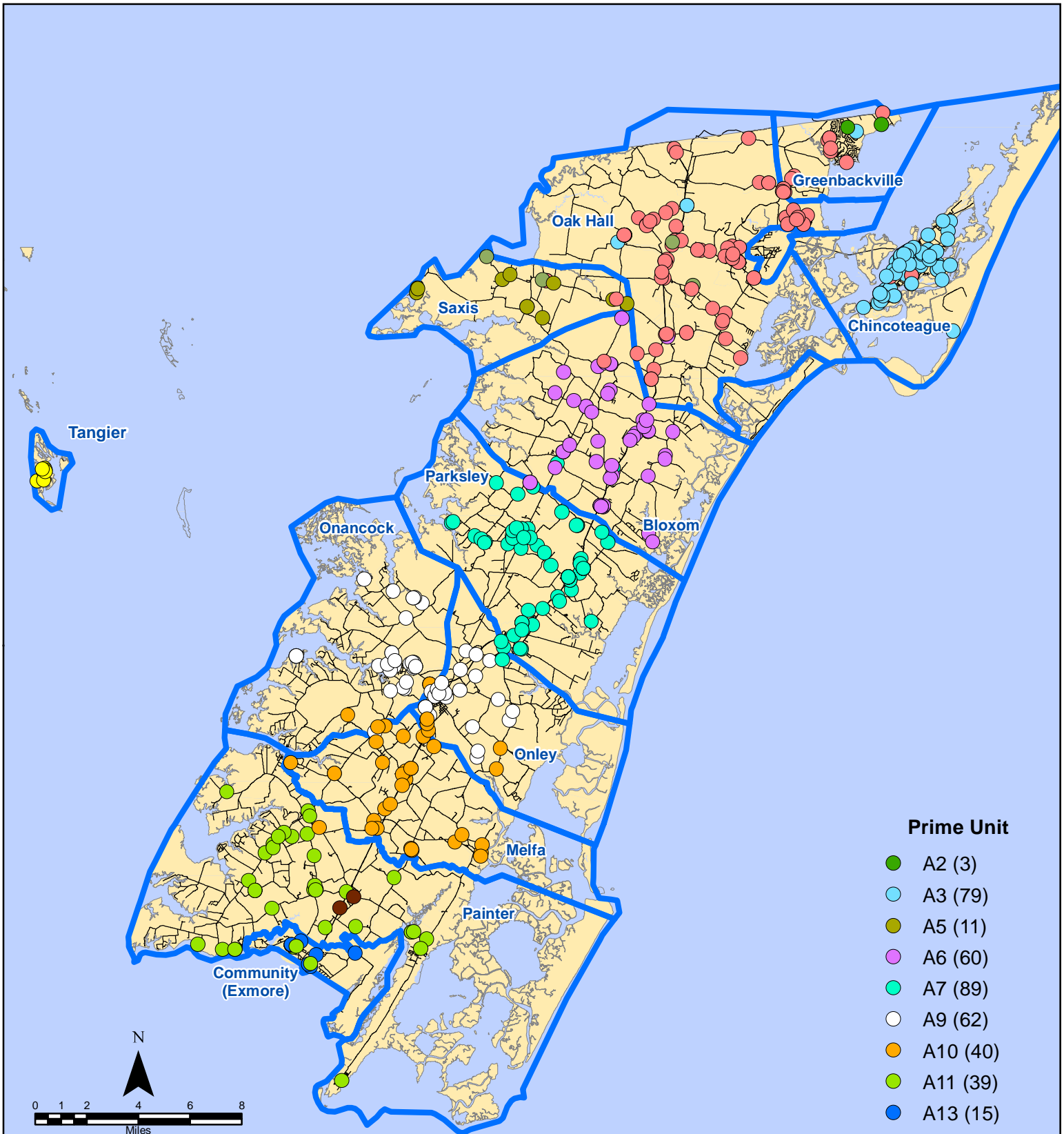
* This data excludes F1 Med (Medical Assist) calls in the Fire Data.

This information was prepared using data supplied by the Eastern Shore of Virginia 911 Center. This information is original incident data only and may not be representative of all units and/or stations who responded to an incident.

May 2017 EMS Calls By Prime Unit



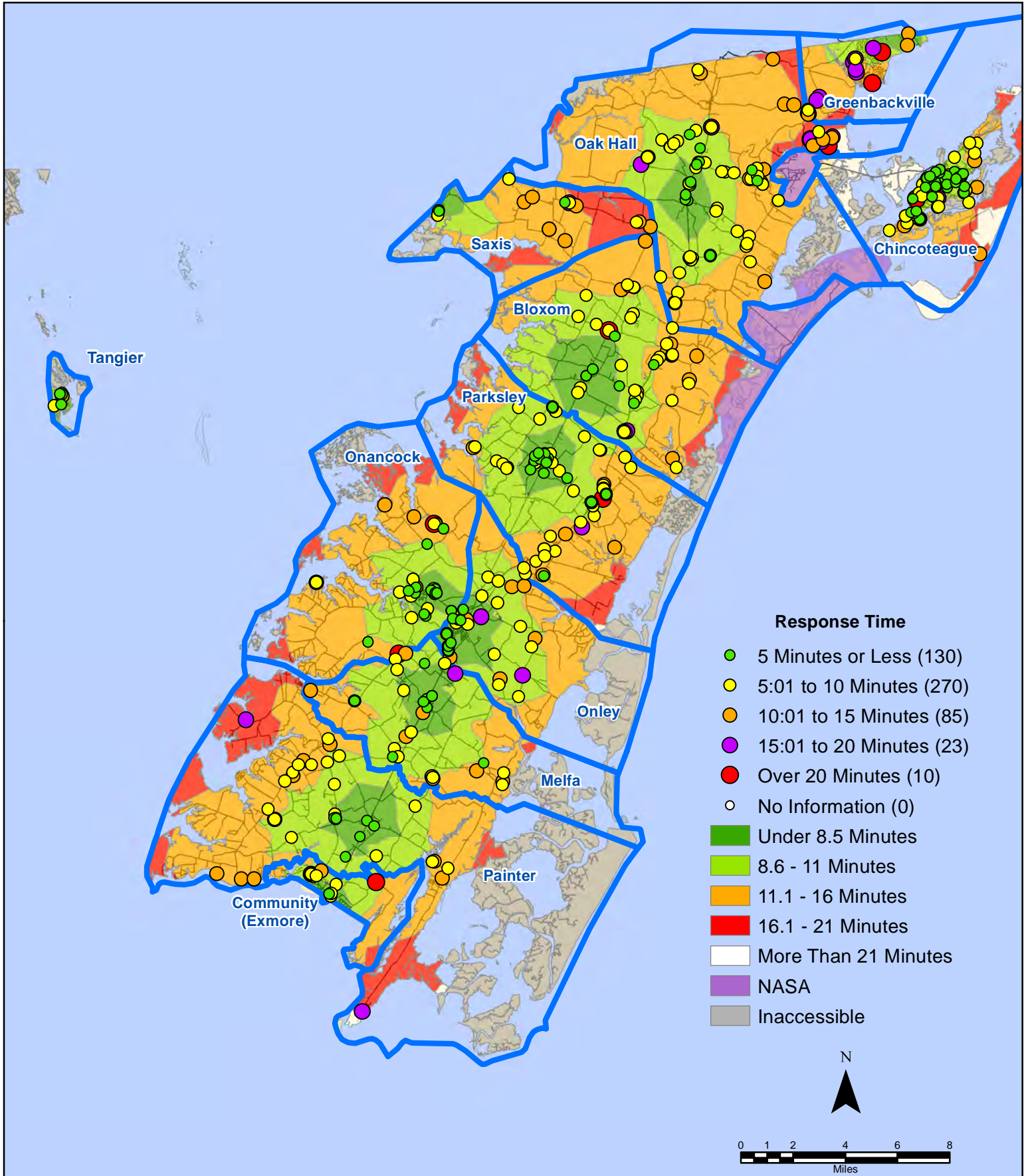
May 2017 EMS Calls By Prime Unit



Map Prepared by the Accomack County Department of Planning & Community Development using data from the ESVA 911 Center. - June 7, 2017

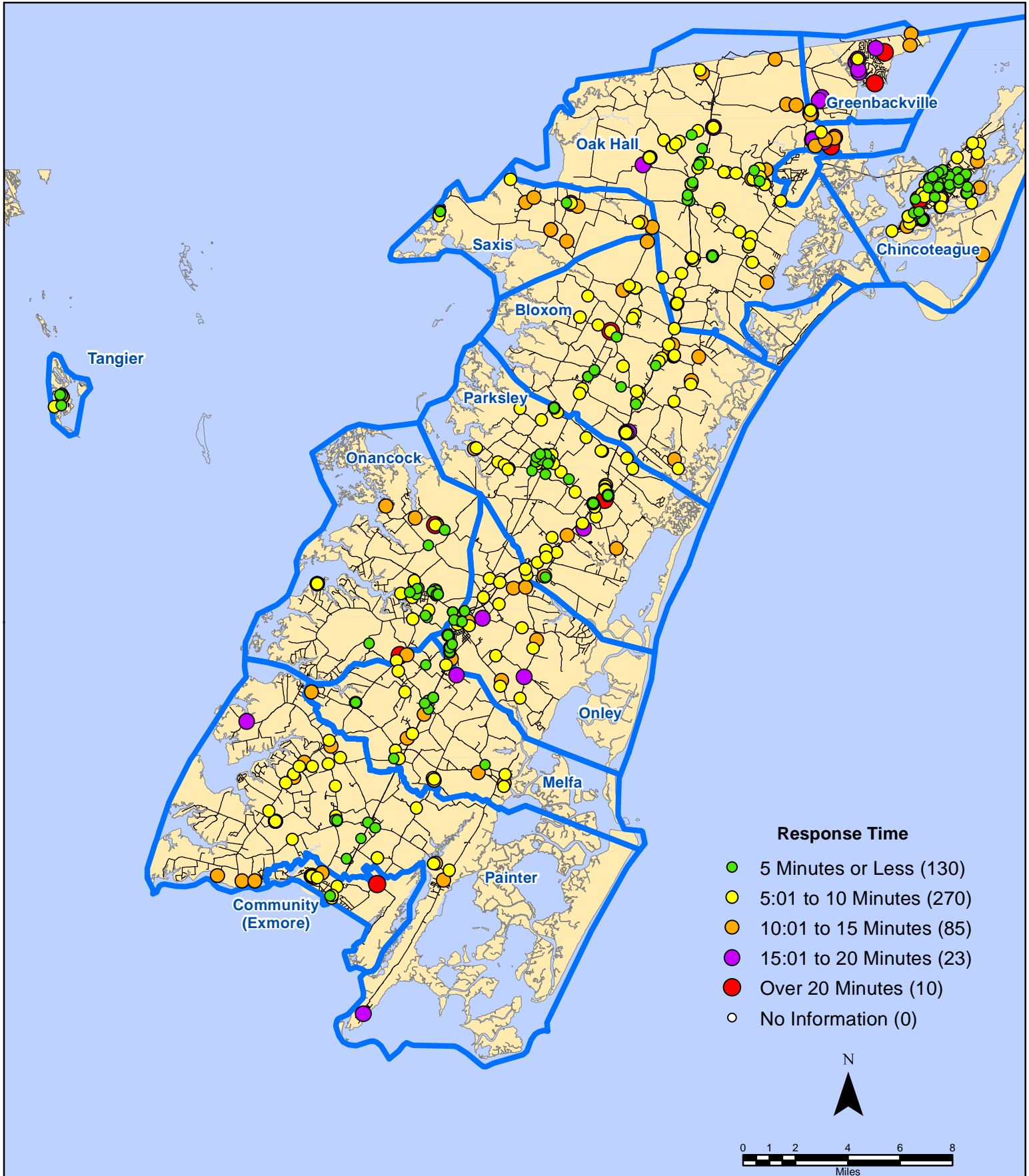
All points are plotted using X and Y coordinates provided by the ESVA 911 Center. Points may be plotted over one another when they are in close proximity.

May 2017 EMS Calls By Response Time



All points are plotted using X and Y coordinates provided by the ESVA 911 Center. Points may be plotted over one another when they are in close proximity.

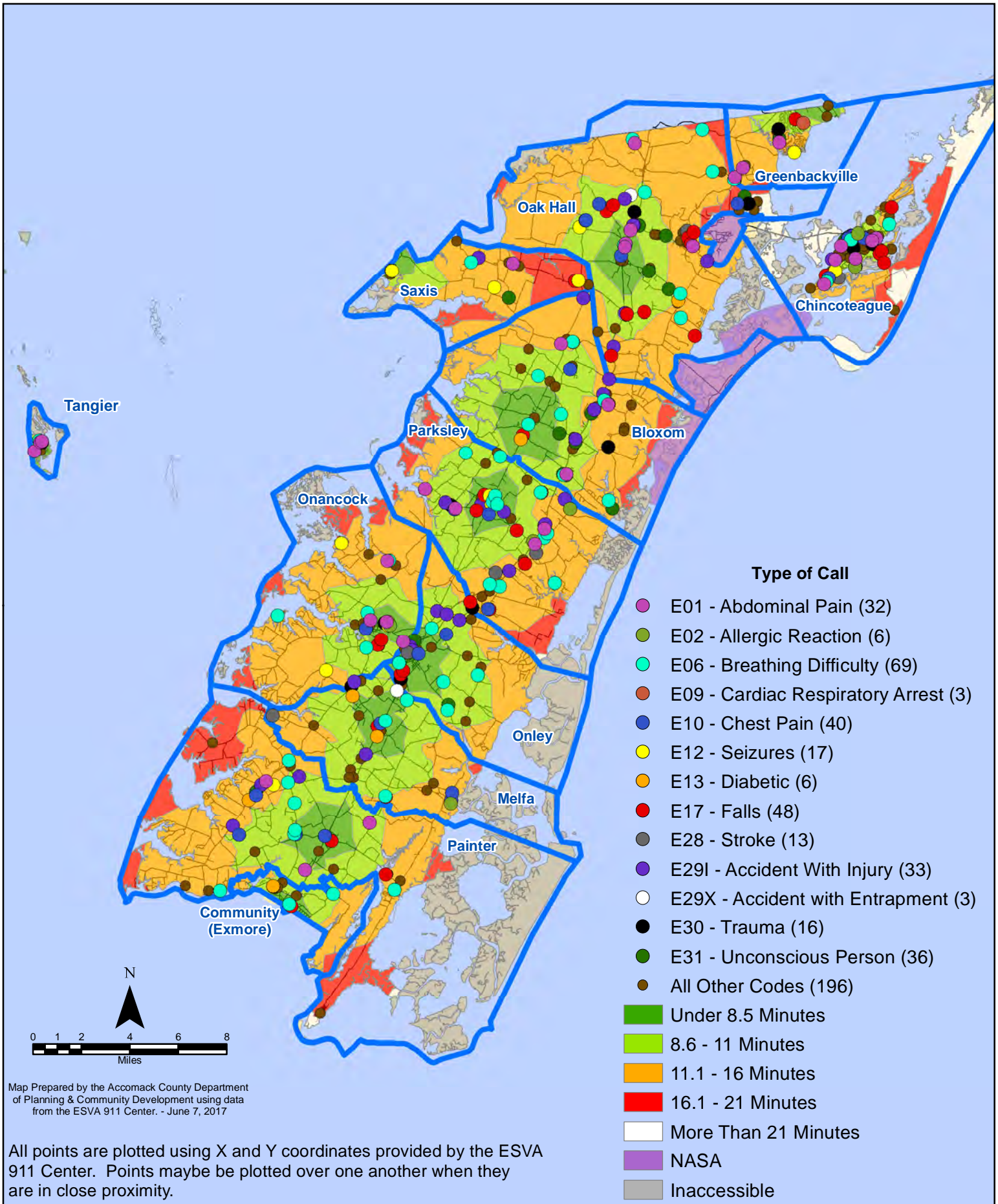
May 2017 EMS Calls By Response Time



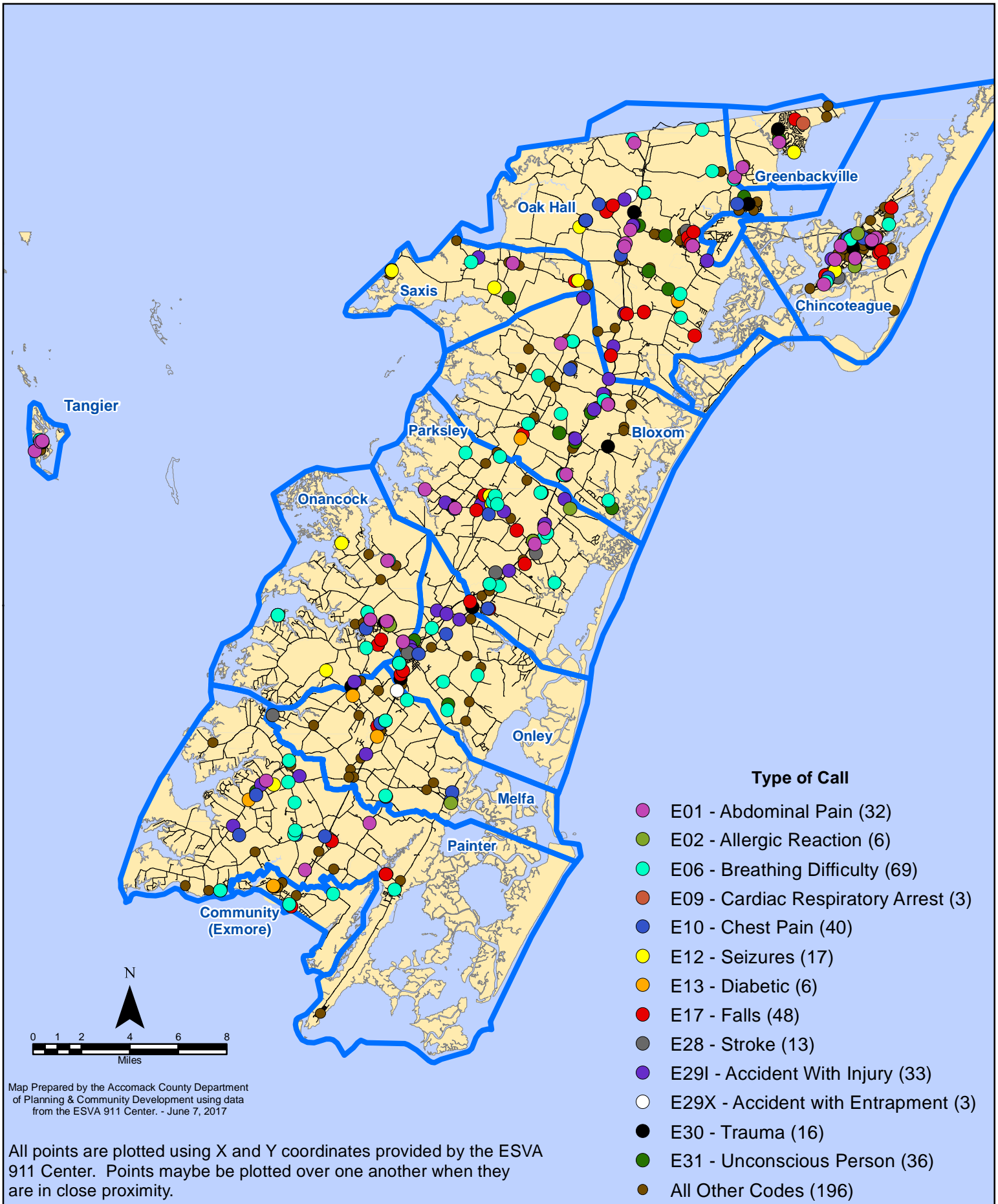
All points are plotted using X and Y coordinates provided by the ESVA 911 Center.
Points may be plotted over one another when they are in close proximity.

Map Prepared by the Accomack County Department
of Planning & Community Development using data
from the ESVA 911 Center. - June 7, 2017

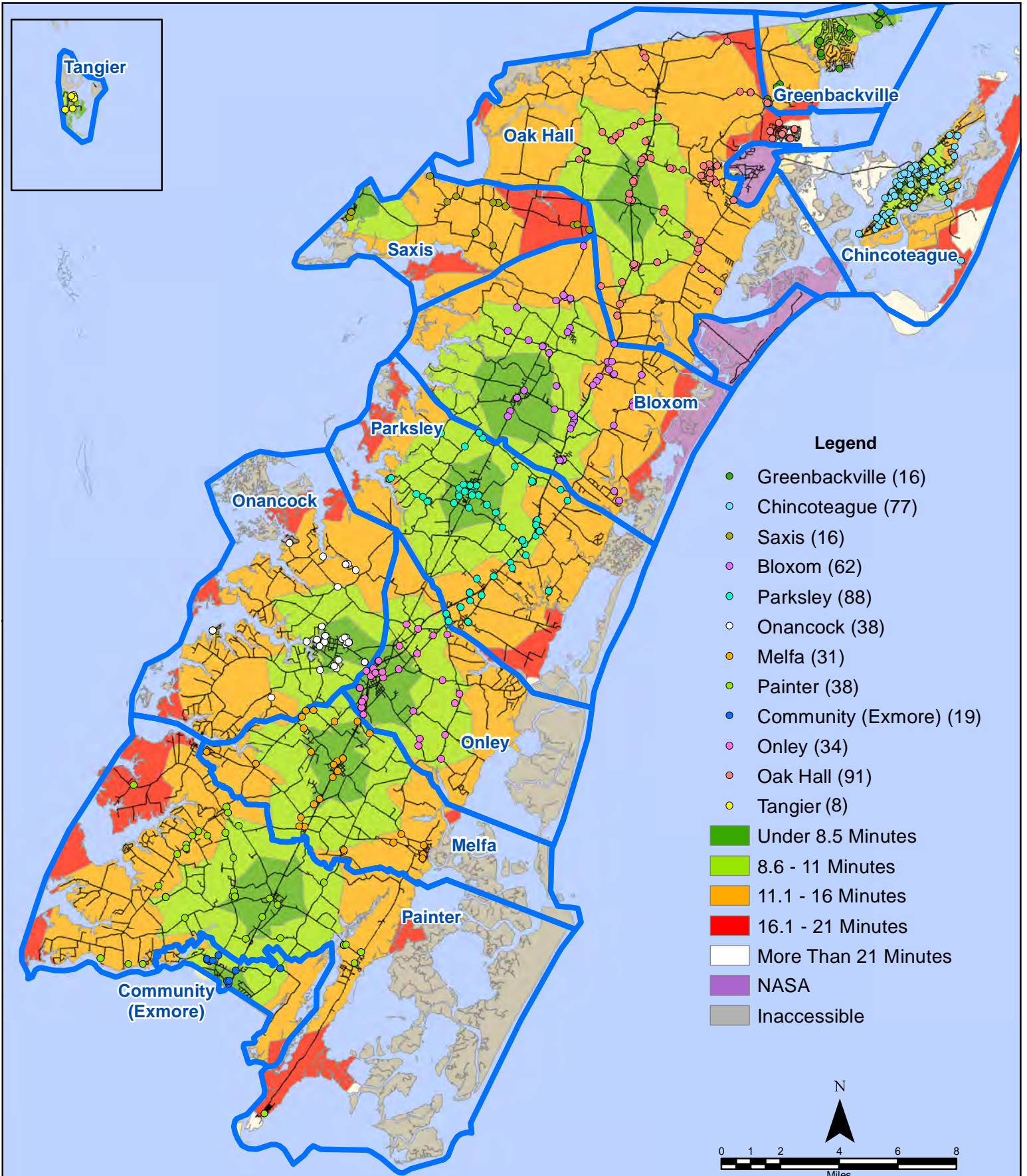
May 2017 EMS Calls By Type



May 2017 EMS Calls By Type

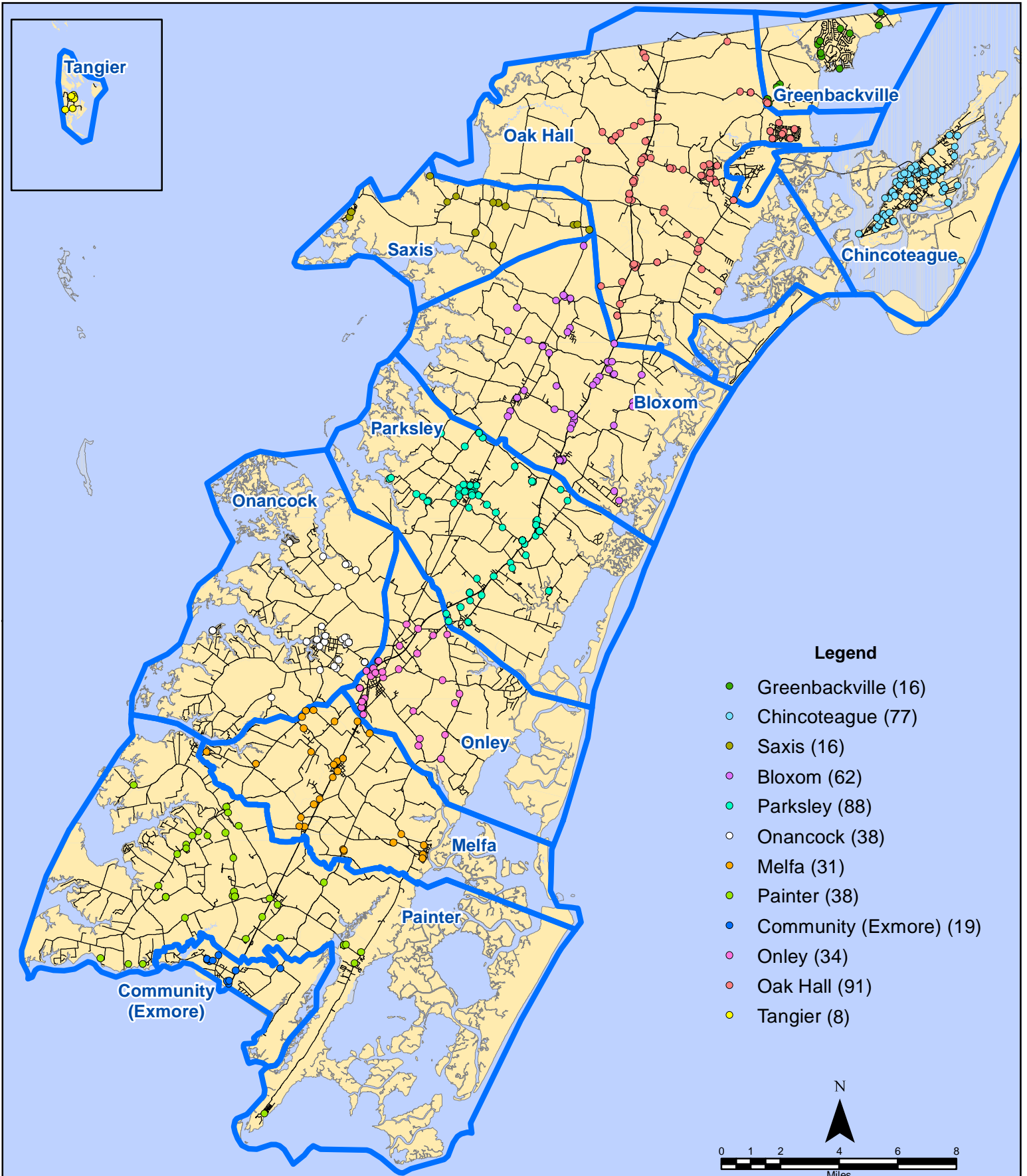


May 2017 EMS Calls By District



All points are plotted using X and Y coordinates provided by the ESVA 911 Center. Points may be plotted over one another when they are in close proximity.

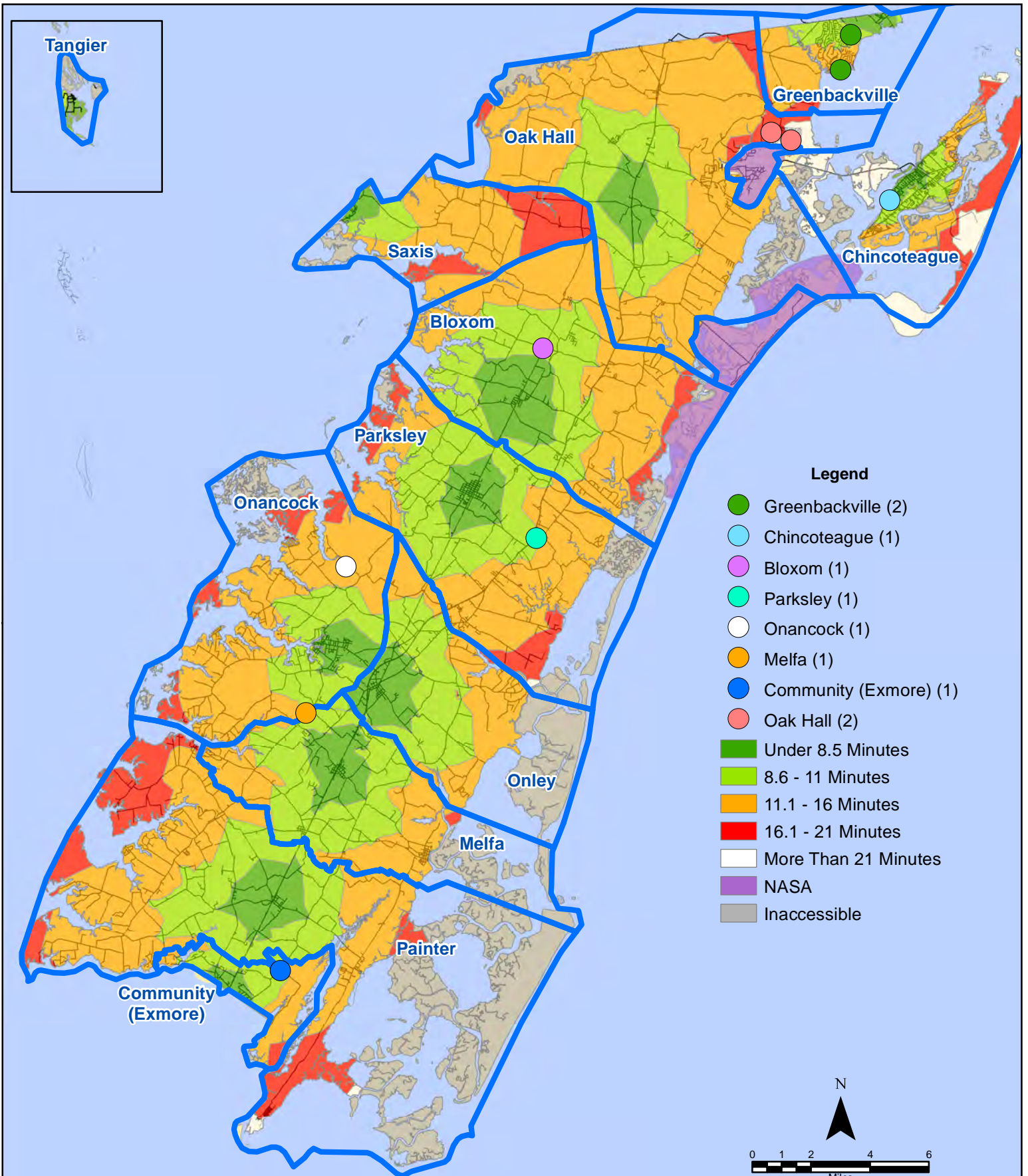
May 2017 EMS Calls By District



All points are plotted using X and Y coordinates provided by the ESVA 911 Center.
Points may be plotted over one another when they are in close proximity.

Map Prepared by the Accomack County Department
of Planning & Community Development using data
from the ESVA 911 Center. - June 7, 2017

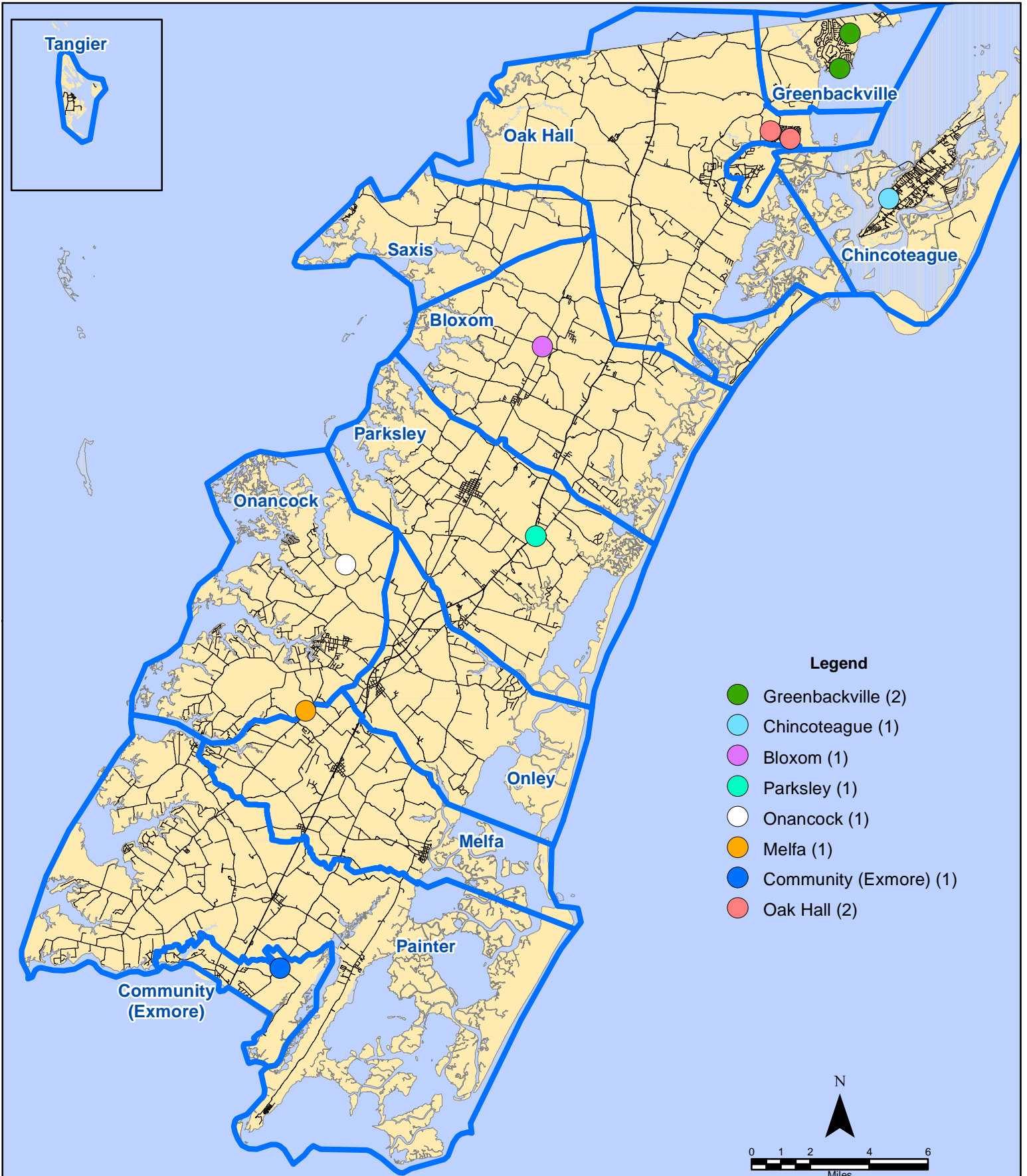
May 2017 EMS Calls With Response Time Greater Than 20 Mins.



All points are plotted using X and Y coordinates provided by the ESVA 911 Center. Points may be plotted over one another when they are in close proximity.

Map Prepared by the Accomack County Department of Planning & Community Development using data from the ESVA 911 Center. - June 7, 2017

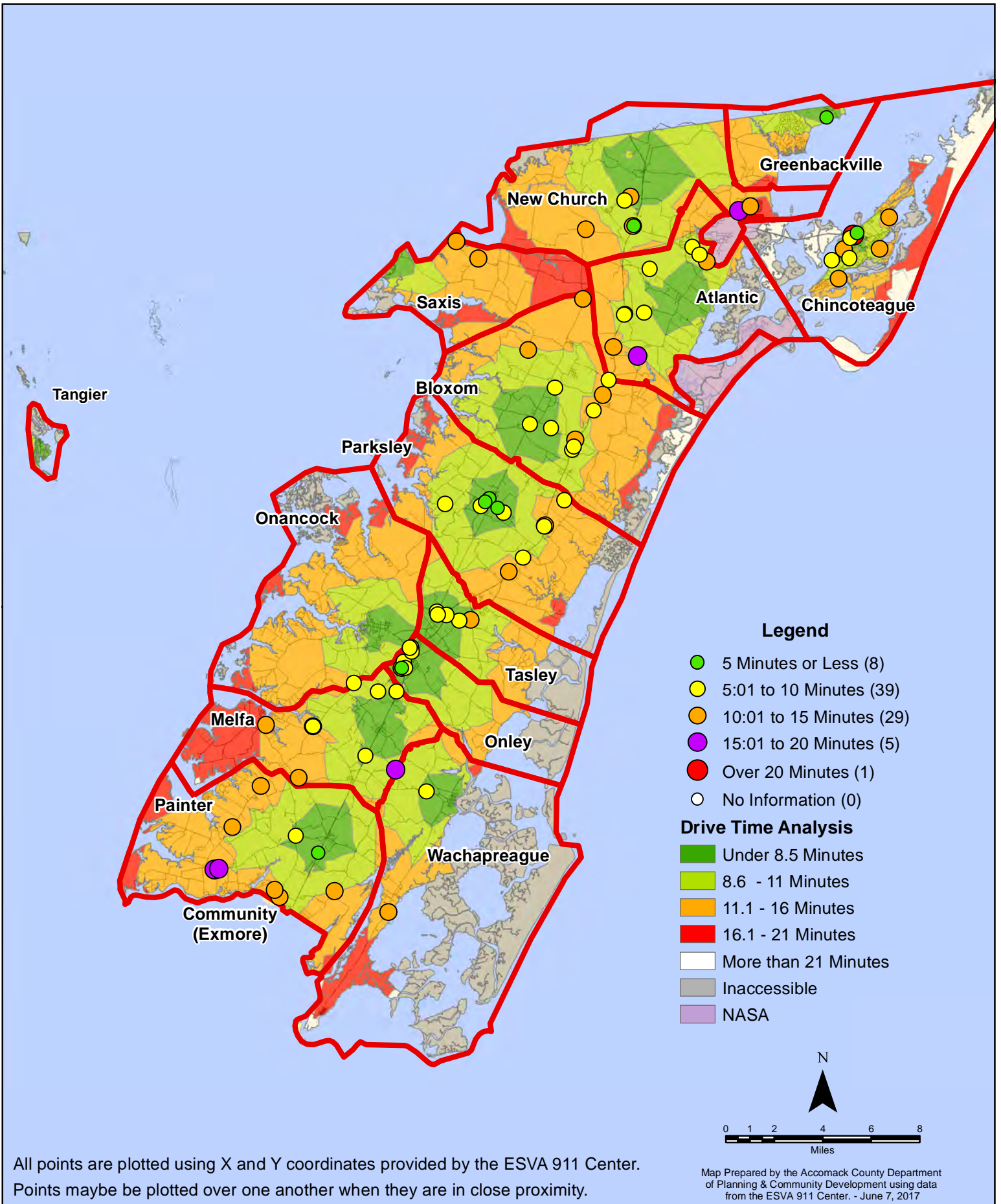
May 2017 EMS Calls With Response Time Greater Than 20 Mins.



All points are plotted using X and Y coordinates provided by the ESVA 911 Center. Points may be plotted over one another when they are in close proximity.

Map Prepared by the Accomack County Department of Planning & Community Development using data from the ESVA 911 Center. - June 7, 2017

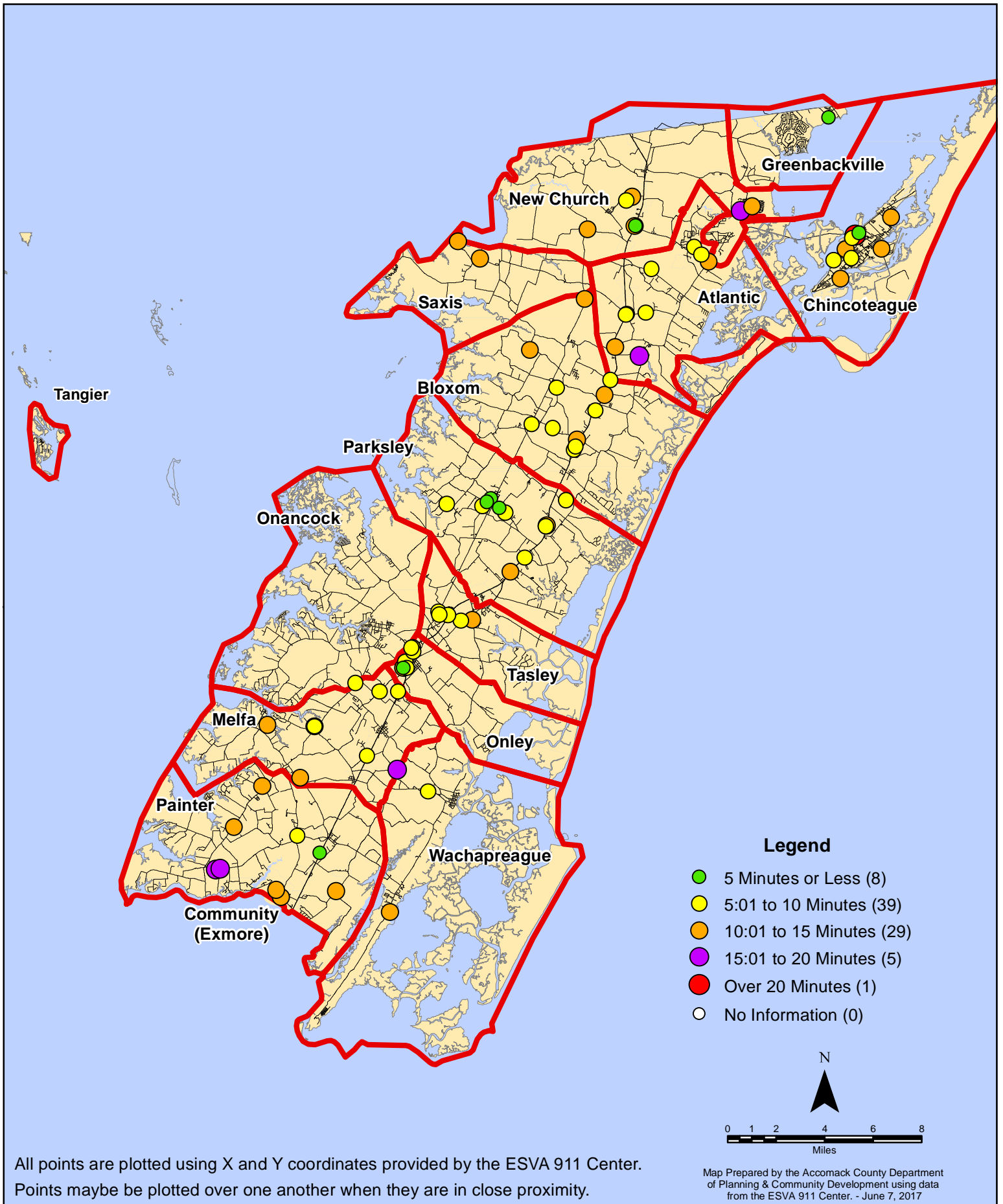
May 2017 Fire Calls By Response Time



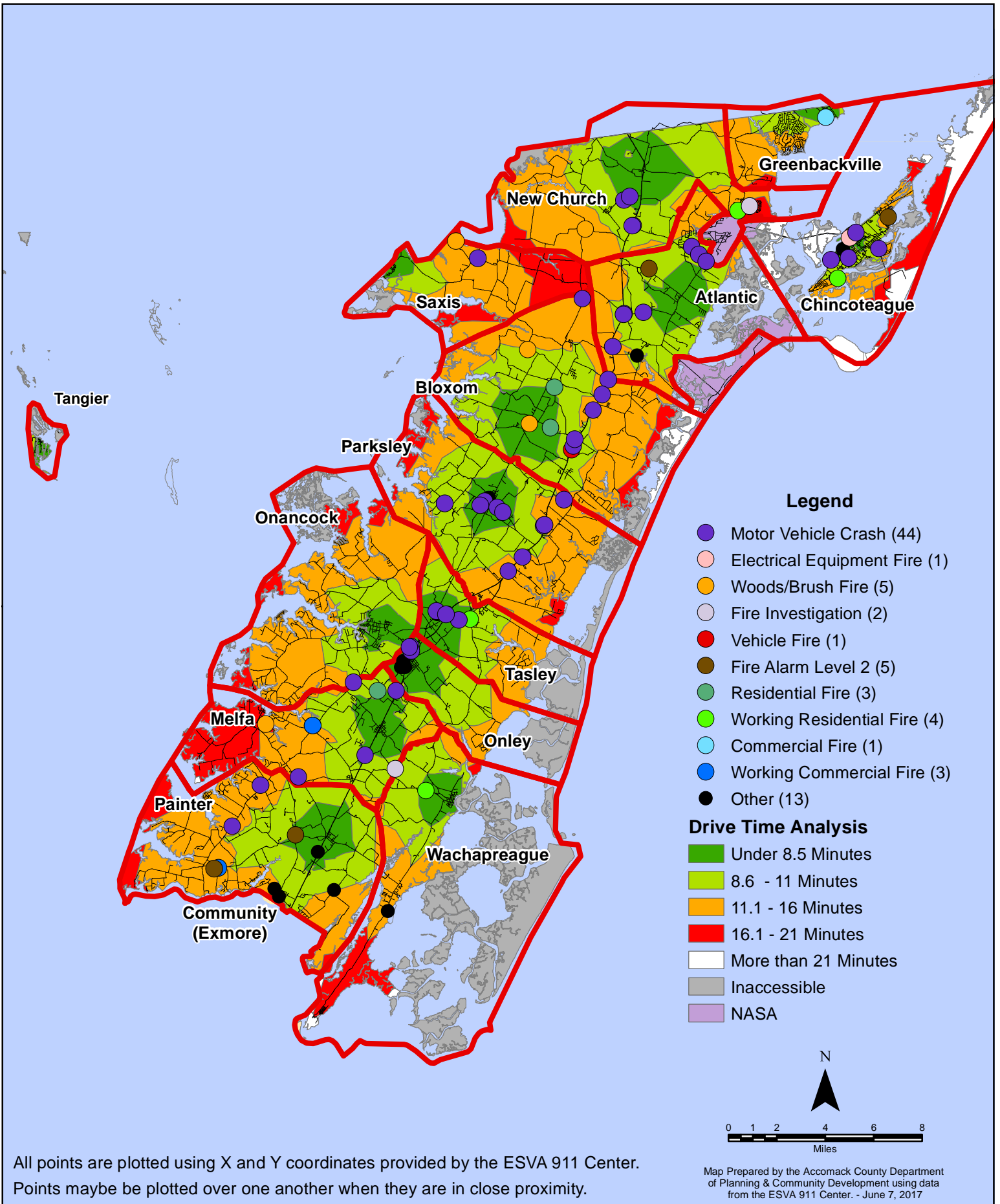
All points are plotted using X and Y coordinates provided by the ESVA 911 Center. Points may be plotted over one another when they are in close proximity.

Map Prepared by the Accomack County Department of Planning & Community Development using data from the ESVA 911 Center. - June 7, 2017

May 2017 Fire Calls By Response Time



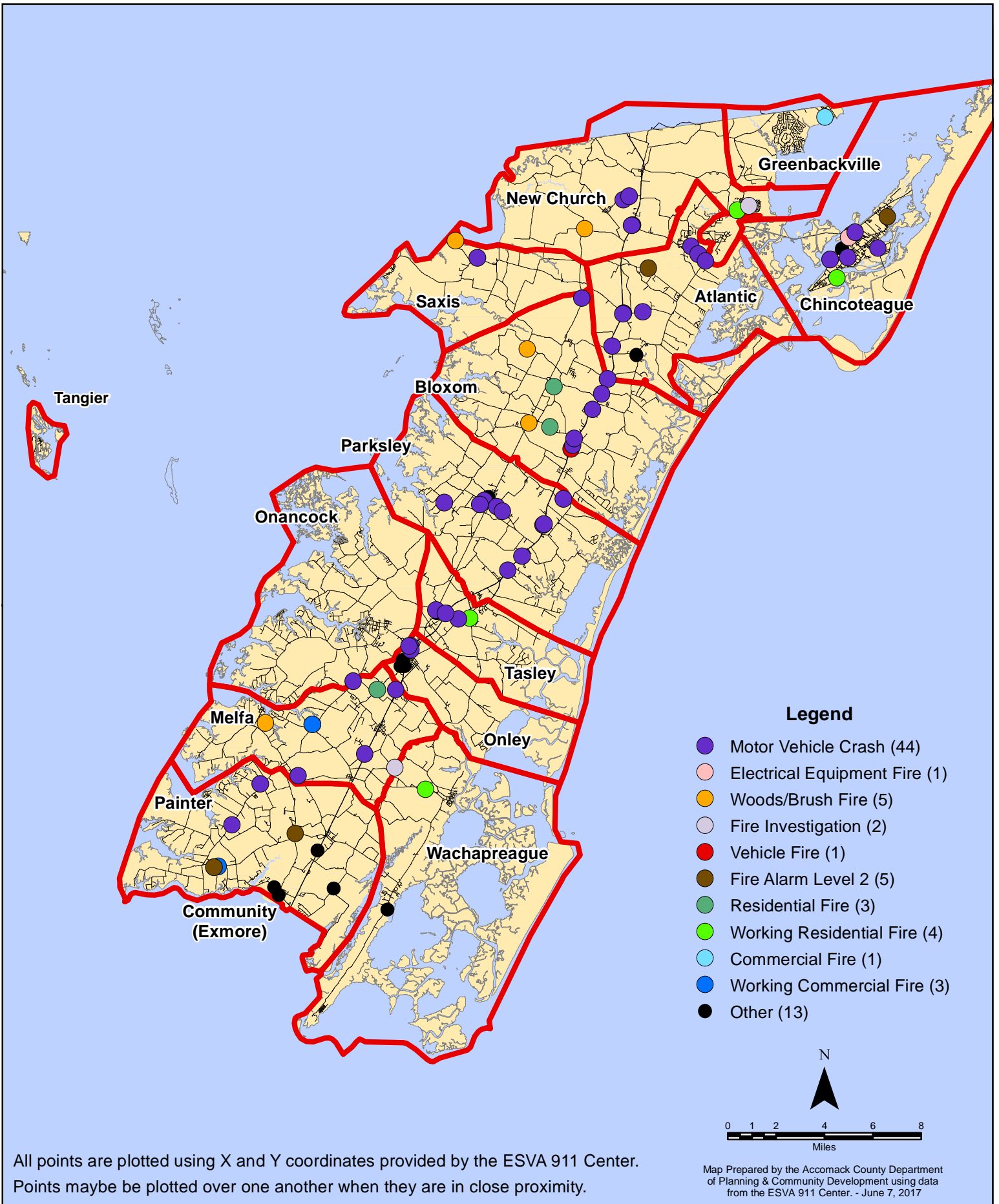
May 2017 Fire Calls By Type



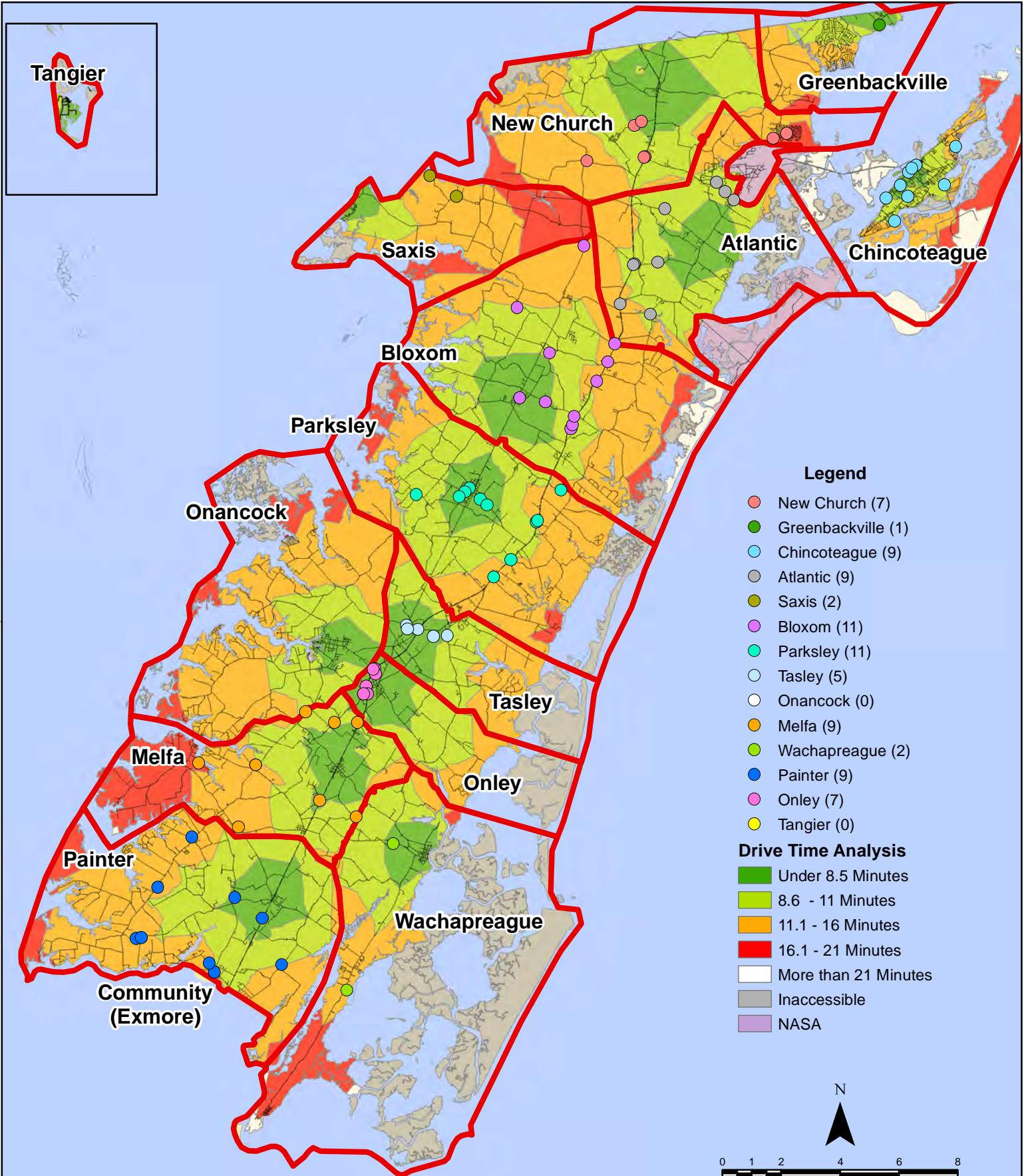
All points are plotted using X and Y coordinates provided by the ESVA 911 Center. Points may be plotted over one another when they are in close proximity.

Map Prepared by the Accomack County Department of Planning & Community Development using data from the ESVA 911 Center. - June 7, 2017

May 2017 Fire Calls By Type



May 2017 Fire Calls By District



All points are plotted using X and Y coordinates provided by the ESVA 911 Center. Points may be plotted over one another when they are in close proximity.

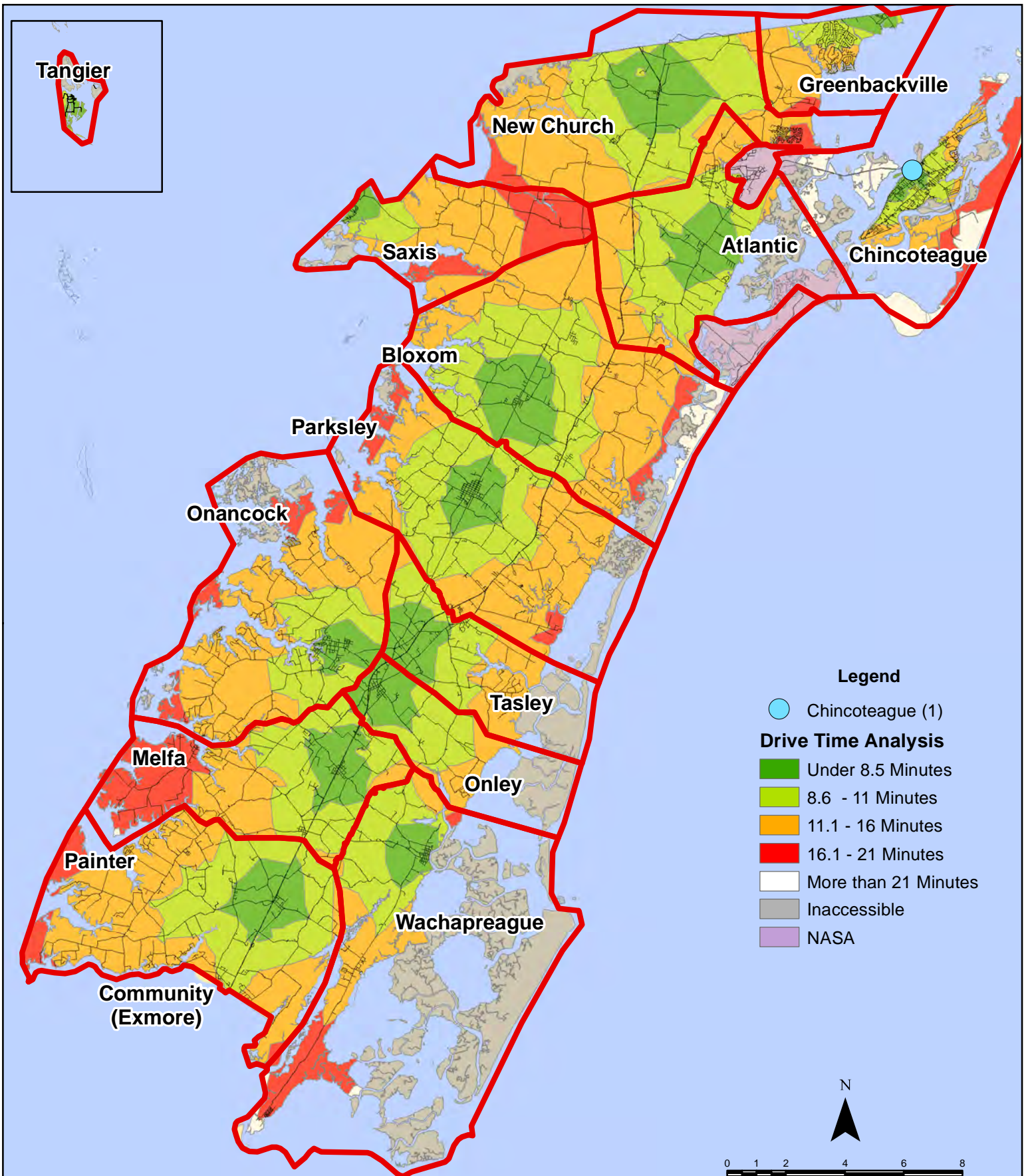
May 2017 Fire Calls By District



All points are plotted using X and Y coordinates provided by the ESVA 911 Center. Points may be plotted over one another when they are in close proximity.

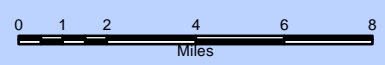
Map Prepared by the Accomack County Department of Planning & Community Development using data from the ESVA 911 Center. - June 7, 2017

May 2017 Fire Calls With Response Time Greater Than 20 Mins.



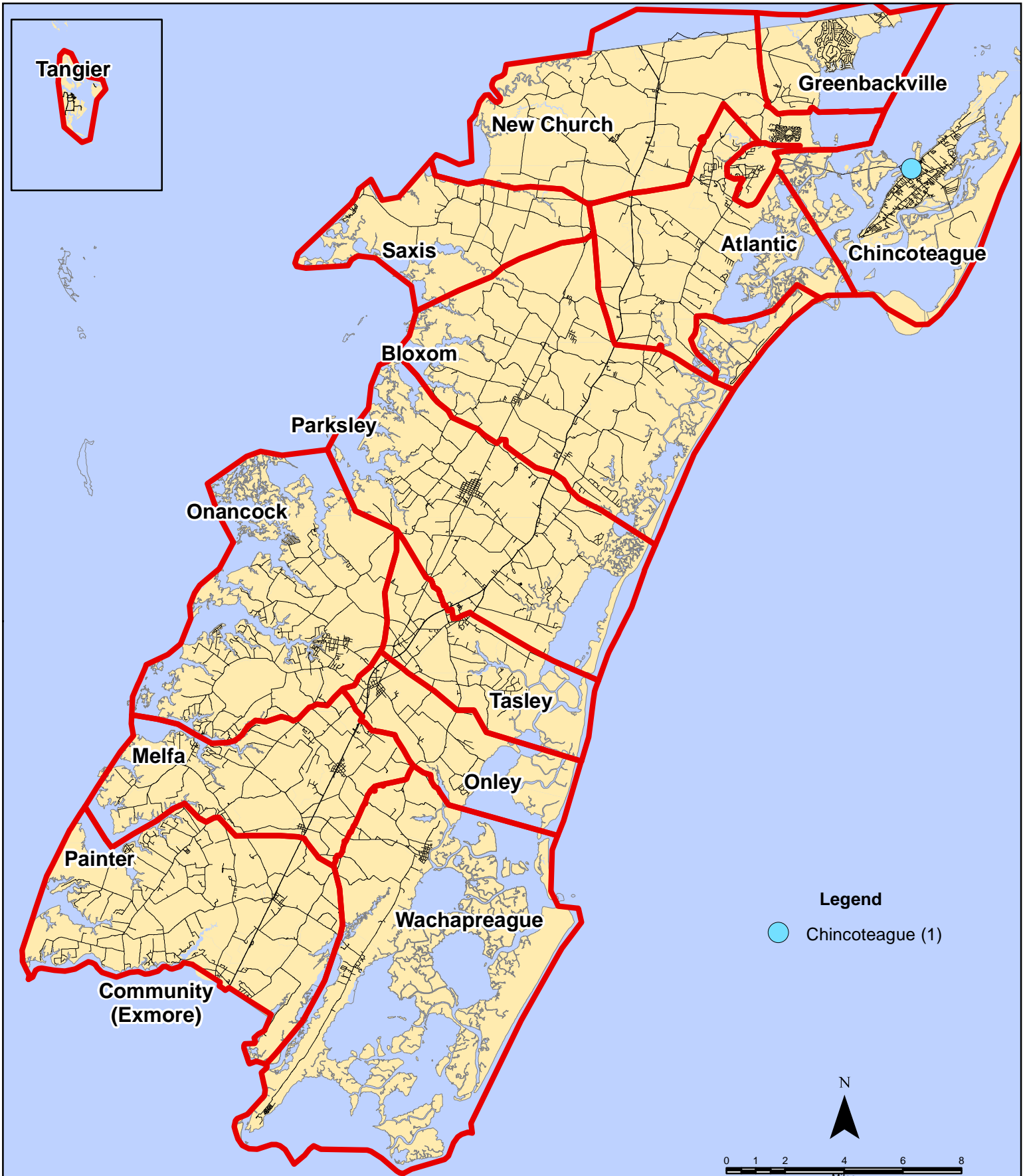
Legend

- Chincoteague (1)
- Drive Time Analysis**
- Under 8.5 Minutes
- 8.6 - 11 Minutes
- 11.1 - 16 Minutes
- 16.1 - 21 Minutes
- More than 21 Minutes
- Inaccessible
- NASA



All points are plotted using X and Y coordinates provided by the ESVA 911 Center. Points may be plotted over one another when they are in close proximity.

May 2017 Fire Calls With Response Time Greater Than 20 Mins.



All points are plotted using X and Y coordinates provided by the ESVA 911 Center. Points may be plotted over one another when they are in close proximity.

Map Prepared by the Accomack County Department of Planning & Community Development using data from the ESVA 911 Center. - June 7, 2017