

March 2018

Fire - Performance Measure Data *					
Response District	Total Calls in District	Greater than 20 min. Response Time	Calls Handled by other agency	Longest Response Time	Overall Station Benchmark %
New Church	6	0	0	0:10:24	100.0%
Greenbackville	5	2	0	0:38:12	60.0%
Chincoteague	5	1	1	0:28:26	80.0%
Atlantic	7	0	0	0:14:20	100.0%
Saxis	8	1	0	0:20:48	87.5%
Bloxom	6	2	1	0:26:08	66.7%
Parksley	17	0	0	0:16:42	100.0%
Tasley	7	0	0	0:16:19	100.0%
Onancock	8	0	0	0:14:11	100.0%
Melfa	14	1	1	0:13:06	92.9%
Wachapreague	7	0	1	0:18:10	100.0%
Painter	11	2	1	0:20:42	81.8%
Tangier	0	0	0	0	#DIV/0!
System Totals	101	9	5	0:38:12	91.1%

EMS - Performance Measure Data						
Response District	Total Calls in District	Greater than 20 min. Response Time	Longest Response Time	Calls Handled by other agency	Station Benchmark Compliance %	Overall Station Reliability %
Greenbackville	9	0	0:18:13	5	100.0%	44.4%
Chincoteague	63	1	0:20:38	5	98.4%	92.1%
Saxis	15	0	0:14:40	7	100.0%	53.3%
Bloxom	47	1	0:29:47	6	97.9%	87.2%
Parksley	81	0	0:16:49	3	100.0%	96.3%
Onancock	88	1	0:23:07	5	98.9%	94.3%
Melfa	49	1	0:20:19	2	98.0%	95.9%
Wachapreague (Painter)	44	1	0:27:07	4	97.7%	90.9%
Oak Hall	112	1	0:21:40	17	99.1%	84.8%
Tangier	17	0	0:13:04	0	100.0%	100.0%
Community (Exmore)	18	0	0:15:27	4	100.0%	77.8%
System Totals	543	6	0:29:47	58	98.9%	89.3%

	Station Giving Aid														
	Greenbackville	Chincoteague	Saxis	Bloxom	Parksley	Onancock	Melfa	Wachapreague/Painter	Oak Hall	Community (Exmore)	Northampton	Wallops	NORS	2nd Call	3rd Call
Greenbackville									5					5	
Chincoteague									5					2	3
Saxis									7					7	
Bloxom					4				2					5	1
Parksley				1		2								2	1
Onancock							4		1				1	4	
Melfa						1		1					1	1	
Wachapreague (Painter)							3		1				4		
Oak Hall		11		5								1	5	12	
Community (Exmore)								4					4		
Northampton Co.															
Wallops															
Totals	0	11	0	6	4	3	7	5	19	2	0	1	29	27	2

Hospital Destination by Unit	Station Receiving Aid		
	Riverside - Shore Memorial	PRMC	Other
Greenbackville			2
Chincoteague	12	29	
Saxis	5	1	
Bloxom	29	7	
Parksley	58	2	
Onancock	57		
Melfa	37		
Wachapreague (Painter)	29		
Oak Hall	44	30	1
Wallops	1		
Totals	272	71	1

Benchmark = The Accomack County Board of Supervisors established a 20 minute standard for emergency response.

NORS = No Response by station or the call was handled by another station or agency.

2nd Call = 2nd ambulance call received while first ambulance was on another call.

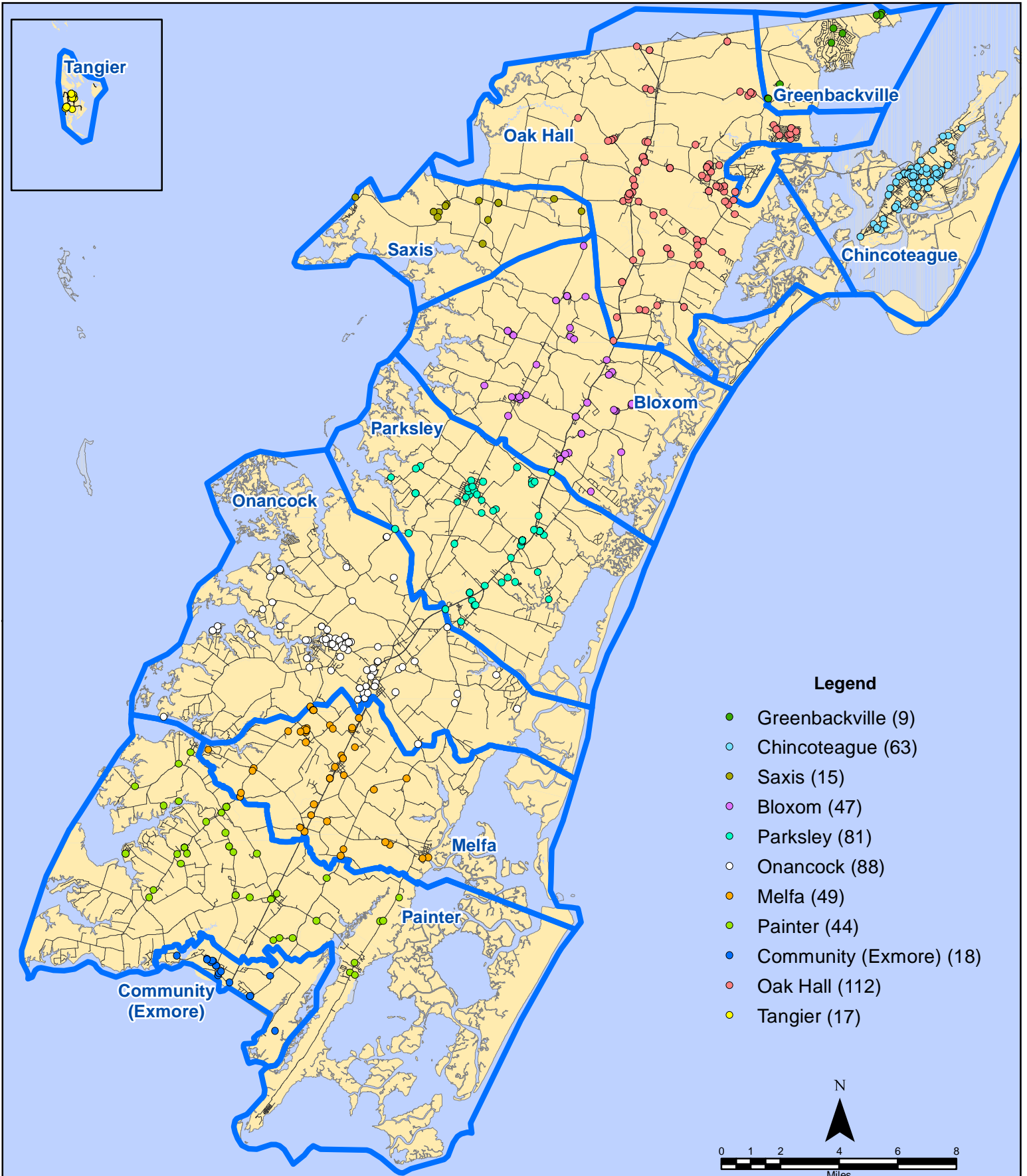
3rd Call = 3rd ambulance call received while first & second ambulances were on other calls.

* This data excludes F1 Med (Medical Assist) calls in the Fire Data.

This information was prepared using data supplied by the Eastern Shore of Virginia 911 Center. This information is original incident data only and may not be representative of all units and/or stations who responded to an incident.

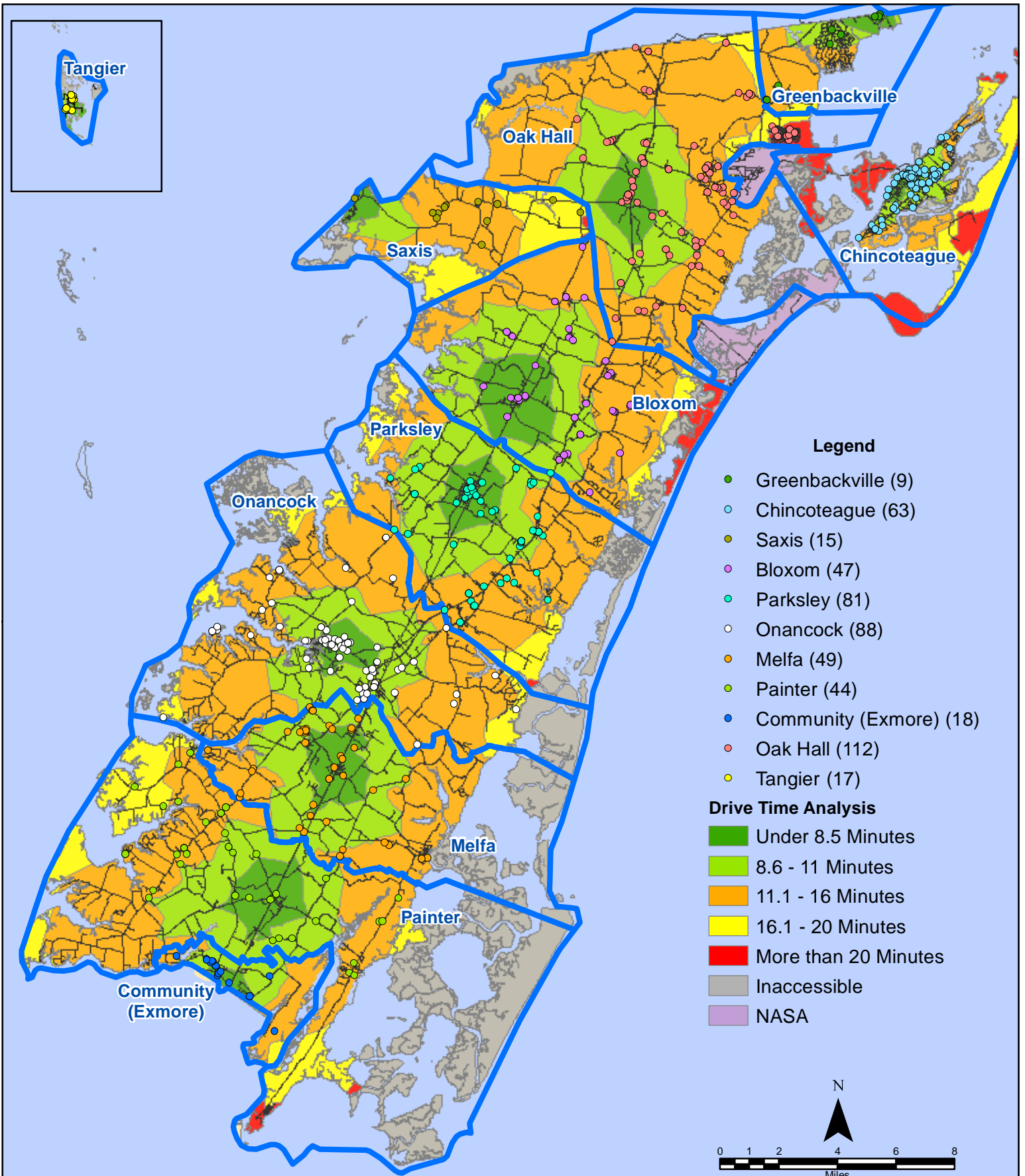
Station Receiving Aid

March 2018 EMS Calls By District

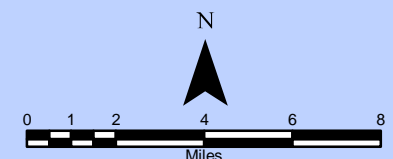


All points are plotted using X and Y coordinates provided by the ESVA 911 Center.
Points may be plotted over one another when they are in close proximity.

March 2018 EMS Calls By District

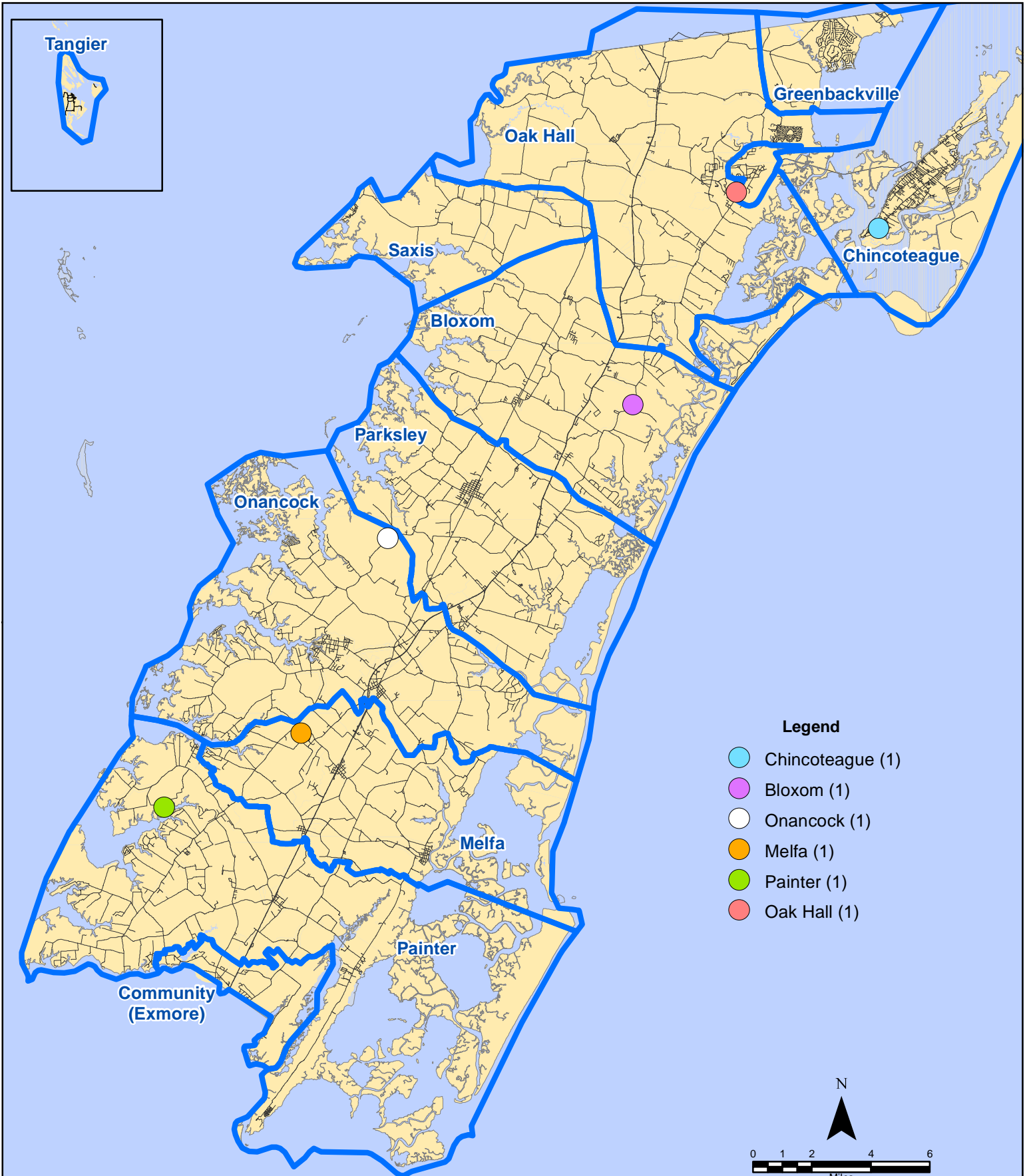


All points are plotted using X and Y coordinates provided by the ESVA 911 Center. Points may be plotted over one another when they are in close proximity.



Map Prepared by the Accomack County Department of Building, Planning & Economic Development using data from the ESVA 911 Center.- April 12, 2018

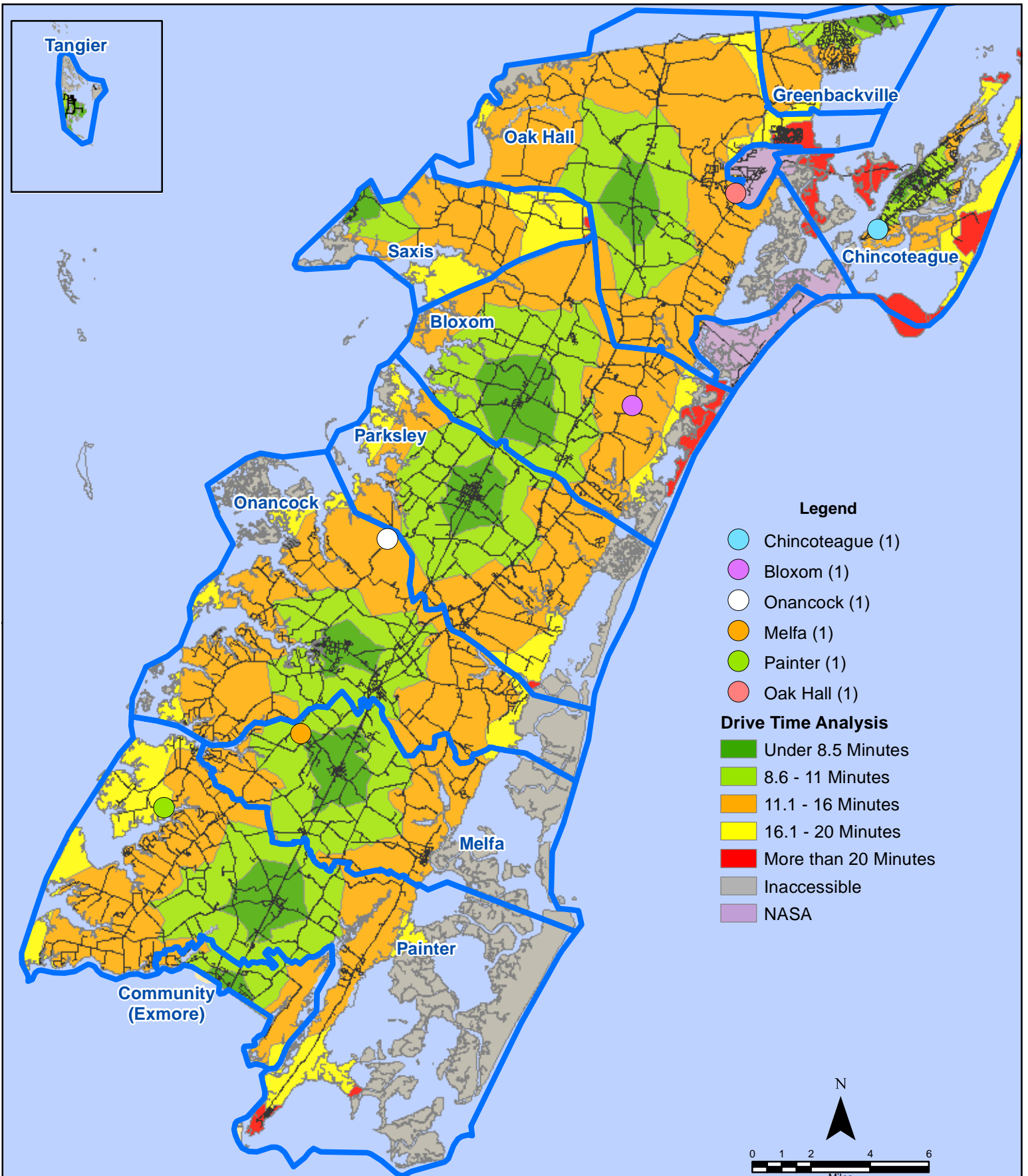
March 2018 EMS Calls With Response Time Greater Than 20 Mins.



All points are plotted using X and Y coordinates provided by the ESVA 911 Center. Points may be plotted over one another when they are in close proximity.

Map Prepared by the Accomack County Department of Building, Planning & Economic Development using data from the ESVA 911 Center.- March 6, 2018

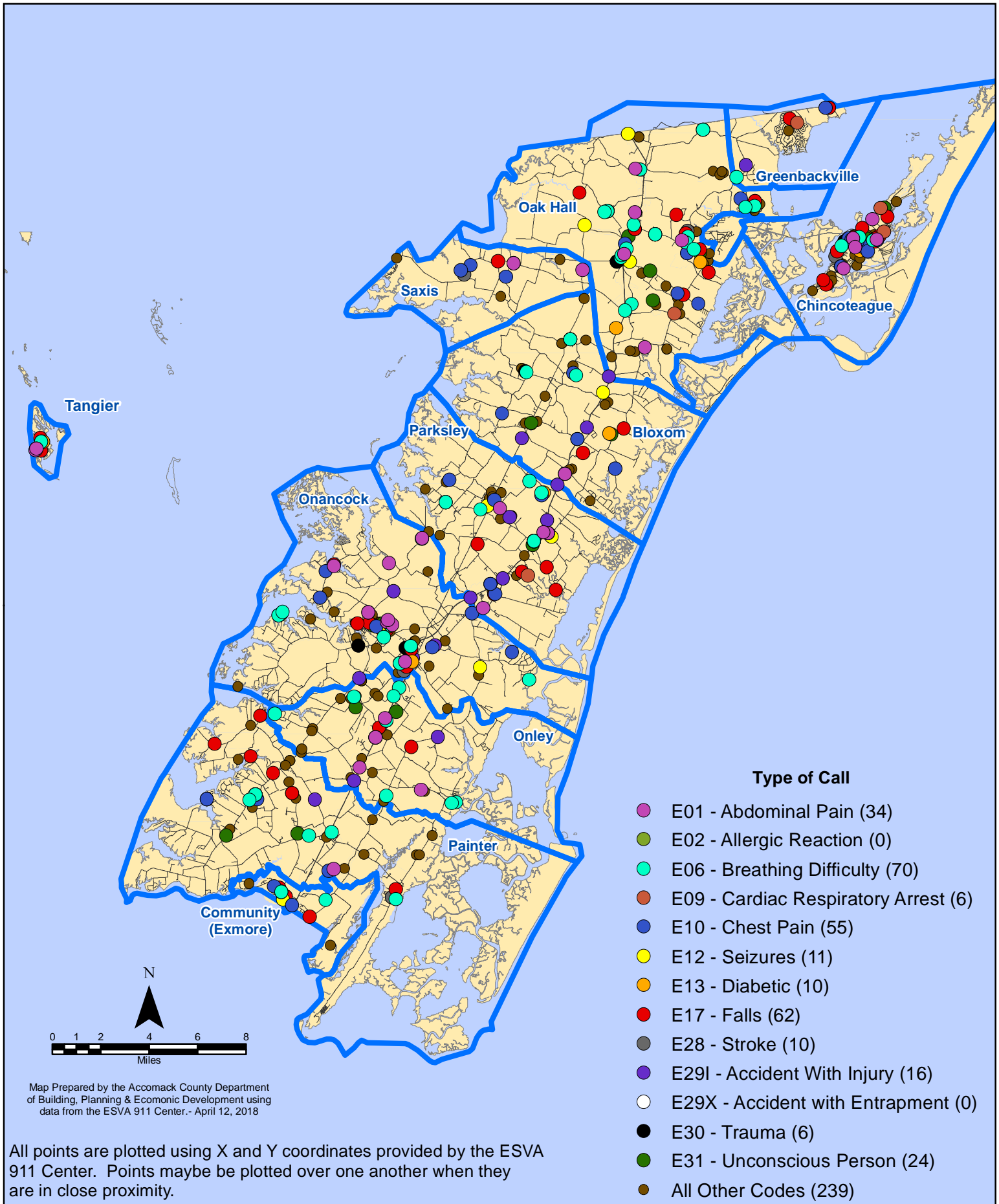
March 2018 EMS Calls With Response Time Greater Than 20 Mins.



All points are plotted using X and Y coordinates provided by the ESVA 911 Center. Points may be plotted over one another when they are in close proximity.

Map Prepared by the Accomack County Department of Building, Planning & Economic Development using data from the ESVA 911 Center.- March 6, 2018

March 2018 EMS Calls By Type



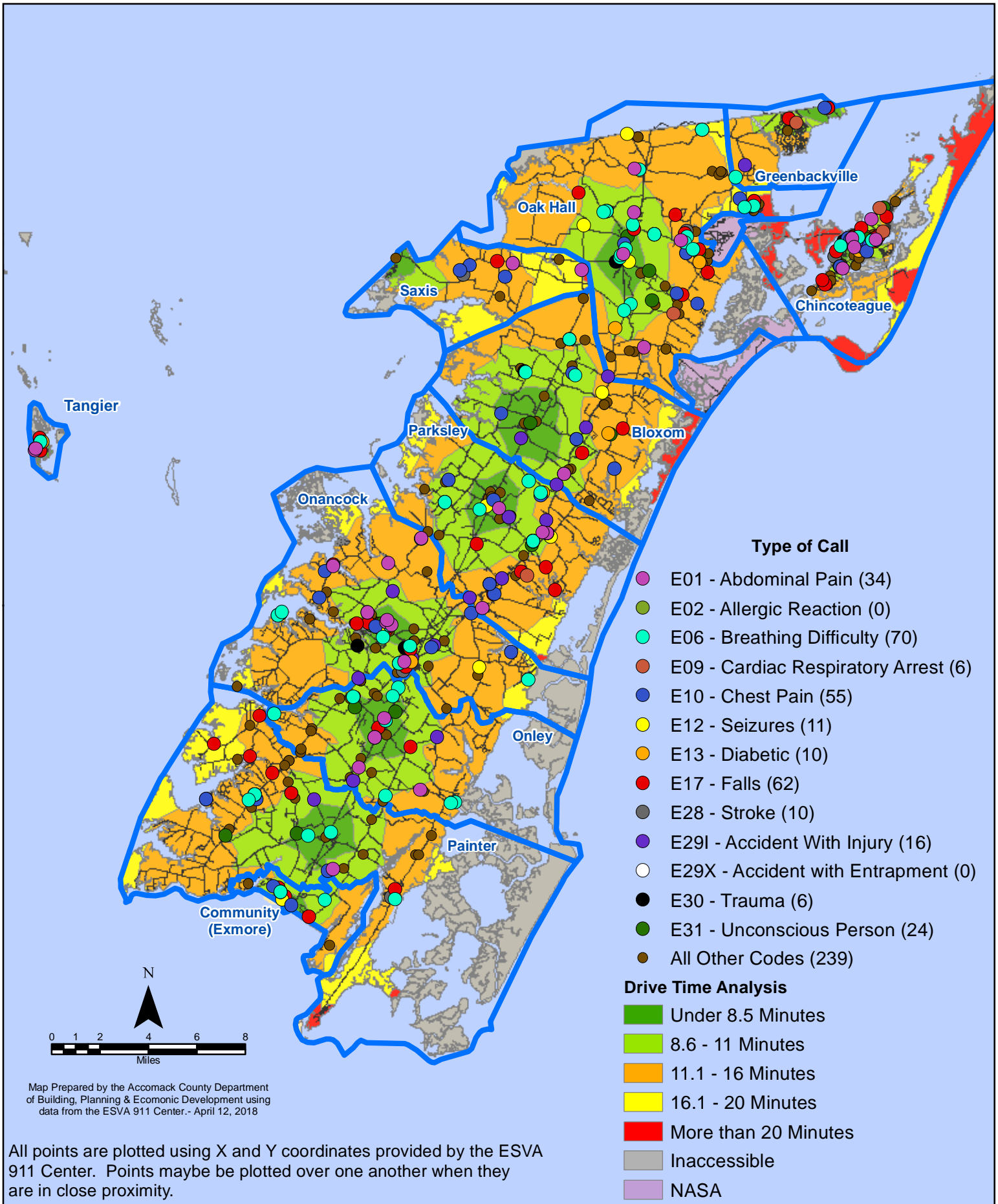
Type of Call

- E01 - Abdominal Pain (34)
- E02 - Allergic Reaction (0)
- E06 - Breathing Difficulty (70)
- E09 - Cardiac Respiratory Arrest (6)
- E10 - Chest Pain (55)
- E12 - Seizures (11)
- E13 - Diabetic (10)
- E17 - Falls (62)
- E28 - Stroke (10)
- E29I - Accident With Injury (16)
- E29X - Accident with Entrapment (0)
- E30 - Trauma (6)
- E31 - Unconscious Person (24)
- All Other Codes (239)

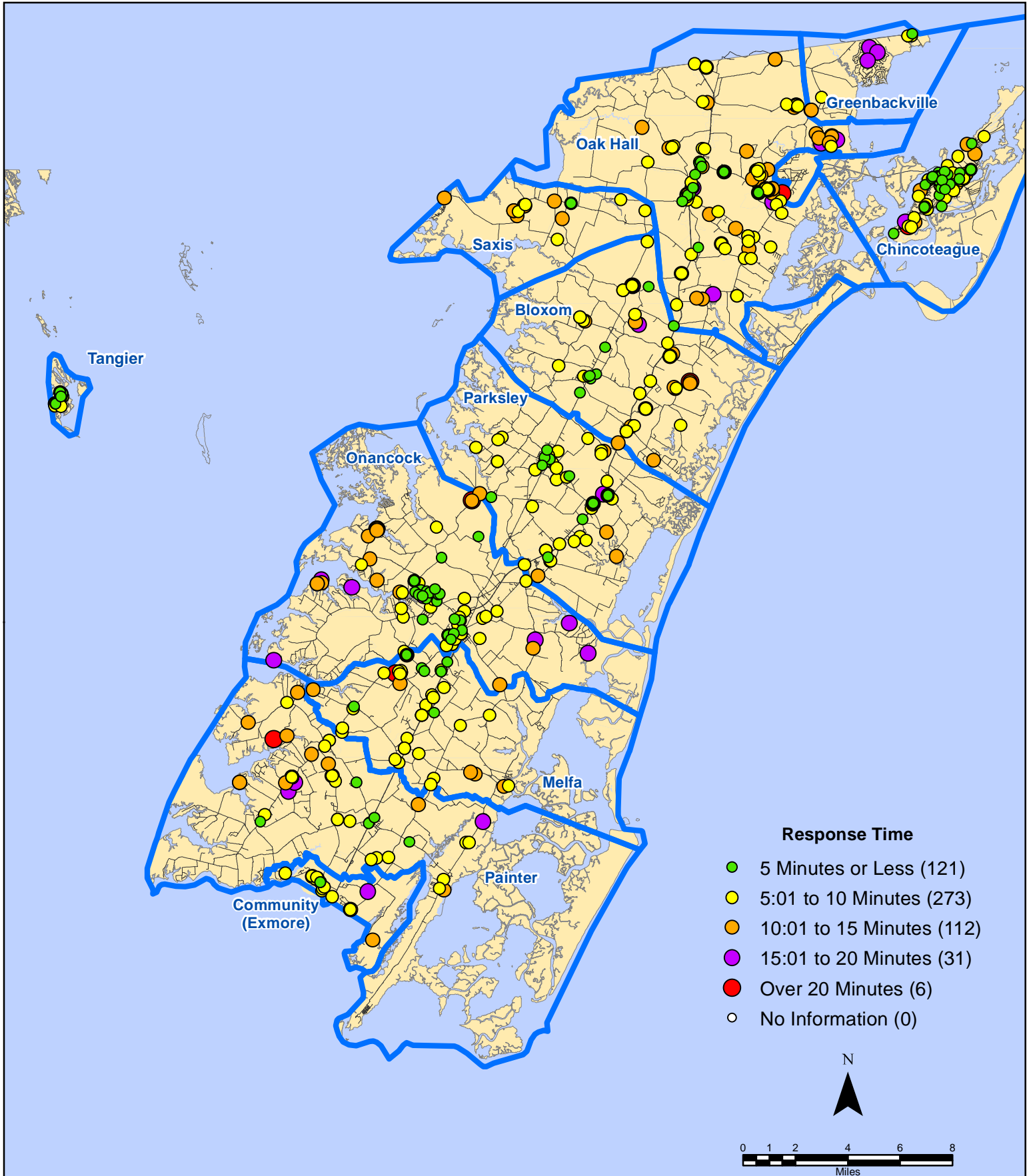
Map Prepared by the Accomack County Department of Building, Planning & Economic Development using data from the ESVA 911 Center - April 12, 2018

All points are plotted using X and Y coordinates provided by the ESVA 911 Center. Points may be plotted over one another when they are in close proximity.

March 2018 EMS Calls By Type



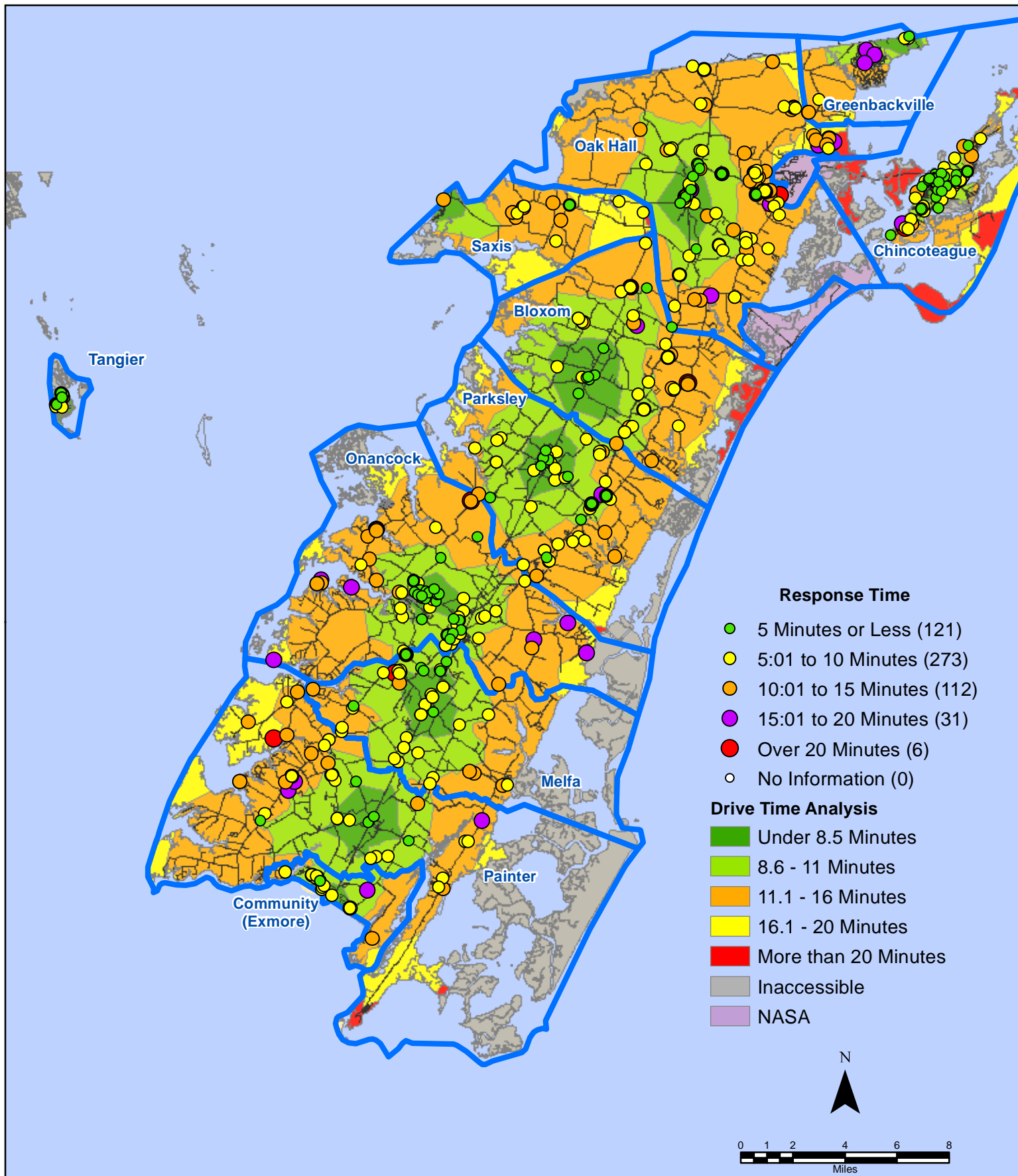
March 2018 EMS Calls By Response Time



All points are plotted using X and Y coordinates provided by the ESVA 911 Center.
Points may be plotted over one another when they are in close proximity.

Map Prepared by the Accomack County Department of Building, Planning & Economic Development using data from the ESVA 911 Center.- April 12, 2018

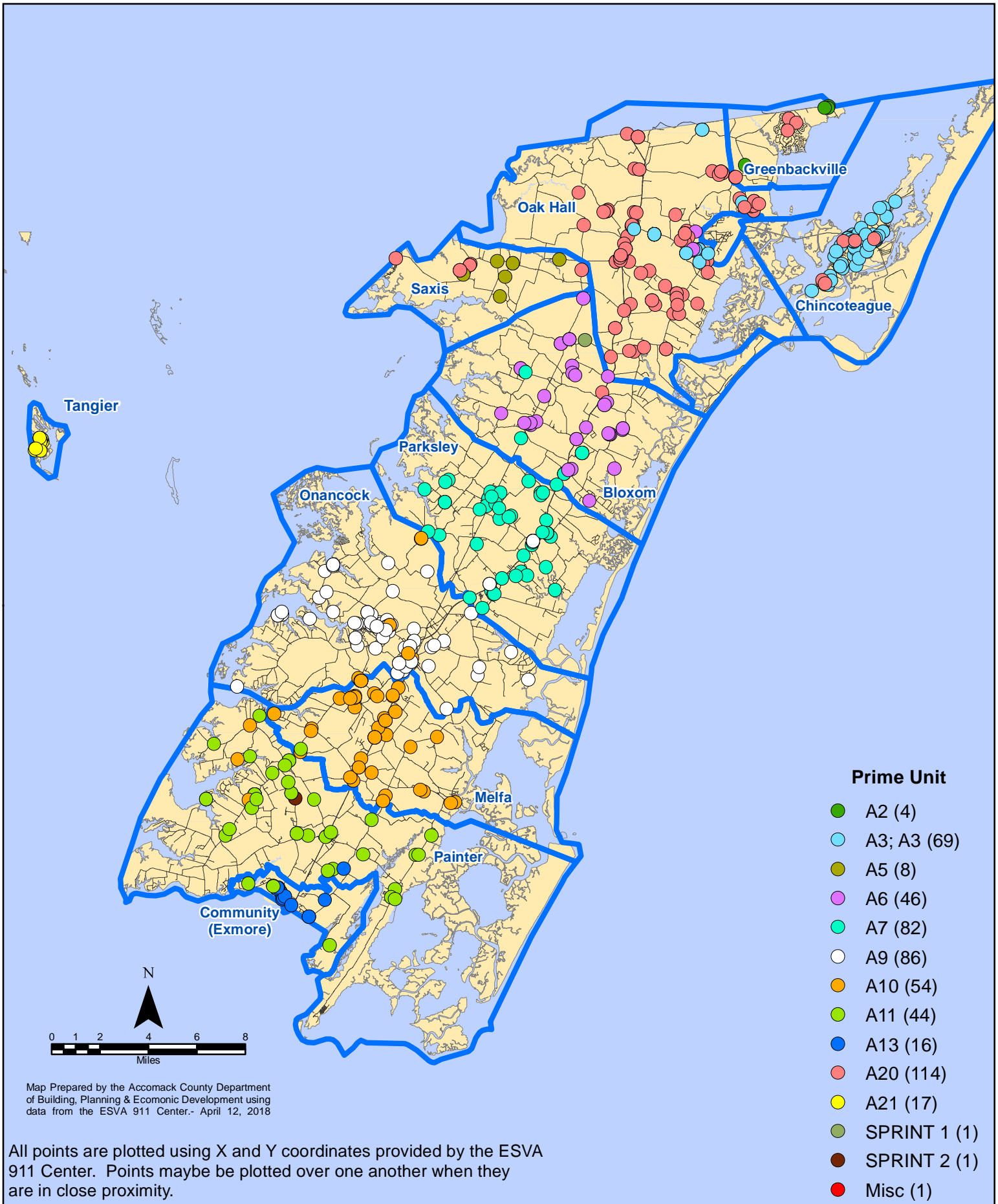
March 2018 EMS Calls By Response Time



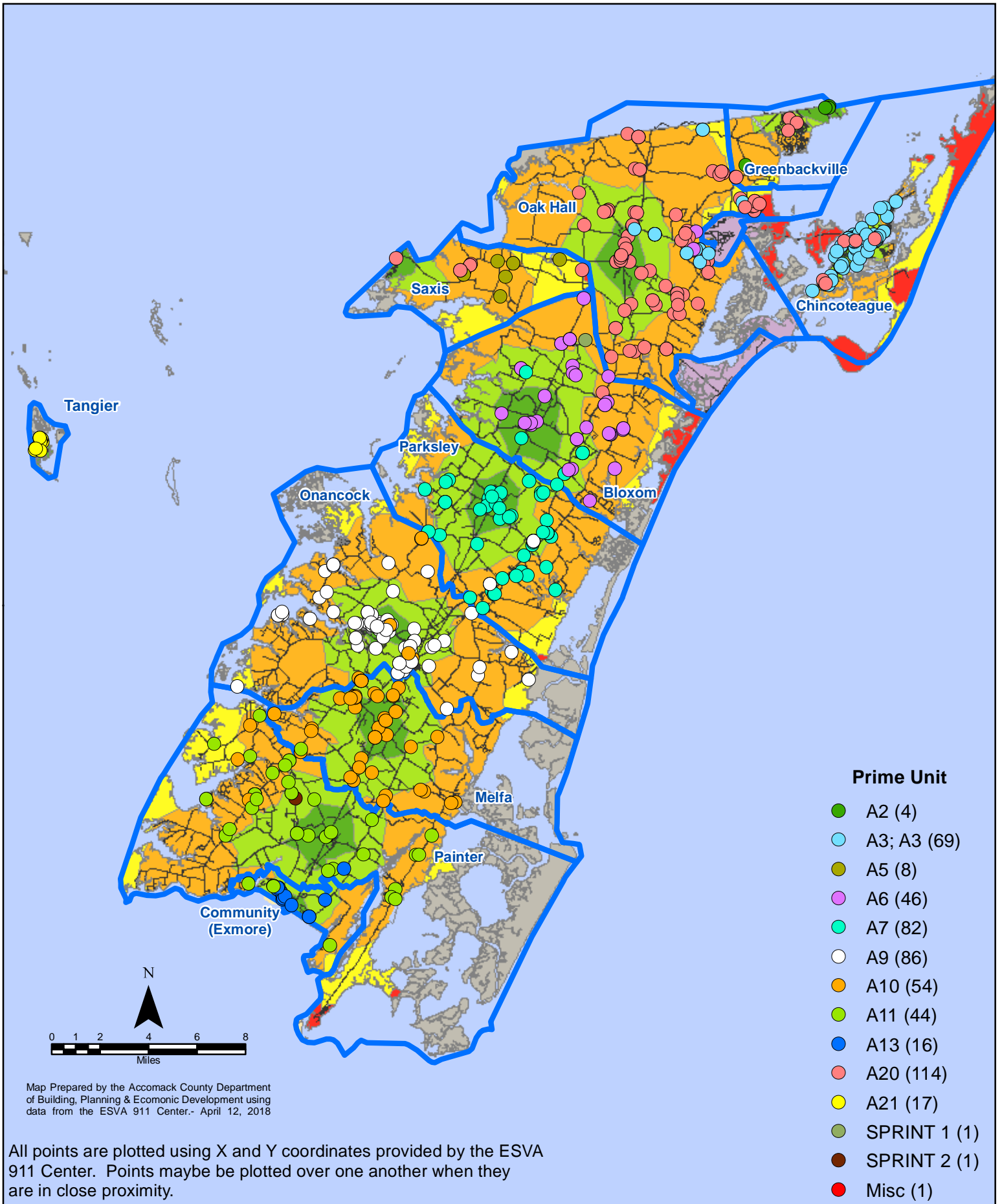
All points are plotted using X and Y coordinates provided by the ESVA 911 Center. Points may be plotted over one another when they are in close proximity.

Map Prepared by the Accomack County Department of Building, Planning & Economic Development using data from the ESVA 911 Center.- April 12, 2018

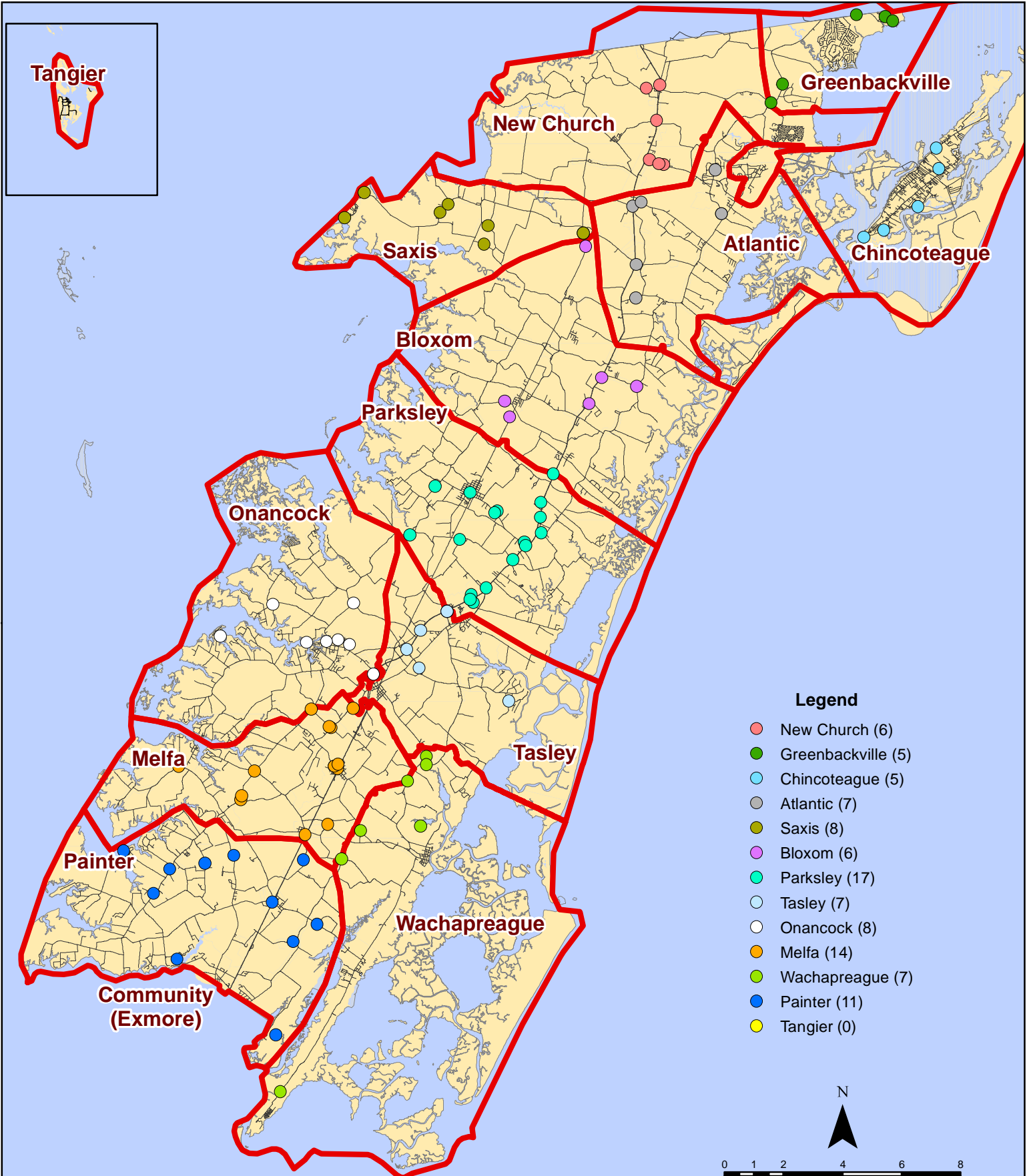
March 2018 EMS Calls By Prime Unit



March 2018 EMS Calls By Prime Unit



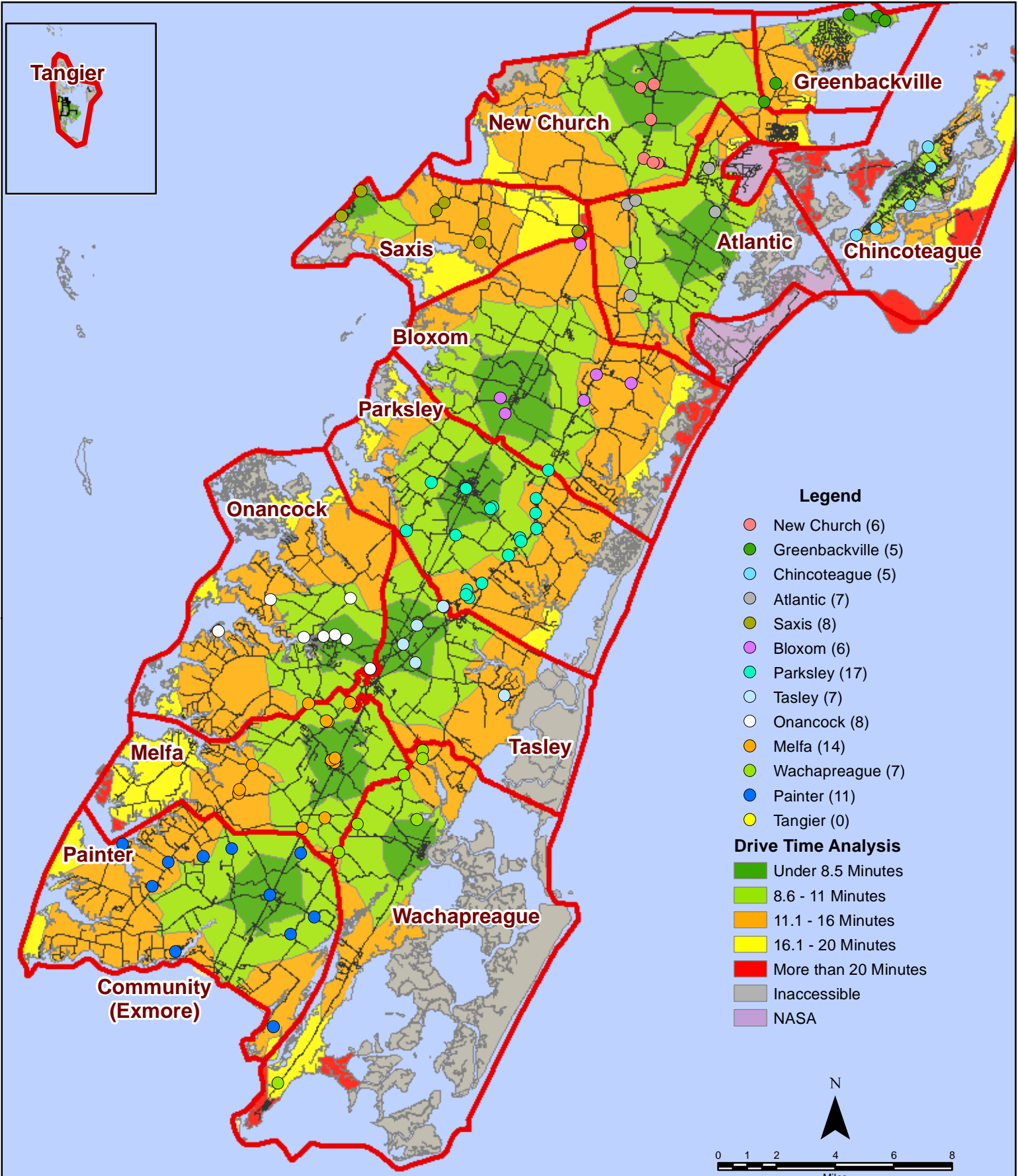
March 2018 Fire Calls By District



All points are plotted using X and Y coordinates provided by the ESVA 911 Center. Points may be plotted over one another when they are in close proximity.

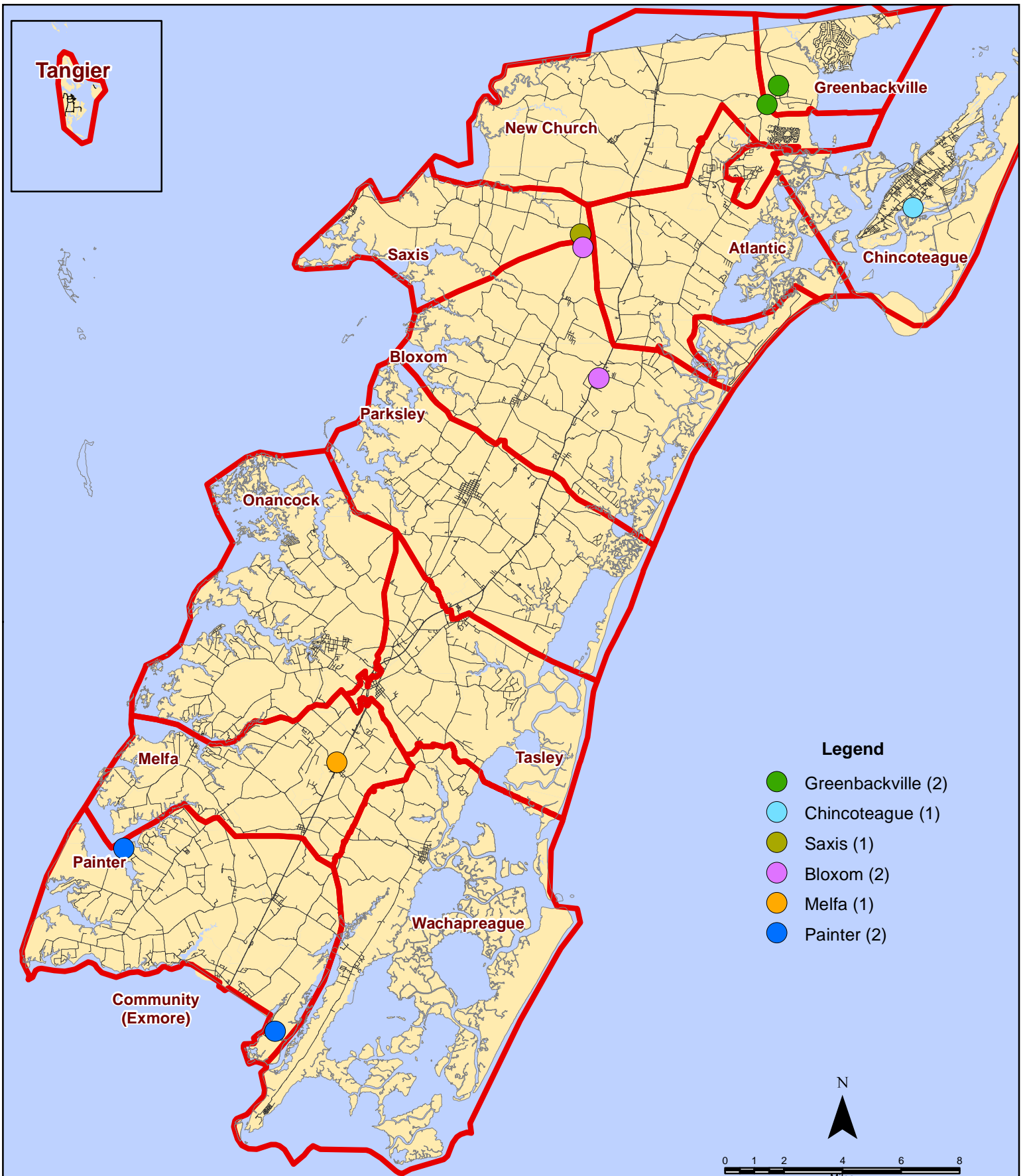
Map Prepared by the Accomack County Department of Building, Planning & Economic Development using data from the ESVA 911 Center.- April 12, 2018

March 2018 Fire Calls By District



All points are plotted using X and Y coordinates provided by the ESVA 911 Center. Points may be plotted over one another when they are in close proximity.

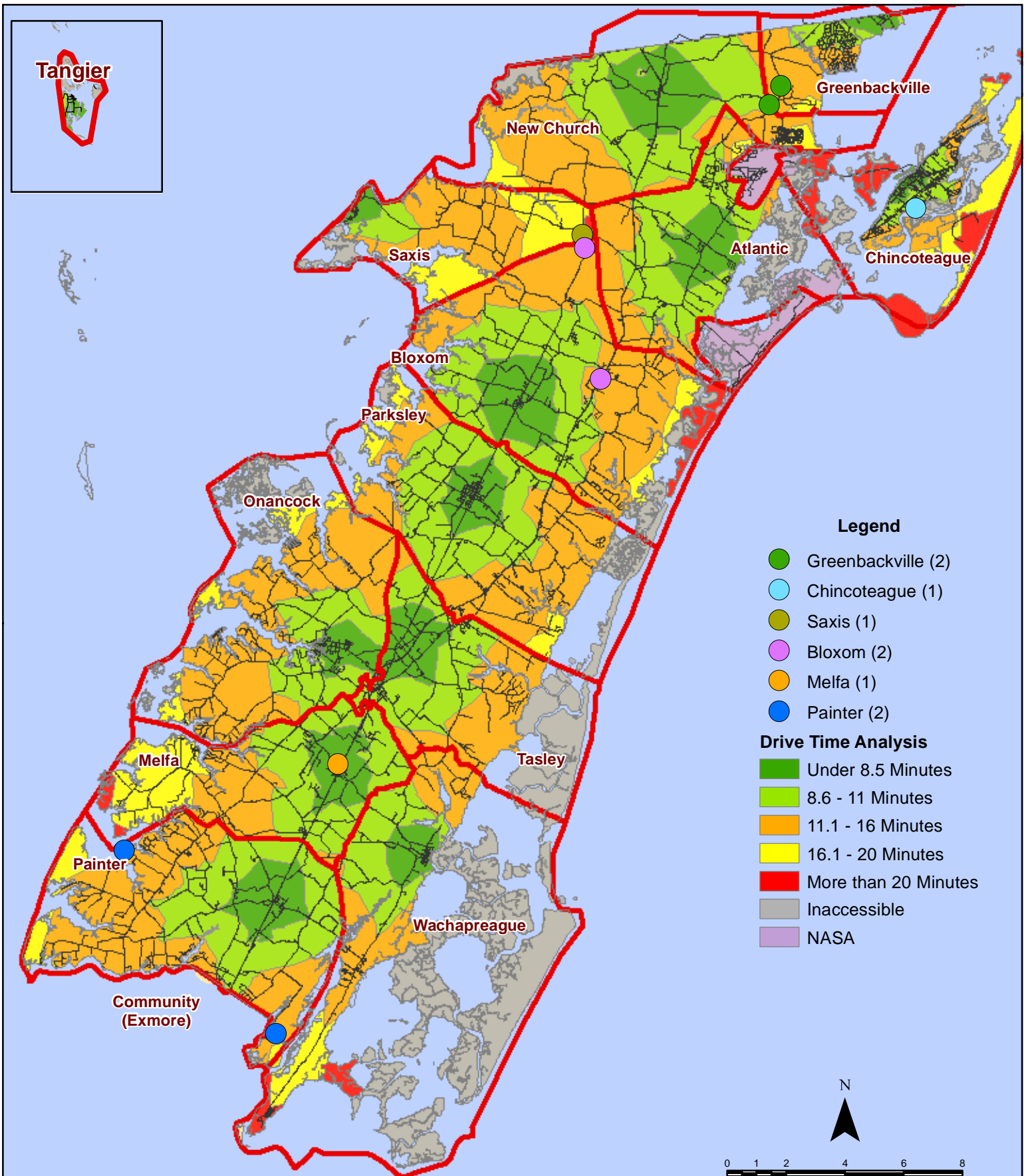
March 2018 Fire Calls With Response Time Greater Than 20 Mins.



All points are plotted using X and Y coordinates provided by the ESVA 911 Center. Points may be plotted over one another when they are in close proximity.

Map Prepared by the Accomack County Department of Building, Planning & Economic Development using data from the ESVA 911 Center.- April 12, 2018

March 2018 Fire Calls With Response Time Greater Than 20 Mins.

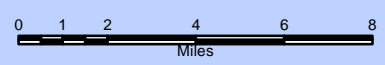


Legend

- Greenbackville (2)
- Chincoteague (1)
- Saxis (1)
- Bloxom (2)
- Melfa (1)
- Painter (2)

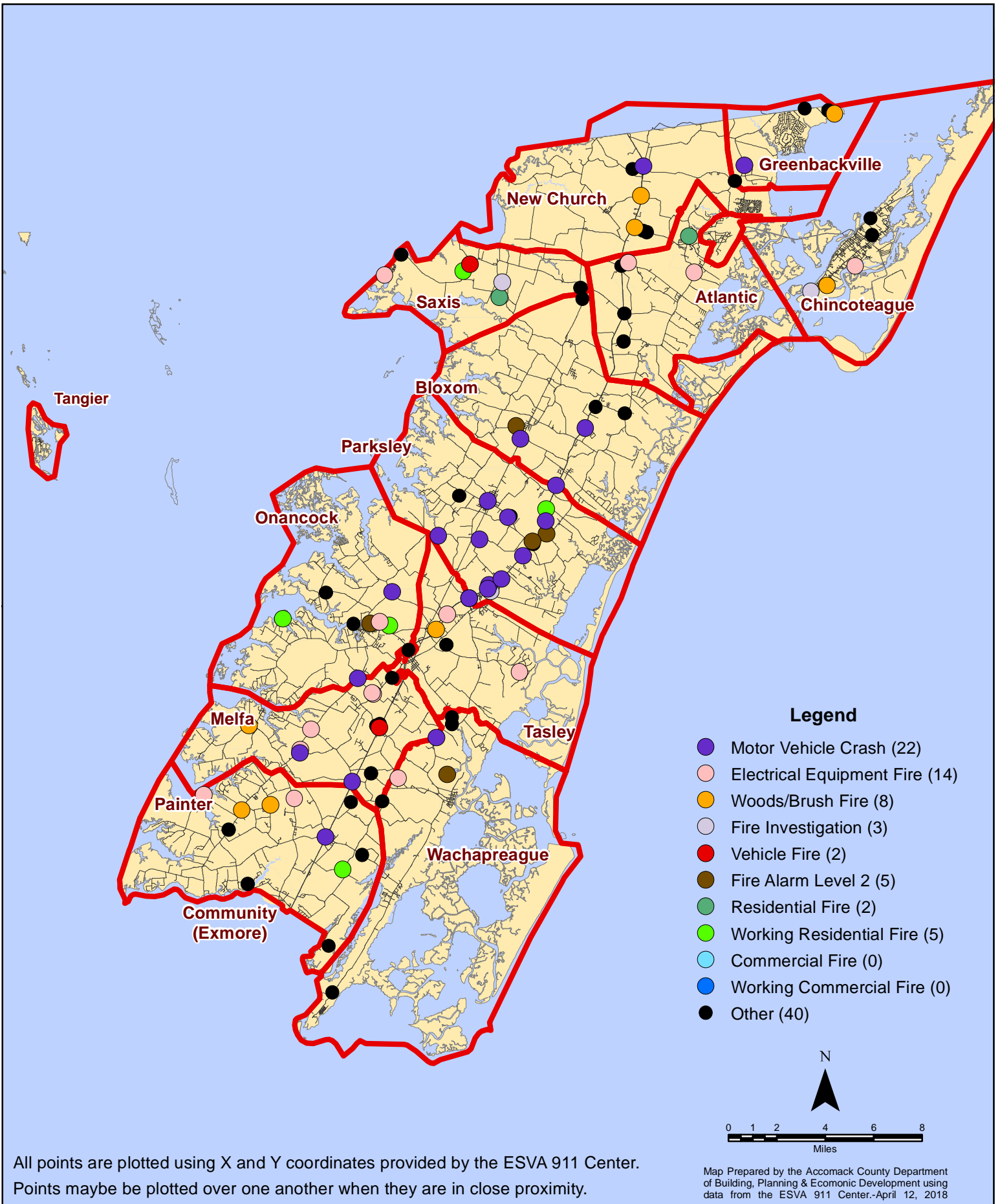
Drive Time Analysis

- Under 8.5 Minutes
- 8.6 - 11 Minutes
- 11.1 - 16 Minutes
- 16.1 - 20 Minutes
- More than 20 Minutes
- Inaccessible
- NASA

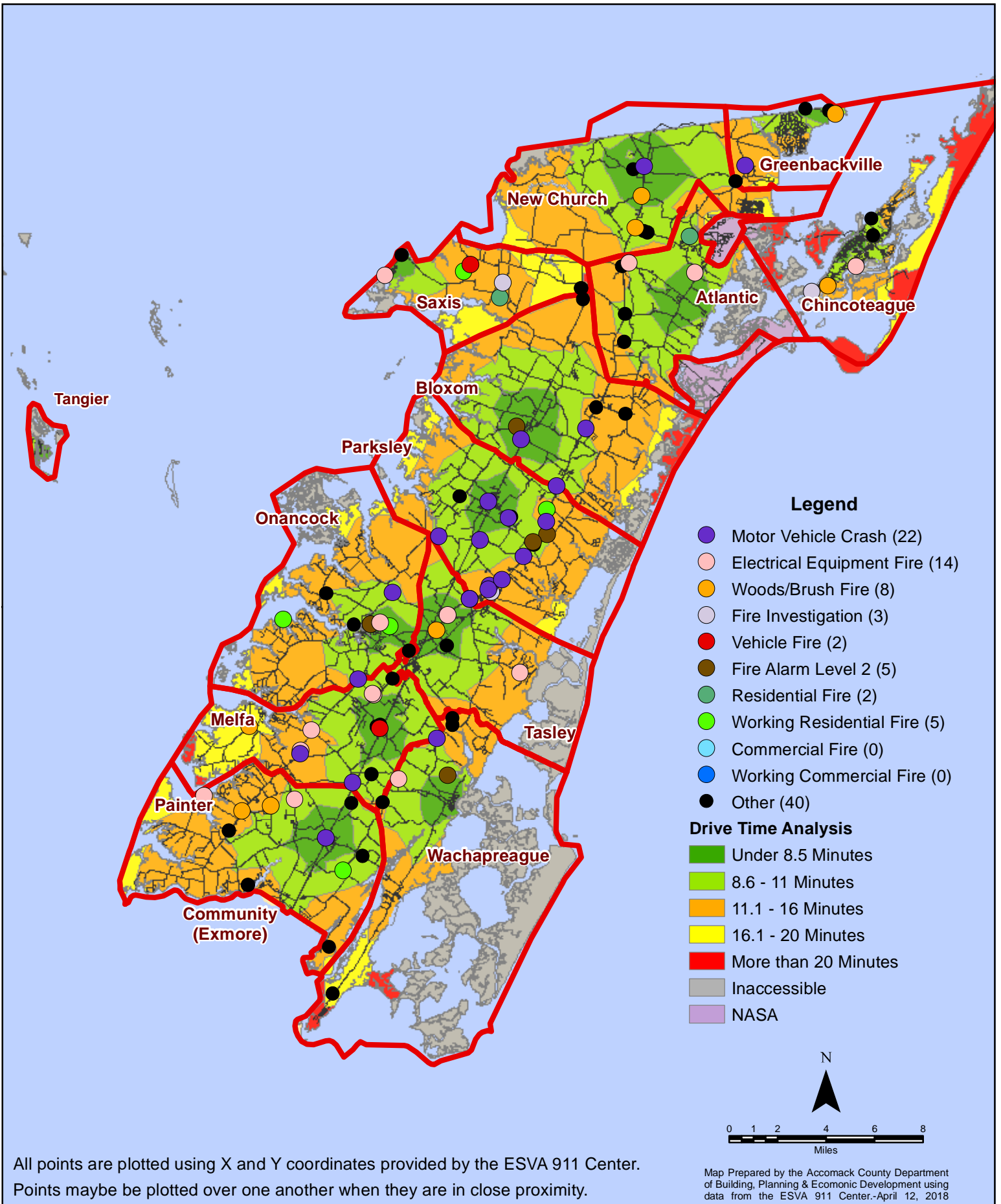


All points are plotted using X and Y coordinates provided by the ESVA 911 Center. Points may be plotted over one another when they are in close proximity.

March 2018 Fire Calls By Type



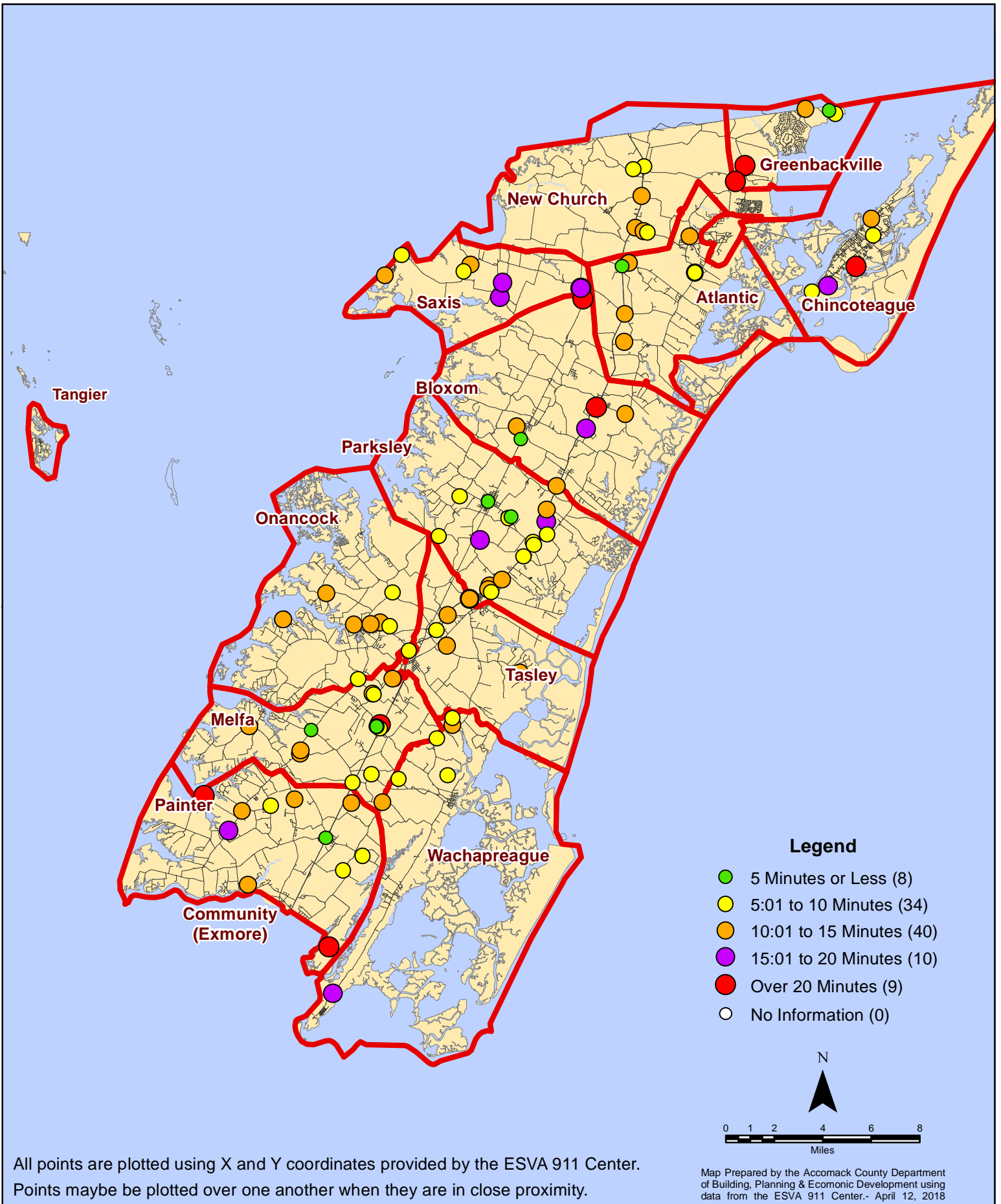
March 2018 Fire Calls By Type



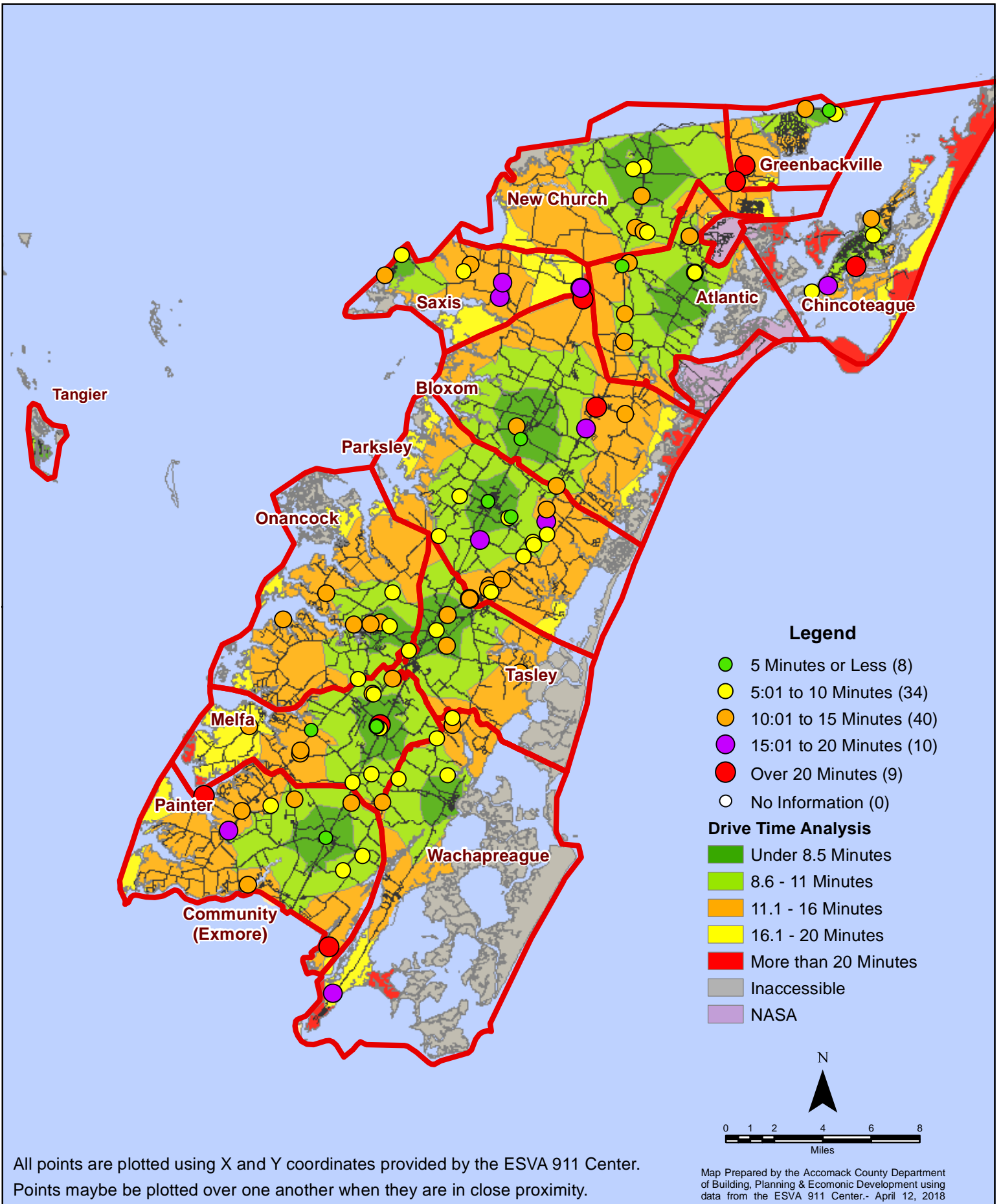
All points are plotted using X and Y coordinates provided by the ESVA 911 Center. Points may be plotted over one another when they are in close proximity.

Map Prepared by the Accomack County Department of Building, Planning & Economic Development using data from the ESVA 911 Center.-April 12, 2018

March 2018 Fire Calls By Response Time



March 2018 Fire Calls By Response Time



All points are plotted using X and Y coordinates provided by the ESVA 911 Center. Points may be plotted over one another when they are in close proximity.

Map Prepared by the Accomack County Department of Building, Planning & Economic Development using data from the ESVA 911 Center.- April 12, 2018