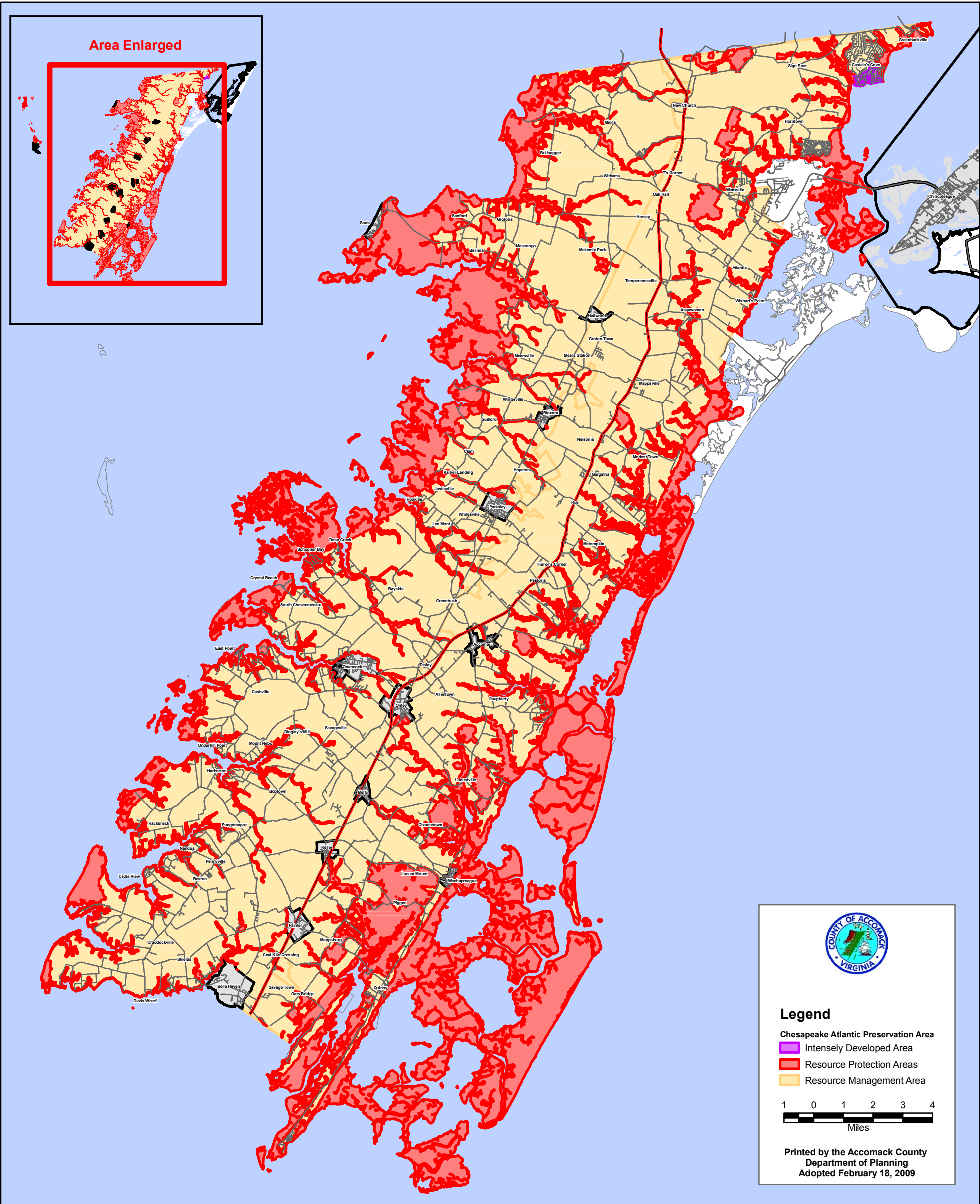



Accomack County Chesapeake/Atlantic Preservation Area




Area Enlarged



Legend

- Intensely Developed Area
- Resource Protection Areas
- Resource Management Area

1 0 1 2 3 4

Miles

Printed by the Accomack County
Department of Planning
Adopted February 18, 2009

Chesapeake / Atlantic Preservation Area Intensely Developed Area

