

# May 2018

Fire - Performance Measure Data *					
Response District	Total Calls in District	Greater than 20 min. Response Time	Calls Handled by other agency	Longest Response Time	Overall Station Benchmark %
New Church	8	1	1	0:27:00	87.5%
Greenbackville	1	0	0	0:13:12	100.0%
Chincoteague	6	0	0	0:11:33	100.0%
Atlantic	4	0	0	0:14:32	100.0%
Saxis	1	0	0	0:06:41	100.0%
Bloxom	9	0	0	0:17:05	100.0%
Parksley	13	0	1	0:14:26	100.0%
Tasley	9	0	2	0:12:47	100.0%
Onancock	8	0	0	0:18:15	100.0%
Melfa	3	0	0	0:10:54	100.0%
Wachapreague	3	0	0	0:17:42	100.0%
Painter	4	0	0	0:11:50	100.0%
Tangier	1	0	0	0:06:46	100.0%
<b>System Totals</b>	<b>70</b>	<b>1</b>	<b>4</b>	<b>0:27:00</b>	<b>98.6%</b>

EMS - Performance Measure Data						
Response District	Total Calls in District	Greater than 20 min. Response Time	Longest Response Time	Calls Handled by other agency	Station Benchmark Compliance %	Overall Station Reliability %
Greenbackville	5	0	0:14:14	2	100.0%	60.0%
Chincoteague	71	1	0:23:35	5	98.6%	93.0%
Saxis	7	0	0:12:10	0	100.0%	100.0%
Bloxom	44	0	0:15:02	4	100.0%	90.9%
Parksley	102	0	0:18:19	10	100.0%	90.2%
Onancock	107	1	0:23:41	2	99.1%	98.1%
Melfa	52	0	0:16:54	4	100.0%	92.3%
Wachapreague (Painter)	25	0	0:17:48	1	100.0%	96.0%
Oak Hall	80	3	0:29:19	6	96.3%	92.5%
Tangier	19	0	0:17:08	0	100.0%	100.0%
Community (Exmore)	20	0	0:14:23	4	100.0%	80.0%
<b>System Totals</b>	<b>532</b>	<b>5</b>	<b>0:29:19</b>	<b>38</b>	<b>99.1%</b>	<b>92.9%</b>

EMS Mutual Aid Data															
	Station Giving Aid														
	Greenbackville	Chincoteague	Saxis	Bloxom	Parksley	Onancock	Melfa	Wachapreague/Painter	Oak Hall	Community (Exmore)	Northampton	Wallops	NORS	2nd Call	3rd Call
Greenbackville								2					2		
Chincoteague								5						4	1
Saxis															
Bloxom					2	1		1					2	2	
Parksley				5		5							1	8	1
Onancock				2										1	1
Melfa							4						3	1	
Wachapreague (Painter)									1					1	
Oak Hall	2	3		1										5	1
Community (Exmore)							4						4		
Northampton Co.															
Wallops															
<b>Totals</b>	<b>2</b>	<b>3</b>	<b>0</b>	<b>8</b>	<b>2</b>	<b>6</b>	<b>0</b>	<b>8</b>	<b>8</b>	<b>1</b>	<b>0</b>	<b>0</b>	<b>12</b>	<b>22</b>	<b>4</b>

Transport Destination			
Hospital Destination by Unit	Riverside - Shore Memorial	PRMC	Other
	Greenbackville	4	
Chincoteague	14	36	2
Saxis	4	2	
Bloxom	43	3	
Parksley	71		
Onancock	76	1	
Melfa	15		
Wachapreague (Painter)	35		
Oak Hall	34	15	1
Wallops			
<b>Totals</b>	<b>296</b>	<b>57</b>	<b>3</b>

**Benchmark** = The Accomack County Board of Supervisors established a 20 minute standard for emergency response.

**NORS** = No Response by station or the call was handled by another station or agency.

**2nd Call** = 2nd ambulance call received while first ambulance was on another call.

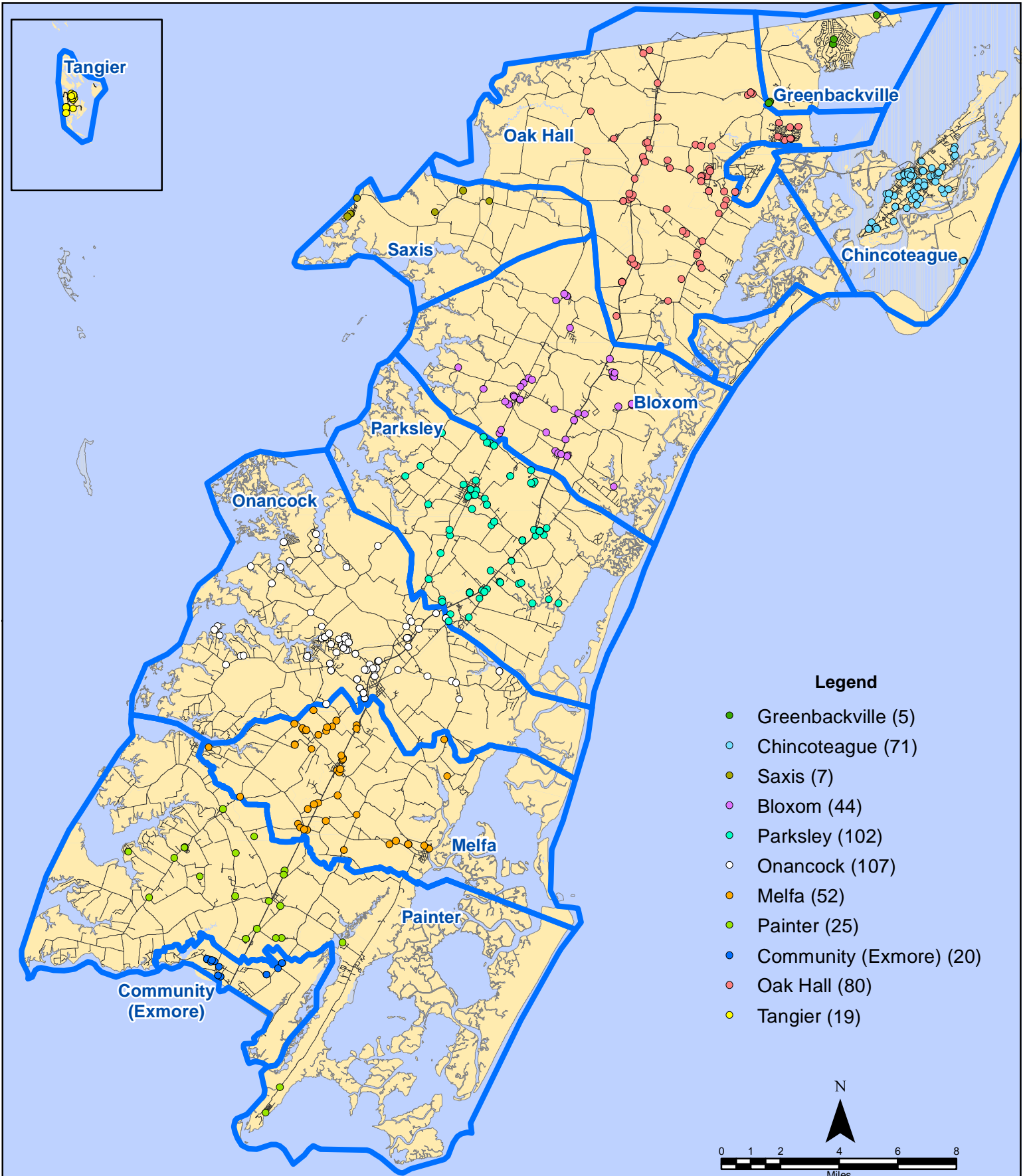
**3rd Call** = 3rd ambulance call received while first & second ambulances were on other calls.

\* This data excludes F1 Med (Medical Assist) calls in the Fire Data.

*This information was prepared using data supplied by the Eastern Shore of Virginia 911 Center. This information is original incident data only and may not be representative of all units and/or stations who responded to an incident.*

Station Receiving Aid

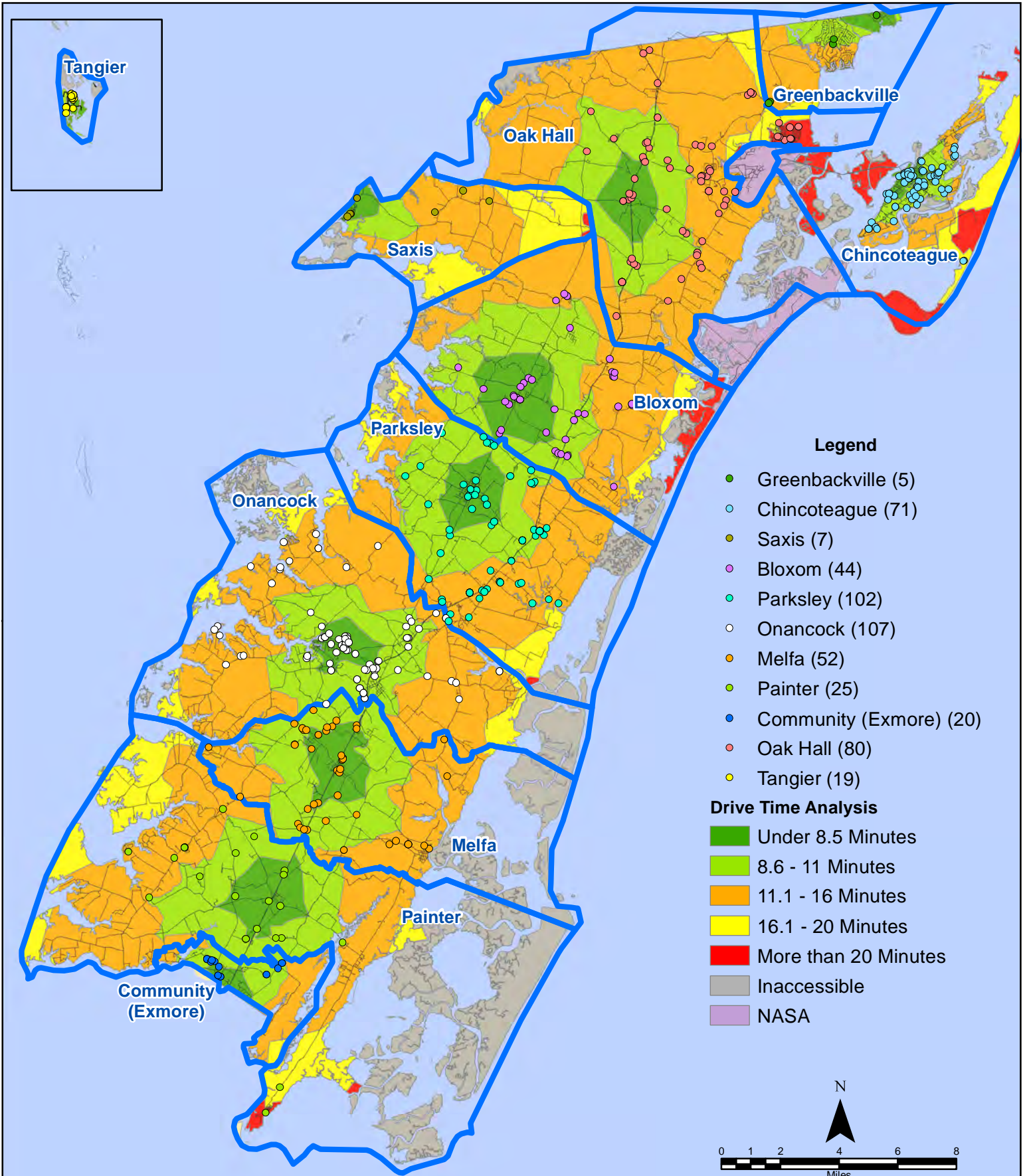
# May 2018 EMS Calls By District



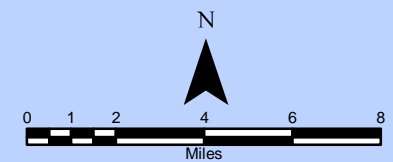
All points are plotted using X and Y coordinates provided by the ESVA 911 Center.  
Points may be plotted over one another when they are in close proximity.

Map Prepared by the Accomack County Department of Building, Planning & Economic Development using data from the ESVA 911 Center.- June 8, 2018

# May 2018 EMS Calls By District



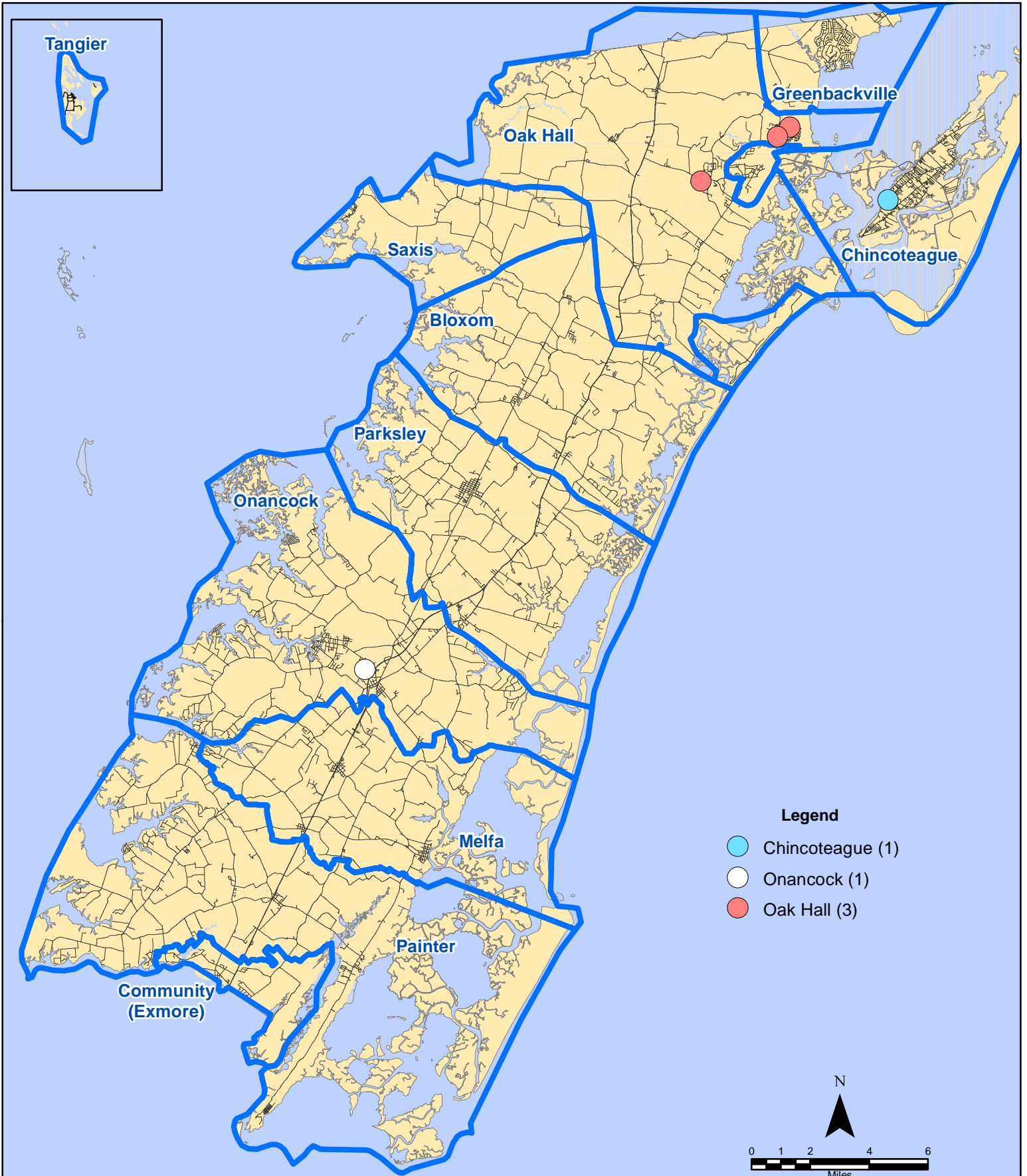
All points are plotted using X and Y coordinates provided by the ESVA 911 Center. Points may be plotted over one another when they are in close proximity.



Map Prepared by the Accomack County Department of Building, Planning & Economic Development using data from the ESVA 911 Center.- June 8, 2018



# May 2018 EMS Calls With Response Time Greater Than 20 Mins.

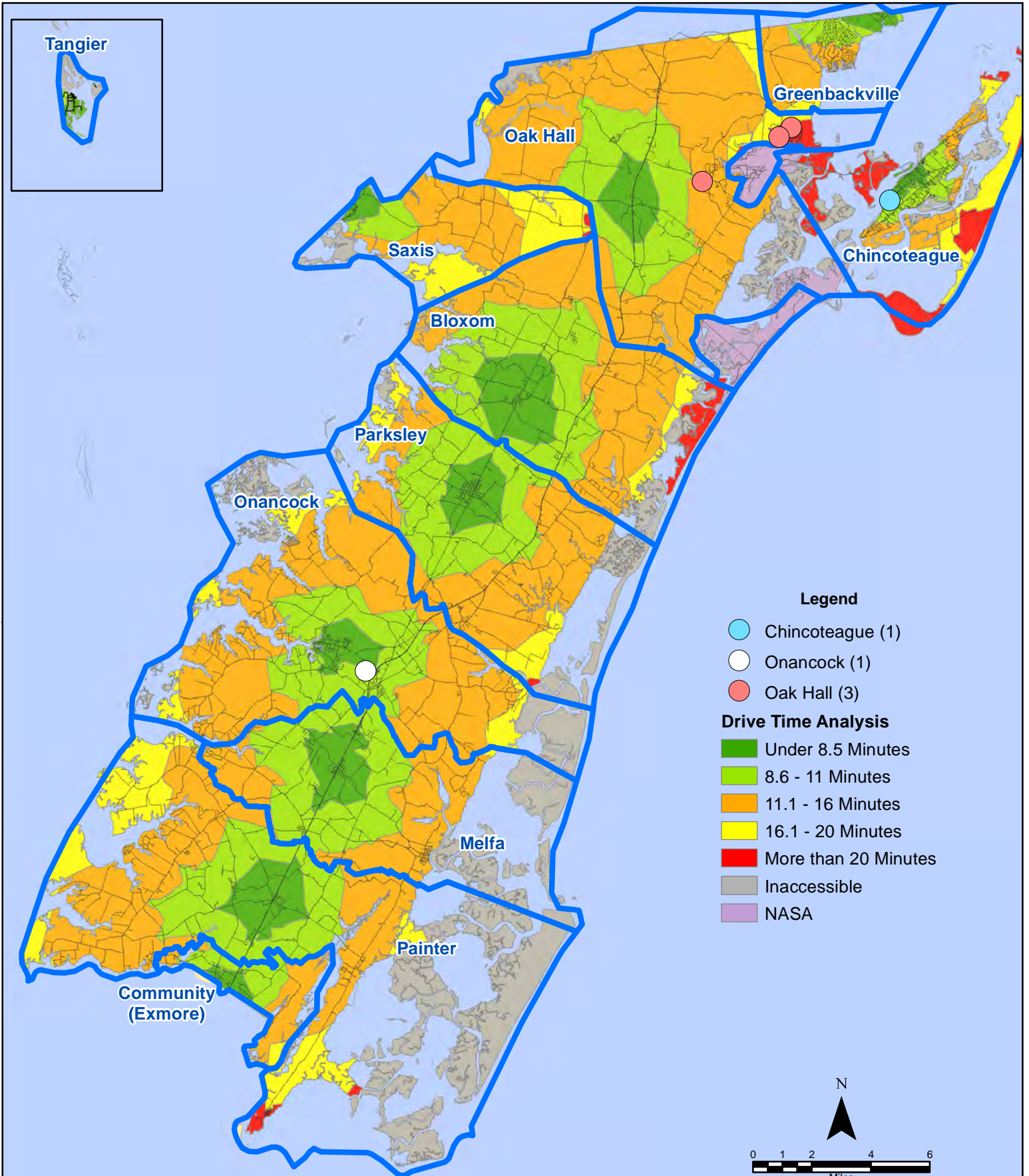


All points are plotted using X and Y coordinates provided by the ESVA 911 Center.  
Points may be plotted over one another when they are in close proximity.

Map Prepared by the Accomack County Department of Building, Planning & Economic Development using data from the ESVA 911 Center.- June 8., 2018



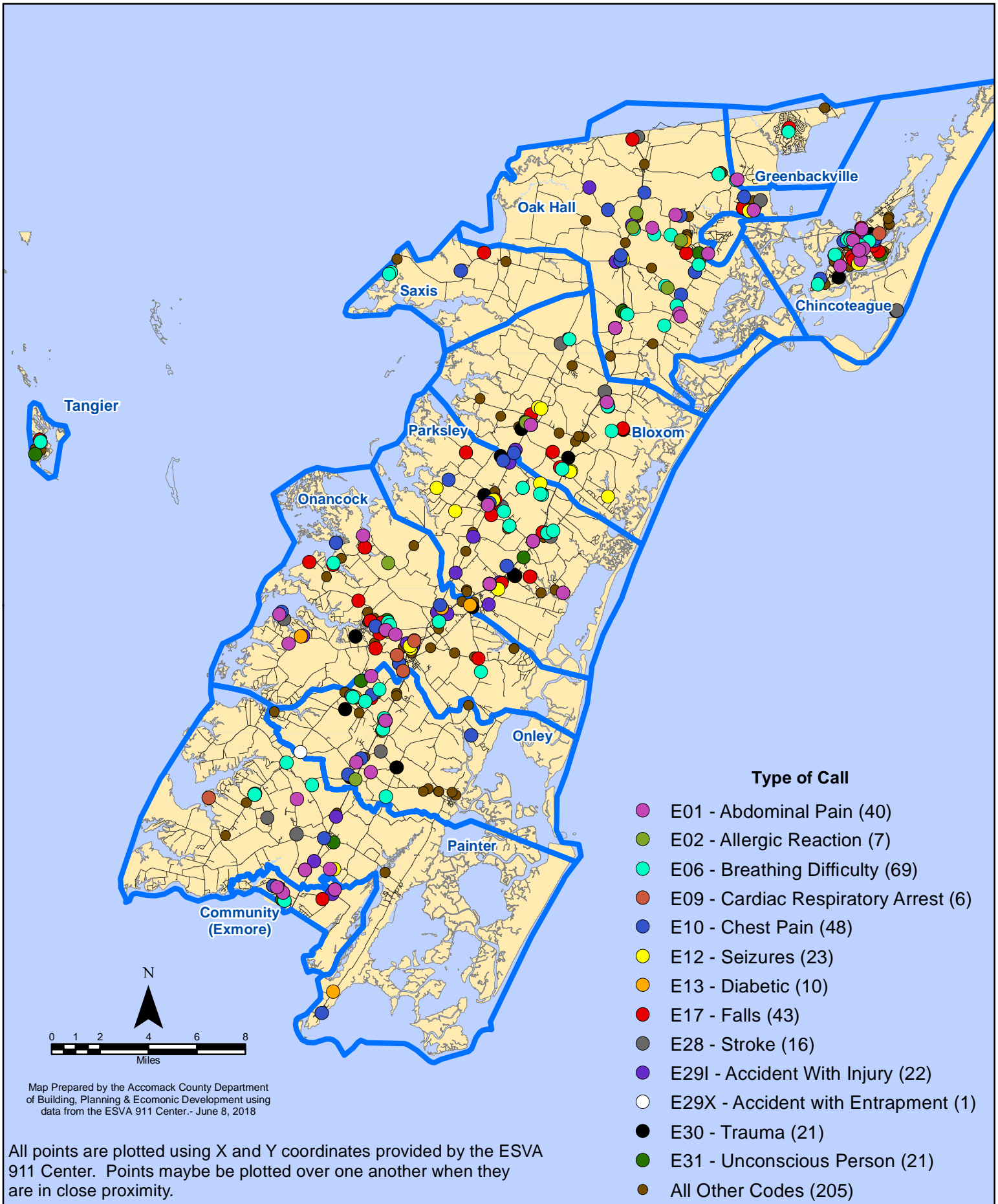
# May 2018 EMS Calls With Response Time Greater Than 20 Mins.



All points are plotted using X and Y coordinates provided by the ESVA 911 Center. Points may be plotted over one another when they are in close proximity.

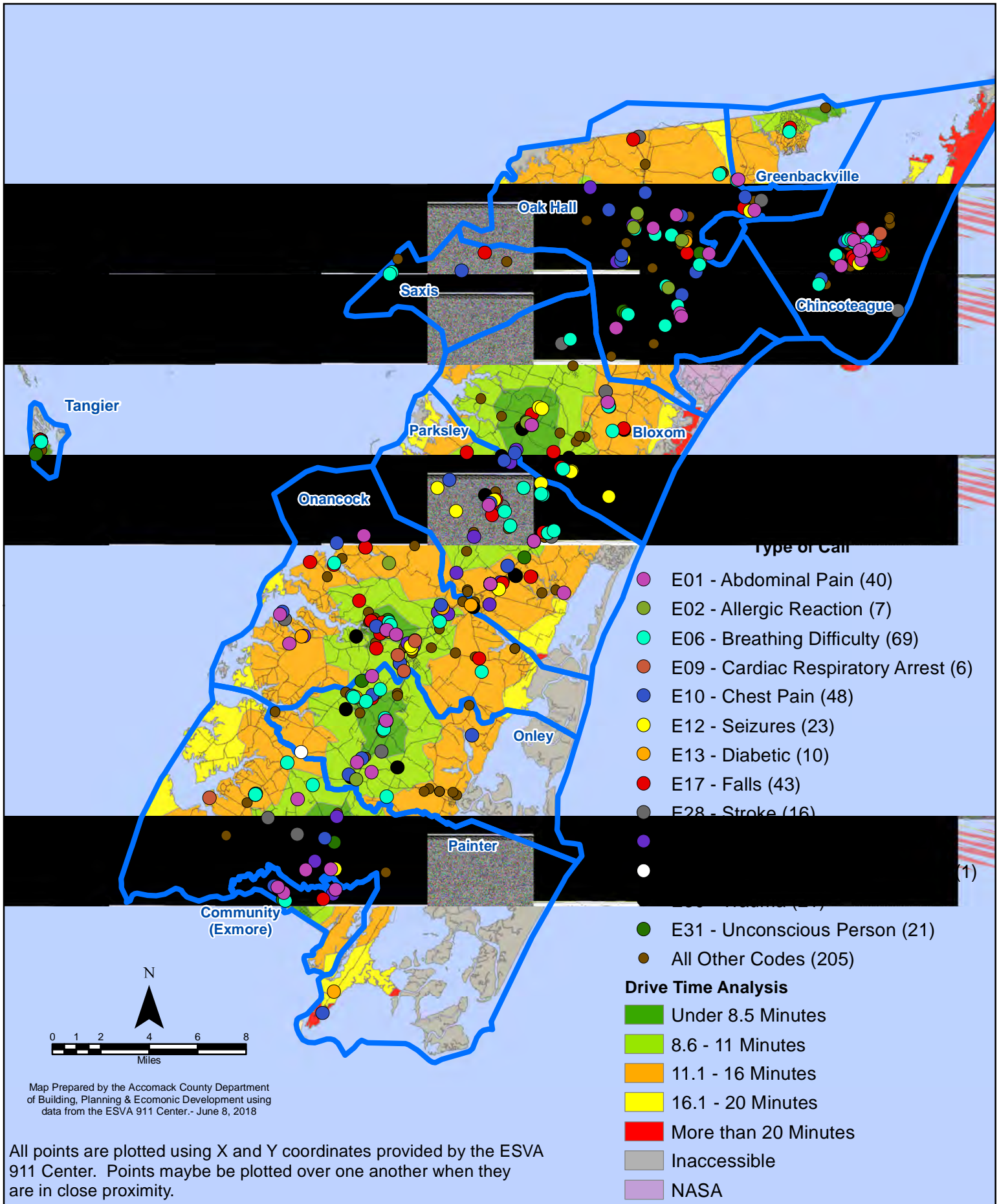
Map Prepared by the Accomack County Department of Building, Planning & Economic Development using data from the ESVA 911 Center.- June 8., 2018

# May 2018 EMS Calls By Type



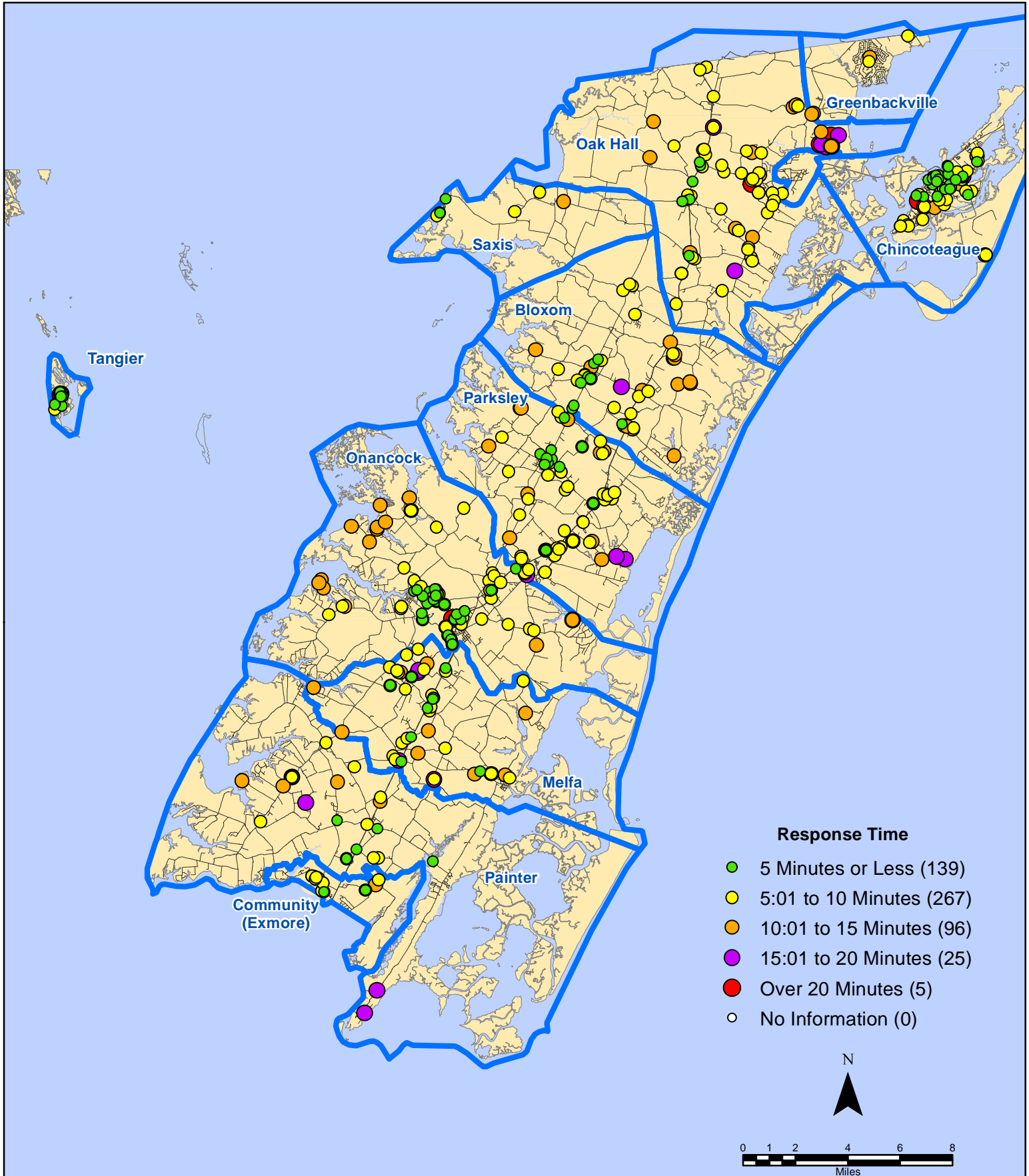


# May 2018 EMS Calls By Type





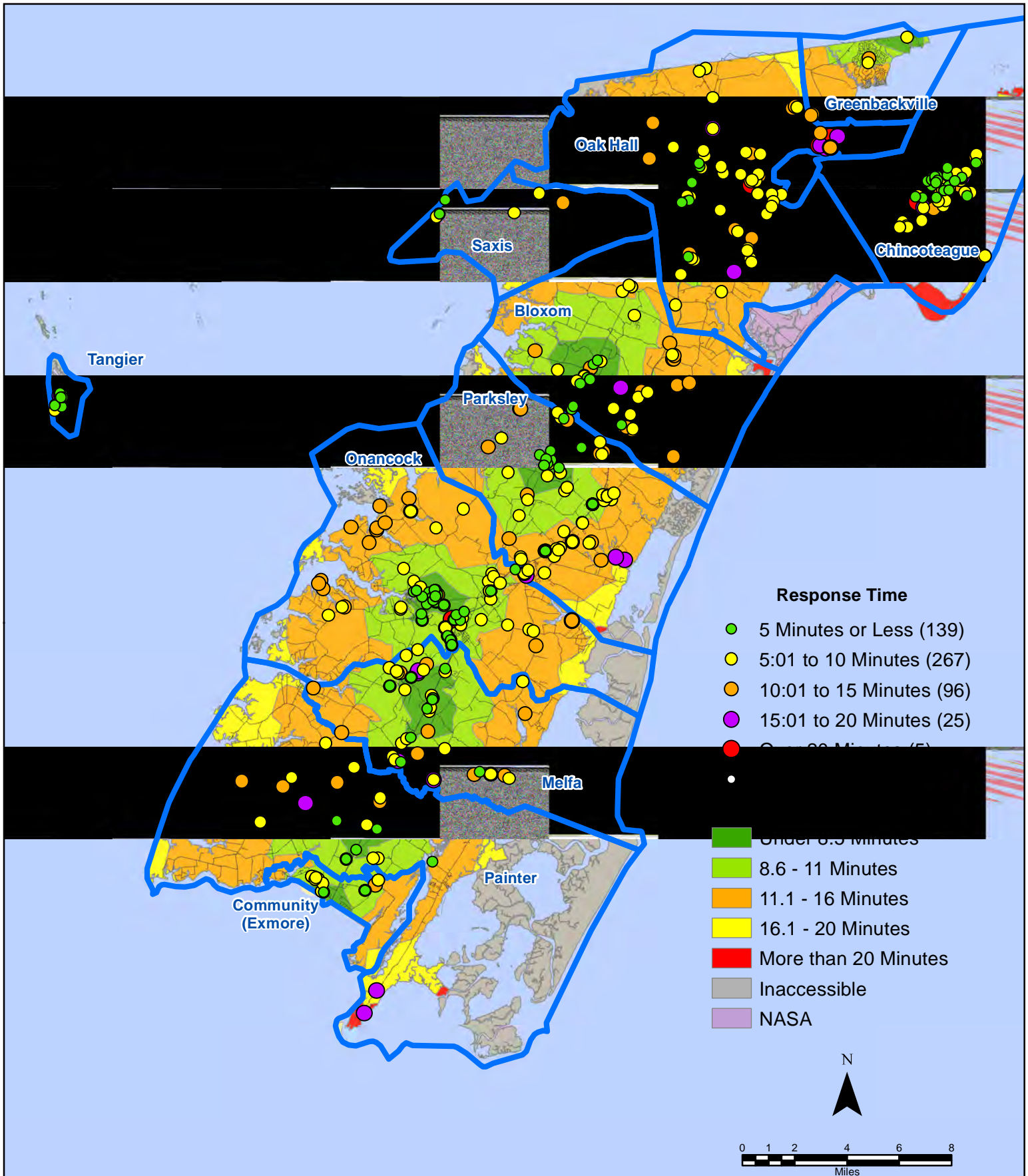
# May 2018 EMS Calls By Response Time



All points are plotted using X and Y coordinates provided by the ESVA 911 Center.  
Points may be plotted over one another when they are in close proximity.

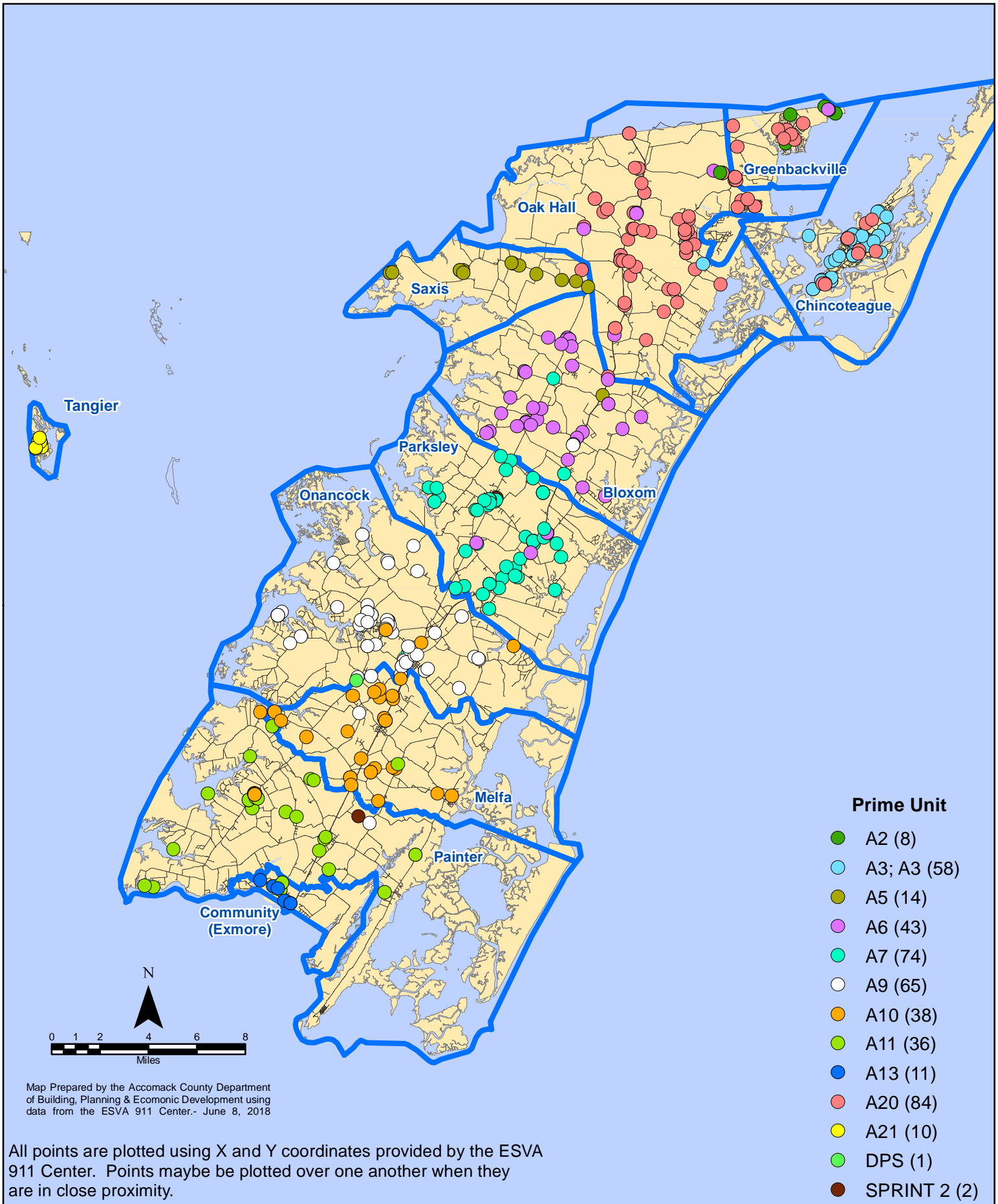
Map Prepared by the Accomack County Department of Building, Planning & Economic Development using data from the ESVA 911 Center.- June 8, 2018

# May 2018 EMS Calls By Response Time



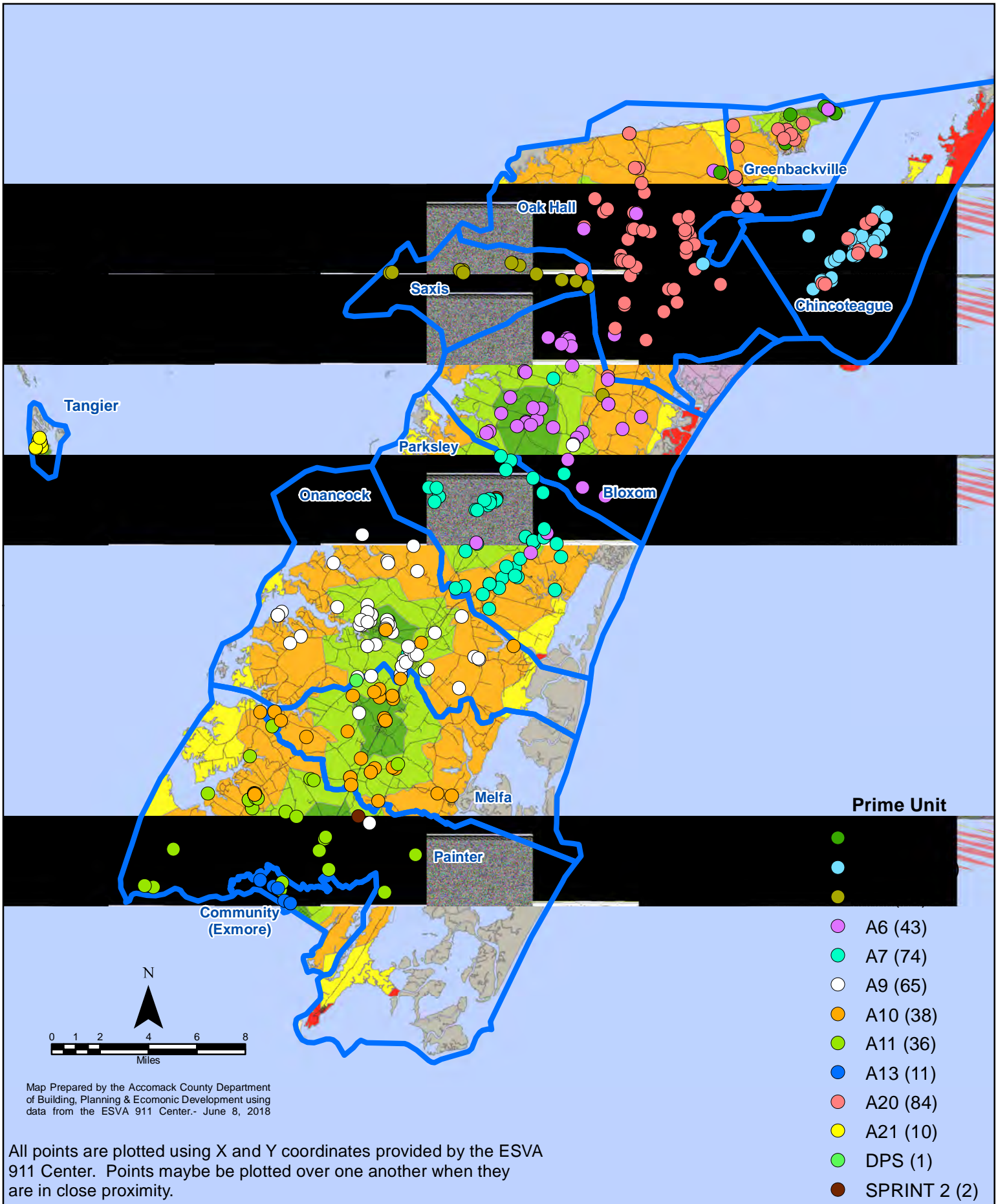
All points are plotted using X and Y coordinates provided by the ESVA 911 Center. Points may be plotted over one another when they are in close proximity.

# May 2018 EMS Calls By Prime Unit





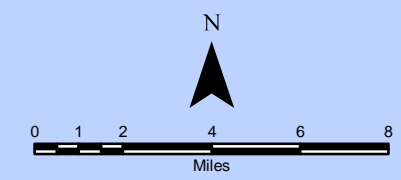
# May 2018 EMS Calls By Prime Unit



# May 2018 Fire Calls By District



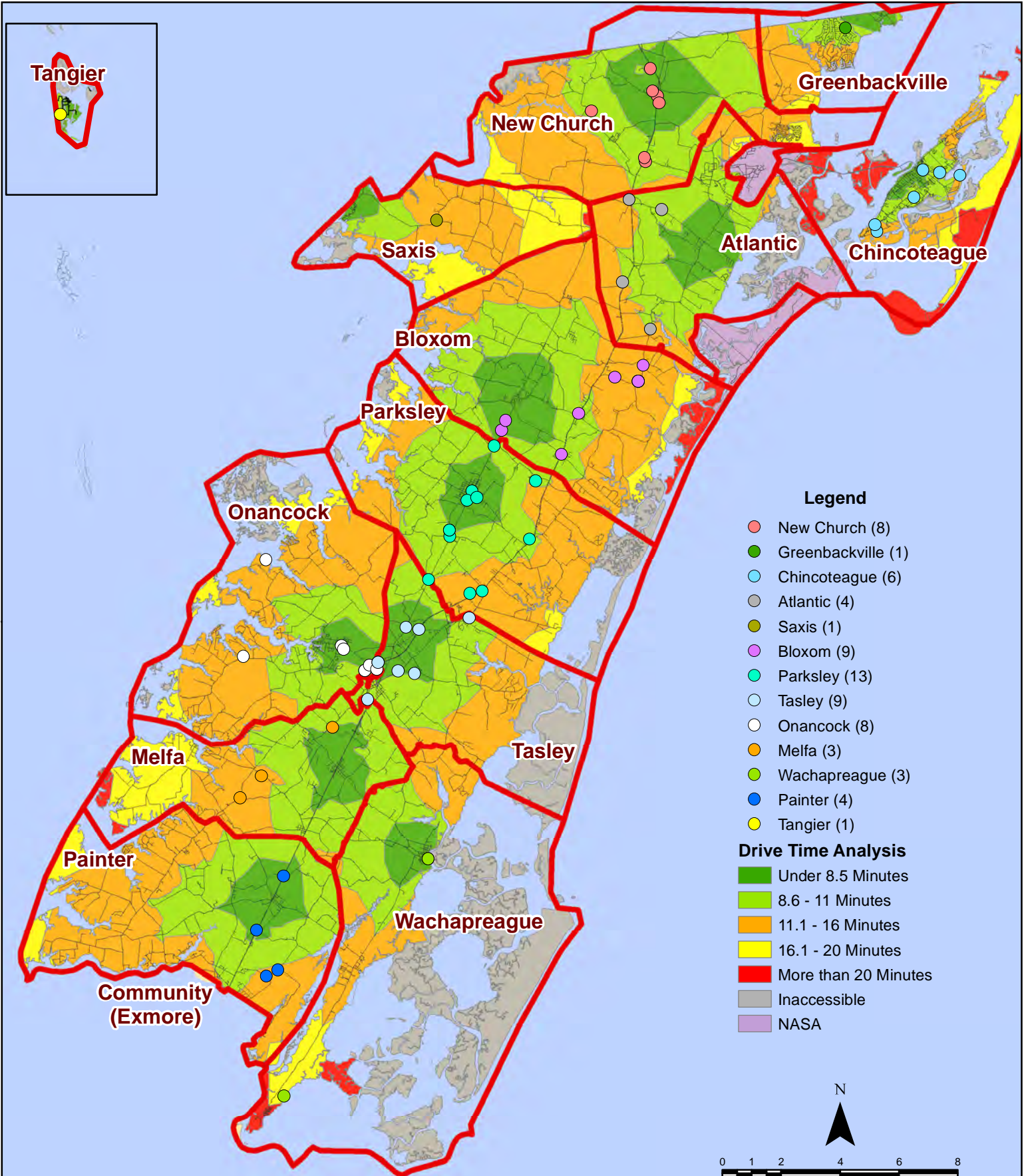
All points are plotted using X and Y coordinates provided by the ESVA 911 Center. Points may be plotted over one another when they are in close proximity.



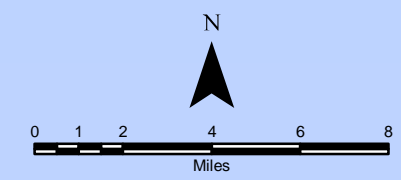
Map Prepared by the Accomack County Department of Building, Planning & Economic Development using data from the ESVA 911 Center.- June 8, 2018



# May 2018 Fire Calls By District



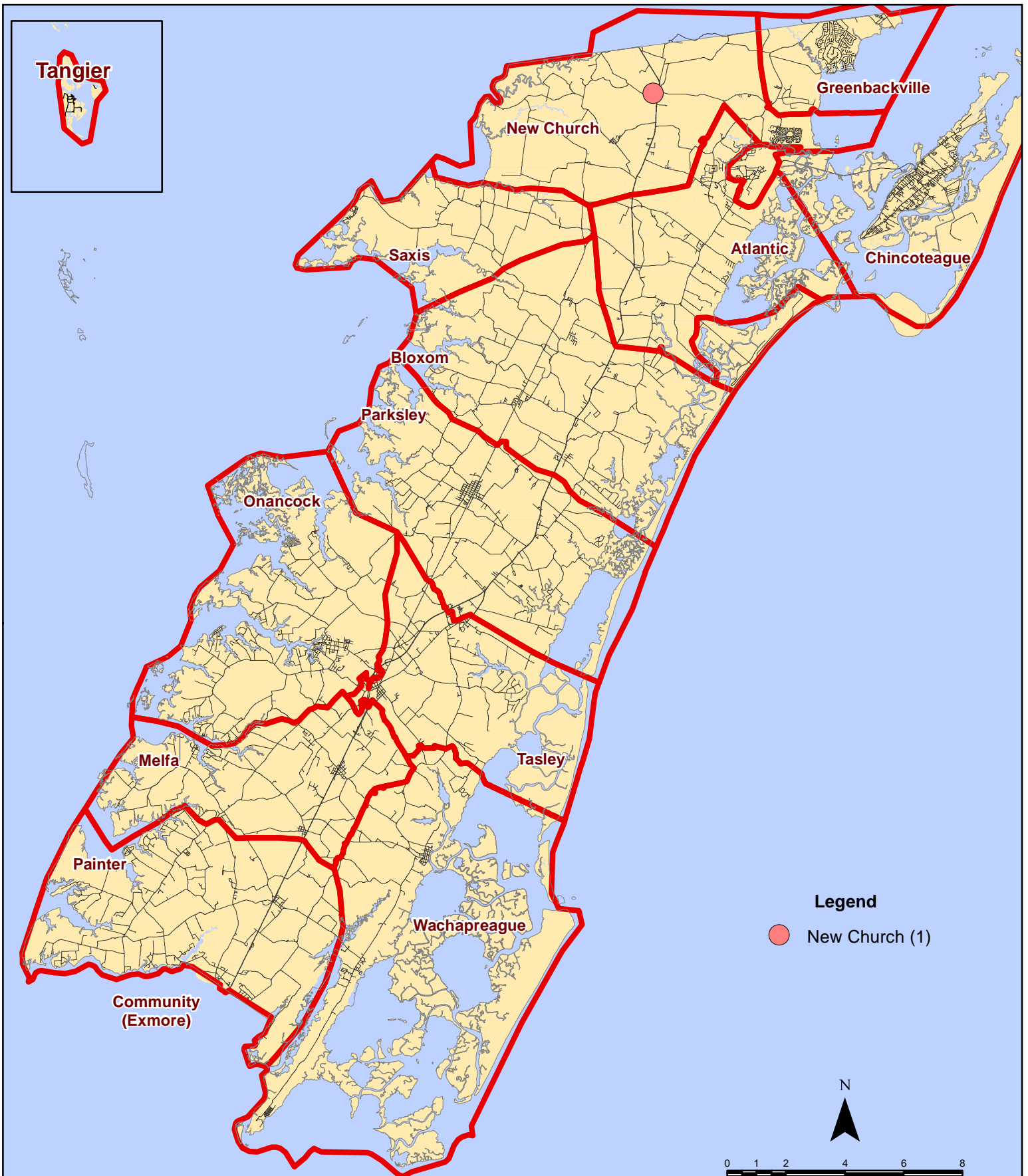
All points are plotted using X and Y coordinates provided by the ESVA 911 Center. Points may be plotted over one another when they are in close proximity.



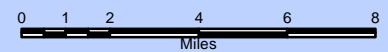
Map Prepared by the Accomack County Department of Building, Planning & Economic Development using data from the ESVA 911 Center.- June 8, 2018



# May 2018 Fire Calls With Response Time Greater Than 20 Mins.

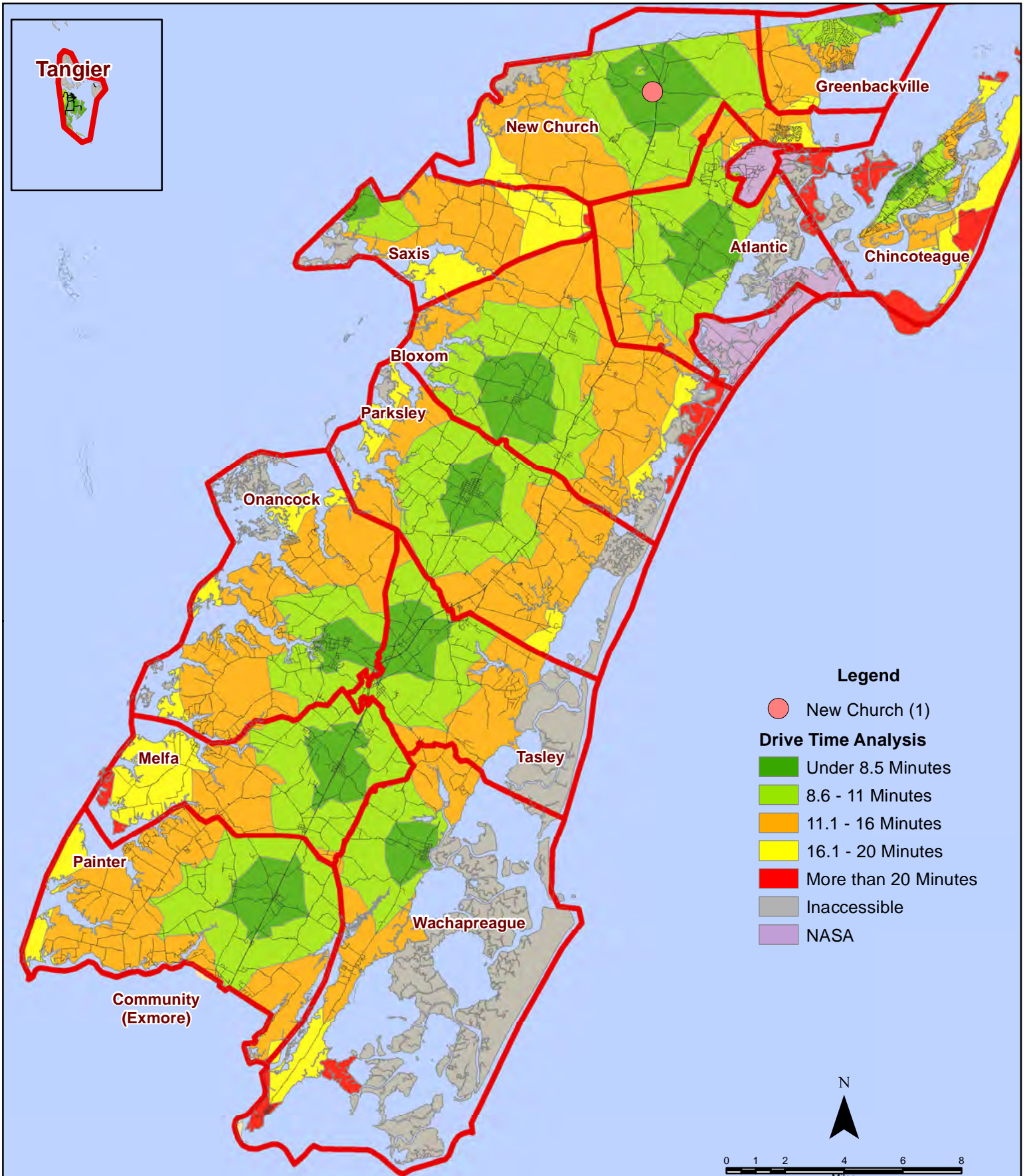


All points are plotted using X and Y coordinates provided by the ESVA 911 Center. Points may be plotted over one another when they are in close proximity.



Map Prepared by the Accomack County Department of Building, Planning & Economic Development using data from the ESVA 911 Center.- June 8, 2018

# May 2018 Fire Calls With Response Time Greater Than 20 Mins.

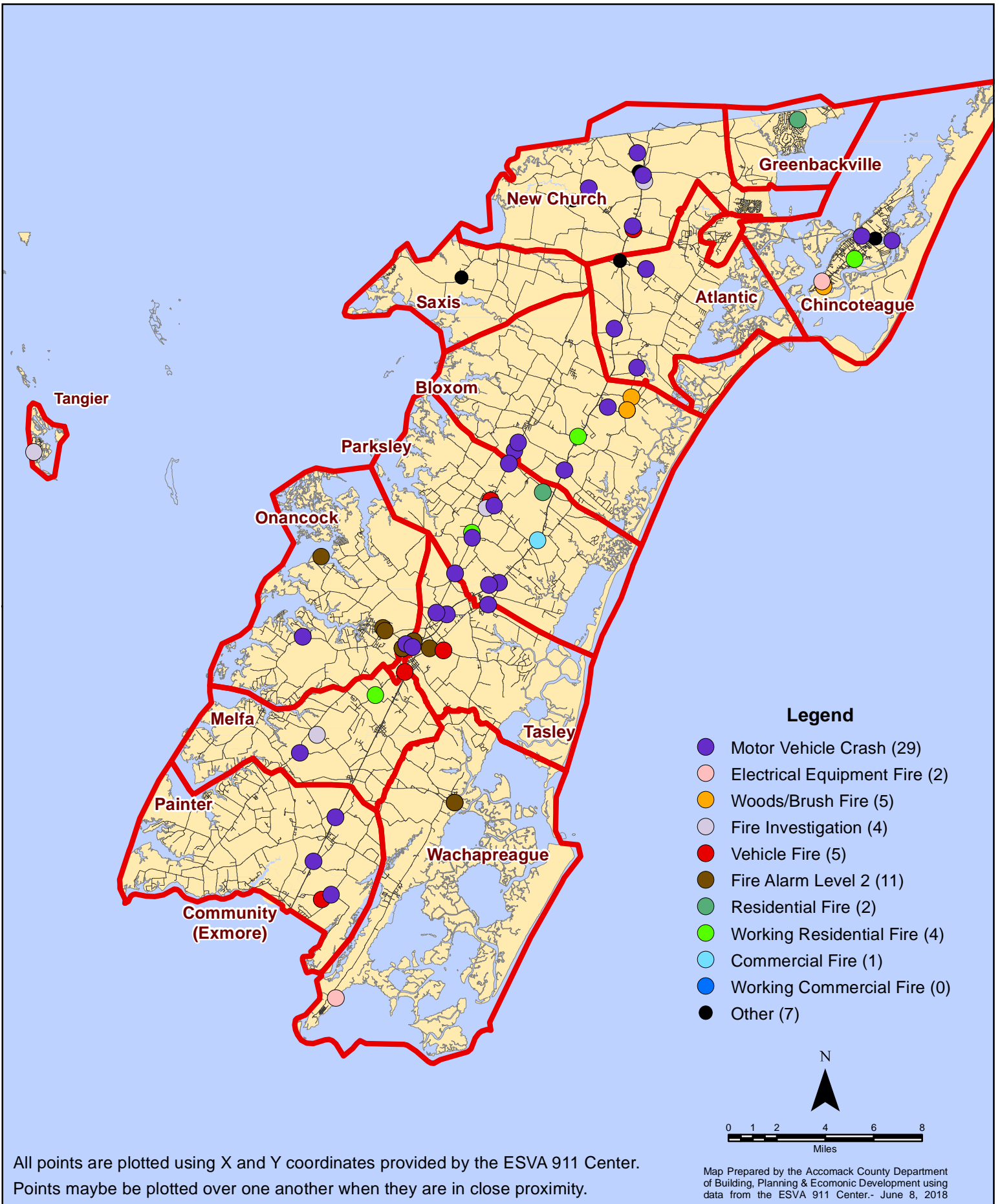


All points are plotted using X and Y coordinates provided by the ESVA 911 Center. Points may be plotted over one another when they are in close proximity.

Map Prepared by the Accomack County Department of Building, Planning & Economic Development using data from the ESVA 911 Center.- June 8, 2018

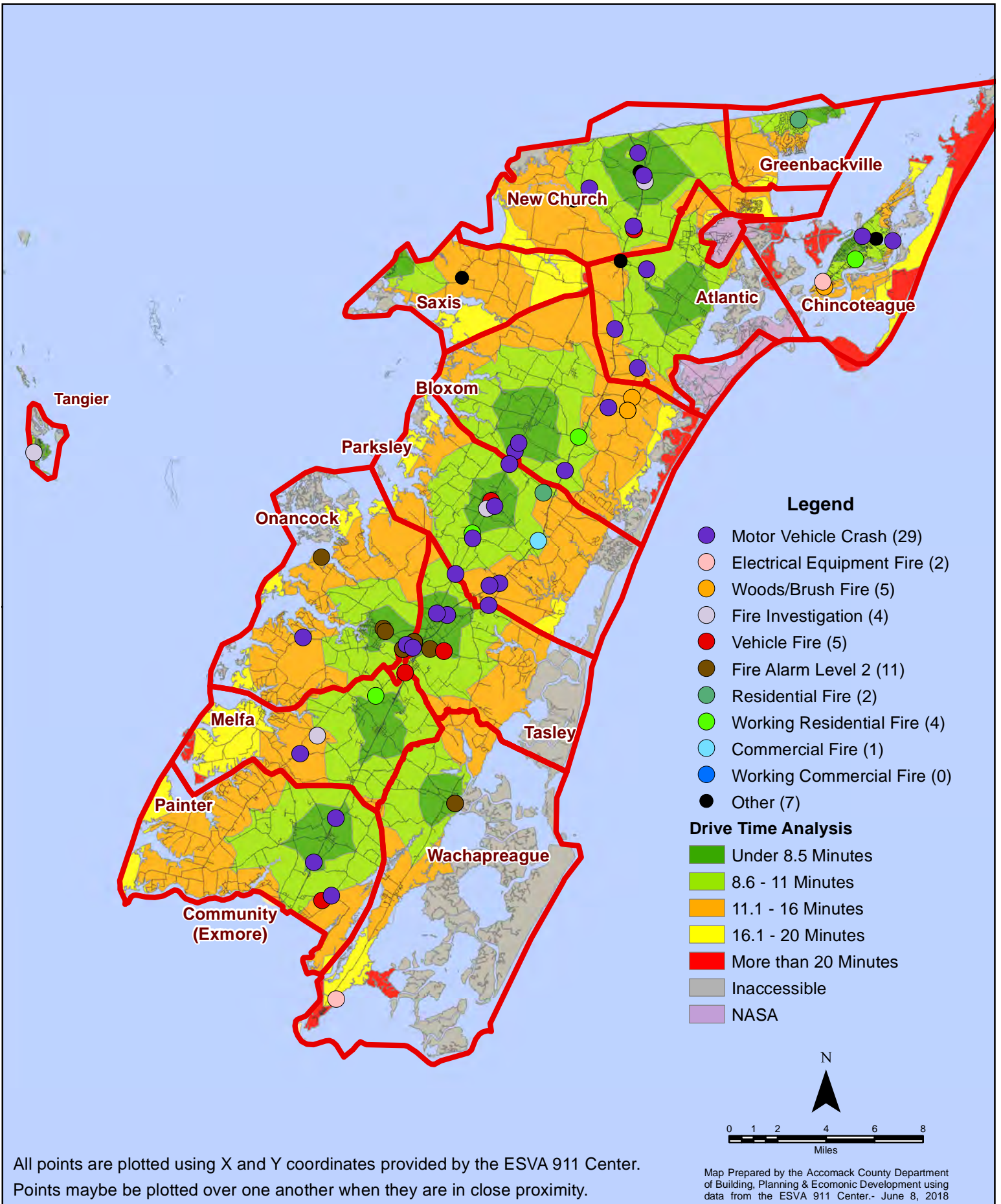


# May 2018 Fire Calls By Type





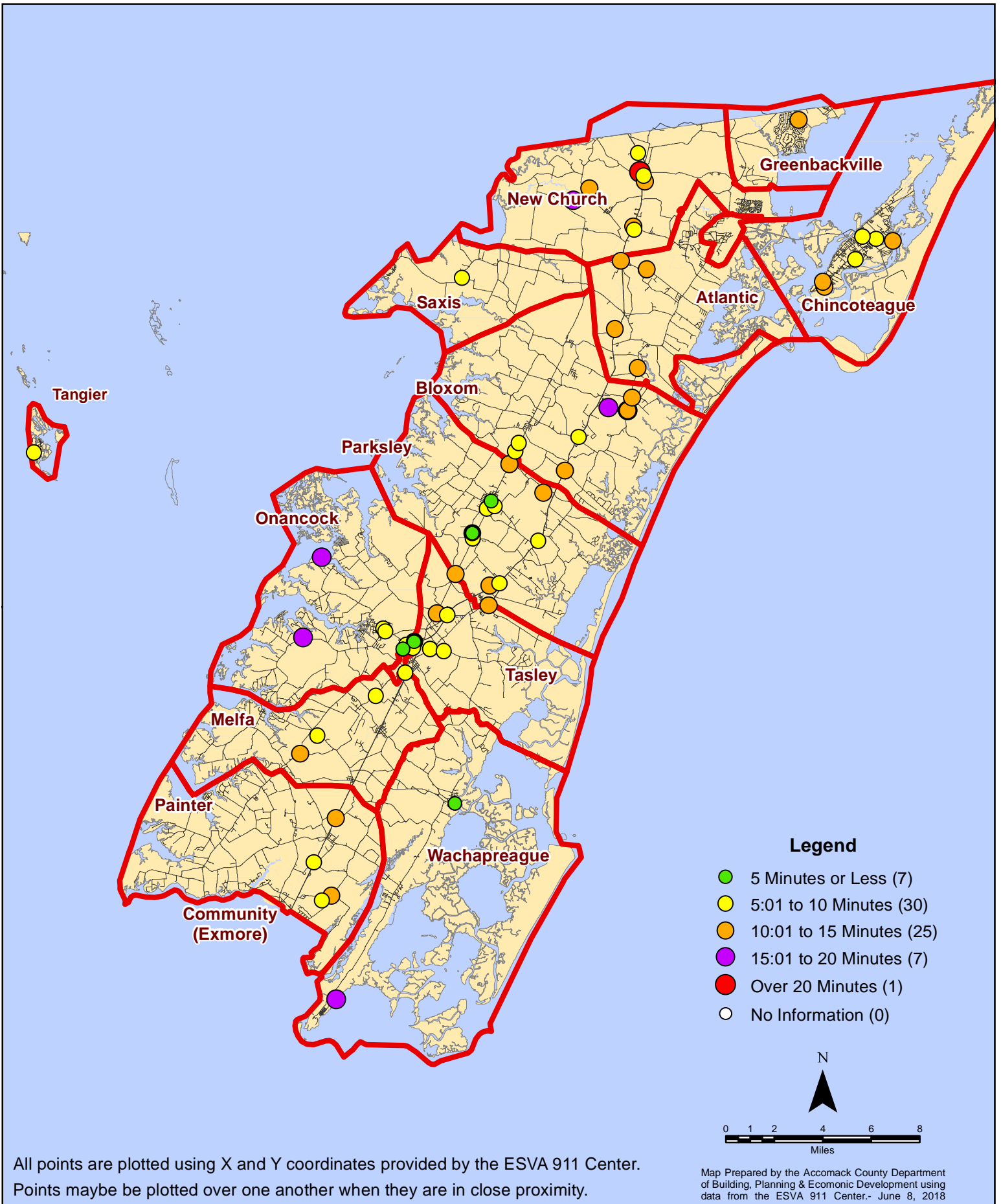
# May 2018 Fire Calls By Type



All points are plotted using X and Y coordinates provided by the ESVA 911 Center. Points may be plotted over one another when they are in close proximity.

Map Prepared by the Accomack County Department of Building, Planning & Economic Development using data from the ESVA 911 Center.- June 8, 2018

# May 2018 Fire Calls By Response Time

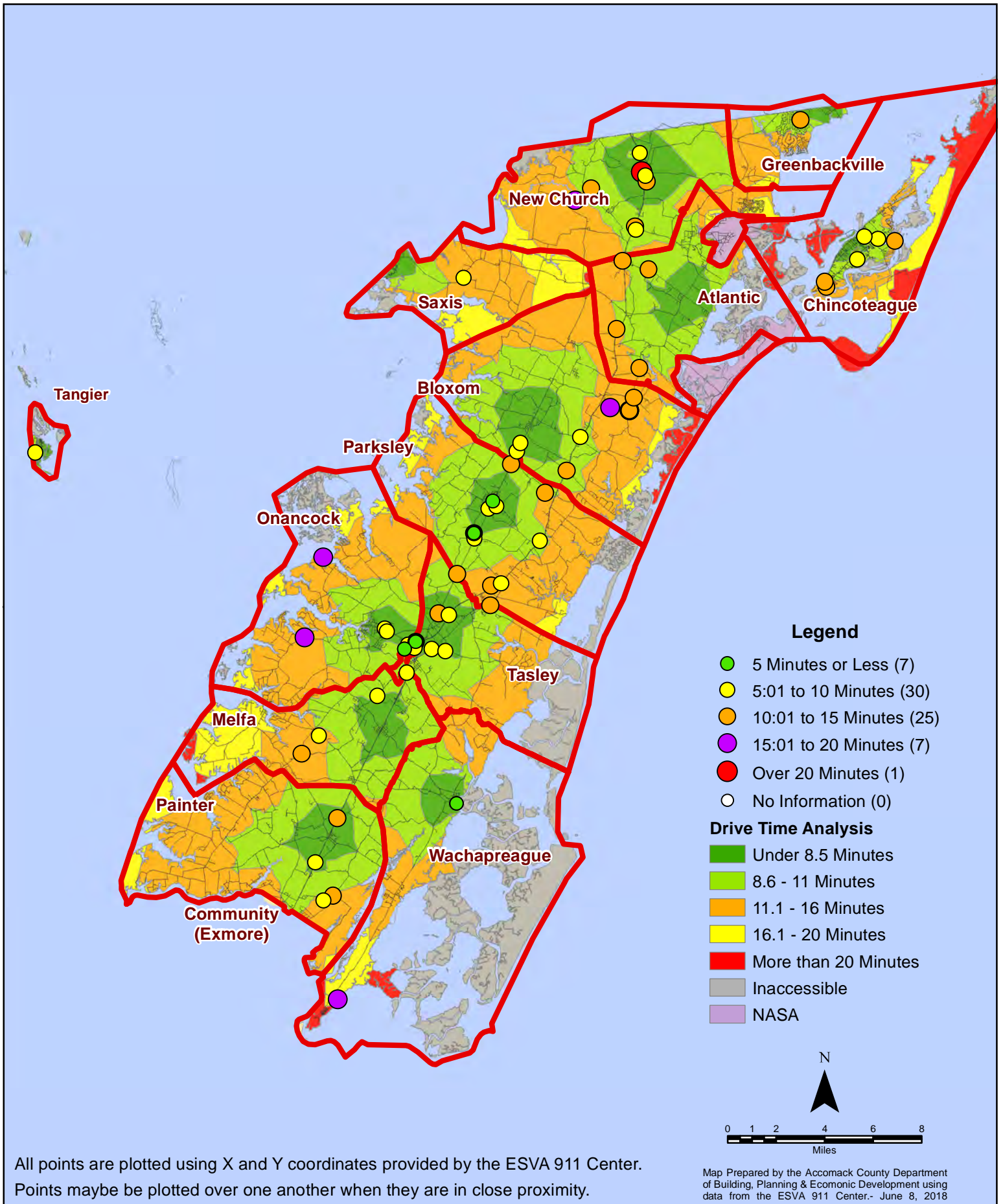


All points are plotted using X and Y coordinates provided by the ESVA 911 Center. Points may be plotted over one another when they are in close proximity.

Map Prepared by the Accomack County Department of Building, Planning & Economic Development using data from the ESVA 911 Center.- June 8, 2018



# May 2018 Fire Calls By Response Time



All points are plotted using X and Y coordinates provided by the ESVA 911 Center. Points may be plotted over one another when they are in close proximity.